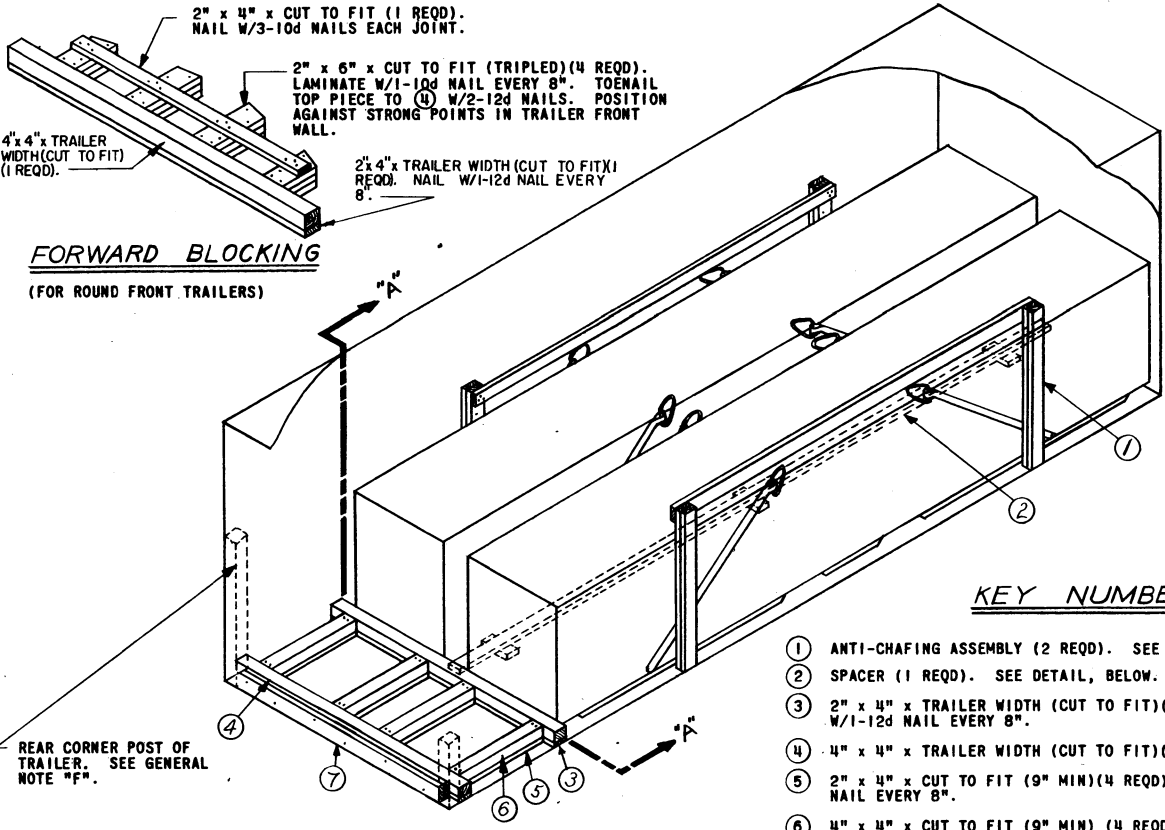


REVISION NO 1 APPROVED  
 BUREAU OF EXPLOSIVES  
*D. F. Grassmuck*  
 MILITARY ASSISTANT  
 DATE 10/7/64

**LOADING & BRACING (TL & LTL) IN CLOSED OR OPEN TOP VAN TRAILER OF M3 ROCKET MOTOR, PACKED IN WOODEN SHIPPING CONTAINER, FOR THE HONEST JOHN ROCKET**

DRAFTER <b>JDS</b>	AMENITY <i>YBH</i>	ENGINEER D1W / AGE	SUBMITTED <i>[Signature]</i>
CHECKER <i>GW</i>	CHECKER <i>[Signature]</i>	ENGINEER	
REVISIONS			APPROVED <i>[Signature]</i>
1	5/1/64	JDS GNP	ARMY MISSILE COMMAND
			APPROVED BY ORDER OF COMMANDER, ARMY MATERIEL COMMAND
			<i>[Signature]</i> Col. G.S. ARMY SUPPLY & MAINTENANCE COMMAND
			MATERIEL COMMAND U.S.A.
			<b>15 NOVEMBER 1954</b>
			CLASS DIVISION DRAWING FILE
			19 48 5109 GMIIA9



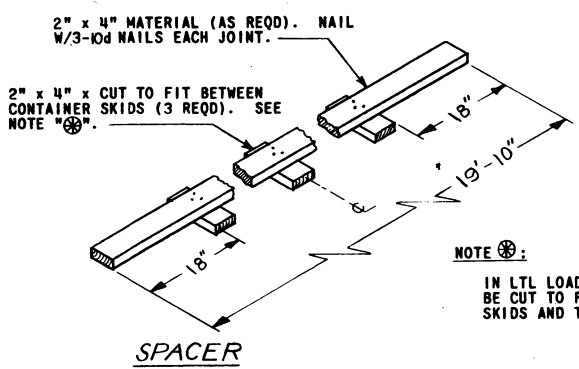
**FORWARD BLOCKING**  
(FOR ROUND FRONT TRAILERS)

**ISOMETRIC VIEW**

24'-0" LONG TRAILER WITH WOOD, WOOD AND METAL OR METAL FLOOR.

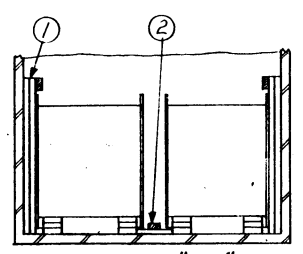
**KEY NUMBERS**

- ① ANTI-CHAFING ASSEMBLY (2 REQD). SEE DETAIL, BELOW.
- ② SPACER (1 REQD). SEE DETAIL, BELOW.
- ③ 2" x 4" x TRAILER WIDTH (CUT TO FIT)(2 REQD). NAIL TO ④ W/1-12d NAIL EVERY 8".
- ④ 4" x 4" x TRAILER WIDTH (CUT TO FIT)(2 REQD).
- ⑤ 2" x 4" x CUT TO FIT (9" MIN)(4 REQD). NAIL TO ⑥ W/1-12d NAIL EVERY 8".
- ⑥ 4" x 4" x CUT TO FIT (9" MIN) (4 REQD). ALIGN WITH CONTAINER SKIDS. TOENAIL TO ④ W/2-16d NAILS EACH END.
- ⑦ SOLID FILL, 6" WIDE x CUT TO FIT BETWEEN REAR CORNER POSTS, AS REQUIRED TO FILL EXCESS SPACE BETWEEN PIECES ③ AND ④ AND DOORS, AS SHOWN. NAIL TO ③ AND ④ AND/OR SELF W/6-10d NAILS. NOT REQUIRED FOR TRAILERS WITHOUT REAR CORNER POSTS.

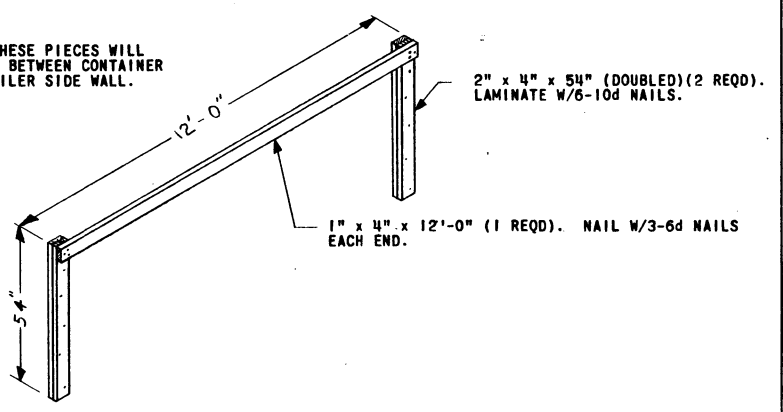


**SPACER**

**NOTE** Ⓢ:  
IN LTL LOAD THESE PIECES WILL BE CUT TO FIT BETWEEN CONTAINER SKIDS AND TRAILER SIDE WALL.



**SECTION "A-A"**

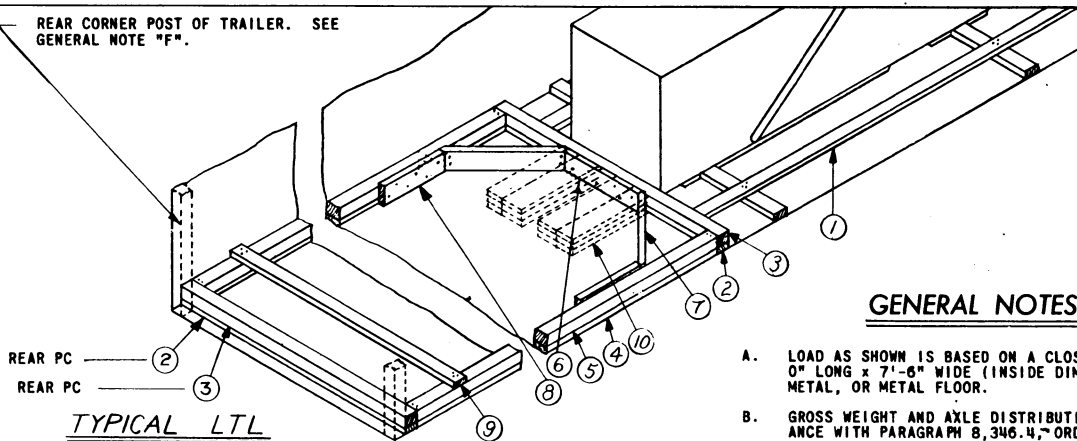


**ANTI-CHAFING ASSEMBLY**

(2 REQD)

REAR CORNER POST OF TRAILER. SEE GENERAL NOTE "F".

REVISION NO 1 APPROVED  
 BUREAU OF EXPLOSIVES  
*A. F. Grassmuck*  
 MILITARY ASSISTANT  
 DATE 10/7/64



TYPICAL LTL

KEY NUMBERS

- ① SPACER (2 REQD). SEE DETAIL.
- ② 2" x 4" x TRAILER WIDTH (CUT TO FIT)(2 REQD). NAIL TO ③ W/1-12d NAIL EVERY 8".
- ③ 4" x 4" x TRAILER WIDTH (CUT TO FIT)(2 REQD).
- ④ 2" x 4" x CUT TO FIT (2 REQD). NAIL TO ⑤ W/1-12d NAIL EVERY 8". SEE NOTE "A".
- ⑤ 4" x 4" x CUT TO FIT (2 REQD). TOENAIL TO ③ W/2-16d NAILS EACH END.
- ⑥ 2" x 6" x 30" (1 REQD). NAIL TO ② AND/OR ③ W/6-12d NAILS.
- ⑦ 2" x 6" x CUT TO FIT (2 REQD). DOUBLE BEVEL EACH END 45°. TOENAIL TO ② AND/OR ③ AND ④ AND/OR ⑤ WITH 2-16d NAILS EACH END.
- ⑧ 2" x 6" x 24" (2 REQD). NAIL TO ④ AND/OR ⑤ W/6-12d NAILS.
- ⑨ 2" x 4" x TRAILER WIDTH (CUT TO FIT)(MIN - 1 REQD). POSITION EVERY 7'-0". NAIL TO ⑤ W/3-12d NAILS EACH END.
- ⑩ 2" x 6" x 30" (TRIPLED)(4 REQD). FOR WOOD OR WOOD AND METAL FLOOR TRAILERS. DELETE REAR PIECES ② AND ③, AND PIECES ④ THRU ⑨. NAIL FIRST PIECE TO TRAILER FLOOR W/7-12d NAILS. NAIL EACH ADDITIONAL PIECE IN LIKE MANNER. TOENAIL TO ③ W/2-16d NAILS. SEE NOTE "B".

GENERAL NOTES

- A. LOAD AS SHOWN IS BASED ON A CLOSED OR OPEN TOP VAN TRAILER 24'-0" LONG x 7'-6" WIDE (INSIDE DIMENSION) WITH WOOD, WOOD AND METAL, OR METAL FLOOR.
- B. GROSS WEIGHT AND AXLE DISTRIBUTION OF WEIGHT WILL BE IN ACCORDANCE WITH PARAGRAPH 8,346.4, ORDM 3-4, VOL 3.
- C. SELECTION OF VEHICLE TO BE USED TO TRANSPORT GUIDED MISSILE AMMUNITION AND/OR COMPONENTS THEREOF, MUST COMPLY WITH AR 55-355, CHAPTER 213, FOR EXPLOSIVES OR OTHER DANGEROUS ARTICLES, IN FULL.
- D. NOTICE: A SHIPMENT WILL BE POSITIONED IN THE TRAILER CONSISTENT WITH STATE WEIGHT LAWS. THE NUMBER OF UNITS MAY BE ADJUSTED TO FIT THE DIMENSIONS OF THE VEHICLE CONCERNED OR THE QUANTITY TO BE SHIPPED; HOWEVER, THE APPROVED METHODS CONTAINED HEREIN FOR FULL OR PARTIAL TRUCKLOAD MUST BE FOLLOWED FOR BLOCKING, BRACING AND STAYING OF THIS ITEM.
- E. FOR DETAIL OF CONTAINER SEE DRAWING NO. 8026321.  
 CONTAINER DIMENSIONS - 239-1/2" LONG x 41-1/2" WIDE x 49" HIGH.  
 GROSS WEIGHT - 6,538 POUNDS (APPROX).
- F. FOR TRAILERS NOT EQUIPPED WITH REAR CORNER POSTS, REAR BLOCKING MUST CONTACT CLOSED DOORS.
- G. THIS ITEM IS AN ICC CLASS "A" EXPLOSIVE. SPECIFIED OUTLOADING PROCEDURES CAN ALSO BE UTILIZED FOR THE SHIPMENT OF THE DEPICTED CONTAINERS WHEN THEY ARE EMPTY OR LOADED WITH AN ITEM WHICH IS IDENTIFIED DIFFERENTLY BY NOMENCLATURE THAN THE ITEM DESIGNATED WITHIN THE DRAWING TITLE.
- H. LOADING OF THIS ITEM IS RESTRICTED TO ONE (1) LAYER IN HEIGHT.

NOTE

THE FOUR (4) BACK UP CLEATS, SHOWN AS PIECE ⑩, ARE ADEQUATE FOR RETAINING A MAXIMUM LTL LOAD OF 7,800 POUNDS.  
 "K-BRACE", SHOWN AS PIECES ④ THRU ⑨, IS ADEQUATE FOR RETAINING A MAXIMUM LTL LOAD OF 26,000 POUNDS.

BILL OF MATERIAL

LUMBER	LINEAL FEET	BOARD FEET
1" x 4"	24	8
2" x 4"	86	58
2" x 6"	14	14
4" x 4"	27	36
NAILS	NO. REQD	POUNDS
6d (2")	12	1/4
10d (3")	45	3/4
12d (3-1/4")	44	3/4
16d (3-1/2")	16	1/2

LOAD AS SHOWN

ITEM	QUANTITY	WEIGHT (APPROX)
M3 ROCKET MOTOR	2	13,076 LBS
DUNNAGE		293 LBS
TOTAL WEIGHT		13,369 LBS (APPROX)

MATERIAL SPECIFICATIONS

LUMBER: SEE PARAGRAPH 8400, ORDM 3-4, VOL 3.  
 NAILS: COMMON, CEMENT COATED, FED SPEC FF-N-105.  
 ALT: ANNULAR-RING TYPE NAIL OF SAME SIZE.

**LOADING & BRACING (TL & LTL) IN CLOSED OR OPEN TOP VAN TRAILER OF M3 ROCKET MOTOR, PACKED IN WOODEN SHIPPING CONTAINER, FOR THE HONEST JOHN ROCKET**

DRAFTER <b>JDS</b>	AMENI-XBH <i>Wal</i>	ENGINEER DIW / AGE	SUBMITTED
CHECKER <i>GW</i>	CHECKER <i>MS</i>	ENGINEER	APPROVED <i>Andrew W. Boyd</i> COMMANDER, SAVANNA ARMY DEPOT
<b>REVISIONS</b>			
1	5/1/64	JDS <i>GW</i>	<i>Andrew W. Boyd</i> ARMY MISSILE COMMAND
APPROVED BY ORDER OF COMMANDER, ARMY MATERIEL COMMAND <i>George J. Kelly, Col G.S.</i> ARMY SUPPLY & MAINTENANCE COMMAND			
MATERIEL COMMAND U.S.A.			
<b>15 NOVEMBER 1954</b>			
CLASS	DIVISION	DRAWING	FILE
19	48	5109	GMIIA9

DO NOT SCALE

