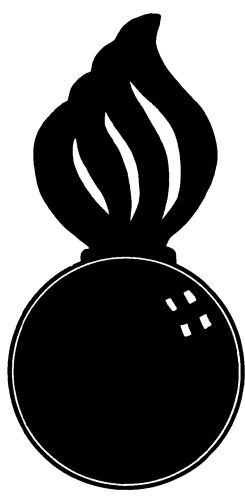


APPROVED
 BUREAU OF EXPLOSIVES
d. J. Grassmuck
 INSPECTOR
 DATE 3/5/62

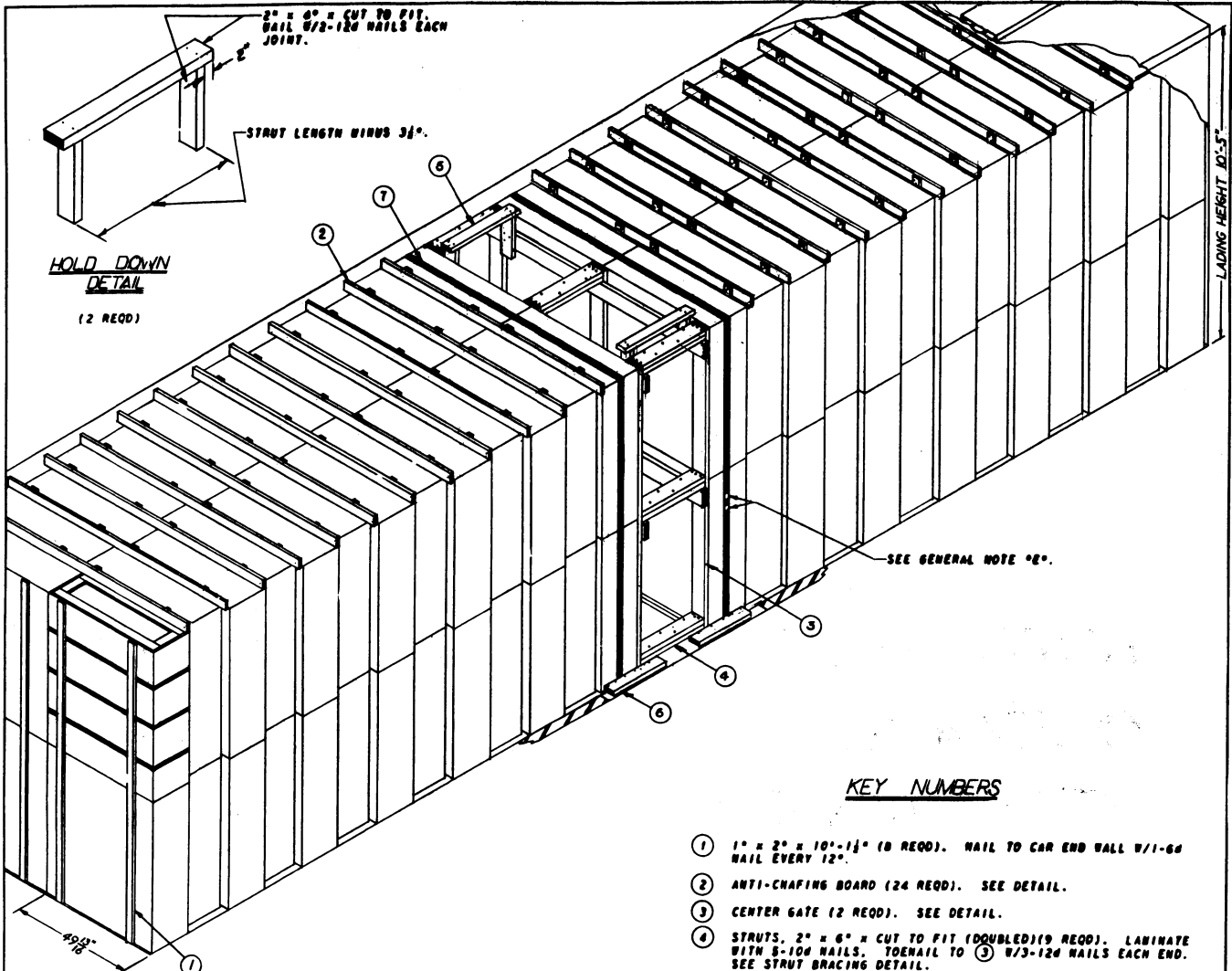


**LOADING & BRACING (CL & LCL) IN BOX CAR
 OF FIN ASSEMBLY, MI36 SERIES, PACKED FOUR
 PER WOODEN CONTAINER, FOR THE 762MM
 ROCKET**

LOADING & BRACING (CL & LCL) IN BOX CAR OF FIN ASSEMBLY,
 MI36 SERIES, PACKED FOUR PER WOODEN CONTAINER, FOR
 THE 762MM ROCKET

DESIGNER <i>K.S.J.</i>	TRACER	REVISIONS <i>DIW/JS</i>	SUBMITTED <i>Paul G. Mulvaney</i> COLONEL ORDN. CORPS U.S.A.	
CHECKER <i>RHA/GWP</i>	CHANGES <i>AA</i>	REVISIONS	EXAMINED <i>John Taylor</i> ORD. CORPS U.S.A.	
REVISIONS			APPROVED BY ORDER OF THE CHIEF OF ORDNANCE <i>Andrew W. Reid</i> ORD. CORPS U.S.A.	
1	11 JAN 62	<i>K.S.J.</i>	ORDNANCE CORPS U.S.A.	
			14 JULY 1954	
			CLASS	DIVISION
			19	48
			DRAWING	FILE
			5058	GM5A8

DO NOT SCALE



HOLD DOWN DETAIL
(2 REQD)

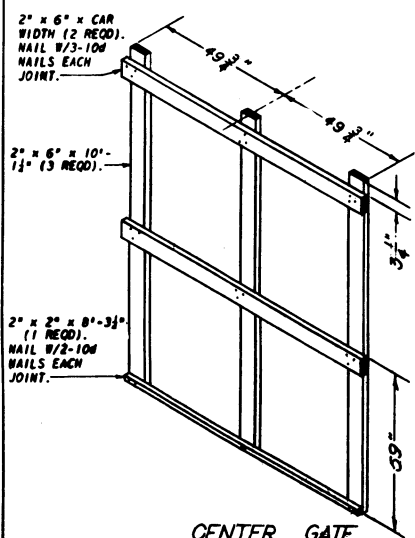
ISOMETRIC VIEW

40'-6" L x 9'-6" W BOX CAR

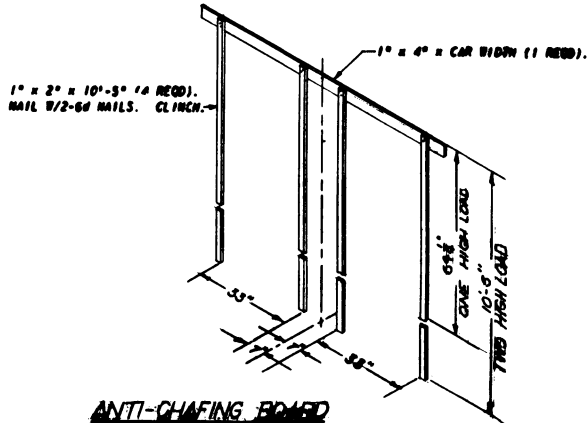
SEE GENERAL NOTE #8.

KEY NUMBERS

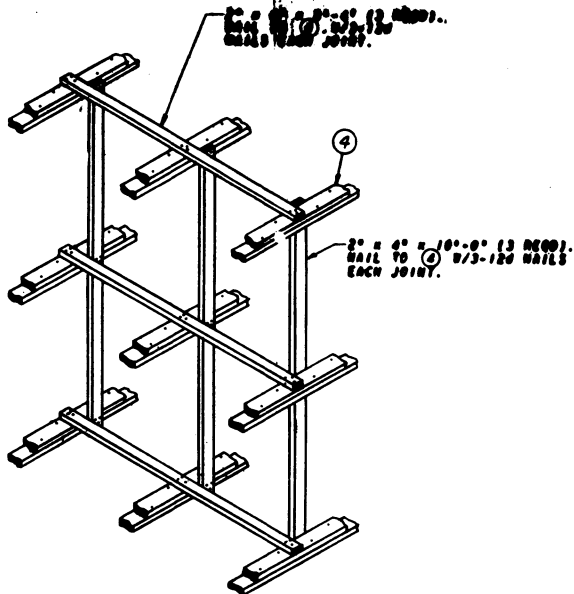
- ① 1" x 2" x 10'-1 1/2" (8 REQD). NAIL TO CAR END WALL W/1-6d NAIL EVERY 12".
 - ② ANTI-CHAFING BOARD (24 REQD). SEE DETAIL.
 - ③ CENTER GATE (2 REQD). SEE DETAIL.
 - ④ STRUTS, 2" x 6" x CUT TO FIT (DOUBLED)(9 REQD). LAMINATE WITH 8-10d NAILS. TOENAIL TO ③ W/3-12d NAILS EACH END. SEE STRUT BRACING DETAIL.
 - ⑤ GATE HOLD DOWN (2 REQD). SEE DETAIL. POSITION AGAINST CEILING OF CAR. NAIL TO ③ W/3-10d NAILS EACH JOINT.
 - ⑥ 2" x 4" x 24" (4 REQD). POSITION AS SHOWN. NAIL TO CAR FLOOR W/5-16d NAILS.
 - ⑦ STEEL STRAPPING, 1 1/2" x .035" x 30'-0" (2 REQD).
- ⑧ THESE PIECES USED FOR DOORWAY PROTECTION. ADJUST LENGTH AND/OR NO. REQD FOR CARS WITH EITHER WIDER OR STAGGERED DOORS.



CENTER GATE DETAIL
(2 REQD)

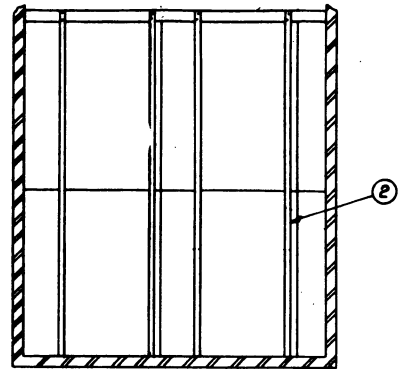


ANTI-CHAFING BOARD DETAIL
(14 REQD)



**STRUT BRACING
DETAIL**

(FOR STRUTS GREATER THAN 40°).



CROSS SECTION

(9'-2" WIDE CAR)

GENERAL NOTES

- A. LOADS AS SHOWN ARE BASED ON BOX CARS 40'-6" LONG x 8'-6" AND 9'-2" WIDE x 10'-6" HIGH (WITH 6'-0" DOORWAY OPENING). SEE GENERAL NOTE "H".
- B. SELECTION OF RAILCARS FOR THE TRANSPORT OF THIS ITEM SHALL BE IN ACCORDANCE WITH PARAGRAPH B300.4, ORDM 3-4, VOL 3.
- C. NOTICE: SHIPMENTS WILL BE POSITIONED IN THE RAILCAR IN COMPLIANCE WITH THE WEIGHT DISTRIBUTION REQUIREMENTS OF THE AAR. THE NUMBER OF UNITS MAY BE ADJUSTED TO FIT THE RAILCAR CONCERNED ON THE QUANTITY TO BE SHIPPED. HOWEVER, THE APPROVED METHODS CONTAINED HEREIN, FOR FULL OR PARTIAL CARLOAD MUST BE FOLLOWED FOR BLOCKING, BRACING AND STAYING OF THIS ITEM.
- D. FOR DETAIL OF CONTAINER SEE DRAWING NO. 8026313. CONTAINER DIMENSIONS - 60 1/2" LONG x 16-11/16" WIDE x 49-13/16" HIGH. GROSS WEIGHT - 345 LBS (APPROX).
- E. ALL 1 1/2" STRAPPING WILL BE SEALED WITH TWO (2) SEALS AND TWO (2) CRIMPS PER SEAL.
- F. FOR AUTHORIZED METHODS OF BRACING PARTIAL LAYERS, SEE DRG 2045 DRAWING 19-20-2213-5433.
- G. PROCEDURES SHOWN HEREIN ARE APPLICABLE FOR THE SHIPMENT OF EMPTY CONTAINERS.
- H. SPECIFIED CENTER BLOCKING IS ADEQUATE TO RETAIN A FULL CARLOAD IN A 50'-6" CAR; INCREASE QUANTITY OF PIECE 2 AS REQUIRED.

BILL OF MATERIAL (8'-6" CAR)		
LUMBER	LINEAL FEET	BOARD FEET
1" x 2"	1091	103
1" x 4"	204	60
2" x 2"	17	6
2" x 4"	19	13
2" x 6"	139	139
NAILS	NO. REQD	POUNDS
8d (2")	272	1 1/2
10d (3")	93	1 1/2
12d (3 1/2")	62	1 1/2
10d (3 1/2")	20	1/2
STRAPPING, STEEL, 1 1/2" x .075" - 76' REQD - 11 LBS		

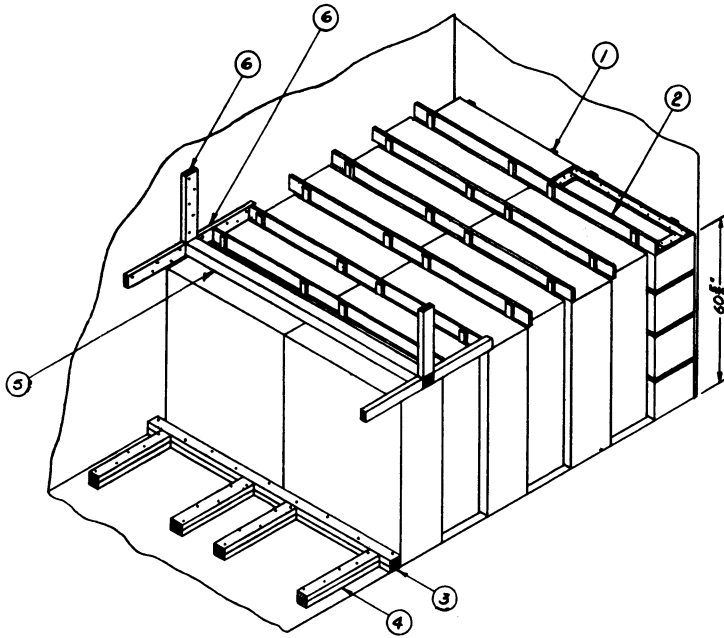
FOR 9'-2" CAR ADD 9 BOARD FEET OF LUMBER.

MATERIAL SPECIFICATIONS

LUMBER: SEE PAR. 0400, ORDM 3-4, VOL 3.
 NAILS: COMMON, CEMENT COATED, FED SPEC FF-B-100.
 ALTERNATIVE: ANNULAR-RING TYPE NAIL OF SAME SIZE.
 STRAPPING, STEEL: TYPE 1, GRADE 1 "A" OR "C", FED SPEC 89-3-207.

LOAD AS SHOWN (8'-6" CAR)

ITEM	QUANTITY	WEIGHT
CONTAINER	104	35,000 LBS (APPROX).
DUMMAGE		1,039 LBS
TOTAL WEIGHT		36,919 LBS



TYPICAL LCL

KEY NUMBERS

- ① 1" x 2" x 6' (4 REQD). NAIL TO CAR END WALL W/5-6d NAILS.
- ② ANTI-CHAFING BOARD (6 REQD). SEE DETAIL, PAGE 2. LAST TWO (2) ANTI-CHAFING BOARDS MUST BE CUT 1 1/2" SHORT EACH END TO PROVIDE CLEARANCE FOR PIECE ⑥
- ③ 2" x 4" x CAR WIDTH (DOUBLED) (1 REQD). NAIL FIRST PIECE TO CAR FLOOR W/1-15d NAIL EVERY 12". NAIL SECOND PIECE TO FIRST W/1-40d NAIL EVERY 12".
- ④ 2" x 4" x 36" (DOUBLED) (4 REQD). NAIL FIRST PIECE TO CAR FLOOR W/7-16d NAILS. NAIL SECOND PIECE TO FIRST W/7-40d NAILS.
- ⑤ 4" x 4" x CAR WIDTH (1 REQD). POSITION AS SHOWN.
- ⑥ 2" x 4" x 24" (5 REQD). NAIL TO CAR WALL W/5-12d NAILS.

BILL OF MATERIAL (8'-6" CAR)

LUMBER	LINEAL FEET	BOARD FEET
1" x 2"	149	25
1" x 4"	51	17
2" x 4"	45	30
4" x 4"	9	12
NAILS	NO. REQD	POUNDS
6d (2")	68	1/2
12d (3 1/4")	30	1/2
16d (3 1/2")	33	1/2
40d (5")	33	2