

HONEST JOHN

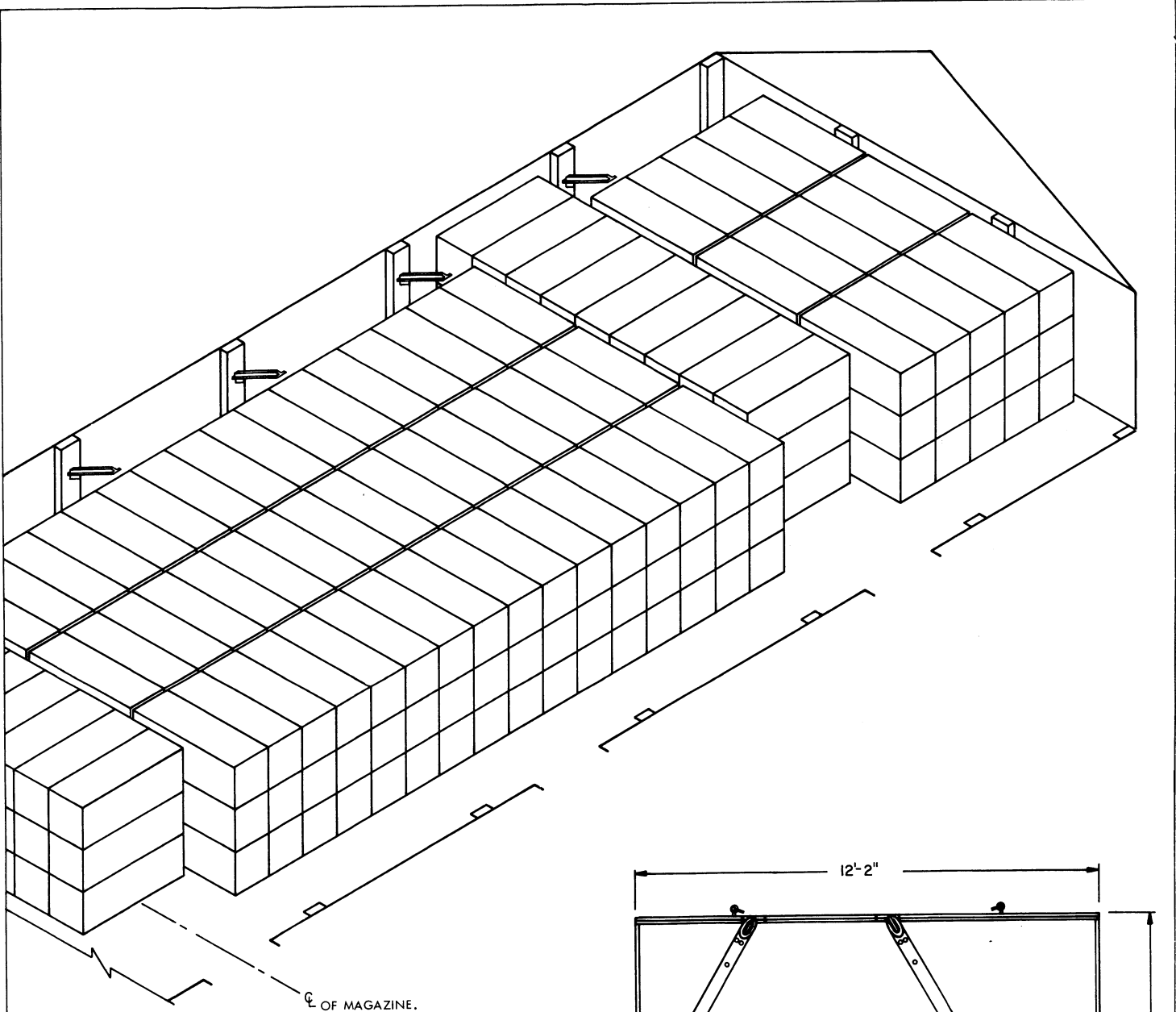
STORAGE IN STANDARD MAGAZINE
OF WARHEAD ASSEMBLY, 762 MM
ROCKET, EMPTY, PACKED ONE PER
WOODEN CONTAINER

INDEX

<u>ITEM</u>	<u>PAGE(S)</u>
GENERAL NOTES-----	3
STORAGE PROCEDURES FOR LUMBER/PLYWOOD SHEATHED CONTAINER--	2,3
STORAGE PROCEDURES FOR XM473 CONTAINER-----	4,5

DRAFTSMAN <i>K.S. J. C. B.</i>	TRACER	ENGINEER <i>DIW / 616</i>	SUBMITTED <i>Ralph D. McKinnis</i> <small>COLONEL ORD. CORPS U.S.A.</small>
CHECKER <i>R.H. G.W.P.</i>	CHECKER <i>W.B. AAL</i>	ENGINEER	EXAMINED <i>John Taylor</i> <small>ORD. CORPS U.S.A.</small>
REVISIONS			APPROVED BY ORDER OF THE CHIEF OF ORDNANCE <i>Andrew W. Heid</i> <small>ORD. CORPS U.S.A.</small>
1	2-20-61	<i>Andrew W. Heid</i>	ORDNANCE CORPS U.S.A. 15 NOVEMBER 1954
2	MAR 70	<i>Andrew W. Heid</i>	
			ORDNANCE CORPS U.S.A.
			15 NOVEMBER 1954
			CLASS DIVISION DRAWING FILE
			19 48 5011 GM2A3

DO NOT SCALE

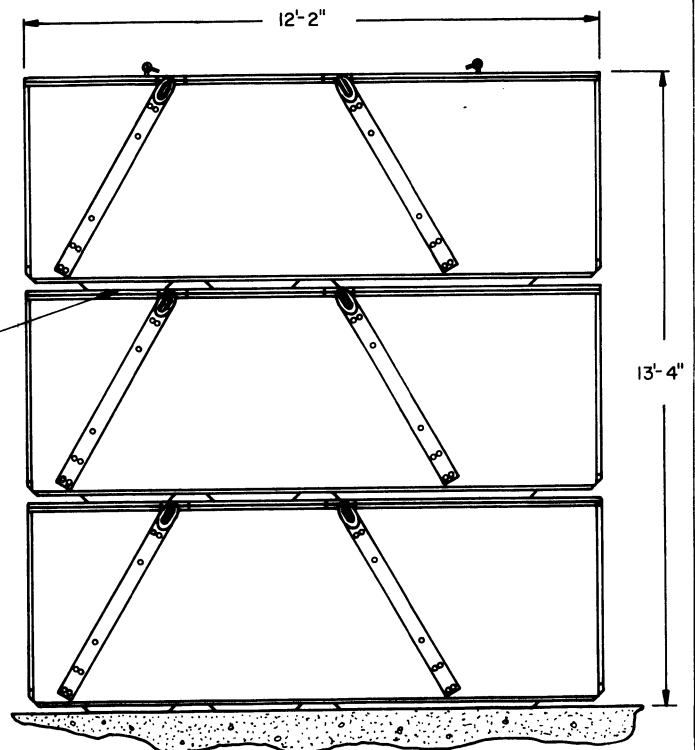


ISOMETRIC VIEW

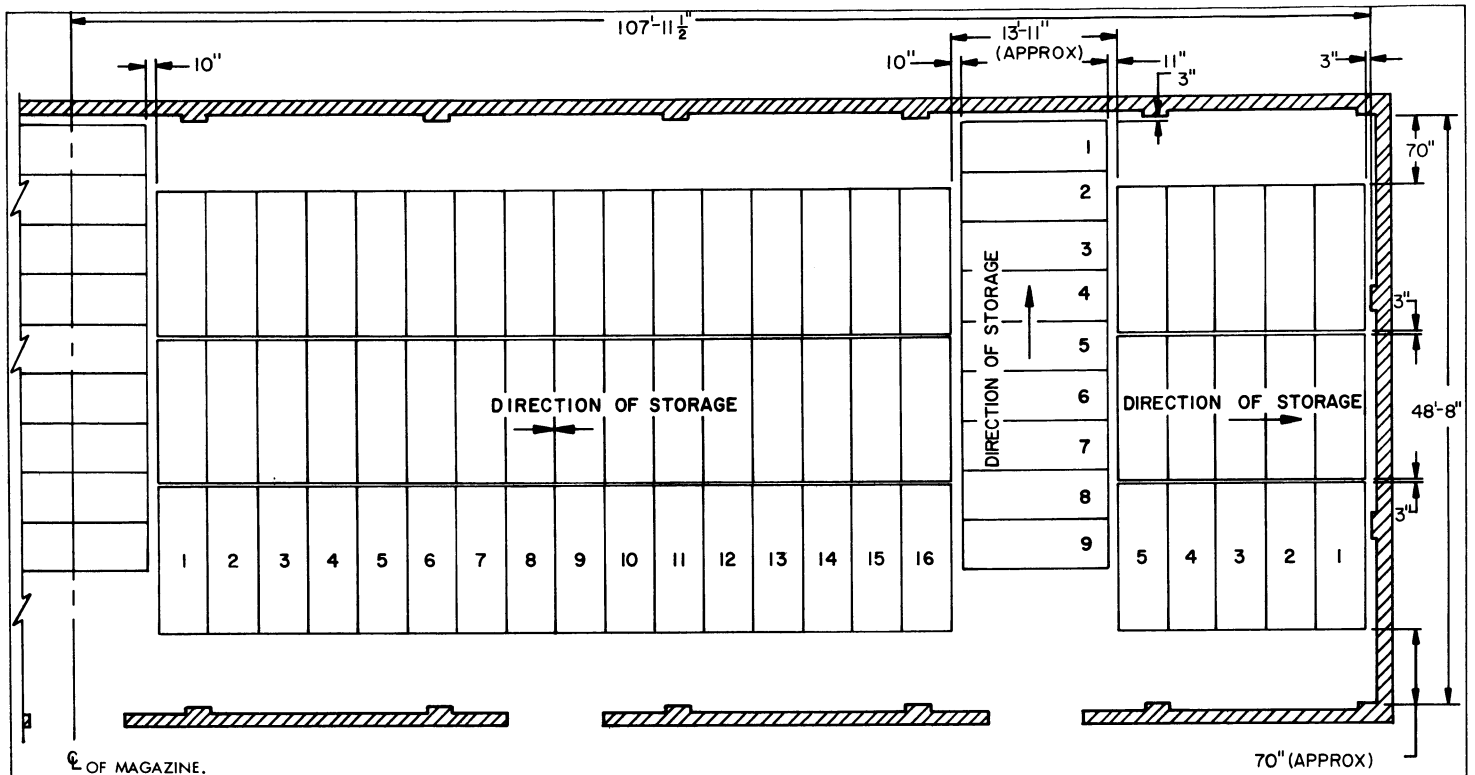
ONE-HALF OF A STANDARD
MAGAZINE IS SHOWN.
STORAGE IS SYMMETRICAL
ABOUT THE CENTER LINE OF
THE MAGAZINE.

☞ OF MAGAZINE.

SEE GENERAL NOTE "H".



TYPICAL STACK



PLAN VIEW

ONE-HALF OF A STANDARD MAGAZINE.

STORAGE AS SHOWN

ONE-HALF OF A STANDARD MAGAZINE.

ITEM	QUANTITY
SHEATHED CONTAINER	----- 229

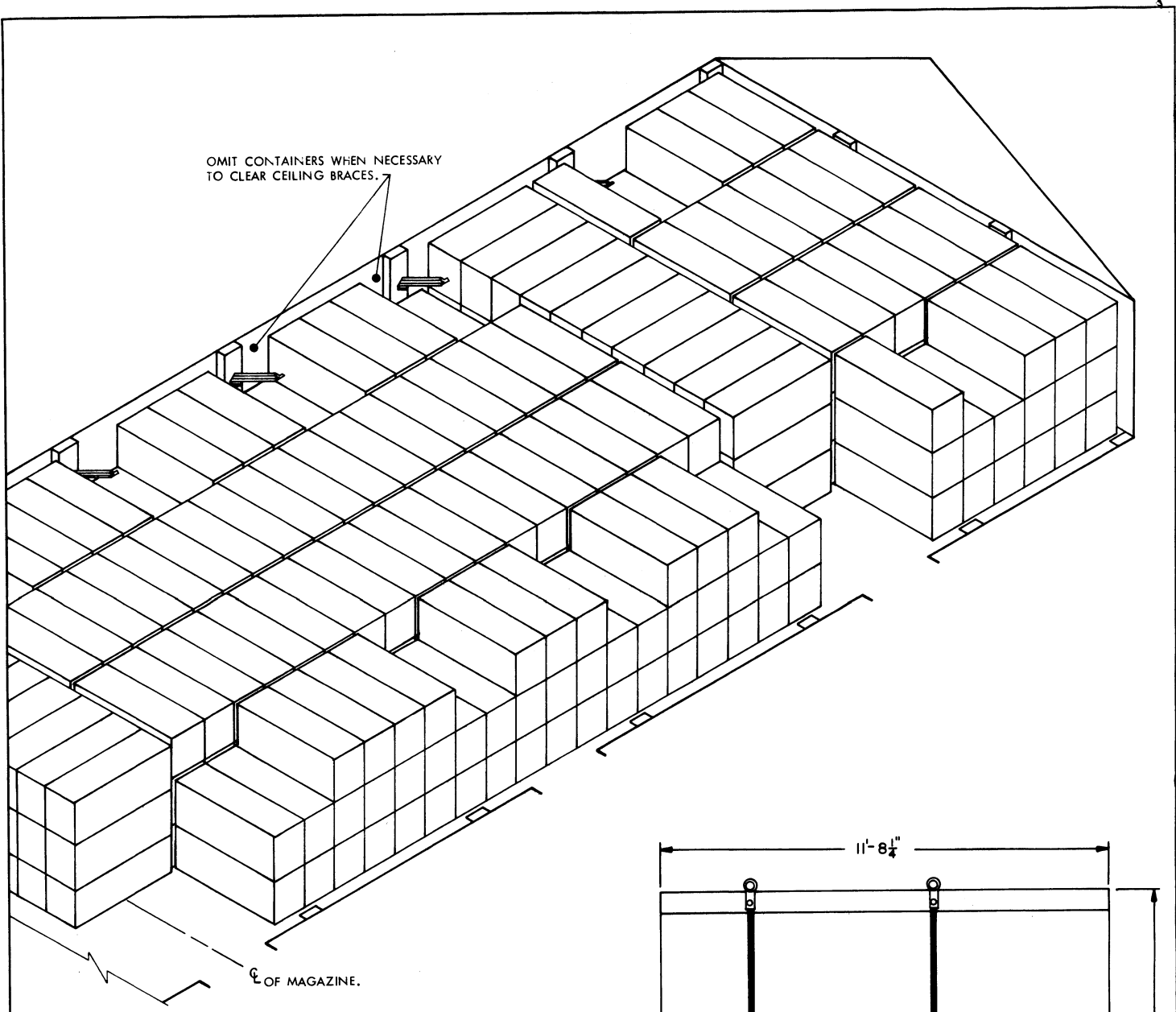
REVISIONS

REVISION NO. 2, DATED MARCH 1970, CONSISTS OF:

1. DELETING ALL REFERENCE TO THE CORPORAL GUIDED MISSILE.
2. CHANGING STORAGE PLAN FOR THE LUMBER/PLYWOOD SHEATHED CONTAINERS.
3. ADDING PROCEDURES FOR STORAGE OF THE XM473 CONTAINER.
4. CHANGES AS NECESSARY TO UPDATE DRAWING FORMAT.

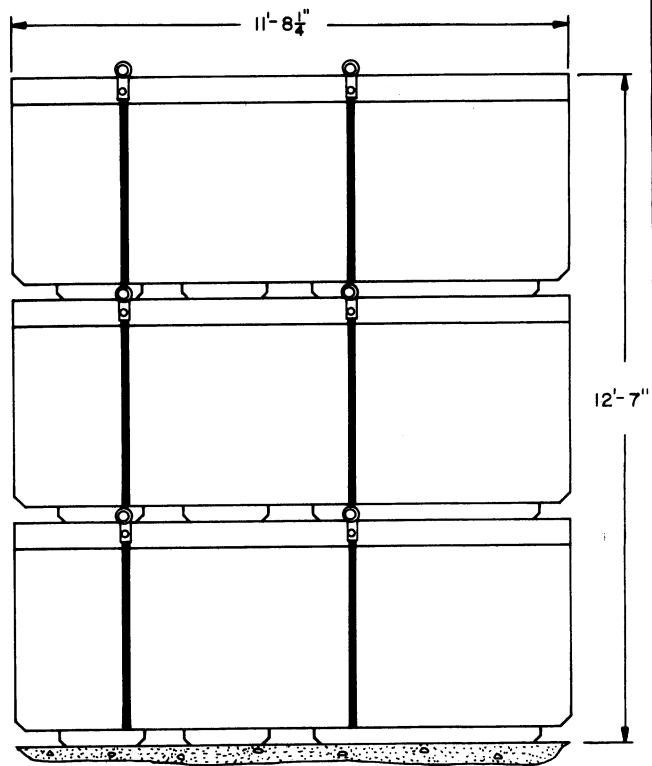
GENERAL NOTES

- A. THIS DOCUMENT HAS BEEN PREPARED AND ISSUED IN ACCORDANCE WITH AMCR 740-13, AND AUGMENTS TM 743-200-1 (CHAPTER 5).
- B. FOR DETAILS OF THE LUMBER SHEATHED CONTAINER SEE DRAWING NO. 8026346.
CONTAINER DIMENSIONS ----- 146" LONG X 49-5/8" WIDE X 5'-1/2" HIGH.
GROSS WEIGHT ----- 1,922 POUNDS (APPROX).
- C. FOR DETAILS OF THE PLYWOOD SHEATHED CONTAINER SEE DRAWING NO. 8100000.
CONTAINER DIMENSIONS ----- 144" LONG X 49-5/8" WIDE X 56-1/2" HIGH.
GROSS WEIGHT ----- 1,416 POUNDS (APPROX).
- D. FOR DETAILS OF THE XM473 CONTAINER SEE DRAWING NOS. 8824908 AND 8881082.
CONTAINER DIMENSIONS ----- 140-1/4" LONG X 44-1/4" WIDE X 50-3/8" HIGH.
GROSS WEIGHT ----- 1,410 POUNDS (APPROX).
- E. AISLE DIMENSIONS AS SHOWN HEREIN MAY BE ADJUSTED TO SUIT LOCAL CONDITIONS AND/OR AVAILABLE MATERIALS HANDLING EQUIPMENT.
- F. STACKS ARE LIMITED TO THREE (3) CONTAINERS HIGH IN STANDARD MAGAZINES WHICH HAVE CEILINGS. IN STANDARD MAGAZINES THAT DO NOT HAVE CEILINGS, CONTAINERS MAY BE STACKED BETWEEN THE TRUSSES TO WITHIN 18" OF ROOF RAFTERS AS LONG AS THE MAXIMUM FLOOR LOAD IS NOT EXCEEDED AND THE STABILITY OF THE STACK IS MAINTAINED.
- G. MAXIMUM FLOOR LOADS PRESCRIBED BY THE LOCAL STANDARDS WILL NOT BE EXCEEDED.
- H. IF FORKS OF LIFT TRUCK ARE OF GREATER THICKNESS THAN THE SKIDS OF THE LUMBER OR PLYWOOD SHEATHED CONTAINER, POSITION 1" X 4" OR 2" X 4" BY SKID LENGTH MATERIAL, AS REQUIRED, UNDER EACH SKID TO FACILITATE WITHDRAWAL OF HANDLING EQUIPMENT.

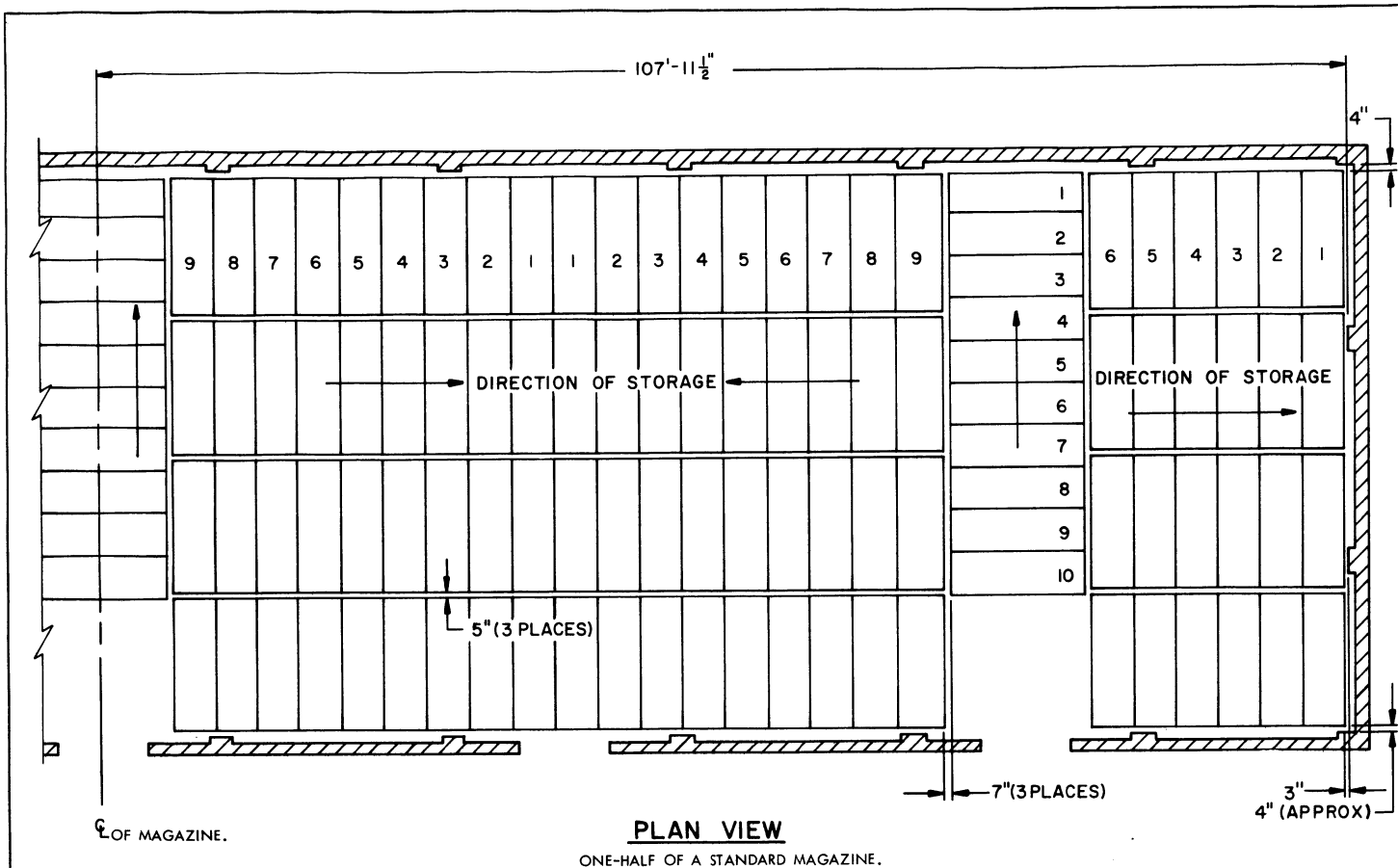


ISOMETRIC VIEW

ONE-HALF OF A STANDARD MAGAZINE IS SHOWN. STORAGE IS SYMMETRICAL ABOUT THE CENTER LINE OF THE MAGAZINE.



TYPICAL STACK



STORAGE AS SHOWN

ONE-HALF OF A STANDARD MAGAZINE.

ITEM	QUANTITY
XM473 CONTAINER -----	313

FOR "GENERAL NOTES" SEE PAGE 3.

