

HONEST JOHN

STORAGE IN 60' AND 80' IGLOOS AND 80' STRADLEY MAGAZINES OF ROCKET MOTORS*

<u>ITEM</u>	<u>PAGE(S)</u>
GENERAL NOTES, AND MATERIAL SPECIFICATIONS-----	3
IGLOO STORAGE PROCEDURES-----	2-5
STRADLEY STORAGE PROCEDURES-----	6-9

* M3 SERIES W/IGNITER
M66 SERIES
M66A1

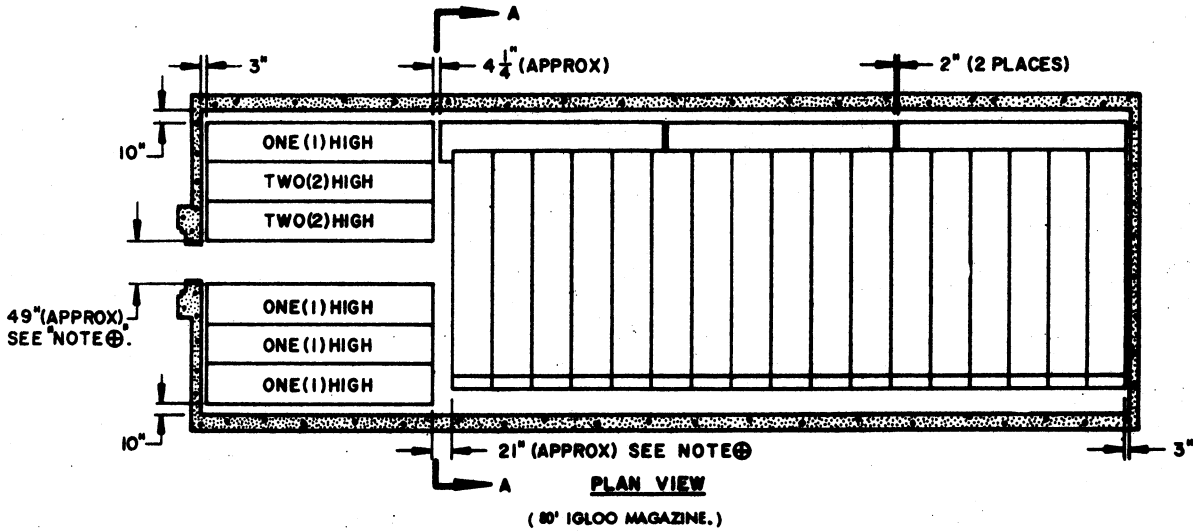
<i>RS/ABE</i>		<i>DIW/DIN</i>	<i>Anderson W. Blair</i>
<i>RHN/GWP</i>	<i>ABE</i>		COLONEL, ORD. CORPS, U.S.A.
REVISIONS			
4	8-1-62	<i>ABE</i>	<i>Anderson W. Blair</i>
3	7-15-69	<i>ABE</i>	<i>Anderson W. Blair</i>
			<i>Anderson W. Blair</i>
			ORDNANCE CORPS U.S.A.
			15 NOVEMBER 1954
	CLASS	DIVISION	DRAWING FILE
	19	48	5010 GMA5

DO NOT SCALE

STORAGE AS SHOWN

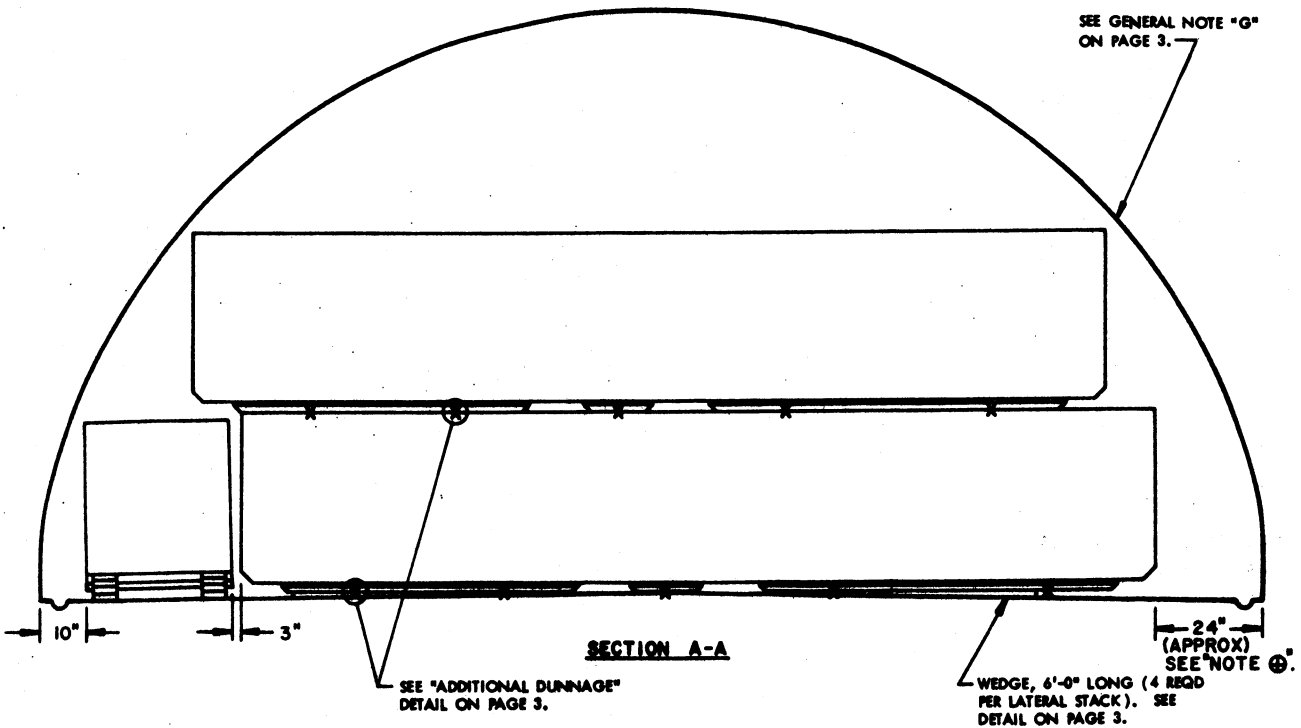
80' IGLOO

ITEM	QUANTITY
ROCKET MOTOR	45



NOTE ⊕:

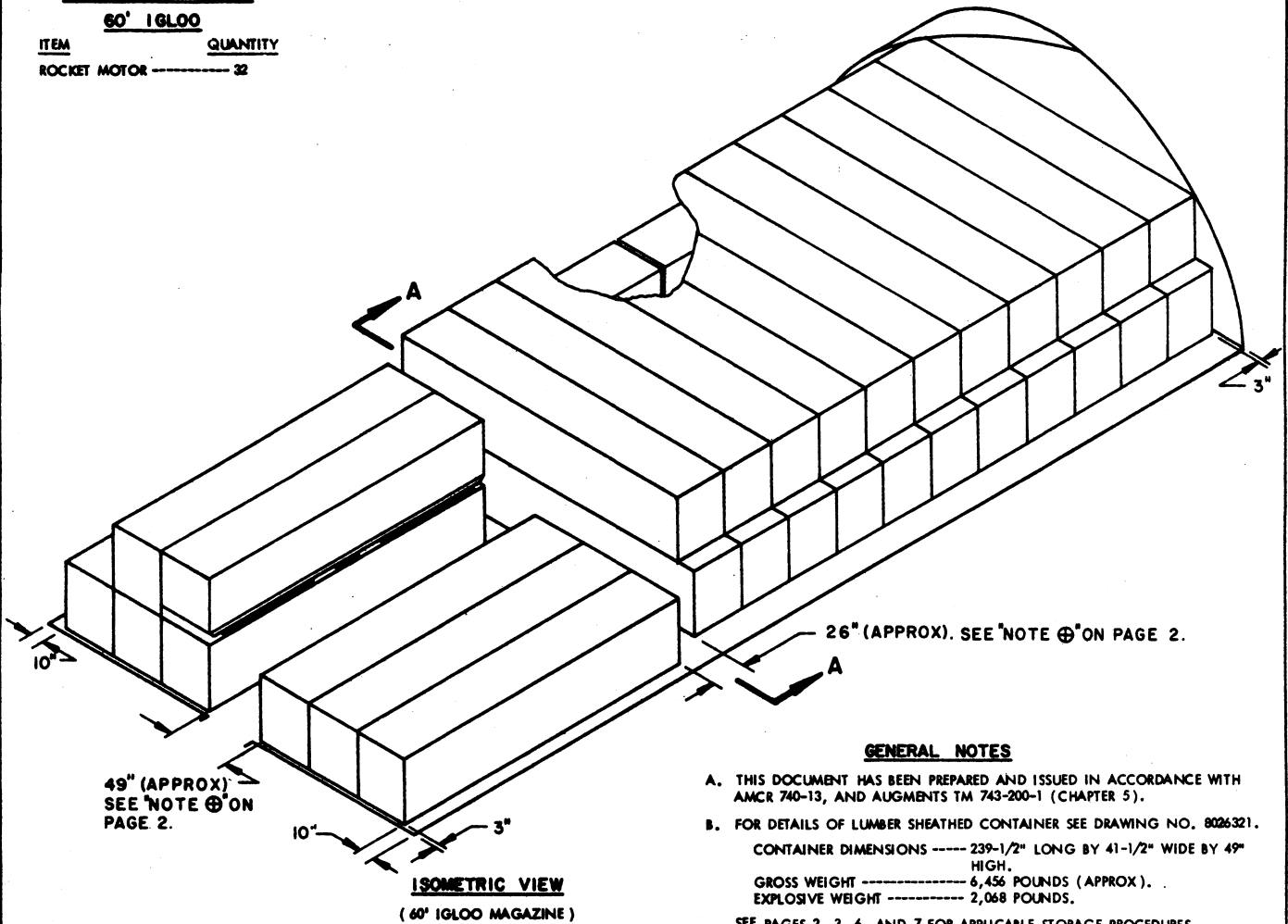
THE DIMENSIONS SHOWN ARE FOR THE CONTAINER WHICH IS 239-1/2" LONG BY 41-1/2" WIDE BY 49" HIGH. THE CONTAINERS WHICH ARE 235" LONG MAY BE STORED IN THE SAME MANNER, WITH SIDE CLEARANCE AISLES ADJUSTED IN WIDTH AS REQUIRED.



STORAGE AS SHOWN

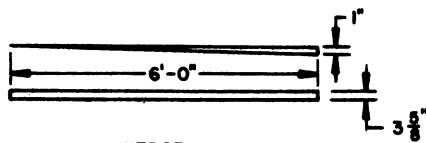
60' IGLOO

ITEM	QUANTITY
ROCKET MOTOR	32

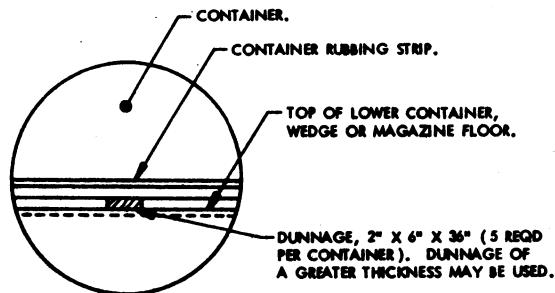


49" (APPROX)
SEE NOTE Ⓞ ON
PAGE 2.

26" (APPROX). SEE NOTE Ⓞ ON PAGE 2.



WEDGE
(2" X 4" MATERIAL)



ADDITIONAL DUNNAGE

THE LETTER X SHOWN IN SECTION A-A INDICATES THE LOCATIONS WHERE ADDITIONAL DUNNAGE MAY BE USED TO FACILITATE REMOVAL OF FORKS IF THE CAPACITY OF AVAILABLE HANDLING EQUIPMENT DICTATES THE USE OF TWO FORK LIFT TRUCKS FOR HANDLING THIS ITEM.

GENERAL NOTES

- A. THIS DOCUMENT HAS BEEN PREPARED AND ISSUED IN ACCORDANCE WITH AMCR 740-13, AND AUGMENTS TM 743-200-1 (CHAPTER 5).
- B. FOR DETAILS OF LUMBER SHEATHED CONTAINER SEE DRAWING NO. 8026321.
CONTAINER DIMENSIONS ----- 239-1/2" LONG BY 41-1/2" WIDE BY 49" HIGH.
GROSS WEIGHT ----- 6,456 POUNDS (APPROX).
EXPLOSIVE WEIGHT ----- 2,068 POUNDS.
SEE PAGES 2, 3, 6, AND 7 FOR APPLICABLE STORAGE PROCEDURES.
- C. FOR DETAILS OF PLYWOOD SHEATHED CONTAINER SEE DRAWING NO. 8100050.
CONTAINER DIMENSIONS ----- 235" LONG BY 42-1/8" WIDE BY 49" HIGH.
GROSS WEIGHT ----- 5,883 POUNDS (APPROX).
EXPLOSIVE WEIGHT ----- 2,068 POUNDS.
SEE PAGES 2, 3, 6, AND 7 FOR APPLICABLE STORAGE PROCEDURES.
- D. FOR DETAILS OF PLYWOOD SHEATHED CONTAINER SEE DRAWING NO. 10048370.
CONTAINER DIMENSIONS ----- 198-1/16" LONG BY 41-5/8" WIDE BY 47-3/8" HIGH.
GROSS WEIGHT ----- 4,801 POUNDS (APPROX).
EXPLOSIVE WEIGHT ----- 1,685 POUNDS.
SEE PAGES 4, 5, 8, AND 9 FOR APPLICABLE STORAGE PROCEDURES.
- E. FOR DETAILS OF PLYWOOD SHEATHED CONTAINER SEE DRAWING NO. 10048161.
CONTAINER DIMENSIONS ----- 235" LONG BY 42-1/8" WIDE BY 49" HIGH.
GROSS WEIGHT ----- 5,883 POUNDS (APPROX).
EXPLOSIVE WEIGHT ----- 1,685 POUNDS.
SEE PAGES 2, 3, 6, AND 7 FOR APPLICABLE STORAGE PROCEDURES.
- F. AISLE DIMENSIONS SHOWN HEREIN MAY BE ADJUSTED TO SUIT LOCAL CONDITIONS AND/OR AVAILABLE MATERIALS HANDLING EQUIPMENT.
- G. STORED CONTAINERS MUST NOT CONTACT THE WALL OF A MAGAZINE. TO PROVIDE FOR THIS MANDATORY CLEARANCE REQUIREMENT, CONTAINERS MAY BE ELIMINATED FROM THE DEPICTED STACKING PATTERN AS NECESSARY, OR AISLE DIMENSIONS MAY BE ADJUSTED AS PER GENERAL NOTE "F" ABOVE.

MATERIAL SPECIFICATIONS

LUMBER: SEE TM 743-200-1, DUNNAGE LUMBER, FED SPEC MM-L-751.

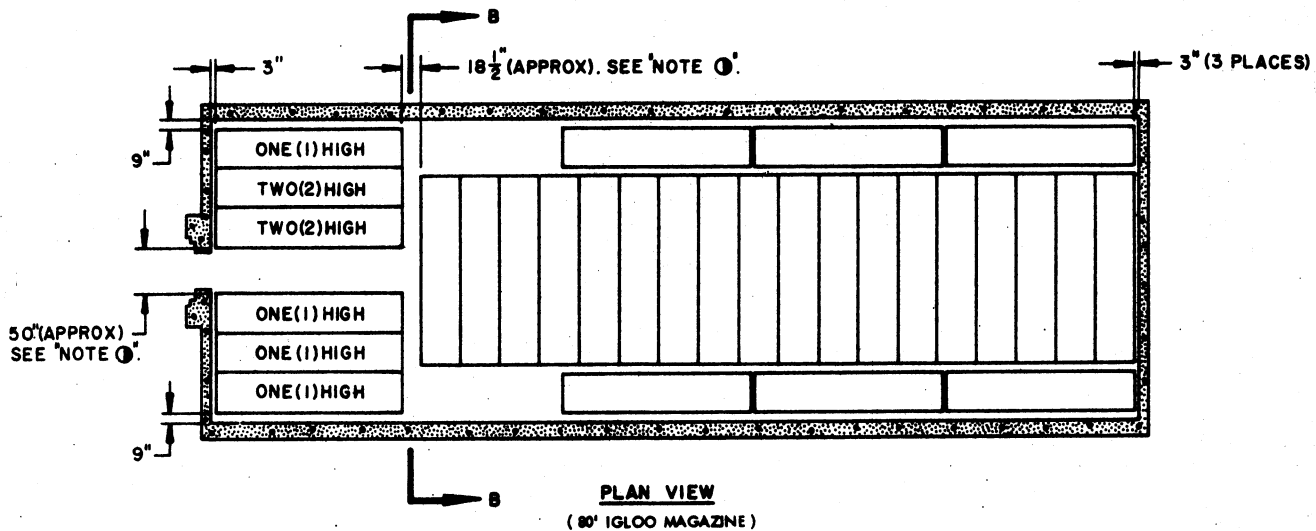
REVISIONS

- REVISION NO. 5 DATED 15 JULY 1969 CONSISTS OF:
1. ADDING PROVISIONS FOR ADDITIONAL CONTAINERS.
 2. ADDING PROCEDURES FOR STRADLEY MAGAZINE.
 3. UP-DATE THE DRAWING FORMAT.

STORAGE AS SHOWN

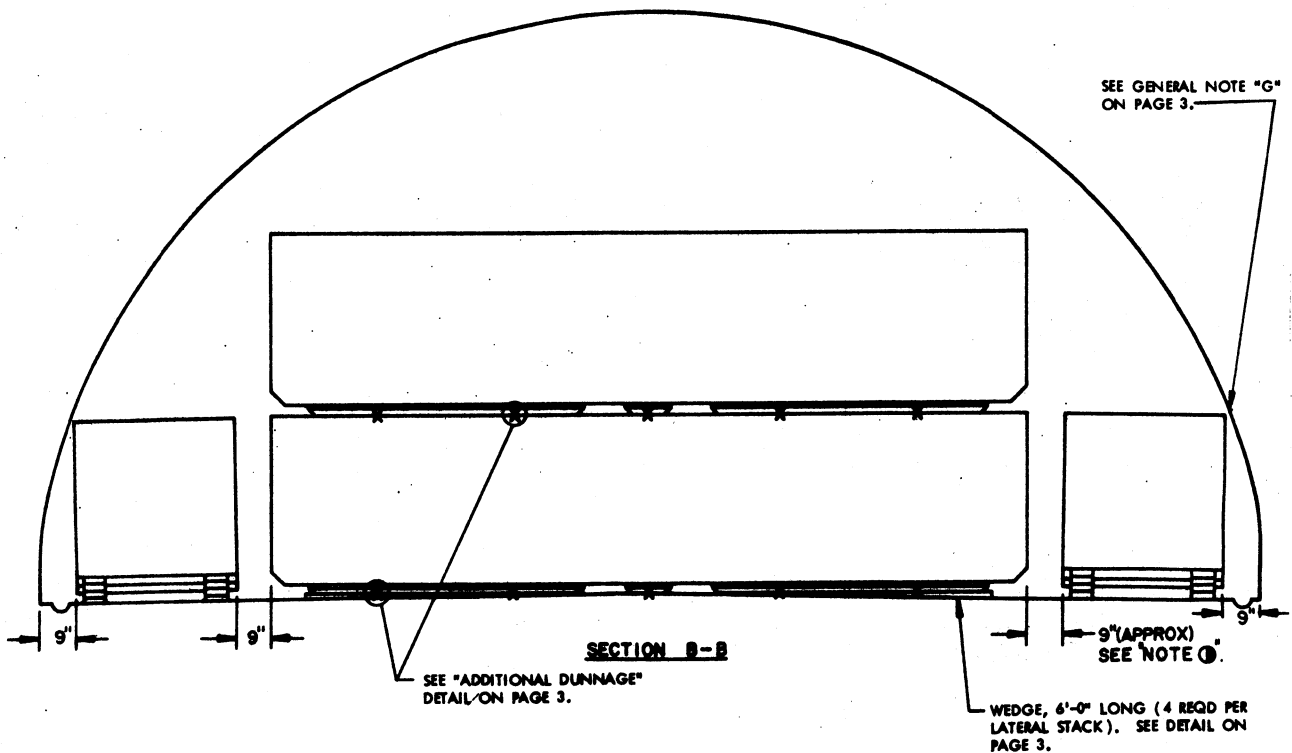
90' IGLOO

ITEM	QUANTITY
ROCKET MOTOR	50



NOTE 1 :

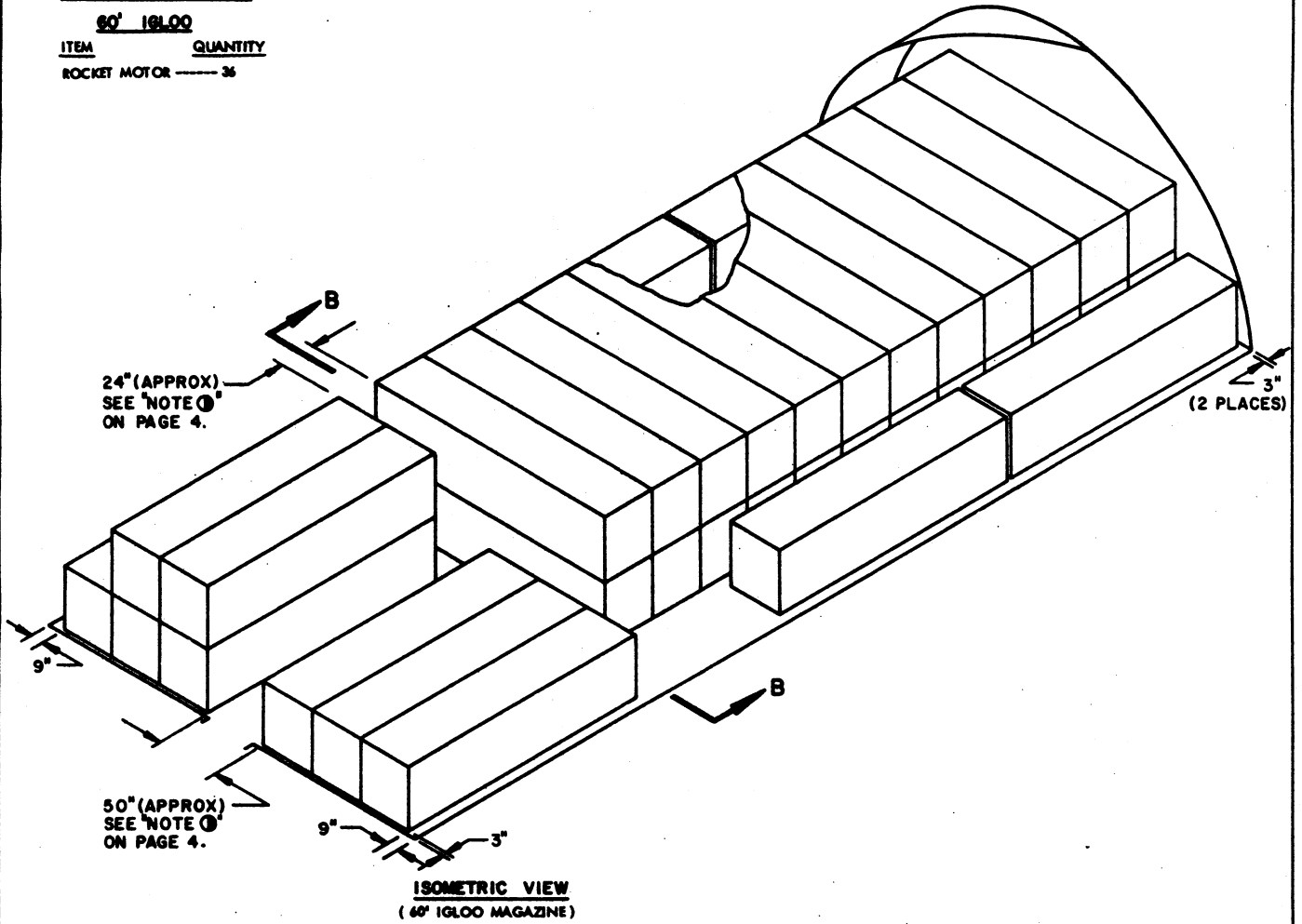
THE DIMENSIONS SHOWN ARE FOR THE CONTAINER WHICH IS 198-1/16" LONG BY 41-5/8" WIDE BY 47-3/8" HIGH. THE THREE LONGER CONTAINERS CAN NOT BE STORED IN THIS MANNER UNLESS THE CONTAINERS ALONG EACH SIDE WALL ARE OMITTED. THE PROCEDURES AS SHOWN ON PAGES 2 AND 3 SHOULD BE USED FOR THE LONGER CONTAINERS.



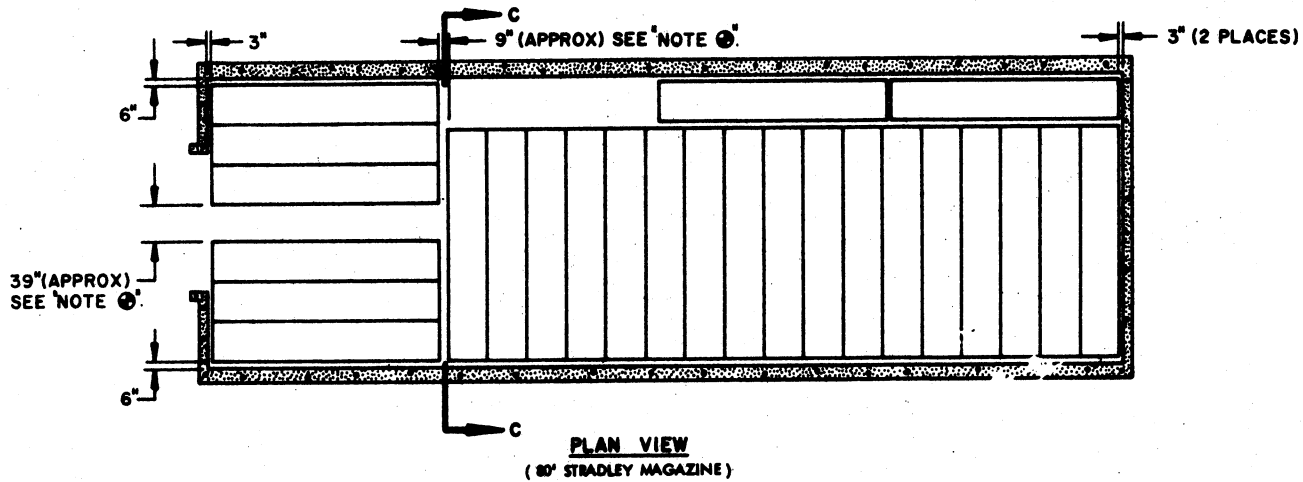
STORAGE AS SHOWN

60' IGLOO

ITEM	QUANTITY
ROCKET MOTOR	36

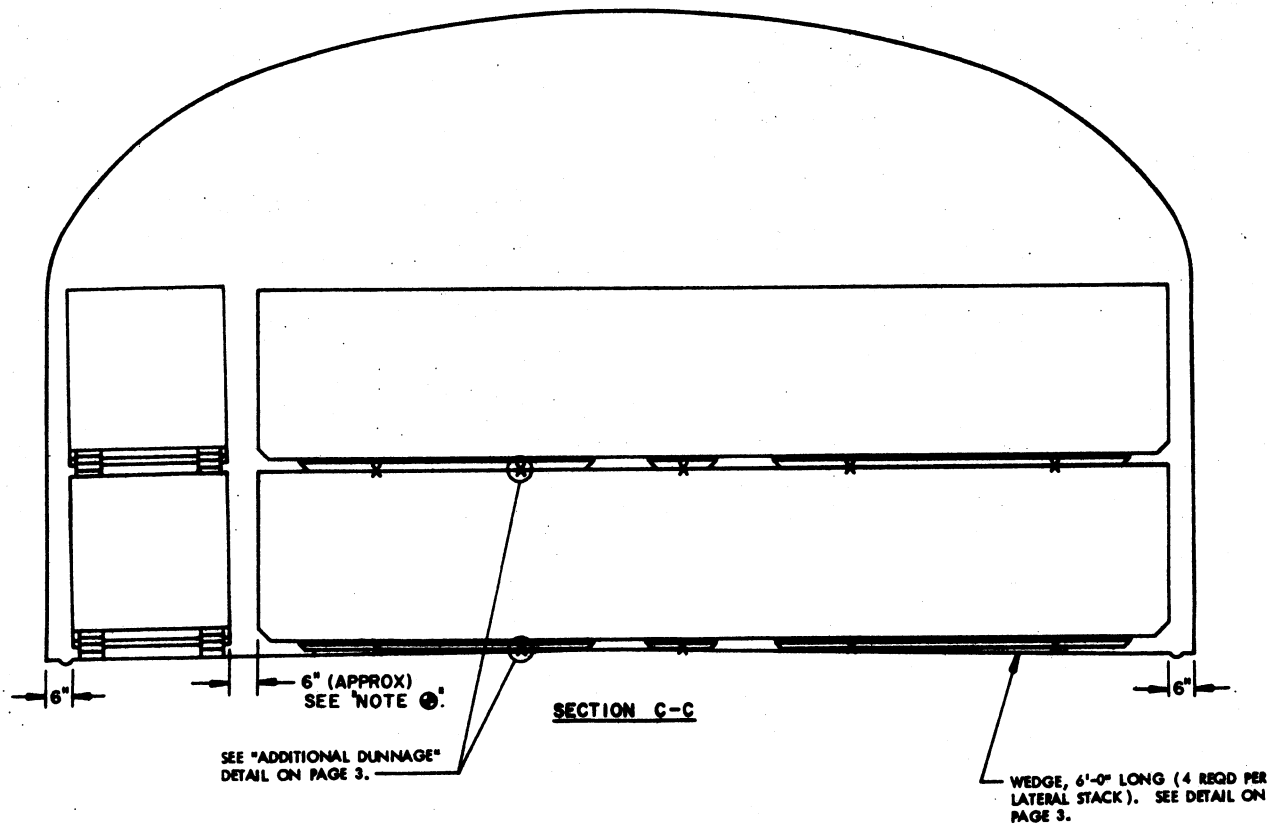


FOR "GENERAL NOTES", SEE PAGE 3.



NOTE ①:

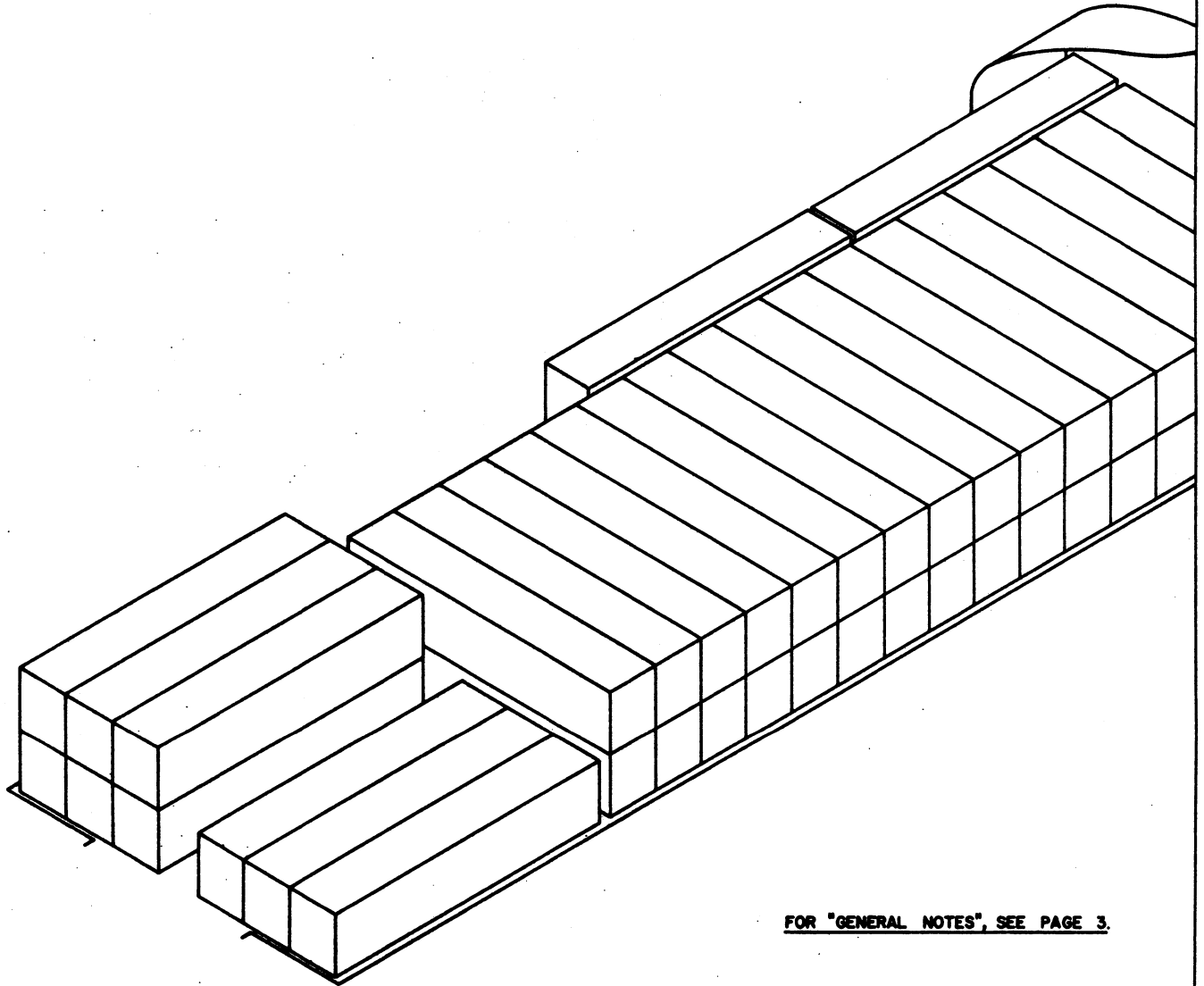
THE DIMENSIONS SHOWN ARE FOR THE CONTAINER WHICH IS 239-1/2" LONG BY 41-1/2" WIDE BY 49" HIGH. THE CONTAINERS THAT ARE 235" LONG MAY BE STORED IN THE SAME MANNER, WITH SIDE CLEARANCE AISLES ADJUSTED IN WIDTH AS REQUIRED.



STORAGE AS SHOWN

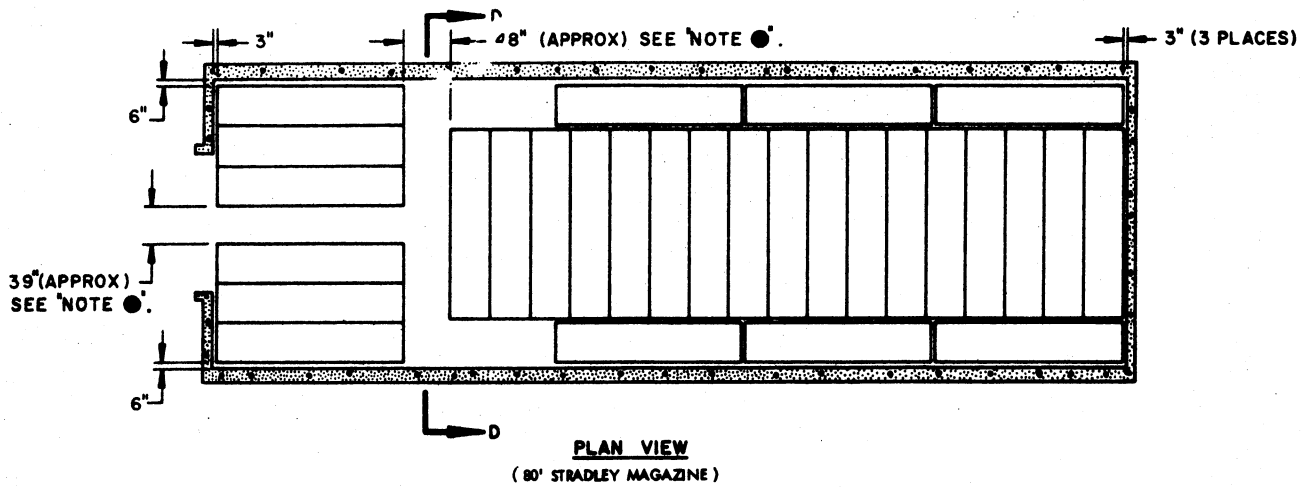
80' STRADLEY

<u>ITEM</u>	<u>QUANTITY</u>
ROCKET MOTOR -----	47

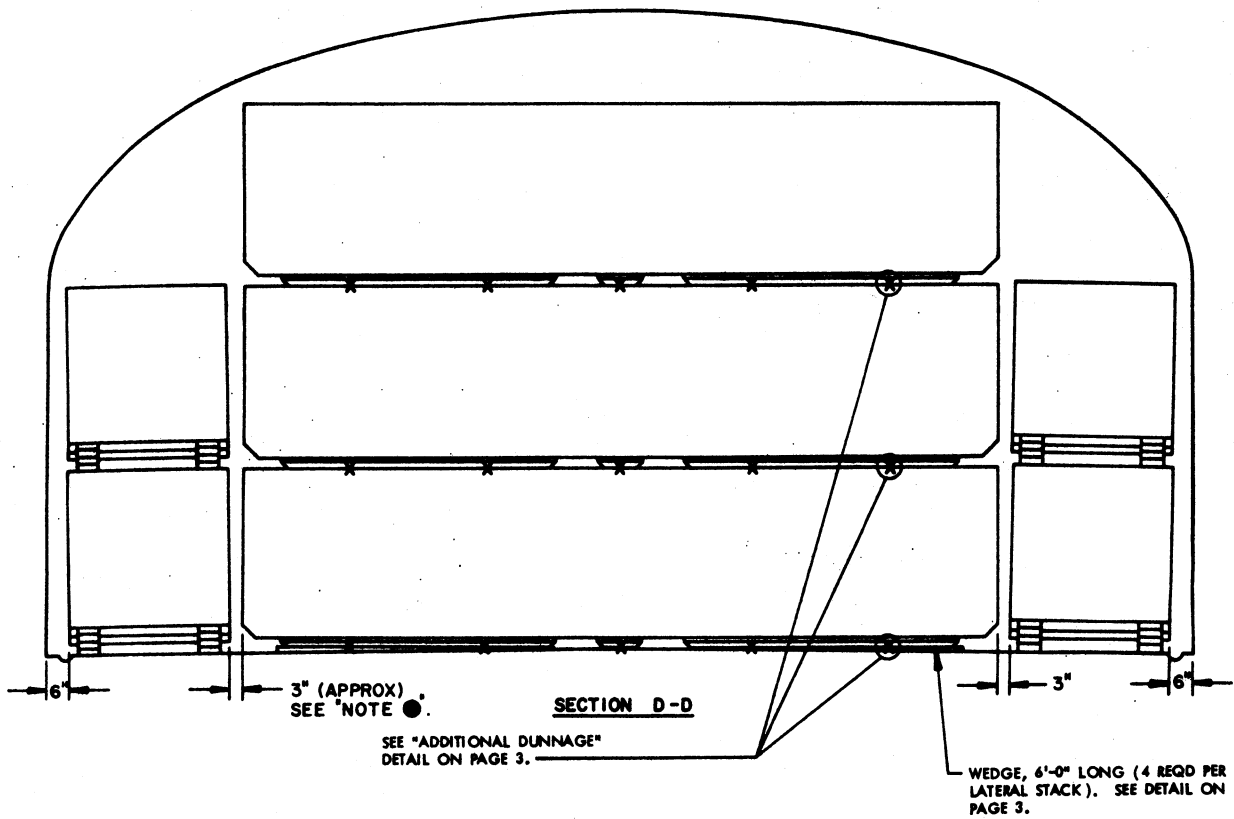


FOR "GENERAL NOTES", SEE PAGE 3.

ISOMETRIC VIEW
(80' STRADLEY MAGAZINE)



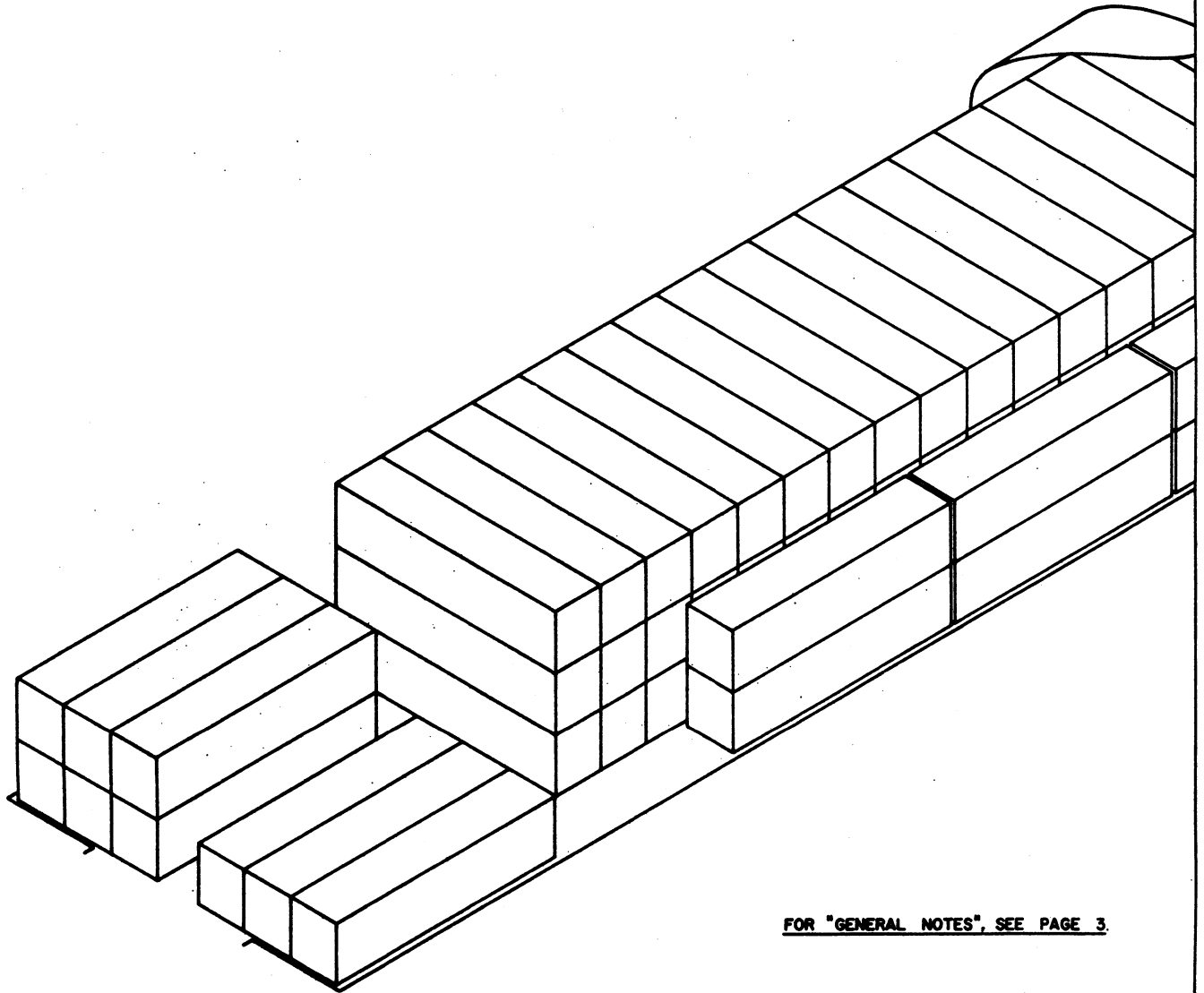
NOTE ● :
 THE DIMENSIONS SHOWN ARE FOR THE CONTAINER WHICH IS 198-1/16" LONG BY 41-5/8" WIDE BY 47-3/8" HIGH. SEE PROCEDURES ON PAGES 6 AND 7 FOR STORAGE GUIDANCE APPLICABLE TO THE LONGER CONTAINERS.



STORAGE AS SHOWN

80' STRADLEY

<u>ITEM</u>	<u>QUANTITY</u>
ROCKET MOTOR	72



FOR "GENERAL NOTES", SEE PAGE 3.

ISOMETRIC VIEW
(80' STRADLEY MAGAZINE)

