

APPROVED BY
 BUREAU OF EXPLOSIVES
A. F. Grossnick
 SUPERVISOR, MILITARY & INTERMODAL SERVICES
 DATE *4/30/76*

LOADING AND BRACING IN VAN TYPE TRAILERS EQUIPPED WITH CONVEYORS AND A MECHANICAL CARGO RESTRAINT SYSTEM, FOR MIXED LOADS OF CHEMICAL BEARING ITEMS (ONE-TON CONTAINER, SMALL PACKAGE AND AMMUNITION)

INDEX

<u>ITEM</u>	<u>PAGE (S)</u>
GENERAL NOTES, AND MATERIAL SPECIFICATIONS -----	2
ITEM DETAILS -----	3
SIX ONE-TON CONTAINER LOAD -----	4, 5
SIX PALLET UNITS OF 155MM SEPARATE LOADING PROJECTILES AND TWO ONE-TON CONTAINER LOAD -----	6, 7
ONE PALLET UNIT OF 105MM PROJECTILES AND ONE VIAL BOX LOAD -----	8, 9
DETAILS -----	10-12

REVISIONS				DRAFTSMAN <i>TR/RE/MS</i>	PROJ ENG <i>CIW/11</i>
				CHECKER <i>GW</i>	LOG ENGRG OFFICE <i>John Kunk</i>
				APPROVED <i>Robert J. ...</i>	
				U.S. ARMY ARMAMENT COMMAND	
				APPROVED BY ORDER OF COMMANDING GENERAL, U.S. ARMY MATERIEL DEVELOPMENT AND READINESS COMMAND (DARCOM) <i>W. E. ...</i>	
				DARCOM AMMO CENTER	
				U.S. ARMY DARCOM DRAWING	
				APRIL 1976	
				CLASS	DIVISION
				DRAWING	FILE
				19	48
				4605	11M7

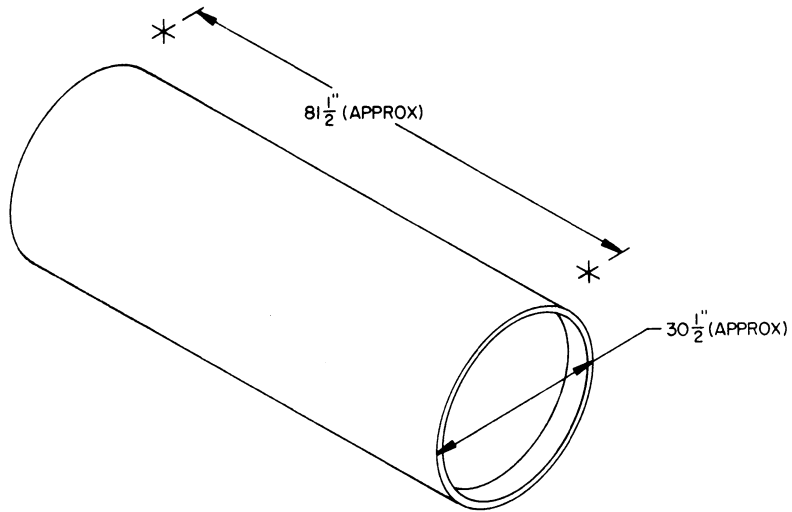
DO NOT SCALE

GENERAL NOTES

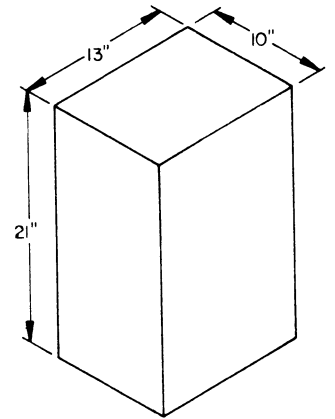
- A. THIS DOCUMENT HAS BEEN PREPARED AND ISSUED IN ACCORDANCE WITH AR 740-1, AND AUGMENT, TM 743-200-1 (CHAPTER 5).
- B. THE OUTLOADING PROCEDURES SPECIFIED HEREIN FOR THREE SEPARATE VAN LOADS ARE APPLICABLE TO THE ONE-TON CONTAINER, 8-ROUND PALLET UNIT OF 155 MM SEPARATE LOADING PROJECTILES, 86-ROUND PALLET UNIT OF 105 MM PROJECTILES AND A BOX-PACKED VIAL.
- C. FOR DETAIL OF THE ONE-TON CONTAINER, SEE TM 3-250 AND PAGE 3 OF THIS DRAWING.
- ITEM DIMENSIONS ----- 6'-9-1/2" LONG X 30-1/2" DIAMETER.
GROSS WEIGHT ----- 3,500 LBS (MAX).
- FOR DETAIL OF THE PALLET UNIT OF 155 MM SEPARATE LOADING PROJECTILES, SEE DRAWING NO. 7599275 AND PAGE 3 OF THIS DRAWING.
- ITEM DIMENSIONS ----- 13-1/2" LONG X 27" WIDE X 31-1/2" HIGH.
GROSS WEIGHT ----- 800 LBS (APPROX).
- FOR DETAIL OF THE PALLET UNIT OF 105 MM PROJECTILES, SEE DRAWING NO. 8837835 AND PAGE 3 OF THIS DRAWING.
- ITEM DIMENSIONS ----- 38-1/8" LONG X 44-3/4" WIDE X 21" HIGH.
GROSS WEIGHT ----- 3,888 LBS (APPROX).
- D. THE DEPICTED PROCEDURES ARE BASED ON TRAILERS WITH INSIDE DIMENSIONS OF 25'-11" LONG BY 7'-2-1/2" WIDE (LESS THICKNESS OF SIDE WALL BELT RAILS) BY 6'-2" HIGH. THESE TRAILERS ARE EQUIPPED WITH BELT RAILS AT HEIGHTS OF 12" AND 33-1/4" AND TWO LOAD-BLOCKING CROSS MEMBERS. CROSS MEMBERS WILL NOT BE RELIED UPON TO RETAIN MORE LADING WEIGHT THAN AS SPECIFIED WITHIN THE DEPICTED LOADS. A CROSS MEMBER WILL BE INSTALLED WITH THE ENDS ATTACHED AS NEARLY AS POSSIBLE IN "MATED" POSITIONS (AT EQUAL DISTANCES FROM THE END OF THE TRAILER). FOR OUTLOADING THE ONE-TON CONTAINERS THE TRAILER USED MUST BE EQUIPPED WITH ROLLER CONVEYORS. SEE PAGE 12 FOR CONVEYOR INSTALLATION GUIDANCE.
- E. CAUTION: NON-COMPATIBLE ITEMS MUST NOT BE OUTLOADED IN THE SAME TRAILER.
- F. UNLESS OTHERWISE SPECIFIED, DUNNAGE MATERIAL SPECIFIED THROUGHOUT THIS DRAWING IS OF NOMINAL SIZE. FOR EXAMPLE, 2" X 6" MATERIAL IS ACTUALLY 1-1/2" THICK BY 5-1/2" WIDE AND 4" X 4" MATERIAL IS ACTUALLY 3-1/2" THICK BY 3-1/2" WIDE.
- G. NOTICE: A STAGGERED NAILING PATTERN WILL BE USED WHEREVER POSSIBLE WHEN NAILS ARE DRIVEN INTO JOINTS OF DUNNAGE ASSEMBLIES. ALSO, A STAGGERED NAILING PATTERN WILL BE USED WHEN LAMINATING DUNNAGE. THE NAILING PATTERN FOR A SECOND PIECE OF LAMINATED DUNNAGE WILL BE ADJUSTED AS REQUIRED SO THAT A NAIL FOR THAT PIECE WILL NOT BE DRIVEN THROUGH ONTO OR RIGHT BESIDE A NAIL IN A FIRST PIECE.
- H. PORTIONS OF THE SEMITRAILER BODIES DEPICTED WITHIN THIS DRAWING, SUCH AS ONE OF THE SIDEWALLS, HAVE NOT BEEN SHOWN IN THE LOAD VIEWS FOR CLARITY PURPOSES.
- J. FOR ADDITIONAL GUIDANCE, ATTENTION IS DIRECTED TO THE "SPECIAL NOTES" SECTIONS WHICH ARE IMMEDIATELY ADJACENT TO THE DEPICTED OUTLOADING METHODS.

MATERIAL SPECIFICATIONS

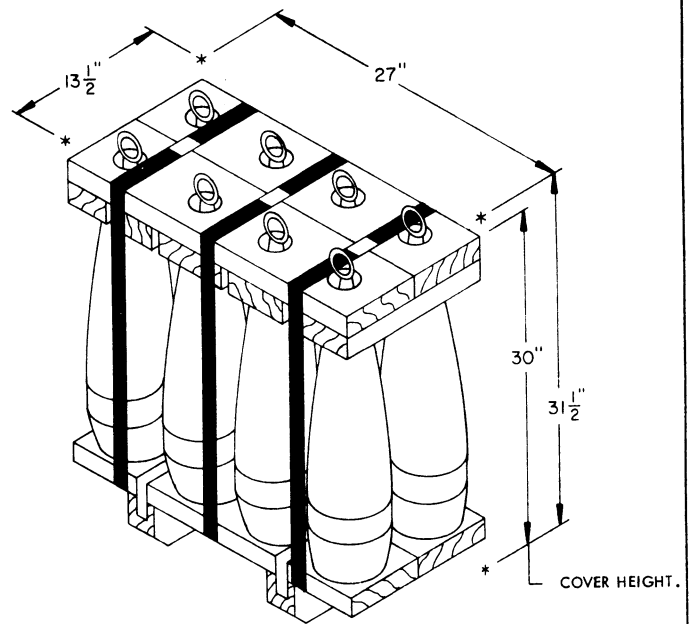
- LUMBER ----- : SEE TM 743-200-1, DUNNAGE LUMBER; FED SPEC MM-L-751.
- NAILS ----- : COMMON, CEMENT COATED OR CHEMICALLY ETCHED,
FED SPEC FF-N-105.
ALT: ANNULAR-RING TYPE NAIL OF THE SAME SIZE.
- STEEL STRAPPING - : CLASS I, TYPE I OR IV, HEAVY DUTY, FINISH A OR B (GRADE 2),
FED SPEC QQ-S-781.
- SEAL, STRAP ----- : COMMERCIAL GRADE.
- PLYWOOD ----- : GROUP B OR C, GRADE C-D (EXTERIOR); FED SPEC NN-P-530.
IF SPECIFIED GRADE IS NOT AVAILABLE, A BETTER EXTERIOR GRADE
MAY BE SUBSTITUTED.
- CONVEYOR ----- : CONVEYOR, ROLLER, GRAVITY, STRAIGHT, 18 INCHES OVERALL
WIDTH X 96 INCHES LONG, 2-1/2" OD ROLLERS, 4-INCH X 5.4
POUNDS PER FOOT CHANNEL SIDE RAILS, 800 POUNDS PER FOOT
CAPACITY MINIMUM, FSC 3910.



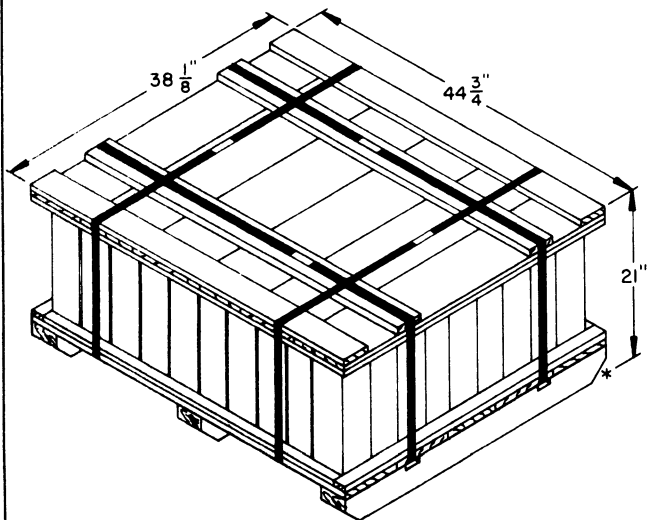
ONE-TON CONTAINER



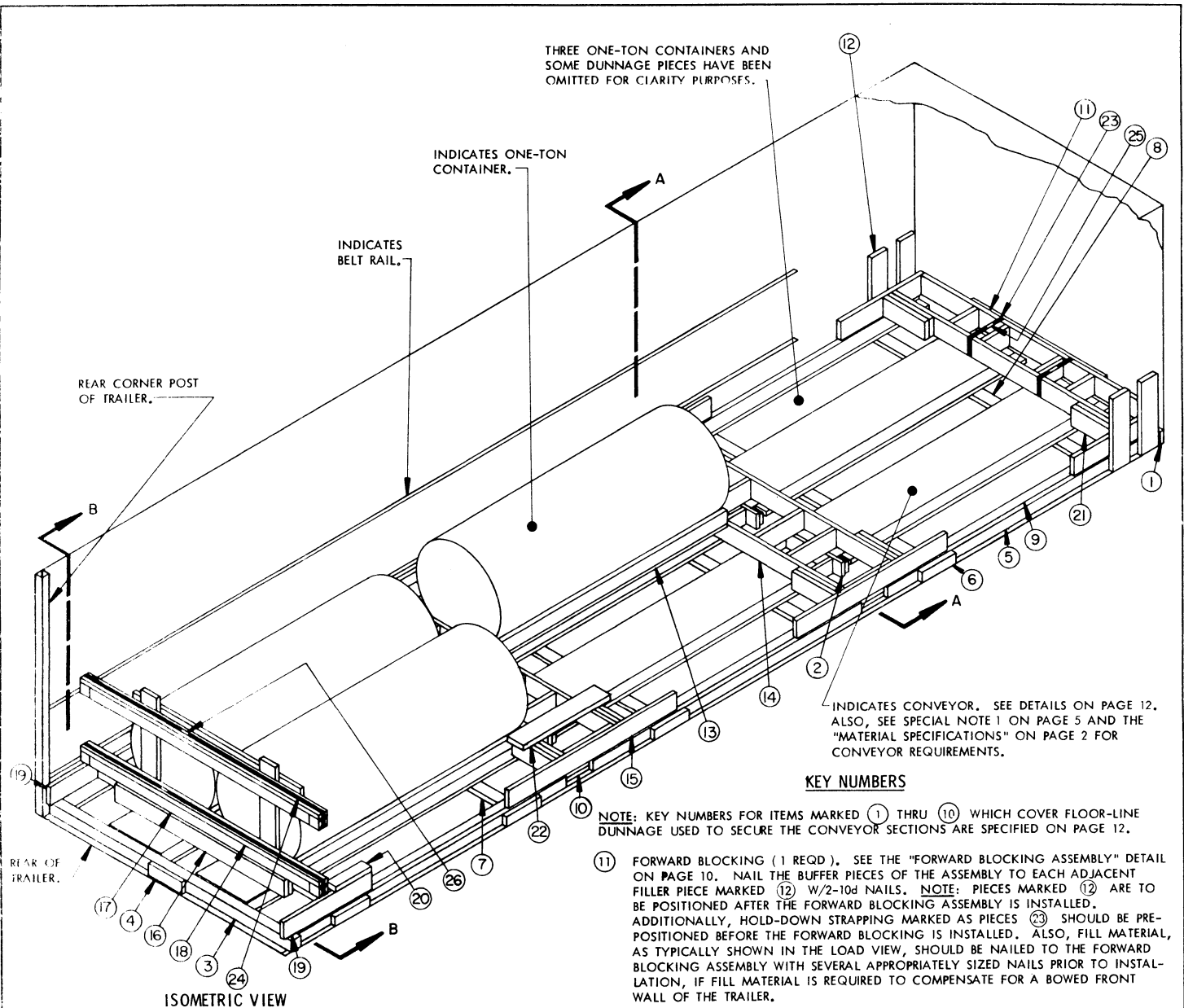
VIAL BOX



PALLET UNIT OF 155 MM SEPARATE
LOADING PROJECTILES



PALLET UNIT OF 105 MM PROJECTILES

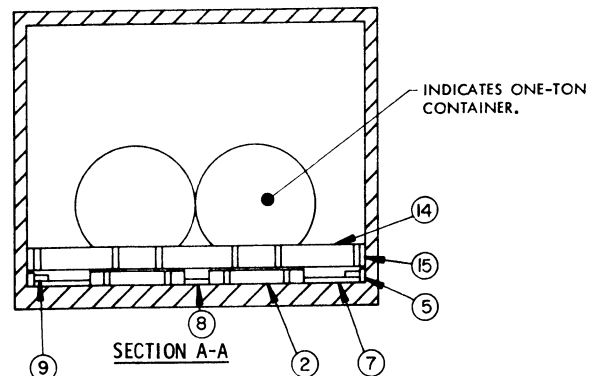
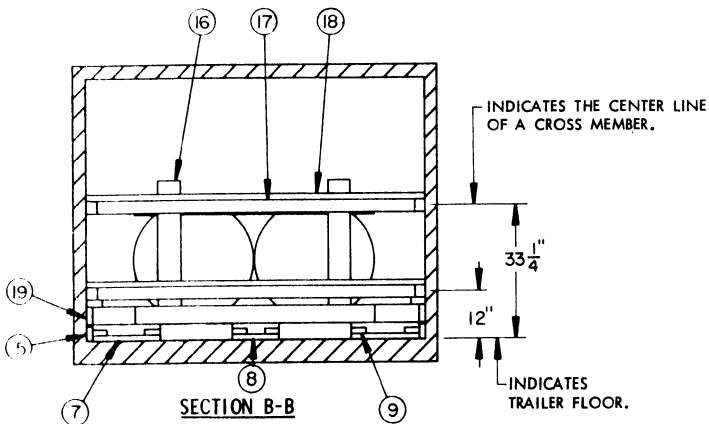


ISOMETRIC VIEW

KEY NUMBERS

- NOTE: KEY NUMBERS FOR ITEMS MARKED ① THRU ⑩ WHICH COVER FLOOR-LINE DUNNAGE USED TO SECURE THE CONVEYOR SECTIONS ARE SPECIFIED ON PAGE 12.
- ⑪ FORWARD BLOCKING (1 REQD). SEE THE "FORWARD BLOCKING ASSEMBLY" DETAIL ON PAGE 10. NAIL THE BUFFER PIECES OF THE ASSEMBLY TO EACH ADJACENT FILLER PIECE MARKED ⑫ W/2-10d NAILS. NOTE: PIECES MARKED ⑫ ARE TO BE POSITIONED AFTER THE FORWARD BLOCKING ASSEMBLY IS INSTALLED. ADDITIONALLY, HOLD-DOWN STRAPPING MARKED AS PIECES ⑬ SHOULD BE PRE-POSITIONED BEFORE THE FORWARD BLOCKING IS INSTALLED. ALSO, FILL MATERIAL, AS TYPICALLY SHOWN IN THE LOAD VIEW, SHOULD BE NAILED TO THE FORWARD BLOCKING ASSEMBLY WITH SEVERAL APPROPRIATELY SIZED NAILS PRIOR TO INSTALLATION, IF FILL MATERIAL IS REQUIRED TO COMPENSATE FOR A BOWED FRONT WALL OF THE TRAILER.
- ⑫ FILLER PIECE, 2" X 6" X 18" (4 REQD). POSITION AS SHOWN.
- ⑬ TON-CONTAINER CRADLE (6 REQD). SEE THE "CRADLE" DETAIL ON PAGE 10.
- ⑭ INTERMEDIATE BLOCKING (2 REQD). SEE THE "INTERMEDIATE BLOCKING ASSEMBLY A" DETAIL ON PAGE 10. NAIL EACH OF THE TWO END STRUTS OF AN ASSEMBLY TO THE ADJACENT BUFFER PIECE MARKED ⑮ W/4-10d NAILS AFTER THE ASSEMBLY AND BUFFER PIECES ARE INSTALLED WITHIN THE TRAILER.
- ⑮ BUFFER PIECE, 2" X 6" X 60" (4 REQD). A BUFFER PIECE WILL BE LONGITUDINALLY LOCATED SO THAT EACH END OVERLAPS A SIDE WALL POST OF THE TRAILER.

(CONTINUED ON PAGE 5)



SIX ONE-TON CONTAINER LOAD

(KEY NUMBERS CONTINUED)

SPECIAL NOTES:

- 16 LOAD-BEARING GATE (1 REQD). SEE THE "LOAD-BEARING GATE A" DETAIL ON PAGE 11.
- 17 CROSS MEMBER (2 REQD). INSTALL AT THE 12" AND 33-1/4" HEIGHTS AS SHOWN IN THE "SECTION B-B" VIEW ON PAGE 4. SEE THE "CROSS MEMBER SECUREMENT" DETAIL ON PAGE 11, WHICH APPLIES TO PIECES MARKED 17, 19, 24 AND 26.
- 18 STRAP RETAINER PIECE, 2" X 3" X 7'-0" (2 REQD).
- 19 REAR BUFFER PIECE, 2" X 6" X 30" (2 REQD). BEFORE NAILING A LOCK PIECE MARKED 20 TO ONE OF THESE PIECES, THE BUFFER PIECE WILL BE LONGITUDINALLY LOCATED SO THAT THE REAR END OVERLAPS ONE-HALF OF A REAR CORNER POST OF THE TRAILER.
- 20 LOCK PIECE, 2" X 4" X 12" (2 REQD). POSITION AFTER THE MOST REARWARD SIDE BLOCKING PIECES MARKED 21 HAVE BEEN INSTALLED AND NAIL TO A SIDE BLOCKING PIECE W/2-10d NAILS AND TO A BUFFER PIECE MARKED 19 W/3-10d NAILS.
- 21 SIDE BLOCKING, 2" X 6" MATERIAL CUT TO A LENGTH FOR A TIGHT FIT BETWEEN A BUFFER PIECE AND A 4" X 4" MEMBER OF A TON-CONTAINER CRADLE MARKED AS PIECE 13 (DOUBLED) (12 REQD). NAIL THE FIRST PIECE TO THE FORWARD BLOCKING ASSEMBLY OR TO AN INTERMEDIATE BLOCKING ASSEMBLY OR TO THE LOAD-BEARING GATE W/5-10d NAILS. NAIL THE SECOND PIECE TO THE FIRST W/5-10d NAILS.
- 22 HOLD-DOWN FOR INTERMEDIATE BLOCKING ASSEMBLY, 2" X 6" X 30" (4 REQD). POSITION WITH ONE EDGE AGAINST THE OUTWARD SIDE WALLS OF TWO LONGITUDINALLY ADJACENT ONE-TON CONTAINERS. NAIL TO AN INTERMEDIATE BLOCKING ASSEMBLY MARKED 14 AND/OR TO THE ADJACENT SIDE BLOCKING PIECES MARKED 21 W/2-10d NAILS AT EACH END.
- 23 HOLD-DOWN STRAP, 3/4" X .035" OR .031" BY A LENGTH TO SUIT STEEL STRAPPING (2 REQD). INSTALL TO FORM A COMPLETE LOOP AROUND THE TWO FORWARD ROLLS WITHIN A FRONT CONVEYOR SECTION AND THE FORWARD BLOCKING ASSEMBLY MARKED 11. THESE HOLD-DOWN STRAPS SHOULD ENIRCLE THE FORWARD BLOCKING ASSEMBLY NEAR AN ASSEMBLY STRUT AS SHOWN WITHIN THE LOAD VIEW.
- 24 CROSS MEMBER RETAINING STRAP, 1-1/4" X .035" OR .031" X 16'-6" LONG STEEL STRAPPING (2 REQD). INSTALL STRAPPING TO FORM A COMPLETE LOOP AROUND A CROSS MEMBER MARKED 17, A STRAP RETAINER PIECE MARKED 18, AND A BELT RAIL ON EACH SIDE WALL OF THE TRAILER. BRING ENDS OF STRAPPING TOGETHER ON TOP OF ENCIRCLED COMPONENTS, TENSION AND SEAL. SECURE STRAPPING NEAR EACH END OF THE STRAP RETAINER PIECE MARKED 18 WITH TWO PARTIALLY DRIVEN 10d NAILS (ONE ON EACH SIDE OF STRAPPING). BEND A SET OF TWO NAILS OVER AND ACROSS THE STRAPPING TO SECURE IT.
- 25 SEAL FOR 3/4" STRAPPING (2 REQD). DOUBLE CRIMP EACH SEAL.
- 26 SEAL FOR 1-1/4" STRAPPING (2 REQD). DOUBLE CRIMP EACH SEAL.

- 1. THE LOAD SHOWN ON PAGE 4 DEPICTS A LOAD OF SIX ONE-TON CONTAINERS IN A 25'-11" LONG (INSIDE LENGTH) TRAILER. ALSO, THE TRAILER IS EQUIPPED WITH SIX 8-FOOT SECTIONS OF ROLLER CONVEYOR AND A MECHANICAL CARGO RESTRAINT SYSTEM.
- 2. PIECES MARKED 1 THROUGH 10 MUST BE INSTALLED IN THE TRAILER PRIOR TO THE PLACEMENT OF ANY CONTAINERS INTO THE TRAILER, AND PIECES MARKED 11 AND 12 AND 23 AND 25 SHOULD BE INSTALLED PRIOR TO LOADING CONTAINERS.
- 3. TWO LATERALLY ADJACENT CONTAINERS MUST BE POSITIONED WITHIN A LOAD SO THAT THEY CONTACT EACH OTHER ALONG THEIR SIDE WALLS OR ARE WITHIN 1/4 INCH OF BEING IN CONTACT. THIS REQUIREMENT IS NECESSARY TO INSURE EFFECTIVE SIDE BLOCKING FROM THE DUNNAGE INSTALLED FOR THAT PURPOSE.
- 4. WHEN LOADING CONTAINERS, TWO CONTAINERS SHOULD BE LOADED SIDE-BY-SIDE AT THE REAR OF THE TRAILER, THEN PUSHED FORWARD TOGETHER TO THEIR SHIPPING LOCATION. NOTICE: TO FACILITATE LOADING OPERATIONS AND TO ENHANCE SAFETY, A MECHANICAL CROSS MEMBER CAN BE TEMPORARILY INSTALLED AT THE REAR OF A LOAD UNIT OF TWO CONTAINERS TO HOLD THE UNIT IN PLACE WHILE INSTALLING SUBSEQUENTLY REQUIRED DUNNAGE OR LOADING TWO MORE CONTAINERS.
- 5. IF APPROVED AND PROPERLY SIZED CRANE-TYPE MATERIALS HANDLING EQUIPMENT IS AVAILABLE, A TON-CONTAINER CAN BE LIFTED AND SET DOWN ON A CRADLE ASSEMBLY WHICH HAS BEEN PRE-POSITIONED ON ONE OF THE CONVEYOR SECTIONS AT THE REAR OF THE TRAILER. IF LOADING IS ACCOMPLISHED AT A FIXED OR PORTABLE LOADING DOCK FACILITY AND CRANE-TYPE EQUIPMENT IS NOT TO BE USED, ONE ADDITIONAL SECTION OF ROLLER CONVEYOR CAN BE ADVANTAGEOUSLY USED DURING LOADING OPERATIONS. THE ADDITIONAL CONVEYOR SECTION CAN BE PLACED ON THE DOCK IN ALIGNMENT WITH A CONVEYOR WITHIN THE TRAILER. AFTER A CRADLE AND A CONTAINER ARE PLACED ONTO THE EXTRA CONVEYOR SECTION BY USING APPROPRIATE HANDLING EQUIPMENT, THE CRADLE WITH ITS CONTAINER CAN BE PUSHED FORWARD FROM THE DOCK CONVEYOR ONTO A REAR-SECTION CONVEYOR WITHIN THE TRAILER.

BILL OF MATERIAL		
LUMBER	LINEAR FEET	BOARD FEET
2" X 3" *	20	10
2" X 4"	262	176
2" X 6"	166	166
4" X 4"	88	118
NAILS	NO. REQD	POUNDS
6d (2")	168	1
10d (3")	480	7-1/2
STEEL STRAPPING, 3/4" X .035"/.031" --- 10' REQD -----		1 LB
STEEL STRAPPING, 1-1/4" X .035"/.031" --- 33' REQD -----		5 LBS
SEAL FOR 3/4" STRAPPING -----	2 REQD	NIL
SEAL FOR 1-1/4" STRAPPING -----	2 REQD	NIL
PLYWOOD, 3/4" -----	81 SQ FT REQD	162 LBS
CROSS MEMBER -----	2 REQD	

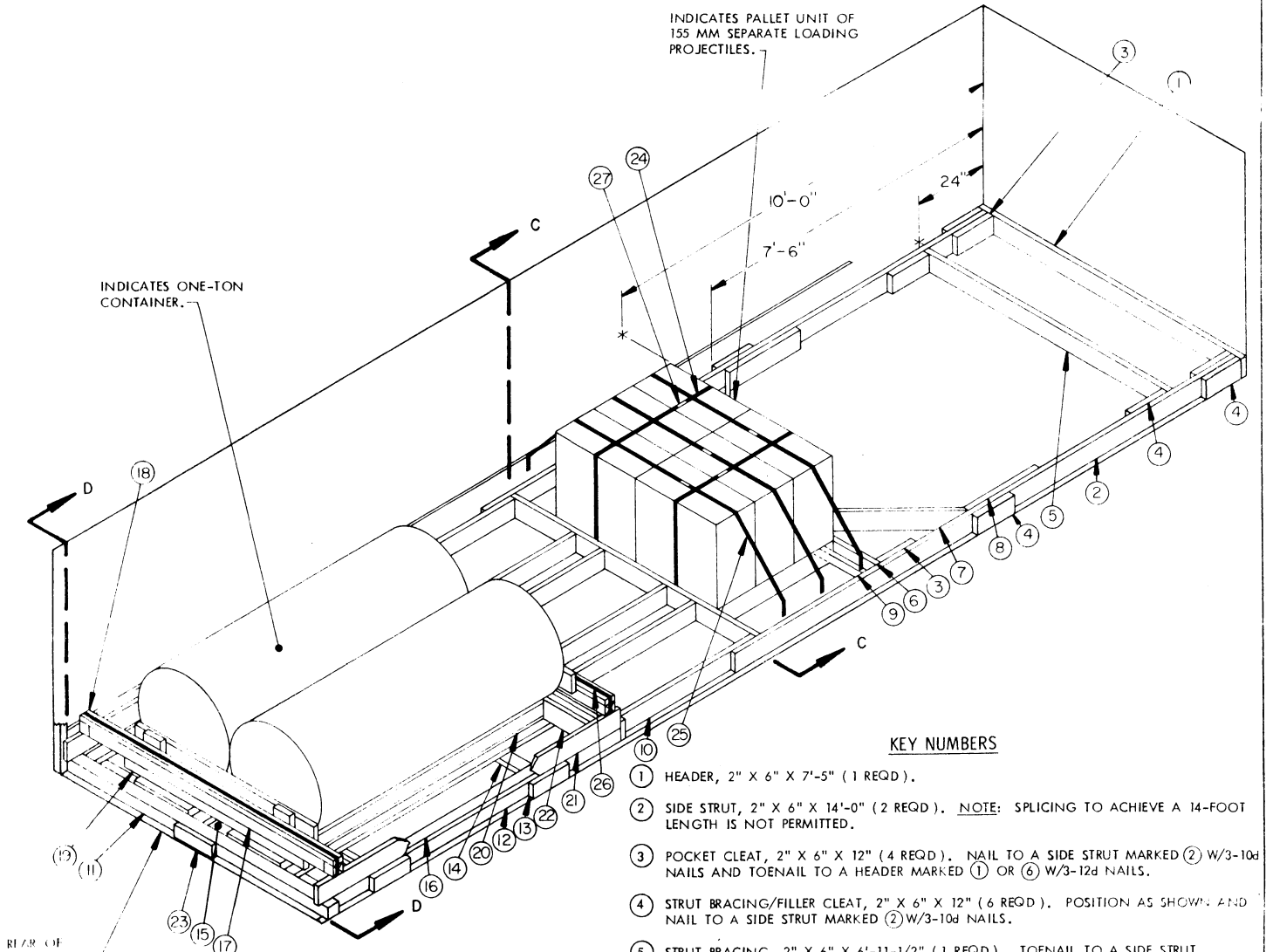
* TWO ACCEPTABLE WIDTH PIECES OF 2" X 3" MATERIAL CAN BE MADE BY RIPPING ONE PIECE OF 2" X 6" MATERIAL ON ITS CENTER LINE.

LOAD AS SHOWN

ITEM	QUANTITY	WEIGHT (APPROX)
ONE-TON CONTAINER - 6 -----		21,000 LBS (MAX)
DUNNAGE -----		1,117 LBS
TOTAL WEIGHT -----		22,117 LBS

INDICATES PALLET UNIT OF 155 MM SEPARATE LOADING PROJECTILES.

INDICATES ONE-TON CONTAINER.



ISOMETRIC VIEW

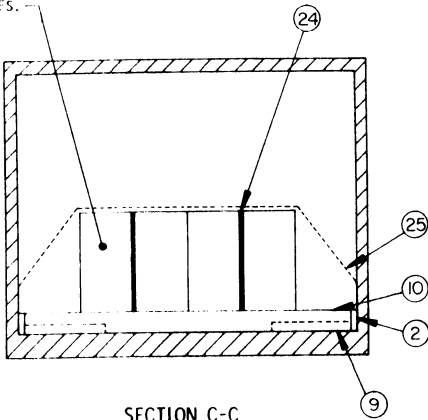
SEE THE DETAILS DEPICTED ON PAGE 12 FOR POSITIONING GUIDANCE APPLICABLE TO THE TWO 8-FOOT SECTIONS OF ROLLER CONVEYOR.

KEY NUMBERS

- ① HEADER, 2" X 6" X 7'-5" (1 REQD).
- ② SIDE STRUT, 2" X 6" X 14'-0" (2 REQD). NOTE: SPLICING TO ACHIEVE A 14-FOOT LENGTH IS NOT PERMITTED.
- ③ POCKET CLEAT, 2" X 6" X 12" (4 REQD). NAIL TO A SIDE STRUT MARKED ② W/3-10d NAILS AND TOENAIL TO A HEADER MARKED ① OR ⑥ W/3-12d NAILS.
- ④ STRUT BRACING/FILLER CLEAT, 2" X 6" X 12" (6 REQD). POSITION AS SHOWN AND NAIL TO A SIDE STRUT MARKED ② W/3-10d NAILS.
- ⑤ STRUT BRACING, 2" X 6" X 6'-11-1/2" (1 REQD). TOENAIL TO A SIDE STRUT MARKED ② W/3-12d NAILS AT EACH END.
- ⑥ HEADER ASSEMBLY (1 REQD). SEE THE "HEADER" DETAIL ON PAGE 11. POSITION IN FRONT OF PALLET UNITS AT A 10-FOOT DISTANCE FROM THE FRONT OF THE TRAILER AS DIMENSIONED.
- ⑦ DIAGONAL BRACE, 2" X 6" BY CUT-TO-FIT IN LENGTH (2 REQD). DOUBLE BEVEL EACH END WITH 45° CUTS. INSTALL AT A 45° ANGLE AS SHOWN AND TOENAIL TO THE ADJACENT HEADER MARKED ⑥ AND TO A SIDE STRUT MARKED ② W/2-16d NAILS AT EACH END.
- ⑧ SIDE CLEAT, 2" X 6" X 24" (2 REQD). POSITION AS SHOWN AND NAIL TO A SIDE STRUT MARKED ② W/8-10d NAILS.

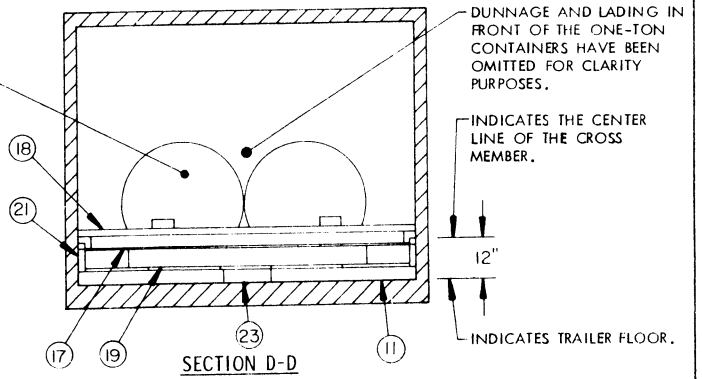
(KEY NUMBERS CONTINUED ON PAGE 7)

INDICATES PALLET UNITS OF 155 MM SEPARATE LOADING PROJECTILES.



SECTION C-C

INDICATES ONE-TON CONTAINER.



SECTION D-D

DUNNAGE AND LADING IN FRONT OF THE ONE-TON CONTAINERS HAVE BEEN OMITTED FOR CLARITY PURPOSES.

INDICATES THE CENTER LINE OF THE CROSS MEMBER.

12"

INDICATES TRAILER FLOOR.

SIX PALLET UNITS OF 155 MM SEPARATE LOADING PROJECTILES AND TWO ONE-TON CONTAINER LOAD

(KEY NUMBERS CONTINUED)

- 9 SIDE BLOCKING FOR PALLET, 2" X 3" BY CUT-TO-FIT IN LENGTH FOR A SNUG FIT BETWEEN A SIDE STRUT MARKED 2 AND A SKID ON A PALLET (4 REQ'D). NAIL TO THE HEADER MARKED 6 OR THE INTERMEDIATE BLOCKING MARKED 10 W/4-10d NAILS.
- 10 INTERMEDIATE BLOCKING (1 REQ'D). SEE THE "INTERMEDIATE BLOCKING ASSEMBLY B" DETAIL ON PAGE 11. NAIL TO THE SIDE STRUTS MARKED 2 W/3-10d NAILS AT EACH JOINT.
- 11 REAR BLOCKING, 4" X 4" X 7'-5" (1 REQ'D). POSITION IMMEDIATELY IN FRONT OF REAR CORNER POSTS OF THE TRAILER. NOTE: THIS PIECE MUST BE INSTALLED BEFORE THE TWO CONVEYOR SECTIONS ARE INSTALLED.
- 12 SIDE BUFFER PIECE, 2" X 4" X 8'-0" (2 REQ'D). POSITION ON EDGE AT SIDE OF TRAILER AS SHOWN, ALIGNED WITH THE CONVEYOR SECTIONS.
- 13 SIDE FILLER PIECE, 2" X 4" X 12" (4 REQ'D). POSITION BETWEEN A PIECE MARKED 12 AND THE SIDE WALL OF THE TRAILER AT A LOCATION SHOWN, TO PROVIDE LATERAL SUPPORT IN LINE WITH A PIECE MARKED 14. NAIL TO A PIECE MARKED 12 W/2-10d NAILS.
- 14 SIDE STRUT FOR CONVEYOR, 2" X 4" X 19" (4 REQ'D). POSITION A STRUT BETWEEN A PIECE MARKED 12 AND THE WEB OF A CONVEYOR SECTION SIDE RAIL. A STRUT IS TO BE LOCATED 6" TO 18" FROM THE END OF A CONVEYOR SECTION AND SO AS TO ALIGN WITH A PIECE MARKED 13.
- 15 CENTER STRUT FOR CONVEYOR, 2" X 4" X 15" (2 REQ'D). POSITION TO ALIGN WITH A SET OF TWO PIECES MARKED 14 AND BETWEEN THE WEBS OF THE SIDE RAILS ON THE CONVEYOR SECTIONS. NOTE: THE CENTER STRUTS SHOULD BE PLACED BETWEEN THE CONVEYOR SECTIONS BEFORE THE SIDE STRUTS MARKED 14 ARE INSTALLED. THEY CAN BE MOVED LONGITUDINALLY TO ALIGN WITH THE SIDE STRUTS AFTER THE SIDE STRUTS ARE PROPERLY LOCATED.
- 16 STRINGER, 2" X 4" X 8'-0" (6 REQ'D). POSITION WITH ONE EDGE AGAINST A SIDE BUFFER PIECE MARKED 12 OR ABOUT ONE INCH UNDER THE TOP FLANGE OF THE SIDE RAIL ON THE ADJACENT CONVEYOR SECTION, AS APPLICABLE. NAIL TO A SIDE STRUT MARKED 14 OR A CENTER STRUT MARKED 15 W/2-10d NAILS AT EACH JOINT. TOENAIL A PIECE THAT IS ADJACENT TO A SIDE BUFFER PIECE MARKED 12 TO THE PIECE MARKED 12 W/2-10d NAILS AT EACH OF TWO PLACES. TOENAILING WILL BE ACCOMPLISHED NEAR THE SAME AREAS WHERE THE STRINGER PIECE IS NAILED TO THE SIDE STRUTS.
- 17 CROSS MEMBER (2 REQ'D). INSTALL AT THE 12" HEIGHT AS SHOWN IN THE "SECTION D-D" VIEW OF PAGE 6. SEE THE "CROSS MEMBER SECUREMENT" DETAIL ON PAGE 11, WHICH APPLIES TO PIECES MARKED 17, 18, 24, AND 27. NOTE: THE FORWARD CROSS MEMBER WILL BE INSTALLED SO THAT THE TON-CONTAINER SIDE IS ABOUT 6" BEHIND THE FRONT END OF THE CONVEYOR SECTIONS.
- 18 STRAP RETAINER PIECE, 2" X 3" X 7'-0" (2 REQ'D).
- 19 LOAD BEARING GATE (2 REQ'D). SEE THE "LOAD-BEARING GATE B" DETAIL ON PAGE 11. POSITION SO THAT THE DOUBLED GATE HOLD DOWN PIECE OF THE GATE ASSEMBLY IS LOCATED DIRECTLY UNDER A CROSS MEMBER MARKED 17.
- 20 TON-CONTAINER CRADLE (2 REQ'D). SEE THE "CRADLE" DETAIL ON PAGE 10.
- 21 BUFFER PIECE, 2" X 6" X 8'-4-1/2" (2 REQ'D). BEFORE THE SIDE BLOCKING PIECES MARKED 22 ARE TOENAILED TO A BUFFER PIECE, A BUFFER PIECE WILL BE LONGITUDINALLY LOCATED SO THAT ITS REAR END OVERLAPS ONE-HALF OF A REAR CORNER POST OF THE TRAILER.

(CONTINUED AT RIGHT)

BILL OF MATERIAL		
LUMBER	LINEAR FEET	BOARD FEET
2" X 3" *	23	12
2" X 4"	80	54
2" X 6"	184	184
4" X 4"	35	47
NAILS	NO. REQ'D	POUNDS
6d (2")	56	1/2
10d (3")	251	4
12d (3-1/4")	18	1/2
16d (3-1/2")	8	1/4
PLYWOOD, 3/4" -----	27 SQ FT REQ'D	54 LBS
STEEL STRAPPING, 1-1/4" X .035"/.031"-107' REQ'D		15 LBS
SEALS FOR 1-1/4" STRAPPING	13 REQ'D	NIL
CROSS MEMBER -----	2 REQ'D	

* TWO ACCEPTABLE WIDTH PIECES OF 2" X 3" MATERIAL CAN BE MADE BY RIPPING ONE PIECE OF 2" X 6" MATERIAL ON ITS CENTER LINE.

SPECIAL NOTES:

- 1. THE LOAD SHOWN ON PAGE 6 DEPICTS A LOAD OF TWO ONE-TON CONTAINERS AND SIX PALLET UNITS OF 155MM SEPARATE LOADING PROJECTILES IN A 25'-11" LONG (INSIDE LENGTH) TRAILER. ALSO, THE TRAILER IS EQUIPPED WITH TWO 8-FOOT SECTIONS OF ROLLER CONVEYOR AND A MECHANICAL CARGO RESTRAINT SYSTEM.
- 2. PIECES MARKED 1 THROUGH 8 SHOULD BE INSTALLED IN THE TRAILER PRIOR TO THE PLACEMENT OF ANY PALLET UNITS INTO THE TRAILER. ALL DUNNAGE SPECIFIED FOR INSTALLATION FORWARD OF THE CONVEYOR SECTIONS, THE CONVEYOR BLOCKING DUNNAGE AND THE FORWARD CROSS MEMBER MARKED 17 AND THE FORWARD LOAD-BEARING GATE MARKED 19 SHOULD BE INSTALLED BEFORE PLACING THE TON-CONTAINERS INTO THE TRAILER.
- 3. A HAND TRUCK OR A COMBINATION OF A HAND TRUCK AND A FORKLIFT TRUCK CAN BE USED EFFECTIVELY FOR LOADING AND UNLOADING THE PALLET UNITS OF PROJECTILES.
- 4. THE TWO ONE-TON CONTAINERS MUST BE POSITIONED WITHIN A LOAD SO THAT THEY CONTACT EACH OTHER ALONG THEIR SIDE WALLS OR ARE WITHIN 1/4 INCH OF BEING IN CONTACT. THIS REQUIREMENT IS NECESSARY TO ENSURE EFFECTIVE SIDE BLOCKING FROM THE DUNNAGE INSTALLED FOR THAT PURPOSE.
- 5. WHEN LOADING THE TON-CONTAINERS AND APPROVED AND PROPERLY SIZED CRANE-TYPE MATERIALS HANDLING EQUIPMENT IS AVAILABLE FOR USE, A CONTAINER CAN BE LIFTED AND SET DOWN ON A CRADLE ASSEMBLY WHICH HAS BEEN PRE-POSITIONED ON ONE OF THE CONVEYOR SECTIONS AT THE REAR OF THE TRAILER. IF LOADING IS ACCOMPLISHED AT A FIXED OR PORTABLE LOADING DOCK FACILITY AND CRANE-TYPE EQUIPMENT IS NOT TO BE USED TO LOAD A CONTAINER DIRECTLY INTO THE TRAILER, ONE ADDITIONAL SECTION OF ROLLER CONVEYOR CAN BE ADVANTAGEOUSLY USED DURING LOADING OPERATIONS. THE ADDITIONAL CONVEYOR SECTION CAN BE PLACED ON THE DOCK IN ALIGNMENT WITH A CONVEYOR WITHIN THE TRAILER. AFTER A CRADLE AND A CONTAINER ARE PLACED ONTO THE EXTRA CONVEYOR SECTION BY USING APPROPRIATE HANDLING EQUIPMENT, THE CRADLE WITH ITS CONTAINER CAN BE PUSHED FORWARD FROM THE DOCK CONVEYOR ONTO A CONVEYOR SECTION WITHIN THE TRAILER.

(KEY NUMBERS CONTINUED FROM LEFT)

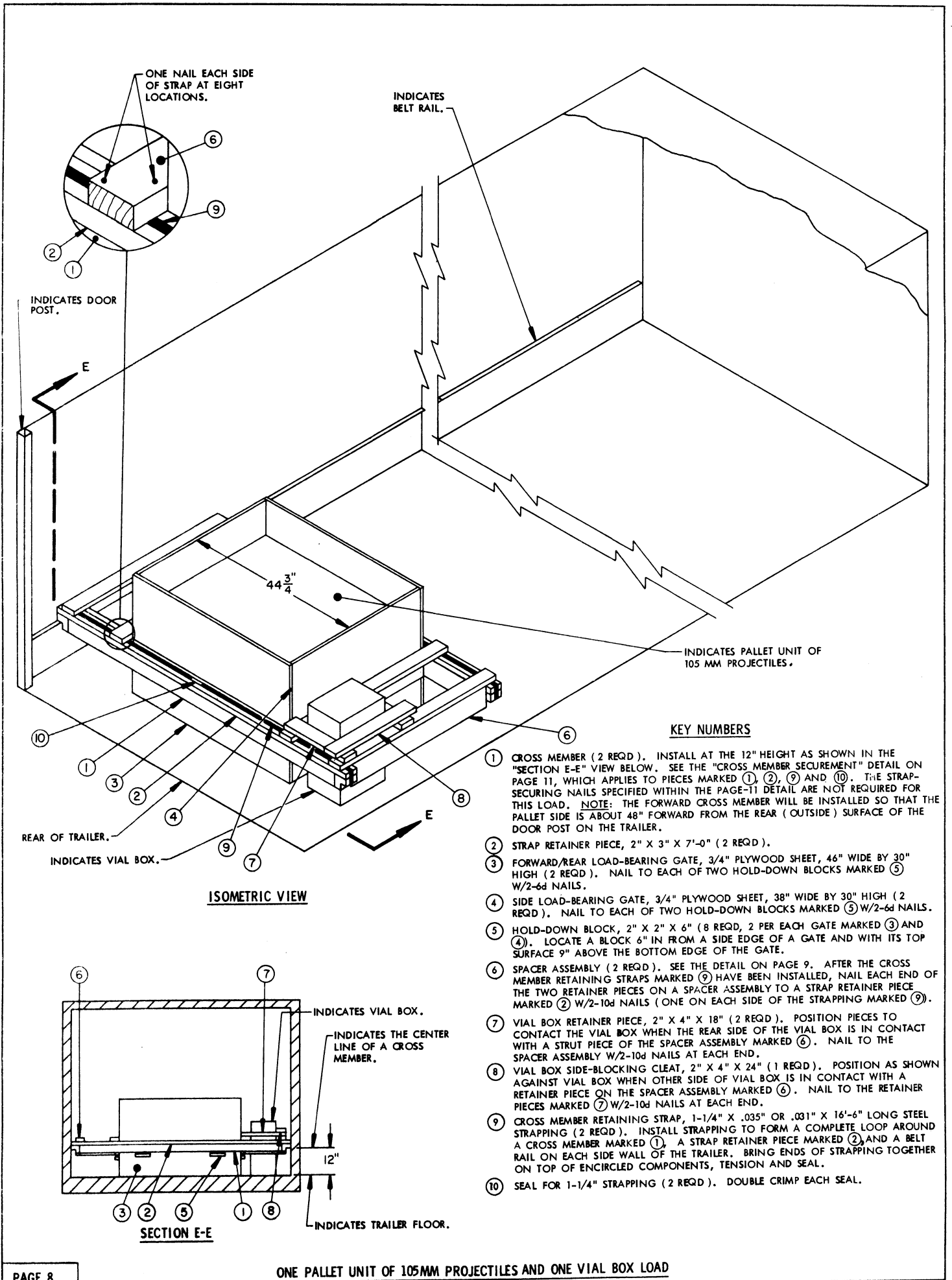
- 22 SIDE BLOCKING, 2" X 6" MATERIAL CUT TO A LENGTH FOR A TIGHT FIT BETWEEN A BUFFER PIECE MARKED 12 AND A 4" X 4" MEMBER OF A TON-CONTAINER CRADLE MARKED AS PIECE 20 (DOUBLED) (4 REQ'D). NAIL THE FIRST PIECE TO A LOAD-BEARING GATE MARKED 19 W/5-10d NAILS AND NAIL THE SECOND PIECE TO THE FIRST W/5-10d NAILS. TOENAIL TO THE ADJACENT BUFFER PIECE W/2-10d NAILS.
- 23 REAR FILLER PIECE, 2" X 4" X 12" (1 REQ'D). CENTER ON LENGTH OF REAR BLOCKING PIECE MARKED 11 AS SHOWN AND NAIL TO PIECE MARKED 11 W/2-10d NAILS.
- 24 BUNDLING STRAP, 1-1/4" X .035" OR .031" X 13'-0" LONG STEEL STRAPPING (2 REQ'D). PRE-POSITION NEAR THE LATERAL LOCATION SHOWN BEFORE THE FIRST OF PALLETS TO BE STRAPPED TOGETHER IS LOADED AGAINST THE HEADER MARKED 6.
- 25 HOLD-DOWN STRAP, 1-1/4" X .035" OR .031" X 16'-0" LONG STEEL STRAPPING (3 REQ'D). INSTALL EACH STRAP FROM TWO 8-FOOT LONG PIECES. ATTACH ONE END OF AN 8-FOOT PIECE TO THE 8" HIGH RUB RAIL AT THE SIDE OF THE TRAILER. RUN THE STRAP BEHIND THE 12" HIGH BELT RAIL AND UP TO MEET ANOTHER 8-FOOT PIECE AT THE TOP OF THE PALLETS WHERE THE TWO 8-FOOT PIECES CAN BE TENSIONED AND SEALED.
- 26 CROSS MEMBER RETAINING STRAP, 1-1/4" X .035" OR .031" X 16'-6" LONG STEEL STRAPPING (2 REQ'D). INSTALL STRAPPING TO FORM A COMPLETE LOOP AROUND A CROSS MEMBER MARKED 17, A STRAP RETAINER PIECE MARKED 18 AND A BELT RAIL ON EACH SIDE WALL OF THE TRAILER. BRING ENDS OF STRAPPING TOGETHER ON TOP OF ENCIRCLED COMPONENTS, TENSION AND SEAL. SECURE STRAPPING NEAR EACH END OF THE STRAP RETAINER PIECE MARKED 18 WITH TWO PARTIALLY DRIVEN 10d NAILS (ONE ON EACH SIDE OF STRAPPING). BEND A SET OF TWO NAILS OVER AND ACROSS THE STRAPPING TO SECURE IT.
- 27 SEAL FOR 1-1/4" STRAPPING (13 REQ'D; 1 PER BUNDLING STRAP, 3 PER HOLD-DOWN STRAP AND 1 PER CROSS MEMBER RETAINING STRAP). DOUBLE CRIMP EACH SEAL.

LOAD AS SHOWN

ITEM	QUANTITY	WEIGHT (APPROX)
155MM SLP PALLET UNIT - 6 -----		4,800 LBS
ONE-TON CONTAINER -- 2 -----		7,000 LBS (MAX)
DUNNAGE -----		668 LBS

TOTAL WEIGHT 12,468 LBS

SIX PALLET UNITS OF 155MM SEPARATE LOADING PROJECTILES AND TWO ONE-TON CONTAINER LOAD



ONE NAIL EACH SIDE OF STRAP AT EIGHT LOCATIONS.

INDICATES BELT RAIL.

INDICATES DOOR POST.

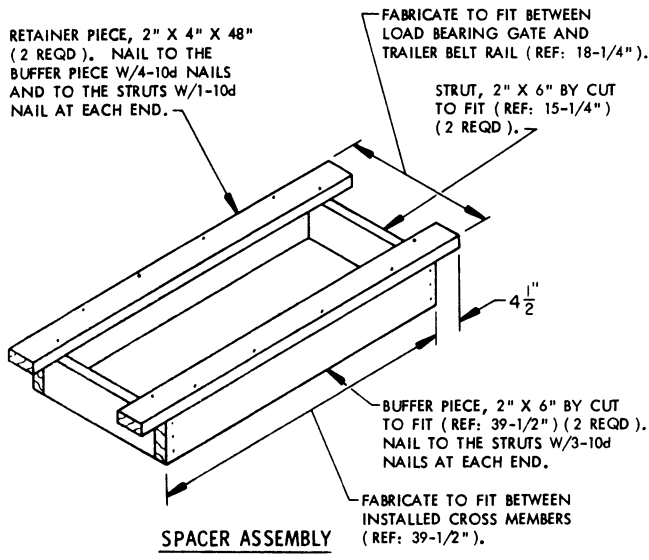
INDICATES PALLET UNIT OF 105 MM PROJECTILES.

KEY NUMBERS

- ① CROSS MEMBER (2 REQD.). INSTALL AT THE 12" HEIGHT AS SHOWN IN THE "SECTION E-E" VIEW BELOW. SEE THE "CROSS MEMBER SECUREMENT" DETAIL ON PAGE 11, WHICH APPLIES TO PIECES MARKED ①, ②, ⑨ AND ⑩. THE STRAP-SECURING NAILS SPECIFIED WITHIN THE PAGE-11 DETAIL ARE NOT REQUIRED FOR THIS LOAD. NOTE: THE FORWARD CROSS MEMBER WILL BE INSTALLED SO THAT THE PALLET SIDE IS ABOUT 48" FORWARD FROM THE REAR (OUTSIDE) SURFACE OF THE DOOR POST ON THE TRAILER.
- ② STRAP RETAINER PIECE, 2" X 3" X 7'-0" (2 REQD.).
- ③ FORWARD/REAR LOAD-BEARING GATE, 3/4" PLYWOOD SHEET, 46" WIDE BY 30" HIGH (2 REQD.). NAIL TO EACH OF TWO HOLD-DOWN BLOCKS MARKED ⑤ W/2-6d NAILS.
- ④ SIDE LOAD-BEARING GATE, 3/4" PLYWOOD SHEET, 38" WIDE BY 30" HIGH (2 REQD.). NAIL TO EACH OF TWO HOLD-DOWN BLOCKS MARKED ⑤ W/2-6d NAILS.
- ⑤ HOLD-DOWN BLOCK, 2" X 2" X 6" (8 REQD., 2 PER EACH GATE MARKED ③ AND ④). LOCATE A BLOCK 6" IN FROM A SIDE EDGE OF A GATE AND WITH ITS TOP SURFACE 9" ABOVE THE BOTTOM EDGE OF THE GATE.
- ⑥ SPACER ASSEMBLY (2 REQD.). SEE THE DETAIL ON PAGE 9. AFTER THE CROSS MEMBER RETAINING STRAPS MARKED ⑨ HAVE BEEN INSTALLED, NAIL EACH END OF THE TWO RETAINER PIECES ON A SPACER ASSEMBLY TO A STRAP RETAINER PIECE MARKED ② W/2-10d NAILS (ONE ON EACH SIDE OF THE STRAPPING MARKED ⑨).
- ⑦ VIAL BOX RETAINER PIECE, 2" X 4" X 18" (2 REQD.). POSITION PIECES TO CONTACT THE VIAL BOX WHEN THE REAR SIDE OF THE VIAL BOX IS IN CONTACT WITH A STRUT PIECE OF THE SPACER ASSEMBLY MARKED ⑥. NAIL TO THE SPACER ASSEMBLY W/2-10d NAILS AT EACH END.
- ⑧ VIAL BOX SIDE-BLOCKING CLEAT, 2" X 4" X 24" (1 REQD.). POSITION AS SHOWN AGAINST VIAL BOX WHEN OTHER SIDE OF VIAL BOX IS IN CONTACT WITH A RETAINER PIECE ON THE SPACER ASSEMBLY MARKED ⑥. NAIL TO THE RETAINER PIECES MARKED ⑦ W/2-10d NAILS AT EACH END.
- ⑨ CROSS MEMBER RETAINING STRAP, 1-1/4" X .035" OR .031" X 16'-6" LONG STEEL STRAPPING (2 REQD.). INSTALL STRAPPING TO FORM A COMPLETE LOOP AROUND A CROSS MEMBER MARKED ①, A STRAP RETAINER PIECE MARKED ②, AND A BELT RAIL ON EACH SIDE WALL OF THE TRAILER. BRING ENDS OF STRAPPING TOGETHER ON TOP OF ENCIRCLED COMPONENTS, TENSION AND SEAL.
- ⑩ SEAL FOR 1-1/4" STRAPPING (2 REQD.). DOUBLE CRIMP EACH SEAL.

ISOMETRIC VIEW

SECTION E-E



SPECIAL NOTES:

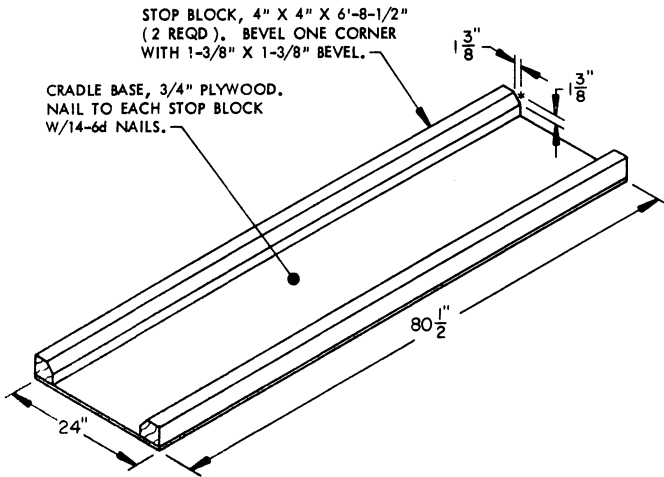
1. THE LOAD SHOWN ON PAGE 8 DEPICTS A LOAD OF ONE PALLET UNIT OF 105MM PROJECTILES AND ONE VIAL BOX IN A 25'-11" LONG (INSIDE LENGTH) TRAILER. ALSO, THE TRAILER IS EQUIPPED WITH A MECHANICAL CARGO RESTRAINT SYSTEM.
2. ONE SET OF PIECES MARKED ①, ②, ⑨ AND ⑩ AND ONE GATE ASSEMBLY CONSISTING OF PIECES MARKED ③ AND ⑤ SHOULD BE INSTALLED PRIOR TO THE PLACEMENT OF THE PALLET UNIT INTO THE TRAILER. AFTER THE PALLET UNIT IS LOADED, THE VIAL BOX SHOULD BE PLACED INTO THE TRAILER NEAR ITS SHIPPING LOCATION, PRIOR TO INSTALLING THE REMAINING DUNNAGE COMPONENTS.
3. THE VIAL BOX CAN BE LOADED MANUALLY. HOWEVER, AN APPROVED, APPROPRIATELY SIZED PALLET TRUCK AND/OR FORKLIFT TRUCK IS REQUIRED FOR LOADING THE PALLET UNIT INTO THE TRAILER.

BILL OF MATERIAL		
LUMBER	LINEAR FEET	BOARD FEET
2" X 2"	4	2
2" X 3" *	14	7
2" X 4"	21	14
2" X 6"	20	20
NAILS	NO. REQD	POUNDS
6d (2")	16	NIL
10d (3")	84	1-1/4
PLYWOOD, 3/4" ----- 35 SQ FT REQD ----- 70 LBS		
STEEL STRAPPING, 1-1/4" X .035"/.031" - 33' REQD ----- 4 LBS		
SEAL FOR 1-1/4" STRAPPING ----- 2 REQD ----- NIL		
CROSS MEMBER ----- 2 REQD		

* TWO ACCEPTABLE WIDTH PIECES OF 2" X 3" MATERIAL CAN BE MADE BY RIPPING ONE PIECE OF 2" X 6" MATERIAL ON ITS CENTER LINE.

LOAD AS SHOWN

ITEM	QUANTITY	WEIGHT (APPROX)
PALLET UNIT, 105MM	1	3,888 LBS
VIAL BOX	1	55 LBS
DUNNAGE		161 LBS
TOTAL WEIGHT		4,104 LBS

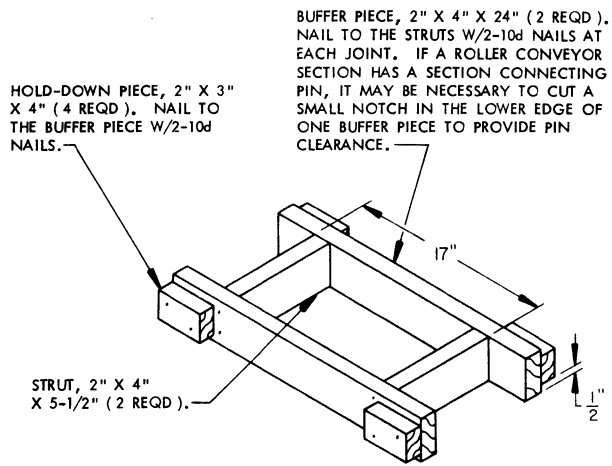


STOP BLOCK, 4" X 4" X 6'-8-1/2"
(2 REQD). BEVEL ONE CORNER
WITH 1-3/8" X 1-3/8" BEVEL.

CRADLE BASE, 3/4" PLYWOOD.
NAIL TO EACH STOP BLOCK
W/14-6d NAILS.

CRADLE

(6 ASSEMBLIES REQUIRED FOR LOAD
SHOWN ON PAGE 4 AND 2 REQUIRED
FOR LOAD SHOWN ON PAGE 6)



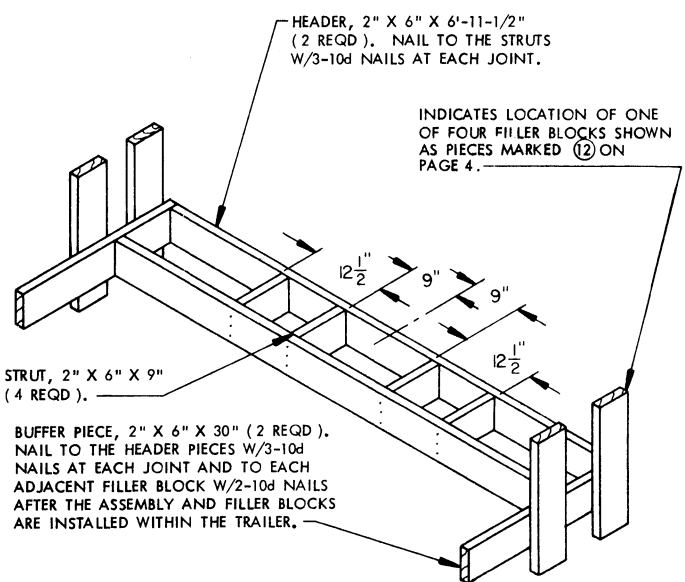
BUFFER PIECE, 2" X 4" X 24" (2 REQD).
NAIL TO THE STRUTS W/2-10d NAILS AT
EACH JOINT. IF A ROLLER CONVEYOR
SECTION HAS A SECTION CONNECTING
PIN, IT MAY BE NECESSARY TO CUT A
SMALL NOTCH IN THE LOWER EDGE OF
ONE BUFFER PIECE TO PROVIDE PIN
CLEARANCE.

HOLD-DOWN PIECE, 2" X 3"
X 4" (4 REQD). NAIL TO
THE BUFFER PIECE W/2-10d
NAILS.

STRUT, 2" X 4"
X 5-1/2" (2 REQD).

CONVEYOR SPACER

(4 ASSEMBLIES REQUIRED FOR LOAD
SHOWN ON PAGE 4)



HEADER, 2" X 6" X 6'-11-1/2"
(2 REQD). NAIL TO THE STRUTS
W/3-10d NAILS AT EACH JOINT.

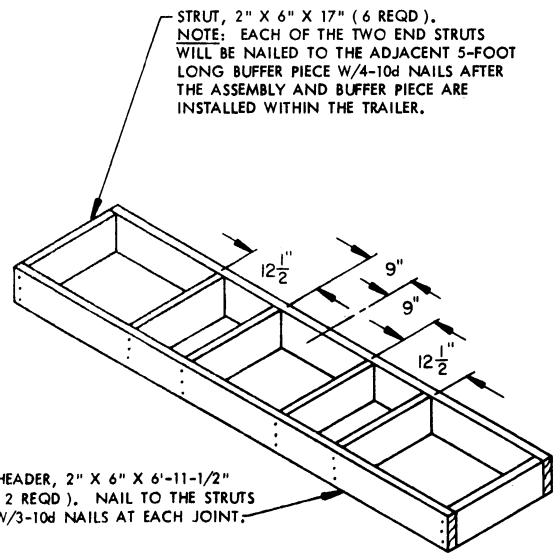
INDICATES LOCATION OF ONE
OF FOUR FILLER BLOCKS SHOWN
AS PIECES MARKED (2) ON
PAGE 4.

STRUT, 2" X 6" X 9"
(4 REQD).

BUFFER PIECE, 2" X 6" X 30" (2 REQD).
NAIL TO THE HEADER PIECES W/3-10d
NAILS AT EACH JOINT AND TO EACH
ADJACENT FILLER BLOCK W/2-10d NAILS
AFTER THE ASSEMBLY AND FILLER BLOCKS
ARE INSTALLED WITHIN THE TRAILER.

FORWARD BLOCKING ASSEMBLY

(1 ASSEMBLY REQUIRED FOR LOAD
SHOWN ON PAGE 4)



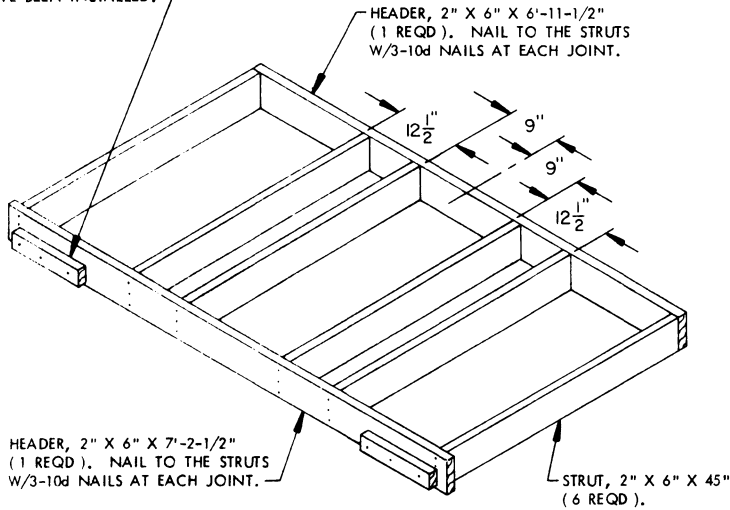
STRUT, 2" X 6" X 17" (6 REQD).
NOTE: EACH OF THE TWO END STRUTS
WILL BE NAILED TO THE ADJACENT 5-FOOT
LONG BUFFER PIECE W/4-10d NAILS AFTER
THE ASSEMBLY AND BUFFER PIECE ARE
INSTALLED WITHIN THE TRAILER.

HEADER, 2" X 6" X 6'-11-1/2"
(2 REQD). NAIL TO THE STRUTS
W/3-10d NAILS AT EACH JOINT.

INTERMEDIATE BLOCKING ASSEMBLY A

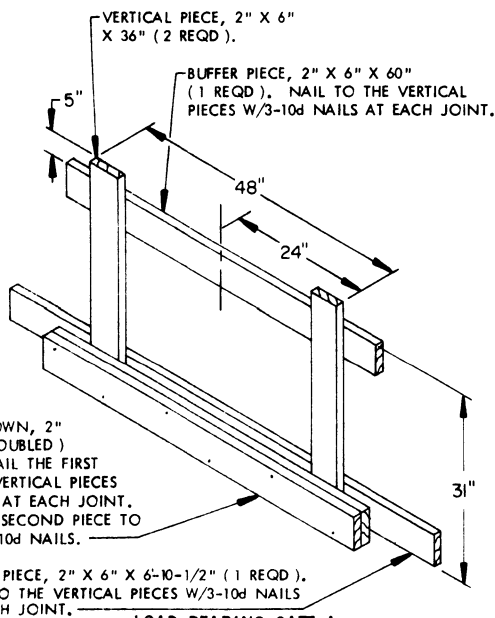
(2 ASSEMBLIES REQUIRED FOR LOAD SHOWN ON PAGE 4)

HOLD-DOWN BLOCK, 2" X 3" X 12" (2 REQD).
 INSTALL TO EXTEND INTO THE SIDE RAIL (CHANNEL)
 OF THE CONVEYOR. NAIL TO THE HEADER W/3-10d
 NAILS. HOWEVER, A HOLD-DOWN BLOCK IS NOT
 TO BE NAILED IN PLACE UNTIL AFTER THE REMAINDER
 OF THE ASSEMBLY IS INSTALLED WITHIN THE TRAILER
 AND THE CENTER AND SIDE STRUTS WHICH LOCATE
 AND LATERALLY BLOCK THE CONVEYOR SECTIONS
 HAVE BEEN INSTALLED.



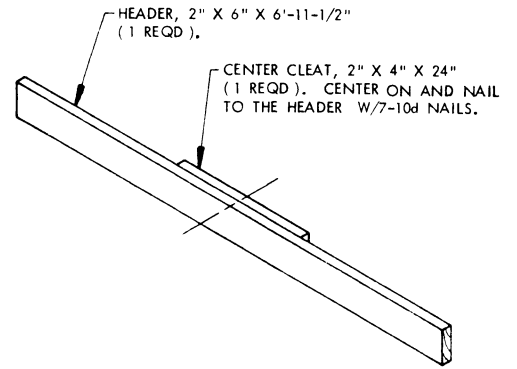
INTERMEDIATE BLOCKING ASSEMBLY B

(1 ASSEMBLY REQUIRED FOR LOAD SHOWN ON
 PAGE 6.) SEE SPECIAL NOTE 2 ON PAGE 7.



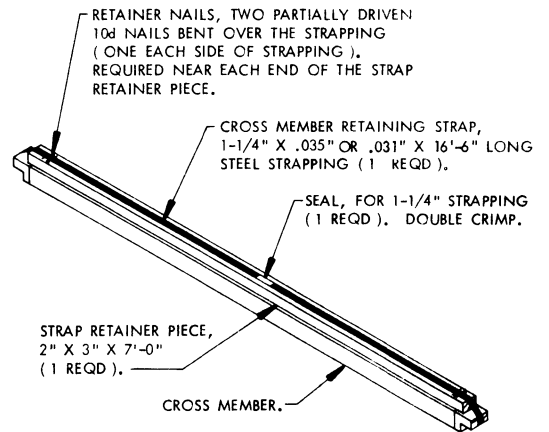
LOAD-BEARING GATE A

(1 ASSEMBLY REQUIRED FOR LOAD
 SHOWN ON PAGE 4)



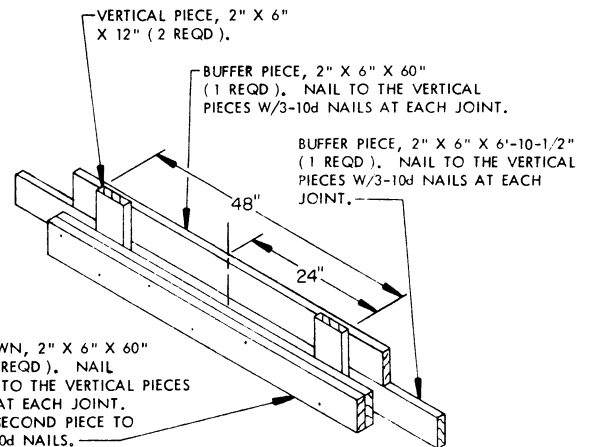
HEADER

(1 ASSEMBLY REQUIRED FOR
 LOAD SHOWN ON PAGE 6)



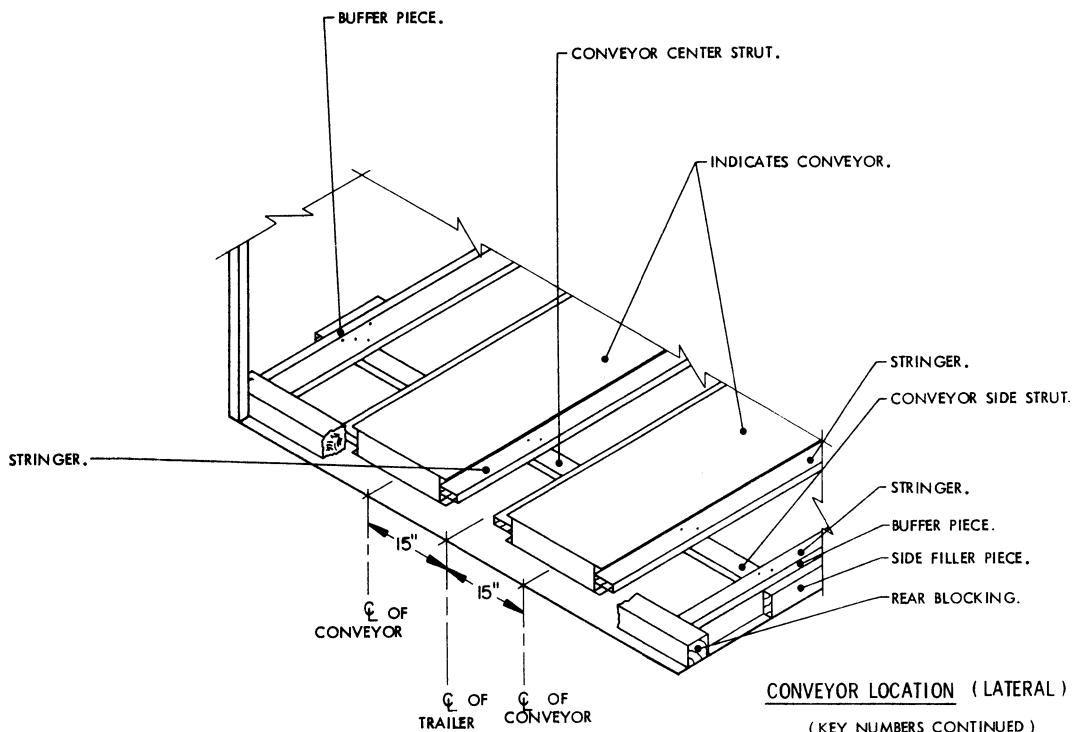
CROSS MEMBER SECUREMENT

(2 ASSEMBLIES REQUIRED FOR EACH
 OF THE LOADS SHOWN)



LOAD-BEARING GATE B

(2 ASSEMBLIES REQUIRED FOR
 LOAD SHOWN ON PAGE 6)



CONVEYOR LOCATION (LATERAL)
(KEY NUMBERS CONTINUED)

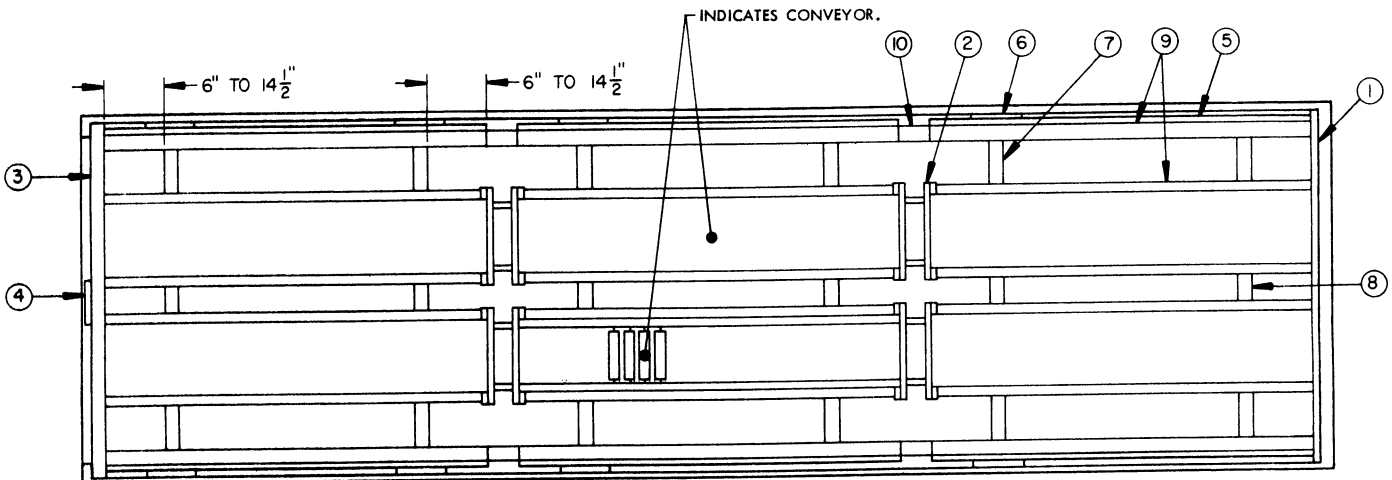
KEY NUMBERS

(① THRU ⑩ FOR LOAD SHOWN ON PAGE 4).

- ① FRONT BLOCKING, 2" X 4" X 7'-5" (1 REQD). POSITION ON EDGE ACROSS THE FRONT OF THE TRAILER BEFORE THE TWO FORWARD CONVEYOR SECTIONS ARE INSTALLED.
- ② CONVEYOR SPACER ASSEMBLY (4 REQD). SEE THE "CONVEYOR SPACER" DETAIL ON PAGE 10.
- ③ REAR BLOCKING, 4" X 4" X 7'-5" (1 REQD). POSITION IMMEDIATELY IN FRONT OF REAR CORNER POSTS OF THE TRAILER. **NOTE:** THIS PIECE MUST BE INSTALLED BEFORE THE TWO REAR SECTIONS OF ROLLER CONVEYOR ARE INSTALLED.
- ④ REAR FILLER PIECE, 2" X 4" X 12" (1 REQD). CENTER ON LENGTH OF PIECE MARKED ③, AS SHOWN, AND NAIL TO PIECE MARKED ③ W/2-10d NAILS.
- ⑤ SIDE BUFFER PIECE, 2" X 4" X 8'-0" (6 REQD). POSITION ON EDGE AT SIDE OF TRAILER AS SHOWN (3 EACH SIDE ALIGNED WITH THE CONVEYOR SECTIONS).
- ⑥ SIDE FILLER PIECE, 2" X 4" X 12" (8 REQD). POSITION BETWEEN A PIECE MARKED ⑤ AND THE SIDE WALL OF THE TRAILER AT A LOCATION SHOWN, TO PROVIDE LATERAL SUPPORT IN LINE WITH A PIECE MARKED ⑦. NAIL TO A PIECE MARKED ⑤ W/2-10d NAILS.
- ⑦ SIDE STRUT FOR CONVEYOR, 2" X 4" X 19" (12 REQD). POSITION A STRUT BETWEEN A PIECE MARKED ⑤ AND THE WEB OF A CONVEYOR SECTION SIDE RAIL. A STRUT IS TO BE LOCATED 6" TO 18" FROM THE END OF A CONVEYOR SECTION, SO AS TO ALIGN WITH A SIDE WALL POST OF THE TRAILER OR A PIECE MARKED ⑥.

(CONTINUED AT RIGHT)

- ⑧ CENTER STRUT FOR CONVEYOR, 2" X 4" X 15" (6 REQD). POSITION TO ALIGN WITH A SET OF TWO PIECES MARKED ⑦ AND BETWEEN THE WEBS OF THE SIDE RAILS ON TWO LATERALLY ADJACENT CONVEYOR SECTIONS. **NOTE:** TWO CENTER STRUTS SHOULD BE PLACED BETWEEN TWO LATERALLY ADJACENT CONVEYOR SECTIONS BEFORE THE SIDE STRUTS FOR THOSE SECTIONS ARE INSTALLED. THEY CAN BE MOVED LONGITUDINALLY TO ALIGN WITH THE SIDE STRUTS AFTER THE SIDE STRUTS ARE PROPERLY LOCATED.
- ⑨ STRINGER, 2" X 4" X 8'-0" (BASIC LENGTH) (18 REQD: 6, 8'-0" LONG PIECES FOR USE ALONG THE SIDE WALLS OF THE TRAILER; 8, 7'-10" LONG PIECES FOR USE ADJACENT TO THE TWO FRONT AND THE TWO REAR CONVEYOR SECTIONS; 4, 7'-8" LONG PIECES FOR USE ADJACENT TO THE TWO MIDDLE CONVEYOR SECTIONS). THE PIECES ALONG THE SIDE WALLS WILL BE POSITIONED AGAINST THE SIDE BUFFER PIECES MARKED ⑤ AND SO THAT A FRONT PIECE IS IN CONTACT WITH THE FRONT BLOCKING PIECE MARKED ① AND A REAR PIECE IS IN CONTACT WITH THE REAR BLOCKING PIECE MARKED ③. A CENTER PIECE WILL BE APPROXIMATELY CENTERED LONGITUDINALLY BETWEEN THE END PIECES. THESE 8-FOOT LONG SIDE PIECES WILL BE NAILED TO THE SIDE STRUTS MARKED ⑦ W/2-10d NAILS AT EACH JOINT AND TOENAILED TO THE PIECES MARKED ⑤ W/2-10d NAILS AT EACH OF TWO PLACES. TOENAILING WILL BE ACCOMPLISHED NEAR THE SAME AREAS WHERE THE PIECES ARE NAILED TO THE SIDE STRUTS. ALSO, AN END OF THESE PIECES, AS APPLICABLE, WILL BE NAILED TO A STRINGER TIE PIECE MARKED ⑩ W/3-10d NAILS. THE PIECES ADJACENT TO THE CONVEYOR SECTIONS WILL BE POSITIONED SO THAT ONE EDGE OF EACH PIECE EXTENDS ABOUT ONE INCH UNDER THE TOP FLANGE OF A SIDE RAIL ON A CONVEYOR SECTION. THESE PIECES WILL BE NAILED TO THE SIDE STRUTS MARKED ⑦ OR TO THE CENTER STRUTS MARKED ⑧ W/2-10d NAILS PER JOINT.
- ⑩ STRINGER TIE PIECE, 2" X 4" X 24" (4 REQD). POSITION AS SHOWN, UNDER AND AT A JOINT BETWEEN THE 8-FOOT LONG STRINGER PIECES MARKED ⑨ WHICH ARE ALONG THE SIDE WALLS OF THE TRAILER.



PLAN OF FLOOR DUNNAGE INSTALLATION