

# STORAGE IN 60' AND 80' IGLOO AND 80' STRADLEY MAGAZINES OF BLU-27 AND BLU-32 FIRE BOMB SERIES PACKED IN OPEN WOODEN CRATES

## INDEX

<u>ITEM</u>	<u>PAGE(S)</u>
GENERAL NOTES -----	3
IGLOO STORAGE PROCEDURES -----	2,3
STRADLEY STORAGE PROCEDURES -----	4,5
DETAILS -----	6

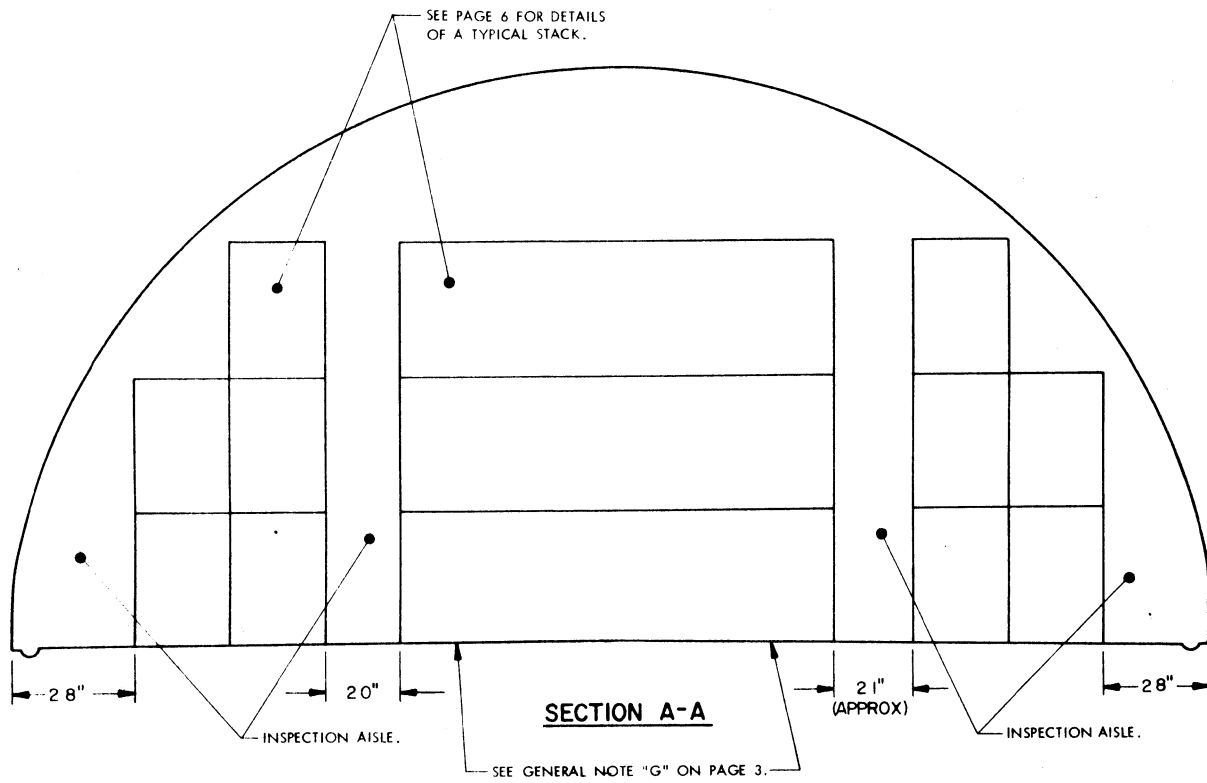
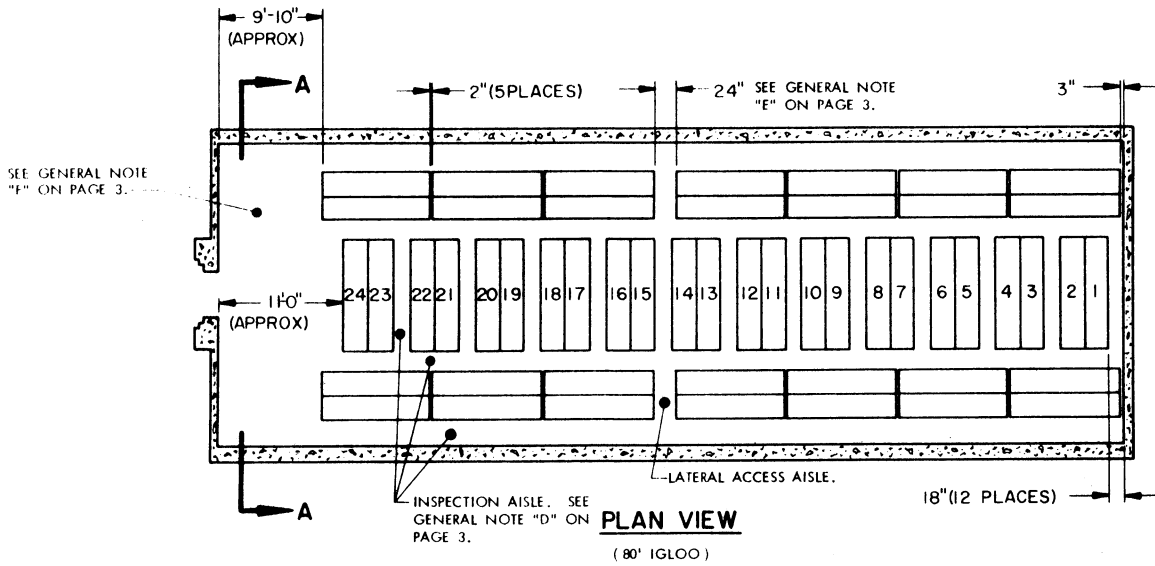
DRAFTER <b>M.J.P.</b>	PROJ ENG <b>DIW/RK</b>	ADSA <b>PJS</b>	SUBMITTED <i>W.S. Harding Col.</i>
CHECKER <i>RJK</i>	SEC. APPROV. <i>RJK</i>		COORDINATING OFFICER, SAVANNA ARMY DEPOT
REVISIONS			EXAMINED AND APPROVED <i>Ralph Kelly</i>
			AMMUNITION PROCUREMENT & SUPPLY AGENCY
			APPROVED BY CHIEF OF COMBATING GENERAL U. S. ARMY MATERIEL COMMAND
			<i>Paul [Signature]</i>
			U. S. ARMY MATERIEL COMMAND
			FEBRUARY 1969
			CLASS DIVISION DRAWING FILE
			19 48 4554 CBI-4M2

DO NOT SCALE

**STORAGE AS SHOWN**

**80' IGLOO**

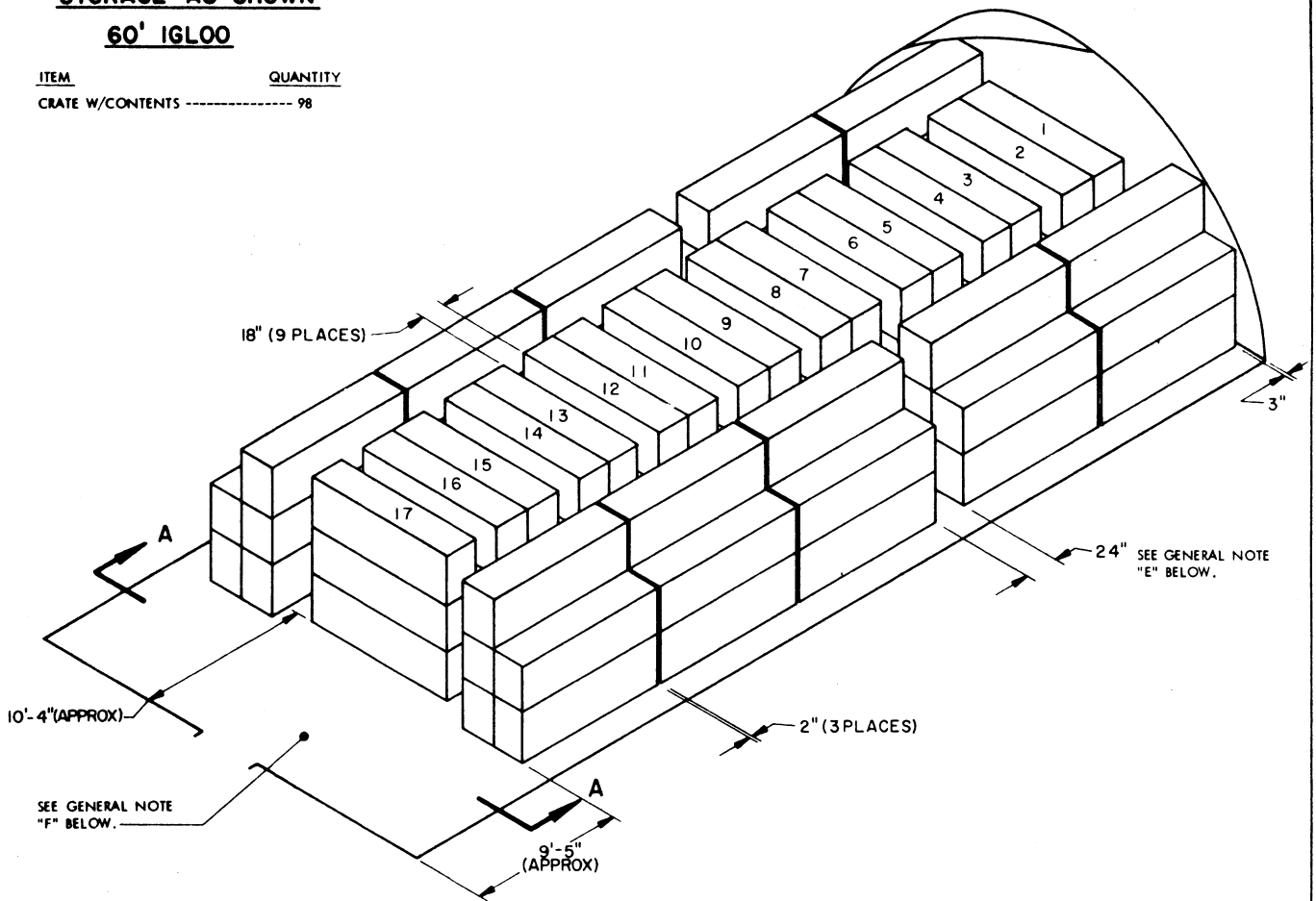
ITEM \_\_\_\_\_ QUANTITY \_\_\_\_\_  
CRATE W/CONTENTS ----- 142



**STORAGE AS SHOWN**

**60' IGLOO**

ITEM QUANTITY  
 CRATE W/CONTENTS ----- 98

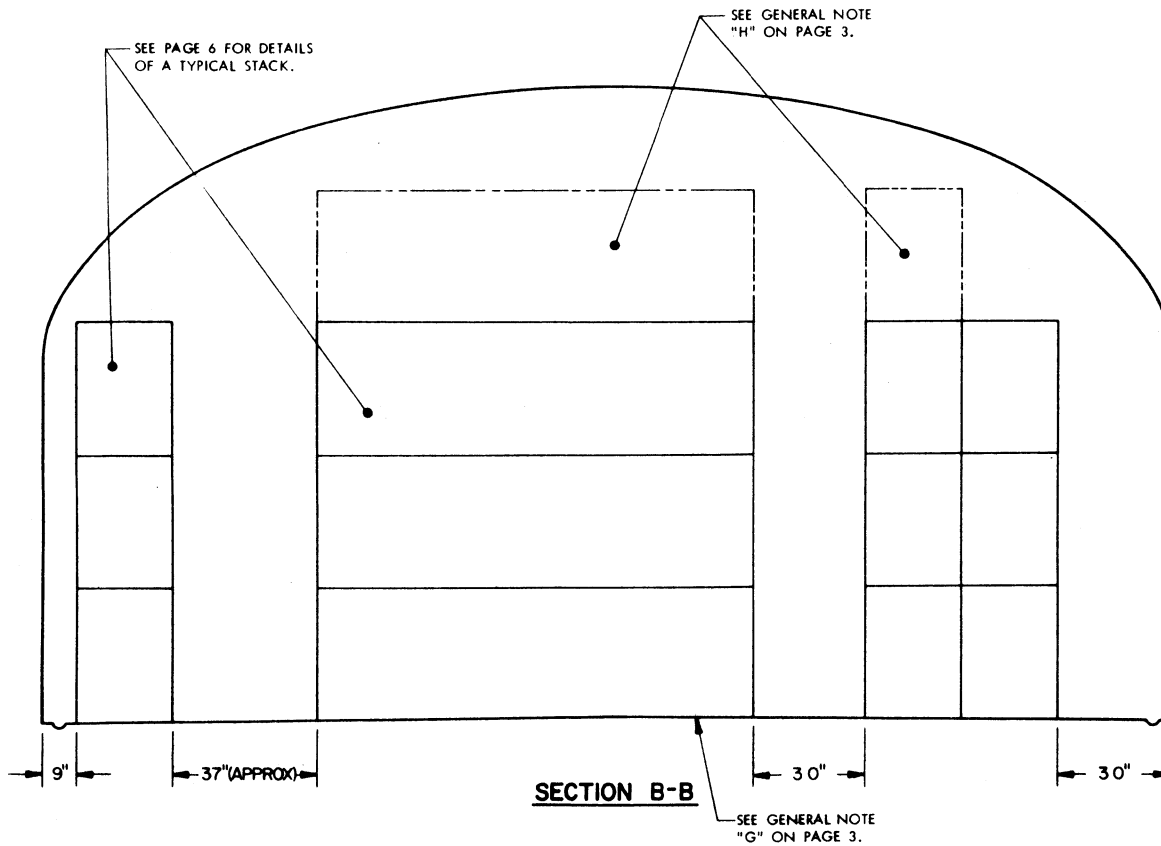
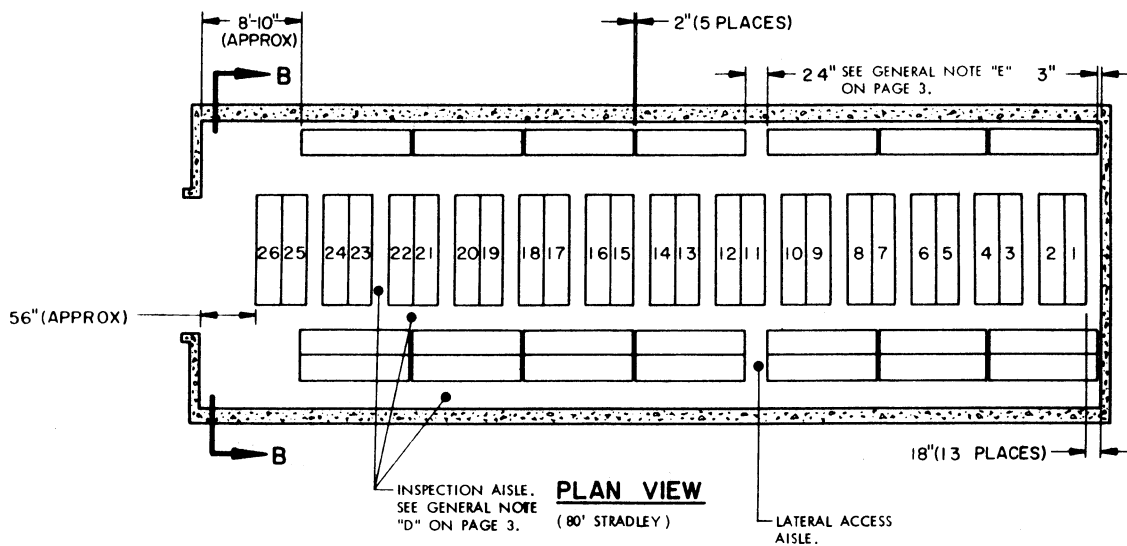


**ISOMETRIC VIEW**

(60' IGLOO)

**GENERAL NOTES**

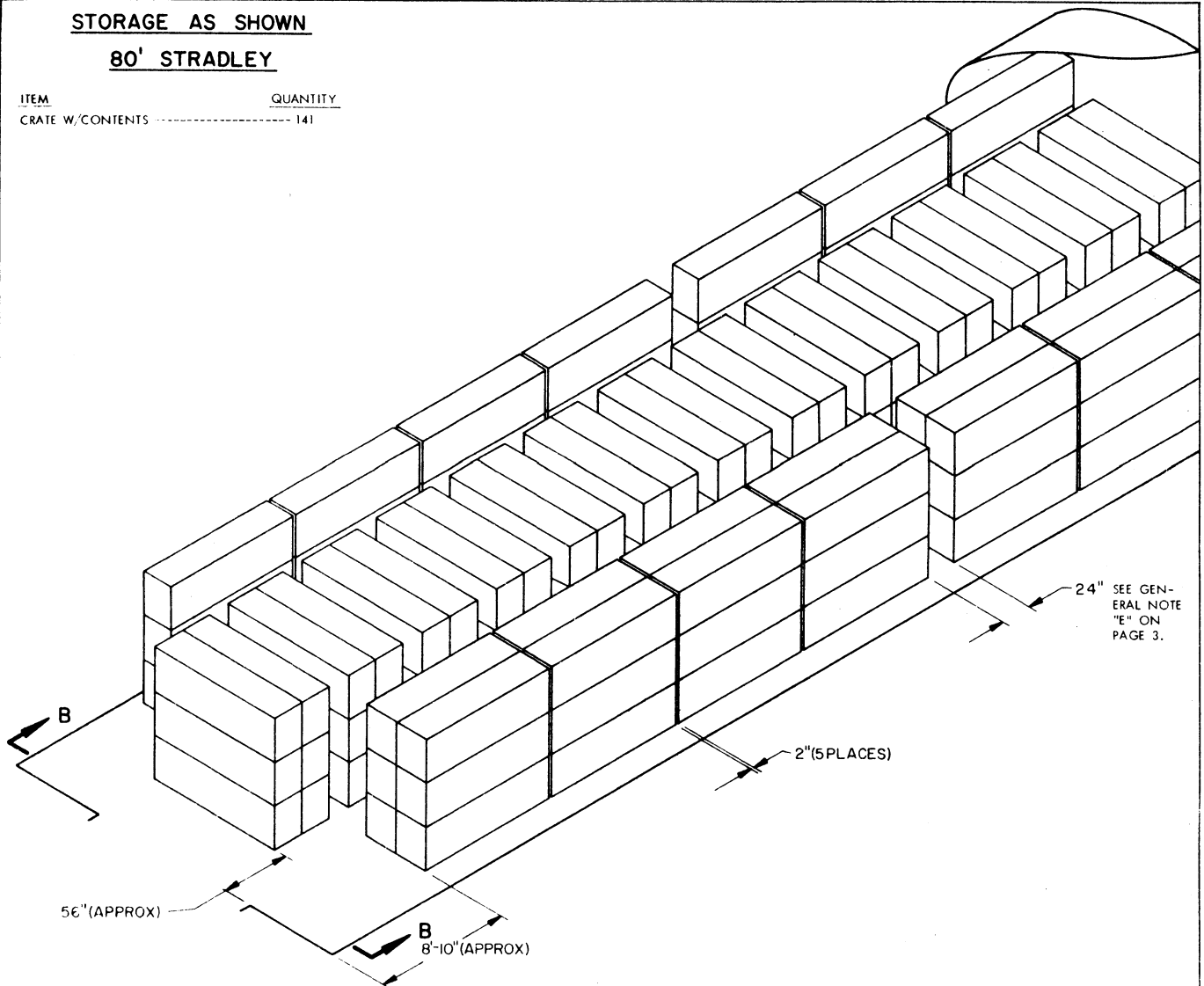
- A. FOR DETAILS OF CRATE, SEE PAGE 6.  
 CRATE DIMENSIONS ----- 116-1/4" LONG X 25-3/4" WIDE X 35-1/8" HIGH.  
 MAXIMUM GROSS WEIGHT - 1,020 POUNDS (APPROX).  
 MINIMUM GROSS WEIGHT - 766 POUNDS (APPROX).  
 TARE WEIGHT ----- 270 POUNDS (APPROX).
- B. ITEM LOTS WILL NOT BE MIXED, BUT ONLY TO THE EXTENT THAT ITEMS OF ONE LOT WILL NOT BE STACKED ON TOP OF ITEMS FROM ANOTHER LOT.
- C. STORED CRATES MUST NOT CONTACT A WALL OF A MAGAZINE.
- D. THE AISLE DIMENSIONS SHOWN HEREIN MAY BE ADJUSTED TO SUIT LOCAL CONDITIONS AND/OR AVAILABLE MATERIALS HANDLING EQUIPMENT (MHE). HOWEVER, AN INSPECTION AISLE, NOT LESS THAN EIGHTEEN INCHES (18") WIDE, MUST BE MAINTAINED AT THE SIDE OF AN ITEM WHERE A FILLING PLUG IS LOCATED. SEE GENERAL NOTE "J" BELOW.
- E. LATERAL ACCESS AISLES ARE SHOWN NEAR THE MIDPOINT WITHIN THE ROWS OF LONGITUDINALLY POSITIONED CONTAINER STACKS, TO PROVIDE EASY PASSAGE TO OPPOSITE SIDES OF A MAGAZINE. THE USE OF AND/OR THE LOCATION OF A LATERAL AISLE IS OPTIONAL.
- F. IF THE AVAILABLE MHE PERMITS, ADDITIONAL CRATES WITH ITEMS MAY BE STORED WITHIN THE FRONTAL AREA OF A MAGAZINE.
- G. SHORT WOODEN SHIMS MAY BE REQUIRED UNDER THE ENDS OF THE STACKS STORED CROSSWISE IN A MAGAZINE, TO PROVIDE FOR STACK STABILITY. SEE THE "TYPICAL STACK" DETAIL ON PAGE 6.
- H. IF DESIRED, AND IF STACK-STABILITY IS MAINTAINED, THE CRATES MAY BE STACKED 4-HIGH IN A STRADLEY MAGAZINE AT THE LOCATIONS INDICATED WITHIN THE "SECTION B-B" VIEW ON PAGE 4.
- J. WHEN FORMING SIDE-BY-SIDE STACKS, THE CRATES MUST BE PLACED SO THAT THE FILLING PLUGS ON THE BOMBS ARE ADJACENT TO AN INSPECTION AISLE AS SHOWN.



STORAGE AS SHOWN

80' STRADLEY

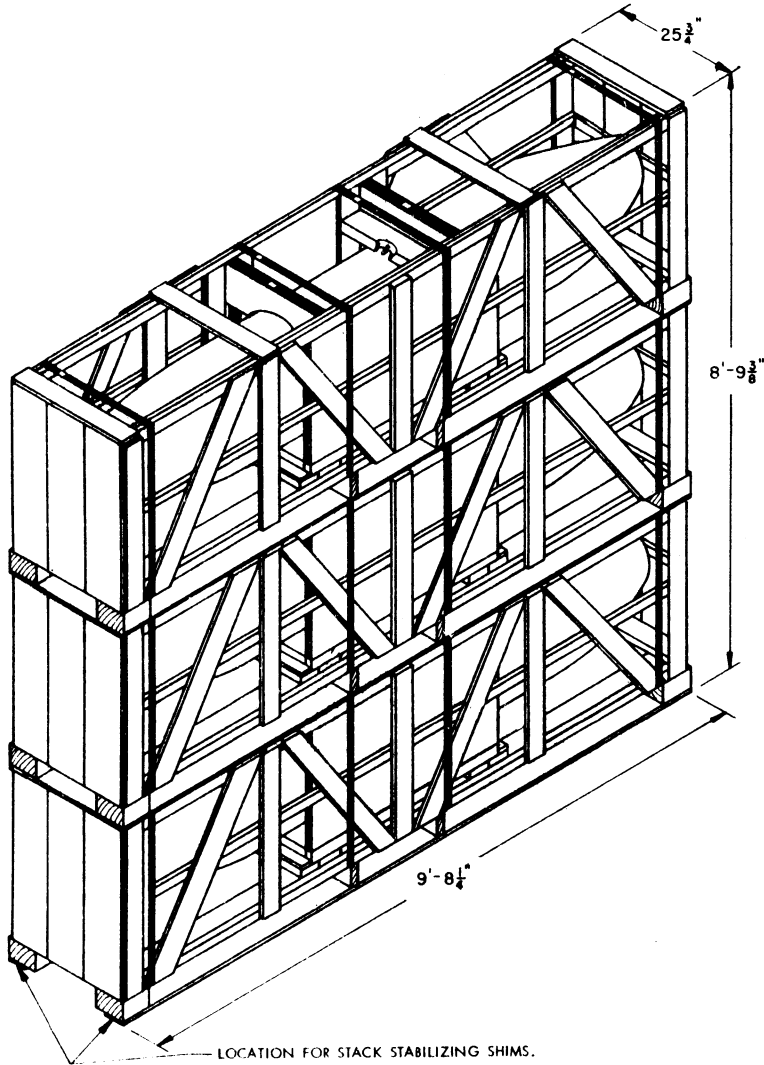
ITEM	QUANTITY
CRATE W/CONTENTS	----- 141



ISOMETRIC VIEW

(80' STRADLEY)

FOR "GENERAL NOTES", REFER TO PAGE 3.



**TYPICAL STACK**

NOTE: CONFIGURATION OF THE DEPICTED PACK-  
 AGES IS BASED ON U. S. AIR FORCE C-SIZE  
 DRAWING: TPO 1325-912-3175 (OOAMA HILL AFB  
 UTAH).