

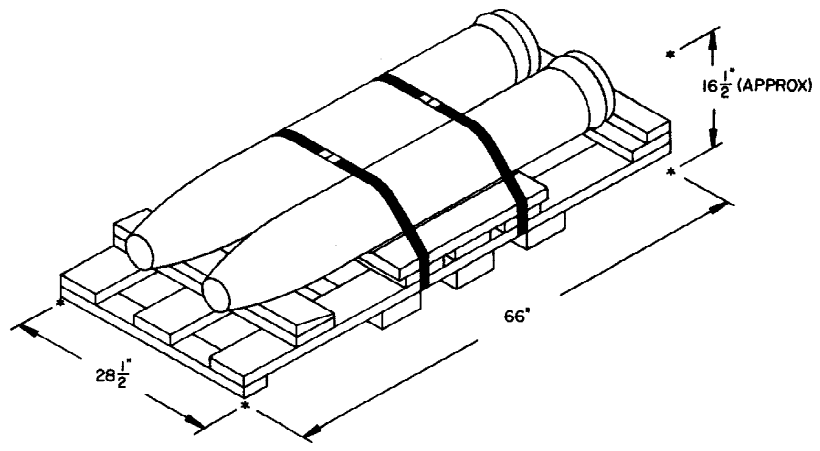
STORAGE IN 80' IGLOO AND
 80' STRADLEY MAGAZINES OF
 BOMB, CHEMICAL, GB, 500
 POUND, MK94 MOD O, UNITIZED
 TWO PER WOODEN PALLET

REVISIONS				DRAFTSMAN FD	PROJ ENG MWD/WRF
				CHECKED MWD	LOG ENGRG OFFICE MWD
				APPROVED, U.S. ARMY ARMAMENT, MUNITIONS AND CHEMICAL ENGINEER MJK David Parkhurst	
				APPROVED BY ORDER OF COMMANDING GENERAL, U.S. ARMY MATERIA, COMMAND (AMC) William F. Covert U.S. ARMY DEFENSE AMMUNITION CENTER AND SCHOOL	
				U.S. ARMY AMC DRAWING	
				MARCH 1988	
				CLASS	DIVISION
				19	48
				DRAWING	FILE
				4537	CB 1-14 PB 4

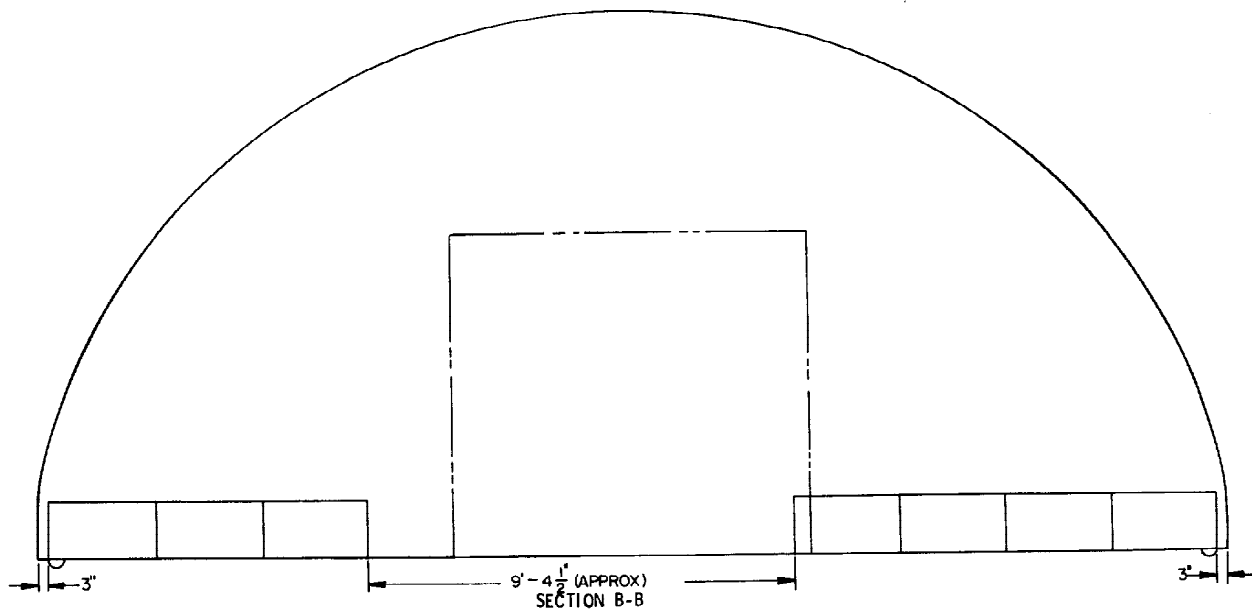
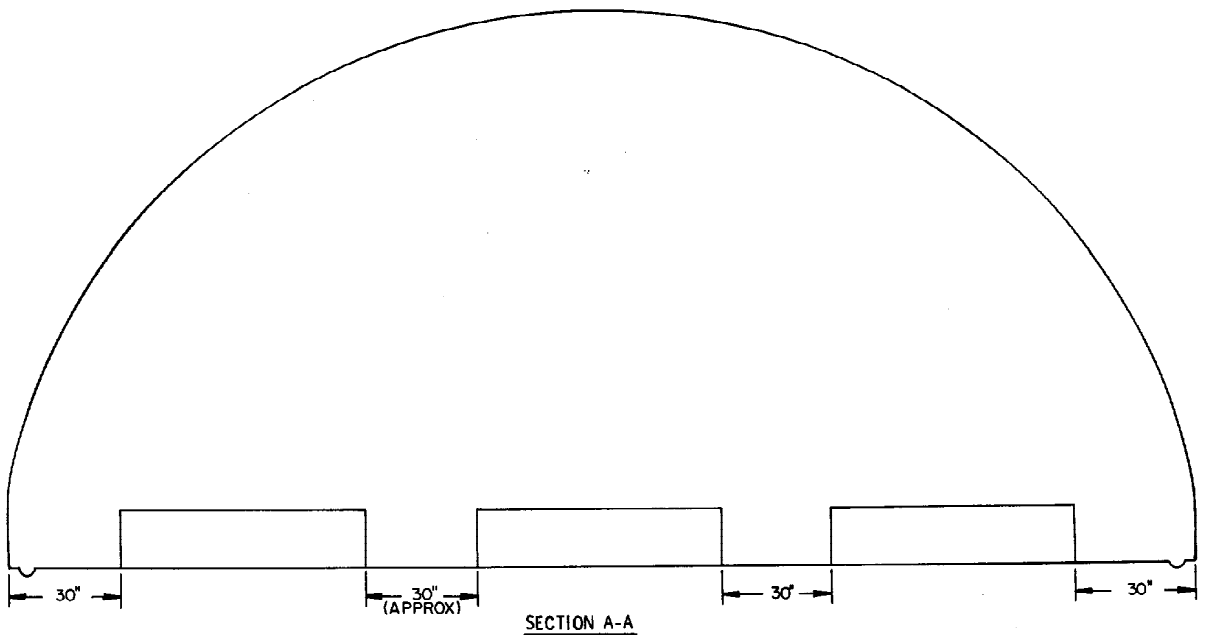
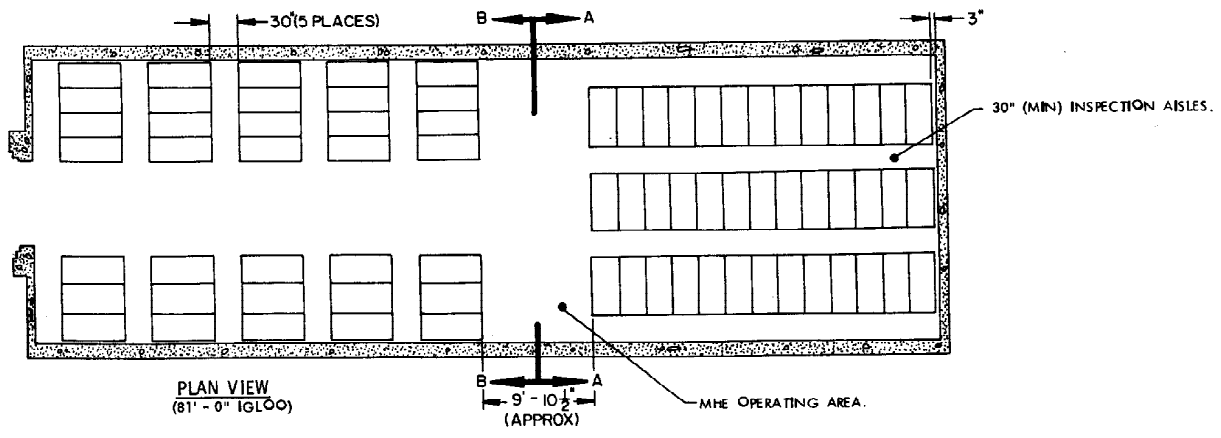
DO NOT SCALE

GENERAL NOTES

- A. THIS DOCUMENT HAS BEEN PREPARED AND ISSUED IN ACCORDANCE WITH AR740-1, AND AUGMENTS TM 743-200-1 (CHAPTER 5), TM 9-1300-206 (CHAPTER 4), AND TM 3-250.
- B. PALLET UNIT DETAILS:
- DIMENSIONS ----- 66" LONG X 28-1/2" WIDE X 16-1/2" HIGH (APPROX).
GROSS WEIGHT ---- 1,130 POUNDS (APPROX).
CUBE ----- 18 CU. FT. (APPROX).
- C. AISLE DIMENSIONS IN THIS DRAWING MAY BE ADJUSTED TO SUIT LOCAL CONDITIONS AND/OR AVAILABLE MATERIAL HANDLING EQUIPMENT; HOWEVER, THIRTY INCH (30") MINIMUM ACCESS AISLES WILL BE PROVIDED AT BOTH ENDS OF ALL BOMBS TO FACILITATE INSPECTION. SEE NOTE "D" FOR ADDITIONAL REQUIREMENTS.
- D. THE STORAGE LAYOUTS AND AISLE DIMENSIONS SPECIFIED IN THIS DRAWING ARE BASED ON THE REQUIREMENT THAT IN THE EVENT OF A LEAKING BOMB BEING DETECTED, THE UNIT WILL BE READILY ACCESSIBLE FOR REMOVAL BY MHE. A PALLET UNIT IS CONSIDERED "ACCESSIBLE" IF NOT MORE THAN TWELVE (12) "LIFTS" OF OTHER PALLET UNITS HAVE TO BE MADE TO GAIN ACCESS TO THE LEAKER UNIT. A "LIFT" MAY CONSIST OF ONE OR MORE PALLET UNITS, PROVIDING THE CAPACITY OF THE MHE PERMITS, AND SAFE HANDLING IS NOT JEOPARDIZED. IT IS IMPERATIVE, THEREFORE, THAT PALLET UNITS BE POSITIONED IN ACCORDANCE WITH THE STORAGE LAYOUTS AND SPECIFIED DIMENSIONS. ALSO, AT SOME LOCATIONS, THE NOSE-END OF BOMBS MUST BE POSITIONED AS INDICATED BY ARROWS IN THE STORAGE VIEWS TO PROVIDE ADEQUATE CLEARANCE FOR ACCESS BY FORKLIFT TRUCK FOR REMOVING A LEAKER UNIT FROM ANY LOCATION, IN ACCORDANCE WITH ABOVE REQUIREMENTS.
- E. STORED BOMBS MUST NOT CONTACT THE WALL OF A MAGAZINE. TO PROVIDE FOR THIS MANDATORY CLEARANCE REQUIREMENT, UNITS MAY BE ELIMINATED FROM THE DEPICTED STORAGE PATTERN AS NECESSARY.
- F. THE MAXIMUM FLOOR LOAD FOR A MAGAZINE, AS PRESCRIBED BY LOCAL STANDARDS, WILL NOT BE EXCEEDED.
- G. THE STORAGE PROCEDURES DEPICTED HEREIN FOR SPECIFIC TYPES OF MAGAZINES MAY ALSO BE UTILIZED TO STORE BOMBS IN OTHER TYPES OF APPROVED MAGAZINES. MINOR ADJUSTMENTS MAY BE MADE TO FACILITATE STORAGE IN OTHER TYPES OF MAGAZINES, HOWEVER, THE BASIC PRINCIPLES AS DEPICTED AND SPECIFIED HEREIN WILL BE COMPLIED WITH.
- H. THE MAGAZINE MUST COMPLY WITH ALL REQUIREMENTS AND BE APPROVED FOR THE STORAGE OF CHEMICAL ITEMS.



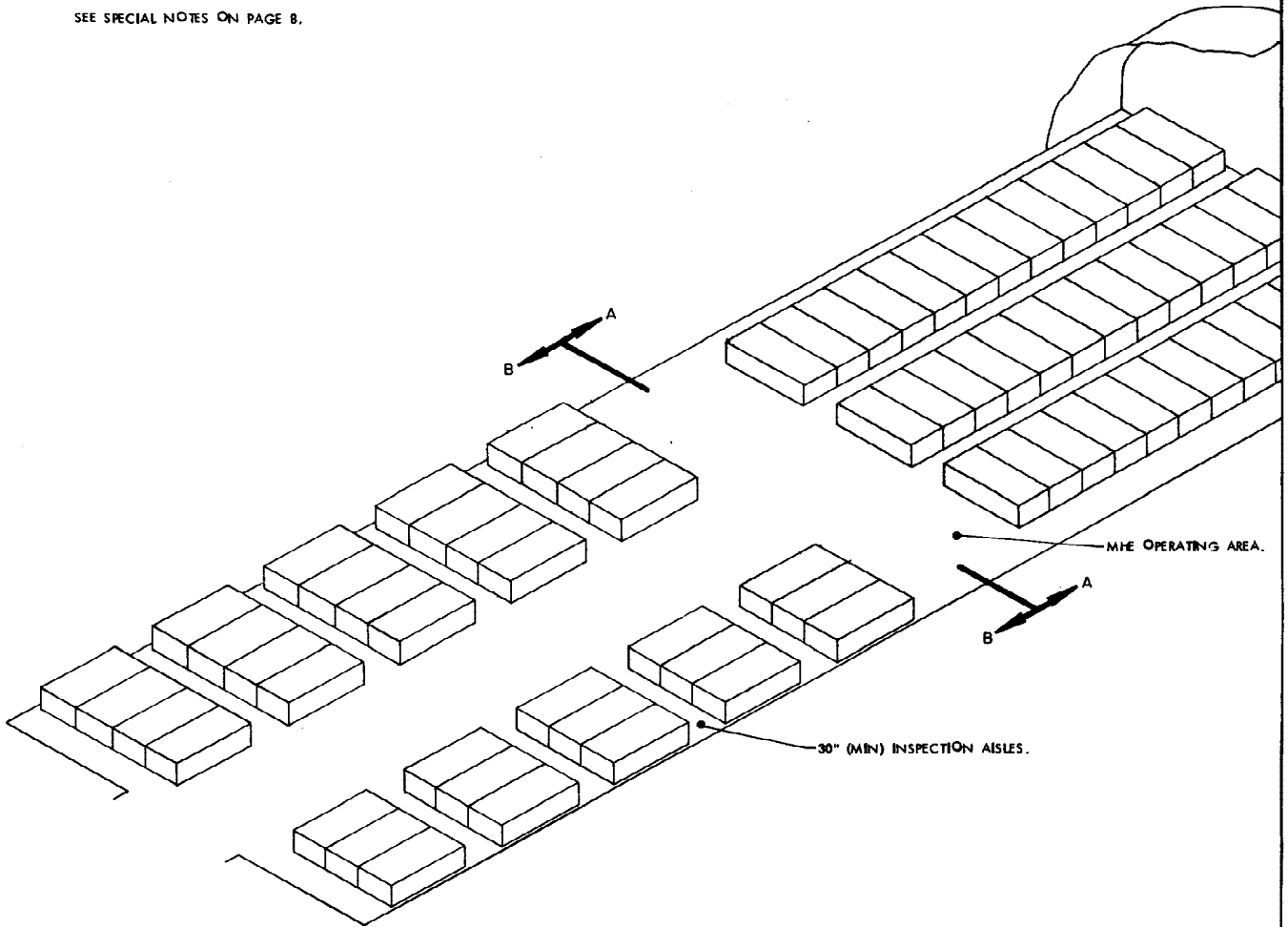
PALLET UNIT DETAIL



STORAGE IN 81' - 0" IGLOO

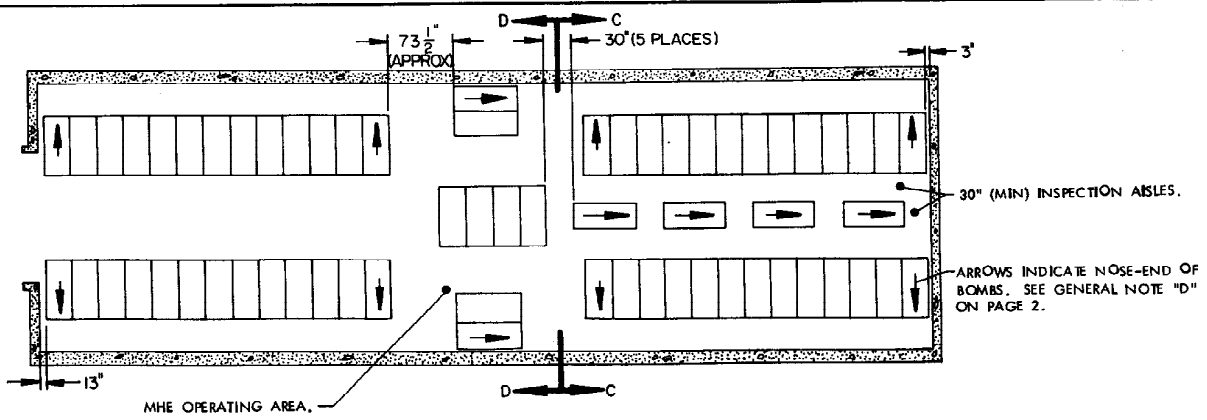
<u>ITEM</u>	<u>QUANTITY</u>
PALLET UNITS -----	74

SEE SPECIAL NOTES ON PAGE 8.

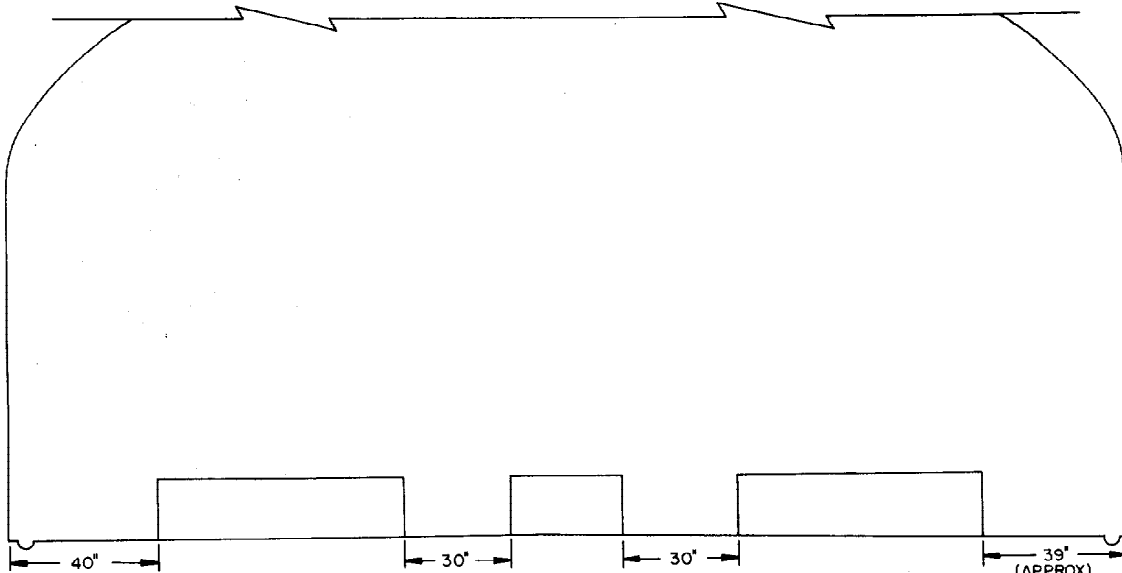


ISOMETRIC VIEW
(81' - 0" IGLOO)

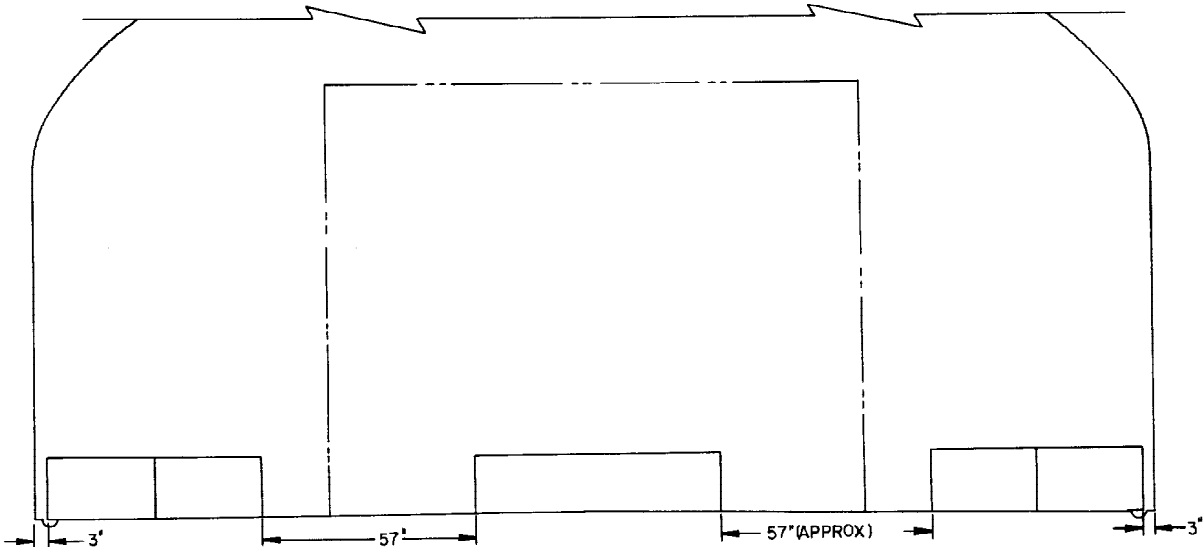
FOR "GENERAL NOTES", SEE PAGE 2.



PLAN VIEW
(80' - 0" STRADLEY)



SECTION C-C



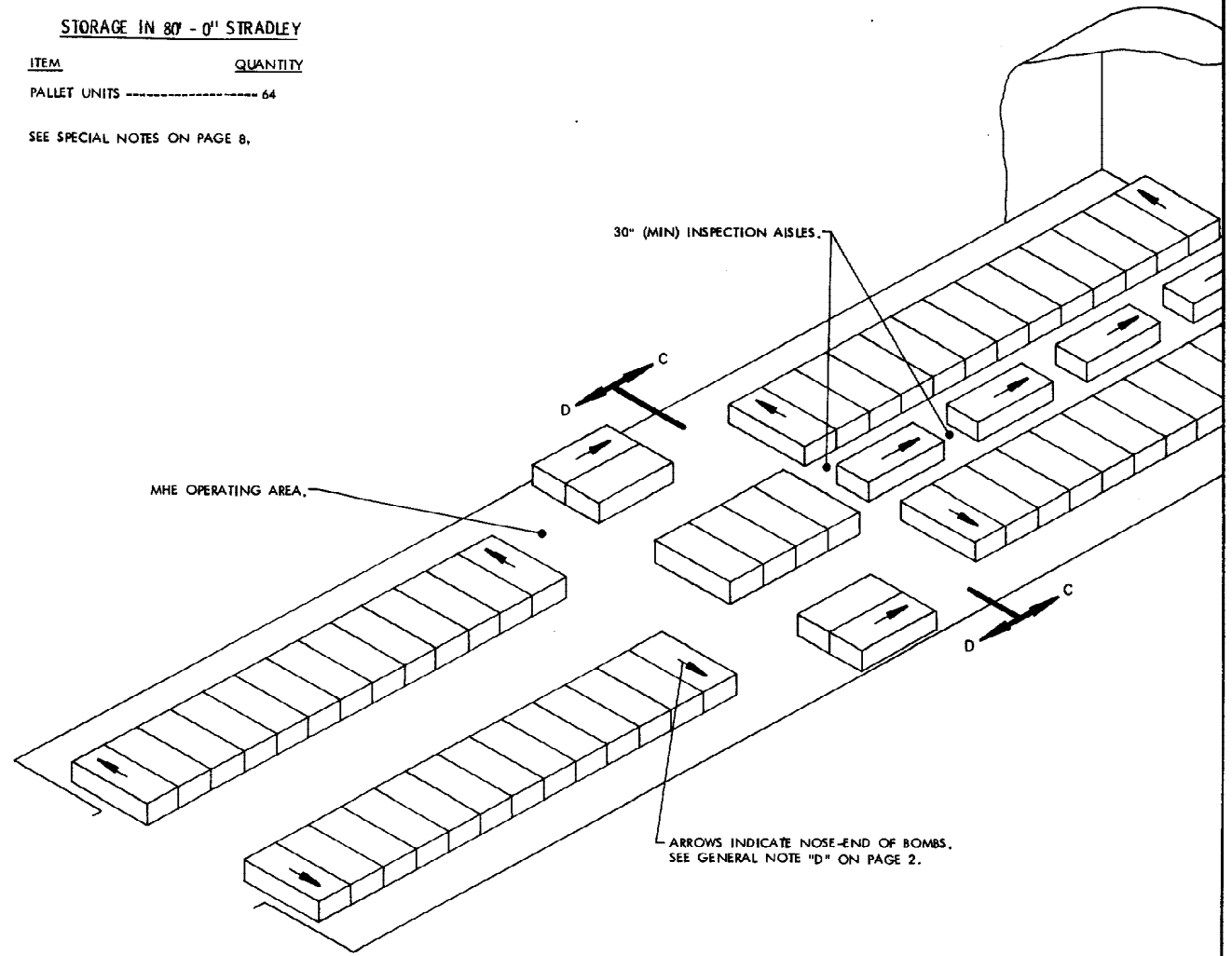
SECTION D-D

STORAGE IN 80' - 0" STRADLEY

ITEM QUANTITY

PALLET UNITS ----- 64

SEE SPECIAL NOTES ON PAGE 8.



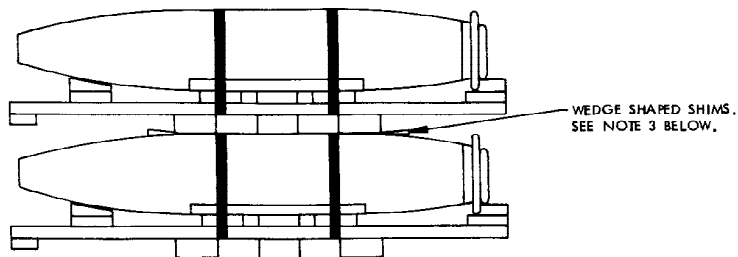
MHE OPERATING AREA.

30" (MIN) INSPECTION AISLES.

ARROWS INDICATE NOSE-END OF BOMBS.
SEE GENERAL NOTE "D" ON PAGE 2.

ISOMETRIC VIEW
(80' - 0" STRADLEY)

FOR "GENERAL NOTES", SEE PAGE 2.



STACKING DETAIL

SEE THE SPECIAL NOTES BELOW.

SPECIAL NOTES:

1. IF THE QUANTITY OF UNITS TO BE STORED EXCEEDS THE 1-LAYER PROCEDURES SHOWN, UNITS MAY BE STACKED A MAXIMUM OF 2 LAYERS HIGH, BUT ONLY TO THE EXTENT NECESSARY TO ACCOMMODATE THE ADDITIONAL QUANTITY.
2. WHEN STACKING UNITS, THE ENDS AND SIDES OF THE UNITS MUST BE IN VERTICAL ALIGNMENT.
3. SINCE THE PALLET HAS THREE SKIDS, THE CURVATURE OF THE FIRST LAYER BOMB BODIES MAY NOT PERMIT FULL BEARING OF ALL SKIDS OF THE SECOND LAYER UNIT. TO PROVIDE SAFE AND STABLE STACKS, WEDGE SHAPED SHIMS, AS NECESSARY, SHOULD BE INSERTED BETWEEN THE FIRST LAYER BOMB BODIES AND THE SKIDS OF THE SECOND LAYER UNIT.