



## GENERAL NOTES

## ( GENERAL NOTES CONTINUED )

- A. THIS DOCUMENT HAS BEEN PREPARED AND ISSUED IN ACCORDANCE WITH AR 740-1, AND AUGMENTS TM 743-200-1 ( CHAPTER 5 ), TM 9-1300-206 ( CHAPTER 4 ), AND TM 3-250.
- B. PALLET UNIT DETAILS:
- 24 PROJECTILE PALLET UNIT:
- DIMENSIONS --- 20-1/2" LONG X 35-1/2" WIDE X 20" HIGH ( APPROX ).  
GROSS WEIGHT - 799 POUNDS ( APPROX ).
- C. NOTE: THE PROCEDURES DEPICTED IN THIS DRAWING ARE FOR 24-PROJECTILE PALLET UNITS. HOWEVER, THESE PROCEDURES CAN ALSO BE USED FOR STORING 15-PROJECTILE PALLET UNITS. WHEN 15-PROJECTILE UNITS ARE POSITIONED VERTICALLY, THE DIMENSIONS OF THE STABILIZER ASSEMBLIES WILL BE ADJUSTED ACCORDINGLY AND THE LENGTH OF THE 2" X 4" RISER PIECES REDUCED TO 30". IN THE HORIZONTAL POSITION, 15-PROJECTILE UNITS MAY BE STACKED UP TO 6 LAYERS HIGH. ALSO THE QUANTITY OF PALLET UNITS PER STACK WILL BE INCREASED.
- D. AISLE DIMENSIONS SHOWN IN THIS DRAWING MAY BE ADJUSTED TO SUIT LOCAL CONDITIONS AND/OR AVAILABLE MATERIALS HANDLING EQUIPMENT; HOWEVER, THIRTY-INCH ( 30" ) MINIMUM ACCESS AISLES WILL BE PROVIDED, AS SHOWN, TO FACILITATE INSPECTION.
- E. STORED PALLET UNITS MUST NOT CONTACT THE WALL OF A MAGAZINE. TO PROVIDE FOR THIS MANDATORY CLEARANCE REQUIREMENT, UNITS MAY BE ELIMINATED FROM THE DEPICTED STORAGE PATTERN AS NECESSARY.
- F. THE MAXIMUM FLOOR LOAD FOR A MAGAZINE, AS PRESCRIBED BY LOCAL STANDARDS, WILL NOT BE EXCEEDED.
- G. THE STORAGE PROCEDURES DEPICTED HEREIN FOR SPECIFIC TYPES OF MAGAZINES MAY ALSO BE UTILIZED TO STORE PALLET UNITS IN OTHER TYPES OF APPROVED MAGAZINES. MINOR ADJUSTMENTS MAY BE MADE TO FACILITATE STORAGE IN OTHER TYPES OF MAGAZINES, HOWEVER, THE BASIC PRINCIPLES AS DEPICTED HEREIN WILL BE COMPLIED WITH.
- H. THE MAGAZINE MUST COMPLY WITH ALL REQUIREMENTS AND BE APPROVED FOR THE STORAGE OF CHEMICAL ITEMS.
- J. OTHER COMPATIBLE ITEMS MAY BE STORED IN A MAGAZINE WHICH IS PARTIALLY FILLED WITH THE DESIGNATED ITEM.
- K. A COMBINATION OF MATERIAL HANDLING EQUIPMENT ( MHE ), SUCH AS FORKLIFT TRUCKS, PALLET JACKS, AND OTHER APPROVED EQUIPMENT, MAY BE USED TO PLACE AND/OR REMOVE UNITS WITHIN A STACK. IF SUITABLE MHE IS NOT AVAILABLE TO PERMIT PLACING AND/OR REMOVAL OPERATIONS WITHIN THE DESIGNATED MHE OPERATING AISLE, IT MAY BE NECESSARY TO OMIT ONE ROW OF UNITS ADJACENT TO THE MHE OPERATING AISLE TO GAIN ADDITIONAL OPERATING SPACE.
- L. REFER TO PAGE 14 FOR GUIDANCE RELATIVE TO LOT SEPARATION REQUIREMENTS WHEN STORING MULTIPLE LOTS WITHIN A MAGAZINE.
- M. THE STORAGE PROCEDURES DEPICTED FOR IGLOO MAGAZINES ARE ALSO APPLICABLE FOR STEEL ARCH MAGAZINES WHICH HAVE A SIMILAR CROSS SECTIONAL AREA.
- N. PROVIDED SUITABLE NARROW AISLE STACKER MHE IS AVAILABLE, IT IS PERMITTED TO PLACE ADDITIONAL PALLET UNITS ON TOP OF THE ONE-LAYER HIGH ROWS ADJACENT TO THE MHE OPERATING AISLE, AS SHOWN, TO GAIN INCREASED STORAGE DENSITY.
- O. DUNNAGE LUMBER SPECIFIED THROUGHOUT THIS PROCEDURAL DRAWING IS OF NOMINAL SIZE. FOR EXAMPLE, 1" X 4" MATERIAL IS ACTUALLY 3/4" THICK BY 3-1/2" WIDE AND 2" X 4" MATERIAL IS 1-1/2" THICK BY 3-1/2" WIDE.
- P. WEDGES ARE REQUIRED TO PERMIT LEVEL STACKING OF UNITS IN IGLOO AND STRADLEY MAGAZINES, WHICH HAVE FLOORS THAT SLOPE TOWARD THE SIDEWALL OF THE MAGAZINE. WEDGES ARE NOT REQUIRED IN OVAL-ARCH MAGAZINES, WHERE THE FLOOR DOES NOT SLOPE TOWARD THE SIDEWALL OF THE MAGAZINE. WEDGES WILL BE USED IN AN OVAL-ARCH MAGAZINE IF THE FLOOR IS SLOPED TO THE SIDE WALLS.
- Q. WHEN STORING UNITS IN THE VERTICAL POSITION, IT MAY BE NECESSARY TO OMIT ONE UNIT FROM THE TOP LAYER OF EACH STACK AT THE OPERATING AISLE IF THE AVAILABLE MHE CANNOT PLACE THE UNIT WITHOUT STRIKING THE MAGAZINE CEILING.
- R. WHEN ANY STRAP IS SEALED AT AN END-OVER-END LAP JOINT, A MINIMUM OF ONE ( 1 ) SEAL, WITH TWO ( 2 ) PAIR OF CRIMPS PER SEAL MUST BE USED TO SEAL THE JOINT.

( CONTINUED AT RIGHT )

## MATERIAL SPECIFICATIONS

- LUMBER ----- : SEE TM 743-200-1, DUNNAGE LUMBER: FED SPEC MM-L-751.
- NAILS ----- : COMMON, CEMENT COATED OR CHEMICALLY ETCHED,  
FED SPEC FF-N-105.  
ALT: ANNULAR-RING NAIL OF THE SAME SIZE.
- STRAPPING, STEEL ---- : CLASS I, TYPE I OR IV, HEAVY DUTY, FINISH A OR B  
( GRADE 2 ), FED SPEC QQ-S-781.
- SEAL, STRAP ----- : TYPE D, STYLE I, II OR IV, CLASS H,  
FED SPEC QQ-S-781.

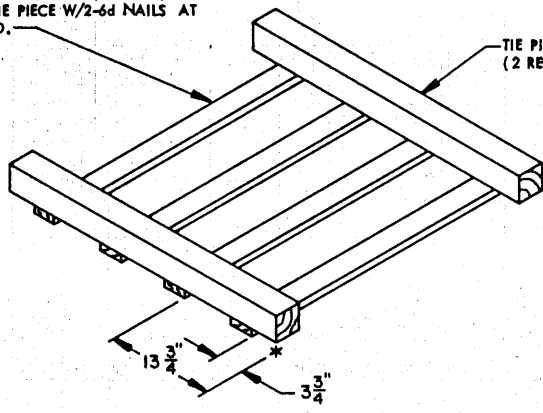
## REVISIONS

REVISION NO. 1, DATED MARCH 1977, CONSISTS OF:

1. DELETING PROCEDURES FOR 68-PROJECTILE PALLET UNITS.
2. REPLACING 4" X 4" RISERS WITH STABILIZER ASSEMBLIES.
3. ADDING PROCEDURES FOR HORIZONTAL STORAGE OF PALLET UNITS.
4. UPDATING GENERAL NOTES AND ADDING NOTE PERTAINING TO PROCEDURES FOR 15-PROJECTILE PALLET UNITS.

RISER, 1" X 3" X 34" (4 REQD). NAIL TO THE TIE PIECE W/2-6d NAILS AT EACH END.

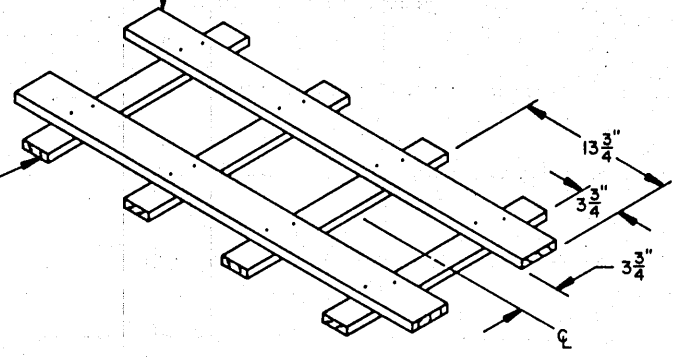
TIE PIECE, 4" X 4" X 40" (2 REQD).



**SINGLE-STACK STABILIZER ASSEMBLY**

TIE PIECE, 1" X 4" X 40" (2 REQD). POSITION BOTH PIECES AS SHOWN AND NAIL THROUGH THE TIE PIECES INTO THE RISER PIECES W/2-6d NAILS AT EACH JOINT AND CLINCH.

RISER, 1" X 3" X 20" (4 REQD).

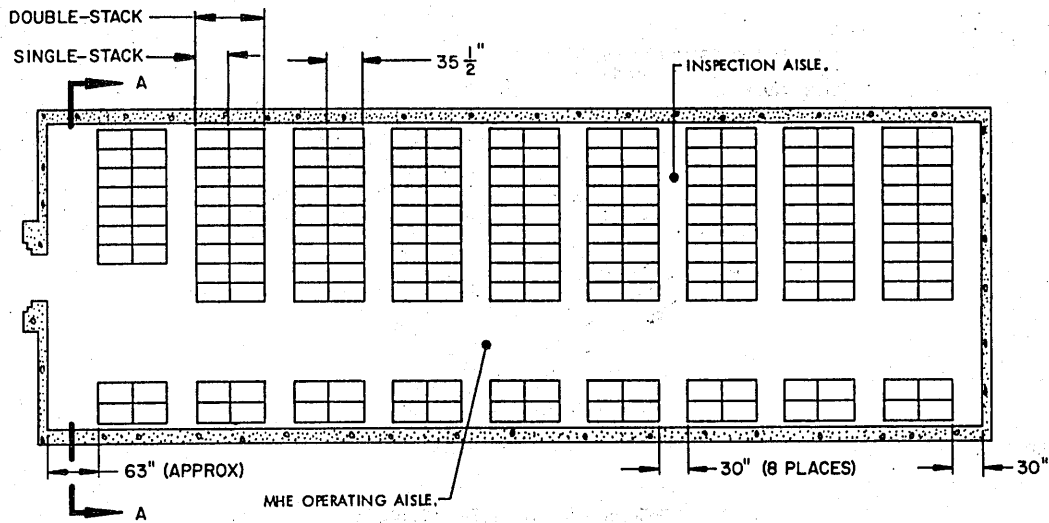


**DOUBLE-STACK STABILIZER ASSEMBLY**

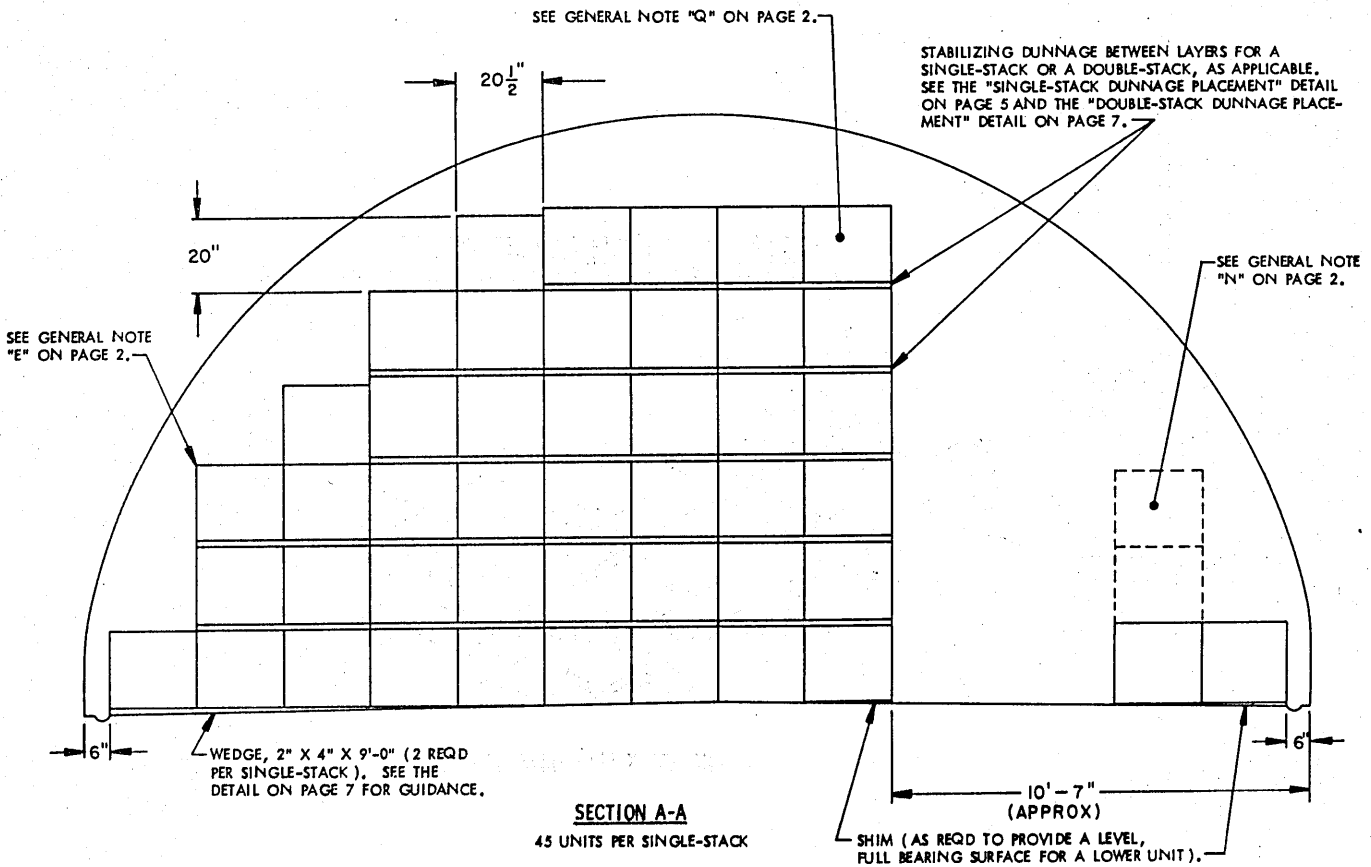
STORAGE AS SHOWN

80' IGLOO

ITEM	QUANTITY
PALLET UNITS -----	786



PLAN VIEW  
(80' IGLOO)



SECTION A-A  
45 UNITS PER SINGLE-STACK

IGLOO STORAGE PROCEDURES (PALLET UNITS POSITIONED VERTICALLY)

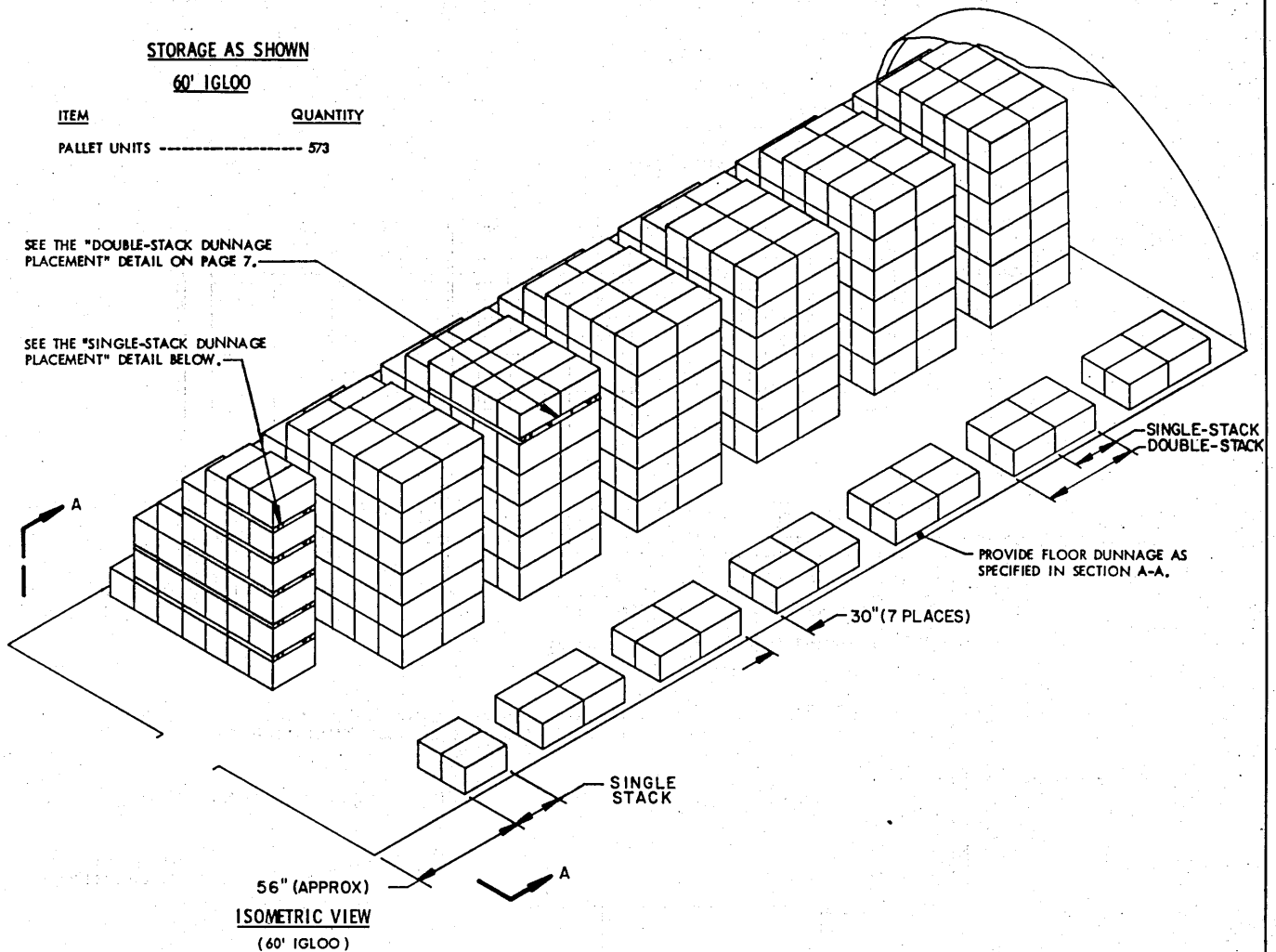
**STORAGE AS SHOWN**

**60' IGLOO**

ITEM QUANTITY  
 PALLET UNITS ----- 573

SEE THE "DOUBLE-STACK DUNNAGE  
 PLACEMENT" DETAIL ON PAGE 7.

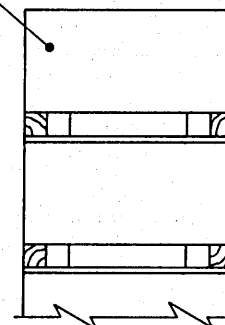
SEE THE "SINGLE-STACK DUNNAGE  
 PLACEMENT" DETAIL BELOW.



SEE "GENERAL NOTES" AND "MATERIAL SPECIFICATIONS"  
 ON PAGE 2.

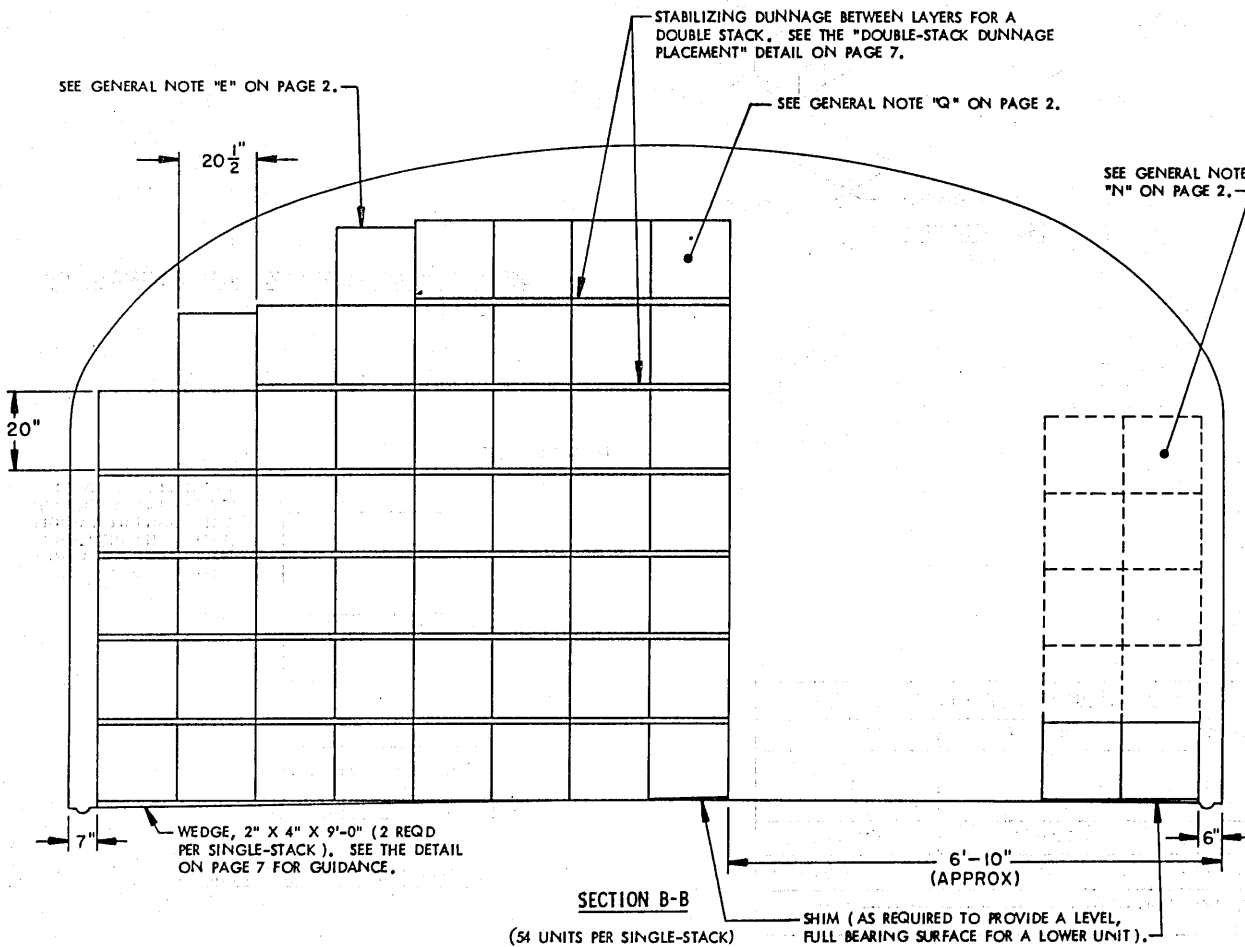
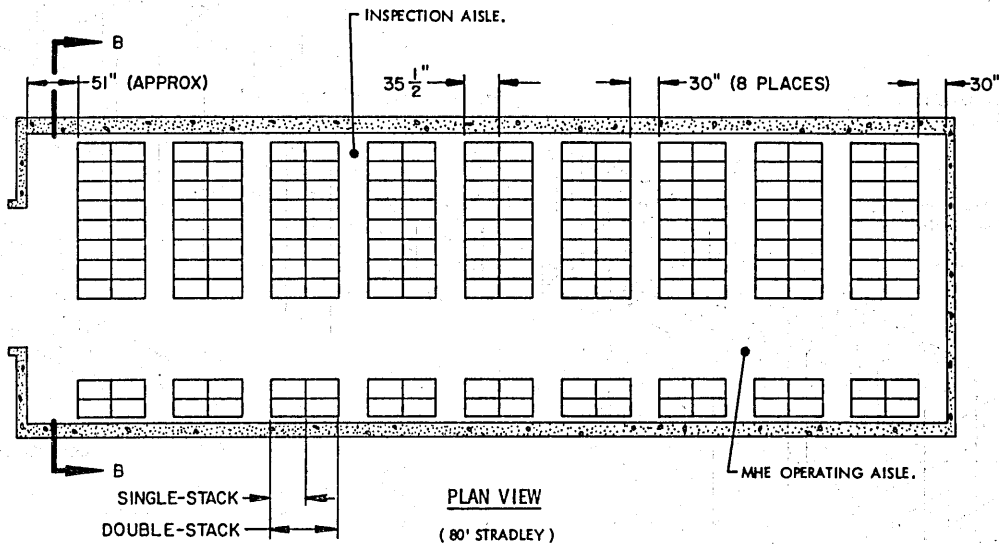
INDICATES PALLET  
 UNIT.

STABILIZER ASSEMBLY (1 REQD  
 BETWEEN LAYERS FOR EACH 2  
 PALLET UNITS IN A SINGLE-  
 STACK). SEE THE "SINGLE-  
 STACK STABILIZER ASSEMBLY"  
 DETAIL ON PAGE 3.



**SINGLE-STACK DUNNAGE PLACEMENT**

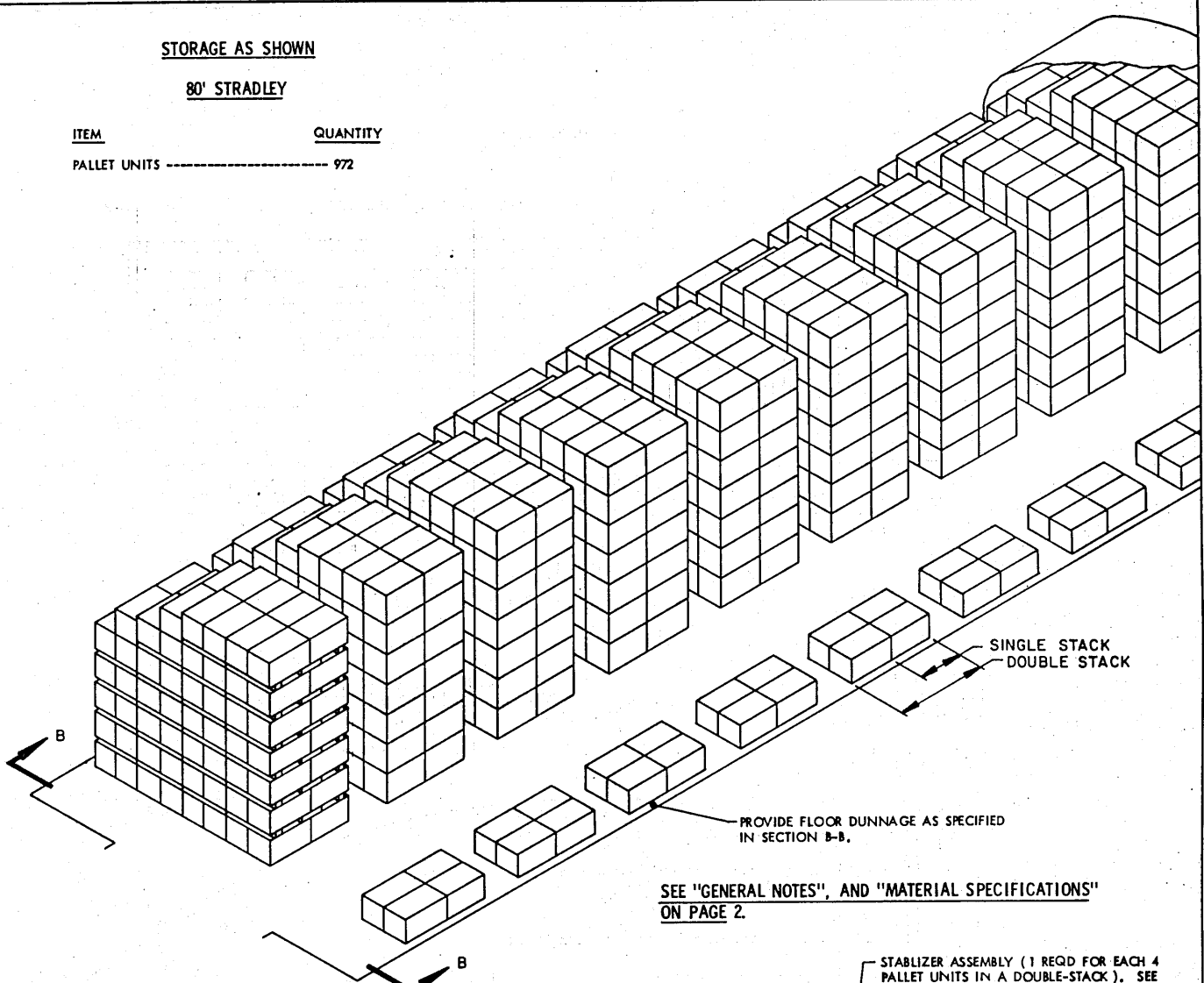
BILL OF MATERIAL ( PER DOUBLE-STACK )		
LUMBER	LINEAR FEET	BOARD FEET
1" X 3"	108	27
1" X 4"	108	36
2" X 4"	108	72
NAILS	NO. REQD	POUNDS
6d (2")	256	1-1/2
WEDGE, 9'-0" LONG	-----	4 REQD



**STORAGE AS SHOWN**

**80' STRADLEY**

**ITEM** **QUANTITY**  
 PALLET UNITS ----- 972

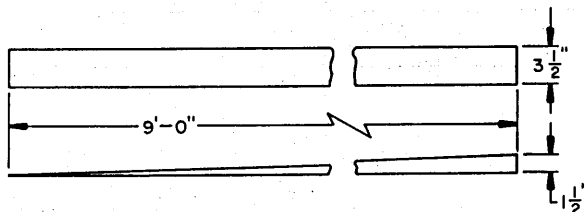
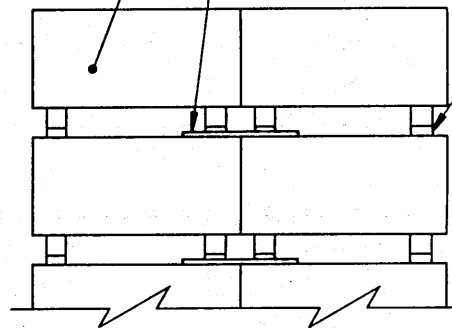


SEE "GENERAL NOTES", AND "MATERIAL SPECIFICATIONS" ON PAGE 2.

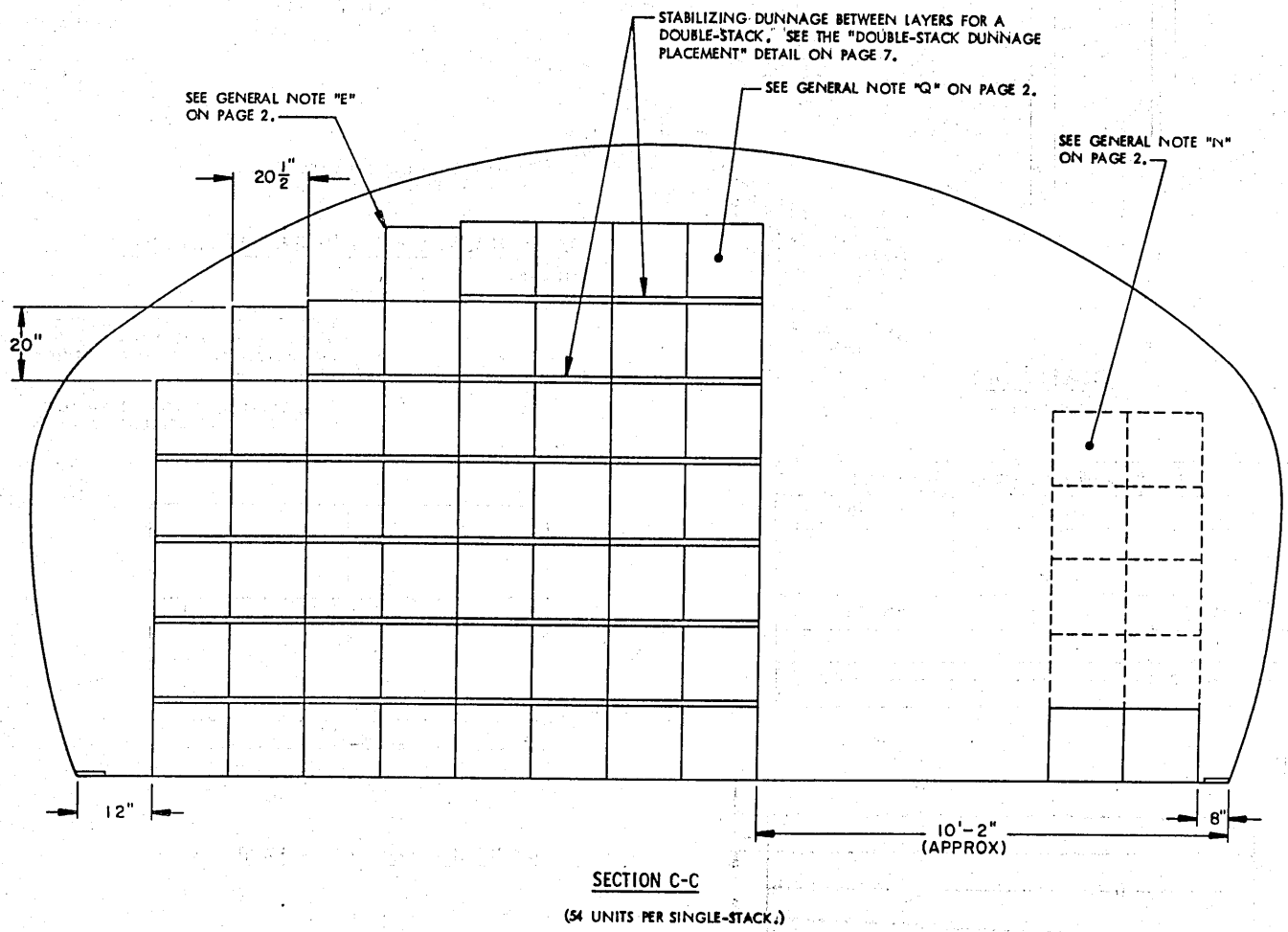
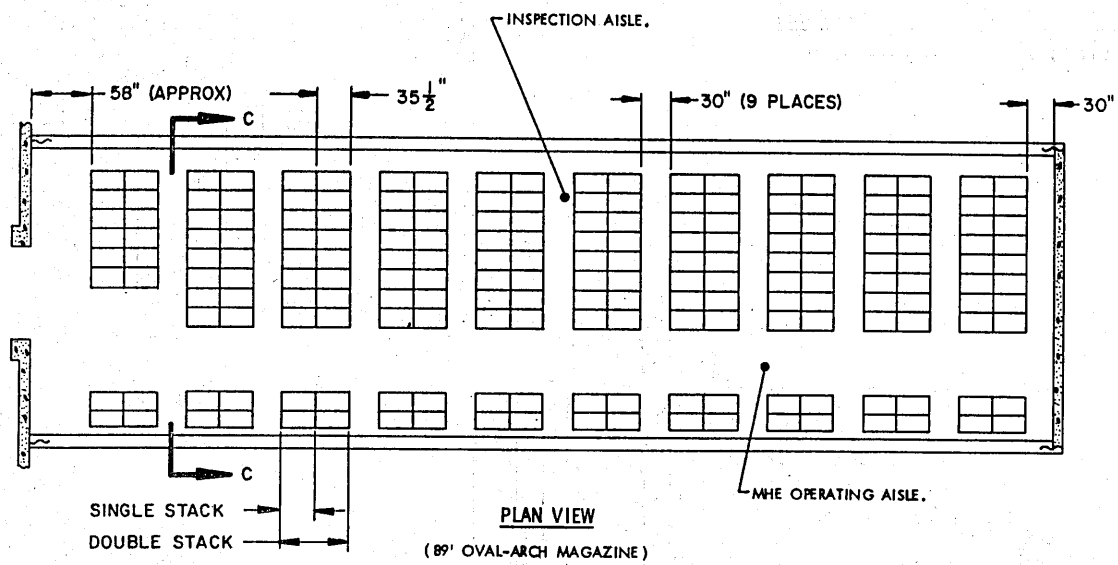
**ISOMETRIC VIEW**  
(80' STRADLEY)

BILL OF MATERIAL ( PER DOUBLE-STACK )		
LUMBER	LINEAR FEET	BOARD FEET
1" X 3"	140	35
1" X 4"	140	47
2" X 4"	140	94
NAILS	NO. REQD	POUNDS
6d (2")	336	2
WEDGE, 9'-0" LONG -----		4 REQD

INDICATES PALLET UNIT.  
 STABILIZER ASSEMBLY (1 REQD FOR EACH 4 PALLET UNITS IN A DOUBLE-STACK). SEE THE "DOUBLE-STACK STABILIZER ASSEMBLY" DETAIL ON PAGE 3.  
 RISER, 2" X 4" X 40" (2 REQD FOR EACH 4 PALLET UNITS IN A DOUBLE-STACK).



**WEDGE DETAIL**  
(NOMINAL 2" X 4" MATERIAL)

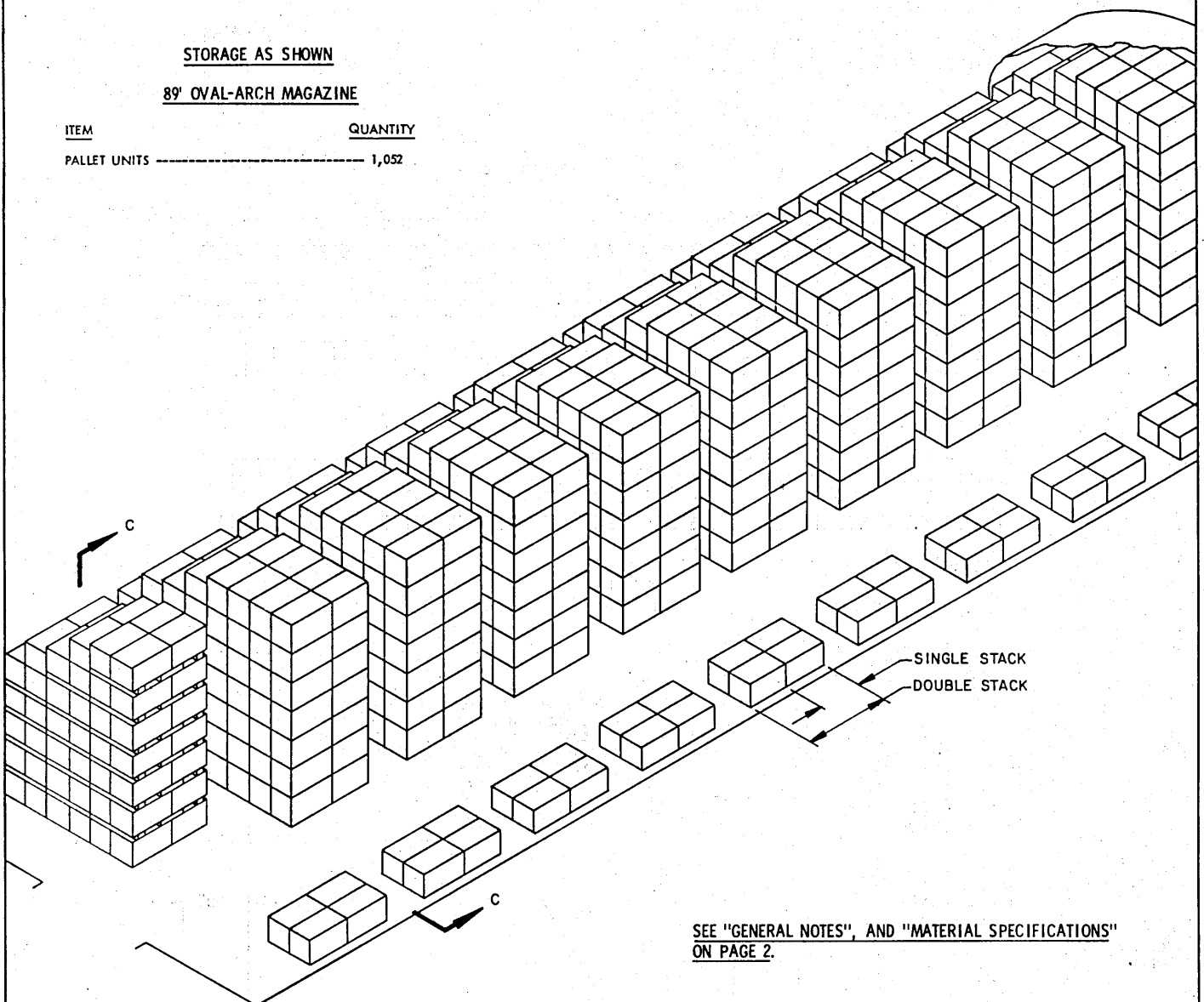




**STORAGE AS SHOWN**

**89' OVAL-ARCH MAGAZINE**

ITEM \_\_\_\_\_ QUANTITY \_\_\_\_\_  
 PALLET UNITS ----- 1,052



SEE "GENERAL NOTES", AND "MATERIAL SPECIFICATIONS" ON PAGE 2.

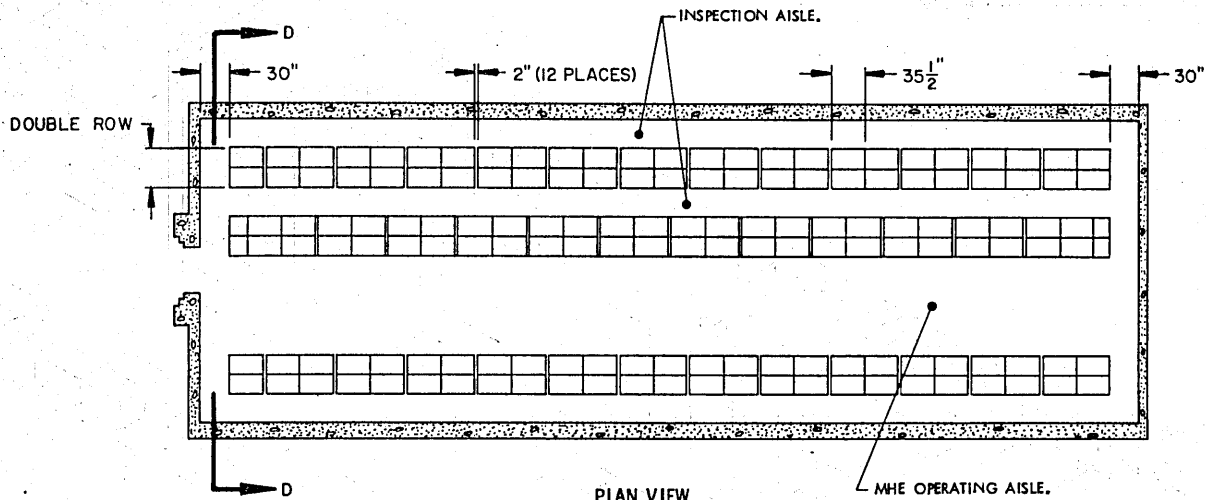
**ISOMETRIC VIEW**  
 ( 89' OVAL-ARCH MAGAZINE )

BILL OF MATERIAL ( PER DOUBLE-STACK )		
LUMBER	LINEAR FEET	BOARD FEET
1" X 3"	140	35
1" X 4"	140	47
2" X 4"	140	94
NAILS	NO. REQD	POUNDS
6d ( 2" )	336	2

**STORAGE AS SHOWN**

**80' IGLOO**

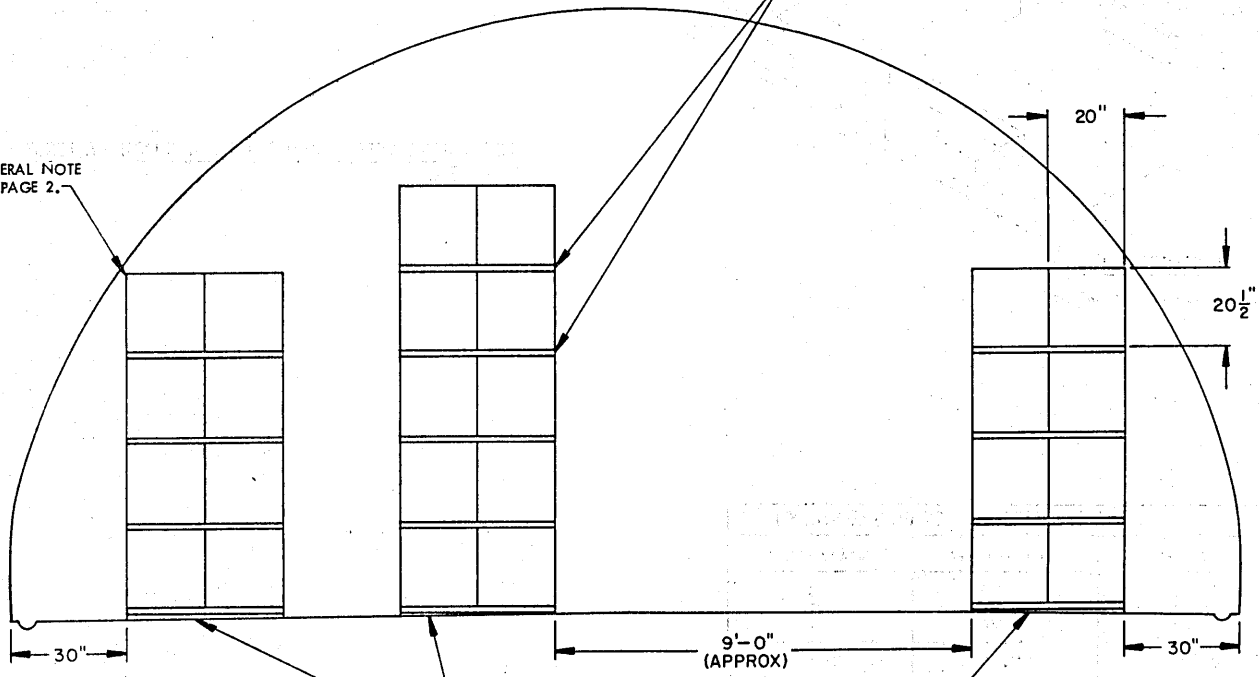
ITEM	QUANTITY
PALLET UNITS	----- 648



**PLAN VIEW**  
(80' IGLOO)

RISER, 2" X 4" X 40" FOR A DOUBLE-ROW  
(3 REQD UNDER EACH TWO LATERALLY  
ADJACENT PALLET UNITS). SEE THE "UNIT  
AND DUNNAGE PLACEMENT DETAILS" ON  
PAGE 11.

SEE GENERAL NOTE  
"E" ON PAGE 2.



**SECTION D-D**

SHIM (AS REQD TO PROVIDE A LEVEL,  
FULL BEARING SURFACE FOR A LOWER UNIT).

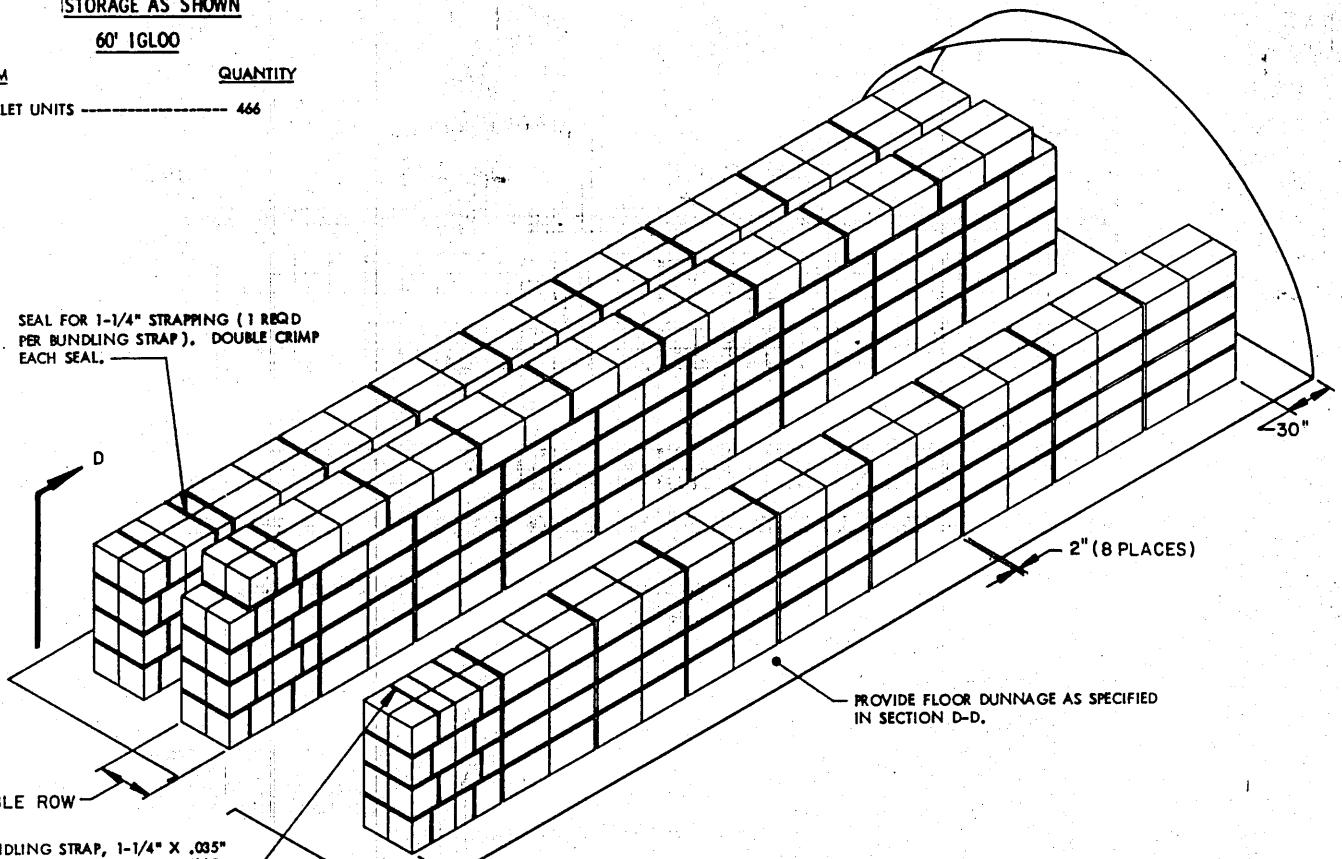
**STORAGE AS SHOWN**

**60' IGLOO**

ITEM QUANTITY

PALLET UNITS ----- 466

SEAL FOR 1-1/4" STRAPPING (1 REQD PER BUNDLING STRAP), DOUBLE CRIMP EACH SEAL.



DOUBLE ROW

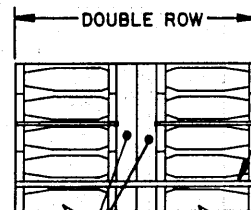
BUNDLING STRAP, 1-1/4" X .035" X 11'-6" LONG STEEL STRAPPING (1 REQD PER TWO PALLET UNITS). SEE THE "UNIT AND DUNNAGE PLACEMENT DETAILS" BELOW.

**ISOMETRIC VIEW**  
(60' IGLOO)

PROVIDE FLOOR DUNNAGE AS SPECIFIED IN SECTION D-D.

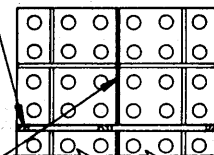
SEE "GENERAL NOTES", AND "MATERIAL SPECIFICATIONS" ON PAGE 2.

BILL OF MATERIAL ( PER 2 PALLET UNITS )		
LUMBER	LINEAR FEET	BOARD FEET
2" X 4"	10	7
STEEL STRAPPING, 1-1/4" X .035" --- 11'-6" REQD ----- 1-3/4 LBS		
SEAL FOR 1-1/4" STRAPPING ----- 1 REQD ----- NIL		



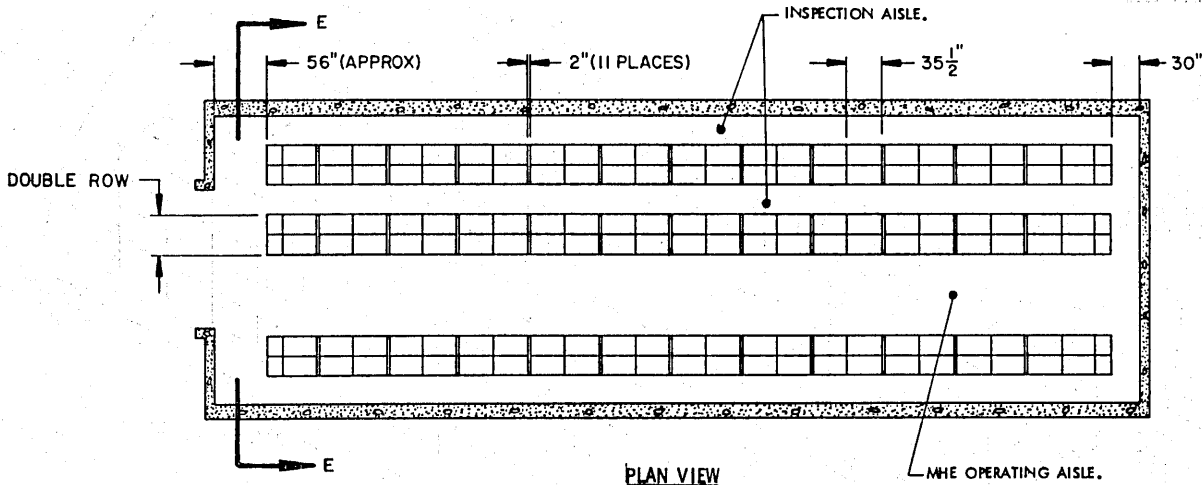
PALLET SKIDS BUTTED TOGETHER.

RISER, 2" X 4" X 40" (3 REQD UNDER EACH TWO LATERALLY ADJACENT PALLET UNITS).

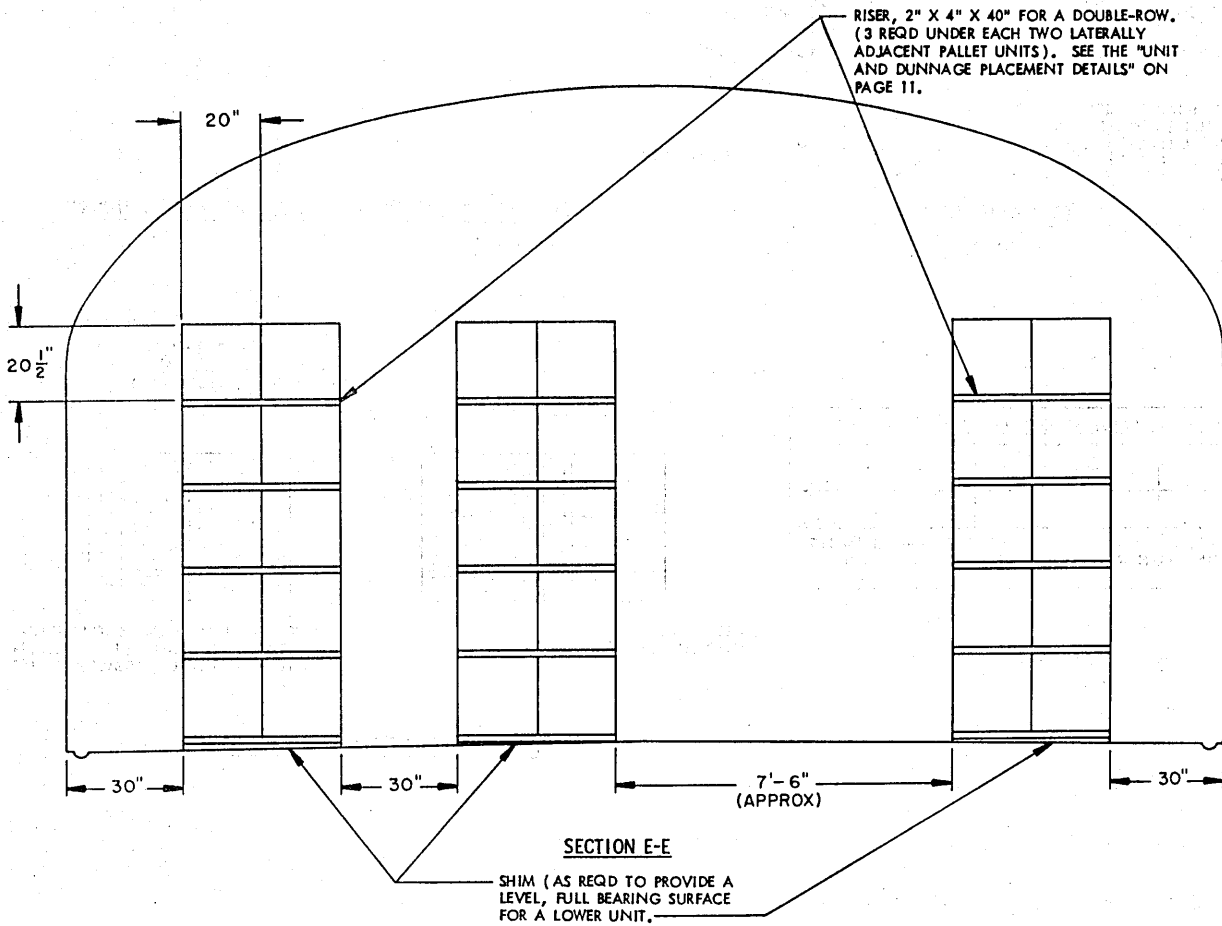


BUNDLING STRAP, 1-1/4" X .035" X 11'-6" LONG STEEL STRAPPING. (1 REQD TO ENCIRCLE TWO LATERALLY ADJACENT PALLET UNITS).

**UNIT AND DUNNAGE PLACEMENT DETAILS**



**PLAN VIEW**  
(80' STRADLEY)

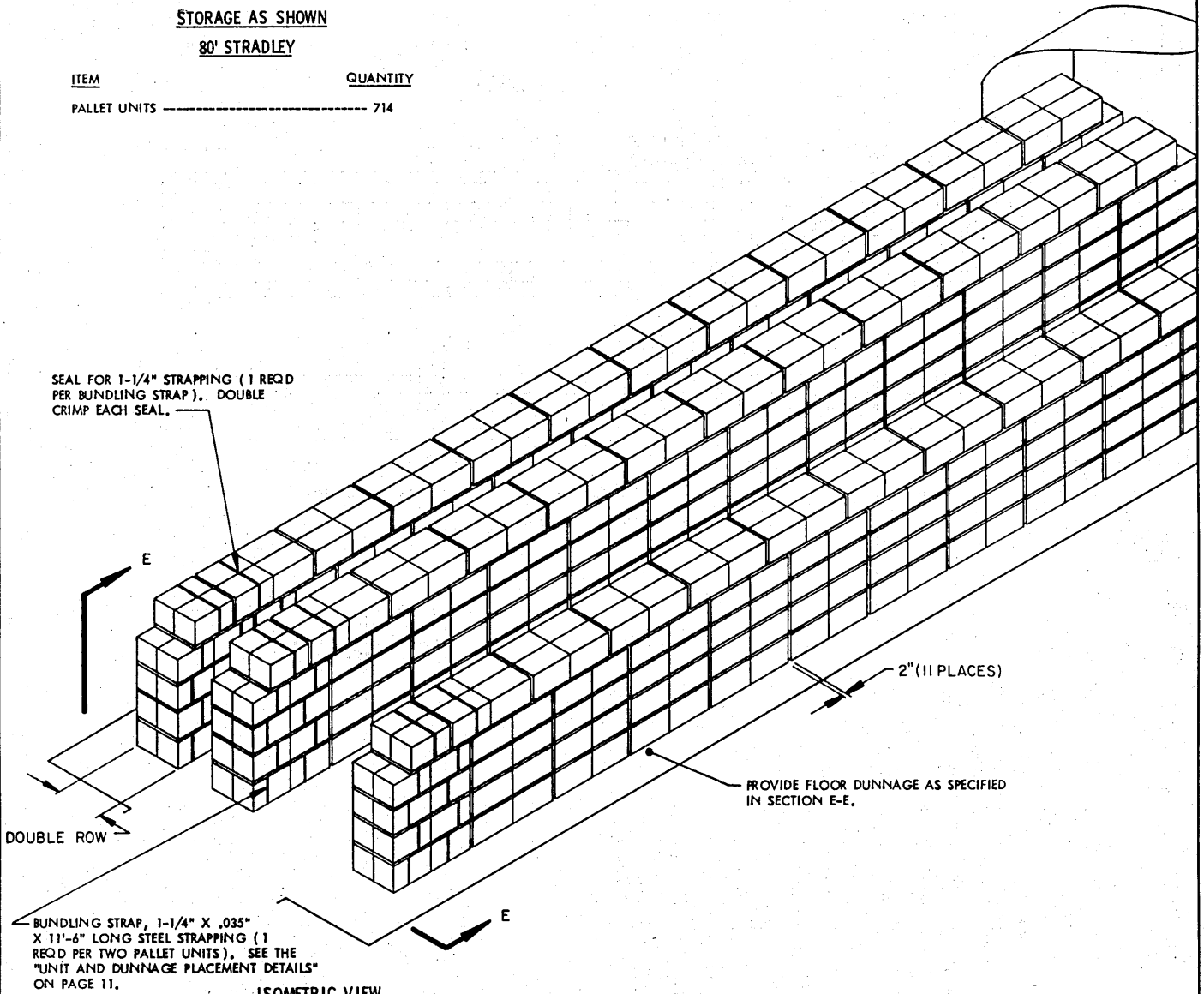


**SECTION E-E**

**STORAGE AS SHOWN**

**80' STRADLEY**

ITEM QUANTITY  
 PALLET UNITS ----- 714



SEAL FOR 1-1/4" STRAPPING (1 REQD PER BUNDLING STRAP). DOUBLE CRIMP EACH SEAL.

E

2" (11 PLACES)

PROVIDE FLOOR DUNNAGE AS SPECIFIED IN SECTION E-E.

DOUBLE ROW

BUNDLING STRAP, 1-1/4" X .035" X 11'-6" LONG STEEL STRAPPING (1 REQD PER TWO PALLET UNITS). SEE THE "UNIT AND DUNNAGE PLACEMENT DETAILS" ON PAGE 11.

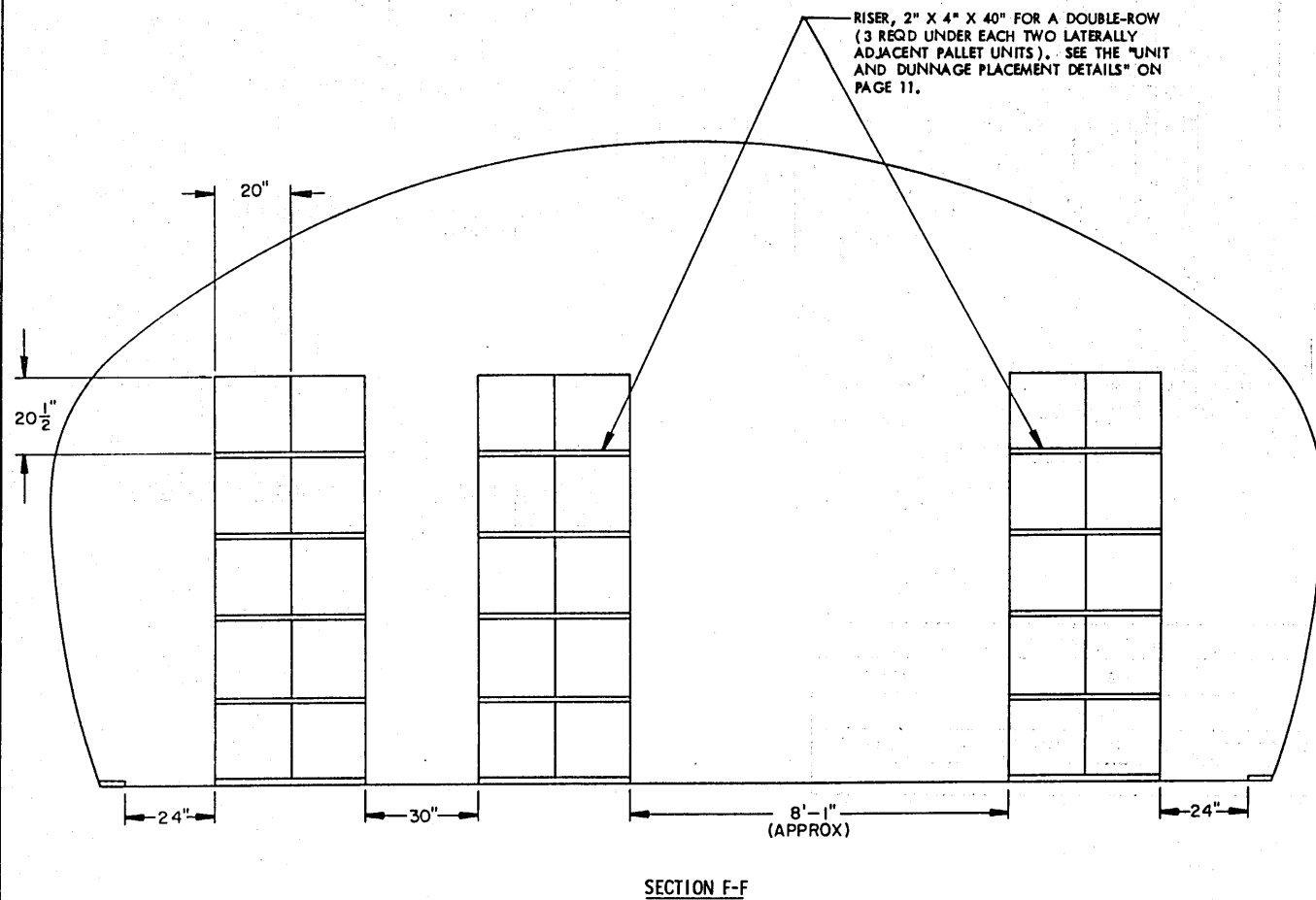
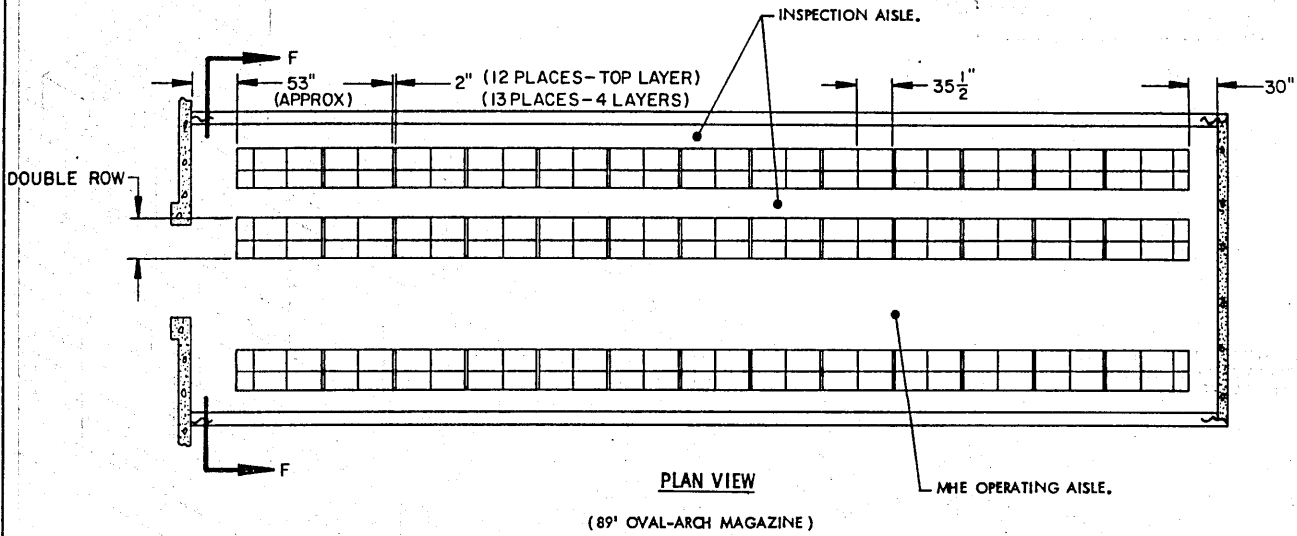
E

**ISOMETRIC VIEW**

(80' STRADLEY)

SEE "GENERAL NOTES", AND "MATERIAL SPECIFICATIONS" ON PAGE 2.

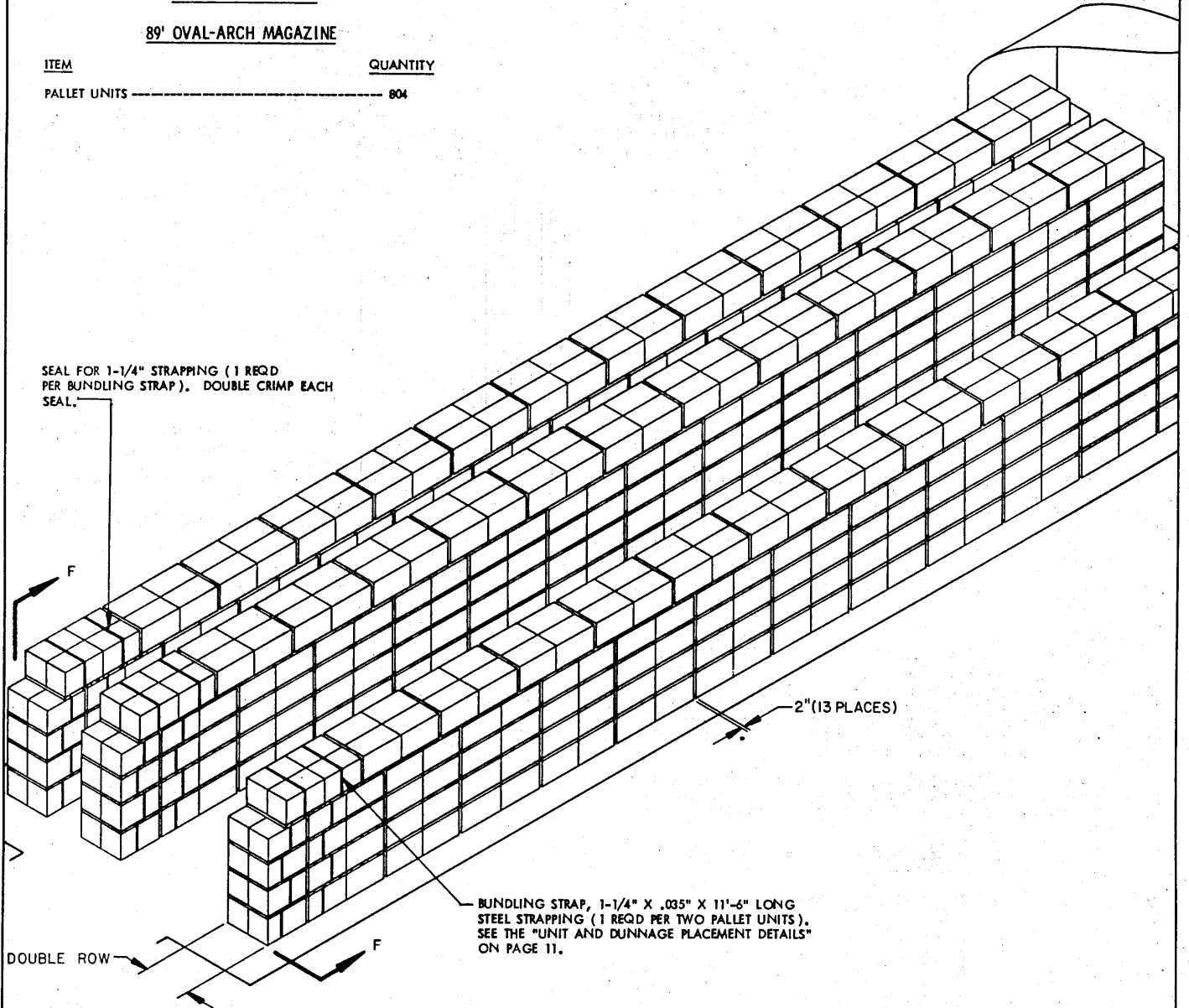
BILL OF MATERIAL ( PER 2 PALLET UNITS )		
LUMBER	LINEAR FEET	BOARD FEET
2" X 4"	10	7
STEEL STRAPPING, 1-1/4" X .035" --- 11'-6" REQD	---	1-3/4 LBS
SEAL FOR 1-1/4" STRAPPING	1 REQD	NIL



**STORAGE AS SHOWN**

**89' OVAL-ARCH MAGAZINE**

**ITEM** **QUANTITY**  
**PALLET UNITS** ----- **804**



SEAL FOR 1-1/4" STRAPPING (1 REQD PER BUNDLING STRAP). DOUBLE CRIMP EACH SEAL.

F

2" (13 PLACES)

BUNDLING STRAP, 1-1/4" X .035" X 11'-6" LONG STEEL STRAPPING (1 REQD PER TWO PALLET UNITS). SEE THE "UNIT AND DUNNAGE PLACEMENT DETAILS" ON PAGE 11.

DOUBLE ROW

F

**ISOMETRIC VIEW**

(89' OVAL-ARCH MAGAZINE)

SEE "GENERAL NOTES", AND "MATERIAL SPECIFICATIONS" ON PAGE 2.

BILL OF MATERIAL ( PER 2 PALLET UNITS )		
LUMBER	LINEAR FEET	BOARD FEET
2" X 4"	10	7
STEEL STRAPPING, 1-1/4" X .035" -- 11'-6" REQD	-----	1-3/4 LBS
SEAL FOR 1-1/4" STRAPPING	-----	1 REQD ----- NIL

