

# STORAGE IN 40', 60' & 80' IGL00, 80' STRADLEY, 89' OVAL-ARCH, AND STANDARD MAGAZINES OF TMU-28/B SPRAY TANK PACKED IN THE CNU-77/E23 AND/OR CNU-89/E CONTAINER

## INDEX

<u>ITEM</u>	<u>PAGE (S)</u>
GENERAL NOTES -----	3
STORAGE PROCEDURES FOR THE CNU-77/E23 CONTAINER	
IGLOO MAGAZINE -----	2-4
STRADLEY MAGAZINE -----	6, 7
OVAL-ARCH MAGAZINE -----	8, 9
STANDARD MAGAZINE -----	10, 11
STORAGE PROCEDURES FOR THE CNU-89/E CONTAINER	
IGLOO MAGAZINE -----	12-14
STRADLEY MAGAZINE -----	16, 17
ALTERNATIVE STRADLEY MAGAZINE -----	18, 19
OVAL-ARCH MAGAZINE -----	20, 21
STANDARD MAGAZINE -----	22, 23

REVISIONS				DRAFTSMAN <i>mm</i>	PROJ. ENG. <i>mmw/gmw</i>
1	AUG 76	<i>mmw/gmw</i>	<i>John of Byrd</i>	<i>mmw/gmw</i>	<i>John of Byrd</i>
				CHECKER <i>mmw/gmw</i>	LOG. ENGINE OFFICE <i>John of Byrd</i>
				APPROVED  <i>H H Benton</i>	
				U. S. ARMY ARMORIAL COMMAND	
				APPROVED BY ORDER OF COMMANDING GENERAL U. S. ARMY MATERIEL COMMAND	
				<i>A H Ehrig</i> USAMC AMMO CENTER	
				U. S. ARMY MATERIEL COMMAND	
				SEPTEMBER 1975	
				CLASS	DIVISION
				DRAWING	FILE
				19	48
				4505	CB 1-2-14-22J1

**DO NOT SCALE**

STORAGE AS SHOWN

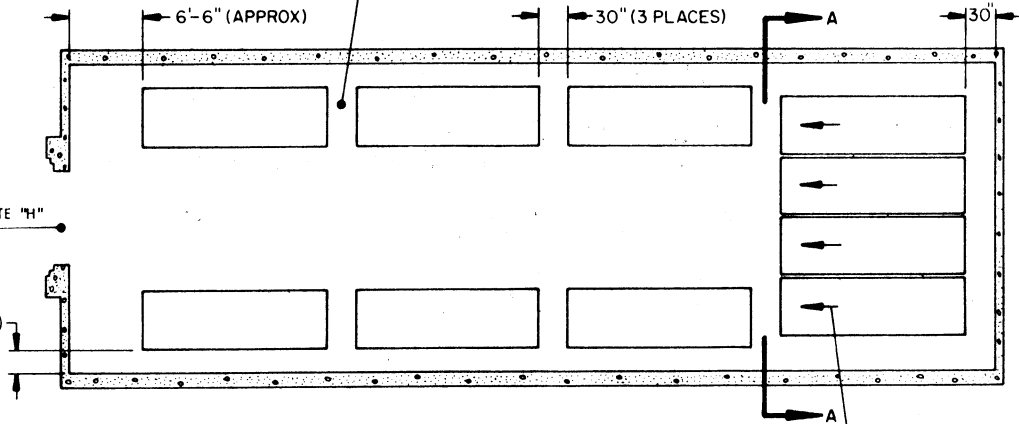
80' IGLOO

ITEM	QUANTITY
CNU-77/E CONTAINER	10

ACCESS AISLE. SEE GENERAL NOTE "C" ON PAGE 3.

SEE GENERAL NOTE "H" ON PAGE 3.

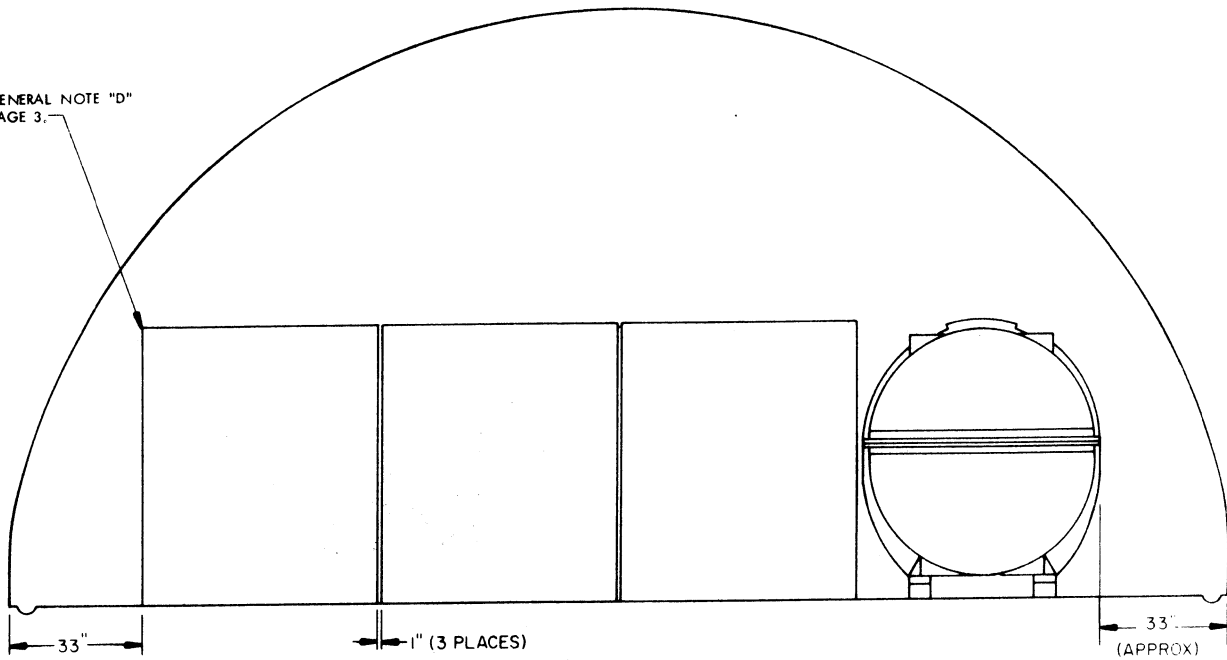
24" (2 PLACES)



PLAN VIEW  
(80' IGLOO)

INDICATES END OF CONTAINER WITH HUMIDITY INDICATOR. CONTAINERS SHOWN WITHOUT ARROWS MAY BE POSITIONED IN EITHER DIRECTION.

SEE GENERAL NOTE "D" ON PAGE 3.



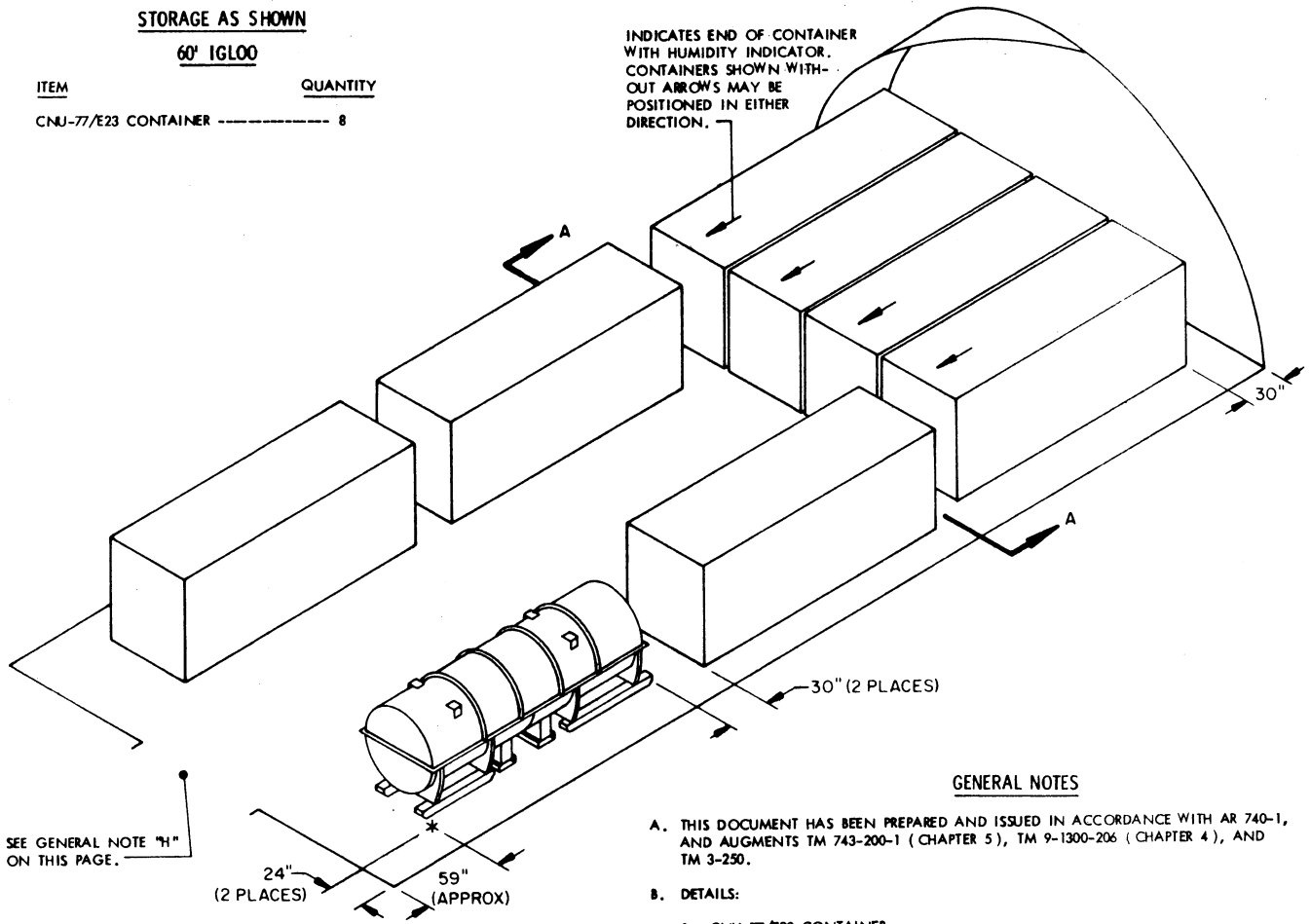
SECTION A-A

**STORAGE AS SHOWN**

**60' IGLOO**

ITEM	QUANTITY
CNU-77/E23 CONTAINER -----	8

INDICATES END OF CONTAINER WITH HUMIDITY INDICATOR. CONTAINERS SHOWN WITHOUT ARROWS MAY BE POSITIONED IN EITHER DIRECTION.



**ISOMETRIC VIEW**  
(60' IGLOO)

**(GENERAL NOTES CONTINUED)**

- K. THE STORAGE PROCEDURES DEPICTED FOR IGLOO MAGAZINES ARE ALSO APPLICABLE FOR STEEL ARCH MAGAZINES WHICH HAVE A SIMILAR CROSS SECTIONAL AREA.
- L. PROCEDURES DEPICTED ON PAGES 10, 11, AND 18 THRU 23 PROVIDE FOR STORAGE OF CONTAINERS IN A TWO-LAYER CONFIGURATION. USE OF THESE PROCEDURES IS DEPENDENT UPON THE AVAILABILITY OF SUITABLE MATERIAL HANDLING EQUIPMENT WHICH CAN STACK THESE CONTAINERS TWO-HIGH. THESE PROCEDURES CAN ALSO BE USED TO STORE CONTAINERS IN A ONE-HIGH CONFIGURATION.
- M. IF SUITABLE MATERIALS HANDLING EQUIPMENT (MHE) IS AVAILABLE WHICH WILL PERMIT PLACEMENT AND REMOVAL OPERATIONS TO BE CONDUCTED IN A CENTER AISLE WHICH IS MORE NARROW THAN THOSE SHOWN, IT IS PERMITTED TO PLACE AN ADDITIONAL ROW OF CONTAINERS ON ONE SIDE OF THE CENTER AISLE TO GAIN INCREASED STORAGE DENSITY. ALSO, FOR THOSE CONFIGURATIONS WHERE A ONE-LAYER STACK IS DEPICTED, IT IS PERMITTED TO STACK CONTAINERS IN A TWO-LAYER HIGH STACK, PROVIDED ALL OTHER REQUIREMENTS OF THIS DOCUMENT ARE COMPLIED WITH.
- N. **CAUTION:** CONTAINERS WILL NOT BE STACKED MORE THAN TWO HIGH.

**REVISIONS**

REVISION NO. 1, DATED AUGUST 1976, CONSISTS OF:

- 1. UPDATING THE GENERAL NOTES.
- 2. INCLUDING PROCEDURES FOR STANDARD AND OVAL-ARCH MAGAZINES.
- 3. CHANGING THE FILE NUMBER FROM C81-14J1 TO C81-2-14-22J1.

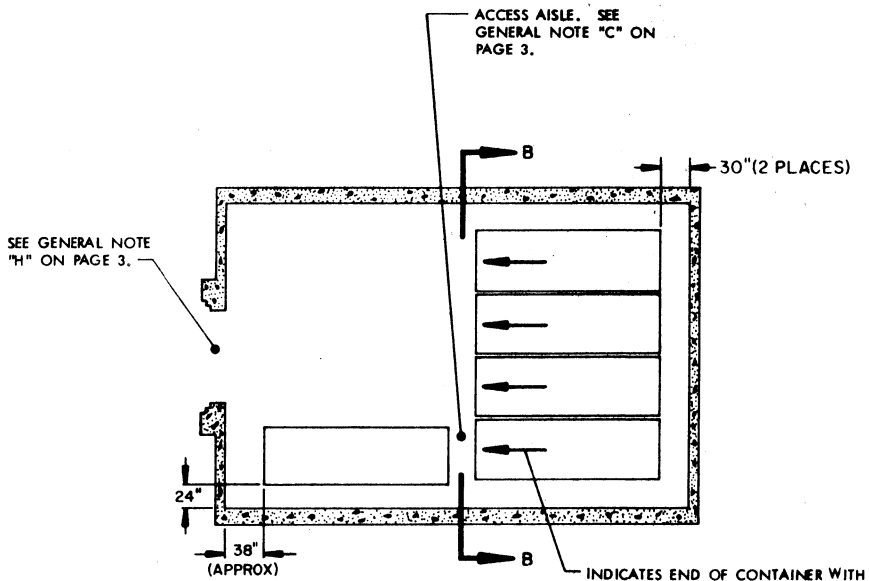
**GENERAL NOTES**

- A. THIS DOCUMENT HAS BEEN PREPARED AND ISSUED IN ACCORDANCE WITH AR 740-1, AND AUGMENTS TM 743-200-1 (CHAPTER 5), TM 9-1300-206 (CHAPTER 4), AND TM 3-250.
- B. DETAILS:
  - 1. CNU-77/E23 CONTAINER:  
DIMENSIONS --- 193" LONG X 62" WIDE X 73" HIGH.  
WEIGHT ----- 6,100 POUNDS (APPROX).
  - 2. CNU-89/E CONTAINER:  
DIMENSIONS --- 204" LONG X 43-3/8" WIDE X 45-1/2" HIGH.  
WEIGHT ----- 6,000 POUNDS (APPROX).
- C. AISLE DIMENSIONS SHOWN IN THIS DRAWING MAY BE ADJUSTED TO SUIT LOCAL CONDITIONS AND/OR AVAILABLE MATERIALS HANDLING EQUIPMENT; HOWEVER, THIRTY-INCH (30") MINIMUM ACCESS AISLES WILL BE PROVIDED, AS SHOWN, UNLESS OTHERWISE INDICATED, TO FACILITATE INSPECTION.
- D. STORED CONTAINERS MUST NOT CONTACT THE WALL OF A MAGAZINE. TO PROVIDE FOR THIS MANDATORY CLEARANCE REQUIREMENT, UNITS MAY BE ELIMINATED FROM THE DEPICTED STORAGE PATTERN AS NECESSARY.
- E. THE MAXIMUM FLOOR LOAD FOR A MAGAZINE, AS PRESCRIBED BY LOCAL STANDARDS, WILL NOT BE EXCEEDED.
- F. THE STORAGE PROCEDURES DEPICTED HEREIN FOR SPECIFIC TYPES OF MAGAZINES MAY ALSO BE UTILIZED TO STORE CONTAINERS IN OTHER TYPES OF APPROVED MAGAZINES. MINOR ADJUSTMENTS MAY BE MADE TO FACILITATE STORAGE IN OTHER TYPES OF MAGAZINES, HOWEVER, THE BASIC PRINCIPLES AS DEPICTED HEREIN WILL BE COMPLIED WITH.
- G. THE MAGAZINE MUST COMPLY WITH ALL REQUIREMENTS AND BE APPROVED FOR THE STORAGE OF CHEMICAL ITEMS.
- H. STORAGE OF THE CNU-77/E23 CONTAINER REQUIRES UTILIZATION OF A MAGAZINE WHICH HAS DOUBLE DOORS, OR HAS DOORS WHICH ARE OTHERWISE ADEQUATELY WIDE TO PERMIT PASSAGE OF THE 62" WIDE CONTAINER.
- J. OTHER COMPATIBLE ITEMS MAY BE STORED IN A MAGAZINE WHICH IS PARTIALLY FILLED WITH THE DESIGNATED ITEM.

(GENERAL NOTES CONTINUED AT LEFT)

**STORAGE AS SHOWN**

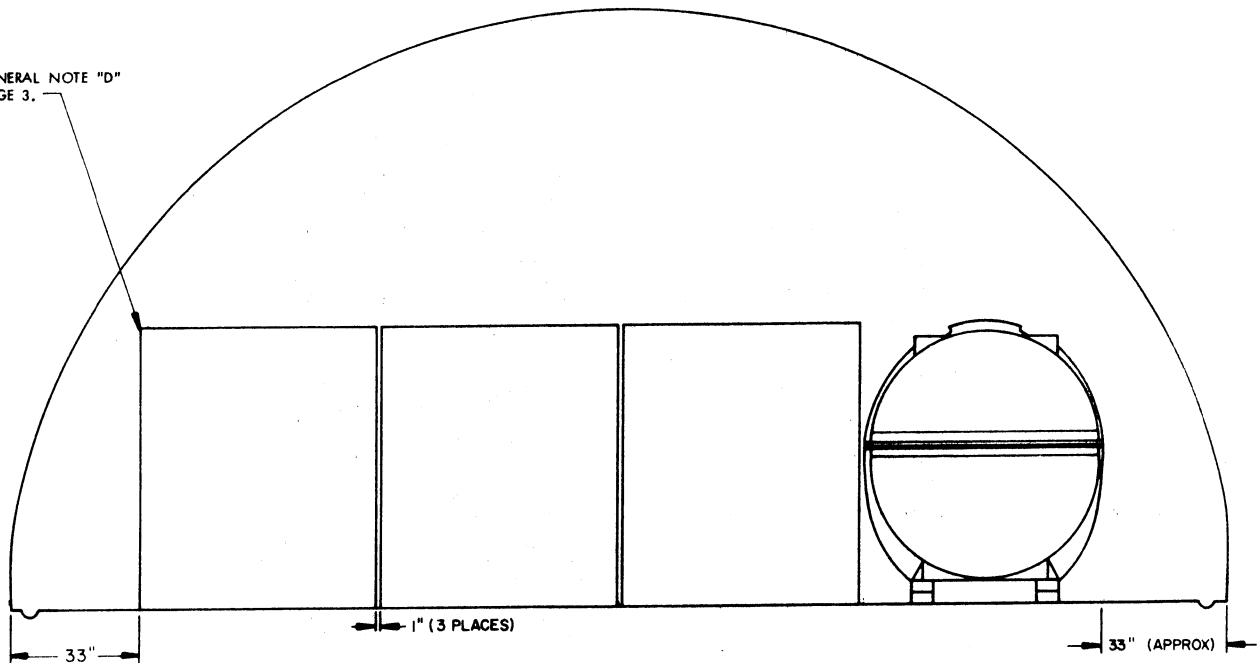
ITEM	40' IGLOO	QUANTITY
CNU-77/E23 CONTAINER	-----	5



SEE GENERAL NOTE "H" ON PAGE 3.

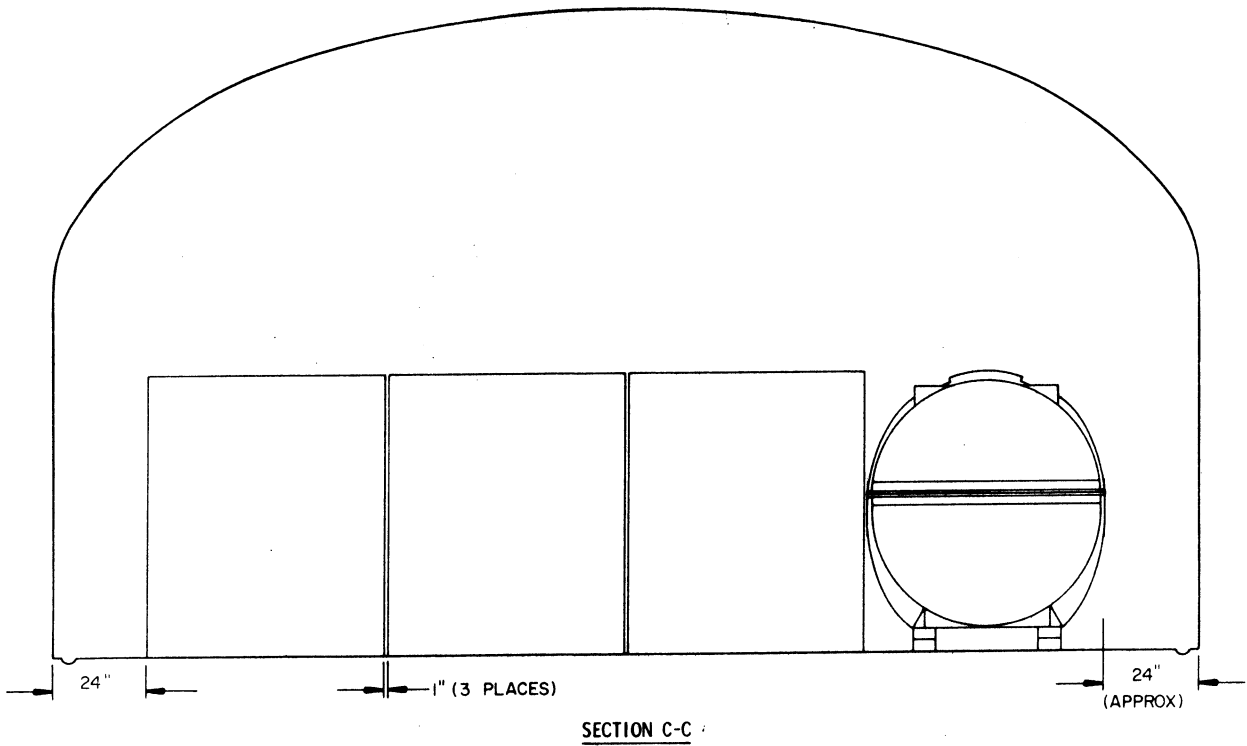
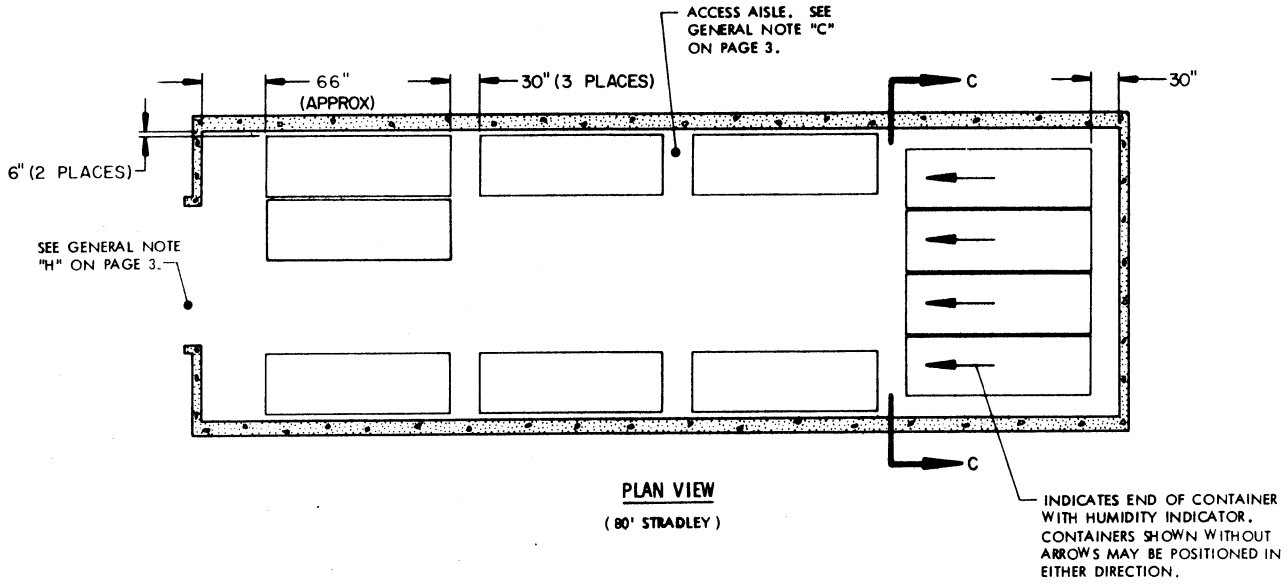
**PLAN VIEW**  
(40' IGLOO)

SEE GENERAL NOTE "D" ON PAGE 3.



**SECTION B-B**

THIS PAGE INTENTIONALLY LEFT BLANK.



**STRADLEY STORAGE PROCEDURES FOR CNU-77/E23 CONTAINER**

STORAGE AS SHOWN

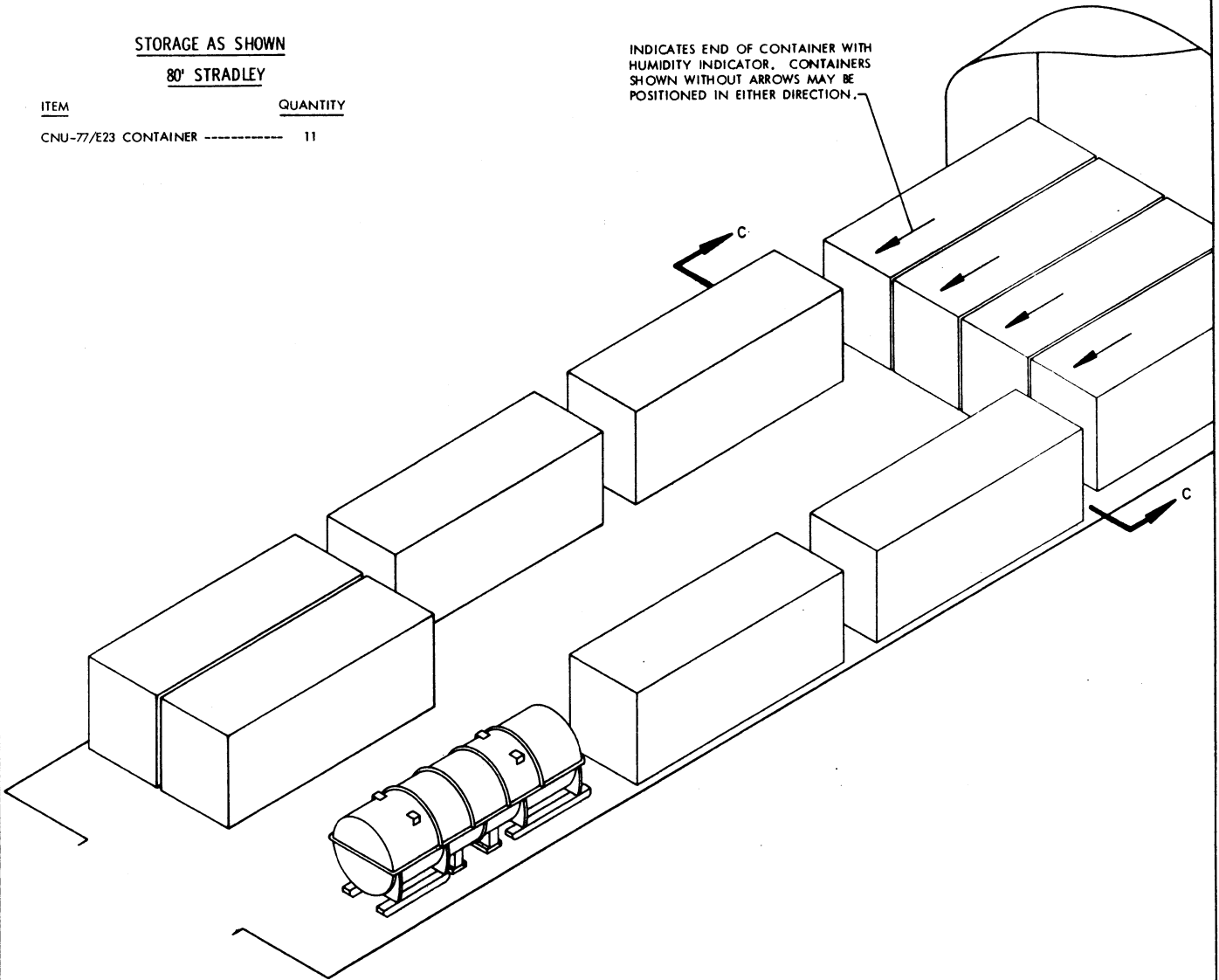
80' STRADLEY

ITEM

QUANTITY

CNU-77/E23 CONTAINER ----- 11

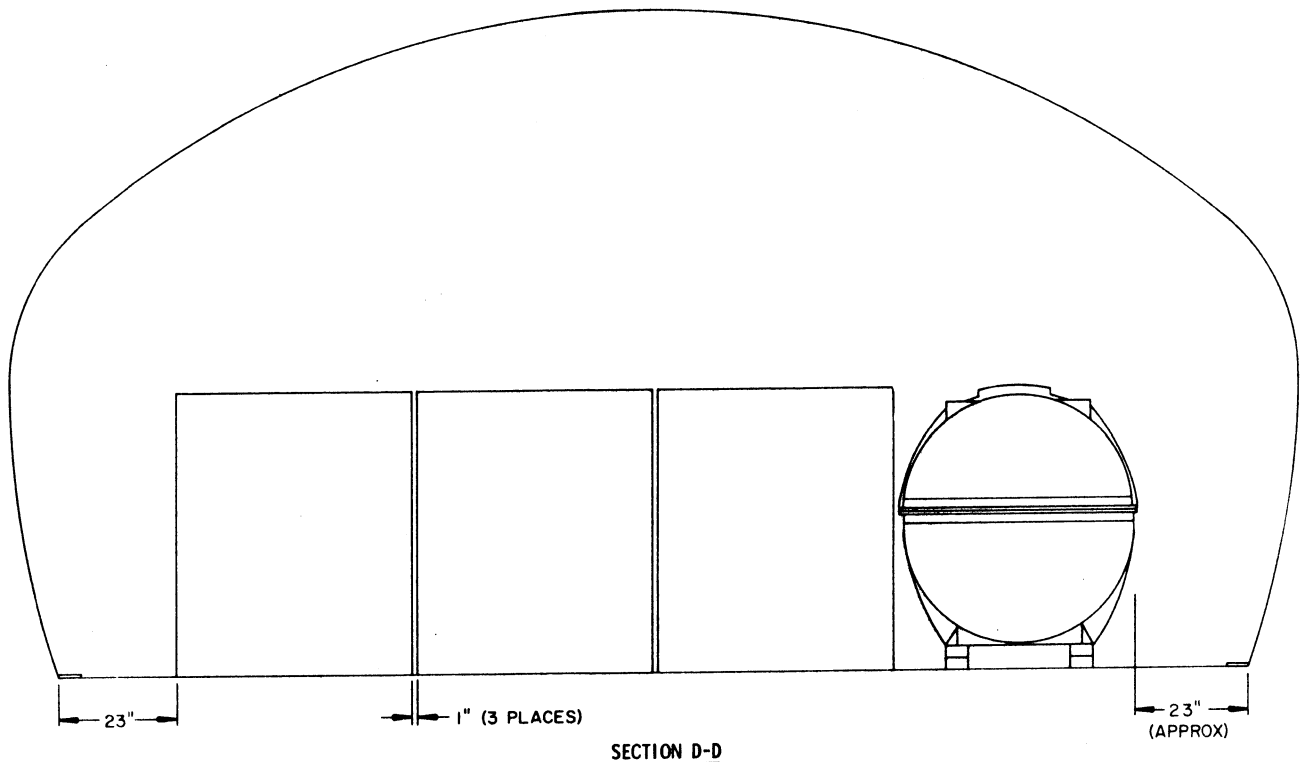
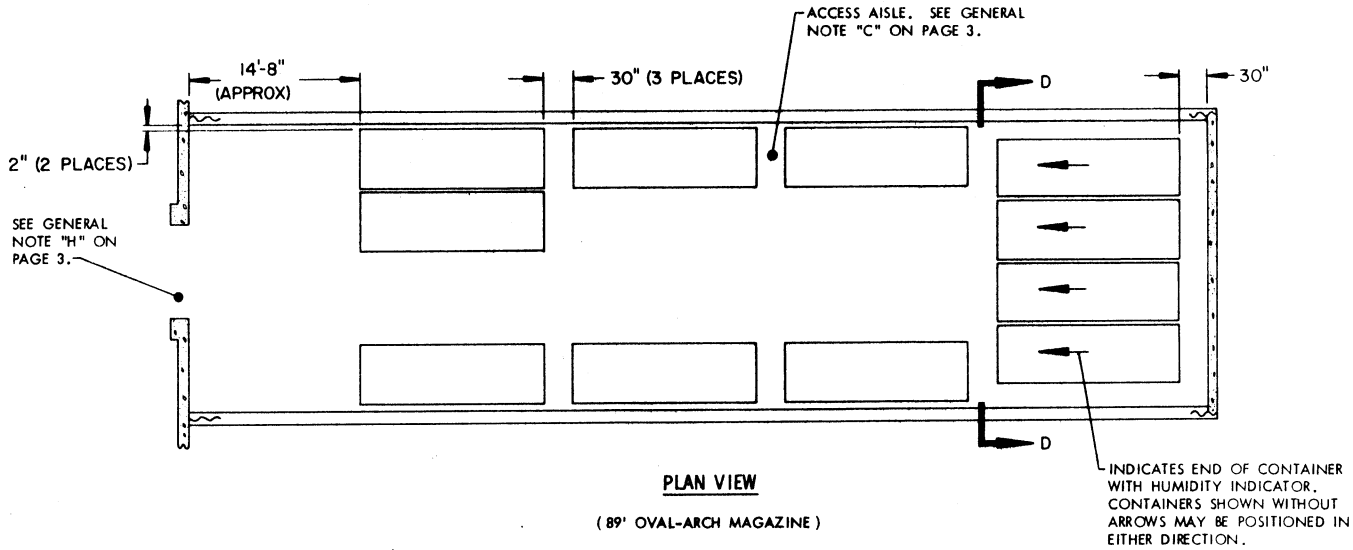
INDICATES END OF CONTAINER WITH HUMIDITY INDICATOR. CONTAINERS SHOWN WITHOUT ARROWS MAY BE POSITIONED IN EITHER DIRECTION.



ISOMETRIC VIEW

( 80' STRADLEY )

SEE GENERAL NOTES ON PAGE 3.



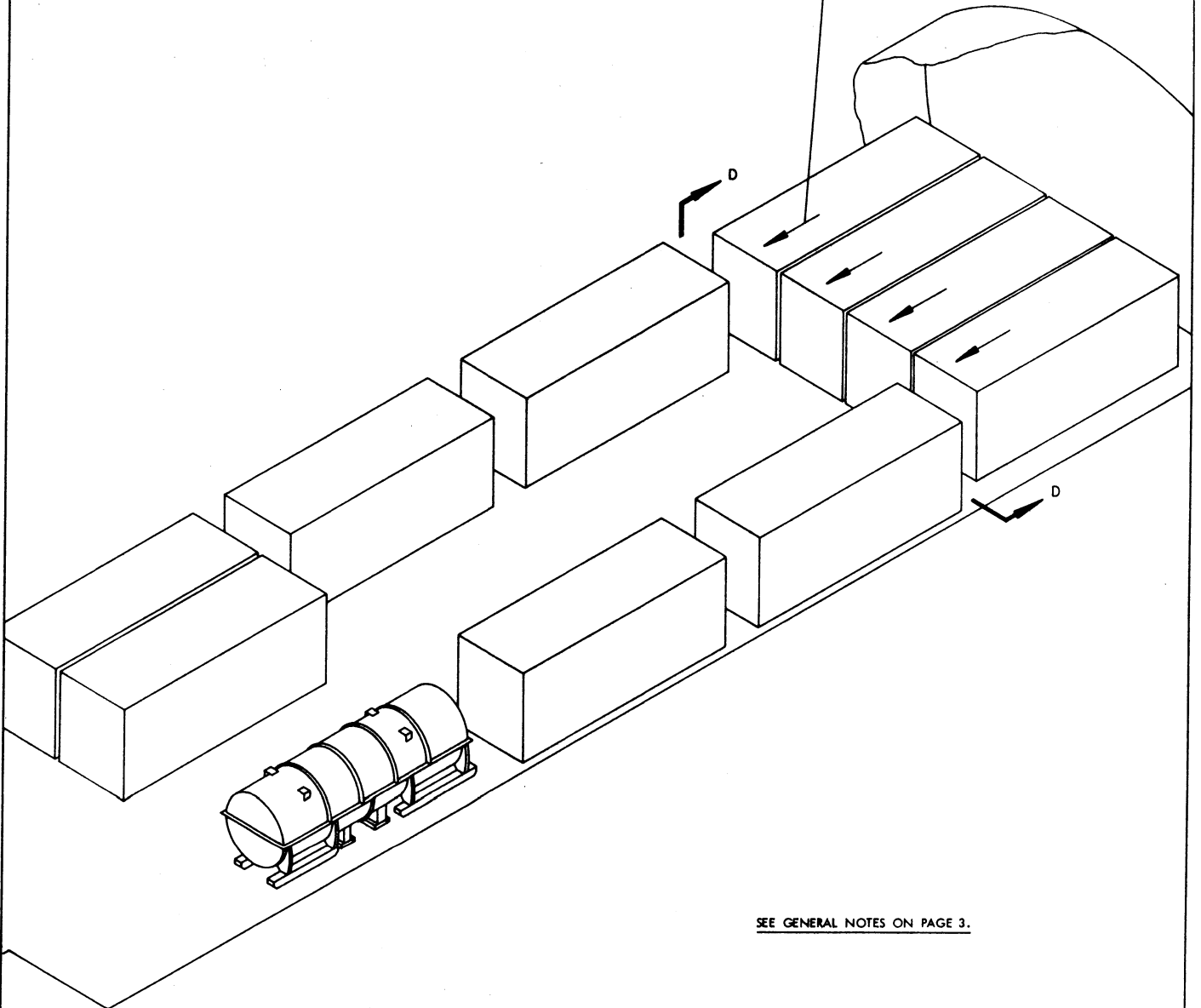


**STORAGE AS SHOWN**

**89' OVAL-ARCH MAGAZINE**

<u>ITEM</u>	<u>QUANTITY</u>
CNU-77/E23 CONTAINER -----	11

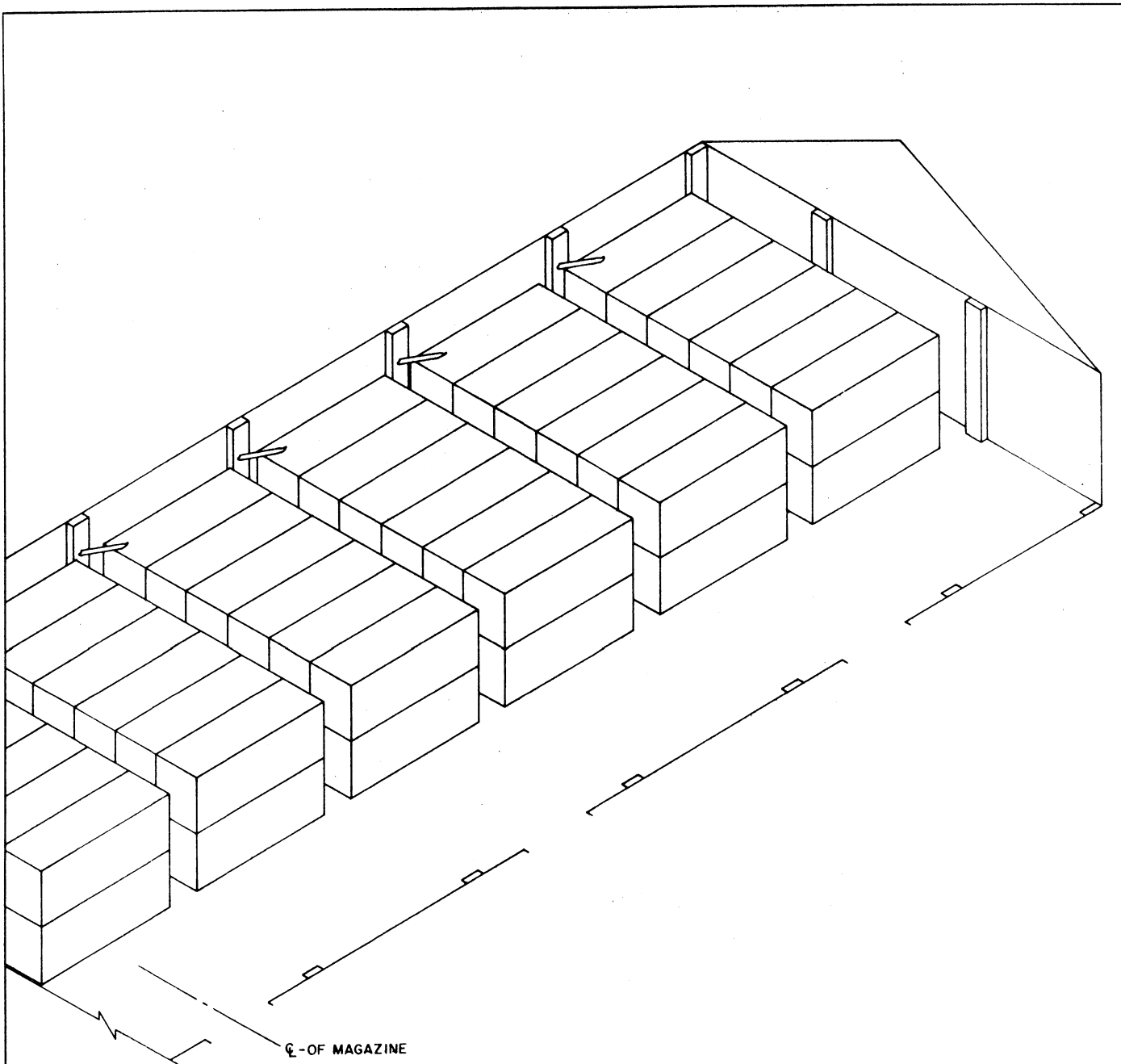
INDICATES END OF CONTAINER WITH HUMIDITY INDICATOR. CONTAINERS SHOWN WITHOUT ARROWS MAY BE POSITIONED IN EITHER DIRECTION.



SEE GENERAL NOTES ON PAGE 3.

**ISOMETRIC VIEW**

( 89' OVAL-ARCH MAGAZINE )

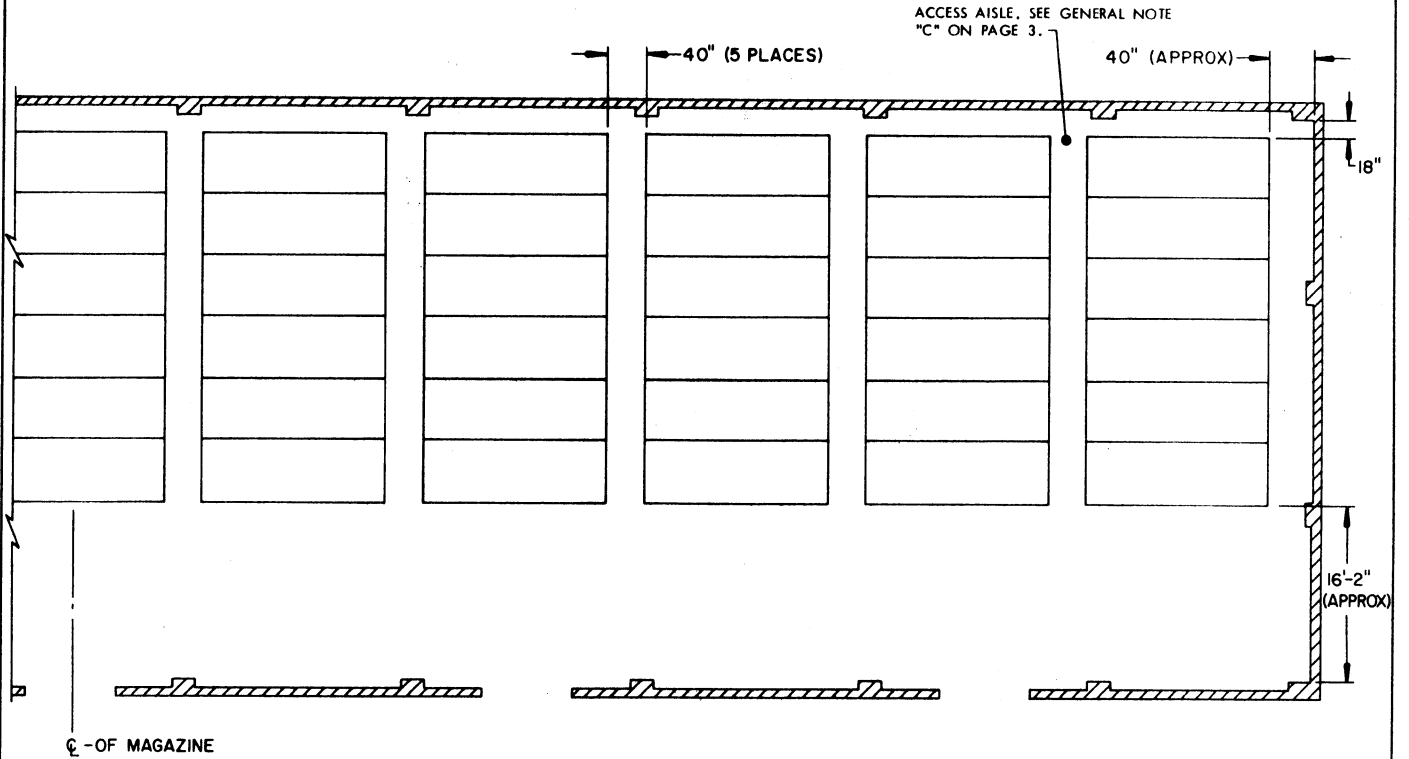


**ISOMETRIC VIEW**  
ONE-HALF OF A STANDARD MAGAZINE  
SHOWN.

STORAGE AS SHOWN

ONE-HALF OF A STANDARD MAGAZINE

<u>ITEM</u>	<u>QUANTITY</u>
CNU-77/E23 CONTAINER -----	66



PLAN VIEW

ONE-HALF OF A STANDARD MAGAZINE SHOWN.

SEE GENERAL NOTES ON PAGE 3.

**STORAGE AS SHOWN**

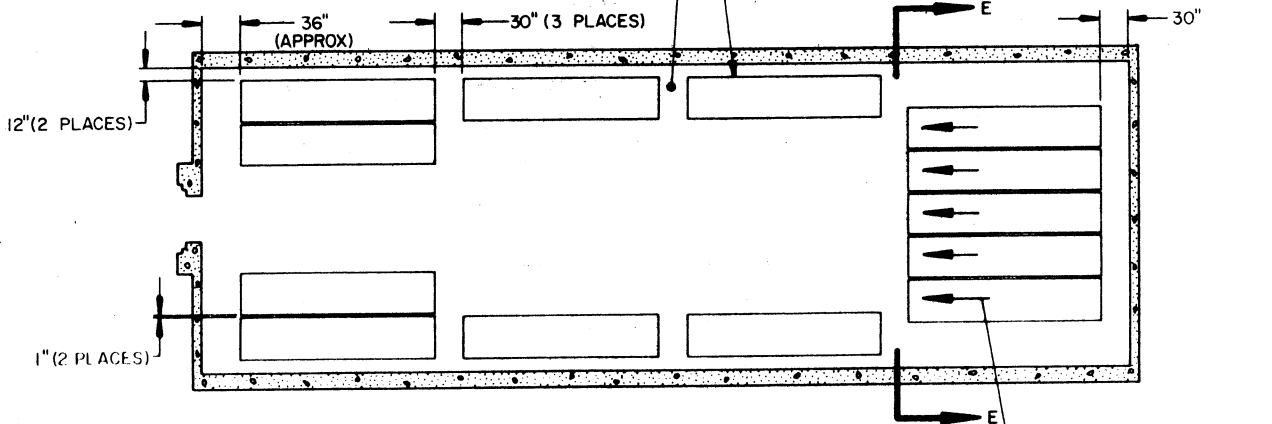
**80' IGLOO**

QUANTITY

ITEM

ACCESS AISLE. SEE GENERAL NOTE "C" ON PAGE 3. CNU-89/E CONTAINER ----- 13

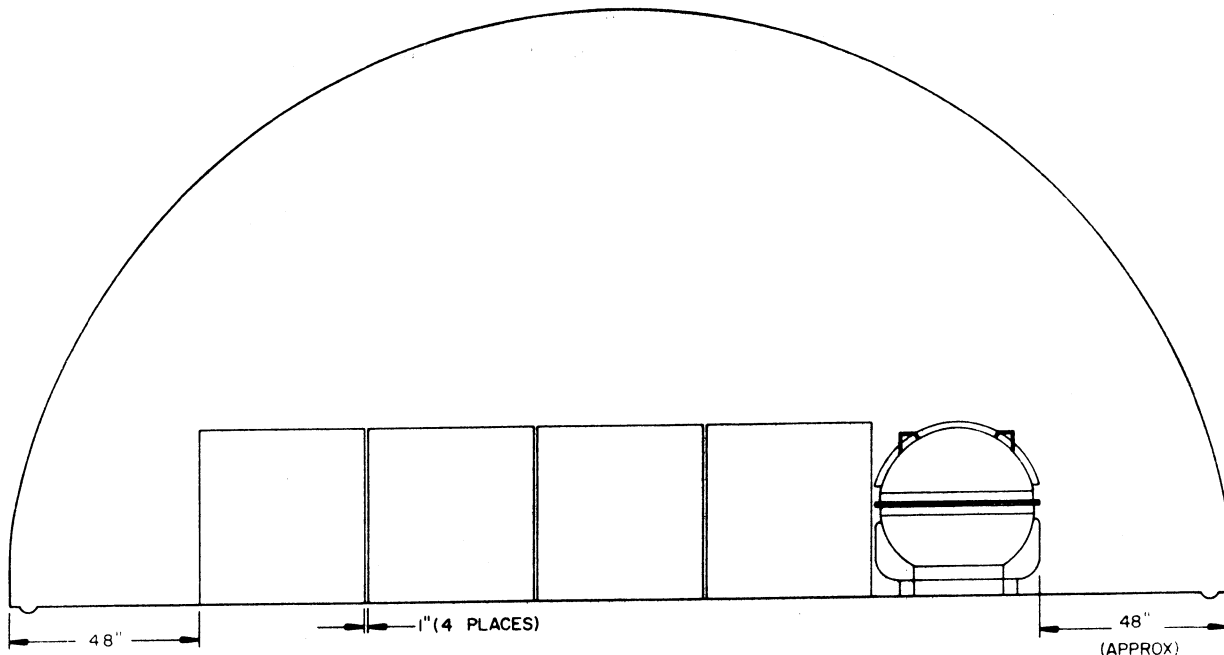
SEE GENERAL NOTE "D" ON PAGE 3.



**PLAN VIEW**

(80' IGLOO)

INDICATES END OF CONTAINER WITH HUMIDITY INDICATOR. CONTAINERS SHOWN WITHOUT ARROWS MAY BE POSITIONED IN EITHER DIRECTION.

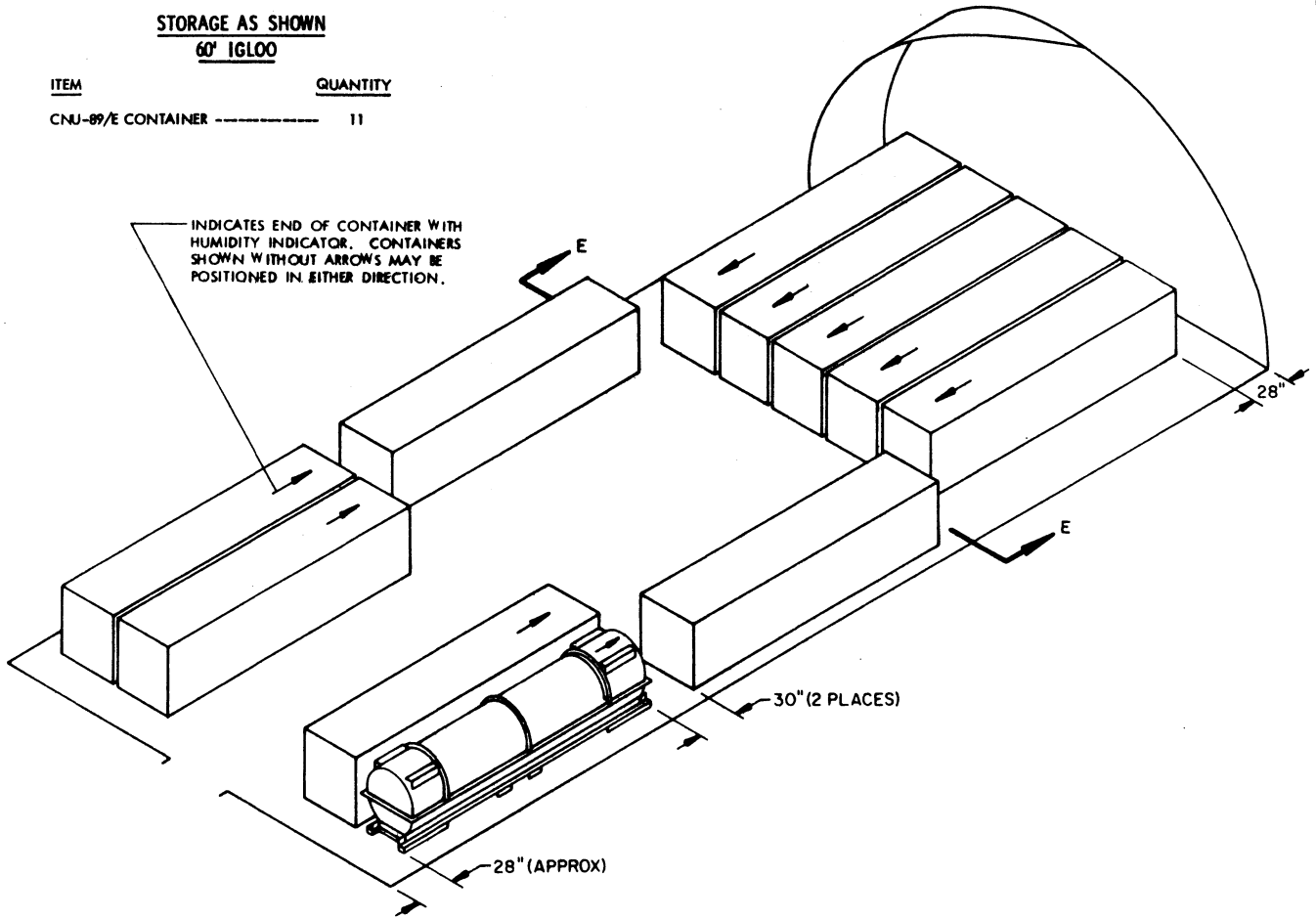


**SECTION E-E**

(APPROX)

**STORAGE AS SHOWN**  
**60' IGLOO**

ITEM	QUANTITY
CNU-89/E CONTAINER -----	11

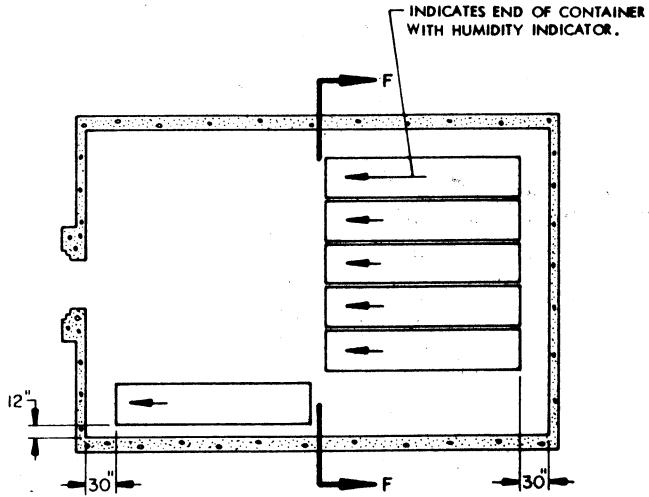


**ISOMETRIC VIEW**  
 (60' IGLOO)

SEE GENERAL NOTES ON PAGE 3.

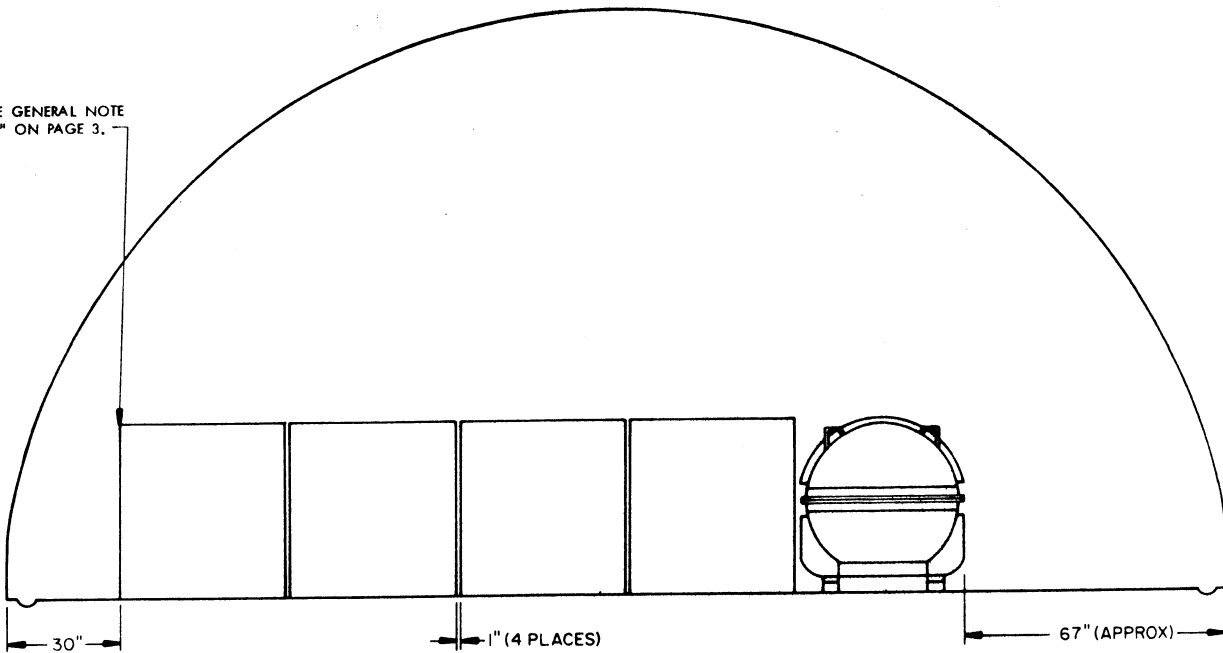
STORAGE AS SHOWN  
40' IGLOO

ITEM	QUANTITY
CNU-89/E CONTAINER	6



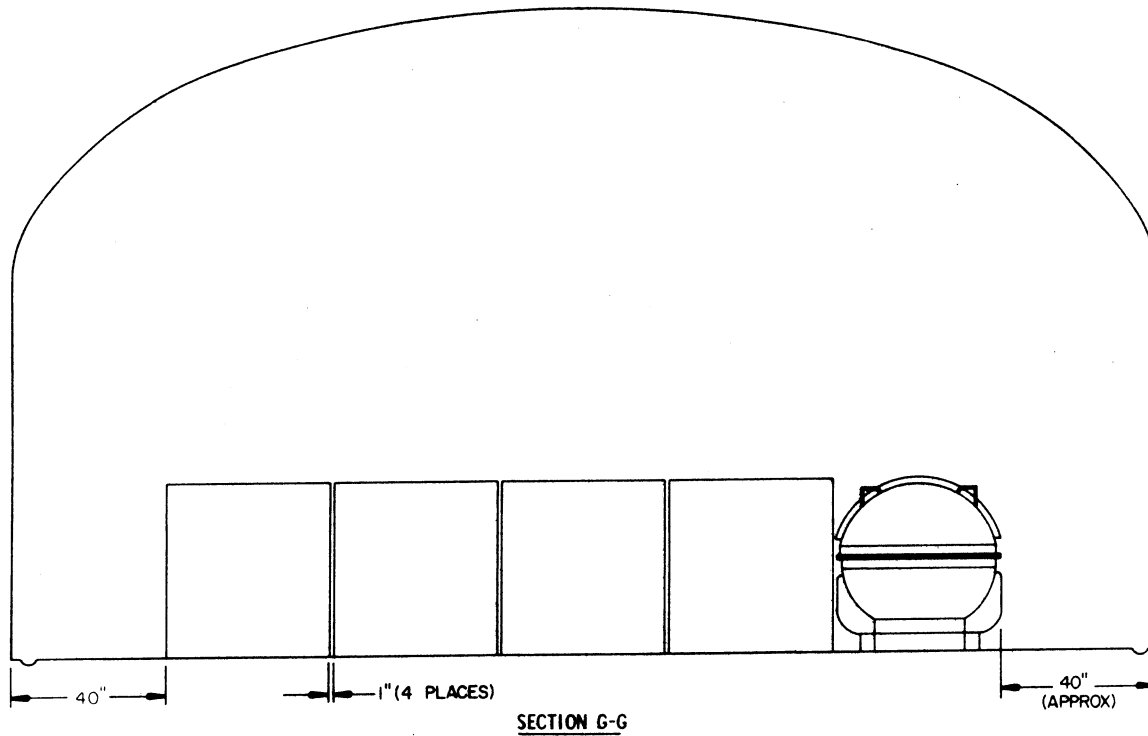
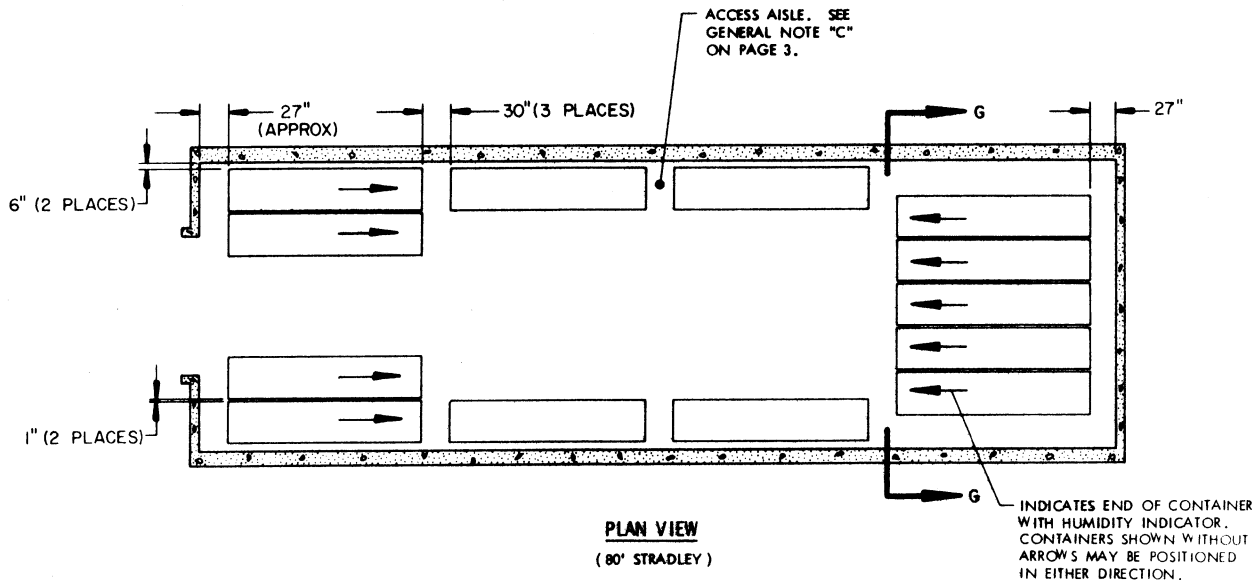
PLAN VIEW  
(40' IGLOO)

SEE GENERAL NOTE  
"D" ON PAGE 3.



SECTION F-F

THIS PAGE INTENTIONALLY LEFT BLANK.



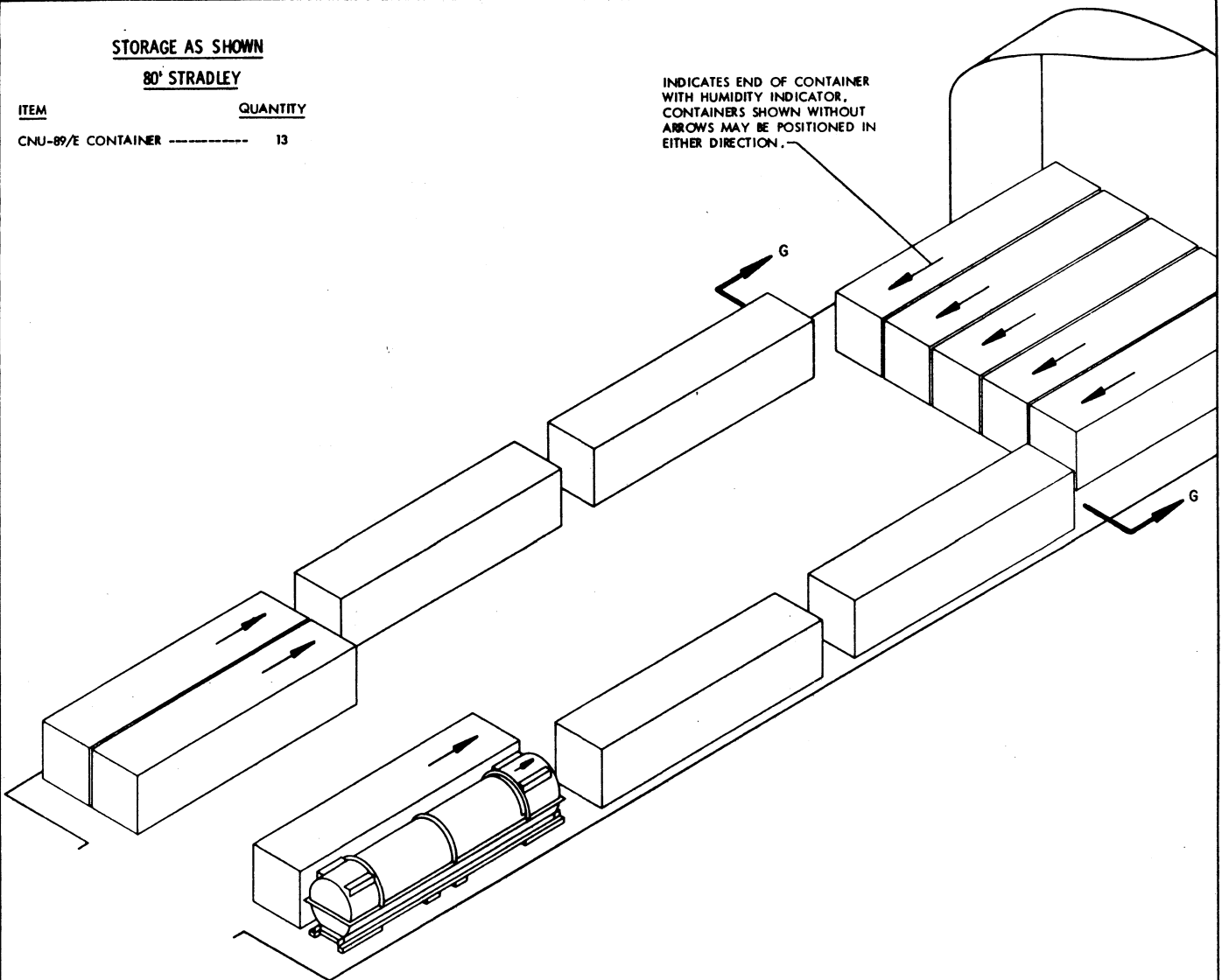


STORAGE AS SHOWN

80' STRADLEY

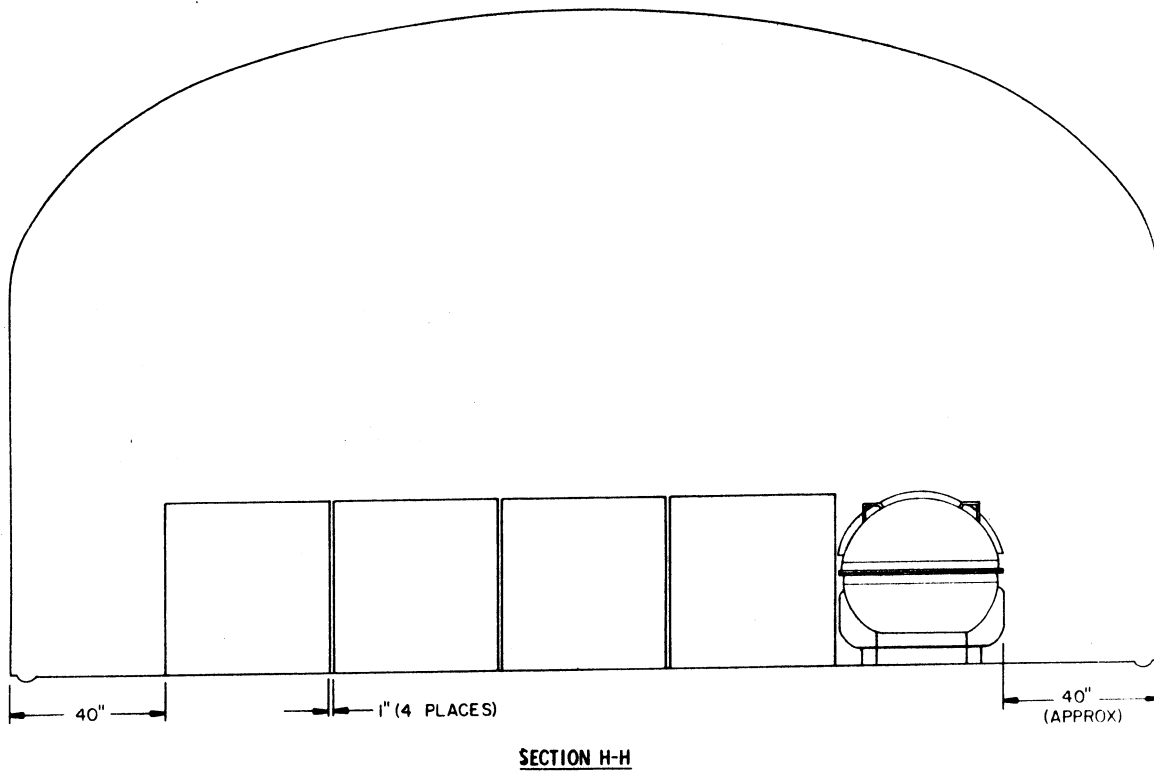
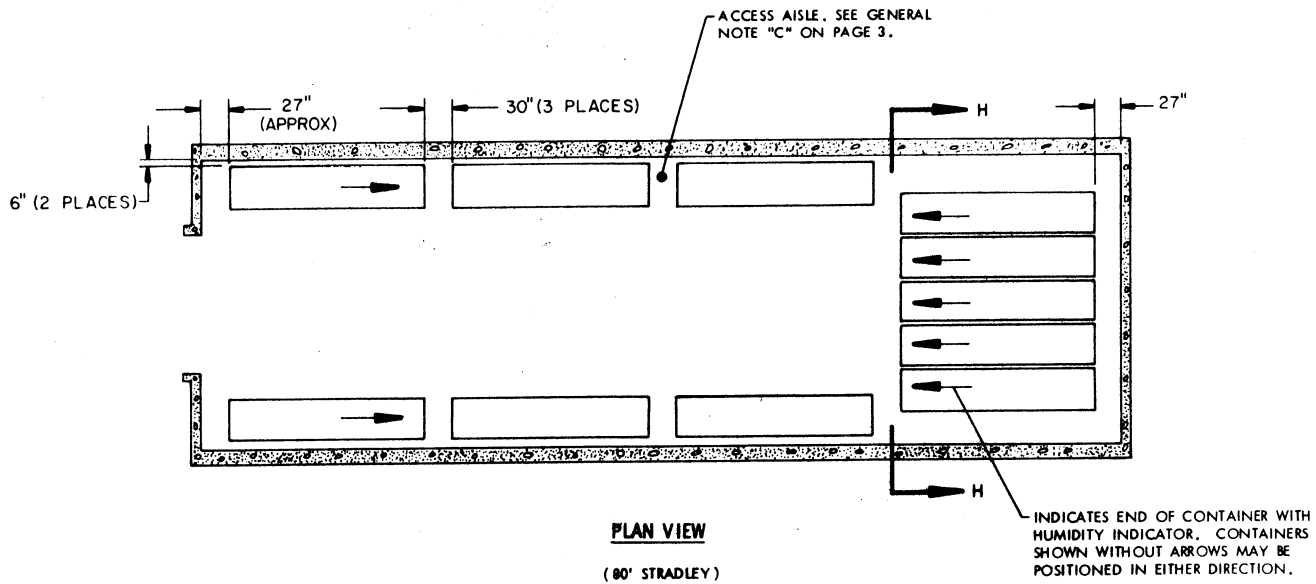
<u>ITEM</u>	<u>QUANTITY</u>
CNU-89/E CONTAINER -----	13

INDICATES END OF CONTAINER WITH HUMIDITY INDICATOR. CONTAINERS SHOWN WITHOUT ARROWS MAY BE POSITIONED IN EITHER DIRECTION.



ISOMETRIC VIEW  
(80' STRADLEY)

SEE GENERAL NOTES ON PAGE 3.

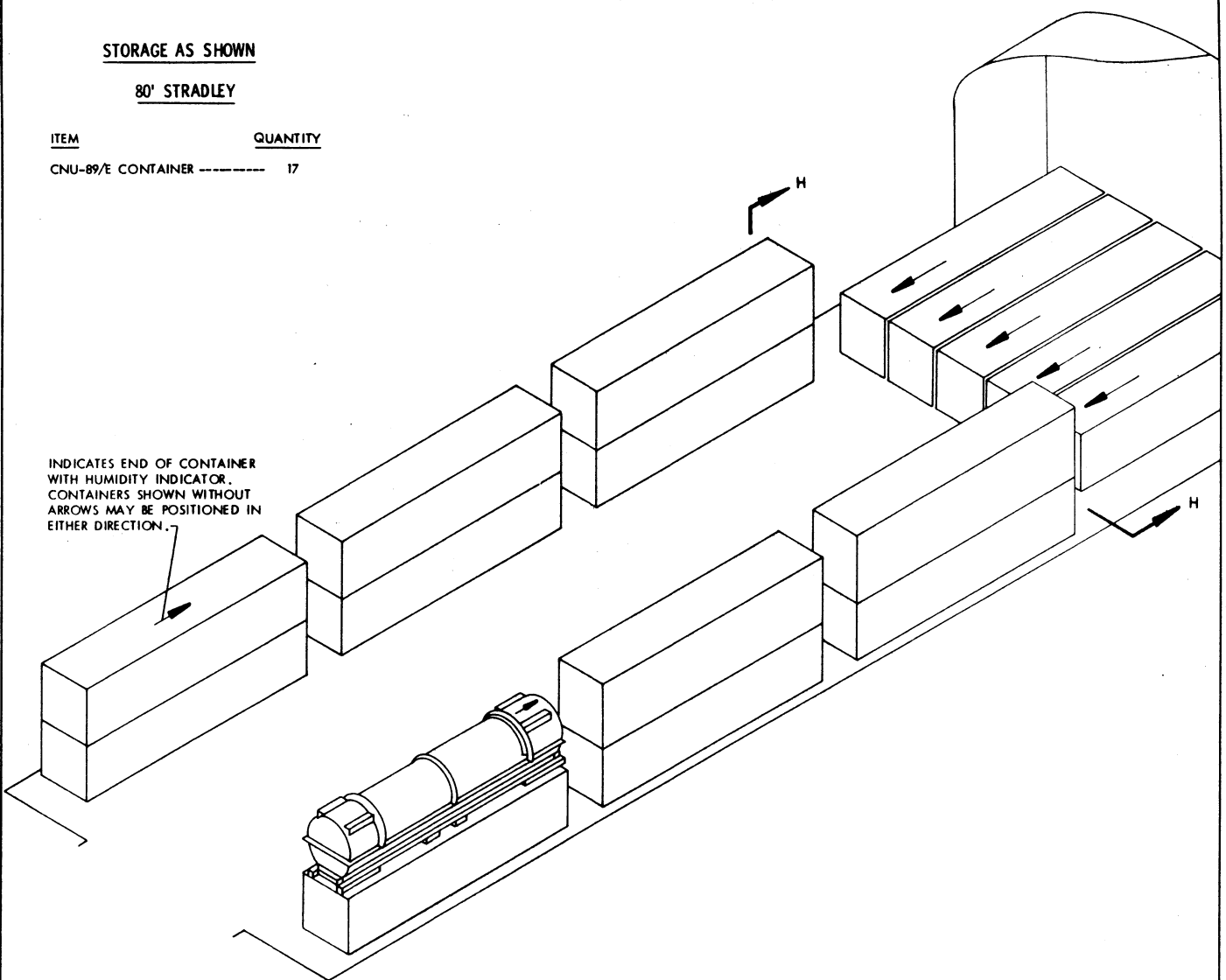


STORAGE AS SHOWN

80' STRADLEY

<u>ITEM</u>	<u>QUANTITY</u>
CNU-89/E CONTAINER -----	17

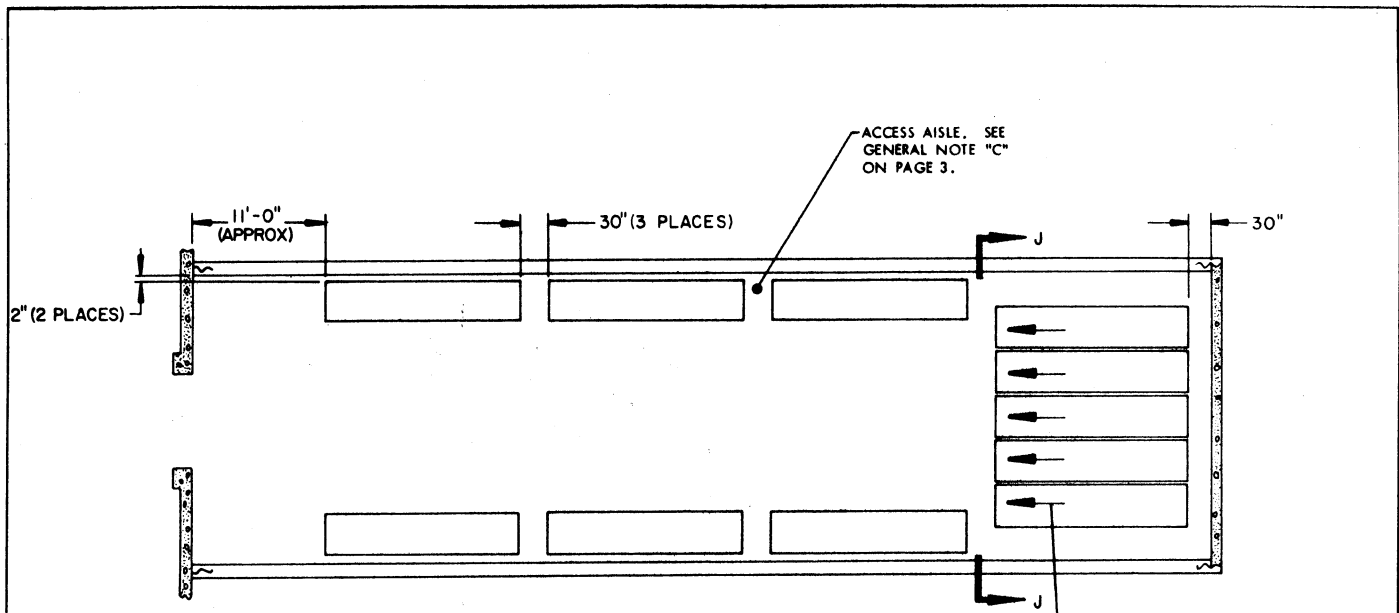
INDICATES END OF CONTAINER WITH HUMIDITY INDICATOR. CONTAINERS SHOWN WITHOUT ARROWS MAY BE POSITIONED IN EITHER DIRECTION.



ISOMETRIC VIEW

( 80' STRADLEY )

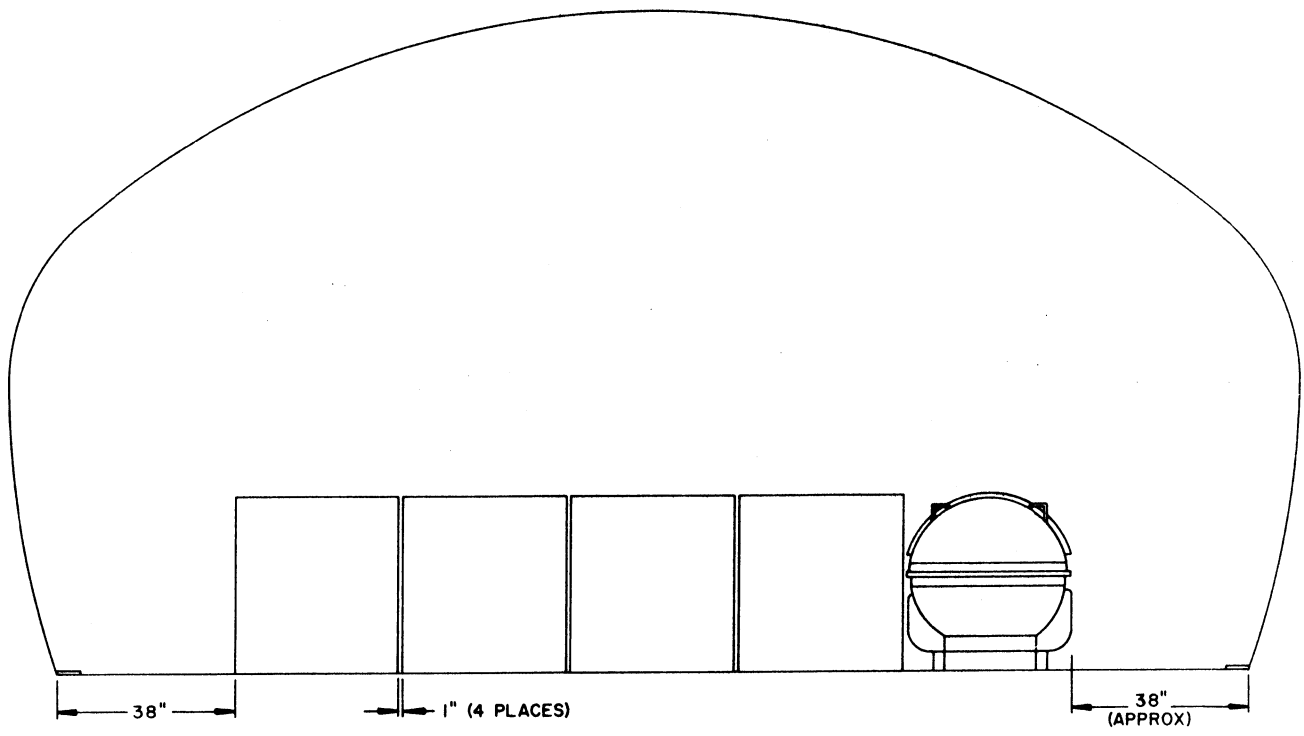
SEE GENERAL NOTES ON PAGE 3.



**PLAN VIEW**

(89' OVAL-ARCH MAGAZINE)

INDICATES END OF CONTAINER WITH HUMIDITY INDICATOR. CONTAINERS SHOWN WITHOUT ARROWS MAY BE POSITIONED IN EITHER DIRECTION.



**SECTION J-J**

**OVAl-ARCH MAGAZINE STORAGE PROCEDURES FOR CNU-89E CONTAINER**

**STORAGE AS SHOWN**

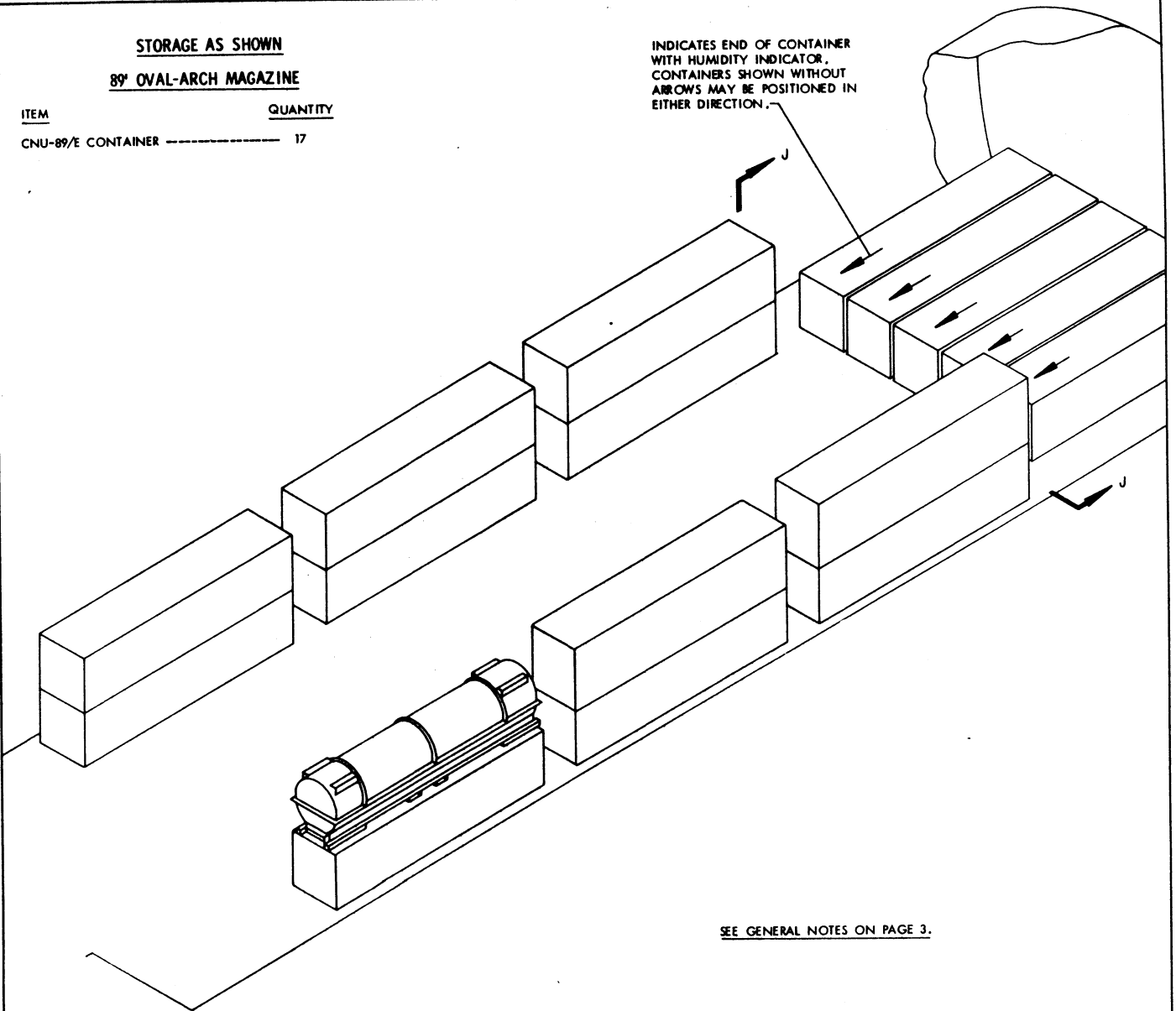
**89' OVAL-ARCH MAGAZINE**

ITEM

QUANTITY

CNU-89/E CONTAINER ----- 17

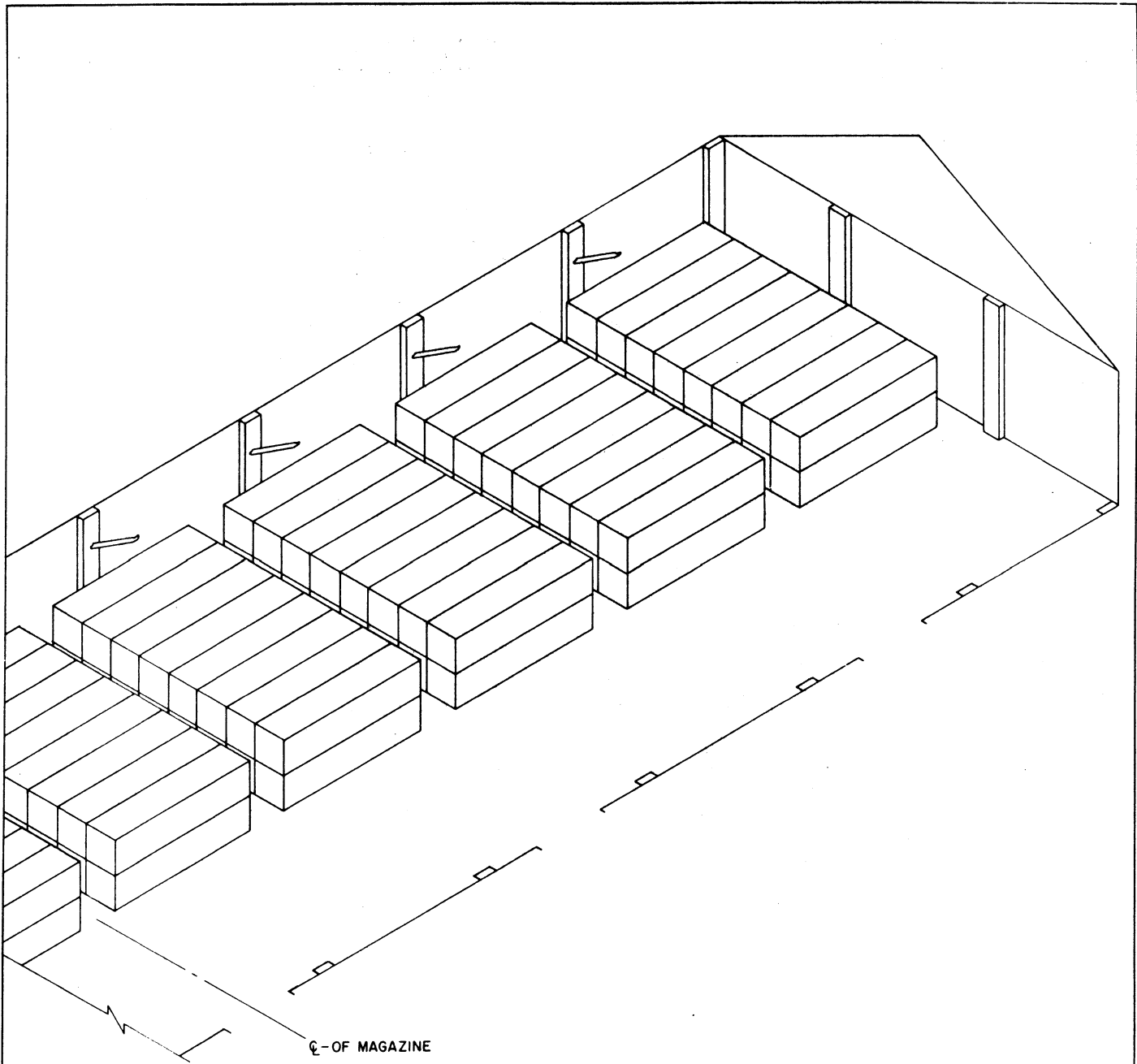
INDICATES END OF CONTAINER WITH HUMIDITY INDICATOR. CONTAINERS SHOWN WITHOUT ARROWS MAY BE POSITIONED IN EITHER DIRECTION.



SEE GENERAL NOTES ON PAGE 3.

**ISOMETRIC VIEW**

( 89' OVAL-ARCH MAGAZINE )



℄-OF MAGAZINE

ISOMETRIC VIEW

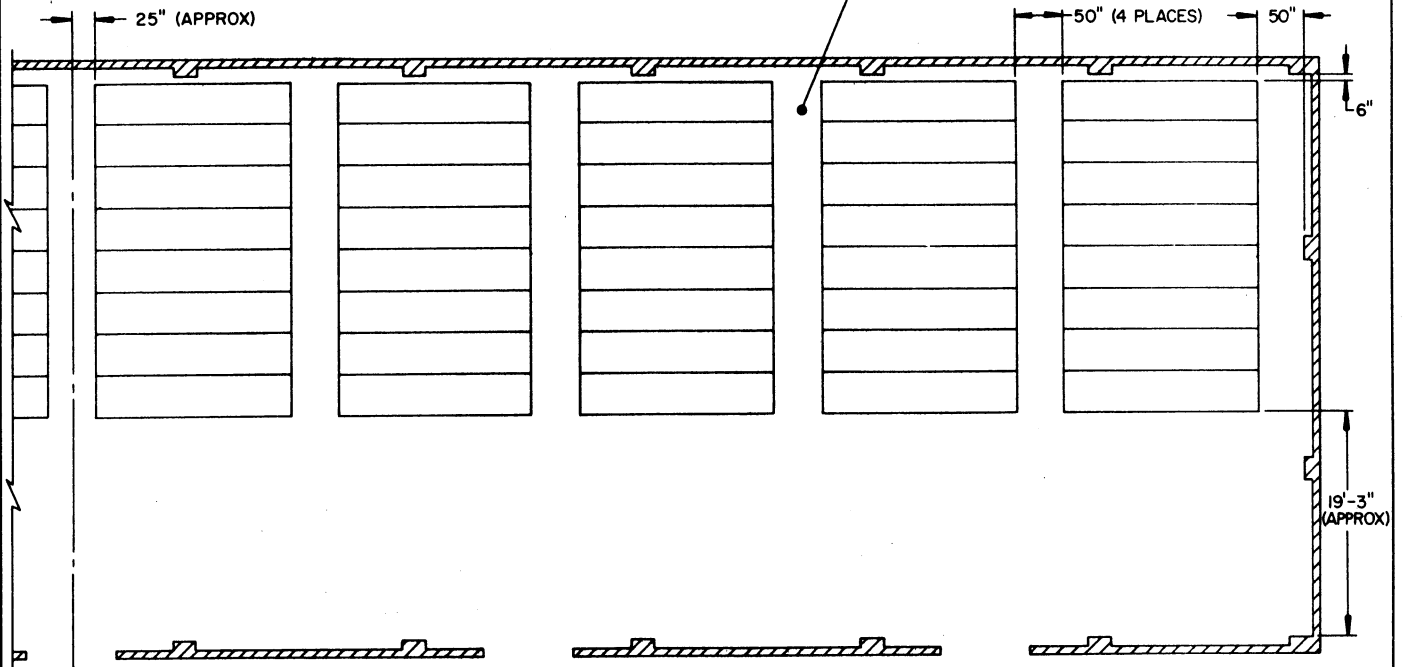
ONE-HALF OF A STANDARD MAGAZINE  
SHOWN.

STORAGE AS SHOWN

ONE-HALF OF A STANDARD MAGAZINE

<u>ITEM</u>	<u>QUANTITY</u>
CNU-89/E CONTAINER	80

ACCESS AISLE. SEE GENERAL NOTE "C" ON PAGE 3.



CL - OF MAGAZINE

PLAN VIEW

ONE-HALF OF A STANDARD MAGAZINE SHOWN.

SEE GENERAL NOTES ON PAGE 3.

