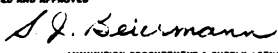
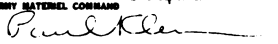


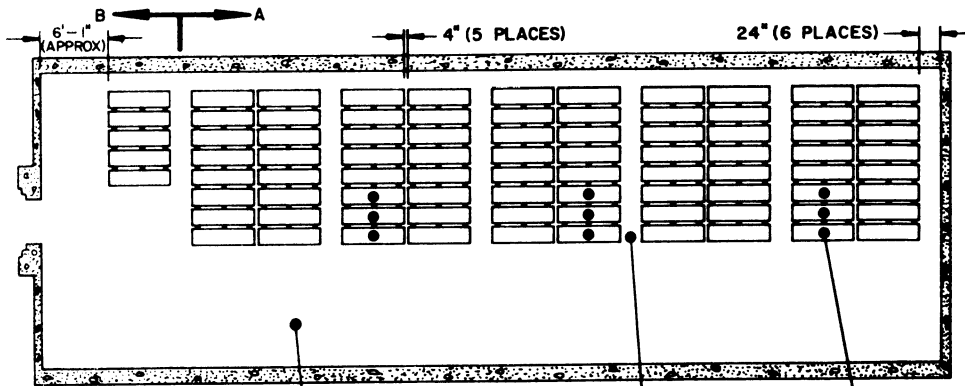
STORAGE IN 60' AND 80' IGLOO MAGAZINES OF M44 SERIES CLUSTER GENERATOR PACKED ONE PER WOODEN CONTAINER

INDEX

ITEM	PAGE(S)
GENERAL NOTES, AND MATERIAL SPECIFICATIONS-----	3
IGLOO STORAGE PROCEDURES-----	2,3
DETAILS-----	4

<small>DRAWN BY</small> L. J. HMW <small>CHECKED</small> TNS/JDS	<small>PREP. BY</small> C.F. / JDS <small>DATE AMEND. BY</small> John Bayle	<small>APSA PROJ. OFF</small> DMM	<small>SUBMITTER</small> C. F. H. G. C. S. C. <small>COMMANDING OFFICER, SAVANNAH ARMY DEPOT</small>								
REVISIONS			<small>EXAMINED AND APPROVED</small>  <small>AMMUNITION PROCUREMENT & SUPPLY AGENCY</small> <small>APPROVED BY ORDER OF COMMANDING GENERAL</small> <small>U. S. ARMY MATERIEL COMMAND</small> 								
<small>U. S. ARMY MATERIEL COMMAND</small> 16 JULY 1970			<table border="1" style="width: 100%; border-collapse: collapse;"> <tr> <th style="width: 25%;">CLASS</th> <th style="width: 25%;">DIVISION</th> <th style="width: 25%;">DRAWING</th> <th style="width: 25%;">FILE</th> </tr> <tr> <td style="text-align: center;">19</td> <td style="text-align: center;">48</td> <td style="text-align: center;">4503</td> <td style="text-align: center;">CBICI</td> </tr> </table>	CLASS	DIVISION	DRAWING	FILE	19	48	4503	CBICI
CLASS	DIVISION	DRAWING	FILE								
19	48	4503	CBICI								

DO NOT SCALE

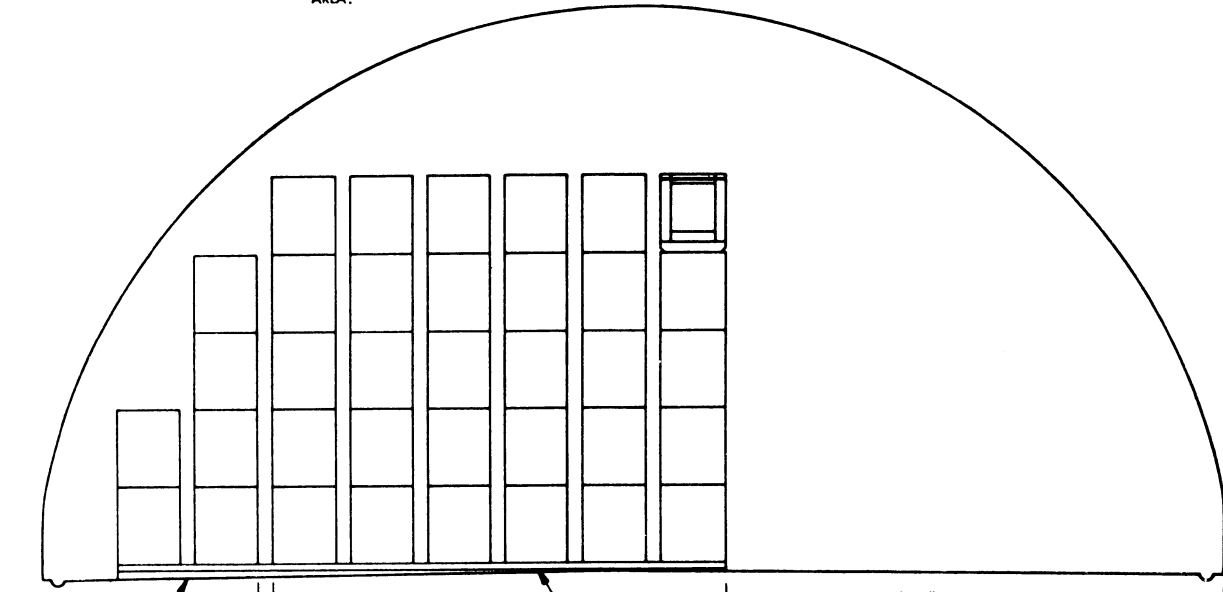


**STORAGE AS SHOWN
80' IGLOO**

ITEM	QUANTITY
CONTAINER W/GENERATOR	372

PLAN VIEW
(80' IGLOO)
MATERIALS HANDLING EQUIPMENT OPERATING AREA.

INSPECTION AISLE. SEE GENERAL NOTE "E" ON PAGE 3.



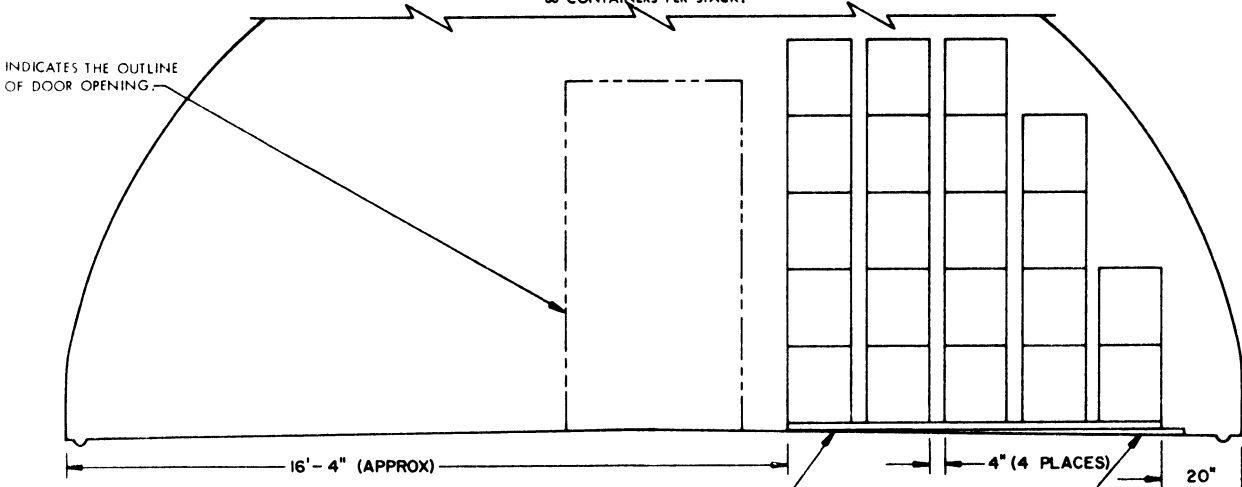
20" WEDGE, 9'-0" LONG (3 REQD PER STACK). SEE "WEDGE DETAIL" AND "PLACEMENT OF DUNNAGE" DETAIL ON PAGE 4.

4" (7 PLACES)

FLOOR DUNNAGE, 2" X 4" BY LENGTH TO SUIT (3 REQD PER STACK). SEE "PLACEMENT OF DUNNAGE" DETAIL ON PAGE 4.

11'-1" (APPROX)

SECTION A-A
36 CONTAINERS PER STACK.



INDICATES THE OUTLINE OF DOOR OPENING.

SECTION B-B
21 CONTAINERS PER STACK.

16'-4" (APPROX)

4" (4 PLACES)

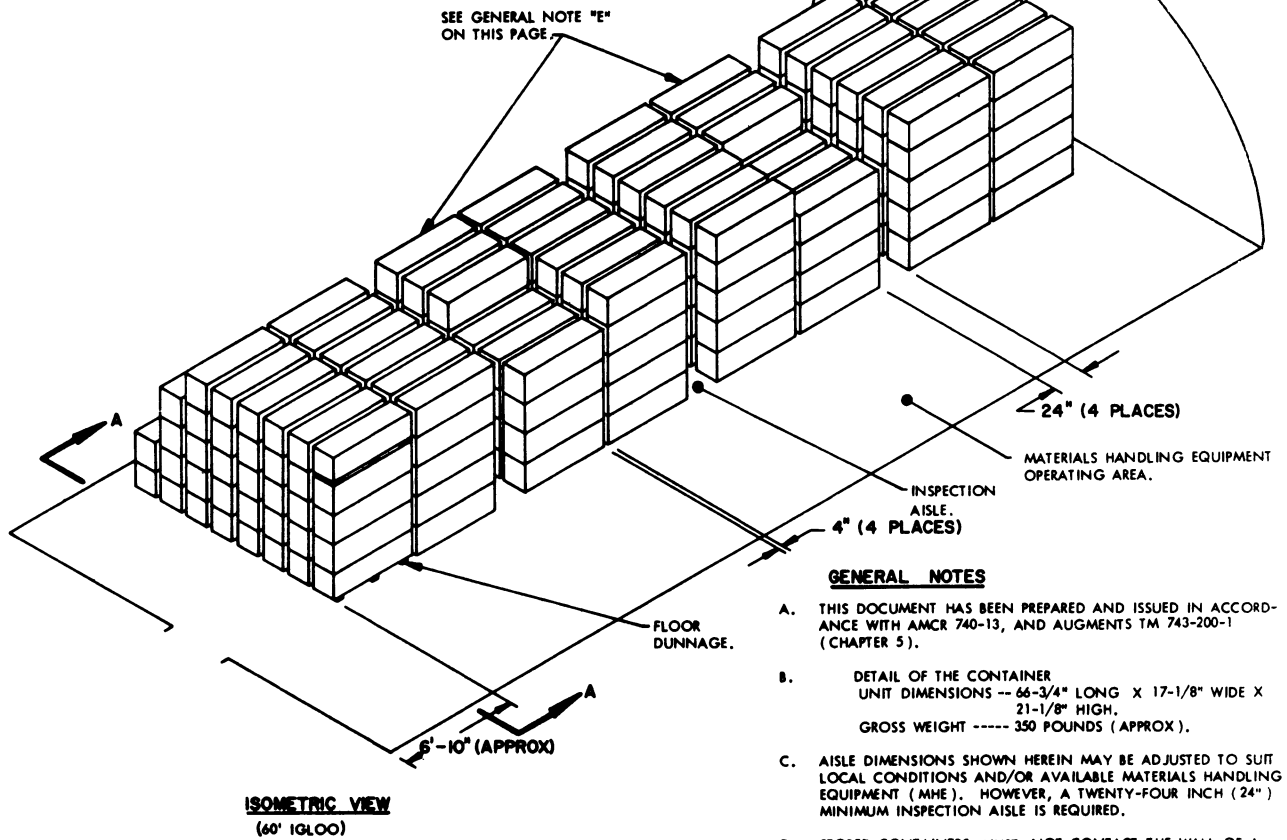
20"

FLOOR DUNNAGE, 2" X 4" BY LENGTH TO SUIT (3 REQD PER STACK). SEE "PLACEMENT OF DUNNAGE" DETAIL ON PAGE 4.

FLOOR WEDGE, 9'-0" LONG (3 REQD PER STACK). SEE "WEDGE DETAIL" AND "PLACEMENT OF DUNNAGE" DETAIL ON PAGE 4.

STORAGE AS SHOWN
60' IGLOO

ITEM QUANTITY
CONTAINER W/GENERATOR ----- 282



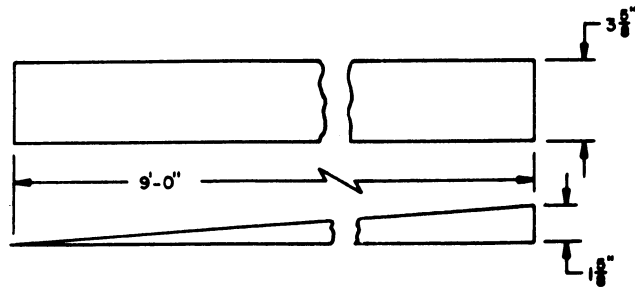
GENERAL NOTES

- A. THIS DOCUMENT HAS BEEN PREPARED AND ISSUED IN ACCORDANCE WITH AMCR 740-13, AND AUGMENTS TM 743-200-1 (CHAPTER 5).
- B. DETAIL OF THE CONTAINER UNIT DIMENSIONS -- 66-3/4" LONG X 17-1/8" WIDE X 21-1/8" HIGH. GROSS WEIGHT ----- 350 POUNDS (APPROX).
- C. AISLE DIMENSIONS SHOWN HEREIN MAY BE ADJUSTED TO SUIT LOCAL CONDITIONS AND/OR AVAILABLE MATERIALS HANDLING EQUIPMENT (MHE). HOWEVER, A TWENTY-FOUR INCH (24") MINIMUM INSPECTION AISLE IS REQUIRED.
- D. STORED CONTAINERS MUST NOT CONTACT THE WALL OF A MAGAZINE.
- E. DUE TO THE LOCATION OF AIR VENTS IT WILL BE NECESSARY TO OMIT THREE (3) CONTAINERS FROM STACKS WHICH ARE POSITIONED DIRECTLY UNDER THE VENTS. (AS APPLICABLE)
- F. TO PROVIDE FOR STABLE STACKS, WEDGES MAY BE USED UNDER FLOOR DUNNAGE. IF DESIRED, WEDGES MAY BE NAILED TO THE FLOOR DUNNAGE.

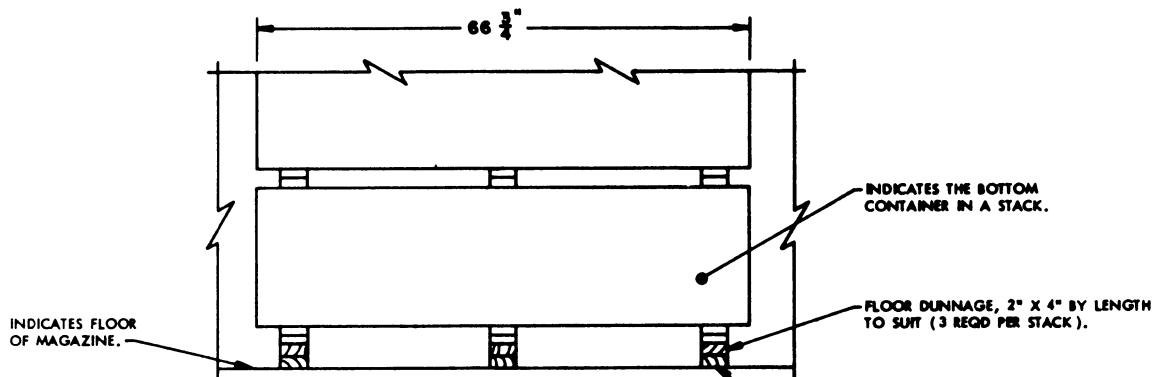
BILL OF MATERIAL (PER STACK)*		
LUMBER	LINEAR FEET	BOARD FEET
2" X 4"	42	28
WEDGE - 9'-0" ----- 3 REQD (SEE GENERAL NOTE F)		
* BILL OF MATERIAL PER STACK IS BASED ON FULL STACKS ONLY.		

MATERIAL SPECIFICATIONS

LUMBER: SEE TM 743-200-1, DUNNAGE LUMBER, FED SPEC MM-L-751.



WEDGE DETAIL
2" X 4" MATERIAL.



PLACEMENT OF DUNNAGE

THE ABOVE PARTIAL VIEW OF A STACK DEPICTS THE PROPER PLACEMENT OF FLOOR DUNNAGE AND WEDGES UNDER THE CONTAINER SKIDS. (SEE GENERAL NOTE F ON PAGE 3)