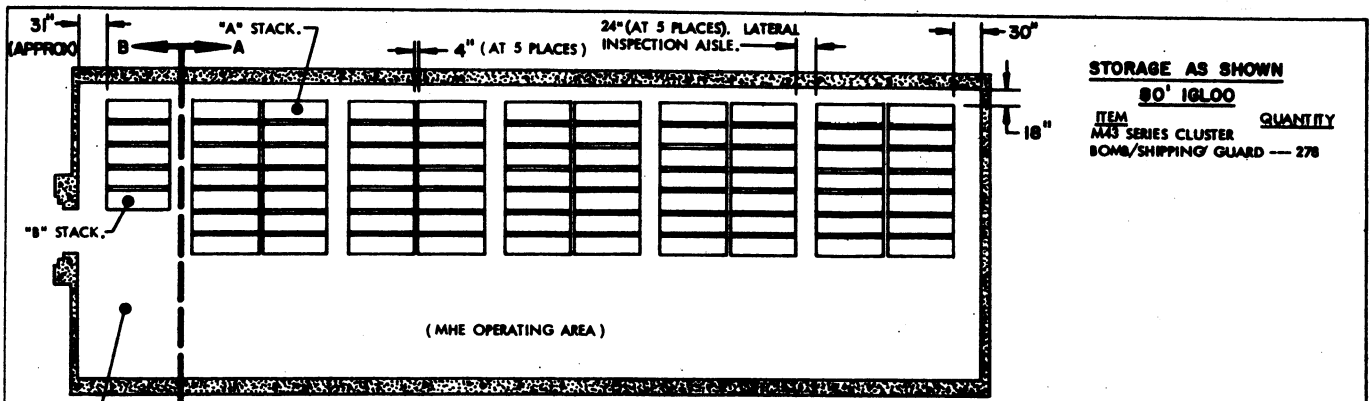


STORAGE IN 60' AND 80' IGLOO
 MAGAZINES OF THE M43
 SERIES CLUSTER BOMB PACKED
 ONE PER SHIPPING GUARD

DESIGNED BY <i>TRB/DBH</i>	HECKED BY <i>CS/DBH</i>	APPROVED BY <i>TRB</i>	IDENTIFIED <i>C.R. Felt Col. Cad. C.</i>	
EXAMINED AND APPROVED <i>Sgt. Seiermann</i>			COMMANDING OFFICER, SAVANNAH ARMY DEPOT	
REVISIONS			ADMINISTRATIVE PROCUREMENT & SUPPLY AGENCY	
			APPROVED BY CHIEF OF COMMUNICATIONS SECTION U. S. ARMY MATERIEL COMMAND <i>John R. ...</i>	
			U. S. ARMY MATERIEL COMMAND	
			JUNE 1970	
			CLASS	REVISION
			19	48
			DRAWING	FILE
			4502	CB1B1

DO NOT SCALE

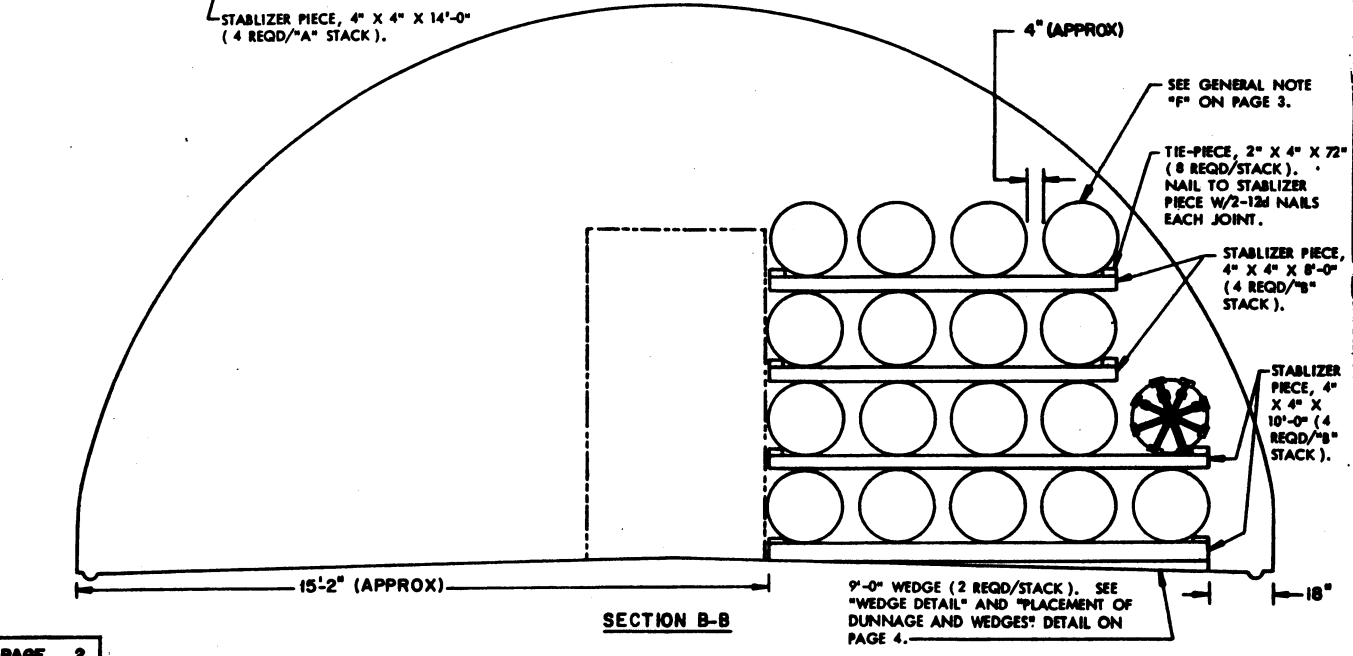
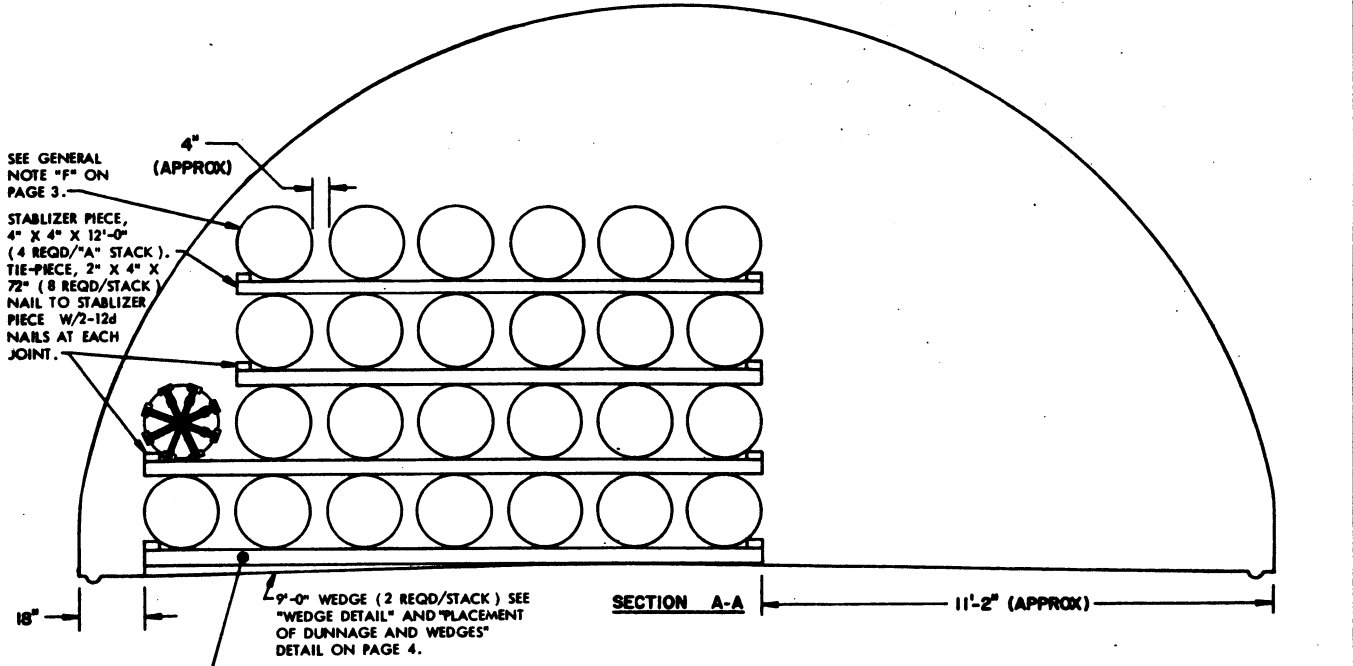


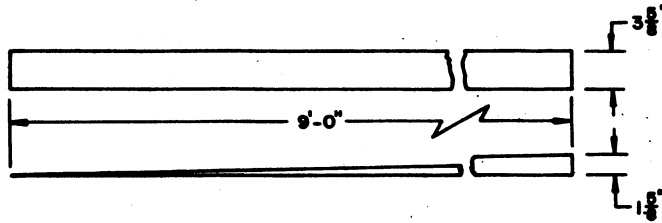
STORAGE AS SHOWN
80' IGLOO

ITEM	QUANTITY
M43 SERIES CLUSTER BOMB/SHIPPING GUARD	— 278

PLAN VIEW
(80' IGLOO)

MHE OPERATING AREA.
SEE GENERAL NOTES "D" AND "E" ON PAGE 3.

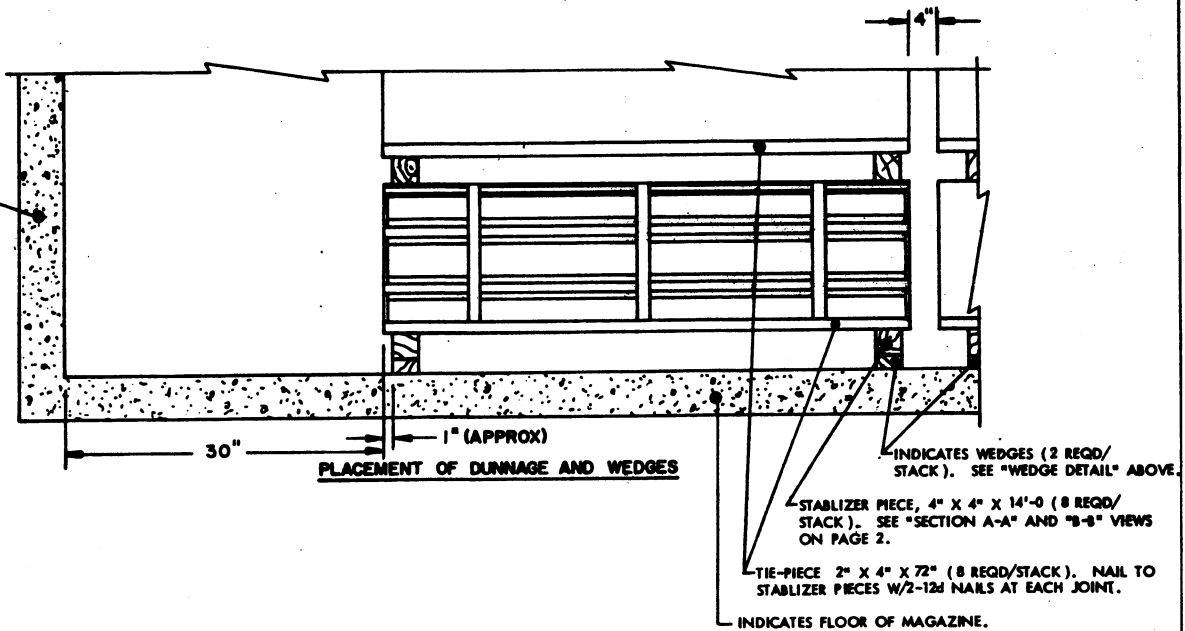




WEDGE DETAIL

WEDGE IS FORMED FROM 2" X 4" MATERIAL (2 REQD/STACK). SEE "PLACEMENT OF DUNNAGE AND WEDGES" DETAIL BELOW AND GENERAL NOTE "F" ON PAGE 3.

INDICATES REAR WALL OF MAGAZINE.



30" ——— 1" (APPROX) ———
PLACEMENT OF DUNNAGE AND WEDGES

INDICATES WEDGES (2 REQD/STACK). SEE "WEDGE DETAIL" ABOVE.

STABILIZER PIECE, 4" X 4" X 14'-0" (8 REQD/STACK). SEE "SECTION A-A" AND "B-B" VIEWS ON PAGE 2.

TIE-PIECE 2" X 4" X 72" (8 REQD/STACK). NAIL TO STABILIZER PIECES W/2-12d NAILS AT EACH JOINT.

INDICATES FLOOR OF MAGAZINE.