

STORAGE IN 60' & 80' IGLOO AND 80' STRADLEY MAGAZINES OF THE M36 SERIES INCENDIARY BOMB (CLUSTER) PACKED TWO PER WOOD PALLET

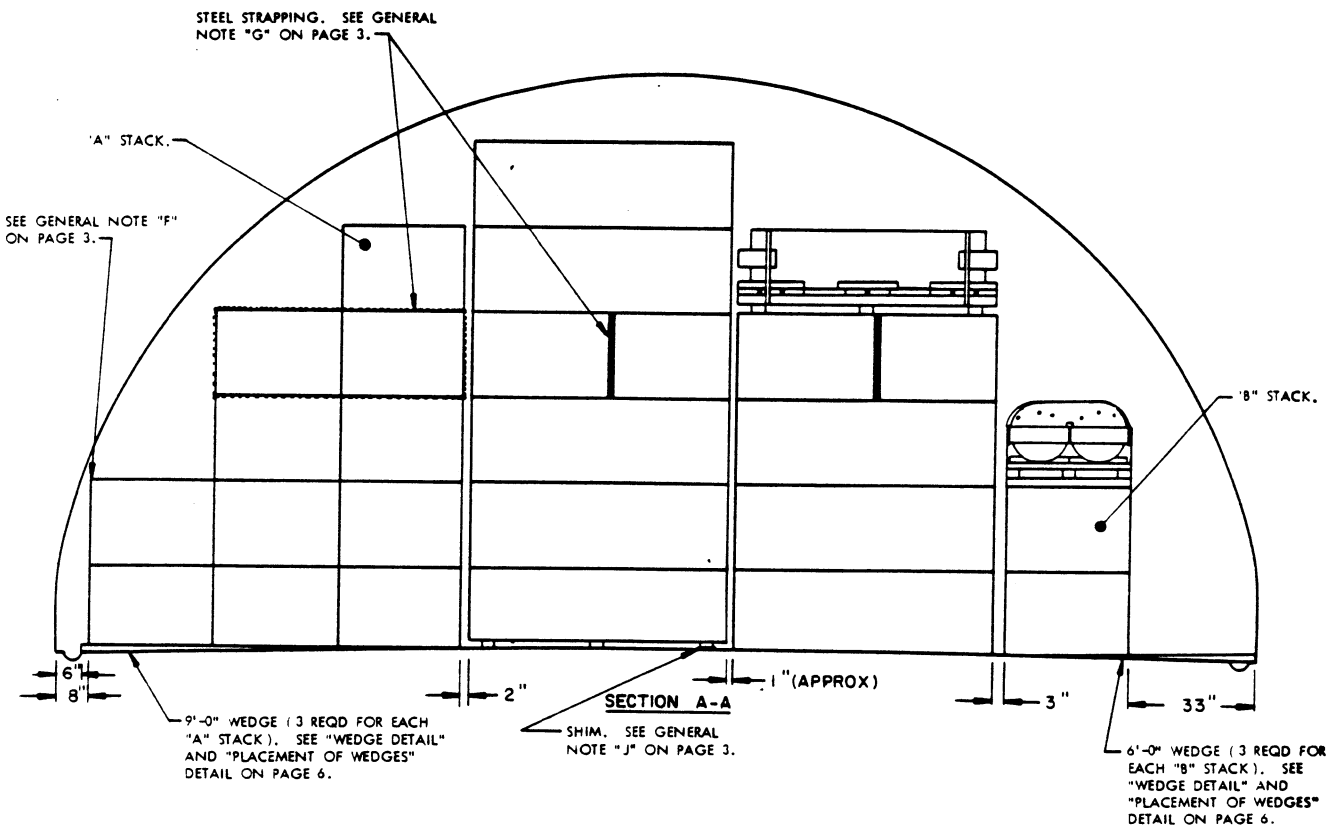
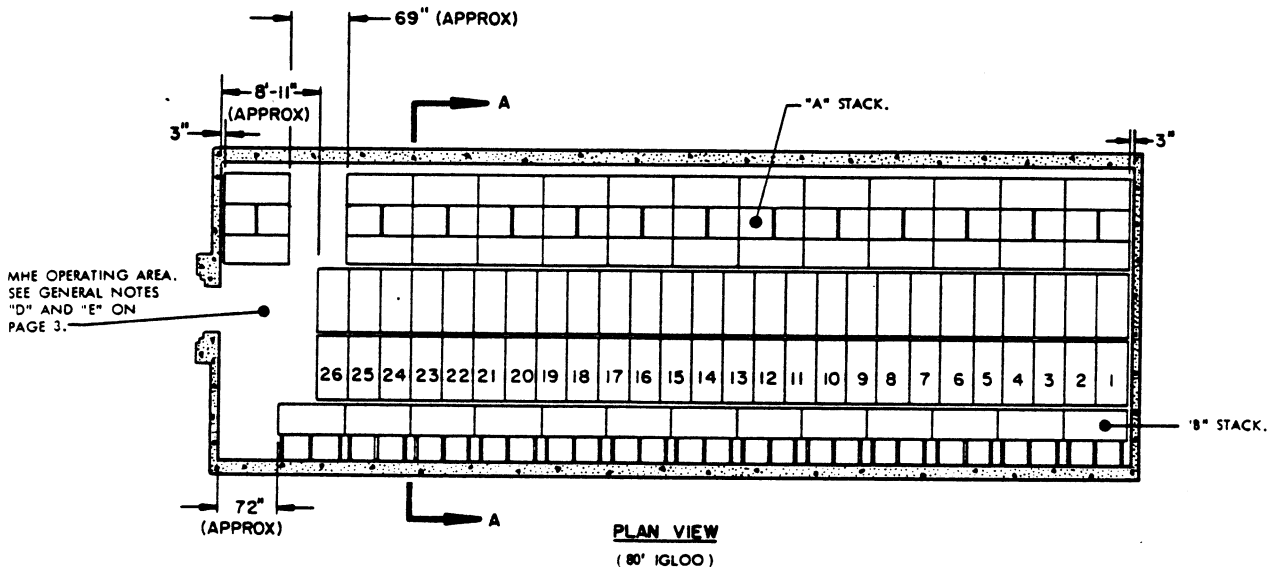
<u>ITEM</u>	<u>INDEX</u>	<u>PAGE(S)</u>
GENERAL NOTES, AND MATERIAL SPECIFICATIONS-----		3
IGLOO STORAGE PROCEDURES-----		2,3
STRADLEY STORAGE PROCEDURES-----		4,5
DETAILS-----		6

<small>DESIGNED BY</small> <i>P. G. / C. B. E.</i>	<small>PROJ. ENG.</small> <i>MWD / MWR</i>	<small>APPROVED BY</small> <i>C. K.</i>	<small>SUBMITTED</small> <i>C. K. / J. H. / G. B. / C. C.</i>
<small>CONTRACT</small> <i>ARR / 2. 1. 1.</i>	<small>ARMY MATERIEL CTR</small> <i>Order / Signd</i>		<small>COMMANDING OFFICER, SAVANNAH ARMY DEPOT</small>
REVISIONS			<small>EXAMINED AND APPROVED</small> <i>William J. Martin</i>
			<small>AMMUNITION PROCUREMENT & SUPPLY AGENCY</small>
			<small>APPROVED BY ORDER OF COMMANDING GENERAL U. S. ARMY MATERIEL COMMAND</small>
			<i>P. M. / K. M.</i>
			U. S. ARMY MATERIEL COMMAND
			20 APRIL 1970
		<small>CLASS</small>	<small>DIVISION</small>
		19	48
		<small>DRAWING</small>	<small>FILE</small>
		4501	CB-1-14 PBI

DO NOT SCALE

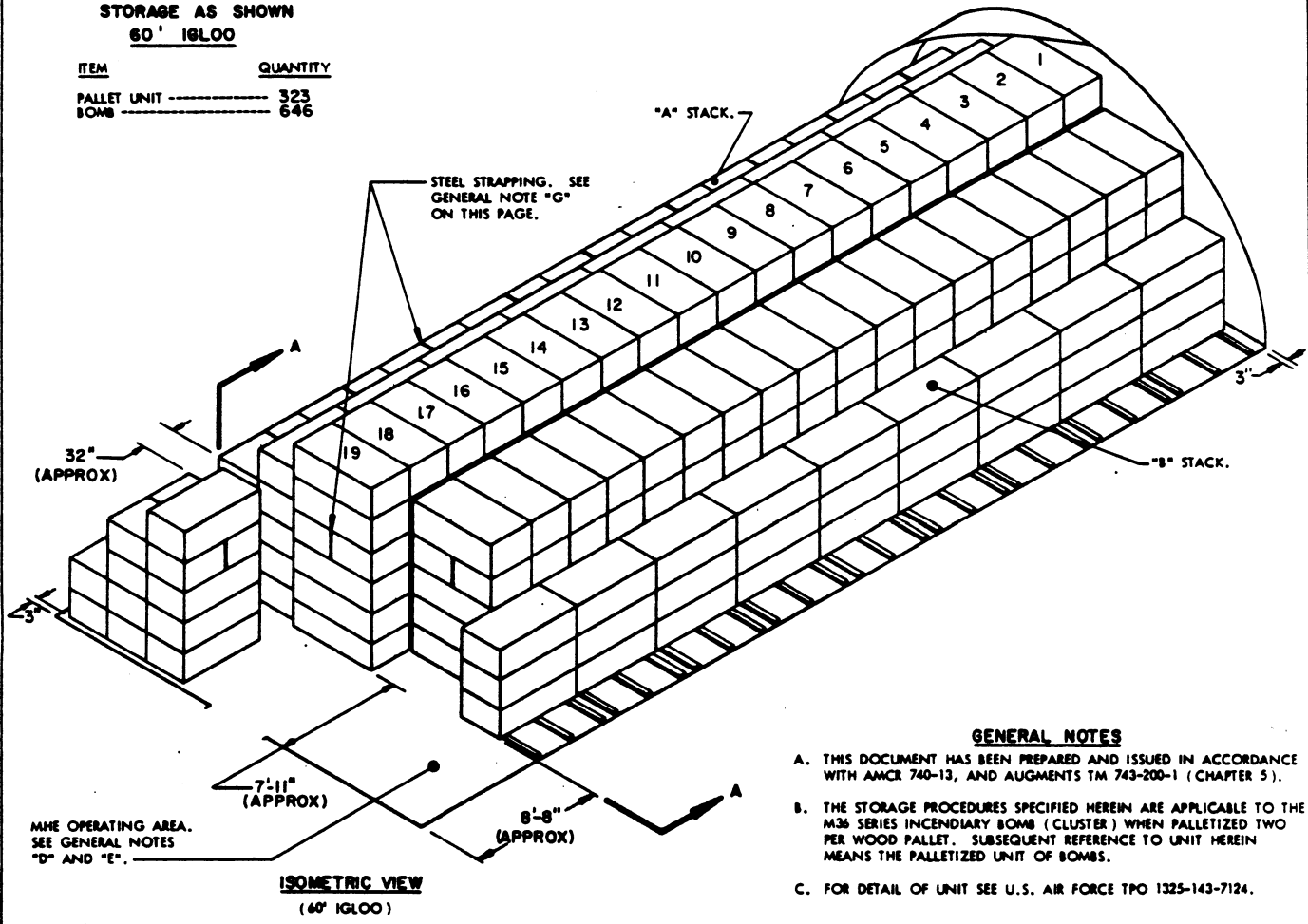
STORAGE AS SHOWN
80' IGLOO

ITEM	QUANTITY
PALLET UNIT	468
SCMS	936



**STORAGE AS SHOWN
60' IGLOO**

ITEM	QUANTITY
PALLET UNIT -----	323
BOMB -----	646



**ISOMETRIC VIEW
(60' IGLOO)**

BILL OF MATERIAL PER STACK		
STACK	WEDGE SIZE	NO. REQD
"A"	2" X 4" X 9'-0"	3
"B"	2" X 4" X 6'-0"	3

MATERIAL SPECIFICATIONS

LUMBER ----- : SEE TM 743-200-1, DUNNAGE LUMBER; FED SPEC MM-L-751.

STEEL STRAPPING: TYPE I OR IV, CLASS A OR B, FED SPEC QQ-5-781.

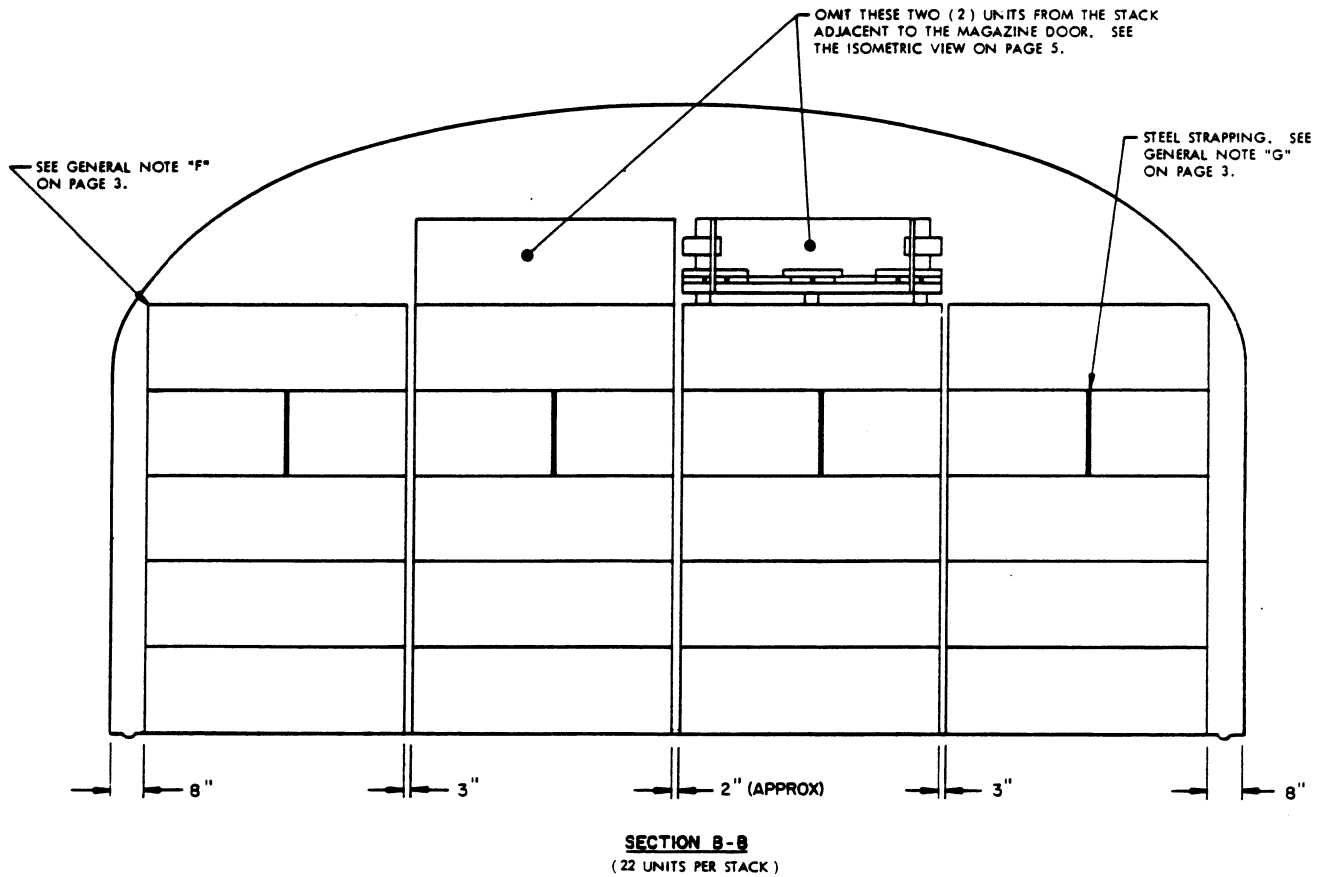
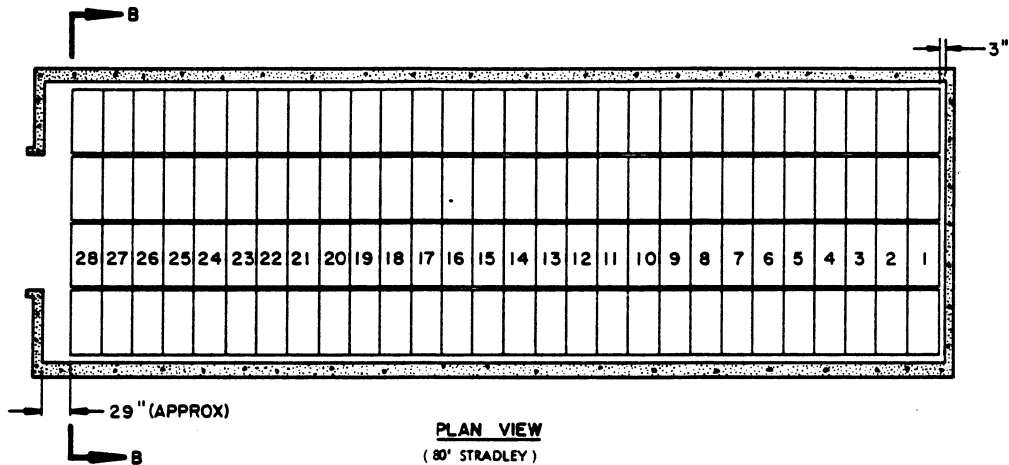
STRAP SEAL ---- : COMMERCIAL GRADE.

GENERAL NOTES

- A. THIS DOCUMENT HAS BEEN PREPARED AND ISSUED IN ACCORDANCE WITH AMCR 740-13, AND AUGMENTS TM 743-200-1 (CHAPTER 5).
- B. THE STORAGE PROCEDURES SPECIFIED HEREIN ARE APPLICABLE TO THE M38 SERIES INCENDIARY BOMB (CLUSTER) WHEN PALLETIZED TWO PER WOOD PALLET. SUBSEQUENT REFERENCE TO UNIT HEREIN MEANS THE PALLETIZED UNIT OF BOMBS.
- C. FOR DETAIL OF UNIT SEE U.S. AIR FORCE TPO 1325-143-7124.

UNIT DIMENSIONS --- 69" LONG BY 33-1/8" WIDE BY 23-1/4" HIGH.
GROSS WEIGHT ----- 1,910 POUNDS (APPROX).
CUBE ----- 30.8 CUBIC FEET.

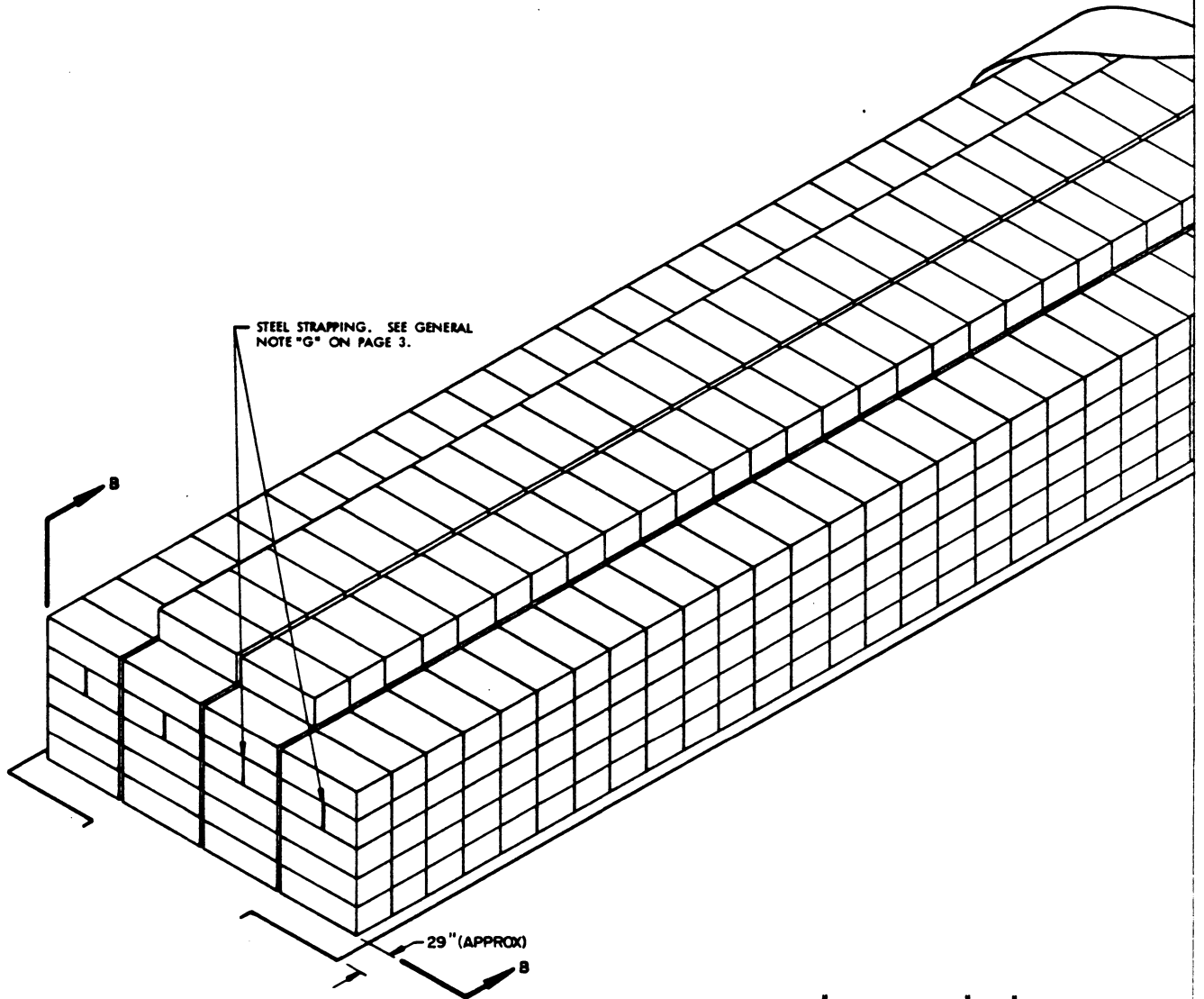
- D. MATERIAL HANDLING EQUIPMENT (MHE) OPERATING AREAS SHOWN HEREIN MAY BE ADJUSTED TO SUIT LOCAL CONDITIONS AND/OR AVAILABLE MHE. UNIT STACKS, AS NECESSARY MAY BE OMITTED FROM A DEPICTED STORAGE PATTERN IF THE MHE OPERATING AREA IS NOT OF SUFFICIENT WIDTH TO ACCOMPLISH STACKING OPERATIONS.
- E. IF THE AVAILABLE MHE PERMITS, ADDITIONAL PALLETS MAY BE STORED WITHIN THE FRONTAL AREA OF A MAGAZINE.
- F. STORED UNITS MUST NOT CONTACT THE WALL OF A MAGAZINE. TO PROVIDE FOR THIS MANDATORY CLEARANCE REQUIREMENT, UNITS MAY BE ELIMINATED FROM THE DEPICTED STORAGE PATTERN AS NECESSARY AND/OR THE SPACE BETWEEN THE STACKS LATERALLY MAY BE ADJUSTED AS REQUIRED.
- G. STACK STABILIZING STRAPS OF 1-1/4" X .035" X 15'-0" LONG STEEL STRAPPING WILL BE INSTALLED AROUND THE FOURTH LAYER UNITS OF TWO (2) ADJACENT STACKS IF EITHER STACK IS FIVE (5) OR MORE UNITS HIGH; ONE (1) STRAP IS REQUIRED FOR EACH DOUBLE STACK AS SHOWN. **CAUTION:** A SINGLE STACK MUST NOT BE STACKED MORE THAN FOUR (4) UNITS HIGH WITHOUT BEING STRAPPED TO AN ADJACENT STACK. SEAL THE LAP JOINT OF THE STRAPPING WITH ONE (1) STRAP SEAL LOCATED SO AS NOT TO BE IN CONTACT WITH THE BOMB.
- H. ITEMS WILL NOT BE MIXED, BUT ONLY TO THE EXTENT THAT ITEMS OF ONE LOT WILL NOT BE STACKED ON TOP OF ITEMS FROM ANOTHER LOT.
- J. TO PROVIDE FOR STABLE STACKS, SHIMS OF A THICKNESS TO SUIT SHOULD BE USED UNDER ONE OR BOTH END SKIDS OF PALLET.



STORAGE AS SHOWN

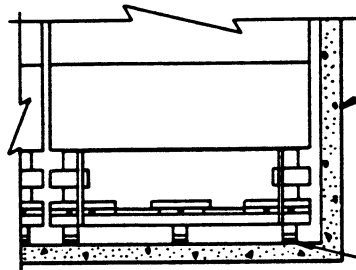
80' STRADLEY

<u>ITEM</u>	<u>QUANTITY</u>
PALLET UNIT -----	614
BOMB -----	1,228



ISOMETRIC VIEW
(80' STRADLEY)

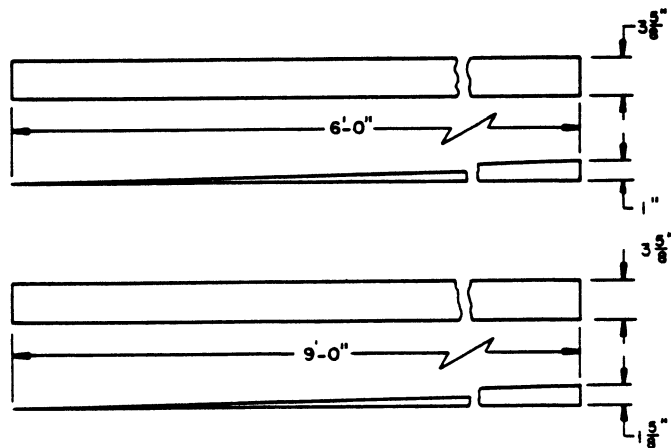
FOR "GENERAL NOTES" AND "MATERIAL SPECIFICATIONS", SEE PAGE 3



INDICATES REAR WALL OF MAGAZINE.

INDICATES WEDGE. WHERE WEDGES ARE SPECIFIED THEY WILL BE USED IN SETS OF THREE (3), ONE (1) EACH IN LINE WITH A SKID OF THE BOMB PALLET AS SHOWN.

PLACEMENT OF WEDGES



WEDGE DETAILS

2" X 4" MATERIAL.

DETAILS