

APPROVED BY
BUREAU OF EXPLOSIVES

O. M. Day

DATE 11/10/96

LOADING AND BRACING* IN SIDE OPENING ISO CONTAINERS OF COMPLETE ROUNDS PACKED IN CYLINDRICAL METAL CONTAINERS

T53 SERIES CONTAINERS

INDEX

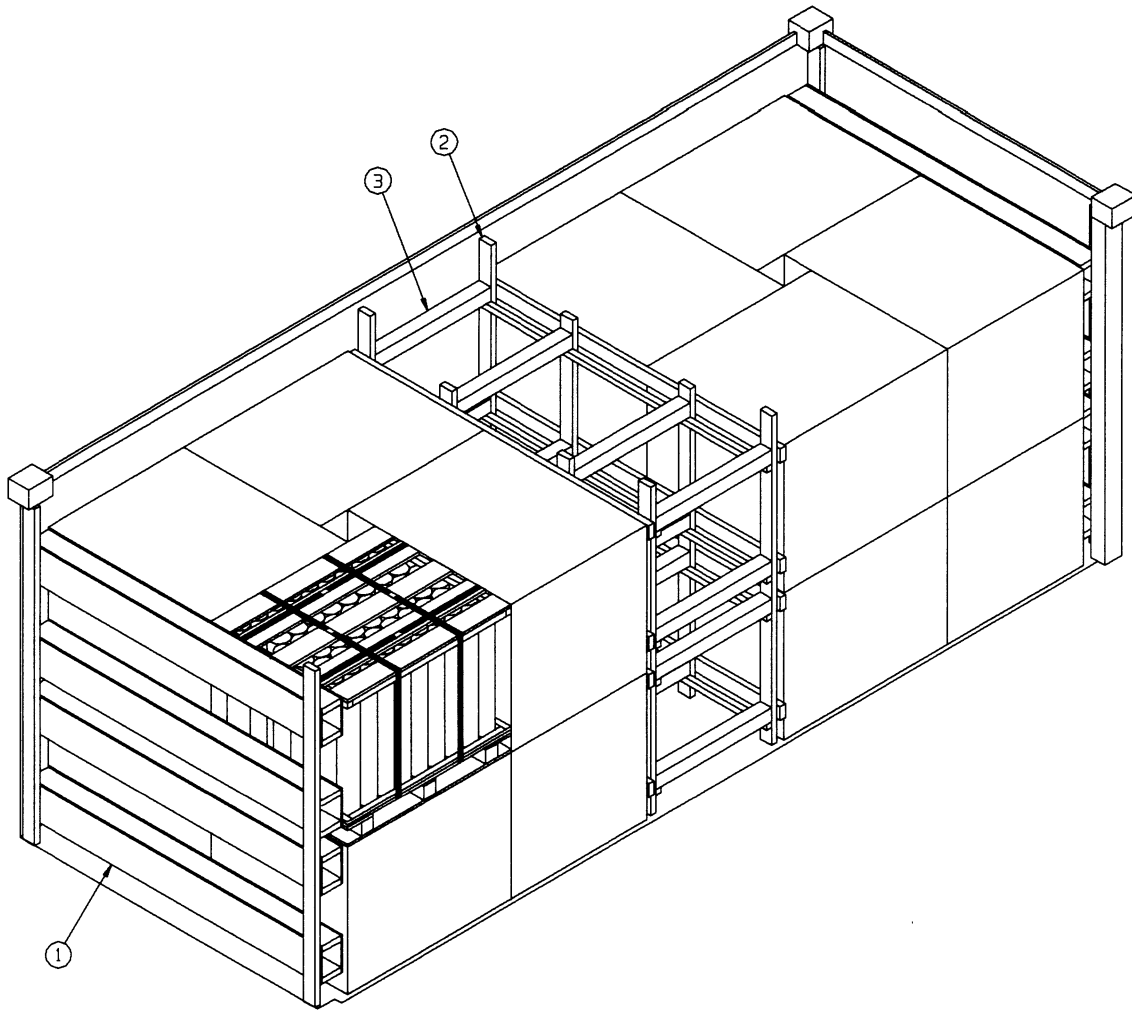
<u>ITEM</u>	<u>PAGE(S)</u>
TYPICAL LOADING PROCEDURES - - - - -	2
GENERAL NOTES AND MATERIAL SPECIFICATIONS - - - - -	3
PALLET UNIT DETAIL - - - - -	4
DETAILS - - - - -	5,6

* LOADING AND BRACING SPECIFICATIONS SET FORTH WITHIN THIS DRAWING ARE APPLICABLE TO LOADS THAT ARE TO BE SHIPPED BY TRAILER/CONTAINER-ON-FLATCAR (T/COFC) RAIL CARRIER SERVICE. THESE SPECIFICATIONS MAY ALSO BE USED FOR LOADS THAT ARE TO BE MOVED BY MOTOR OR WATER CARRIERS.

U.S. ARMY MATERIEL COMMAND DRAWING

APPROVED, U.S. ARMY INDUSTRIAL OPERATIONS COMMAND <i>James E. Otkewich</i>	DRAFTSMAN	TECHNICIAN	ENGINEER M. SARDONE
	VALIDATION ENGINEERING DIVISION	TRANSPORTATION ENGINEERING DIVISION <i>W. Ernst</i>	LOGISTICS ENGINEERING OFFICE <i>W. Ernst</i>
APPROVED BY ORDER OF COMMANDING GENERAL, U.S. ARMY MATERIEL COMMAND <i>William F. Ernst</i>	OCTOBER 1996		
U.S. ARMY DEFENSE AMMUNITION CENTER AND SCHOOL	CLASS	DIVISION	DRAWING
	19	48	4265/2
			FILE 15PM1014

DO NOT SCALE



ISOMETRIC VIEW

KEY NUMBERS

- ① END BLOCKING ASSEMBLY (2 REQD). SEE THE DETAIL ON PAGE 5 AND THE ALTERNATIVE END BLOCKING ASSEMBLY ON PAGE 6.
- ② CENTER GATE (2 REQD). SEE THE DETAIL ON PAGE 6.
- ③ STRUT, 4" X 4" BY CUT-TO-FIT (REF: 34") (16 REQD). TOENAIL TO THE PIECES MARKED ②, W/2-12d NAILS AT EACH END. SEE THE "BEVEL-CUT" DETAIL ON PAGE 4.

BILL OF MATERIAL

LUMBER	LINEAR FEET	BOARD FEET
2" X 2"	58	20
2" X 4"	142	95
2" X 6"	115	115
4" X 4"	46	62
NAILS	NO. REQD	POUNDS
6d (2")	352	2-1/4
10d (3")	192	3
12d (3-1/4")	64	1-1/4
PLYWOOD, 1/2"	91 SQ FT REQD	125 LBS

LOAD AS SHOWN

ITEM	QUANTITY	WEIGHT (APPROX)
PALLET UNIT	16	35,968 LBS
DUNNAGE		716 LBS
CONTAINER		6,050 LBS
TOTAL WEIGHT		42,734 LBS (APPROX)

(GENERAL NOTES CONTINUED)

GENERAL NOTES

L. MAXIMUM LOAD WEIGHT CRITERIA:

THE MAXIMUM LOAD WEIGHTS ARE CONTROLLED BY EQUIPMENT CAPABILITY FACTORS. ALTHOUGH THE HEAVIEST MAXIMUM LOADS ARE DELINEATED IN THE LOAD VIEWS, PROVISIONS ARE INCLUDED WITHIN THIS DRAWING SO THAT THE BASIC LOADS CAN BE ADJUSTED TO SATISFY A LESSER QUANTITY OF LADING UNITS. DEPENDING ON TRANSPORTATION ROUTING, IT MAY BE NECESSARY TO REDUCE THE LOAD WEIGHT TO SATISFY "WEIGHT LAWS" OF CERTAIN STATES. ALSO, IT MAY BE NECESSARY TO REDUCE THE LOAD WEIGHT TO SATISFY OTHER WEIGHT RESTRICTIONS IMPOSED ON THE INTERMODAL CONTAINER SYSTEM.

M. REQUIREMENTS CITED WITHIN THE BUREAU OF EXPLOSIVES PAMPHLET 6C APPLY WHEN THE SHIPMENT MOVES BY TRAILER/CONTAINER-ON-FLATCAR (T/COFC). SPECIAL T/COFC NOTES FOLLOW:

- 1. A LOADED CONTAINER MUST BE ON A CHASSIS EQUIPPED WITH TWO BOGIE ASSEMBLIES WHEN BEING MOVED IN TOFF SERVICE.
- 2. THE LOAD LIMIT OF A T/COFC RAILCAR MUST NOT BE EXCEEDED, NOR WILL A CAR BE LOADED SO THAT THE TRUCK UNDER ONE END OF THE CAR CARRIES MORE THAN ONE-HALF OF THE LOAD LIMIT FOR THAT CAR.

N. DURING INTRASTATE AND/OR INTERSTATE MOVES BY MOTOR CARRIER, A PROPER CHASSIS OR MODIFIED FLATBED TRAILER MUST BE USED TO PRECLUDE VIOLATION OF ONE OR MORE "WEIGHT LAWS" APPLICABLE TO THE STATE OR STATES INVOLVED.

O. WHETHER A CONTAINER IS FULL OR IS LOADED WITH A REDUCED QUANTITY OF LADING UNITS, THE LENGTHWISE CENTER OF GRAVITY OF THE LOAD MUST BE WITHIN 12", IN EITHER DIRECTION, OF THE MID-POINT OF THE CONTAINER.

P. THE QUANTITY OF PALLET UNITS SHOWN IN THE LOAD ON PAGE 2 MAY BE REDUCED FOR SHIPMENT, IF DESIRED. SEE THE OMITTED UNIT ASSEMBLY ON PAGE 4.

Q. AS REQUIRED BY THE ASSOCIATION OF AMERICAN RAILROADS (AAR), ALL 1-1/4" AND 2" STEEL STRAPPING USED FOR LOAD RESTRAINT MUST BE MARKED AS SPECIFIED WITHIN THE APPLICABLE AAR RULES GOVERNING LOADING, BLOCKING AND BRACING OF FREIGHT WITHIN THE CONVEYANCE. FOR THE SPECIFIC MARKING SIZE, FREQUENCY, ETC., REQUIRED, REFER TO THE APPROPRIATE AAR LOADING RULES.

R. RECOMMENDED SEQUENTIAL LOADING PROCEDURES:

- 1. PREFABRICATE TWO END BLOCKING ASSEMBLIES AND TWO CENTER GATES.
- 2. INSTALL ONE END BLOCKING ASSEMBLY AND LOAD EIGHT PALLET UNITS.
- 3. REPEAT STEP TWO.
- 4. INSTALL TWO CENTER GATES AND 16 STRUTS.

A. THIS DOCUMENT HAS BEEN PREPARED AND ISSUED IN ACCORDANCE WITH AR 740-1 AND AUGMENTS TM 743-200-1 (CHAPTER 5).

B. THE OUTLOADING PROCEDURES SPECIFIED IN THIS DRAWING ARE APPLICABLE TO LOADS OF COMPLETE ROUNDS PACKED IN T53 SERIES METAL CONTAINERS. SUBSEQUENT REFERENCE TO PALLET UNIT HEREIN MEANS THE PALLET UNIT WITH AMMUNITION ITEMS. SEE PAGE 4 AND AMC DRAWING 19-48-4079/2-20PM1002 FOR DETAILS OF THE PALLET UNIT. CAUTION: REGARDLESS OF THE QUANTITY OF UNITS TO BE SHIPPED, THE "MAXIMUM GROSS WEIGHT" OF THE SIDE OPENING ISO CONTAINER MUST NOT BE EXCEEDED.

C. THE LOADS AS SHOWN ARE BASED ON 6,050 POUND 20' LONG BY 8' WIDE BY 8'-6" HIGH SIDE OPENING ISO CONTAINER WITH INSIDE DIMENSIONS OF 19'-4" LONG BY 89" WIDE BY 88" HIGH AND A MAXIMUM GROSS WEIGHT OF 52,910 POUNDS. THE LOAD IS DESIGNED FOR TRAILER/CONTAINER-ON-FLATCAR (T/COFC) SHIPMENT, HOWEVER, THE LOAD AS DESIGNED CAN ALSO BE MOVED BY MOTOR OR WATER CARRIERS. NOTICE: OTHER CONTAINERS OF THE SAME DESIGN CONFIGURATION CAN ALSO BE USED.

D. WHEN LOADING THE UNITS, THEY ARE TO BE POSITIONED SO AS TO ACHIEVE A TIGHT LOAD (TIGHT AGAINST THE DUNNAGE ASSEMBLIES). THE UNBLOCKED SPACE ACROSS THE WIDTH OF A LOAD BAY IS NOT TO EXCEED 1-1/2". THE THICKNESS AND QUANTITY OF THE DUNNAGE LUMBER USED MAY BE ADJUSTED AS REQUIRED TO FACILITATE VARIANCE IN THE SIZE OF THE CONTAINER.

E. DUNNAGE LUMBER SPECIFIED IS OF NOMINAL SIZE. FOR EXAMPLE, 1" X 6" MATERIAL IS ACTUALLY 3/4" THICK BY 5-1/2" WIDE AND 2" X 6" MATERIAL IS ACTUALLY 1-1/2" THICK BY 5-1/2" WIDE.

F. A STAGGERED NAILING PATTERN WILL BE USED WHENEVER POSSIBLE WHEN NAILS ARE DRIVEN INTO JOINTS OF DUNNAGE ASSEMBLIES OR WHEN LAMINATING DUNNAGE. ADDITIONALLY, THE NAILING PATTERN FOR AN UPPER PIECE OF LAMINATED DUNNAGE WILL BE ADJUSTED AS REQUIRED SO THAT A NAIL FOR THAT PIECE WILL NOT BE DRIVEN THROUGH ONTO OR RIGHT BESIDE A NAIL IN A LOWER PIECE.

G. IN SOME CONTAINERS THERE IS A SLOT AT THE CORNERS OF THE ENDWALLS. PIECES OF DUNNAGE MATERIAL MUST BE LAMINATED TO THE BUFFER PIECES ON THE END BLOCKING ASSEMBLY TO PROVIDE A FLAT SURFACE FOR THE BUFFER PIECES. A PIECE OF 2" X 4", 2" X 3" OR A SPECIAL WIDTH PIECE CUT-TO-FIT CAN BE USED. THIS FILL PIECE WILL BE NAILED WITH ONE APPROPRIATELY SIZED NAIL EVERY 12". NOTE THAT SOME CONTAINERS ARE EQUIPPED WITH "TIE-BARS" IN THE CORNER SLOT, WHICH PRECLUDE THE USE OF A FULL HEIGHT FILL PIECE. WHEN "TIE-BARS" ARE PRESENT, THE FILL PIECE MUST BE INSTALLED IN SEGMENTS DESIGNED TO FIT BETWEEN THE "TIE-BARS" VERTICALLY. THE FILL PIECE(S) IS NOT REQUIRED WHEN THE CORNER PORTIONS OF THE CONTAINER ENDWALLS ARE SMOOTH AND FLAT. DO NOT ALLOW ANY DUNNAGE ASSEMBLY TO CONTACT THE CONTAINER ENDWALLS, ONLY THE CORNER POSTS OF THE CONTAINER SHOULD BE USED FOR LONGITUDINAL BLOCKING.

H. CAUTION: DO NOT NAIL DUNNAGE MATERIAL TO THE CONTAINER WALLS OR FLOOR. ALL NAILING WILL BE WITHIN THE DUNNAGE.

J. PORTIONS OF THE CONTAINER DEPICTED WITHIN THIS DRAWING, SUCH AS THE SIDE DOORS, HAVE NOT BEEN SHOWN IN THE LOAD VIEW FOR CLARITY PURPOSES.

K. CONVERSION TO METRIC EQUIVALENTS: DIMENSIONS WITHIN THIS DOCUMENT ARE EXPRESSED IN INCHES AND WEIGHTS ARE EXPRESSED IN POUNDS. WHEN NECESSARY, THE METRIC EQUIVALENTS MAY BE COMPUTED ON THE BASIS OF ONE INCH EQUALS 25.4 MM AND ONE POUND EQUALS 0.454 KG.

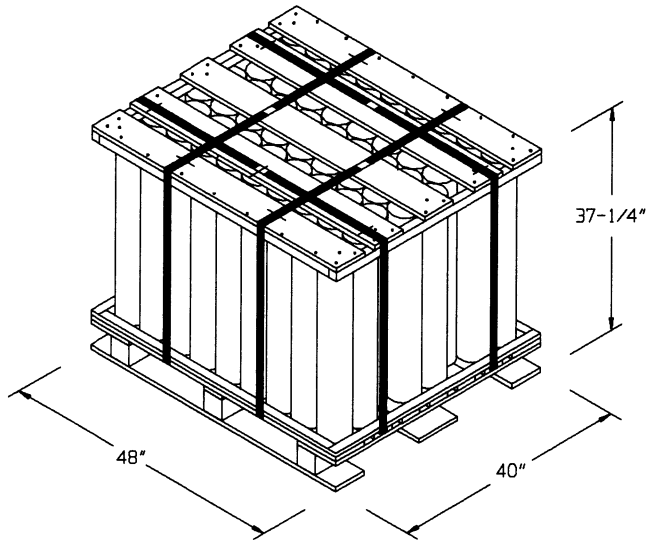
MATERIAL SPECIFICATIONS

LUMBER - - - - - : SEE TM 743-200-1 (DUNNAGE LUMBER) AND FED SPEC MM-L-751.

NAILS - - - - - : FED SPEC FF-N-105; COMMON.

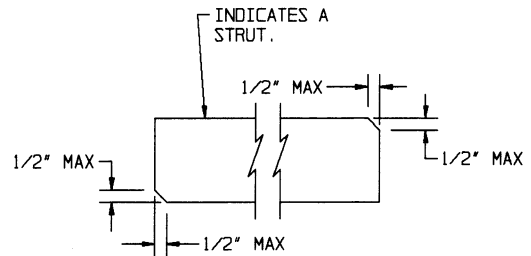
PLYWOOD - - - - - : COMMERCIAL ITEM DESCRIPTION A-A-55057, TYPE A, CONSTRUCTION AND INDUSTRIAL PLYWOOD, INTERIOR WITH EXTERIOR GLUE, GRADE C-D. IF SPECIFIED GRADE IS NOT AVAILABLE, A BETTER INTERIOR OR AN EXTERIOR GRADE MAY BE SUBSTITUTED.

(CONTINUED AT RIGHT)



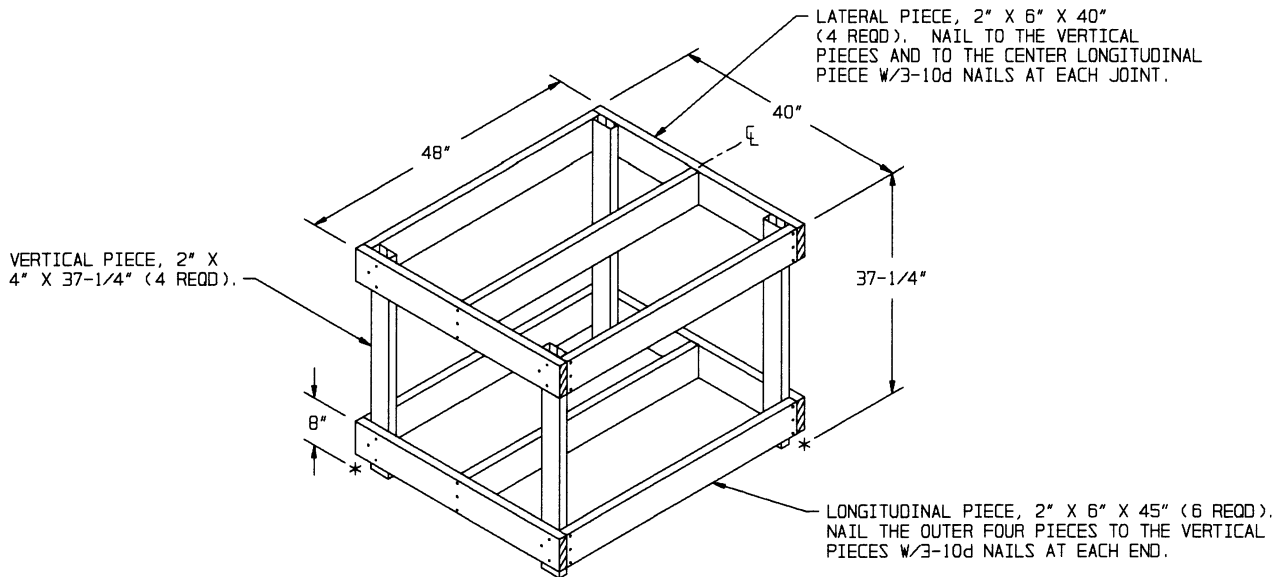
PALLET UNIT

UNIT WEIGHT - - - - - 2,248 POUNDS (APPROX)
 CUBE - - - - - 41.4 CUBIC FEET



BEVEL-CUT

IF DESIRED, EACH END OF A STRUT MAY BE BEVEL-CUT AS SHOWN ABOVE TO FACILITATE THE ACHIEVEMENT OF A TIGHT CENTER-OF-LOAD FIT.



FILLER ASSEMBLY

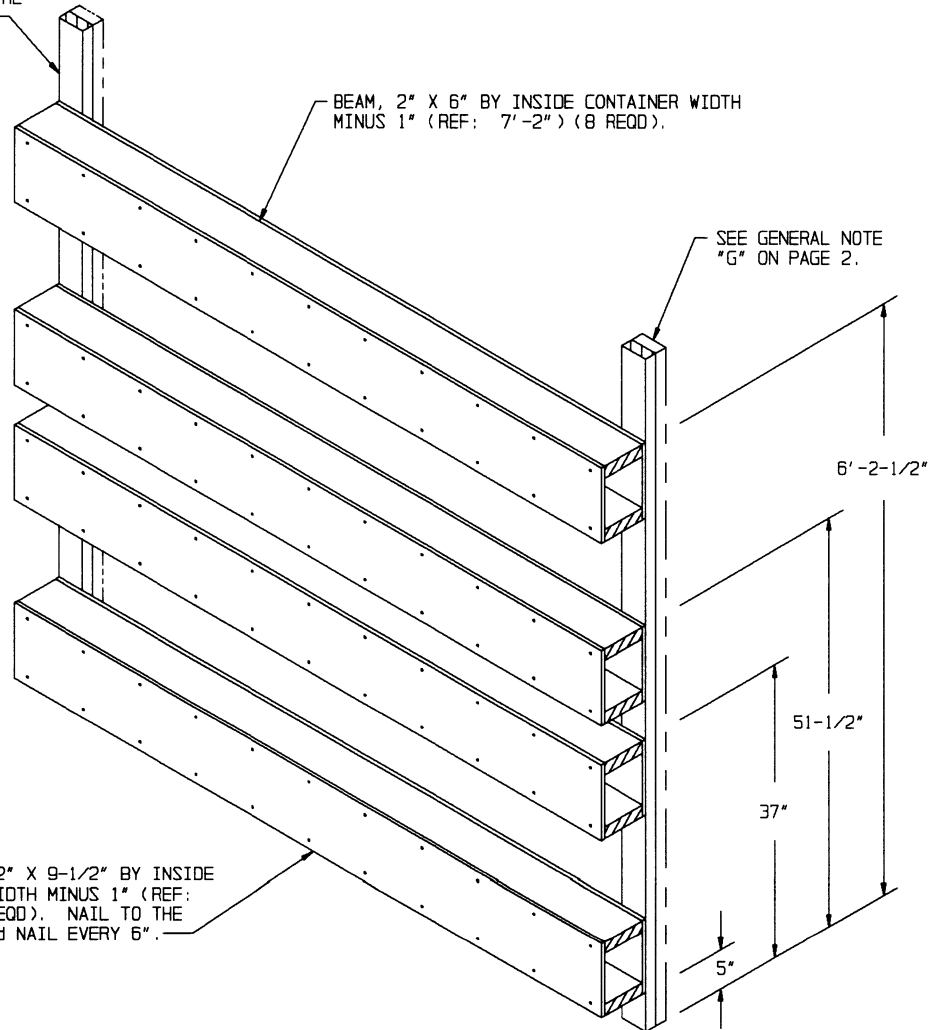
THE ASSEMBLY DEPICTED ABOVE IS FOR USE IN PLACE OF AN OMITTED PALLET UNIT. NO MORE THAN FOUR FILLER ASSEMBLIES MAY BE USED PER LOAD. DO NOT INSTALL A FILLER ASSEMBLY IMMEDIATELY ADJACENT TO ANOTHER FILLER ASSEMBLY.

BUFFER PIECE, 2" X 4" BY INSIDE
CONTAINER HEIGHT MINUS 1" (REF: 7'-1")
(2 REQD). NAIL THRU PLYWOOD INTO THE
BEAMS W/2-10d NAILS AT EACH JOINT.

BEAM, 2" X 6" BY INSIDE CONTAINER WIDTH
MINUS 1" (REF: 7'-2") (8 REQD).

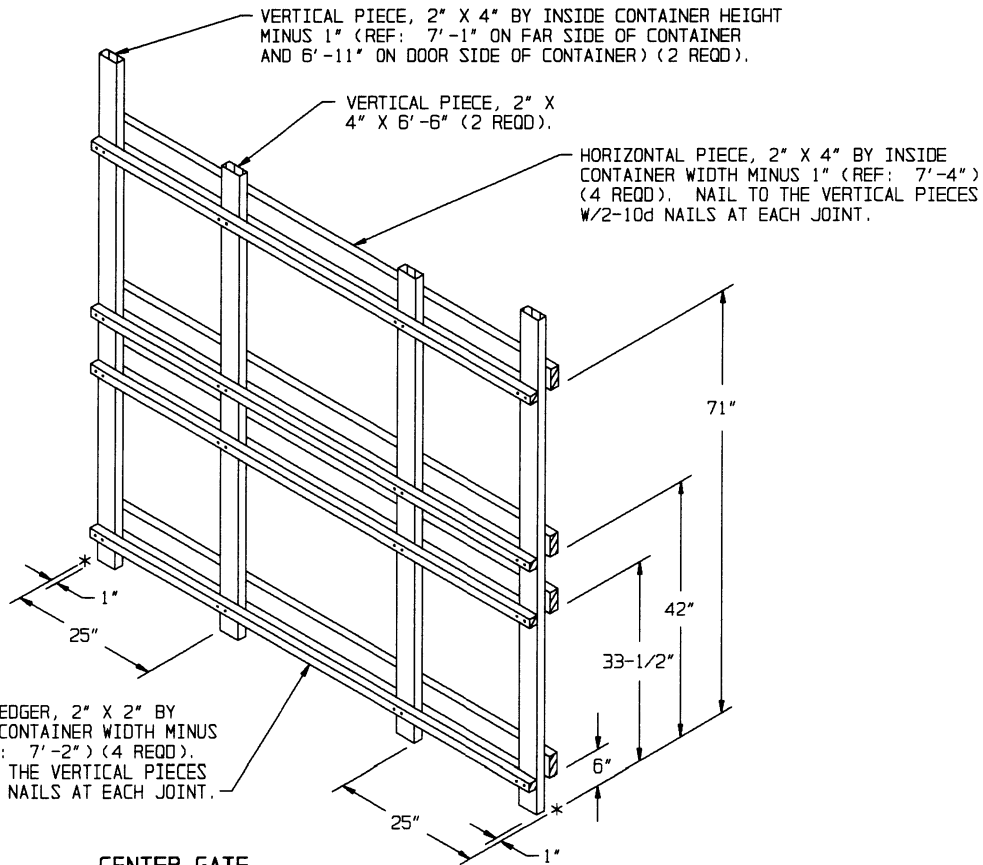
SEE GENERAL NOTE
"G" ON PAGE 2.

PLYWOOD, 1/2" X 9-1/2" BY INSIDE
CONTAINER WIDTH MINUS 1" (REF:
7'-2") (8 REQD). NAIL TO THE
BEAMS W/1-6d NAIL EVERY 6".



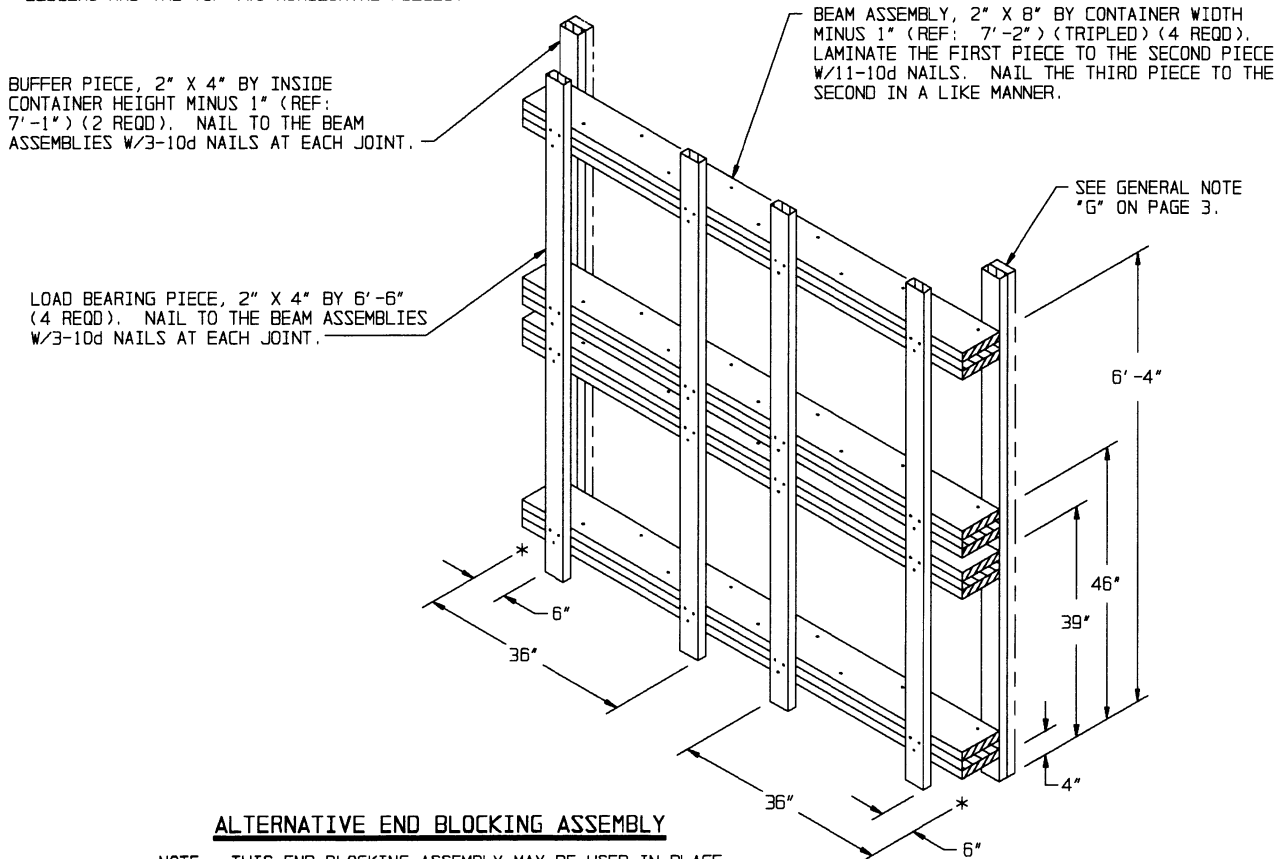
END BLOCKING ASSEMBLY

NOTE: FOR A ONE-HIGH LOAD, ELIMINATE THE TOP TWO BOX
BEAM ASSEMBLIES. A TWO LAYER LOAD MAY NOT EXCEED
45,600 POUNDS AND A ONE LAYER LOAD MAY NOT EXCEED
22,800 POUNDS.



CENTER GATE

FOR A ONE HIGH LOAD, REDUCE THE CENTER VERTICAL PIECES TO 42" AND ELIMINATE THE TOP TWO STRUT LEDGERS AND THE TOP TWO HORIZONTAL PIECES.



ALTERNATIVE END BLOCKING ASSEMBLY

NOTE: THIS END BLOCKING ASSEMBLY MAY BE USED IN PLACE OF THE END BLOCKING ASSEMBLY ON PAGE 5.