

APPROVED BY
BUREAU OF EXPLOSIVES



DATE 1-18-2008

LOADING AND BRACING* IN SIDE OPENING ISO CONTAINERS OF PROPELLING CHARGES PACKED IN CYLINDRICAL METAL CONTAINERS

M14 SERIES CONTAINER

INDEX

ITEM	PAGE(S)
GENERAL NOTES AND MATERIAL SPECIFICATIONS - - - - -	2
PALLET UNIT DETAILS - - - - -	3
18 UNIT LOAD - - - - -	4
16 UNIT LOAD - - - - -	5
DETAILS - - - - -	6-10

- LOADING AND BRACING SPECIFICATIONS SET FORTH WITHIN THIS DRAWING ARE APPLICABLE TO LOADS THAT ARE TO BE SHIPPED BY TRAILER/CONTAINER-ON-FLATCAR (T/COFC) RAIL CARRIER SERVICE. THESE SPECIFICATIONS MAY ALSO BE USED FOR LOADS THAT ARE TO BE MOVED BY MOTOR OR WATER CARRIERS.

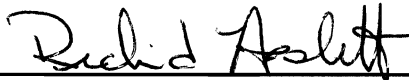
U.S. ARMY MATERIEL COMMAND DRAWING

APPROVED, U.S. ARMY
JOINT MUNITIONS COMMAND

CAUTION: VERIFY PRIOR TO USE AT WWW.DAC.ARMY.MIL THAT THIS IS
THE MOST CURRENT VERSION OF THIS DOCUMENT. THIS IS PAGE 1 OF 10.

DO NOT SCALE

OCTOBER 2007

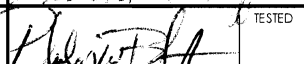


ENGINEER OR TECHNICIAN	BASIC REV.	LAURA FIEFFER
---------------------------	---------------	---------------

APPROVED BY ORDER OF COMMANDING GENERAL,
U.S. ARMY MATERIEL COMMAND


TRANSPORTATION ENGINEERING DIVISION		TESTED
---	--	--------



VALIDATION ENGINEERING DIVISION		TESTED
---------------------------------------	--	--------

CLASS	DIVISION	DRAWING	FILE
19	48	4264/3	15PM1003

U.S. ARMY DEFENSE AMMUNITION CENTER

ENGINEERING DIRECTORATE	
----------------------------	--

PROJECT CA 277/3-92

GENERAL NOTES

(GENERAL NOTES CONTINUED)

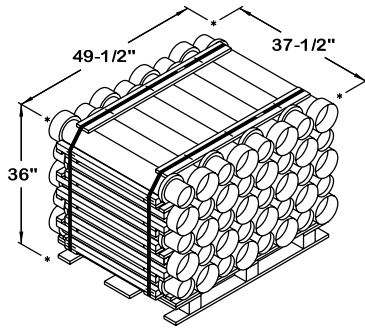
- A. THIS DOCUMENT HAS BEEN PREPARED AND ISSUED IN ACCORDANCE WITH AR 740-1 AND AUGMENTS TM 743-200-1 (CHAPTER 5).
- B. THE OUTLOADING PROCEDURES SPECIFIED IN THIS DRAWING ARE APPLICABLE TO LOADS OF PALLETIZED PROPELLING CHARGES PACKED IN M14 SERIES CYLINDRICAL METAL CONTAINERS. SUBSEQUENT REFERENCE TO PALLET UNIT HEREIN MEANS THE PALLET UNIT WITH PROPELLING CHARGES. SEE PAGE 3 AND AMC DRAWING 19-48-4042A/3-20PM1001 FOR DETAILS OF THE PALLET UNITS. CAUTION: REGARDLESS OF THE QUANTITY OF UNITS TO BE SHIPPED, THE "MAXIMUM GROSS WEIGHT" OF THE SIDE OPENING ISO CONTAINER MUST NOT BE EXCEEDED.
- C. THE LOADS AS SHOWN ARE BASED ON A 6,050 POUND 20' LONG BY 8' WIDE BY 8'-6" HIGH SIDE OPENING ISO CONTAINER WITH INSIDE DIMENSIONS OF 19'-5-1/4" LONG BY 89-3/4" WIDE BY 88" AND A MAXIMUM GROSS WEIGHT OF 52,910 POUNDS. THE LOAD IS DESIGNED FOR TRAILER/CONTAINER-ON-FLATCAR (T/COFC) SHIPMENT, HOWEVER, THE LOAD AS DESIGNED CAN ALSO BE MOVED BY MOTOR OR WATER CARRIERS. NOTICE: OTHER CONTAINERS OF THE SAME DESIGN CONFIGURATION CAN ALSO BE USED.
- D. WHEN LOADING THE UNITS, THEY ARE TO BE POSITIONED SO AS TO ACHIEVE A TIGHT LOAD (TIGHT AGAINST THE DUNNAGE ASSEMBLIES). THE UNBLOCKED SPACE ACROSS THE WIDTH OF A LOAD BAY IS NOT TO EXCEED 1-1/2". EXCESSIVE SLACK CAN BE ELIMINATED FROM A LOAD BY LAMINATING ADDITIONAL PIECES OF APPROPRIATE THICKNESS TO THE CRIB FILL OR SIDE FILL ASSEMBLIES. NAIL EACH ADDITIONAL PIECE TO THE HORIZONTAL OR LONGITUDINAL PIECE W/1 APPROPRIATELY SIZED NAIL EVERY 12". ADDITIONALLY, THE THICKNESS AND QUANTITY OF THE DUNNAGE LUMBER OR THE LENGTH OF THE LATERAL PIECES USED MAY BE ADJUSTED AS REQUIRED TO FACILITATE VARIANCE IN THE SIZE OF THE PALLET UNITS.
- E. DUNNAGE LUMBER SPECIFIED IS OF NOMINAL SIZE. FOR EXAMPLE, 1" X 6" MATERIAL IS ACTUALLY 3/4" THICK BY 5-1/2" WIDE AND 2" X 6" MATERIAL IS ACTUALLY 1-1/2" THICK BY 5-1/2" WIDE.
- F. A STAGGERED NAILING PATTERN WILL BE USED WHENEVER POSSIBLE WHEN NAILS ARE DRIVEN INTO JOINTS OF DUNNAGE ASSEMBLIES OR WHEN LAMINATING DUNNAGE. ADDITIONALLY, THE NAILING PATTERN FOR AN UPPER PIECE OF LAMINATED DUNNAGE WILL BE ADJUSTED AS REQUIRED SO THAT A NAIL FOR THAT PIECE WILL NOT BE DRIVEN THROUGH ONTO OR RIGHT BESIDE A NAIL IN A LOWER PIECE.
- G. IN SOME CONTAINERS THERE IS A SLOT AT THE CORNERS OF THE ENDWALLS. PIECES OF DUNNAGE MATERIAL MUST BE LAMINATED TO THE BUFFER PIECES ON THE END BLOCKING ASSEMBLIES TO PROVIDE A FLAT SURFACE FOR THE BUFFER PIECES. A PIECE OF 2" X 4", 2" X 3" OR A SPECIAL WIDTH PIECE CUT-TO-FIT CAN BE USED. THIS FILL PIECE WILL BE NAILED WITH ONE APPROPRIATELY SIZED NAIL EVERY 12". NOTE THAT SOME CONTAINERS ARE EQUIPPED WITH "TIE-BARS" IN THE CORNER SLOT, WHICH PRECLUDE THE USE OF A FULL HEIGHT FILL PIECE. WHEN "TIE-BARS" ARE PRESENT, THE FILL PIECE MUST BE INSTALLED IN SEGMENTS DESIGNED TO FIT BETWEEN THE "TIE-BARS" VERTICALLY. THE FILL PIECE(S) IS NOT REQUIRED WHEN THE CORNER PORTIONS OF THE CONTAINER ENDWALLS ARE SMOOTH AND FLAT. DO NOT ALLOW ANY DUNNAGE ASSEMBLY TO CONTACT THE CONTAINER ENDWALLS, ONLY THE CORNER POSTS OF THE CONTAINER SHOULD BE USED FOR LONGITUDINAL BLOCKING.

(CONTINUED AT RIGHT)

MATERIAL SPECIFICATIONS

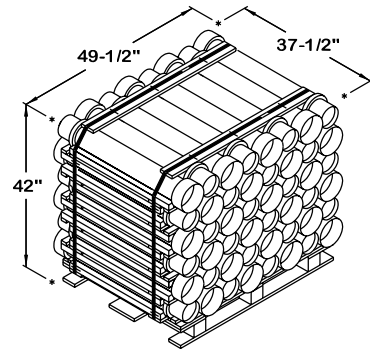
- LUMBER - - - - - -: SEE TM 743-200-1 (DUNNAGE LUMBER) AND VOLUNTARY PRODUCT STANDARD PS 20.
- NAILS - - - - - -: ASTM F1667; COMMON STEEL NAIL (NLCMS OR NLCMMS).
- PLYWOOD - - - - - -: COMMERCIAL ITEM DESCRIPTION A-A-55057, INDUSTRIAL PLYWOOD, INTERIOR WITH EXTERIOR GLUE, GRADE C-D. IF SPECIFIED GRADE IS NOT AVAILABLE, A BETTER INTERIOR OR AN EXTERIOR GRADE MAY BE SUBSTITUTED.
- WIRE, CARBON STEEL -: ASTM A853; ANNEALED AT FINISH, BLACK OXIDE FINISH, 0.0800" DIA, GRADE 1006 OR BETTER.
- ANTI-CHAFING MATERIAL - - - - - -: MIL-B-121 (OR EQUAL); NEUTRAL BARRIER MATERIAL.
- HARDBOARD - - - - - -: ANSI/AHA A135.4, CLASS 1.

- H. CAUTION: DO NOT NAIL DUNNAGE MATERIAL TO THE CONTAINER WALLS OR FLOOR. ALL NAILING WILL BE WITHIN THE DUNNAGE. PORTIONS OF THE CONTAINER DEPICTED WITHIN THIS DRAWING, SUCH AS THE SIDE DOORS, HAVE NOT BEEN SHOWN IN THE LOAD VIEW FOR CLARITY PURPOSES.
- J. CONVERSION TO METRIC EQUIVALENTS: DIMENSIONS WITHIN THIS DOCUMENT ARE EXPRESSED IN INCHES AND WEIGHTS ARE EXPRESSED IN POUNDS. WHEN NECESSARY, THE METRIC EQUIVALENTS MAY BE COMPUTED ON THE BASIS OF ONE INCH EQUALS 25.4MM AND ONE POUND EQUALS 0.454 KG.
- K. MAXIMUM LOAD WEIGHT CRITERIA:
 THE MAXIMUM LOAD WEIGHTS ARE CONTROLLED BY EQUIPMENT CAPABILITY FACTORS. ALTHOUGH THE HEAVIEST MAXIMUM LOADS ARE DELINEATED IN THE LOAD VIEWS, PROVISIONS ARE INCLUDED WITHIN THIS DRAWING SO THAT THE BASIC LOADS CAN BE ADJUSTED TO SATISFY A LESSER QUANTITY OF LADING UNITS. DEPENDING ON TRANSPORTATION ROUTING, IT MAY BE NECESSARY TO REDUCE THE LOAD WEIGHT TO SATISFY "WEIGHT LAWS" OF CERTAIN STATES. ALSO, IT MAY BE NECESSARY TO REDUCE THE LOAD WEIGHT TO SATISFY OTHER WEIGHT RESTRICTIONS IMPOSED ON THE INTERMODAL CONTAINER SYSTEM.
- L. REQUIREMENTS CITED WITHIN THE ASSOCIATION OF AMERICAN RAILROADS (AAR) INTERMODAL LOADING GUIDE APPLY WHEN THE SHIPMENT MOVES BY TRAILER/CONTAINER-ON-FLATCAR (T/COFC). SPECIAL T/COFC NOTES FOLLOW:
 - 1. A LOADED CONTAINER MUST BE ON A CHASSIS EQUIPPED WITH TWO BOGIE ASSEMBLIES WHEN BEING MOVED IN TOFC SERVICE.
 - 2. THE LOAD LIMIT OF A T/COFC RAILCAR MUST NOT BE EXCEEDED, NOR WILL A CAR BE LOADED SO THAT THE TRUCK UNDER ONE END OF THE CAR CARRIES MORE THAN ONE-HALF OF THE LOAD LIMIT FOR THAT CAR.
- M. DURING INTRASTATE AND/OR INTERSTATE MOVES BY MOTOR CARRIER, A PROPER CHASSIS OR MODIFIED FLATBED TRAILER MUST BE USED TO PRECLUDE VIOLATION OF ONE OR MORE "WEIGHT LAWS" APPLICABLE TO THE STATE OR STATES INVOLVED.
- N. WHETHER A CONTAINER IS FULL OR IS LOADED WITH A REDUCED QUANTITY OF LADING UNITS, THE LENGTHWISE CENTER OF GRAVITY OF THE LOAD MUST BE WITHIN 12", IN EITHER DIRECTION, OF THE MID-POINT OF THE CONTAINER.
- O. THE QUANTITY OF PALLET UNITS SHOWN IN THE LOADS ON PAGES 4 AND 5 MAY BE REDUCED FOR SHIPMENT, IF DESIRED. SEE THE FILLER ASSEMBLY ON PAGE 10.
- P. THE CONFIGURATION SHOWN IN THE LOAD ON PAGE 4 IS APPLICABLE TO THE ALTERNATED CONTAINERS PALLET UNITS ONLY, EITHER BASIC OR INCREASED HEIGHT. THE CONFIGURATION SHOWN IN THE LOAD ON PAGE 5 IS APPLICABLE TO ANY OF THE PALLET UNITS SHOWN ON PAGE 3.
- Q. IF THE LOAD ON PAGE 5 IS USED TO SHIP ALTERNATED CONTAINER PALLET UNITS, ANTI-CHAFING MUST BE INSTALLED BETWEEN THE SIDE OPENING CONTAINER AND THE PALLET UNITS. IF FIBERBOARD IS USED AS ANTI-CHAFING, AFFIX (STRAP TAPE, ETC.) THE FIBERBOARD TO THE SIDEWALL OR THE PALLET UNIT SECURELY. PLYWOOD OR HARDBOARD MAY ALSO BE USED AS ANTI-CHAFING MATERIAL, AS LONG AS IT IS SECURED TO PREVENT UNDUE MOVEMENT. THE SIDE FILL ASSEMBLIES DEPICTED ON PAGE 10 MAY ALSO BE USED FOR ANTI-CHAFING IN PLACE OF THE FIBERBOARD, IF SPACE PERMITS.



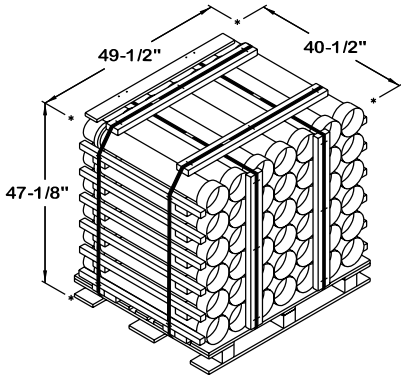
ALTERNATED CONTAINERS (BASIC HEIGHT)

CONTAINER - - - - - 40 EACH @ 29 LBS (APPROX)
 CUBE - - - - - 38.7 CU FT (APPROX)
 GROSS WEIGHT - - - - - 1,304 LBS (APPROX)



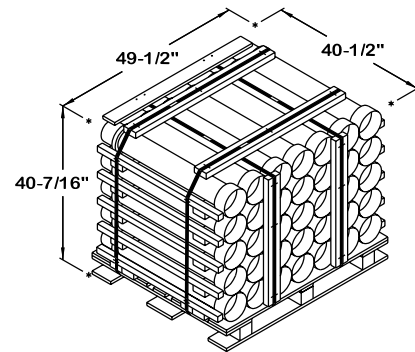
ALTERNATED CONTAINERS (INCREASED HEIGHT)

CONTAINER - - - - - 48 EACH @ 29 LBS (APPROX)
 CUBE - - - - - 45.1 CU FT (APPROX)
 GROSS WEIGHT - - - - - 1,553 LBS (APPROX)



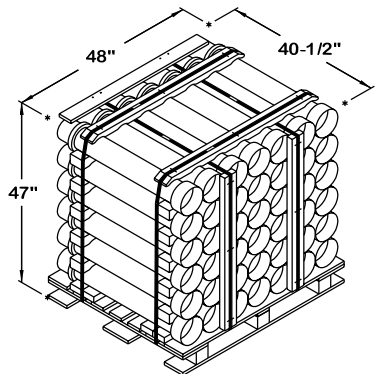
FLAT DUNNAGE (BASIC HEIGHT)

CONTAINER - - - - - 42 EACH @ 29 LBS (APPROX)
 CUBE - - - - - 54.7 CU FT (APPROX)
 GROSS WEIGHT - - - - - 1,433 LBS (APPROX)



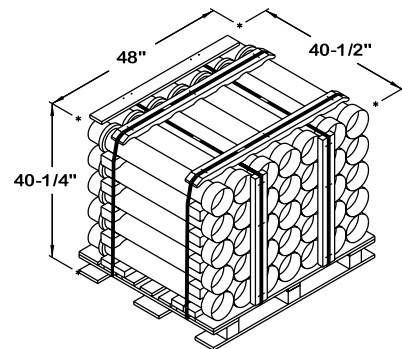
FLAT DUNNAGE (DECREASED HEIGHT)

CONTAINER - - - - - 35 EACH @ 29 LBS (APPROX)
 CUBE - - - - - 46.9 CU FT (APPROX)
 GROSS WEIGHT - - - - - 1,217 LBS (APPROX)



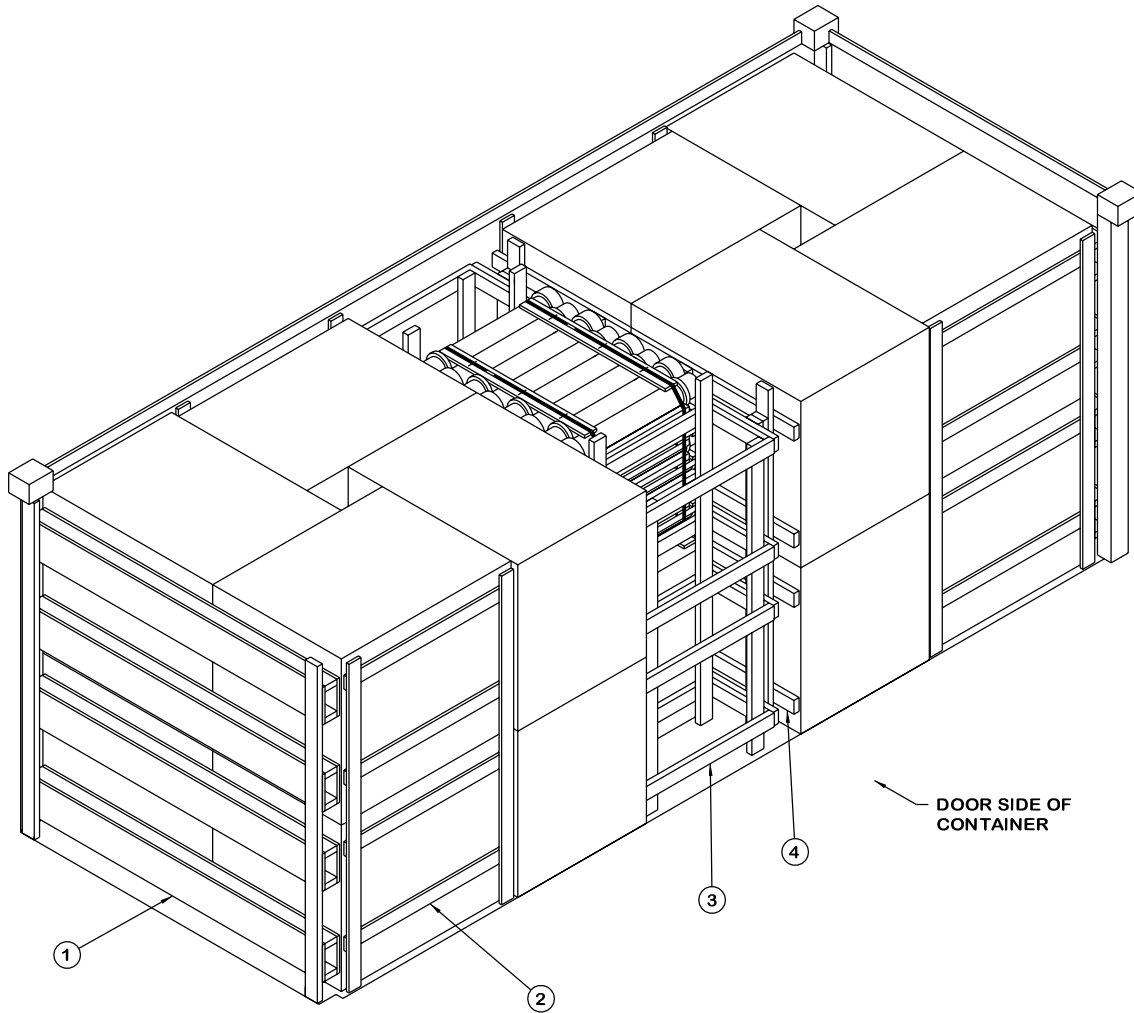
ROUTED DUNNAGE (BASIC HEIGHT)

CONTAINER - - - - - 42 EACH @ 29 LBS (APPROX)
 CUBE - - - - - 52.9 CU FT (APPROX)
 GROSS WEIGHT - - - - - 1,435 LBS (APPROX)



ROUTED DUNNAGE (DECREASED HEIGHT)

CONTAINER - - - - - 35 EACH @ 29 LBS (APPROX)
 CUBE - - - - - 45.3 CU FT (APPROX)
 GROSS WEIGHT - - - - - 1,216 LBS (APPROX)



ISOMETRIC VIEW

KEY NUMBERS

- ① END BLOCKING ASSEMBLY (2 REQD). SEE THE DETAIL ON PAGE 9.
- ② SIDE FILL ASSEMBLY (4 REQD). SEE THE DETAIL ON PAGE 10.
- ③ CRIB FILL ASSEMBLY A (2 REQD). SEE THE DETAIL ON PAGE 6.
- ④ CENTER GATE A (1 REQD). SEE THE DETAIL ON PAGE 6.

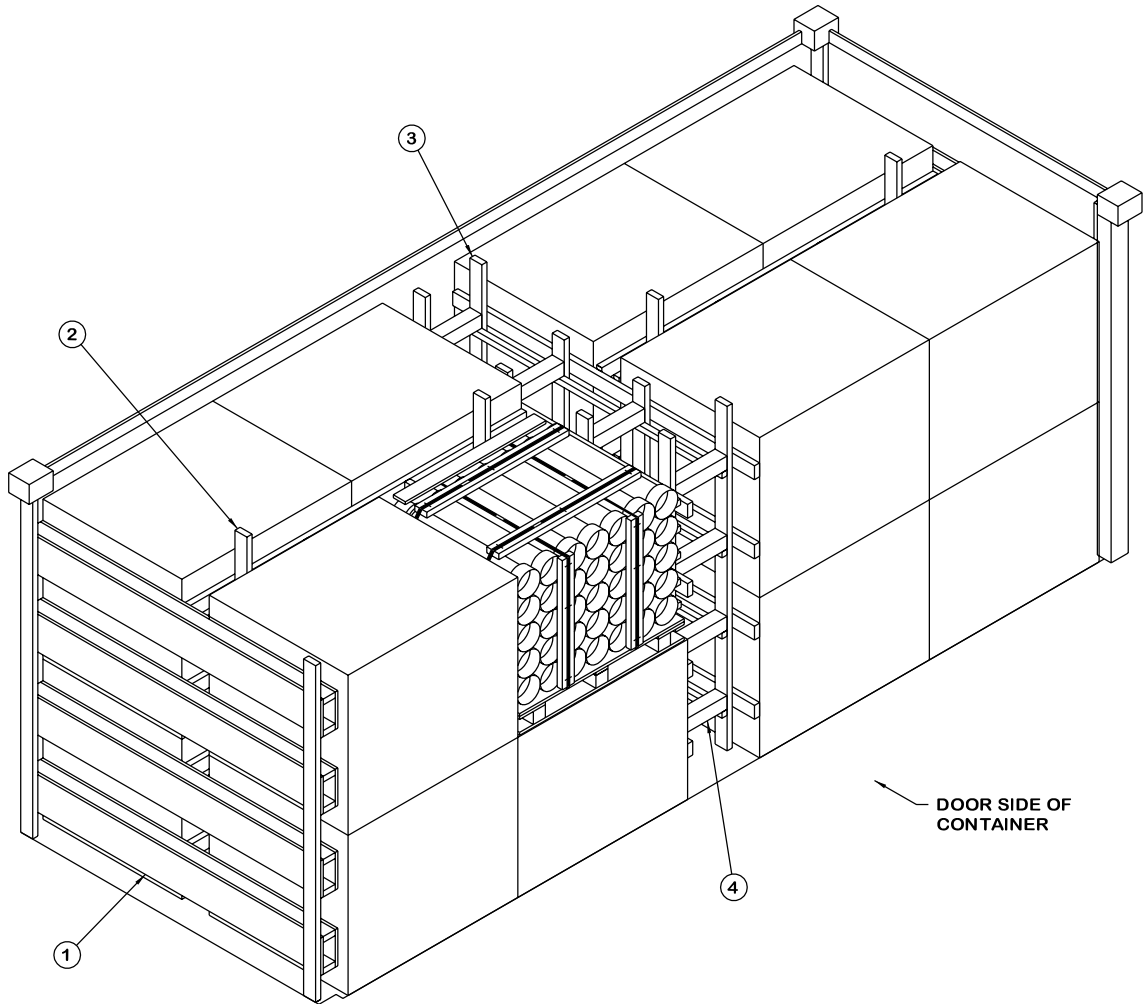
* THE LOAD AS SHOWN DEPICTS THE ALTERNATED CONTAINERS (INCREASED HEIGHT) PALLET UNIT. THE PROCEDURES DEPICTED ABOVE MAY ALSO BE USED FOR LOADING THE ALTERNATED CONTAINERS (BASIC HEIGHT) PALLET UNIT. THE BILL OF MATERIAL WILL VARY SLIGHTLY DEPENDING ON THE PALLET UNIT LOADED.

BILL OF MATERIAL

LUMBER	LINEAR FEET	BOARD FEET
2" X 4"	409	272
NAILS	NO. REQD	POUNDS
6d (2")	416	2-1/2
10d (3")	304	4-3/4
PLYWOOD, 3/4" - - - 90.78 SQ FT REQD - - - 187.23 LBS		

LOAD AS SHOWN *

ITEM	QUANTITY	WEIGHT (APPROX)
PALLET UNIT - - - - -	18 - - - - -	23,472 LBS
DUNNAGE - - - - -	- - - - -	819 LBS
CONTAINER - - - - -	- - - - -	6,050 LBS
TOTAL WEIGHT - - - - -		30,341 LBS (APPROX)



ISOMETRIC VIEW

KEY NUMBERS

- ① END BLOCKING ASSEMBLY (2 REQD). SEE THE DETAIL ON PAGE 9.
- ② CRIB FILL ASSEMBLY B (2 REQD). SEE THE DETAIL ON PAGE 8.
- ③ CENTER GATE B (2 REQD). SEE THE DETAIL ON PAGE 7.
- ④ STRUT, 4" X 4" BY CUT TO FIT (REF: 15") (16 REQD). TOENAIL TO THE CENTER GATES W/2-12d NAILS AT EACH END. SEE THE "BEVEL-CUT" DETAIL ON PAGE 8.

* THE LOAD AS SHOWN DEPICTS THE FLAT DUNNAGE (DECREASED HEIGHT) PALLET UNIT. THE PROCEDURES DEPICTED ABOVE MAY ALSO BE USED FOR LOADING ANY OF THE OTHER PALLET UNITS DEPICTED ON PAGE 3. THE BILL OF MATERIAL WILL VARY SLIGHTLY DEPENDING ON THE PALLET UNIT LOADED. SEE GENERAL NOTE "Q" ON PAGE 2.

BILL OF MATERIAL		
LUMBER	LINEAR FEET	BOARD FEET
1" X 4"	66	22
2" X 2"	52	18
2" X 4"	442	295
4" X 4"	20	27
NAILS	NO. REQD	POUNDS
6d (2")	416	2-1/2
10d (3")	320	5
PLYWOOD, 3/4" - - - 90.78 SQ FT REQD - - - 187.23 LBS		

LOAD AS SHOWN *

ITEM	QUANTITY	WEIGHT (APPROX)
PALLET UNIT - - - - -	16 - - - - -	19,472 LBS
DUNNAGE - - - - -	- - - - -	917 LBS
CONTAINER - - - - -	- - - - -	6,050 LBS
TOTAL WEIGHT - - - - -		26,439 LBS (APPROX)

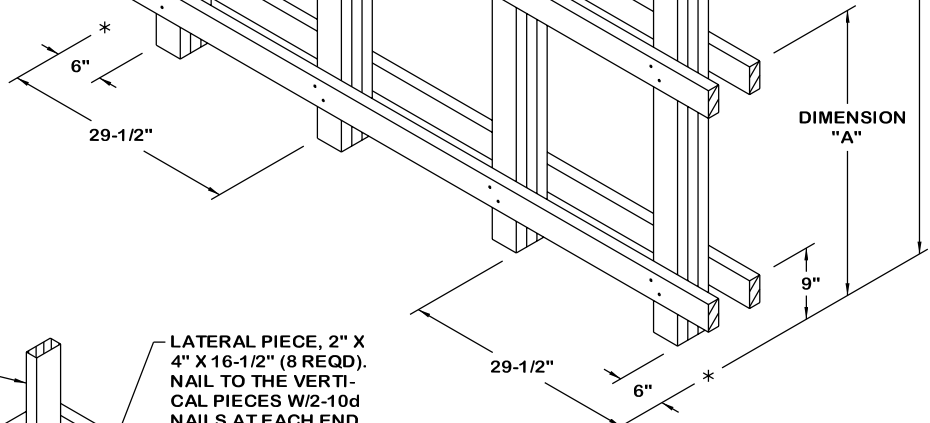
HORIZONTAL PIECE, 2" X 4" BY BY INSIDE CONTAINER WIDTH MINUS 1" (REF: 7'-4") (8 REQD). NAIL TO THE VERTICAL PIECES W/2-10d NAILS AT EACH JOINT.

VERTICAL PIECE, 2" X 4" BY DIMENSION "C" (10 REQD). LAMINATE THE SECOND PIECE TO THE FIRST VERTICAL PIECE W/6-10d NAILS. LAMINATE THE THIRD PIECE TO THE SECOND IN A LIKE MANNER.

VERTICAL PIECE, 2" X 4" BY INSIDE CONTAINER HEIGHT MINUS 1" (REF: 7'-3") (2 REQD).

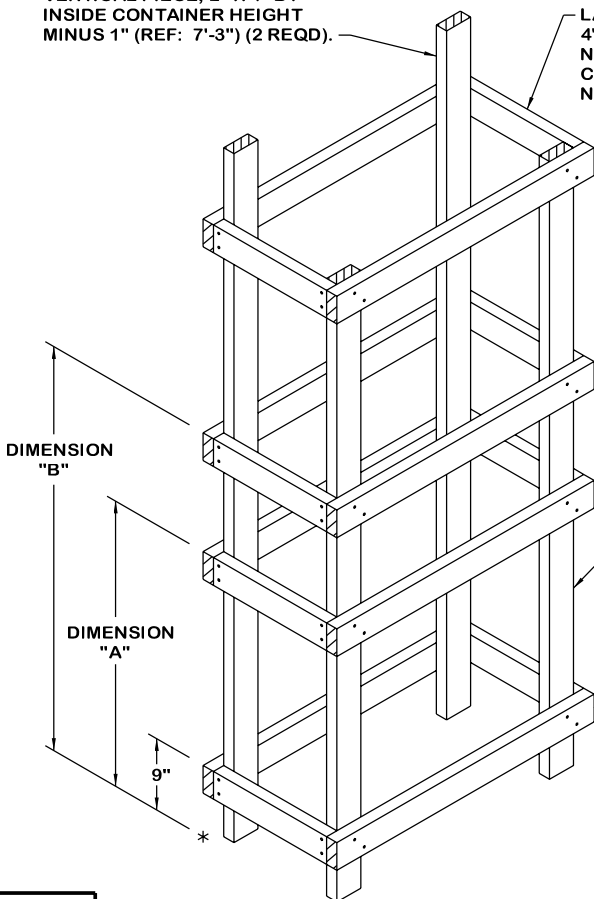
CENTER GATE A

REFER TO THE CHART BELOW FOR DIMENSION VALUES. FOR A ONE HIGH LOAD ELIMINATE THE TOP FOUR HORIZONTAL PIECES AND REDUCE THE LENGTH OF THE SHORTER VERTICAL PIECES TO DIMENSION "A". NOTE THAT THE QUANTITY AND THICKNESS OF THE VERTICAL PIECES USED WILL BE BASED ON THE VOID TO BE FILLED.



VERTICAL PIECE, 2" X 4" BY INSIDE CONTAINER HEIGHT MINUS 1" (REF: 7'-3") (2 REQD).

LATERAL PIECE, 2" X 4" X 16-1/2" (8 REQD). NAIL TO THE VERTICAL PIECES W/2-10d NAILS AT EACH END.



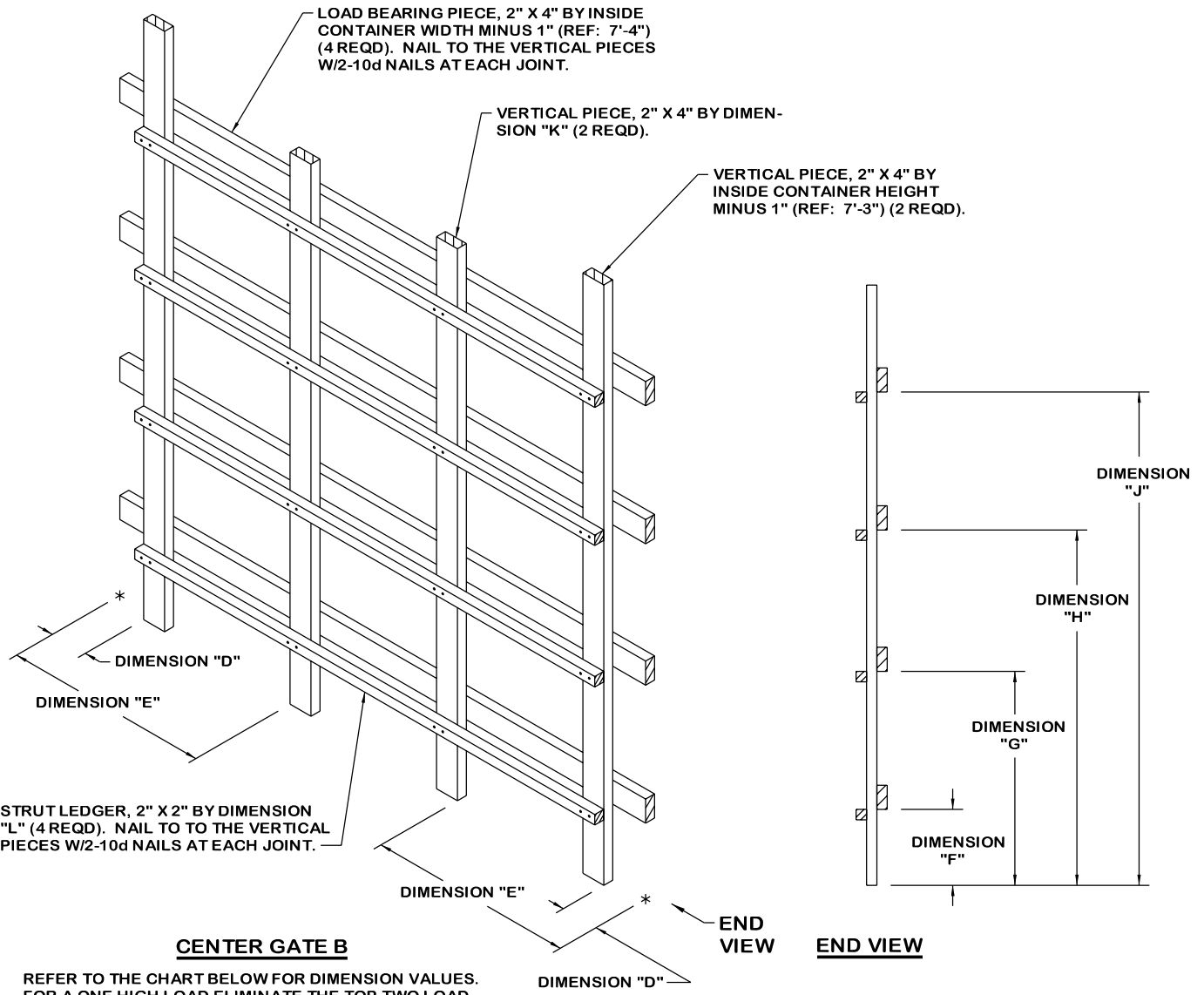
PALLET UNIT	DIMENSION		
	"A"	"B"	"C"
ALTERNATED INCREASED	36"	51"	6' -6"
ALTERNATED BASIC	30"	45"	66"

VERTICAL PIECE, 2" X 4" BY DIMENSION "C" (2 REQD).

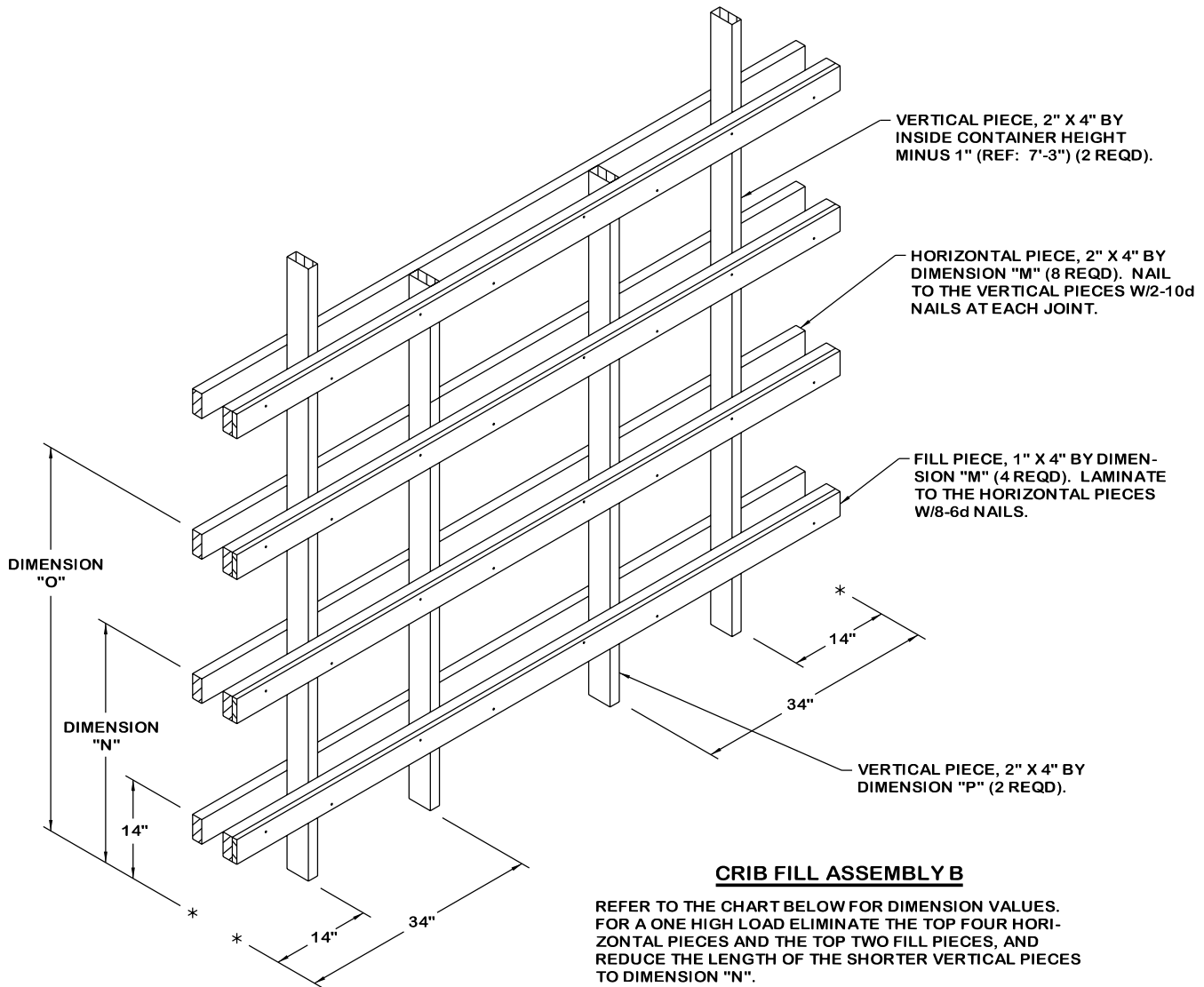
LONGITUDINAL PIECE, 2" X 4" X 37-1/2" (8 REQD). NAIL TO THE VERTICAL PIECES W/2-10d NAILS AT EACH JOINT.

CRIB FILL ASSEMBLY A

REFER TO THE CHART ABOVE FOR DIMENSION VALUES. FOR A ONE HIGH LOAD ELIMINATE THE TOP FOUR LONGITUDINAL PIECES AND THE TOP FOUR LATERAL PIECES AND REDUCE THE LENGTH OF THE SHORTER VERTICAL PIECES TO DIMENSION "A". NOTE THAT THE LENGTH OF THE LATERAL PIECES USED WILL BE BASED ON THE VOID TO BE FILLED.



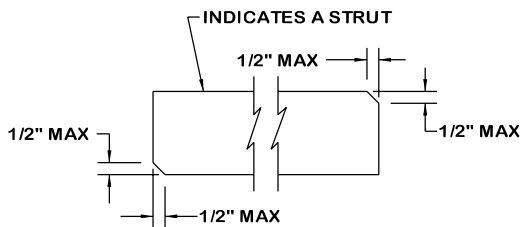
PALLET UNIT	DIMENSION							
	"D"	"E"	"F"	"G"	"H"	"J"	"K"	"L"
ALTERNATED INCREASED	4-1/2"	28"	10"	33"	52"	6'-3-1/2"	7'-0"	6'-7"
ALTERNATED BASIC	4-1/2"	28"	10"	28"	46"	63-1/2"	72"	6'-7"
ROUTED BASIC	4"	30"	10-1/2"	7"	---	---	46"	6'-8"
ROUTED DECREASED	4"	30"	10-1/2"	30-1/2"	50-1/2"	70-1/2"	6'-7"	6'-8"
FLAT BASIC	5-1/2"	30"	11"	38"	---	---	47"	6'-5"
FLAT DECREASED	5-1/2"	30"	11"	31"	51-1/2"	71-1/2"	6'-5"	6'-5"



CRIB FILL ASSEMBLY B

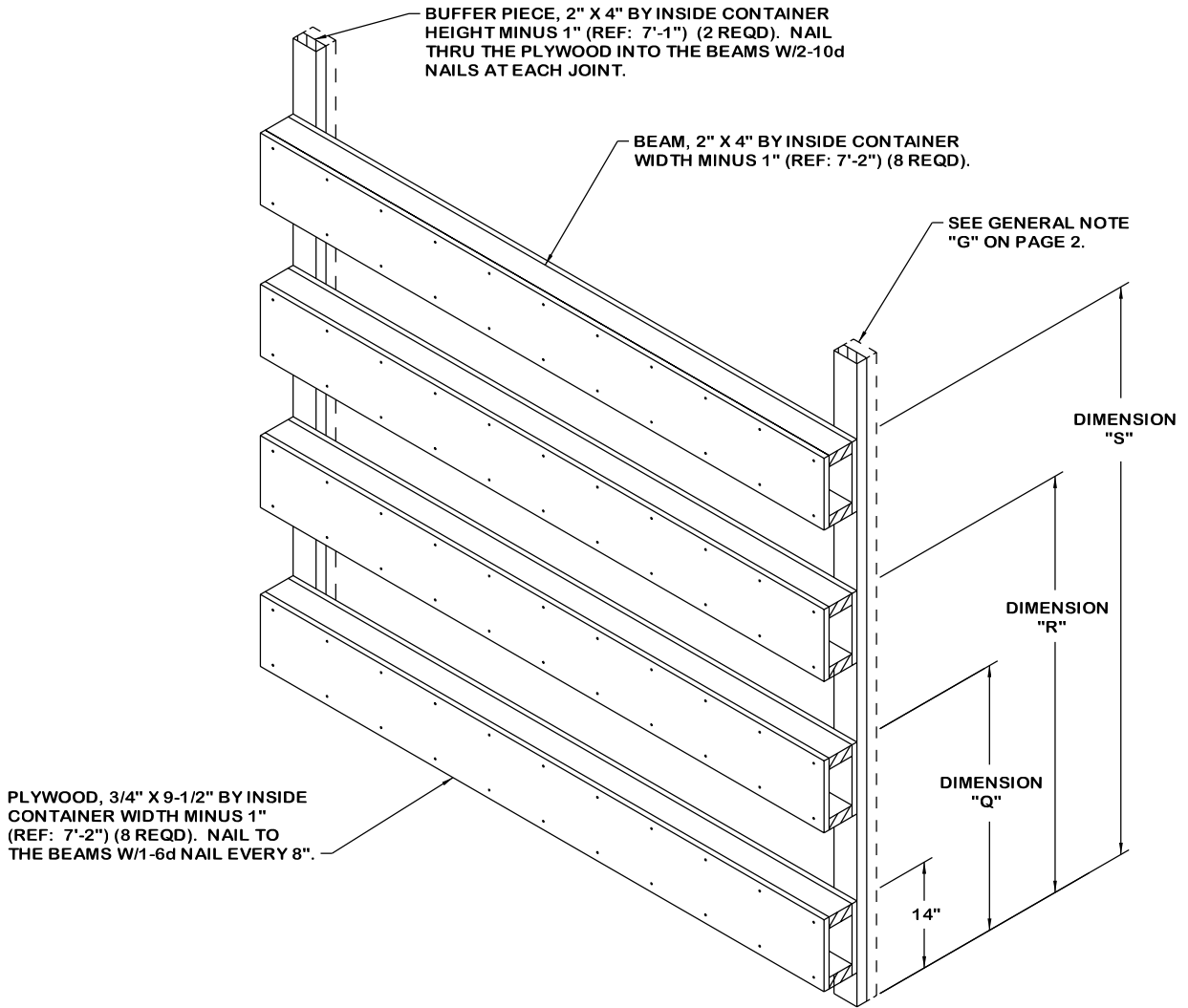
REFER TO THE CHART BELOW FOR DIMENSION VALUES. FOR A ONE HIGH LOAD ELIMINATE THE TOP FOUR HORIZONTAL PIECES AND THE TOP TWO FILL PIECES, AND REDUCE THE LENGTH OF THE SHORTER VERTICAL PIECES TO DIMENSION "N".

PALLET UNIT	DIMENSION			
	"M"	"N"	"O"	"P"
ALTERNATED INCREASED	8' -3"	37"	55-1/2"	6' -5-1/2"
ALTERNATED BASIC	8' -3"	31-1/2"	49-1/2"	67-1/2"
ROUTED BASIC	8' -0"	40-1/2"	---	40-1/2"
ROUTED DECREASED	8' -0"	34"	54"	6' -2"
FLAT BASIC	8' -3"	40-1/2"	---	40-1/2"
FLAT DECREASED	8' -3"	34"	54"	6' -2"



BEVEL-CUT

IF DESIRED, EACH END OF A STRUT MAY BE BEVEL-CUT AS SHOWN ABOVE TO FACILITATE THE ACHIEVEMENT OF A TIGHT CENTER OF LOAD FIT.



END BLOCKING ASSEMBLY

REFER TO THE CHART BELOW FOR DIMENSION VALUES. FOR A ONE HIGH LOAD ELIMINATE THE TOP TWO BEAM ASSEMBLIES.

PALLET UNIT	DIMENSION		
	"Q"	"R"	"S"
ALTERNATED INCREASED	37"	57"	6' -7"
ALTERNATED BASIC	35"	51"	71"
ROUTED BASIC	40-1/2"	---	---
ROUTED DECREASED	34"	55"	6' -2"
FLAT BASIC	41"	---	---
FLAT DECREASED	35"	55"	6' -3"

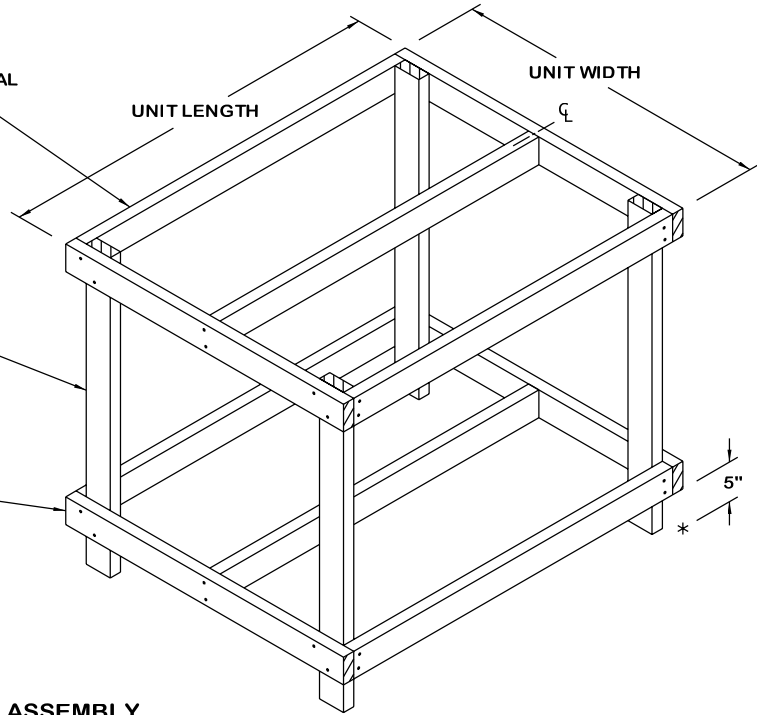
LATERAL PIECE, 2" X 4" BY UNIT LENGTH MINUS 3" (4 REQD). NAIL TO THE VERTICAL PIECES W/2-10d NAILS AT EACH END.

UNIT LENGTH

UNIT WIDTH

VERTICAL PIECE, 2" X 4" BY UNIT HEIGHT (4 REQD).

LONGITUDINAL PIECE, 2" X 4" BY UNIT WIDTH (4 REQD). NAIL TO THE VERTICAL PIECES AND THE CENTER LATERAL PIECE W/2-10d NAILS AT EACH JOINT.

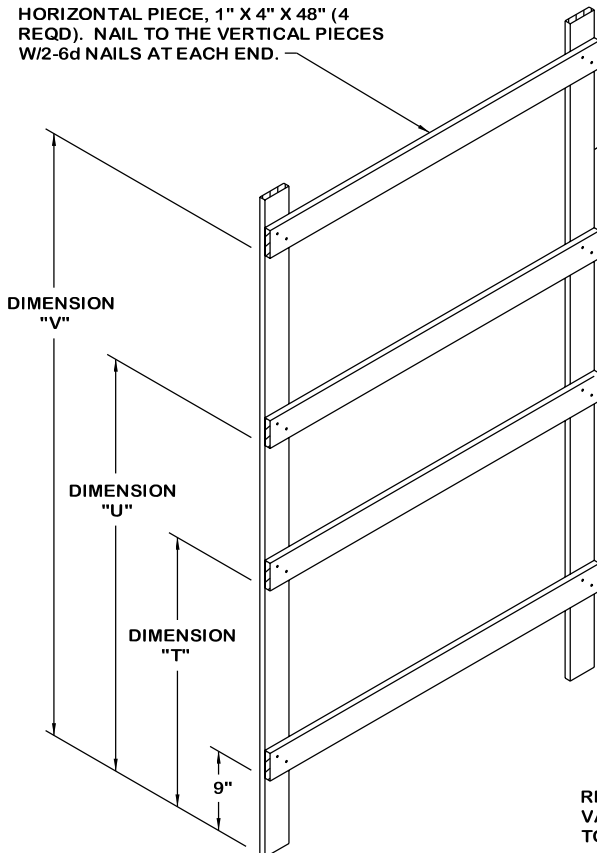


FILLER ASSEMBLY

THIS ASSEMBLY IS FOR USE IN PLACE OF AN OMITTED PALLET UNIT. NO MORE THAN THREE FILLER ASSEMBLIES MAY BE USED PER TWO-HIGH LOAD, AND NO MORE THAN ONE FILLER ASSEMBLY MAY BE USED PER ONE-HIGH LOAD. DO NOT INSTALL A FILLER ASSEMBLY IMMEDIATELY ADJACENT TO ANOTHER FILLER ASSEMBLY, OR TO A CENTER GATE. WIRE TIE TO ADJACENT PALLET UNIT(S) IN TWO PLACES WITH 0.0800" DIA WIRE.

HORIZONTAL PIECE, 1" X 4" X 48" (4 REQD). NAIL TO THE VERTICAL PIECES W/2-6d NAILS AT EACH END.

VERTICAL PIECE, 1" X 4" BY INSIDE CONTAINER HEIGHT MINUS 1" (REF: 7'-1" ON FAR SIDE OF CONTAINER, 6'-11" ON DOOR SIDE OF CONTAINER) (2 REQD).



PALLET UNIT	DIMENSION		
	"T"	"U"	"V"
ALTERNATED INCREASED	34"	52"	6' - 4"
ALTERNATED BASIC	28"	46"	64"

SIDE FILL ASSEMBLY

REFER TO THE CHART ABOVE FOR DIMENSION VALUES. FOR A ONE HIGH LOAD ELIMINATE THE TOP TWO HORIZONTAL PIECES.