

UNITIZATION PROCEDURES FOR
 FUTURE ARMOR TILE, PACKED
 VARIOUS QUANTITIES PER METAL
 SHIPPING AND STORAGE CONTAIN-
 ER, UNITIZED 4 CONTAINERS PER
 37-1/4" X 63-1/2" SPECIAL
 PALLET; APPROX CONTAINER SIZE
 27-1/4" L X 13-3/4" W X
 13-7/16" H

DISTRIBUTION STATEMENT A.

APPROVED FOR PUBLIC RELEASE;
 DISTRIBUTION IS UNLIMITED.

U. S. ARMY MATERIEL COMMAND DRAWING			
APPROVED, U.S. ARMY INDUSTRIAL OPERATIONS COMMAND		DRAFTSMAN	BETTY J. KUNDERT
<i>David A. Perkins</i> AMSTA-AR-ESK		ENGINEER	SANDRA M. SCHULTZ
<i>Justin J. Fine</i> AMSTO-TM		SUPPLY ENGINEERING DIVISION	TRANSPORTATION ENGINEERING DIVISION
		<i>J. J. Muehle</i>	<i>W. R. Zwick</i>
APPROVED BY ORDER OF COMMANDING GENERAL, U.S. ARMY MATERIEL COMMAND		LOGISTICS ENGINEERING OFFICE	
<i>Arthur J. Rosadillo</i>		<i>William J. Ernst</i>	
U. S. ARMY DEFENSE AMMUNITION CENTER		MAY 1998	
		CLASS	DIVISION
		19	48
		DRAWING	FILE
		4221/7	20PM 1001

DO NOT SCALE

PALLET UNIT DATA				
ITEMS INCLUDED		HAZARD CLASS AND DIVISION ●		APPROX WEIGHT LBS
NSN	DDIC	OD CLASS	COMP GROUP	
1375- - -	-----	-.-	-	870

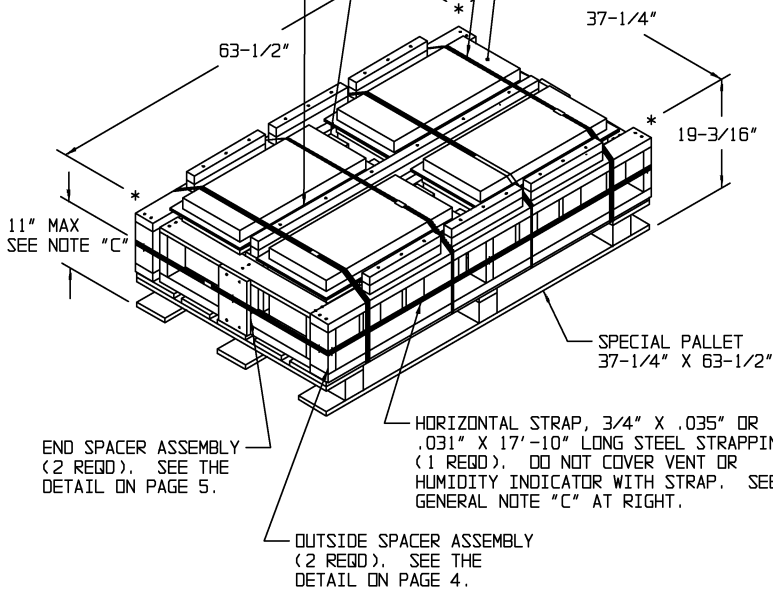
● HAZARD CLASSIFICATION DATA CONTAINED IN THE ABOVE CHART IS FOR GUIDANCE AND INFORMATIONAL PURPOSES ONLY. VERIFICATION OF THE SPECIFIED DATA SHOULD BE MADE BY CONSULTING THE MOST RECENT JOINT HAZARD CLASSIFICATION SYSTEM LISTING OR OTHER APPROVED LISTING(S).

TIEDOWN STRAP, 3/4" X .035" OR .031" X 9'-7"
LONG STEEL STRAPPING (4 REQD). SEE GENERAL
NOTE "D" AT RIGHT.

MIDDLE FILLER ASSEMBLY
(2 REQD). SEE THE DETAIL
ON PAGE 5.

MIDDLE SPACER ASSEMBLY
(1 REQD). SEE THE
DETAIL ON PAGE 4.

METAL SHIPPING AND STORAGE
CONTAINER, 27-1/4" L X
13-3/4" W X 13-7/16" H.
SEE GENERAL NOTE "M" AND
"N" AT RIGHT.



PALLET UNIT

SEE GENERAL NOTE "B" AT RIGHT.

4 CONTAINERS OF TILE AT 175 LBS	700 LBS (APPROX)
DUNNAGE	101 LBS
PALLET	69 LBS

TOTAL WEIGHT	870 LBS (APPROX)
CUBE	26.3 CU FT (APPROX)

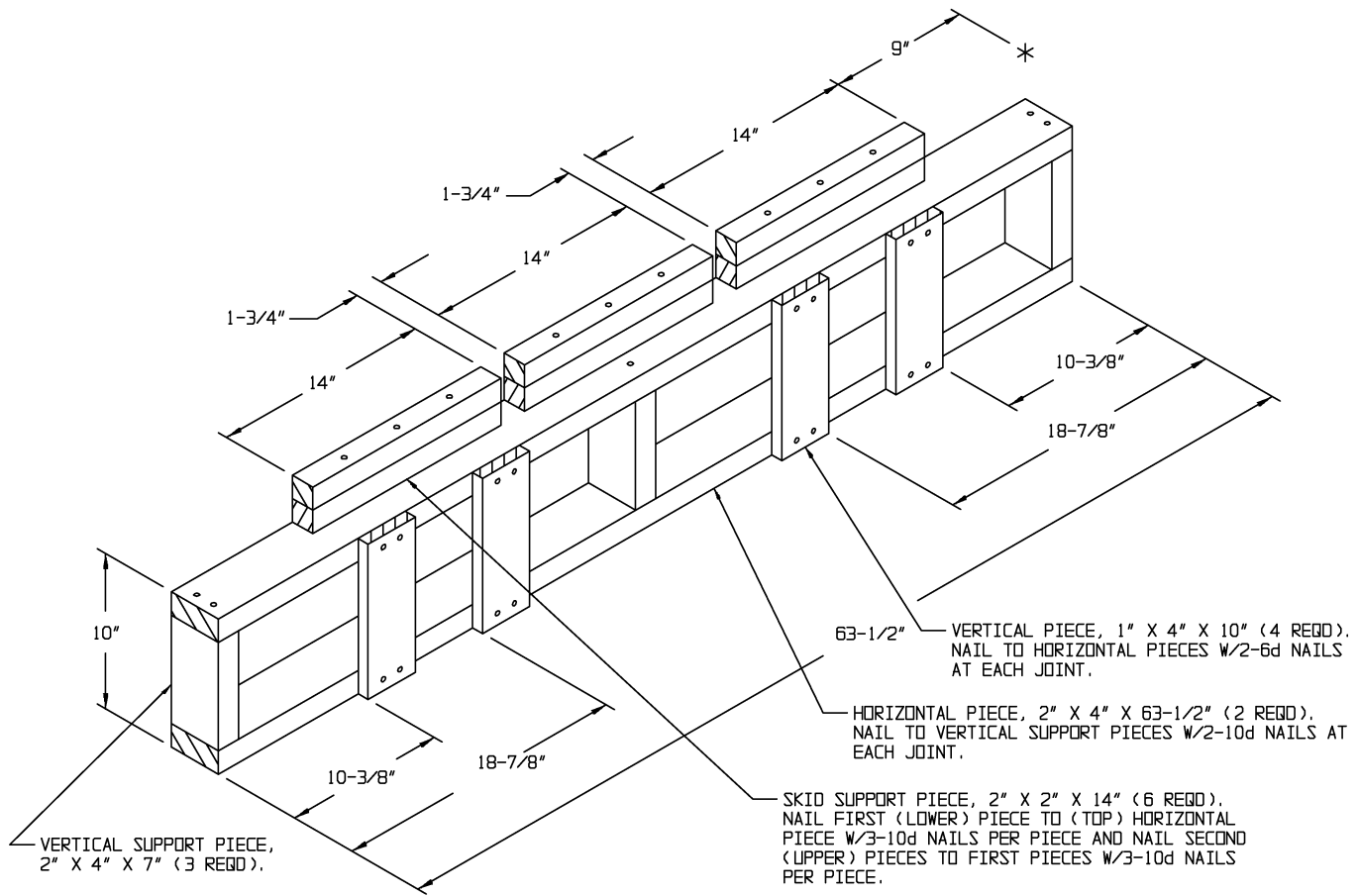
BILL OF MATERIAL

LUMBER	LINEAR FEET	BOARD FEET
1" X 4"	22.38	7.46
1" X 6"	.83	.42
2" X 2"	23.17	7.72
2" X 4"	50.50	33.66
NAILS	NO. REQD	POUNDS
6d	74	.44
10d	124	1.91

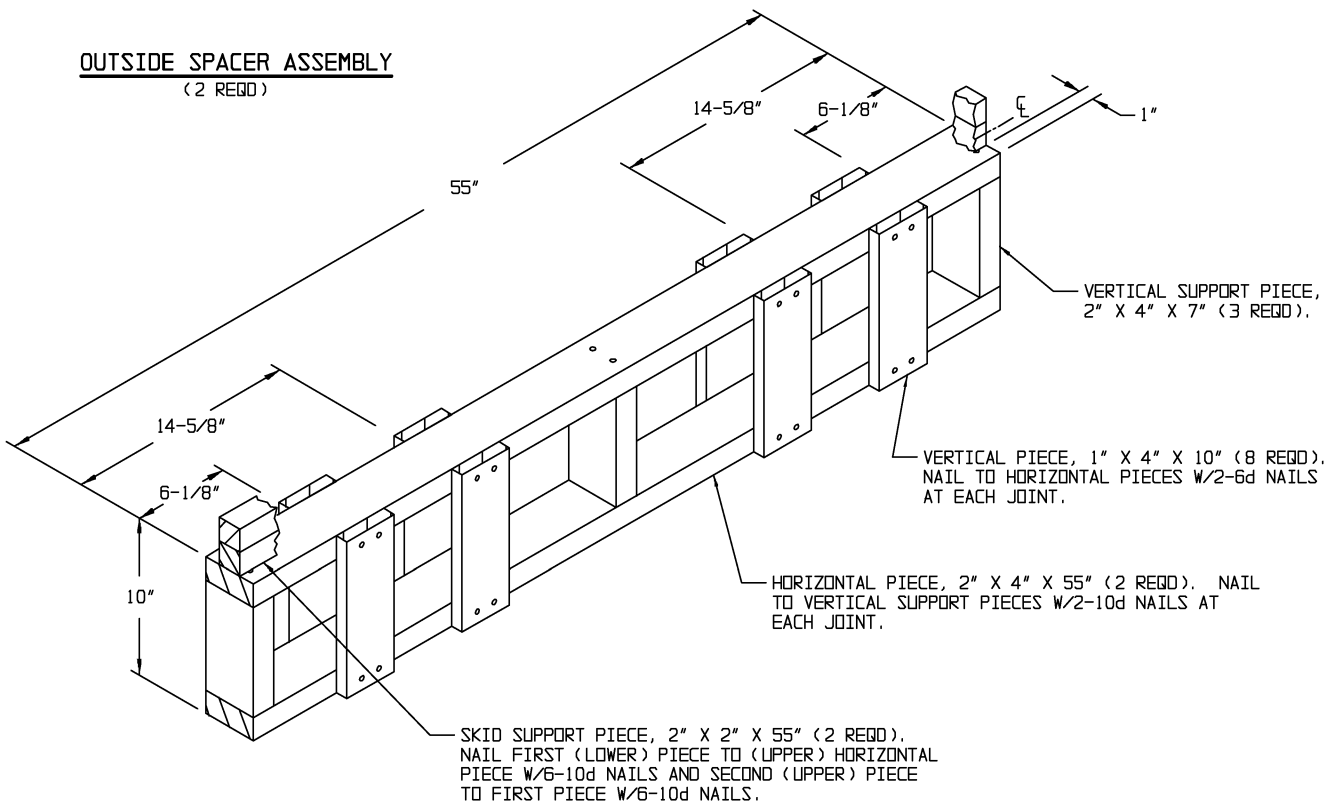
GENERAL NOTES

- A. THIS DOCUMENT HAS BEEN PREPARED AND ISSUED IN ACCORDANCE WITH AR 740-1 AND AUGMENTS TM 743-200-1 (CHAPTER 5) AND CONFORMS TO MIL-STD-1660.
- B. DIMENSIONS, CUBE AND WEIGHT OF A PALLET UNIT WILL VARY SLIGHTLY DEPENDING UPON THE ACTUAL DIMENSIONS OF THE BOXES AND THE WEIGHT OF THE SPECIFIC ITEM BEING UNITIZED.
- C. INSTALL THE HORIZONTAL STRAP TO BE LOCATED AS SHOWN. DO NOT COVER VENT OR HUMIDITY INDICATOR. THE HORIZONTAL STRAP MUST BE TENSIONED AND SEALED AFTER THE APPLICATION OF TIEDOWN STRAPS.
- D. INSTALL EACH TIEDOWN STRAP TO PASS UNDER THE DECK BOARDS OF THE PALLET AND TO BE LOCATED AS SHOWN. TIEDOWN STRAPS MUST BE TENSIONED AND SEALED PRIOR TO APPLICATION OF HORIZONTAL STRAP.
- E. THE FOLLOWING AMC DRAWINGS ARE APPLICABLE FOR UNLOADING AND STORAGE OF THE ITEMS COVERED BY THIS APPENDIX.

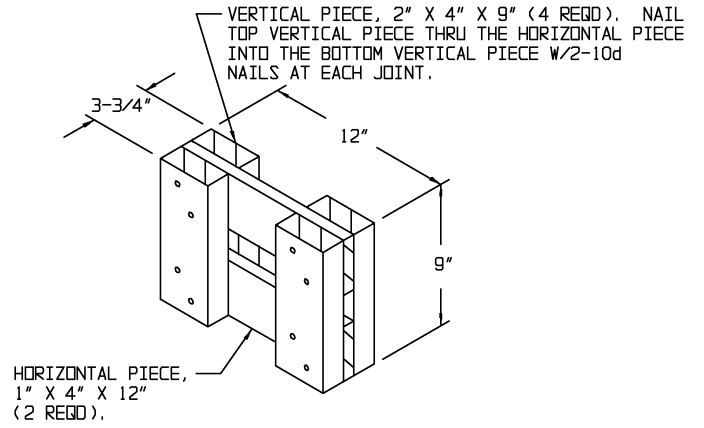
CARLOADING	----	19-48-4115-5PA1002
TRUCKLOADING	----	19-48-4117-11PA1003
STORAGE	----	19-48-4125-1-2-3-4-14-22PA1002
END OPENING ISO CONTAINER	----	19-48-4153-15PA1002
MILVAN	----	19-48-4166-15PA1003
SIDE OPENING ISO CONTAINER	----	19-48-4267-15PA1009
- F. IF ITEMS COVERED HEREIN ARE UNITIZED PRIOR TO ISSUANCE OF THIS APPENDIX, THE BOXES NEED NOT BE REUNITIZED SOLELY TO CONFORM TO THIS APPENDIX.
- G. WHEN APPLYING ANY STRAP, CARE MUST BE EXERCISED TO ASSURE THAT THE END OF THE STRAP ON THE UNDERSIDE OF THE JOINT EXTENDS AT LEAST 6" BEYOND THE SEAL. THIS EXTRA MINIMUM LENGTH OF STRAP IS REQUIRED TO PERMIT SUBSEQUENT TIGHTENING OF LOOSENED STRAPPING. RETENSIONING CAN BE ACCOMPLISHED WITHOUT REPLACING STRAPPING OR SPLICING STRAPPING THROUGH THE USE OF A FEEDWHEEL TENSIONING TOOL, MANUAL OR PNEUMATIC, AND THE APPLICATION OF ONE ADDITIONAL SEAL.
- H. ALL DUNNAGE SHALL BE PRESERVATIVE TREATED IN ACCORDANCE WITH THE PROCEDURES SPECIFIED IN MIL-B-2427 FOR CLEATED WOODEN BOXES. IF THE DUNNAGE CONSISTS OF MORE THAN ONE COMPONENT, IT MUST BE ASSEMBLED PRIOR TO TREATMENT. THE LETTERS PA DENOTING PG56 (COPPER-8-GLUCINDIOLATE), PB DENOTING M-GARD W550 (ZINC NAPHTHENATE EMULSIFIABLE) OR PC DENOTING M-GARD W510 OR CLNAPSOL 5 (COPPER NAPHTHENATE) MUST BE APPLIED TO THE WOOD DUNNAGE IN LETTERS AT LEAST ONE INCH HIGH.
- J. A PLUS OR MINUS 1/4" IS ALLOWED ON OVERALL DIMENSIONS OF ANY DUNNAGE ASSEMBLY. HOWEVER, SIMILAR PIECES IN AN ASSEMBLY MUST BE WITHIN 1/8" OF THE SAME DIRECTION.
- K. IN ORDER TO OBTAIN COMPACT (SOUND) UNITS, ALL STRAPS SHALL BE LOCATED IN PROPER ALIGNMENT AND TENSIONED UNTIL THEY CUT INTO THE EDGE OF THE PALLET DECK. AFTER TENSIONING, ALL STRAPS WILL BE SECURED USING ONE SEAL AND TWO PAIR OF NOTCHES.
- L. DIMENSIONAL LUMBER SPECIFIED THROUGHOUT THIS PROCEDURAL DRAWING IS OF NOMINAL SIZE UNLESS OTHERWISE SPECIFIED. FOR EXAMPLE, 1" X 4" MATERIAL IS ACTUALLY 3/4" THICK BY 3-1/2" WIDE AND 2" X 4" MATERIAL IS ACTUALLY 1-1/2" THICK BY 3-1/2" WIDE.
- M. FOR DETAILS OF THE METAL SHIPPING AND STORAGE CONTAINER SEE DRAWING 9342676.
- N. THE METAL SHIPPING AND STORAGE CONTAINERS MUST BE POSITIONED WITH THE HUMIDITY INDICATOR FACING OUTWARDS.



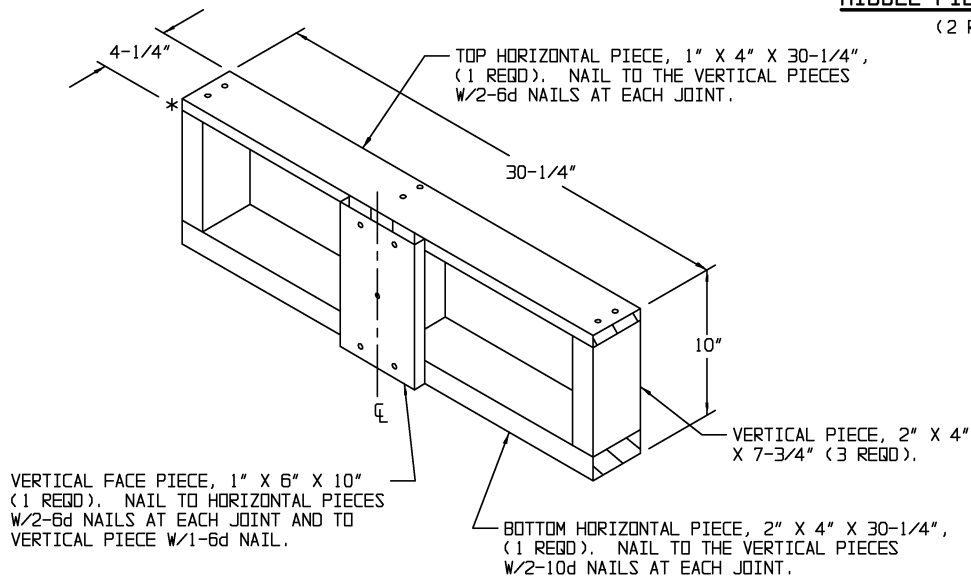
OUTSIDE SPACER ASSEMBLY
(2 REQD)



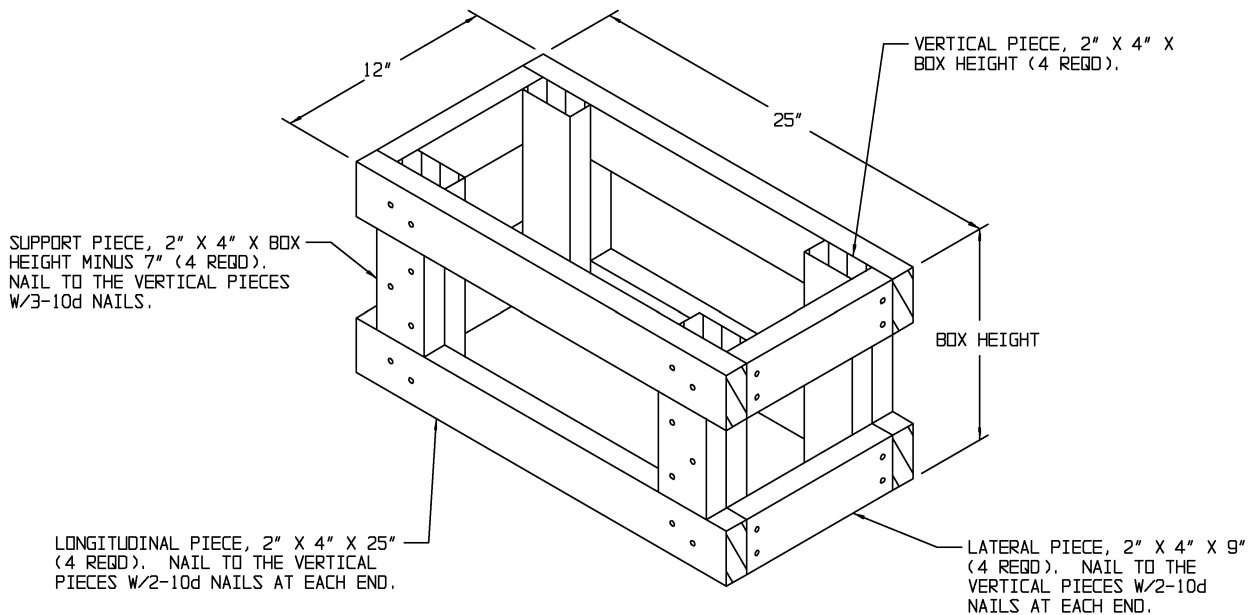
MIDDLE SPACER ASSEMBLY
(1 REQD)



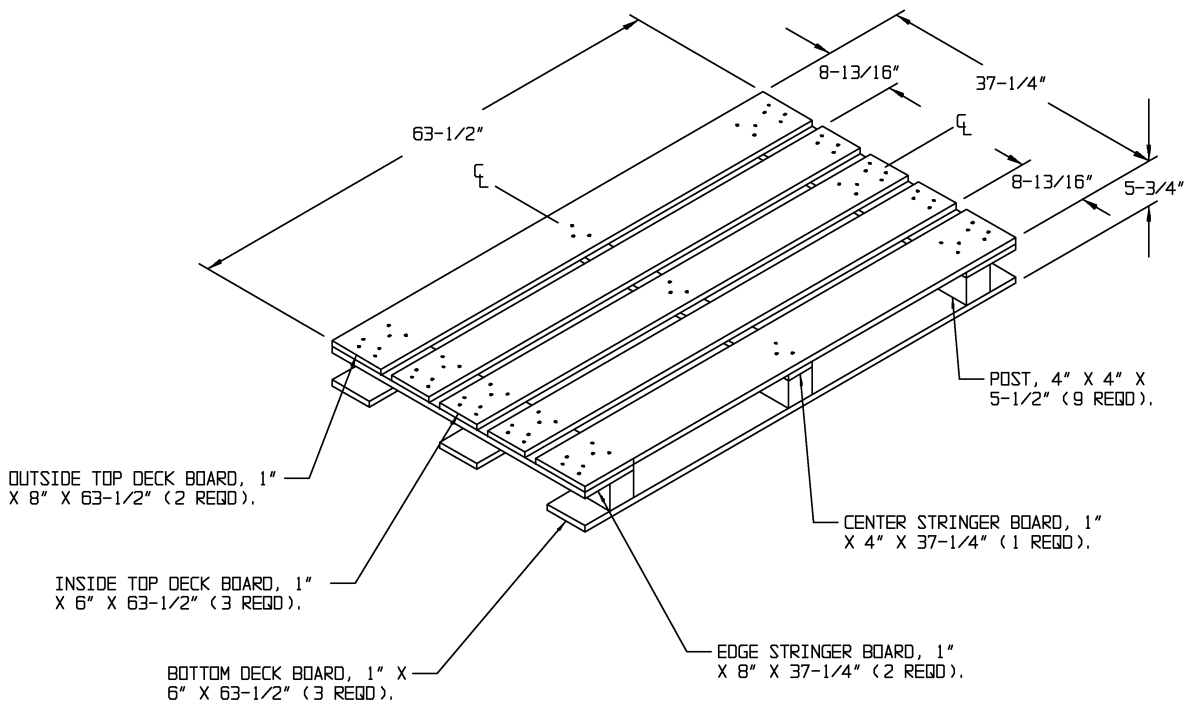
MIDDLE FILLER ASSEMBLY
(2 REQD)



END SPACER ASSEMBLY
(2 REQD)



FILLER ASSEMBLY



SPECIAL NOTES:

1. MODIFIED STYLE 1A MIL-P-15011 PALLET.
2. MATERIAL: WOOD, ASTM-D6199, GROUP III OR IV. ASTM-F1667, TYPE 1, STYLE 18, PALLET NAILS. EXCEPT THAT THE NAIL POINT MAY BE DIAMOND (NOT LONGER THAN 5/32 INCH), OR CHISEL PROVIDED THE WIDTH DOES NOT EXCEED THE WIRE DIAMETER.
3. NAIL OUTSIDE TOP DECK BOARDS TO STRINGER BOARDS WITH FOUR 1-5/8 INCH 11 GAGE DRIVE-SCREW NAILS AT EACH JOINT. NAIL INSIDE TOP DECK BOARDS TO STRINGER BOARDS WITH THREE 1-5/8 INCH 11 GAGE DRIVE-SCREW NAILS AT EACH JOINT. NAIL THRU TOP DECK BOARD AND STRINGER BOARD INTO POSTS WITH THREE 3-1/4 INCH 10 GAGE DRIVE-SCREW NAILS. NAIL EACH BOTTOM DECK BOARD TO POST WITH THREE 2-1/4 INCH 11 GAGE DRIVE-SCREW NAILS.

BILL OF MATERIAL FOR PALLET

LUMBER	LINEAR FEET	BOARD FEET
1" X 4"	2.98	0.99
1" X 6"	31.75	15.88
1" X 8"	16.79	11.19
4" X 4"	4.13	5.51
NAILS	NO. REQD	POUNDS
1-5/8"	34	.21
2-1/4"	27	.27
3-1/4"	27	.47