

UNITIZATION PROCEDURES FOR ARMOR TILE, REPAIR KIT, XMI AND XM2, PACKED 1 PER WOODEN BOX, UNITIZED 18 BOXES PER 40" X 48" PALLET; APPROX BOX SIZE 45-1/4" L X 16-1/8" W X 5-5/8" H

PALLET UNIT DATA						
ITEMS INCLUDED		HAZARD CLASSIFICATION ^①				WEIGHT (LBS)
NSN	DODIC	DOT CLASS	CG CLASS	QD CLASS	COMP GROUP	
1375- 01-227-7819 01-227-7818	M L97 ML96	A A	IV IV	(04) 1, 2 (04) 1, 2	D D	2,102 2,156

① HAZARD CLASSIFICATION DATA CONTAINED IN THE CHART TO THE LEFT IS FOR GUIDANCE AND INFORMATIONAL PURPOSES ONLY. VERIFICATION OF THE SPECIFIED DATA SHOULD BE MADE BY CONSULTING THE MOST RECENT JOINT HAZARD CLASSIFICATION SYSTEM LISTING OR OTHER APPROVED LISTING (S).

REVISION

REVISION NO. 1, DATED NOVEMBER 1987, CONSISTS OF:

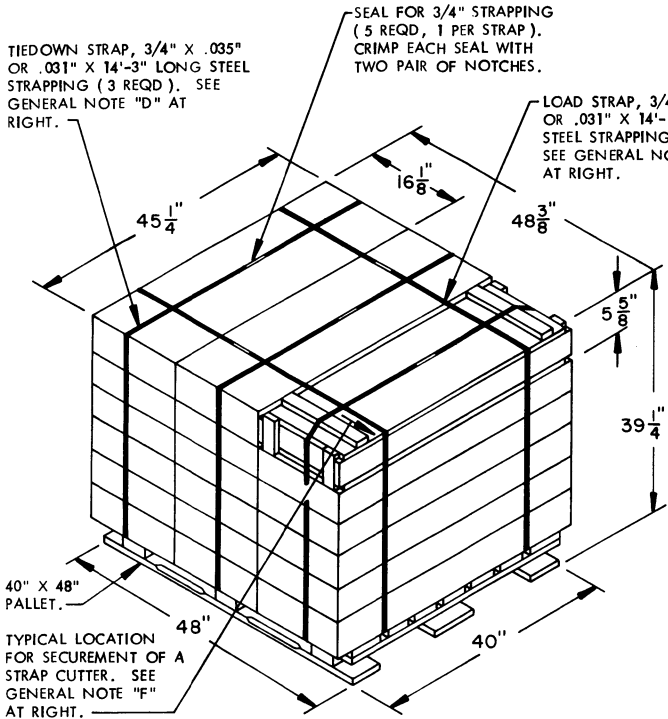
1. ADDING DODIC'S TO "PALLET UNIT DATA" CHART.
2. ADDING GENERAL NOTE "N".

REVISIONS				DRAFTSMAN dh	PROJ ENG WRF	NLH (CR)
1	NOV 87	WRF WSE	W. Martin W. Ernest	GNG	LOG ENGRG OFFICE W. Ernest	
				APPROVED, U.S. ARMY ARMAMENT, MUNITIONS AND CHEMICAL COMMAND		
				<small>SMCAR-ESK</small> <small>AMSNC-TMD</small> APPROVED BY ORDER OF COMMANDING GENERAL, U.S. ARMY MATERIAL COMMAND (AMC)		
				 U.S. ARMY DEFENSE AMMUNITION CENTER AND SCHOOL		
				U.S. ARMY AMC DRAWING		
				JULY 1986		
		CLASS	DIVISION	DRAWING	FILE	
		19	48	4221/1	20PA 1009	

DO NOT SCALE

GENERAL NOTES

- A. THIS DOCUMENT HAS BEEN PREPARED AND ISSUED IN ACCORDANCE WITH AR 740-1 AND AUGMENTS TM 743-200-1 (CHAPTER 5) AND CONFORMS TO MIL-STD-1660.
- B. DIMENSIONS, CUBE AND WEIGHT OF A PALLET UNIT WILL VARY SLIGHTLY DEPENDING UPON THE ACTUAL DIMENSIONS OF THE BOXES AND THE WEIGHT OF THE SPECIFIC ITEM BEING UNITIZED.
- C. THE LOAD STRAPS MAY BE THREADED THROUGH THE STRAP SLOTS OF A PALLET OR PRE-POSITIONED ON THE PALLET DECK PRIOR TO PLACING BOXES ON THE PALLET. LOAD STRAPS MUST BE TENSIONED AND SEALED PRIOR TO APPLICATION OF TIEDOWN STRAPS.
- D. INSTALL EACH TIEDOWN STRAP TO PASS UNDER THE TOP DECK BOARDS OF THE PALLET AND TO BE LOCATED AS SHOWN. TIEDOWN STRAPS WILL NOT BE APPLIED UNTIL THE LOAD STRAPS HAVE BEEN TENSIONED AND SEALED.
- E. THE FOLLOWING AMC (DARCOM) DRAWINGS ARE APPLICABLE FOR OUTLOADING AND STORAGE OF THE ITEMS COVERED BY THIS APPENDIX.
 MILVAN ----- DRAWING 19-48-4166-15PA1003
 CARLOADING ---- DRAWING 19-48-4115-5PA1002
 TRUCKLOADING - DRAWING 19-48-4117-11PA1003
 STORAGE ----- DRAWING 19-48-4118-1-2-3-4-14-22PA1002
- F. FOR METHOD OF SECURING A STRAP CUTTER TO THE PALLET UNIT, SEE DARCOM DRAWING 19-48-4127-20P1000.
- G. IF ITEMS COVERED HEREIN ARE UNITIZED PRIOR TO ISSUANCE OF THIS DRAWING, THE BOXES NEED NOT BE REUNITIZED SOLELY TO CONFORM TO THIS APPENDIX.
- H. WHEN APPLYING ANY STRAP, CARE MUST BE EXERCISED TO ASSURE THAT THE END OF THE STRAP ON THE UNDERSIDE OF THE JOINT EXTENDS AT LEAST 6" BEYOND THE SEAL. THIS EXTRA MINIMUM LENGTH OF STRAP IS REQUIRED TO PERMIT SUBSEQUENT TIGHTENING OF LOOSENED STRAPPING. RETENSIONING CAN BE ACCOMPLISHED WITHOUT REPLACING STRAPPING OR SPLICING STRAPPING THROUGH THE USE OF A FEEDWHEEL TENSIONING TOOL, MANUAL OR PNEUMATIC, AND THE APPLICATION OF ONE ADDITIONAL SEAL.
- J. ALL WOODEN DUNNAGE AND PALLETS MUST BE PRESERVATIVE TREATED WITH EITHER COPPER-8-QUINOLINOLATE OR ZINC NAPHTHENATE EMULSIFIABLE. PALLETS AND DUNNAGE ASSEMBLIES MUST BE ASSEMBLED PRIOR TO TREATMENT. THE LETTERS "PA" DENOTING PQ56 (COPPER-8-QUINOLINOLATE) OR "PB" DENOTING M-GARD W550 (ZINC NAPHTHENATE EMULSIFIABLE) MUST BE APPLIED TO THE OUTER FACE OF THE CENTER POST ON THE 48" SIDES OF THE PALLET IN LETTERS AT LEAST ONE-INCH HIGH.
- K. A PLUS OR MINUS 1/4" IS ALLOWED ON OVERALL DIMENSIONS OF ANY DUNNAGE ASSEMBLY. HOWEVER, SIMILAR PIECES IN AN ASSEMBLY MUST BE WITHIN 1/8" OF THE SAME DIMENSION.
- L. IN ORDER TO OBTAIN COMPACT (SOUND) UNITS, ALL STRAPS SHALL BE LOCATED IN PROPER ALIGNMENT AND TENSIONED UNTIL THEY CUT INTO THE EDGE OF THE PALLET DECK. AFTER TENSIONING, ALL STRAPS WILL BE SECURED USING ONE SEAL AND TWO PAIR OF NOTCHES.
- M. DIMENSIONAL LUMBER SPECIFIED THROUGHOUT THIS PROCEDURAL DRAWING IS OF NOMINAL SIZE UNLESS OTHERWISE SPECIFIED. FOR EXAMPLE, 1" X 4" MATERIAL IS ACTUALLY 3/4" THICK BY 3-1/2" WIDE AND 2" X 4" MATERIAL IS ACTUALLY 1-1/2" THICK BY 3-1/2" WIDE.
- N. THE STYLE 1 PALLET DELINEATED IN THE DETAIL AT LEFT NEED NOT HAVE CHAMFERS OR STRAP SLOTS AS SPECIFIED WITHIN MILITARY SPECIFICATION MIL-P-15011 WHEN USED FOR THE UNITIZATION OF THE ITEMS COVERED BY THIS APPENDIX.



PALLET UNIT

SEE GENERAL NOTE "B" AT RIGHT.

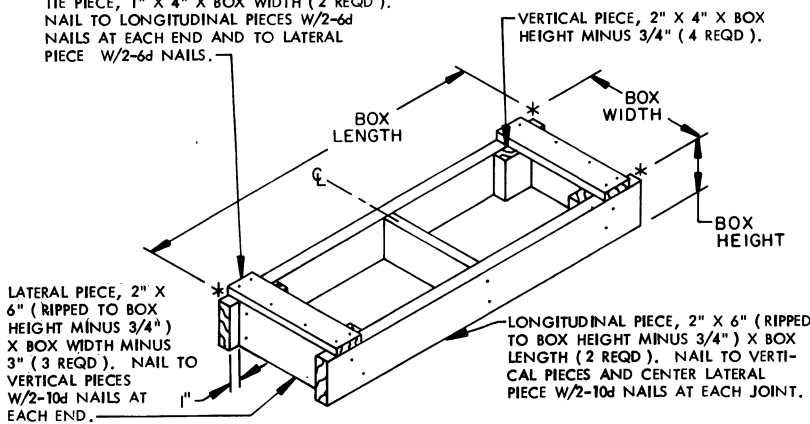
18 BOXES OF REPAIR KITS (1 PER BOX) @ 115 LBS ----- 2,070 LBS (APPROX)
 DUNNAGE ----- 6 LBS
 PALLET ----- 80 LBS

TOTAL WEIGHT ----- 2,156 LBS (APPROX)
 CUBE ----- 49.7 CU FT (APPROX)

BILL OF MATERIAL

PALLET, 40" X 48" -----	1 REQD -----	80 LBS
STEEL STRAPPING, 3/4" ---	72.42' REQD -----	5.17 LBS
SEAL FOR 3/4" STRAPPING ---	5 REQD -----	NIL

TIE PIECE, 1" X 4" X BOX WIDTH (2 REQD).
 NAIL TO LONGITUDINAL PIECES W/2-6d
 NAILS AT EACH END AND TO LATERAL
 PIECE W/2-6d NAILS.



FILLER ASSEMBLY
 (FOR MINUS ONE BOX)

MATERIAL SPECIFICATIONS

- PALLET** -----: MIL SPEC MIL-P-15011; 4-WAY ENTRY, STYLE I, TYPE I, CLASS I, PRESERVATIVE TREATED. SEE GENERAL NOTE "J".
- LUMBER** -----: SEE TM 743-200-1 (DUNNAGE LUMBER) AND FED SPEC MM-L-751.
- NAILS** -----: FED SPEC FF-N-105; COMMON. ALT: ANNULAR-RING TYPE NAIL OR PALLET TYPE (MECHANICALLY DEFORMED) NAIL OF SAME SIZE.
- STRAPPING, STEEL**---: FED SPEC QQ-S-781; CLASS I, TYPE I OR IV, HEAVY DUTY, FINISH B (GRADE 2), SIZE 3/4" X .035" OR .031".
- SEAL, STRAP**-----: FED SPEC QQ-S-781; TYPE D, STYLE I, II, OR IV, CLASS H, FINISH B (GRADE 2).