

D L Cook

DATE 11/8/96

LOADING AND BRACING IN END OPENING ISO CONTAINERS OF COMPLETE ROUNDS PACKED IN CYLINDRICAL METAL CONTAINERS

T53 SERIES CONTAINERS

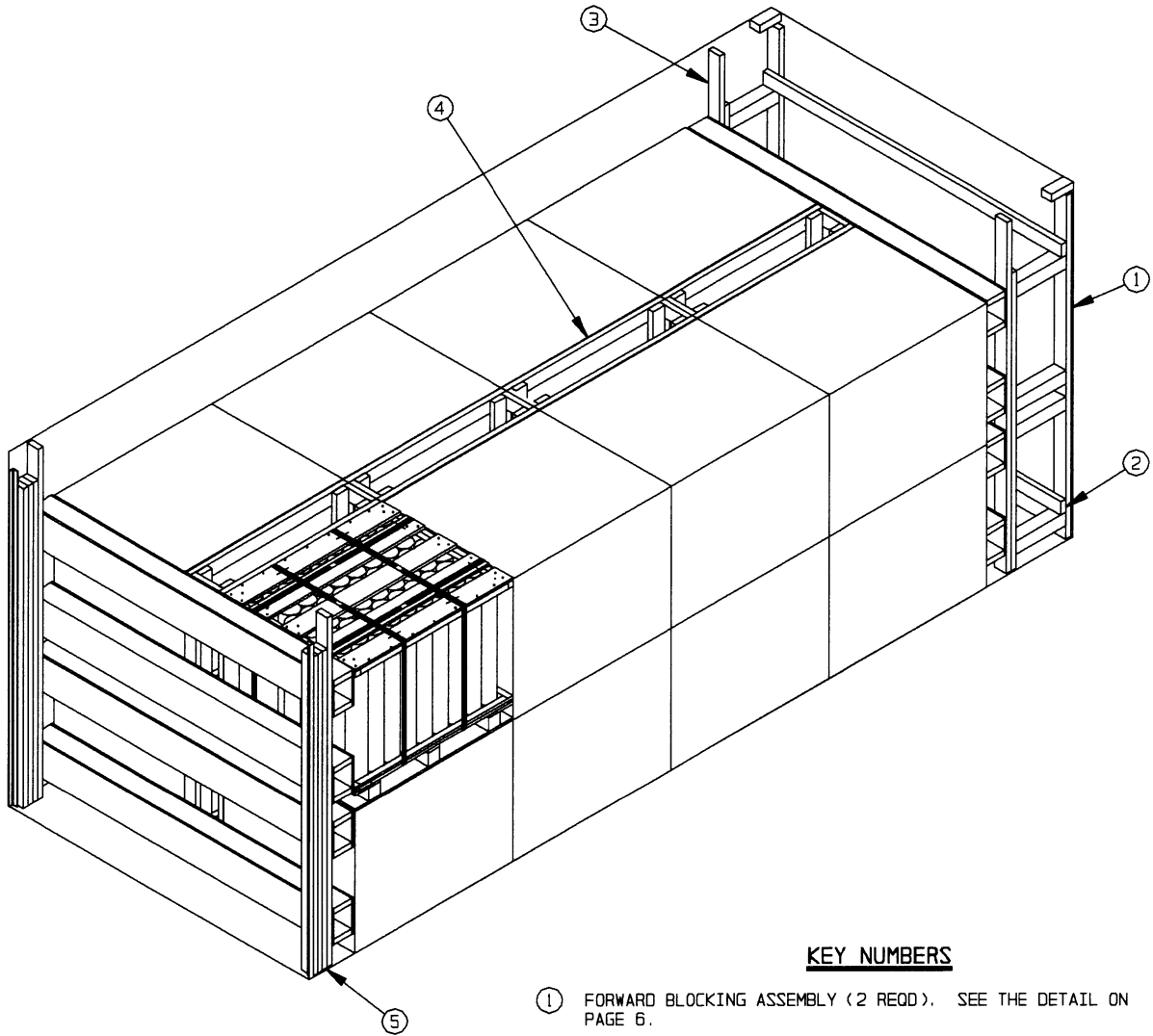
INDEX

<u>ITEM</u>	<u>PAGE(S)</u>
TYPICAL LOADING PROCEDURES - - - - -	2
GENERAL NOTES AND MATERIAL SPECIFICATIONS - - - - -	3
DETAILS - - - - -	4-8
PALLET UNIT DETAIL - - - - -	5

- LOADING AND BRACING SPECIFICATIONS SET FORTH WITHIN THIS DRAWING ARE APPLICABLE TO LOADS THAT ARE TO BE SHIPPED BY TRAILER/CONTAINER-ON-FLATCAR (T/COFC) RAIL CARRIER SERVICE. THESE SPECIFICATIONS MAY ALSO BE USED FOR LOADS THAT ARE TO BE MOVED BY MOTOR OR WATER CARRIERS.

U.S. ARMY MATERIEL COMMAND DRAWING			
APPROVED, U.S. ARMY INDUSTRIAL OPERATIONS COMMAND <i>David E. Ditchwick</i>	DRAFTSMAN	TECHNICIAN	ENGINEER L. FIEFFER M. SARDONE
	VALIDATION ENGINEERING DIVISION	TRANSPORTATION ENGINEERING DIVISION	LOGISTICS ENGINEERING OFFICE
APPROVED BY ORDER OF COMMANDING GENERAL, U.S. ARMY MATERIEL COMMAND <i>William F. Ernst</i>	<i>JAN W. Smith W F Ernst</i>		
U.S. ARMY DEFENSE AMMUNITION CENTER AND SCHOOL	JUNE 1986		
REVISION NO. 1	SEPTEMBER 1996	CLASS	DIVISION
SEE THE REVISION LISTING ON PAGE 3		DRAWING	FILE
		19	48
		4215/2	15PM1013

DO NOT SCALE



ISOMETRIC VIEW

KEY NUMBERS

- ① FORWARD BLOCKING ASSEMBLY (2 REOD). SEE THE DETAIL ON PAGE 6.
- ② SPREADER PIECE, 2" X 4" BY INSIDE CONTAINER WIDTH MINUS 1" (REF: 7'-7") (2 REOD). NAIL TO THE VERTICAL PIECES OF PIECE MARKED ① W/2-10d NAILS AT EACH END.
- ③ FORWARD/REAR BLOCKING ASSEMBLY (2 REOD). SEE THE DETAIL ON PAGE 4. NAIL THROUGH THE BUFFER PIECES INTO THE VERTICAL PIECES OF PIECE MARKED ① W/5-10d NAILS.
- ④ CENTER FILL ASSEMBLY (4 REOD). SEE THE DETAIL ON PAGE 4.
- ⑤ FILL MATERIAL, 4" WIDE BY 7'-0" LONG MATERIAL (AS REOD). NAIL THE FIRST PIECE TO THE REAR BLOCKING ASSEMBLY W/6 NAILS OF A SUITABLE SIZE (10d NAILS FOR 2" THICK MATERIAL). NAIL EACH ADDITIONAL PIECE TO THE PREVIOUS PIECE IN A SIMILAR MANNER. NOTE: MULTIPLE PIECES MAY BE LAMINATED TOGETHER FIRST AND THEN TOENAILED TO THE REAR BLOCKING ASSEMBLY.

BILL OF MATERIAL

LUMBER	LINEAR FEET	BOARD FEET
2" X 4"	368	246
2" X 6"	122	122
4" X 4"	10	14
NAILS	NO. REOD	POUNDS
6d (2")	352	5-1/2
10d (3")	466	7-1/4
PLYWOOD, 1/2"	96 SQ FT REOD	132-1/4 LBS

LOAD AS SHOWN

ITEM	QUANTITY	WEIGHT (APPROX)
PALLET UNIT	16	33,600 LBS
DUNNAGE		909 LBS
CONTAINER		4,700 LBS
TOTAL WEIGHT		39,209 LBS (APPROX)

(GENERAL NOTES CONTINUED)

- M. REQUIREMENTS CITED WITHIN THE BUREAU OF EXPLOSIVES PAMPHLET 6C APPLY WHEN THE SHIPMENT MOVES BY TRAILER/CONTAINER-ON-FLATCAR (T/COFC). SPECIAL T/COFC NOTES FOLLOW:
 - 1. A LOADED CONTAINER MUST BE ON A CHASSIS EQUIPPED WITH TWO BOGIE ASSEMBLIES WHEN BEING MOVED IN TOFC SERVICE.
 - 2. THE LOAD LIMIT OF A T/COFC RAILCAR MUST NOT BE EXCEEDED, NOR WILL A CAR BE LOADED SO THAT THE TRUCK UNDER ONE END OF THE CAR CARRIES MORE THAN ONE-HALF OF THE LOAD LIMIT FOR THAT CAR.
- N. DURING INTRASTATE AND/OR INTERSTATE MOVES BY MOTOR CARRIER, A PROPER CHASSIS OR MODIFIED FLATBED TRAILER MUST BE USED TO PRECLUDE VIOLATION OF ONE OR MORE "WEIGHT LAWS" APPLICABLE TO THE STATE OR STATES INVOLVED.
- O. CONVERSION TO METRIC EQUIVALENTS: DIMENSIONS WITHIN THIS DOCUMENT ARE EXPRESSED IN INCHES AND WEIGHTS ARE EXPRESSED IN POUNDS. WHEN NECESSARY, THE METRIC EQUIVALENTS MAY BE COMPUTED ON THE BASIS OF ONE INCH EQUALS 25.4 MM AND ONE POUND EQUALS 0.454 KG.
- P. THE QUANTITY OF PALLET UNITS SHOWN IN THE LOAD ON PAGE 2 MAY BE REDUCED FOR SHIPMENT, IF DESIRED. SEE THE FILLER ASSEMBLY ON PAGE 6.
 - 1. IF A LOAD IS REDUCED BY ONLY A SMALL AMOUNT (ONE OR TWO LADING UNITS), LADING UNITS NORMALLY MAY BE ELIMINATED FROM THE CENTER OF THE LOAD.
 - 2. IF A LOAD IS REDUCED BY A LARGE AMOUNT (MORE THAN TWO LADING UNITS), LADING UNITS SHOULD BE ELIMINATED AS REQUIRED AND THE TOTAL LOAD SHIFTED FORE OR AFT, AS NECESSARY, TO ACHIEVE A SYMMETRICAL WEIGHT DISTRIBUTION. THE DEPICTED PROCEDURES WILL BE FOLLOWED AS CLOSELY AS POSSIBLE, MAKING ONLY THOSE ADJUSTMENTS TO THE DUNNAGE WHICH ARE REQUIRED TO ACCOMMODATE THE NUMBER OF UNITS TO BE SHIPPED.
- Q. RECOMMENDED SEQUENTIAL LOADING PROCEDURES:
 - 1. PREFABRICATE TWO FORWARD STRUT ASSEMBLIES, TWO FORWARD/REAR BLOCKING ASSEMBLIES, AND FOUR CENTER FILL ASSEMBLIES.
 - 2. INSTALL THE TWO FORWARD STRUT ASSEMBLIES.
 - 3. INSTALL THE SPREADER PIECES.
 - 4. INSTALL THE FORWARD BLOCKING ASSEMBLY.
 - 5. LOAD FOUR PALLET UNITS AND INSTALL ONE CENTER FILL ASSEMBLY.
 - 6. REPEAT STEP 5 THREE TIMES.
 - 7. INSTALL THE REAR BLOCKING ASSEMBLY.
 - 8. INSTALL THE SOLID FILL MATERIAL.

REVISION

REVISION NO. 1, DATED SEPTEMBER 1996, CONSISTS OF STREAMLINING DUNNAGING METHODS.

MATERIAL SPECIFICATIONS

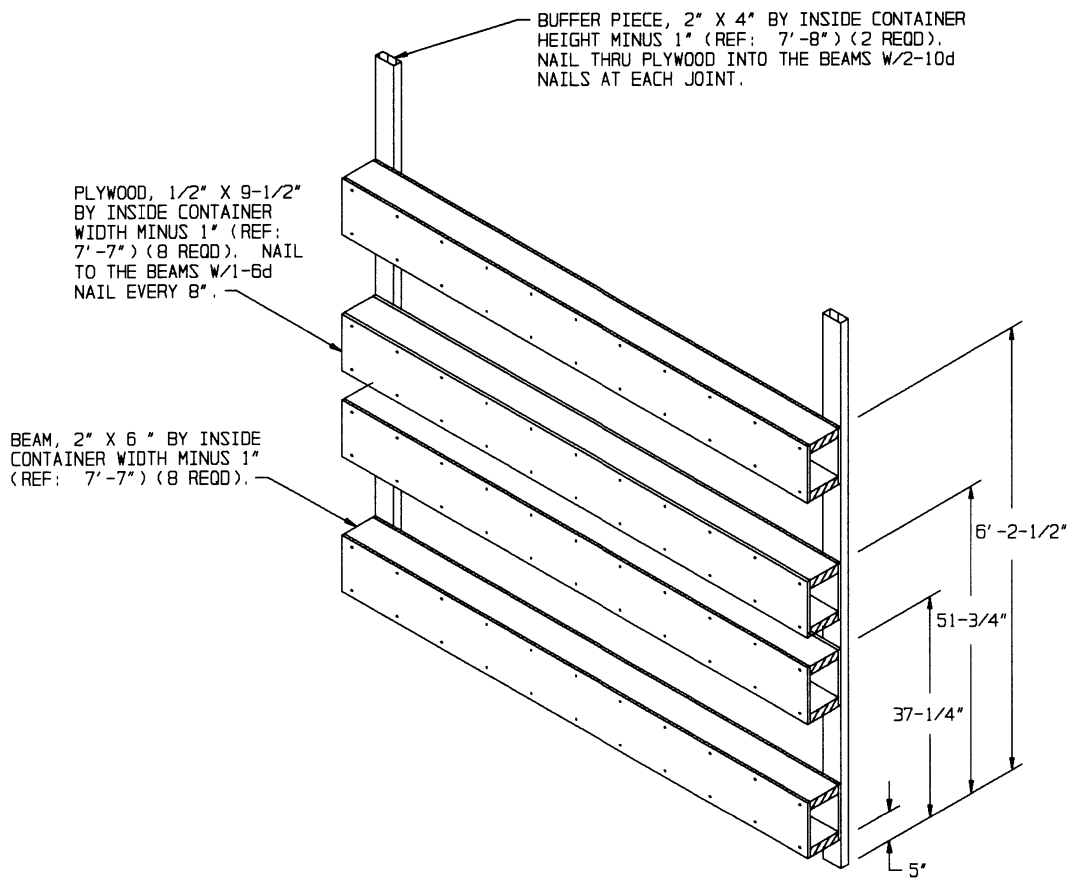
- LUMBER - - - - - : SEE TM 743-200-1 (DUNNAGE LUMBER) AND FED SPEC MM-L-751.
- NAILS - - - - - : FED SPEC FF-N-105; COMMON.
- PLYWOOD - - - - - : COMMERCIAL ITEM DESCRIPTION A-A-55057, TYPE A, CONSTRUCTION AND INDUSTRIAL PLYWOOD, INTERIOR WITH EXTERIOR GLUE, GRADE C-D. IF SPECIFIED GRADE IS NOT AVAILABLE, A BETTER INTERIOR OR AN EXTERIOR GRADE MAY BE SUBSTITUTED.

GENERAL NOTES

- A. THIS DOCUMENT HAS BEEN PREPARED AND ISSUED IN ACCORDANCE WITH AR 740-1 AND AUGMENTS TM 743-200-1 (CHAPTER 5).
- B. THE SPECIFIED OUTLOADING PROCEDURES ARE APPLICABLE TO LOADS OF COMPLETE ROUNDS PACKED IN T53 SERIES METAL CONTAINERS. SUBSEQUENT REFERENCE TO PALLET UNIT HEREIN MEANS THE PALLET UNIT WITH AMMUNITION ITEMS. SEE PAGE 5 AND AMC DRAWING 19-48-4079/2-20PM1002 FOR DETAILS OF THE PALLET UNIT. CAUTION: REGARDLESS OF THE QUANTITY OF CONTAINERS TO BE SHIPPED, THE "MAXIMUM GROSS WEIGHT" OF THE END OPENING ISO CONTAINER MUST NOT BE EXCEEDED.
- C. THE LOAD AS SHOWN IS BASED ON A 4,700 POUND 20' LONG BY 8' WIDE BY 8'-6" HIGH END OPENING ISO CONTAINER WITH INSIDE DIMENSIONS OF 19'-4" LONG BY 92" WIDE BY 93" HIGH, WITH A MAXIMUM GROSS WEIGHT OF 52,910 POUNDS. OLDER/OTHER CONTAINERS MAY HAVE A TOTAL INSIDE HEIGHT OF 95", BUT A CLEAR HEIGHT UNDER THE ROOF BOWS OF 93". VERIFY INSIDE CONTAINER HEIGHT PRIOR TO FABRICATING DUNNAGE. THE LOAD IS DESIGNED FOR TRAILER/CONTAINER-ON-FLATCAR (T/COFC) SHIPMENT, HOWEVER, THE LOAD AS DESIGNED CAN ALSO BE MOVED BY OTHER SURFACE MODES OF TRANSPORT. NOTICE: OTHER CONTAINERS OF THE SAME DESIGN CONFIGURATION CAN BE USED.
- D. WHEN LOADING PALLET UNITS, THEY ARE TO BE POSITIONED SO AS TO ACHIEVE A TIGHT LOAD (TIGHT AGAINST THE DUNNAGE ASSEMBLIES). THE UNBLOCKED SPACE ACROSS THE WIDTH OF A LOAD BAY IS NOT TO EXCEED 1-1/2". EXCESSIVE SLACK CAN BE ELIMINATED FROM A LOAD BY LAMINATING ADDITIONAL PIECES OF APPROPRIATE THICKNESS TO THE HORIZONTAL PIECES ON THE CENTER FILL ASSEMBLIES. NAIL EACH ADDITIONAL PIECE W/1 APPROPRIATELY SIZED NAIL EVERY 12". ADDITIONALLY, THE LENGTH OF THE LATERAL PIECES IN THE CENTER FILL ASSEMBLIES MAY BE ADJUSTED AS REQUIRED TO FACILITATE VARIANCE IN THE SIZE OF THE PALLET UNIT.
- E. DUNNAGE LUMBER SPECIFIED IS OF NOMINAL SIZE. FOR EXAMPLE, 1" X 4" MATERIAL IS ACTUALLY 3/4" THICK BY 3-1/2" WIDE AND 2" X 6" MATERIAL IS ACTUALLY 1-1/2" THICK BY 5-1/2" WIDE.
- F. A STAGGERED NAILING PATTERN WILL BE USED WHENEVER POSSIBLE WHEN NAILS ARE DRIVEN INTO JOINTS OF DUNNAGE ASSEMBLIES OR WHEN LAMINATING DUNNAGE. ADDITIONALLY, THE NAILING PATTERN FOR AN UPPER PIECE OF LAMINATED DUNNAGE WILL BE ADJUSTED AS REQUIRED SO THAT A NAIL FOR THAT PIECE WILL NOT BE DRIVEN THROUGH ONTO OR RIGHT BESIDE A NAIL IN A LOWER PIECE.
- G. IN SOME CONTAINERS THERE IS A SLOT AT THE CORNERS OF THE FORWARD WALL. PIECES OF DUNNAGE MATERIAL MUST BE LAMINATED TO THE FORWARD BUFFER PIECES ON THE FORWARD STRUT ASSEMBLIES TO PROVIDE A FLAT SURFACE FOR THE 2" X 4" BUFFER PIECES. A PIECE OF 2" X 4", 2" X 3" OR A SPECIAL WIDTH PIECE CUT-TO-FIT CAN BE USED. THIS FILL PIECE WILL BE NAILED WITH ONE APPROPRIATELY SIZED NAIL EVERY 12". NOTE THAT SOME CONTAINERS ARE EQUIPPED WITH "TIE-BARS" IN THE CORNER SLOT, WHICH PRECLUDE THE USE OF A FULL HEIGHT FILL PIECE. WHEN "TIE-BARS" ARE PRESENT, THE FILL PIECE MUST BE INSTALLED IN SEGMENTS DESIGNED TO FIT BETWEEN THE "TIE-BARS" VERTICALLY. THE FILL PIECE(S) IS NOT REQUIRED WHEN THE CORNER PORTIONS OF THE CONTAINER FORWARD WALL ARE SMOOTH AND FLAT. DO NOT ALLOW ANY DUNNAGE ASSEMBLY TO CONTACT THE CONTAINER FORWARD WALL, ONLY THE CORNER POSTS OF THE CONTAINER SHOULD BE USED FOR FORWARD LONGITUDINAL BLOCKING.
- H. WHETHER A CONTAINER IS FULL OR IS LOADED WITH A REDUCED QUANTITY OF LADING UNITS, THE LENGTHWISE CENTER OF GRAVITY OF THE LOAD MUST BE WITHIN 12", IN EITHER DIRECTION, OF THE MID-POINT OF THE CONTAINER.
- J. CAUTION: DO NOT NAIL DUNNAGE MATERIAL TO THE CONTAINER WALLS OR FLOOR. ALL NAILING WILL BE WITHIN THE DUNNAGE.
- K. PORTIONS OF THE CONTAINER DEPICTED WITHIN THIS DRAWING, SUCH AS THE SIDEWALL, HAVE NOT BEEN SHOWN IN THE LOAD VIEWS FOR CLARITY PURPOSES.
- L. MAXIMUM LOAD WEIGHT CRITERIA:

THE MAXIMUM LOAD WEIGHTS ARE CONTROLLED BY EQUIPMENT CAPABILITY FACTORS. ALTHOUGH THE HEAVIEST MAXIMUM LOADS ARE DELINEATED IN THE LOAD VIEWS, PROVISIONS ARE INCLUDED WITHIN THIS DRAWING SO THAT THE BASIC LOADS CAN BE ADJUSTED TO SATISFY A LESSER QUANTITY OF LADING UNITS. DEPENDING ON TRANSPORTATION ROUTING, IT MAY BE NECESSARY TO REDUCE THE LOAD WEIGHT TO SATISFY "WEIGHT LAWS" OF CERTAIN STATES. ALSO, IT MAY BE NECESSARY TO REDUCE THE LOAD WEIGHT TO SATISFY OTHER WEIGHT RESTRICTIONS IMPOSED ON THE INTERMODAL CONTAINER SYSTEM.

(CONTINUED AT LEFT)



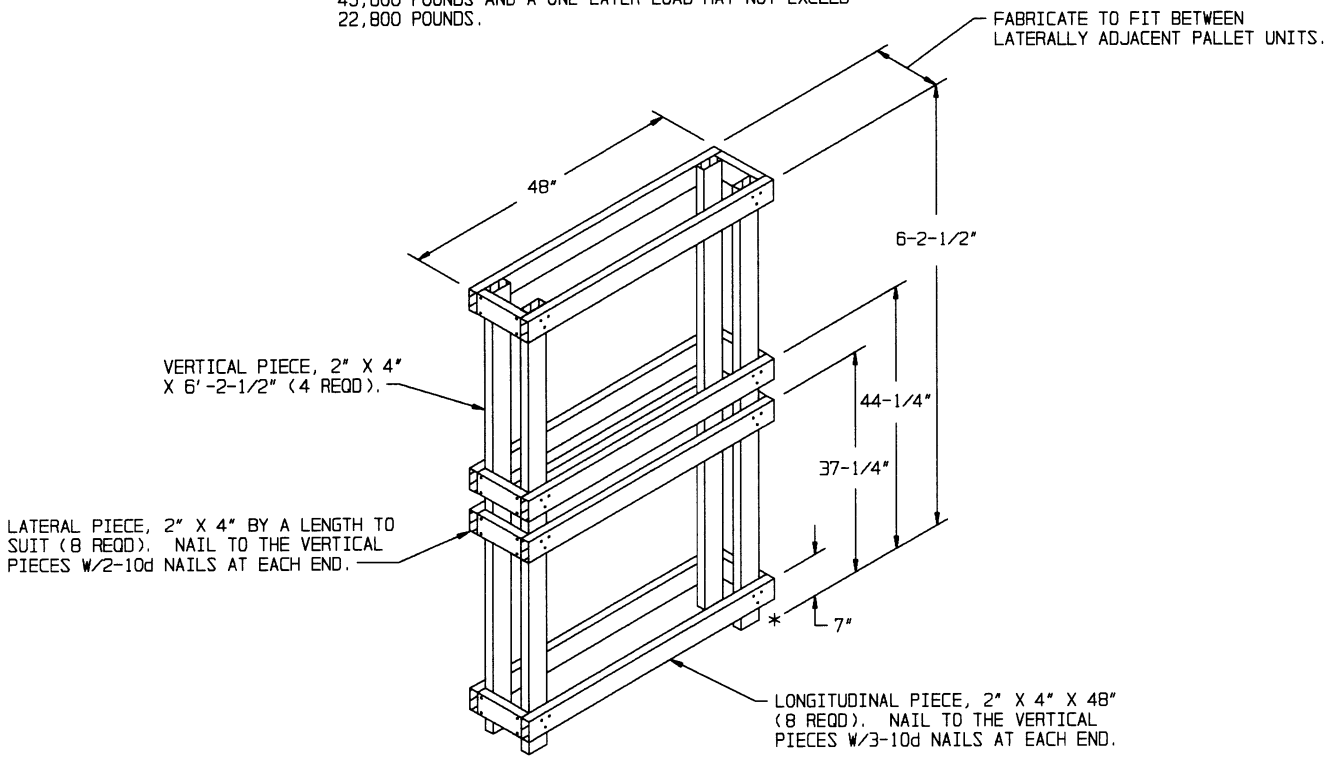
BUFFER PIECE, 2" X 4" BY INSIDE CONTAINER HEIGHT MINUS 1" (REF: 7'-8") (2 REQD). NAIL THRU PLYWOOD INTO THE BEAMS W/2-10d NAILS AT EACH JOINT.

PLYWOOD, 1/2" X 9-1/2" BY INSIDE CONTAINER WIDTH MINUS 1" (REF: 7'-7") (8 REQD). NAIL TO THE BEAMS W/1-6d NAIL EVERY 8".

BEAM, 2" X 6" BY INSIDE CONTAINER WIDTH MINUS 1" (REF: 7'-7") (8 REQD).

FORWARD/REAR BLOCKING ASSEMBLY

NOTE: FOR A ONE-HIGH LOAD, ELIMINATE THE TOP TWO BEAM ASSEMBLIES. A TWO LAYER LOAD MAY NOT EXCEED 45,600 POUNDS AND A ONE LAYER LOAD MAY NOT EXCEED 22,800 POUNDS.



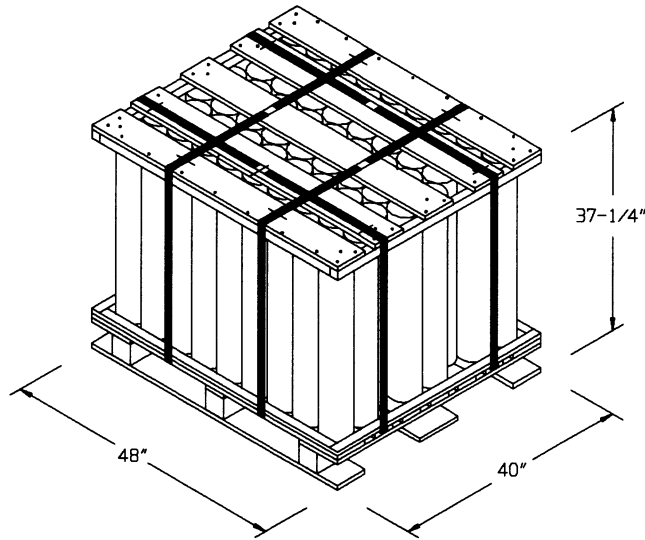
FABRICATE TO FIT BETWEEN LATERALLY ADJACENT PALLET UNITS.

VERTICAL PIECE, 2" X 4" X 6'-2-1/2" (4 REQD).

LATERAL PIECE, 2" X 4" BY A LENGTH TO SUIT (8 REQD). NAIL TO THE VERTICAL PIECES W/2-10d NAILS AT EACH END.

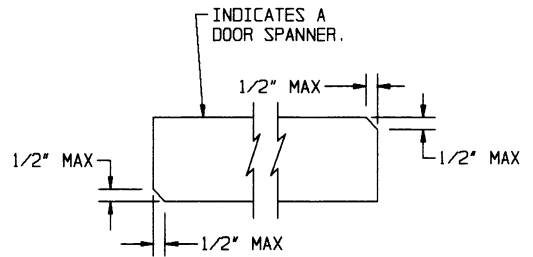
LONGITUDINAL PIECE, 2" X 4" X 48" (8 REQD). NAIL TO THE VERTICAL PIECES W/3-10d NAILS AT EACH END.

CENTER FILL ASSEMBLY



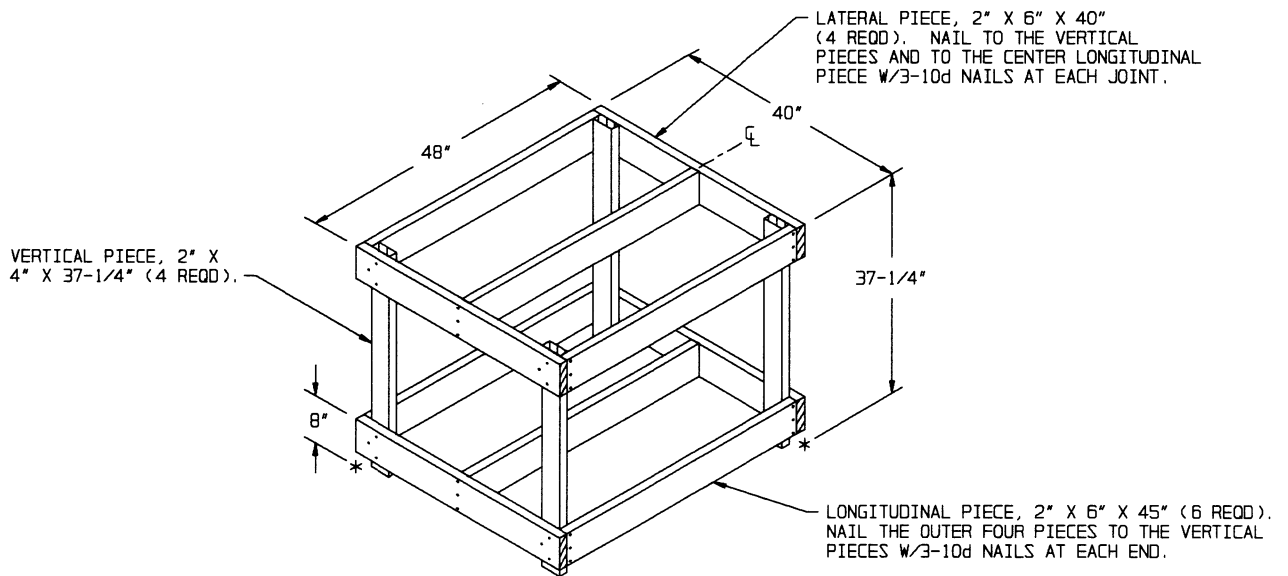
PALLET UNIT

UNIT WEIGHT - - - - 2,100 POUNDS (APPROX)
 CUBE - - - - - 41.4 CUBIC FEET



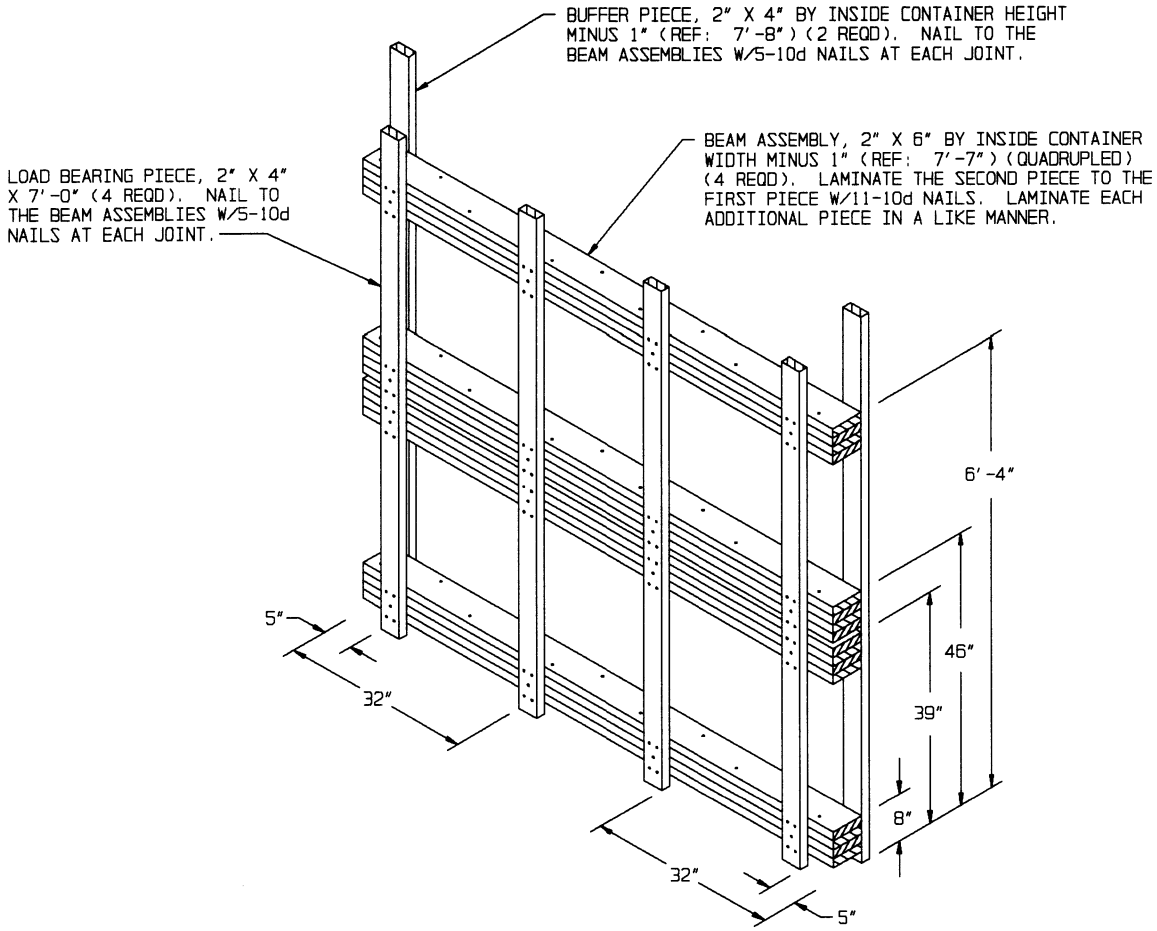
BEVEL-CUT

IF DESIRED, EACH END OF A DOOR SPANNER PIECE MAY BE BEVEL-CUT AS SHOWN ABOVE TO FACILITATE THE ACHIEVEMENT OF A TIGHT DOOR-POST-TO-DOOR-POST FIT.



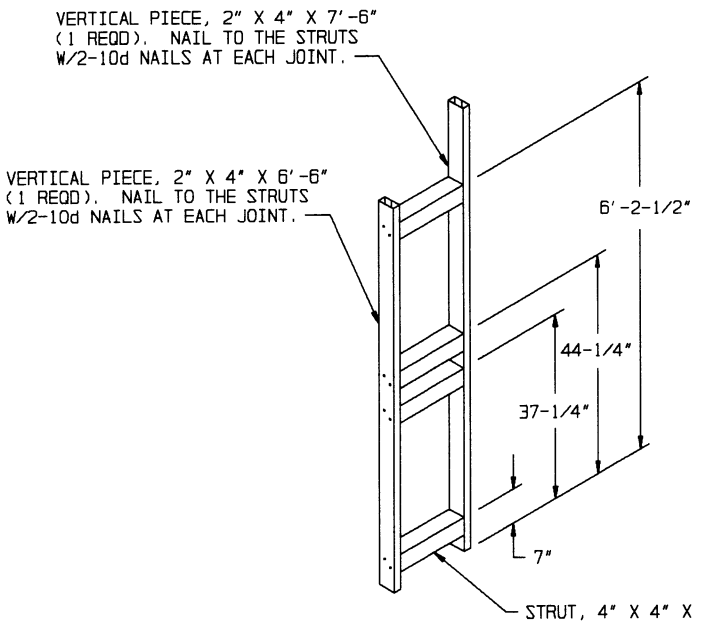
FILLER ASSEMBLY

THE ASSEMBLY DEPICTED ABOVE IS FOR USE IN PLACE OF AN OMITTED PALLET UNIT. NO MORE THAN FOUR FILLER ASSEMBLIES MAY BE USED PER LOAD. DO NOT INSTALL A FILLER ASSEMBLY IMMEDIATELY ADJACENT TO ANOTHER FILLER ASSEMBLY.



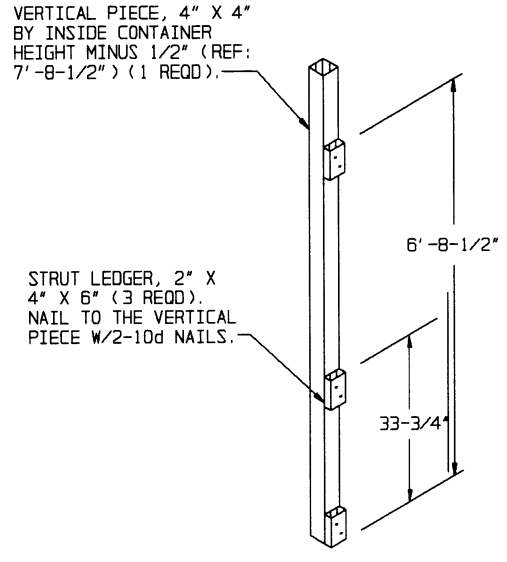
ALTERNATIVE FORWARD/REAR BLOCKING ASSEMBLY

NOTE: THE ALTERNATIVE FORWARD/REAR BLOCKING ASSEMBLY MAY BE USED IN PLACE OF THE FORWARD/REAR BLOCKING ASSEMBLY DEPICTED IN THE LOAD ON PAGE 2, IF DESIRED.

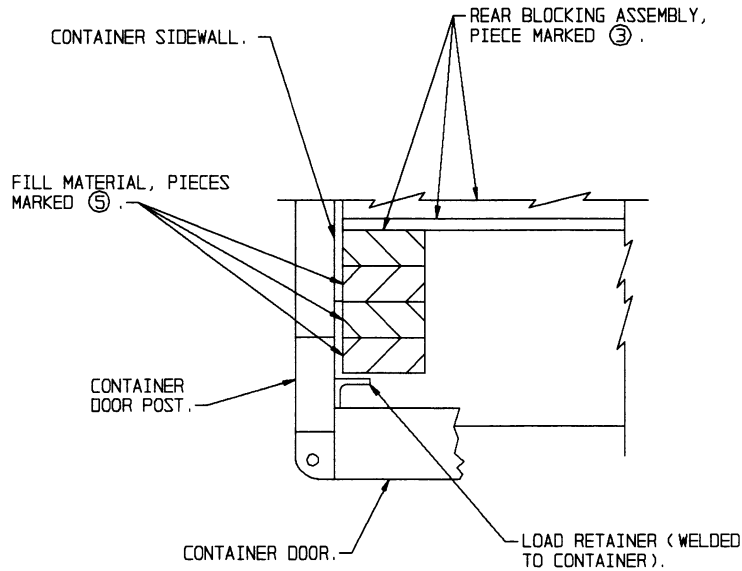


FORWARD STRUT ASSEMBLY

FOR A ONE-HIGH LOAD, REDUCE THE VERTICAL PIECES TO 48" AND ELIMINATE THE TOP TWO STRUTS.



DOOR POST VERTICAL

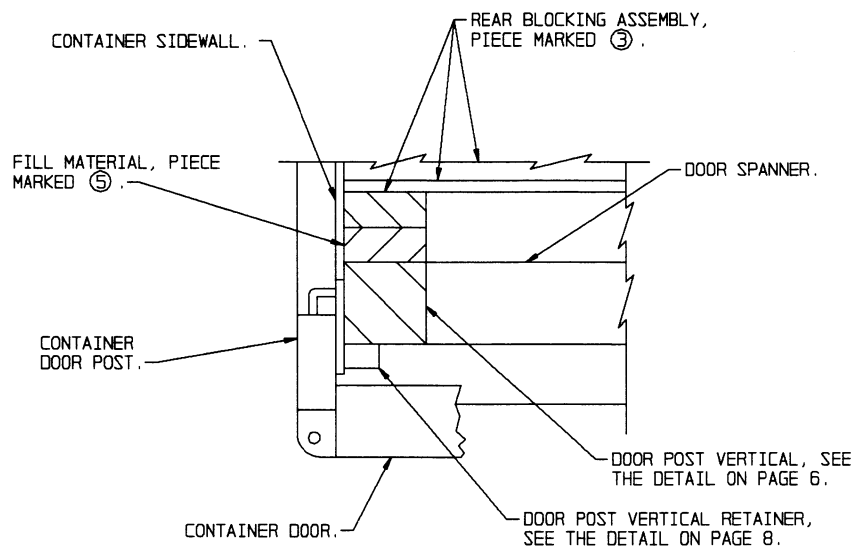


DETAIL A

A PARTIAL PLAN VIEW OF THE LEFT REAR PORTION OF THE CONTAINER IS SHOWN DEPICTING THE PROPER POSITION OF THE FILL MATERIAL AND ADJACENT DUNNAGE PIECES.

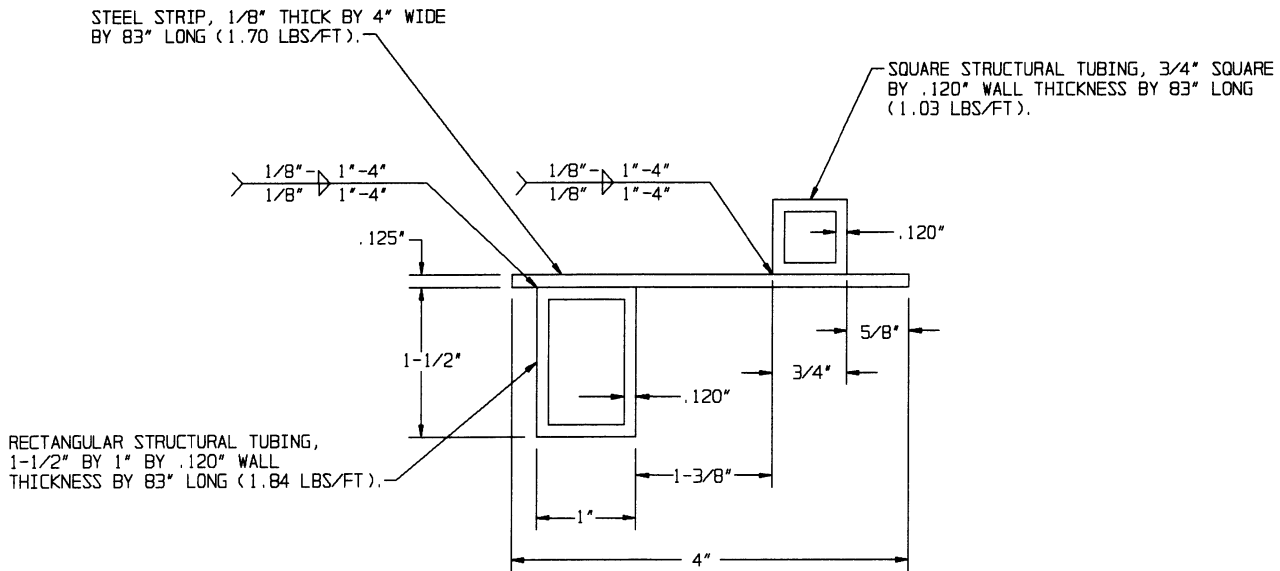
SPECIAL NOTE:

WHEN ISO CONTAINERS ARE NOT EQUIPPED WITH PRE-WELDED LOAD RETAINERS, AS DEPICTED IN "DETAIL A" ABOVE, DOOR POST VERTICALS, DOOR POST VERTICAL RETAINERS AND DOOR SPANNERS WILL BE REQUIRED FOR THE LOAD DEPICTED ON PAGE 2. SEE VARIOUS LOADS WITHIN AMC DRAWING 19-48-4153-15PA1002 FOR EXAMPLES. SEE PAGE 8 FOR DETAILS OF THE METAL DOOR POST VERTICAL RETAINER.

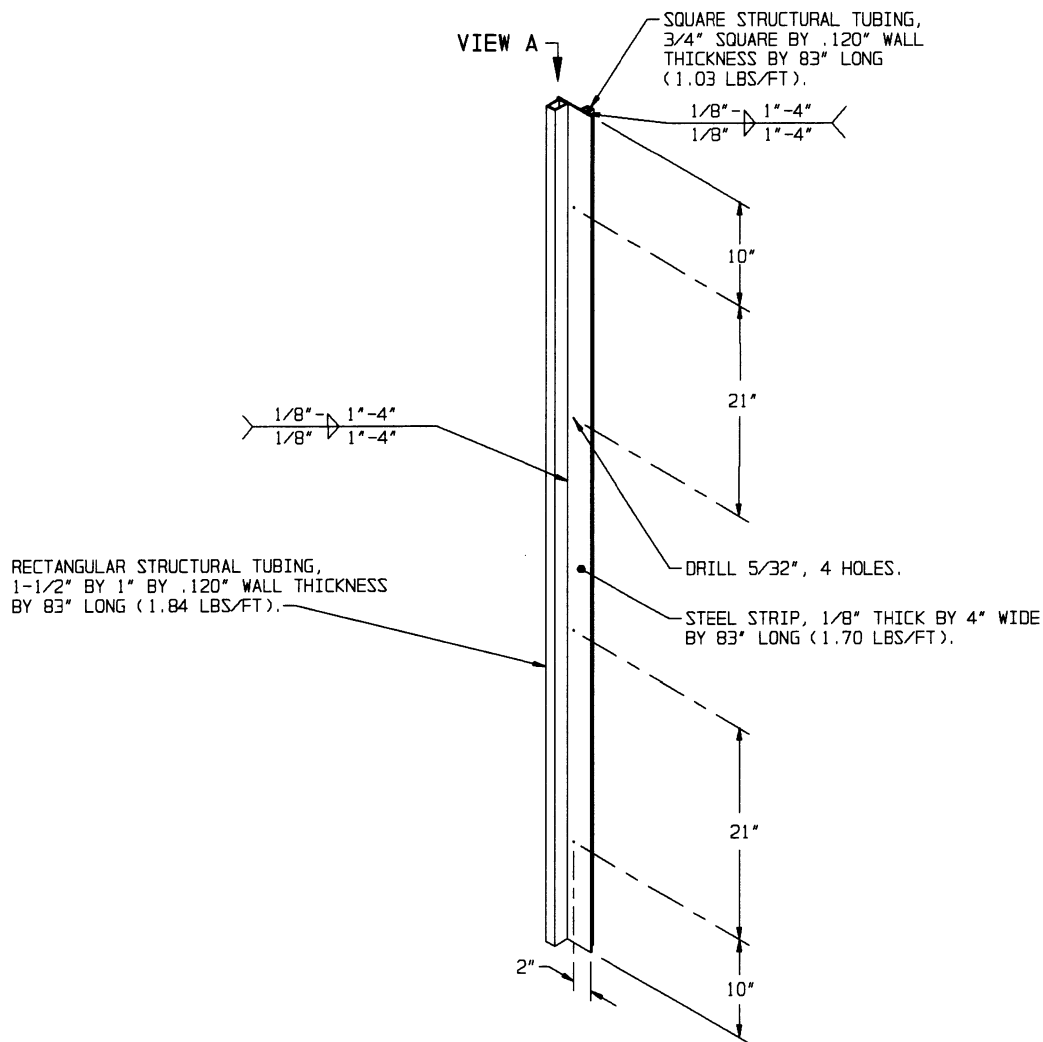


DETAIL B

A PARTIAL PLAN VIEW OF THE LEFT REAR PORTION OF THE CONTAINER IS SHOWN DEPICTING THE PROPER POSITION OF THE DOOR POST VERTICAL RETAINER AND ADJACENT DUNNAGE PIECES.



VIEW A



DOOR POST VERTICAL RETAINER

NOTE: THE ABOVE ASSEMBLY HAS BEEN SHOWN ROTATED 90° FROM THE ORIENTATION IN WHICH IT IS INSTALLED IN THE LEFT REAR CORNER OF THE CONTAINER. THE ASSEMBLY HAS BEEN ROTATED FOR HOLE LOCATION CLARITY.