

STORAGE IN APPROVED MAGAZINES OF CHARGE, DEMOLITION, LINEAR, HE M58, M58A1 & M58A2 AND INERT M68 & M68A1, IN METAL SHIPPING AND STORAGE CONTAINER

INDEX

<u>ITEM</u>	<u>PAGE(S)</u>
GENERAL NOTES, AND MATERIAL SPECIFICATIONS - - - - -	2
CONTAINER DETAIL - - - - -	3
STORAGE PROCEDURES (EARTH COVERED MAGAZINES):	
81'-0", 60'-8" AND 40'-4" L X 26'-6" W X 12'-9" H IGLOO MAGAZINES - - - - -	4,5
81'-2" L X 26'-6" W X 12'-1-3/4" H ARCH TYPE MAGAZINE - - - - -	6,7
80'-0" AND 40'-0" L X 25'-0" W X 12'-1-3/4" H ARCH TYPE MAGAZINES - - - - -	8,9
80'-0" AND 40'-0" L X 25'-0" W X 11'-0" H ARCH TYPE MAGAZINES - - - - -	10,11
80'-0" AND 40'-0" L X 25'-0" W X 10'-0" H ARCH TYPE MAGAZINES - - - - -	12,13
80'-0" L X 25'-0" W X 14'-0" H STRADLEY AND	
89'-0" L X 24'-10" W X 14'-4" H OVAL ARCH MAGAZINES - - - - -	14,15
89'-0" L X 24'-11" W X 13'-6" H STEEL ARCH MAGAZINE - - - - -	16,17
52'-0" AND 44'-7" DIA CORBETTA MAGAZINES - - - - -	18,19
100'-8" L X 50'-0" W RECTANGULAR MAGAZINE - - - - -	20,21
60'-0" L X 40'-0" W X 15'-0" H TYPE II BUNKER MAGAZINE - - - - -	22,23
60'-0" L X 40'-0" W X 11'-0" H TYPE III BUNKER MAGAZINE - - - - -	24,25
40'-0" L X 20'-0" W X 11'-0" H TYPE IV BUNKER MAGAZINE - - - - -	26,27

U.S. ARMY MATERIEL COMMAND DRAWING

APPROVED, U.S. ARMY ARMAMENT, MUNITIONS AND CHEMICAL COMMAND <i>NLIH</i>		DRAFTSMAN	INGEBORG DEPPE	
<i>David A. Piskoril</i>		ENGINEER	M. DAEUMER	
AMSTA-AR-ESK		SUPPLY ENGINEERING DIVISION		<i>[Signature]</i>
APPROVED BY ORDER OF COMMANDING GENERAL, U.S. ARMY MATERIEL COMMAND		LOGISTICS ENGINEERING OFFICE		<i>[Signature]</i>
<i>William J Ernst</i>		FEBRUARY 1986		
U.S. ARMY DEFENSE AMMUNITION CENTER AND SCHOOL		CLASS	DIVISION	DRAWING
REVISION NO. 1	JUNE 1995	19	48	4208
SEE THE REVISION LISTING ON PAGE 2		1-3-4-14-22J1008		

DO NOT SCALE

GENERAL NOTES

(GENERAL NOTES CONTINUED)

- A. THIS DOCUMENT HAS BEEN PREPARED AND ISSUED IN ACCORDANCE WITH AR 740-1 AND AUGMENTS TM 743-200-1 (CHAPTER 5).
- B. THE STORAGE PROCEDURES SPECIFIED HEREIN ARE APPLICABLE TO LINEAR DEMOLITION CHARGES, HE M58, M58A1 AND M58A2 AND INERT M68 AND M68A1, IN METAL SHIPPING AND STORAGE CONTAINER. SUBSEQUENT REFERENCE TO CONTAINER MEANS THE SHIPPING AND STORAGE CONTAINER WITH CONTENTS.

- C. FOR DETAILS OF THE SHIPPING AND STORAGE CONTAINER, SEE THE DETAIL ON PAGE 3.

CONTAINER DIMENSIONS - - - 7'-10-3/4" L X 54" W X 25" H
SEE GENERAL NOTE "R" AT RIGHT.

GROSS WEIGHT (APPROX)

WITH HE COMP C4, M58 CHARGE, DODIC M025 - - - 3,000 LBS
WITH HE COMP C4, M58A1 CHARGE, DODIC M025 - - - 3,000 LBS
WITH HE COMP C54, M58A1 CHARGE, DODIC M913 - - - 3,000 LBS
WITH HE COMP C4, M58A2 CHARGE, DODIC M913 - - - 3,000 LBS
WITH INERT, M68 CHARGE, DODIC M051 - - - - - 3,000 LBS
WITH INERT, M68A1 CHARGE, DODIC M051 - - - - - 3,000 LBS

CUBE - - - - - 71.4 CUBIC FEET

- D. THIS ITEM, WHEN AN M58, M58A1 OR M58A2 CHARGE, IS A QD CLASS 1.1, COMP GROUP D EXPLOSIVE. TO PERMIT STORAGE OF THESE ITEMS, THE MAGAZINE MUST HAVE A DOOR OPENING NOT LESS THAN 5'-0" WIDE. HOWEVER, AN 8'-0" OR WIDER OPENING WILL FACILITATE HANDLING OPERATIONS. SEE GENERAL NOTE "P" AT RIGHT.

- E. THE STORAGE PROCEDURES DEPICTED WITHIN THIS DOCUMENT ARE APPLICABLE FOR STORAGE IN VARIOUS TYPES AND SIZES OF MAGAZINES. THE STORAGE PROCEDURES DEPICTED FOR THE SPECIFIC TYPES OF MAGAZINES MAY ALSO BE UTILIZED TO STORE CONTAINERS IN OTHER TYPES OF APPROVED MAGAZINES. MINOR ADJUSTMENTS MAY BE MADE TO FACILITATE STORAGE IN OTHER TYPES OF MAGAZINES, HOWEVER, THE BASIC PRINCIPLES AS DEPICTED HEREIN WILL BE FOLLOWED. SEE GENERAL NOTE "M".

- F. AISLE DIMENSIONS SHOWN HEREIN MAY BE ADJUSTED TO SUIT LOCAL CONDITIONS AND/OR AVAILABLE MATERIALS HANDLING EQUIPMENT.

- G. CAUTION: THE ALLOWABLE "EXPLOSIVE LIMIT" ESTABLISHED FOR A MAGAZINE IS NOT TO BE EXCEEDED. THIS LIMITATION MAY REQUIRE A QUANTITY REDUCTION FROM THE STORAGE AS SHOWN. SEE GENERAL NOTE "N".

- H. COVER SPANNER DUNNAGE, 2" X 6" X 54", AS DEPICTED IN THE STORAGE VIEWS, IS REQUIRED BETWEEN LAYERS UNDER SKIDS AT EACH END OF EACH CONTAINER. EACH UPPER LAYER CONTAINER WITHIN A STACK MUST BE POSITIONED IN THE SAME DIRECTION AS THE CONTAINER IMMEDIATELY BELOW. SO THAT ALL SKIDS ARE IN VERTICAL ALIGNMENT.

- J. IF AVAILABLE MHE PERMITS, ADDITIONAL CONTAINERS MAY BE STORED WITHIN THE FRONTAL AREA AND/OR OTHER AVAILABLE AREA OF THE MAGAZINE.

- K. STORED CONTAINERS MUST NOT CONTACT THE WALLS OF A MAGAZINE. TO PROVIDE FOR THIS MANDATORY CLEARANCE REQUIREMENT, CONTAINERS MAY BE ELIMINATED FROM THE DEPICTED STORAGE PATTERN AS NECESSARY.

- L. OTHER COMPATIBLE ITEMS MAY BE STORED IN A MAGAZINE WHICH IS PARTIALLY FILLED WITH THE DESIGNATED ITEM.

- M. TO ASSURE MAXIMUM STORAGE OF CONTAINERS, AS SHOWN HEREIN, CONTAINERS SHOULD BE STORED AS TIGHTLY AS POSSIBLE, LENGTHWISE AND WIDTHWISE. HOWEVER, IN SOME MAGAZINES, WHERE SPACE PERMITS, CONTAINERS MAY BE SLIGHTLY SEPARATED TO FACILITATE MHE PLACEMENT INTO THE STACKS.

- N. IF THE QUANTITY OF CONTAINERS FOR A DEPICTED MAGAZINE IS TO BE REDUCED FROM WHAT IS SHOWN DUE TO THE PERMITTED "EXPLOSIVE LIMIT" OR FOR ANY OTHER REASON, SUCH AS A LIMITED QUANTITY TO BE STORED, THE DELINEATED PROCEDURES ARE TO BE ADJUSTED BY OMITTING STACKS RATHER THAN BY OMITTING LAYERS. SEE GENERAL NOTE "L".

- O. CONVERSION TO METRIC EQUIVALENTS: DIMENSIONS WITHIN THIS DOCUMENT ARE EXPRESSED IN INCHES, AND WEIGHTS ARE EXPRESSED IN POUNDS. WHEN NECESSARY, THE METRIC EQUIVALENT MAY BE COMPUTED ON THE BASIS OF ONE INCH EQUALS 25.4 MM, AND ONE POUND EQUALS 0.454 KG.

- P. MAGAZINES WITH DOOR OPENING LESS THAN 8'-0" WIDE WILL REQUIRE END-HANDLING OF THE CONTAINERS THRU THE DOORWAY. SINCE THE DEPICTED CONTAINER DOES NOT HAVE BUILT-IN PROVISIONS FOR END-HANDLING, IT CAN BE PLACED ON BLOCKS OR OTHERWISE ELEVATED SUFFICIENTLY TO PERMIT PLACEMENT OF THE TINES OF TWO FORKLIFT TRUCKS OR PALLET JACKS UNDER THE SKIDS, AT BOTH ENDS OF THE CONTAINER AND THEN JOINTLY HANDLED THROUGH THE DOOR OPENING. OTHER METHODS AND EQUIPMENT, SUCH AS SECTIONS OF ROLLER CONVEYORS, ETC, MAY BE USED IF THEY PROVIDE FOR SAFE HANDLING OF THE CONTAINER THROUGH NARROWER DOOR OPENINGS.

- R. THIS DRAWING ORIGINALLY DEPICTED PROCEDURES FOR STORING THE DESIGNATED ITEMS WHEN PACKED IN A CONTAINER EQUIPPED WITH LATCHES AND HAVING OVERALL DIMENSIONS OF 7'-9" L X 53" W X 25" H. IF THESE SLIGHTLY SHORTER AND NARROWER CONTAINERS ARE TO BE STORED, THIS REVISED DRAWING WILL APPLY.

- S. CONTAINERS PRESENTLY STORED IN ACCORDANCE WITH A PRIOR APPROVED DRAWING NEED NOT BE RE-STORED SOLELY TO CONFORM TO THE PROCEDURES SPECIFIED IN THIS REVISED DOCUMENT.

REVISION

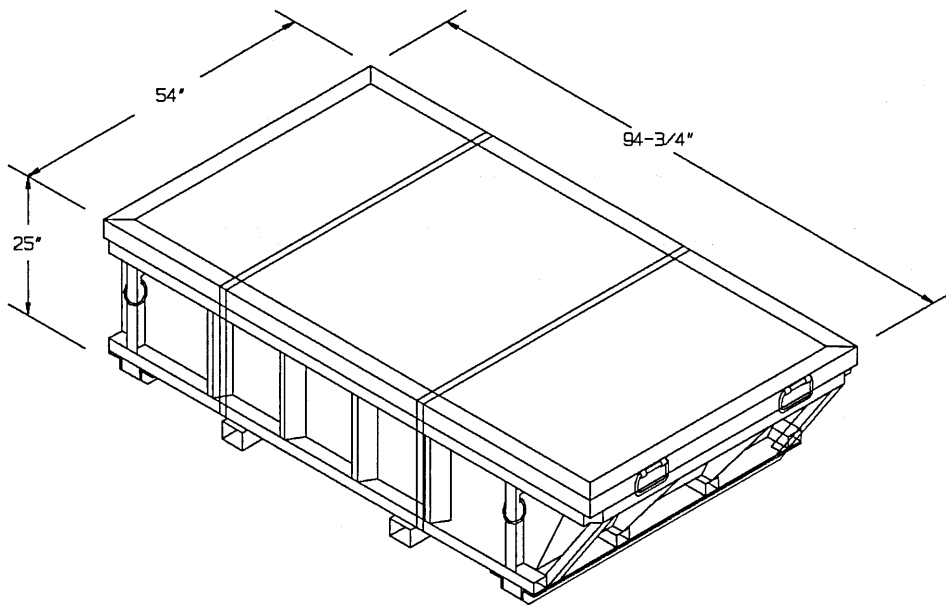
REVISION NO. 1, DATED JUNE 1995, CONSISTS OF:

1. UPDATING DRAWING FORMAT AND GENERAL NOTES TO CURRENT STANDARDS.
2. ADDING GENERAL NOTES "R" AND "S".
3. CHANGING DIMENSIONS IN THE STORAGE VIEWS, AS REQUIRED, TO FACILITATE STORAGE OF THE CONTAINER DEPICTED ON PAGE 3.
4. REVISING PROCEDURES AS REQUIRED.
5. ADDING PROCEDURES FOR 89'-0" STEEL ARCH MAGAZINE.

(CONTINUED AT RIGHT)

MATERIAL SPECIFICATIONS

LUMBER - - - - -; SEE TM 743-200-1 (DUNNAGE LUMBER) AND FED SPEC MM-L-751.



CONTAINER DETAIL

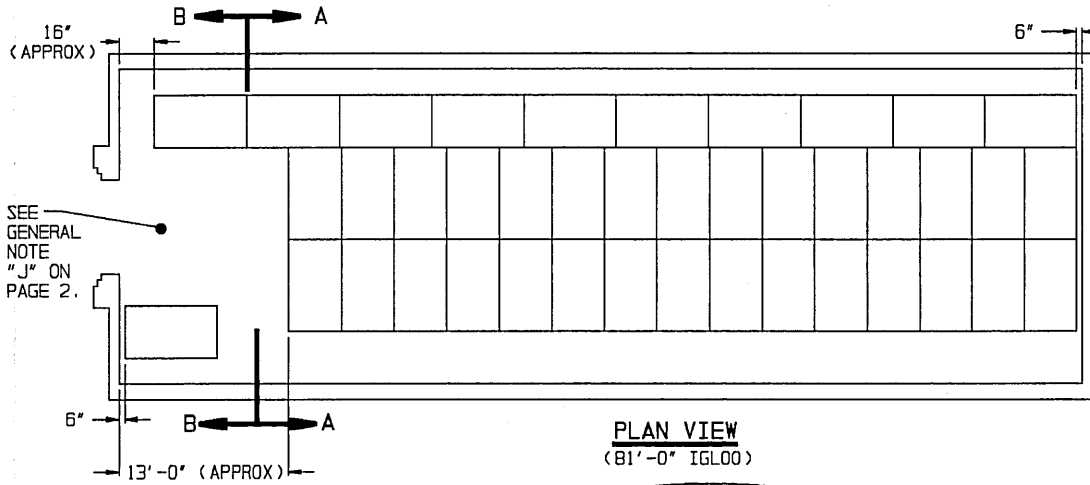
NOTE: CONTAINERS CANNOT BE STACKED UNLESS COVER SPANNER DUNNAGE IS PROVIDED UNDER SKIDS BETWEEN LAYERS. EACH UPPER LAYER CONTAINER WITHIN A STACK MUST BE POSITIONED IN THE SAME DIRECTION AS THE CONTAINER IMMEDIATELY BELOW SO THAT ALL SKIDS ARE IN VERTICAL ALIGNMENT.

CONTAINER DETAIL

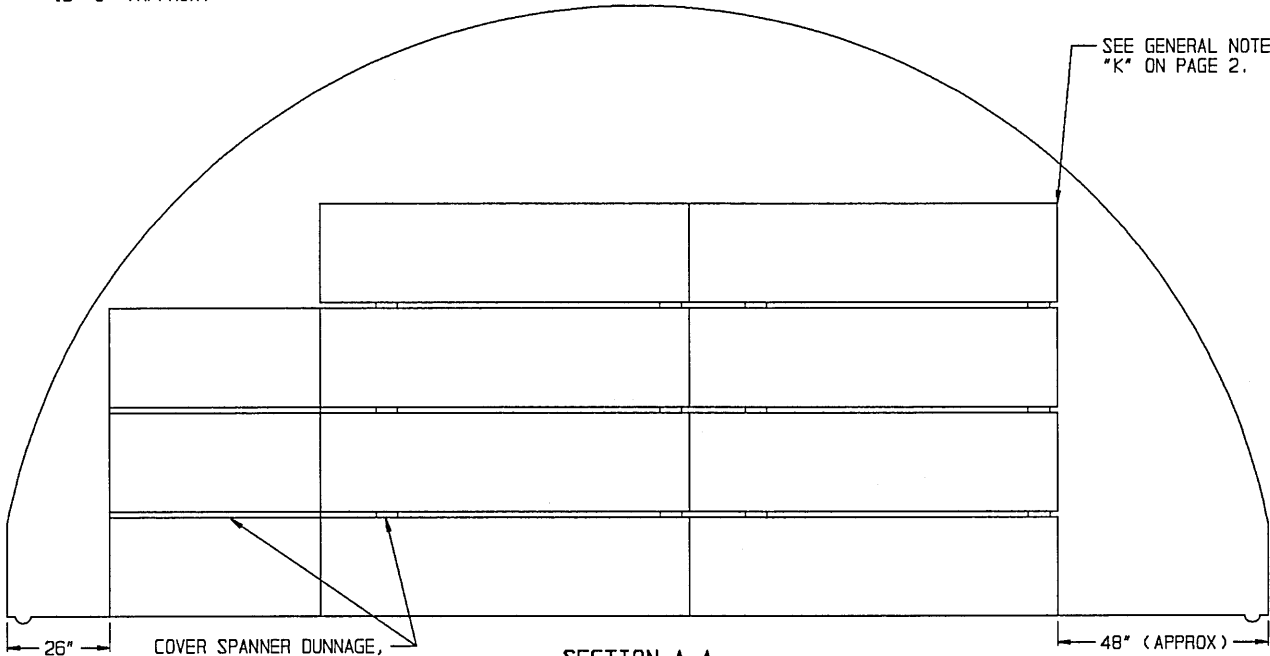
STORAGE IN 81'-0" IGL00

(12'-9" HIGH)

ITEM	QUANTITY
CONTAINERS	----- 153



PLAN VIEW
(81'-0" IGL00)

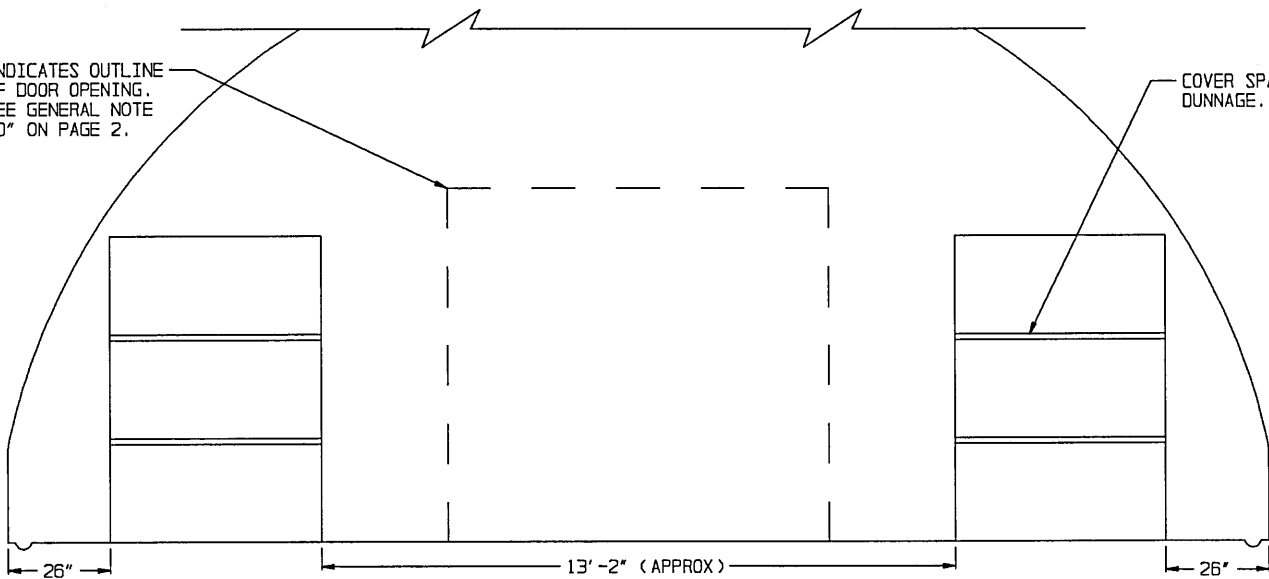


SECTION A-A

COVER SPANNER DUNNAGE, 2" X 6" X 54" (2 REOD PER UPPER LAYER CONTAINER).

INDICATES OUTLINE OF DOOR OPENING. SEE GENERAL NOTE "D" ON PAGE 2.

COVER SPANNER DUNNAGE.



SECTION B-B

STORAGE IN 60'-8" IGL00

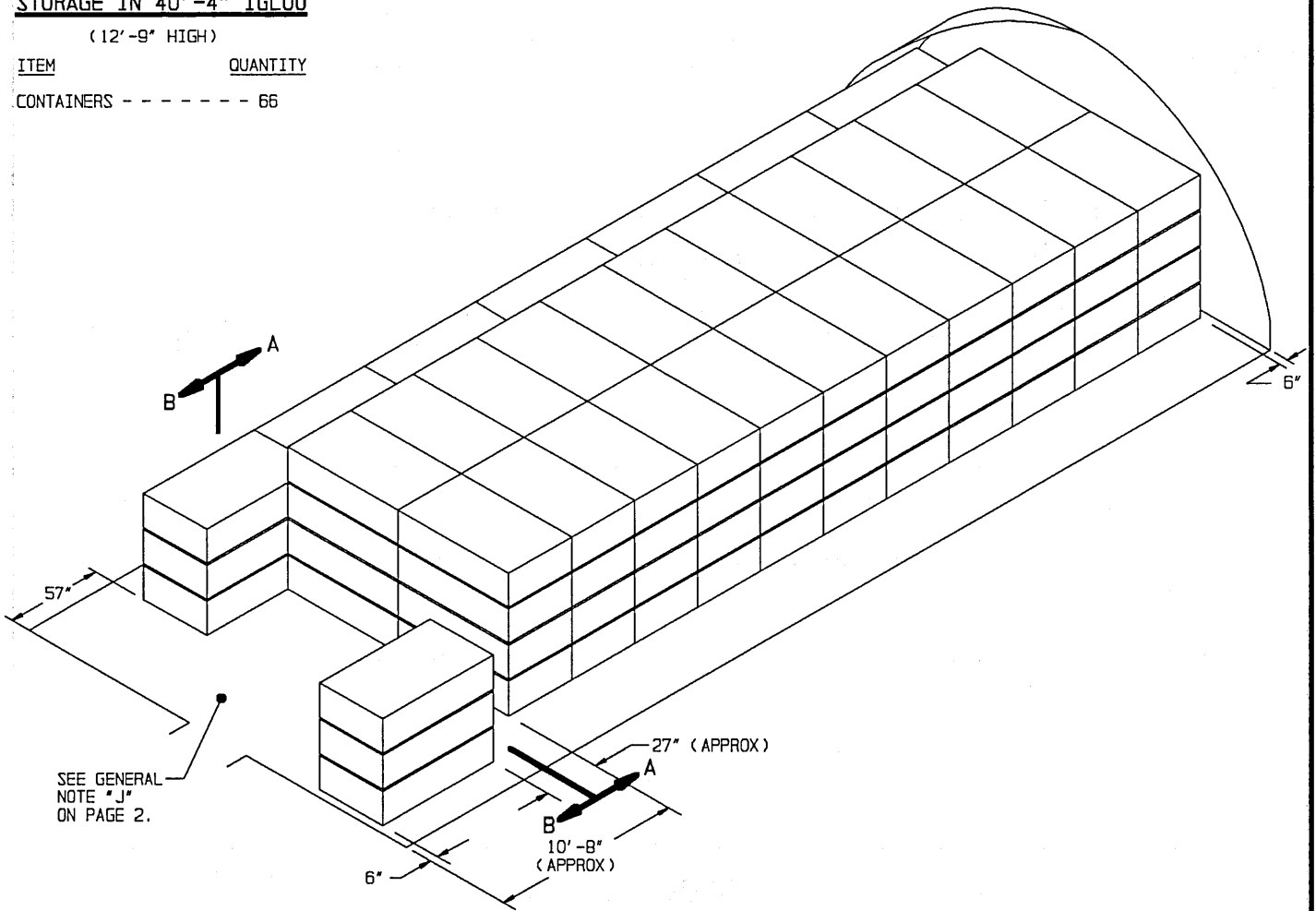
(12'-9" HIGH)

ITEM	QUANTITY
CONTAINERS - - - - -	112

STORAGE IN 40'-4" IGL00

(12'-9" HIGH)

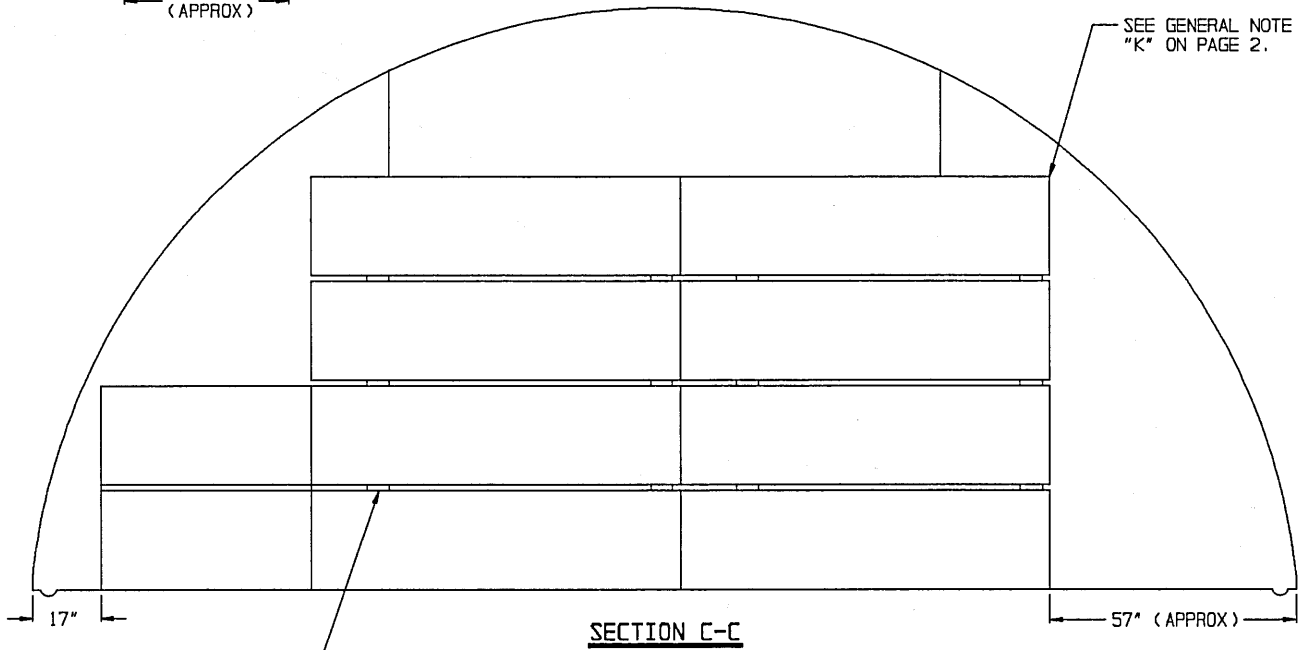
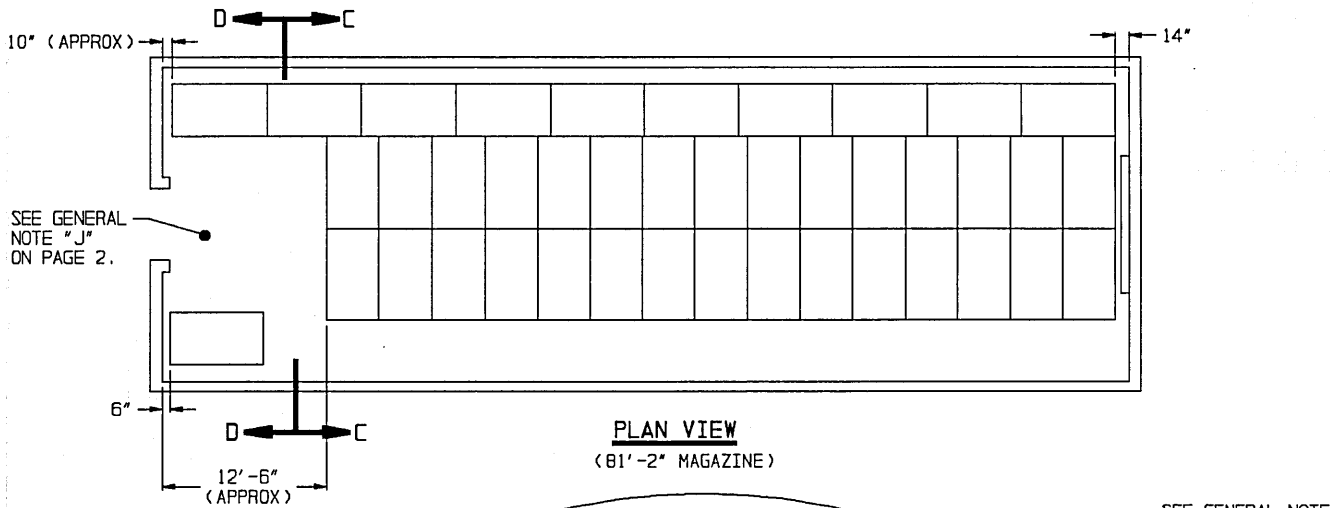
ITEM	QUANTITY
CONTAINERS - - - - -	66



ISOMETRIC VIEW
(60'-8" IGL00)

FOR "GENERAL NOTES" AND "MATERIAL SPECIFICATIONS", SEE PAGE 2.

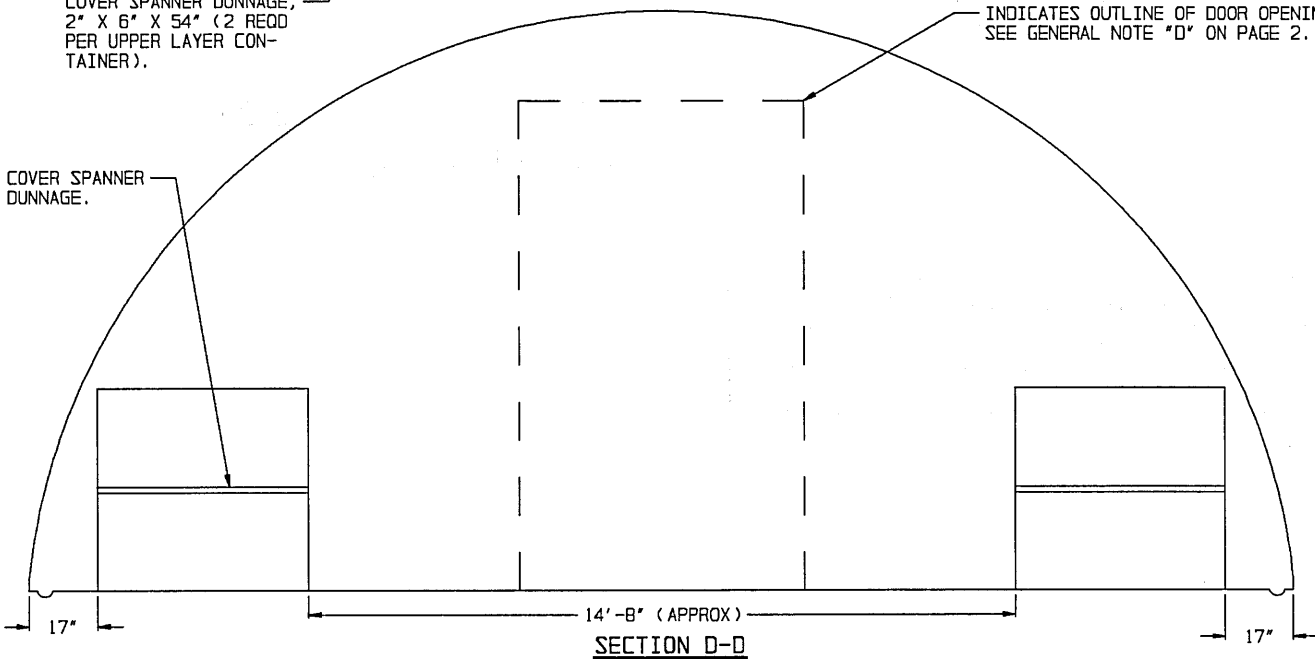
BILL OF MATERIAL (PER UPPER LAYER CONTAINER)		
LUMBER	LINEAR FEET	BOARD FEET
2" X 6"	9	9



COVER SPANNER DUNNAGE, 2" X 6" X 54" (2 REQD PER UPPER LAYER CONTAINER).

INDICATES OUTLINE OF DOOR OPENING. SEE GENERAL NOTE "D" ON PAGE 2.

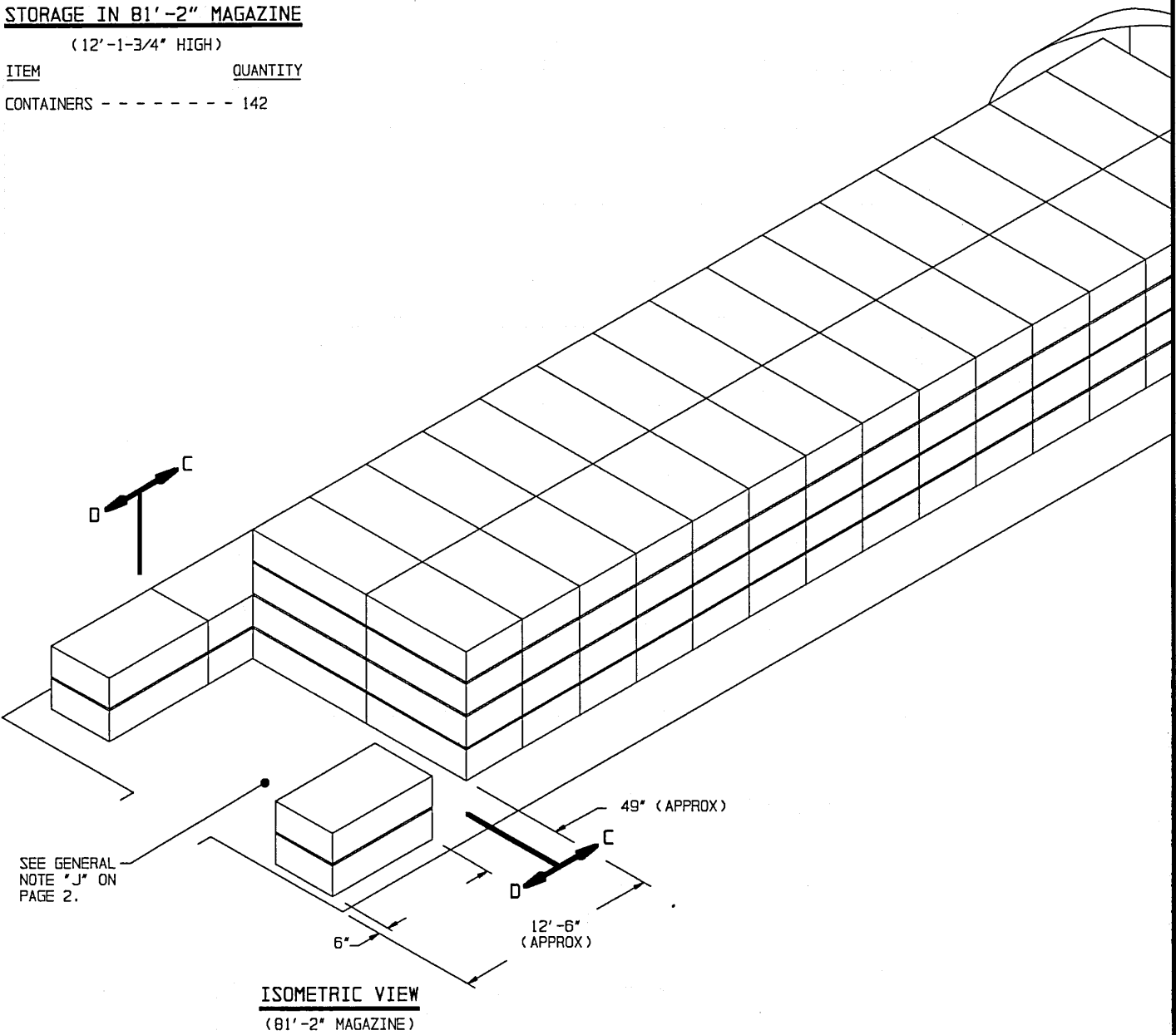
COVER SPANNER DUNNAGE.



STORAGE IN 81'-2" MAGAZINE

(12'-1-3/4" HIGH)

ITEM QUANTITY
CONTAINERS - - - - - 142



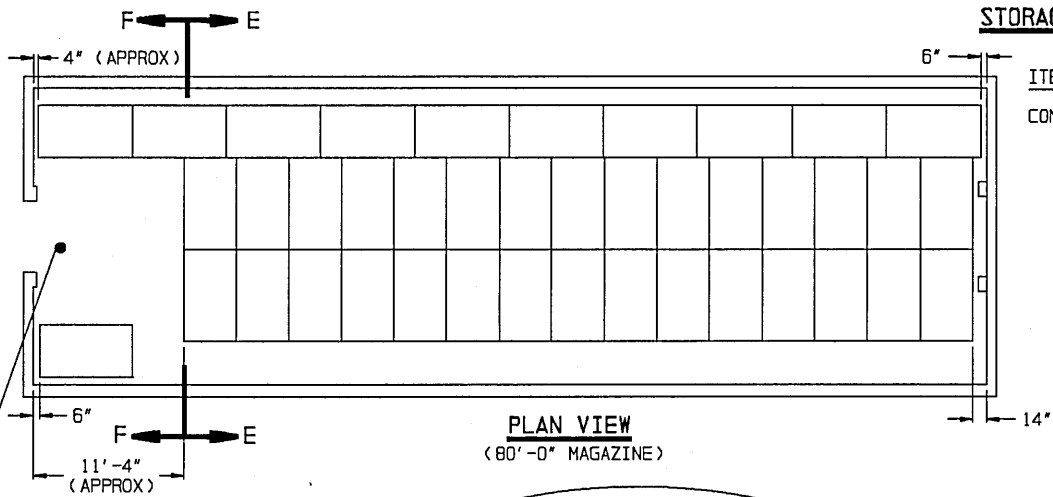
FOR "GENERAL NOTES" AND "MATERIAL SPECIFICATIONS", SEE PAGE 2.

BILL OF MATERIAL (PER UPPER LAYER CONTAINER)		
LUMBER	LINEAR FEET	BOARD FEET
2" X 6"	9	9

STORAGE IN 80'-0" MAGAZINE

(12'-1-3/4" HIGH)

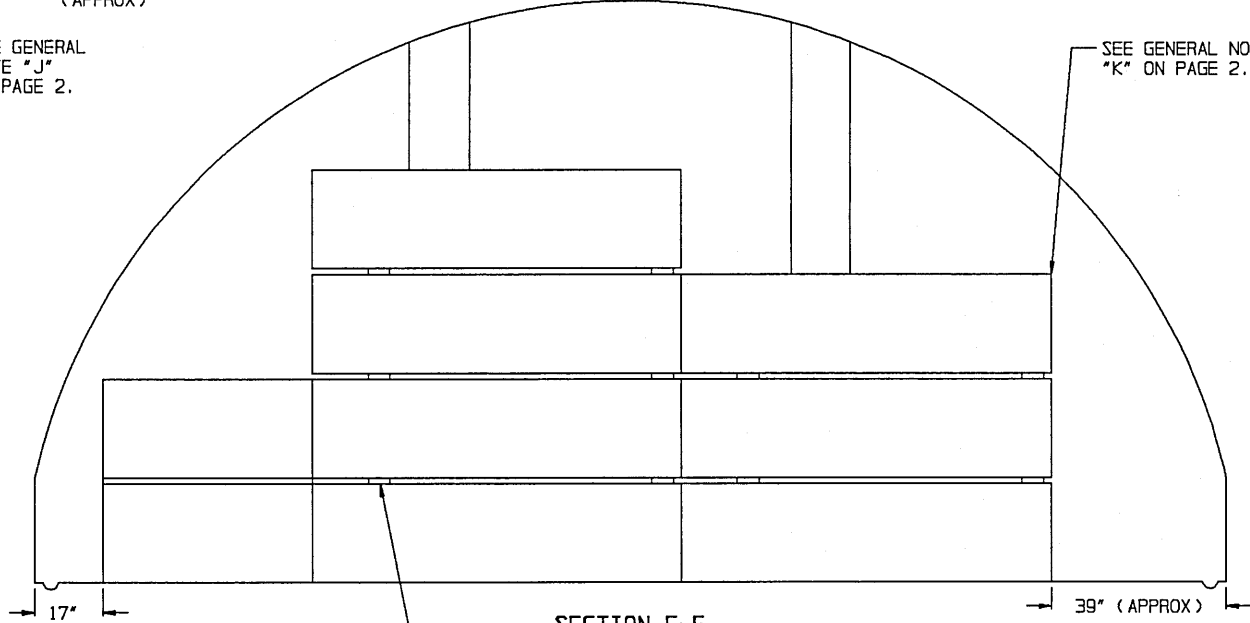
ITEM	QUANTITY
CONTAINERS	----- 128



PLAN VIEW
(80'-0" MAGAZINE)

SEE GENERAL NOTE "J" ON PAGE 2.

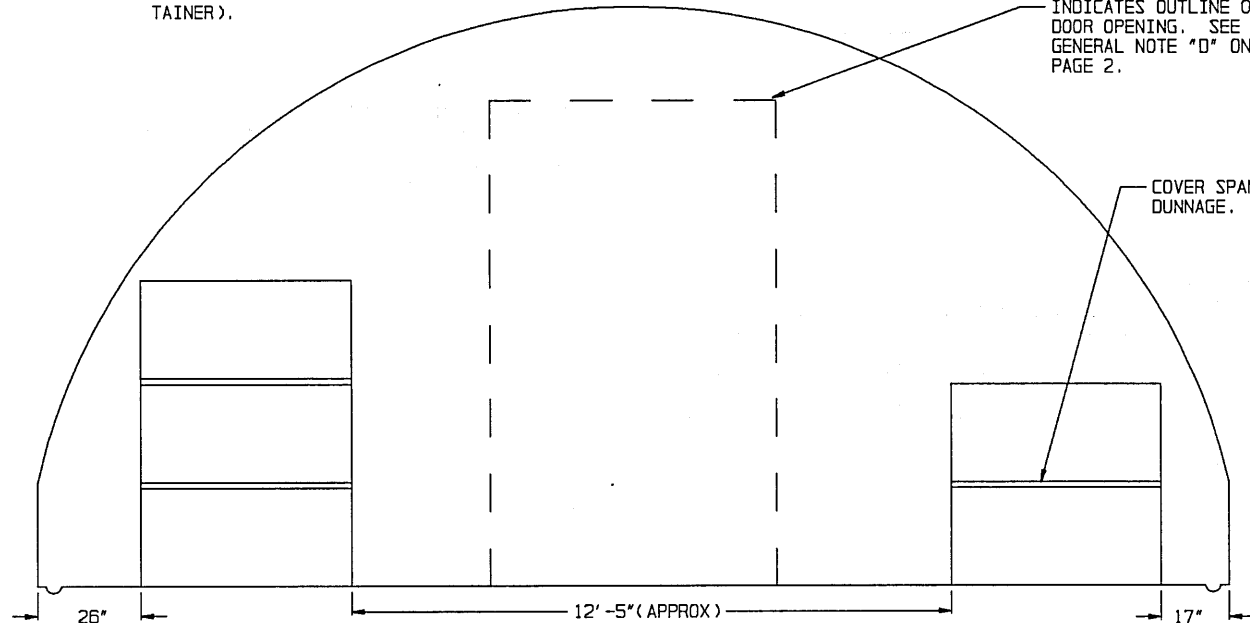
SEE GENERAL NOTE "K" ON PAGE 2.



SECTION E-E

COVER SPANNER DUNNAGE, 2" X 6" X 54" (2 REOD PER UPPER LAYER CONTAINER).

INDICATES OUTLINE OF DOOR OPENING. SEE GENERAL NOTE "D" ON PAGE 2.



SECTION F-F

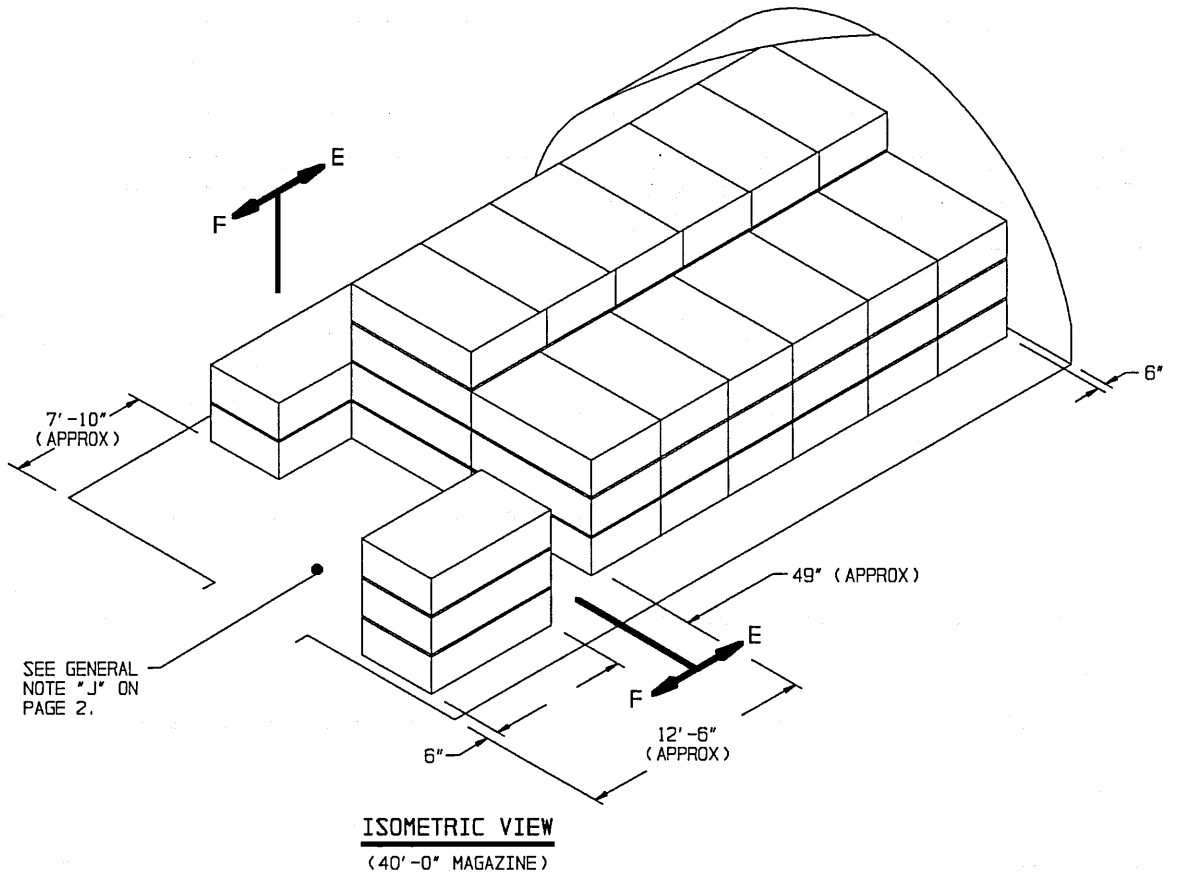
COVER SPANNER DUNNAGE.

STORAGE IN 40'-0" MAGAZINE

(12'-1-3/4" HIGH)

ITEM QUANTITY

CONTAINERS - - - - - 53



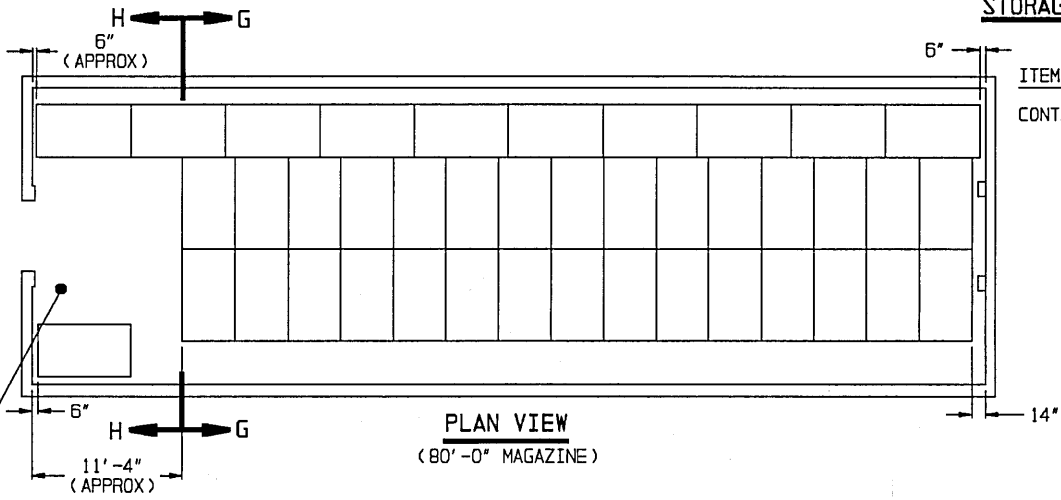
FOR "GENERAL NOTES" AND "MATERIAL SPECIFICATIONS", SEE PAGE 2.

BILL OF MATERIAL (PER UPPER LAYER CONTAINER)		
LUMBER	LINEAR FEET	BOARD FEET
2" X 6"	9	9

STORAGE IN 80'-0" MAGAZINE

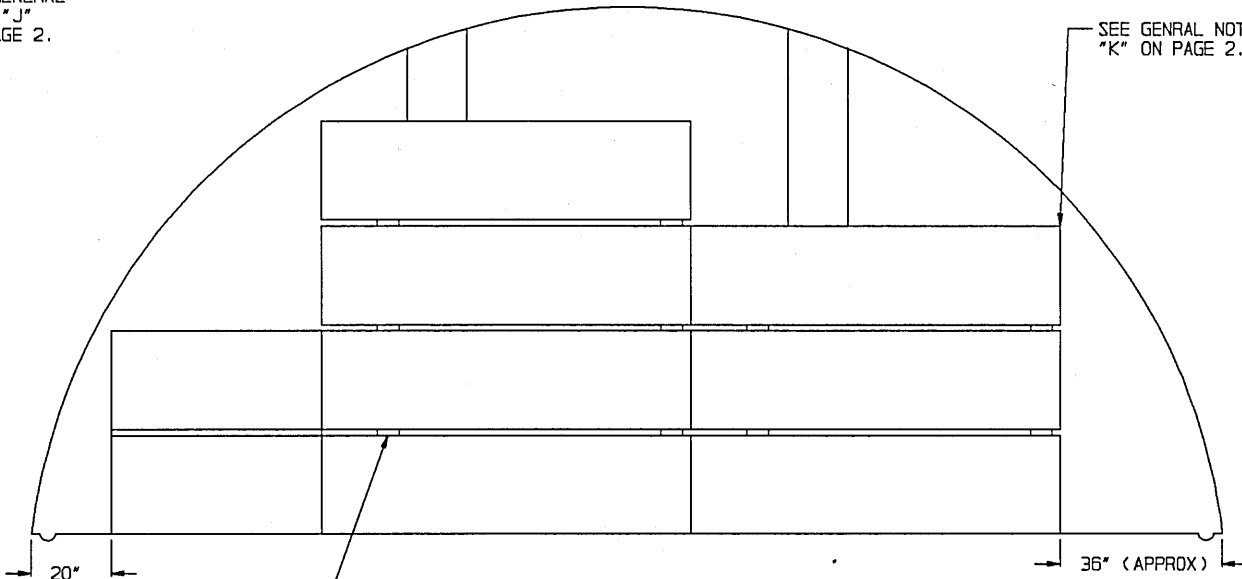
(11'-0" HIGH)

ITEM	QUANTITY
CONTAINERS	----- 127



SEE GENERAL NOTE "J" ON PAGE 2.

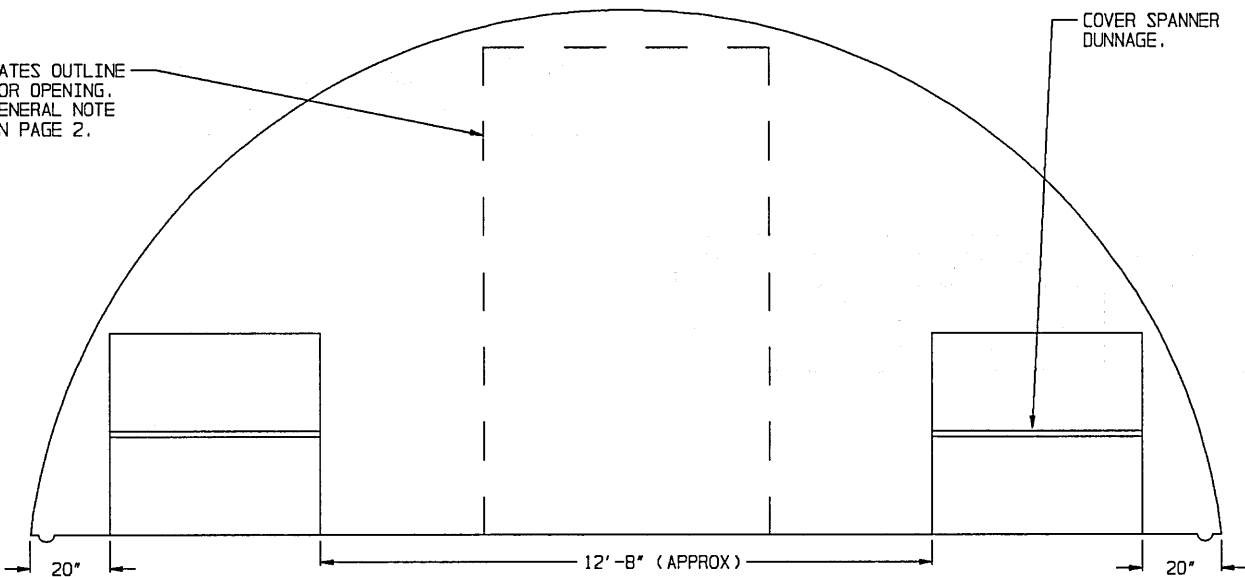
SEE GENERAL NOTE "K" ON PAGE 2.



COVER SPANNER DUNNAGE, 2" X 6" X 54" (2 REQD PER UPPER LAYER CONTAINER).

INDICATES OUTLINE OF DOOR OPENING. SEE GENERAL NOTE "D" ON PAGE 2.

COVER SPANNER DUNNAGE.

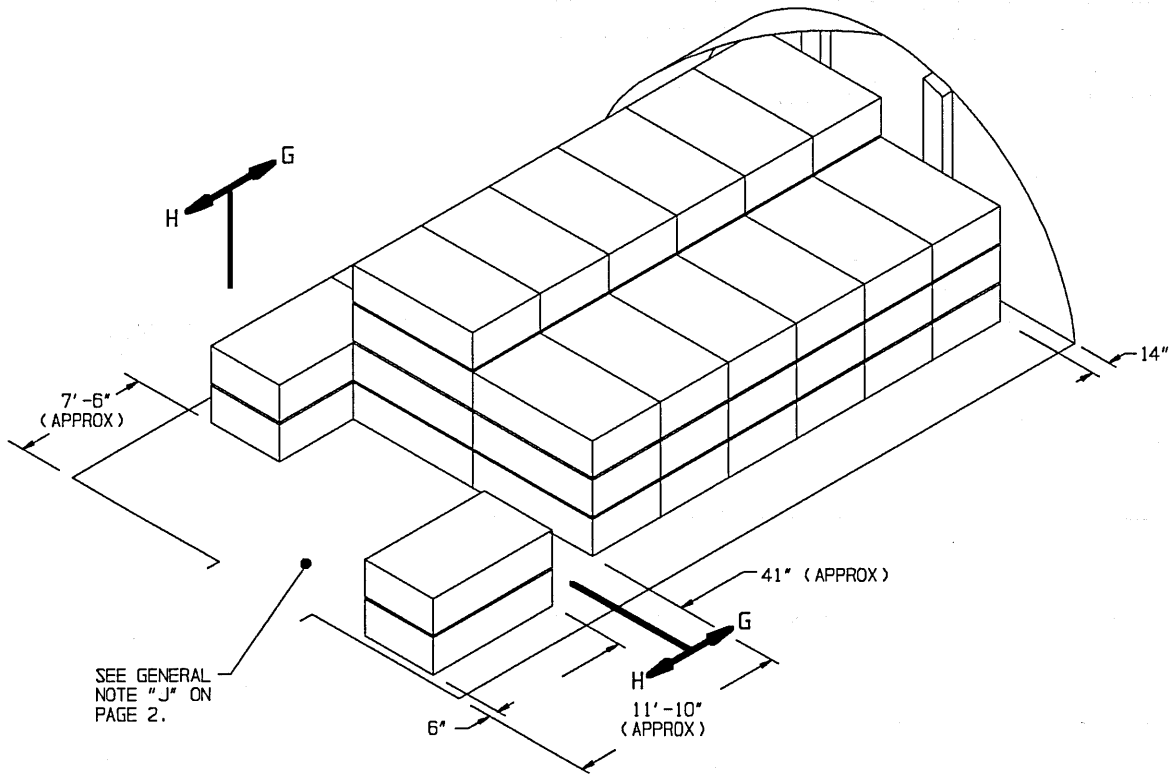


STORAGE IN 40'-0" MAGAZINE

(11'-0" HIGH)

ITEM QUANTITY

CONTAINERS - - - - - 52



SEE GENERAL NOTE "J" ON PAGE 2.

ISOMETRIC VIEW
(40'-0" MAGAZINE)

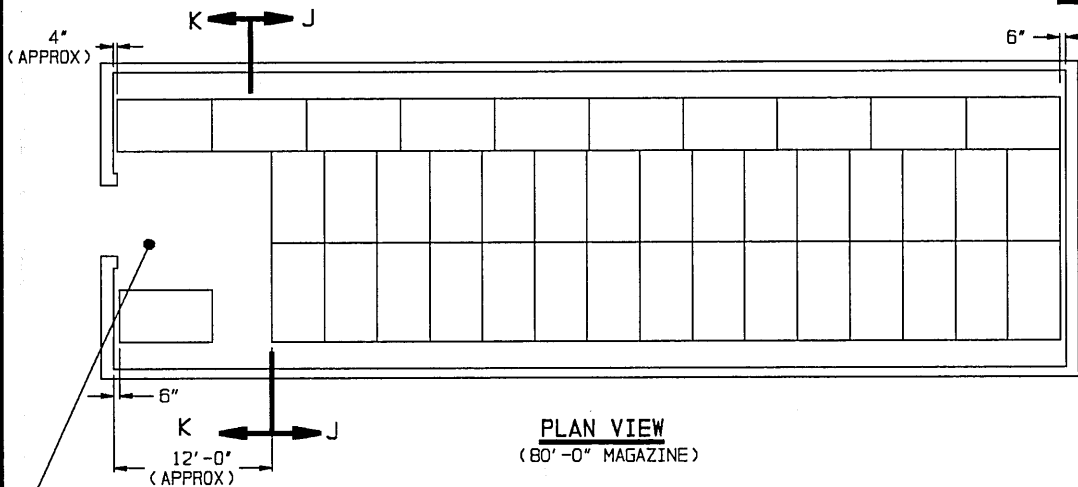
FOR "GENERAL NOTES" AND "MATERIAL SPECIFICATIONS", SEE PAGE 2.

BILL OF MATERIAL (PER UPPER LAYER CONTAINER)		
LUMBER	LINEAR FEET	BOARD FEET
2" X 6"	9	9

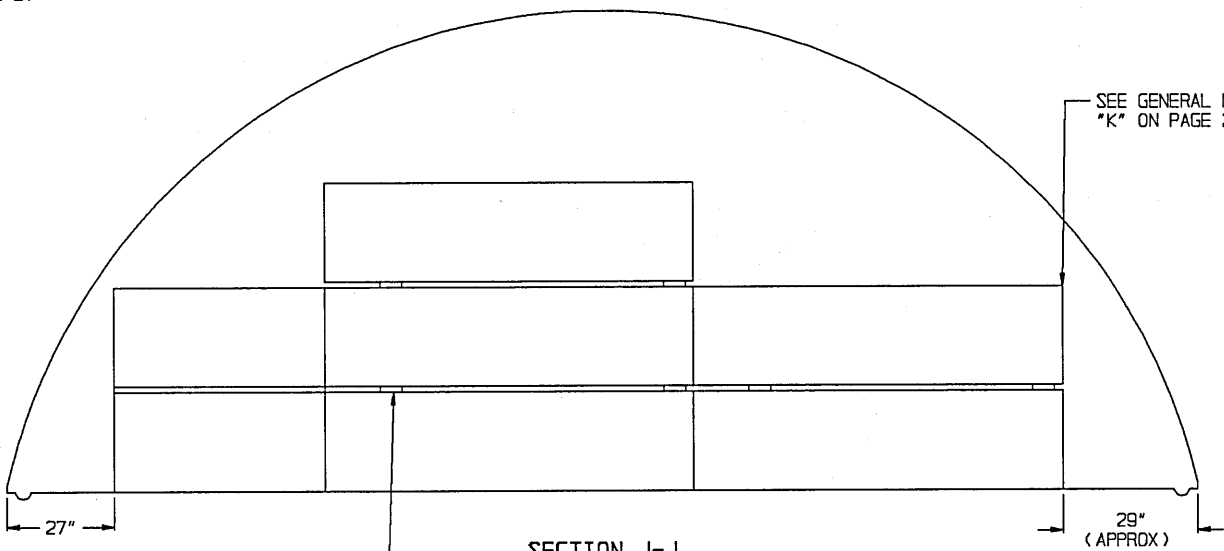
STORAGE IN 80'-0" MAGAZINE

(10'-0" HIGH)

ITEM	QUANTITY
CONTAINERS - - - - -	97



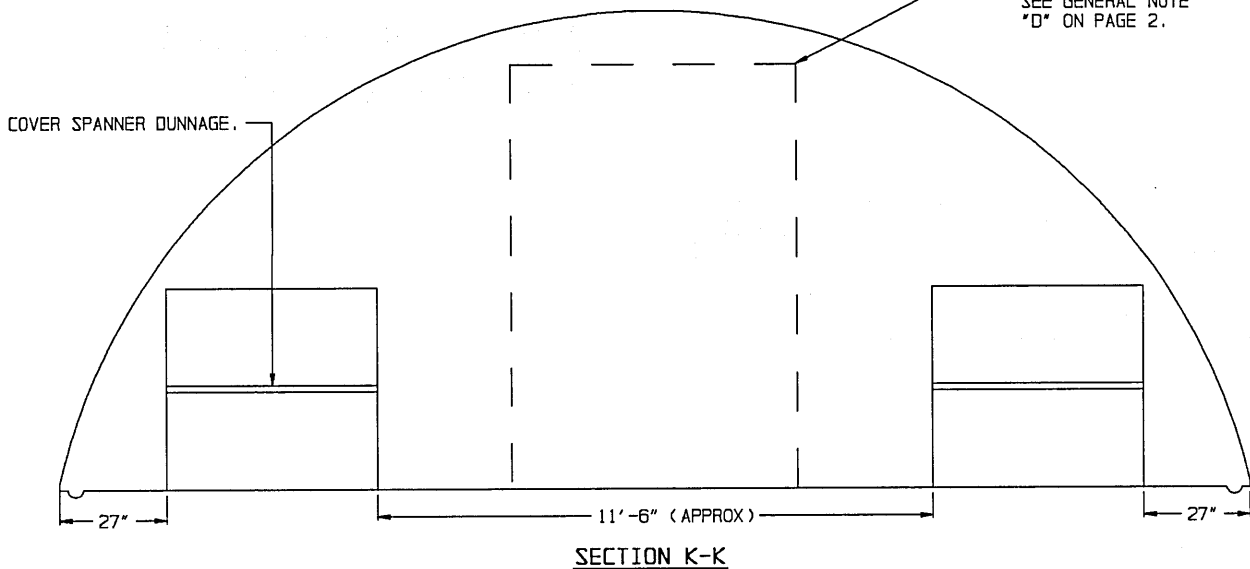
SEE GENERAL NOTE "J" ON PAGE 2.



SEE GENERAL NOTE "K" ON PAGE 2.

COVER SPANNER DUNNAGE
2" X 6" X 54" (2 REED
PER UPPER LAYER CON-
TAINER).

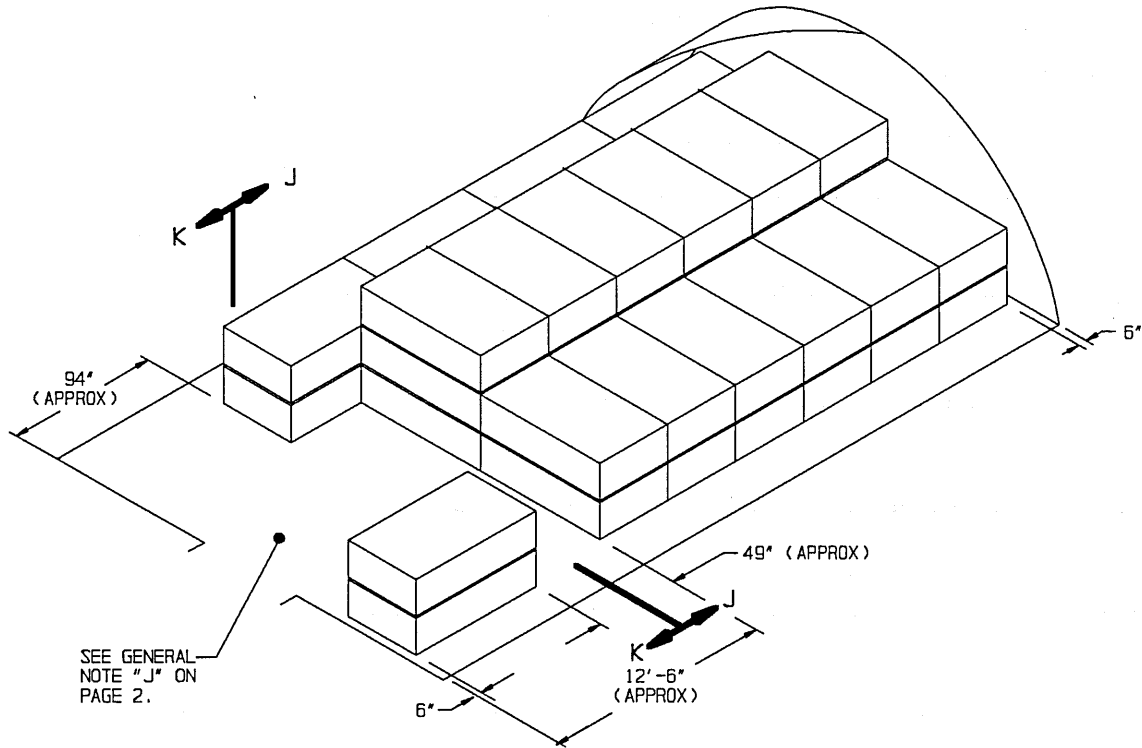
INDICATES OUTLINE
OF DOOR OPENING.
SEE GENERAL NOTE
"D" ON PAGE 2.



STORAGE IN 40'-0" MAGAZINE

(10'-0" HIGH)

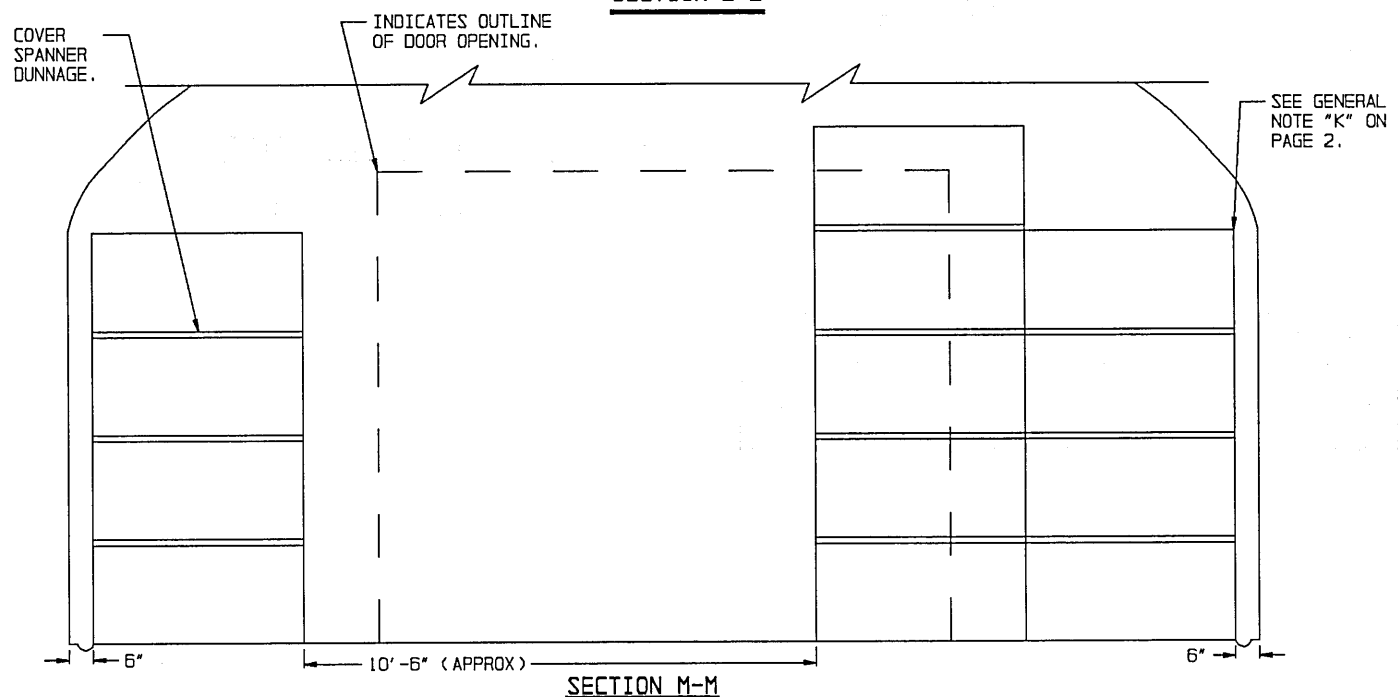
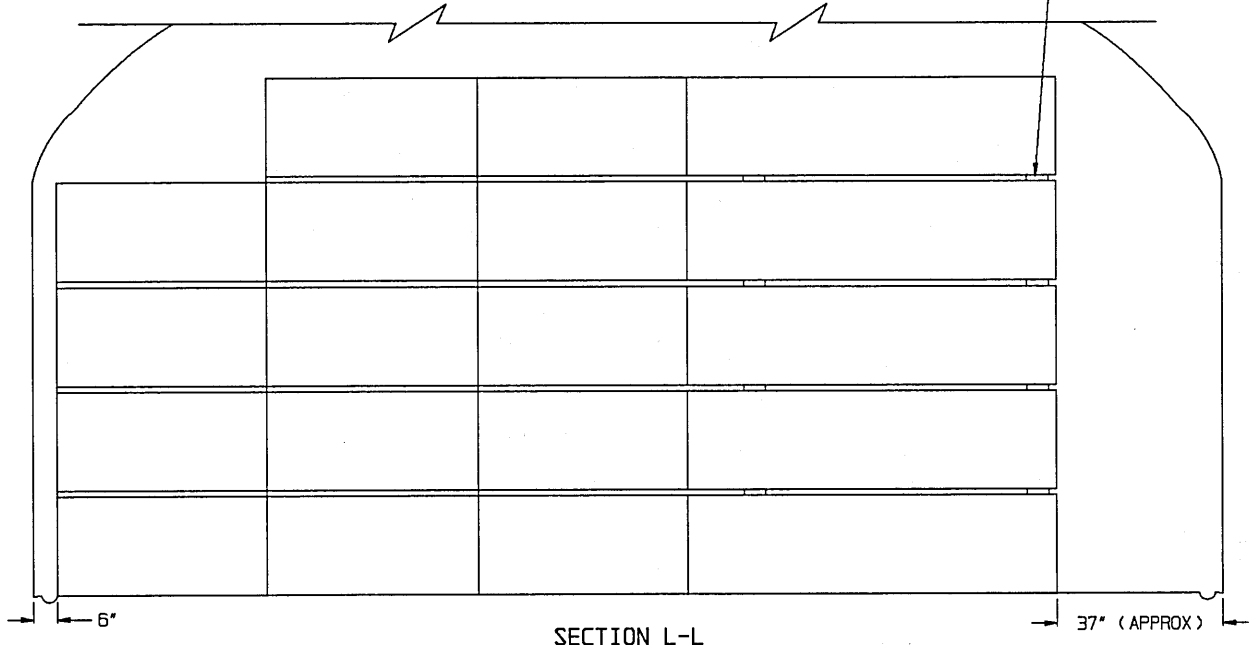
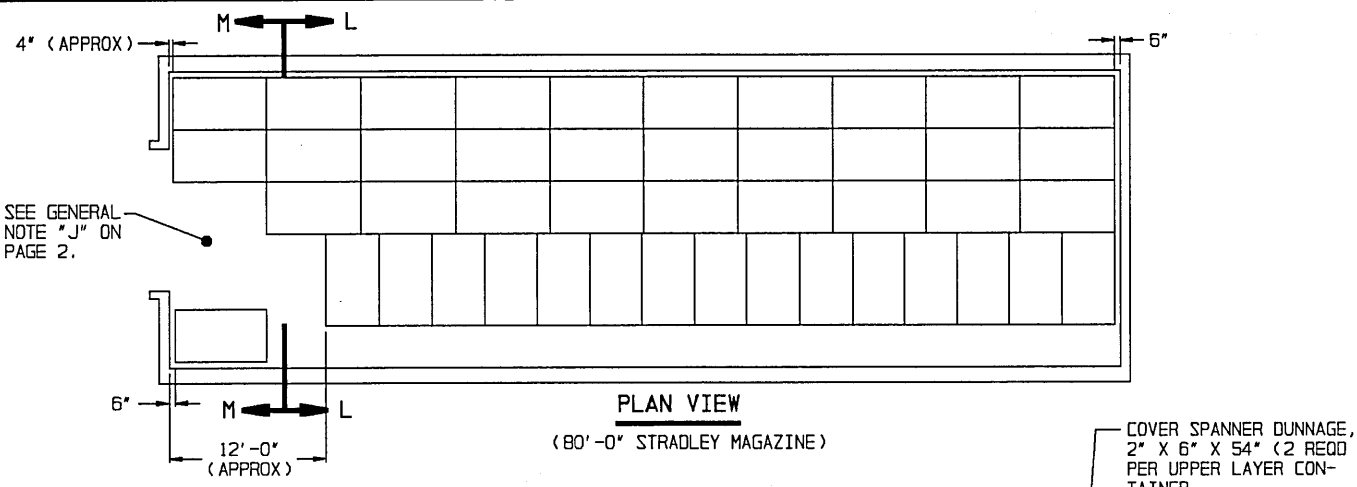
ITEM QUANTITY
CONTAINERS - - - - - 40



ISOMETRIC VIEW
(40'-0" MAGAZINE)

FOR "GENERAL NOTES" AND "MATERIAL SPECIFICATIONS", SEE PAGE 2.

BILL OF MATERIAL (PER UPPER LAYER CONTAINER)		
LUMBER	LINEAR FEET	BOARD FEET
2" X 6"	9	9



STORAGE PROCEDURES IN 80'-0" L X 25'-0" W X 14'-0" H STRADLEY AND 89'-0" L X 24'-10" W X 14"-4" H OVAL ARCH MAGAZINES

STORAGE IN 80'-0" STRADLEY MAGAZINE

(14'-0" HIGH)

ITEM QUANTITY

CONTAINERS - - - - - 214

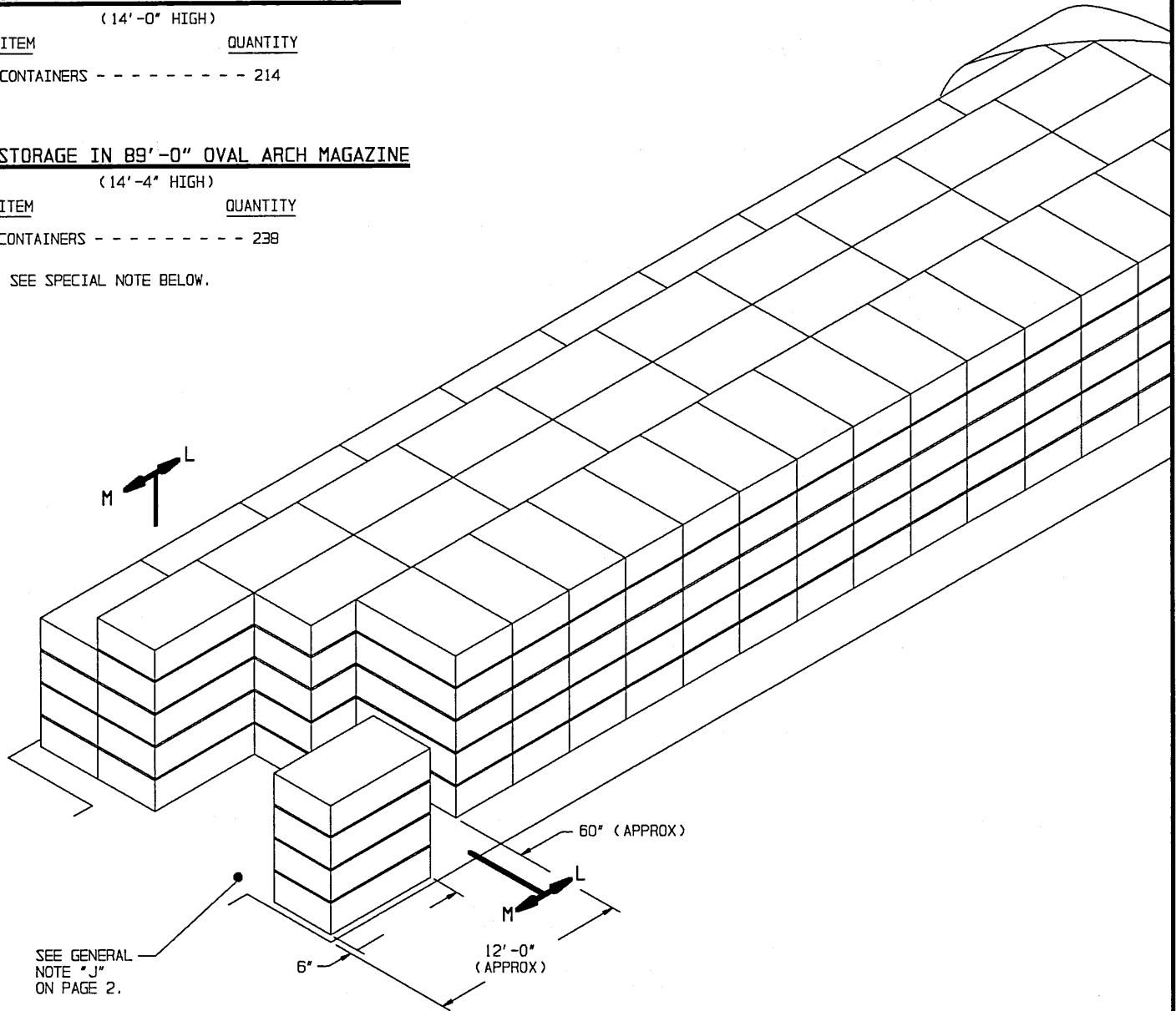
STORAGE IN 89'-0" OVAL ARCH MAGAZINE

(14'-4" HIGH)

ITEM QUANTITY

CONTAINERS - - - - - 238

SEE SPECIAL NOTE BELOW.



SEE GENERAL NOTE "J" ON PAGE 2.

ISOMETRIC VIEW
(STRADLEY MAGAZINE)

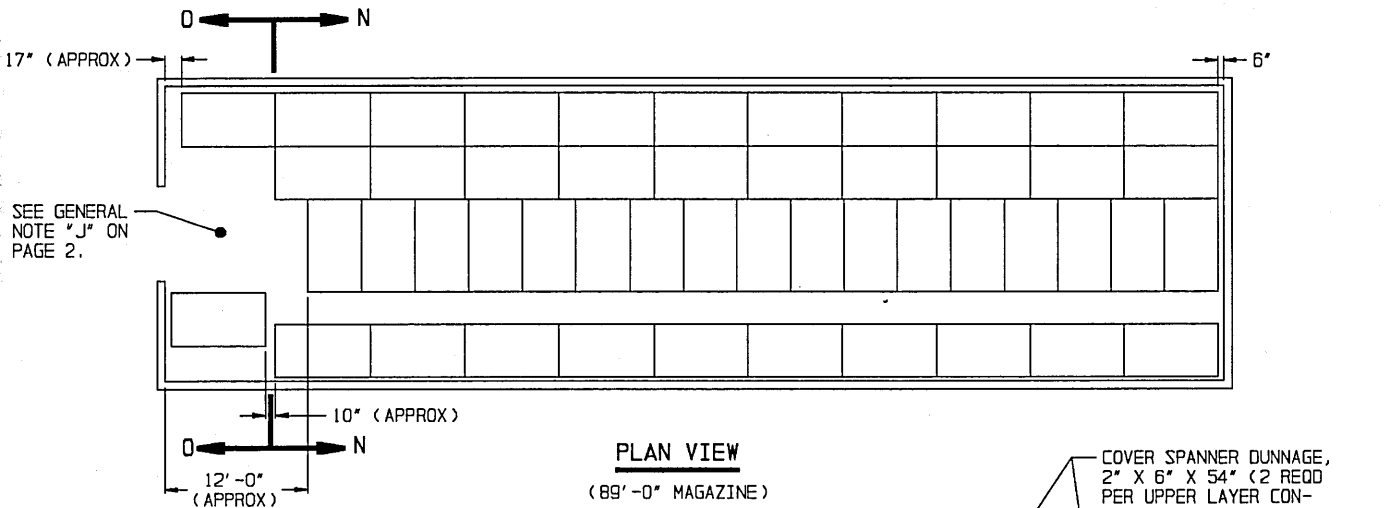
FOR "GENERAL NOTES" AND "MATERIAL SPECIFICATIONS", SEE PAGE 2.

BILL OF MATERIAL (PER UPPER LAYER CONTAINER)		
LUMBER	LINEAR FEET	BOARD FEET
2" X 6"	9	9

SPECIAL NOTE:

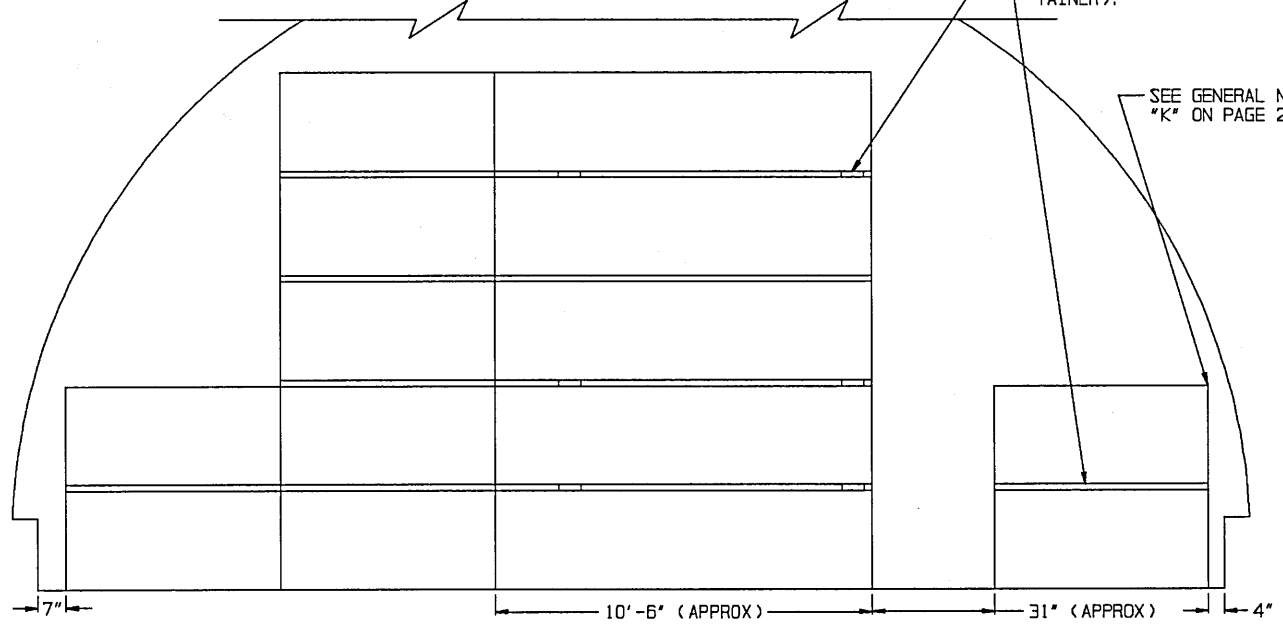
WHEN CONTAINERS ARE TO BE STORED IN AN 89'-0" LONG OVAL-ARCH MAGAZINE, ROW 1 WILL BE 11 CONTAINERS LONG WITH 4 LAYERS; ROW 2 WILL BE 11 CONTAINERS LONG WITH 5 LAYERS; ROW 3 WILL BE 10 CONTAINERS WITH 5 LAYERS; AND ROW 4 WILL BE 17 CONTAINERS DEEP WITH 5 LAYERS. IN THE FRONTAL AREA 4 ADDITIONAL CONTAINERS CAN BE STACKED AS SHOWN IN THE STORAGE VIEWS, MAKING A TOTAL OF 238 CONTAINERS.

STORAGE PROCEDURES IN 80'-0" L X 25'-0" W X 14'-0" H STRADLEY AND 89'-0" L X 24'-10" W X 14'-4" H OVAL ARCH MAGAZINES



COVER SPANNER DUNNAGE,
2" X 6" X 54" (2 REQD
PER UPPER LAYER CON-
TAINER).

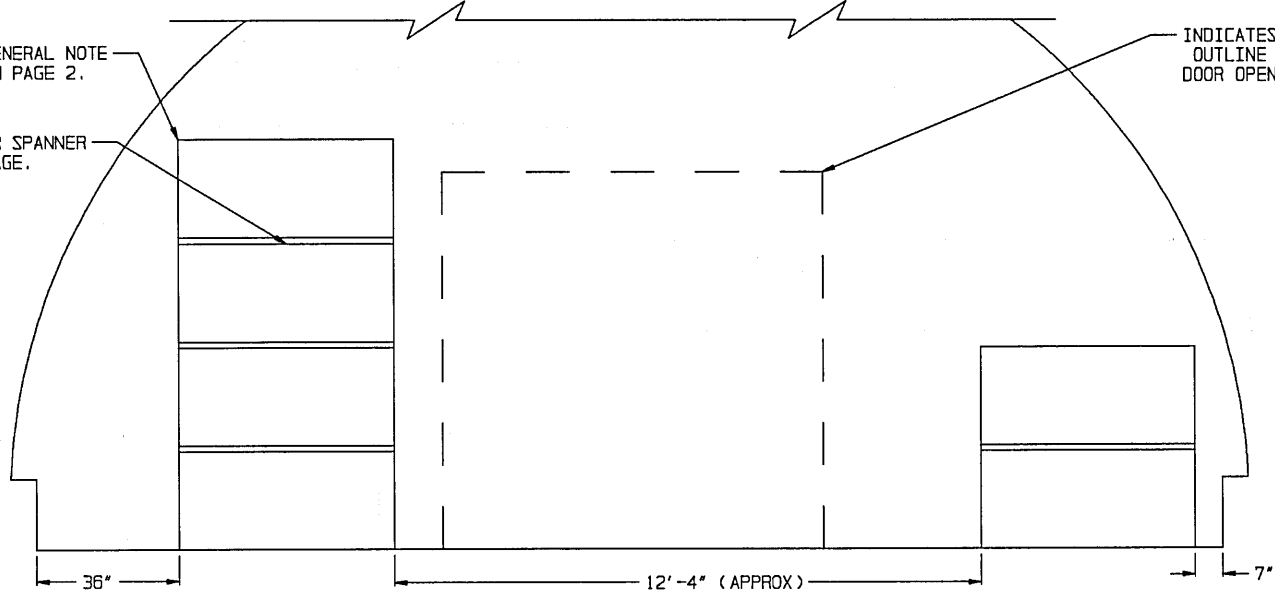
SEE GENERAL NOTE
"K" ON PAGE 2.



SEE GENERAL NOTE
"K" ON PAGE 2.

COVER SPANNER
DUNNAGE.

INDICATES
OUTLINE OF
DOOR OPENING

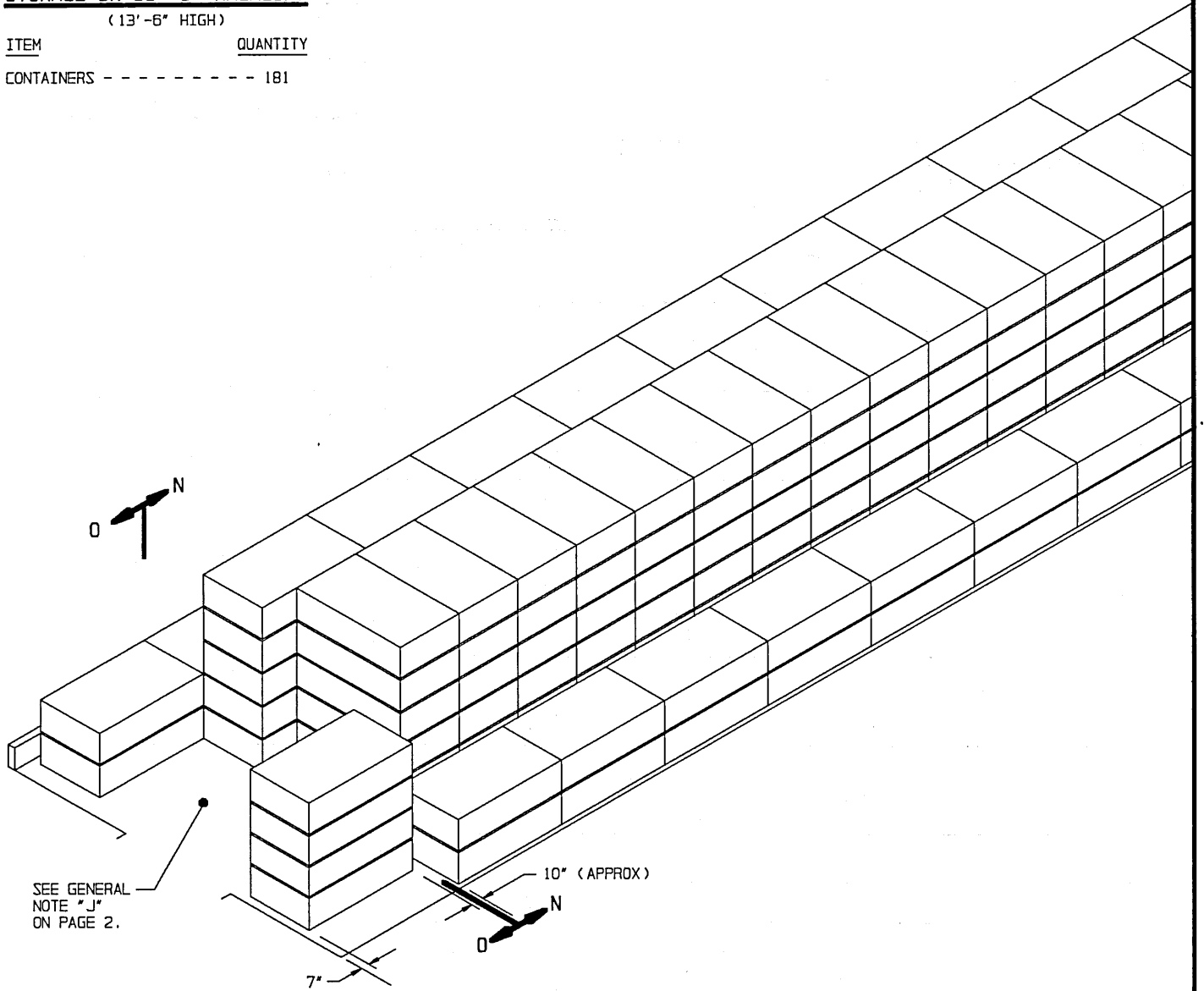


STORAGE IN 89'-0" MAGAZINE

(13'-6" HIGH)

ITEM QUANTITY

CONTAINERS - - - - - 181



ISOMETRIC VIEW
(89'-0" MAGAZINE)

FOR "GENERAL NOTES" AND "MATERIAL SPECIFICATIONS", SEE PAGE 2.

BILL OF MATERIAL (PER UPPER LAYER CONTAINER)		
LUMBER	LINEAR FEET	BOARD FEET
2" X 6"	9	9

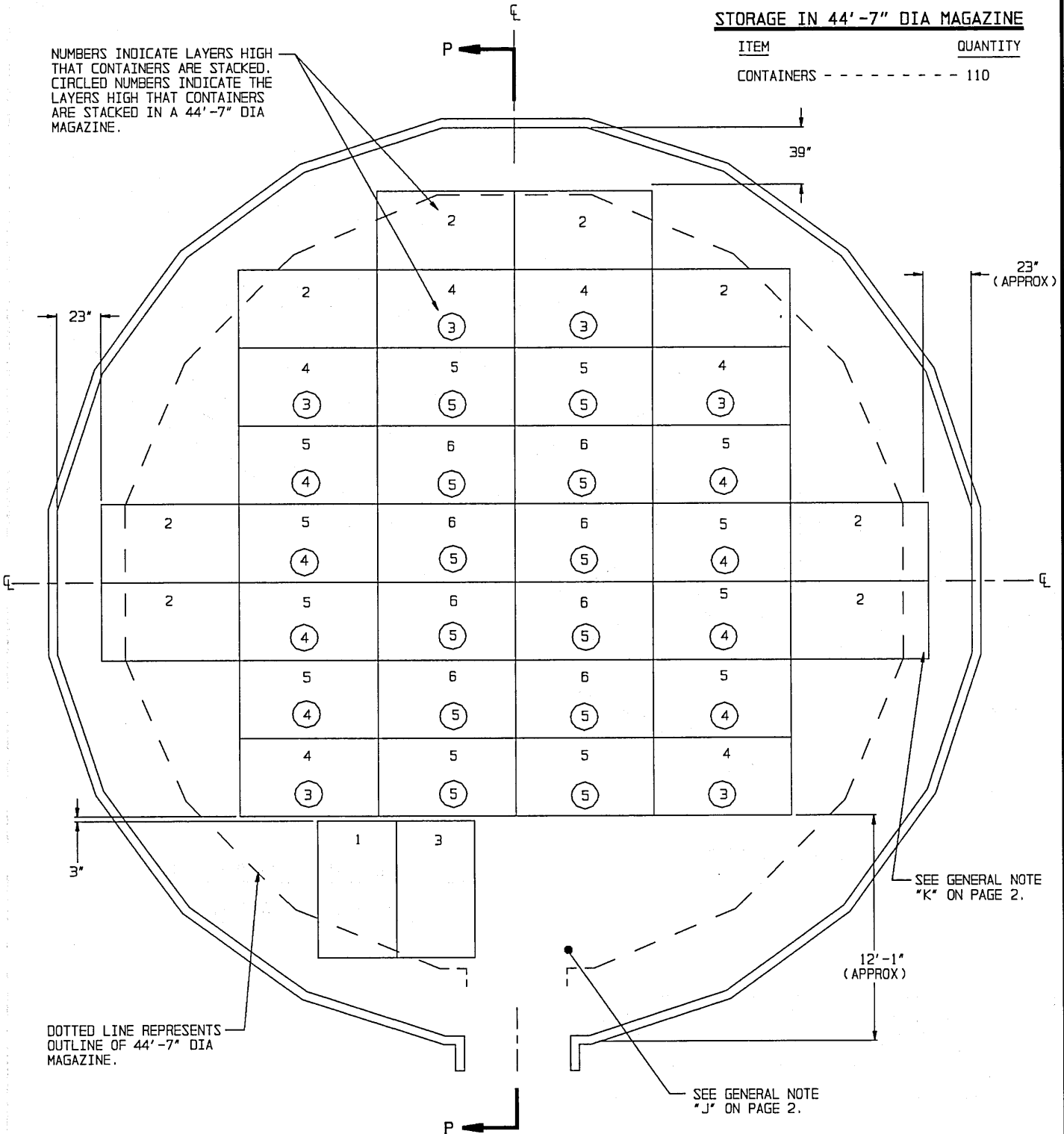
STORAGE IN 52'-0" DIA MAGAZINE

ITEM	QUANTITY
CONTAINERS	----- 152

STORAGE IN 44'-7" DIA MAGAZINE

ITEM	QUANTITY
CONTAINERS	----- 110

NUMBERS INDICATE LAYERS HIGH THAT CONTAINERS ARE STACKED. CIRCLED NUMBERS INDICATE THE LAYERS HIGH THAT CONTAINERS ARE STACKED IN A 44'-7" DIA MAGAZINE.



DOTTED LINE REPRESENTS OUTLINE OF 44'-7" DIA MAGAZINE.

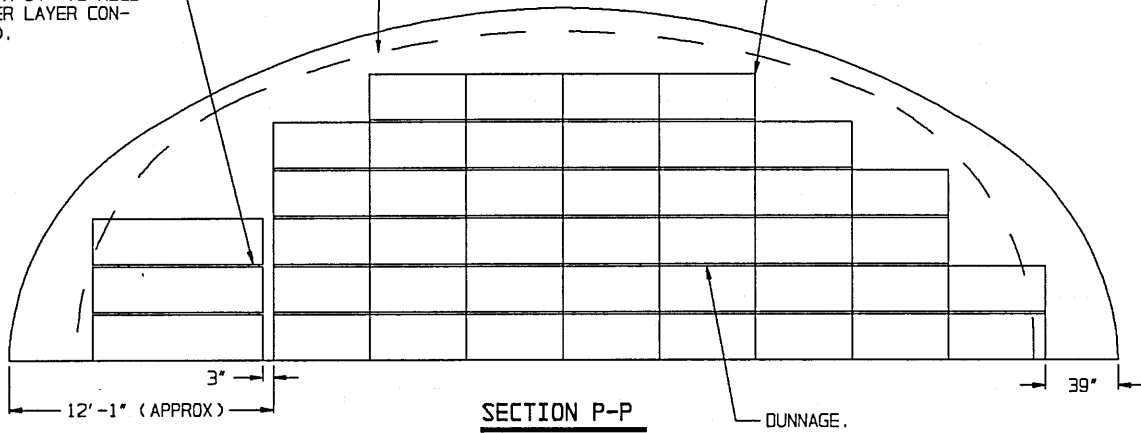
PLAN VIEW

(52'-0" AND 44'-7" DIA MAGAZINE)

COVER SPANNER DUNNAGE,
2" X 6" X 54" (2 REQ'D
PER UPPER LAYER CON-
TAINERS).

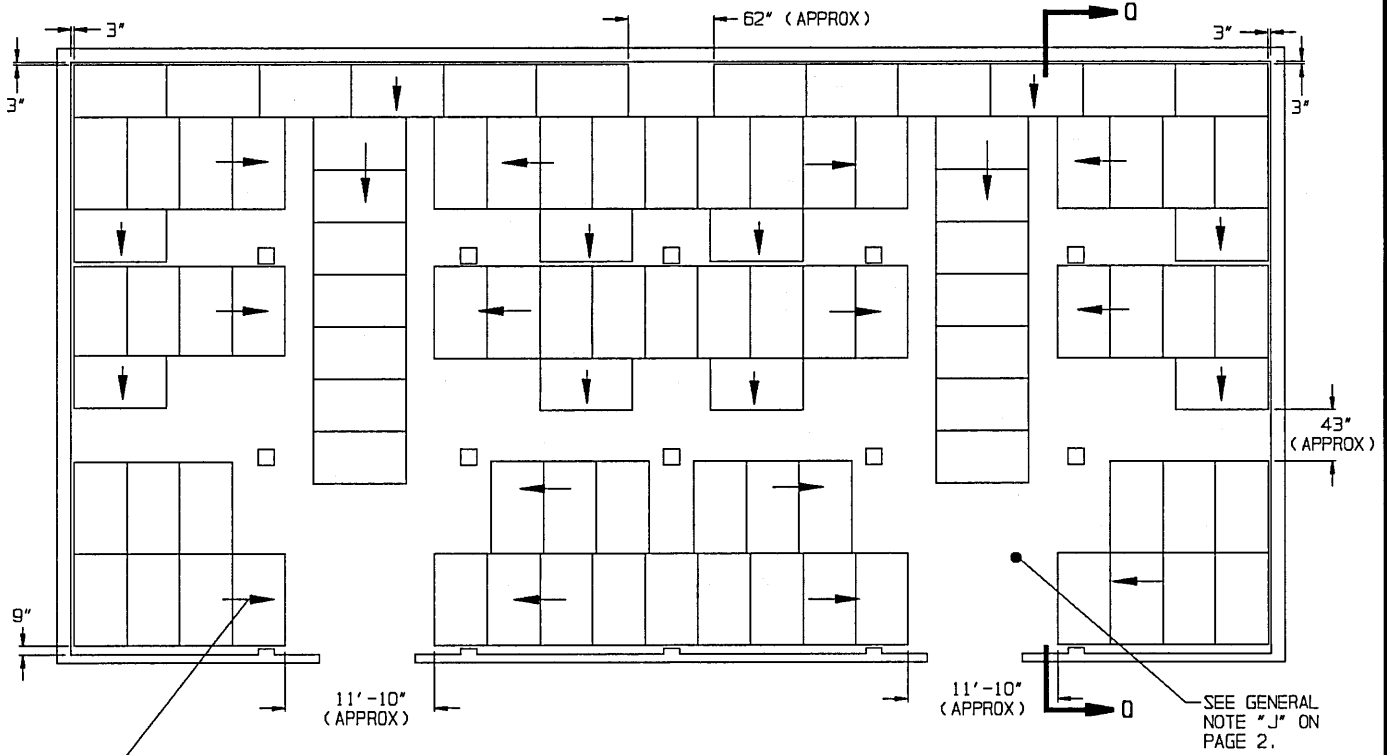
DOTTED LINE REPRESENTS
OUTLINE OF 44'-7" DIA
MAGAZINE.

SEE GENERAL NOTE "K" ON PAGE 2.



FOR "GENERAL NOTES" AND "MATERIAL
SPECIFICATIONS", SEE PAGE 2.

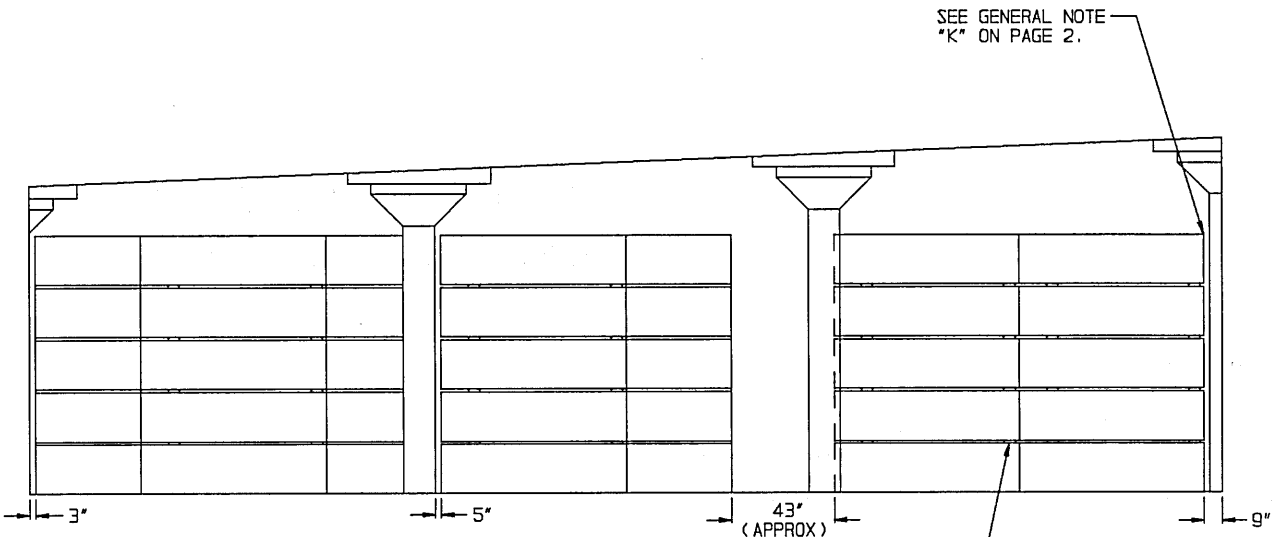
BILL OF MATERIAL (PER UPPER LAYER CONTAINER)		
LUMBER	LINEAR FEET	BOARD FEET
2" X 6"	9	9



ARROWS INDICATE DIRECTION OF STORAGE FROM WALLS OR FROM CENTER OF MAGAZINE.

PLAN VIEW

(100'-8" X 50'-0" MAGAZINE)



SECTION O-O

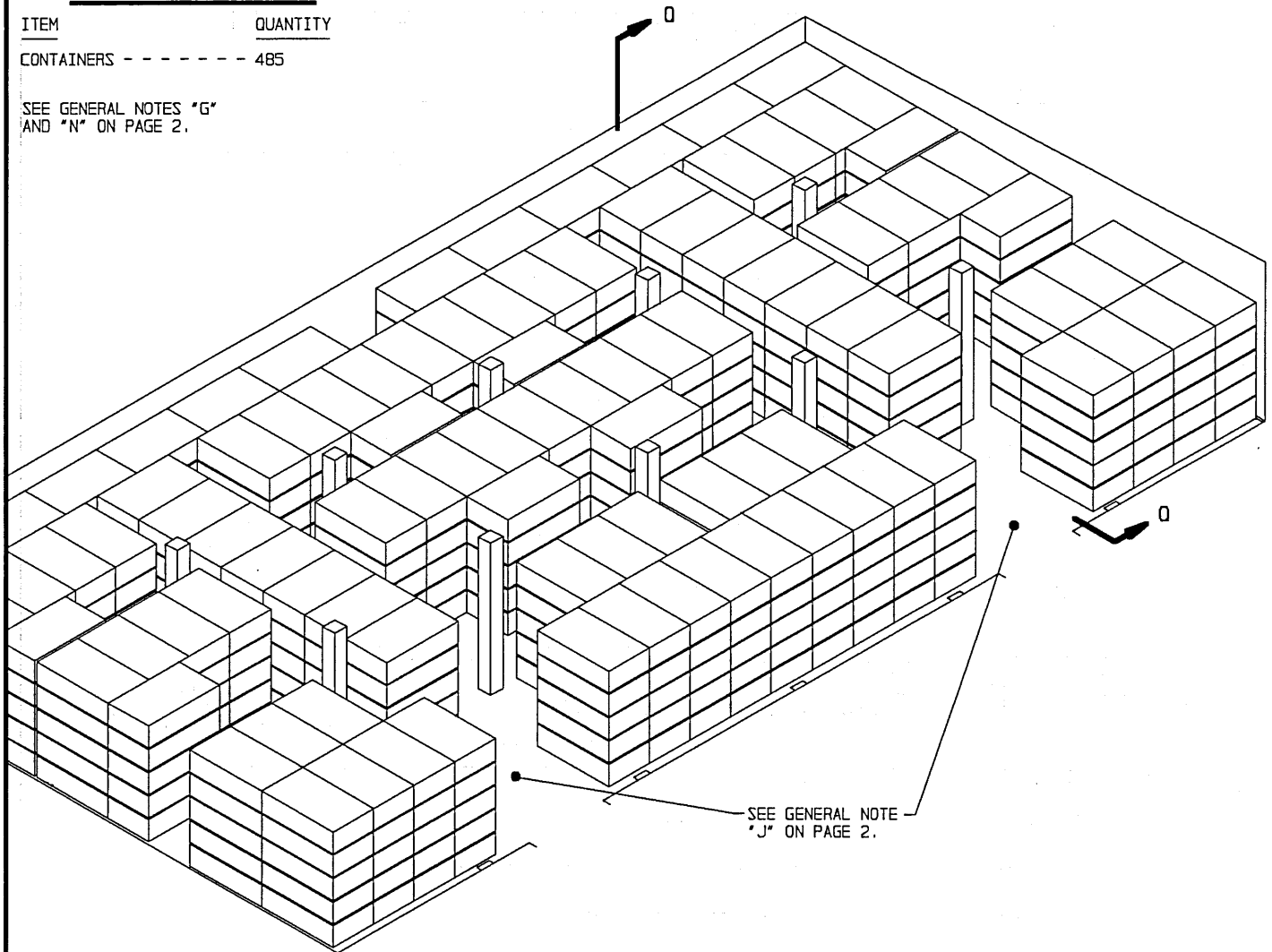
COVER SPANNER DUNNAGE, 2" X 6" X 54" (2 REQD PER UPPER LAYER CONTAINER).

STORAGE PROCEDURES IN 100'-8" L X 50'-0" W RECTANGULAR MAGAZINE

**STORAGE IN 100'-8" X 50'-0"
RECTANGULAR MAGAZINE**

ITEM QUANTITY
CONTAINERS - - - - - 485

SEE GENERAL NOTES "G"
AND "N" ON PAGE 2.



ISOMETRIC VIEW

(100'-8" X 50'-0" MAGAZINE)

FOR "GENERAL NOTES" AND "MATERIAL SPECIFICATIONS", SEE PAGE 2.

BILL OF MATERIAL (PER UPPER LAYER CONTAINER)

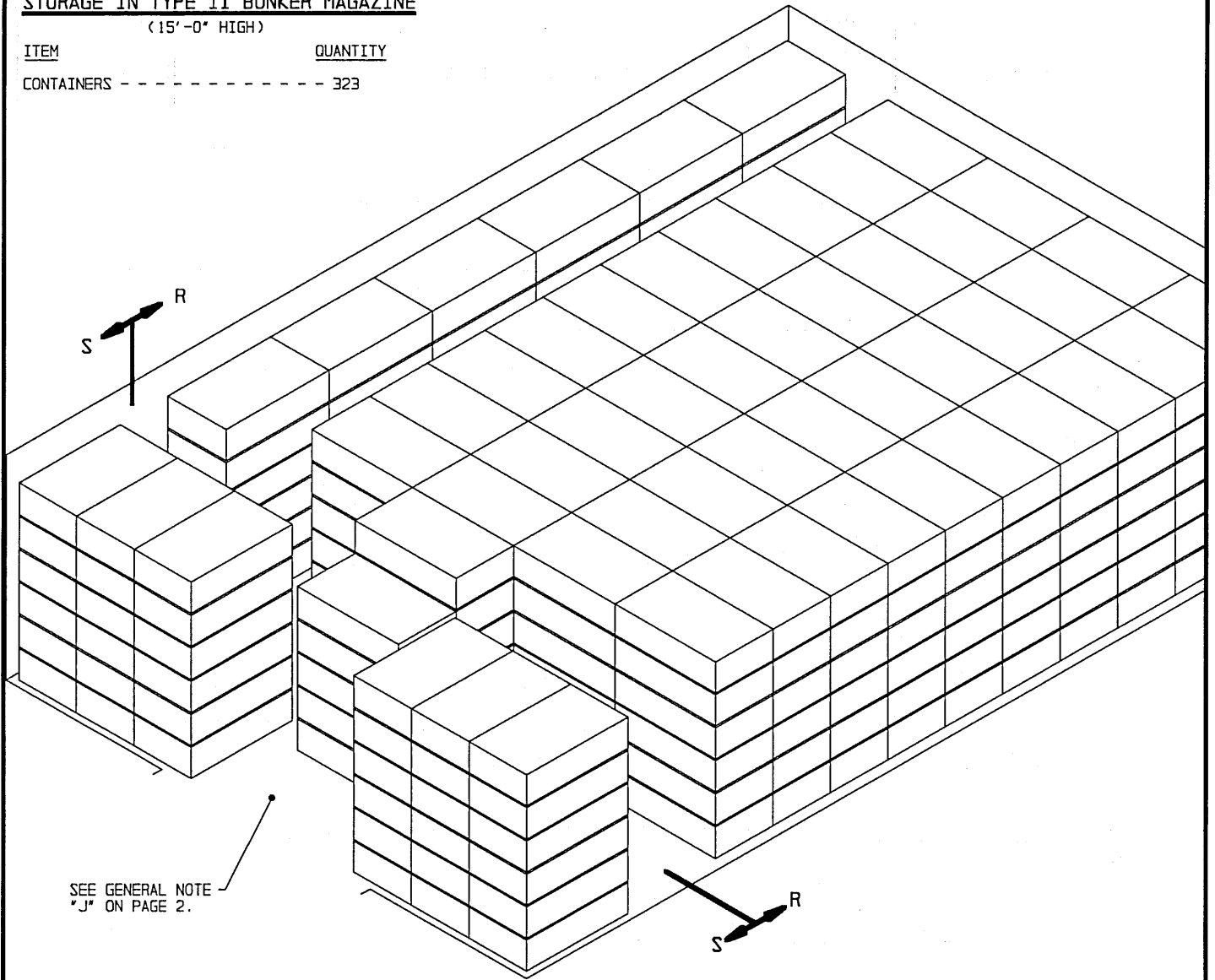
LUMBER	LINEAR FEET	BOARD FEET
2" X 6"	9	9

STORAGE IN TYPE II BUNKER MAGAZINE

(15'-0" HIGH)

ITEM QUANTITY

CONTAINERS - - - - - 323



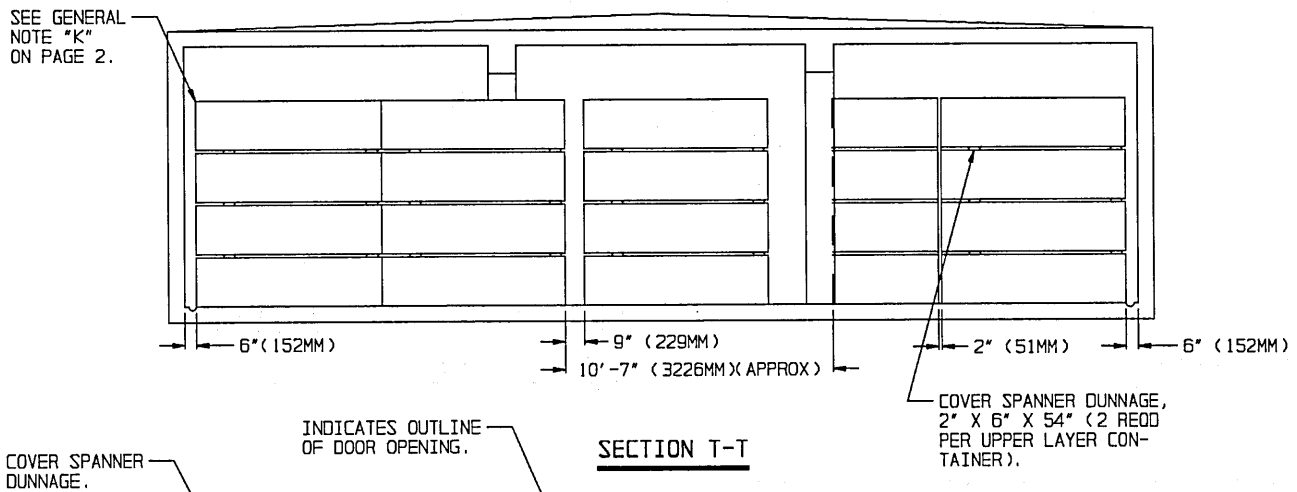
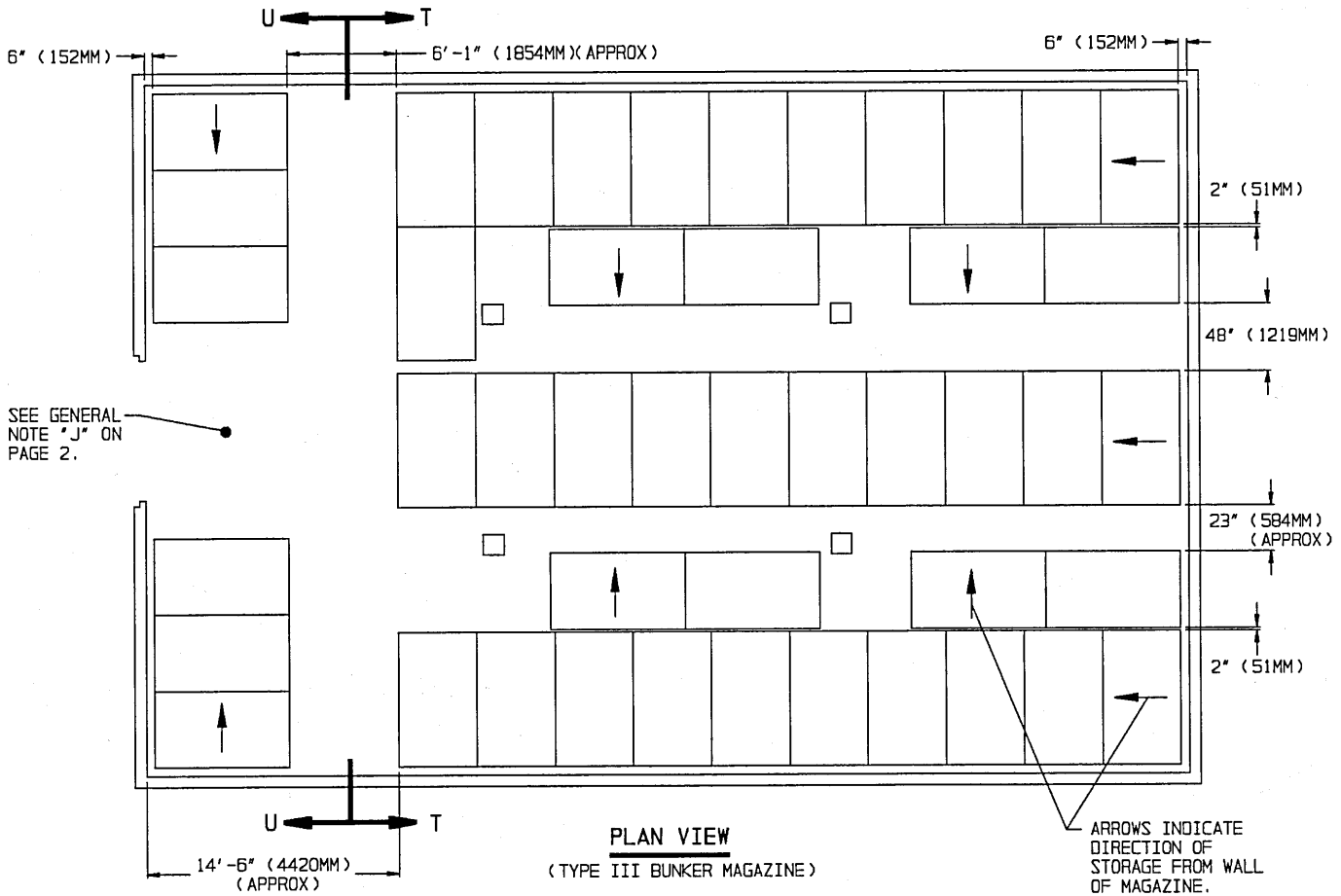
SEE GENERAL NOTE
J ON PAGE 2.

ISOMETRIC VIEW

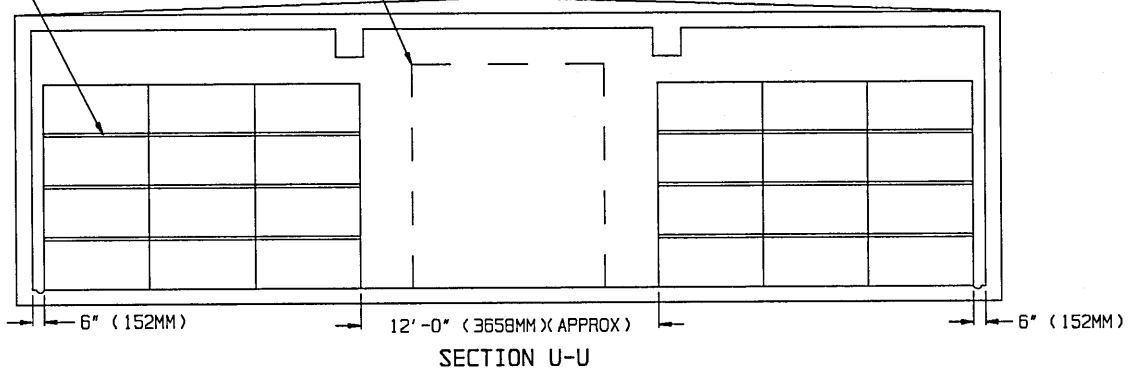
(TYPE II BUNKER MAGAZINE)

FOR "GENERAL NOTES" AND "MATERIAL SPECIFICATIONS", SEE PAGE 2.

BILL OF MATERIAL (PER UPPER LAYER CONTAINER)		
LUMBER	LINEAR FEET	BOARD FEET
2" X 6"	9	9



COVER SPANNER DUNNAGE.

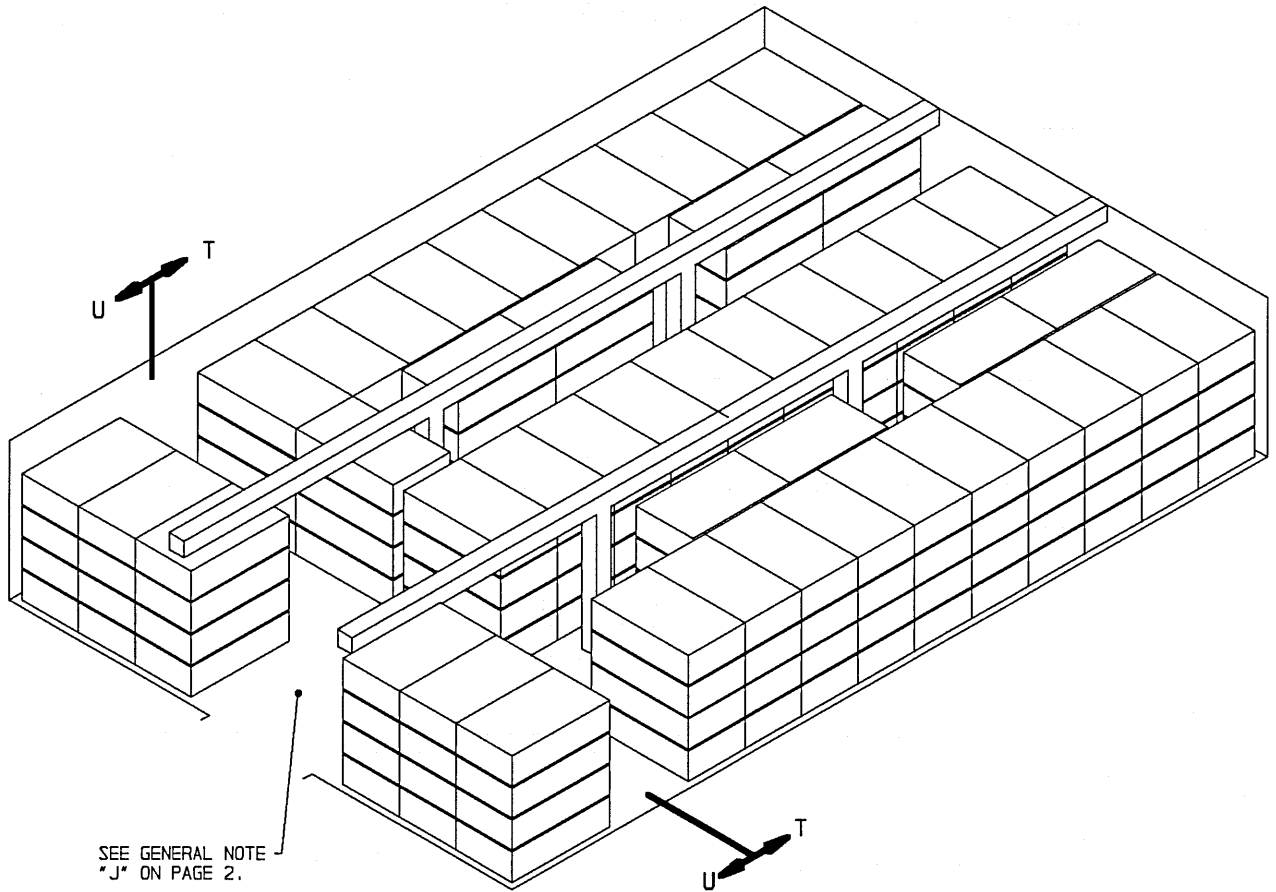


STORAGE PROCEDURES IN 60'-0" L X 40'-0" W X 11'-0" H TYPE III BUNKER MAGAZINE

STORAGE IN TYPE III BUNKER MAGAZINE

(11'-0" HIGH)

ITEM	QUANTITY
CONTAINERS - - - - -	180



SEE GENERAL NOTE
"J" ON PAGE 2.

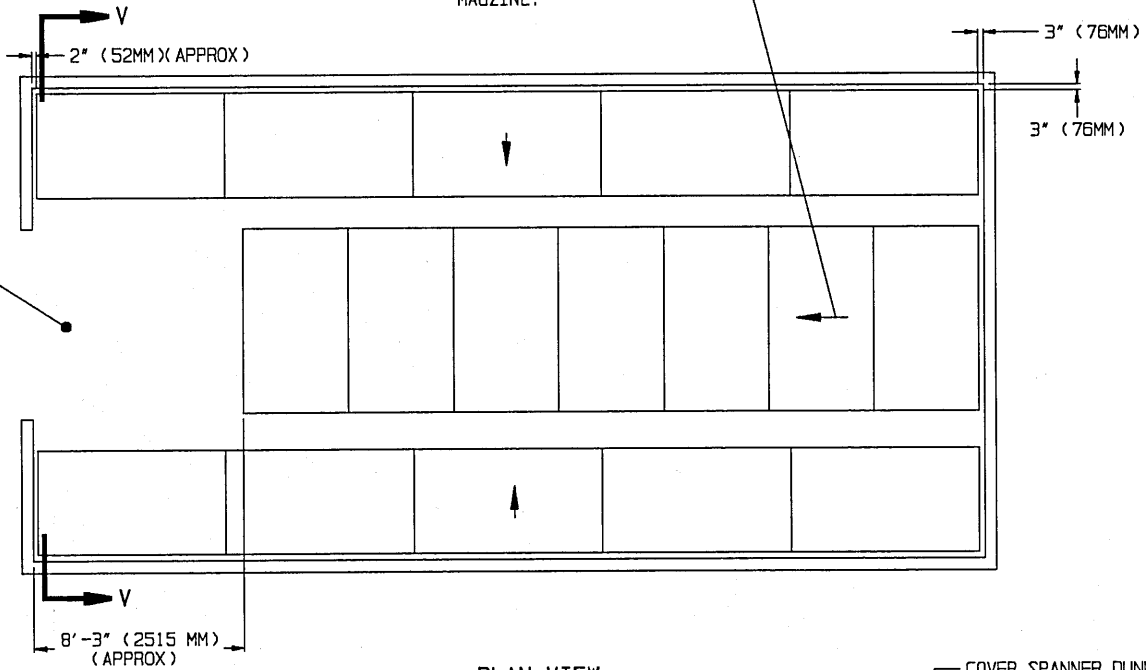
ISOMETRIC VIEW

(TYPE III BUNKER MAGAZINE)

FOR "GENERAL NOTES" AND "MATERIAL SPECIFICATIONS", SEE PAGE 2.

BILL OF MATERIAL (PER UPPER LAYER CONTAINER)		
LUMBER	LINEAR FEET	BOARD FEET
2" X 6"	9	9

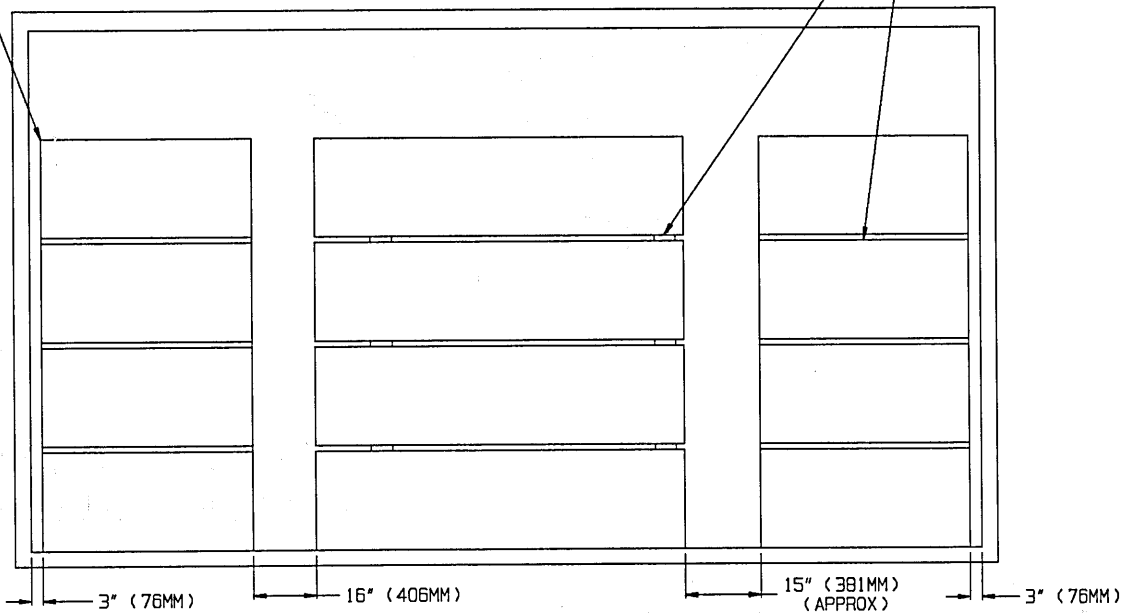
ARROWS INDICATE DIRECTION OF STORAGE FROM WALL OF MAGZINE.



PLAN VIEW
(TYPE IV BUNKER MAGAZINE)

COVER SPANNER DUNNAGE,
2" X 6" X 54" (2 REQD
PER UPPER LAYER CON-
TAINER).

SEE GENERAL
NOTE "K"
ON PAGE 2.



SECTION V-V

STORAGE PROCEDURES IN 40'-0" L X 20'-0" W X 11'-0" H TYPE IV BUNKER MAGAZINE

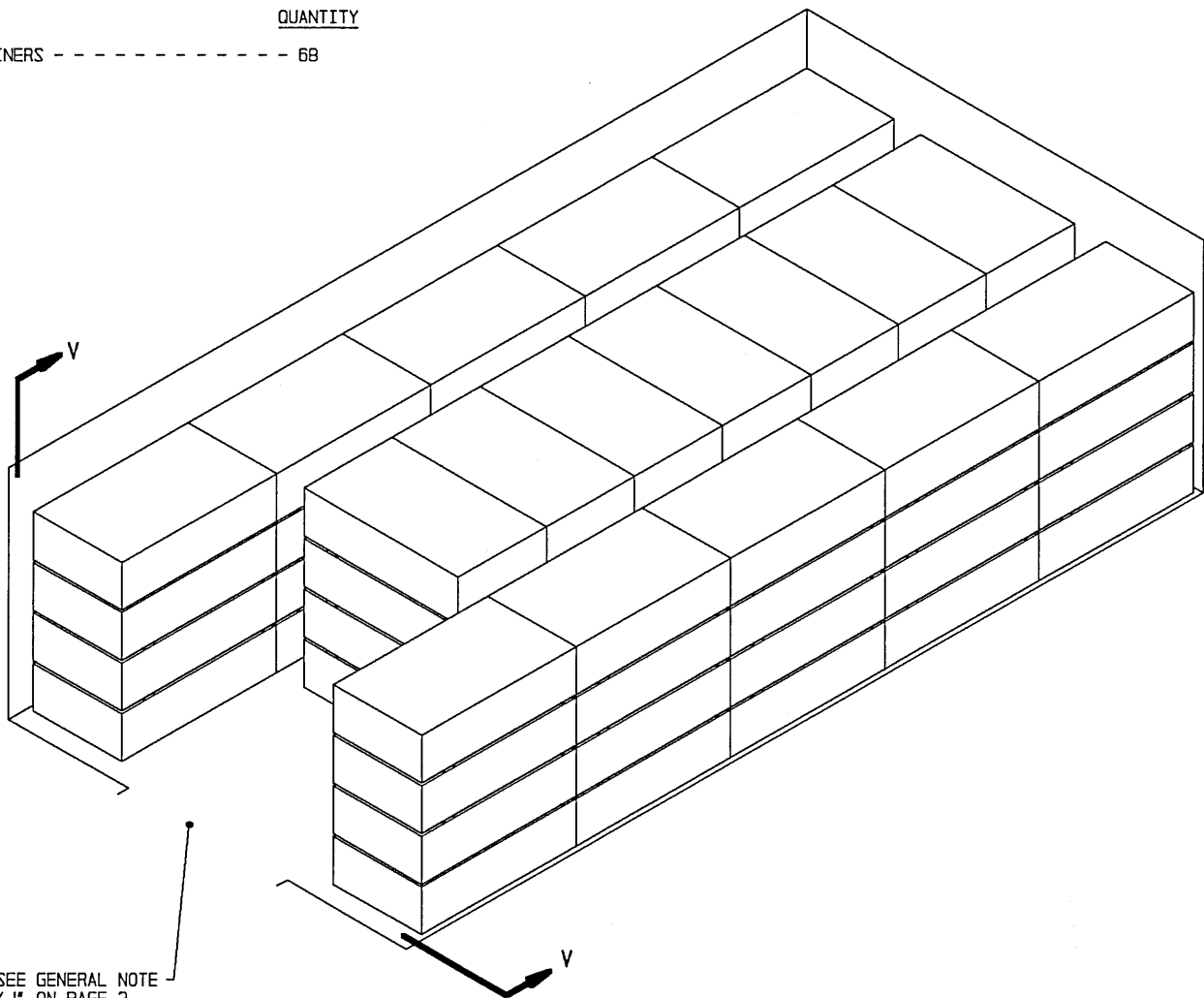
STORAGE IN TYPE IV BUNKER MAGAZINE

(11'-0" HIGH)

ITEM

QUANTITY

CONTAINERS - - - - - 68



SEE GENERAL NOTE "J" ON PAGE 2.

ISOMETRIC VIEW
(TYPE IV BUNKER MAGAZINE)

FOR "GENERAL NOTES" AND "MATERIAL SPECIFICATIONS", SEE PAGE 2.

BILL OF MATERIAL (PER UPPER LAYER CONTAINER)		
LUMBER	LINEAR FEET	BOARD FEET
2" X 6"	9	9

