

GENERAL NOTES

- A. THIS DOCUMENT HAS BEEN PREPARED AND ISSUED IN ACCORDANCE WITH AR 740-1 AND AUGMENTS TM 743-200-1 (CHAPTER 5).
- B. THE OUTLOADING PROCEDURES SPECIFIED HEREIN ARE APPLICABLE TO MEDIUM CALIBER PROJECTILES AND PROJECTILE METAL PARTS, FROM 2.75 INCH THRU 165 MM, WHEN PALLETIZED. SUBSEQUENT REFERENCE TO UNIT HEREIN MEANS THE PALLET UNIT WITH CONTENTS.
- C. THE LOADS AS SHOWN ARE BASED UPON TRAILERS WHICH ARE 40'-0" LONG BY 7'-8" WIDE (INSIDE DIMENSION), UNLESS OTHERWISE SPECIFIED. THE TRAILERS, ADDITIONALLY, MUST BE OF THE TYPE SPECIFICALLY DESIGNED FOR TRAILER-ON-FLAT-CAR (TOFC) RAIL CARRIER SERVICE. I.E., THE TRAILER CONSTRUCTION MUST BE SUCH THAT THE FORWARD END WALL IS CAPABLE OF RESTRAINING A FULL LOAD DURING NORMAL TOFC TRANSPORTATION AND HANDLING. THE TRAILERS MUST ALSO HAVE WOOD OR WOOD AND METAL FLOORS WHICH WILL ALLOW FOR PROPER INSTALLATION AND PLACEMENT OF THE PALLA-GARD LOAD RESTRAINING DEVICES. FOR TOFC SHIPMENTS, ONLY RAILCARS WHICH ARE SPECIFIED BY BUREAU OF EXPLOSIVES PAMPHLET 6C, WILL BE UTILIZED.
- D. FOR DETAILS OF THE BOXED-TYPE PALLET UNIT, SEE ORDNANCE CORPS DRAWING NO. F-7548604 AND THE PICTORIAL VIEW ON PAGE 3.
- E. FOR DETAILS OF THE "OPEN-TYPE" PALLET UNIT, SEE PICATINNY ARSENAL DRAWING NO. F-8837835 AND THE PICTORIAL VIEW ON PAGE 3.
- F. SELECTION OF A VEHICLE TO BE USED FOR TRANSPORTING THE DESIGNATED ITEM MUST COMPLY WITH AR 55-355, CHAPTER 213, FOR EXPLOSIVES AND OTHER DANGEROUS ARTICLES, IN FULL.
- G. THE GROSS WEIGHT AND AXLE DISTRIBUTION OF WEIGHT FOR A LOAD WILL BE THE RESPONSIBILITY OF THE CARRIER. THE CARRIER WILL ADVISE THE SHIPPER OF THE APPLICABLE LOADING REQUIREMENTS, AND THE SHIPPER WILL LOAD ACCORDINGLY. NOTICE: A LOAD WILL BE POSITIONED IN A TRAILER CONSISTENT WITH THE WEIGHT LAWS OF THE STATE OR STATES THROUGH WHICH THE TRAILER WILL BE TRANSPORTED BY HIGHWAY (MOTOR CARRIER).
- H. THE NUMBER OF LADING UNITS MAY BE ADJUSTED TO FIT THE SIZE OF THE TRAILER TO BE LOADED OR THE QUANTITY TO BE SHIPPED; HOWEVER, THE APPROVED METHODS SHOWN HEREIN MUST BE FOLLOWED AS CLOSELY AS POSSIBLE FOR THE BLOCKING AND BRACING OF THE DESIGNATED ITEM.
- J. OTHER TYPES OF LADING ITEMS MAY BE LOADED INTO TRAILERS WHICH ARE PARTIALLY LOADED WITH THE DEPICTED ITEM, PROVIDING THE TOTAL LOAD IS COMPATIBLE, EXISTING DIRECTIVES ARE NOT VIOLATED, AND THE OTHER LADING ITEMS ARE BLOCKED AND BRACED TO EQUAL THE BLOCKING AND BRACING CRITERIA SPECIFIED HEREIN.
- K. DUNNAGE LUMBER SPECIFIED IS OF A NOMINAL SIZE. FOR EXAMPLE, 2" X 4" MATERIAL IS ACTUALLY 1-1/2" THICK BY 3-1/2" WIDE AND 2" X 6" MATERIAL IS ACTUALLY 1-1/2" THICK BY 5-1/2" WIDE.
- L. CAUTION: DO NOT NAIL DUNNAGE MATERIAL TO THE TRAILER WALLS OR FLOOR. ALL NAILING WILL BE WITHIN THE DUNNAGE.
- M. PORTIONS OF THE TRAILERS DEPICTED WITHIN THIS DRAWING, SUCH AS ONE OF THE SIDE WALLS, HAVE NOT BEEN SHOWN IN THE LOAD VIEWS FOR CLARITY PURPOSES.
- N. A STAGGERED NAILING PATTERN WILL BE USED WHEREVER POSSIBLE WHEN NAILS ARE DRIVEN INTO JOINTS OF DUNNAGE ASSEMBLIES. OR WHEN LAMINATING DUNNAGE. ADDITIONALLY, THE NAILING PATTERN FOR AN UPPER PIECE OF LAMINATED DUNNAGE WILL BE ADJUSTED AS REQUIRED SO THAT A NAIL FOR THAT PIECE WILL NOT BE DRIVEN THROUGH ONTO OR RIGHT BESIDE A NAIL IN A LOWER PIECE.
- O. REQUIREMENTS CITED WITHIN THE BUREAU OF EXPLOSIVES PAMPHLET 6C APPLY WHEN THE SHIPMENT MOVES BY TOFC. SPECIAL TOFC NOTE FOLLOWS.

THE LOAD LIMIT OF A TOFC RAIL MUST NOT BE EXCEEDED, NOR WILL A CAR BE LOADED SO THAT THE TRUCK UNDER ONE END OF THE CAR CARRIES MORE THAN ONE-HALF OF THE LOAD LIMIT FOR THAT CAR.

- P. CONVERSION TO METRIC EQUIVALENTS: DIMENSIONS WITHIN THIS DOCUMENT ARE EXPRESSED IN INCHES AND WEIGHTS ARE EXPRESSED IN POUNDS. WHEN NECESSARY, THE METRIC EQUIVALENTS MAY BE COMPUTED ON THE BASIS OF ONE INCH EQUALS 25.4MM AND ONE POUND EQUALS 0.454 KG.
- Q. WHEN ANY STRAP IS SEALED AT AN END-OVER-END LAP JOINT, ONE SEAL, CRIMPED WITH TWO PAIR OF NOTCHES, WILL BE USED TO SEAL THE JOINT.

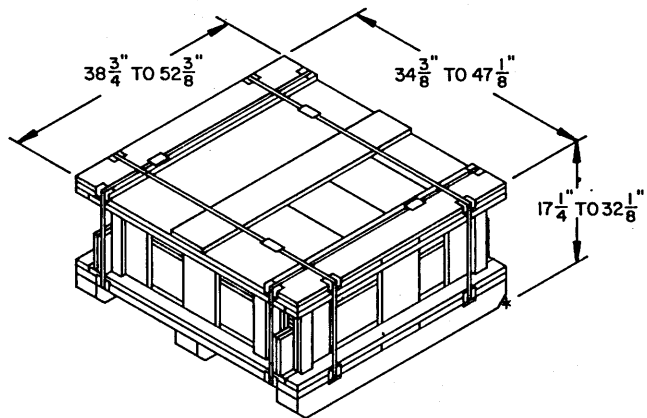
(CONTINUED AT RIGHT)

MATERIAL SPECIFICATIONS

- LUMBER —————: TM 743-200-1 (DUNNAGE LUMBER) AND FED SPEC MM-L-751.
- PLYWOOD —————: FED SPEC NN-P-530; GROUP B, CONSTRUCTION AND INDUSTRIAL PLYWOOD, INTERIOR WITH EXTERIOR GLUE, GRADE C-D. IF SPECIFIED GRADE IS NOT AVAILABLE, A BETTER INTERIOR OR AN EXTERIOR GRADE MAY BE SUBSTITUTED.
- NAILS —————: FED SPEC FF-N-105; COMMON.
- STRAPPING, STEEL ———: FED SPEC QQ-S-781; CLASS 1, TYPE I OR IV, HEAVY DUTY, FINISH A, B (GRADE 2), OR C.
- SEAL, STRAP —————: FED SPEC QQ-S-781; TYPE D, STYLE I, II, OR IV, CLASS H, FINISH A, B (GRADE 2), OR C.

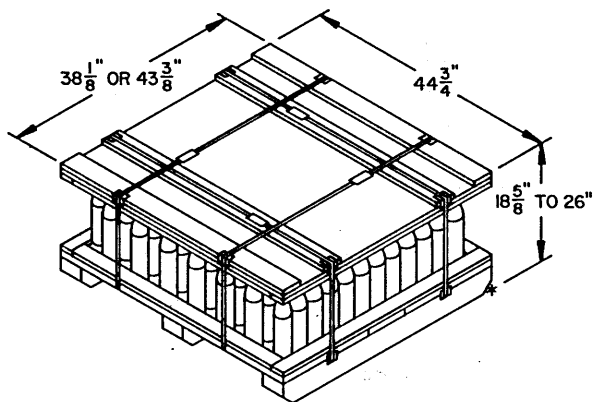
(GENERAL NOTES CONTINUED)

- R. FOR ADDITIONAL GUIDANCE, ATTENTION IS DIRECTED TO THE "SPECIAL NOTES" SECTIONS WHICH ARE ADJACENT TO THE DEPICTED OUTLOADING METHODS.
- S. POWER DRIVEN STAPLES MAY BE USED AS ALTERNATIVE FASTENERS FOR NAILS. WHEN CONSTRUCTING DUNNAGE WHICH ARE TO BE USED IN THE DELINEATED TRAILER LOADS SHOWN THROUGHOUT THIS DRAWING, THE STAPLES TO BE USED MUST BE EQUAL IN LENGTH TO THE SPECIFIED NAIL SIZE AND MUST BE SUBSTITUTED ON A ONE STAPLE FOR ONE NAIL BASIS. STAPLES WHICH ARE 2-1/2" OR LESS IN LENGTH SHOULD BE IN ACCORDANCE WITH FEDERAL SPECIFICATION FF-N-105 AS NEARLY AS PRACTICABLE. STAPLES WHICH ARE LONGER THAN 2-1/2" WILL BE A COMMERCIAL GRADE, OF A QUALITY EQUIVALENT TO THOSE MANUFACTURED BY SENCO PRODUCTS INCORPORATED.
- T. TRAILERS HAVING WIDTH AND LENGTH DIMENSIONS DIFFERENT THAN THOSE SPECIFIED WITHIN THIS DOCUMENT MAY BE USED FOR SHIPMENT OF THE DEPICTED PALLET UNITS PROVIDED THAT THE TRAILERS CONFORM TO THE GUIDANCE CONTAINED IN GENERAL NOTE "C" AT LEFT. WHEN USING TRAILERS OF A LENGTH DIFFERENT THAN THOSE DEPICTED IN THE LOAD VIEWS, CARE MUST BE TAKEN TO INSURE THAT THERE IS AT LEAST A 12" VOID FROM THE REAR OF THE PALLA-GARD UNITS TO THE METAL THRESHOLD OF THE TRAILER. THIS 12" VOID WILL PERMIT PROPER ENGAGEMENT OF THE PALLA-GARD DEVICES INTO THE WOOD FLOOR OF THE TOFC TRAILER WHEN THE LOAD INCURS FORCES INCIDENT TO NORMAL TRANSPORTATION.



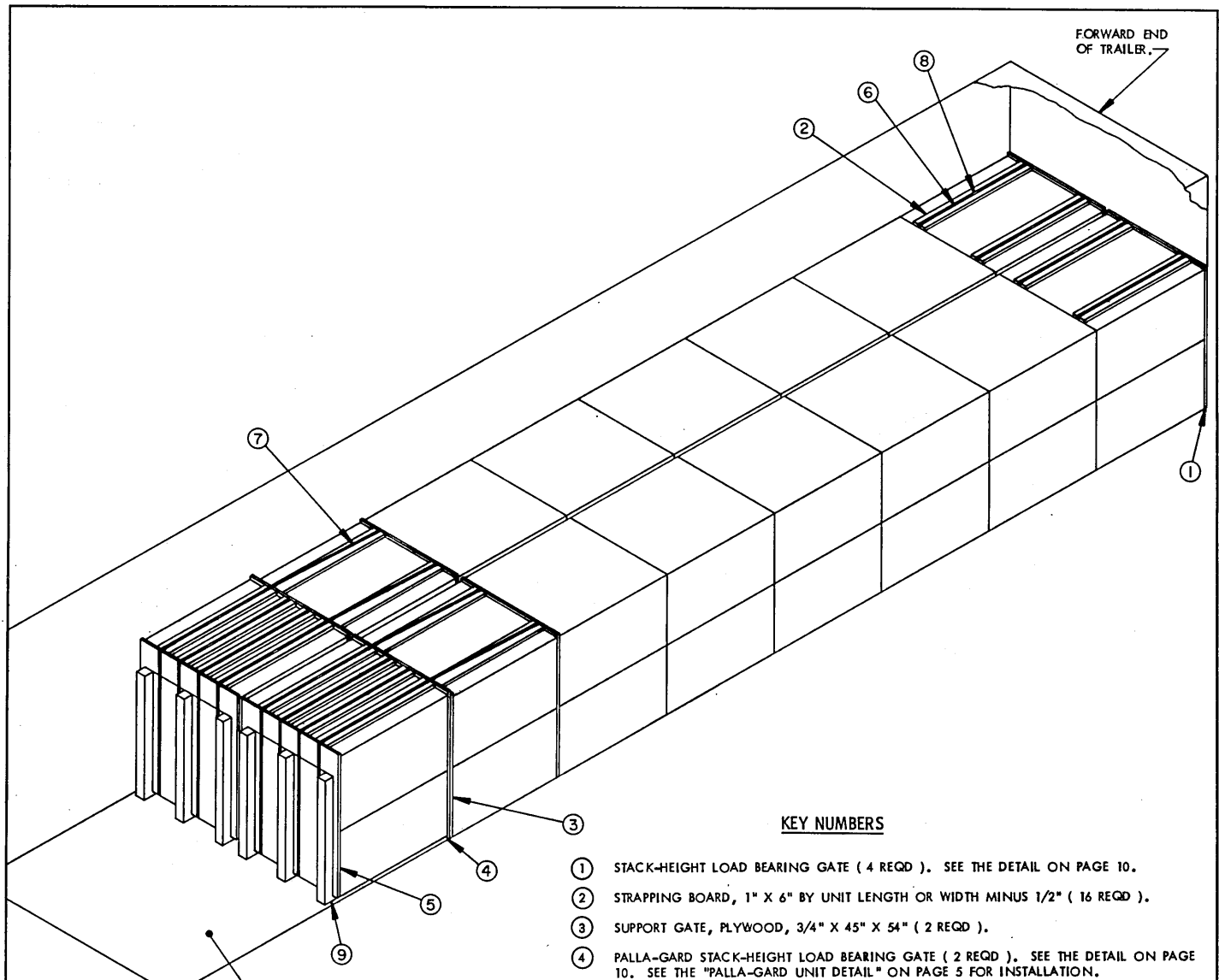
TYPICAL BOXED-TYPE PALLET UNIT

THIS PALLET IS DETAILED BY ORDNANCE CORPS DRAWING NO. F-7548604. THE PALLET IS DESIGNED FOR SHIPMENT OF THE DESIGNATED 2.75 INCH, 75MM, 76MM, 81MM, 90MM, 105MM, 106MM, AND 120MM AMMUNITION ITEMS. THE PALLET UNITS RANGE IN WEIGHT FROM 473 POUNDS TO 2,821 POUNDS. OUTLOADING PROCEDURES FOR BOXED-TYPE PALLET UNITS ARE SHOWN ON PAGES 4 AND 5.



TYPICAL "OPEN-TYPE" PALLET UNIT

THIS PALLET IS DETAILED BY PICATINNY ARSENAL DRAWING NO. F-8837835. THE PALLET IS DESIGNED FOR SHIPMENT OF THE DESIGNATED 2.75 INCH, 75MM, 76MM, 90MM, 105MM, 106MM, 120MM, 152MM, 155MM, AND 165MM AMMUNITION ITEMS. THE PALLET UNITS RANGE IN WEIGHT FROM 912 POUNDS TO 3,225 POUNDS. OUTLOADING PROCEDURES FOR "OPEN-TYPE" PALLET UNITS ARE SHOWN ON PAGES 6 THRU 9.



ISOMETRIC VIEW

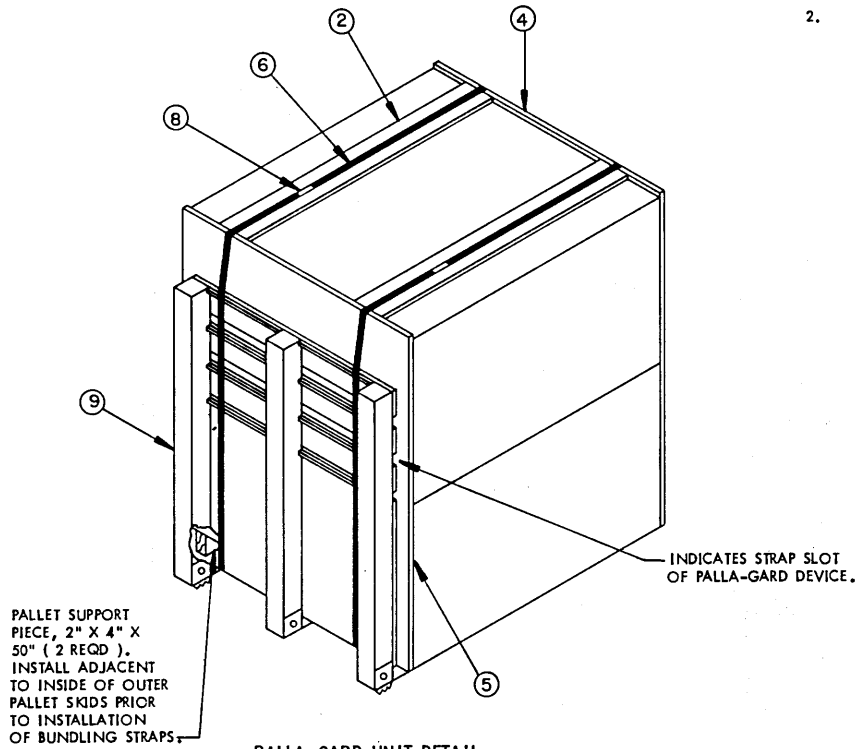
SEE GENERAL NOTE "I" ON PAGE 2.

KEY NUMBERS

- ① STACK-HEIGHT LOAD BEARING GATE (4 REQD). SEE THE DETAIL ON PAGE 10.
- ② STRAPPING BOARD, 1" X 6" BY UNIT LENGTH OR WIDTH MINUS 1/2" (16 REQD).
- ③ SUPPORT GATE, PLYWOOD, 3/4" X 45" X 54" (2 REQD).
- ④ PALLA-GARD STACK-HEIGHT LOAD BEARING GATE (2 REQD). SEE THE DETAIL ON PAGE 10. SEE THE "PALLA-GARD UNIT DETAIL" ON PAGE 5 FOR INSTALLATION.
- ⑤ STACK-HEIGHT SUPPORT GATE, PLYWOOD, 3/4" X 45" X 57-1/2" (2 REQD). SEE THE "PALLA-GARD UNIT DETAIL" ON PAGE 5 FOR INSTALLATION.
- ⑥ BUNDLING STRAP, 1-1/4" X .035" OR .031" X 19'-0" LONG STEEL STRAPPING (8 REQD). INSTALL SO AS TO ENCIRCLE A 2-HIGH STACK OF PALLET UNITS AND GATES, THREADING STRAP THROUGH HOLES IN GATE. THESE STRAPS WILL BE USED FOR THE LOAD UNIT WHICH IS ADJACENT TO THOSE PALLET UNITS SECURED TO A PALLA-GARD DEVICE AND THE LOAD UNIT WHICH IS AGAINST THE FORWARD END WALL OF THE TRAILER.
- ⑦ BUNDLING STRAPS, 1-1/4" X .035" OR .031" X 28'-0" LONG STEEL STRAPPING (4 REQD). INSTALL SO AS TO ENCIRCLE THE PALLA-GARD UNIT AND THE ADJACENT LOAD UNIT.
- ⑧ SEAL FOR 1-1/4" STRAP (12 REQD, 1 PER STRAP). CRIMP EACH SEAL WITH TWO PAIR OF NOTCHES. SEE GENERAL NOTE "Q" ON PAGE 2.
- ⑨ PALLA-GARD DEVICE (2 REQD). SEE THE "PALLA-GARD UNIT DETAIL" ON PAGE 5.

SPECIAL NOTES:

1. A 40'-0" LONG BY 7'-8" WIDE (INSIDE DIMENSION) TOFC VAN TRAILER IS SHOWN. TRAILERS OF OTHER DIMENSIONS CAN BE USED. SEE GENERAL NOTES "C" AND "T" ON PAGE 2.
2. THE TYPICAL PALLET UNIT SHOWN IN THE ISOMETRIC VIEW IS A BOXED-TYPE PALLET UNIT MEASURING 50" LONG BY 45" WIDE BY 28-1/2" HIGH AND WEIGHING 1,200 POUNDS. THE ACTUAL QUANTITY THAT CAN BE SHIPPED WILL DEPEND UPON THE WEIGHT AND/OR SIZE OF THE ITEM BEING LOADED AND THE CAPACITY OF THE TRAILER BEING USED.



PALLET SUPPORT PIECE, 2" X 4" X 50" (2 REQD). INSTALL ADJACENT TO INSIDE OF OUTER PALLET SKIDS PRIOR TO INSTALLATION OF BUNDLING STRAPS.

PALLA-GARD UNIT DETAIL

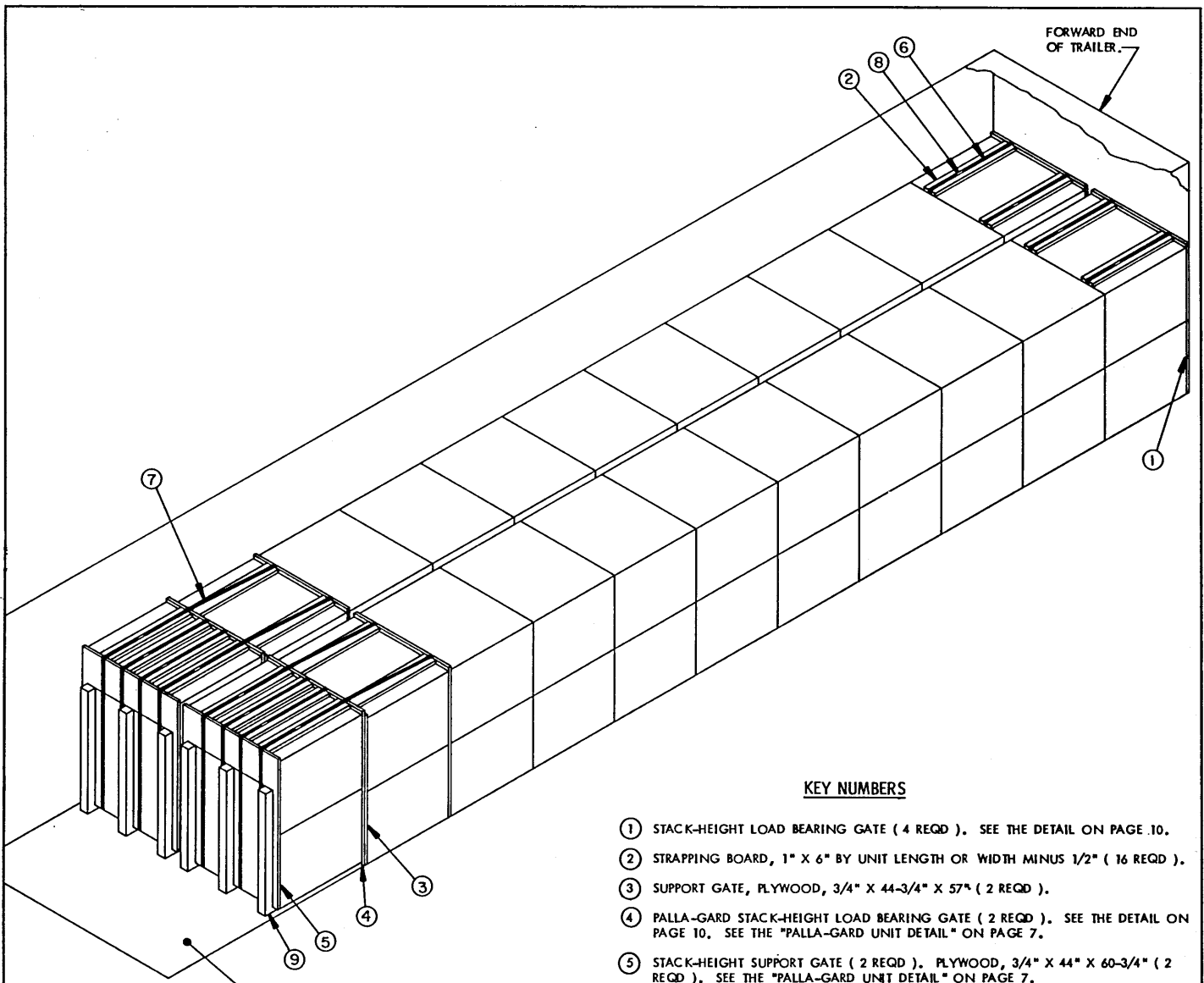
INDICATES A TWO-HIGH STACK OF 105MM METAL PARTS PALLET UNITS.
NOTE: STACK IS TO BE CENTERED. LATERALLY ON PALLA-GARD DEVICE.

BILL OF MATERIAL		
LUMBER	LINEAR FEET	BOARD FEET
1" X 6"	64	32
2" X 4"	17	12
PLYWOOD, 3/4" THICK	179 SQ FT REQD	369 LBS
STEEL STRAPPING, 1-1/4"	264' REQD	38 LBS
SEAL FOR 1-1/4" STRAPPING	12 REQD	1/2 LB
PALLA-GARD DEVICE	2 REQD	620 LBS

LOAD AS SHOWN

ITEM	QUANTITY	WEIGHT (APPROX)
M735, 105MM PALLET UNIT	32	35,840 LBS
DUNNAGE		1,116 LBS
TOTAL WEIGHT		36,956 LBS

TYPICAL 32-UNIT LOAD IN A 40'-0" LONG TOFC TRAILER



ISOMETRIC VIEW

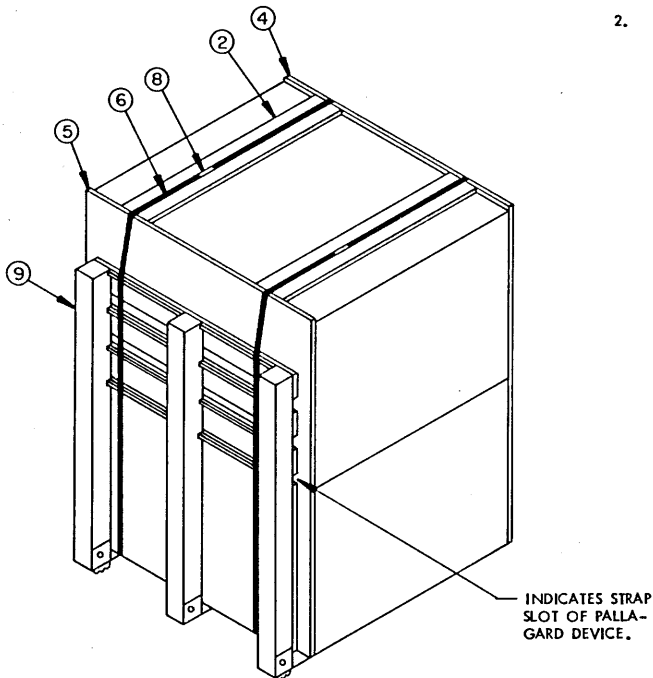
SEE GENERAL NOTE "T" ON PAGE 2.

KEY NUMBERS

- ① STACK-HEIGHT LOAD BEARING GATE (4 REQD). SEE THE DETAIL ON PAGE 10.
- ② STRAPPING BOARD, 1" X 6" BY UNIT LENGTH OR WIDTH MINUS 1/2" (16 REQD).
- ③ SUPPORT GATE, PLYWOOD, 3/4" X 44-3/4" X 57" (2 REQD).
- ④ PALLA-GARD STACK-HEIGHT LOAD BEARING GATE (2 REQD). SEE THE DETAIL ON PAGE 10. SEE THE "PALLA-GARD UNIT DETAIL" ON PAGE 7.
- ⑤ STACK-HEIGHT SUPPORT GATE (2 REQD). PLYWOOD, 3/4" X 44" X 60-3/4" (2 REQD). SEE THE "PALLA-GARD UNIT DETAIL" ON PAGE 7.
- ⑥ BUNDLING STRAP, 1-1/4" X .035" OR .031" X 18'-6" LONG STEEL STRAPPING (8 REQD). INSTALL SO AS TO ENCIRCLE A 2-HIGH STACK OF PALLET UNITS AND GATES, THREADING STRAP THROUGH HOLES IN GATE. THESE STRAPS WILL BE USED FOR THE LOAD UNIT WHICH IS AGAINST THE FORWARD END WALL OF THE TRAILER, AND THE LOAD UNIT WHICH IS ADJACENT TO THOSE PALLET UNITS SECURED TO A PALLA-GARD DEVICE.
- ⑦ BUNDLING STRAP, 1-1/4" X .035" OR .031" X 25'-0" LONG STEEL STRAPPING (4 REQD). INSTALL SO AS TO ENCIRCLE THE PALLA-GARD UNIT AND THE ADJACENT LOAD UNIT.
- ⑧ SEAL FOR 1-1/4" STRAP (12 REQD, 1 PER STRAP). CRIMP EACH SEAL WITH TWO PAIR OF NOTCHES. SEE GENERAL NOTE "Q" ON PAGE 2.
- ⑨ PALLA-GARD DEVICE (2 REQD). SEE THE "PALLA-GARD UNIT DETAIL" ON PAGE 7.

SPECIAL NOTES:

1. A 40'-0" LONG BY 7'-8" WIDE (INSIDE DIMENSION) TOFC VAN TRAILER IS SHOWN. TRAILERS OF OTHER DIMENSIONS CAN BE USED. SEE GENERAL NOTES "C" AND "T" ON PAGE 2.
2. THE TYPICAL PALLET UNIT SHOWN IN THE ISOMETRIC VIEW IS AN "OPEN-TYPE" PALLET UNIT MEASURING 38-1/2" LONG BY 44-3/4" WIDE BY 30" HIGH AND WEIGHING 912 POUNDS. THE ACTUAL QUANTITY THAT CAN BE SHIPPED WILL DEPEND UPON THE WEIGHT AND/OR SIZE OF THE ITEM BEING LOADED AND THE CAPACITY OF THE TRAILER BEING USED.



PALLA-GARD UNIT DETAIL

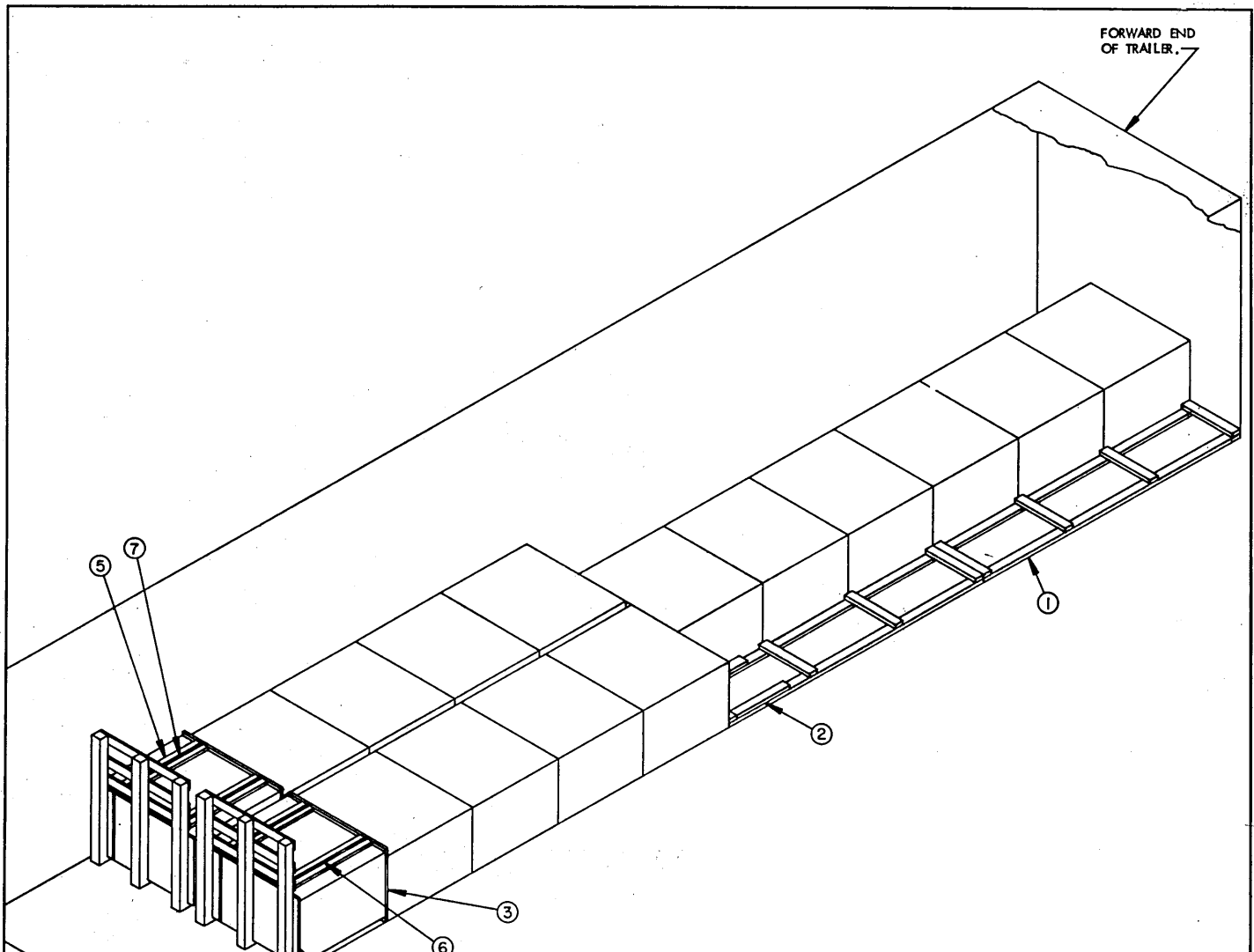
INDICATES A TWO-HIGH STACK OF 165MM PALLET UNITS. NOTE: STACK IS TO BE CENTERED LATERALLY ON A PALLA-GARD DEVICE.

BILL OF MATERIAL		
LUMBER	LINEAR FEET	BOARD FEET
1" X 6"	51	26
PLYWOOD, 3/4" THICK	185 SQ FT REQD	382 LBS
STEEL STRAPPING, 1-1/4"	248' REQD	35 LBS
SEAL FOR 1-1/4" STRAPPING	12 REQD	1/2 LB
PALLA-GARD DEVICE	2 REQD	620 LBS

LOAD AS SHOWN

ITEM	QUANTITY	WEIGHT (APPROX)
165MM PALLET UNIT	44	40,128 LBS
DUNNAGE		1,090 LBS
TOTAL WEIGHT		41,218 LBS

TYPICAL 44-UNIT LOAD IN A 40'-0" LONG TOFC TRAILER



FORWARD END OF TRAILER.

ISOMETRIC VIEW

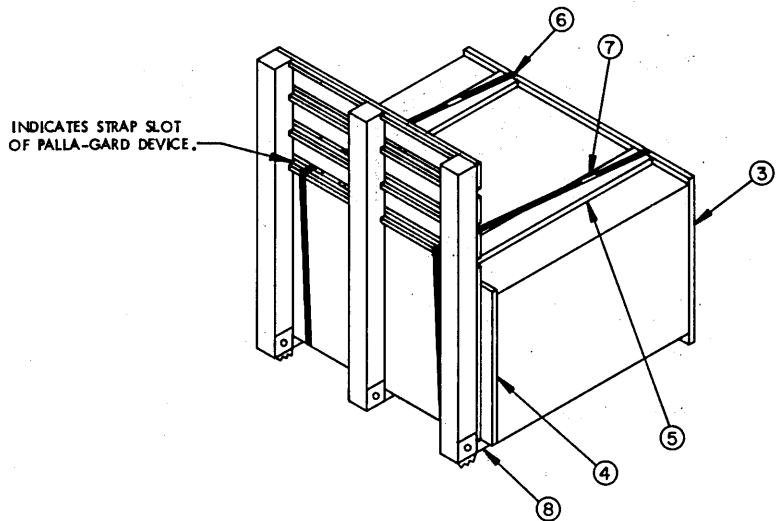
SEE GENERAL NOTE "T" ON PAGE 2.

KEY NUMBERS

- ① SIDE BLOCKING ASSEMBLY (4 REQD). SEE THE DETAIL ON PAGE 11. SEE GENERAL NOTE "N" ON PAGE 2. SEE SPECIAL NOTE 5 ON PAGE 9.
- ② REINFORCEMENT PIECE, 2" X 4" X 24" (4 REQD). NAIL TO THE SIDE BLOCKING, PIECE MARKED ① , W/5-10d NAILS.
- ③ PALLA-GARD STACK-HEIGHT LOAD BEARING GATE (2 REQD). SEE THE DETAIL ON PAGE 10. SEE THE "PALLA-GARD UNIT DETAIL" ON PAGE 9.
- ④ STACK-HEIGHT LOAD BEARING GATE (2 REQD). SEE THE DETAIL ON PAGE 10.
- ⑤ STRAPPING BOARD, 1" X 6" BY UNIT LENGTH OR WIDTH MINUS 1/2" (4 REQD).
- ⑥ BUNDLING STRAP, 1-1/4" X .035" OR .031" X 15'-0" LONG STEEL STRAPPING (4 REQD). INSTALL SO AS TO ENCIRCLE A PALLET UNIT, GATES AND PALLA-GARD DEVICE, THREADING STRAP THROUGH HOLES IN GATE AND UTILIZING THE LOWEST STRAP SLOT IN THE PALLA-GARD DEVICE. SEE THE "PALLA-GARD UNIT DETAIL" ON PAGE 9.
- ⑦ SEAL FOR 1-1/4" STRAPPING (4 REQD, 1 PER STRAP). CRIMP EACH SEAL WITH TWO PAIR OF NOTCHES. SEE GENERAL NOTE "Q" ON PAGE 2.
- ⑧ PALLA-GARD DEVICE (2 REQD). SEE THE "PALLA-GARD UNIT DETAIL" ON PAGE 9.

SPECIAL NOTES:

1. A 40'-0" LONG BY 7'-8" WIDE (INSIDE DIMENSION) TOFC VAN TRAILER IS SHOWN. TRAILERS OF OTHER DIMENSIONS CAN BE USED. SEE GENERAL NOTES "C" AND "I" ON PAGE 2.
2. THE TYPICAL PALLET UNIT SHOWN IN THE ISOMETRIC VIEW IS AN "OPEN-TYPE" PALLET UNIT MEASURING 38-1/8" LONG BY 44-3/4" WIDE BY 25-5/8" HIGH AND WEIGHING 2,548 POUNDS. THE ACTUAL QUANTITY THAT CAN BE SHIPPED WILL DEPEND UPON THE WEIGHT OF THE ITEM BEING LOADED AND THE CAPACITY OF THE TRAILER BEING USED.
3. THE TYPICAL LOAD SHOWN IS APPLICABLE FOR THE "OPEN-TYPE" PALLET UNITS AS DETAILED BY PICATINNY ARSENAL DRAWING NO. F-8837835. THE LOAD IS ALSO APPLICABLE FOR THE BOXED-TYPE PALLET UNITS AS DETAILED BY ORDNANCE CORPS DRAWING NO. F-7548604. THE PROCEDURES ARE APPLICABLE FOR LOADS WHICH CONSIST OF A FULL OR PARTIAL FIRST LAYER, AND WHICH MAY BE CLASSIFIED EITHER AS A FULL LOAD OR AS AN LTL, DEPENDING UPON THE WEIGHT OF THE ITEM BEING LOADED.
4. THE 2-WIDE PORTION OF A LOAD MAY BE DIVIDED, WITH SOME OF THE SIDE-BY-SIDE UNITS PLACED AT THE FORWARD END OF THE TRAILER, AS NECESSARY TO PROVIDE FOR PROPER WEIGHT DISTRIBUTION.
5. THE SIDE BLOCKING ASSEMBLY SHOWN IS DESIGNED FOR THE BRACING OF THREE (3) PALLETS; THE ASSEMBLY MAY BE ADAPTED AS NECESSARY FOR BRACING AGAINST ONE OR TWO PALLET UNITS.



PALLA-GARD UNIT DETAIL

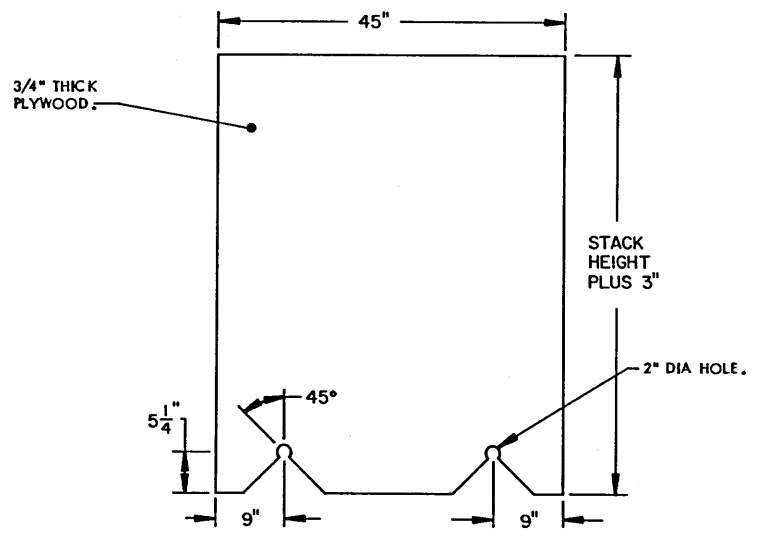
INDICATES ONE PALLET UNIT OF 120MM PROJECTILES. NOTE: PALLET UNIT IS TO BE CENTERED LATERALLY ON A PALLA-GARD DEVICE.

BILL OF MATERIAL (TYPICAL)		
LUMBER	LINEAR FEET	BOARD FEET
1" X 6"	12	6
2" X 4"	113	75
NAILS	NO. REQD	POUNDS
10d (3")	106	1-3/4
PLYWOOD, 3/4" THICK	35 SQ FT REQD	68 LBS
STEEL STRAPPING, 1-1/4"	60' REQD	9 LBS
SEAL FOR 1-1/4" STRAPPING	4 REQD	NIL
PALLA-GARD DEVICE	2 REQD	620 LBS

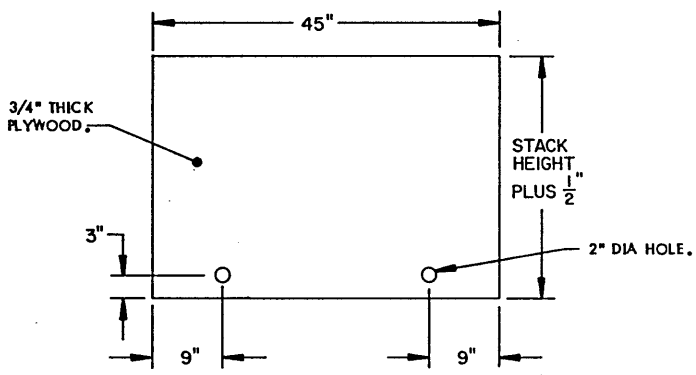
LOAD AS SHOWN

ITEM	QUANTITY	WEIGHT (APPROX)
120MM PALLET UNIT	-- 16	40,768 LBS
DUNNAGE		861 LBS
TOTAL WEIGHT		41,629 LBS

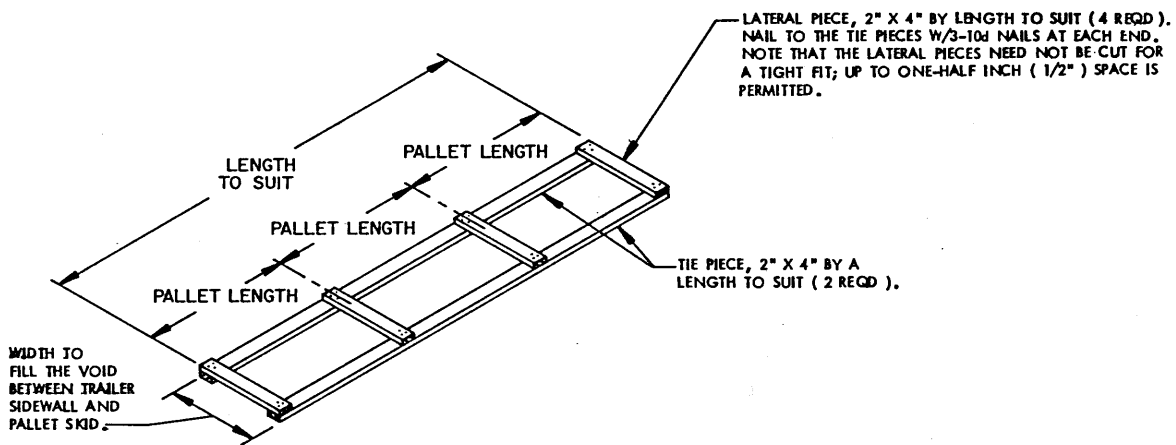
TYPICAL 16-UNIT LOAD IN A 40'-0" LONG TOFC TRAILER



PALLA-GARD STACK-HEIGHT LOAD BEARING GATE



STACK-HEIGHT LOAD BEARING GATE



SIDE BLOCKING

THIS ASSEMBLY IS DESIGNED FOR THE BRACING
 OF THREE PALLET UNITS; THE ASSEMBLY MAY BE
 ADAPTED AS NECESSARY FOR BRACING AGAINST
 ONE OR TWO PALLET UNITS.

