

APPENDIX 71

UNITIZATION PROCEDURES FOR MILITARY AMMUNITION AND COMPONENTS PACKED IN FIBERBOARD BOXES IN WIREBOUND OR FIBERBOARD 4-WAY ENTRY PALLET BOXES

FUZE, GRENADE, M223, PACKED 1,000 PER FIBERBOARD
BOX, UNITIZED 24 BOXES PER WIREBOUND PALLET
BOX (PALLET UNIT A) OR 18 BOXES PER FIBERBOARD
PALLET BOX (PALLET UNIT B); APPROX BOX SIZE
14 1/2" L X 12 1/2" W X 15" H

PALLET UNIT DATA							
ITEMS INCLUDED		HAZARD CLASSIFICATION ①				WEIGHT (LBS)	
NSN	DODIC	DOT CLASS	CG CLASS	QD CLASS	COMP GROUP	UNIT A	UNIT B
1330-01-052-4928	—	C	I	1.4	D	851	677

NOTICE: THIS APPENDIX CANNOT STAND ALONE BUT
MUST BE USED IN CONJUNCTION WITH THE BASIC
UNITIZATION PROCEDURES DRAWING 19-48-4169-20PA1006.

① HAZARD CLASSIFICATION DATA CONTAINED IN THE ABOVE CHART IS FOR GUIDANCE AND INFORMATIONAL PURPOSES ONLY. VERIFICATION OF THE SPECIFIED DATA SHOULD BE MADE BY CONSULTING THE MOST RECENT JOINT HAZARD CLASSIFICATION SYSTEM LISTING OR OTHER APPROVED LISTING (S).

REVISIONS				DRAFTSMAN <i>WJ</i> / <i>tm</i>	PROJ ENG <i>LAF</i> / <i>WRF</i>		
				CHECKER <i>GRS</i>	LOG ENGRS OFFICE <i>WJ</i> / <i>tm</i>		
				APPROVED, U.S. ARMY ARMAMENT, MUNITIONS AND CHEMICAL COMMAND (U.S. AMC-TRM)			
				APPROVED BY ORDER OF COMMANDING GENERAL, U.S. ARMY MATERIALS COMMAND (AMC)			
				<i>William F. Ernst</i> U.S. ARMY DEFENSE AMMUNITION CENTER AND SCHOOL			
				U.S. ARMY AMC DRAWING			
				FEBRUARY 1988			
				CLASS	DIVISION	DRAWING	FILE
				19	48	4169/71	20 PA 1006

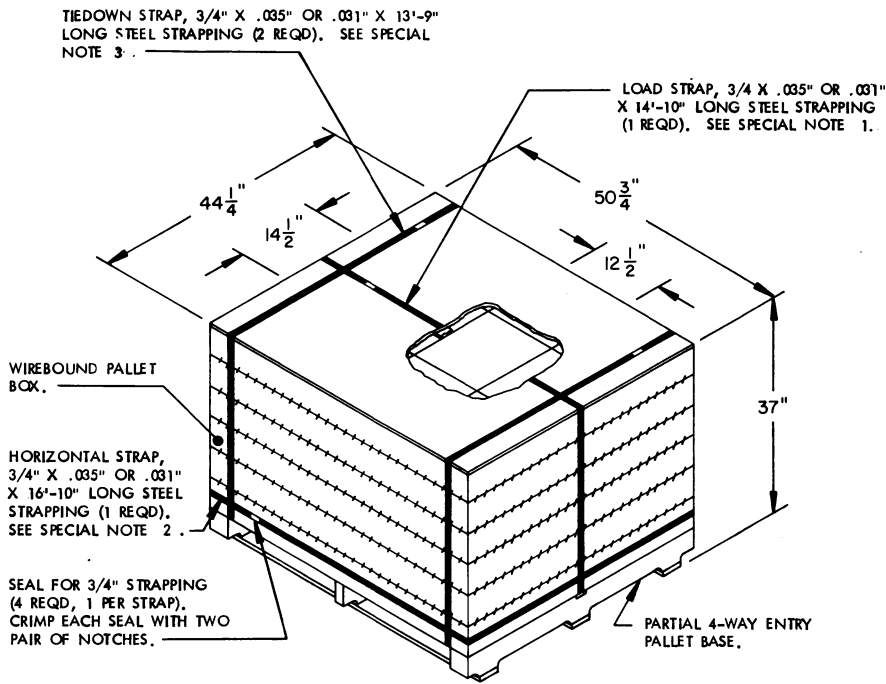
DO NOT SCALE

GENERAL NOTES

- A. THIS APPENDIX CANNOT STAND ALONE BUT MUST BE USED IN CONJUNCTION WITH THE BASIC UNITIZATION PROCEDURES DRAWING 19-48-4169-20PA1006. TO PRODUCE AN APPROVED UNIT LOAD, ALL PERTINENT PROCEDURES, SPECIFICATIONS AND CRITERIA SET FORTH WITHIN THE BASIC DRAWING WILL APPLY TO THE PROCEDURES DELINEATED IN THIS APPENDIX. ANY EXCEPTIONS TO THE BASIC PROCEDURES ARE SPECIFIED IN THIS APPENDIX.
- B. DIMENSIONS, CUBE AND WEIGHT OF A PALLET BOX UNIT WILL VARY SLIGHTLY DEPENDING UPON THE ACTUAL DIMENSIONS OF THE BOXES AND THE WEIGHT OF THE SPECIFIC ITEM BEING UNITIZED.
- C. OUTLOADING AND STORAGE OF THE ITEMS COVERED BY THIS APPENDIX SHALL BE ACCOMPLISHED IN ACCORDANCE WITH AMC (DARCOM) DRAWINGS IDENTIFIED WITHIN DA PAMPHLET 75-5.
- D. IF THE ITEMS COVERED HEREIN ARE UNITIZED PRIOR TO ISSUANCE OF THIS APPENDIX, THE BOXES NEED NOT BE REUNITIZED SOLELY TO CONFORM TO THIS APPENDIX.
- E. THE UNITIZATION PROCEDURES DEPICTED HEREIN MAY ALSO BE USED FOR UNITIZING GRENADE FUZES WHEN IDENTIFIED BY DIFFERENT NATIONAL STOCK NUMBERS (NSN) THAN WHAT IS SHOWN ON THE TITLE PAGE, PROVIDED THE BOX PACK DOES NOT VARY FROM WHAT IS DELINEATED HEREIN. THE EXPLOSIVE CLASSIFICATION OF OTHER ITEMS MAY BE DIFFERENT THAN WHAT IS SHOWN.

SPECIAL NOTES:

1. THE LOAD STRAP MUST BE THREADED THROUGH THE STRAP SLOT OF THE PALLET AS SHOWN. LOAD STRAP MUST BE TENSIONED AND SEALED PRIOR TO THE APPLICATION OF THE HORIZONTAL STRAP.
2. INSTALL HORIZONTAL STRAP TO ENCIRCLE PALLET BOX UNIT AS SHOWN. THE HORIZONTAL STRAP MUST BE TENSIONED AND SEALED PRIOR TO APPLICATION OF TIEDOWN STRAPS.
3. INSTALL EACH TIEDOWN STRAP TO PASS UNDER THE TOP DECK BOARDS OF THE PALLET AND LOCATE AS SHOWN. TIEDOWN STRAP MAY BE APPLIED BUT NOT TENSIONED UNTIL THE HORIZONTAL AND LOAD STRAPS HAVE BEEN INSTALLED, TENSIONED, AND SEALED.



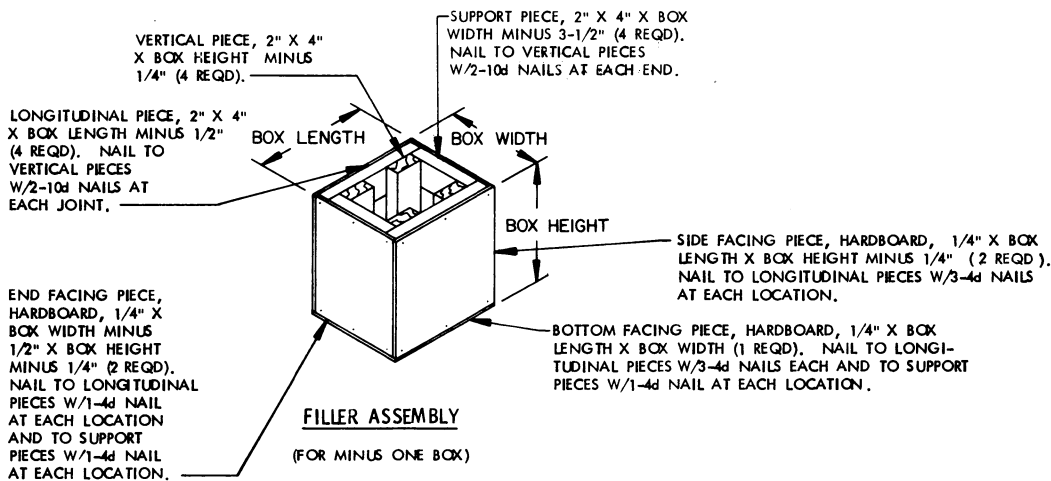
PALLET UNIT A

SEE GENERAL NOTE "B" ON PAGE 2.

24 BOXES OF GRENADE FUZES (1,000 PER BOX) @ 30 LBS	-----	720 LBS (APPROX)
DUNNAGE	-----	5 LBS
WIREBOUND PALLET BOX	-----	126 LBS
TOTAL WEIGHT	-----	851 LBS (APPROX)
CUBE	-----	48.1 CU FT (APPROX)

BILL OF MATERIAL (UNIT A)

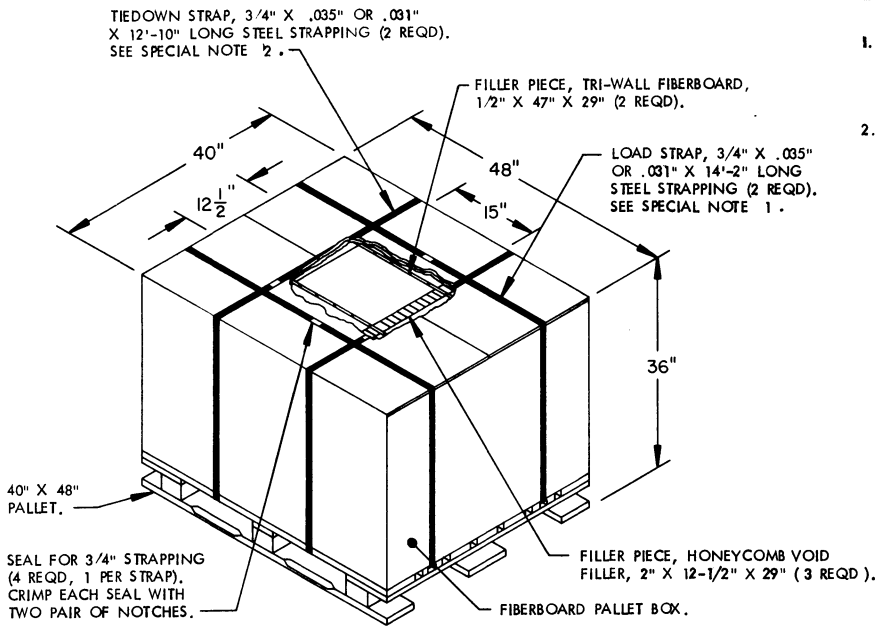
WIREBOUND PALLET BOX	-----	1 REQD	-----	126 LBS
STEEL STRAPPING, 3/4"	-----	59.17' REQD	-----	4.23 LBS
SEAL FOR 3/4" STRAPPING	-----	4 REQD	-----	NIL



UNIT LOAD A

SPECIAL NOTES:

1. THE LOAD STRAPS MUST BE THREADED THROUGH THE STRAP SLOTS OF THE PALLET AS SHOWN. LOAD STRAPS MUST BE TENSIONED AND SEALED PRIOR TO APPLICATION OF TIEDOWN STRAPS.
2. INSTALL EACH TIEDOWN STRAP TO PASS UNDER THE TOP DECK BOARDS OF THE PALLET. TIEDOWN STRAPS MAY BE APPLIED BUT NOT TENSIONED UNTIL THE LOAD STRAPS HAVE BEEN TENSIONED AND SEALED.



PALLET UNIT B

SEE GENERAL NOTE "B" ON PAGE 2.

18 BOXES OF GRENADE FUZES (1,000 PER BOX) @ 30 LBS	-----	540 LBS (APPROX)
DUNNAGE	-----	15 LBS
FIBERBOARD PALLET BOX	-----	122 LBS
TOTAL WEIGHT		----- 677 LBS (APPROX)
CUBE		----- 40.0 CU FT (APPROX)

BILL OF MATERIAL (UNIT B)

FIBERBOARD PALLET BOX	-----	1 REQD	-----	122 LBS
STEEL STRAPPING, 3/4"	-----	54.00' REQD	-----	3.86 LBS
SEAL FOR 3/4" STRAPPING	-----	4 REQD	-----	NIL
TRI-WALL, FIBERBOARD, 1/2"	-----	18.93 SQ FT REQD	-----	8.55 LBS
HONEYCOMB, 2"	-----	7.55 SQ FT REQD	-----	2.51 LBS

