

## APPENDIX III

# UNITIZATION PROCEDURES FOR MILITARY AMMUNITION AND COMPONENTS PACKED IN FIBERBOARD BOXES IN WIREBOUND OR FIBERBOARD 4-WAY ENTRY PALLET BOXES

CARTRIDGE, CHAFF, PACKED 120 PER FIBERBOARD BOX,  
UNITIZED 18 BOXES PER WIREBOUND PALLET BOX  
(PALLET UNIT A) OR 24 BOXES PER FIBERBOARD  
PALLET BOX (PALLET UNIT B); APPROX BOX SIZE  
16 $\frac{3}{4}$ " L X 14" W X 11" H

PALLET UNIT DATA							
ITEMS INCLUDED		HAZARD CLASSIFICATION <sup>①</sup>				WEIGHT (LBS)	
NSN	DODIC	DOT CLASS	CG CLASS	QD CLASS	COMP GROUP	UNIT A	UNIT B
1370-01-037-8414	LY07	-----	-----	INERT	-----	838	1,110

NOTICE: THIS APPENDIX CANNOT STAND ALONE BUT MUST BE USED IN CONJUNCTION WITH THE BASIC UNITIZATION PROCEDURES DRAWING 19-48-4169-20PA1006.

① HAZARD CLASSIFICATION DATA CONTAINED IN THE ABOVE CHART IS FOR GUIDANCE AND INFORMATIONAL PURPOSES ONLY. VERIFICATION OF THE SPECIFIED DATA SHOULD BE MADE BY CONSULTING THE MOST RECENT JOINT HAZARD CLASSIFICATION SYSTEM LISTING OR OTHER APPROVED LISTING(S).

REVISIONS				DRAFTSMAN <i>WJ</i>	PROJ. ENG. <i>LAF/WRE</i>
				CHECKER <i>WJ</i>	LOG ENGRG OFFICE <i>WJ</i>
				APPROVED, U.S. ARMY AMMUNITION, ORDNANCE AND CHEMICAL COMMAND	
				<i>William F. Egan</i> SAC - SAC	
				APPROVED BY ORDER OF COMMANDING GENERAL, U.S. ARMY MATERIAL CENTER AND SCHOOL	
				<i>William F. Egan</i> U.S. ARMY DEFENSE AMMUNITION CENTER AND SCHOOL	
U.S. ARMY AMC DRAWING					
SEPTEMBER 1985					
				CLASS	DIVISION
				DRAWING	FILE
				19	48
				4169/ 111	20PA 1006

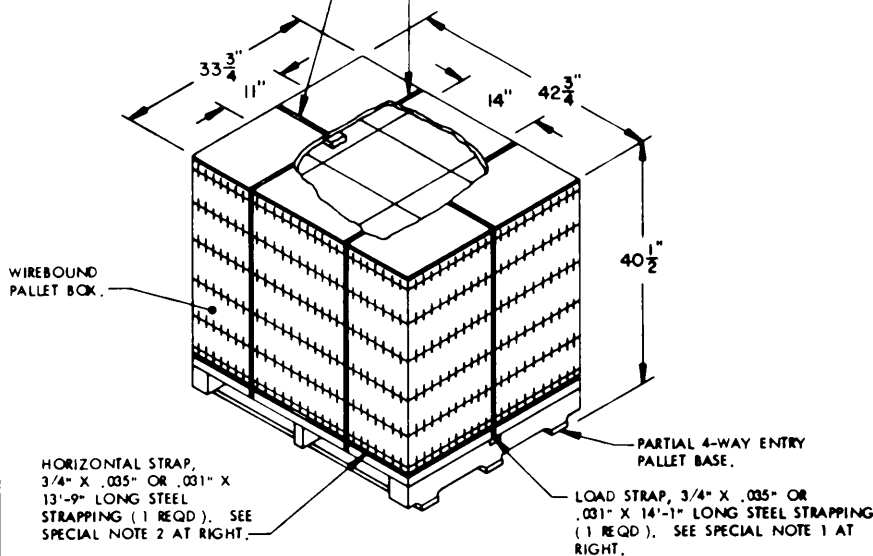
**DO NOT SCALE**

## GENERAL NOTES

- A. THIS APPENDIX CANNOT STAND ALONE BUT MUST BE USED IN CONJUNCTION WITH THE BASIC UNITIZATION PROCEDURES DRAWING 19-48-4169-20PA1006. TO PRODUCE AN APPROVED UNIT LOAD, ALL PERTINENT PROCEDURES, SPECIFICATIONS AND CRITERIA SET FORTH WITHIN THE BASIC DRAWING WILL APPLY TO THE PROCEDURES DELINEATED IN THIS APPENDIX. ANY EXCEPTIONS TO THE BASIC PROCEDURES ARE SPECIFIED IN THIS APPENDIX.
- B. DIMENSIONS, CUBE AND WEIGHT OF A PALLET BOX UNIT WILL VARY SLIGHTLY DEPENDING UPON THE ACTUAL DIMENSIONS OF THE BOXES AND THE WEIGHT OF THE SPECIFIC ITEM BEING UNITIZED.
- C. OUTLOADING AND STORAGE OF THE ITEMS COVERED BY THIS APPENDIX SHALL BE ACCOMPLISHED IN ACCORDANCE WITH AMC (DARCOM) DRAWINGS IDENTIFIED WITHIN DA PAMPHLET 75-5.
- D. IF THE ITEMS COVERED HEREIN ARE UNITIZED PRIOR TO ISSUANCE OF THIS APPENDIX, THE BOXES NEED NOT BE REUNITIZED SOLELY TO CONFORM TO THIS APPENDIX.
- E. THE UNITIZATION PROCEDURES DEPICTED HEREIN MAY ALSO BE USED FOR UNITIZING CHAFF CARTRIDGES WHEN IDENTIFIED BY DIFFERENT NATIONAL STOCK NUMBERS (NSN) THAN WHAT IS SHOWN ON THE TITLE PAGE, PROVIDED THE BOX PACK DOES NOT VARY FROM WHAT IS DELINEATED HEREIN. THE EXPLOSIVE CLASSIFICATION OF OTHER ITEMS MAY BE DIFFERENT THAN WHAT IS SHOWN.

SEAL FOR 3/4" STRAPPING ( 4 REQD, 1 PER STRAP ). CRIMP EACH SEAL WITH TWO PAIR OF NOTCHES.

TIEDOWN STRAP, 3/4" X .035" OR .031" X 12'-7" LONG STEEL STRAPPING ( 2 REQD ). SEE SPECIAL NOTE 3 AT RIGHT.



**PALLET UNIT A**

SEE GENERAL NOTE "B" ON PAGE 2.

18 BOXES OF CHAFF CARTRIDGES ( 120 PER BOX ) : 41 LBS----- 738 LBS ( APPROX )  
 DUNNAGE----- 4 LBS  
 WIREBOUND PALLET BOX----- 96 LBS

TOTAL WEIGHT----- 838 LBS ( APPROX )  
 CUBE----- 33.8 CU FT ( APPROX )

**BILL OF MATERIAL ( UNIT A )**

WIREBOUND PALLET BOX	----- 1 REQD	----- 96 LBS
STEEL STRAPPING, 3/4"	----- 53.00' REQD	----- 3.79 LBS
SEAL FOR 3/4" STRAPPING	----- 4 REQD	----- NIL

**SPECIAL NOTES:**

1. THE LOAD STRAP MUST BE THREADED THROUGH THE STRAP SLOT OF THE PALLET. THE LOAD STRAP MUST BE TENSIONED AND SEALED PRIOR TO THE APPLICATION OF THE HORIZONTAL STRAP.
2. INSTALL THE HORIZONTAL STRAP TO ENCIRCLE THE PALLET BOX UNIT AS SHOWN. THE HORIZONTAL STRAP MUST BE TENSIONED AND SEALED PRIOR TO APPLICATION OF TIEDOWN STRAPS.
3. INSTALL TIEDOWN STRAPS TO PASS UNDER THE TOP DECK BOARDS OF THE PALLET AND LOCATE AS SHOWN. TIEDOWN STRAPS MAY BE APPLIED BUT NOT TENSIONED UNTIL THE HORIZONTAL AND LOAD STRAPS HAVE BEEN INSTALLED, TENSIONED AND SEALED.

LATERAL PIECE, 2" X 4" X BOX HEIGHT MINUS 3-1/2" ( 4 REQD ).

LONGITUDINAL PIECE, 2" X 4" X BOX WIDTH MINUS 1/2" ( 4 REQD ). NAIL TO LATERAL PIECES AND VERTICAL PIECES W/2-10d NAILS AT EACH LOCATION.

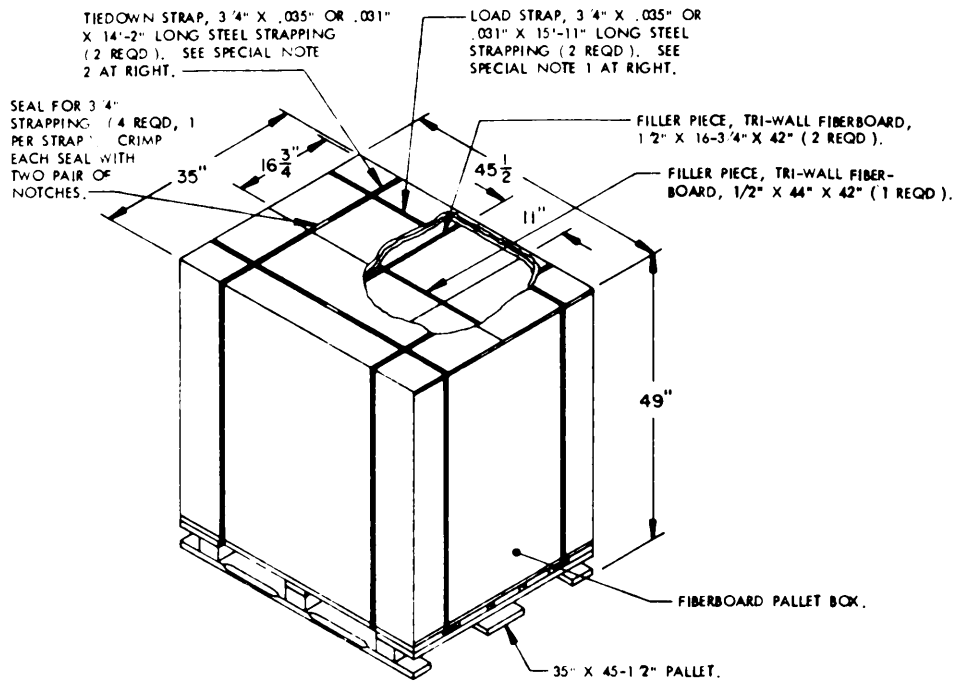
VERTICAL PIECE, 2" X 4" X BOX LENGTH MINUS 1/4" ( 4 REQD ).

SIDE FACING PIECE, HARDBOARD, 1/4" X BOX WIDTH X BOX LENGTH MINUS 1/4" ( 2 REQD ). NAIL TO LONGITUDINAL PIECES W/3-4d NAILS AT EACH LOCATION.

END FACING PIECE, HARDBOARD, 1/4" X BOX HEIGHT MINUS 1/2" X BOX LENGTH MINUS 1/4" ( 2 REQD ). NAIL TO LATERAL PIECES W/3-4d NAILS AT EACH LOCATION.

BOTTOM FACING PIECE, HARDBOARD, 1/4" X BOX WIDTH X BOX HEIGHT ( 1 REQD ). NAIL TO LATERAL PIECES AND LONGITUDINAL PIECES W/3-4d NAILS AT EACH LOCATION.

**FILLER ASSEMBLY**  
( FOR MINUS ONE BOX )



**SPECIAL NOTES:**

- 1 THE LOAD STRAPS MUST BE THREADED THROUGH THE STRAP SLOTS OF THE PALLET AS SHOWN. LOAD STRAPS MUST BE TENSIONED AND SEALED PRIOR TO APPLICATION OF TIEDOWN STRAPS.
- 2 INSTALL EACH TIEDOWN STRAP TO PASS UNDER THE TOP DECK BOARDS OF THE PALLET. TIEDOWN STRAPS MAY BE APPLIED BUT NOT TENSIONED UNTIL LOAD STRAPS HAVE BEEN INSTALLED, TENSIONED AND SEALED.

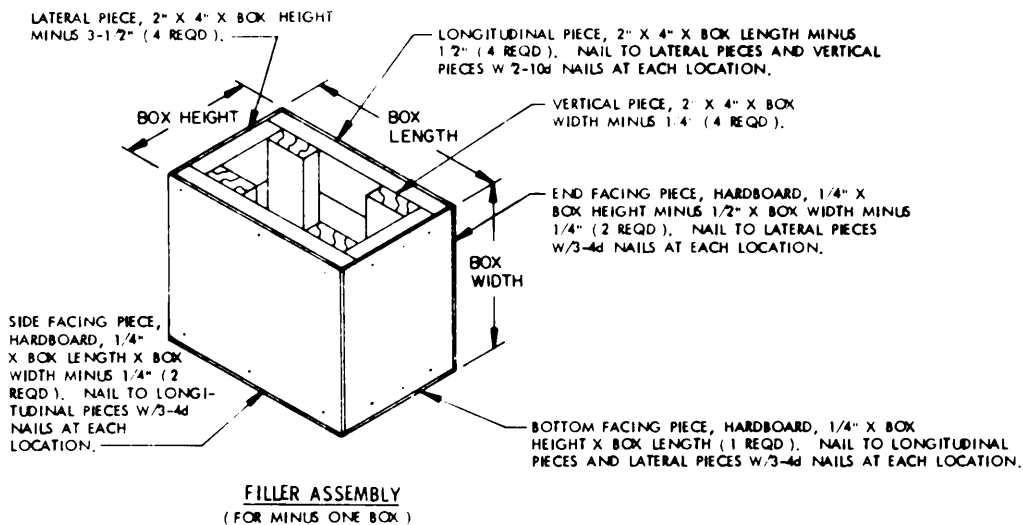
**PALLET UNIT B**

SEE GENERAL NOTE "B" ON PAGE 2.

24 BOXES OF CHAFF CARTRIDGES (120 PER BOX) :	41 LBS -----	984 LBS (APPROX)
DUNNAGE	-----	16 LBS
FIBERBOARD PALLET BOX	-----	110 LBS
TOTAL WEIGHT -----		1,110 LBS (APPROX)
Cube -----		45.2 CU FT (APPROX)

**BILL OF MATERIAL (UNIT B)**

FIBERBOARD PALLET BOX	-----	1 REQD -----	110 LBS
STEEL STRAPPING, 3/4"	-----	60 17' REQD -----	4.30 LBS
SEAL FOR 3/4" STRAPPING	-----	4 REQD -----	NIL
TRI-WALL FIBERBOARD, 1/2"	-----	22 60 SQ FT REQD -----	10.22 LBS



**FILLER ASSEMBLY**  
(FOR MINUS ONE BOX)