

STORAGE IN APPROVED MAGAZINES OF SOLUTION A, UNITIZED 4 DRUMS PER 48" L X 48" W X 39-3/4" H PALLET UNIT AND SOLUTION B, UNITIZED 4 DRUMS PER 40" L X 48" W X 34" H PALLET UNIT

INDEX

<u>ITEM</u>	<u>PAGE(S)</u>
GENERAL NOTES, AND MATERIAL SPECIFICATIONS -----	2
DETAILS -----	3
STORAGE PROCEDURES (EARTH-COVERED MAGAZINES):	
81'-0", 60'-8" AND 40'-4" L X 26'-6" W X 12'-9" H IGLOO MAGAZINES -----	4- 7
80' AND 40' L X 25' W X 10' H ARCH TYPE MAGAZINES (IGLOO) -----	8-11
80' AND 40' L X 25' W X 11' H ARCH TYPE MAGAZINES (IGLOO) -----	12-15
80' AND 40' L X 25' W X 12'-1-3/4" H ARCH TYPE MAGAZINES (IGLOO) -----	16-19
81'-2" L X 26'-6" W X 12'-1-3/4" H ARCH TYPE MAGAZINE (IGLOO) -----	20-23
80' L X 25' W X 14'-0" H STRADLEY AND 89' L X 24'-10" W X 14'-4" H OVAL ARCH MAGAZINES -----	24-27
52' DIA CORBETTA MAGAZINE -----	28-31
100'-8" L X 50'-0" W RECTANGULAR MAGAZINE -----	32-35
TYPICAL MULTIPLE-LOT STORAGE PROCEDURES -----	36

DO NOT SCALE

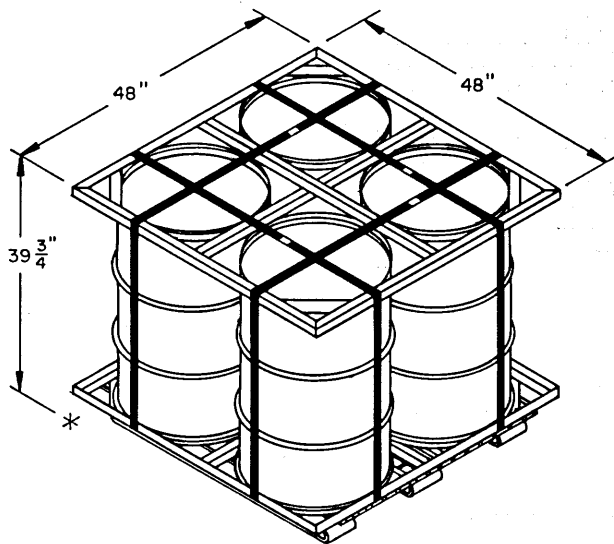
REVISIONS				<small>DRAFTSMAN</small> <i>RSB</i> / <i>JMS</i>	<small>PROJ. ENG.</small> <i>RSB</i> / <i>DES</i>
				<small>CHECKER</small> <i>RSB</i> / <i>JMM</i>	<small>LOG ENGINE OFFICE</small> <i>PH</i> / <i>...</i>
				<small>APPROVED, U. S. ARMY ARMAMENT MATERIEL READINESS COMMAND</small>	
				<small>APPROVED BY ORDER OF COMMANDING GENERAL, U. S. ARMY MATERIEL DEVELOPMENT AND READINESS COMMAND (DARCOM)</small> <i>John H. Snyder</i> <small>U. S. ARMY DEFENSE AMMUNITION CENTER AND SCHOOL</small>	
				U. S. ARMY DARCOM DRAWING	
				APRIL 1980	
				<small>CLASS</small> 19	<small>DIVISION</small> 48
				<small>DRAWING</small> 4148	<small>FILE</small> 1-3-4-14- 22PN1000

GENERAL NOTES

- A. THIS DOCUMENT HAS BEEN PREPARED AND ISSUED IN ACCORDANCE WITH AR 740-1, AND AUGMENTS TM 743-200-1 (CHAPTER 5).
- B. THE STORAGE PROCEDURES DEPICTED WITHIN THIS DOCUMENT ARE APPLICABLE FOR STORAGE IN VARIOUS TYPES AND SIZES OF MAGAZINES. THE STORAGE PROCEDURES DEPICTED FOR THE SPECIFIC TYPES OF MAGAZINES MAY ALSO BE UTILIZED TO STORE SOLUTION A AND/OR SOLUTION B PALLET UNITS AS DETAILED ON PAGE 3. IN OTHER TYPES OF APPROVED MAGAZINES, MINOR ADJUSTMENTS MAY BE MADE TO FACILITATE STORAGE IN OTHER TYPES OF MAGAZINES, HOWEVER, THE BASIC PRINCIPLES AS DEPICTED HEREIN WILL BE FOLLOWED.
- C. STORED PALLET UNITS MUST NOT CONTACT THE WALLS OF A MAGAZINE. TO PROVIDE FOR THIS MANDATORY CLEARANCE REQUIREMENT, UNITS MAY BE ELIMINATED FROM THE DEPICTED STORAGE PATTERN AS NECESSARY.
- D. AISLE DIMENSIONS SHOWN FOR STORAGE PROCEDURES IN MAGAZINES MAY BE ADJUSTED TO SUIT LOCAL CONDITIONS, VARIATIONS IN PALLET UNIT DIMENSIONS, AND/OR AVAILABLE MATERIALS HANDLING EQUIPMENT.
- E. THE USE OF "FLOOR DUNNAGE" UNDER METAL PALLETS IS OPTIONAL, ALTHOUGH THE USE OF THIS TYPE OF DUNNAGE IS DELINEATED WITHIN THIS STORAGE PROCEDURE DRAWING. THE PURPOSE OF FLOOR DUNNAGE IS TO HELP KEEP THE RUNNERS OF A PALLET DRY, THUS AIDING IN PREVENTING DETERIORATION DUE TO OXIDATION (RUSTING). THEREFORE, FLOOR DUNNAGE SHOULD BE USED WHEN STORING IN A MAGAZINE THAT IS KNOWN TO HAVE A "DAMP" FLOOR. ALSO, IN LIEU OF USING ONE-INCH THICK FLOOR DUNNAGE AS SPECIFIED, THE USE OF THICKER FLOOR DUNNAGE MAY BE REQUIRED, AND SHOULD BE USED, TO ACHIEVE THE DESIRED OBJECTIVE.
- F. IF AVAILABLE MHE PERMITS, ADDITIONAL PALLETIZED UNITS MAY BE STORED WITHIN THE FRONTAL AREA AND/OR OTHER AVAILABLE AREA OF THE MAGAZINE.
- G. THE HEIGHT OF THE PACKAGE GUARD ON SOME FORKLIFT TRUCKS MAY NOT PERMIT PLACEMENT OF SOME TOP LAYER UNITS IN THE STACKS SHOWN IN THE STORAGE VIEWS HEREIN, UNLESS TWO UPPER PALLET UNITS ARE HANDLED AS ONE LIFT OR THE PACKAGE GUARD IS REMOVED (TINE CARRIAGE WILL IN MOST INSTANCES PROVIDE ADEQUATE PACKAGE GUARD PROTECTION). ONLY A FORKLIFT TRUCK OF ADEQUATE CAPACITY WILL BE USED WHEN LIFTING TWO PALLET UNITS AS ONE LIFT.
- H. STACK-STABILIZING DUNNAGE IN THE FORM OF "SHIMS" PROBABLY WILL BE REQUIRED TO ACHIEVE SOUND AN ACCEPTABLE STABLE STACKS. SHIM MATERIAL OF VARYING THICKNESSES WILL BE USED AS REQUIRED TO GAIN LEVEL OR NEARLY LEVEL STACKS AND SOLID BEARING WITHIN A STACK FROM THE FLOOR OF A MAGAZINE TO THE TOP OF THE STACK.
- J. SOLUTION A AND/OR SOLUTION B PRESENTLY STORED IN ACCORDANCE WITH A PRIOR APPROVED DRAWING NEED NOT BE RE-STORED SOLELY TO CONFORM TO THE PROCEDURES SPECIFIED IN THIS DOCUMENT.
- K. DUNNAGE LUMBER SPECIFIED THROUGHOUT THIS PROCEDURAL DRAWING IS OF NOMINAL SIZE. FOR EXAMPLE, 1" X 6" MATERIAL IS ACTUALLY 3/4" THICK BY 5-1/2" WIDE.
- L. PORTIONS OF THE MAGAZINES, SUCH AS SIDEWALLS, END WALLS, AND ROOFS, HAVE NOT BEEN SHOWN IN THE STORAGE VIEWS FOR CLARITY PURPOSES.
- M. STORAGE OF MULTIPLE LOTS IN A MAGAZINE WILL REQUIRE CAREFUL PREPLANNING SO AS TO INSURE MHE ACCESSIBILITY TO ANY LOT IN ACCORDANCE WITH REQUIREMENTS SET FORTH IN THE APPLICABLE "SPECIAL NOTES" SECTIONS OF THE MULTIPLE-LOT STORAGE PROCEDURES TYPICALLY SHOWN ON PAGE 36.
- N. ALTHOUGH SPECIFIC PROCEDURES ARE INCLUDED IN THIS DRAWING FOR STORING MULTIPLE LOTS WITHIN ONE STRUCTURE, THE BASIC STORAGE PATTERNS AS SHOWN ON PAGES 4 THRU 35 CAN ALSO BE ADAPTED FOR THE STORING OF MORE THAN ONE LOT. LOTS WHEN STORED IN ACCORDANCE WITH A BASIC STORAGE PATTERN MAY BE STORED WITH ONE OR MORE ROWS USED FOR EACH LOT. A SPACE OF APPROXIMATELY 1" WILL HAVE TO BE LEFT BETWEEN ADJACENT ROWS CONTAINING DIFFERENT LOTS. IN BASIC STORAGE PATTERNS WHERE THE WIDTH OF A ROW IS ESTABLISHED BY THE 48" UNIT-DIMENSION, EACH ROW MAY BE A DIFFERENT LOT AND BE READILY REMOVABLE. IN BASIC STORAGE PATTERNS WHERE THE WIDTH OF A ROW IS ESTABLISHED BY THE 40" UNIT-DIMENSION, A LOT MUST CONSIST OF TWO OR MORE ROWS TO PROVIDE ADEQUATE SPACE TO ACCOMMODATE THE WIDTH OF A FORKLIFT TRUCK FOR STORING OR REMOVING THE LOT. HOWEVER, WHEN THE SIZE OF A LOT REQUIRES THE SPACE OF ONLY ONE ROW, IT IS PERMISSIBLE TO STORE THAT LOT WITH THE 48" UNIT-DIMENSION ESTABLISHING THE WIDTH OF THAT ROW, PROVIDING THE STORAGE PRINCIPLES SPECIFIED ARE FOLLOWED AS CLOSELY AS POSSIBLE. THE 1" SPACE BETWEEN LOTS, AS STATED ABOVE, WILL NOT BE EXCEEDED SOLELY TO ACCOMMODATE THE WIDTH OF A FORKLIFT TRUCK. WHEN A BASIC STORAGE PATTERN IS USED FOR MULTIPLE-LOTS, IT IS PERMISSIBLE TO ELIMINATE THE USE OF A STAGGERED-LAYER STORAGE PATTERN AS SHOWN. FOR ADDITIONAL REQUIREMENTS AND GUIDANCE, SEE THE SPECIAL NOTES FOR MULTIPLE-LOT STORAGE ON PAGE 36.

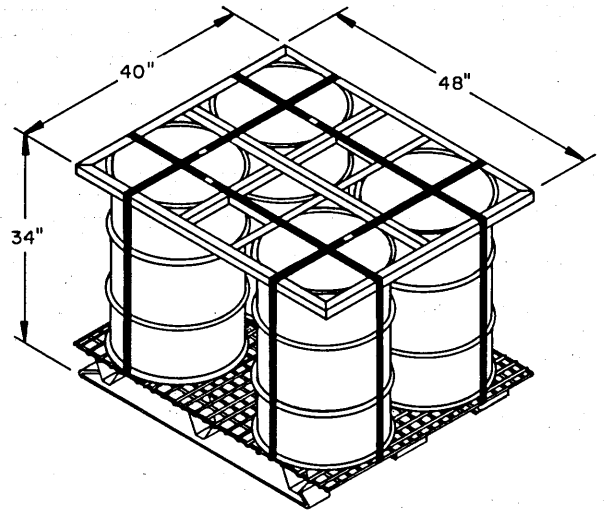
MATERIAL SPECIFICATIONS

LUMBER ----- SEE TM 743-200-1, DUNNAGE LUMBER, FED SPEC MM-L-751.



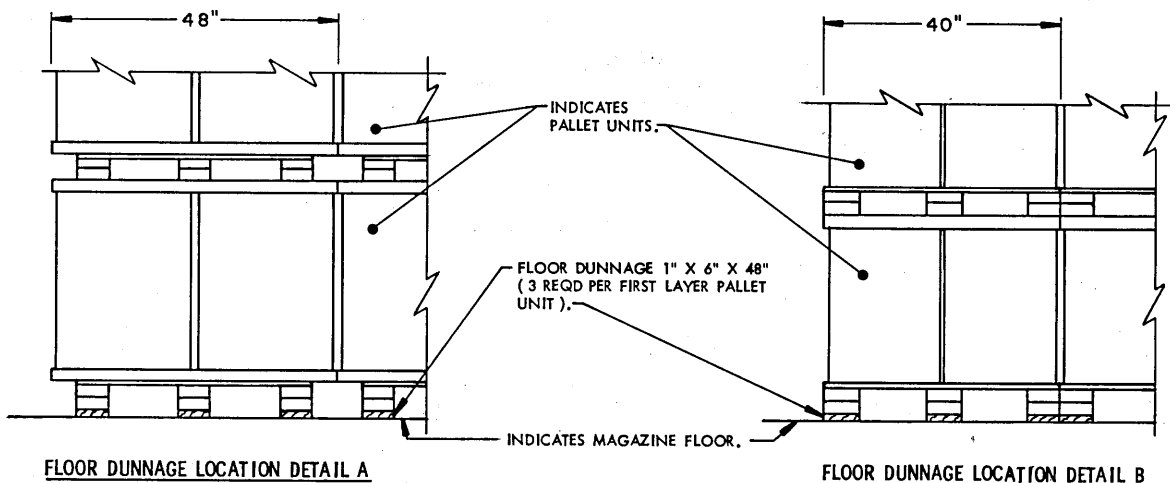
SOLUTION A, 4/1 PALLET

UNIT WEIGHT ----- 1,969 LBS (APPROX)

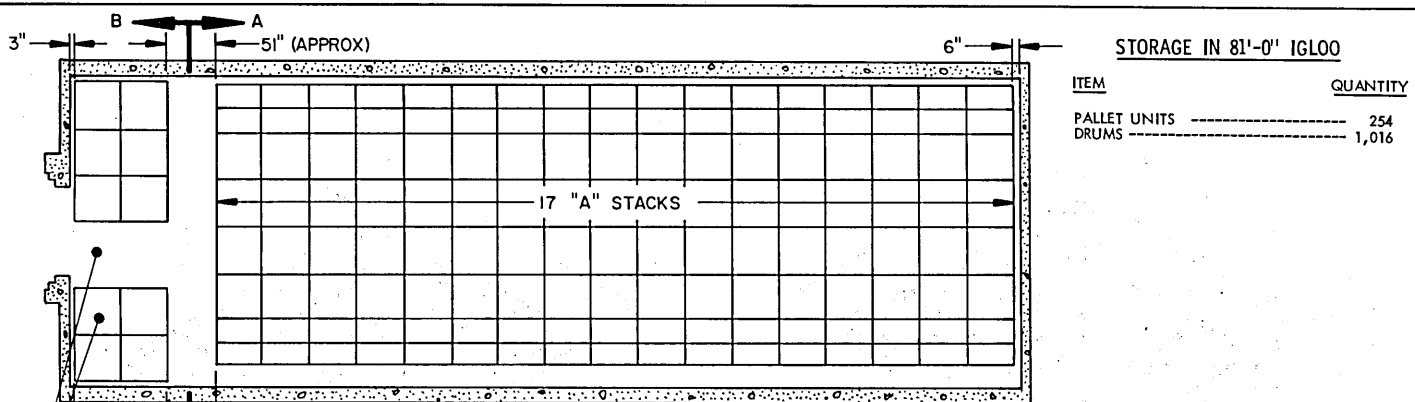


SOLUTION B, 4/1 PALLET

UNIT WEIGHT ----- 1,636 LBS (APPROX)



ISOMETRIC VIEWS WITHIN THIS DRAWING DO NOT DEPICT ALL FLOOR DUNNAGE THAT IS REQUIRED WHEN FLOOR DUNNAGE IS USED. FLOOR DUNNAGE IS SHOWN AT SOME LOCATIONS TO PROVIDE POSITIONING GUIDANCE.

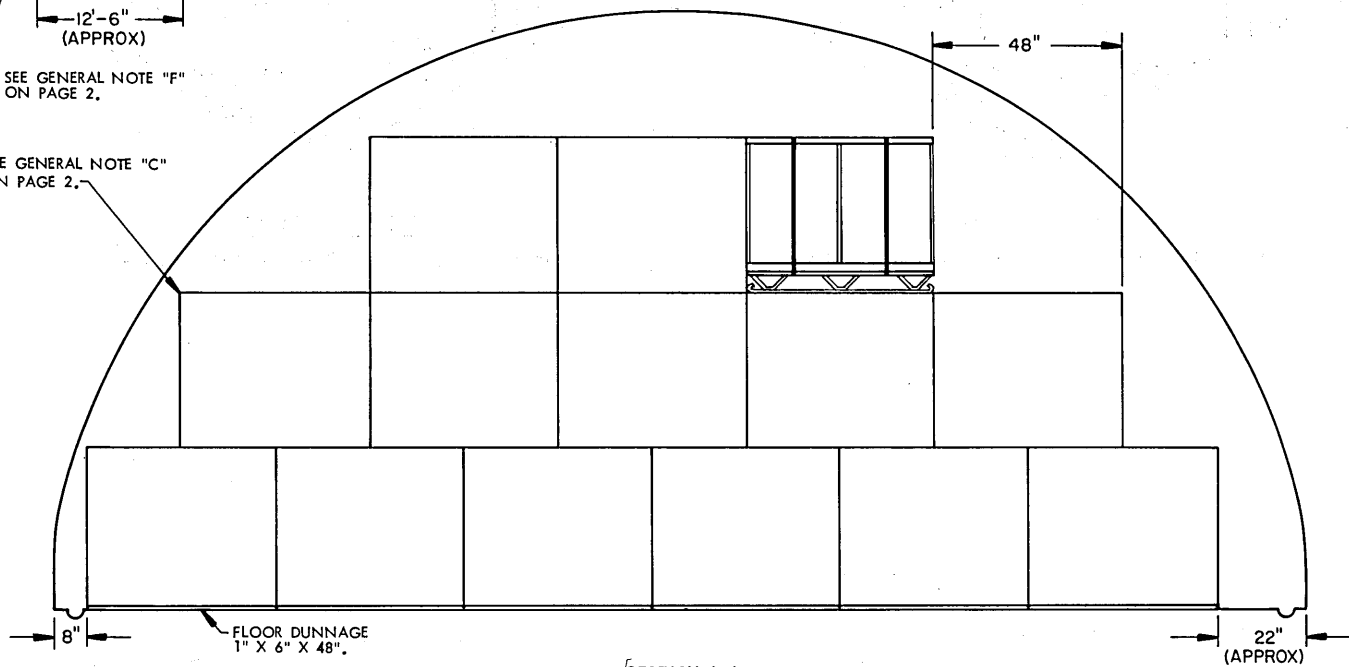


ITEM	QUANTITY
PALLET UNITS	254
DRUMS	1,016

PLAN VIEW
(81'-0" IGLOO)

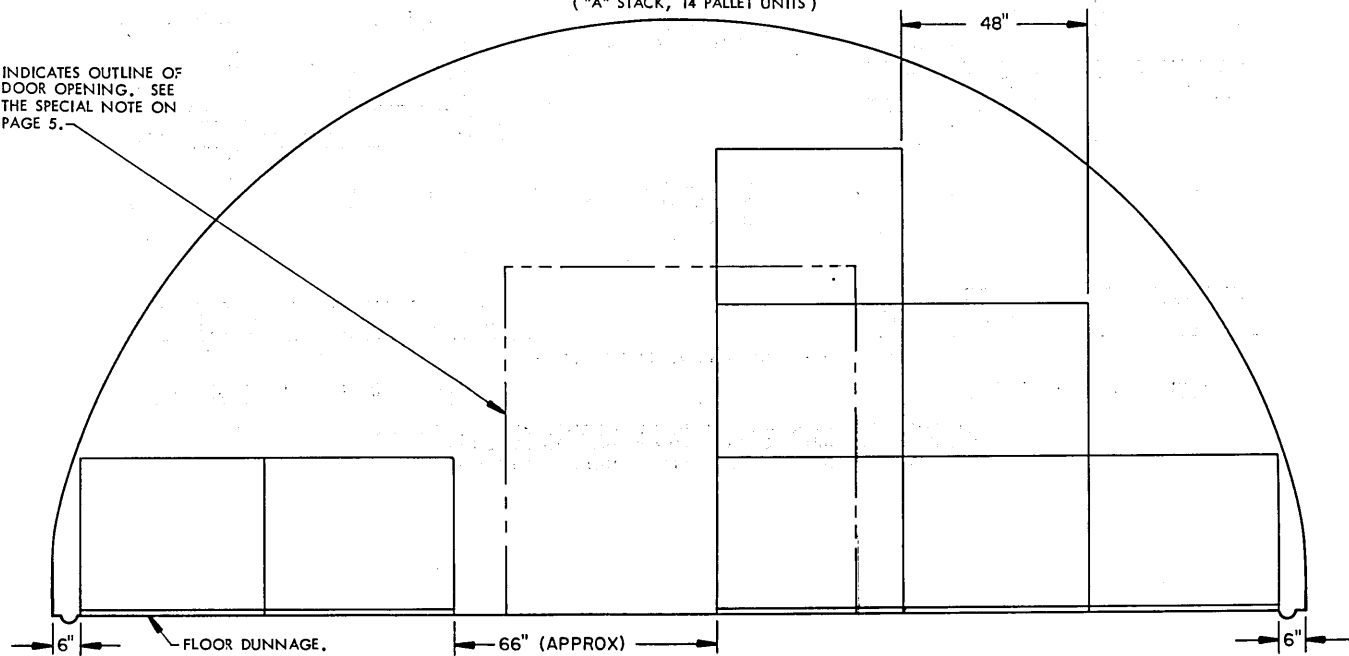
SEE GENERAL NOTE "F" ON PAGE 2.

SEE GENERAL NOTE "C" ON PAGE 2.



SECTION A-A
("A" STACK, 14 PALLET UNITS)

INDICATES OUTLINE OF DOOR OPENING. SEE THE SPECIAL NOTE ON PAGE 5.



SECTION B-B ("C" STACK, 8 PALLET UNITS)

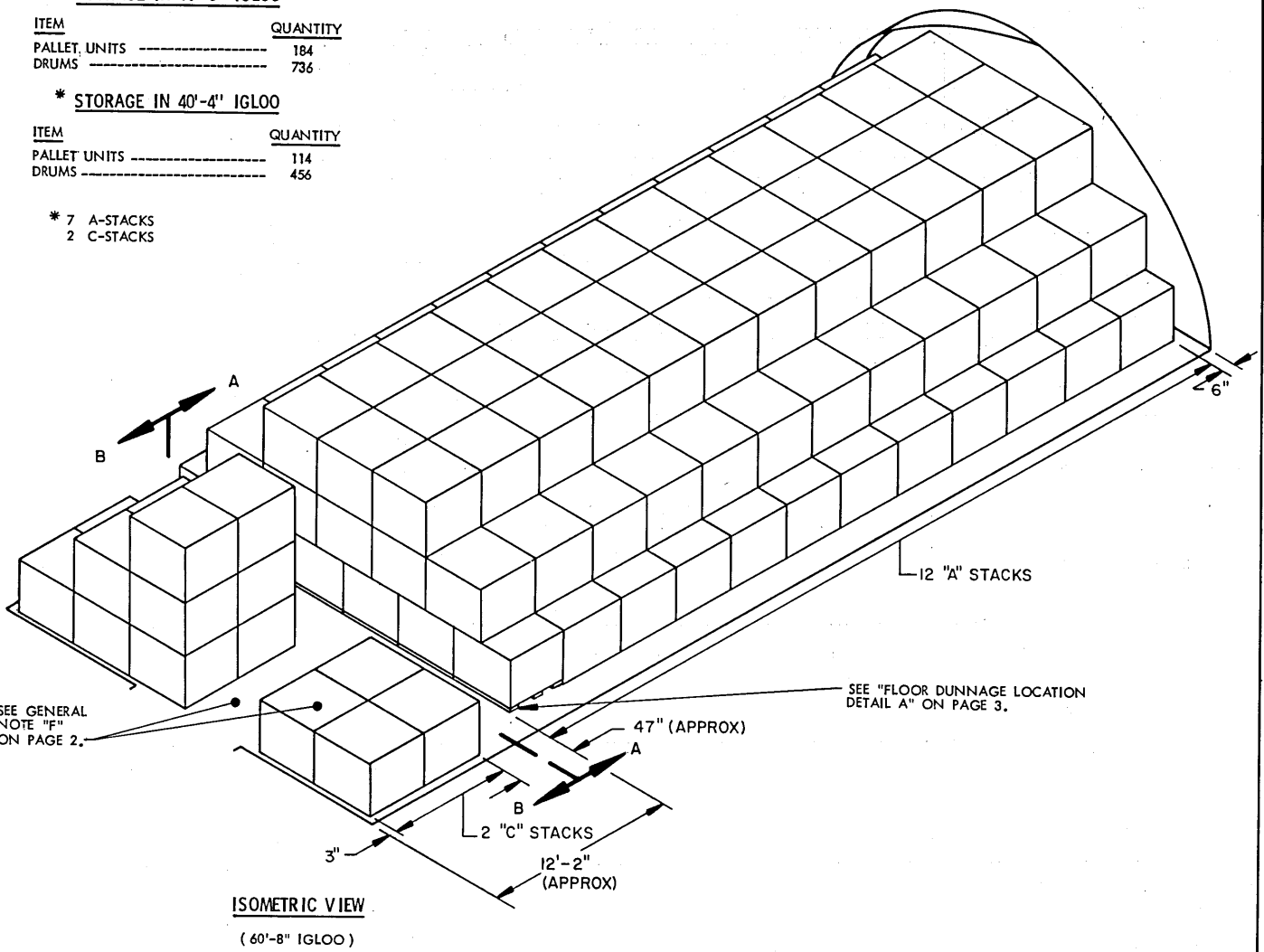
STORAGE IN 60'-8" IGLOO

ITEM	QUANTITY
PALLET UNITS -----	184
DRUMS -----	736

*** STORAGE IN 40'-4" IGLOO**

ITEM	QUANTITY
PALLET UNITS -----	114
DRUMS -----	456

- * 7 A-STACKS
- 2 C-STACKS



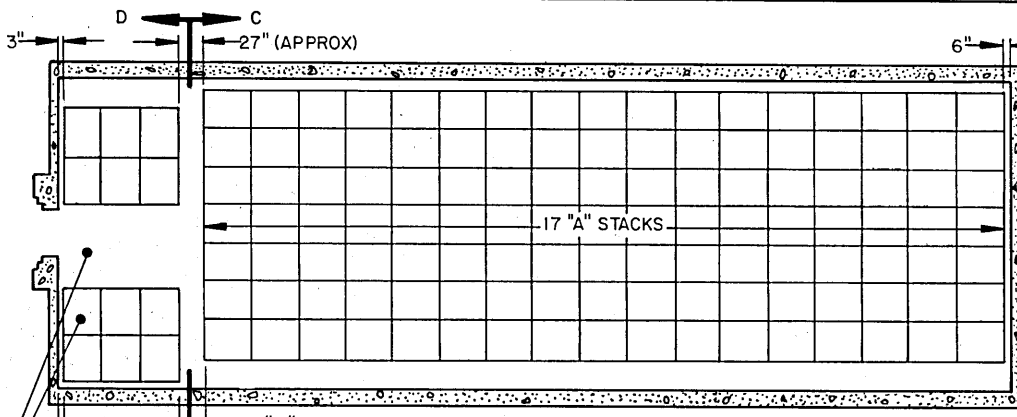
FOR "GENERAL NOTES" AND "MATERIAL SPECIFICATIONS", SEE PAGE 2.

BILL OF MATERIAL (PER STACK) **		
TYPE STACK	1" X 6" DUNNAGE LUMBER	
	LINEAR FEET	BOARD FEET
A	72.00	36.00
C	60.00	30.00

** SEE GENERAL NOTES "E" AND "H" ON PAGE 2.

SPECIAL NOTE:

DUE TO THE SIZE OF PALLETIZED SOLUTION A UNIT, MAGAZINES MUST HAVE A DOOR OPENING OF SUFFICIENT WIDTH TO PERMIT ENTRY INTO A MAGAZINE FOR STORAGE. THE STANDARD 48" WIDE SINGLE DOOR OPENING IS NOT ADEQUATE.



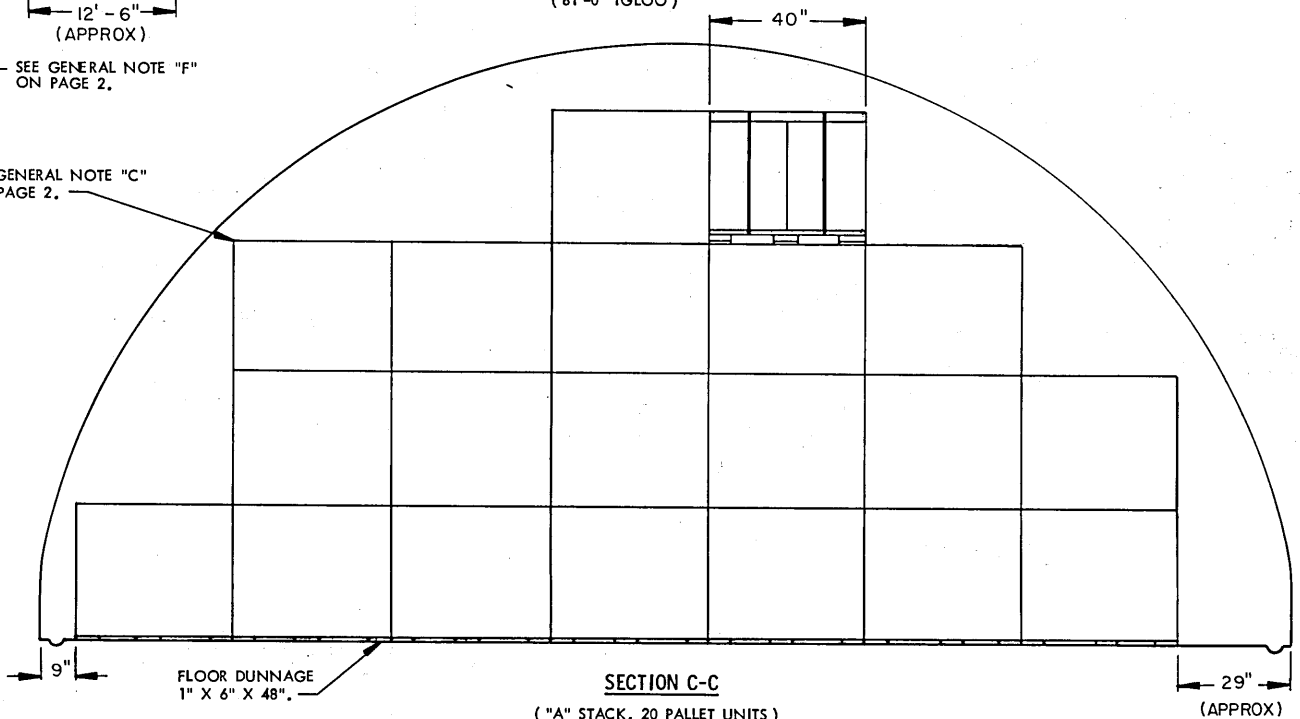
STORAGE IN 81'-0" IGLOO

ITEM	QUANTITY
PALLET UNITS	361
DRUMS	1,444

PLAN VIEW
(81'-0" IGLOO)

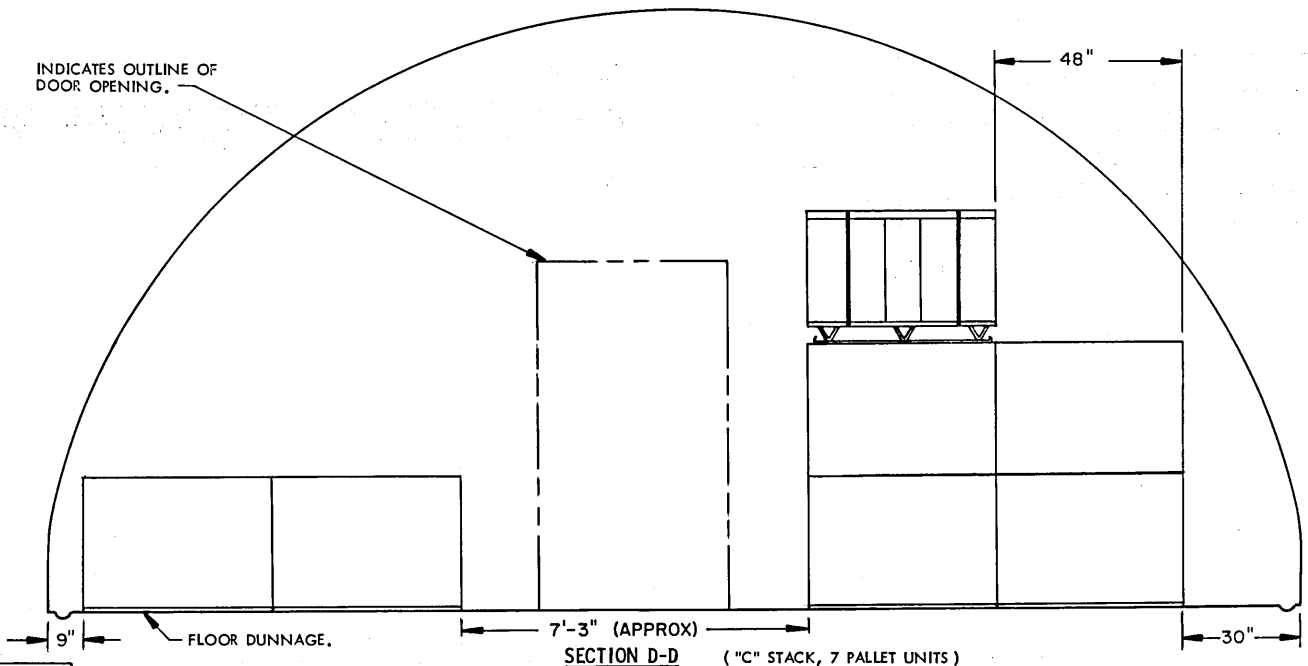
SEE GENERAL NOTE "F"
ON PAGE 2.

SEE GENERAL NOTE "C"
ON PAGE 2.



SECTION C-C
("A" STACK, 20 PALLET UNITS)

INDICATES OUTLINE OF
DOOR OPENING.



SECTION D-D
("C" STACK, 7 PALLET UNITS)

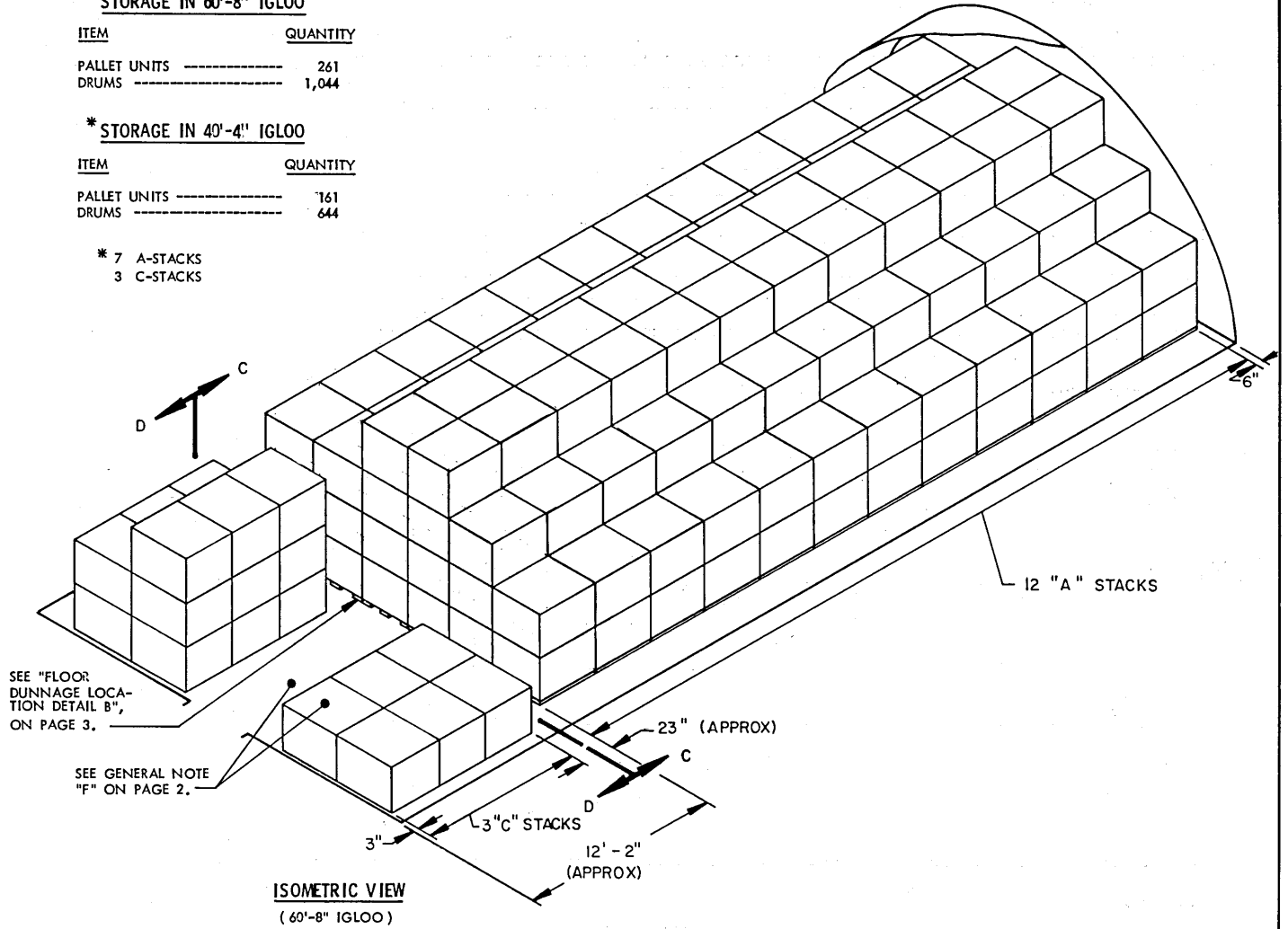
STORAGE IN 60'-8" IGLOO

ITEM	QUANTITY
PALLET UNITS -----	261
DRUMS -----	1,044

*** STORAGE IN 40'-4" IGLOO**

ITEM	QUANTITY
PALLET UNITS -----	161
DRUMS -----	644

- * 7 A-STACKS
- 3 C-STACKS



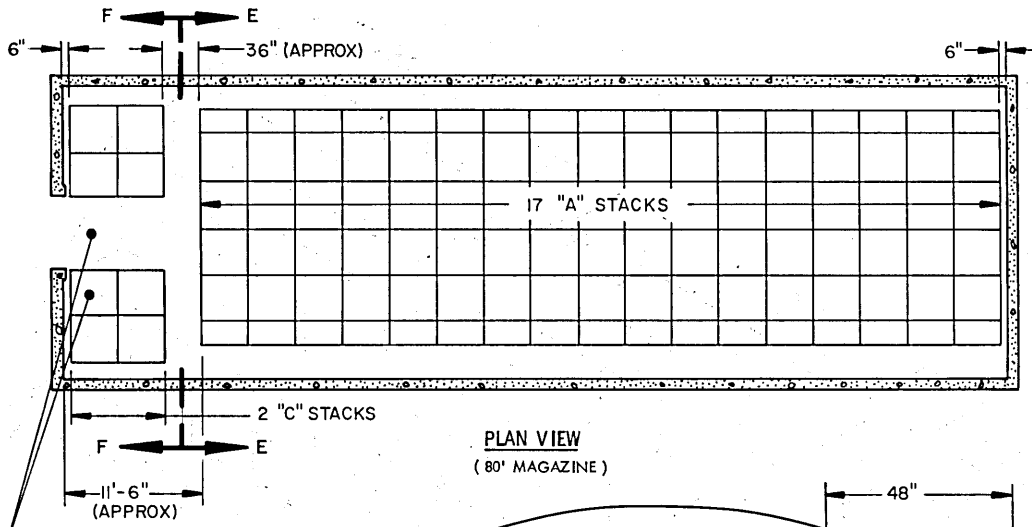
FOR "GENERAL NOTES" AND "MATERIAL SPECIFICATIONS", SEE PAGE 2.

BILL OF MATERIAL (PER STACK) **		
TYPE STACK	1" X 6" DUNNAGE LUMBER	
	LINEAR FEET	BOARD FEET
A	84.00	42.00
C	48.00	24.00

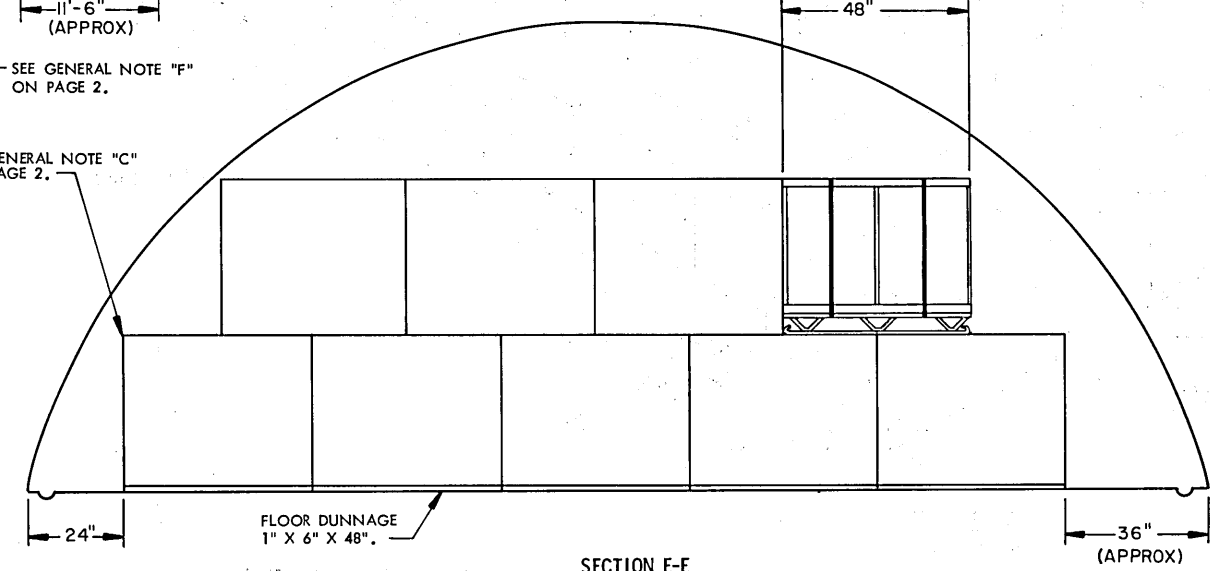
** SEE GENERAL NOTES "E" AND "H" ON PAGE 2.

STORAGE IN 80' MAGAZINE

ITEM	QUANTITY
PALLET UNITS	163
DRUMS	652

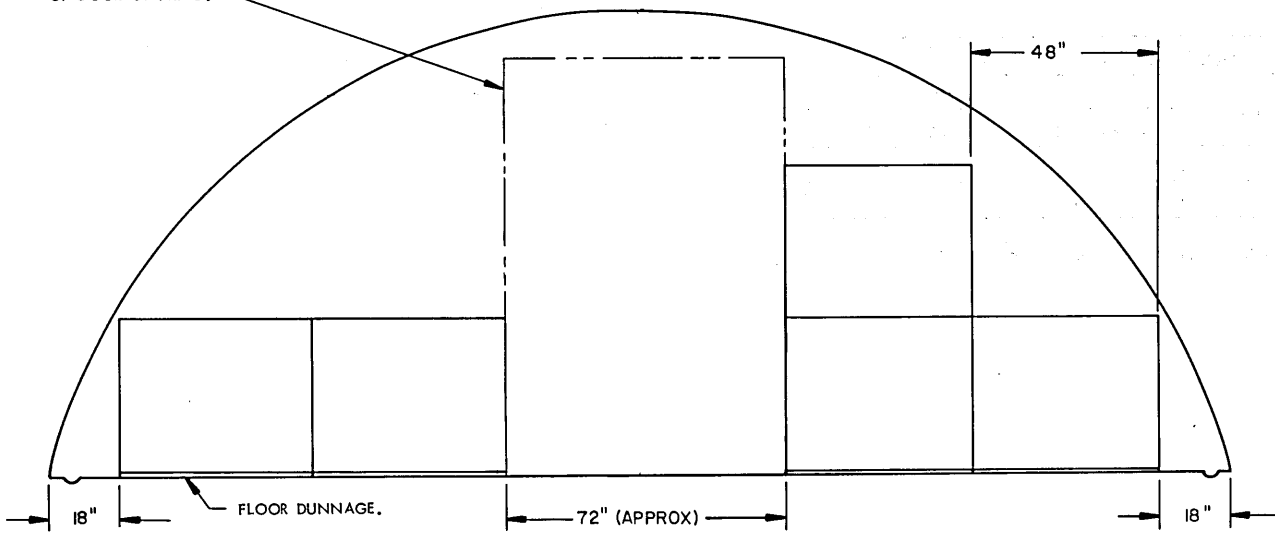


PLAN VIEW
(80' MAGAZINE)



SECTION E-E
("A" STACK, 9 PALLET UNITS)

INDICATES OUTLINE OF DOOR OPENING.

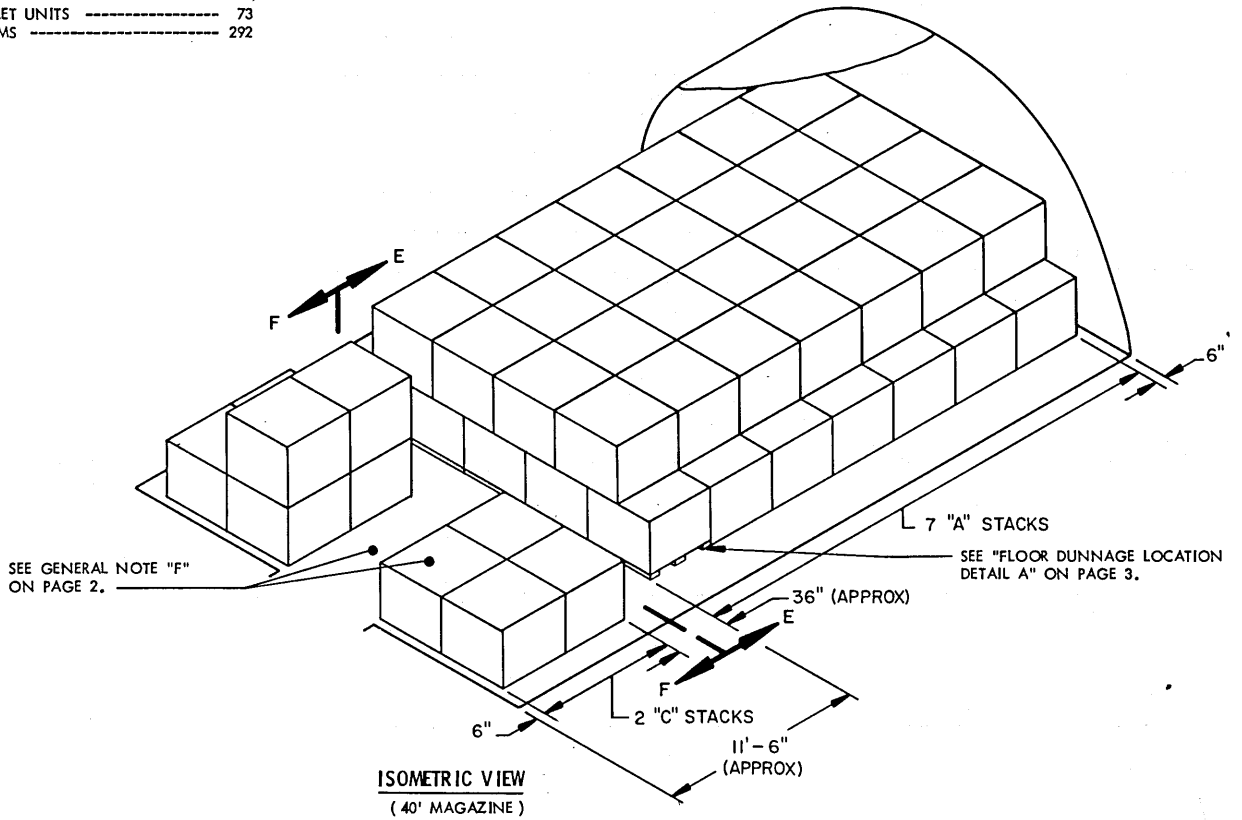


SECTION F-F
("C" STACK, 5 PALLET UNITS)

STORAGE IN 40' MAGAZINE

(10' HIGH)

ITEM	QUANTITY
PALLET UNITS -----	73
DRUMS -----	292



FOR "GENERAL NOTES" AND MATERIAL SPECIFICATIONS", SEE PAGE 2.

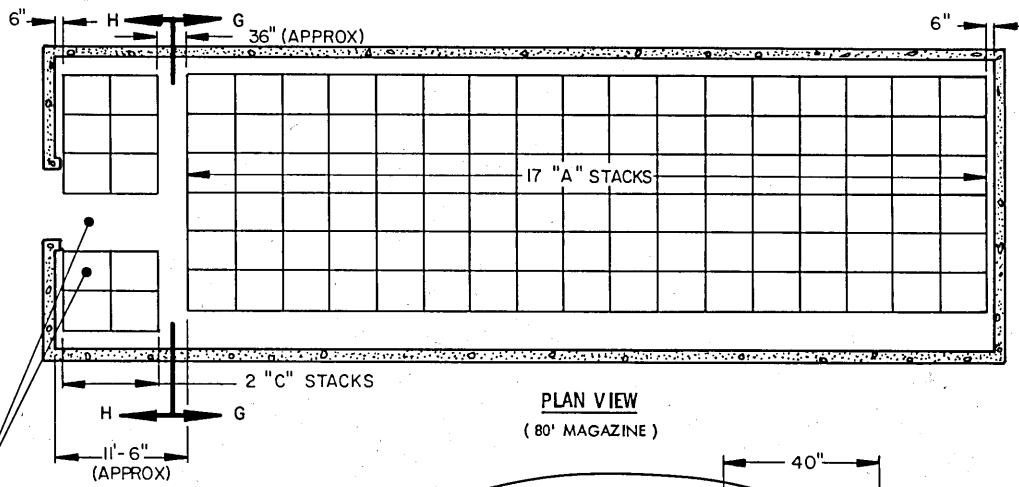
BILL OF MATERIAL (PER STACK) *		
TYPE STACK	1" X 6" DUNNAGE LUMBER	
	LINEAR FEET	BOARD FEET
A	60,00	30,00
C	48,00	24,00

*SEE GENERAL NOTES "E" AND "H" ON PAGE 2.

STORAGE IN 80' MAGAZINE

(10' HIGH)

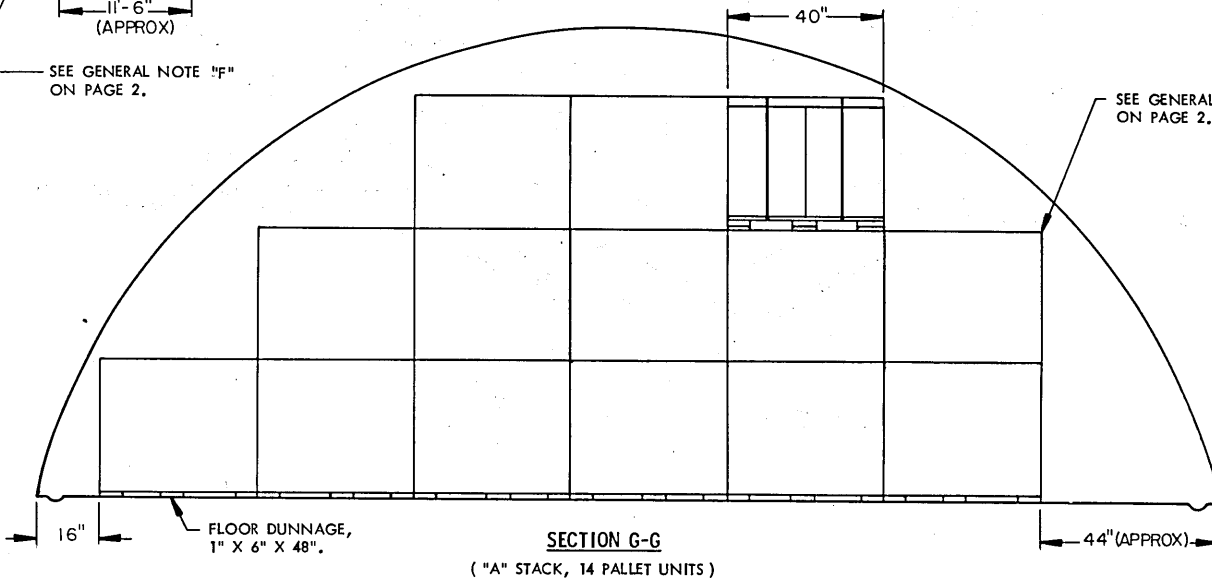
ITEM	QUANTITY
PALLET UNITS -----	254
DRUMS -----	1,016



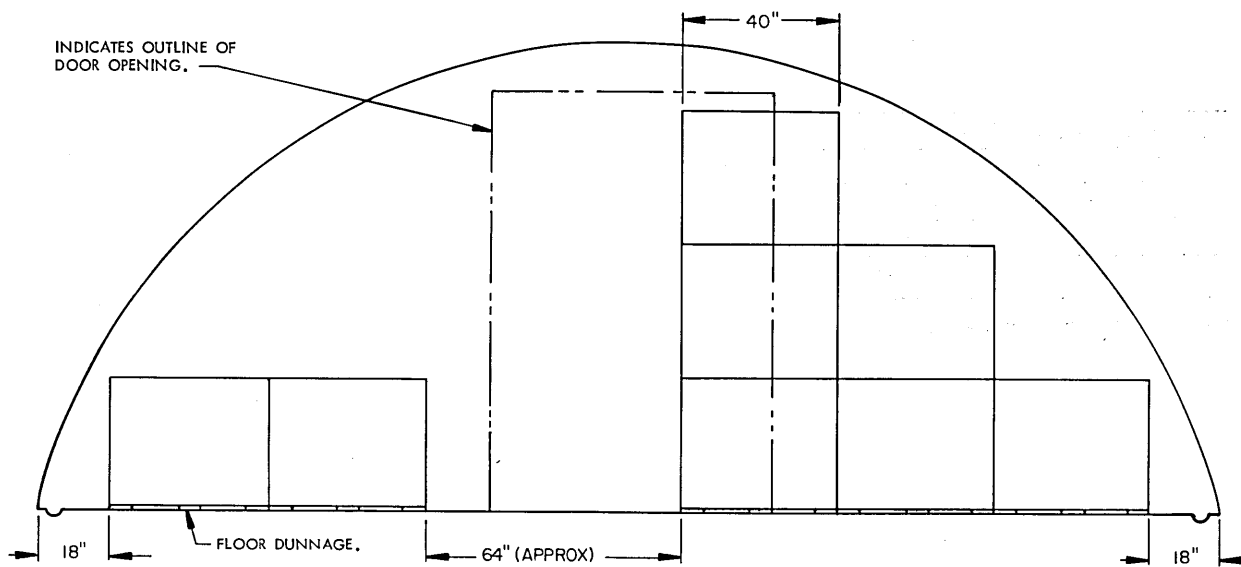
PLAN VIEW
(80' MAGAZINE)

SEE GENERAL NOTE "F" ON PAGE 2.

SEE GENERAL NOTE "C" ON PAGE 2.



SECTION G-G
("A" STACK, 14 PALLET UNITS)

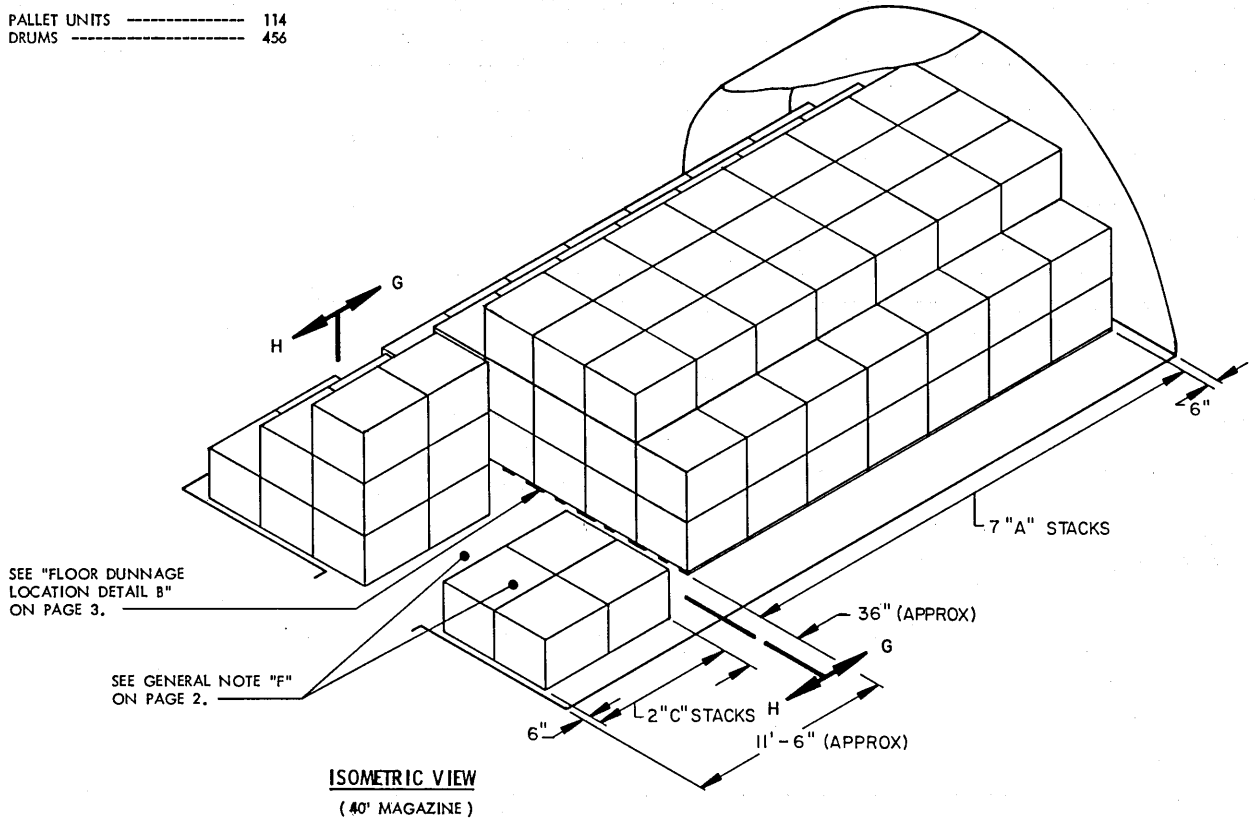


SECTION H-H
("C" STACK, 8 PALLET UNITS)

STORAGE IN 40' MAGAZINE

(10' HIGH)

ITEM	QUANTITY
PALLET UNITS -----	114
DRUMS -----	456



FOR "GENERAL NOTES" AND "MATERIAL SPECIFICATIONS" SEE PAGE 2.

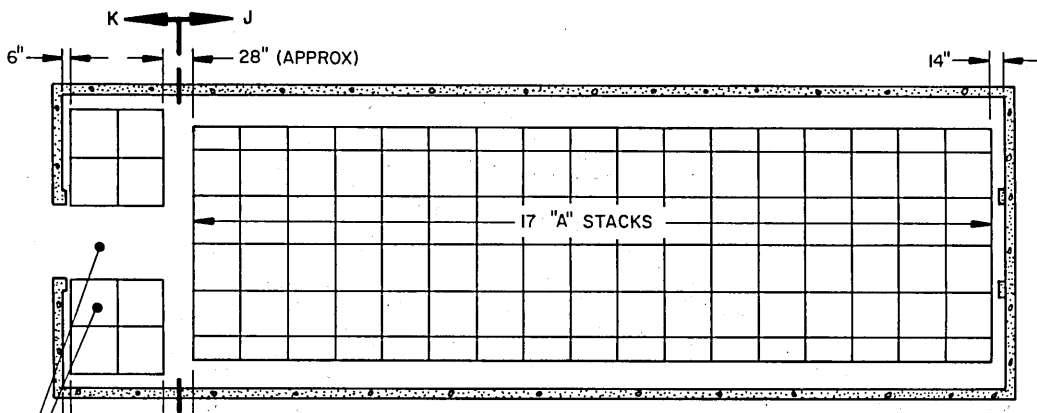
BILL OF MATERIAL (PER STACK)*		
TYPE STACK	1" X 6" DUNNAGE LUMBER	
	LINEAR FEET	BOARD FEET
A	72.00	36.00
C	60.00	30.00

*SEE GENERAL NOTES "E" AND "H" ON PAGE 2.

STORAGE IN 80' MAGAZINE

(11' HIGH)

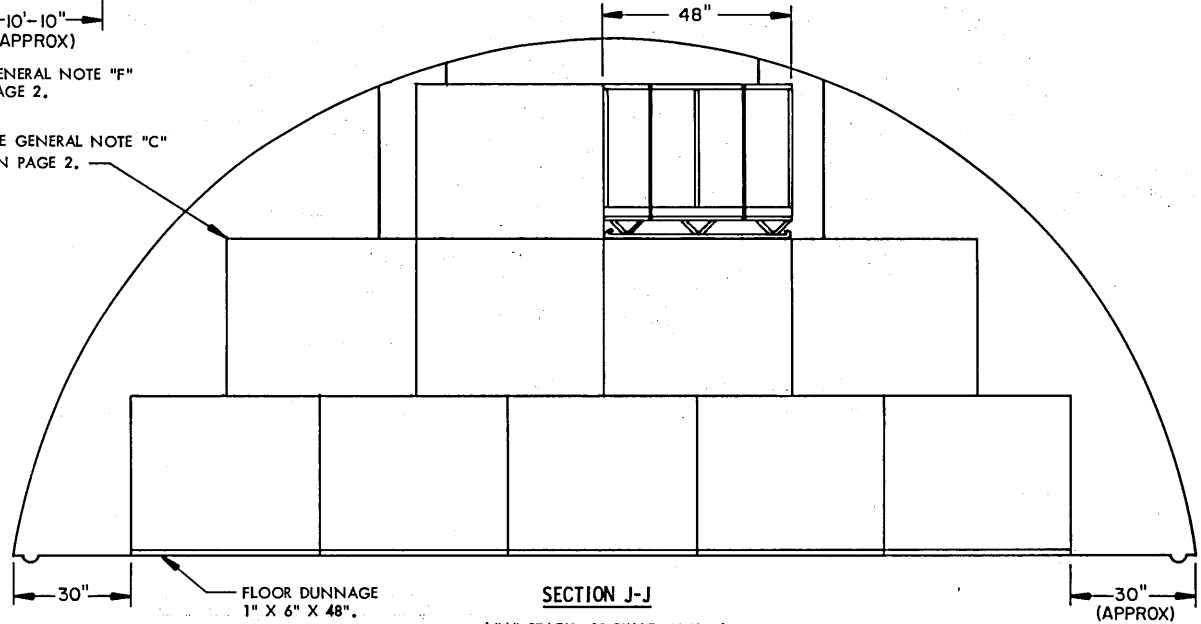
ITEM	QUANTITY
PALLET UNITS	187
DRUMS	748



PLAN VIEW
(80' MAGAZINE)

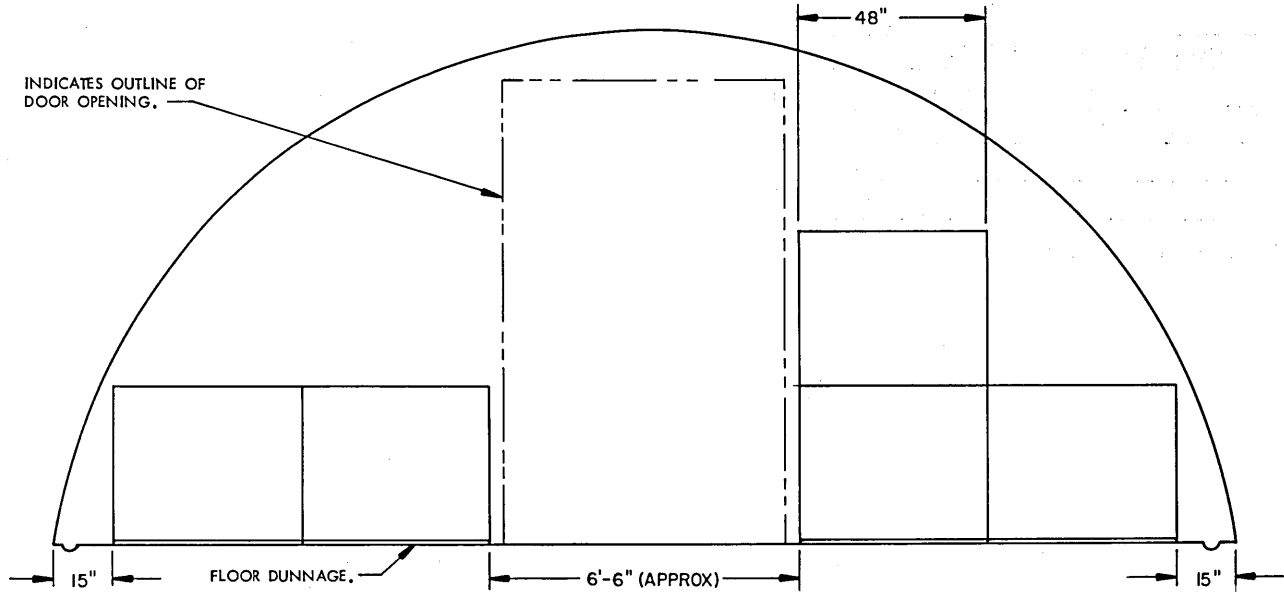
SEE GENERAL NOTE "F" ON PAGE 2.

SEE GENERAL NOTE "C" ON PAGE 2.



SECTION J-J
("A" STACK, 11 PALLET UNITS)

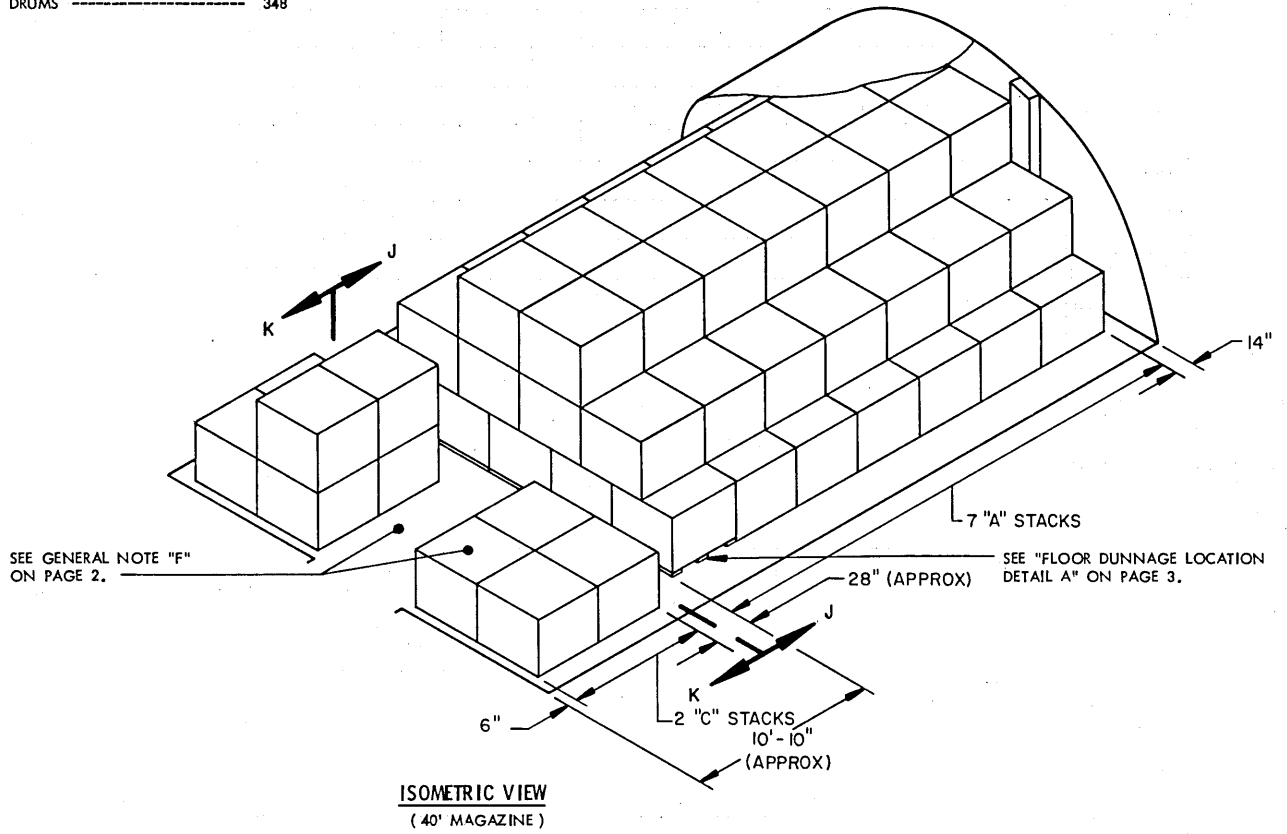
INDICATES OUTLINE OF DOOR OPENING.



SECTION K-K
("C" STACK, 5 PALLET UNITS)

STORAGE IN 40' MAGAZINE
(11' HIGH)

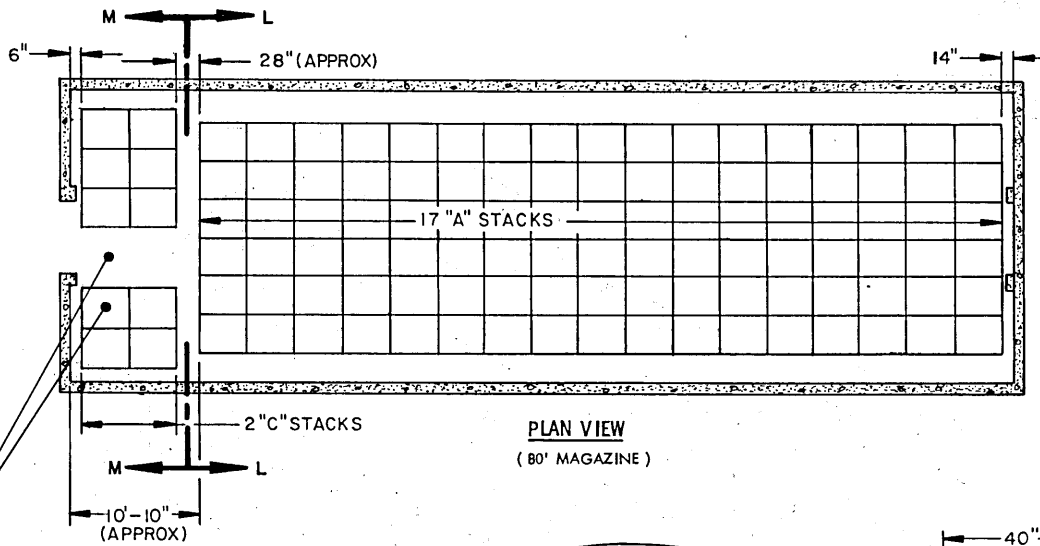
ITEM	QUANTITY
PALLET UNITS -----	87
DRUMS -----	348



FOR "GENERAL NOTES" AND "MATERIAL SPECIFICATIONS", SEE PAGE 2.

BILL OF MATERIAL (PER STACK) *		
TYPE STACK	1" X 6" DUNNAGE LUMBER	
	LINEAR FEET	BOARD FEET
A	60.00	30.00
C	48.00	24.00

* SEE GENERAL NOTES "E" AND "H" ON PAGE 2.



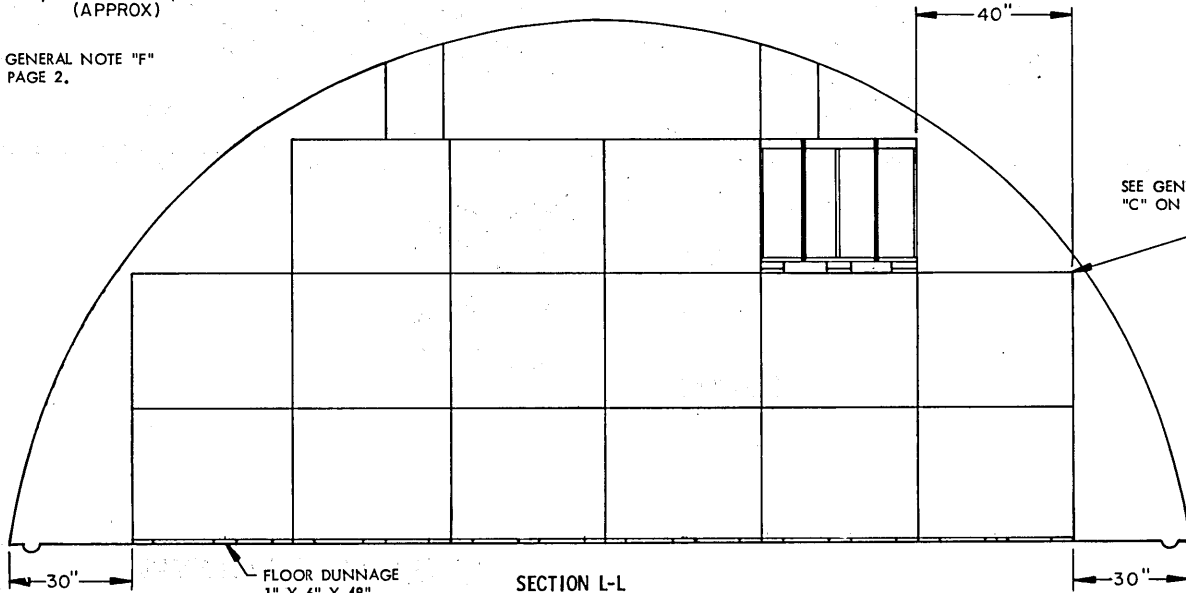
STORAGE IN 80' MAGAZINE

(11' HIGH)

ITEM	QUANTITY
PALLET UNITS -----	288
DRUMS -----	1,152

PLAN VIEW
(80' MAGAZINE)

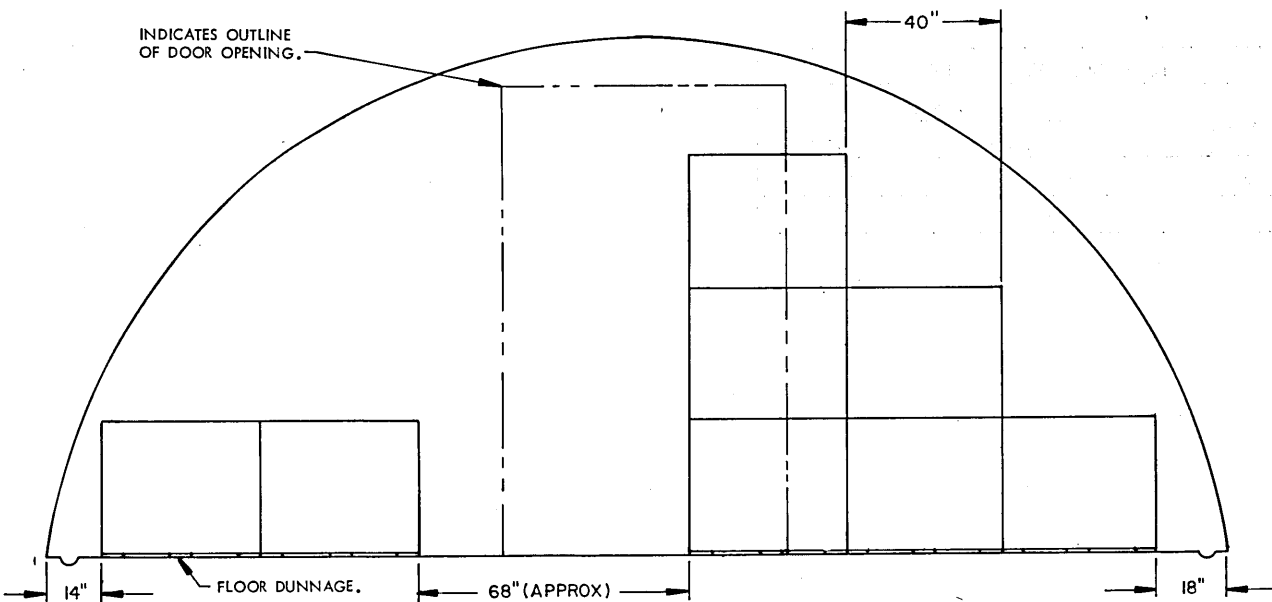
SEE GENERAL NOTE "F" ON PAGE 2.



SEE GENERAL NOTE "C" ON PAGE 2.

SECTION L-L
("A" STACK, 16 PALLET UNITS)

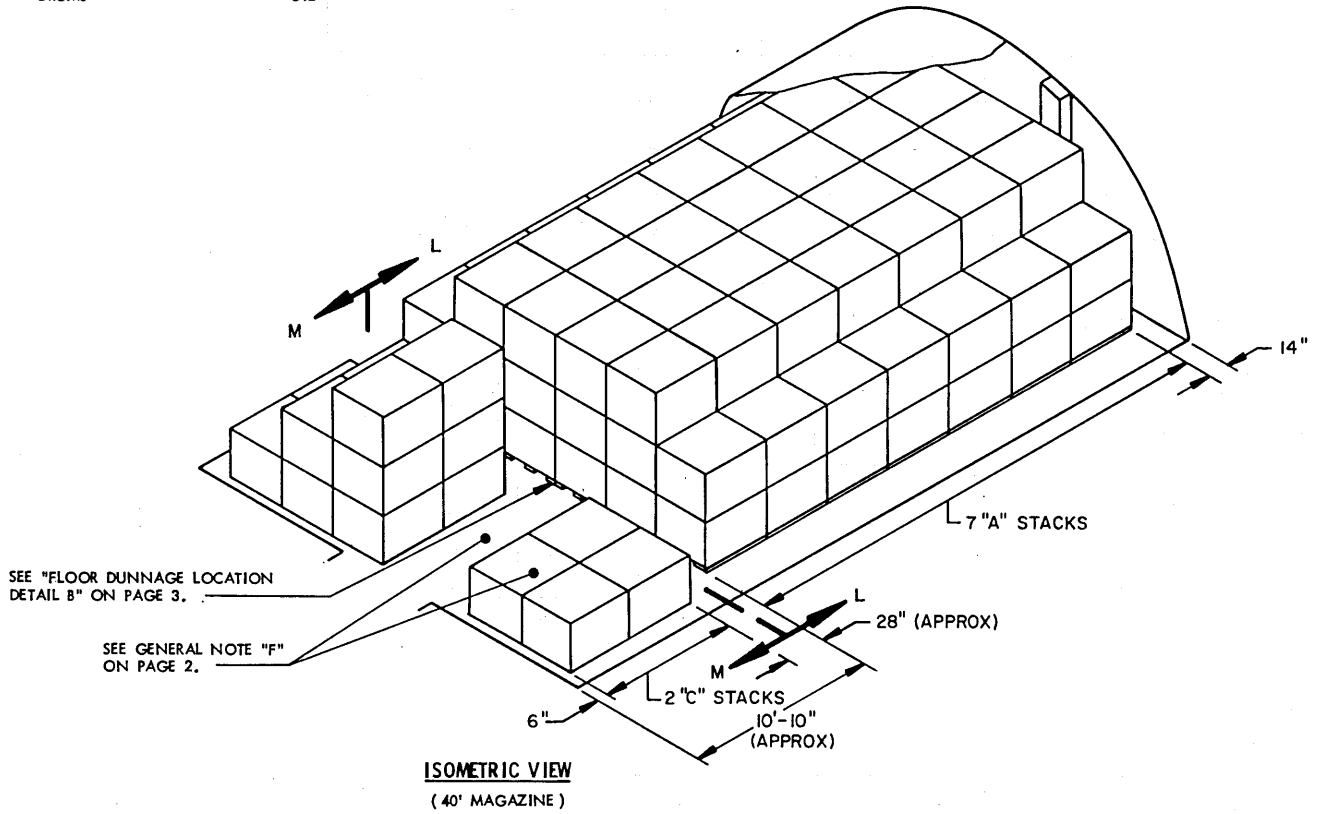
INDICATES OUTLINE OF DOOR OPENING.



SECTION M-M
("C" STACK, 8 PALLET UNITS)

STORAGE IN 40' MAGAZINE
(11' HIGH)

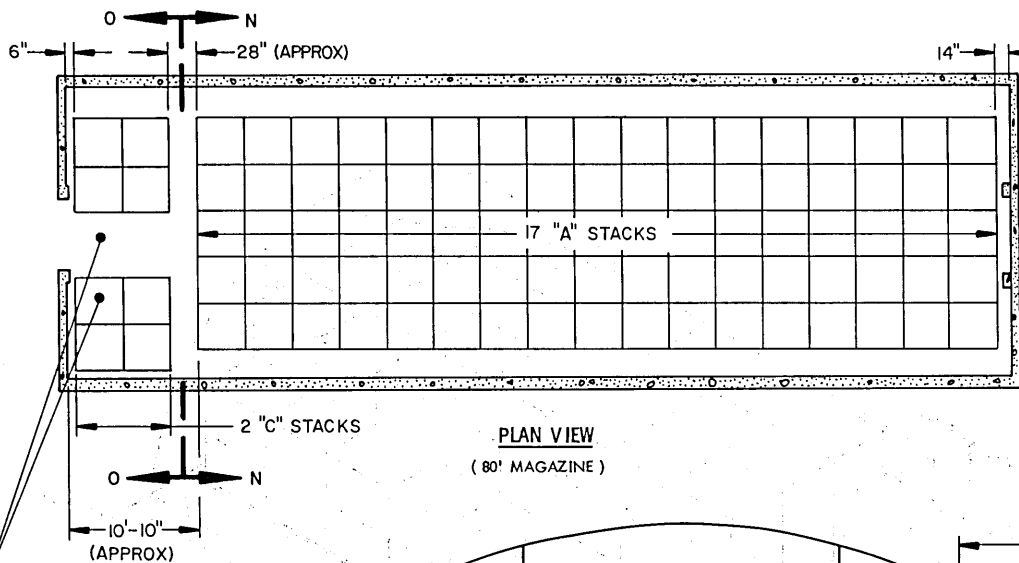
ITEM	QUANTITY
PALLET UNITS -----	128
DRUMS -----	512



**FOR "GENERAL NOTES" AND "MATERIAL
SPECIFICATIONS", SEE PAGE 2.**

BILL OF MATERIAL (PER STACK) *		
TYPE STACK	1" X 6" DUNNAGE LUMBER	
	LINEAR FEET	BOARD FEET
A	72.00	36.00
C	60.00	30.00

* SEE GENERAL NOTES "E" AND "H" ON PAGE 2.

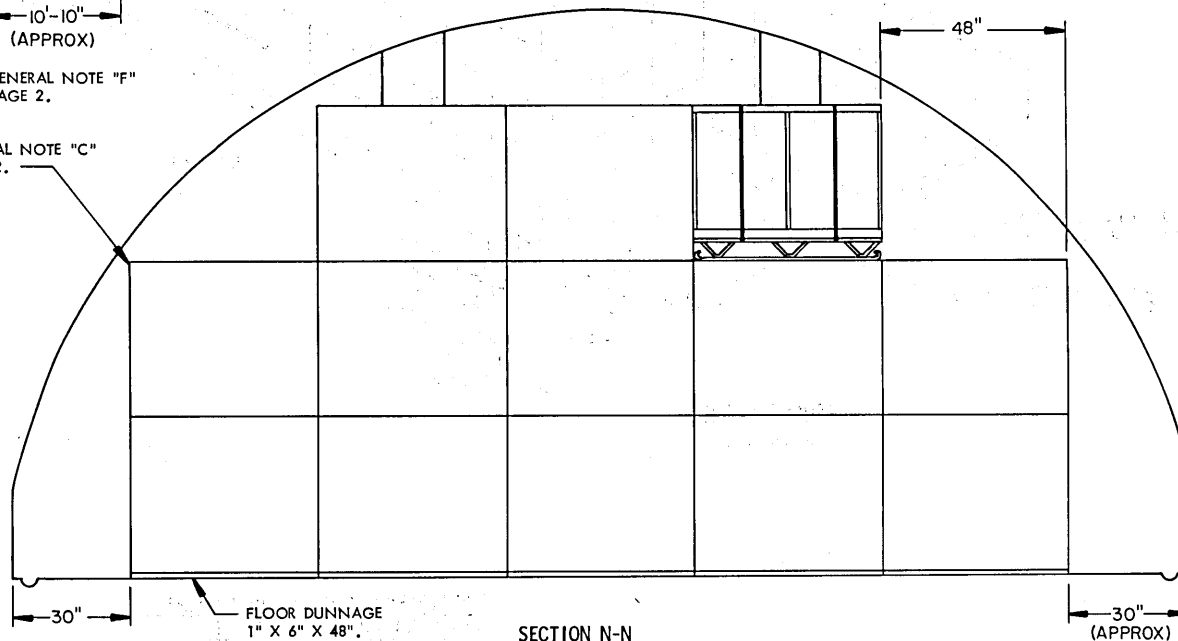


STORAGE IN 80' MAGAZINE
(12' HIGH)

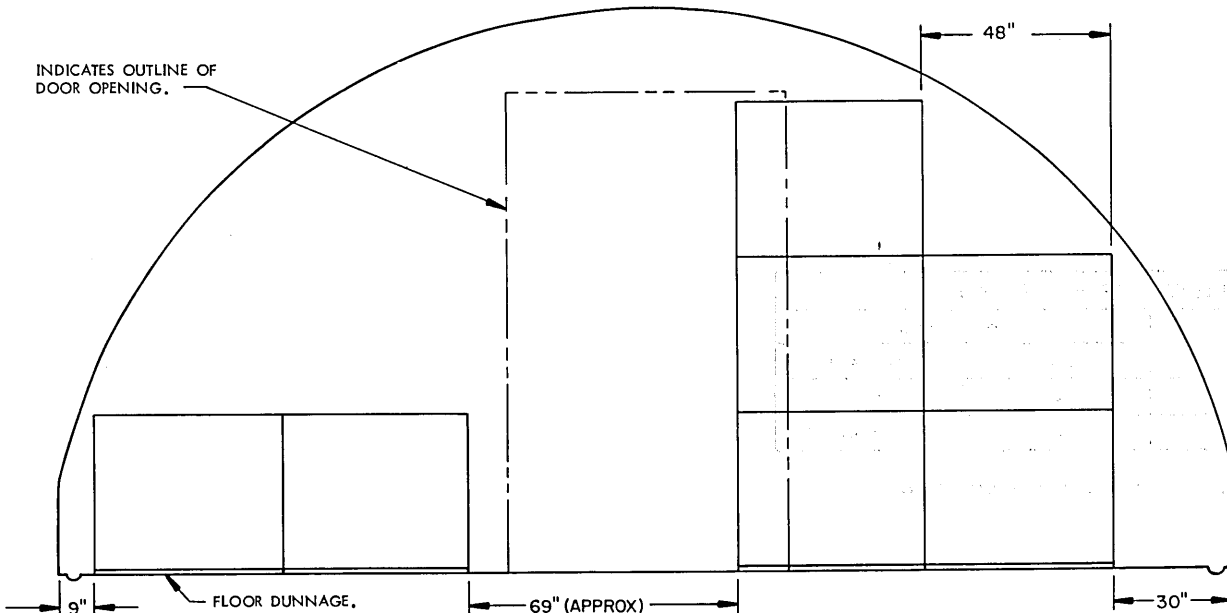
ITEM	QUANTITY
PALLET UNITS	235
DRUMS	940

SEE GENERAL NOTE "F"
ON PAGE 2.

SEE GENERAL NOTE "C"
ON PAGE 2.

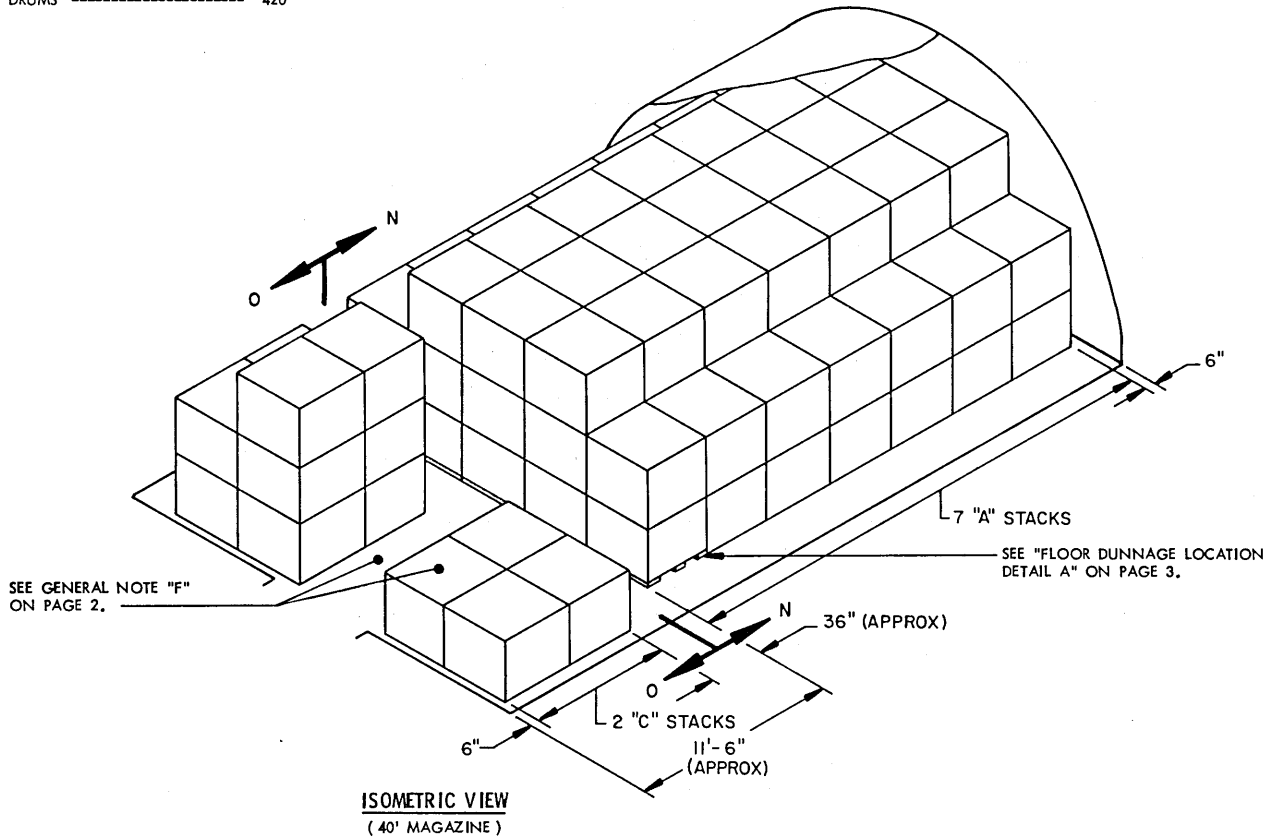


INDICATES OUTLINE OF
DOOR OPENING.



STORAGE IN 40' MAGAZINE
(12' HIGH)

ITEM	QUANTITY
PALLET UNITS -----	105
DRUMS -----	420



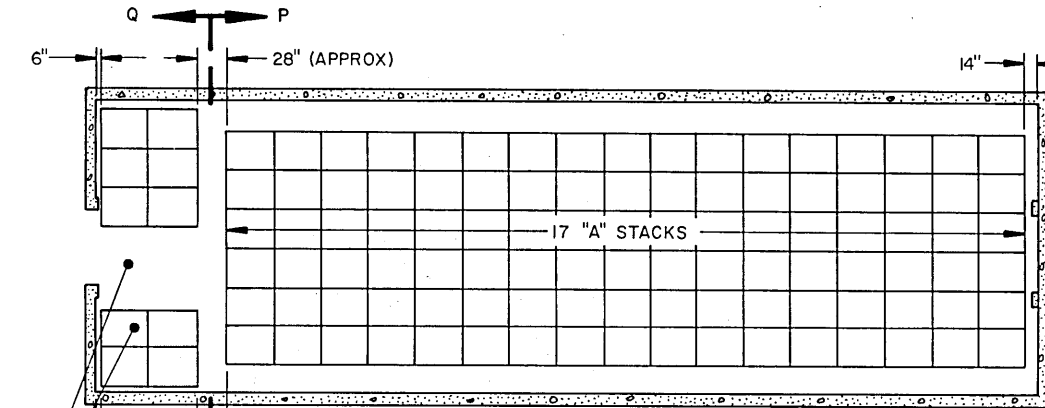
FOR "GENERAL NOTES" AND "MATERIAL SPECIFICATIONS", SEE PAGE 2.

BILL OF MATERIAL (PER STACK) *		
TYPE STACK	1" X 6" DUNNAGE LUMBER	
	LINEAR FEET	BOARD FEET
A	60,00	30,00
C	48,00	24,00

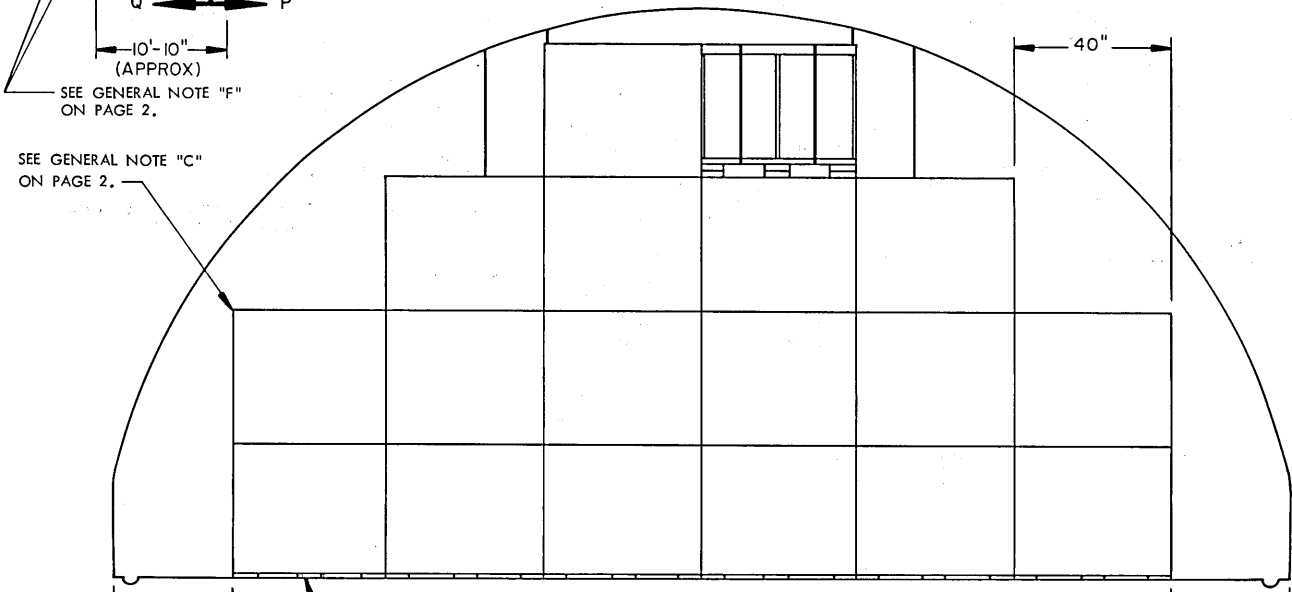
* SEE GENERAL NOTES "E" AND "H" ON PAGE 2.

STORAGE IN 80' MAGAZINE

ITEM (12' HIGH)	QUANTITY
PALLET UNITS -----	324
DRUMS -----	1,296



PLAN VIEW
(80' MAGAZINE)

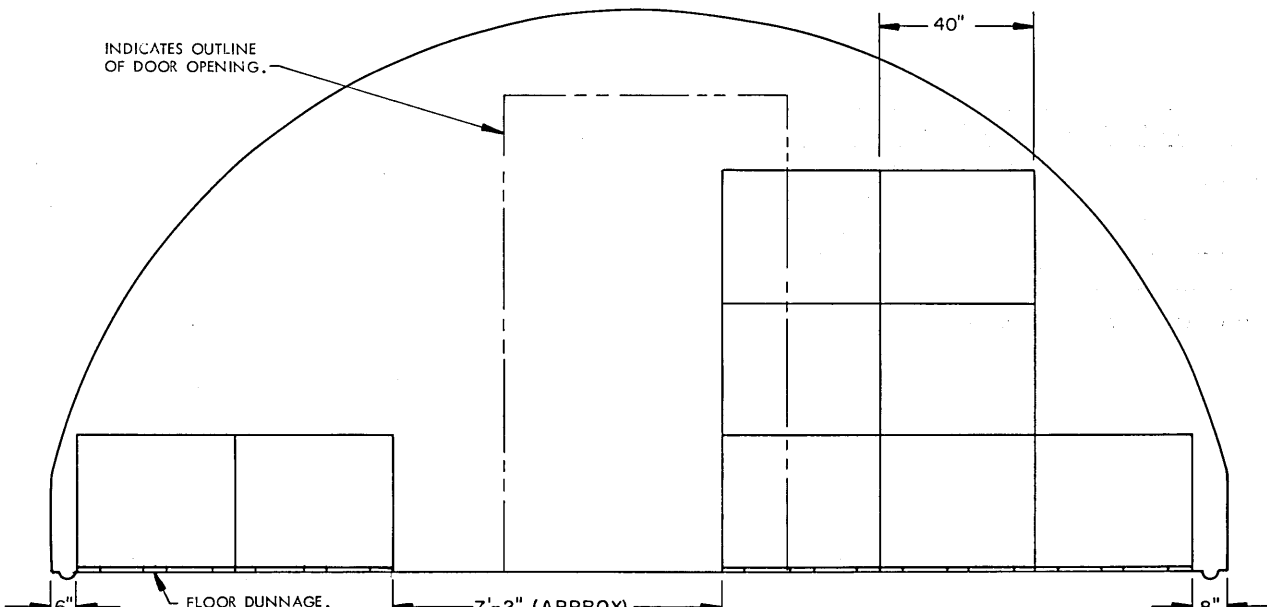


SECTION P-P

("A" STACK, 18 PALLET UNITS)

FLOOR DUNNAGE.
1" X 6" X 48"

INDICATES OUTLINE OF DOOR OPENING.



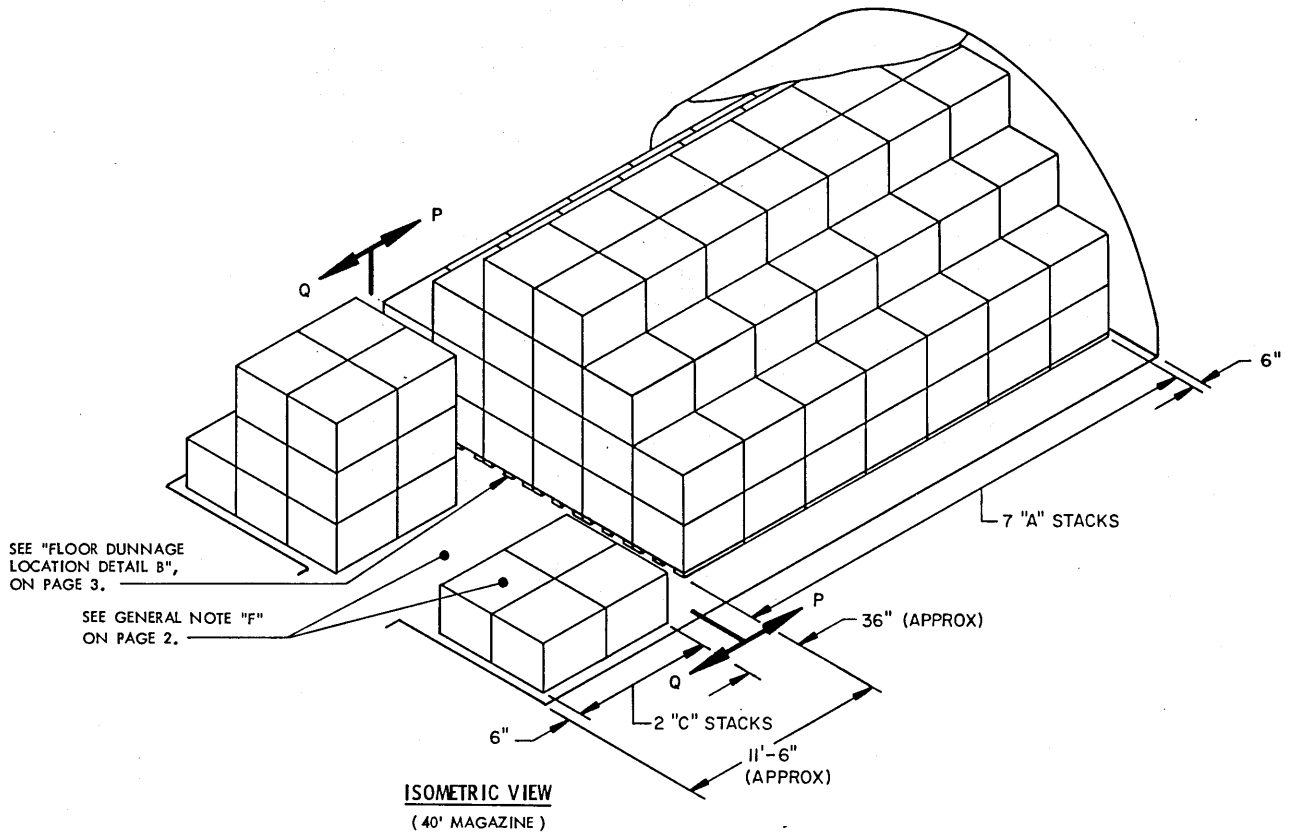
SECTION Q-Q ("C" STACK, 9 PALLET UNITS)

FLOOR DUNNAGE.

STORAGE IN 40' MAGAZINE

(12' HIGH)

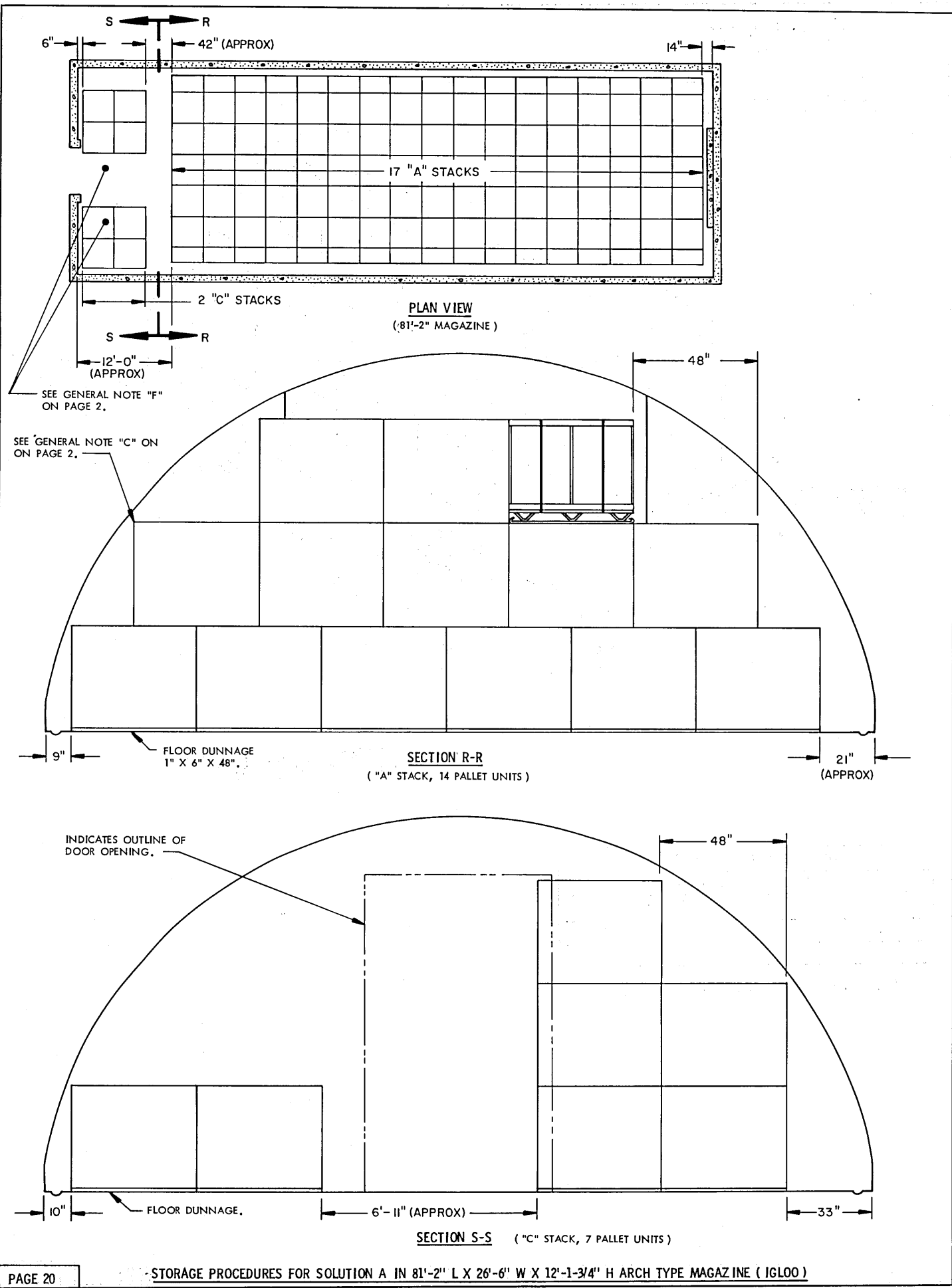
ITEM	QUANTITY
PALLET UNITS -----	144
DRUMS -----	576



FOR "GENERAL NOTES" AND "MATERIAL SPECIFICATIONS", SEE PAGE 2.

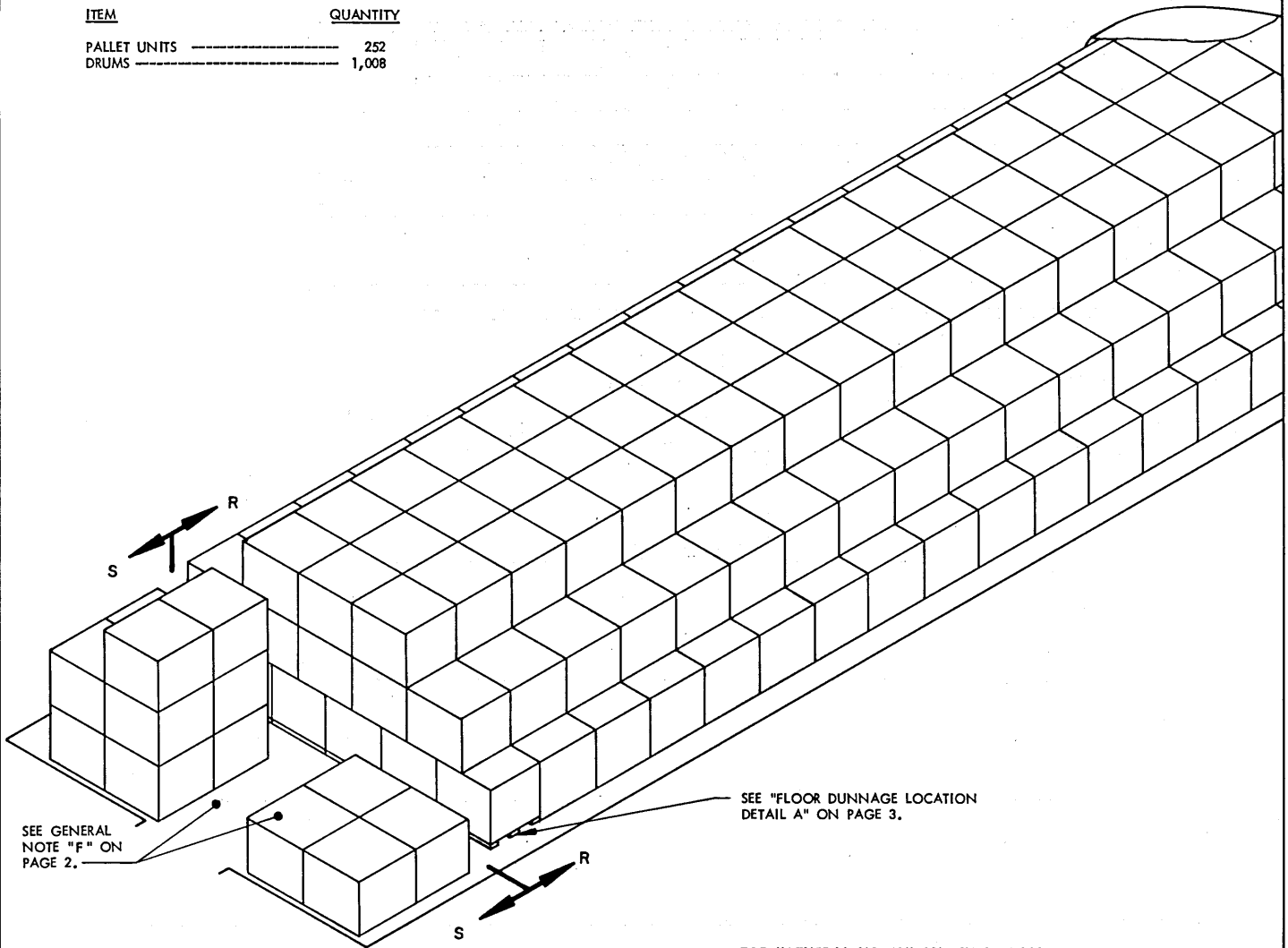
BILL OF MATERIAL (PER STACK) *		
TYPE STACK	1" X 6" DUNNAGE LUMBER	
	LINEAR FEET	BOARD FEET
A	72.00	36.00
C	60.00	30.00

* SEE GENERAL NOTES "E" AND "H" ON PAGE 2.



STORAGE IN 81'-2" MAGAZINE

ITEM	QUANTITY
PALLET UNITS -----	252
DRUMS -----	1,008

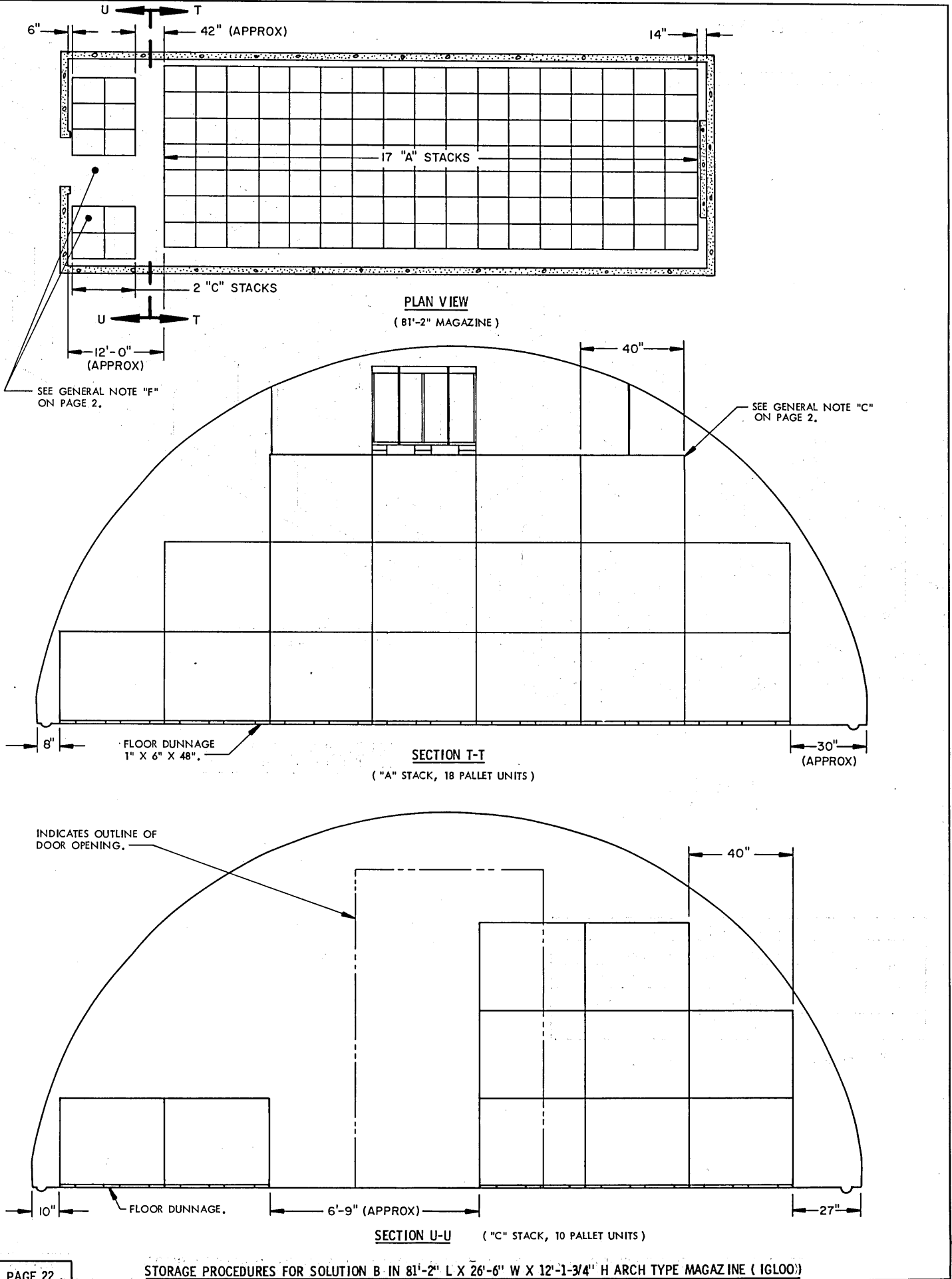


ISOMETRIC VIEW

(81'-2" MAGAZINE)

BILL OF MATERIAL (PER STACK) *		
TYPE STACK	1" X 6" DUNNAGE LUMBER	
	LINEAR FEET	BOARD FEET
A	72.00	36.00
C	48.00	24.00

* SEE GENERAL NOTES "E" AND "H" ON PAGE 2.



SEE GENERAL NOTE "F" ON PAGE 2.

SEE GENERAL NOTE "C" ON PAGE 2.

8"

FLOOR DUNNAGE
1" X 6" X 48"

SECTION T-T
("A" STACK, 18 PALLET UNITS)

30" (APPROX)

INDICATES OUTLINE OF DOOR OPENING.

10"

FLOOR DUNNAGE.

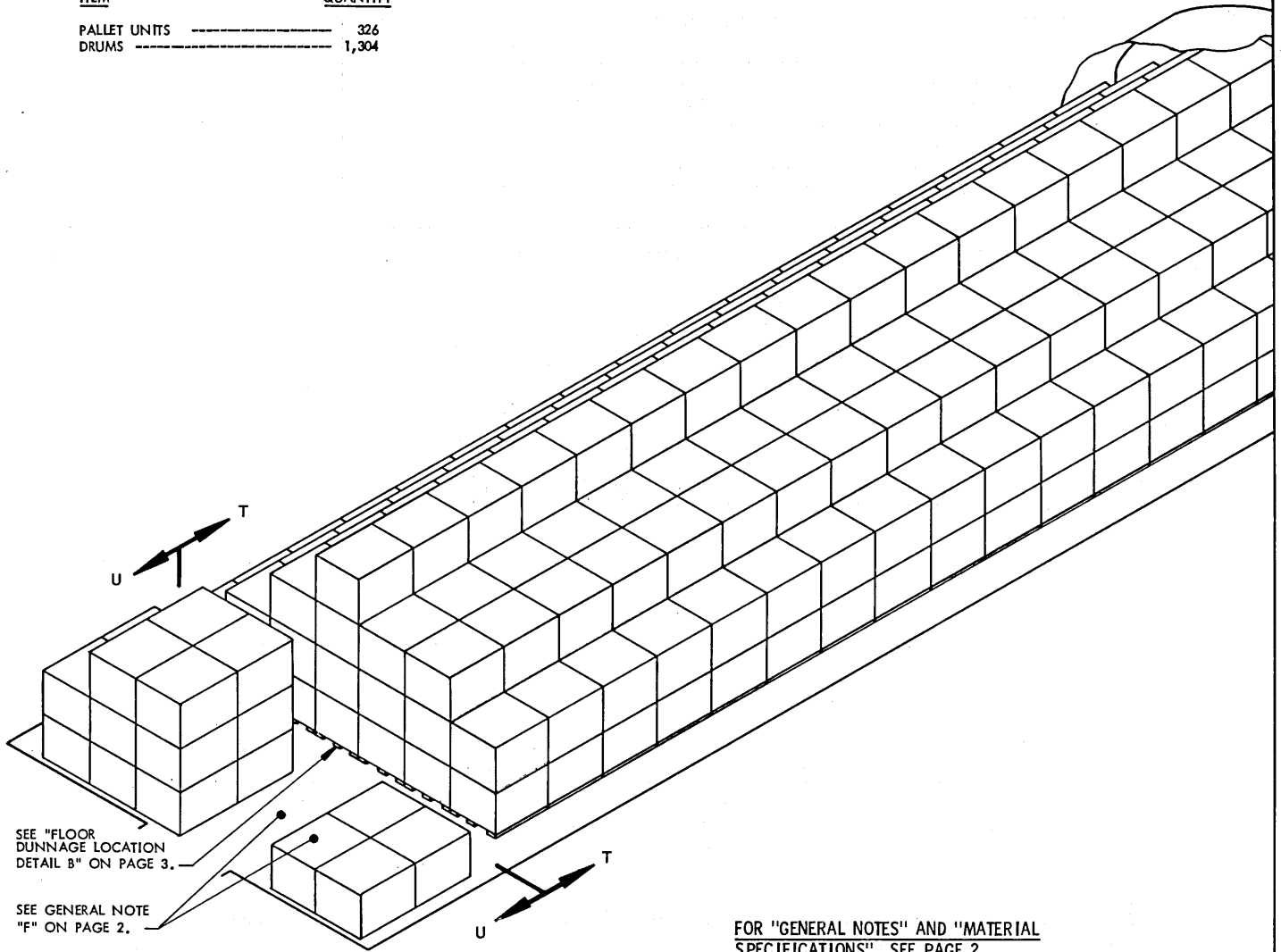
6'-9" (APPROX)

SECTION U-U ("C" STACK, 10 PALLET UNITS)

27"

STORAGE IN 81'-2" MAGAZINE

ITEM	QUANTITY
PALLET UNITS -----	326
DRUMS -----	1,304



SEE "FLOOR DUNNAGE LOCATION DETAIL B" ON PAGE 3.

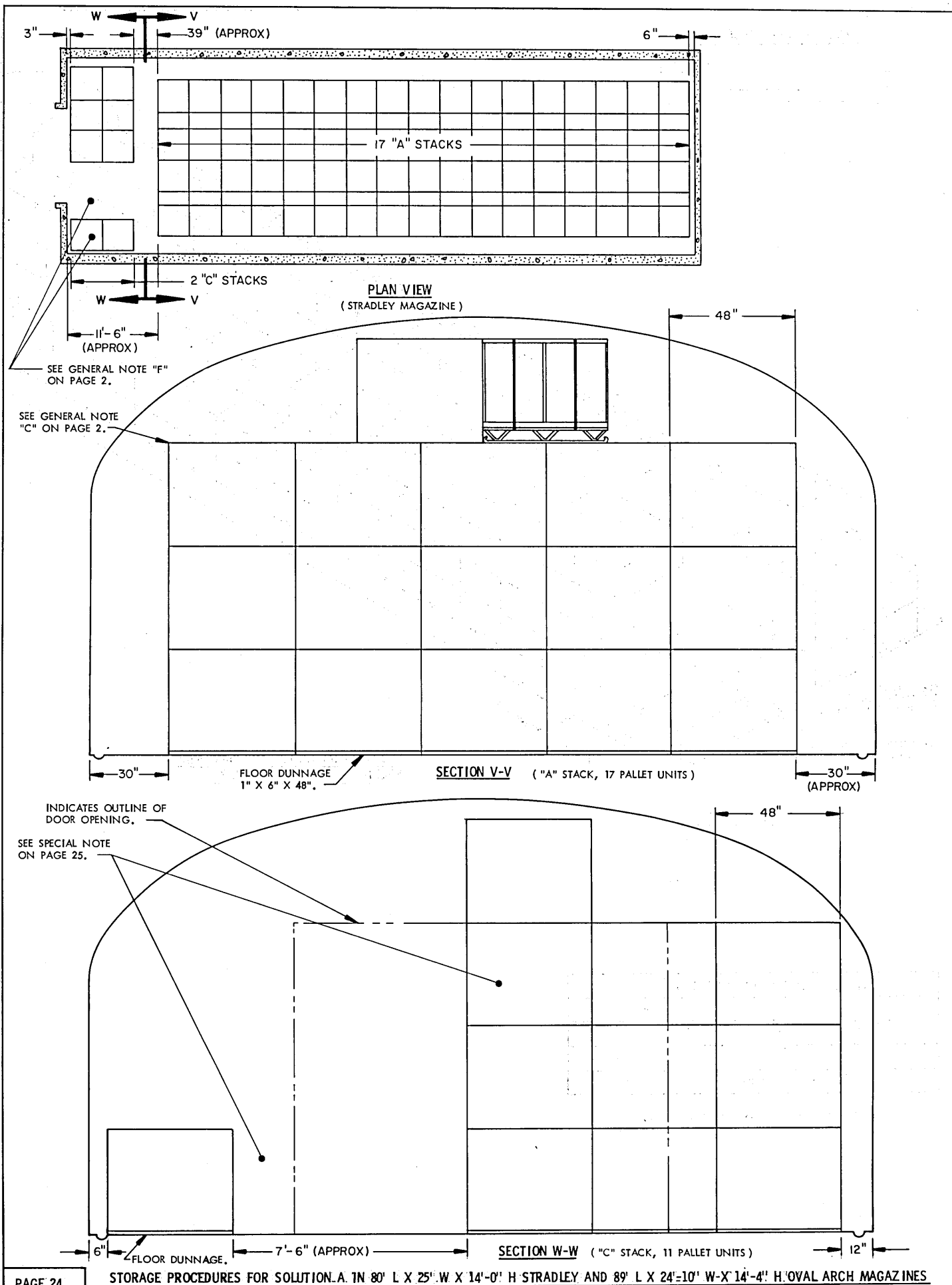
SEE GENERAL NOTE "F" ON PAGE 2.

FOR "GENERAL NOTES" AND "MATERIAL SPECIFICATIONS", SEE PAGE 2.

ISOMETRIC VIEW
(81'-2" MAGAZINE)

BILL OF MATERIAL (PER STACK) *		
TYPE STACK	1" X 6" DUNNAGE LUMBER	
	LINEAR FEET	BOARD FEET
A	84.00	42.00
C	60.00	30.00

*SEE GENERAL NOTES "E" AND "H" ON PAGE 2.



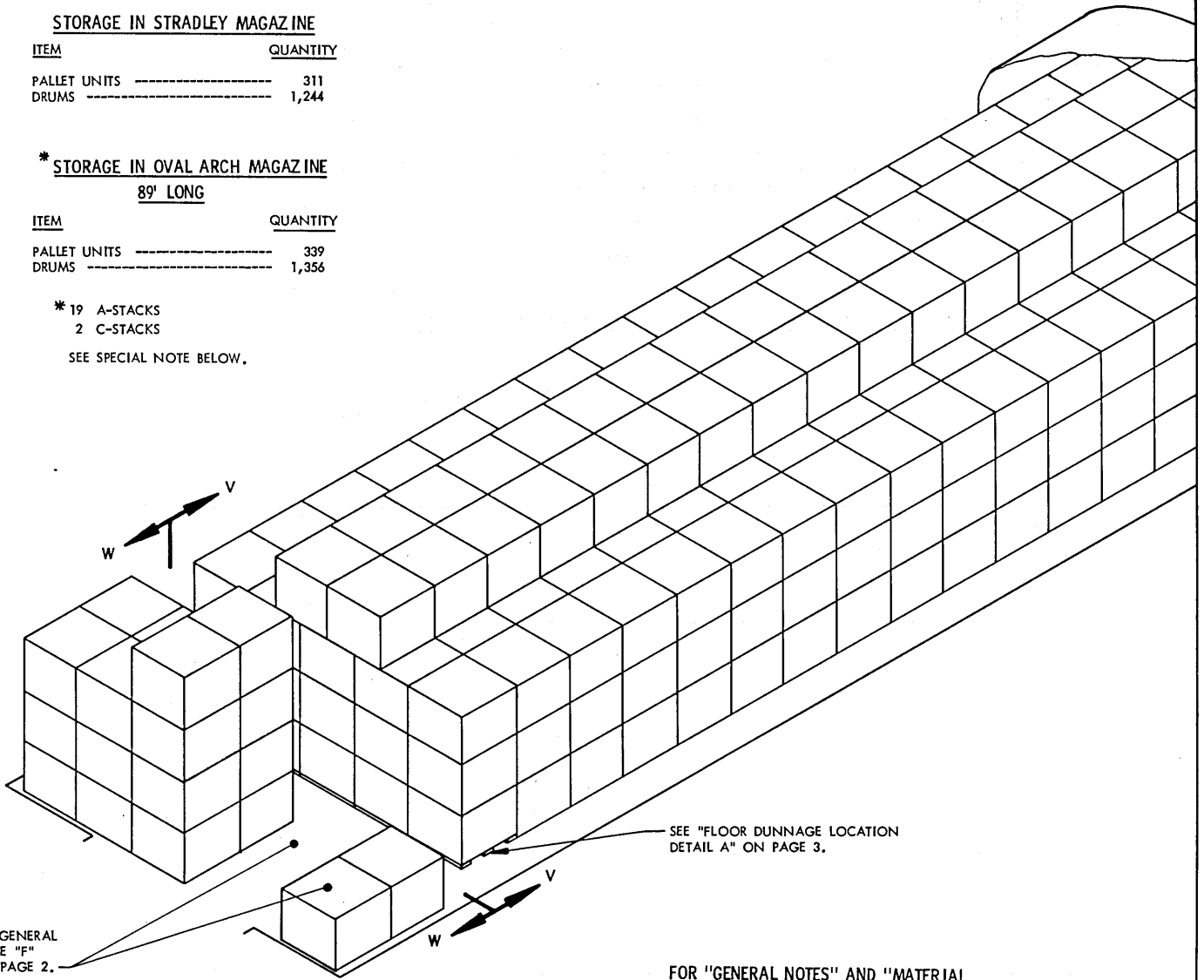
STORAGE IN STRADLEY MAGAZINE

ITEM	QUANTITY
PALLET UNITS -----	311
DRUMS -----	1,244

* STORAGE IN OVAL ARCH MAGAZINE
89' LONG

ITEM	QUANTITY
PALLET UNITS -----	339
DRUMS -----	1,356

* 19 A-STACKS
2 C-STACKS
SEE SPECIAL NOTE BELOW.



SEE GENERAL NOTE "F" ON PAGE 2.

SEE "FLOOR DUNNAGE LOCATION DETAIL A" ON PAGE 3.

FOR "GENERAL NOTES" AND "MATERIAL SPECIFICATIONS", SEE PAGE 2.

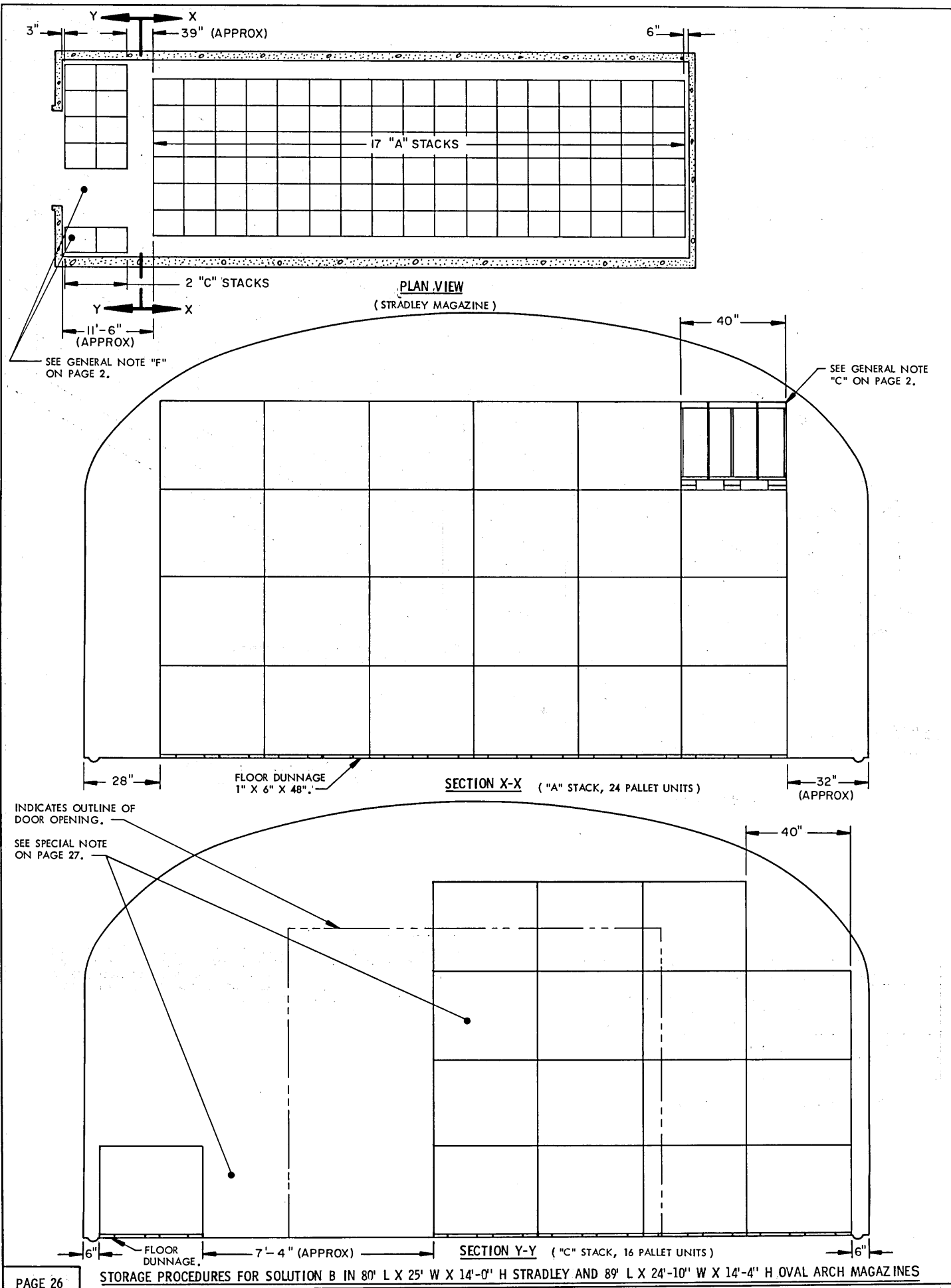
ISOMETRIC VIEW
(STRADLEY MAGAZINE)

<u>BILL OF MATERIAL (PER STACK)</u> **		
TYPE STACK	1" X 6" DUNNAGE LUMBER	
	LINEAR FEET	BOARD FEET
A	60.00	30.00
C	48.00	24.00

** SEE GENERAL NOTES "E" AND "H" ON PAGE 2.

SPECIAL NOTE:

FOR STORAGE IN OVAL ARCH MAGAZINES, THE ONE (1) ROW OF PALLET UNITS ADJACENT TO THE OPERATING AISLE AS SHOWN IN "SECTION W-W" MUST BE OMITTED AND ONE (1) PALLET UNIT CAN BE ADDED ON THE OPPOSITE SIDE OF THE OPERATING AISLE BECAUSE OF THE RELATIVELY NARROW DOOR OPENING. THIS WILL REDUCE THE "C" STACKS TO 8 UNITS EACH.



STORAGE IN STRADLEY MAGAZINE

ITEM	QUANTITY
PALLET UNITS -----	440
DRUMS -----	1,760

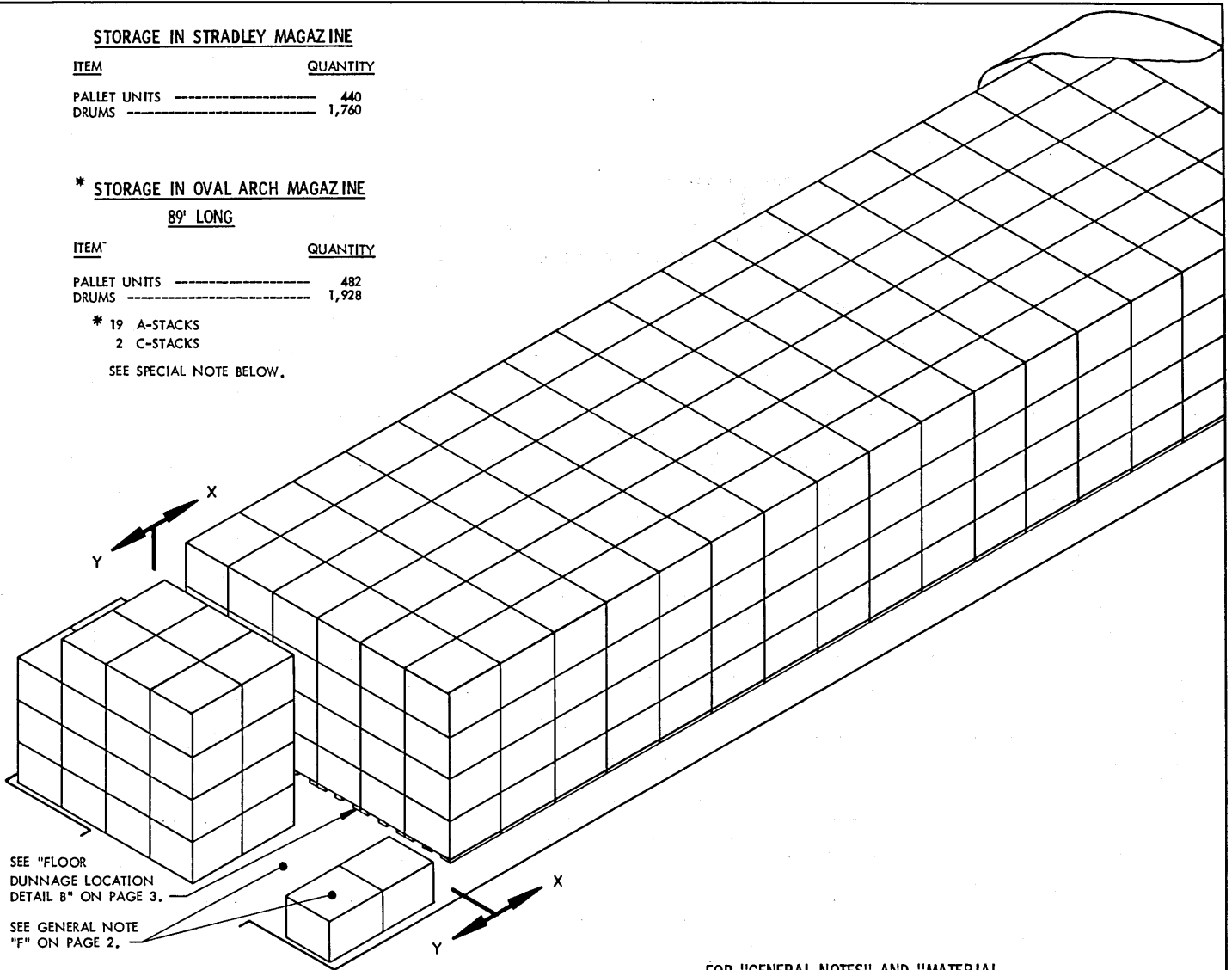
*** STORAGE IN OVAL ARCH MAGAZINE**

89' LONG

ITEM	QUANTITY
PALLET UNITS -----	482
DRUMS -----	1,928

- * 19 A-STACKS
- 2 C-STACKS

SEE SPECIAL NOTE BELOW.



SEE "FLOOR DUNNAGE LOCATION DETAIL B" ON PAGE 3.

SEE GENERAL NOTE "F" ON PAGE 2.

ISOMETRIC VIEW

(STRADLEY MAGAZINE)

FOR "GENERAL NOTES" AND "MATERIAL SPECIFICATIONS", SEE PAGE 2.

BILL OF MATERIAL (PER STACK) * *		
TYPE STACK	1" X 6" DUNNAGE LUMBER	
	LINEAR FEET	BOARD FEET
A	72.00	36.00
C	60.00	30.00

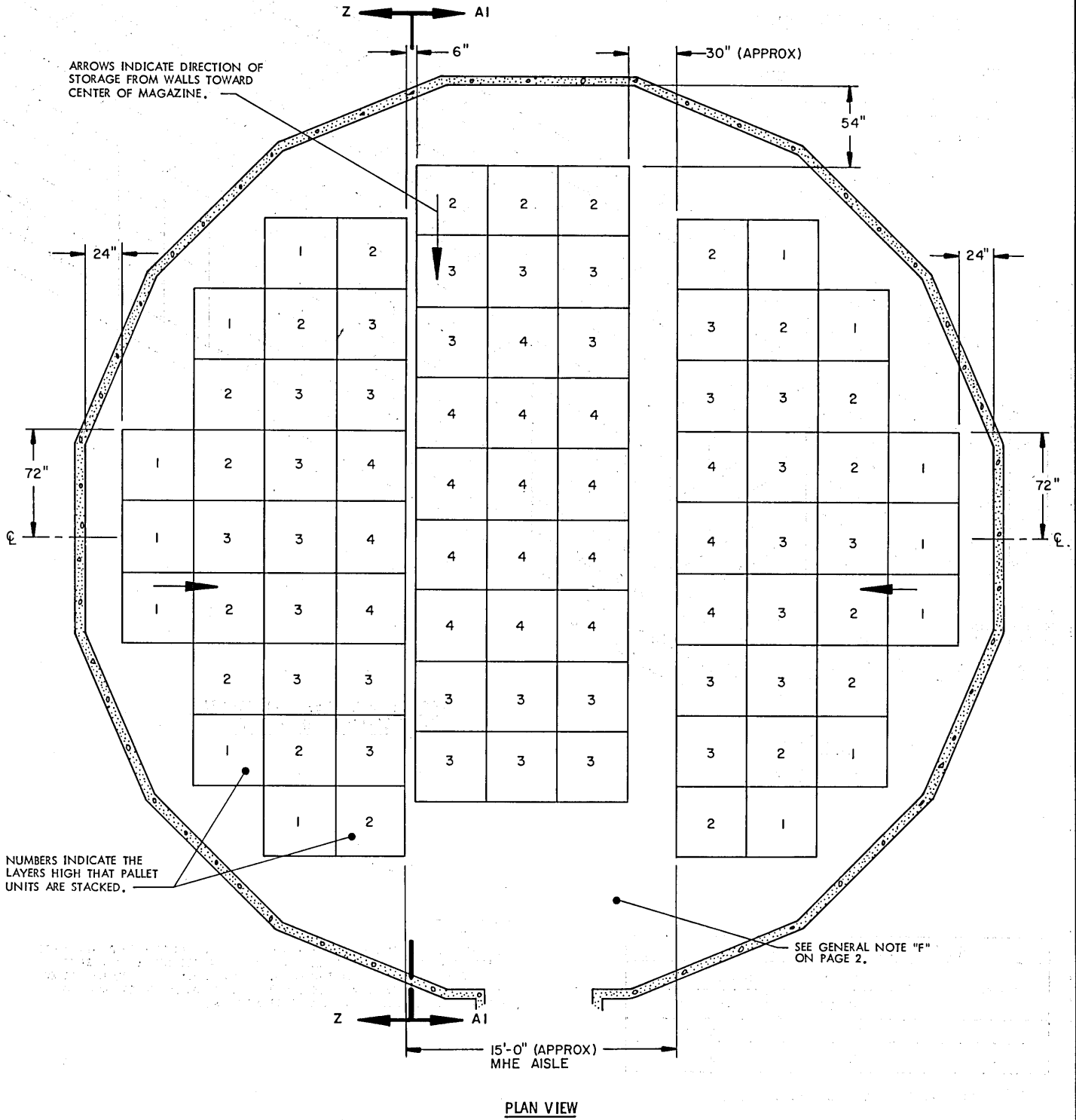
* * SEE GENERAL NOTES "E" AND "H" ON PAGE 2.

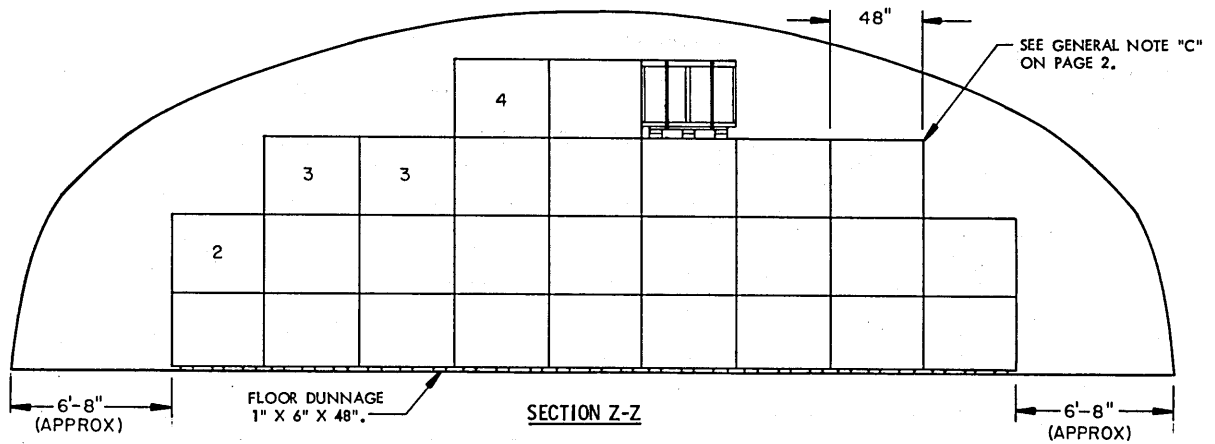
SPECIAL NOTE:

FOR STORAGE IN OVAL ARCH MAGAZINES, THE ONE (1) ROW OF PALLET UNITS ADJACENT TO THE OPERATING AISLE AS SHOWN IN "SECTION Y-Y" MUST BE OMITTED AND ONE (1) PALLET UNIT CAN BE ADDED ON THE OPPOSITE SIDE OF THE OPERATING AISLE BECAUSE OF THE RELATIVELY NARROW DOOR OPENING. THIS WILL REDUCE THE "C" STACKS TO 13 UNITS EACH.

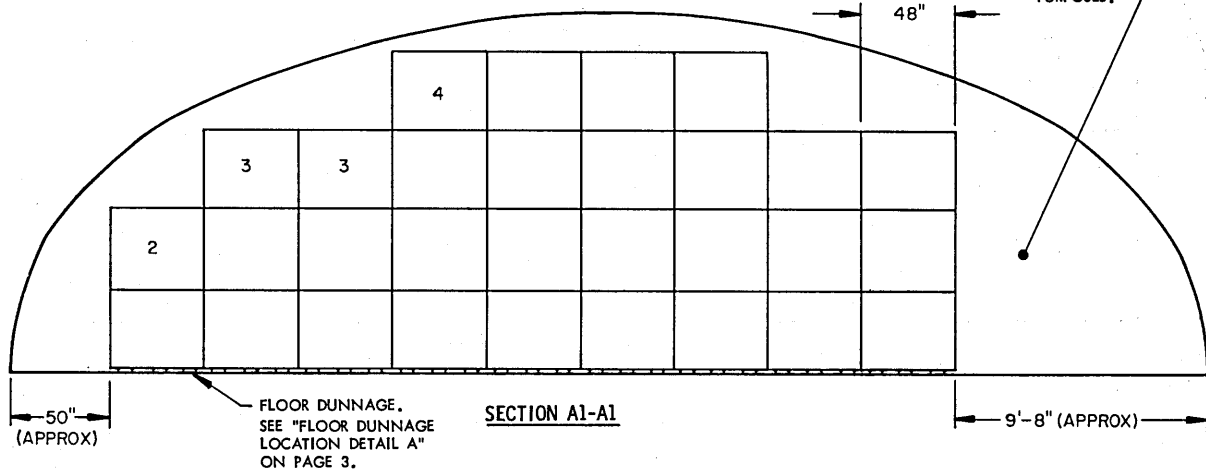
STORAGE IN 52' DIA MAGAZINE

ITEM	QUANTITY
PALLET UNITS	221
DRUMS	884





ONLY ONE OF THE ROWS OF PALLET UNITS IS SHOWN IN THIS SECTION. UNITS LOCATED IN ADJACENT ROWS OR STACKS HAVE NOT BEEN SHOWN FOR CLARITY PURPOSES.



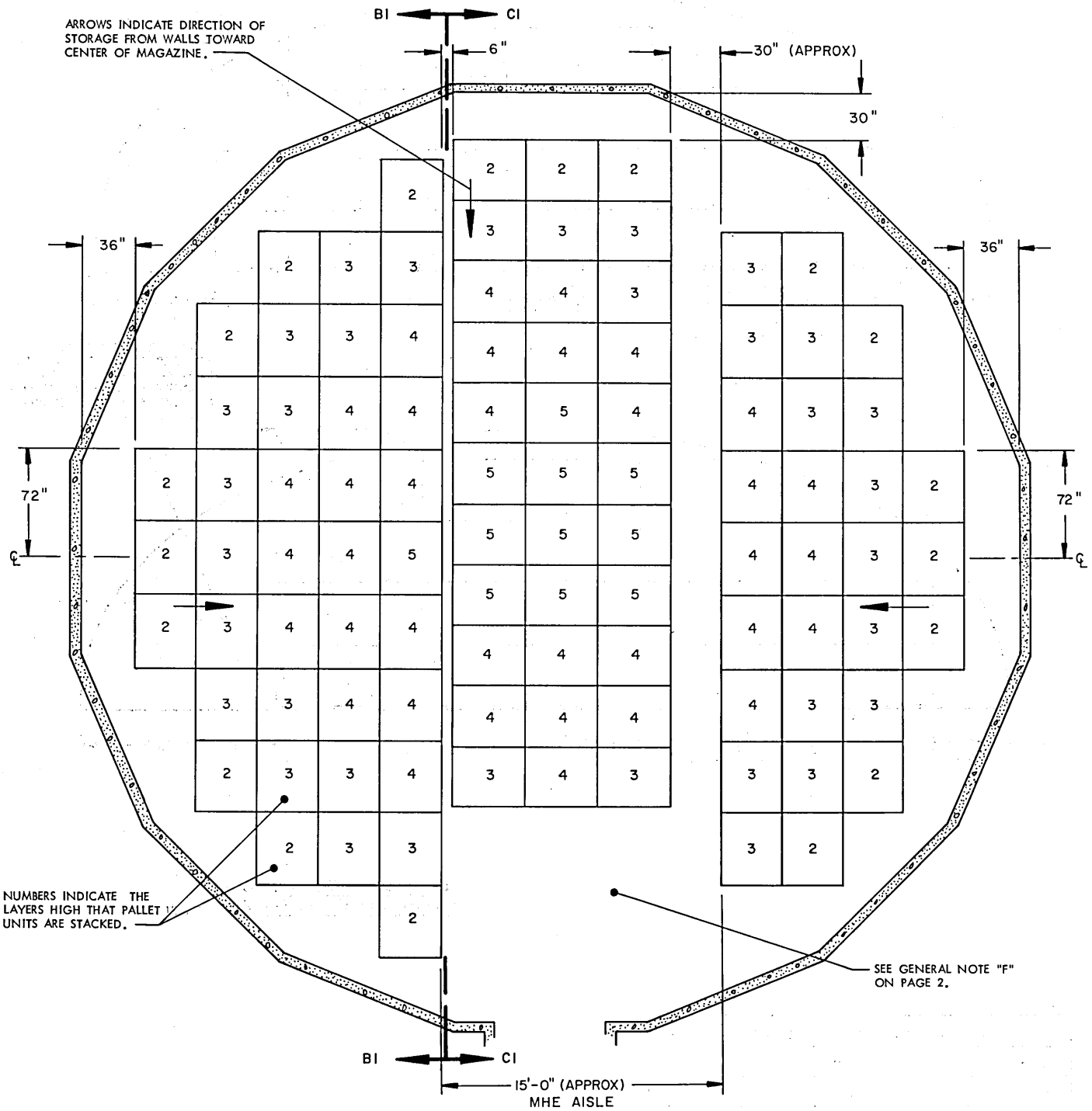
FOR "GENERAL NOTES" AND "MATERIAL SPECIFICATIONS", SEE PAGE 2.

BILL OF MATERIAL (PER FIRST LAYER PALLET UNIT) *		
LUMBER	LINEAR FEET	BOARD FEET
1" X 6"	12.00	6.00

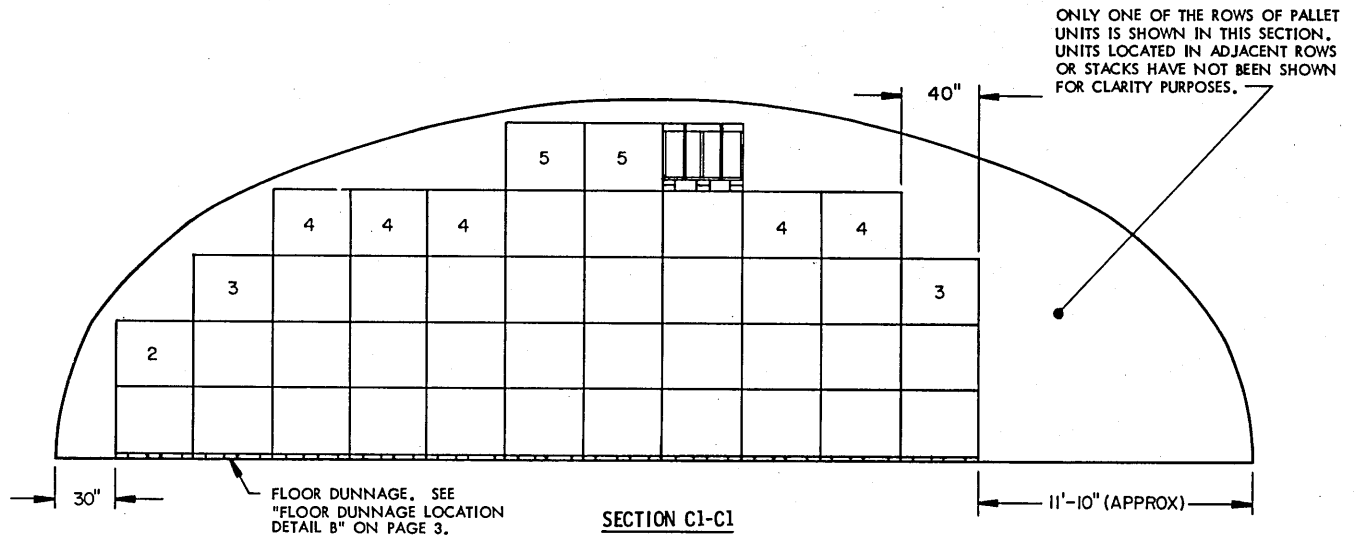
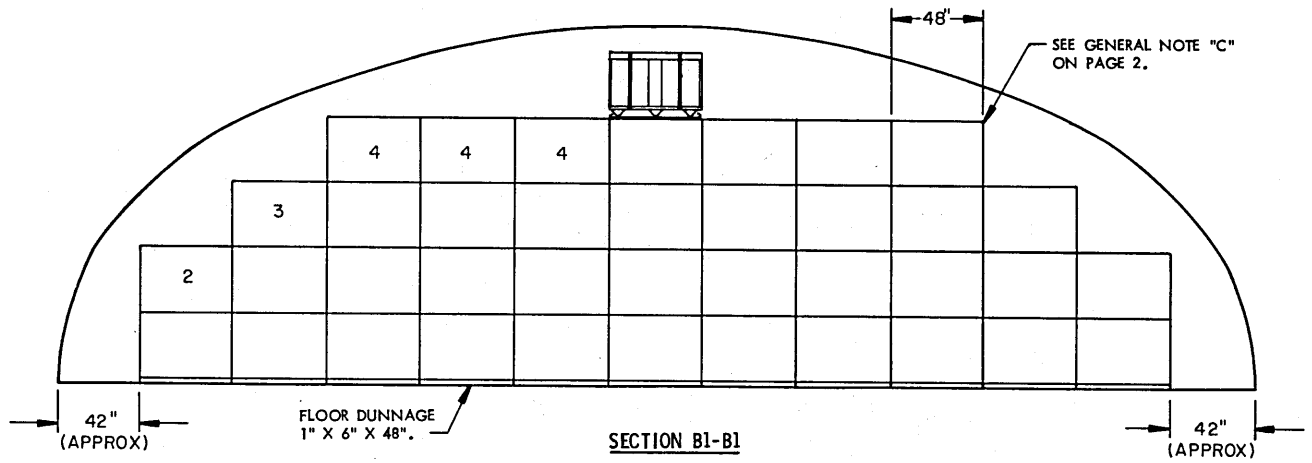
* SEE GENERAL NOTES "E" AND "H" ON PAGE 2.

STORAGE IN 52' DIA MAGAZINE

ITEM	QUANTITY
PALLET UNITS	339
DRUMS	1,356



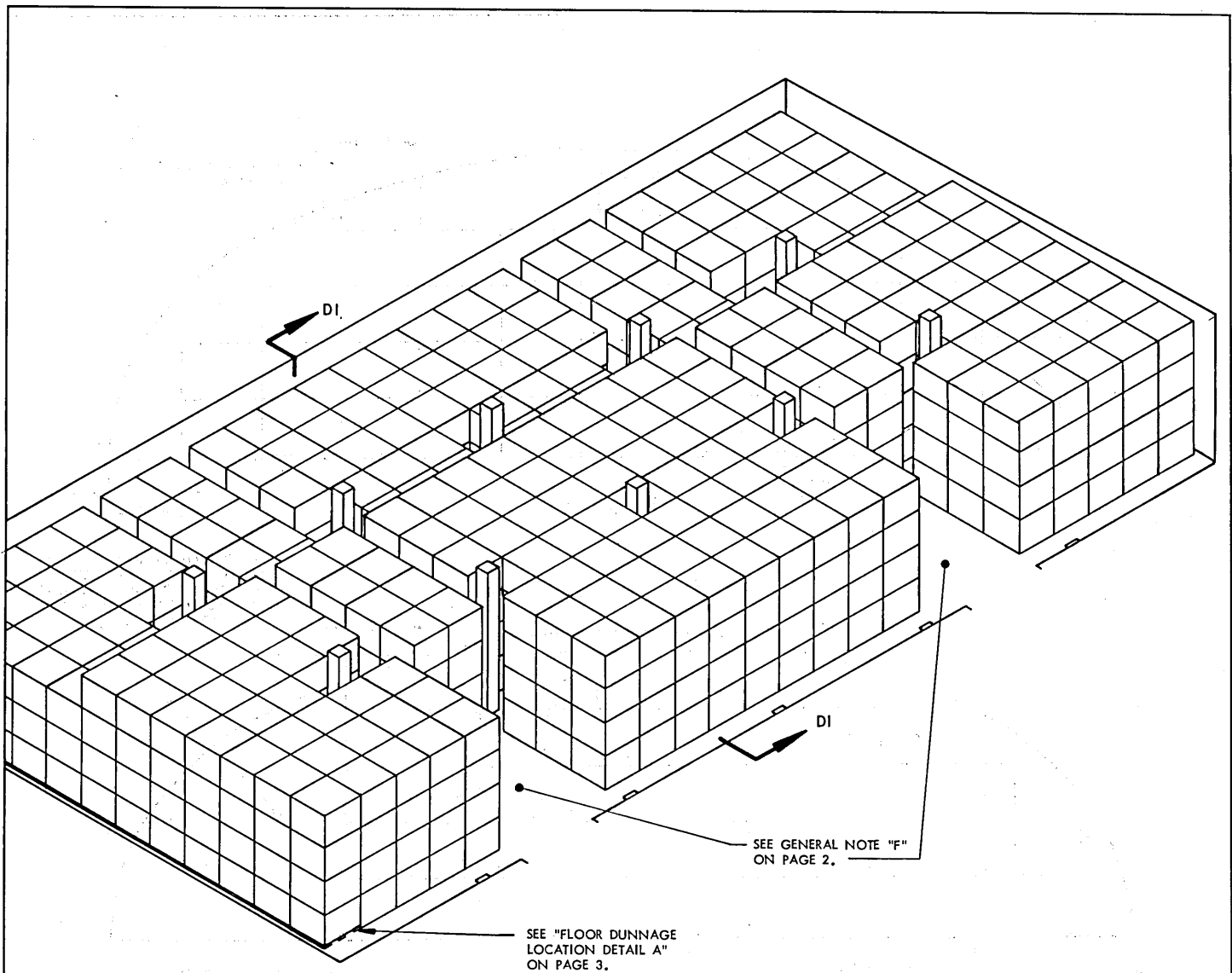
PLAN VIEW



FOR "GENERAL NOTES" AND "MATERIAL SPECIFICATIONS", SEE PAGE 2.

BILL OF MATERIAL (PER FIRST LAYER PALLET UNIT)*		
LUMBER	LINEAR FEET	BOARD FEET
1" X 6"	12.00	6.00

* SEE GENERAL NOTES "E" AND "H" ON PAGE 2.



ISOMETRIC VIEW

(100'-8" L X 50'-0" W MAGAZINE)

SEE GENERAL NOTE "F"
ON PAGE 2.

SEE "FLOOR DUNNAGE
LOCATION DETAIL A"
ON PAGE 3.

FOR "GENERAL NOTES" AND "MATERIAL
SPECIFICATIONS", SEE PAGE 2.

BILL OF MATERIAL (PER FIRST LAYER PALLET UNIT) *		
LUMBER	LINEAR FEET	BOARD FEET
1" X 6"	12.00	6.00

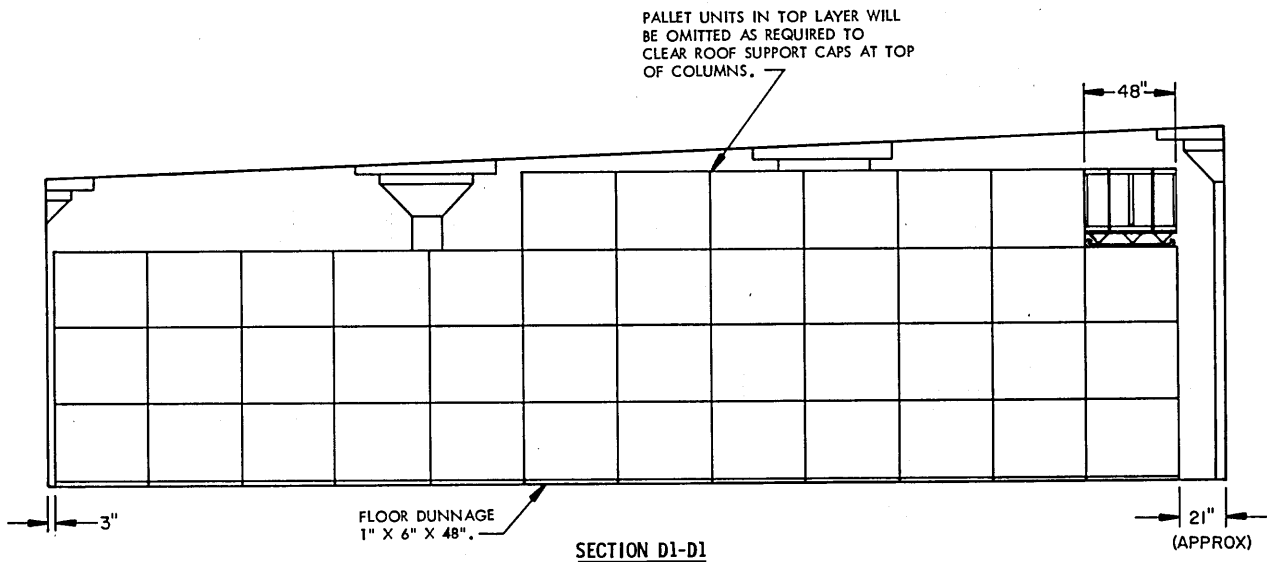
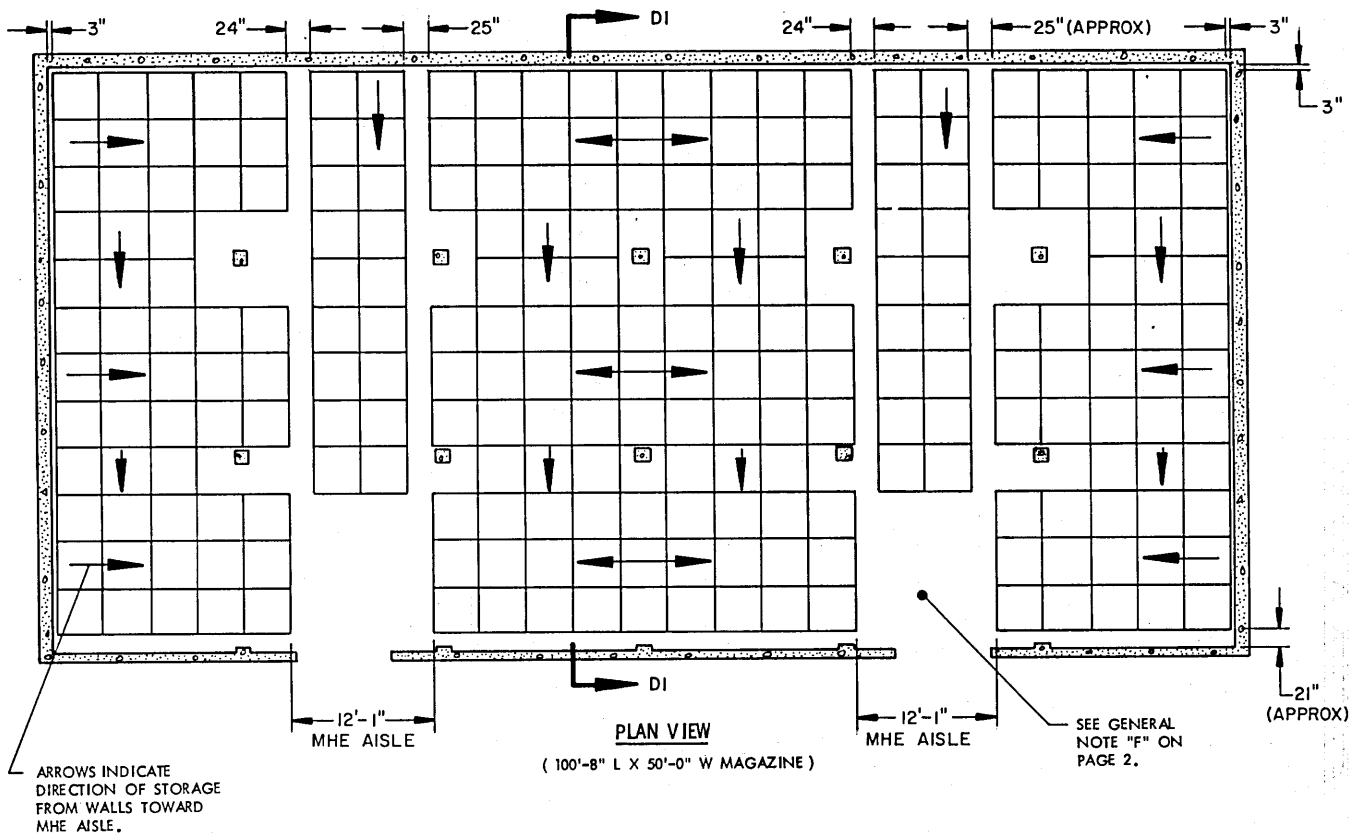
STORAGE IN 100' X 50' MAGAZINE

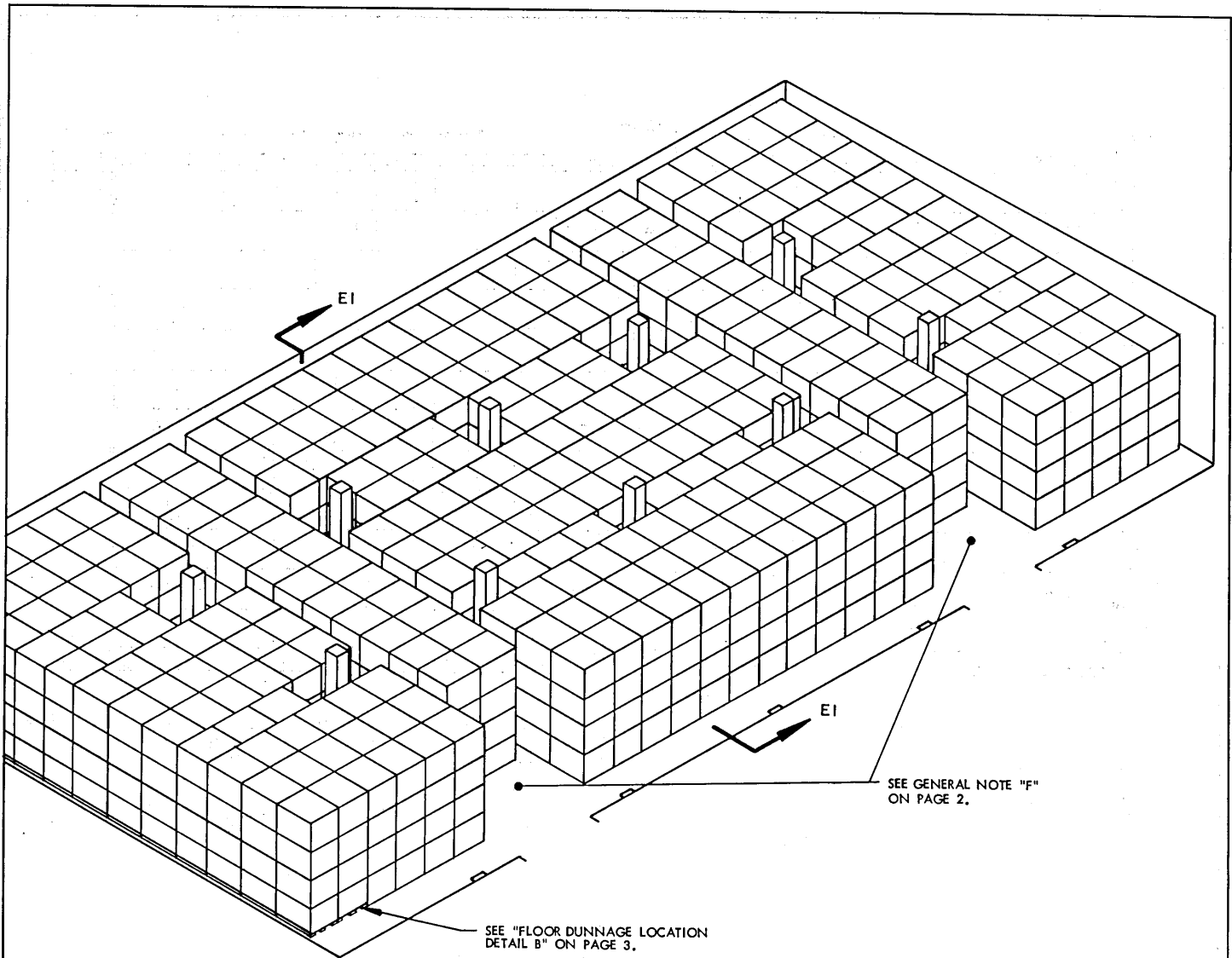
ITEM	QUANTITY
PALLET UNITS -----	871
DRUMS -----	3,484

* SEE GENERAL NOTES "E" AND "H" ON PAGE 2.

SPECIAL NOTE:

IF THE QUANTITY FOR A MAGAZINE IS TO BE REDUCED FROM WHAT IS SHOWN FOR ANY REASON, SUCH AS A LIMITED QUANTITY TO BE STORED, THE DELINEATED PROCEDURES ARE TO BE ADJUSTED BY OMITTING STACKS RATHER THAN BY OMITTING LAYERS.





ISOMETRIC VIEW

(100'-8" L X 50'-0" W MAGAZINE)

SEE GENERAL NOTE "F" ON PAGE 2.

SEE "FLOOR DUNNAGE LOCATION DETAIL B" ON PAGE 3.

FOR "GENERAL NOTES" AND "MATERIAL SPECIFICATIONS", SEE PAGE 2.

BILL OF MATERIAL (PER FIRST LAYER PALLET UNIT)*

LUMBER	LINEAR FEET	BOARD FEET
1" X 6"	12.00	6.00

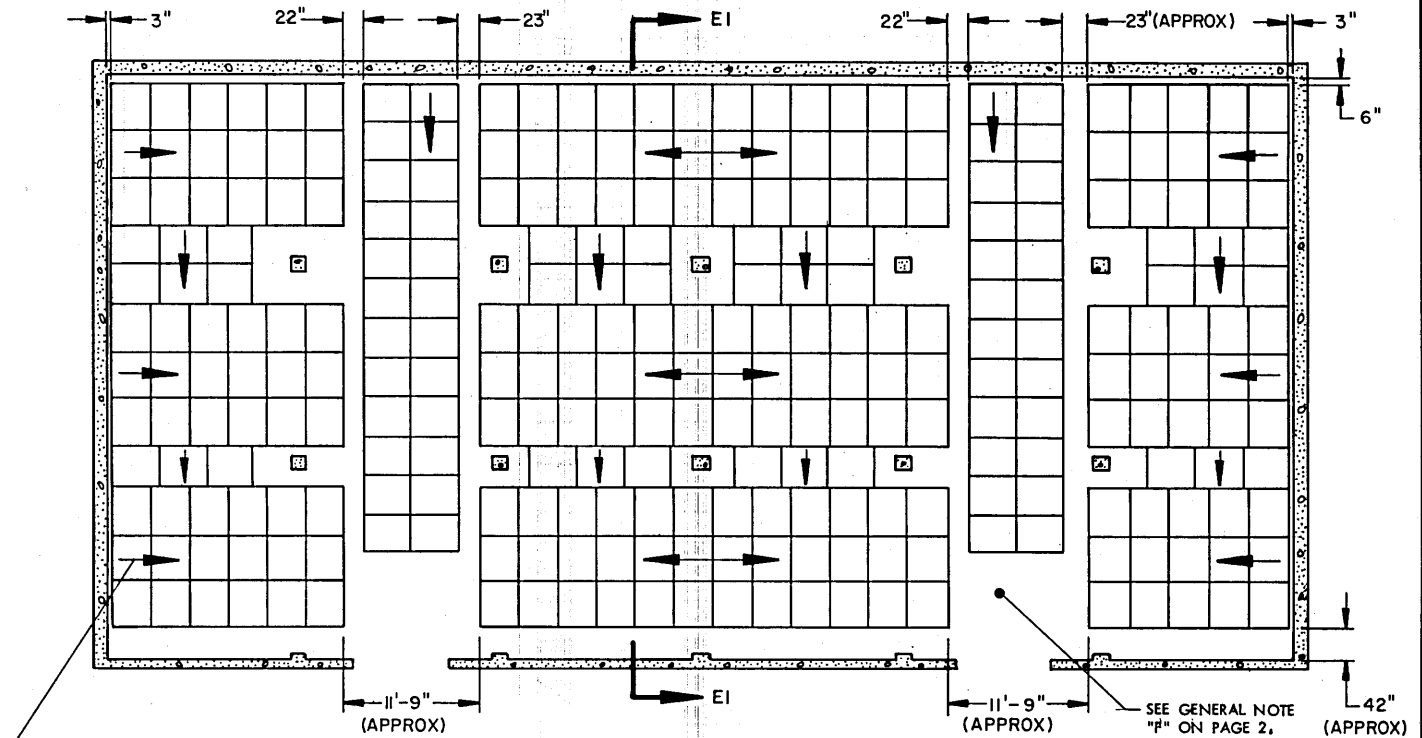
* SEE GENERAL NOTES "E" AND "H" ON PAGE 2.

STORAGE IN 100'-X 50' MAGAZINE

ITEM	QUANTITY
PALLET UNITS	1,164
DRUMS	4,656

SPECIAL NOTE:

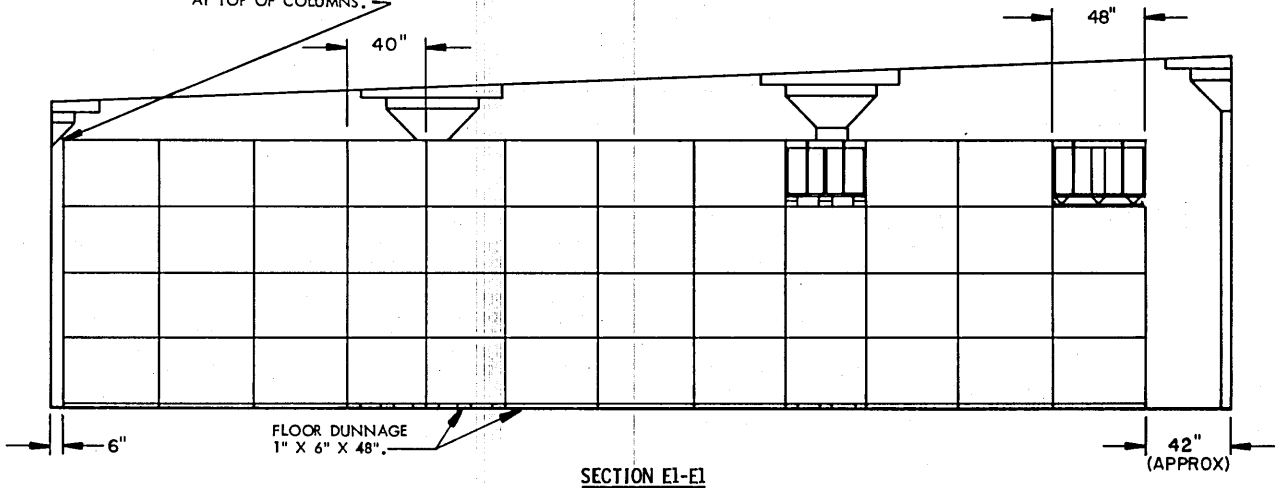
IF THE QUANTITY FOR A MAGAZINE IS TO BE REDUCED FROM WHAT IS SHOWN FOR ANY REASON, SUCH AS A LIMITED QUANTITY TO BE STORED, THE DELINEATED PROCEDURES ARE TO BE ADJUSTED BY OMITTING STACKS RATHER THAN BY OMITTING LAYERS.

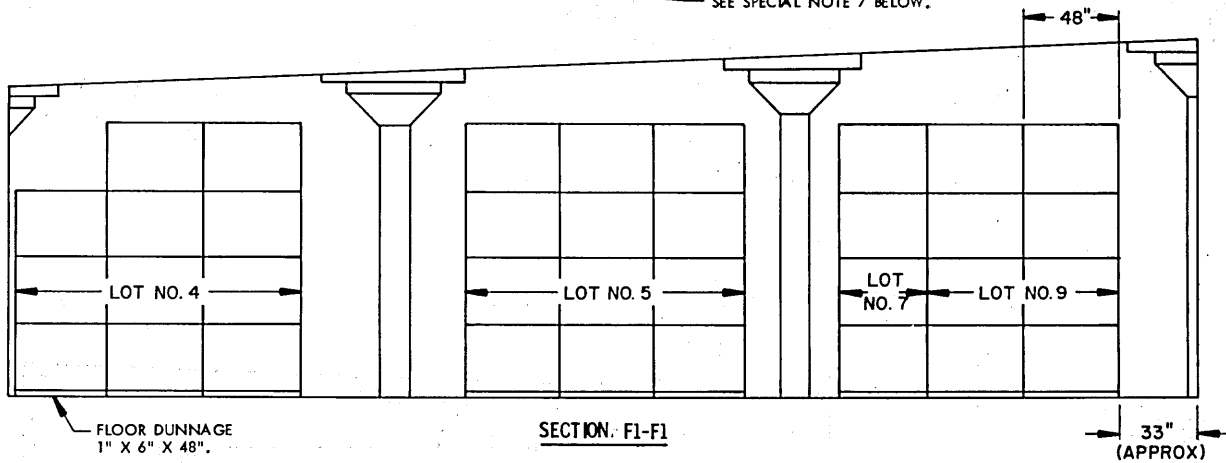
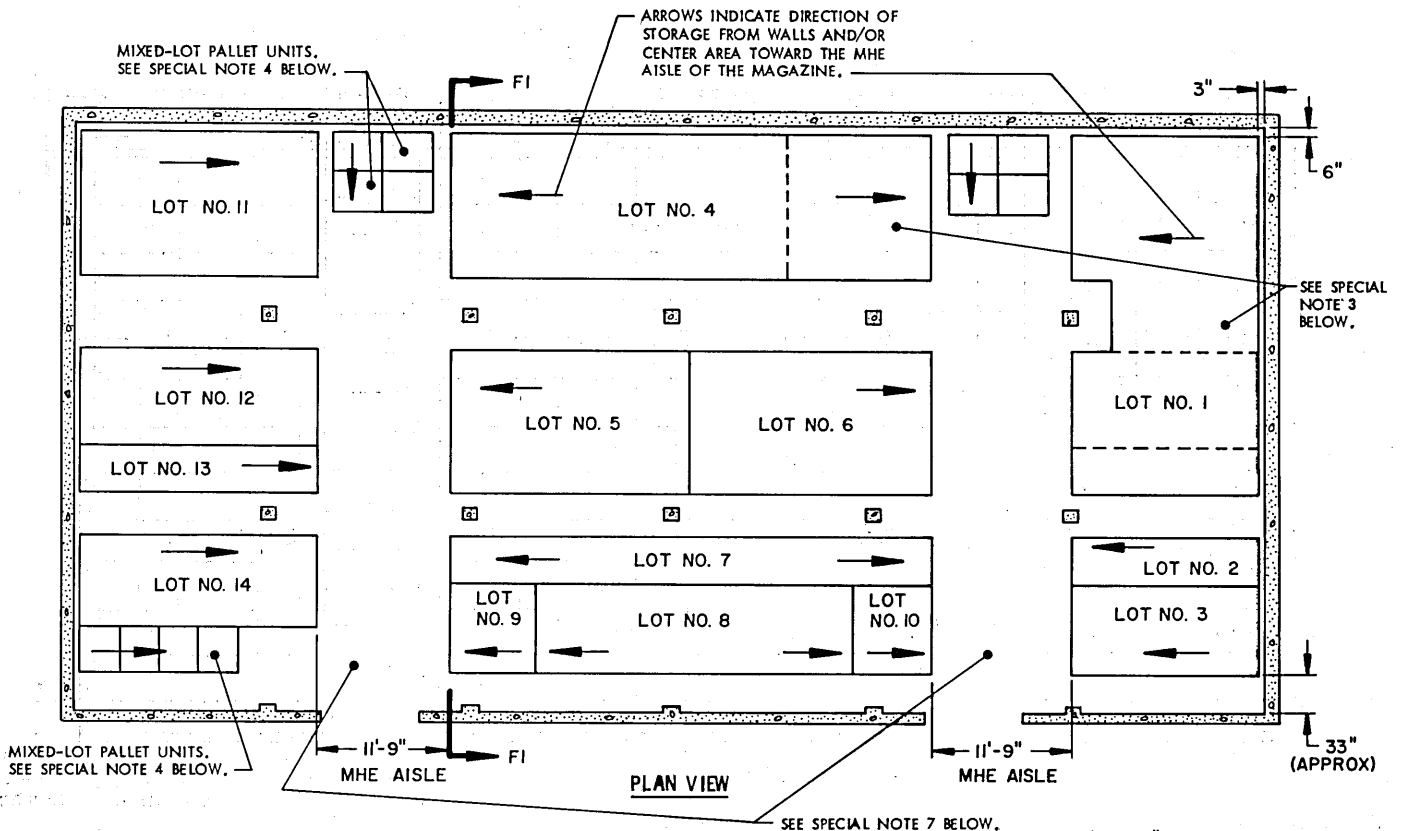


PLAN VIEW

(100'-8" L X 50'-0" W MAGAZINE)

PALLET UNITS IN TOP LAYER WILL BE OMITTED AS REQUIRED TO CLEAR ROOF SUPPORT CAPS AT TOP OF COLUMNS.





SPECIAL NOTES:

1. THE STORAGE PLANS SHOWN ARE TYPICAL ONLY. ADAPTATIONS MAY BE MADE AS NUMBER AND SIZES OF LOTS TO BE STORED IN MAGAZINE REQUIRE. ALTHOUGH, PROCEDURES ARE SHOWN IN A RECTANGULAR MAGAZINE, THE PRINCIPLES OF MULTIPLE-LOT STORAGE WILL APPLY TO THE OTHER STRUCTURES DEPICTED WITHIN THIS DOCUMENT.
2. AN INSPECTION/INVENTORY AISLE NOT LESS THAN 18" WIDE MUST BE PROVIDED AT ONE SIDE OF EACH "BURIED" LOT.
3. GENERALLY, THE LARGEST LOT SHOULD BE STORED IN THE REAR OR ON ONE SIDE OF THE MAGAZINE. HOWEVER, THESE AREAS MAY BE USED TO STORE MORE THAN ONE LOT BY ERECTING ROWS SIMILAR TO THOSE SHOWN IN THE CENTER AREA OR AS TYPICALLY INDICATED BY DOTTED LINES. EACH ADDITIONAL LOT MUST BE ACCESSIBLE FOR REMOVAL AND INSPECTION/INVENTORY IN ACCORDANCE WITH OTHER CRITERIA SPECIFIED IN THESE SPECIAL NOTES AND IN THE GENERAL NOTES ON PAGE 2.
4. A MIXED-LOT PALLET UNIT MAY HAVE FROM TWO LOTS PER PALLET UNIT UPWARDS TO AS MANY DIFFERENT LOTS AS DRUMS WITHIN THAT UNIT. HOWEVER, ALL DRUMS AND LOTS WITHIN THE PALLET UNIT MUST HAVE THE SAME NATIONAL STOCK NUMBER AND CONDITION CODE.
5. EACH LOT WITHIN THE MAGAZINE MUST BE ACCESSIBLE FOR MOVEMENT BY MHE. PALLET UNITS OF A SINGLE-LOT OR MIXED-LOT PALLET UNITS ARE CONSIDERED "ACCESSIBLE" IF NOT MORE THAN TWENTY-FOUR (24) "LIFTS" OF ANOTHER LOT OR LOTS HAVE TO BE MADE TO GAIN ACCESS TO THE SINGLE-LOT OR MIXED-LOT UNITS. A "LIFT" MAY CONSIST OF ONE (1) OR MORE PALLET UNITS, PROVIDING THE CAPACITY OF MHE PERMITS, AND SAFE HANDLING IS NOT JEOPARDIZED.

(SPECIAL NOTES CONTINUED)

6. WHEN TWO LOTS ARE STORED ADJACENT TO EACH OTHER THEY SHOULD BE SEPARATED BY AT LEAST 1" TO PROVIDE CLEARANCE FOR REMOVAL OF EITHER LOT.
7. THE MHE AISLE MAY BE USED TO STORE ONE OR MORE STACKS OF ADDITIONAL LOTS OR ADDITIONAL ITEMS THAT ARE FROM A LOT ADJACENT TO THE MHE AISLE. ADEQUATE SPACE FOR MHE OPERATION MUST BE MADE AVAILABLE FOR THE ADDITIONAL STORAGE. ALSO, COMPLIANCE WITH ALL OF THE MULTIPLE-LOT CRITERIA AS SET FORTH ON THIS PAGE MUST BE OBSERVED.

SEE SPECIAL NOTE 2 BELOW.

(CONTINUED AT RIGHT)