

# APPENDIX 88

## UNITIZATION PROCEDURES FOR BOXED AMMUNITION AND COMPONENTS ON SKIDDED BASES

M138 MINE DISPENSER, PACKED 1 PER METAL SHIPPING  
AND STORAGE CONTAINER, UNITIZED 4 CONTAINERS  
PER TYPE II SKID BASE; APPROX BOX SIZE  $36\frac{1}{4}$ " L  
X  $28\frac{3}{4}$ " W X  $26\frac{1}{8}$ " H

| SKIDDED UNIT DATA    |       |                                    |             |             |               |                 |
|----------------------|-------|------------------------------------|-------------|-------------|---------------|-----------------|
| ITEMS INCLUDED       |       | HAZARD CLASSIFICATION <sup>①</sup> |             |             |               | WEIGHT<br>(LBS) |
| NSN                  | DODIC | DOT<br>CLASS                       | CG<br>CLASS | QD<br>CLASS | COMP<br>GROUP |                 |
| 1095-<br>01-224-9974 | —     | — INERT —                          |             |             |               | 1, 216          |

### REVISION

REVISION NO. 1, DATED DECEMBER 1987, CONSISTS OF:

ADDING ITEM BY NATIONAL STOCK NUMBER TO SKIDDED UNIT  
DATA CHART.

**NOTICE:** THIS APPENDIX CANNOT STAND ALONE  
BUT MUST BE USED IN CONJUNCTION WITH THE BASIC  
UNITIZATION PROCEDURES DRAWING 19-48-4138-20PA1000.

① HAZARD CLASSIFICATION DATA CONTAINED IN THE  
ABOVE CHART IS FOR GUIDANCE AND INFORMATIONAL  
PURPOSES ONLY. VERIFICATION OF THE SPECIFIED  
DATA SHOULD BE MADE BY CONSULTING THE MOST  
RECENT JOINT HAZARD CLASSIFICATION SYSTEM LISTING  
OR OTHER APPROVED LISTING (S).

**DO NOT SCALE**

| REVISIONS |        |            |            | DRAFTSMAN<br>AW   | PROJ ENG<br>LAF/WRF            | NH (K-1)   |
|-----------|--------|------------|------------|---|--------------------------------|------------|
| 1         | DEC 87 | <i>WRF</i> | <i>WRF</i> | <i>WRF</i>  | <i>WRF</i>                     | <i>WRF</i> |
|           |        |            |            | CHECKER<br><i>WRF</i>   | LOG ENGRG OFFICE<br><i>WRF</i> |            |
|           |        |            |            | APPROVED, U.S. ARMY AMMUNITION, MUNITIONS AND CHEMICAL<br>COMMAND             |                                |            |
|           |        |            |            | <i>W. Martin</i>  | <i>B. Benham</i>               |            |
|           |        |            |            | APPROVED BY ORDER OF COMMANDING GENERAL, U.S. ARMY<br>MUNITIONS COMMAND (AMC) |                                |            |
|           |        |            |            | <i>William F. Ernst</i>   |                                |            |
|           |        |            |            | U.S. ARMY DEFENSE AMMUNITION CENTER AND SCHOOL                                |                                |            |
|           |        |            |            | U.S. ARMY AMC DRAWING   |                                |            |
|           |        |            |            | JANUARY 1986  |                                |            |
|           |        | CLASS      | DIVISION   | DRAWING   | FILE                           |            |
|           |        | 19         | 48         | 4138/<br>88   | 20PA<br>1000                   |            |

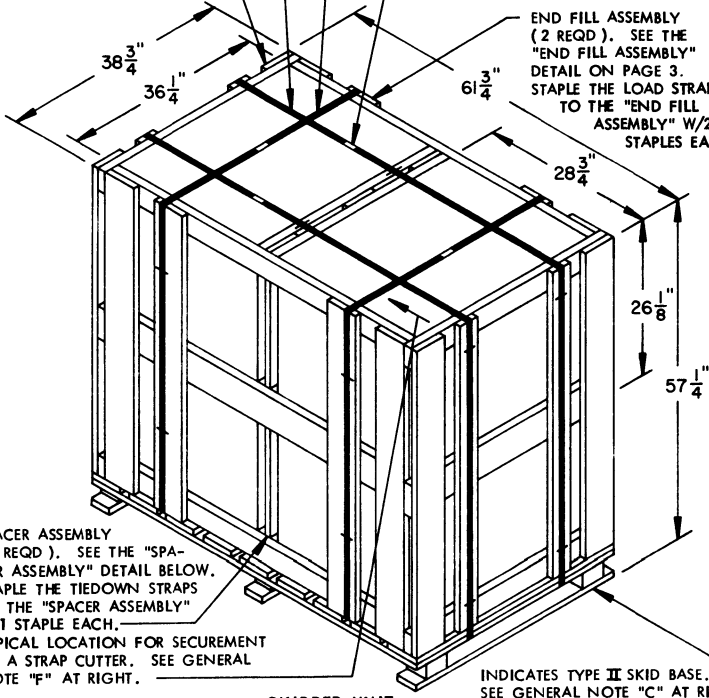
SIDE FILL ASSEMBLY (2 REQD). SEE THE "SIDE FILL ASSEMBLY" DETAIL ON PAGE 3. STAPLE THE TIEDOWN STRAPS TO THE "SIDE FILL ASSEMBLY" W/2 STAPLES EACH.

TIEDOWN STRAP, 3/4" X .035" OR .031" X 20'-0" LONG STEEL STRAPPING (2 REQD).

LOAD STRAP, 3/4" X .035" OR .031" X 16'-2" LONG STEEL STRAPPING (2 REQD).

SEAL FOR 3/4" STRAPPING (4 REQD, 1 PER STRAP). CRIMP EACH SEAL WITH TWO PAIR OF NOTCHES.

END FILL ASSEMBLY (2 REQD). SEE THE "END FILL ASSEMBLY" DETAIL ON PAGE 3. STAPLE THE LOAD STRAPS TO THE "END FILL ASSEMBLY" W/2 STAPLES EACH.



SPACER ASSEMBLY (1 REQD). SEE THE "SPACER ASSEMBLY" DETAIL BELOW. STAPLE THE TIEDOWN STRAPS TO THE "SPACER ASSEMBLY" W/1 STAPLE EACH. TYPICAL LOCATION FOR SECUREMENT OF A STRAP CUTTER. SEE GENERAL NOTE "F" AT RIGHT.

**SKIDDED UNIT**

SEE GENERAL NOTE "B" AT RIGHT.

INDICATES TYPE II SKID BASE. SEE GENERAL NOTE "C" AT RIGHT.

4 BOXES (MINE DISPENSER; 1 PER BOX) @ 245 POUNDS ----- 980 LBS (APPROX)  
 DUNNAGE ----- 185 LBS  
 SKID BASE ----- 51 LBS

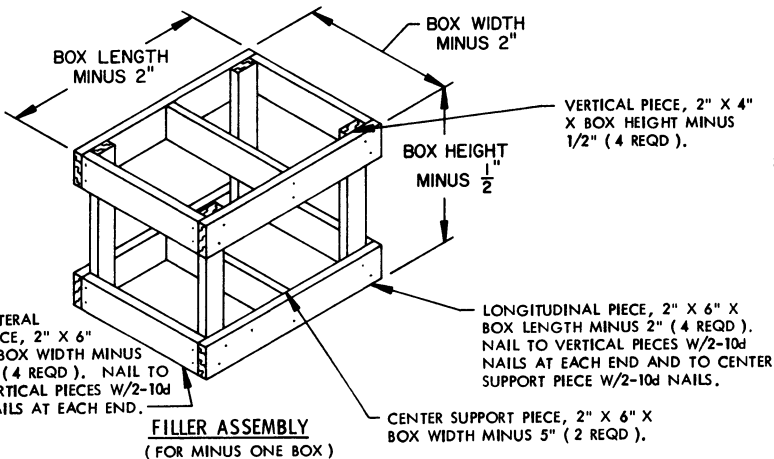
TOTAL WEIGHT ----- 1,216 LBS (APPROX)  
 CUBE ----- 79.3 CU FT

**GENERAL NOTES**

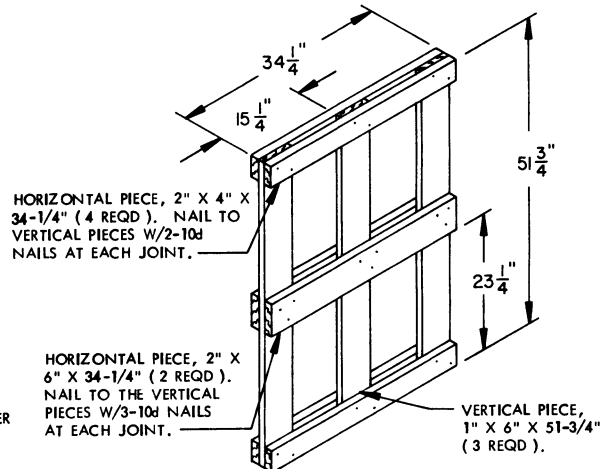
- A. THIS APPENDIX CANNOT STAND ALONE BUT MUST BE USED IN CONJUNCTION WITH THE BASIC UNITIZATION PROCEDURES DRAWING 19-48-4138-20PA1000. TO PRODUCE AN APPROVED UNIT LOAD, ALL PERTINENT PROCEDURES, SPECIFICATIONS AND CRITERIA SET FORTH WITHIN THE BASIC DRAWING WILL APPLY TO THE PROCEDURES DELINEATED IN THIS APPENDIX. ANY EXCEPTIONS TO THE BASIC PROCEDURES ARE SPECIFIED IN THIS APPENDIX.
- B. DIMENSIONS, CUBE AND WEIGHT OF A SKIDDED UNIT WILL VARY SLIGHTLY DEPENDING UPON THE ACTUAL DIMENSIONS OF THE BOXES AND THE WEIGHT OF THE SPECIFIC ITEM BEING UNITIZED.
- C. ONLY A TYPE II SKID BASE WILL BE USED TO ASSEMBLE THIS UNIT. THE "W" DIMENSION OF THE SKID BASE WILL BE 38" AND THE "L" DIMENSION WILL BE 61". NOTE: A TYPE I SKID BASE IS NOT APPROVED FOR USE IN UNITIZING THIS ITEM.
- D. WHEN A FILLER ASSEMBLY IS USED IN A UNIT LOAD THE TIEDOWN STRAPS WILL BE STAPLED TO THE TOP LONGITUDINAL PIECES OF THE ASSEMBLY.
- E. THE FOLLOWING AMC (DARCOM) DRAWINGS ARE APPLICABLE FOR OULLOADING AND STORAGE OF THE ITEMS COVERED BY THIS APPENDIX.  
 CARLOADING ----- DRAWING 19-48-4123-5PA1003  
 TRUCKLOADING ----- DRAWING 19-48-4124-11PA1004  
 STORAGE ----- DRAWING 19-48-4125-1-2-3-4-14-22PA1003
- F. FOR METHOD OF SECURING A STRAP CUTTER TO THE SKIDDED UNIT, SEE DARCOM DRAWING 19-48-4127-20P1000.
- G. IF ITEMS COVERED HEREIN ARE UNITIZED PRIOR TO ISSUANCE OF THIS APPENDIX, THE BOXES NEED NOT BE REUNITIZED SOLELY TO CONFORM TO THIS APPENDIX.
- H. THE UNITIZATION PROCEDURES DEPICTED HEREIN MAY ALSO BE USED FOR UNITIZING MINE DISPENSERS WHEN IDENTIFIED BY DIFFERENT NATIONAL STOCK NUMBERS (NSN) THAN WHAT IS SHOWN ON THE TITLE PAGE, PROVIDED THE BOX PACK DOES NOT VARY FROM WHAT IS DELINEATED HEREIN. THE EXPLOSIVE CLASSIFICATION OF OTHER ITEMS MAY BE DIFFERENT THAN WHAT IS SHOWN.

**BILL OF MATERIAL**

| LUMBER                        | LINEAR FEET       | BOARD FEET |
|-------------------------------|-------------------|------------|
| 1" X 4"                       | 17.25             | 5.75       |
| 1" X 6"                       | 64.69             | 32.34      |
| 2" X 4"                       | 43.42             | 28.95      |
| 2" X 6"                       | 21.71             | 21.71      |
| NAILS                         | NO. REQD          | POUNDS     |
| 6d (2")                       | 144               | 3/4        |
| 10d (3")                      | 42                | 3/4        |
| TYPE II SKID BASE -----       | 1 REQD -----      | 51 LBS     |
| STEEL STRAPPING, 3/4" -----   | 72.33' REQD ----- | 5.17 LBS   |
| SEAL FOR 3/4" STRAPPING ----- | 4 REQD -----      | NIL        |
| STAPLES -----                 | 18 REQD -----     | NIL        |

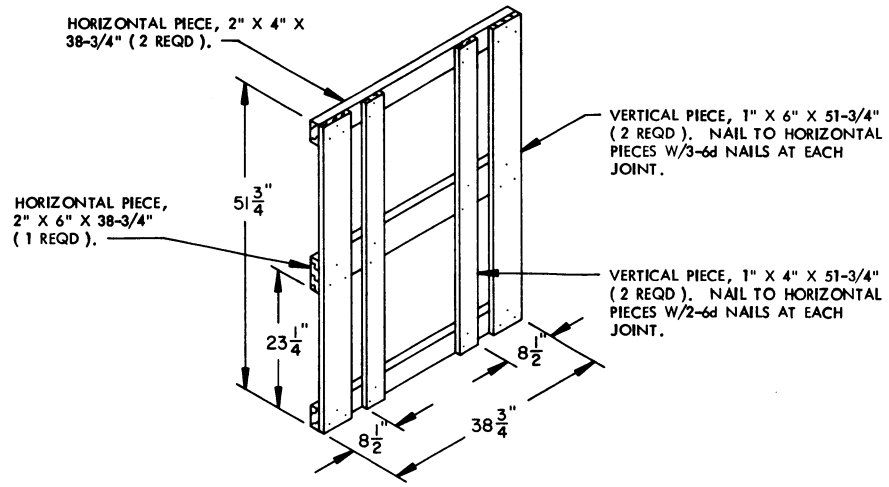


**FILLER ASSEMBLY**  
(FOR MINUS ONE BOX)

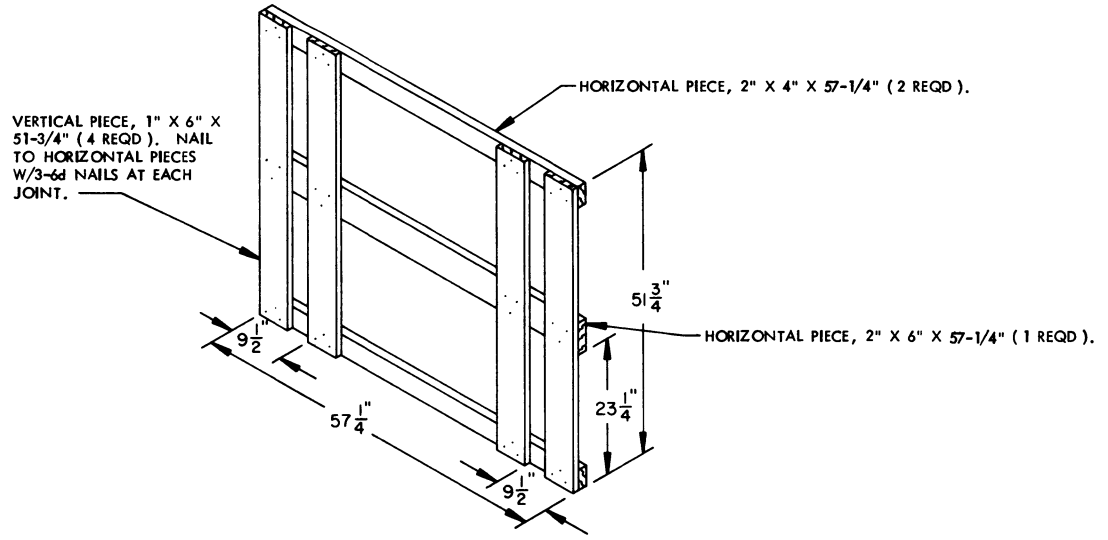


**SPACER ASSEMBLY**

(1 REQD)



**SIDE FILL ASSEMBLY**  
( 2 REQD )



**END FILL ASSEMBLY**  
( 2 REQD )

