

APPENDIX 25A

UNITIZATION PROCEDURES FOR BOXED AMMUNITION AND COMPONENTS ON SKIDDED BASES

CARTRIDGE, 152 MM, PACKED 1 PER WOODEN
BOX, UNITIZED 12 BOXES PER TYPE I SKID
BASE; APPROX BOX SIZE 42 ¹/₈" L X 12 ¹¹/₁₆" W
X 13 ¹⁵/₁₆" H


SKIDDED UNIT DATA						
ITEMS INCLUDED		HAZARD CLASSIFICATION ^①				WEIGHT (LBS)
NSN	DODIC	DOT CLASS	CG CLASS	QD CLASS	COMP GROUP	
1320-00-491-0419	D380	A	IV	(12)1.2	E	1,209
00-926-1877	D381	A	IV	1.1	E	1,209
* 00-182-3432	D381	A	IV	1.1	E	1,213
00-491-0420	D381	A	IV	1.1	E	1,213
00-351-7905	D383	B	II-B	1.3	C	1,213
00-180-9784	D383	B	II-B	1.3	C	1,213
00-935-6185	D383	B	II-B	1.3	C	1,213
00-935-2018	D380	A	IV	(12)1.2	E	1,213
00-143-6832	D381	A	IV	1.1	E	1,213

* SEE GENERAL NOTE "B" ON PAGE 2.

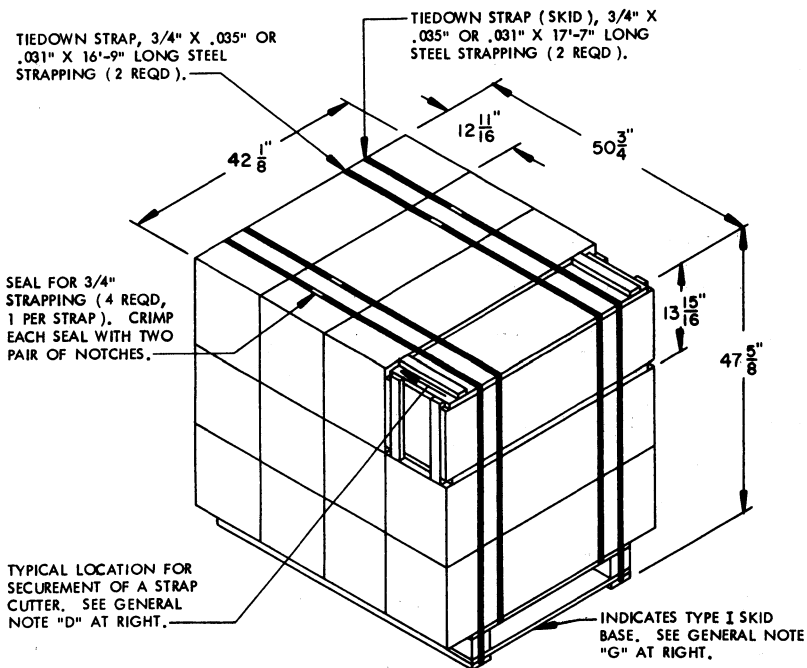
NOTICE: THIS APPENDIX CANNOT STAND ALONE BUT MUST BE USED IN CONJUNCTION WITH THE BASIC UNITIZATION PROCEDURES DRAWING 19-48-4138-20PA1000.

^① HAZARD CLASSIFICATION DATA CONTAINED IN THE ABOVE CHART IS FOR GUIDANCE AND INFORMATIONAL PURPOSES ONLY. VERIFICATION OF THE SPECIFIED DATA SHOULD BE MADE BY CONSULTING THE MOST RECENT JOINT HAZARD CLASSIFICATION SYSTEM LISTING OR OTHER APPROVED LISTING(S).

DO NOT SCALE

REVISIONS			DRAWING NO.	PROJ. ENG.
			19-48-4138-20PA1000	MWD / NWW
			R. W. SRG	J. L. SRG
			APPROVED, U. S. ARMY ARMAMENT, MUNITIONS AND SERVICIALES COMMAND	
			 DRMMC-LEP DRMMC-TMO	
			APPROVED BY ORDER OF COMMANDING GENERAL, U. S. ARMY MATERIAL DEVELOPMENT AND READINESS COMMAND (DMRCOM)	
			U. S. ARMY DEFENSE AMMUNITION CENTER & SCHOOL U. S. ARMY DARCOM DRAWING	
			OCTOBER 1983	
			CLASS	DIVISION
			DRAWING	FILE
			19	48
			4138	20PA
			25A	1000

PROJECT FSA 127/25A-71



SKIDDED UNIT

SEE GENERAL NOTE "B" AT RIGHT.

12 BOXES (152 MM CARTRIDGE, 1 PER BOX) @ 97.5 LBS -----	1,170 LBS (APPROX)
DUNNAGE -----	5 LBS
SKID BASE -----	38 LBS
TOTAL WEIGHT -----	1,213 LBS (APPROX)
CUBE -----	58.9 CU FT (APPROX)

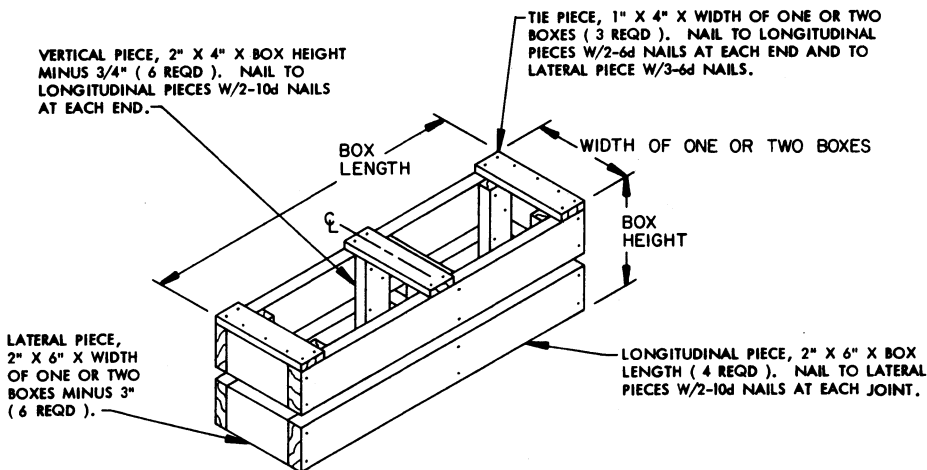
BILL OF MATERIAL

TYPE I SKID BASE, 32-5/8" W X 49-3/4" L --	1 REQD	38 LBS
STEEL STRAPPING, 3/4" -----	68 REQD	4.90 LBS
SEAL FOR 3/4" STRAPPING -----	4 REQD	NIL

GENERAL NOTES

- A. THIS APPENDIX CANNOT STAND ALONE BUT MUST BE USED IN CONJUNCTION WITH THE BASIC UNITIZATION PROCEDURES DRAWING 19-48-4138-20PA1000. TO PRODUCE AN APPROVED UNIT LOAD, ALL PERTINENT PROCEDURES, SPECIFICATIONS AND CRITERIA SET FORTH WITHIN THE BASIC DRAWING WILL APPLY TO THE PROCEDURES DELINEATED IN THIS APPENDIX. ANY EXCEPTIONS TO THE BASIC PROCEDURES ARE SPECIFIED IN THIS APPENDIX.
- B. DIMENSIONS, CUBE AND WEIGHT OF A SKIDDED UNIT WILL VARY SLIGHTLY DEPENDING UPON THE ACTUAL DIMENSIONS OF THE BOXES AND THE WEIGHT OF THE SPECIFIC ITEM BEING UNITIZED. NOTE: IF THE BOX LENGTH IS DIFFERENT THAN THAT SHOWN IN THE UNIT DETAIL, THE "W" DIMENSION OF THE SKID BASE MUST BE ADJUSTED TO SUIT THE BOX BEING UNITIZED. IF THE BOX WIDTH IS DIFFERENT THAN THAT SHOWN IN THE UNIT DETAIL, THE "L" DIMENSION OF THE SKID BASE MUST BE ADJUSTED TO SUIT THE BOX BEING UNITIZED.
- C. THE FOLLOWING DARCOM DRAWINGS ARE APPLICABLE FOR OUT-LOADING AND STORAGE OF THE ITEMS COVERED BY THIS APPENDIX.

CARLOADING -----	DRAWING 19-48-4123-5PA1003
TRUCKLOADING -----	DRAWING 19-48-4124-11PA1004
STORAGE -----	DRAWING 19-48-4125-1-2-3-4-14PA1003
- D. FOR METHOD OF SECURING A STRAP CUTTER TO THE SKIDDED UNIT, SEE DARCOM DRAWING 19-48-4127-20P1000.
- E. IF ITEMS COVERED HEREIN ARE UNITIZED PRIOR TO ISSUANCE OF THIS APPENDIX, THE BOXES NEED NOT BE REUNITIZED SOLELY TO CONFORM TO THIS APPENDIX.
- F. THE UNITIZATION PROCEDURES DEPICTED HEREIN MAY ALSO BE USED FOR UNITIZING 152 MM CARTRIDGES WHEN IDENTIFIED BY DIFFERENT NATIONAL STOCK NUMBERS (NSN) THAN WHAT IS SHOWN ON THE TITLE PAGE, PROVIDED THE BOX PACK DOES NOT VARY FROM WHAT IS DELINEATED HEREIN. THE EXPLOSIVE CLASSIFICATION OF OTHER ITEMS MAY BE DIFFERENT THAN WHAT IS SHOWN.
- G. NOTE: A TYPE II SKID BASE IS NOT APPROVED FOR USE IN UNITIZING THESE ITEMS. SEE GENERAL NOTE "B" ON PAGE 2 OF THE BASIC PROCEDURES DRAWING 19-48-4138-20PA1000.
- H. WHEN THE UNIT LOAD DEPICTED AT LEFT IS TO BE USED FOR UNITIZING MARINE CORPS AMMUNITION, ONE LAYER OF BOXES MUST BE OMITTED, TIEDOWN STRAP LENGTHS MUST BE DECREASED TO 15'-1" AND 14'-3". THIS WILL RESULT IN AN OVERALL UNIT HEIGHT OF 33'-5/8", A GROSS UNIT WEIGHT OF 823 POUNDS, AND A UNIT CUBE OF 41.6 CUBIC FEET. ADDITIONALLY, THE UNIT LOAD MAY BE MODIFIED AS DESCRIBED WHEN BEING SHIPPED BY MILVAN OR COMMERCIAL INTERMODAL FR EIGHT CONTAINER, CONVENTIONAL VAN TRAILER OR CONVENTIONAL OR HIGH-CAPACITY BOXCAR. THE DETERMINATION TO REDUCE THE LOAD BY A LAYER FOR TRANSPORTATION WILL BE MADE BY THE RESPONSIBLE COMMAND AND WILL BE BASED UPON ECONOMICS OF TRANSPORTATION AND HANDLING.



FILLER ASSEMBLY

(FOR MINUS ONE OR TWO BOXES)