

APPENDIX 25

UNITIZATION PROCEDURES FOR BOXED AMMUNITION AND COMPONENTS ON SKIDDED BASES

DUMMY CARTRIDGE, 152 MM, PACKED 1 PER
WOODEN BOX, UNITIZED 30 BOXES PER TYPE
I SKID BASE; APPROX BOX SIZE $29\frac{7}{8}$ " L X
 $8\frac{1}{8}$ " W X $8\frac{7}{8}$ " H

SKIDDED UNIT DATA						
ITEMS INCLUDED		HAZARD CLASSIFICATION				WEIGHT
NSN	DODIC	DOT CLASS	CG CLASS	QD CLASS	COMP GROUP	(LBS)
1320-00-926-1893	D500	INERT				2,113

NOTICE: THIS APPENDIX CANNOT STAND ALONE BUT MUST BE USED IN CONJUNCTION WITH THE BASIC UNITIZATION PROCEDURES DRAWING 19-48-4138-20PA1000.

REVISIONS				DRAFTER/CHKD	PROJ ENG
				<i>E. K. Misk</i>	<i>A. B. C. / MWD</i>
				<i>B. J. / H.C.</i>	<i>John Boyd</i>
				APPROVED, U. S. ARMY ARMAMENT, MUNITIONS AND CHEMICAL COMMAND	
				<i>M. M. / LEP</i>	<i>John Boyd</i>
				APPROVED BY ORDER OF COMMANDING GENERAL, U. S. ARMY MATERIEL DEVELOPMENT AND READINESS COMMAND (DARCOM)	
				<i>John L. Boyd</i> U. S. ARMY DEPERE AMMUNITION SCHOOL & CENTER	
				U. S. ARMY DARCOM DRAWING	
				NOVEMBER 1983	
				CLASS	DIVISION
				DRAWING	FILE
				19	48
				4138/25	20 PA 1000

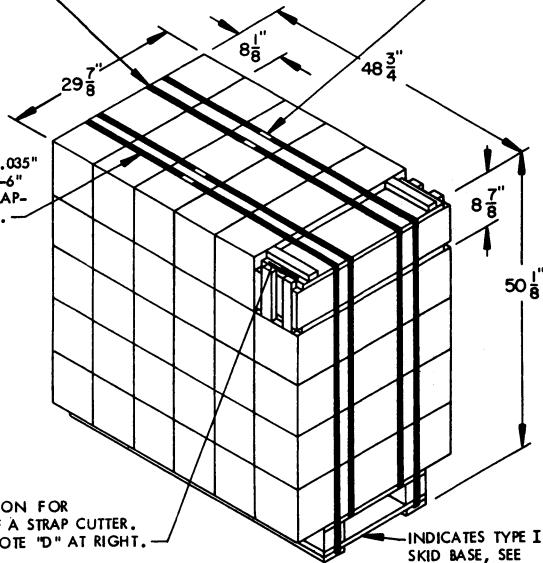
DO NOT SCALE

TIEDOWN STRAP, 3/4" X .035" OR .031" BY 16'-8" LONG STEEL STRAPPING (2 REQD.).

SEAL FOR 3/4" STRAPPING (4 REQD., 1 PER STRAP). CRIMP EACH SEAL WITH TWO PAIR OF NOTCHES.

TIEDOWN STRAP (SKID), 3/4" X .035" OR .031" BY 17'-6" LONG STEEL STRAPPING (2 REQD.).

TYPICAL LOCATION FOR SECUREMENT OF A STRAP CUTTER. SEE GENERAL NOTE "D" AT RIGHT.



SKIDDED UNIT

SEE GENERAL NOTE "B" AT RIGHT.

30 BOXES (152MM, DUMMY CARTRIDGE, 1 PER BOX) @ 69 LBS-----2,070 LBS (APPROX)
 DUNNAGE-----5 LBS
 SKID BASE-----38 LBS

TOTAL WEIGHT-----2,113 LBS (APPROX)
 CUBE-----42.3 CU FT (APPROX)

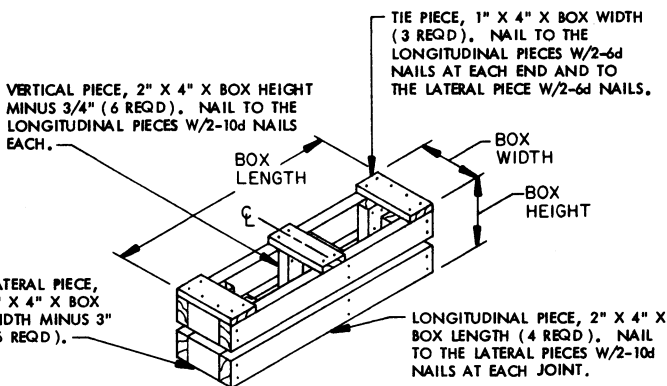
GENERAL NOTES

- A. THIS APPENDIX CANNOT STAND ALONE BUT MUST BE USED IN CONJUNCTION WITH THE BASIC UNITIZATION PROCEDURES DRAWING 19-48-4138-20PA1000. TO PRODUCE AN APPROVED UNIT LOAD, ALL PERTINENT PROCEDURES, SPECIFICATIONS AND CRITERIA SET FORTH WITHIN THE BASIC DRAWING WILL APPLY TO THE PROCEDURES DELINEATED IN THIS APPENDIX. ANY EXCEPTIONS TO THE BASIC PROCEDURES ARE SPECIFIED IN THIS APPENDIX.
- B. DIMENSIONS, CUBE AND WEIGHT OF A SKIDDED UNIT WILL VARY SLIGHTLY DEPENDING UPON THE ACTUAL DIMENSIONS OF THE BOXES AND THE WEIGHT OF THE SPECIFIC ITEM BEING UNITIZED.
- C. THE FOLLOWING DARCOM DRAWINGS ARE APPLICABLE FOR OUTLOADING AND STORAGE OF THE ITEMS COVERED BY THIS APPENDIX.

CARLOADING -----	DRAWING 19-48-4123-5PA 1003
TRUCKLOADING -----	DRAWING 19-48-4124-11PA1004
STORAGE -----	DRAWING 19-48-4125-1-2-14PA1003
- D. FOR METHOD OF SECURING A STRAP CUTTER TO THE SKIDDED UNIT, SEE DARCOM DRAWING 19-48-4127-20P1000.
- E. IF ITEMS COVERED HEREIN ARE UNITIZED PRIOR TO ISSUANCE OF THIS APPENDIX, THE BOXES NEED NOT BE REUNITIZED SOLELY TO CONFORM TO THIS APPENDIX.
- F. THE UNITIZATION PROCEDURES DEPICTED HEREIN MAY ALSO BE USED FOR UNITIZING 152 MM DUMMY CARTRIDGES WHEN IDENTIFIED BY DIFFERENT NATIONAL STOCK NUMBERS (NSN) THAN WHAT IS SHOWN ON THE TITLE PAGE, PROVIDED THE BOX PACK DOES NOT VARY FROM WHAT IS DELINEATED HEREIN.
- G. NOTE: A TYPE II SKID BASE IS NOT APPROVED FOR USE IN UNITIZING THESE ITEMS. SEE GENERAL NOTE "B" ON PAGE 2 OF THE BASIC PROCEDURES DRAWING 19-48-4138-20PA1000.
- H. WHEN THE UNIT LOAD DEPICTED AT LEFT IS TO BE USED FOR UNITIZING MARINE CORPS AMMUNITION, 1 LAYER OF BOXES MUST BE OMITTED; TIEDOWN STRAP LENGTHS MUST BE DECREASED TO 15'-2" AND 16'-0". THIS WILL RESULT IN AN OVERALL UNIT HEIGHT OF 41'-1/4", A GROSS UNIT WEIGHT OF 1,699, AND A UNIT CUBE OF 34.8 CU FT. ADDITIONALLY, THE UNIT LOAD MAY BE MODIFIED AS DESCRIBED WHEN BEING SHIPPED BY MILVAN OR COMMERCIAL INTERMODAL FREIGHT CONTAINER, CONVENTIONAL VAN TRAILER OR CONVENTIONAL OR HIGH-CAPACITY BOXCAR. THE DETERMINATION TO REDUCE THE LOAD BY A LAYER FOR TRANSPORTATION WILL BE MADE BY THE RESPONSIBLE COMMAND AND WILL BE BASED UPON ECONOMICS OF TRANSPORTATION AND HANDLING.

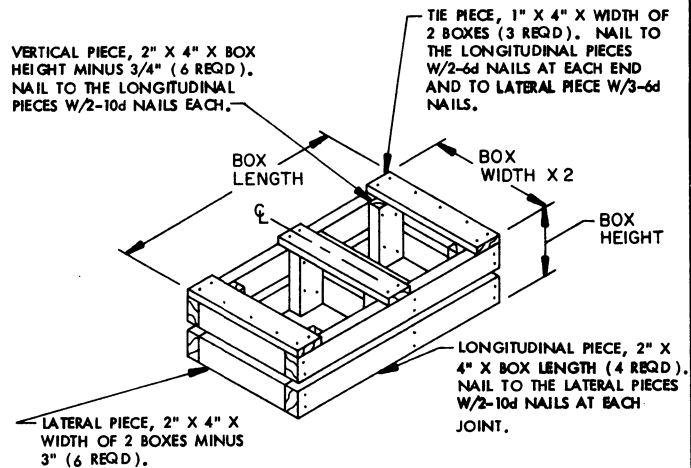
BILL OF MATERIAL

TYPE I SKID BASE, 20-3/8" W X 47-3/4" L	1 REQD	38 LBS
STEEL STRAPPING, 3/4"	68.33 REQD	4.88 LBS
SEAL FOR 3/4" STRAPPING	4 REQD	NIL



FILLER ASSEMBLY A

(FOR MINUS ONE BOX)



FILLER ASSEMBLY B

(FOR MINUS TWO BOXES)