

APPENDIX 15B

UNITIZATION PROCEDURES FOR BOXED AMMUNITION AND COMPONENTS ON SKIDDED BASES

CARTRIDGE, 106MM, PACKED 2 PER WOODEN BOX,
UNITIZED 15 BOXES PER TYPE I OR TYPE II
SKID BASE; APPROX BOX SIZE $44\frac{5}{8}$ " L X $12\frac{3}{4}$ " W
X $8\frac{7}{8}$ " H

SKIDDED UNIT DATA						
ITEMS INCLUDED		HAZARD CLASSIFICATION				WEIGHT (LBS)
NSN	DODIC	DOT CLASS	CG CLASS	QD CLASS	COMP GROUP	
1315-00-028-4791	C651	A	IV	1.1	E	1,961
00-684-3051	C654	—	—	—	—	1,961
00-926-4019	C651	A	IV	1.1	E	1,961
00-343-3613	C651	A	IV	1.1	E	1,961

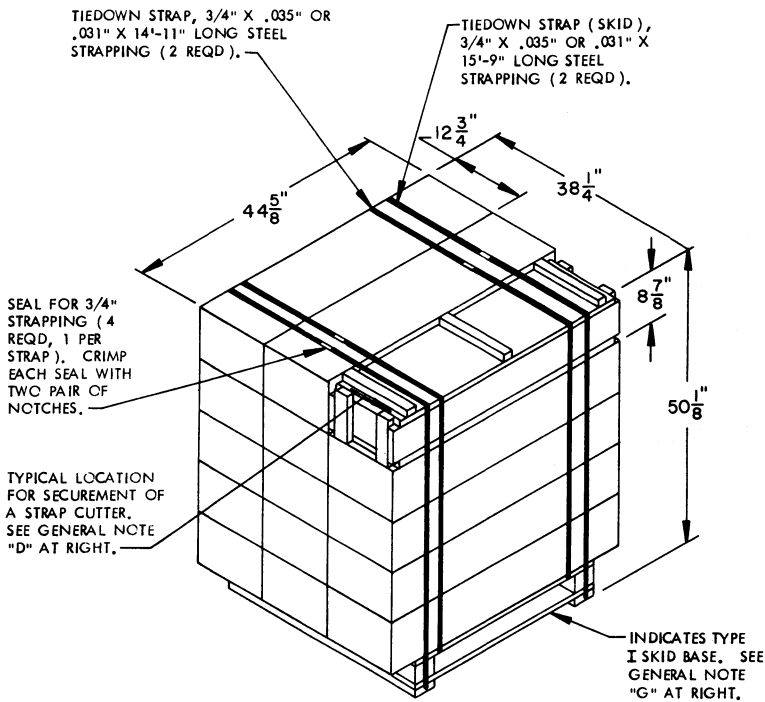
NOTICE: THIS APPENDIX CANNOT STAND ALONE BUT MUST BE USED IN CONJUNCTION WITH THE BASIC UNITIZATION PROCEDURES DRAWING 19-48-4138-20PA1000.

REVISIONS				DRAWN <i>[Signature]</i>	PROJ ENG <i>[Signature]</i>
				CHECKER <i>[Signature]</i>	LOG ENGR OFFICE <i>[Signature]</i>
APPROVED, U. S. ARMY ARMAMENT MATERIEL READINESS COMMAND					
				DARCOM-LEP <i>[Signature]</i>	DARCOM-TMD <i>[Signature]</i>
APPROVED BY ORDER OF COMMANDING GENERAL, U. S. ARMY MATERIEL DEVELOPMENT AND READINESS COMMAND (DARCOM)					
U. S. ARMY DEFENSE AMMUNITION CENTER AND SCHOOL					
U. S. ARMY DARCOM DRAWING					
MARCH 1983					
CLASS	DIVISION	DRAWING	FILE		
19	48	4138/ 15B	20PA 1000		

DO NOT SCALE

GENERAL NOTES

- A. THIS APPENDIX CANNOT STAND ALONE BUT MUST BE USED IN CONJUNCTION WITH THE BASIC UNITIZATION PROCEDURES DRAWING 19-48-4138-20PA1000. TO PRODUCE AN APPROVED UNIT LOAD, ALL PERTINENT PROCEDURES, SPECIFICATIONS AND CRITERIA SET FORTH WITHIN THE BASIC DRAWING WILL APPLY TO THE PROCEDURES DELINEATED IN THIS APPENDIX. ANY EXCEPTIONS TO THE BASIC PROCEDURES ARE SPECIFIED IN THIS APPENDIX.
- B. DIMENSIONS, CUBE AND WEIGHT OF A SKIDDED UNIT WILL VARY SLIGHTLY DEPENDING UPON THE ACTUAL DIMENSIONS OF THE BOXES AND THE WEIGHT OF THE SPECIFIC ITEM BEING UNITIZED.
- C. THE FOLLOWING DARCOM DRAWINGS ARE APPLICABLE FOR OUTLOADING AND STORAGE OF THE ITEMS COVERED BY THIS APPENDIX.
 CARLOADING ----- DRAWING 19-48-4123-5PA1003
 TRUCKLOADING ---- DRAWING 19-48-4124-11PA1004
 STORAGE ----- DRAWING 19-48-4125-1-2-14PA1003
- D. FOR METHOD OF SECURING A STRAP CUTTER TO THE SKIDDED UNIT, SEE DARCOM DRAWING 19-48-4127-20P1000.
- E. IF ITEMS COVERED HEREIN ARE UNITIZED PRIOR TO ISSUANCE OF THIS APPENDIX, THE BOXES NEED NOT BE REUNITIZED SOLELY TO CONFORM TO THIS APPENDIX.
- F. THE UNITIZING PROCEDURES DEPICTED HEREIN MAY ALSO BE USED FOR UNITIZING 106MM CARTRIDGES WHEN IDENTIFIED BY DIFFERENT NATIONAL STOCK NUMBERS (NSN) THAN WHAT IS SHOWN ON THE TITLE PAGE, PROVIDED THE BOX PACK DOES NOT VARY FROM WHAT IS DELINEATED HEREIN. THE EXPLOSIVE CLASSIFICATION OF OTHER ITEMS MAY BE DIFFERENT THAN WHAT IS SHOWN.
- G. **NOTE:** IF MORE COST EFFECTIVE, A TYPE II SKID BASE MAY BE USED IN LIEU OF THE TYPE I SKID BASE DEPICTED HEREIN. HOWEVER, A TYPE II SKID BASE MUST BE CONSTRUCTED IN ACCORDANCE WITH THE APPLICABLE SPECIFICATIONS OF THE BASIC PROCEDURE DRAWING AND ALL SPECIFIED STRAPPING MUST BE APPLIED IN ACCORDANCE WITH THE "UNIT ASSEMBLY ON TYPE II SKID BASE" DETAIL SHOWN ON PAGE 8 OF THE BASIC PROCEDURE DRAWING.
- H. WHEN THE UNIT LOAD DEPICTED AT LEFT IS TO BE USED FOR UNITIZING MARINE CORPS AMMUNITION, ONE LAYER OF BOXES MUST BE OMITTED AND TIEDOWN STRAP LENGTHS MUST BE DECREASED TO 13'-5" AND 14'-3". THIS WILL RESULT IN AN OVERALL UNIT HEIGHT OF 41'-1/4", A GROSS UNIT WEIGHT OF 1,576 POUNDS, AND A UNIT CUBE OF 40.7 CUBIC FEET. ADDITIONALLY, THE UNIT LOAD MAY BE MODIFIED AS DESCRIBED WHEN BEING SHIPPED BY MILVAN OR COMMERCIAL INTERMODAL FREIGHT CONTAINER, CONVENTIONAL VAN TRAILER OR CONVENTIONAL OR HIGH-CAPACITY BOXCAR. THE DETERMINATION TO REDUCE THE LOAD BY A LAYER FOR TRANSPORTATION WILL BE MADE BY THE RESPONSIBLE COMMAND AND WILL BE BASED UPON ECONOMICS OF TRANSPORTATION AND HANDLING.



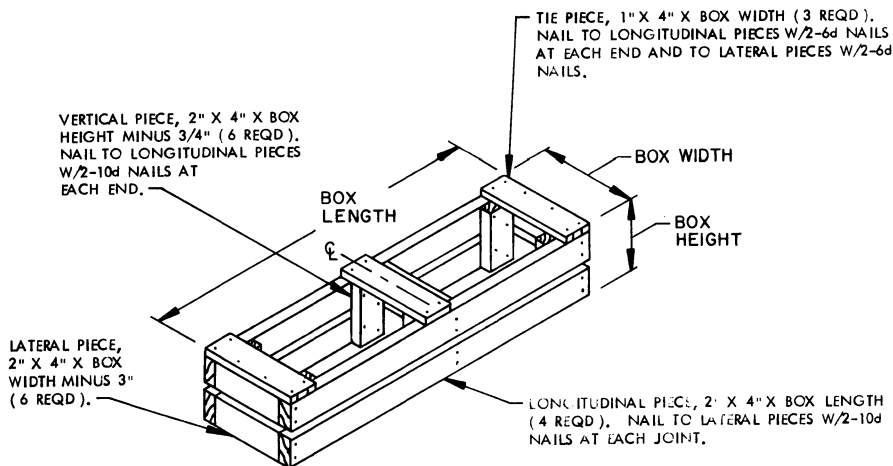
SKIDDED UNIT

SEE GENERAL NOTE "B" AT RIGHT.

15 BOXES (106MM CARTRIDGE; 2 PER BOX) @ 128 LBS	-----	1,920 LBS (APPROX)
DUNNAGE	-----	5 LBS
SKID BASE	-----	36 LBS
TOTAL WEIGHT	-----	1,961 LBS (APPROX)
CUBE	-----	49.5 CUBIC FEET (APPROX)

BILL OF MATERIAL

TYPE I SKID BASE, 35" W X 37-1/4" L	-----	1 REQD	-----	36 LBS
STEEL STRAPPING, 3/4"	-----	61.33' REQD	-----	4.38 LBS
SEAL FOR 3/4" STRAPPING	-----	4 REQD	-----	NIL



FILLER ASSEMBLY

(FOR MINUS ONE BOX)