

APPENDIX 12A

UNITIZATION PROCEDURES FOR BOXED AMMUNITION AND COMPONENTS ON SKIDDED BASES

CARTRIDGE, IGNITION, M6, FOR 8MM CARTRIDGE,
M56, M57, AND M301, PACKED 1200 PER WOODEN
BOX, UNITIZED 24 BOXES PER TYPE I SKID BASE;
APPROX BOX SIZE $28\frac{1}{4}''$ L X $8\frac{5}{8}''$ W X $8\frac{5}{8}''$ H

SKIDDED UNIT DATA						
ITEMS INCLUDED		HAZARD CLASSIFICATION				WEIGHT
NSN	DODIC	DOT CLASS	CG CLASS	QD CLASS	COMP GROUP	(LBS)
1315-00-028-4957	C242	C	I	1.4	G	1,247

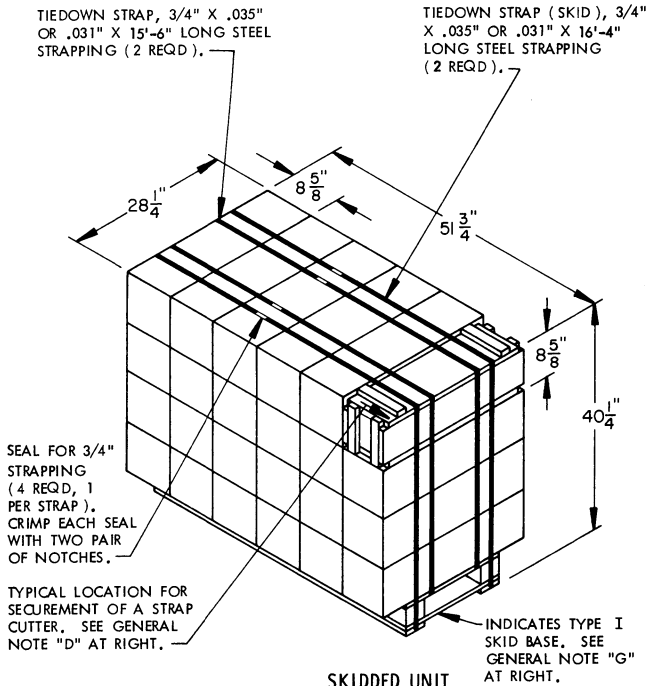
NOTICE: THIS APPENDIX CANNOT STAND ALONE BUT MUST BE USED IN CONJUNCTION WITH THE BASIC UNITIZATION PROCEDURES DRAWING 19-48-4138-20PA1000.

REVISIONS				DRAFTSMAN <i>GRG</i>	PROJ ENG <i>Amr</i>
				CHECKER <i>RSN/GRG</i>	LOG ENGRG OFFICE <i>Amr</i>
				APPROVED, U. S. ARMY ARMAMENT MATERIAL READINESS COMMAND	
		/		<i>Keith H. Benton</i> <i>D. J. Fetter</i> <small>DRBAR - M40 DRBAR - T20</small>	
		/		APPROVED BY ORDER OF COMMANDING GENERAL, U. S. ARMY MATERIEL DEVELOPMENT AND READINESS COMMAND (BARCOM)	
		/		<i>John J. Syndt</i> <small>U. S. ARMY DEFENSE ADMINISTRATION CENTER AND SCHOOL</small>	
		/		U. S. ARMY DARCOM DRAWING	
		/		DECEMBER 1980	
		/		CLASS	DIVISION
		/		DRAWING	FILE
		/		19	48
		/		4138/ 12A	20PA 1000

DO NOT SCALE

GENERAL NOTES

- A. THIS APPENDIX CANNOT STAND ALONE BUT MUST BE USED IN CONJUNCTION WITH THE BASIC UNITIZATION PROCEDURES DRAWING 19-48-4138-20PA1000. TO PRODUCE AN APPROVED UNIT LOAD, ALL PERTINENT PROCEDURES, SPECIFICATIONS AND CRITERIA SET FORTH WITHIN THE BASIC DRAWING WILL APPLY TO THE PROCEDURES DELINEATED IN THIS APPENDIX. ANY EXCEPTIONS TO THE BASIC PROCEDURES ARE SPECIFIED IN THIS APPENDIX.
- B. DIMENSIONS, CUBE AND WEIGHT OF A SKIDDED UNIT WILL VARY SLIGHTLY DEPENDING UPON THE ACTUAL DIMENSIONS OF THE BOXES AND THE WEIGHT OF THE SPECIFIC ITEM BEING UNITIZED.
- C. THE FOLLOWING DARCOM DRAWINGS ARE APPLICABLE FOR OUTLOADING AND STORAGE OF THE ITEMS COVERED BY THIS APPENDIX.
 CARLOADING ----- DRAWING 19-48-4123-5PA1003
 TRUCKLOADING ----- DRAWING 19-48-4124-11PA1004
 STORAGE ----- DRAWING 19-48-4125-1-2-14PA1003
- D. FOR METHOD OF SECURING A STRAP CUTTER TO THE SKIDDED UNIT, SEE DARCOM DRAWING 19-48-4127-20P1000.
- E. IF ITEMS COVERED HEREIN ARE UNITIZED PRIOR TO ISSUANCE OF THIS APPENDIX, THE BOXES NEED NOT BE REUNITIZED SOLELY TO CONFORM TO THIS APPENDIX.
- F. THE UNITIZATION PROCEDURES DEPICTED HEREIN MAY ALSO BE USED FOR UNITIZING M6 IGNITION CARTRIDGES WHEN IDENTIFIED BY DIFFERENT NATIONAL STOCK NUMBERS (NSN) THAN WHAT IS SHOWN ON THE TITLE PAGE, PROVIDED THE BOX PACK DOES NOT VARY FROM WHAT IS DELINEATED HEREIN. THE EXPLOSIVE CLASSIFICATION OF OTHER ITEMS MAY BE DIFFERENT THAN WHAT IS SHOWN.
- G. NOTE: A TYPE II SKID BASE IS NOT APPROVED FOR USE IN UNITIZING THESE ITEMS. SEE GENERAL NOTE "B" ON PAGE 2 OF THE BASIC PROCEDURES DRAWING 19-48-4138-20PA1000.



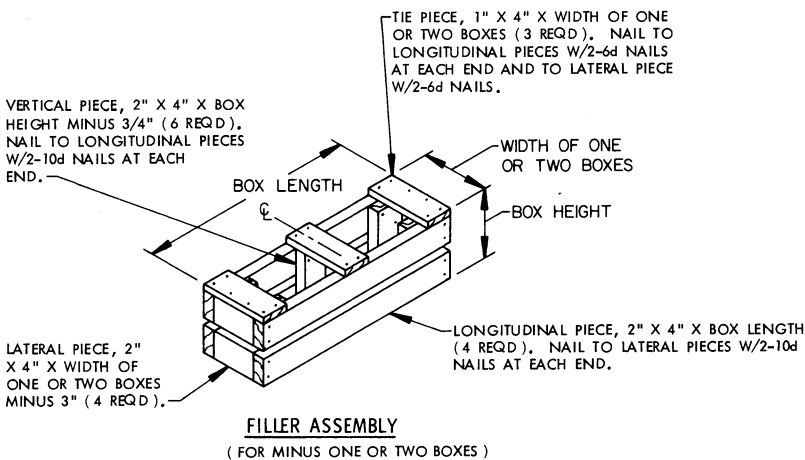
SKIDDED UNIT

SEE GENERAL NOTE "B" AT RIGHT.

24 BOXES (M6 IGNITION CARTRIDGE; 1200 PER BOX) @ 50 LBS --	1200 LBS (APPROX)
DUNNAGE -----	5 LBS
SKID BASE -----	42 LBS
TOTAL WEIGHT -----	1247 LBS (APPROX)
CUBE -----	34.1 CU FT (APPROX)

BILL OF MATERIAL

TYPE I SKID BASE, 18-3/4" W X 50-3/4" L --	1 REQD	42 LBS
STEEL STRAPPING, 3/4" -----	63.67' REQD	4.55 LBS
SEAL FOR 3/4" STRAPPING -----	4 REQD	NIL



FILLER ASSEMBLY

(FOR MINUS ONE OR TWO BOXES)