

APPENDIX 123

UNITIZATION PROCEDURES FOR BOXED AMMUNITION AND COMPONENTS ON SKIDDED BASES

DESTROYER, DOCUMENT, M4, PACKED IN METAL
DRUM, UNITIZED 2 DRUMS PER $25\frac{3}{4}$ " X $50\frac{1}{2}$ "
SPECIAL TYPE II SKID BASE; DRUM SIZE 24"
DIA X $34\frac{1}{2}$ " H

SKIDDED UNIT DATA						
ITEMS INCLUDED		HAZARD CLASSIFICATION ^①				WEIGHT (LBS)
NSN	DODIC	DOT CLASS	CG CLASS	QD CLASS	GROUP	
1375- 00-078-0450	M814	B	II-C	1,3	G	660

REVISION

REVISION NO. 1, DATED JUNE 1988, CONSISTS OF:

1. CHANGING DRUM DIAMETER.
2. UPDATING THE SKIDDED UNIT TO CONFORM TO 1. ABOVE.

NOTICE: THIS APPENDIX CANNOT STAND ALONE BUT MUST
BE USED IN CONJUNCTION WITH THE BASIC UNITIZATION
PROCEDURES DRAWING 19-48-4079-20PM1002.

^① HAZARD CLASSIFICATION DATA CONTAINED IN THE ABOVE
CHART IS FOR GUIDANCE AND INFORMATIONAL PURPOSES ONLY.
VERIFICATION OF THE SPECIFIED DATA SHOULD BE MADE BY
CONSULTING THE MOST RECENT JOINT HAZARD CLASSIFICATION
SYSTEM LISTING OR OTHER APPROVED LISTING (S).

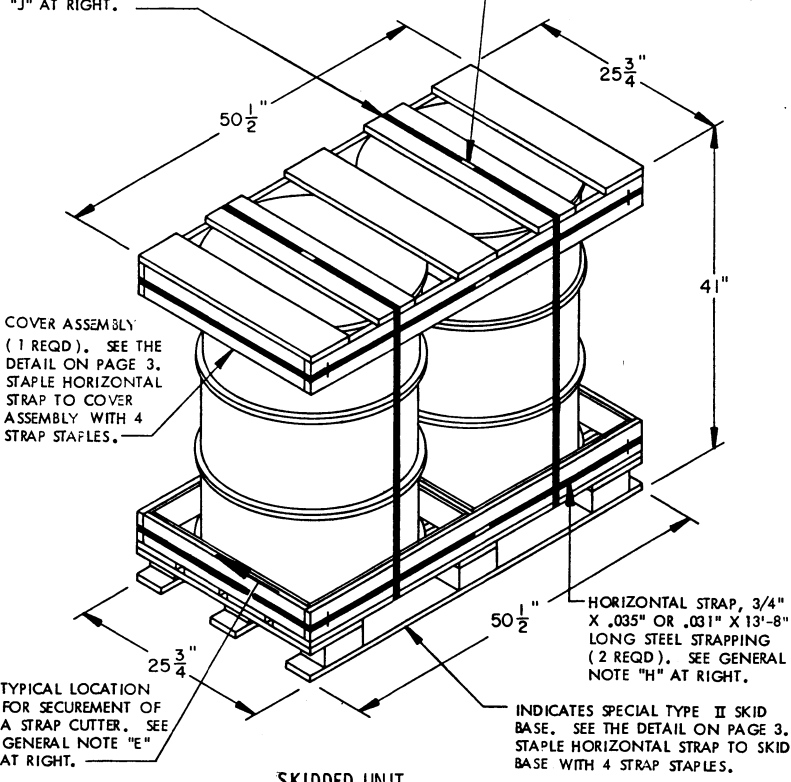
DO NOT SCALE

REVISIONS				DRAFTERMAN S.D. / BT	PROJ. ENG. WRF/hew	LOG ENGRG OFFICER Wille
1	JUN 88	WRF WJE	D. Fisher SNCAR-ESK Wille	J.A. Boyd AMENIC-ESK	GEG	Wille
APPROVED, U. S. ARMY ARMAMENT MATERIEL READINESS COMMAND						
ONBAR-LEP ONBAR-TMD						
APPROVED BY ORDER OF COMMANDING GENERAL, U. S. ARMY MATERIEL DEVELOPMENT AND READINESS COMMAND (DARCOM)						
John H. Sygal Jr. U. S. ARMY DEFENSE AMMUNITION CENTER AND SCHOOL						
U. S. ARMY DARCOM DRAWING						
NOVEMBER 1981						
CLASS	DIVISION	DRAWING	FILE			
19	48	4138/ 123	20 PA 1000			

TIEDOWN STRAP, 3/4" X .035" OR .031" X 11'-4" LONG STEEL STRAPPING (2 REQD). SEE GENERAL NOTE "J" AT RIGHT.

SEAL FOR 3/4" STRAPPING (4 REQD, 1 PER STRAP). CRIMP EACH SEAL WITH TWO PAIR OF NOTCHES.

GENERAL NOTES

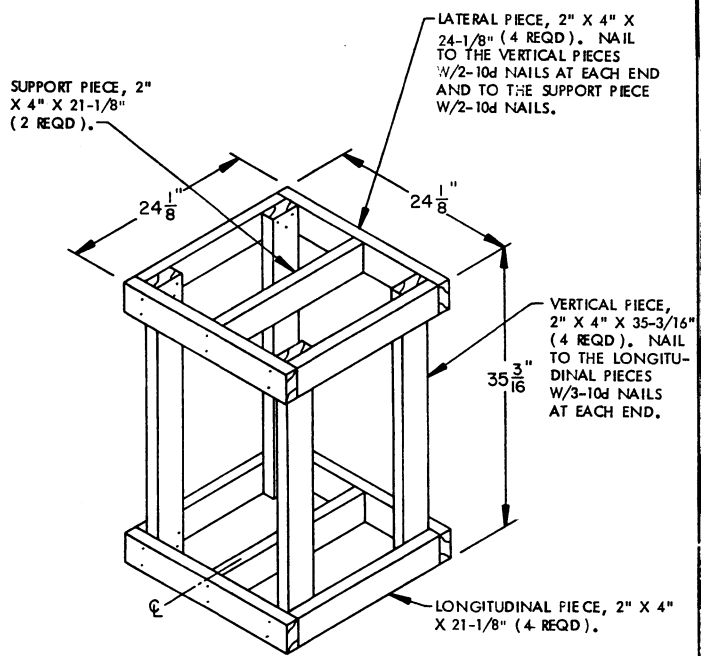


- A. THIS APPENDIX CANNOT STAND ALONE BUT MUST BE USED IN CONJUNCTION WITH THE BASIC UNITIZATION PROCEDURES DRAWING 19-48-4138-20PA1000. TO PRODUCE AN APPROVED UNIT LOAD, ALL PERTINENT PROCEDURES, SPECIFICATIONS AND CRITERIA SET FORTH WITHIN THE BASIC DRAWING WILL APPLY TO THE PROCEDURES DELINEATED IN THIS APPENDIX. ANY EXCEPTIONS TO THE BASIC PROCEDURES ARE SPECIFIED IN THIS APPENDIX.
- B. THE UNITIZATION PROCEDURES DEPICTED IN THIS DRAWING WILL REQUIRE THE USE OF A "SPECIAL TYPE II SKID BASE". SPECIFICATIONS PERTAINING TO THE TYPE II SKID BASE DELINEATED IN THE BASIC PROCEDURES WILL BE FOLLOWED, AS APPLICABLE. SEE THE "SPECIAL TYPE II SKID BASE" DETAIL AND KEY NUMBERS ON PAGE 3.
- C. ONLY THE "SPECIAL TYPE II SKID BASE" WILL BE USED TO ASSEMBLE THIS UNIT. THE "W" DIMENSION WILL BE 50-1/4" AND THE "L" DIMENSION WILL BE 25-3/4". CAUTION: A TYPE I SKID BASE WILL NOT BE USED.
- D. THE FOLLOWING AMC (DARCOM) DRAWINGS ARE APPLICABLE FOR OUTLOADING AND STORAGE OF THE ITEMS COVERED BY THIS APPENDIX.
 - CARLOADING ----- DRAWING 19-48-4123-5PA1003
 - TRUCKLOADING ---- DRAWING 19-48-4124-11PA1004
 - STORAGE ----- DRAWING 19-48-4125-1-2-14PA1003
- E. FOR METHOD OF SECURING A STRAP CUTTER TO THE SKIDDED UNIT, SEE DARCOM DRAWING 19-48-4127-20P1000.
- F. THE UNITIZATION PROCEDURES DEPICTED HEREIN MAY ALSO BE USED FOR UNITIZING DOCUMENT DESTROYERS WHEN IDENTIFIED BY DIFFERENT NATIONAL STOCK NUMBERS (NSN) THAN WHAT IS SHOWN ON THE TITLE PAGE, PROVIDED THE DRUM PACK DOES NOT VARY FROM WHAT IS DELINEATED HEREIN.
- G. DIMENSIONS, CUBE AND WEIGHT OF A SKIDDED UNIT WILL VARY SLIGHTLY DEPENDING UPON THE ACTUAL DIMENSIONS OF THE DRUMS AND THE WEIGHT OF THE SPECIFIC ITEM BEING UNITIZED.
- H. INSTALL EACH HORIZONTAL STRAP TO ENCIRCLE EACH DUNNAGE ASSEMBLY. HORIZONTAL STRAPS MUST BE TENSIONED AND SEALED PRIOR TO APPLICATION OF TIEDOWN STRAPS.
- J. INSTALL EACH TIEDOWN STRAP TO PASS UNDER THE TOP DECK BOARDS OF THE SKID BASE AND TO BE LOCATED AS SHOWN. TIEDOWN STRAPS WILL NOT BE APPLIED UNTIL THE HORIZONTAL STRAPS HAVE BEEN TENSIONED AND SEALED.

SKIDDED UNIT
 SEE GENERAL NOTE "B" AT RIGHT.

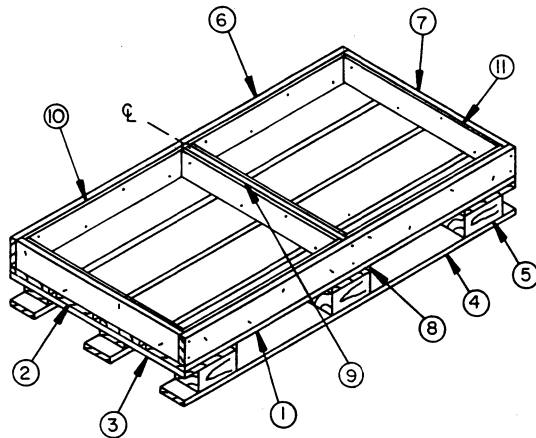
2 DRUMS (SIMULATOR; 1 PER DRUM) @ 275 LBS	-----	550	LBS (APPROX)
DUNNAGE	-----	25	LBS
SKID BASE	-----	85	LBS
TOTAL WEIGHT		-----	660 LBS (APPROX)
CUBE		-----	30.7 CU FT (APPROX)

BILL OF MATERIAL		
LUMBER	LINEAR FEET	BOARD FEET
1" X 4"	14.44	4.81
1" X 6"	10.73	5.36
NAILS		POUNDS
6d (2")	43	0.28
SKID BASE, 25-3/4" X 50-1/4"	1 REQD	85 LBS
STEEL STRAPPING, 3/4"	50.00' REQD	3.57 LBS
SEAL FOR 3/4" STRAPPING	4 REQD	NIL
STAPLE	8 REQD	NIL



FILLER ASSEMBLY
(FOR MINUS ONE DRUM)

NOTE: WHEN A FILLER ASSEMBLY IS USED IN A SKIDDED UNIT, FOUR FILLER PIECES MUST BE OMITTED FROM ONE SIDE OF THE SPECIAL TYPE II SKID BASE.



SPECIAL TYPE II SKID BASE

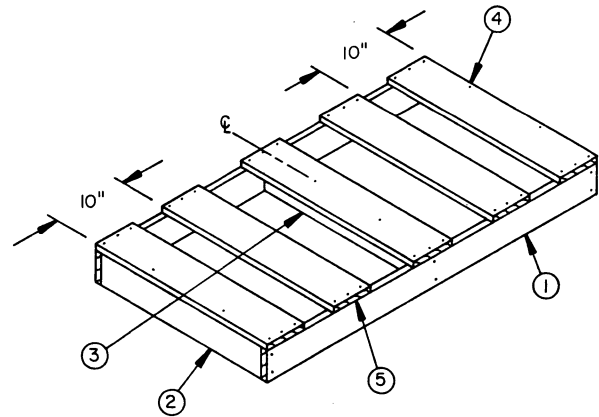
(SEE KEY NUMBERS AT RIGHT AND GENERAL NOTE "B" ON PAGE 2.)

KEY NUMBERS

- ① TOP DECK BOARD, 1" X 6" X 50-1/2" (2 REQD). NAIL TO LONGITUDINAL PIECE W/4-6d NAILS AND TO LATERAL PIECES W/2-6d NAILS AT EACH END. POSITION AS SHOWN AND NAIL THRU STRINGER PIECE INTO POST W/3 NAILS (TYPE II - STYLE 18) 3" TO 3-1/4" LONG X 0.135" DIA. AT EACH END USING A STAGGERED NAILING PATTERN.
- ② TOP DECK BOARD, 1" X 6" X 50-1/2" (2 REQD). NAIL TO LATERAL PIECES W/2-6d NAILS AT EACH END. POSITION AS SHOWN AND NAIL TO STRINGER PIECES W/3 NAILS (TYPE II - STYLE 18) 1-1/2" LONG X 0.120" DIA. AT EACH JOINT USING A STAGGERED NAILING PATTERN. NOTE: USE 3" TO 3-1/4" X 0.135" DIA. NAILS TO PENETRATE THE CENTER POST.
- ③ OUTSIDE STRINGER, 1" X 8" X 25-3/4" (2 REQD). POSITION AS SHOWN.
- ④ RUNNER, 1" X 4" X 50-1/2" (3 REQD). POSITION AS SHOWN AND NAIL TO POST W/4 NAILS (TYPE II - STYLE 18) 2-1/4" LONG X 0.120" DIA. AT EACH JOINT USING A STAGGERED NAILING PATTERN.
- ⑤ POST, 3-1/2" WIDE X 2-3/4" HIGH X 5-1/2" LONG (9 REQD).
- ⑥ LONGITUDINAL PIECE, 1" X 4" X 50-1/2" (2 REQD). NAIL TO LATERAL PIECES W/2-6d NAILS AT EACH END AND TO SPACER PIECE W/2-6d NAILS.
- ⑦ LATERAL PIECE, 1" X 4" X 24-1/4" (2 REQD).
- ⑧ CENTER STRINGER, 1" X 6" X 25-3/4" (1 REQD).
- ⑨ SPACER PIECE, 1" X 4" X 24-1/4" (1 REQD). POSITION AS SHOWN.
- ⑩ FILL PIECE, PLYWOOD, 1/4" X 3-1/2" X 24-1/8" (4 REQD). NAIL TO LONGITUDINAL PIECE W/4-4d NAILS AND CLINCH.
- ⑪ FILL PIECE, PLYWOOD, 1/4" X 3-1/2" X 23-3/4" (4 REQD). NAIL TO LATERAL PIECE OR SPACER PIECE W/4-4d NAILS AND CLINCH.

KEY NUMBERS

- ① LONGITUDINAL PIECE, 1" X 4" X 50-1/2" (2 REQD). NAIL TO THE LATERAL PIECES W/2-6d NAILS AT EACH END AND TO THE SPACER PIECE W/2-6d NAILS.
- ② LATERAL PIECE, 1" X 4" X 24-1/4" (2 REQD).
- ③ SPACER PIECE, 1" X 4" X 24-1/4" (1 REQD). POSITION AS SHOWN.
- ④ TIE PIECE, 1" X 6" X 25-3/4" (2 REQD). NAIL TO THE LATERAL PIECE W/2-6d NAILS AND TO THE LONGITUDINAL PIECES W/3-6d NAILS AT EACH END.
- ⑤ TIE PIECE, 1" X 6" X 25-3/4" (3 REQD). NAIL TO THE LONGITUDINAL PIECES W/3-6d NAILS AT EACH END. AND TO THE SPACER PIECE W/2-6d NAILS, AS APPLICABLE.



COVER ASSEMBLY

(SEE KEY NUMBERS AT LEFT)

