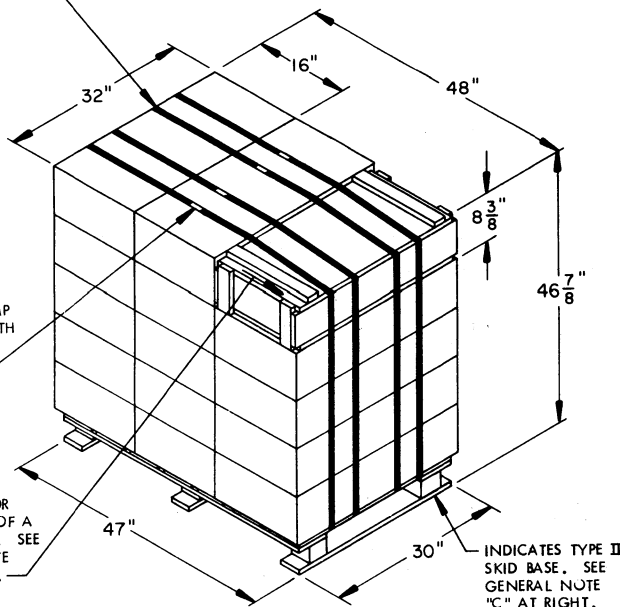


TIEDOWN STRAP, 3/4" X .035" OR .031" X 16'-0" LONG STEEL STRAPPING (4 REQD).

SEAL FOR 3/4" STRAPPING (4 REQD, 1 PER STRAP). CRIMP EACH SEAL WITH TWO PAIR OF NOTCHES.

TYPICAL LOCATION FOR SECUREMENT OF A STRAP CUTTER. SEE GENERAL NOTE "F" AT RIGHT.



SKIDDED UNIT

SEE GENERAL NOTE "B" AT RIGHT.

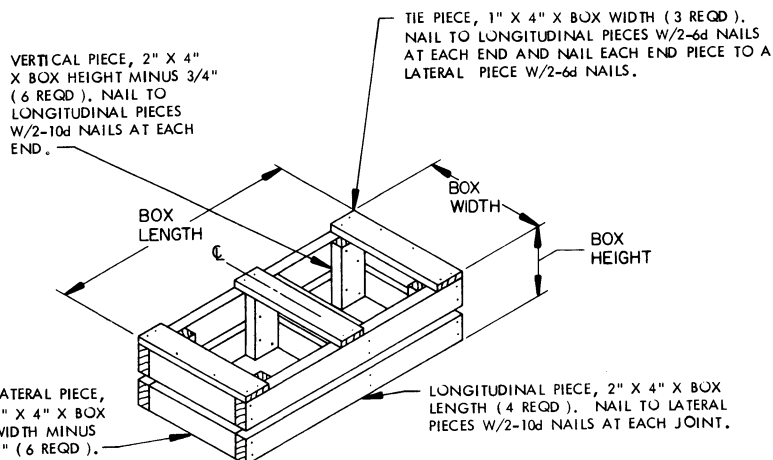
15 BOXES OF DEMOLITION CHARGES (2 PER BOX) @ 67 LBS.....	1005 LBS (APPROX)
DUNNAGE	5 LBS
SKID BASE	33 LBS
<hr/>	
TOTAL WEIGHT	1043 LBS (APPROX)
CUBE	41.7 CU FT (APPROX)

BILL OF MATERIAL

TYPE II SKID BASE, 30" W X 47" L	1 REQD	33 LBS
STEEL STRAPPING, 3/4"	64.00' REQD	4.57 LBS
SEAL FOR 3/4" STRAPPING	4 REQD	NIL

GENERAL NOTES

- A. THIS APPENDIX CANNOT STAND ALONE BUT MUST BE USED IN CONJUNCTION WITH THE BASIC UNITIZATION PROCEDURES DRAWING 19-48-4138-20PA1000. TO PRODUCE AN APPROVED UNIT LOAD, ALL PERTINENT PROCEDURES, SPECIFICATIONS AND CRITERIA SET FORTH WITHIN THE BASIC DRAWING WILL APPLY TO THE PROCEDURES DELINEATED IN THIS APPENDIX. ANY EXCEPTIONS TO THE BASIC PROCEDURES ARE SPECIFIED IN THIS APPENDIX.
- B. DIMENSIONS, CUBE AND WEIGHT OF A SKIDDED UNIT WILL VARY SLIGHTLY DEPENDING UPON THE ACTUAL DIMENSIONS OF THE BOXES AND THE WEIGHT OF THE SPECIFIC ITEM BEING UNITIZED.
- C. ONLY A TYPE II SKID BASE WILL BE USED TO ASSEMBLE THIS UNIT. THE "W" DIMENSION OF THE SKID BASE WILL BE 30" AND THE "L" DIMENSION WILL BE 47". NOTE: A TYPE I SKID BASE IS NOT APPROVED FOR USE IN UNITIZING THIS ITEM.
- D. WHEN A FILLER ASSEMBLY IS USED IN A UNIT LOAD, THE TIEDOWN STRAPS WILL BE STAPLED TO THE TOP LONGITUDINAL PIECES OF THE ASSEMBLY.
- E. THE FOLLOWING DARCOM DRAWINGS ARE APPLICABLE FOR OUT-LOADING AND STORAGE OF THE ITEMS COVERED BY THIS APPENDIX.
 - CARLOADING ----- DRAWING 19-48-4123-5PA1003
 - TRUCKLOADING ----- DRAWING 19-48-4124-11PA1004
 - STORAGE ----- DRAWING 19-48-4125-1-2-3-4-14-22PA1003
- F. FOR METHOD OF SECURING A STRAP CUTTER TO THE SKIDDED UNIT, SEE DARCOM DRAWING 19-48-4127-20P1000.
- G. IF ITEMS COVERED HEREIN ARE UNITIZED PRIOR TO ISSUANCE OF THIS APPENDIX, THE BOXES NEED NOT BE REUNITIZED SOLELY TO CONFORM TO THIS APPENDIX.
- H. THE UNITIZATION PROCEDURES DEPICTED HEREIN MAY ALSO BE USED FOR UNITIZING DEMOLITION CHARGES WHEN IDENTIFIED BY DIFFERENT NATIONAL STOCK NUMBERS (NSN) THAN WHAT IS SHOWN ON THE TITLE PAGE, PROVIDED THE BOX PACK DOES NOT VARY FROM WHAT IS DELINEATED HEREIN. THE EXPLOSIVE CLASSIFICATION OF OTHER ITEMS MAY BE DIFFERENT THAT WHAT IS SHOWN.
- J. WHEN THE UNIT LOAD DEPICTED AT LEFT IS TO BE USED FOR UNITIZING MARINE CORPS AMMUNITION, ONE LAYER OF BOXES MUST BE OMITTED, TIEDOWN STRAP LENGTHS MUST BE DECREASED TO 14'-7". THIS WILL RESULT IN AN OVERALL UNIT HEIGHT OF 38-1/2", A GROSS UNIT WEIGHT OF 842 POUNDS, AND A UNIT CUBE OF 34.2 CUBIC FEET. ADDITIONALLY, THE UNIT LOAD MAY BE MODIFIED AS DESCRIBED WHEN BEING SHIPPED BY MILVAN OR COMMERCIAL INTERMODAL FREIGHT CONTAINER, CONVENTIONAL VAN TRAILER OR CONVENTIONAL OR HIGH-CAPACITY BOXCAR. THE DETERMINATION TO REDUCE THE LOAD BY A LAYER FOR TRANSPORTATION WILL BE MADE BY THE RESPONSIBLE COMMAND AND WILL BE BASED UPON ECONOMICS OF TRANSPORTATION AND HANDLING.



FILLER ASSEMBLY

(FOR MINUS ONE BOX)