

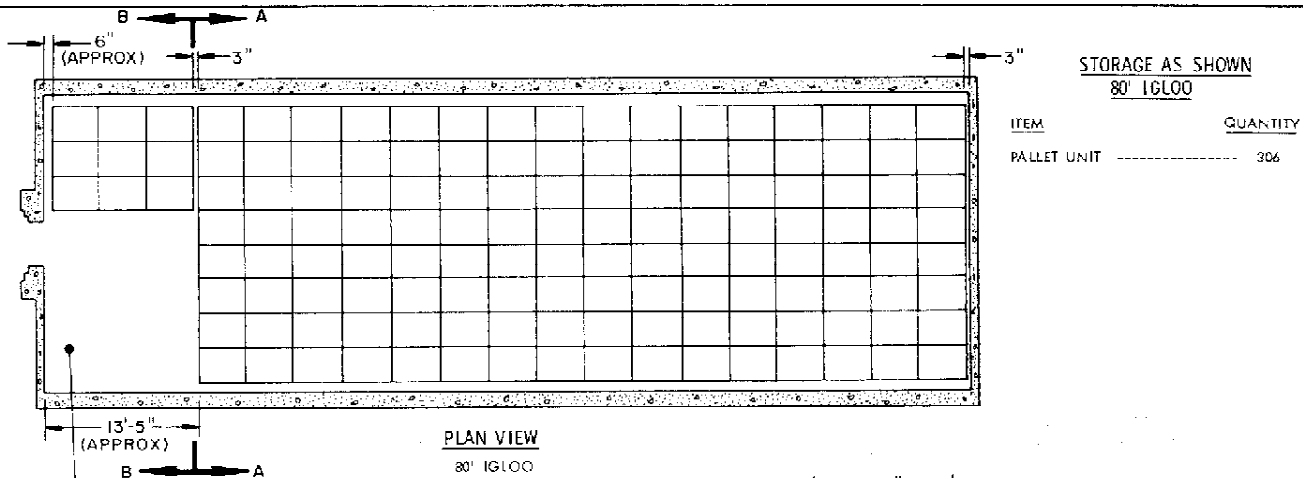
STORAGE IN 60' & 80' IGLOO AND 80' STRADLEY MAGAZINES OF THE 152MM CARTRIDGE, M41A3, PACKED IN A CYLINDRICAL METAL CONTAINER AND PALLETIZED HORIZONTALLY, 20 PER 35" BY 45-1/2" 4-WAY ENTRY PALLET

INDEX

ITEM	PAGE (S)
GENERAL NOTES -----	3
IGLOO STORAGE PROCEDURES -----	2,3
STRADLEY STORAGE PROCEDURES -----	4,5
DETAILS -----	6

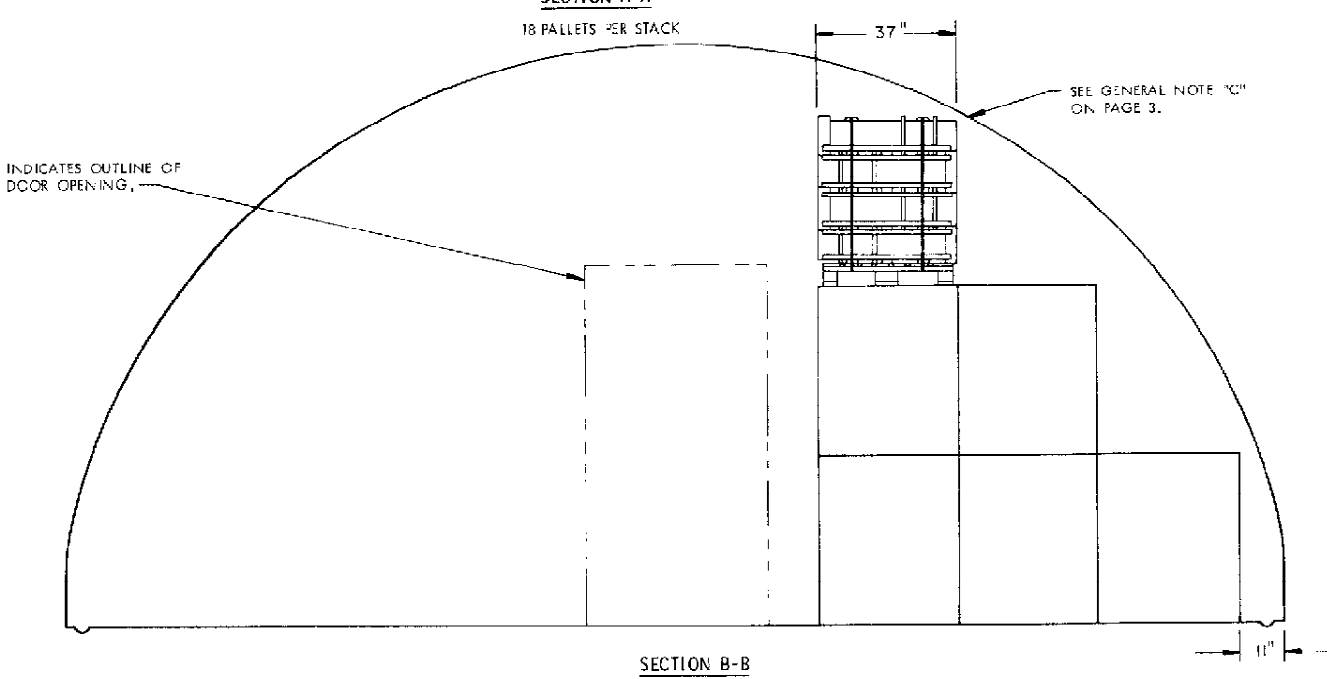
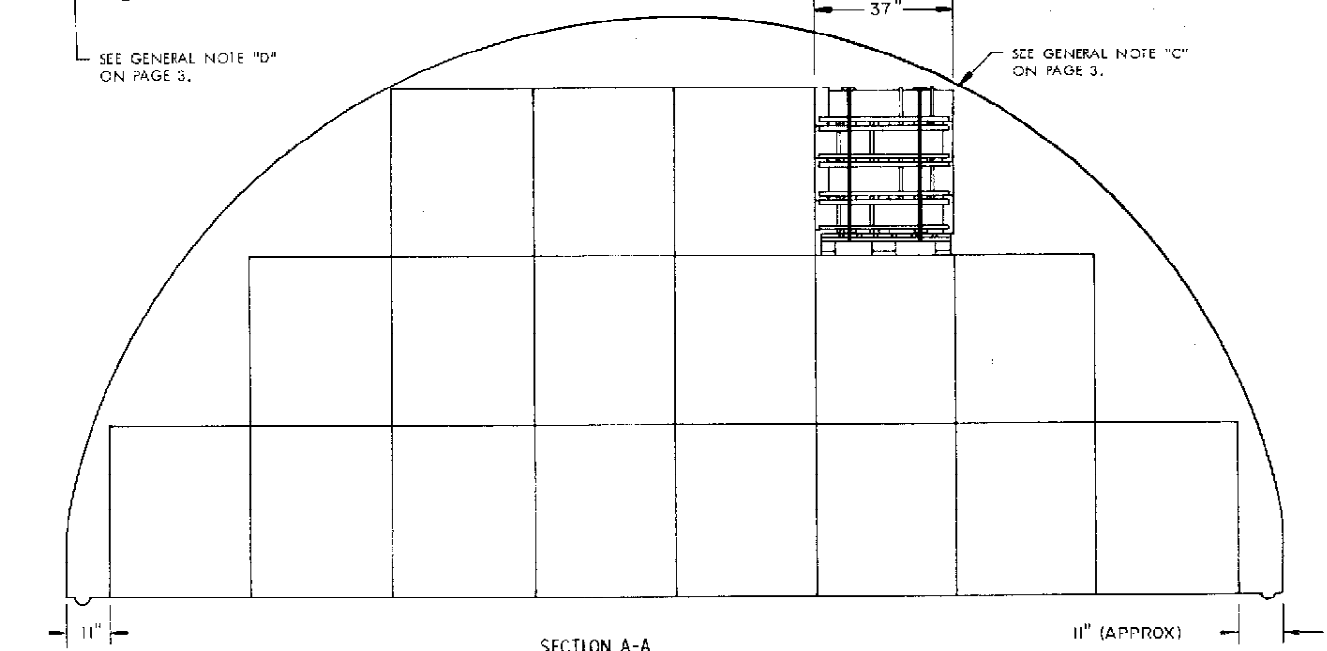
REVISIONS		DRAFTSMAN	PROJ ENG
		<i>mek</i>	<i>JDS/llw</i>
		CHECKER	LOG RECORD OFFICER
		<i>JDS</i>	<i>John Spid</i>
		APPROVED	
		<i>Robert V. Smith</i>	
		U.S. ARMY ARMOR CENTER	
		APPROVED BY ORDER OF COMMANDING GENERAL	
		U. S. ARMY MATERIEL COMMAND	
		<i>W. H. Elmer</i>	
		U.S. ARMY MATERIEL COMMAND	
		SEPTEMBER 1975	
		CLASS	DIVISION
		19	48
		DRAWING	FILE
		4137	1-14 PM 1002

DO NOT SCALE



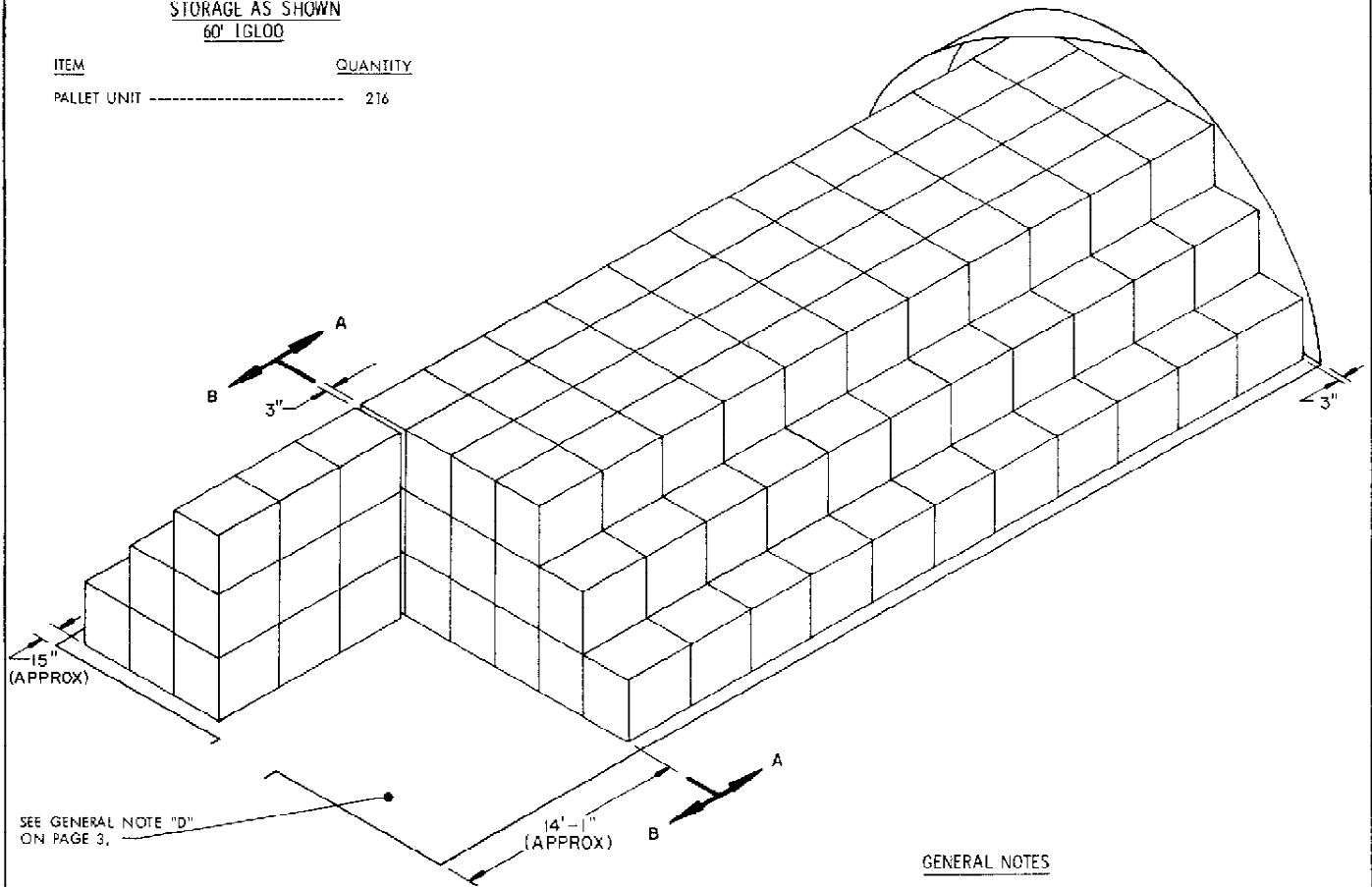
STORAGE AS SHOWN
80' IGLOO

ITEM	QUANTITY
PALLET UNIT	306



STORAGE AS SHOWN
60' IGLOO

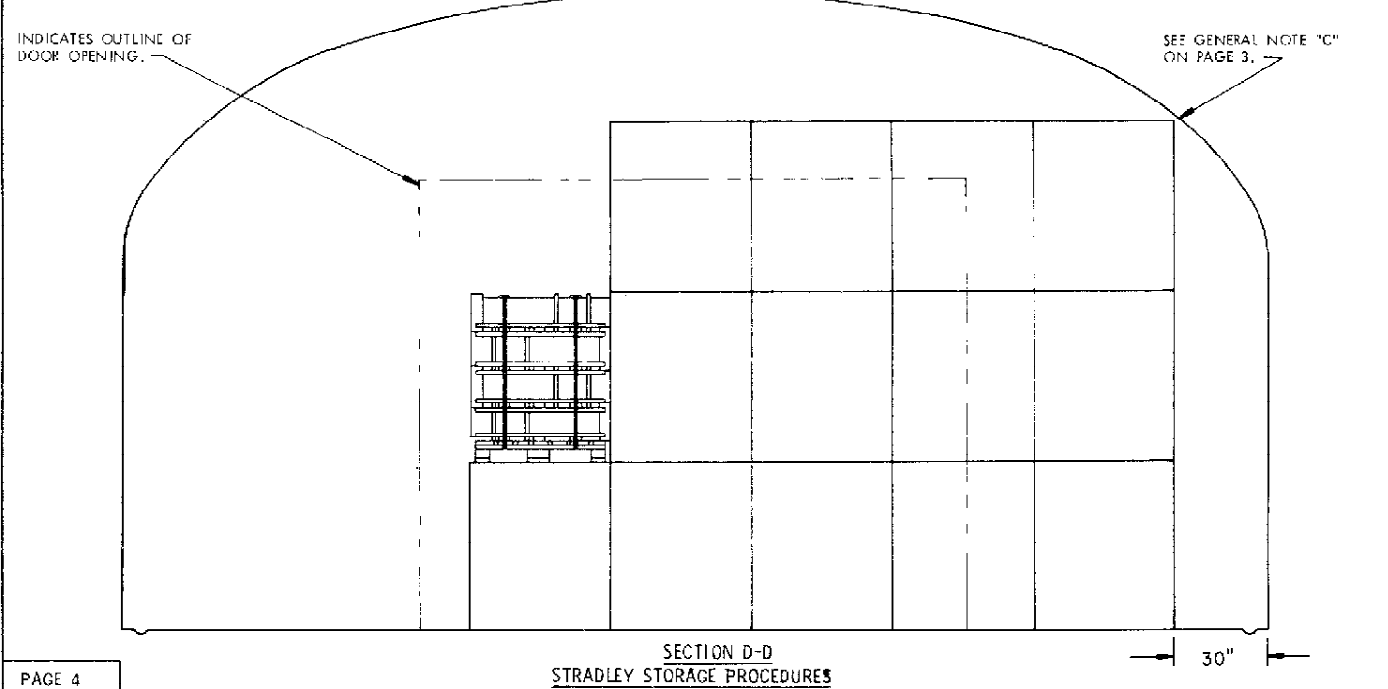
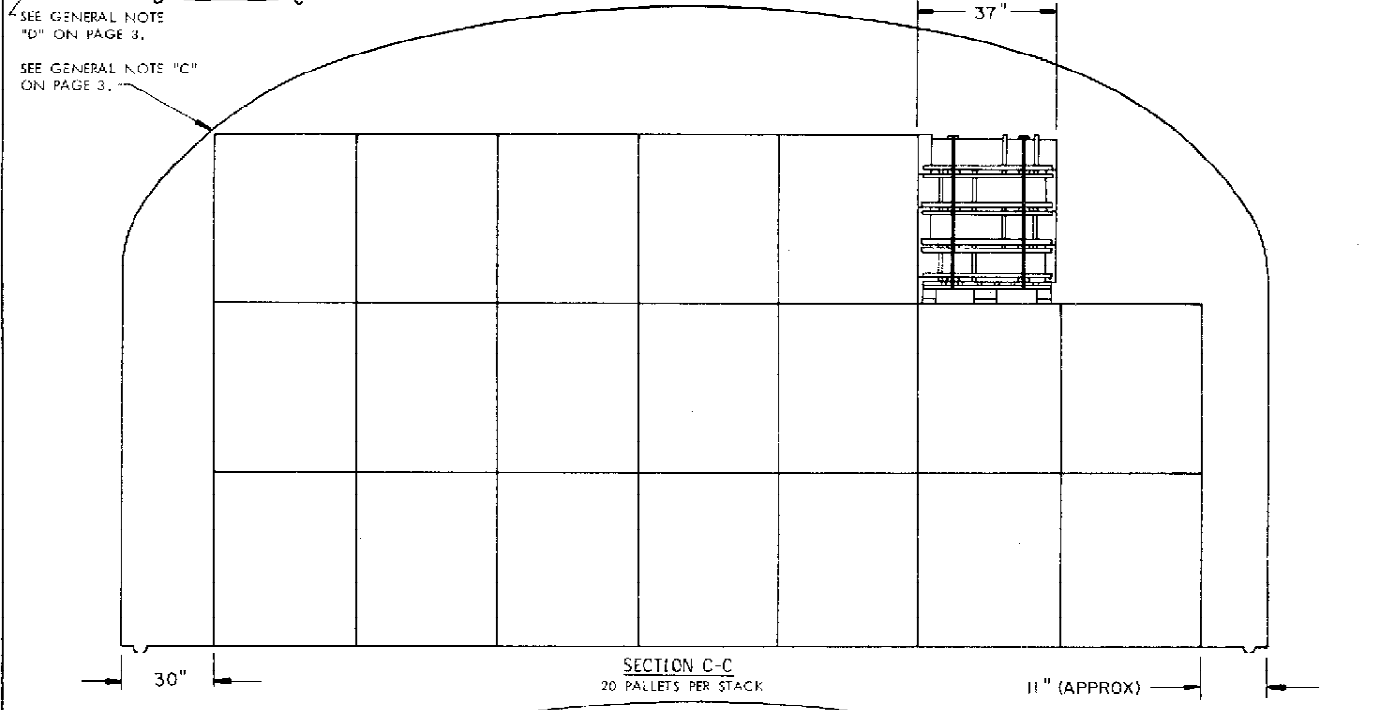
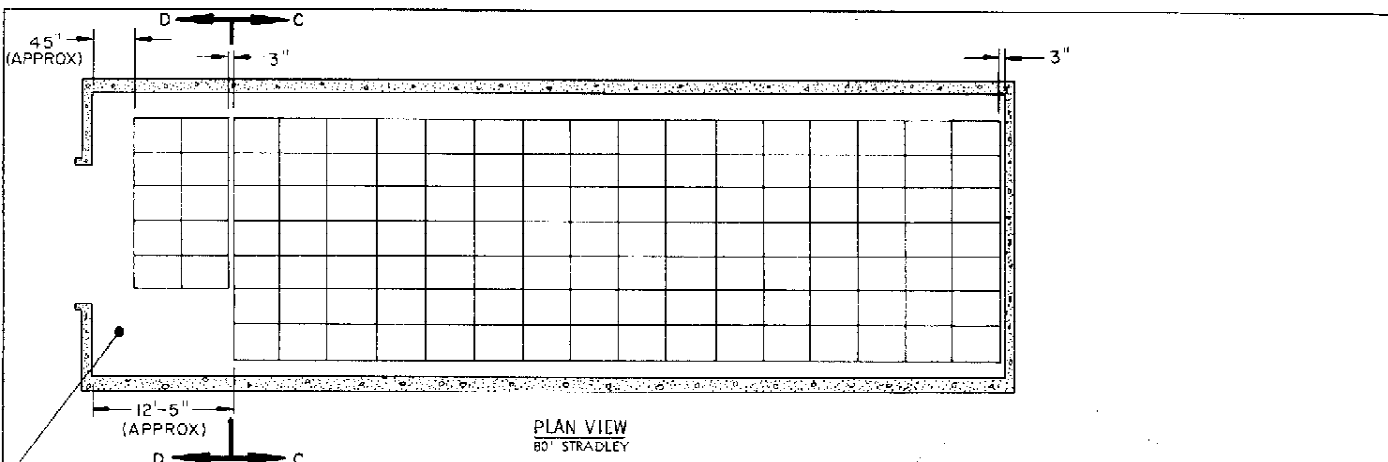
ITEM	QUANTITY
PALLET UNIT -----	216



ISOMETRIC VIEW
60' IGLOO

GENERAL NOTES

- A. THIS DOCUMENT HAS BEEN PREPARED AND ISSUED IN ACCORDANCE WITH AR 740-1, AND ALIGNMENTS TM 743-200-1 (CHAPTER 5).
- B. FOR DETAILS OF THE PALLETIZED UNIT, SEE PAGE 6.
 PALLET DIMENSIONS --- 37" LONG BY 50-1/2" WIDE BY 45-1/4" HIGH.
 GROSS WEIGHT ----- 1,900 POUNDS (APPROX).
- C. STORED PALLETIZED UNITS MUST NOT CONTACT THE WALLS OF THE MAGAZINE. TO PROVIDE FOR THIS MANDATORY CLEARANCE REQUIREMENT, THE SPACE AT THE SIDEWALLS OF THE MAGAZINE MAY BE ADJUSTED ACCORDINGLY, OR A PALLETIZED UNIT MAY BE OMITTED FROM A DEPICTED STACKING PATTERN AS NECESSARY.
- D. IF AVAILABLE MHE PERMITS, ADDITIONAL PALLETIZED UNITS MAY BE STORED IN THE FRONTAL AREA OF THE MAGAZINE.
- E. ITEM LOTS WILL NOT BE MIXED, BUT ONLY TO THE EXTENT THAT ITEMS OF ONE LOT WILL NOT BE STACKED ON TOP OF ITEMS FROM ANOTHER LOT. SEE THE "TYPICAL PLAN VIEWS" ON PAGE 6 WHICH DEPICT STORAGE OF MORE THAN ONE ITEM LOT PER MAGAZINE WHEN IT IS DESIRED OR REQUIRED TO HAVE ACCESS TO EACH LOT FOR REMOVAL. THE STORAGE PLANS ARE TYPICAL ONLY AND MAY BE ADJUSTED AS NECESSARY TO SUIT EXISTING REQUIREMENTS.
- F. THE ALLOWABLE "EXPLOSIVE LIMIT" ESTABLISHED FOR A MAGAZINE IS NOT TO BE EXCEEDED. THEREFORE, A QUANTITY REDUCTION OF THE NUMBER OF PALLET UNITS FROM THAT SHOWN IN THE STORAGE VIEWS MAY BE NECESSARY.
- G. THE STORAGE PROCEDURES DEPICTED HEREIN FOR SPECIFIC TYPES OF MAGAZINES MAY ALSO BE UTILIZED TO STORE THE ITEM IN OTHER TYPES OF APPROVED MAGAZINES. MINOR ADJUSTMENTS MAY BE MADE TO FACILITATE STORAGE IN OTHER TYPES OF MAGAZINES, HOWEVER, THE BASIC PRINCIPLES AS DEPICTED HEREIN WILL BE COMPLIED WITH.
- H. ANY "LIGHT" PALLET UNIT, A UNIT THAT DOES NOT CONTAIN 20 ROUNDS, WILL NOT BE BURIED IN STORAGE. IT MUST BE POSITIONED ADJACENT TO AN AISLE, PREFERABLY IN THE FRONTAL AREA OF A MAGAZINE.
- J. THE 152MM CARTRIDGE, M411A3, IS A QD CLASS 3 ITEM, AND IS IN COMPATIBILITY GROUP E. THE PROCEDURES DEPICTED HEREIN MAY ALSO BE USED WHEN STORING OTHER ITEMS, WHEN PACKED IN THE PA64 CONTAINER, WHICH MAY VARY IN NOMENCLATURE FROM THE ABOVE. THE EXPLOSIVE CLASSIFICATION OF OTHER ITEMS MAY BE DIFFERENT THAN THAT SHOWN.

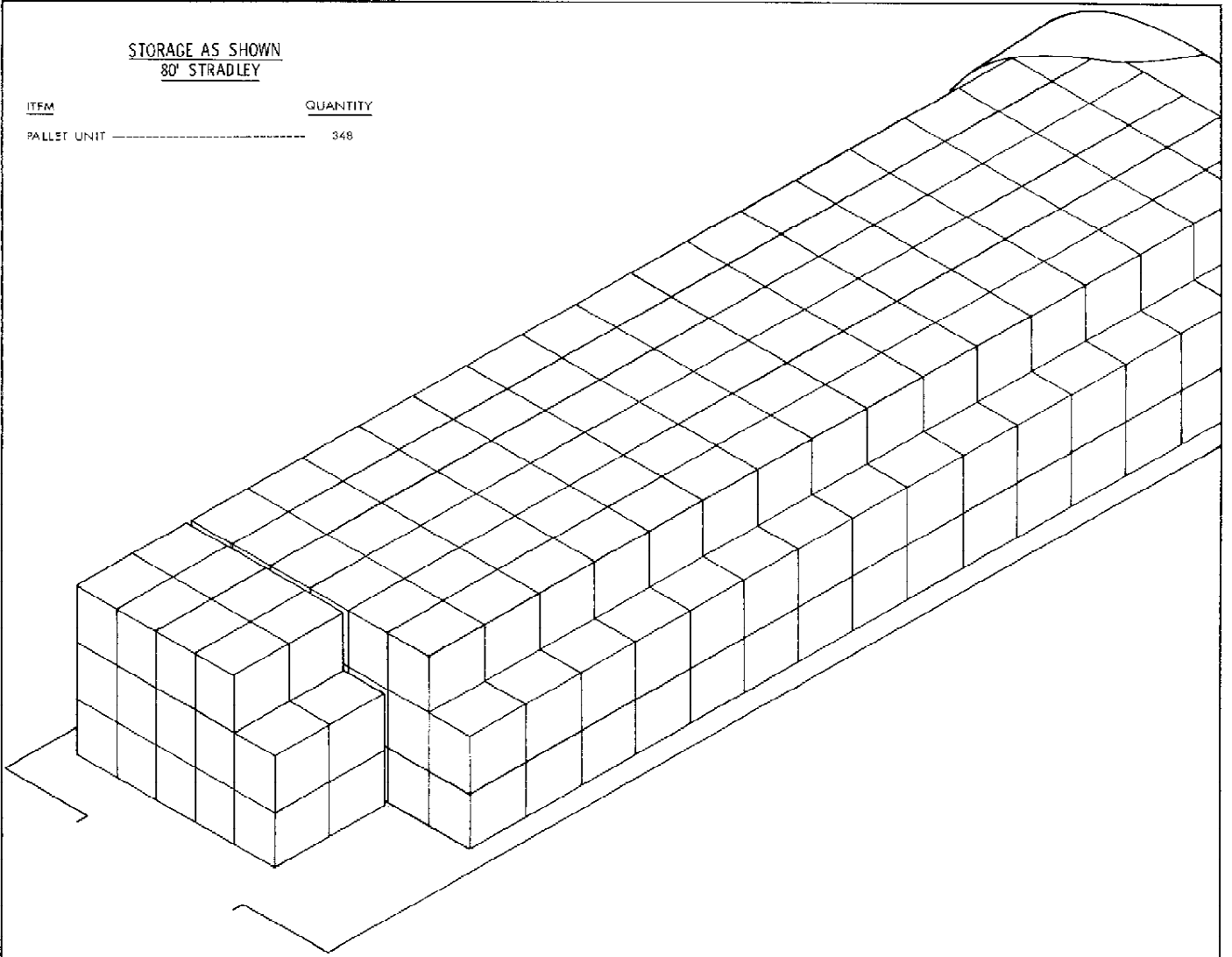


STORAGE AS SHOWN
80' STRADLEY

ITEM

QUANTITY

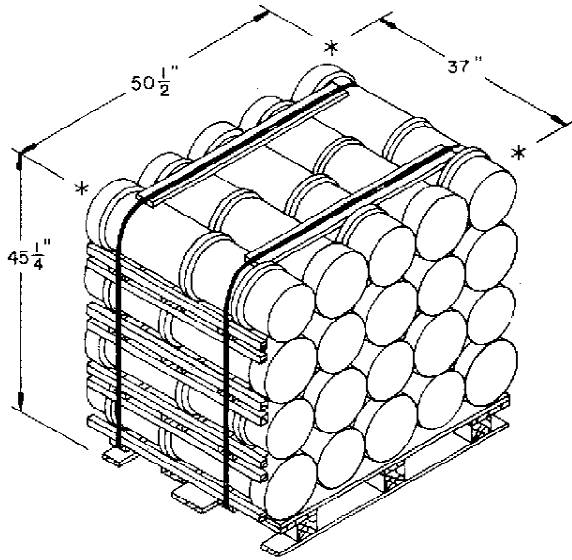
PALLET UNIT ----- 348



ISOMETRIC VIEW

80' STRADLEY

FOR "GENERAL NOTES" SEE PAGE 3.



PALLET UNIT

SPECIAL NOTES:

1. THE STORAGE PLANS SHOWN ON THIS PAGE ARE TYPICAL ONLY AND MAY BE ADJUSTED AS NECESSARY TO SUIT EXISTING REQUIREMENTS.
2. THE LARGEST LOT WILL BE STORED IN STACKS ACROSS THE REAR OF THE MAGAZINE (SEE "SECTION A-A" ON PAGE 2 AND "SECTION C-C" ON PAGE 4). IF THE LOT OCCUPIES LESS THAN ONE-FOURTH OF THE MAGAZINE, STORAGE IN THE REAR OF THE MAGAZINE OF MORE THAN ONE (1) LOT MAY BE ERRECTED IN ROWS SIMILAR TO THAT SHOWN IN THE FRONTAL AREA. DELETE THE CENTER AISLE REQUIREMENT AT THE REAR OF THE MAGAZINE.
3. STORAGE OF MULTIPLE LOTS IN THE FRONTAL AREA OF THE MAGAZINE WILL BE BASED UPON THE FOLLOWING:
 - A. DISTANCE FROM THE SIDE WALL WILL BE BASED ON OVERHEAD CLEARANCE REQUIRED FOR MHE.
 - B. EACH LOT MUST BE STORED A SUFFICIENT NUMBER OF UNITS WIDE TO ACCOMMODATE WIDTH OF MHE DURING OPERATIONS, EXCEPT FOR ROWS ADJACENT TO THE CENTER AISLE.
4. THE TYPICAL PROCEDURES DEPICTED BELOW FOR 80' IGLOO MAGAZINES MAY ALSO BE USED FOR 60' IGLOO MAGAZINES BY MAKING ADJUSTMENTS AS NECESSARY.

