


# STORAGE IN 60' & 80' IGLOO AND 80' STRADLEY MAGAZINES OF "TOTE BIN" CONTAINERS LOADED WITH BULK EXPLOSIVES

## INDEX

<u>ITEM</u>	<u>PAGE (S.)</u>
GENERAL NOTES, BILL OF MATERIAL, AND MATERIAL SPECIFICATIONS .....	3
IGLOO STORAGE PROCEDURES .....	2, 3
STRADLEY STORAGE PROCEDURES .....	4, 5

REVISIONS			DRAFTSMAN	PROJ. ENG.	DIV.	NEW
			DAP/AN	DHW/NEW	211	/
			CROSS	LIFE ENGINE OFFICE		
			RSH/GWP	K1	C. S. GALT	
			APPROVED			
			APPROVED BY ORDER OF COMMANDING GENERAL U. S. ARMY MATERIEL COMMAND  U. S. ARMY MATERIEL COMMAND U. S. ARMY MATERIEL CENTER			
U. S. ARMY MATERIEL COMMAND FEBRUARY 1974						
			CLASS	DIVISION	DRAWING	FILE
			19	48	4104	1-14M 1001

**DO NOT SCALE**

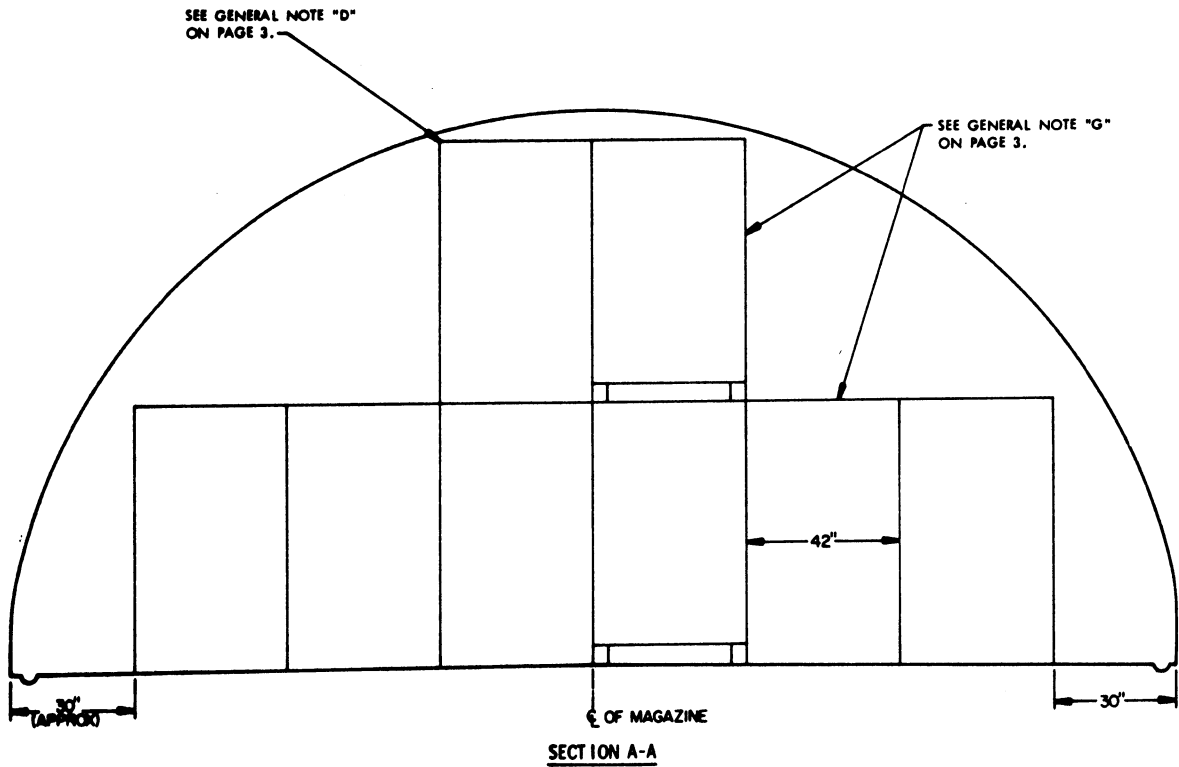
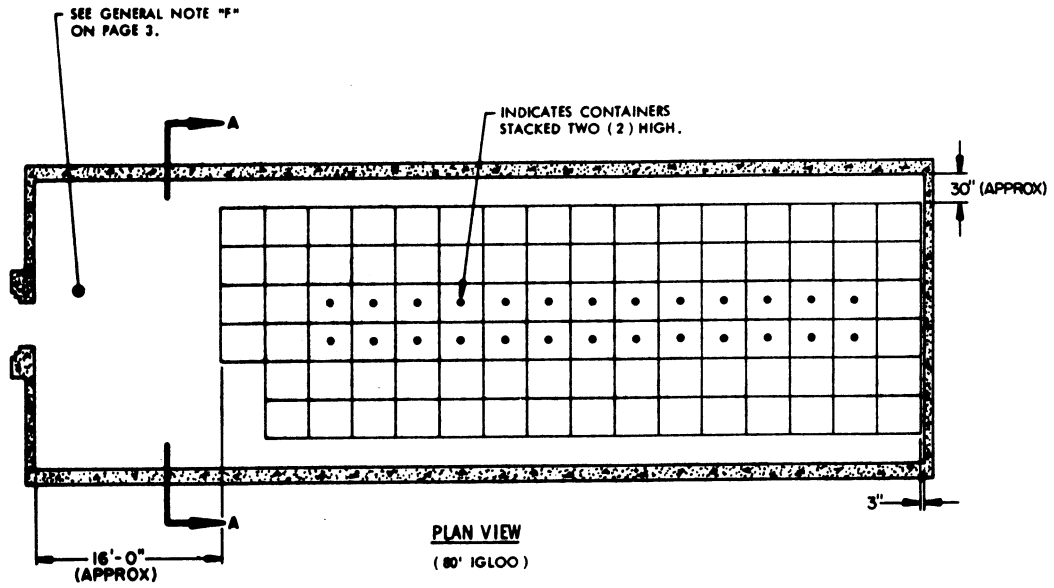
STORAGE AS SHOWN

80' IGLOO

ITEM

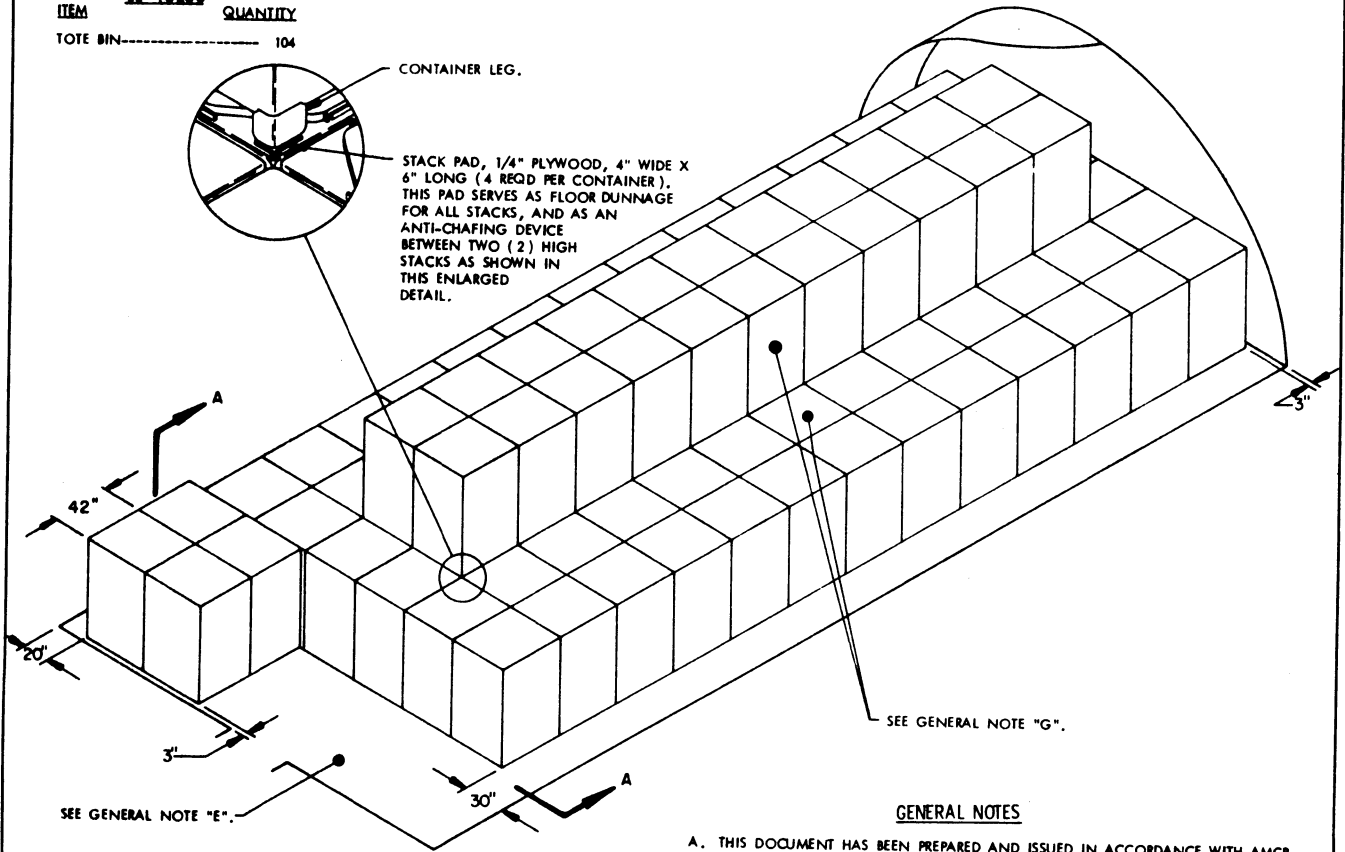
QUANTITY

TOTE BIN----- 120



**STORAGE AS SHOWN**

ITEM	60' IGLOO	QUANTITY
TOTE BIN-----		104



**ISOMETRIC VIEW**

(60' IGLOO)

(GENERAL NOTES CONTINUED)

- J. LOTS WILL NOT BE MIXED, BUT ONLY TO THE EXTENT THAT ITEMS OF ONE LOT WILL NOT BE STACKED ON TOP OF ITEMS FROM ANOTHER LOT. WHEN MORE THAN ONE LOT IS STORED IN A MAGAZINE, STORAGE IS TO BE ARRANGED SO AS TO PROVIDE FOR ACCESS TO EACH LOT WITH MHE.

BILL OF MATERIAL		
LUMBER	SIZE	NO. REQD
PLYWOOD, 1/4"	4" X 6"	4 PER CONTAINER

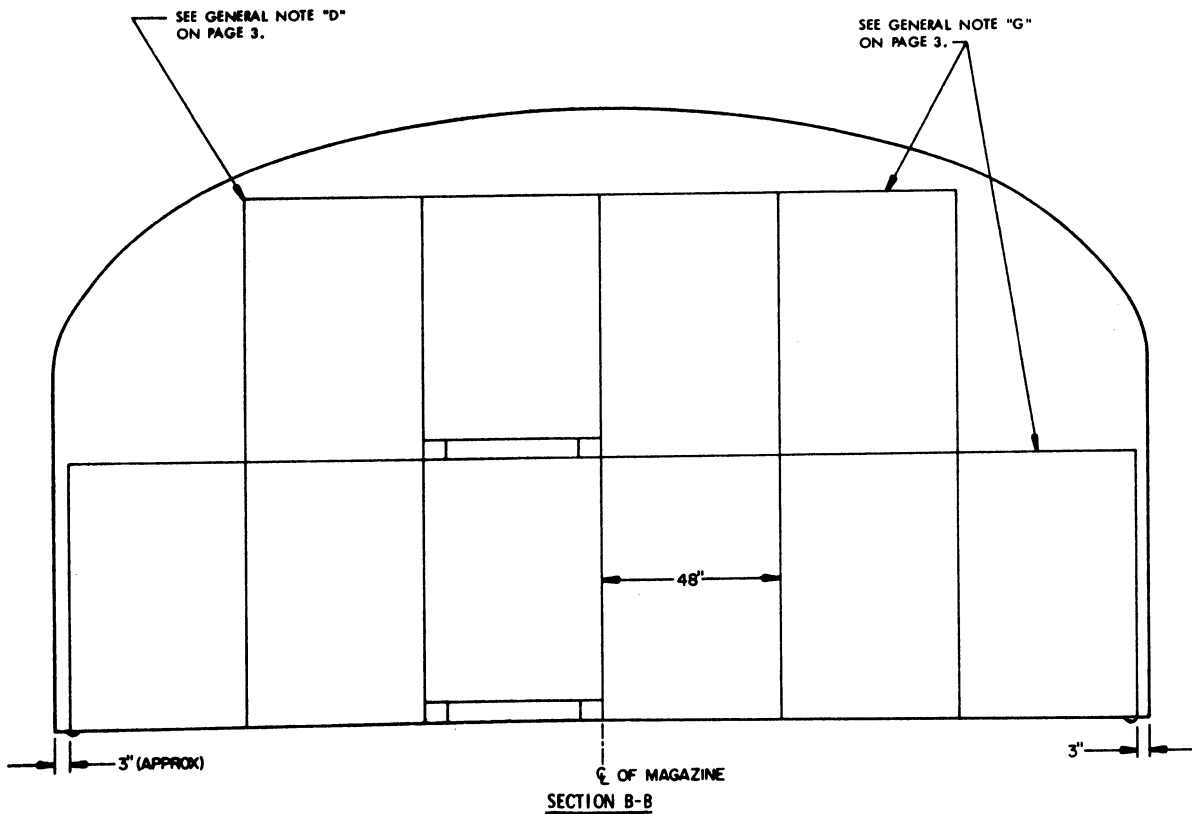
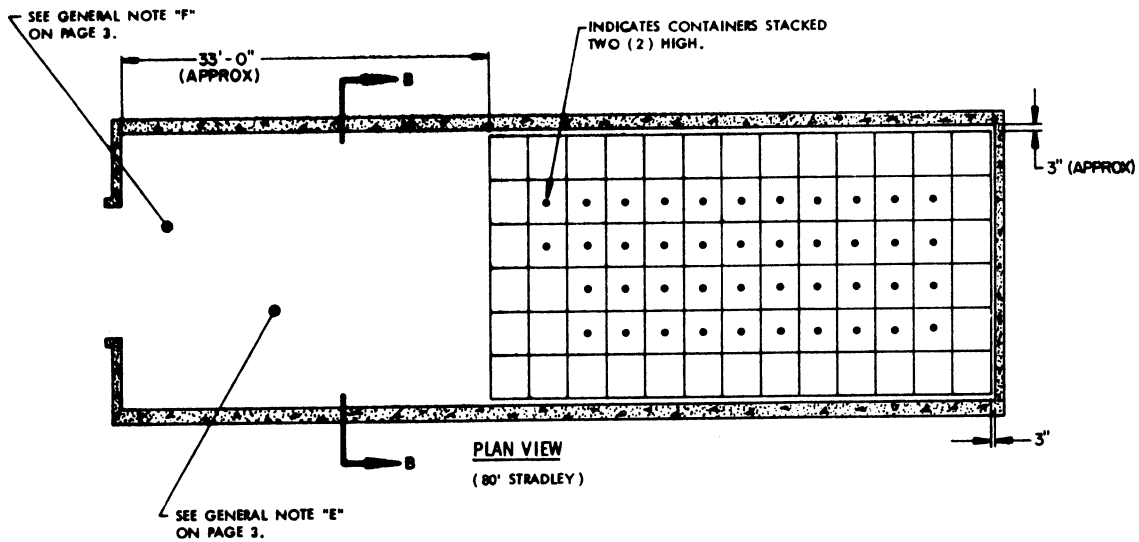
**MATERIAL SPECIFICATIONS**

**PLYWOOD** : GROUP B OR C, GRADE C-D (EXTERIOR); FED SPEC NN-P-530. IF SPECIFIED GRADE IS NOT AVAILABLE, A BETTER EXTERIOR GRADE MAY BE SUBSTITUTED.

**GENERAL NOTES**

- A. THIS DOCUMENT HAS BEEN PREPARED AND ISSUED IN ACCORDANCE WITH AMCR 740-13, AND AUGMENTS TM 743-200-1 (CHAPTER 5).
- B. FOR DETAILS OF THE CONTAINER FOR THE TOTE BIN SEE "TOTE SYSTEMS DIVISION" DRAWING NO. D-311062 REVISION D.  
CONTAINER DIMENSIONS-----48" LONG X 42" WIDE X 70-1/2" HIGH.  
GROSS WEIGHT-----5,255 POUNDS (MAXIMUM).  
NET EXPLOSIVE WEIGHT-----5,000 POUNDS (MAXIMUM).
- C. SIDE, AISLE DIMENSIONS FOR THE THREE MAGAZINES SHOWN HEREIN AND THE SIZE OF THE FRONTAL AREA IN THE 60-FOOT IGLOO MAY BE ADJUSTED TO SUIT LOCAL CONDITIONS AND/OR AVAILABLE MATERIALS HANDLING EQUIPMENT (MHE).
- D. STORED CONTAINERS MUST NOT CONTACT THE WALL OF A MAGAZINE. TO PROVIDE FOR THIS MANDATORY CLEARANCE REQUIREMENT, THE SPACES AT THE SIDE WALLS OF A MAGAZINE MAY BE ADJUSTED ACCORDINGLY.
- E. IF THE AVAILABLE MHE PERMITS AND THE CRITERIA OF GENERAL NOTE "H" IS NOT VIOLATED, ADDITIONAL TOTE BIN CONTAINERS MAY BE STORED WITHIN THE FRONTAL AREA OF A 60-FOOT MAGAZINE.
- F. DEPICTED STORAGE ARRANGEMENTS PROVIDE FOR MAXIMUM STORAGE DENSITY, THEREBY LEAVING SPACE IN 80-FOOT MAGAZINES FOR THE STORAGE OF OTHER COMPATIBLE ITEMS. HOWEVER, REFERRING TO THE STORAGE PROCEDURES FOR THE 80-FOOT IGLOO AND STRADLEY MAGAZINES, THE 2-HIGH STACKING MAY BE OMITTED FROM THE STORAGE ARRANGEMENTS AS SPECIFIED AND THE CONTAINERS FROM A SECOND LAYER PLACED INTO THE FIRST LAYER IN THE FRONTAL AREA OF THE MAGAZINE, IF DESIRED AND THE FRONTAL AREA SPACE IS NOT REQUIRED FOR OTHER PURPOSES.
- G. PRIOR TO PLACING A SECOND-LAYER CONTAINER ON TOP OF A FIRST-LAYER CONTAINER, ONE OR MORE CONTAINERS MUST BE POSITIONED INTO STORAGE ON THREE SIDES OF THE FIRST-LAYER CONTAINER. SIMILARLY, AFTER A 2-HIGH STORAGE SECTION IS COMPLETED IT MUST BE FACED OFF WITH AT LEAST ONE ONE-HIGH STACK. ATTENTION IS DIRECTED TO THE STORAGE ARRANGEMENT SHOWN ABOVE FOR A 60-FOOT IGLOO MAGAZINE, FOR A PICTORIAL VIEW OF THESE REQUIREMENTS.
- H. **CAUTION:** THE ALLOWABLE "EXPLOSIVE LIMIT" ESTABLISHED FOR A MAGAZINE IS NOT TO BE EXCEEDED. DEPENDING ON THE ITEM BEING STORED, THIS LIMITATION MAY REQUIRE A QUANTITY REDUCTION FROM THE STORAGE AS SHOWN. THE NET EXPLOSIVE WEIGHT PER CONTAINER CAN VARY DOWNWARD FROM 5,000 POUNDS, 1,000 POUNDS OR MORE, AND THE "EXPLOSIVE LIMIT" VARIES BETWEEN MAGAZINE SITES. THEREFORE, ADJUSTMENTS TO THE DEPICTED STORAGE ARRANGEMENTS ARE PROBABLE, DEPENDING ON THE EXPLOSIVE BEING STORED. IF ADJUSTMENTS ARE MADE, THE SPECIFIED STORAGE PROCEDURES ARE TO BE FOLLOWED AS CLOSELY AS POSSIBLE.

(CONTINUED AT LEFT)



**STORAGE AS SHOWN**

**80' STRADLEY**

<u>ITEM</u>	<u>QUANTITY</u>
TOTE BIN-----	120

SEE THE  
"STACK PAD"  
DETAIL ON  
PAGE 3.

SEE GENERAL NOTE "F"  
ON PAGE 3.

SEE GENERAL NOTE "G"  
ON PAGE 3.

SEE GENERAL NOTE "E"  
ON PAGE 3.

**NOTE:** FOR "GENERAL NOTES", "BILL OF MATERIAL", AND  
"MATERIAL SPECIFICATIONS", SEE PAGE 3.

**ISOMETRIC VIEW**  
(80' STRADLEY)

