

STORAGE IN APPROVED MAGAZINES OF 8" SEPARATE LOADING PROJECTILES, UNITIZED 6 ROUNDS PER 22-5/8" L X 31-3/4" W X 48-1/8" H PALLET UNIT[⊕]

INDEX

<u>ITEM</u>	<u>PAGE (S)</u>
GENERAL NOTES, AND MATERIAL SPECIFICATIONS -----	2
DETAILS -----	3
STORAGE PROCEDURES (EARTH-COVERED MAGAZINES):	
80', 60' AND 40' L X 26'-6" W X 12'-3" H IGLOO MAGAZINES -----	4,5
80' AND 40' L X 25' W X 10' H ARCH TYPE MAGAZINES (IGLOO) -----	6,7
80' AND 40' L X 25' W X 11' H ARCH TYPE MAGAZINES (IGLOO) -----	8,9
80' AND 40' L X 25' W X 12'-1-3/4" H ARCH TYPE MAGAZINES (IGLOO) -----	10,11
81'-2" L X 26'-6" W X 12'-1-3/4" H ARCH TYPE MAGAZINE (IGLOO) -----	12,13
80' L X 25' W X 14'-4" H STRADLEY AND 89' L X 24'-10" W X 14'-4" H OVAL ARCH MAGAZINES -----	14,15
52' DIA CORBETTA MAGAZINE -----	16,17
100' L X 50' W RECTANGULAR MAGAZINE -----	18,19
TYPICAL MULTIPLE-LOT STORAGE PROCEDURES:	
IGLOO AND ARCH TYPE MAGAZINES -----	20,21
STRADLEY AND OVAL ARCH TYPE MAGAZINES -----	22,23
CORBETTA MAGAZINE -----	24,25
RECTANGULAR MAGAZINE -----	26
STORAGE PROCEDURES (STANDARD ABOVE-GROUND MAGAZINES):	
METHOD OF MEASURING STACK SPACING -----	27
217' L X 50' W STANDARD MAGAZINE -----	28,29

● THE PROCEDURES HEREIN APPLY TO STANDARD 45-5/8" H THRU 48-1/8" H PALLET UNITS. SIZE OF UNIT MAY VARY SLIGHTLY, HOWEVER, PROCEDURES SPECIFIED HEREIN WILL APPLY.

⊕ THE PROCEDURES WITHIN THIS DRAWING ARE ALSO APPLICABLE TO STORAGE OF 8" SEPARATE LOADING PROJECTILE WARHEAD SECTION PALLET UNITS.

DO NOT SCALE

REVISIONS				DRAFTSMAN	TYPIST	CHECKER	TECHNICIAN	ENGINEER
				LJ	JAG			MWD
				SMCAC		SMCAC-SEA	SMCAC-DE	
1	NOV 91		David A. Ashford	DA		WJ	WJ Ernst	
		DES	William F. Ernst	DA		DA	DA	
		DEV						
		DEO						
		DE						
		DEV						
		DEO						
		DE						
		DEV						
		DEO						
		DE						
				APPROVED BY ORDER OF COMMANDING GENERAL, U.S. ARMY MATERIEL COMMAND (AMC)				
				U.S. ARMY DEFENSE AMMUNITION CENTER AND SCHOOL				
				U.S. ARMY MATERIEL COMMAND				
				NOVEMBER 1991				
				CLASS	DIVISION	DRAWING	FILE	
				19	48	4102/8	1-2-3-4-14 22PE1001	

GENERAL NOTES

- A. THIS DOCUMENT HAS BEEN PREPARED AND ISSUED IN ACCORDANCE WITH AR 740-1, AND AUGMENTS TM 743-200-1 (CHAPTER 5).
- B. THE STORAGE PROCEDURES DEPICTED WITHIN THIS DOCUMENT ARE APPLICABLE FOR STORAGE IN VARIOUS TYPES AND SIZES OF MAGAZINES. THE STORAGE PROCEDURES DEPICTED FOR THE SPECIFIC TYPES OF MAGAZINES MAY ALSO BE UTILIZED TO STORE PROJECTILE PALLET UNITS IN OTHER TYPES OF APPROVED MAGAZINES. MINOR ADJUSTMENTS MAY BE MADE TO FACILITATE STORAGE IN OTHER TYPES OF MAGAZINES, HOWEVER, THE BASIC PRINCIPLES AS DEPICTED HEREIN WILL BE FOLLOWED.
- C. CAUTION: THE ALLOWABLE "EXPLOSIVE LIMIT" ESTABLISHED FOR A MAGAZINE IS NOT TO BE EXCEEDED. STORAGE OF SOME SPECIFIC TYPES OF SEPARATE LOADING PROJECTILES MUST ALSO COMPLY WITH CURRENT DIRECTIVES AND OTHER REGULATORY REQUIREMENTS, IN ADDITION TO THOSE SPECIFIED IN THIS DRAWING.
- D. TWO (2) PALLET UNITS CAN BE HANDLED BY A FORKLIFT TRUCK AS ONE LOAD, IF THE LENGTH OF THE FORK TINES IS ADEQUATE TO PROVIDE FULL-LENGTH OR NEARLY FULL-LENGTH BEARING UNDER THE LOAD BEING HANDLED. OTHER APPLICABLE SAFETY CONTROLS (DIRECTIVES, REGULATIONS, ETC.) MUST BE OBSERVED. SEE NOTE "G" BELOW FOR ADDITIONAL REQUIREMENTS.
- E. STACK STABILIZING DUNNAGE PIECES CONSISTING OF 2" X 4" MATERIAL WILL BE USED BETWEEN LAYERS OF PALLET UNITS TO PROVIDE CLEARANCE FOR THE FORK TINES OF THE FORKLIFT TRUCK FOR SAFE PLACEMENT OR REMOVAL OF UPPER LAYER PALLET UNITS. USUALLY, MOST 2" X 4" DUNNAGE PIECES WILL BE 42" LONG. HOWEVER, SOME 21" LONG PIECES WILL BE REQUIRED TO ACHIEVE THE STORAGE ARRANGEMENTS DEPICTED IN THIS DRAWING.
- F. IN CONJUNCTION WITH THE SPECIFIED STACK-LEVELING WEDGES AND/OR STACK-STABILIZING DUNNAGE, ADDITIONAL STACK-STABILIZING DUNNAGE IN THE FORM OF "SHIMS" PROBABLY WILL BE REQUIRED TO ACHIEVE SOUND AND ACCEPTABLE STABLE STACKS. SHIM MATERIAL OF VARYING THICKNESSES WILL BE USED BETWEEN STACKED UNITS AS REQUIRED TO GAIN LEVEL OR NEARLY LEVEL STACKS AND LID BEARING WITHIN A STACK FROM THE FLOOR OF A MAGAZINE TO THE TOP OF THE STACK. ALSO, "SHIMS" WILL BE USED IN LIEU OF SPECIFIED WEDGES IN OVAL ARCH TYPE MAGAZINES BECAUSE THE FLOOR SLOPES FROM THE REAR WALL TOWARD THE FRONT WALL. ADDITIONALLY, "SHIMS" CAN BE USED WITHIN AN IGLOO TYPE MAGAZINE INSTEAD OF THE SPECIFIED WEDGES, PROVIDING THE MAGAZINE FLOOR DOES NOT SLOPE MORE THAN 1-1/4" FROM THE CENTER TO A SIDEWALL.
- G. TO FACILITATE STABLE AND SAFE HANDLING, BY A FORKLIFT TRUCK, IN STACKING THESE PALLET UNITS, TWO (2) PALLET UNITS WILL BE BUNDLED TOGETHER WITH TWO (2) STRAPS AS SHOWN IN THE "BUNDLING DETAIL" ON PAGE 3. BUNDLING STRAPS ARE NOT REQUIRED FOR PALLET UNITS STORED ONE-LAYER HIGH.
- H. STORED PALLET UNITS MUST NOT CONTACT THE WALLS OF A MAGAZINE. TO PROVIDE FOR THIS MANDATORY CLEARANCE REQUIREMENT, UNITS MAY BE ELIMINATED FROM THE DEPICTED STORAGE PATTERN AS NECESSARY.
- J. AISLE DIMENSIONS SHOWN FOR STORAGE PROCEDURES IN MAGAZINES MAY BE ADJUSTED TO SUIT LOCAL CONDITIONS, VARIATIONS IN PALLET UNIT DIMENSIONS, AND/OR AVAILABLE MATERIALS HANDLING EQUIPMENT. AISLE SPACING FOR PROJECTILE STORAGE IN STANDARD ABOVE-GROUND MAGAZINES MUST COMPLY WITH NOSE TO NOSE AND BASE TO BASE DISTANCE REQUIREMENTS SPECIFIED ON PAGE 27.
- K. STORAGE PROCEDURES FOR PROJECTILE PALLET UNITS IN STANDARD ABOVE-GROUND MAGAZINES, AS DEPICTED ON PAGES 27 THRU 29, REQUIRE THE USE OF A SPECIAL "TURNING ATTACHMENT" ON THE FORKLIFT TRUCK FOR HANDLING AND STACKING THE UNITS. FOR DETAILS OF THE "TURNING ATTACHMENT", AUXILIARY PARTS, AND PROCEDURES FOR ITS OPERATION AND USE, SEE DRAWINGS NO. D-ORDJU-1361 AND 1362, C-ORDJU-1069, AND 19-48-1221-599.
- L. THE MAXIMUM FLOOR LOAD FOR A MAGAZINE AS PRESCRIBED BY LOCAL STANDARDS WILL NOT BE EXCEEDED.
- M. IF THE AVAILABLE MHE PERMITS, ADDITIONAL PALLETIZED UNITS MAY BE STORED WITHIN THE FRONTAL AREA AND/OR OTHER AVAILABLE AREA OF THE MAGAZINE.
- N. PORTIONS OF THE MAGAZINES, SUCH AS SIDEWALLS, END WALLS AND ROOFS, HAVE NOT BEEN SHOWN IN THE STORAGE VIEWS FOR CLARITY PURPOSES.
- P. DUNNAGE LUMBER SPECIFIED THROUGHOUT THIS PROCEDURAL DRAWING IS OF NOMINAL SIZE. FOR EXAMPLE, 2" X 4" MATERIAL IS ACTUALLY 1-1/2" THICK BY 3-1/2" WIDE.

(CONTINUED AT RIGHT)

MATERIAL SPECIFICATIONS

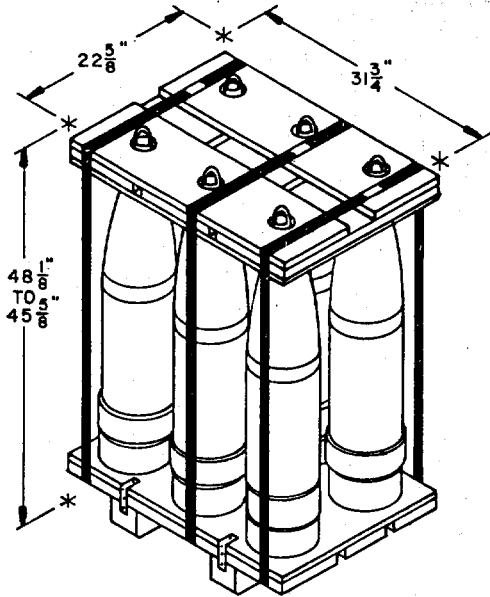
- LUMBER ----- : SEE TM 743-200-1, DUNNAGE LUMBER, FED SPEC MM-L-751.
- STRAPPING, STEEL --- : ASTM D 3953; FLAT STRAPPING, TYPE 1 OR 2, HEAVY DUTY, ZINC-COATED (GRADE 2).
- SEAL, STRAP ----- : ASTM D 3953; CLASS H, FINISH B (GRADE 2), TYPE D, STYLE I, II, OR IV.

(GENERAL NOTES CONTINUED)

- Q. STORAGE OF MULTIPLE LOTS IN A MAGAZINE WILL REQUIRE CAREFUL PRE-PLANNING SO AS TO INSURE MHE ACCESSIBILITY TO ANY LOT IN ACCORDANCE WITH REQUIREMENTS SET FORTH IN THE APPLICABLE "SPECIAL NOTES" SECTIONS OF THE MULTIPLE-LOT STORAGE PROCEDURES TYPICALLY SHOWN ON PAGES 20 THRU 26. FOR MULTIPLE LOT STORAGE IN STANDARD ABOVE-GROUND MAGAZINES, SEE SPECIAL NOTE 7 ON PAGE 27.
- R. ANY "LIGHT" PALLETIZED UNIT THAT DOES NOT CONTAIN A FULL QUANTITY OF SEPARATE LOADING PROJECTILES WILL NOT BE BURIED IN STORAGE. IT MUST BE POSITIONED ADJACENT TO AN AISLE, PREFERABLY IN FRONT OF THE LOT.
- S. SEPARATE LOADING PROJECTILES PRESENTLY STORED IN ACCORDANCE WITH A PRIOR APPROVED 19-48 SERIES DRAWING NEED NOT BE RE-STORED SOLELY TO CONFORM TO THE PROCEDURES SPECIFIED IN THIS DOCUMENT.
- T. ALTHOUGH THE PROCEDURES SHOWN IN THIS DRAWING PERTAIN TO THE STORAGE OF 8" SEPARATE LOADING PROJECTILE PALLET UNITS, THEY ARE ALSO APPLICABLE TO STORAGE OF 8" SEPARATE LOADING PROJECTILE WARHEAD SECTION PALLET UNITS IN ALL MAGAZINES SHOWN, EXCEPT THE STANDARD ABOVE-GROUND MAGAZINE. DUE TO THE IDENTICAL LENGTH AND WIDTH DIMENSIONS OF THE PROJECTILE AND WARHEAD SECTION PALLET UNITS, ALL APPLICABLE MAGAZINE PLAN VIEWS SHOWING LOCATIONS OF PROJECTILE PALLET UNITS WILL APPLY TO WARHEAD SECTION PALLET UNITS ALSO. THE DIFFERENCE IN HEIGHT BETWEEN THE TWO PALLET UNITS WILL ALLOW MORE WARHEAD SECTION PALLET UNITS TO BE STORED THAN THE NUMBER OF PROJECTILE PALLET UNITS SHOWN. PHANTOM LINES IN THE APPLICABLE MAGAZINE SECTION VIEWS INDICATE LOCATIONS WHERE THE HEIGHT DIFFERENCE ALLOWS WARHEAD SECTION PALLET UNITS TO BE STACKED HIGHER THAN THE PROJECTILE PALLET UNITS SHOWN. THE "STORAGE QUANTITY" DATA FOR EACH MAGAZINE, EXCEPT THE STANDARD ABOVE-GROUND MAGAZINE, INCLUDES THE QUANTITIES OF PROJECTILE PALLET UNITS AND PROJECTILES AND THE QUANTITIES OF WARHEAD SECTION PALLET UNITS AND WARHEAD SECTIONS. THE "STORAGE QUANTITY" DATA SECTION FOR THE STANDARD ABOVE-GROUND MAGAZINE INCLUDES QUANTITIES OF PROJECTILE PALLET UNITS AND PROJECTILES ONLY. THE BILL OF MATERIAL SECTION FOR EACH MAGAZINE APPLIES ONLY TO THE STORAGE OF PROJECTILE PALLET UNITS, HOWEVER, THE WEDGE REQUIREMENTS WILL BE IDENTICAL, AND THE 2" X 4" DUNNAGE LUMBER QUANTITIES WILL BE GREATER, FOR THE WARHEAD SECTION PALLET UNITS. BUNDLING REQUIREMENTS FOR WARHEAD SECTION PALLET UNITS WILL BE THE SAME AS THOSE SPECIFIED FOR PROJECTILE PALLET UNITS, AS SHOWN BY THE "BUNDLING DETAIL" ON PAGE 3.

REVISIONS

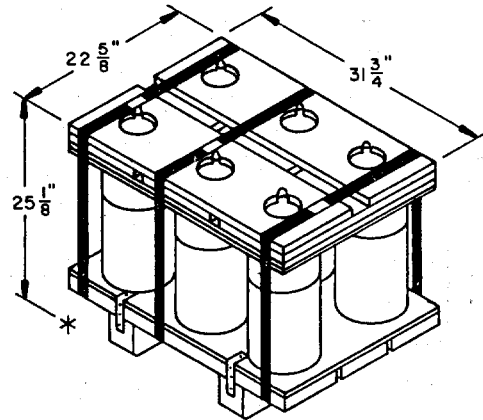
- REVISION NO. 1, DATED NOVEMBER 1991, CONSISTS OF :
1. REVISING GENERAL NOTES "D", "E", AND "G"
 2. ADDING MANDATORY REQUIREMENTS FOR BUNDLING UNITS WITH TWO (2) STRAPS.
 3. CHANGING STACK-STABILIZING DUNNAGE BETWEEN LAYERS FROM 1" X 4" MATERIAL TO 2" X 4" MATERIAL.
 4. UPDATING MATERIAL SPECIFICATIONS FOR STEEL STRAPPING AND SEALS.
 5. UPDATING DRAWING FORMAT.



8', 6' PALLET

NOTE: HEIGHT OF UNIT MAY VARY..

UNIT WEIGHT ----- 1,253 LBS (APPROX).



6' PALLET

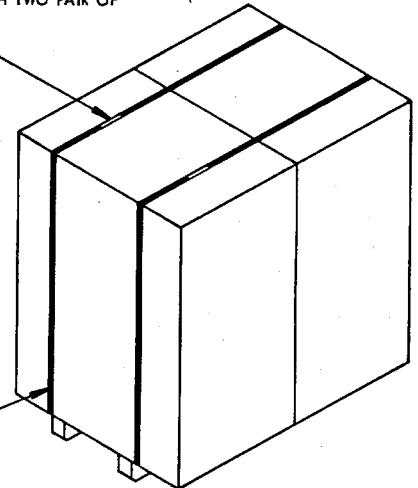
NOTE: SIZE OF UNIT MAY VARY SLIGHTLY.

UNIT WEIGHT ----- 653 LBS (APPROX).

SPECIAL NOTES:

- ALTHOUGH NOT TO BE APPLIED AS A STANDARD PRACTICE (BECAUSE OF HIGH COST), AVAILABLE 1-1/4" STRAPPING CAN BE USED IN LIEU OF SPECIFIED 3/4" BUNDLING STRAP IF THE 3/4" STRAP IS NOT READILY AVAILABLE.
- BECAUSE OF OPERATIONAL NECESSITY AND SAFETY IN STACKING, TWO STRAPS WILL BE USED TO UNITIZE EACH BUNDLED UNIT.
- OCCASIONALLY, PALLET UNITS WILL ALREADY BE BUNDLED WHEN THEY ARRIVE AT THE STORAGE LOCATION. THIS WILL NEGATE THE REQUIREMENT FOR BUNDLING UNITS AS SHOWN IN THE "BUNDLING DETAIL" PROVIDING THE UNITS ARE BUNDLED INTO TWO-PALLET BUNDLES WITH TWO (2) STRAPS AND ARE "ZINC COATED" STRAPS. LOOSE STRAPS SHOULD BE REPLACED.

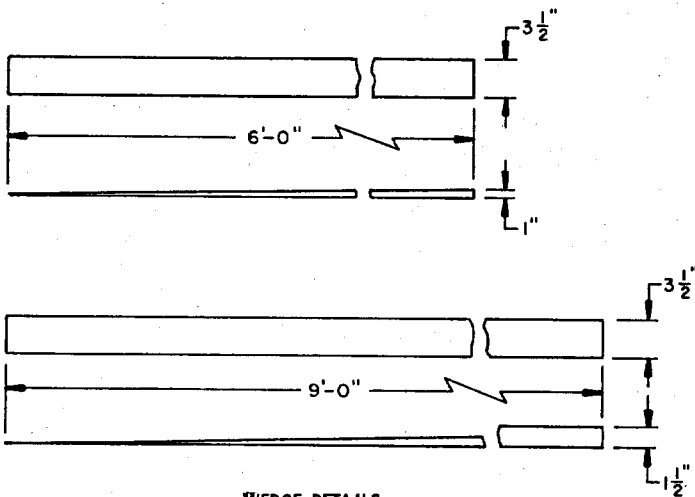
SEAL FOR 3/4" STRAPPING (1 REQD PER STRAP)
CRIMP EACH SEAL WITH TWO PAIR OF NOTCHES.



BUNDLING STRAP, 3/4" X .031" OR .035" STEEL STRAPPING BY A LENGTH REQUIRED TO ENCIRCLE TWO (2) PALLET UNITS (2 REQD). SEE GENERAL NOTE "G" ON PAGE 2.

BUNDLING DETAIL

SEE SPECIAL NOTES AT LEFT.



WEDGE DETAILS
2" X 4" MATERIAL.

INDICATES PALLET UNITS

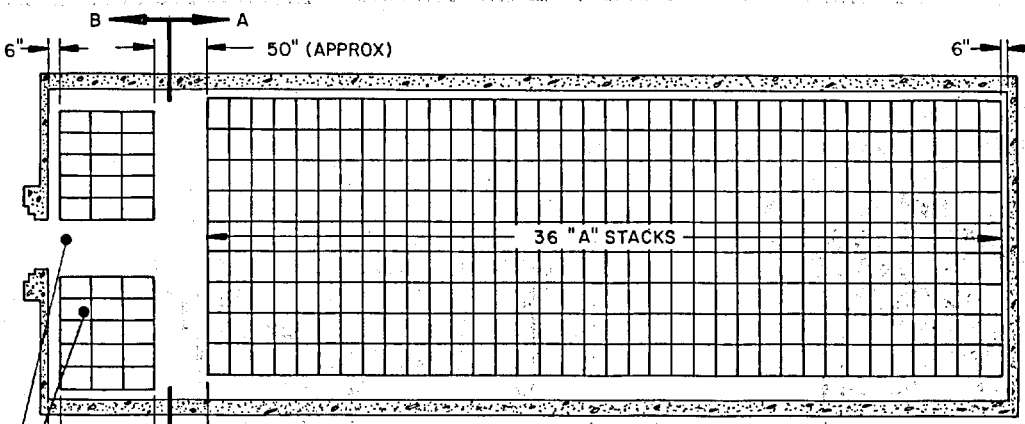
BUNDLING STRAP

WEDGE.

INDICATES MAGAZINE FLOOR.

WEDGE LOCATION DETAIL

ISOMETRIC VIEWS WITHIN THIS DRAWING DO NOT DEPICT ALL WEDGES THAT ARE REQUIRED. WEDGES ARE SHOWN AT SOME LOCATIONS TO PROVIDE POSITIONING GUIDANCE.



STORAGE IN 80' IGLOO

ITEM	QUANTITY
PROJECTILE PALLET UNITS	693
PROJECTILES	4,158
WARHEAD SECTION PALLET UNITS	1,389
WARHEAD SECTIONS	8,334

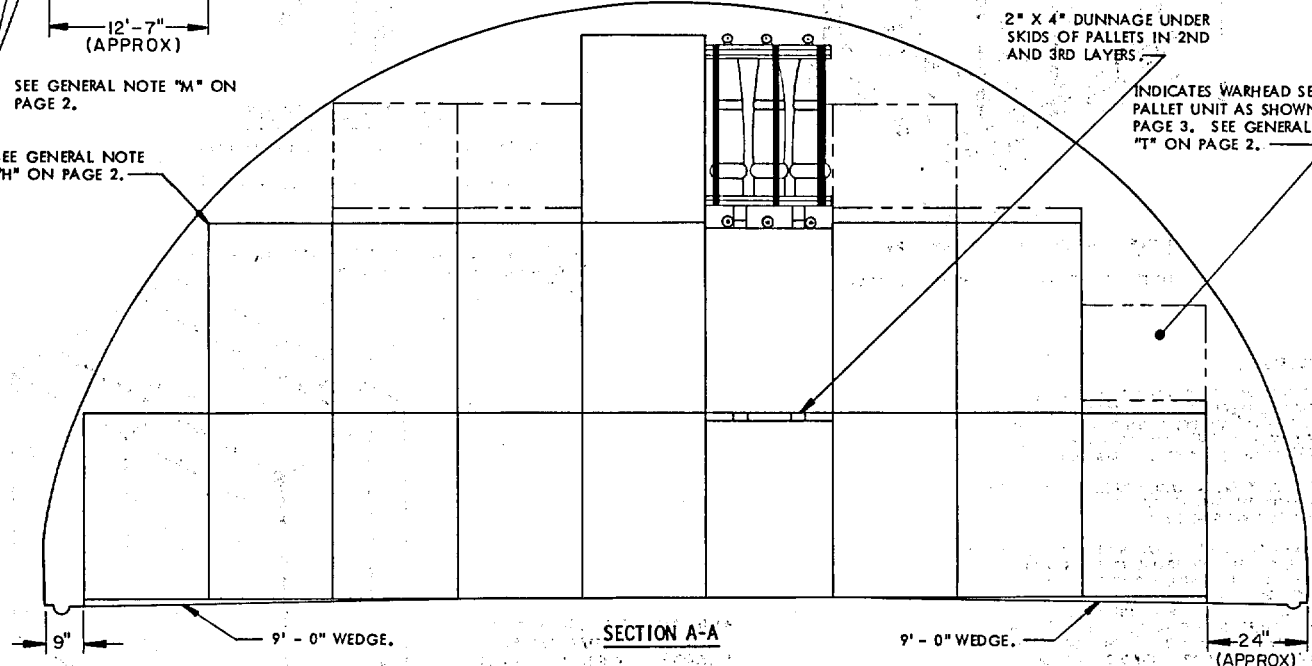
PLAN VIEW
(80' IGLOO)

SEE GENERAL NOTE "M" ON PAGE 2.

SEE GENERAL NOTE "H" ON PAGE 2.

2" X 4" DUNNAGE UNDER SKIDS OF PALLETS IN 2ND AND 3RD LAYERS

INDICATES WARHEAD SECTION PALLET UNIT AS SHOWN ON PAGE 3. SEE GENERAL NOTE "T" ON PAGE 2.



SECTION A-A

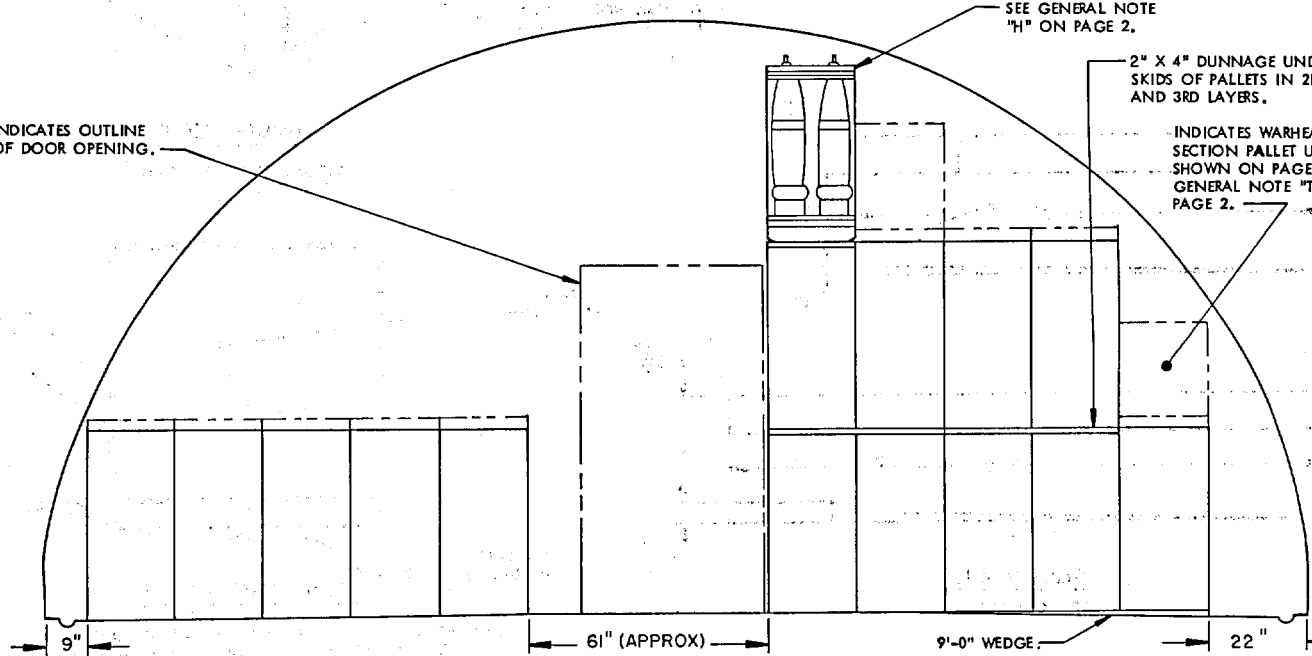
("A" STACK, 18 PROJECTILE PALLET UNITS)

SEE GENERAL NOTE "H" ON PAGE 2.

INDICATES OUTLINE OF DOOR OPENING.

2" X 4" DUNNAGE UNDER SKIDS OF PALLETS IN 2ND AND 3RD LAYERS.

INDICATES WARHEAD SECTION PALLET UNIT AS SHOWN ON PAGE 3. SEE GENERAL NOTE "T" ON PAGE 2.



SECTION B-B

("C" STACK, 15 PROJECTILE PALLET UNITS)

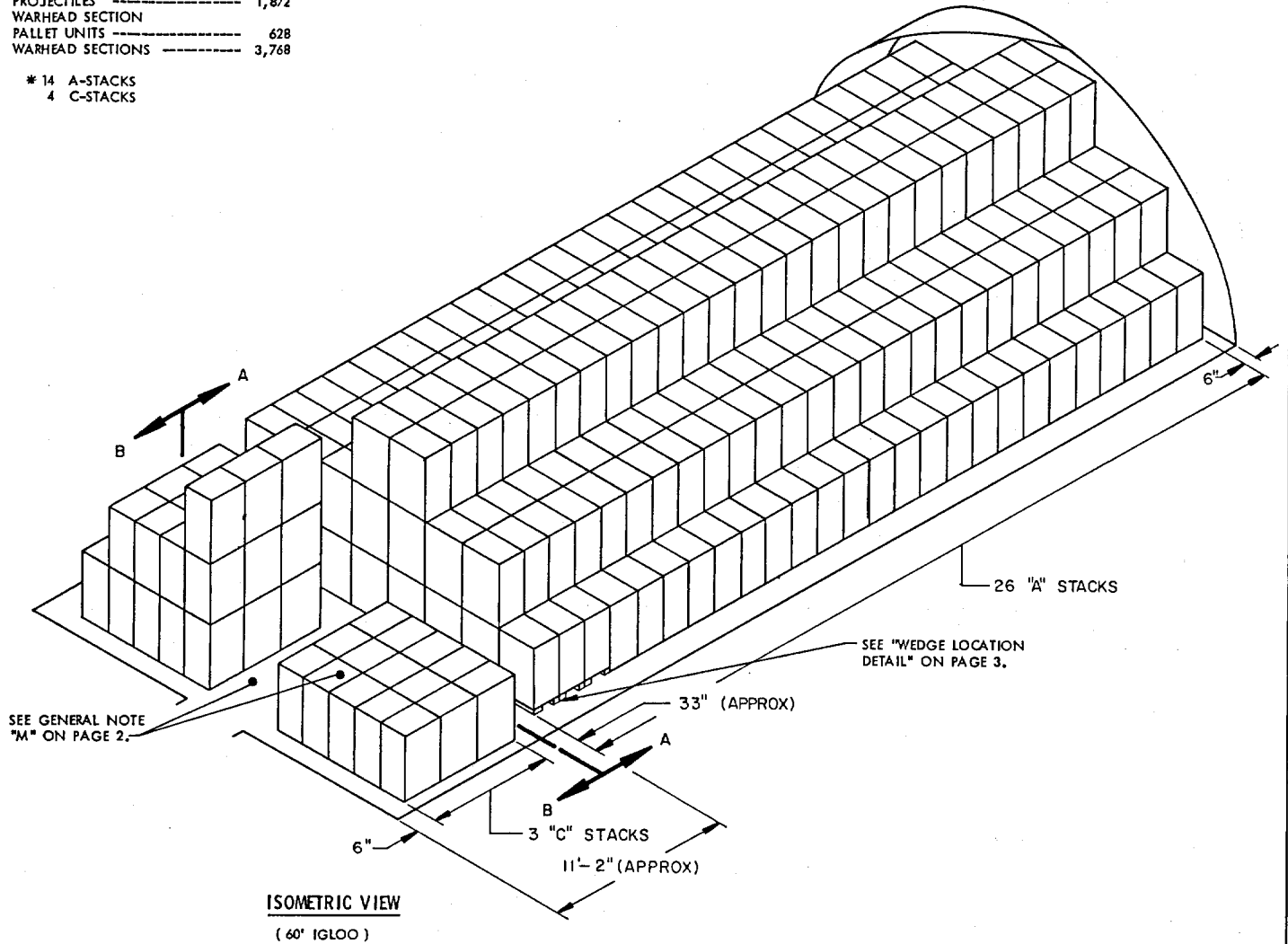
STORAGE IN 60' IGLOO

ITEM	QUANTITY
PROJECTILE PALLET UNITS -----	513
PROJECTILES -----	3,078
WARHEAD SECTION	
PALLET UNITS -----	1,029
WARHEAD SECTIONS -----	6,174

*** STORAGE IN 40' IGLOO**

ITEM	QUANTITY
PROJECTILE PALLET UNITS -----	312
PROJECTILES -----	1,872
WARHEAD SECTION	
PALLET UNITS -----	628
WARHEAD SECTIONS -----	3,768

- * 14 A-STACKS
- 4 C-STACKS



FOR "GENERAL NOTES" AND "MATERIAL SPECIFICATIONS", SEE PAGE 2. FOR "WEDGE DETAILS", SEE PAGE 3.

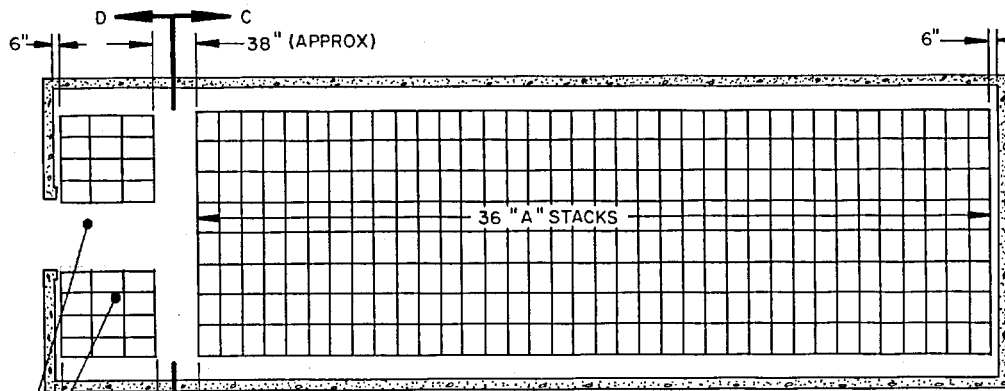
BILL OF MATERIAL (PER STACK)			
TYPE STACK	WEDGES	2" X 4" DUNNAGE LUMBER **	
		LINEAR FEET	BOARD FEET
A	4 REQD	31.5	21.00
C	2 REQD	17.50	11.67

** SEE GENERAL NOTES "E" AND "F" ON PAGE 2.

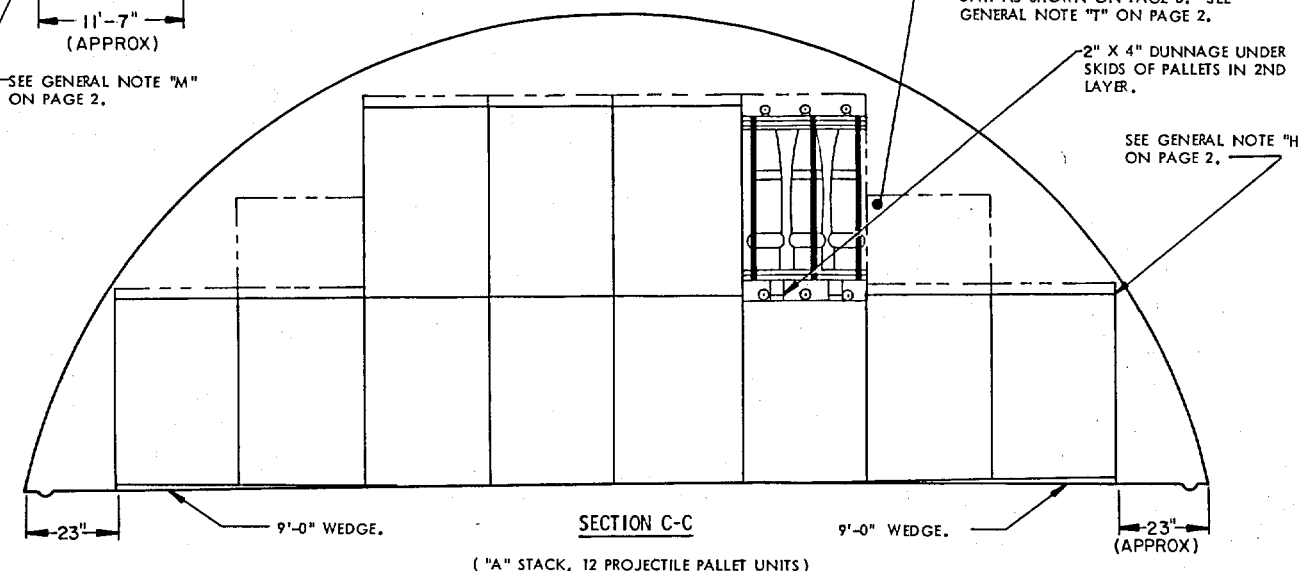
STORAGE IN 80' MAGAZINE

(10' HIGH)

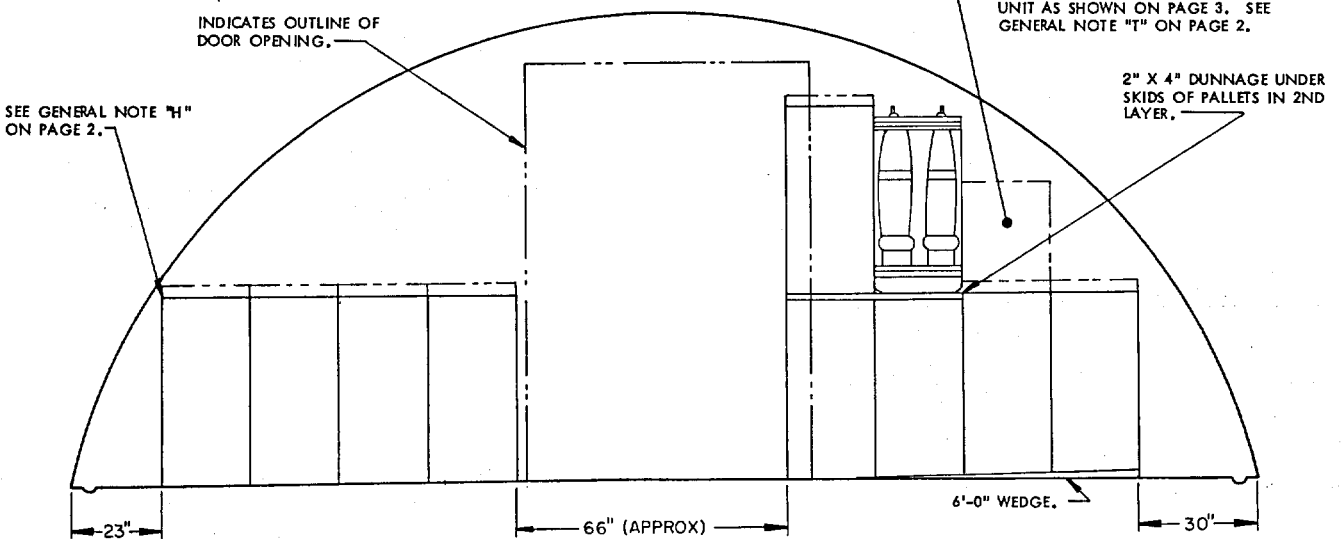
ITEM	QUANTITY
PROJECTILE PALLET UNITS	462
PROJECTILES	2,772
WARHEAD SECTION PALLET UNITS	996
WARHEAD SECTIONS	5,976



PLAN VIEW
(80' MAGAZINE)



SECTION C-C
("A" STACK, 12 PROJECTILE PALLET UNITS)

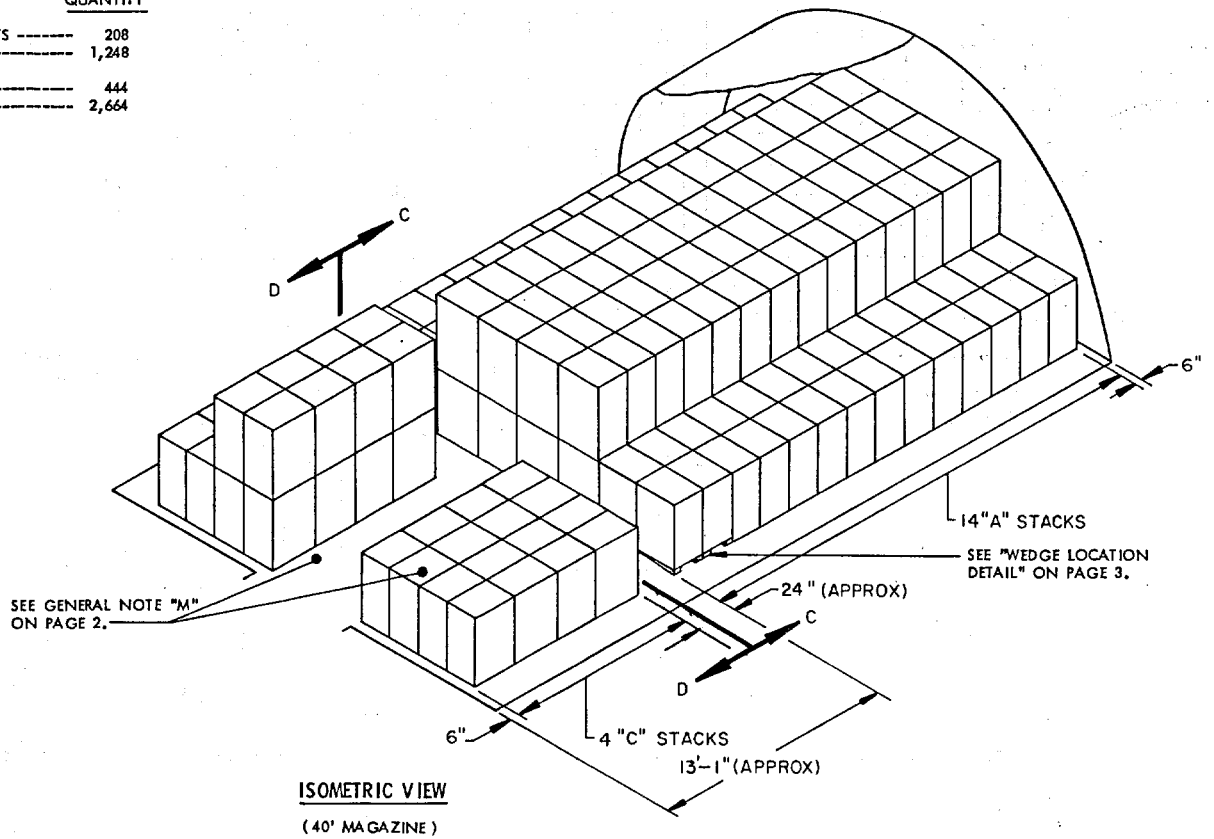


SECTION D-D
("C" STACK, 10 PROJECTILE PALLET UNITS)

STORAGE IN 40' MAGAZINE

(10' HIGH)

ITEM	QUANTITY
PROJECTILE PALLET UNITS -----	208
PROJECTILES -----	1,248
WARHEAD SECTION	
PALLET UNITS -----	444
WARHEAD SECTIONS -----	2,664



FOR "GENERAL NOTES" AND "MATERIAL SPECIFICATIONS," SEE PAGE 2. FOR "WEDGE DETAILS", SEE PAGE 3.

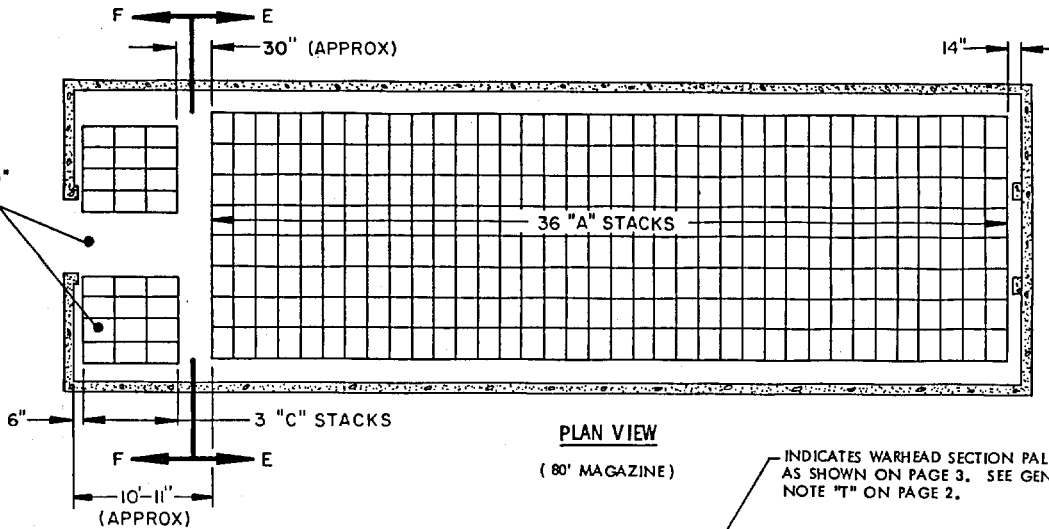
BILL OF MATERIAL (PER STACK)				
TYPE STACK	WEDGES		2" X 4" DUNNAGE LUMBER *	
	6'-0"	9'-0"	LINEAR FEET	BOARD FEET
A		4 REQD	14.00	9.33
C	2 REQD		7.00	4.67

* SEE GENERAL NOTES "E" AND "F" ON PAGE 2.

STORAGE IN 80' MAGAZINE
(11' HIGH)

ITEM	QUANTITY
PROJECTILE PALLET UNITS	537
PROJECTILES	3,222
WARHEAD SECTION PALLET UNITS	1,077
WARHEAD SECTIONS	6,462

SEE GENERAL NOTE "M" ON PAGE 2.



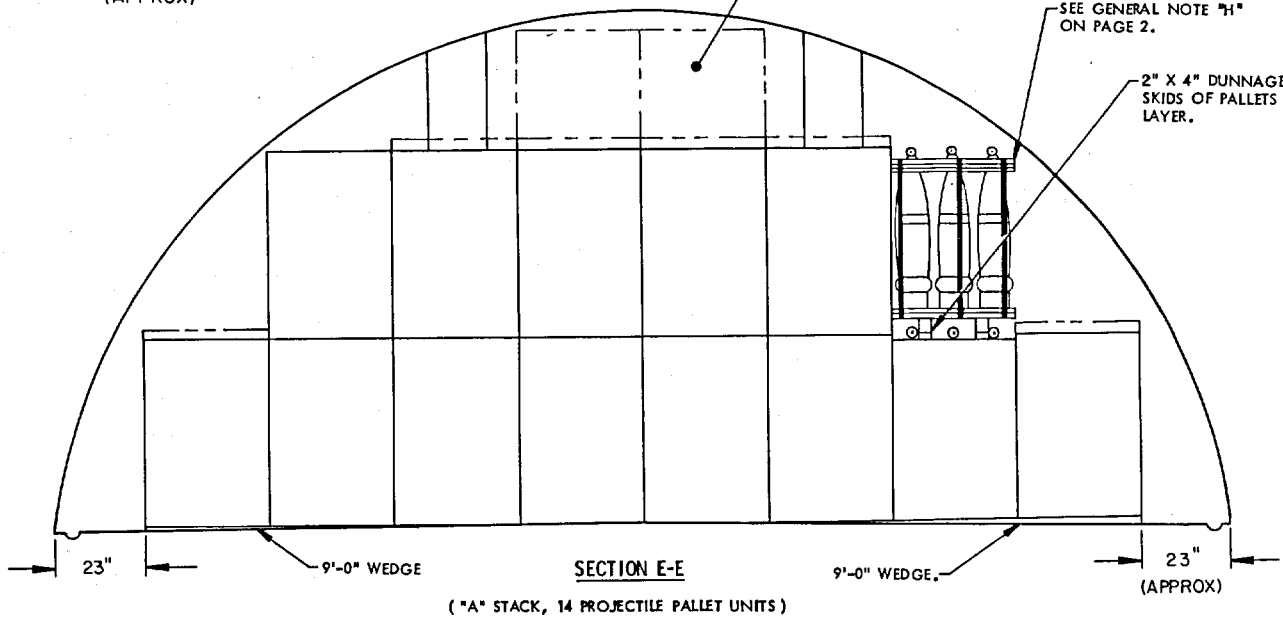
PLAN VIEW

(80' MAGAZINE)

INDICATES WARHEAD SECTION PALLET UNIT AS SHOWN ON PAGE 3. SEE GENERAL NOTE "T" ON PAGE 2.

SEE GENERAL NOTE "H" ON PAGE 2.

2" X 4" DUNNAGE UNDER SKIDS OF PALLETS IN 2ND LAYER.



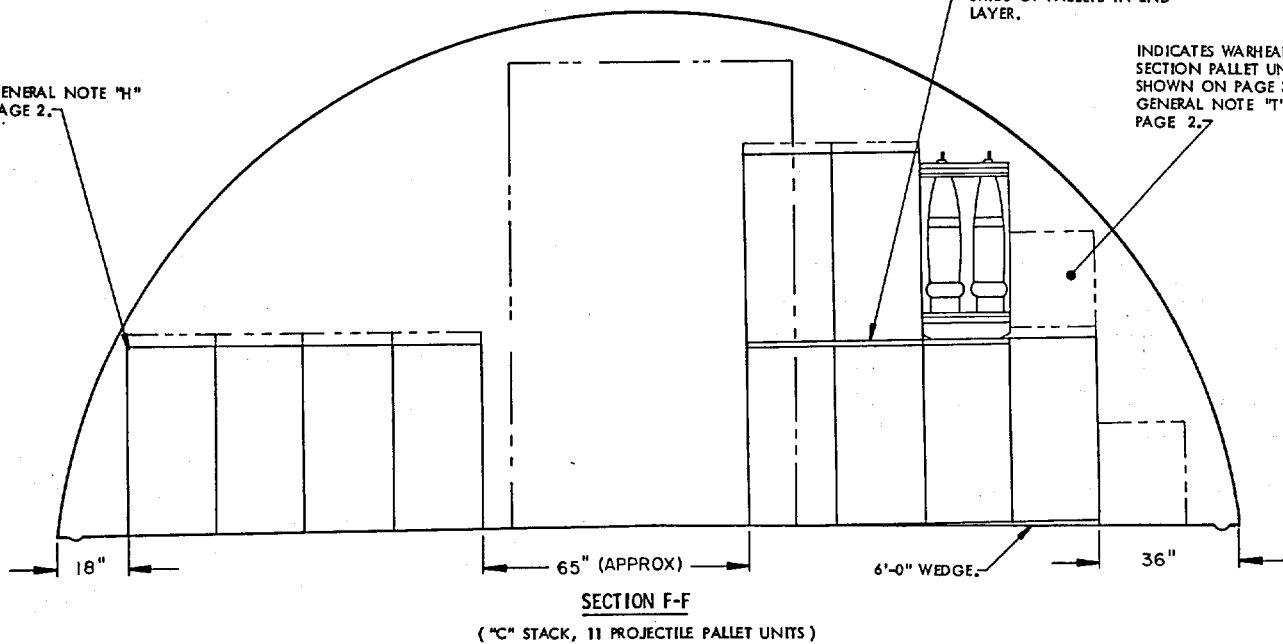
SECTION E-E

(*A* STACK, 14 PROJECTILE PALLET UNITS)

SEE GENERAL NOTE "H" ON PAGE 2.

2" X 4" DUNNAGE UNDER SKIDS OF PALLETS IN 2ND LAYER.

INDICATES WARHEAD SECTION PALLET UNIT AS SHOWN ON PAGE 3. SEE GENERAL NOTE "T" ON PAGE 2.

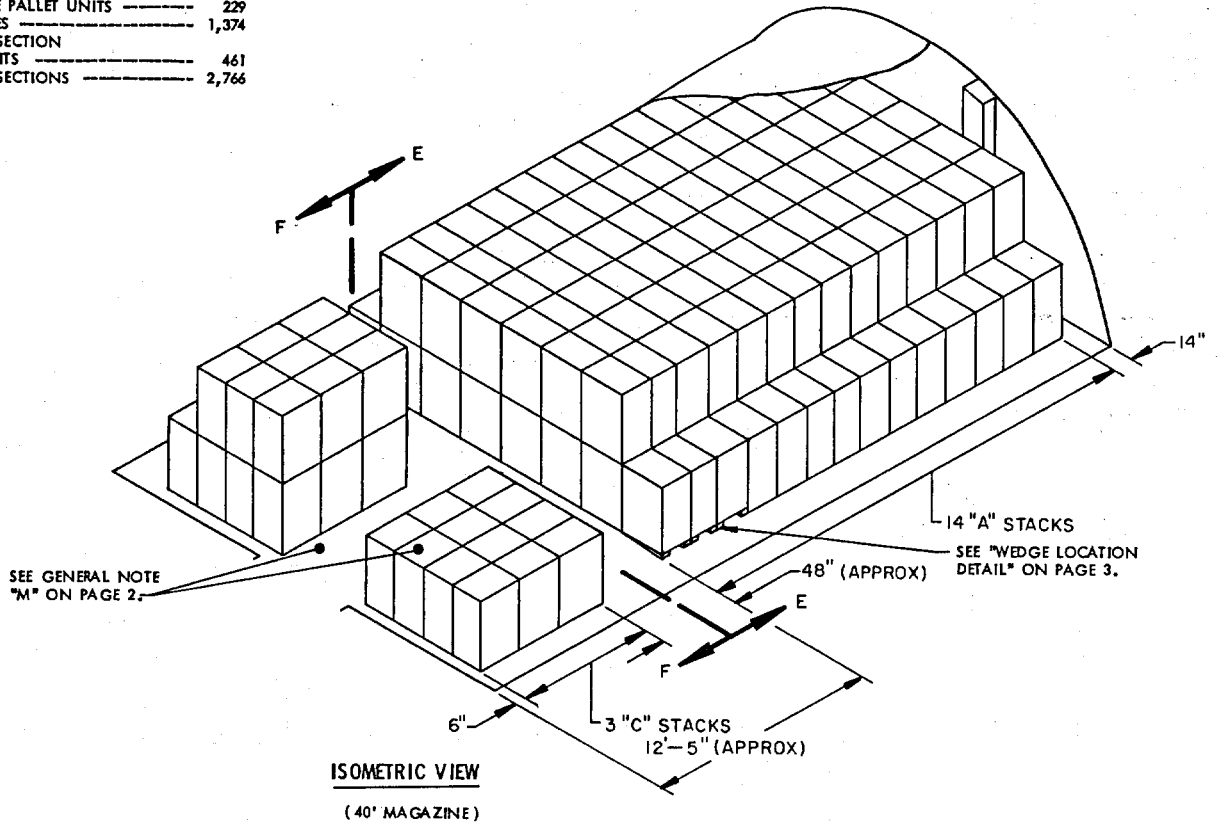


SECTION F-F

(*C* STACK, 11 PROJECTILE PALLET UNITS)

STORAGE IN 40' MAGAZINE
(11' HIGH)

ITEM	QUANTITY
PROJECTILE PALLET UNITS -----	229
PROJECTILES -----	1,374
WARHEAD SECTION PALLET UNITS -----	461
WARHEAD SECTIONS -----	2,766



FOR "GENERAL NOTES" AND "MATERIAL SPECIFICATIONS",
SEE PAGE 2. FOR "WEDGE DETAILS", SEE PAGE 3.

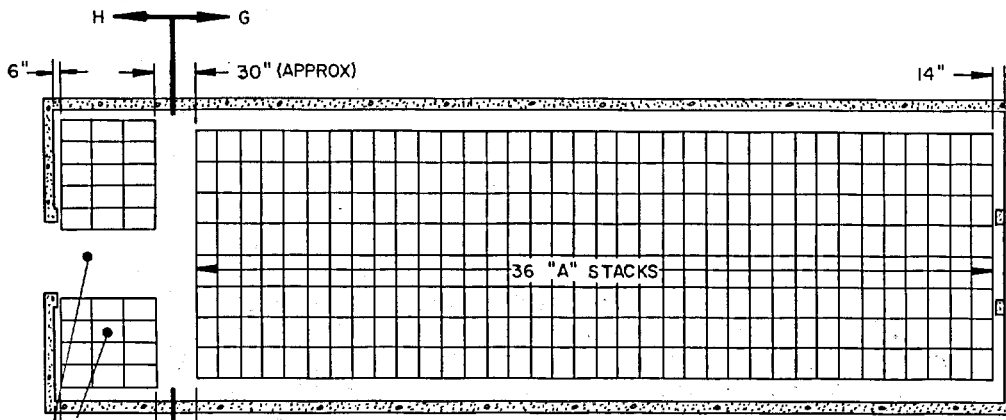
BILL OF MATERIAL (PER STACK)				
TYPE STACK	WEDGES		2" X 4" DUNNAGE LUMBER #	
	6'-0"	9'-0"	LINEAR FEET	BOARD FEET
A		4 REQD	21.00	14.00
C	2 REQD		10.50	7.00

* SEE GENERAL NOTES "E" AND "F" ON PAGE 2.

STORAGE IN 80' MAGAZINE

(12' HIGH)

ITEM	QUANTITY
PROJECTILE PALLET UNITS	540
PROJECTILES	3,240
WARHEAD SECTION PALLET UNITS	1,305
WARHEAD SECTIONS	7,830



PLAN VIEW

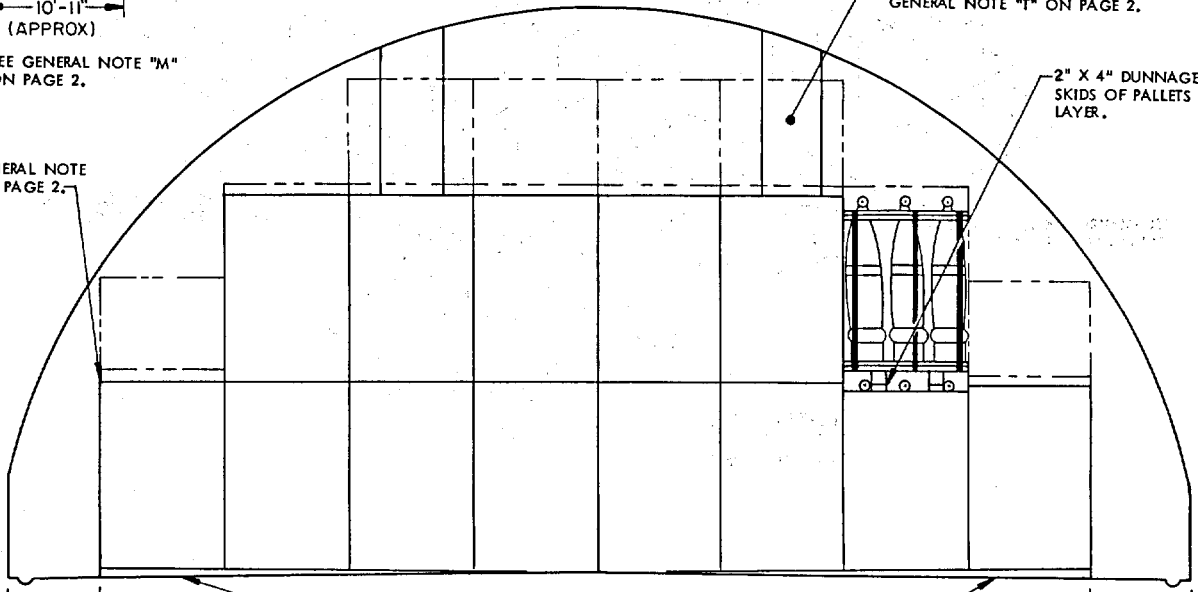
(80' MAGAZINE)

INDICATES WARHEAD SECTION PALLET UNIT AS SHOWN ON PAGE 3. SEE GENERAL NOTE "T" ON PAGE 2.

2" X 4" DUNNAGE UNDER SKIDS OF PALLET IN 2ND LAYER.

SEE GENERAL NOTE "M" ON PAGE 2.

SEE GENERAL NOTE "H" ON PAGE 2.



SECTION G-G

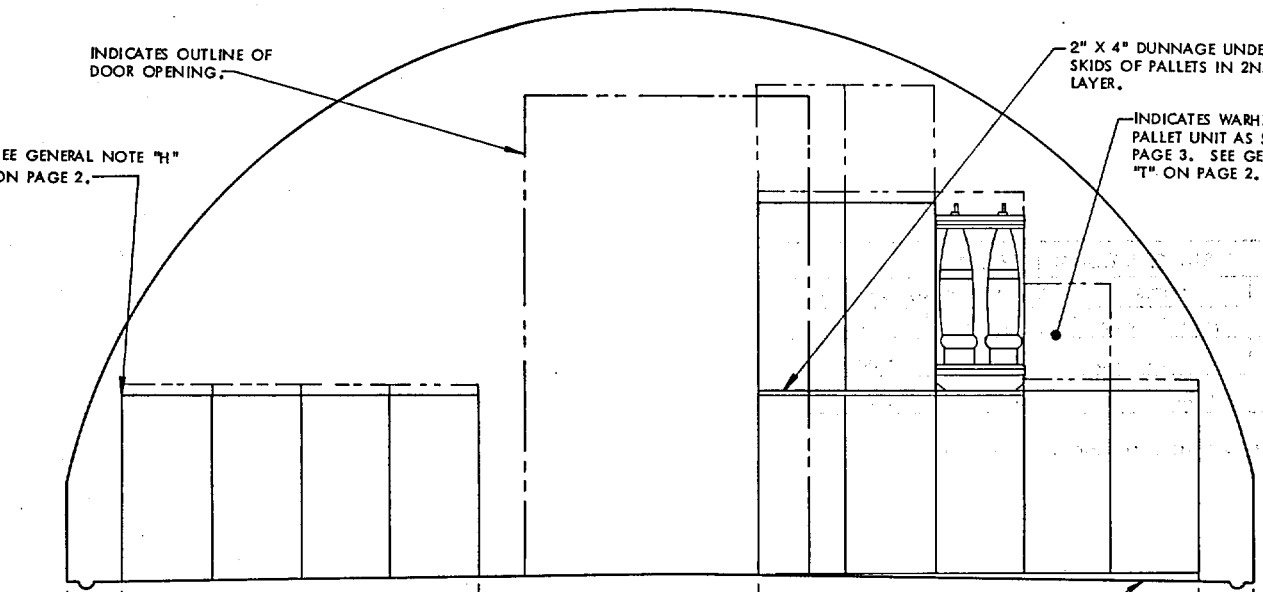
("A" STACK, 14 PROJECTILE PALLET UNITS)

INDICATES OUTLINE OF DOOR OPENING.

2" X 4" DUNNAGE UNDER SKIDS OF PALLET IN 2ND LAYER.

INDICATES WARHEAD SECTION PALLET UNIT AS SHOWN ON PAGE 3. SEE GENERAL NOTE "T" ON PAGE 2.

SEE GENERAL NOTE "H" ON PAGE 2.



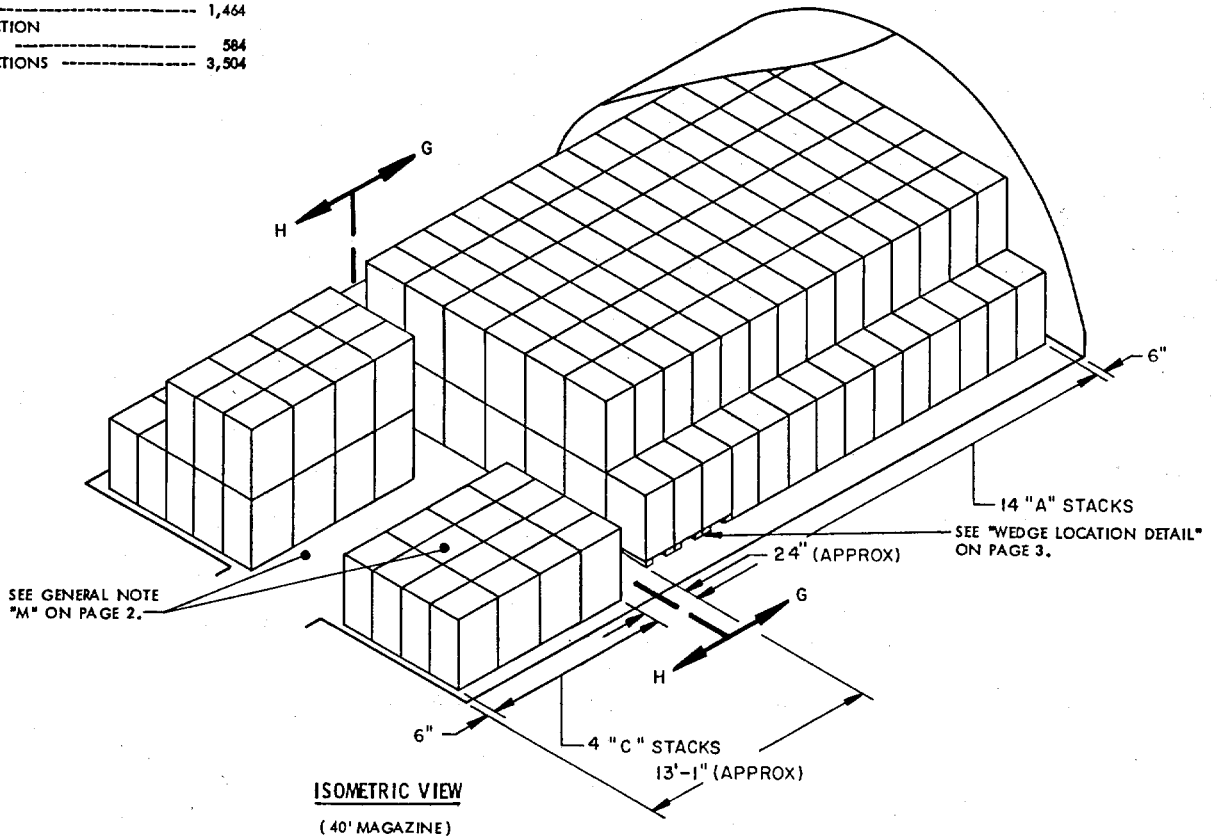
SECTION H-H

("C" STACK, 12 PROJECTILE PALLET UNITS)

STORAGE IN 40' MAGAZINE

(12' HIGH)

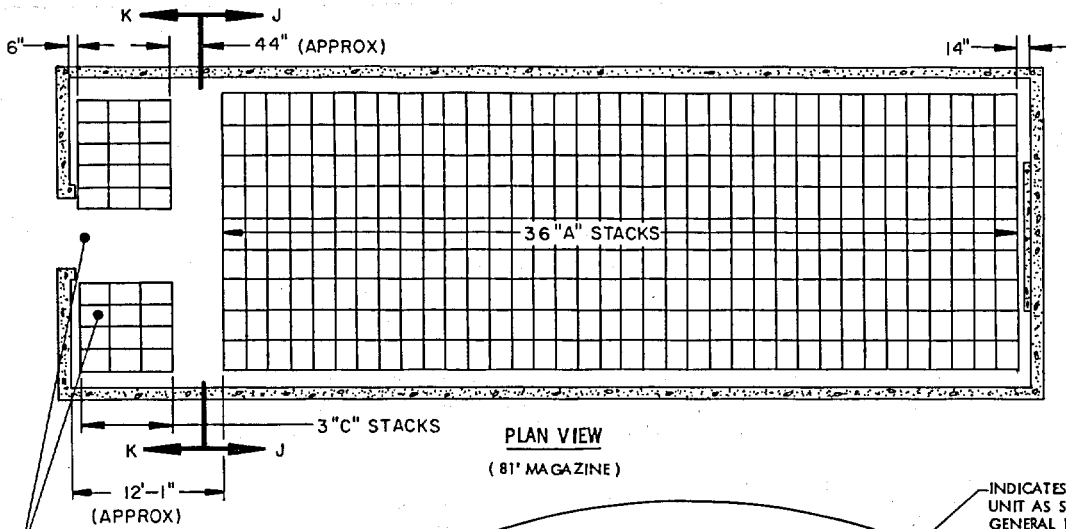
ITEM	QUANTITY
PROJECTILE PALLET UNITS -----	244
PROJECTILES -----	1,464
WARHEAD SECTION	
PALLET UNITS -----	584
WARHEAD SECTIONS -----	3,504



FOR "GENERAL NOTES" AND "MATERIAL SPECIFICATIONS", SEE PAGE 2. FOR "WEDGE DETAILS", SEE PAGE 3.

BILL OF MATERIAL (PER STACK)			
TYPE STACK	WEDGES	2" X 4" DUNNAGE LUMBER *	
	9'-0"	LINEAR FEET	BOARD FEET
A	4 REQD	21.00	14.00
C	2 REQD	10.50	7.00

* SEE GENERAL NOTES "E" AND "F" ON PAGE 2.

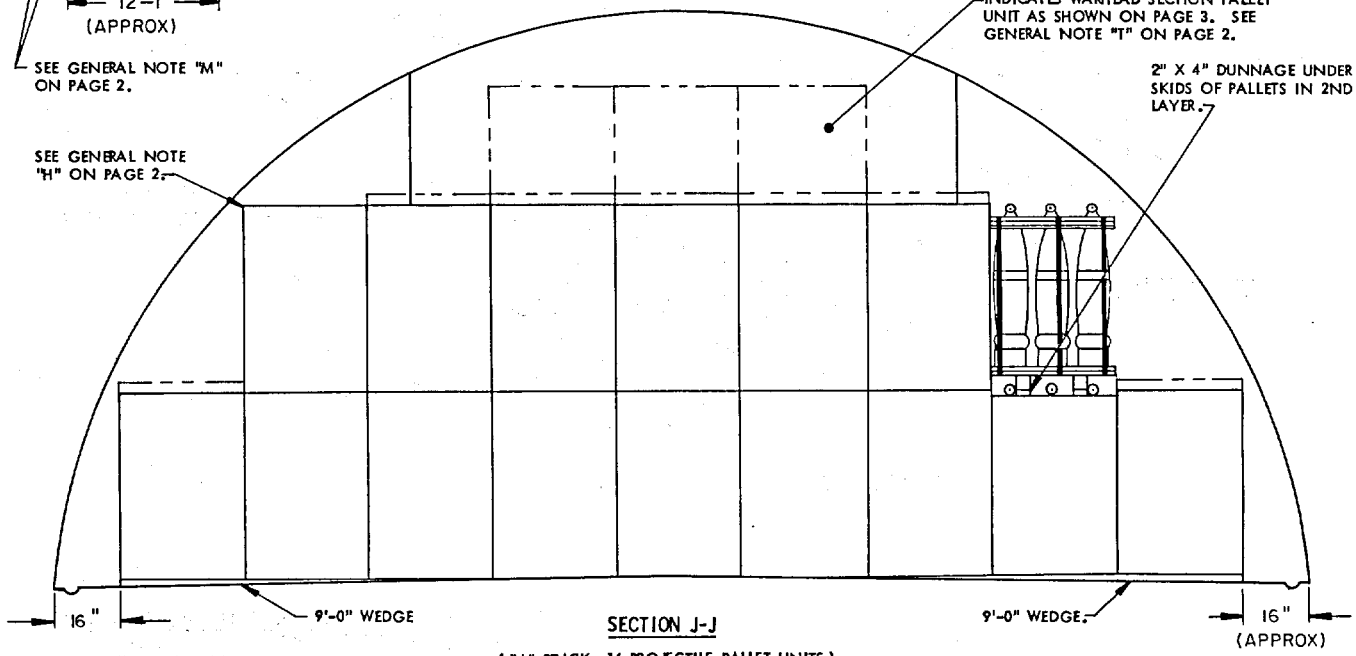


SEE GENERAL NOTE "M" ON PAGE 2.

SEE GENERAL NOTE "H" ON PAGE 2.

INDICATES WARHEAD SECTION PALLET UNIT AS SHOWN ON PAGE 3. SEE GENERAL NOTE "T" ON PAGE 2.

2" X 4" DUNNAGE UNDER SKIDS OF PALLETS IN 2ND LAYER.

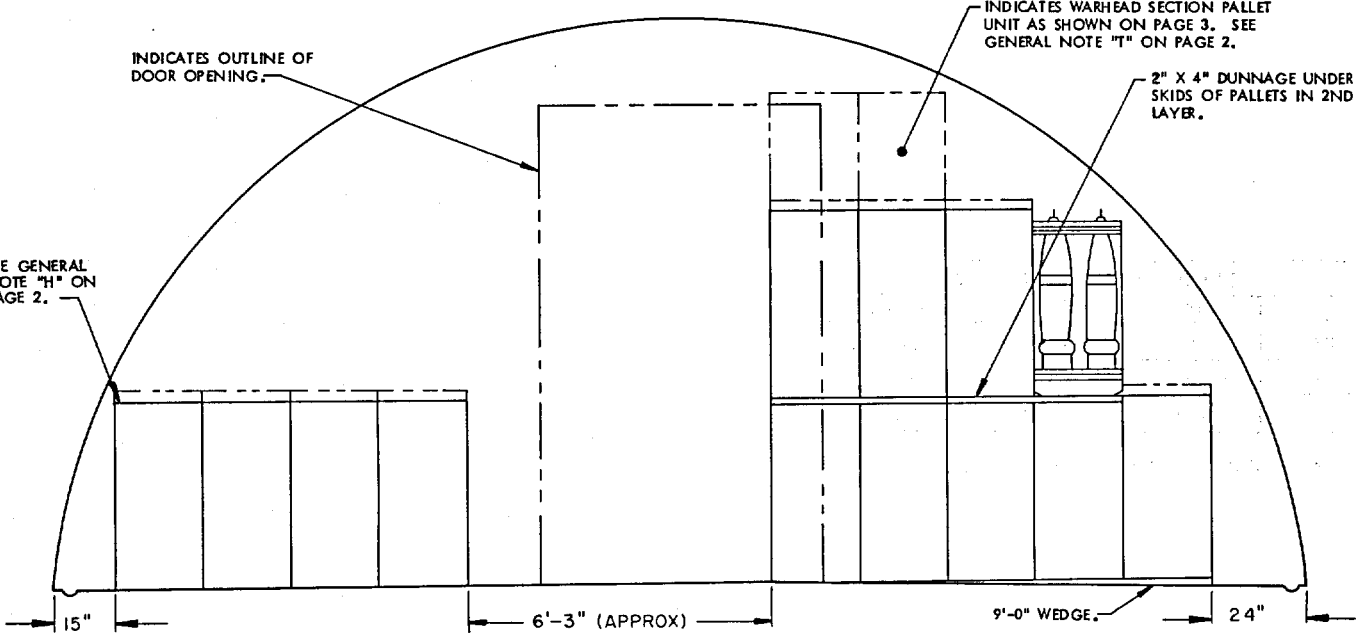


INDICATES OUTLINE OF DOOR OPENING.

INDICATES WARHEAD SECTION PALLET UNIT AS SHOWN ON PAGE 3. SEE GENERAL NOTE "T" ON PAGE 2.

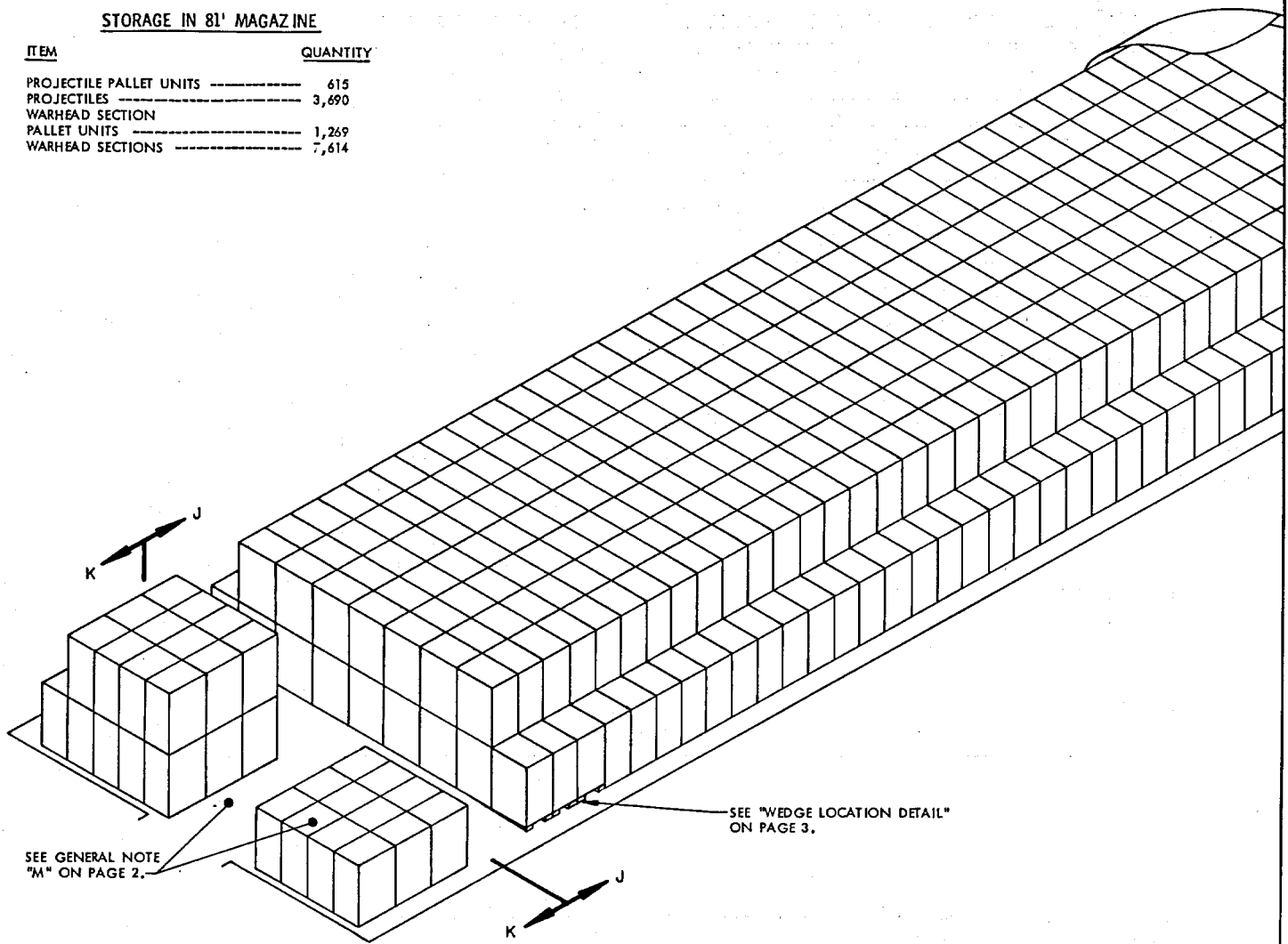
2" X 4" DUNNAGE UNDER SKIDS OF PALLETS IN 2ND LAYER.

SEE GENERAL NOTE "H" ON PAGE 2.



STORAGE IN 81' MAGAZINE

ITEM	QUANTITY
PROJECTILE PALLET UNITS -----	615
PROJECTILES -----	3,690
WARHEAD SECTION PALLET UNITS -----	1,269
WARHEAD SECTIONS -----	7,614

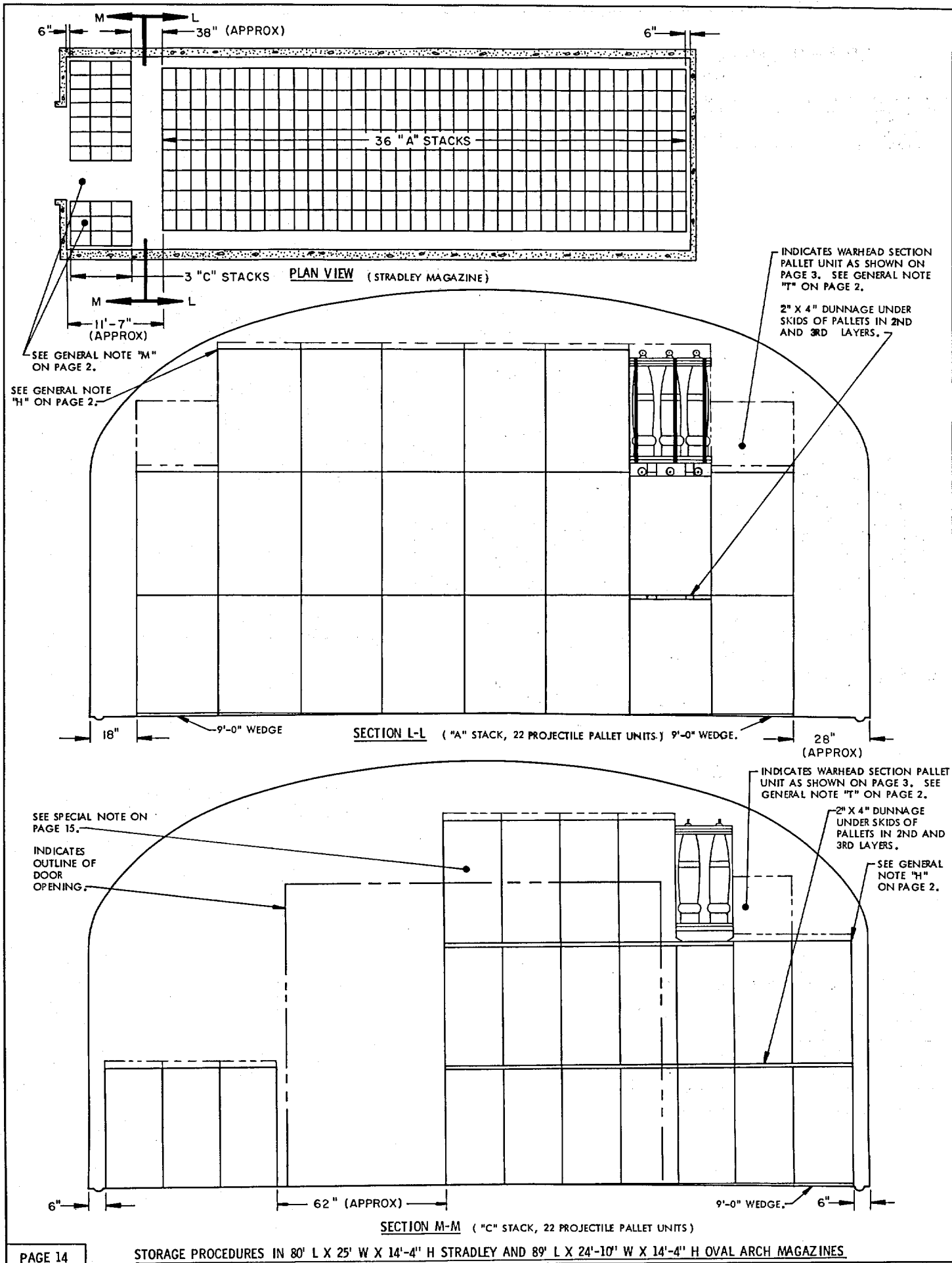


ISOMETRIC VIEW
(81' MAGAZINE)

FOR "GENERAL NOTES" AND "MATERIAL SPECIFICATIONS",
SEE PAGE 2. FOR "WEDGE DETAILS", SEE PAGE 3.

BILL OF MATERIAL (PER STACK)			
TYPE STACK	WEDGES	2" X 4" DUNNAGE LUMBER *	
	9'-0"	LINEAR FEET	BOARD FEET
A	4 REQD	24.50	16.33
C	2 REQD	14.00	9.33

* SEE GENERAL NOTES "E" AND "F" ON PAGE 2.



STORAGE IN STRADLEY MAGAZINE

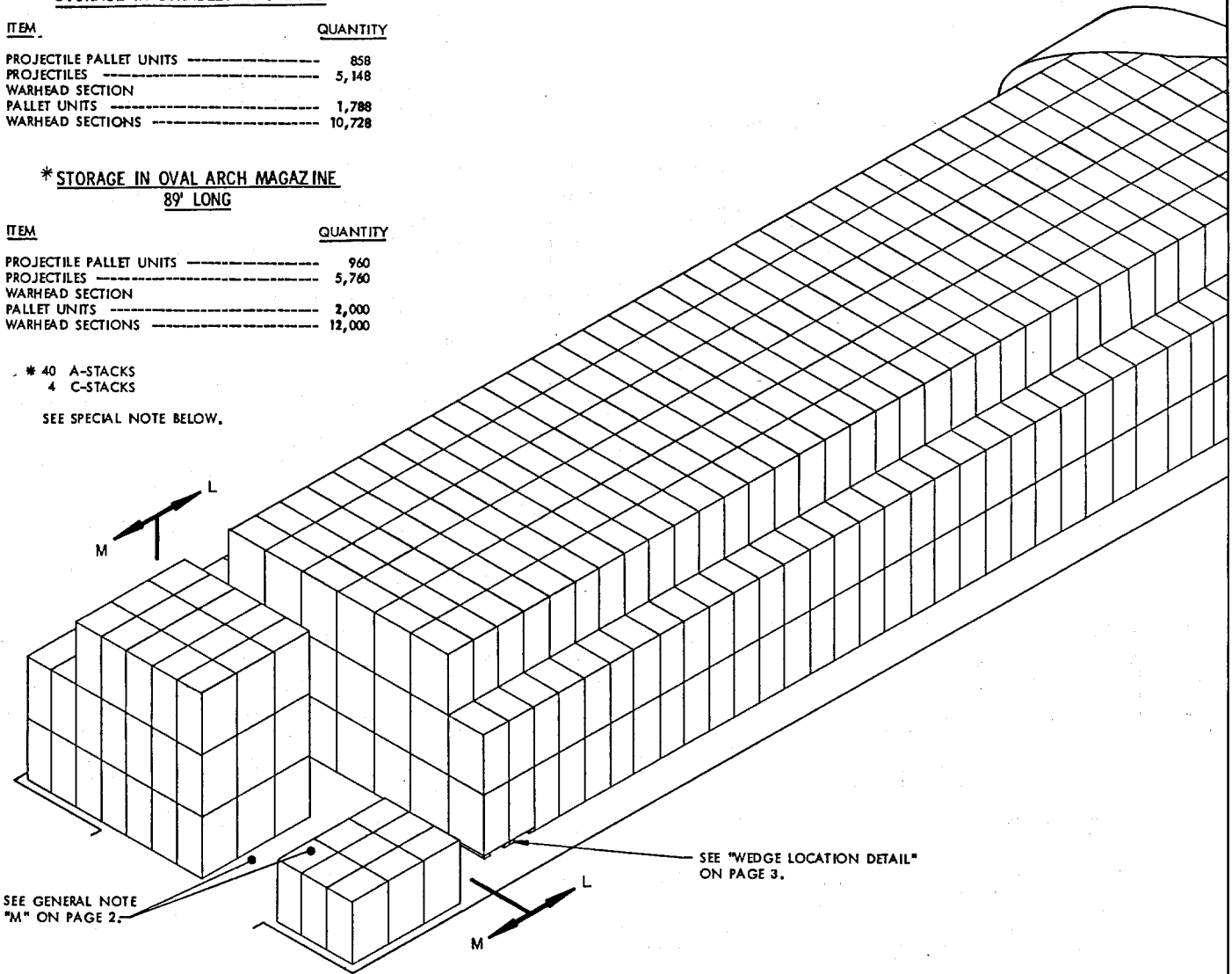
ITEM	QUANTITY
PROJECTILE PALLET UNITS -----	858
PROJECTILES -----	5,148
WARHEAD SECTION PALLET UNITS -----	1,788
WARHEAD SECTIONS -----	10,728

*** STORAGE IN OVAL ARCH MAGAZINE
89' LONG**

ITEM	QUANTITY
PROJECTILE PALLET UNITS -----	960
PROJECTILES -----	5,760
WARHEAD SECTION PALLET UNITS -----	2,000
WARHEAD SECTIONS -----	12,000

- * 40 A-STACKS
- 4 C-STACKS

SEE SPECIAL NOTE BELOW.



ISOMETRIC VIEW
(STRADLEY MAGAZINE)

SEE "WEDGE LOCATION DETAIL" ON PAGE 3.

SEE GENERAL NOTE "M" ON PAGE 2.

FOR "GENERAL NOTES" AND "MATERIAL SPECIFICATIONS", SEE PAGE 2. FOR "WEDGE DETAILS", SEE PAGE 3.

BILL OF MATERIAL (PER STACK)			
TYPE STACK	WEDGES	2" X 4" DUNNAGE LUMBER * *	
	9'-0"	LINEAR FEET	BOARD FEET
A	4 REQD	49.00	32.67
C	2 REQD	42.00	28.00

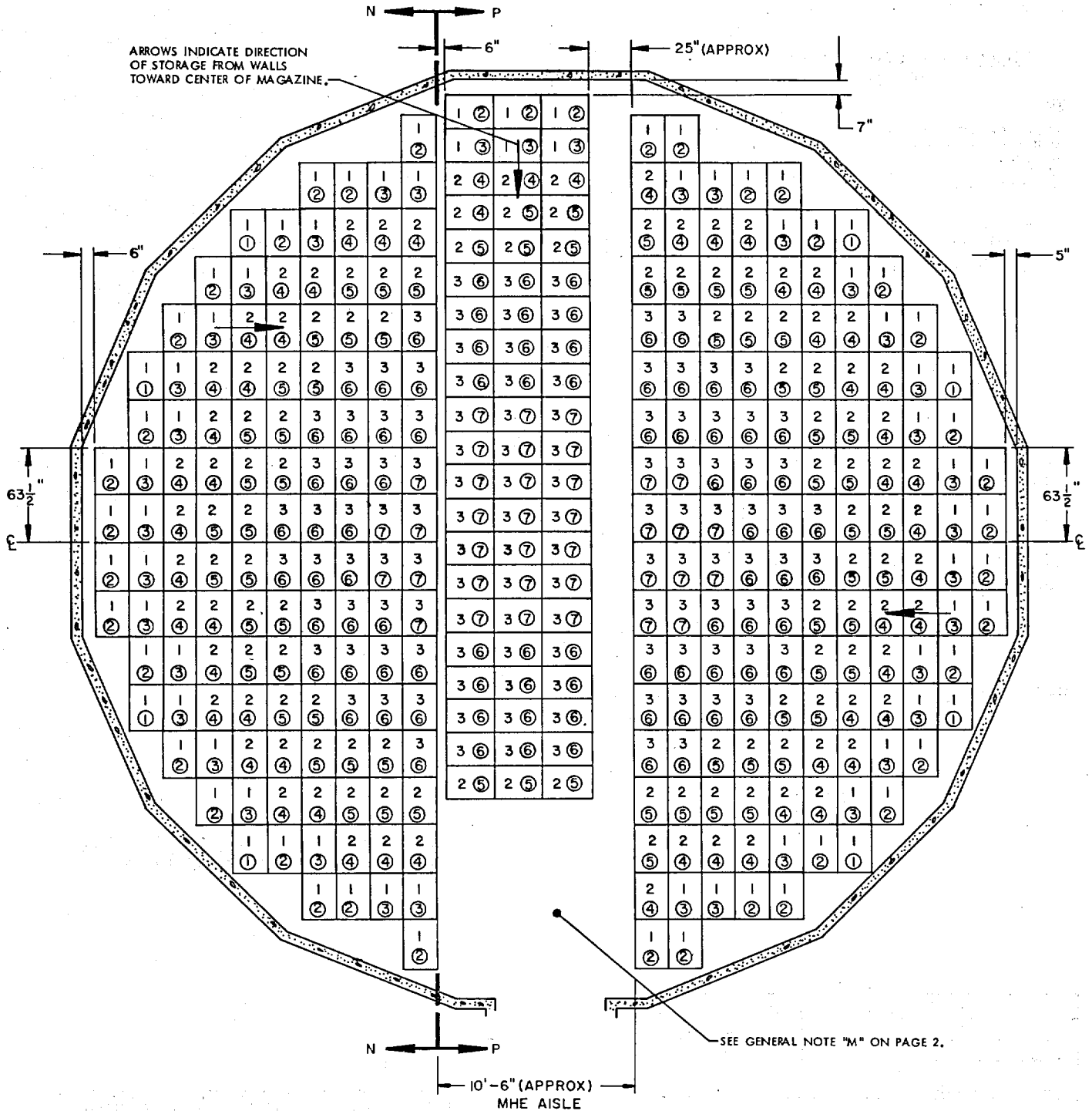
* * SEE GENERAL NOTES "E" AND "F" ON PAGE 2.

SPECIAL NOTE:

FOR STORAGE IN OVAL ARCH MAGAZINES, THE ONE (1) ROW OF PALLET UNITS ADJACENT TO THE OPERATING AISLE AS SHOWN IN "SECTION M-M" MUST BE OMITTED AND ONE (1) PALLET UNIT CAN BE ADDED ON THE OPPOSITE SIDE OF THE OPERATING AISLE BECAUSE OF THE RELATIVELY NARROW DOOR OPENING. THIS WILL REDUCE THE "C" STACKS TO 20 UNITS EACH.

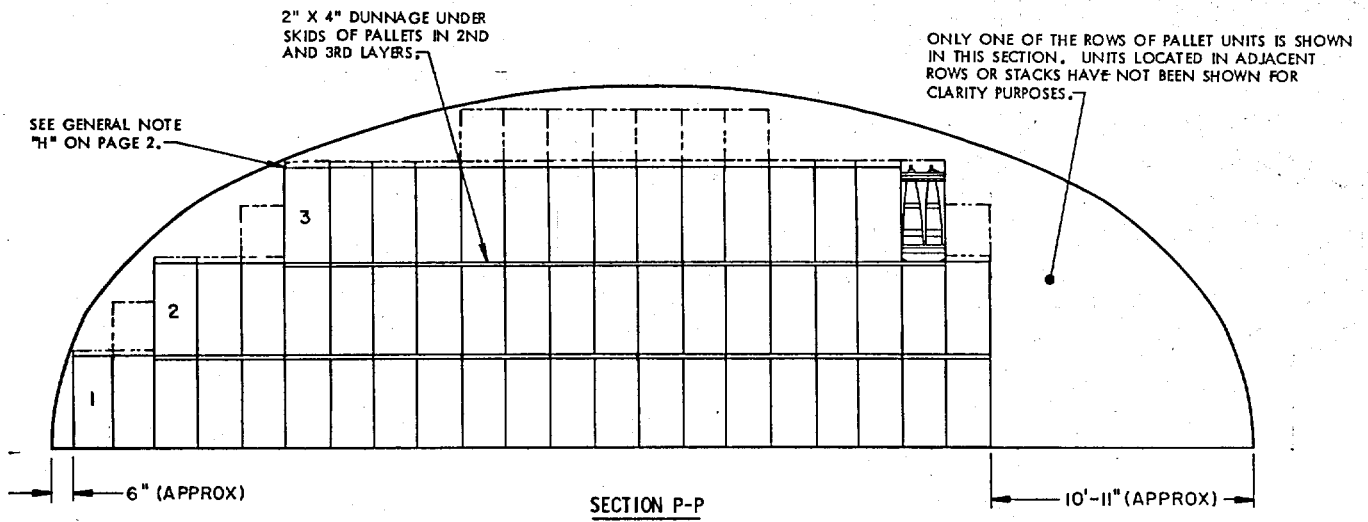
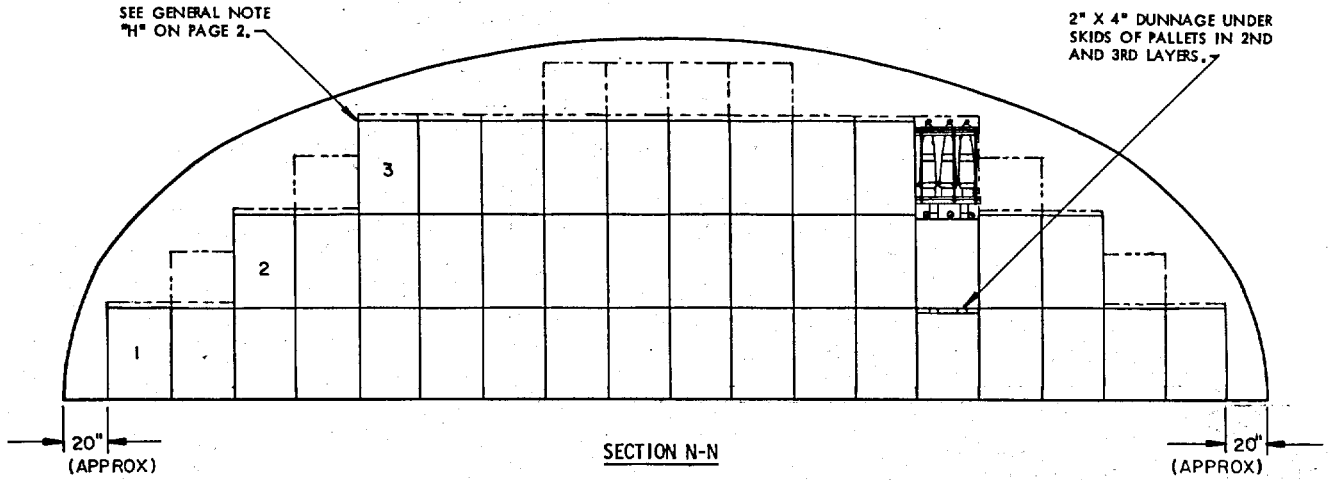
STORAGE IN 52' DIA. MAGAZINE

ITEM	QUANTITY
PROJECTILE PALLET UNITS	709
PROJECTILES	4,254
WARHEAD SECTION PALLET UNITS	1,536
WARHEAD SECTIONS	9,336



PLAN VIEW

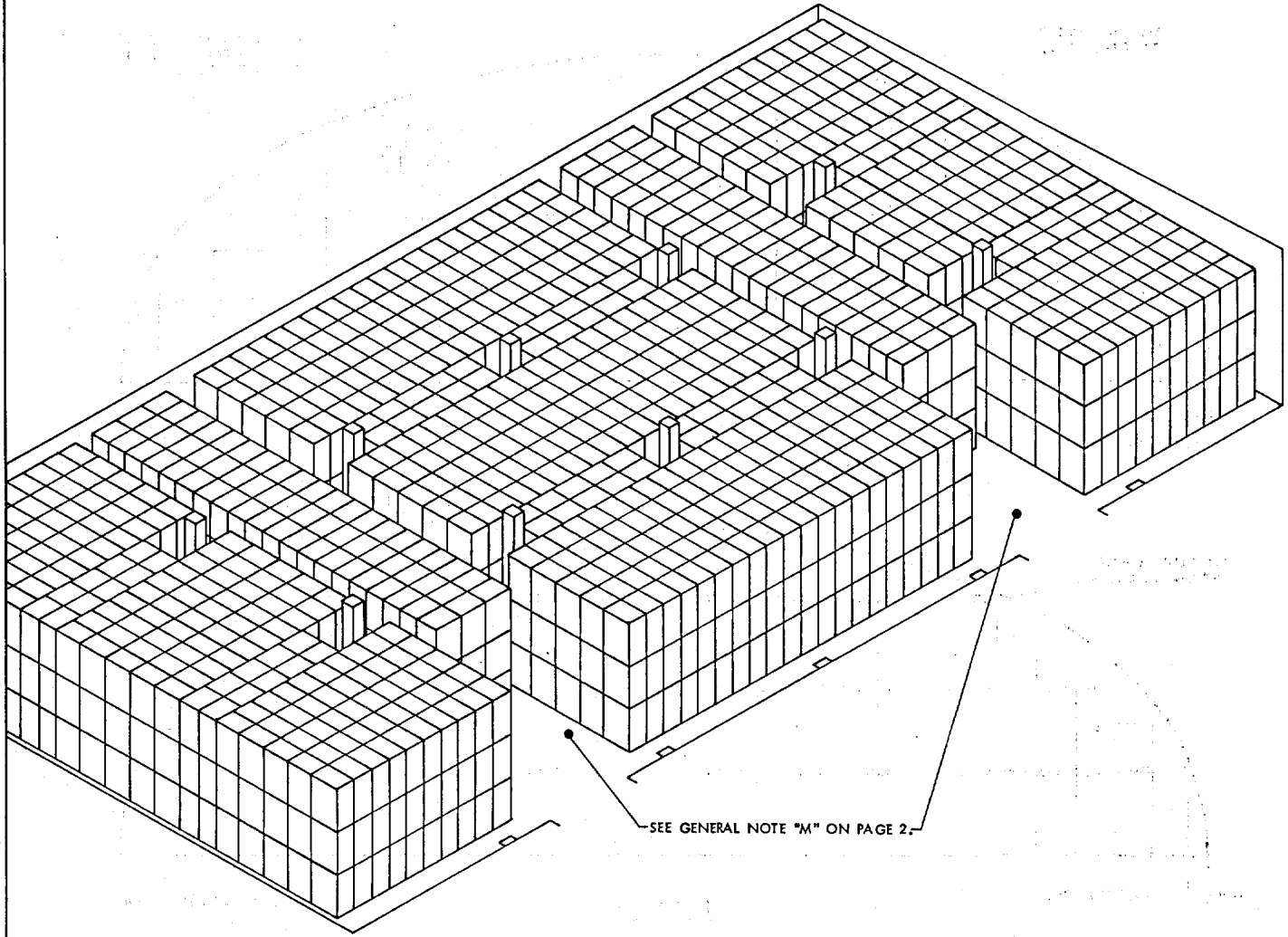
NOTE: NUMBERS WITHOUT CIRCLES INDICATE LAYERS HIGH THAT PROJECTILE PALLET UNITS ARE STACKED. NUMBERS INSIDE CIRCLES INDICATE LAYERS HIGH THAT WARHEAD SECTION PALLET UNITS ARE STACKED.



FOR "GENERAL NOTES" AND "MATERIAL SPECIFICATIONS",
SEE PAGE 2.

BILL OF MATERIAL (PER PALLET STACK)		
STACK HEIGHT	2" X 4" DUNNAGE LUMBER *	
	LINEAR FEET	BOARD FEET
2	3.50	2.33
3	7.00	4.67

* SEE GENERAL NOTES "E" AND "F" ON PAGE 2.



ISOMETRIC VIEW
(100' L X 50' W MAGAZINE)

FOR "GENERAL NOTES" AND "MATERIAL SPECIFICATIONS",
SEE PAGE 2.

BILL OF MATERIAL (PER PALLET STACK)

STACK HEIGHT	2" X 4" DUNNAGE LUMBER *	
	LINEAR FEET	BOARD FEET
2	3.5	2.33
3	7.00	4.67

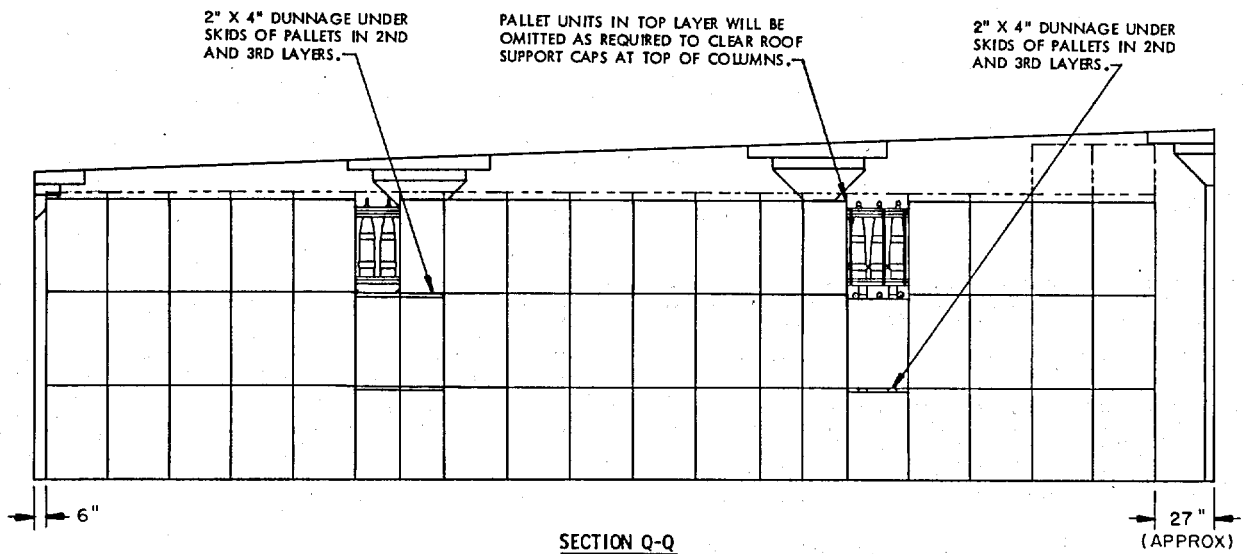
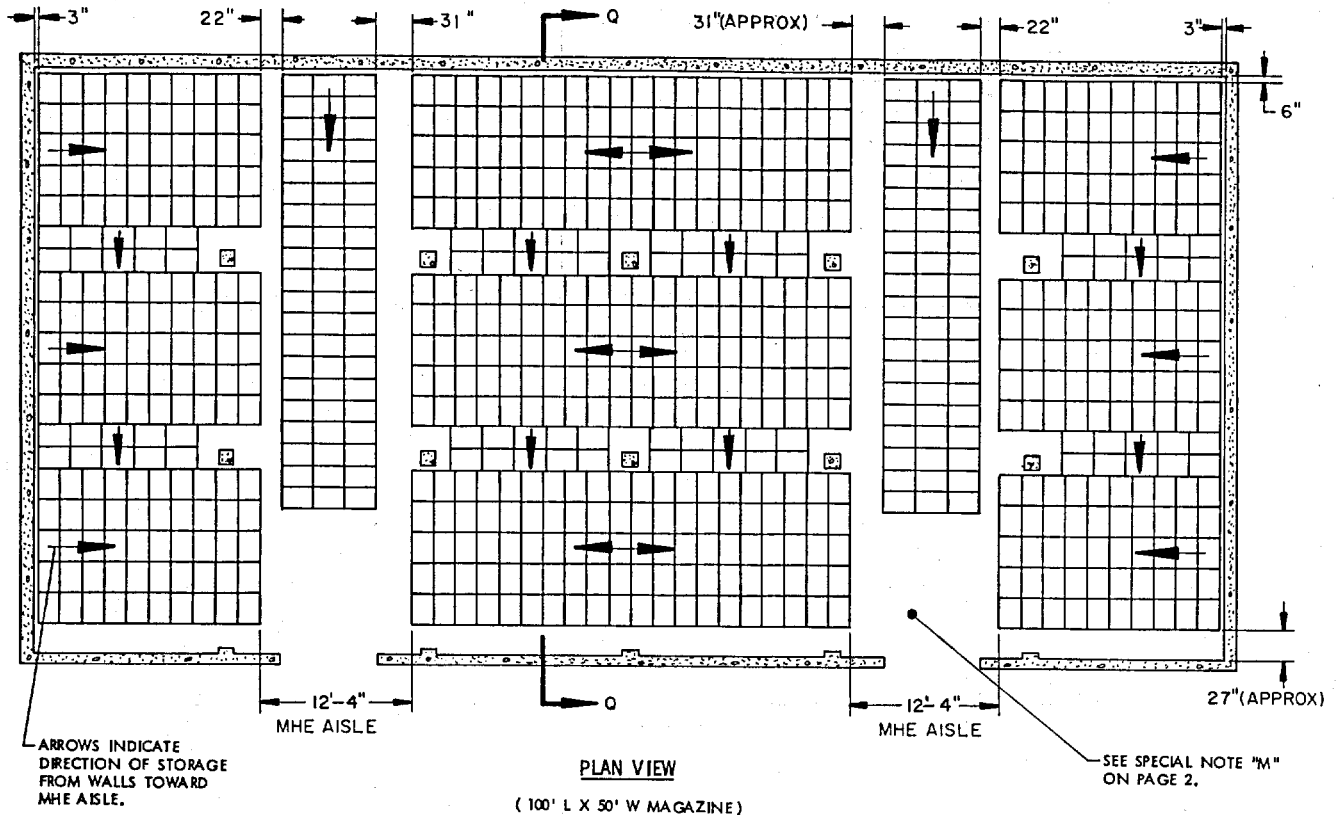
* SEE GENERAL NOTES "E" AND "F" ON PAGE 2.

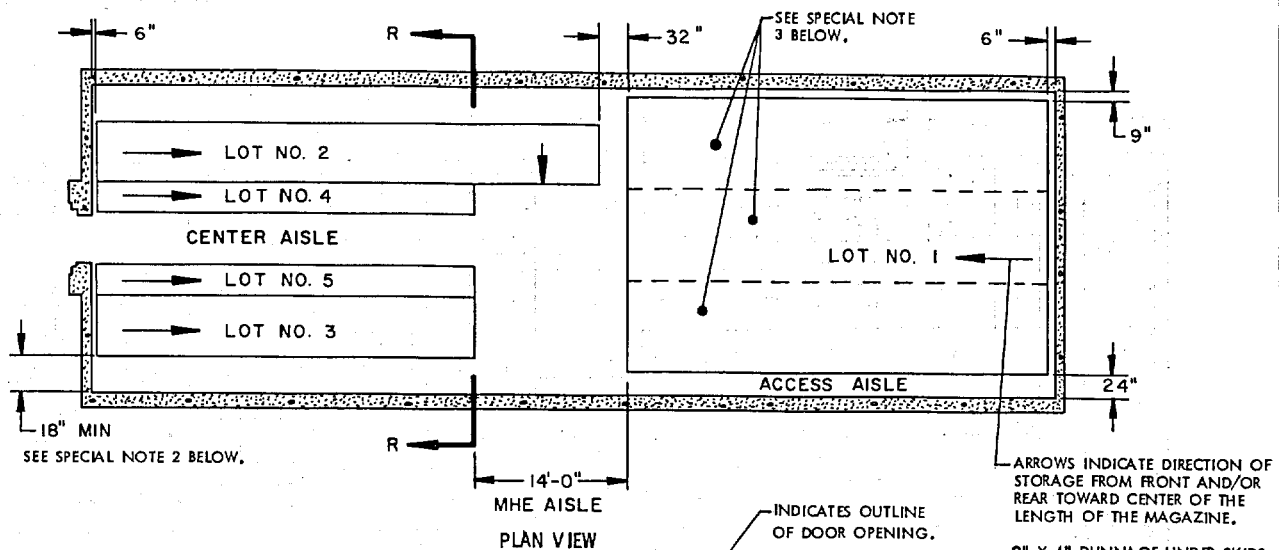
STORAGE IN 100' X 50' MAGAZINE

ITEM	QUANTITY
PROJECTILE PALLET UNITS -----	2,400
PROJECTILES -----	14,400
WARHEAD SECTION PALLET UNITS -----	4,880
WARHEAD SECTIONS -----	29,280

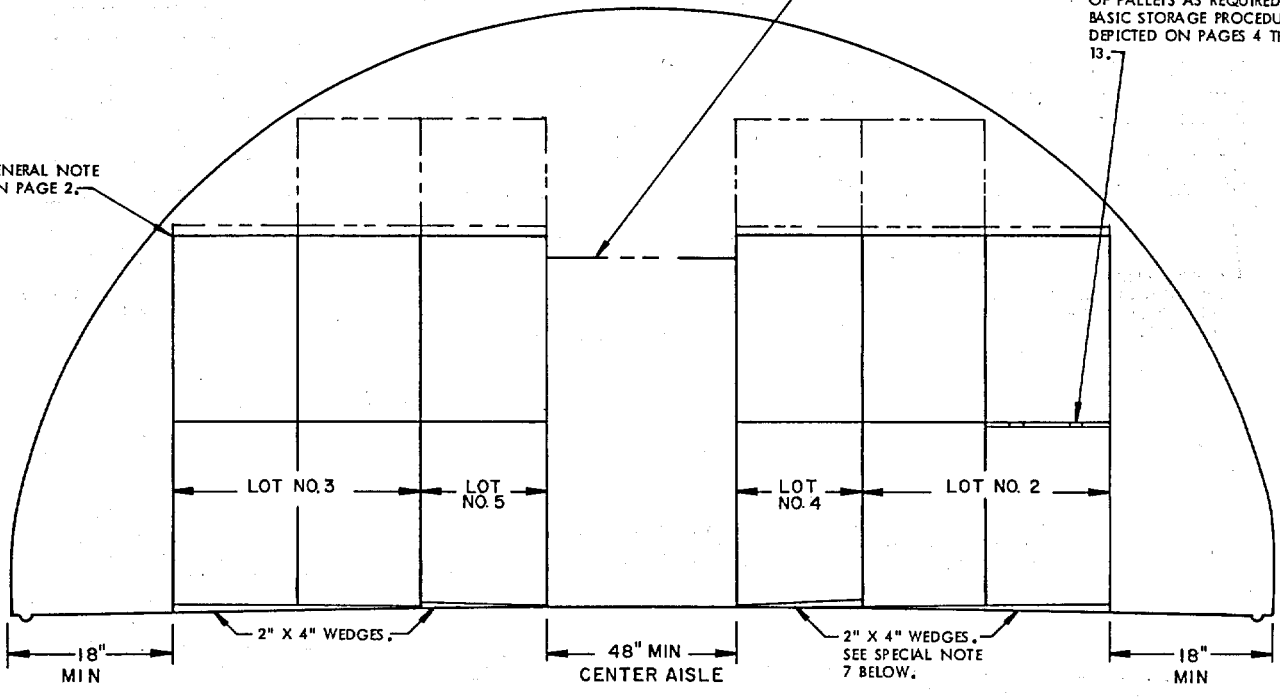
SPECIAL NOTE:

IF THE QUANTITY FOR A MAGAZINE IS TO BE REDUCED FROM WHAT IS SHOWN - DUE TO THE PERMITTED "EXPLOSIVE LIMIT" OR FOR ANY OTHER REASON, SUCH AS A LIMITED QUANTITY TO BE STORED - THE DELINEATED PROCEDURES ARE TO BE ADJUSTED BY OMITTING STACKS RATHER THAN BY OMITTING LAYERS.





PLAN VIEW



SECTION R-R

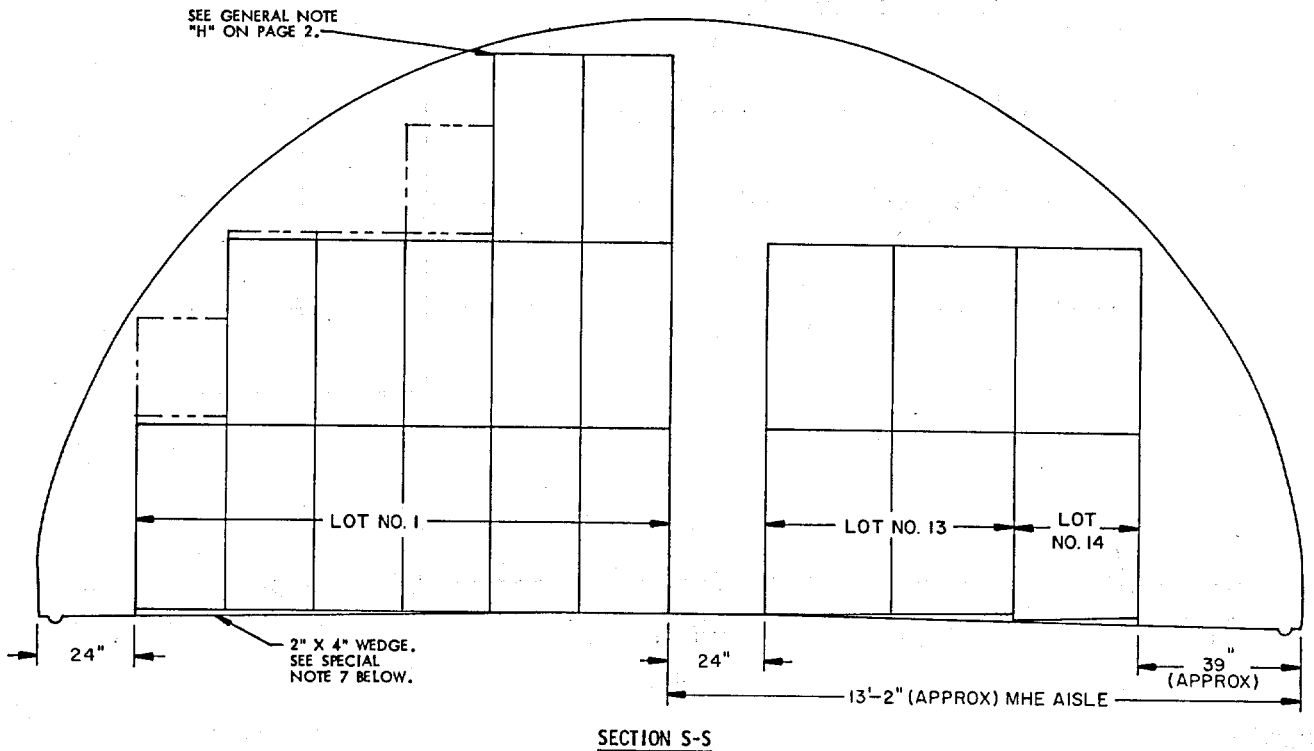
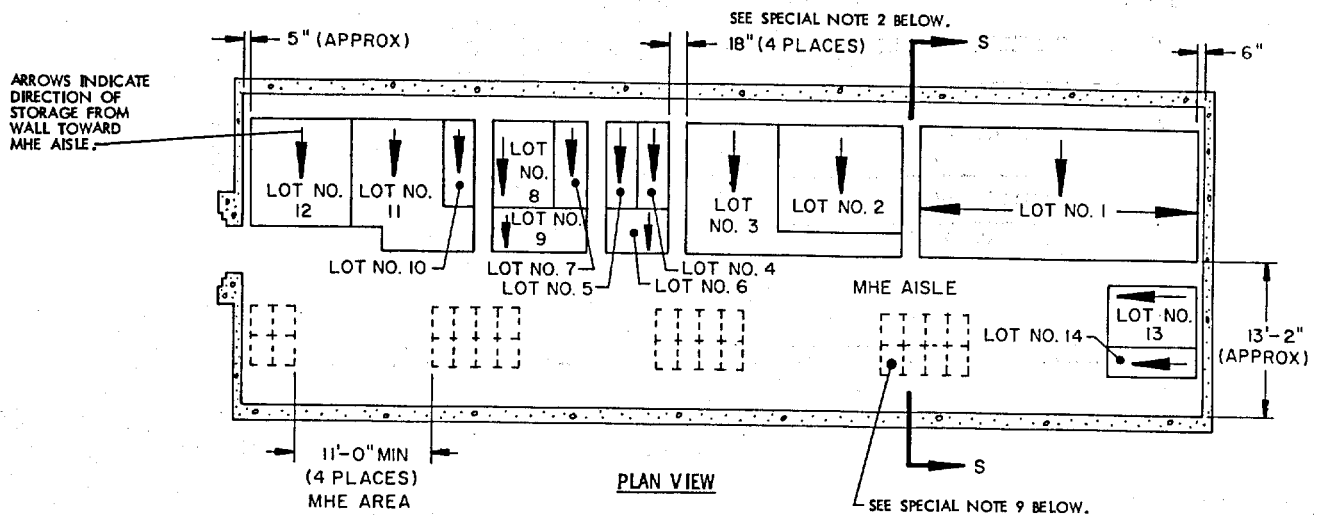
SPECIAL NOTES:

1. THE STORAGE PLANS AND CONFIGURATIONS SHOWN ON THIS PAGE ARE TYPICAL ONLY AND APPLY TO RELATIVELY LARGE LOTS. ADAPTATIONS MAY BE MADE AS NUMBER AND SIZES OF LOTS TO BE STORED IN MAGAZINE REQUIRE.
2. AN INSPECTION/INVENTORY AISLE MUST BE PROVIDED AT ONE SIDE OR END OF EACH LOT.
3. GENERALLY, THE LARGEST LOT SHOULD BE STORED IN THE REAR OF THE MAGAZINE. HOWEVER, THE REAR AREA MAY BE USED TO STORE MORE THAN ONE LOT BY ERECTING ROWS SIMILAR TO THOSE SHOWN IN THE FRONTAL AREA. A CENTER AISLE WILL NOT BE REQUIRED IN THE REAR AREA AS LONG AS EACH LOT IS ACCESSIBLE FOR REMOVAL AND INSPECTION/INVENTORY IN ACCORDANCE WITH OTHER CRITERIA SPECIFIED IN THESE SPECIAL NOTES AND IN THE GENERAL NOTES ON PAGE 2.
4. EACH LOT WITHIN THE MAGAZINE MUST BE ACCESSIBLE FOR MOVEMENT BY MHE. A SINGLE-LOT OF PALLET UNITS IS CONSIDERED "ACCESSIBLE" IF NO MORE THAN TWELVE (12) "LIFTS" OF ANOTHER LOT OR LOTS HAVE TO BE MADE TO GAIN ACCESS TO THAT LOT. THE TERM "LIFT" MEANS HANDLING AND MOVING NOT MORE THAN TWO (2) PALLET UNITS OF PROJECTILES AT ONE TIME.
5. FOR STORAGE OF MULTIPLE LOTS, THE DISTANCE FROM THE SIDEWALL WILL BE BASED ON THE OVERHEAD CLEARANCE REQUIRED FOR MHE.

(SPECIAL NOTES CONTINUED)

6. EACH LOT MUST BE STORED TWO (2) UNITS (MINIMUM) WIDE TO ACCOMMODATE WIDTH OF MHE DURING OPERATIONS, EXCEPT FOR A ROW ADJACENT TO A CENTER AISLE.
7. LENGTH OF 2" X 4" WEDGES WILL BE DETERMINED BY THE WIDTH OF THE LOT IN ROWS. WEDGES WILL NOT EXTEND INTO AISLE OR UNDER ADJACENT LOTS.
8. WHEN TWO LOTS ARE STORED ADJACENT TO EACH OTHER, THEY SHOULD BE SEPARATED BY AT LEAST 1" TO PROVIDE CLEARANCE FOR REMOVAL OF EITHER LOT.

(CONTINUED AT RIGHT)



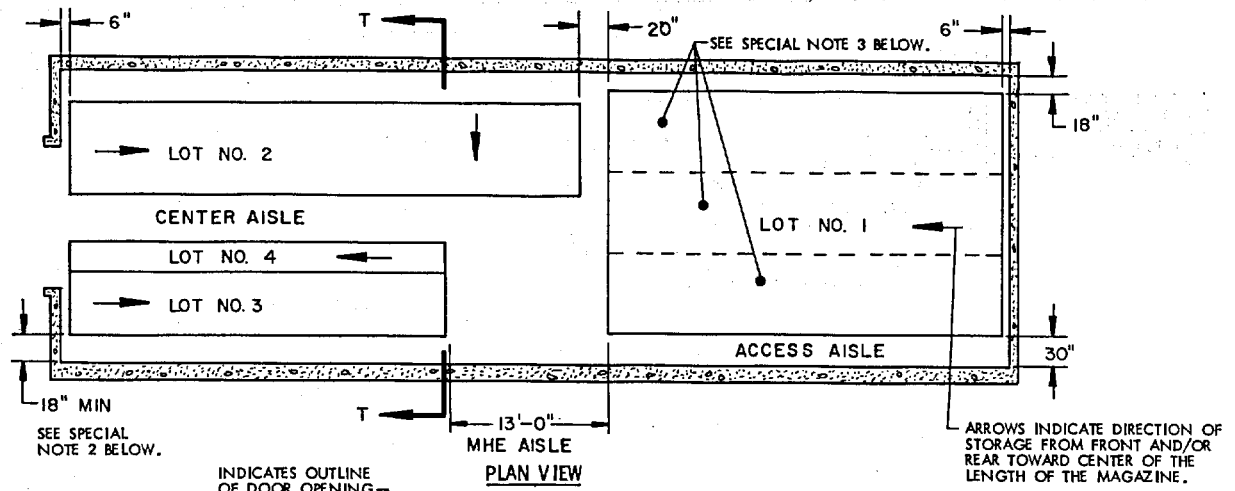
SPECIAL NOTES:

1. THE STORAGE PLANS AND CONFIGURATIONS SHOWN ON THIS PAGE ARE TYPICAL ONLY AND APPLY TO STORAGE OF NUMEROUS SMALL LOTS. ADAPTATIONS MAY BE MADE AS NUMBER AND SIZES OF LOTS TO BE STORED IN MAGAZINE REQUIRE.
2. AN INSPECTION/INVENTORY AISLE NOT LESS THAN 18" WIDE MUST BE PROVIDED AT ONE SIDE OF EACH "BURIED" LOT.
3. GENERALLY, THE LARGEST LOT SHOULD BE STORED IN THE REAR OF THE MAGAZINE. HOWEVER, THE REAR AREA MAY BE USED TO STORE MORE THAN ONE LOT BY ERECTING STACKS SIMILAR TO THOSE SHOWN IN THE FRONTAL AREA. AN MHE AISLE WILL BE REQUIRED ON ONE SIDE OF THE MAGAZINE, AND EACH LOT MUST BE ACCESSIBLE FOR REMOVAL AND INSPECTION/INVENTORY IN ACCORDANCE WITH OTHER CRITERIA SPECIFIED IN THESE SPECIAL NOTES AND IN THE GENERAL NOTES ON PAGE 2.
4. EACH LOT WITHIN THE MAGAZINE MUST BE ACCESSIBLE FOR MOVEMENT BY MHE. A SINGLE-LOT OF PALLET UNITS IS CONSIDERED "ACCESSIBLE" IF NO MORE THAN TWELVE (12) "LIFTS" OF ANOTHER LOT OR LOTS HAVE TO BE MADE TO GAIN ACCESS TO THAT LOT. THE TERM "LIFT" MEANS HANDLING AND MOVING NOT MORE THAN TWO (2) PALLET UNITS OF PROJECTILES AT ONE TIME.
5. FOR STORAGE OF MULTIPLE LOTS, THE DISTANCE FROM THE SIDEWALL WILL BE BASED ON THE OVERHEAD CLEARANCE REQUIRED FOR MHE.
6. EACH LOT MUST BE STORED TWO (2) UNITS (MINIMUM) WIDE TO ACCOMMODATE WIDTH OF MHE DURING OPERATIONS, EXCEPT FOR A ROW ADJACENT TO AN INSPECTION/INVENTORY AISLE.

(CONTINUED AT RIGHT)

(SPECIAL NOTES CONTINUED)

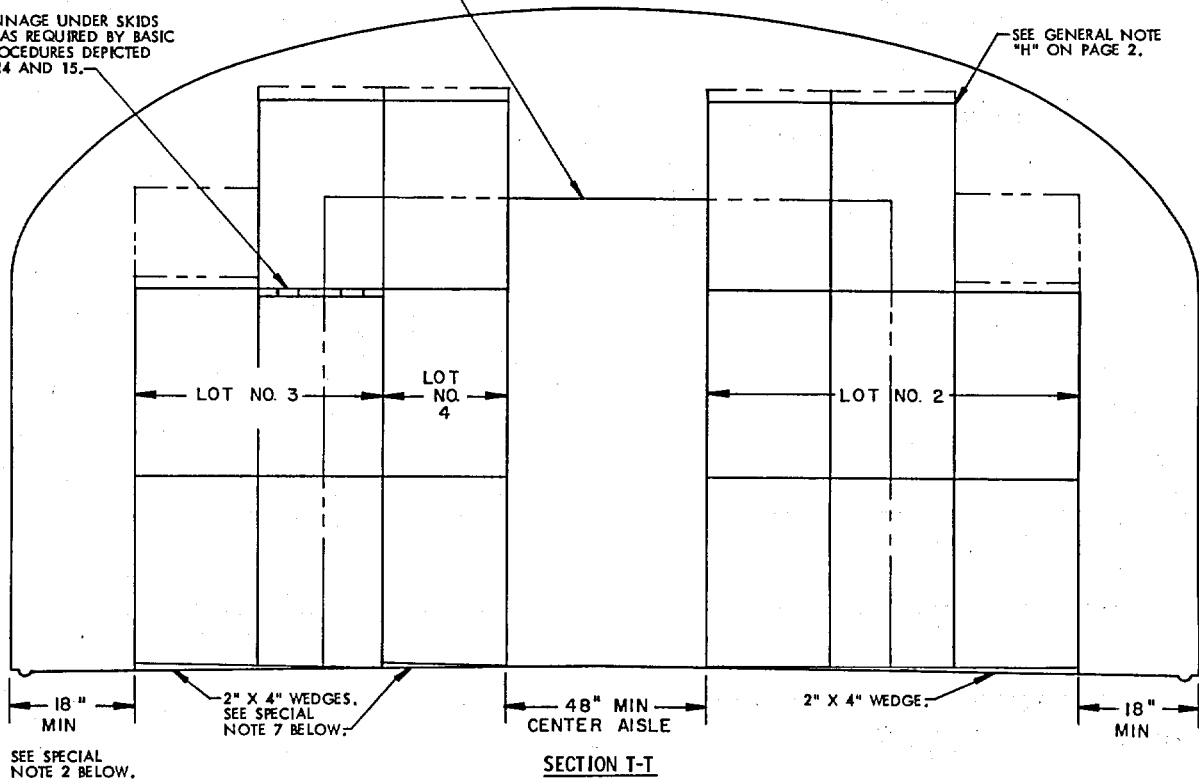
7. LENGTH OF 2" X 4" WEDGES WILL BE DETERMINED BY THE WIDTH OF THE LOT IN ROWS. WEDGES WILL NOT EXTEND INTO AISLE OR UNDER ADJACENT LOTS.
8. WHEN TWO LOTS ARE STORED ADJACENT TO EACH OTHER, THEY SHOULD BE SEPARATED BY AT LEAST 1" TO PROVIDE CLEARANCE FOR REMOVAL OF EITHER LOT.
9. AREAS ENCLOSED BY DOTTED LINES INDICATE LOCATIONS WHERE ADDITIONAL LOTS MAY BE STORED OR WHERE ADDITIONAL ITEMS MAY BE STORED, THAT ARE FROM THE LOT OR LOTS WHICH ARE DIRECTLY OR ALMOST DIRECTLY ACROSS THE CENTER AISLE ON THE OTHER SIDE OF THE MAGAZINE. COMPLIANCE WITH ALL OF THE MULTIPLE-LOT CRITERIA AS SET FORTH ON THIS PAGE MUST BE OBSERVED. THE SIZE OF THE LOTS BEING STORED AND THE CRITERIA OF SPECIAL NOTE 4, RELATIVE TO "12 LIFTS", WILL BE MAJOR FACTORS IMPACTING ON THE NUMBER OF UNIT LOADS THAT CAN BE STORED IN AN "ADDITIONAL STORAGE LOCATION". MORE OR FEWER STACKS THAN SHOWN MAY BE STORED AT ANY ONE OF THE ADDITIONAL STORAGE LOCATIONS. AN 11-FOOT MHE OPERATING AREA HAS BEEN SPECIFIED FOR ACCESS TO EACH "ADDITIONAL LOCATION" BY FORKLIFT TRUCK. THIS OPERATING AREA IS BASED ON REQUIREMENTS OF FORKLIFT TRUCKS COMMONLY USED IN STORAGE MAGAZINES. THE MHE OPERATING AREA CAN BE ENLARGED AS REQUIRED TO SUIT AVAILABLE FORKLIFT TRUCKS, AND SHOULD BE MADE SMALLER IF AVAILABLE MHE PERMITS. A "CENTER AISLE" (SPACE BETWEEN STORAGE ON ONE SIDE OF A MAGAZINE AND AN "ADDITIONAL STORAGE LOCATION") IS TO BE AT LEAST 48 INCHES WIDE. AN AISLE SLIGHTLY WIDER THAN 48 INCHES WILL ENHANCE FORKLIFT TRUCK MOVEMENT WITHIN A MAGAZINE; HOWEVER, THIS AISLE SHOULD NOT BE MADE WIDER IF A LOSS IN STORAGE RESULTS.



2" X 4" DUNNAGE UNDER SKIDS OF PALLETS AS REQUIRED BY BASIC STORAGE PROCEDURES DEPICTED ON PAGES 14 AND 15.

INDICATES OUTLINE OF DOOR OPENING.

SEE GENERAL NOTE "H" ON PAGE 2.



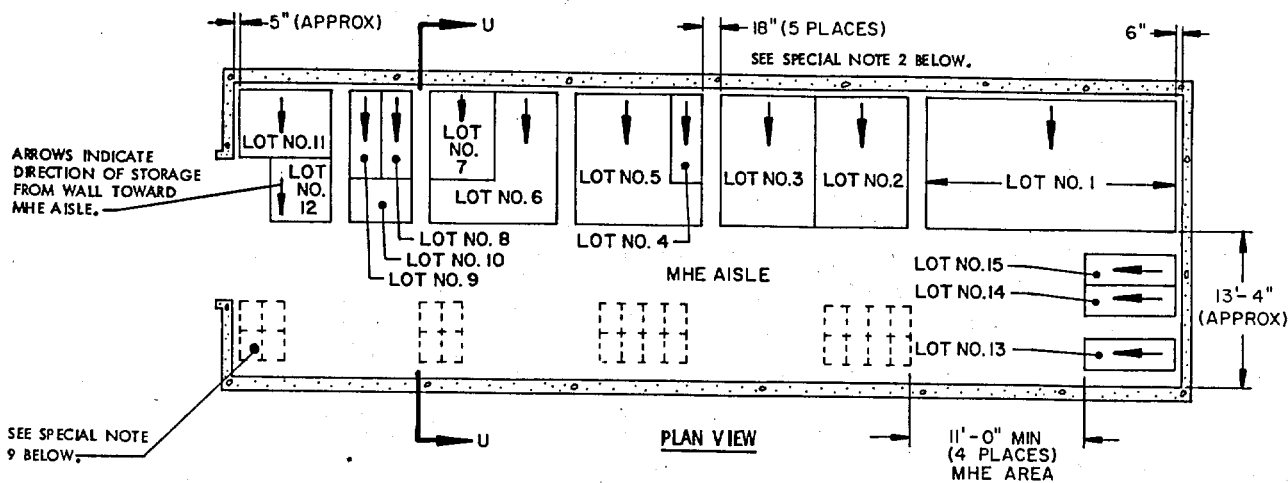
SPECIAL NOTES:

1. THE STORAGE PLANS AND CONFIGURATIONS SHOWN ON THIS PAGE ARE TYPICAL AND APPLY TO RELATIVELY LARGE LOTS. ADAPTATIONS MAY BE MADE AS NUMBER AND SIZES OF LOTS TO BE STORED IN MAGAZINE REQUIRE.
2. AN INSPECTION/INVENTORY AISLE MUST BE PROVIDED AT ONE SIDE OR END OF EACH LOT.
3. GENERALLY, THE LARGEST LOT SHOULD BE STORED IN THE REAR OF THE MAGAZINE. HOWEVER, THE REAR AREA MAY BE USED TO STORE MORE THAN ONE LOT BY ERECTING ROWS SIMILAR TO THOSE SHOWN IN THE FRONTAL AREA. A CENTER AISLE WILL NOT BE REQUIRED IN THE REAR AREA AS LONG AS EACH LOT IS ACCESSIBLE FOR REMOVAL AND INSPECTION/INVENTORY IN ACCORDANCE WITH OTHER CRITERIA SPECIFIED IN THESE SPECIAL NOTES AND IN THE GENERAL NOTES ON PAGE 2.
4. EACH LOT WITHIN THE MAGAZINE MUST BE ACCESSIBLE FOR MOVEMENT BY MHE. A SINGLE-LOT OF PALLET UNITS IS CONSIDERED "ACCESSIBLE" IF NO MORE THAN TWELVE (12) "LIFTS" OF ANOTHER LOT OR LOTS HAVE TO BE MADE TO GAIN ACCESS TO THAT LOT. THE TERM "LIFT" MEANS HANDLING AND MOVING NOT MORE THAN TWO (2) PALLET UNITS OF PROJECTILES AT ONE TIME.
5. FOR STORAGE OF MULTIPLE LOTS, THE DISTANCE FROM THE SIDEWALL WILL BE BASED ON THE OVERHEAD CLEARANCE REQUIRED FOR MHE.
6. EACH LOT MUST BE STORED TWO (2) UNITS (MINIMUM) WIDE TO ACCOMMODATE WIDTH OF MHE DURING OPERATIONS, EXCEPT FOR A ROW ADJACENT TO A CENTER AISLE.

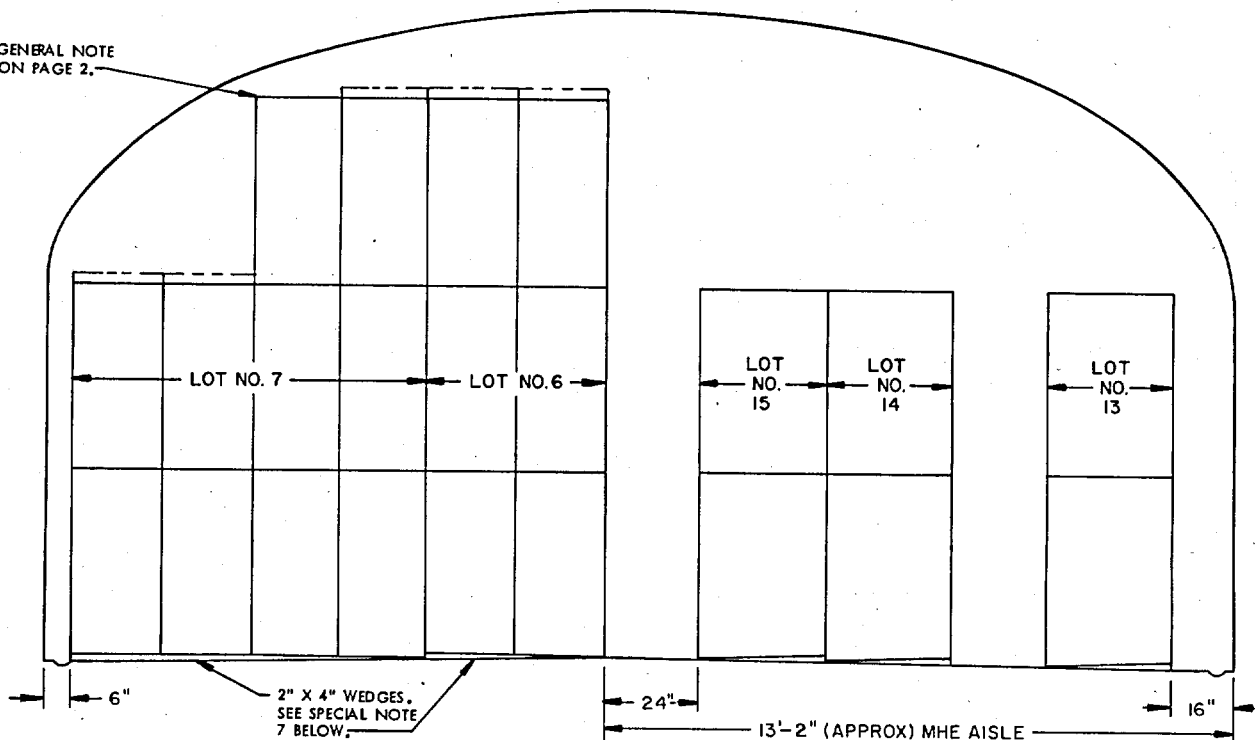
(CONTINUED AT RIGHT)

(SPECIAL NOTES CONTINUED)

7. LENGTH OF 2" X 4" WEDGES WILL BE DETERMINED BY THE WIDTH OF THE LOT IN ROWS. WEDGES WILL NOT EXTEND INTO AISLES OR UNDER ADJACENT LOTS.
8. WHEN TWO LOTS ARE STORED ADJACENT TO EACH OTHER, THEY SHOULD BE SEPARATED BY AT LEAST 1" TO PROVIDE CLEARANCE FOR REMOVAL OF EITHER LOT.



SEE GENERAL NOTE "H" ON PAGE 2.



SECTION U-U

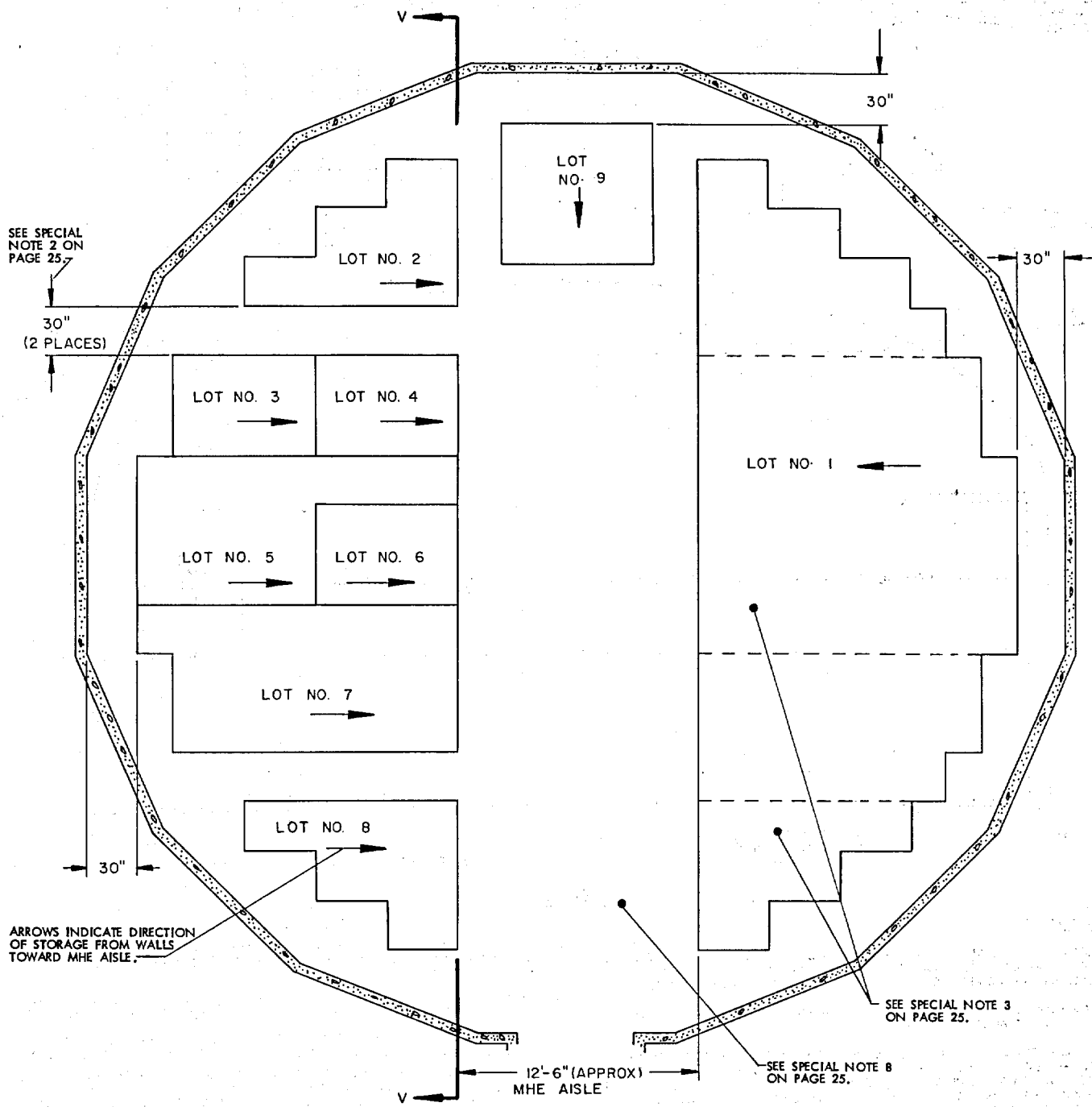
(SPECIAL NOTES CONTINUED)

SPECIAL NOTES:

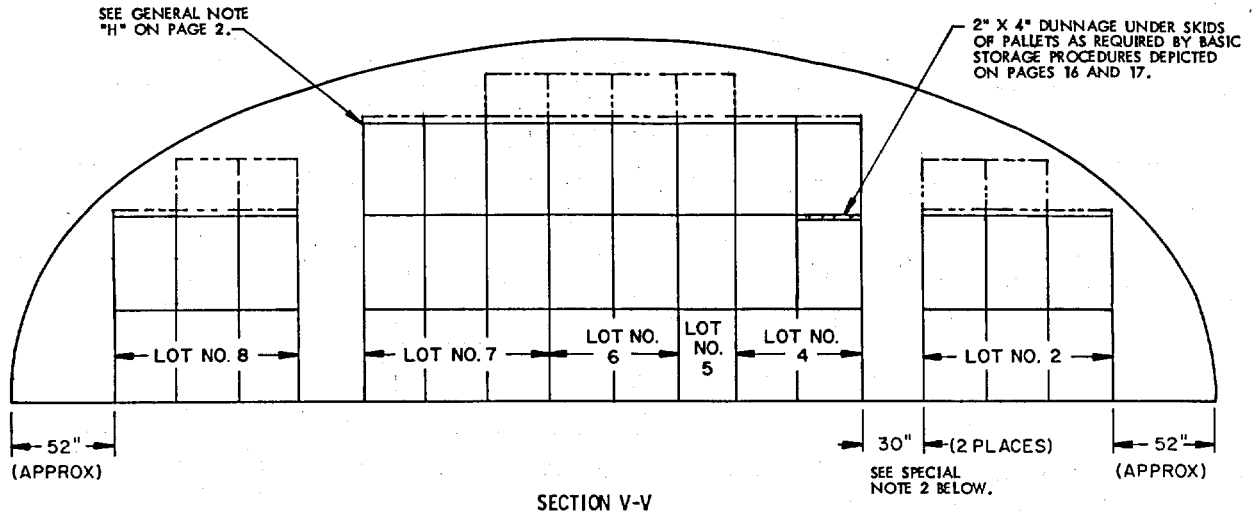
1. THE STORAGE PLANS AND CONFIGURATIONS SHOWN ON THIS PAGE ARE TYPICAL ONLY AND APPLY TO STORAGE OF NUMEROUS SMALL LOTS. ADAPTATIONS MAY BE MADE AS NUMBER AND SIZES OF LOTS TO BE STORED IN MAGAZINE REQUIRE.
2. AN INSPECTION/INVENTORY AISLE NOT LESS THAN 18" WIDE MUST BE PROVIDED AT ONE SIDE OF EACH "BURIED" LOT.
3. GENERALLY, THE LARGEST LOT SHOULD BE STORED IN THE REAR OF THE MAGAZINE. HOWEVER, THE REAR AREA MAY BE USED TO STORE MORE THAN ONE LOT BY ERECTING STACKS SIMILAR TO THOSE SHOWN IN THE FRONTAL AREA. AN MHE AISLE WILL BE REQUIRED ON ONE SIDE OF THE MAGAZINE, AND EACH LOT MUST BE ACCESSIBLE FOR REMOVAL AND INSPECTION/INVENTORY IN ACCORDANCE WITH OTHER CRITERIA SPECIFIED IN THESE SPECIAL NOTES AND IN THE GENERAL NOTES ON PAGE 2.
4. EACH LOT WITHIN THE MAGAZINE MUST BE ACCESSIBLE FOR MOVEMENT BY MHE. A SINGLE-LOT OF PALLET UNITS IS CONSIDERED "ACCESSIBLE" IF NO MORE THAN TWELVE (12) "LIFTS" OF ANOTHER LOT OR LOTS HAVE TO BE MADE TO GAIN ACCESS TO THAT LOT. THE TERM "LIFT" MEANS HANDLING AND MOVING NOT MORE THAN TWO (2) PALLET UNITS OF PROJECTILES AT ONE TIME.
5. FOR STORAGE OF MULTIPLE LOTS, THE DISTANCE FROM THE SIDEWALL WILL BE BASED ON THE OVERHEAD CLEARANCE REQUIRED FOR MHE.

(CONTINUED AT RIGHT)

6. EACH LOT MUST BE STORED TWO (2) UNITS (MINIMUM) WIDE TO ACCOMMODATE WIDTH OF MHE DURING OPERATIONS, EXCEPT FOR A ROW ADJACENT TO AN INSPECTION/INVENTORY AISLE.
7. LENGTH OF 2" X 4" WEDGES WILL BE DETERMINED BY THE WIDTH OF THE LOT IN ROWS. WEDGES WILL NOT EXTEND INTO AISLE OR UNDER ADJACENT LOTS.
8. WHEN TWO LOTS ARE STORED ADJACENT TO EACH OTHER, THEY SHOULD BE SEPARATED BY AT LEAST 1" TO PROVIDE CLEARANCE FOR REMOVAL OF EITHER LOT.
9. AREAS ENCLOSED BY DOTTED LINES INDICATE LOCATIONS WHERE ADDITIONAL LOTS MAY BE STORED OR WHERE ADDITIONAL ITEMS MAY BE STORED, THAT ARE FROM THE LOT OR LOTS WHICH ARE DIRECTLY OR ALMOST DIRECTLY ACROSS THE CENTER AISLE ON THE OTHER SIDE OF THE MAGAZINE. COMPLIANCE WITH ALL OF THE MULTIPLE-LOT CRITERIA AS SET FORTH ON THIS PAGE MUST BE OBSERVED. THE SIZE OF THE LOTS BEING STORED AND THE CRITERIA OF SPECIAL NOTE 4, RELATIVE TO "12 LIFTS", WILL BE MAJOR FACTORS IMPACTING ON THE NUMBER OF UNIT LOADS THAT CAN BE STORED IN AN "ADDITIONAL STORAGE LOCATION". MORE OR FEWER STACKS THAN SHOWN MAY BE STORED AT ANY ONE OF THE ADDITIONAL STORAGE LOCATIONS. AN 11-FOOT MHE OPERATING AREA HAS BEEN SPECIFIED FOR ACCESS TO EACH "ADDITIONAL LOCATION" BY FORKLIFT TRUCK. THIS OPERATING AREA IS BASED ON REQUIREMENTS OF FORKLIFT TRUCKS COMMONLY USED IN STORAGE MAGAZINES. THE MHE OPERATING AREA CAN BE ENLARGED AS REQUIRED TO SUIT AVAILABLE FORKLIFT TRUCKS, AND SHOULD BE MADE SMALLER IF AVAILABLE MHE PERMITS. A "CENTER AISLE" (SPACE BETWEEN STORAGE ON ONE SIDE OF A MAGAZINE AND AN "ADDITIONAL STORAGE LOCATION") IS TO BE AT LEAST 48 INCHES WIDE. AN AISLE SLIGHTLY WIDER THAN 48 INCHES WILL ENHANCE FORKLIFT TRUCK MOVEMENT WITHIN A MAGAZINE; HOWEVER, THIS AISLE SHOULD NOT BE MADE WIDER IF A LOSS IN STORAGE RESULTS.



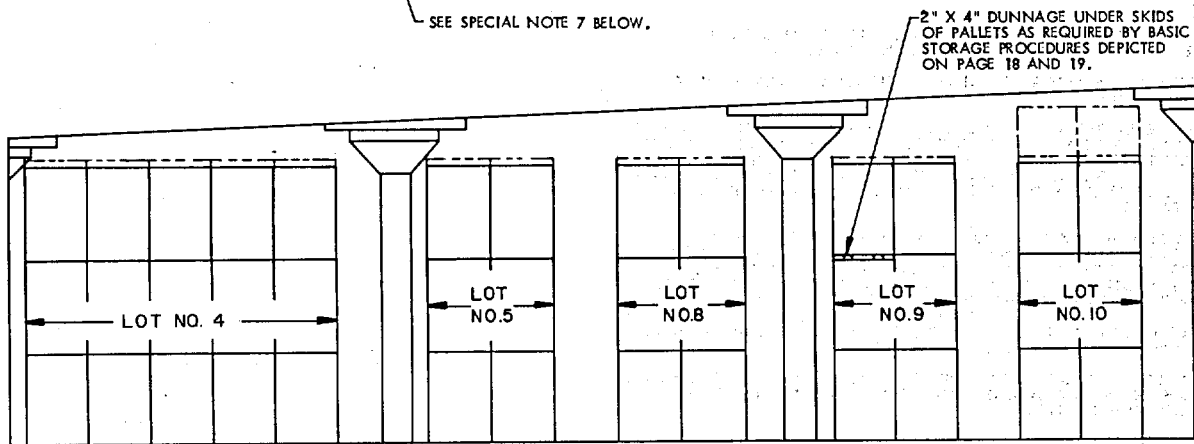
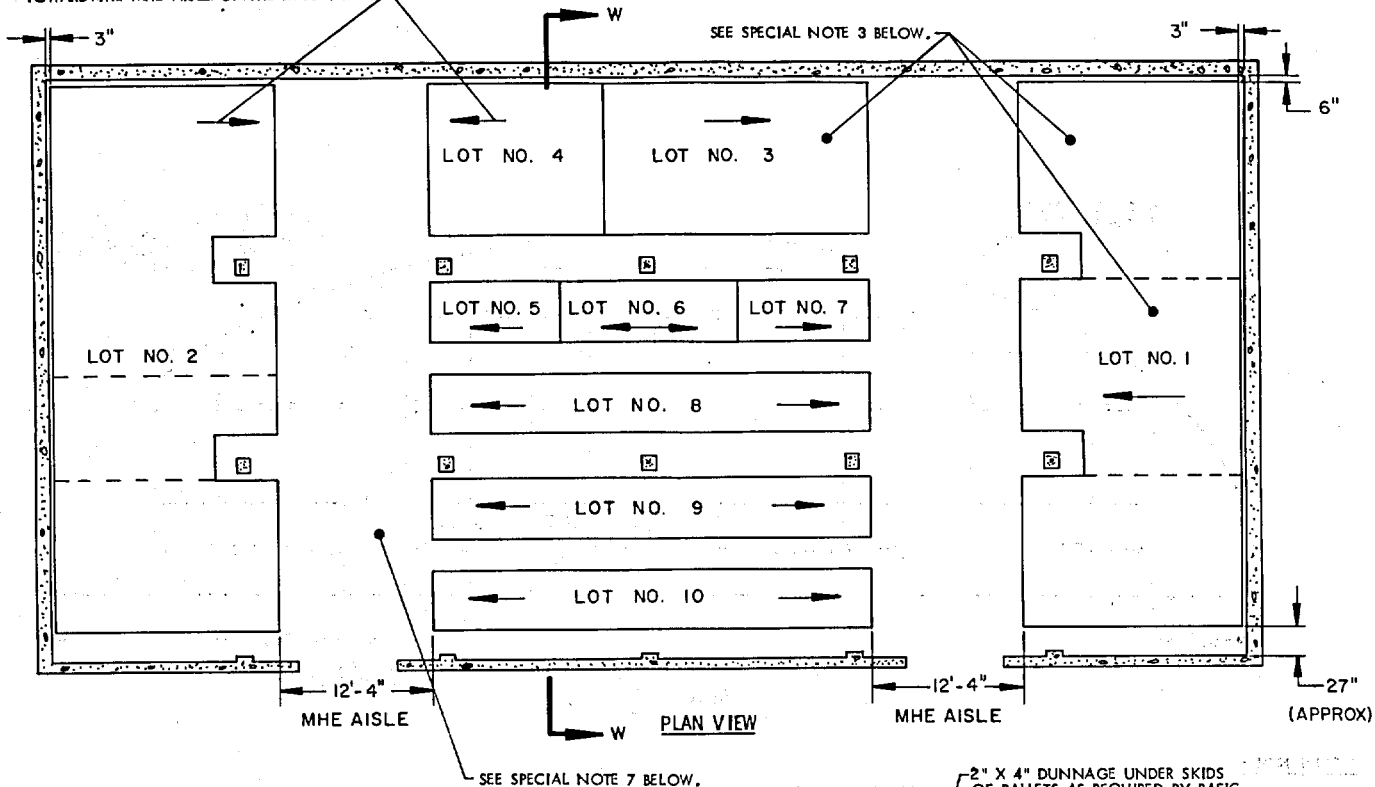
PLAN VIEW



SPECIAL NOTES:

1. THE STORAGE PLANS SHOWN ARE TYPICAL ONLY. ADAPTATIONS MAY BE MADE AS NUMBER AND SIZES OF LOTS TO BE STORED IN MAGAZINE REQUIRE.
2. AN INSPECTION/INVENTORY AISLE NOT LESS THAN 18" WIDE MUST BE PROVIDED AT ONE SIDE OF EACH "BURIED" LOT.
3. GENERALLY, THE LARGEST LOT SHOULD BE STORED ON ONE SIDE OF THE MAGAZINE. HOWEVER, BOTH SIDES MAY BE USED TO STORE MORE THAN ONE LOT BY ERECTING ROWS SIMILAR TO THOSE SHOWN ON THE LEFT SIDE. EACH ADDITIONAL LOT MUST BE ACCESSIBLE FOR REMOVAL AND INSPECTION/INVENTORY IN ACCORDANCE WITH OTHER CRITERIA SPECIFIED IN THESE SPECIAL NOTES AND IN THE GENERAL NOTES ON PAGE 2.
4. EACH LOT WITHIN THE MAGAZINE MUST BE ACCESSIBLE FOR MOVEMENT BY MHE. A SINGLE-LOT OF PALLET UNITS IS CONSIDERED "ACCESSIBLE" IF NO MORE THAN TWELVE (12) "LIFTS" OF ANOTHER LOT OR LOTS HAVE TO BE MADE TO GAIN ACCESS TO THAT LOT. THE TERM "LIFT" MEANS HANDLING AND MOVING NOT MORE THAN TWO (2) PALLET UNITS OF PROJECTILES AT ONE TIME.
5. FOR STORAGE OF MULTIPLE LOTS, THE DISTANCE FROM THE WALL WILL BE BASED ON THE OVERHEAD CLEARANCE REQUIRED FOR MHE.
6. EACH LOT MUST BE STORED TWO (2) UNITS (MINIMUM) WIDE TO ACCOMMODATE WIDTH OF MHE DURING OPERATIONS, EXCEPT FOR A ROW ADJACENT TO AN INSPECTION/INVENTORY AISLE.
7. WHEN TWO LOTS ARE STORED ADJACENT TO EACH OTHER, THEY SHOULD BE SEPARATED BY AT LEAST 1" TO PROVIDE CLEARANCE FOR REMOVAL OF EITHER LOT.
8. THE MHE AISLE MAY BE USED TO STORE ONE OR MORE STACKS OF ADDITIONAL LOTS OR ADDITIONAL ITEMS THAT ARE FROM A LOT ADJACENT TO THE MHE AISLE. THIS ADDITIONAL STORAGE IS TO BE ARRANGED IN A MANNER SIMILAR TO ARRANGEMENTS DEPICTED ON PAGES 21 AND 23 FOR THE "ADDITIONAL STORAGE LOCATIONS" (SHOWN BY DOTTED LINES). ADEQUATE SPACE FOR MHE OPERATION, AS DESCRIBED ON PAGES 21 AND 23, MUST BE MADE AVAILABLE FOR THE ADDITIONAL STORAGE. ALSO, COMPLIANCE WITH ALL OF THE MULTIPLE-LOT CRITERIA AS SET FORTH ON THIS PAGE MUST BE OBSERVED.

ARROWS INDICATE DIRECTION OF STORAGE FROM SIDEWALLS AND/OR CENTER AREA TOWARD THE MHE AISLE OF THE MAGAZINE.



SECTION W-W

(APPROX)
SEE SPECIAL NOTE 2 BELOW.

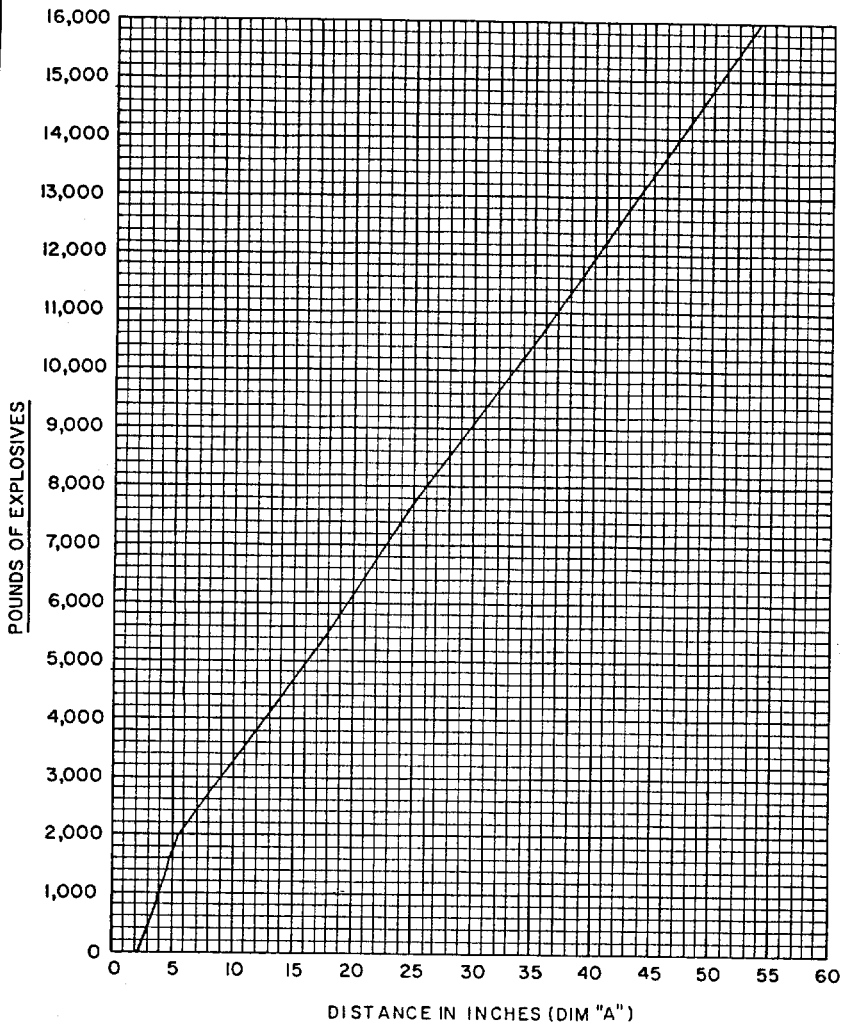
SPECIAL NOTES:

1. THE STORAGE PLANS SHOWN ARE TYPICAL ONLY. ADAPTATIONS MAY BE MADE AS NUMBER AND SIZES OF LOTS TO BE STORED IN MAGAZINE REQUIRE.
2. AN INSPECTION/INVENTORY AISLE NOT LESS THAN 18" WIDE MUST BE PROVIDED AT ONE SIDE OF EACH "BURIED" LOT.
3. GENERALLY, THE LARGEST LOT SHOULD BE STORED IN THE REAR OR ON ONE SIDE OF THE MAGAZINE. HOWEVER, THESE AREAS MAY BE USED TO STORE MORE THAN ONE LOT BY ERECTING ROWS SIMILAR TO THOSE SHOWN IN THE CENTER AREA OR AS TYPICALLY INDICATED BY DOTTED LINES. EACH ADDITIONAL LOT MUST BE ACCESSIBLE FOR REMOVAL AND INSPECTION/INVENTORY IN ACCORDANCE WITH OTHER CRITERIA SPECIFIED IN THESE SPECIAL NOTES AND IN THE GENERAL NOTES ON PAGE 2.
4. EACH LOT WITHIN THE MAGAZINE MUST BE ACCESSIBLE FOR MOVEMENT BY MHE. A SINGLE-LOT OF PALLET UNITS IS CONSIDERED "ACCESSIBLE" IF NO MORE THAN TWENTY-FOUR (24) "LIFTS" OF ANOTHER LOT OR LOTS HAVE TO BE MADE TO GAIN ACCESS TO THAT LOT. THE TERM "LIFT" MEANS HANDLING AND MOVING NOT MORE THAN TWO (2) PALLET UNITS OF PROJECTILES AT ONE TIME.
5. WHEN TWO LOTS ARE STORED ADJACENT TO EACH OTHER, THEY SHOULD BE SEPARATED BY AT LEAST 1" TO PROVIDE CLEARANCE FOR REMOVAL OF EITHER LOT.

(CONTINUED AT RIGHT)

(SPECIAL NOTES CONTINUED)

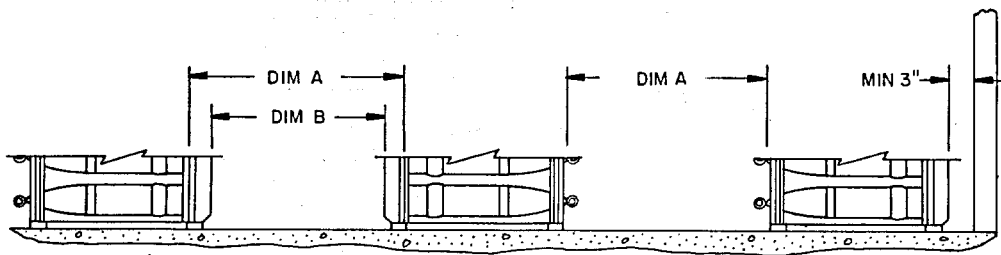
6. EACH LOT MUST BE STORED TWO (2) UNITS (MINIMUM) WIDE TO ACCOMMODATE WIDTH OF MHE DURING OPERATIONS, EXCEPT FOR A ROW ADJACENT TO AN INSPECTION/INVENTORY AISLE.
7. THE MHE AISLE MAY BE USED TO STORE ONE OR MORE STACKS OF ADDITIONAL LOTS OR ADDITIONAL ITEMS THAT ARE FROM A LOT ADJACENT TO THE MHE AISLE. THIS ADDITIONAL STORAGE IS TO BE ARRANGED IN A MANNER SIMILAR TO ARRANGEMENTS DEPICTED ON PAGES 21 AND 23 FOR THE "ADDITIONAL STORAGE LOCATIONS" (SHOWN BY DOTTED LINES). ADEQUATE SPACE FOR MHE OPERATION, AS DESCRIBED ON PAGES 21 AND 23, MUST BE MADE AVAILABLE FOR THE ADDITIONAL STORAGE. ALSO, COMPLIANCE WITH ALL OF THE MULTIPLE-LOT CRITERIA AS SET FORTH ON THIS PAGE MUST BE OBSERVED.



DISTANCE CURVE

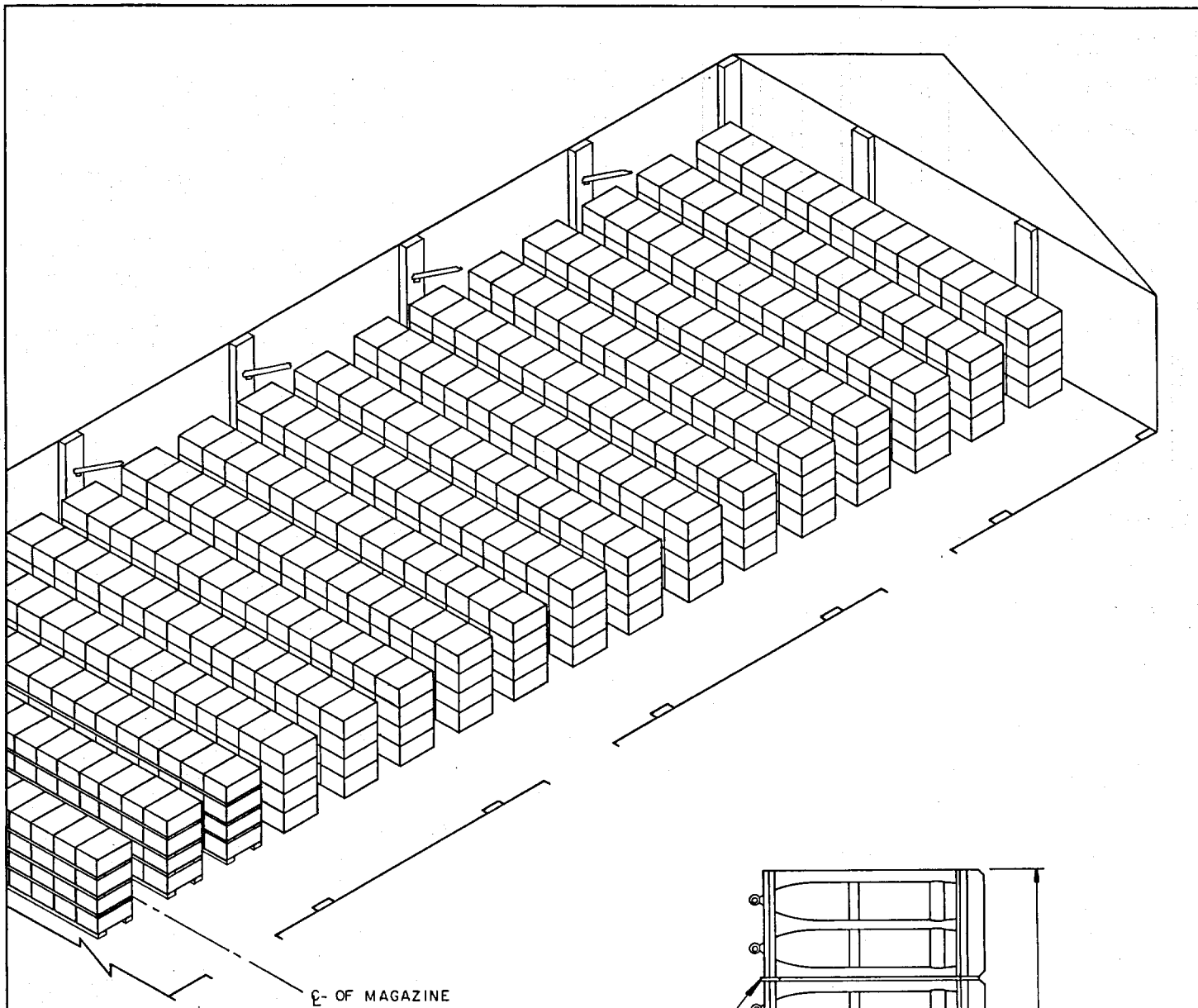
SPECIAL NOTES:

1. THE DEPICTED "DISTANCE CURVE" AND THE "METHOD OF MEASURING NOSE TO NOSE AND BASE TO BASE DISTANCE" ARE REQUIRED TO BE USED FOR THE STORAGE OF PROJECTILE PALLET UNITS IN STANDARD ABOVE-GROUND MAGAZINES AS FURTHER DELINEATED ON PAGES 28 AND 29.
2. ALL SEPARATE LOADING PROJECTILES WILL BE STORED NOSE TO NOSE AND BASE TO BASE THROUGHOUT THE MAGAZINE. FOR SPECIAL HANDLING EQUIPMENT REQUIRED, SEE GENERAL NOTE "K" ON PAGE 2.
3. THE DISTANCE CURVE DESIGNATES THE AISLE SPACING (DIM A BELOW) TO BE PROVIDED BETWEEN STACKS OF PROJECTILES. SIZE OF AISLE IS DETERMINED BY THE POUNDS OF EXPLOSIVE CONTAINED WITHIN A STACK. NOSE TO NOSE AND BASE TO BASE DIMENSIONS MUST NOT BE DECREASED UNDER ANY CONDITIONS.
4. CATEGORY (18) CLASS 1.2 AMMUNITION STORED IN ABOVE-GROUND MAGAZINES WILL BE PLACED IN STACKS OF NOT MORE THAN 15,000 POUNDS OF EXPLOSIVE EACH.
5. NOTE: STORAGE OF SOME SPECIFIC TYPES OF SEPARATE LOADING PROJECTILES MUST ALSO COMPLY WITH DIRECTIVES AND REGULATORY REQUIREMENTS OTHER THAN AS SPECIFIED HEREIN.
6. NOSE TO NOSE AND BASE TO BASE QUANTITY DISTANCE CURVE SHOWN IS BASED ON ABERDEEN TESTS, AND IS DESIGNED TO LIMIT EXPLOSIONS TO ONE STACK IF PROJECTILES ARE STACKED ALLOWING AISLE SPACING AS SHOWN ON CURVE.
7. MULTIPLE LOTS OF ITEMS MAY BE STORED IN A MAGAZINE. ALSO, MORE THAN ONE LOT OF ITEMS MAY BE STORED WITHIN A STACK; HOWEVER, ITEMS OF ONE LOT WILL NOT BE STACKED ON TOP OF ITEMS FROM ANOTHER LOT. ADDITIONALLY, AN MHE OPERATING AISLE MUST BE PROVIDED, AS REQUIRED, TO PERMIT ACCESS TO ANY LOT. LOTS SHOULD BE SEPARATED BY A 3" MINIMUM SPACE. DUNNAGE MATERIAL USED FOR ONE LOT WILL NOT EXTEND UNDER ITEMS OF AN ADJACENT LOT.
8. PALLET UNITS WILL NOT BE STACKED MORE THAN FOUR (4) UNITS HIGH WHEN PROJECTILES ARE IN THE HORIZONTAL POSITION.



METHOD OF MEASURING NOSE TO NOSE & BASE TO BASE DISTANCE

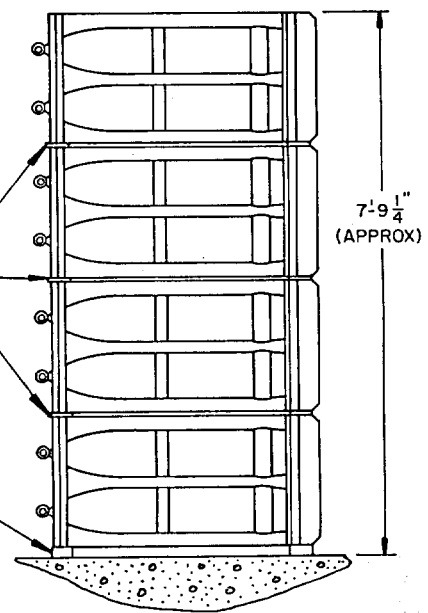
DIM A WILL BE THE DISTANCE IN INCHES AS DETERMINED FROM THE DISTANCE CURVE SHOWN ABOVE. SEE SPECIAL NOTE 3 ABOVE. DIM B EQUALS DIM A MINUS 10", BASED ON PALLET UNITS HAVING 3-5/8" HIGH SKIDS AND 1-3/8" THICK STRINGERS.



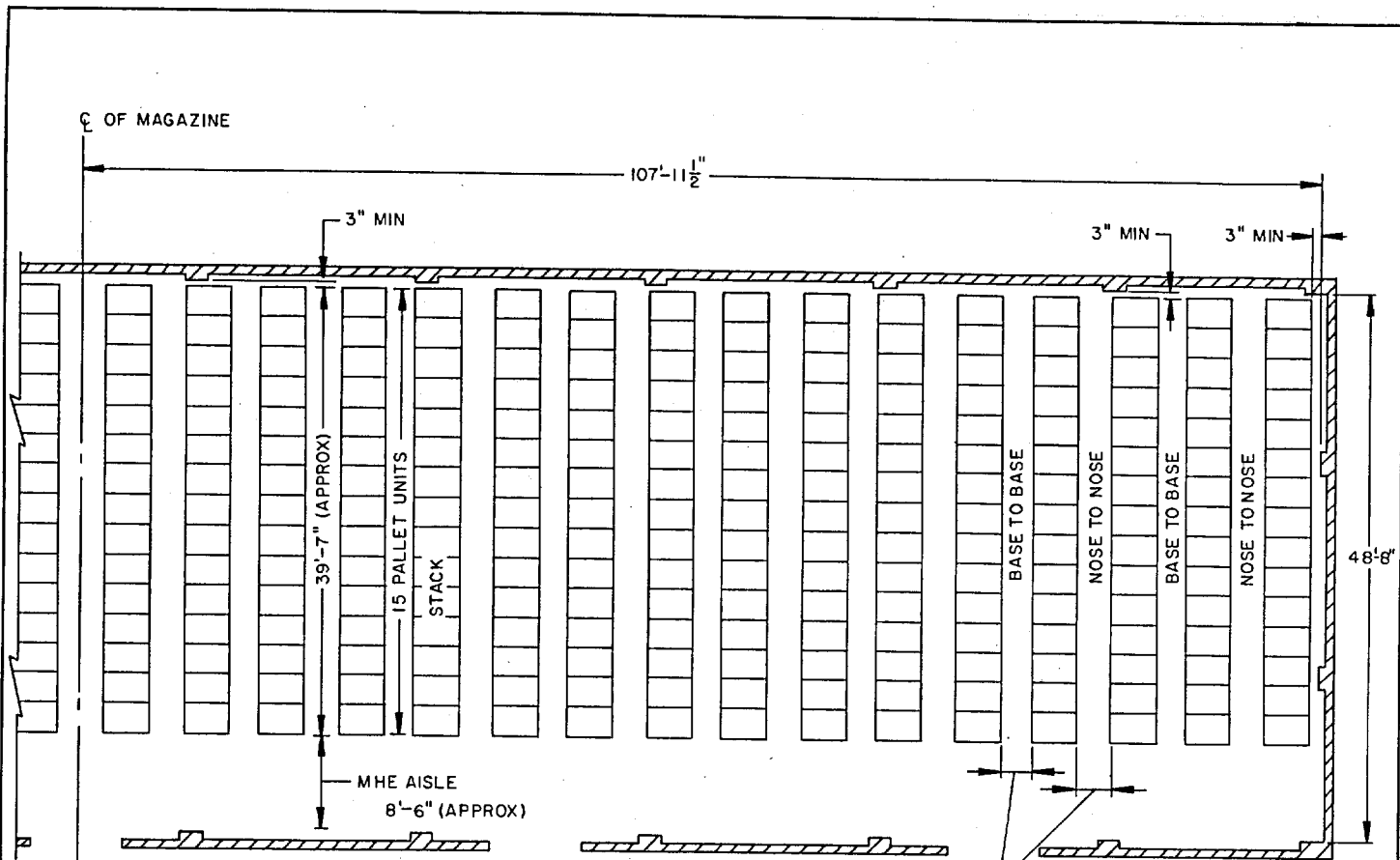
ISOMETRIC VIEW
ONE-HALF OF A STANDARD MAGAZINE SHOWN.

1" X 4" MATERIAL.

2" X 4" MATERIAL,
RANDOM LENGTHS.



END VIEW OF STACK
SEE GENERAL NOTE "K" ON PAGE 2.



PLAN VIEW

ONE-HALF OF A STANDARD MAGAZINE SHOWN.

FOR NOSE TO NOSE AND BASE TO BASE DISTANCE REQUIREMENTS, SEE PAGE 27.

FOR "GENERAL NOTES" AND "MATERIAL SPECIFICATIONS", SEE PAGE 2.

STORAGE AS SHOWN

ONE-HALF OF STANDARD MAGAZINE

ITEM	QUANTITY
PALLET UNITS (60/STACK) -----	960
PROJECTILES (6/PALLET) -----	5,760

SPECIAL NOTES:

1. RANDOM LENGTHS MAY BE USED FOR FLOOR AND INTERMEDIATE DUNNAGE. HOWEVER, FOR THE INTERMEDIATE DUNNAGE, 60" LONG PIECES WILL ENHANCE STORAGE OPERATIONS. **CAUTION:** BASED ON HANDLING TWO PALLET PER LIFT, NOT MORE THAN TWO PIECES CAN BE USED TO MAKE A 60" LONG PIECE, AND THESE PIECES CANNOT BE OF EQUAL LENGTH (30"). THE SHORTEST OF THE TWO PIECES CAN RANGE IN LENGTH FROM 20" TO 28". IF TWO RANDOM LENGTH PIECES ARE USED TO FORM BOTH 60" LONG PIECES OF INTERMEDIATE DUNNAGE UNDER ONE "SET" OF TWO PALLET, THE JOINTS WITHIN THESE PIECES ARE TO BE STAGGERED.
2. THE STORAGE AS SHOWN IS BASED ON HANDLING TWO PALLET UNITS PER LIFT. STORAGE CAN BE ACCOMPLISHED BY HANDLING ONE PALLET UNIT PER LIFT, HOWEVER, DUE TO STACK STABILITY REQUIREMENTS, RANDOM LENGTH INTERMEDIATE DUNNAGE IS NOT PERMITTED AND THE MINIMUM LENGTH FOR INTERMEDIATE DUNNAGE PIECES IS 30" (APPROXIMATELY EQUAL TO DIMENSION OF ONE PALLET UNIT).

BILL OF MATERIAL (PER STACK)

LUMBER	* LINEAR FEET	BOARD FEET
1" X 4"	156.00	52.00
2" X 4"	78.00	52.00

* RANDOM LENGTHS MAY BE USED. SEE SPECIAL NOTES ON THIS PAGE FOR ADDITIONAL GUIDANCE.

