

STORAGE IN APPROVED MAGAZINES OF 8" SEPARATE LOADING PROJECTILES, UNITIZED 6 ROUNDS PER 19-1/2" L X 28-1/2" W X 48-1/2" H PALLET UNIT

<u>ITEM</u>	<u>INDEX</u>	<u>PAGE(S)</u>
GENERAL NOTES -----		2
PALLET UNIT DETAIL -----		3
STORAGE PROCEDURES (EARTH COVERED MAGAZINES):		
81'-0", 60'-8" AND 40'-4" L X 26'-6" W X 12'-9" H IGL00 MAGAZINES -----		4,5
81'-2" L X 26'-6" W X 12'-1-3/4" H ARCH TYPE MAGAZINE (IGL00) -----		6,7
80'-0" AND 40'-0" L X 25'-0" W X 12'-1-3/4" H ARCH TYPE MAGAZINES (IGL00) -----		8,9
80'-0" AND 40'-0" L X 25'-0" W X 11'-0" H ARCH TYPE MAGAZINES (IGL00) -----		10,11
80'-0" AND 40'-0" L X 25'-0" W X 10'-0" H ARCH TYPE MAGAZINES (IGL00) -----		12,13
89'-0" L X 24'-11" W X 13'-6" H STEEL ARCH MAGAZINE -----		14,15
80'-0" L X 25'-0" W X 14'-0" STRADLEY AND 89'-0" L X 24'-0" W X 14'-4" H OVAL ARCH MAGAZINES -----		16,17
52'-0" DIA CORBETTA MAGAZINE -----		18,19
100'-8" L X 50'-0" W RECTANGULAR MAGAZINE -----		20,21
TYPICAL MULTIPLE-LOT STORAGE PROCEDURES:		
IGL00 AND ARCH TYPE MAGAZINES -----		22,23
STRADLEY AND OVAL ARCH TYPE MAGAZINES -----		24,25
CORBETTA MAGAZINE -----		26,27
RECTANGULAR MAGAZINE -----		28
STORAGE PROCEDURES (STANDARD ABOVE GROUND MAGAZINES):		
METHOD OF MEASURING STACK SPACING -----		29
217'-0" L X 50'-0" W STANDARD MAGAZINE -----		30,31

DO NOT SCALE

REVISIONS		DRAFTSMAN	TYPYST	CHECKER	TECHNICIAN	ENGINEER
		<i>TM</i>	<i>TM</i>	<i>R. Arnold</i>		
DEV						
DEO						
DE						
DEV						
DEO						
DE						
DEV						
DEO						
DE						
APPROVED BY ORDER OF COMMANDING GENERAL, U.S. ARMY MATERIEL COMMAND (AMC) <i>William F. Ernst</i> U.S. ARMY DEFENSE AMMUNITION CENTER AND SCHOOL						
U.S. ARMY MATERIEL COMMAND						
JANUARY 1992						
		CLASS	DIVISION	DRAWING	FILE	
DEV		19	48	4102/23	1-2-3-4-14	
DEO					22 PE 1001	
DE						

GENERAL NOTES

- A. THIS DOCUMENT HAS BEEN PREPARED AND ISSUED IN ACCORDANCE WITH AR 740-1, AND AUGMENTS TM 743-200-1 (CHAPTER 5).
- B. THE STORAGE PROCEDURES DEPICTED WITHIN THIS DOCUMENT ARE APPLICABLE FOR STORAGE IN VARIOUS TYPES AND SIZES OF MAGAZINES. THE STORAGE PROCEDURES DEPICTED FOR THE SPECIFIC TYPES OF MAGAZINES MAY ALSO BE UTILIZED TO STORE PROJECTILE PALLET UNITS IN OTHER TYPES OF APPROVED MAGAZINES. MINOR ADJUSTMENTS MAY BE MADE TO FACILITATE STORAGE IN OTHER TYPES OF MAGAZINES, HOWEVER, THE BASIC PRINCIPLES AS DEPICTED HEREIN WILL BE FOLLOWED.
- C. CAUTION: THE ALLOWABLE "EXPLOSIVE LIMIT" ESTABLISHED FOR A MAGAZINE IS NOT TO BE EXCEEDED. STORAGE OF SOME SPECIFIC TYPES OF SEPARATE LOADING PROJECTILES MUST ALSO COMPLY WITH CURRENT DIRECTIVES AND OTHER REGULATORY REQUIREMENTS, IN ADDITION TO THOSE SPECIFIED IN THIS DRAWING.
- D. TWO (2) PALLET UNITS CAN BE HANDLED BY A FORKLIFT TRUCK AS ONE LOAD, IF THE LENGTH OF THE FORK TINES IS ADEQUATE TO PROVIDE FULL-LENGTH OR NEARLY FULL-LENGTH BEARING UNDER THE LOAD BEING HANDLED. OTHER APPLICABLE SAFETY CONTROLS (DIRECTIVES, REGULATIONS, ETC) MUST BE OBSERVED. SEE GENERAL NOTE "G".
- E. DUNNAGE PIECES INDICATED HEREIN BETWEEN LAYERS OF PALLET UNITS ARE SPECIFIED AS 2" X 4" MATERIAL. IF THE THICKNESS OF THE FORK TINES OF THE FORKLIFT TRUCK DOES NOT REQUIRE THAT MUCH CLEARANCE FOR SAFE PLACEMENT OR REMOVAL OF UPPER LAYER PALLET UNITS, 1" X 4" MATERIAL MAY BE USED IN LIEU OF THE 2" X 4" MATERIAL SPECIFIED. USUALLY, MOST 2" X 4" DUNNAGE PIECES WILL BE 38" LONG, HOWEVER, SOME 19" LONG PIECES MAY BE REQUIRED TO ACHIEVE THE STORAGE ARRANGEMENTS DEPICTED IN THIS DRAWING.
- F. IN CONJUNCTION WITH THE SPECIFIED STACK-LEVELING WEDGES AND/OR STACK-STABILIZING DUNNAGE, ADDITIONAL STACK-STABILIZING DUNNAGE IN THE FORM OF "SHIMS" PROBABLY WILL BE REQUIRED TO ACHIEVE SOUND AND ACCEPTABLE STABLE STACKS. SHIM MATERIAL OF VARYING THICKNESSES WILL BE USED BETWEEN STACKED UNITS AS REQUIRED TO GAIN LEVEL OR NEARLY LEVEL STACKS AND SOLID BEARING WITHIN A STACK FROM THE FLOOR OF A MAGAZINE TO THE TOP OF THE STACK. ALSO, "SHIMS" WILL BE USED IN LIEU OF SPECIFIED WEDGES IN STEEL ARCH TYPE MAGAZINES BECAUSE THE FLOOR SLOPES FROM THE REAR WALL TOWARD THE FRONT WALL. ADDITIONALLY, "SHIMS" CAN BE USED WITHIN AN IGLCO TYPE MAGAZINE INSTEAD OF THE SPECIFIED WEDGES, PROVIDING THE MAGAZINE FLOOR DOES NOT SLOPE MORE THAN 1-1/4" FROM THE CENTER TO A SIDEWALL.
- G. IF DESIRED, PALLET UNITS OF SEPARATE LOADING PROJECTILES MAY BE BUNDLED INTO GROUPS OF TWO (2) UNITS, AS SHOWN IN THE "BUNDLING DETAIL" ON PAGE 3. BUNDLING WILL PROVIDE FOR ADDED STACK STABILITY AND FACILITATE SAFE HANDLING.
- H. STORED PALLET UNITS MUST NOT CONTACT THE WALLS OF A MAGAZINE. TO PROVIDE FOR THIS MANDATORY CLEARANCE REQUIREMENT, UNITS MAY BE ELIMINATED FROM THE DEPICTED STORAGE PATTERN AS NECESSARY.
- J. AISLE DIMENSIONS SHOWN FOR STORAGE PROCEDURES IN MAGAZINES MAY BE ADJUSTED TO SUIT LOCAL CONDITIONS, VARIATIONS IN PALLET UNIT DIMENSIONS, AND/OR AVAILABLE MATERIALS HANDLING EQUIPMENT. AISLE SPACING FOR PROJECTILE STORAGE IN STANDARD ABOVE-GROUND MAGAZINES MUST COMPLY WITH NOSE TO NOSE AND BASE TO BASE DISTANCE REQUIREMENTS SPECIFIED ON PAGE 29.
- K. STORAGE PROCEDURES FOR PROJECTILE PALLET UNITS IN STANDARD ABOVE-GROUND MAGAZINES, AS DEPICTED ON PAGES 29 THRU 31, REQUIRE THE USE OF A SPECIAL "TURNING ATTACHMENT" ON THE FORKLIFT TRUCK FOR HANDLING AND STACKING THE UNITS. FOR DETAILS OF THE "TURNING ATTACHMENT", AUXILIARY PARTS, AND PROCEDURES FOR ITS OPERATION AND USE, SEE DRAWINGS NO. D-ORDJU-1361 AND 1362, C-ORDJU-1069, AND 19-48-1221-5P9.
- L. THE MAXIMUM FLOOR LOAD FOR A MAGAZINE AS PRESCRIBED BY LOCAL STANDARDS WILL NOT BE EXCEEDED.
- M. IF THE AVAILABLE MHE PERMITS, ADDITIONAL PALLET UNITS MAY BE STORED WITHIN THE MHE AREA AND/OR OTHER AVAILABLE AREA OF THE MAGAZINE.
- N. PORTIONS OF THE MAGAZINES, SUCH AS SIDEWALLS, END WALLS AND ROOFS, HAVE NOT BEEN SHOWN IN THE STORAGE VIEWS FOR CLARITY PURPOSES.
- O. DUNNAGE LUMBER SPECIFIED THROUGHOUT THIS PROCEDURAL DRAWING IS OF NOMINAL SIZE. FOR EXAMPLE, 2" X 4" MATERIAL IS ACTUALLY 1-1/2" THICK BY 3-1/2" WIDE.

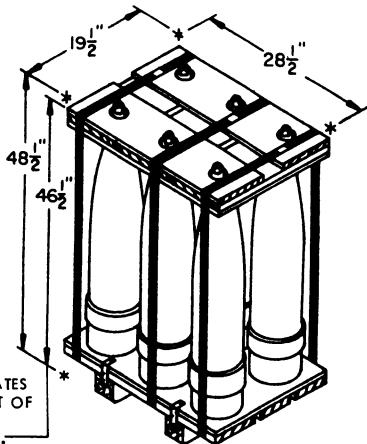
(CONTINUED AT RIGHT)

MATERIAL SPECIFICATIONS

- LUMBER -----: SEE TM 743-200-1, DUNNAGE LUMBER, FED SPEC MM-L-751.
- STRAPPING, STEEL ---: ASTM D 3953.4; FLAT STRAPPING, TYPE 1 OR 2, HEAVY DUTY, ZINC-COATED (GRADE 2).
- STRAP SEAL-----: ASTM D 3953; CLASS H, FINISH B (GRADE 2), TYPE D, STYLE I, II, OR IV.

(GENERAL NOTES CONTINUED)

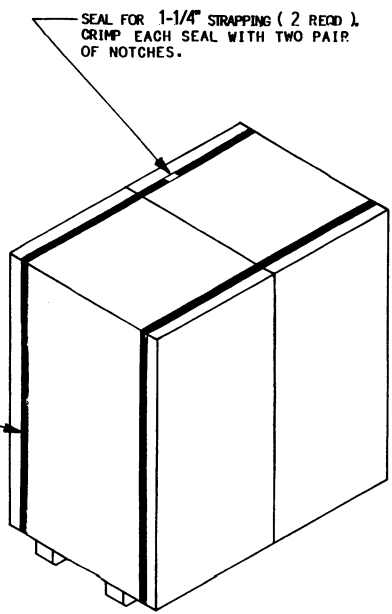
- P. STORAGE OF MULTIPLE LOTS IN A MAGAZINE WILL REQUIRE CAREFUL PRE-PLANNING SO AS TO INSURE MHE ACCESSIBILITY TO ANY LOT IN ACCORDANCE WITH REQUIREMENTS SET FORTH IN THE APPLICABLE "SPECIAL NOTES" SECTIONS OF THE MULTIPLE-LOT STORAGE PROCEDURES TYPICALLY SHOWN ON PAGES 22 THRU 28. FOR MULTIPLE LOT STORAGE IN STANDARD ABOVE-GROUND MAGAZINES, SEE SPECIAL NOTE 7 ON PAGE 29.
- Q. ANY "LIGHT" PALLET UNIT THAT DOES NOT CONTAIN A FULL QUANTITY OF SEPARATE LOADING PROJECTILES WILL NOT BE BURIED IN STORAGE. IT MUST BE POSITIONED ADJACENT TO AN AISLE, PREFERABLY IN FRONT OF THE LOT.
- R. SEPARATE LOADING PROJECTILES PRESENTLY STORED IN ACCORDANCE WITH A PRIOR APPROVED 19-48 SERIES DRAWING NEED NOT BE RE-STORED SOLELY TO CONFORM TO THE PROCEDURES SPECIFIED IN THIS DOCUMENT.



INDICATES HEIGHT OF PALLET COVER.

8" SLP
6 TALL /SMALL PALLET

UNIT WEIGHT ----- 1,296 LBS (APPROX)
CUBE ----- 15.6 CU FT

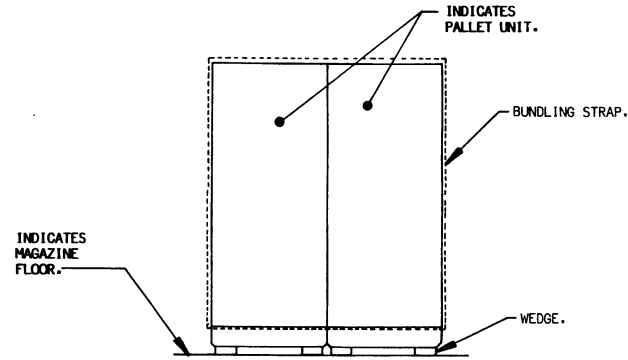


BUNDLING STRAP, 1-1/4" x .031" OR .035" STEEL STRAPPING BY A LENGTH REQUIRED TO ENCIRCLE TWO (2) PALLET UNITS (REF: 15'-0") (2REQD).

BUNDLING DETAIL

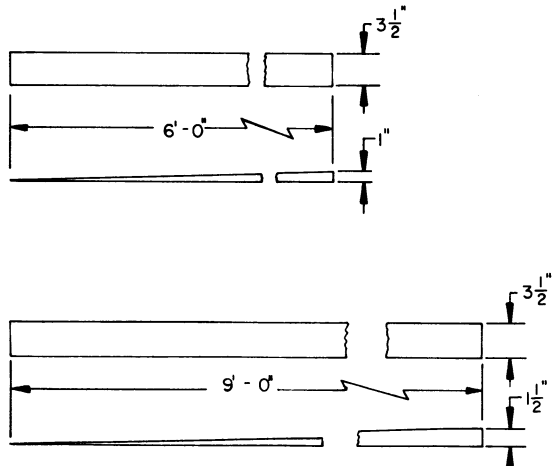
SPECIAL NOTES:

1. TO FACILITATE HANDLING DURING STORAGE OPERATIONS AND DURING OUTLOADING IN THE VARIOUS MODES OF TRANSPORTATION, PALLET UNITS OF 8" SEPARATE LOADING PROJECTILES ARE TO BE BUNDLED INTO GROUPS OF TWO PALLET UNITS TO THE MAXIMUM EXTENT POSSIBLE.
2. PALLET UNITS SHOULD ALREADY BE BUNDLED INTO GROUPS OF TWO USING TWO (2) EACH 1-1/4" x .031" OR .035" ZINC-COATED (GRADE 2) STEEL STRAPS WHEN RECEIVED FOR STORAGE. IN THE EVENT THE PALLET UNITS BEING RECEIVED ARE EITHER NOT BUNDLED AT ALL OR ARE NOT BUNDLED PROPERLY, THE PALLET UNITS MUST BE STRAPPED IN GROUPS OF TWO AS SHOWN ABOVE PRIOR TO PLACEMENT IN THE MAGAZINE.
3. FOR CLARITY, ONLY TWO TYPE "A" STACKS AND ONE TYPE "C" STACK IN AN APCII TYPE, STRADLEY, OR OVAL ARCH MAGAZINE HAVE BEEN BUNDLED WITH STEEL STRAPPING. ALSO, ONLY TWO STACKS HAVE BEEN BUNDLED IN CORBETTA OR RECTANGULAR MAGAZINES. BUNDLING IS ALSO APPLICABLE FOR MULTIPLE LOT STORAGE ALTHOUGH NOT SHOWN IN ANY OF THE STORAGE VIEWS.



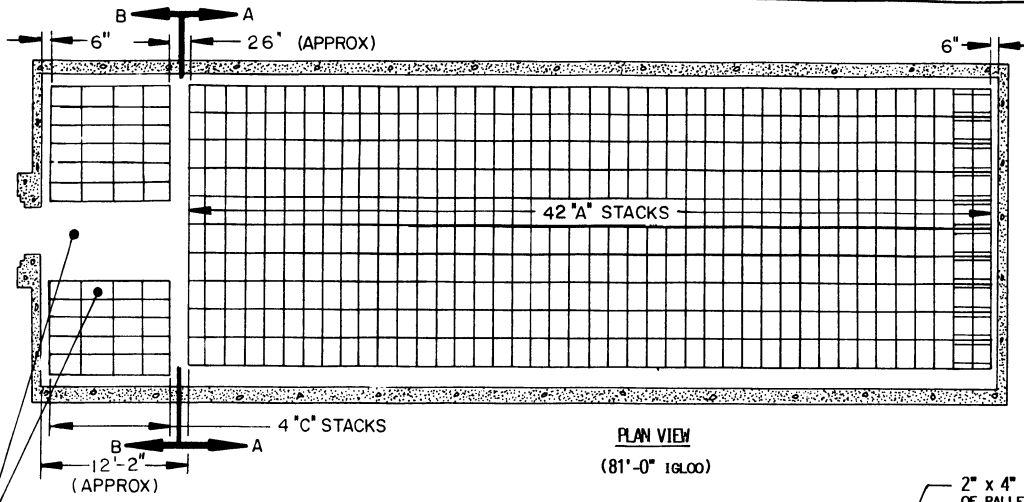
WEDGE LOCATION DETAIL

ISOMETRIC VIEWS WITHIN THIS DRAWING DO NOT DEPICT ALL WEDGES THAT ARE REQUIRED. WEDGES ARE SHOWN AT SOME LOCATIONS TO PROVIDE POSITIONING GUIDANCE. THE ABOVE VIEW IS APPLICABLE FOR TYPE "A" STACKS IN THE STRADLEY MAGAZINES AND ALL THE ARCH TYPE MAGAZINES EXCEPT THE STEEL ARCH ON PAGES 14 AND 15. FOR TYPE "C" STACKS THE WEDGES WILL BE PLACED UNDER THE PALLET SKIDS SO AS TO BE PARALLEL WITH THE SKIDS.



WEDGE DETAILS
2" x 4" MATERIAL

DETAILS



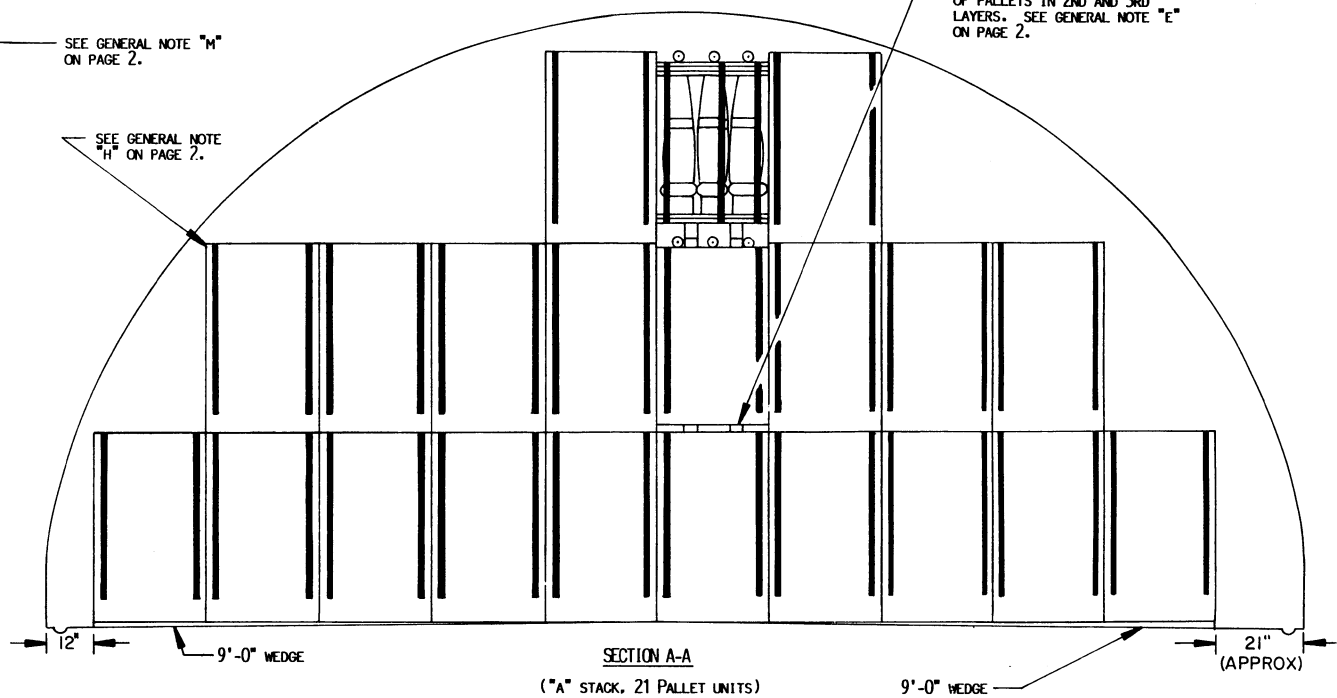
STORAGE IN 81'-0" IGL00
(12'-9" HIGH)

ITEM	QUANTITY
PALLET UNITS-----	942
PROJECTILES-----	5,652

SEE GENERAL NOTE "M" ON PAGE 2.

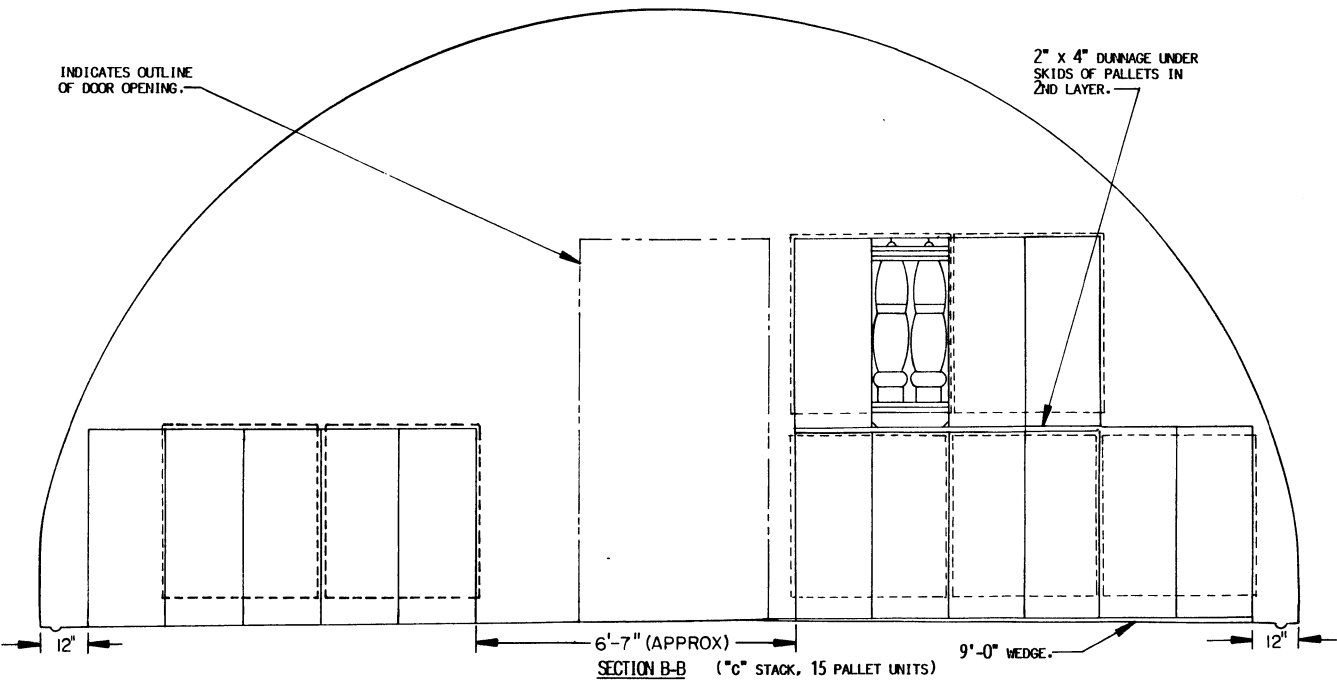
SEE GENERAL NOTE "H" ON PAGE 2.

2" x 4" DUNNAGE UNDER SKIDS OF PALLETS IN 2ND AND 3RD LAYERS. SEE GENERAL NOTE "E" ON PAGE 2.



INDICATES OUTLINE OF DOOR OPENING.

2" x 4" DUNNAGE UNDER SKIDS OF PALLETS IN 2ND LAYER.



STORAGE IN 60'-8" IGL00

(12'-9" HIGH)

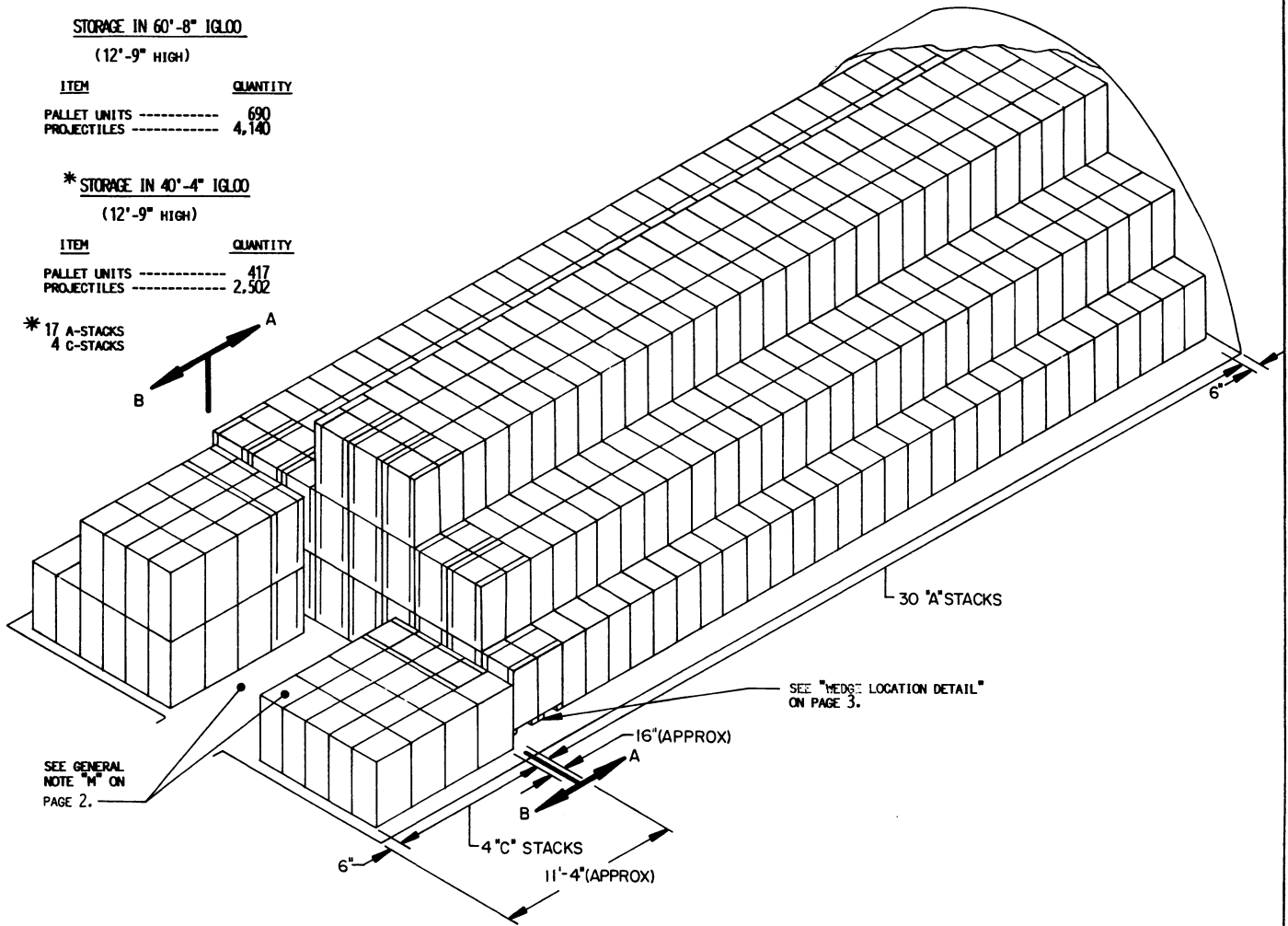
ITEM	QUANTITY
PALLET UNITS -----	690
PROJECTILES -----	4,140

*** STORAGE IN 40'-4" IGL00**

(12'-9" HIGH)

ITEM	QUANTITY
PALLET UNITS -----	417
PROJECTILES -----	2,502

* 17 A-STACKS
4 C-STACKS

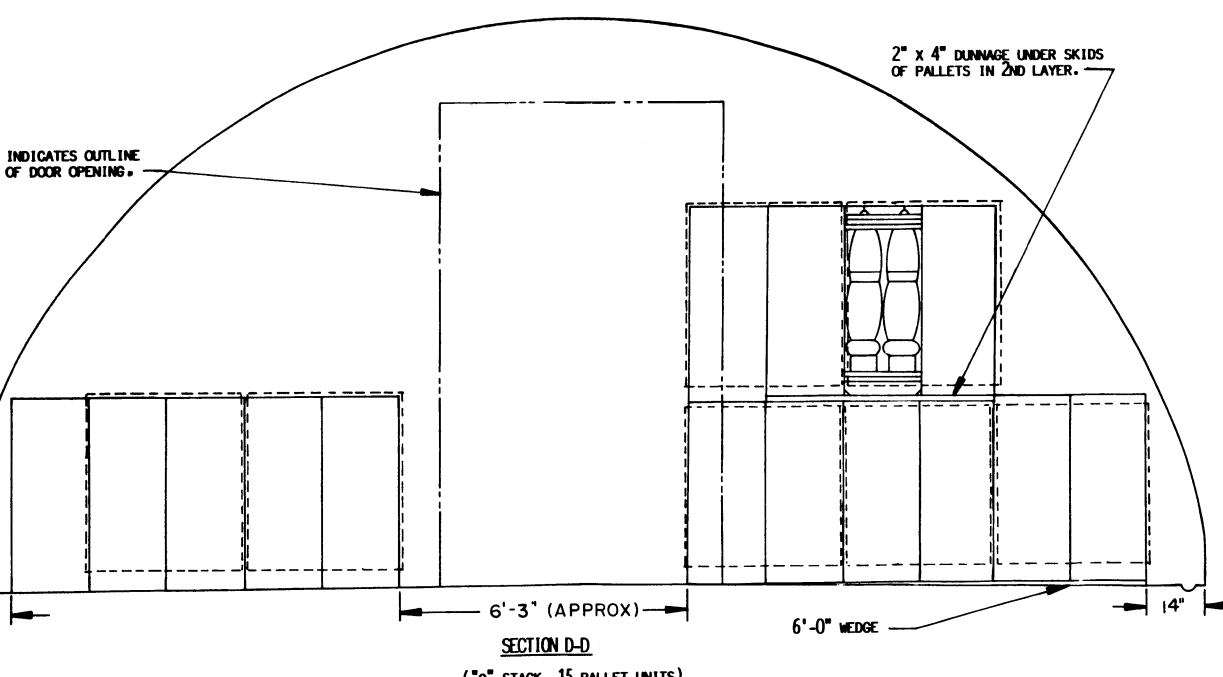
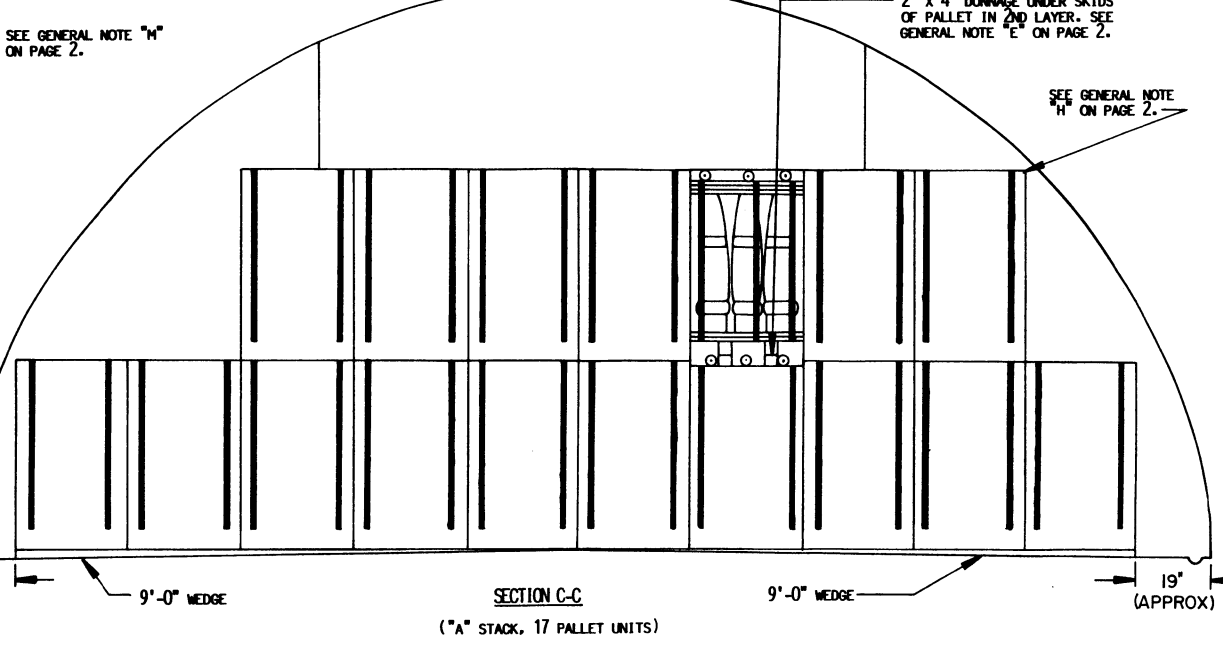
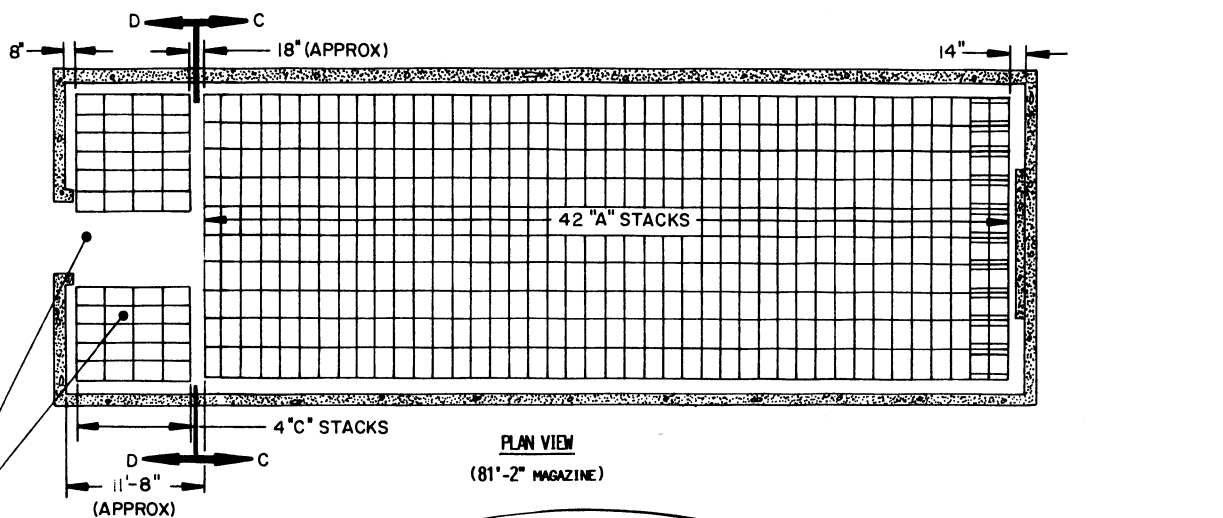


ISOMETRIC VIEW
(60'-8" IGL00)

FOR "GENERAL NOTES" AND "MATERIAL SPECIFICATIONS",
SEE PAGE 2. FOR "WEDGE DETAILS", SEE PAGE 3.

BILL OF MATERIAL (PER STACK)			
TYPE STACK	WEDGES	2" x 4" DUNNAGE LUMBER	
		LINEAR FEET	BOARD FEET
A	4 REQD	34.84	23.23
C	2 REQD	12.67	8.45

SEE GENERAL NOTE "F" ON PAGE 2

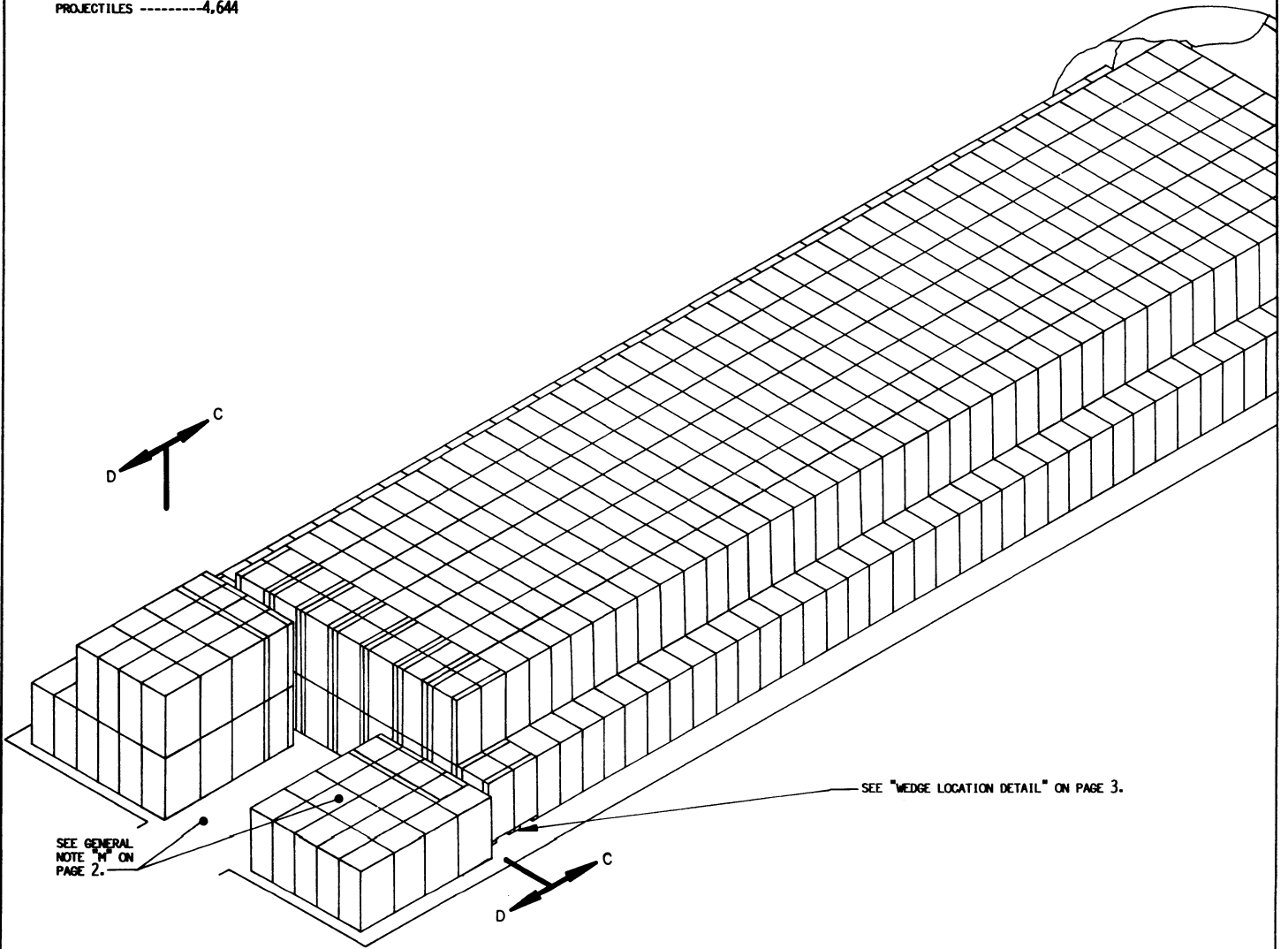


STORAGE PROCEDURES IN 81'-2" L X 26'-6" W X 12'-1-3/4" H ARCH TYPE MAGAZINE (1GLOO)

STORAGE IN 81'-2" MAGAZINE

(12'-1-3/4" HIGH)

ITEM	QUANTITY
PALLET UNITS -----	774
PROJECTILES -----	4,644



ISOMETRIC VIEW
(81'-2" MAGAZINE)

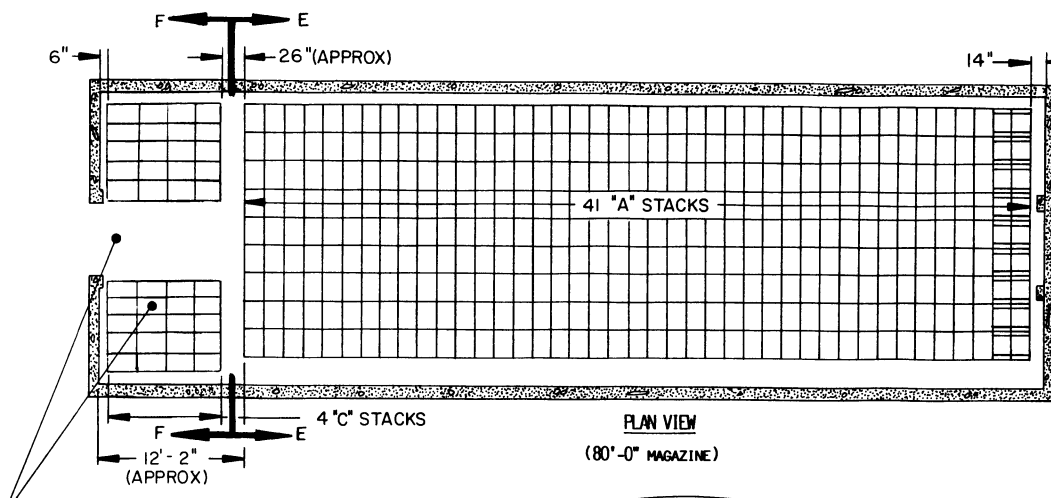
FOR "GENERAL NOTES" AND "MATERIAL SPECIFICATIONS",
SEE PAGE 2. FOR "WEDGE DETAILS", SEE PAGE 3.

BILL OF MATERIAL (PER STACK)				
TYPE STACK	WEDGES		2" x 4" DUNNAGE LUMBER	
	9'-0"	6'-0"	LINEAR FEET	BOARD FEET
A	4 RECD		22.17	14.78
C		2 RECD	12.67	8.45

SEE GENERAL NOTE "F" ON PAGE 2.

STORAGE IN 80'-0" MAGAZINE
(12'-1-3/4" HIGH)

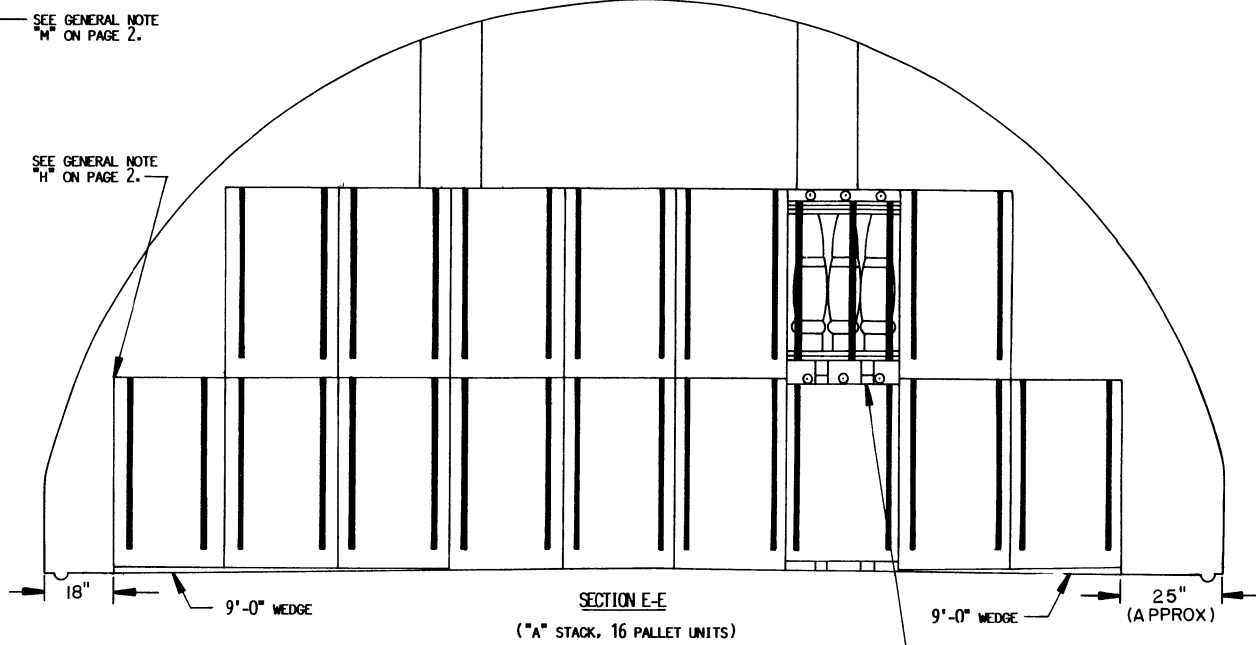
ITEM	QUANTITY
PALLET UNITS-----	716
PROJECTILES-----	4,296



PLAN VIEW
(80'-0" MAGAZINE)

SEE GENERAL NOTE "H" ON PAGE 2.

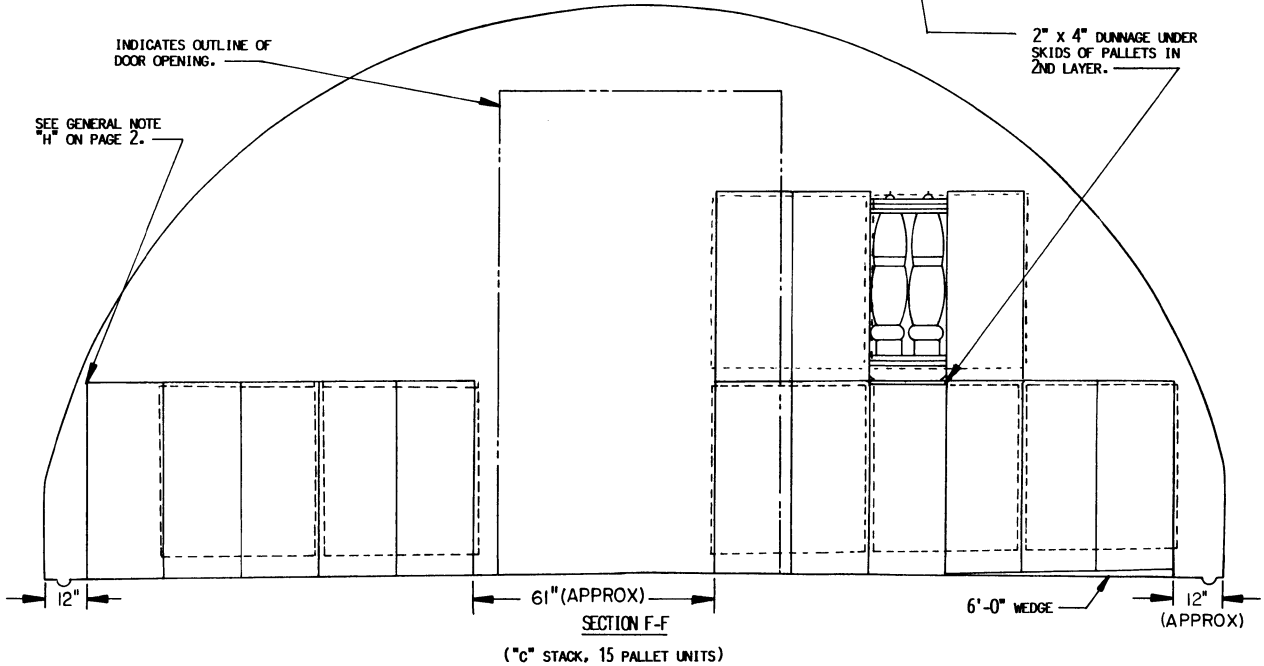
SEE GENERAL NOTE "H" ON PAGE 2.



INDICATES OUTLINE OF DOOR OPENING.

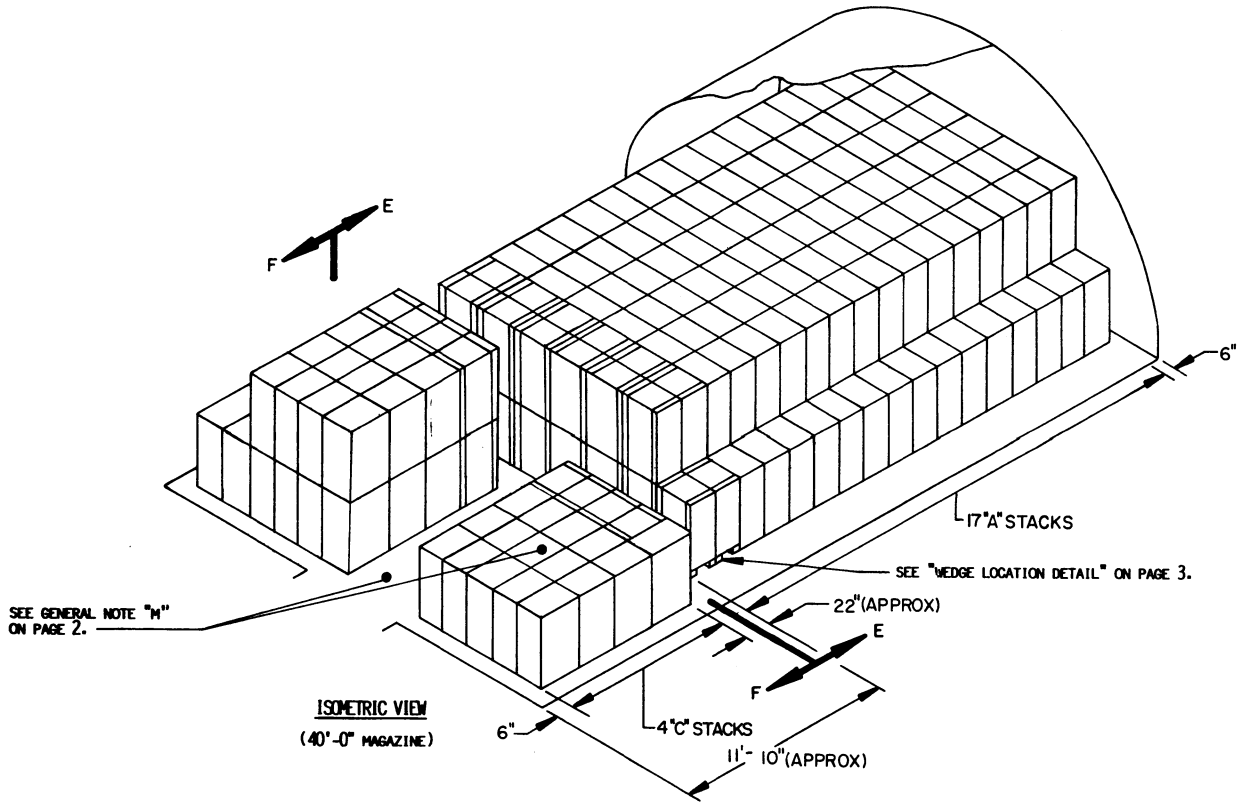
2" x 4" DUNNAGE UNDER SKIDS OF PALLETS IN 2ND LAYER.

SEE GENERAL NOTE "H" ON PAGE 2.



STORAGE IN 40'-0" MAGAZINE
(12'-1-3/4" HIGH)

ITEM	QUANTITY
PALLET UNITS -----	332
PROJECTILES -----	1,992



FOR "GENERAL NOTES" AND "MATERIAL SPECIFICATIONS",
SEE PAGE 2. FOR "WEDGE DETAILS" SEE PAGE 3.

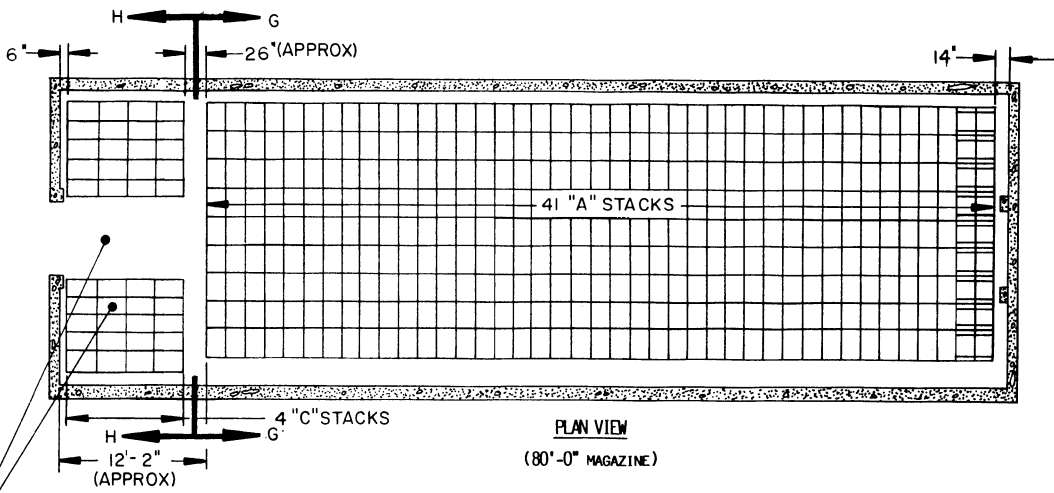
BILL OF MATERIAL (PER STACK)				
TYPE STACK	WEDGES		2" x 4" DUNNAGE LUMBER	
	9'-0"	6'-0"	LINEAR FEET	BOARD FEET
A	4 RECD		22.17	14.78
B		2 RECD	12.67	8.45

SEE GENERAL NOTE "F" ON PAGE 2.

STORAGE IN 80'-0" MAGAZINE

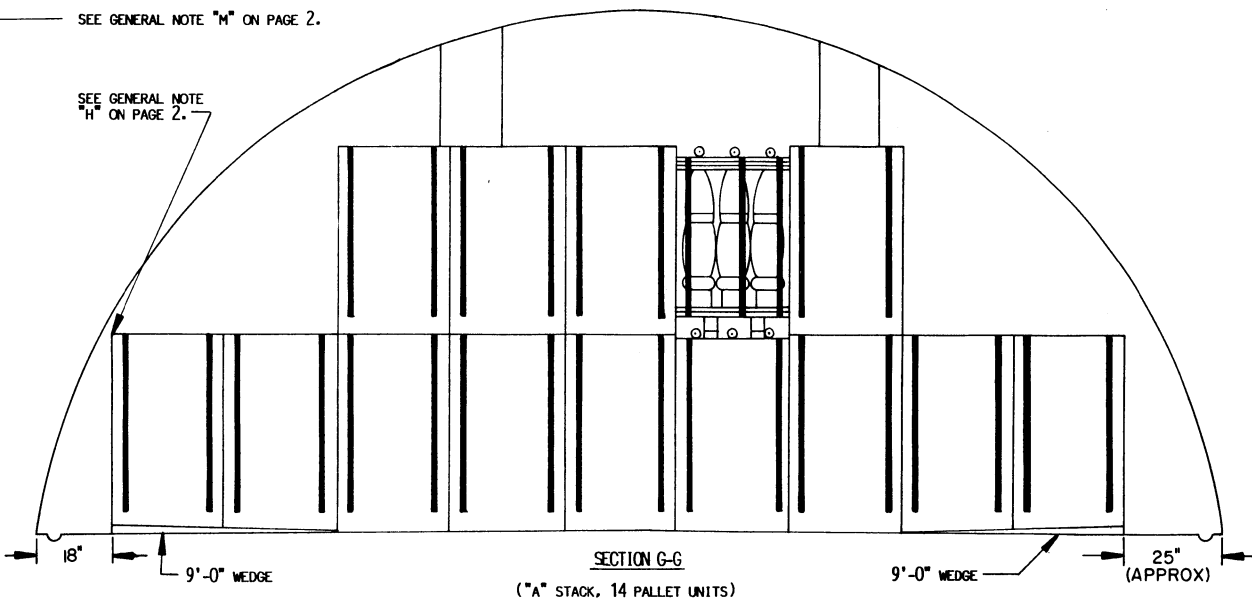
(11'-0" HIGH)

ITEM	QUANTITY
PALLET UNITS-----	634
PROJECTILES-----	3,804



SEE GENERAL NOTE "M" ON PAGE 2.

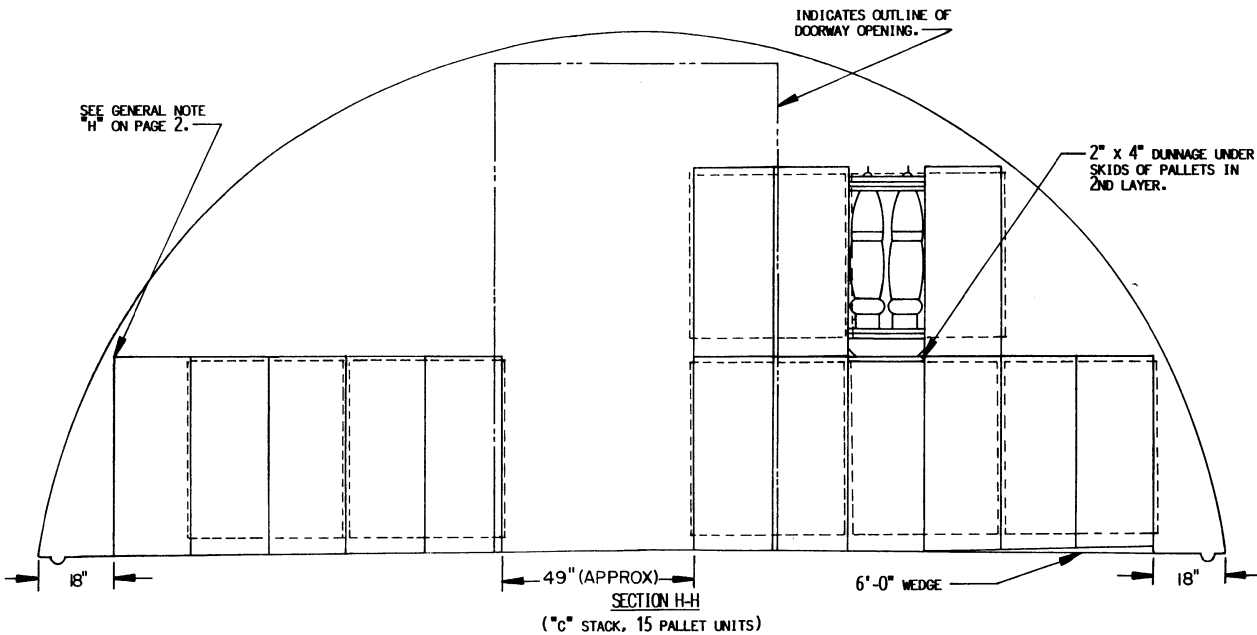
SEE GENERAL NOTE "H" ON PAGE 2.



INDICATES OUTLINE OF DOORWAY OPENING.

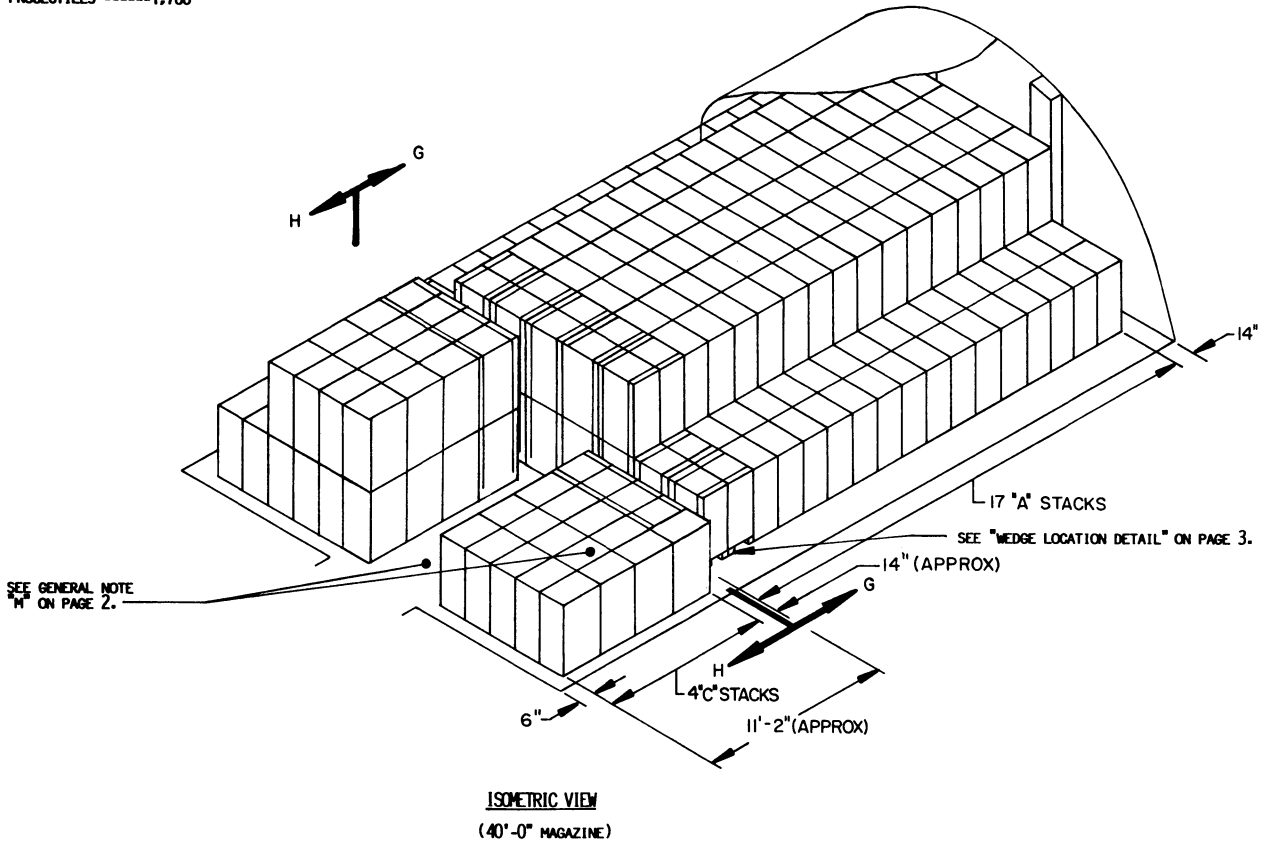
SEE GENERAL NOTE "H" ON PAGE 2.

2" x 4" DUNNAGE UNDER SKIDS OF PALLET IN 2ND LAYER.



STORAGE IN 40'-0" MAGAZINE
(11'-0" HIGH)

ITEM	QUANTITY
PALLET UNITS -----	298
PROJECTILES -----	1,788

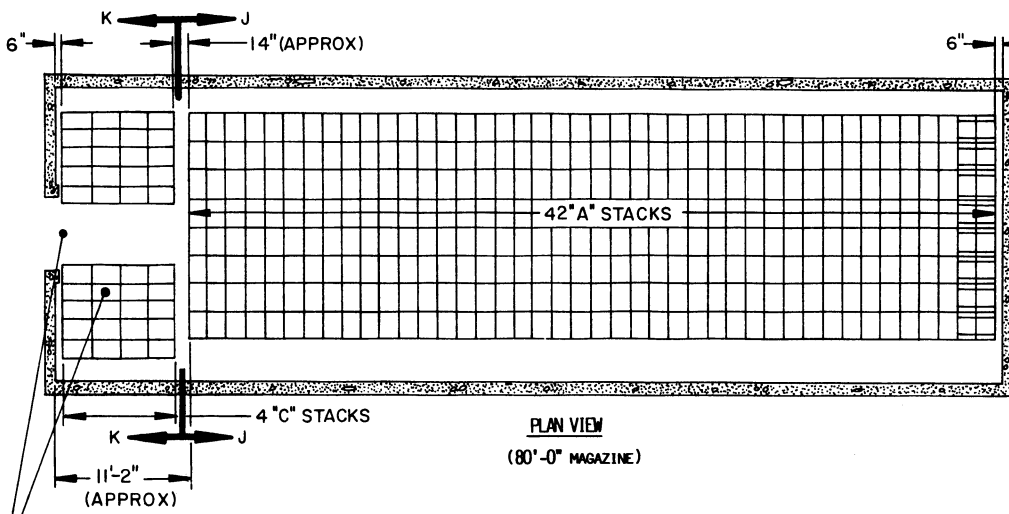


FOR "GENERAL NOTES" AND "MATERIAL SPECIFICATIONS",

SEE PAGE 2. FOR "WEDGE DETAILS" SEE PAGE 3.

BILL OF MATERIAL (PER STACK)				
TYPE STACK	WEDGES		2" x 4" DUNNAGE LUMBER	
	9'-0"	6'-0"	LINEAR FEET	BOARD FEET
A	4 REQD		15.83	10.56
B		2 REQD	12.67	8.45

SEE GENERAL NOTE "F" ON PAGE 2.



STORAGE IN 80'-0" MAGAZINE
(10'-0" HIGH)

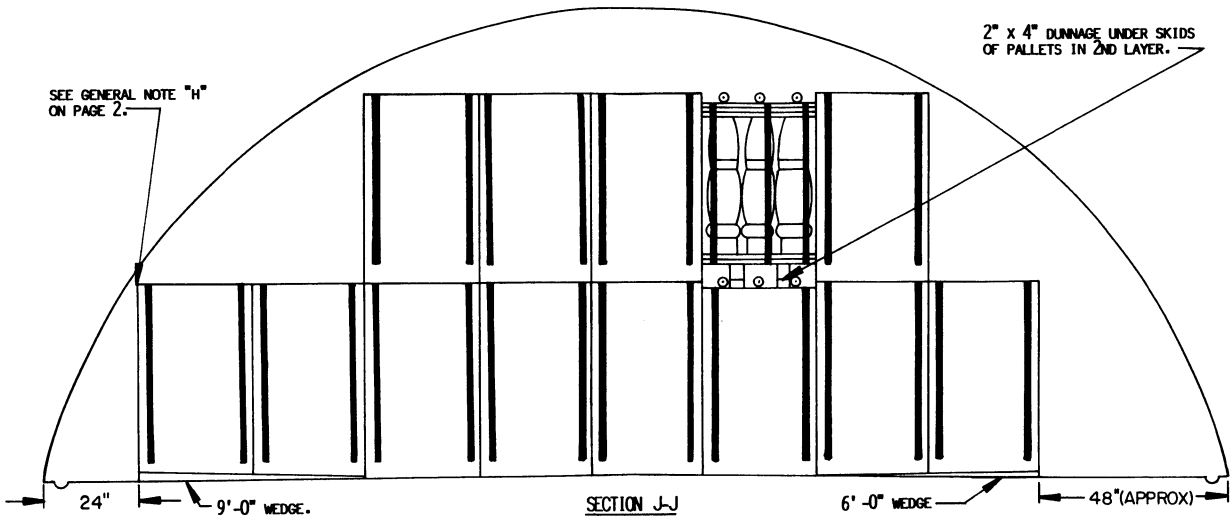
ITEM	QUANTITY
PALLET UNITS -----	594
PROJECTILES -----	3,564

PLAN VIEW
(80'-0" MAGAZINE)

SEE GENERAL NOTE "H"
ON PAGE 2.

SEE GENERAL NOTE "H"
ON PAGE 2.

2" x 4" DUNNAGE UNDER SKIDS
OF PALLETS IN 2ND LAYER.

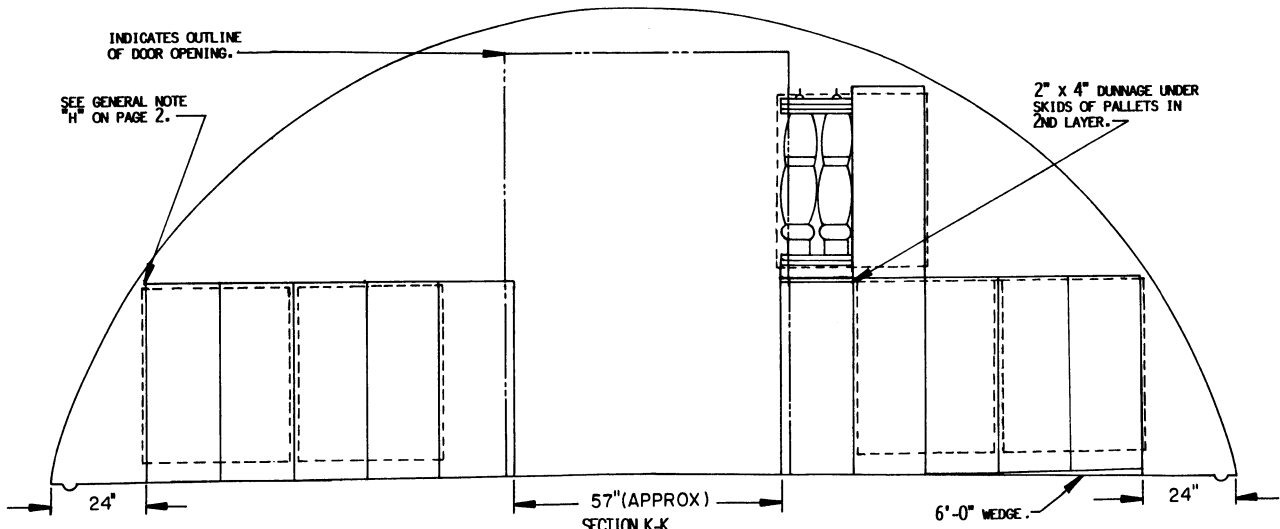


SECTION J-J
("A" STACK, 13 PALLET UNITS)

INDICATES OUTLINE
OF DOOR OPENING.

SEE GENERAL NOTE
"H" ON PAGE 2.

2" x 4" DUNNAGE UNDER
SKIDS OF PALLETS IN
2ND LAYER.

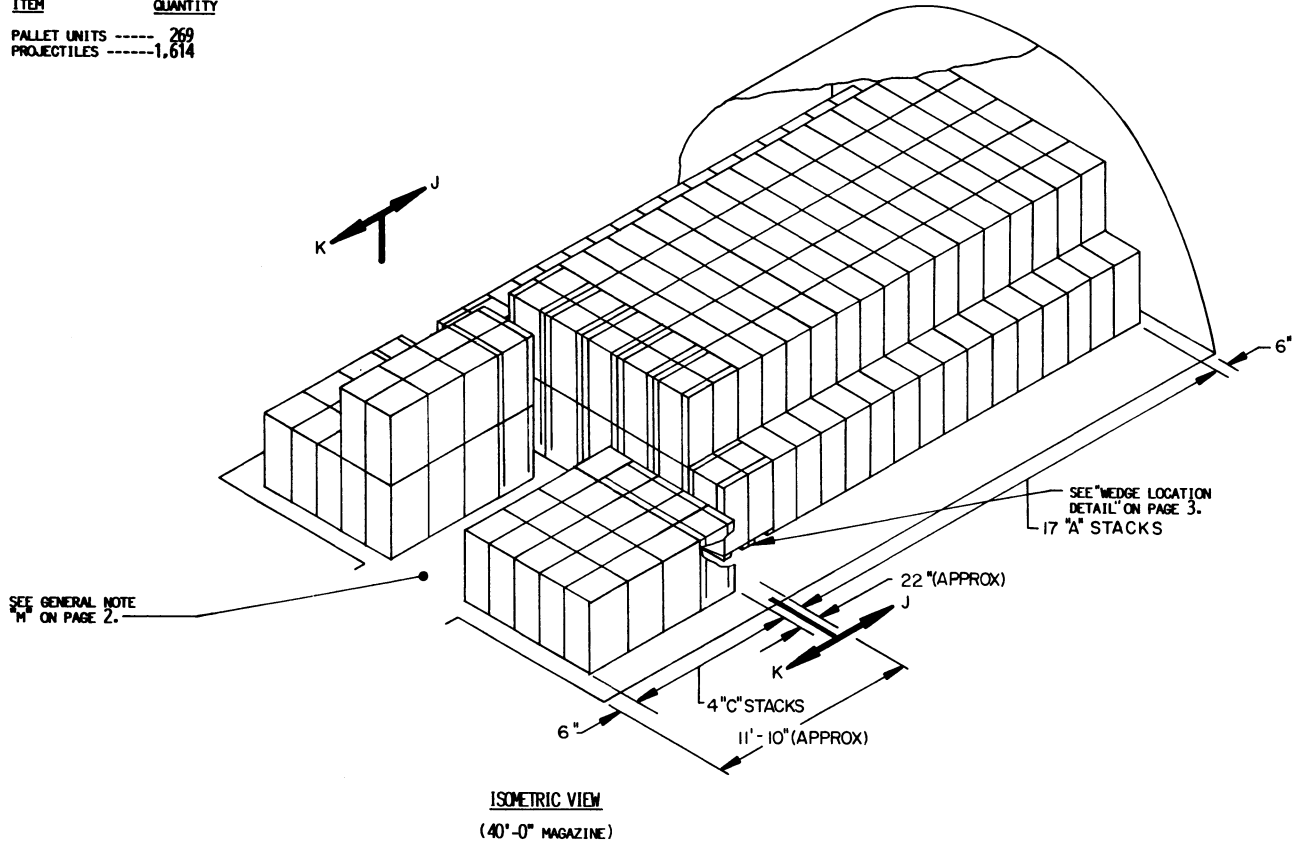


SECTION K-K
("C" STACK, 12 PALLET UNITS)

STORAGE IN 40'-0" MAGAZINE

(10'-0" HIGH)

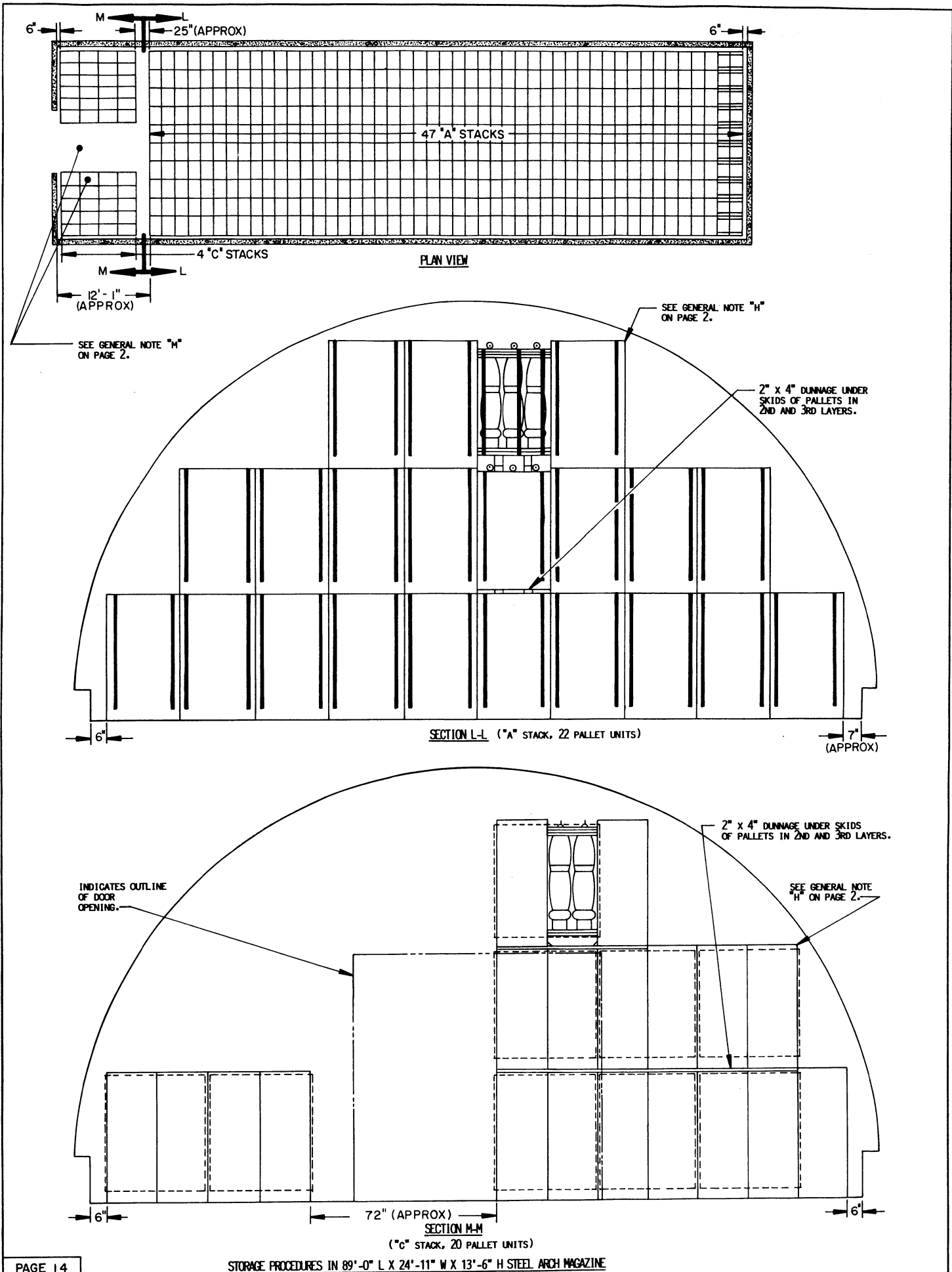
ITEM	QUANTITY
PALLET UNITS -----	269
PROJECTILES -----	1,614



FOR "GENERAL NOTES" AND "MATERIAL SPECIFICATIONS",
SEE PAGE 2. FOR "WEDGE DETAILS" SEE PAGE 3.

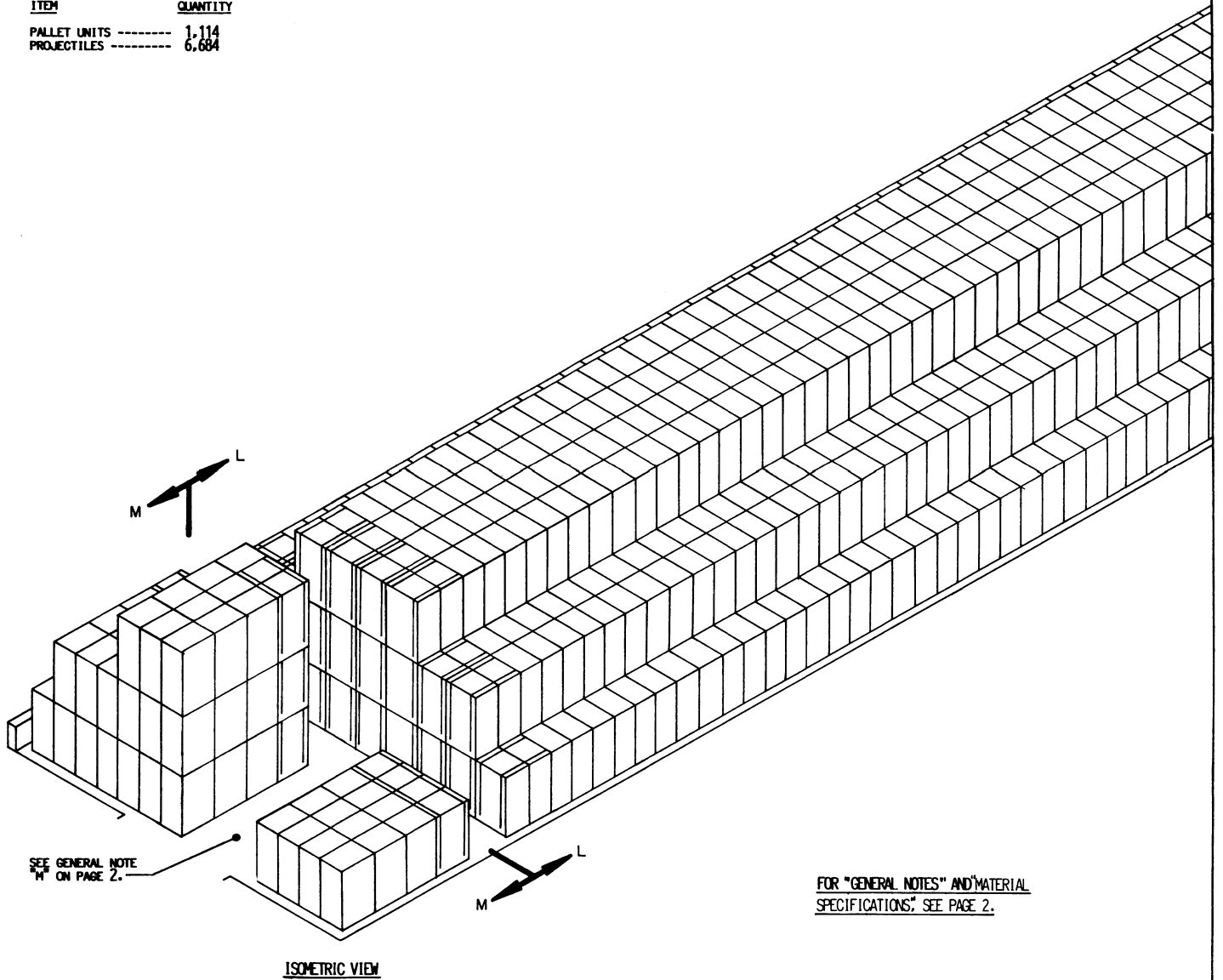
BILL OF MATERIAL (PER STACK)				
TYPE STACK	WEDGES		2" x 4" DUNNAGE LUMBER	
	9'-10"	6'-0"	LINEAR FEET	BOARD FEET
A	2 RECD	2 RECD	15.83	10.56
C		2 RECD	6.34	4.23

SEE GENERAL NOTE "F" ON PAGE 2.



STORAGE IN STEEL ARCH MAGAZINE

ITEM	QUANTITY
PALLET UNITS -----	1,114
PROJECTILES -----	6,684



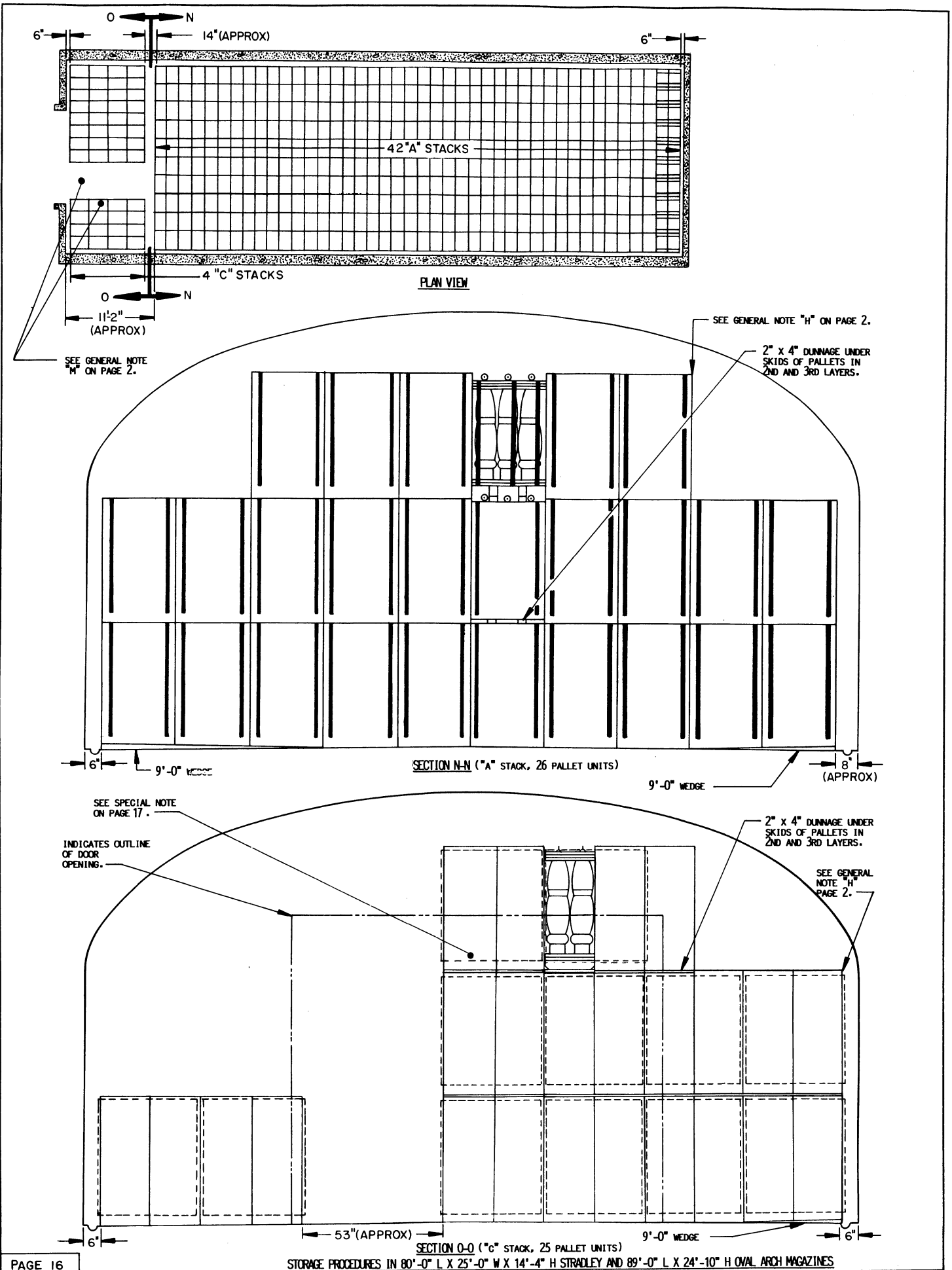
SEE GENERAL NOTE "M" ON PAGE 2.

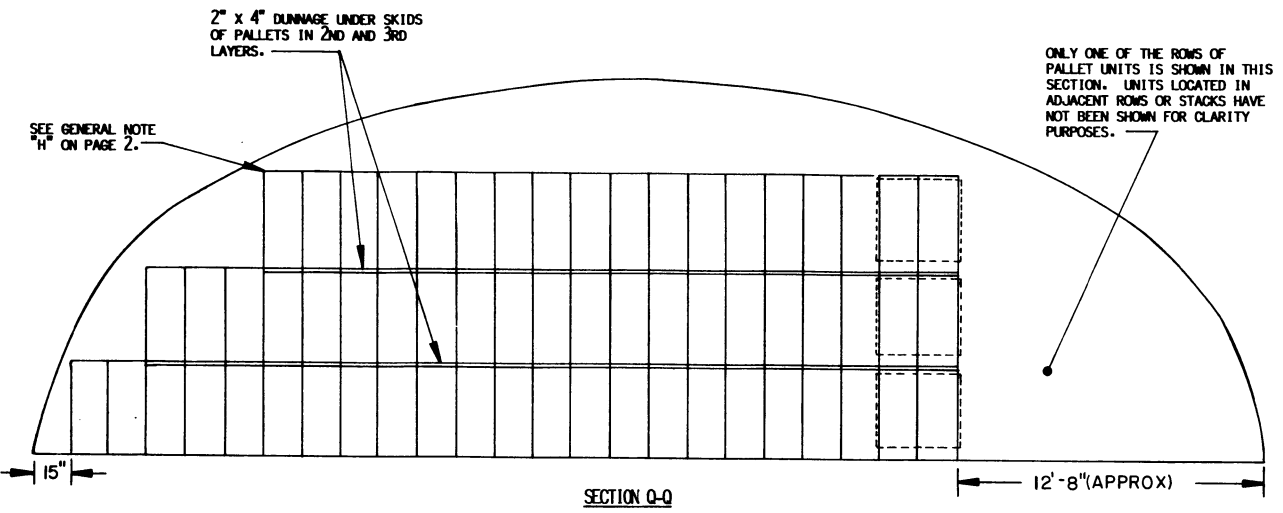
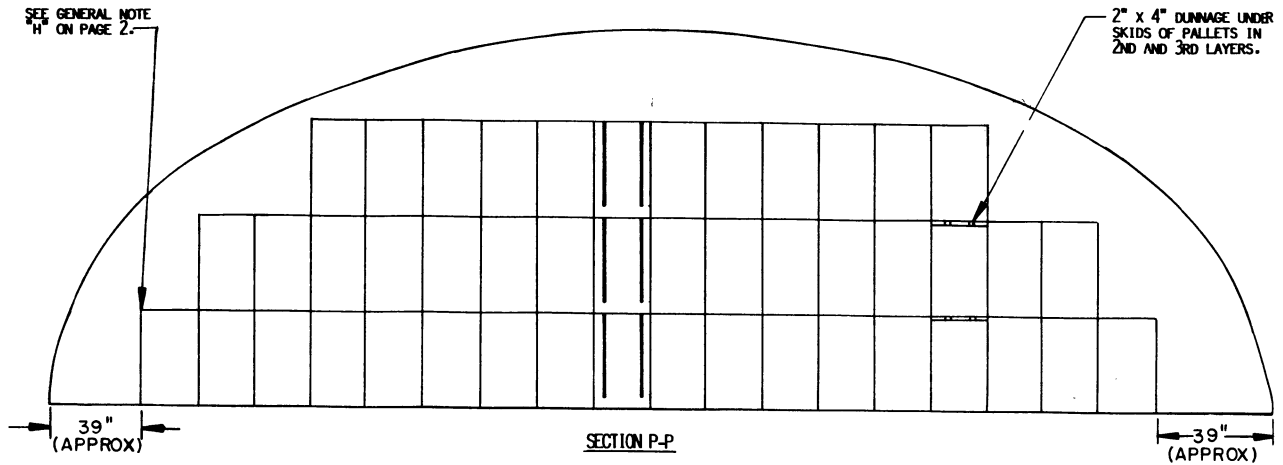
FOR "GENERAL NOTES" AND "MATERIAL SPECIFICATIONS," SEE PAGE 2.

ISOMETRIC VIEW

BILL OF MATERIAL (PER STACK)		
TYPE STACK	2" x 4" DUNNAGE LUMBER	
	LINEAR FEET	BOARD FEET
A	38.0	25.34
C	22.17	14.78

SEE GENERAL NOTE "F" ON PAGE 2

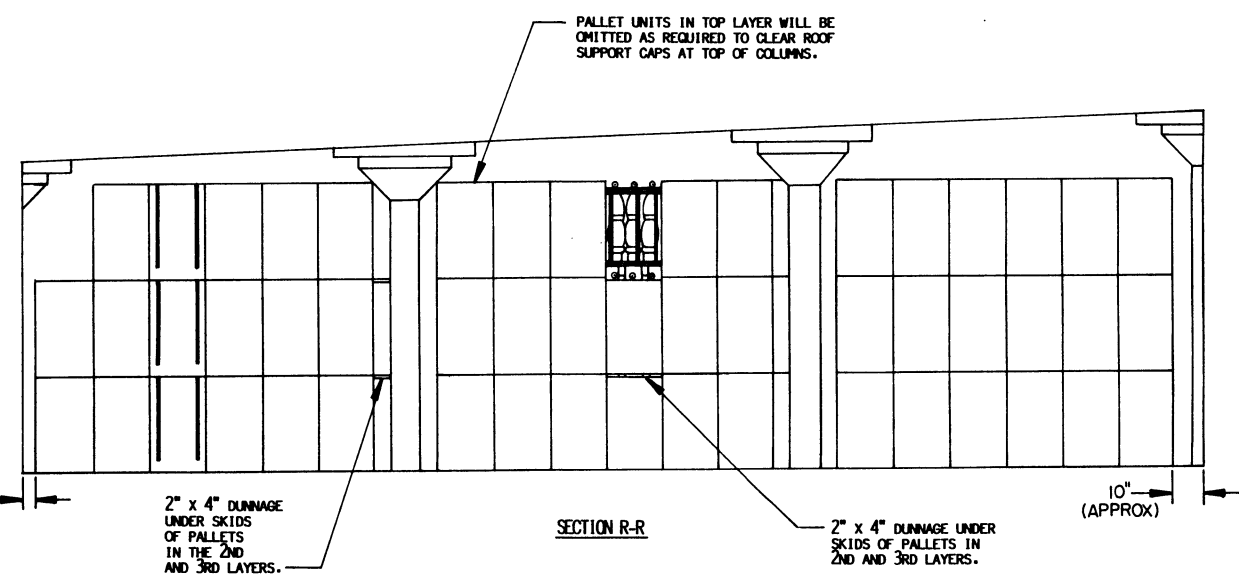
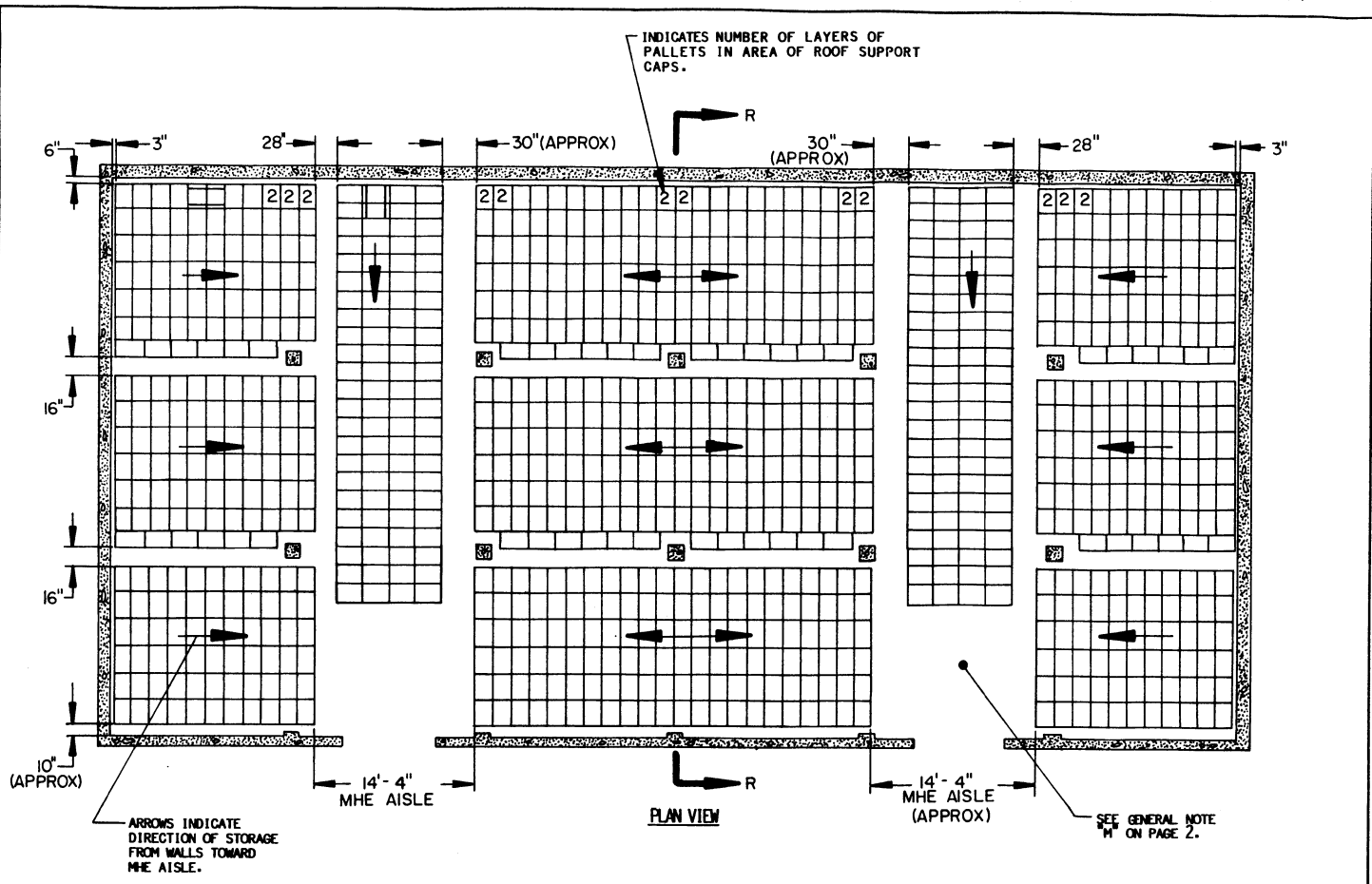




FOR "GENERAL NOTES" AND "MATERIAL SPECIFICATIONS", SEE PAGE 2.

BILL OF MATERIAL (PER PALLET STACK)		
STACK HEIGHT	2" x 4" DUNNAGE LUMBER	
	LINEAR FEET	BOARD FEET
2	3.17	2.12
3	6.34	4.23

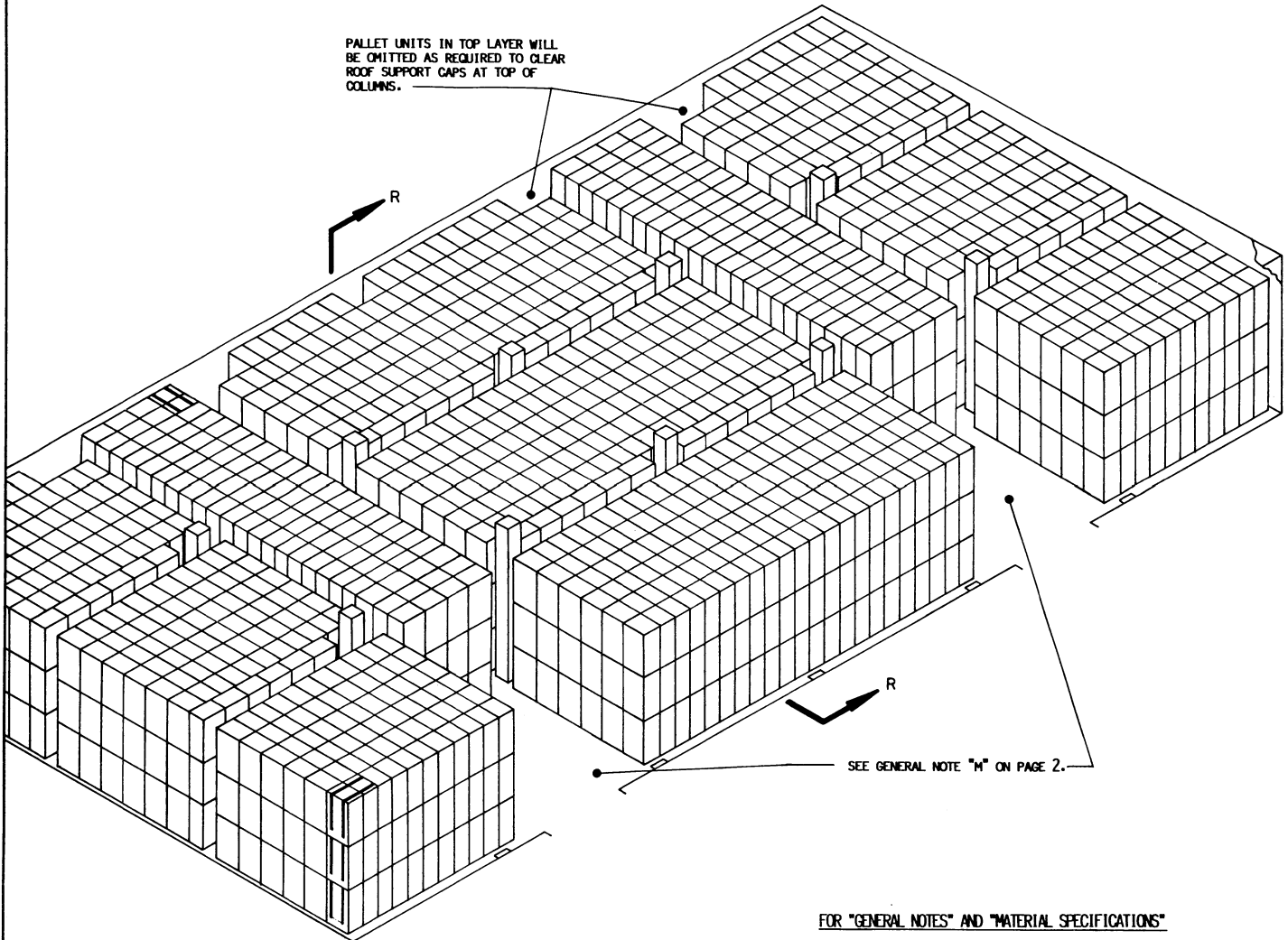
SEE GENERAL NOTES "E" AND "F" ON PAGE 2.



STORAGE IN 100' X 50' MAGAZINE

<u>ITEM</u>	<u>QUANTITY</u>
PALLET UNITS -----	3,060
PROJECTILES -----	18,360

PALLET UNITS IN TOP LAYER WILL BE OMITTED AS REQUIRED TO CLEAR ROOF SUPPORT CAPS AT TOP OF COLUMNS.



ISOMETRIC VIEW

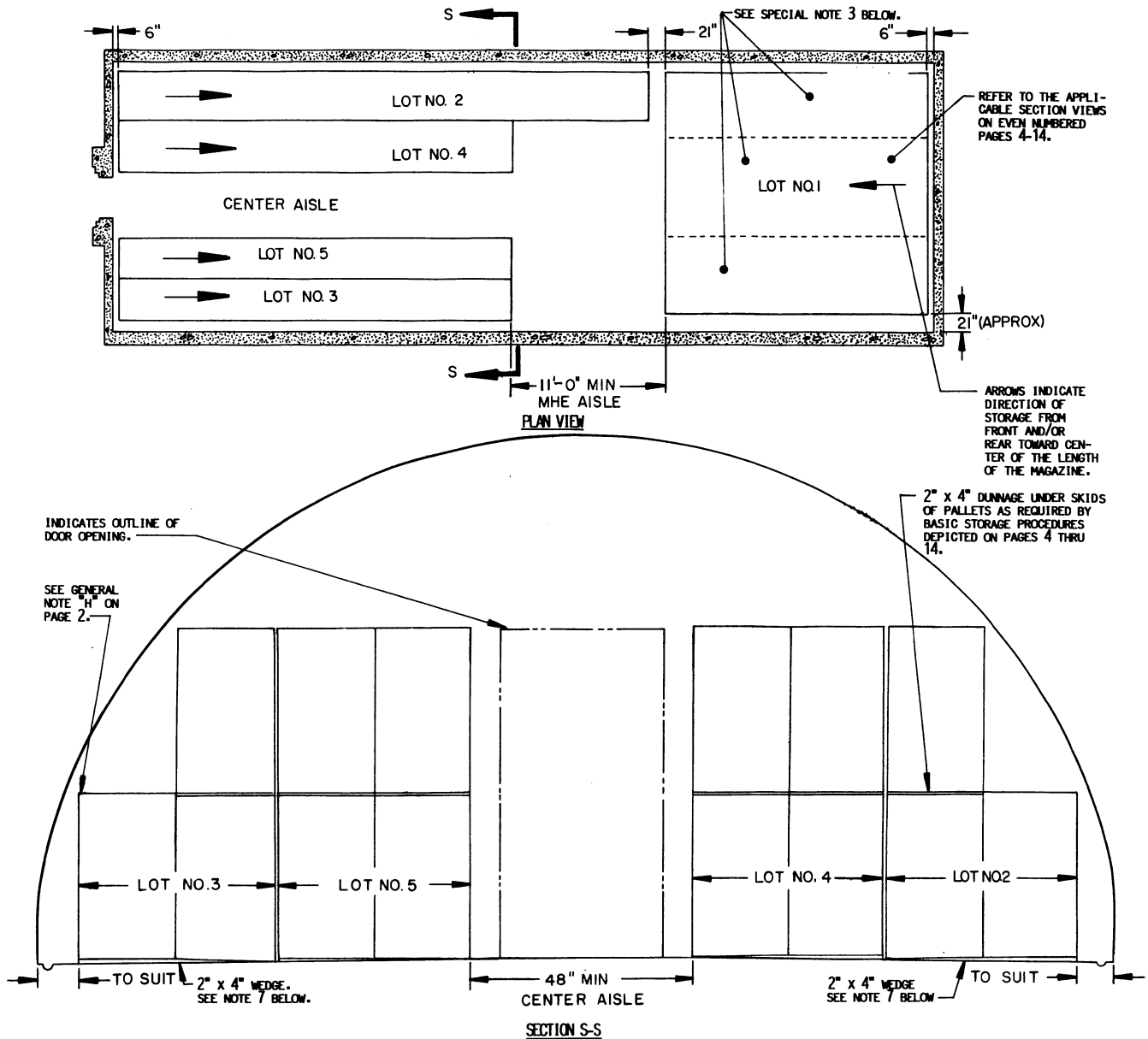
FOR "GENERAL NOTES" AND "MATERIAL SPECIFICATIONS"
SEE PAGE 2.

SPECIAL NOTE:

IF THE QUANTITY FOR A MAGAZINE IS TO BE REDUCED FROM WHAT IS SHOWN DUE TO THE PERMITTED "EXPLOSIVE LIMIT" OR FOR ANY OTHER REASON, SUCH AS A LIMITED QUANTITY TO BE STORED - THE DELINEATED PROCEDURES ARE TO BE ADJUSTED BY OMITTING STACKS RATHER THAN BY OMITTING LAYERS.

<u>BILL OF MATERIAL (PER PALLET STACK)</u>		
<u>STACK HEIGHT</u>	<u>2" x 4" DUNNAGE LUMBER</u>	
	<u>LINEAR FEET</u>	<u>BOARD FEET</u>
3	6.34	4.23
2	3.17	2.12

SEE GENERAL NOTES "E" AND "F" ON PAGE 2.



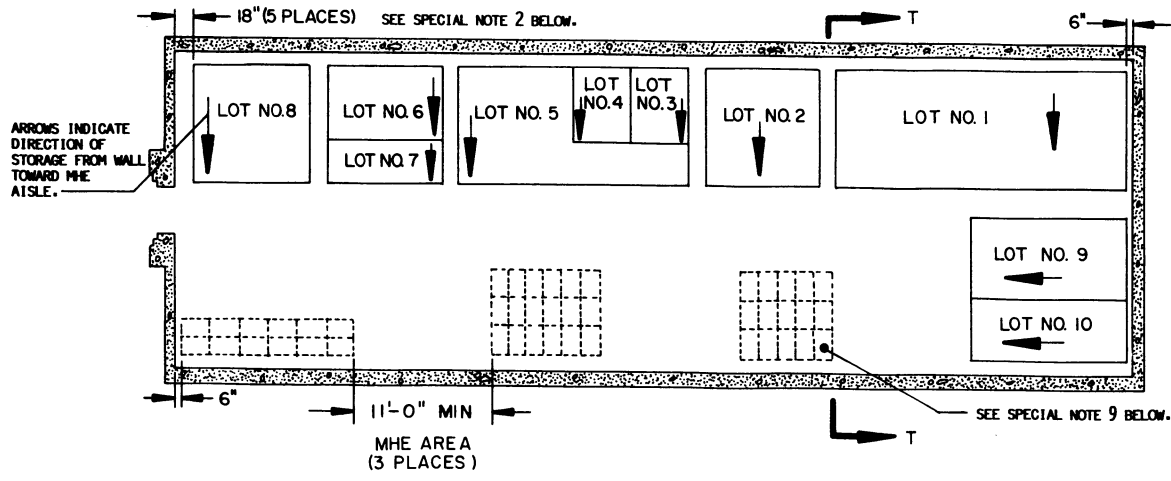
SPECIAL NOTES:

1. THE STORAGE PLANS AND CONFIGURATIONS SHOWN ON THIS PAGE ARE TYPICAL ONLY AND APPLY TO RELATIVELY LARGE LOTS. ADAPTATIONS MAY BE MADE AS NUMBER AND SIZES OF LOTS TO BE STORED IN MAGAZINE REQUIRE.
2. AN INSPECTION/INVENTORY AISLE MUST BE PROVIDED AT ONE SIDE OR END OF EACH LOT.
3. GENERALLY, THE LARGEST LOT SHOULD BE STORED IN THE REAR OF THE MAGAZINE. HOWEVER, THE REAR AREA MAY BE USED TO STORE MORE THAN ONE LOT BY ERECTING ROWS SIMILAR TO THOSE SHOWN IN THE FRONT OF THE MAGAZINE. A CENTER AISLE WILL NOT BE REQUIRED IN THE REAR AREA AS LONG AS EACH LOT IS ACCESSIBLE FOR REMOVAL AND INSPECTION/INVENTORY IN ACCORDANCE WITH OTHER CRITERIA SPECIFIED IN THESE SPECIAL NOTES AND IN THE GENERAL NOTES ON PAGE 2.
4. EACH LOT WITHIN THE MAGAZINE MUST BE ACCESSIBLE FOR MOVEMENT BY MHE. A SINGLE LOT OF PALLET UNITS IS CONSIDERED "ACCESSIBLE" IF NO MORE THAN TWELVE (12) "LIFTS" OF ANOTHER LOT OR LOTS HAVE TO BE MADE TO GAIN ACCESS TO THAT LOT. THE TERM "LIFT" MEANS HANDLING AND MOVING NOT MORE THAN TWO (2) PALLET UNITS OF PROJECTILES AT ONE TIME.
5. FOR STORAGE OF MULTIPLE LOTS, THE DISTANCE FROM THE SIDEWALL WILL BE BASED ON THE OVERHEAD CLEARANCE REQUIRED FOR MHE.

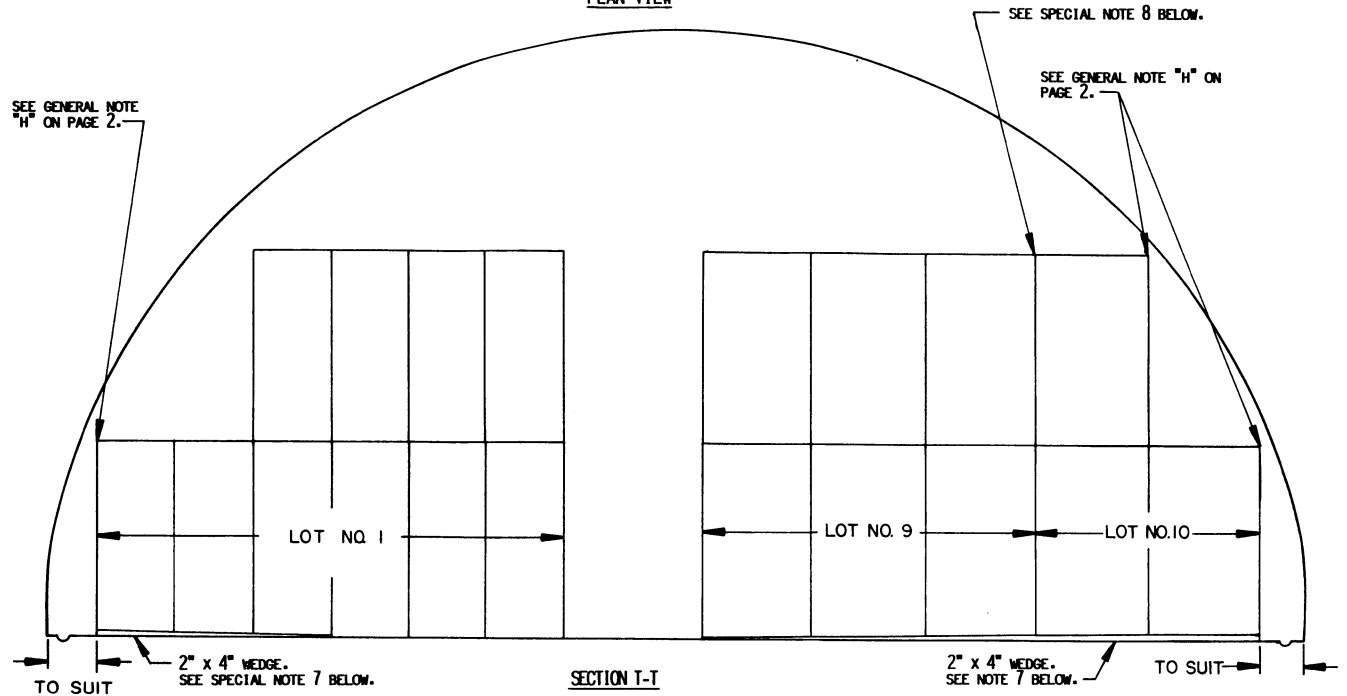
(CONTINUED AT RIGHT)

(SPECIAL NOTES CONTINUED)

6. EACH LOT MUST BE STORED TWO (2) UNITS (MINIMUM) WIDE TO ACCOMMODATE WIDTH OF MHE DURING OPERATIONS, EXCEPT FOR A ROW ADJACENT TO A CENTER AISLE.
7. LENGTH OF 2" x 4" WEDGES WILL BE DETERMINED BY THE WIDTH OF THE LOT IN ROWS. WEDGES WILL NOT EXTEND INTO AISLE OR UNDER ADJACENT LOTS.
8. WHEN TWO LOTS ARE STORED ADJACENT TO EACH OTHER, THEY SHOULD BE SEPARATED BY AT LEAST 1" TO PROVIDE CLEARANCE FOR REMOVAL OF EITHER LOT.



PLAN VIEW



SECTION T-T

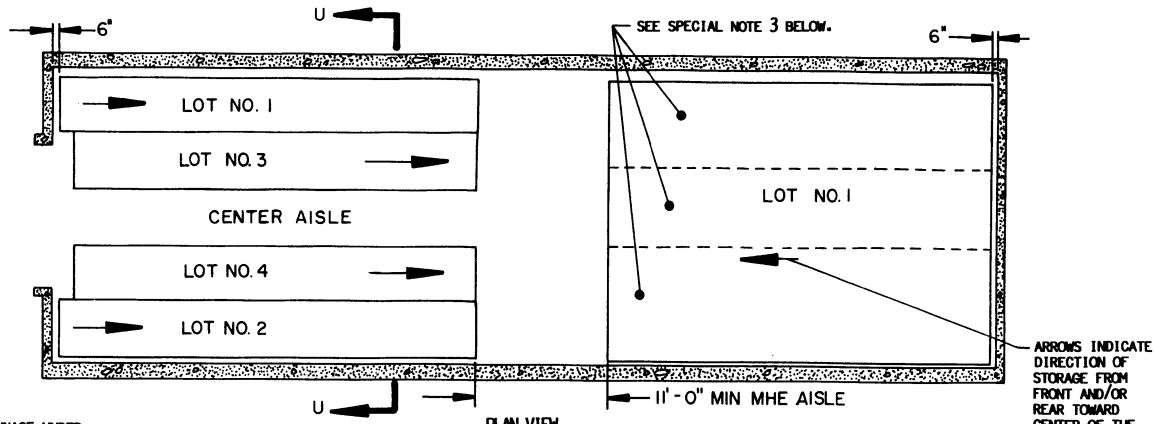
SPECIAL NOTES:

1. THE STORAGE PLANS AND CONFIGURATIONS SHOWN ON THIS PAGE ARE TYPICAL ONLY AND APPLY TO STORAGE OF NUMEROUS SMALL LOTS. ADAPTATIONS MAY BE MADE AS NUMBER AND SIZES OF LOTS TO BE STORED IN MAGAZINE REQUIRE.
2. AN INSPECTION/INVENTORY AISLE NOT LESS THAN 18" WIDE MUST BE PROVIDED AT ONE SIDE OF EACH "BURIED" LOT.
3. GENERALLY, THE LARGEST LOT SHOULD BE STORED IN THE REAR OF THE MAGAZINE. HOWEVER, THE REAR AREA MAY BE USED TO STORE MORE THAN ONE LOT BY ERECTING STACKS SIMILAR TO THOSE SHOWN IN THE FRONT OF THE MAGAZINE. AN MHE AISLE WILL BE REQUIRED ON ONE SIDE OF THE MAGAZINE, AND EACH LOT MUST BE ACCESSIBLE FOR REMOVAL AND INSPECTION/INVENTORY IN ACCORDANCE WITH OTHER CRITERIA SPECIFIED IN THESE SPECIAL NOTES AND IN THE GENERAL NOTES ON PAGE 2.
4. EACH LOT WITHIN THE MAGAZINE MUST BE ACCESSIBLE FOR MOVEMENT BY MHE. A SINGLE-LOT OF PALLET UNITS IS CONSIDERED "ACCESSIBLE" IF NO MORE THAN TWELVE (12) "LIFTS" OF ANOTHER LOT OR LOTS HAVE TO BE MADE TO GAIN ACCESS TO THAT LOT. THE TERM "LIFT" MEANS HANDLING AND MOVING NOT MORE THAN TWO (2) PALLET UNITS OF PROJECTILES AT ONE TIME.
5. FOR STORAGE OF MULTIPLE LOTS, THE DISTANCE FROM THE SIDEMALL WILL BE BASED ON THE OVERHEAD CLEARANCE REQUIRED FOR MHE.
6. EACH LOT MUST BE STORED TWO (2) UNITS (MINIMUM) WIDE TO ACCOMMODATE WIDTH OF MHE DURING OPERATIONS, EXCEPT FOR A ROW ADJACENT TO AN INSPECTION/INVENTORY AISLE.

(CONTINUED AT RIGHT)

(SPECIAL NOTES CONTINUED)

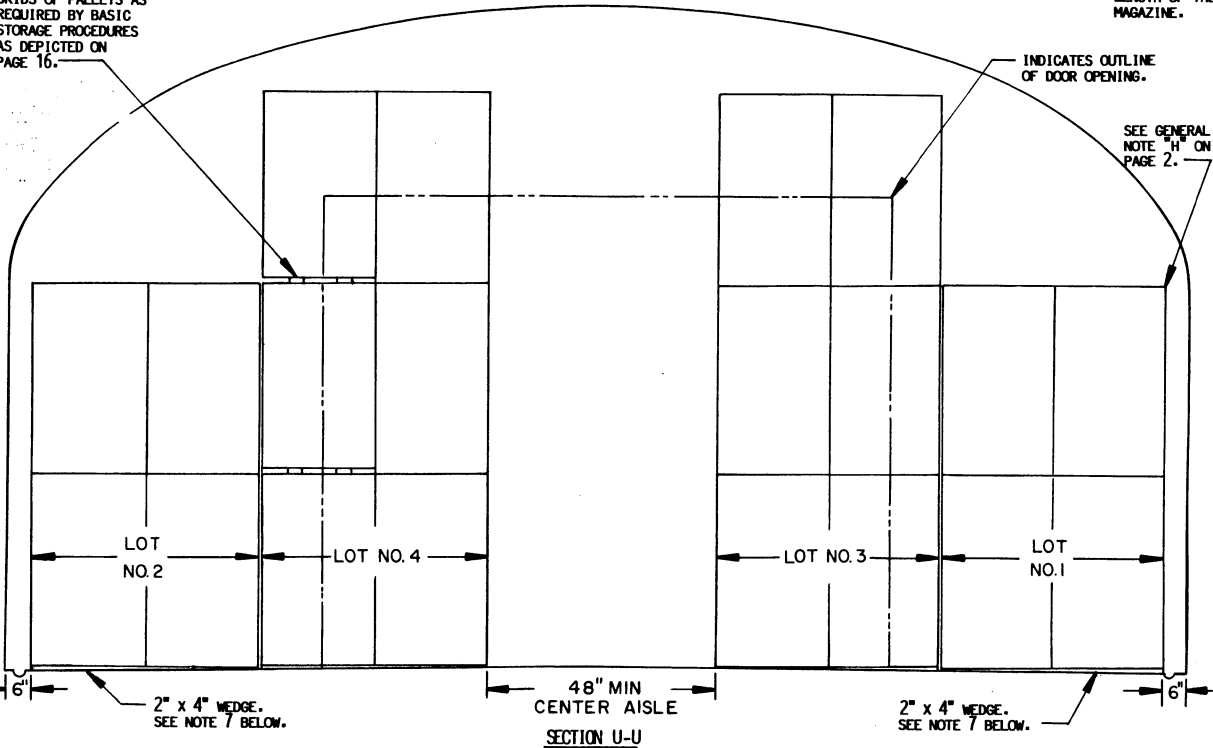
7. LENGTH OF 2" x 4" WEDGES WILL BE DETERMINED BY THE WIDTH OF THE LOT IN ROWS. WEDGES WILL NOT EXTEND INTO AISLE OR UNDER ADJACENT LOTS.
8. WHEN TWO LOTS ARE STORED ADJACENT TO EACH OTHER, THEY SHOULD BE SEPARATED BY AT LEAST 1" TO PROVIDE CLEARANCE FOR REMOVAL OF EITHER LOT.
9. AREAS ENCLOSED BY DOTTED LINES INDICATE LOCATIONS WHERE ADDITIONAL LOTS MAY BE STORED OR WHERE ADDITIONAL ITEMS MAY BE STORED, THAT ARE FROM THE LOT OR LOTS WHICH ARE DIRECTLY OR ALMOST DIRECTLY ACROSS THE CENTER AISLE ON THE OTHER SIDE OF THE MAGAZINE. COMPLIANCE WITH ALL OF THE MULTIPLE-LOT CRITERIA AS SET FORTH ON THIS PAGE MUST BE OBSERVED. THE SIZE OF THE LOTS BEING STORED AND THE CRITERIA OF SPECIAL NOTE 4, RELATIVE TO "12 LIFTS", WILL BE MAJOR FACTORS IMPACTING ON THE NUMBER OF UNIT LOADS THAT CAN BE STORED IN AN "ADDITIONAL STORAGE LOCATION". MORE OR FEWER STACKS THAN SHOWN MAY BE STORED AT ANY ONE OF THE ADDITIONAL STORAGE LOCATIONS. AN 11-FOOT MHE OPERATING AREA HAS BEEN SPECIFIED FOR ACCESS TO EACH "ADDITIONAL LOCATION" BY FORKLIFT TRUCK. THIS OPERATING AREA IS BASED ON REQUIREMENTS OF FORKLIFT TRUCKS COMMONLY USED IN STORAGE MAGAZINES. THE MHE OPERATING AREA CAN BE ENLARGED AS REQUIRED TO SUIT AVAILABLE FORKLIFT TRUCKS AND SHOULD BE MADE SMALLER IF AVAILABLE MHE PERMITS. A "CENTER AISLE" (SPACE BETWEEN STORAGE ON ONE SIDE OF A MAGAZINE AND AN "ADDITIONAL STORAGE LOCATION") IS TO BE AT LEAST 48 INCHES WIDE. AN AISLE SLIGHTLY WIDER THAN 48 INCHES WILL ENHANCE FORKLIFT TRUCK MOVEMENT WITHIN A MAGAZINE; HOWEVER, THIS AISLE SHOULD NOT BE MADE WIDER IF A LOSS IN STORAGE RESULTS.



2" x 4" DUNNAGE UNDER SKIDS OF PALLETS AS REQUIRED BY BASIC STORAGE PROCEDURES AS DEPICTED ON PAGE 16.

ARROWS INDICATE DIRECTION OF STORAGE FROM FRONT AND/OR REAR TOWARD CENTER OF THE LENGTH OF THE MAGAZINE.

PLAN VIEW



INDICATES OUTLINE OF DOOR OPENING.

SEE GENERAL NOTE "H" ON PAGE 2.

SECTION U-U

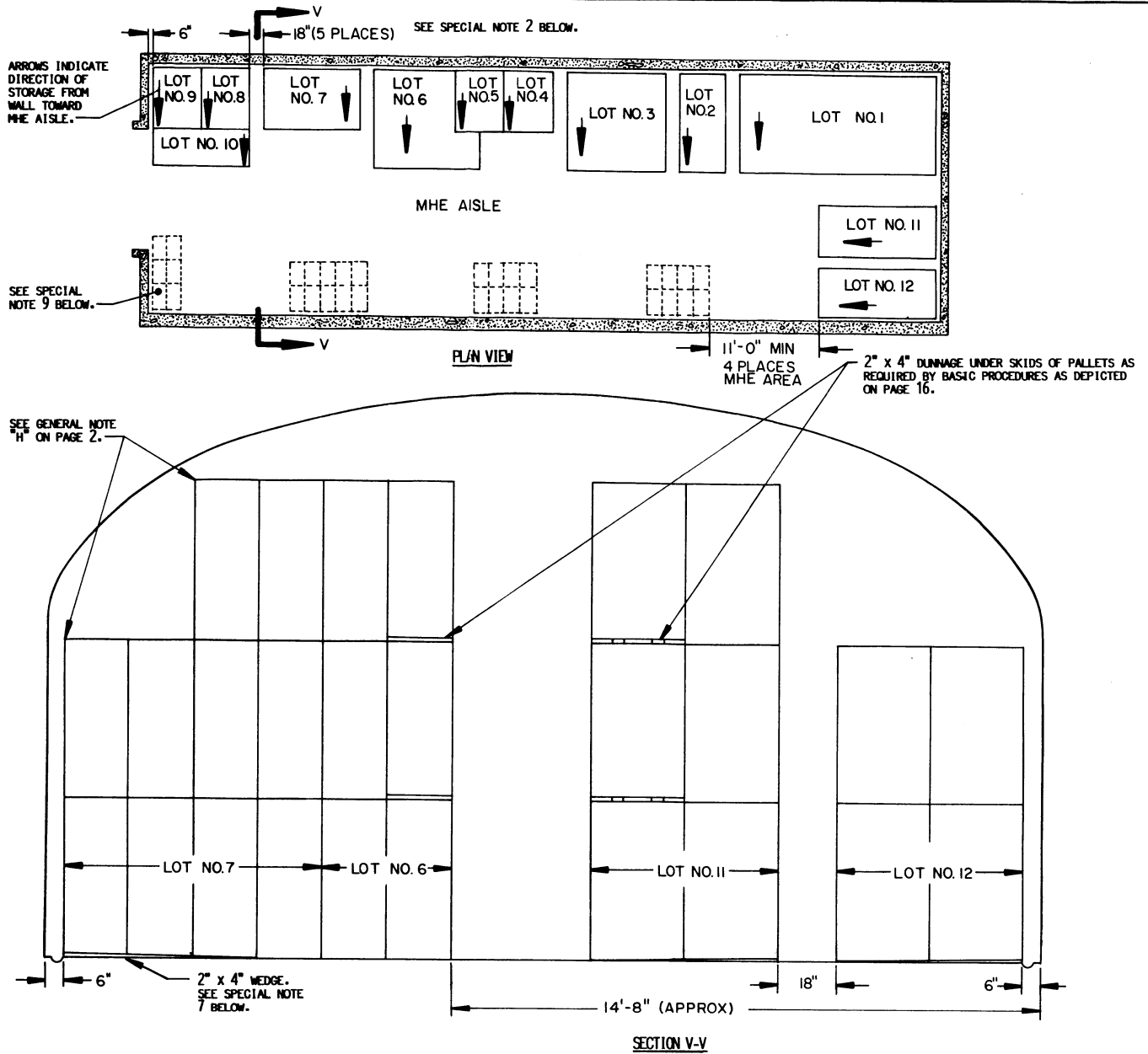
SPECIAL NOTES:

1. THE STORAGE PLANS AND CONFIGURATIONS SHOWN ON THIS PAGE ARE TYPICAL ONLY AND APPLY TO RELATIVELY LARGE LOTS. ADAPTATIONS MAY BE MADE AS NUMBER AND SIZES OF LOTS TO BE STORED IN MAGAZINE REQUIRE.
2. AN INSPECTION/INVENTORY AISLE MUST BE PROVIDED AT ONE SIDE OR END OF EACH LOT.
3. GENERALLY, THE LARGEST LOT SHOULD BE STORED IN THE REAR OF THE MAGAZINE. HOWEVER, THE REAR AREA MAY BE USED TO STORE MORE THAN ONE LOT BY ERECTING ROWS SIMILAR TO THOSE SHOWN IN THE FRONT OF THE MAGAZINE. A CENTER AISLE WILL NOT BE REQUIRED IN THE REAR AREA AS LONG AS EACH LOT IS ACCESSIBLE FOR REMOVAL AND INSPECTION/INVENTORY IN ACCORDANCE WITH OTHER CRITERIA SPECIFIED IN THESE SPECIAL NOTES AND IN THE GENERAL NOTES ON PAGE 2.
4. EACH LOT WITHIN THE MAGAZINE MUST BE ACCESSIBLE FOR MOVEMENT BY MHE. A SINGLE-LOT OF PALLET UNITS IS CONSIDERED "ACCESSIBLE" IF NO MORE THAN TWELVE (12) "LIFTS" OF ANOTHER LOT OR LOTS HAVE TO BE MADE TO GAIN ACCESS TO THAT LOT. THE TERM "LIFT" MEANS HANDLING AND MOVING NOT MORE THAN TWO (2) PALLET UNITS OF PROJECTILES AT ONE TIME.
5. FOR STORAGE OF MULTIPLE LOTS, THE DISTANCE FROM THE SIDEWALL WILL BE BASED ON THE OVERHEAD CLEARANCE REQUIRED FOR MHE.
6. EACH LOT MUST BE STORED TWO (2) UNITS (MINIMUM) WIDE TO ACCOMMODATE WIDTH OF MHE DURING OPERATIONS, EXCEPT FOR A ROW ADJACENT TO A CENTER AISLE.

(CONTINUED AT RIGHT)

(SPECIAL NOTES CONTINUED)

7. LENGTH OF 2" x 4" WEDGES WILL BE DETERMINED BY THE WIDTH OF THE LOT IN ROWS. WEDGES WILL NOT EXTEND INTO AISLES OR UNDER ADJACENT LOTS.
8. WHEN TWO LOTS ARE STORED ADJACENT TO EACH OTHER, THEY SHOULD BE SEPARATED BY AT LEAST 1" TO PROVIDE CLEARANCE FOR REMOVAL OF EITHER LOT.



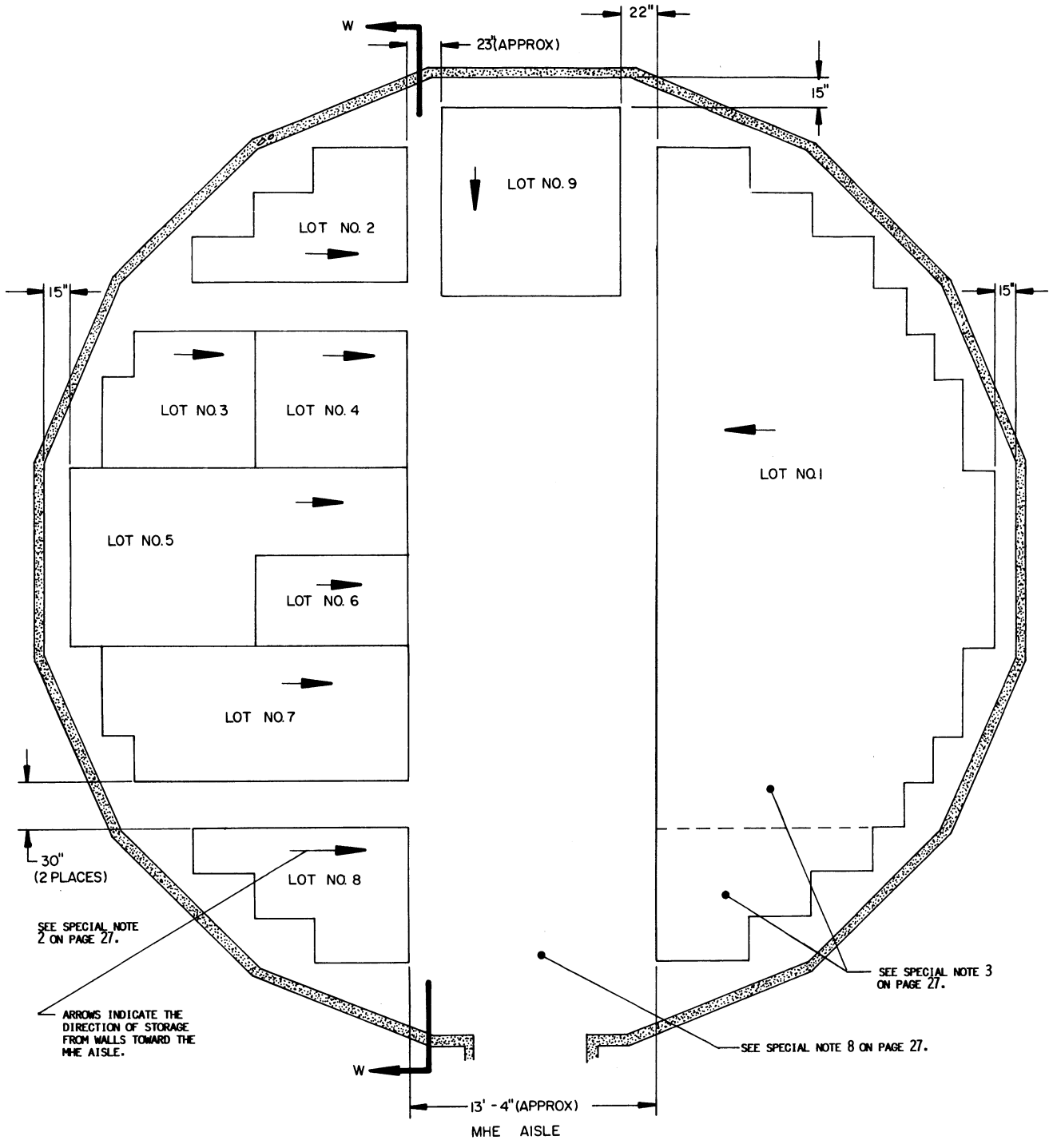
SPECIAL NOTES:

1. THE STORAGE PLANS AND CONFIGURATIONS SHOWN ON THIS PAGE ARE TYPICAL ONLY AND APPLY TO STORAGE OF NUMEROUS SMALL LOTS. ADAPTATIONS MAY BE MADE AS NUMBER AND SIZES OF LOTS TO BE STORED IN MAGAZINE REQUIRE.
2. AN INSPECTION/INVENTORY AISLE NOT LESS THAN 18" WIDE MUST BE PROVIDED AT ONE SIDE OF EACH "BURIED" LOT.
3. GENERALLY, THE LARGEST LOT SHOULD BE STORED IN THE REAR OF THE MAGAZINE. HOWEVER, THE REAR AREA MAY BE USED TO STORE MORE THAN ONE LOT BY ERECTING STACKS SIMILAR TO THOSE SHOWN IN THE FRONT OF THE MAGAZINE. AN MHE AISLE WILL BE REQUIRED ON ONE SIDE OF THE MAGAZINE, AND EACH LOT MUST BE ACCESSIBLE FOR REMOVAL AND INSPECTION/INVENTORY IN ACCORDANCE WITH OTHER CRITERIA SPECIFIED IN THESE SPECIAL NOTES AND IN THE GENERAL NOTES ON PAGE 2.
4. EACH LOT WITHIN THE MAGAZINE MUST BE ACCESSIBLE FOR MOVEMENT BY MHE. A SINGLE LOT OF PALLET UNITS IS CONSIDERED "ACCESSIBLE" IF NO MORE THAN TWELVE (12) "LIFTS" OF ANOTHER LOT OR LOTS HAVE TO BE MADE TO GAIN ACCESS TO THAT LOT. THE TERM "LIFT" MEANS HANDLING AND MOVING NOT MORE THAN TWO (2) PALLET UNITS OF PROJECTILES AT ONE TIME.
5. FOR STORAGE OF MULTIPLE LOTS, THE DISTANCE FROM THE SIDEWALL WILL BE BASED ON THE OVERHEAD CLEARANCE REQUIRED FOR MHE.

(CONTINUED AT RIGHT)

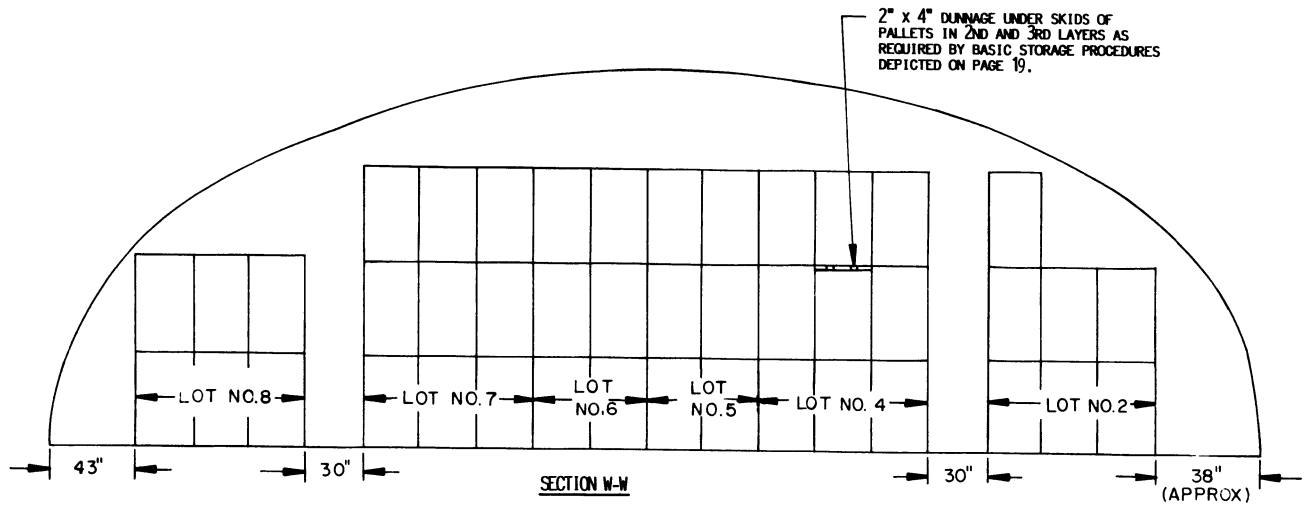
(SPECIAL NOTES CONTINUED)

6. EACH LOT MUST BE STORED TWO (2) UNITS (MINIMUM) WIDE TO ACCOMMODATE WIDTH OF MHE DURING OPERATIONS, EXCEPT FOR A ROW ADJACENT TO AN INSPECTION/INVENTORY AISLE.
7. LENGTH OF 2" x 4" WEDGES WILL BE DETERMINED BY THE WIDTH OF THE LOT IN ROWS. WEDGES WILL NOT EXTEND INTO AISLE OR UNDER ADJACENT LOTS.
8. WHEN TWO LOTS ARE STORED ADJACENT TO EACH OTHER, THEY SHOULD BE SEPARATED BY AT LEAST 1" TO PROVIDE CLEARANCE FOR REMOVAL OF EITHER LOT.
9. AREA ENCLOSED BY DOTTED LINES INDICATE LOCATIONS WHERE ADDITIONAL LOTS MAY BE STORED OR WHERE ADDITIONAL ITEMS MAY BE STORED, THAT ARE FROM THE LOT OR LOTS WHICH ARE DIRECTLY OR ALMOST DIRECTLY ACROSS THE CENTER AISLE ON THE OTHER SIDE OF THE MAGAZINE. COMPLIANCE WITH ALL OF THE MULTIPLE-LOT CRITERIA AS SET FORTH ON THIS PAGE MUST BE OBSERVED. THE SIZE OF THE LOTS BEING STORED AND THE CRITERIA OF SPECIAL NOTE 4, RELATIVE TO "12 LIFTS", WILL BE MAJOR FACTORS IMPACTING ON THE NUMBER OF UNIT LOADS THAT CAN BE STORED IN ANY "ADDITIONAL STORAGE LOCATION". MORE OR FEWER STACKS THAN SHOWN MAY BE STORED AT ANY ONE OF THE ADDITIONAL STORAGE LOCATIONS. AN 11-FOOT MHE OPERATING AREA HAS BEEN SPECIFIED FOR ACCESS TO EACH "ADDITIONAL LOCATION" BY FORKLIFT TRUCK. THIS OPERATING AREA IS BASED ON REQUIREMENTS OF FORKLIFT TRUCKS COMMONLY USED IN STORAGE MAGAZINES. THE MHE OPERATING AREA CAN BE ENLARGED AS REQUIRED TO SUIT AVAILABLE FORKLIFT TRUCKS, AND SHOULD BE MADE SMALLER IF AVAILABLE MHE PERMITS. A "CENTER AISLE" (SPACE BETWEEN STORAGE ON ONE SIDE OF A MAGAZINE AND AN "ADDITIONAL STORAGE LOCATION") IS TO BE AT LEAST 48 INCHES WIDE. AN AISLE SLIGHTLY WIDER THAN 48 INCHES WILL ENHANCE FORKLIFT TRUCK MOVEMENT WITHIN A MAGAZINE. HOWEVER, THIS AISLE SHOULD NOT BE MADE WIDER IF A LOSS IN STORAGE RESULTS.



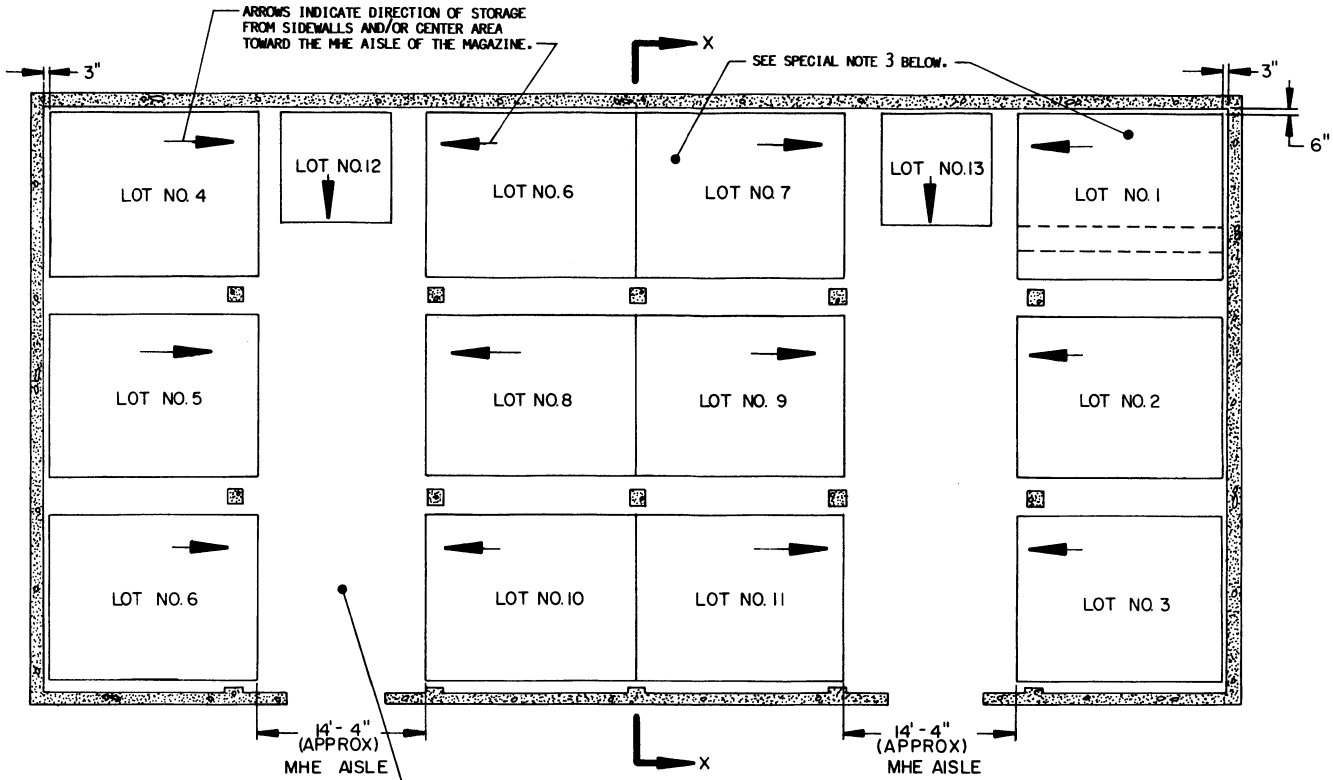
PLAN VIEW

TYPICAL MULTIPLE-LOT STORAGE IN CORBETTA TYPE MAGAZINE

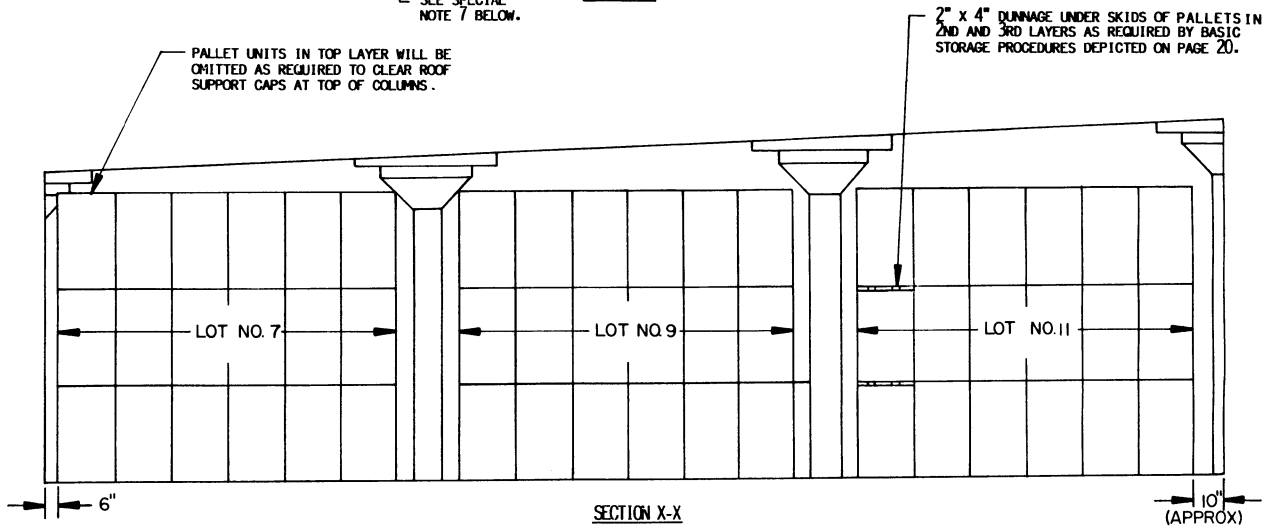


SPECIAL NOTES:

1. THE STORAGE PLANS SHOWN ARE TYPICAL ONLY. ADAPTATIONS MAY BE MADE AS NUMBER AND SIZES OF LOTS TO BE STORED IN MAGAZINE REQUIRE.
2. AN INSPECTION/INVENTORY AISLE NOT LESS THAN 18" WIDE MUST BE PROVIDED AT ONE SIDE OF EACH "BURIED" LOT.
3. GENERALLY, THE LARGEST LOT SHOULD BE STORED ON ONE SIDE OF THE MAGAZINE. HOWEVER, BOTH SIDES MAY BE USED TO STORE MORE THAN ONE LOT BY ERECTING ROWS SIMILAR TO THOSE SHOWN ON THE LEFT SIDE. EACH ADDITIONAL LOT MUST BE ACCESSIBLE FOR REMOVAL AND INSPECTION/INVENTORY IN ACCORDANCE WITH OTHER CRITERIA SPECIFIED IN THESE SPECIAL NOTES AND IN THE GENERAL NOTES ON PAGE 2.
4. EACH LOT WITHIN THE MAGAZINE MUST BE ACCESSIBLE FOR MOVEMENT BY MHE. A SINGLE LOT OF PALLET UNITS IS CONSIDERED "ACCESSIBLE" IF NO MORE THAN TWELVE (12) "LIFTS" OF ANOTHER LOT OR LOTS HAVE TO BE MADE TO GAIN ACCESS TO THAT LOT. THE TERM "LIFT" MEANS HANDLING AND MOVING NOT MORE THAN TWO (2) PALLET UNITS OF PROJECTILES AT ONE TIME.
5. FOR STORAGE OF MULTIPLE LOTS, THE DISTANCE FROM THE WALL WILL BE BASED ON THE OVERHEAD CLEARANCE REQUIRED FOR MHE.
6. EACH LOT MUST BE STORED TWO (2) UNITS (MINIMUM) WIDE TO ACCOMMODATE WIDTH OF MHE DURING OPERATIONS, EXCEPT FOR A ROW ADJACENT TO AN INSPECTION/INVENTORY AISLE.
7. WHEN TWO LOTS ARE STORED ADJACENT TO EACH OTHER, THEY SHOULD BE SEPARATED BY AT LEAST 1" TO PROVIDE CLEARANCE FOR REMOVAL OF EITHER LOT.
8. THE MHE AISLE MAY BE USED TO STORE ONE OR MORE STACKS OF ADDITIONAL LOTS OR ADDITIONAL ITEMS THAT ARE FROM A LOT ADJACENT TO THE MHE AISLE. THIS ADDITIONAL STORAGE IS TO BE ARRANGED IN A MANNER SIMILAR TO ARRANGEMENTS DEPICTED ON PAGES 23 AND 25 FOR THE "ADDITIONAL STORAGE LOCATIONS" (SHOWN BY DOTTED LINES). ADEQUATE SPACE FOR MHE OPERATION, AS DESCRIBED ON PAGES 23 AND 25 MUST BE MADE AVAILABLE FOR THE ADDITIONAL STORAGE. ALSO, COMPLIANCE WITH ALL OF THE MULTIPLE-LOT CRITERIA AS SET FORTH ON THIS PAGE MUST BE OBSERVED.



PLAN VIEW



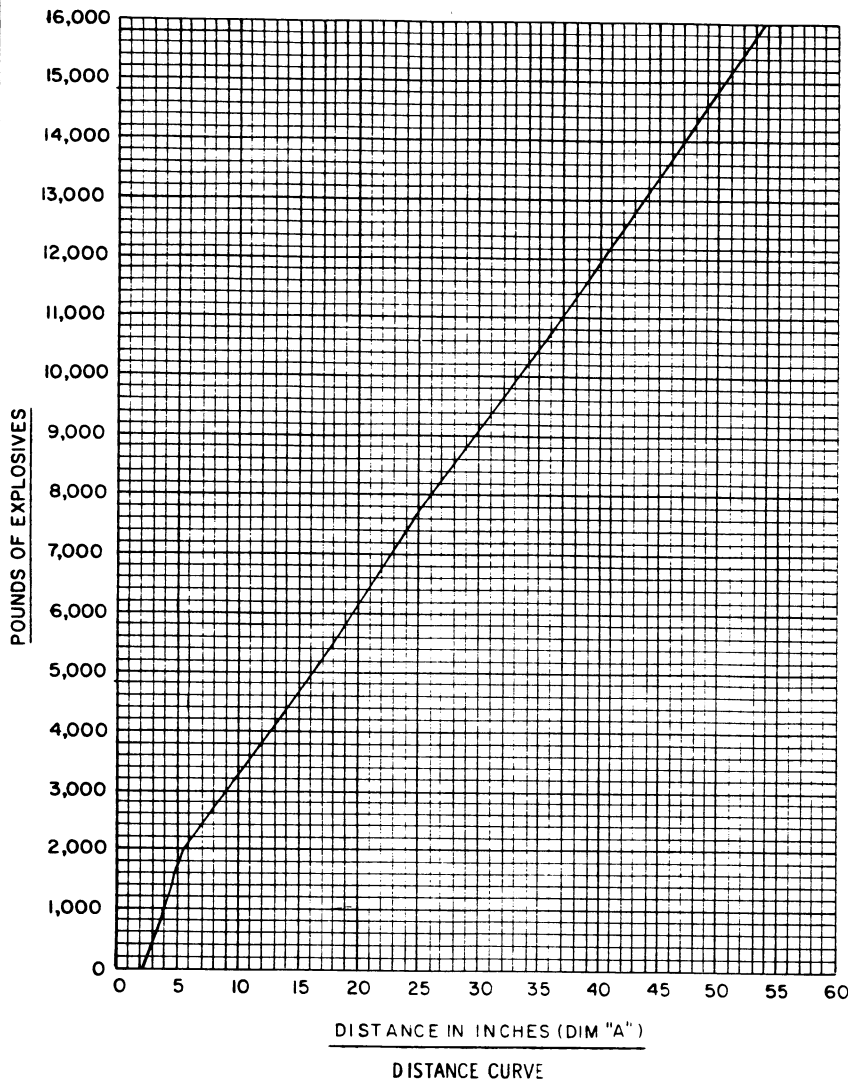
SECTION X-X

SPECIAL NOTES:

1. THE STORAGE PLANS SHOWN ARE TYPICAL ONLY. ADAPTATIONS MAY BE MADE AS NUMBER AND SIZES OF LOTS TO BE STORED IN MAGAZINE REQUIRE.
2. AN INSPECTION/INVENTORY AISLE NOT LESS THAN 18" WIDE MUST BE PROVIDED AT ONE SIDE OF EACH "BURIED" LOT.
3. GENERALLY, THE LARGEST LOT SHOULD BE STORED IN THE REAR OR ON ONE SIDE OF THE MAGAZINE. HOWEVER, THESE AREAS MAY BE USED TO STORE MORE THAN ONE LOT BY ERECTING ROWS SIMILAR TO THOSE TYPICALLY INDICATED BY DOTTED LINES. EACH ADDITIONAL LOT MUST BE ACCESSIBLE FOR REMOVAL AND INSPECTION/INVENTORY IN ACCORDANCE WITH OTHER CRITERIA SPECIFIED IN THESE SPECIAL NOTES AND IN THE GENERAL NOTES ON PAGE 2.
4. EACH LOT WITHIN THE MAGAZINE MUST BE ACCESSIBLE FOR MOVEMENT BY MHE. A SINGLE LOT OF PALLET UNITS IS CONSIDERED "ACCESSIBLE" IF NO MORE THAN TWENTY-FOUR (24) "LIFTS" OF ANOTHER LOT OR LOTS HAVE TO BE MADE TO GAIN ACCESS TO THAT LOT. THE TERM "LIFT" MEANS HANDLING AND MOVING NOT MORE THAN TWO (2) PALLET UNITS OF PROJECTILES AT ONE TIME.
5. WHEN TWO LOTS ARE STORED ADJACENT TO EACH OTHER, THEY SHOULD BE SEPARATED BY AT LEAST 1" TO PROVIDE CLEARANCE FOR REMOVAL OF EITHER LOT.

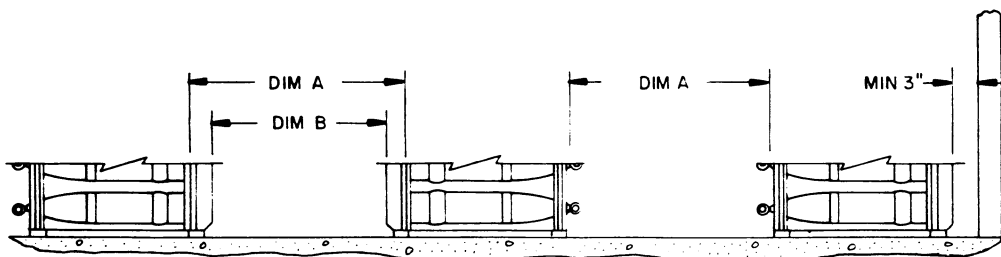
(SPECIAL NOTES CONTINUED)

6. EACH LOT MUST BE STORED TWO (2) UNITS (MINIMUM) WIDE TO ACCOMMODATE WIDTH OF MHE DURING OPERATIONS, EXCEPT FOR A ROW ADJACENT TO AN INSPECTION/INVENTORY AISLE.
7. THE MHE AISLE MAY BE USED TO STORE ONE OR MORE STACKS OF ADDITIONAL LOTS OR ADDITIONAL ITEMS THAT ARE FROM A LOT ADJACENT TO THE MHE AISLE. THIS ADDITIONAL STORAGE IS TO BE ARRANGED IN A MANNER SIMILAR TO ARRANGEMENTS DEPICTED ON PAGES 23 AND 25 FOR THE "ADDITIONAL STORAGE LOCATIONS" (SHOWN BY DOTTED LINES). ADEQUATE SPACE FOR MHE OPERATION, AS DESCRIBED ON PAGES 23 AND 25, MUST BE MADE AVAILABLE FOR THE ADDITIONAL STORAGE. ALSO, COMPLIANCE WITH ALL OF THE MULTIPLE-LOT CRITERIA AS SET FORTH ON THIS PAGE MUST BE OBSERVED.



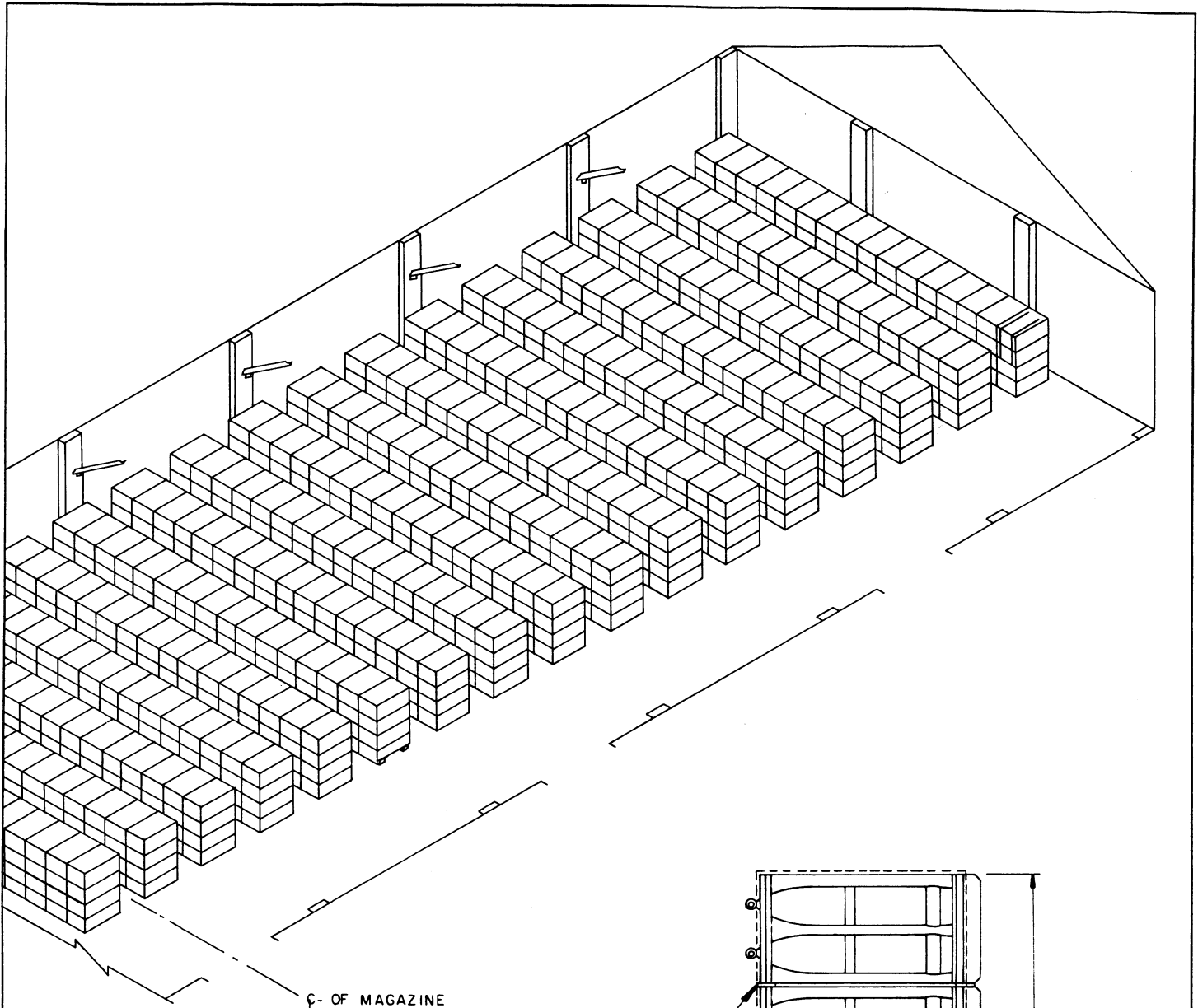
SPECIAL NOTES:

1. THE DEPICTED "DISTANCE CURVE" AND THE "METHOD OF MEASURING NOSE TO NOSE AND BASE TO BASE DISTANCE" ARE REQUIRED TO BE USED FOR THE STORAGE OF PROJECTILE PALLET UNITS IN STANDARD ABOVE-GROUND MAGAZINES AS FURTHER DELINEATED ON PAGES 30 AND 31.
2. ALL SEPARATE LOADING PROJECTILES WILL BE STORED NOSE TO NOSE AND BASE TO BASE THROUGHOUT THE MAGAZINE. FOR SPECIAL HANDLING EQUIPMENT REQUIRED, SEE GENERAL NOTE "K" ON PAGE 2.
3. THE DISTANCE CURVE DESIGNATES THE AISLE SPACING (DIM A BELOW) TO BE PROVIDED BETWEEN STACKS OF PROJECTILES. SIZE OF AISLE IS DETERMINED BY THE POUNDS OF EXPLOSIVE CONTAINED WITHIN A STACK. NOSE TO NOSE AND BASE TO BASE DIMENSIONS MUST NOT BE DECREASED UNDER ANY CONDITIONS.
4. CATEGORY (18) CLASS 1.2 AMMUNITION STORED IN ABOVE-GROUND MAGAZINES WILL BE PLACED IN STACKS OF NOT MORE THAN 15,000 POUNDS OF EXPLOSIVE EACH.
5. **NOTE:** STORAGE OF SOME SPECIFIC TYPES OF SEPARATE LOADING PROJECTILES MUST ALSO COMPLY WITH DIRECTIVES AND REGULATORY REQUIREMENTS OTHER THAN AS SPECIFIED HEREIN.
6. NOSE TO NOSE AND BASE TO BASE QUANTITY DISTANCE CURVE SHOWN IS BASED ON ABERDEEN TESTS, AND IS DESIGNED TO LIMIT EXPLOSIONS TO ONE STACK IF PROJECTILES ARE STACKED ALLOWING AISLE SPACING AS SHOWN ON CURVE.
7. MULTIPLE LOTS OF ITEMS MAY BE STORED IN A MAGAZINE. ALSO, MORE THAN ONE LOT OF ITEMS MAY BE STORED WITHIN A STACK; HOWEVER, ITEMS OF ONE LOT WILL NOT BE STACKED ON TOP OF ITEMS FROM ANOTHER LOT. ADDITIONALLY, AN MHE OPERATING AISLE MUST BE PROVIDED, AS REQUIRED, TO PERMIT ACCESS TO ANY LOT. LOTS SHOULD BE SEPARATED BY A 3" MINIMUM SPACE. DUNNAGE MATERIAL USED FOR ONE LOT WILL NOT EXTEND UNDER ITEMS OF AN ADJACENT LOT.
8. PALLET UNITS WILL NOT BE STACKED MORE THAN FOUR (4) UNITS HIGH WHEN PROJECTILES ARE IN THE HORIZONTAL POSITION.



METHOD OF MEASURING NOSE TO NOSE & BASE TO BASE DISTANCE

DIM A WILL BE THE DISTANCE IN INCHES AS DETERMINED FROM THE DISTANCE CURVE SHOWN ABOVE. SEE SPECIAL NOTE 3 ABOVE. DIM B EQUALS DIM A MINUS 10", BASED ON PALLET UNITS HAVING 3-5/8" HIGH SKIDS AND 1-3/8" THICK STRINGERS.



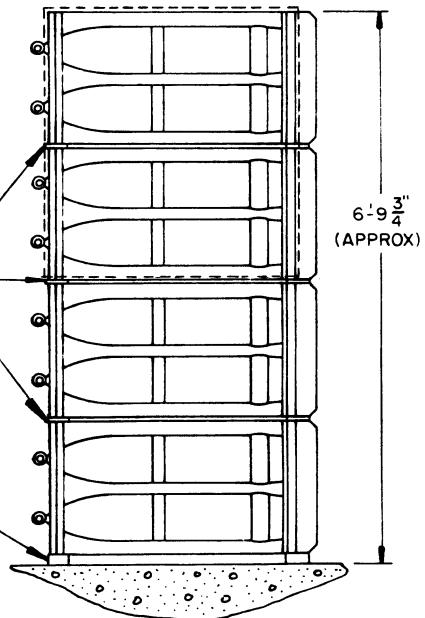
ISOMETRIC VIEW

ONE-HALF OF A STANDARD MAGAZINE SHOWN.

C- OF MAGAZINE

1" X 4" MATERIAL.

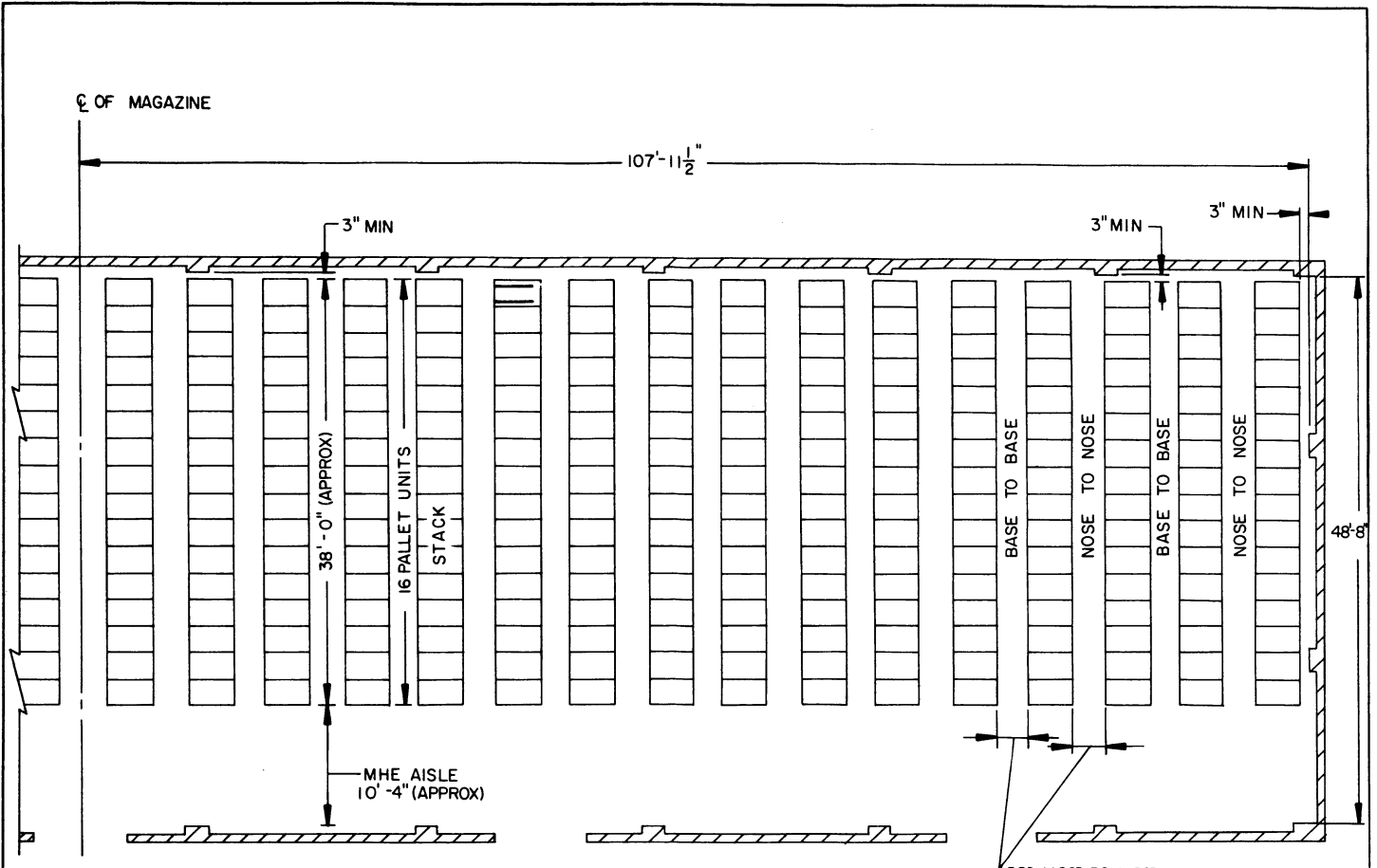
2" X 4" MATERIAL,
RANDOM LENGTHS.



6'-9 ³/₄"
(APPROX)

END VIEW OF STACK

SEE GENERAL NOTE "K" ON PAGE 2.



PLAN VIEW

ONE-HALF OF A STANDARD MAGAZINE SHOWN.

FOR NOSE TO NOSE AND BASE TO BASE DISTANCE REQUIREMENTS, SEE PAGE 29.

FOR "GENERAL NOTES" AND "MATERIAL SPECIFICATIONS", SEE PAGE 2.

STORAGE AS SHOWN

ONE-HALF OF STANDARD MAGAZINE

ITEM	QUANTITY
PALLET UNITS (64/STACK) -----	1.024
PROJECTILES (6/PALLET)-----	6.144

SPECIAL NOTES:

1. RANDOM LENGTHS MAY BE USED FOR FLOOR AND INTERMEDIATE DUNNAGE. HOWEVER, FOR THE INTERMEDIATE DUNNAGE, 54" LONG PIECES WILL ENHANCE STORAGE OPERATIONS. CAUTION: BASED ON HANDLING TWO PALLET PER LIFT, NOT MORE THAN TWO PIECES CAN BE USED TO MAKE A 54" LONG PIECE, AND THESE PIECES CANNOT BE OF EQUAL LENGTH (.27"). THE SHORTEST OF THE TWO PIECES CAN RANGE IN LENGTH FROM 16-1/2" TO 24". IF TWO PIECES ARE USED TO FORM BOTH 54" LONG PIECES OF INTERMEDIATE DUNNAGE UNDER ONE "SET" OF TWO PALLET, THE JOINTS WITHIN THESE PIECES ARE TO BE STAGGERED.
2. THE STORAGE AS SHOWN IS BASED ON HANDLING TWO PALLET UNITS PER LIFT. STORAGE CAN BE ACCOMPLISHED BY HANDLING ONE PALLET UNIT PER LIFT. HOWEVER, DUE TO STACK STABILITY REQUIREMENTS, RANDOM LENGTH INTERMEDIATE DUNNAGE IS NOT PERMITTED AND THE MINIMUM LENGTH FOR INTERMEDIATE DUNNAGE PIECES IS 27" (APPROXIMATELY EQUAL TO DIMENSION OF ONE PALLET UNIT).

BILL OF MATERIAL (PER STACK)

LUMBER	* LINEAR FEET	BOARD FEET
1" X 4"	228.00	76.00
2" X 4"	76.00	50.67

* RANDOM LENGTHS MAY BE USED. SEE SPECIAL NOTES ON THIS PAGE FOR ADDITIONAL GUIDANCE.

