

STORAGE IN 60' & 80' IGLOO AND 80' STRADLEY MAGAZINES OF CBU ITEMS PACKED IN TWIN PACK CONTAINER

INDEX

<u>ITEM</u>	<u>PAGE(S)</u>
GENERAL NOTES, AND MATERIAL SPECIFICATIONS-----	3
IGLOO STORAGE PROCEDURES-----	2,3
STRADLEY STORAGE PROCEDURES-----	4,5
ALTERNATIVE IGLOO STORAGE PROCEDURES-----	6,7
ALTERNATIVE STRADLEY STORAGE PROCEDURES-----	8,9
DETAILS-----	10

THIS DRAWING, INCLUDING REVISION 1, SUPERSEDES
DRAWING NO. 19-48-4080-1-14A1002, DATED JULY 1969.

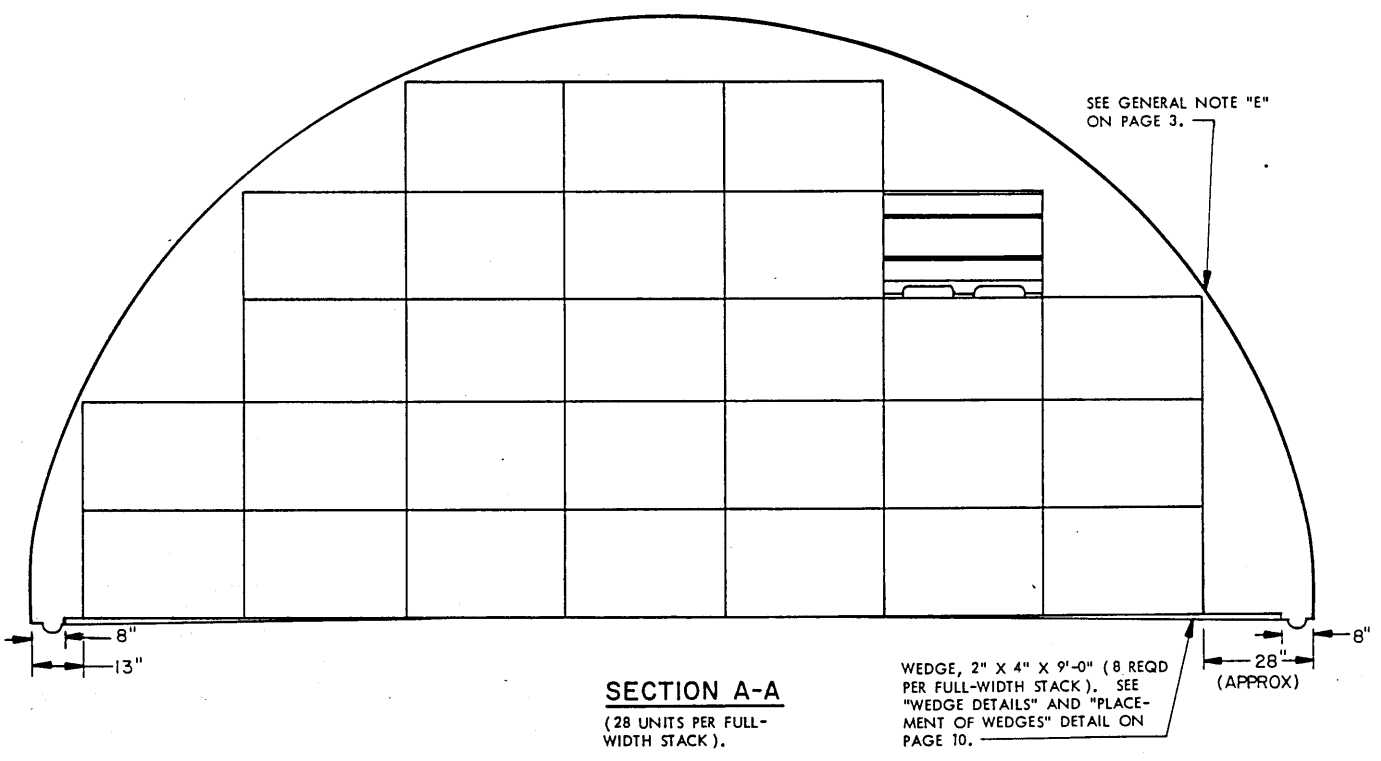
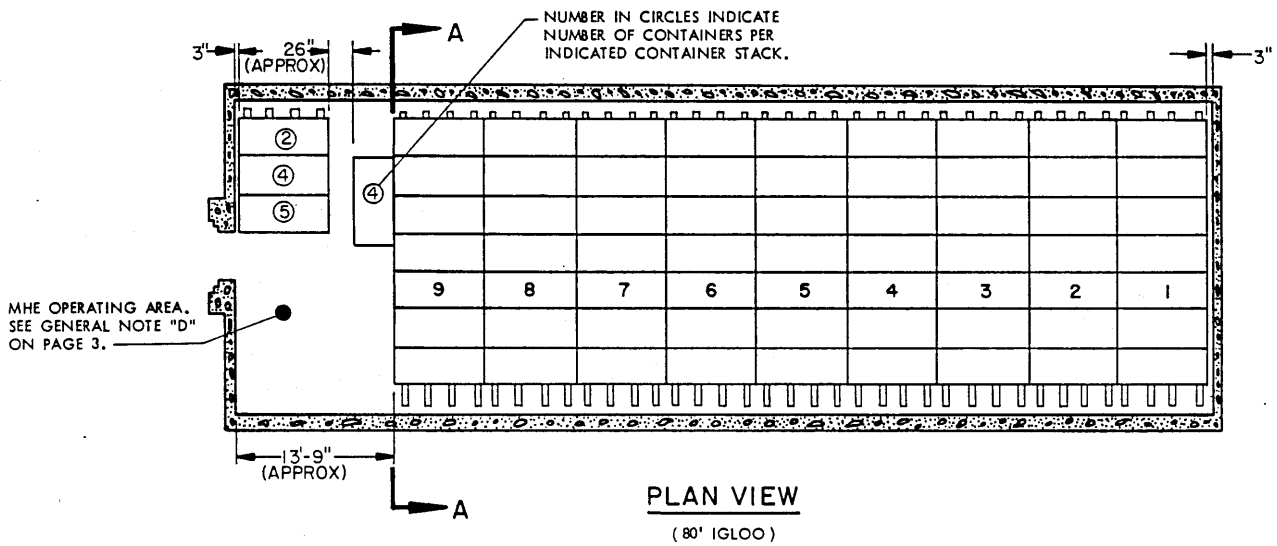
REVISIONS				DRAFTSMAN	PROJ. ENG.
				PBB/mbr	JNW/gnw
				CHECKER	LOC. ENGINEER OFFICE
				RH/RSH	JNW/gnw
1	JUL 76	JNW 40	Edward Chodera A. Ehinger	APPROVED, U.S. ARMY ARMAMENT COMMAND	
				APPROVED BY ORDER OF COMMANDING GENERAL, U.S. ARMY MATERIEL DEVELOPMENT AND READINESS COMMAND (DARCOM)	
				DARCOM AMMO CENTER	
				U.S. ARMY DARCOM DRAWING	
				JULY 1976	
				CLASS	DIVISION
				19	48
				DRAWING	FILE
				4080	I-14A 1002

DO NOT SCALE

STORAGE AS SHOWN

80' IGLOO

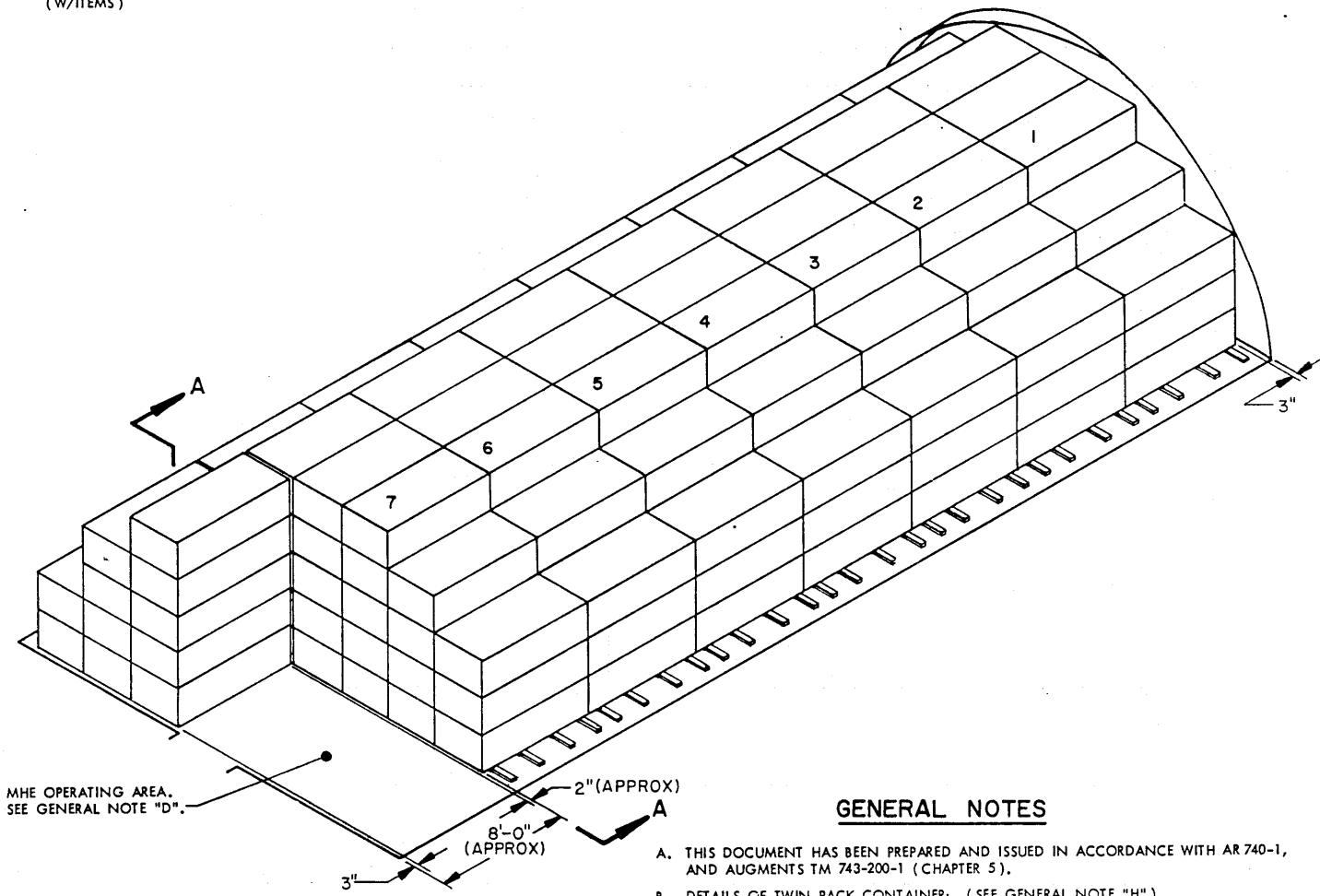
ITEM	QUANTITY
TWIN PACK CONTAINER (W/ITEMS)	----- 268



STORAGE AS SHOWN

60' IGLOO

ITEM	QUANTITY
TWIN PACK CONTAINER ----- 207 (W/ITEMS)	



MHE OPERATING AREA. SEE GENERAL NOTE "D".

ISOMETRIC VIEW
(60' IGLOO)

BILL OF MATERIAL (PER STACK)		
TYPE STACK	WEDGE SIZE	NO. REQD
FULL-WIDTH	2" X 4" X 9'-0"	8
FRONTAL, LENGTHWISE	2" X 4" X 9'-0"	4
FRONTAL, CROSSWISE	(NONE REQUIRED)	

MATERIAL SPECIFICATIONS

LUMBER: SEE TM 743-200-1, DUNNAGE LUMBER; FED SPEC MM-L-751.

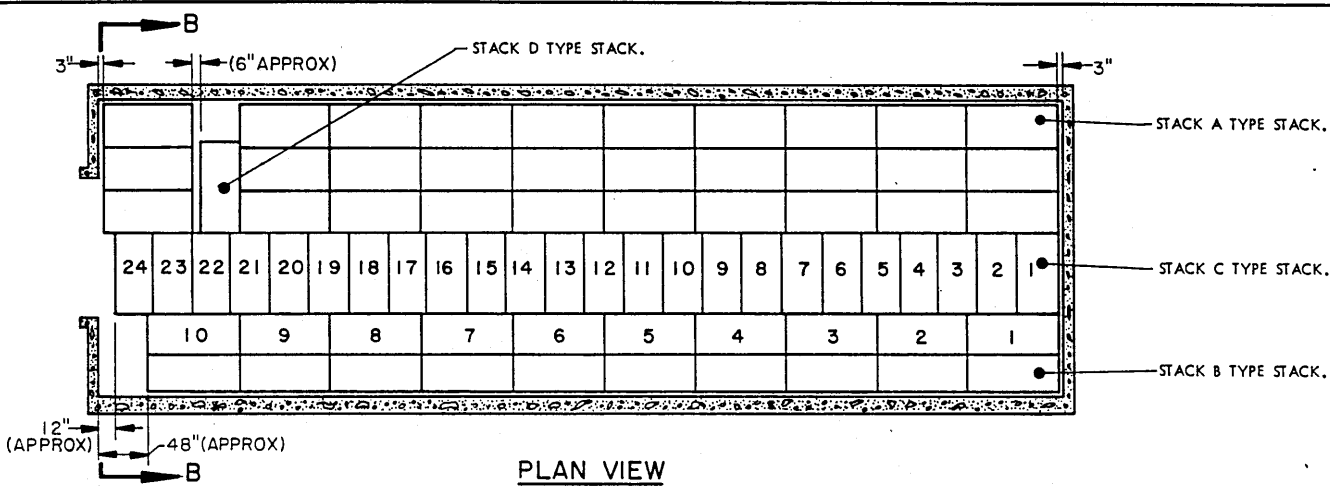
REVISIONS

REVISION NO. 1, DATED JULY 1976, CONSISTS OF:

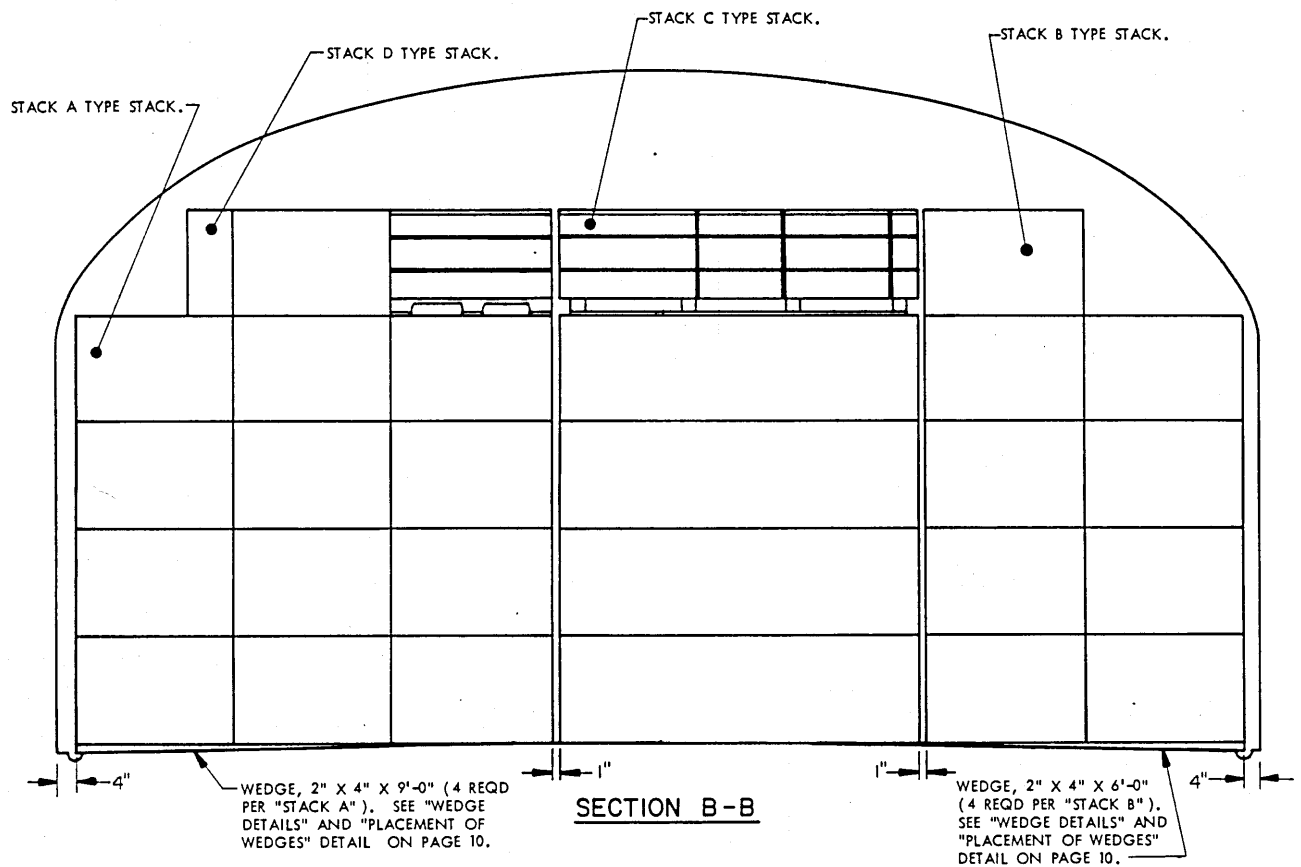
1. ADDING ALTERNATIVE STORAGE PROCEDURES.
2. UPDATING THE GENERAL NOTES.

GENERAL NOTES

- A. THIS DOCUMENT HAS BEEN PREPARED AND ISSUED IN ACCORDANCE WITH AR 740-1, AND AUGMENTS TM 743-200-1 (CHAPTER 5).
- B. DETAILS OF TWIN PACK CONTAINER: (SEE GENERAL NOTE "H")
CONTAINER DIMENSIONS ----- 89-3/8" LONG X 39" WIDE X 27" HIGH.
GROSS WEIGHT ----- 1,855 POUNDS MAXIMUM (APPROX).
- C. MATERIALS HANDLING EQUIPMENT (MHE) OPERATING AREAS SHOWN HEREIN MAY BE ADJUSTED TO SUIT LOCAL CONDITIONS AND/OR AVAILABLE MHE.
- D. IF THE AVAILABLE MHE PERMITS, ADDITIONAL CONTAINERS MAY BE STORED WITHIN THE FRONTAL AREA OF A MAGAZINE.
- E. STORED CONTAINERS MUST NOT CONTACT THE WALL OF A MAGAZINE. TO PROVIDE FOR THIS MANDATORY CLEARANCE REQUIREMENT IN IGLOO MAGAZINES, A TOP-UNIT MAY BE ELIMINATED FROM ONE SIDE OF THE DEPICTED STACKS AND THE PATTERN SHIFTED AS NECESSARY TOWARD THAT SIDE.
- F. CAUTION: CONTAINERS MUST NOT BE STACKED MORE THAN FIVE (5) CONTAINERS HIGH.
- G. CAUTION: THE ALLOWABLE "EXPLOSIVE LIMIT" ESTABLISHED FOR A MAGAZINE IS NOT TO BE EXCEEDED. DEPENDING ON THE ITEM BEING STORED, THIS LIMITATION MAY REQUIRE A QUANTITY REDUCTION FROM THE STORAGE AS SHOWN.
- H. STORAGE AS SHOWN IS BASED ON THE 27" HIGH WIREBOUND, WRAP-AROUND TWIN PACK CONTAINER. THE SPECIFIED STORAGE PROCEDURES ARE ALSO APPLICABLE TO THE PLYWOOD TWIN PACK CONTAINERS WHICH ARE SLIGHTLY LESS IN HEIGHT, APPROXIMATELY 1-3/4".
- J. THE STORAGE METHODS SHOWN ON PAGES 2 THRU 5 ARE PREFERRED TO OBTAIN MAXIMUM STORAGE DENSITY. HOWEVER, IF AVAILABLE MHE DOES NOT PERMIT END HANDLING OF THE CONTAINERS, THE CONTAINERS MAY BE STORED IN ACCORDANCE WITH THE ALTERNATIVE PROCEDURES DEPICTED ON PAGES 6 THRU 9 WHICH PROVIDE FOR SIDE HANDLING OF THE CONTAINERS.
- K. NOTICE: APPROXIMATELY ONE INCH (1") CLEARANCE IS REQUIRED BETWEEN STACKED UNITS, AS SHOWN, TO PROVIDE FOR PLACEMENT AND REMOVAL.



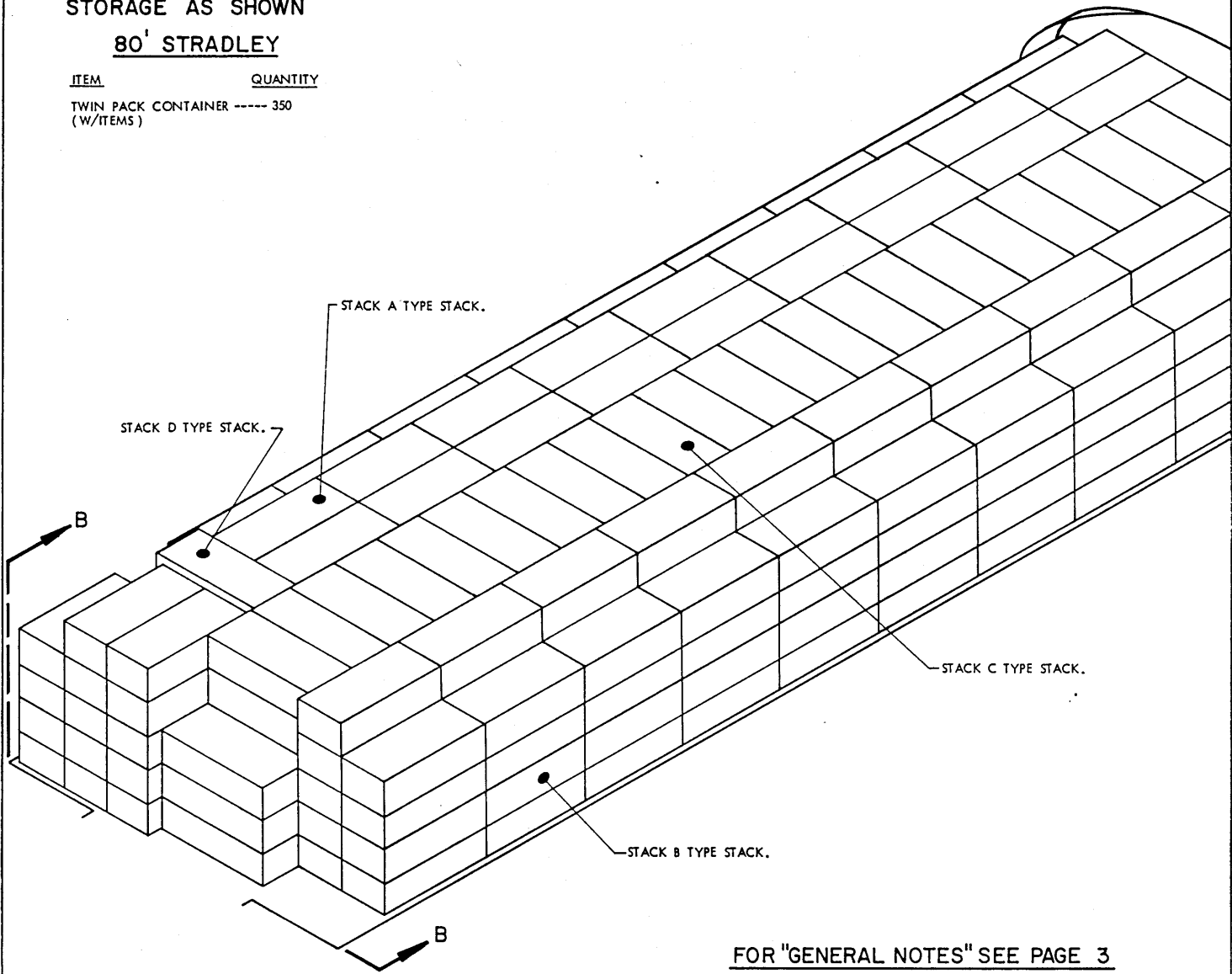
PLAN VIEW
(80' STRADLEY MAGAZINE)



STORAGE AS SHOWN

80' STRADLEY

ITEM QUANTITY
 TWIN PACK CONTAINER ----- 350
 (W/ITEMS)



FOR "GENERAL NOTES" SEE PAGE 3

ISOMETRIC VIEW

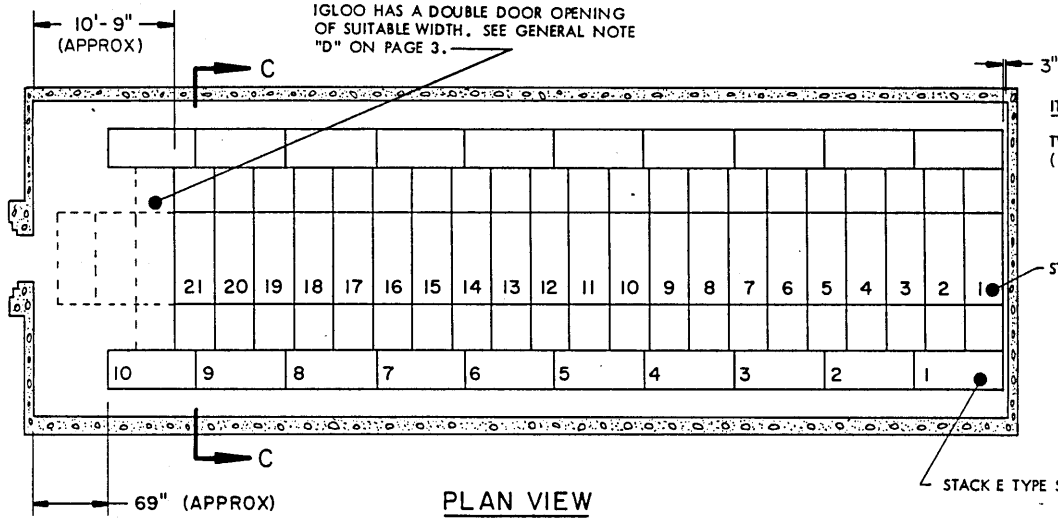
(80' STRADLEY MAGAZINE)

BILL OF MATERIAL (PER STACK)		
TYPE STACK	WEDGE SIZE	NO. REQD
A	2" X 4" X 9'-0"	4
B	2" X 4" X 6'-0"	4
C	(NONE REQUIRED)	
D	(NONE REQUIRED)	

ADDITIONAL STORAGE WHEN IGLOO HAS A DOUBLE DOOR OPENING OF SUITABLE WIDTH. SEE GENERAL NOTE "D" ON PAGE 3.

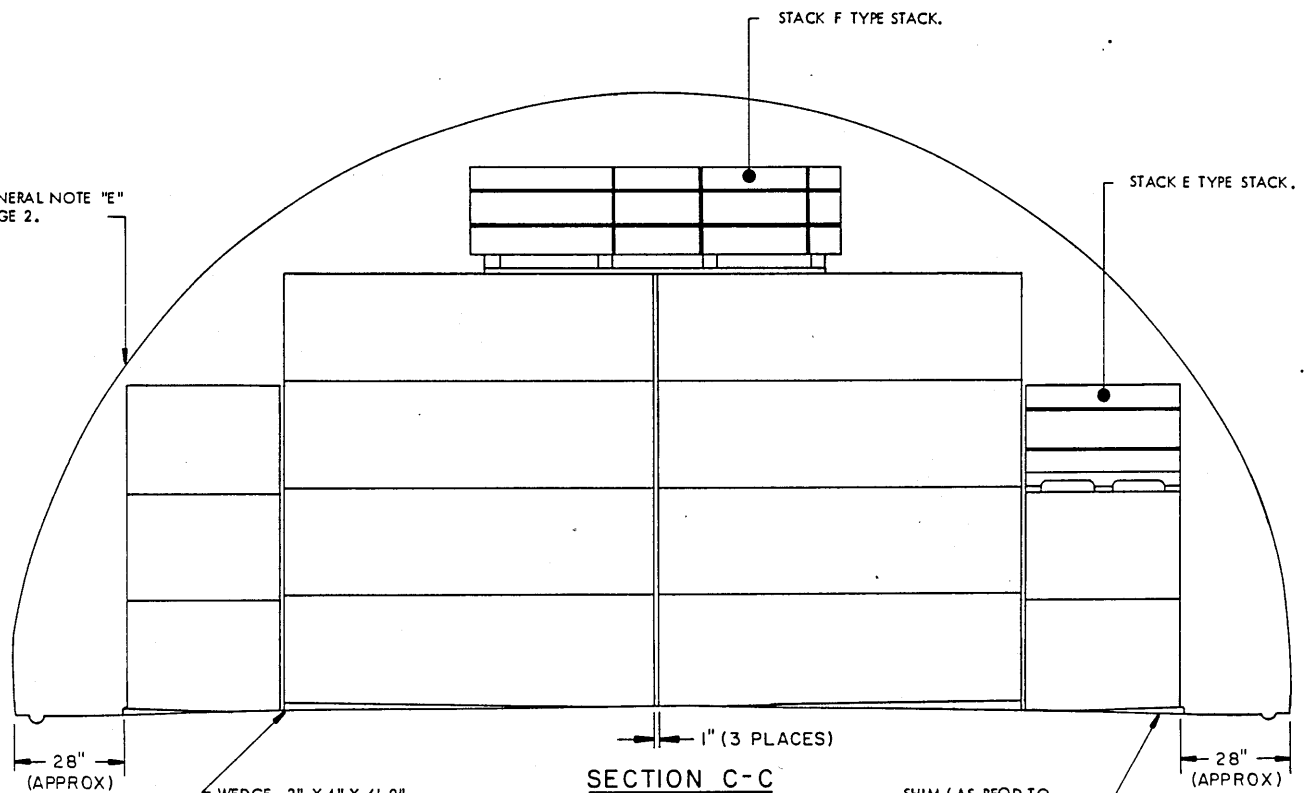
STORAGE AS SHOWN
80' IGLOO

ITEM	QUANTITY
TWIN PACK CONTAINER (W/ITEMS)	249



PLAN VIEW
(80' IGLOO)

SEE GENERAL NOTE "E" ON PAGE 2.



SECTION C-C

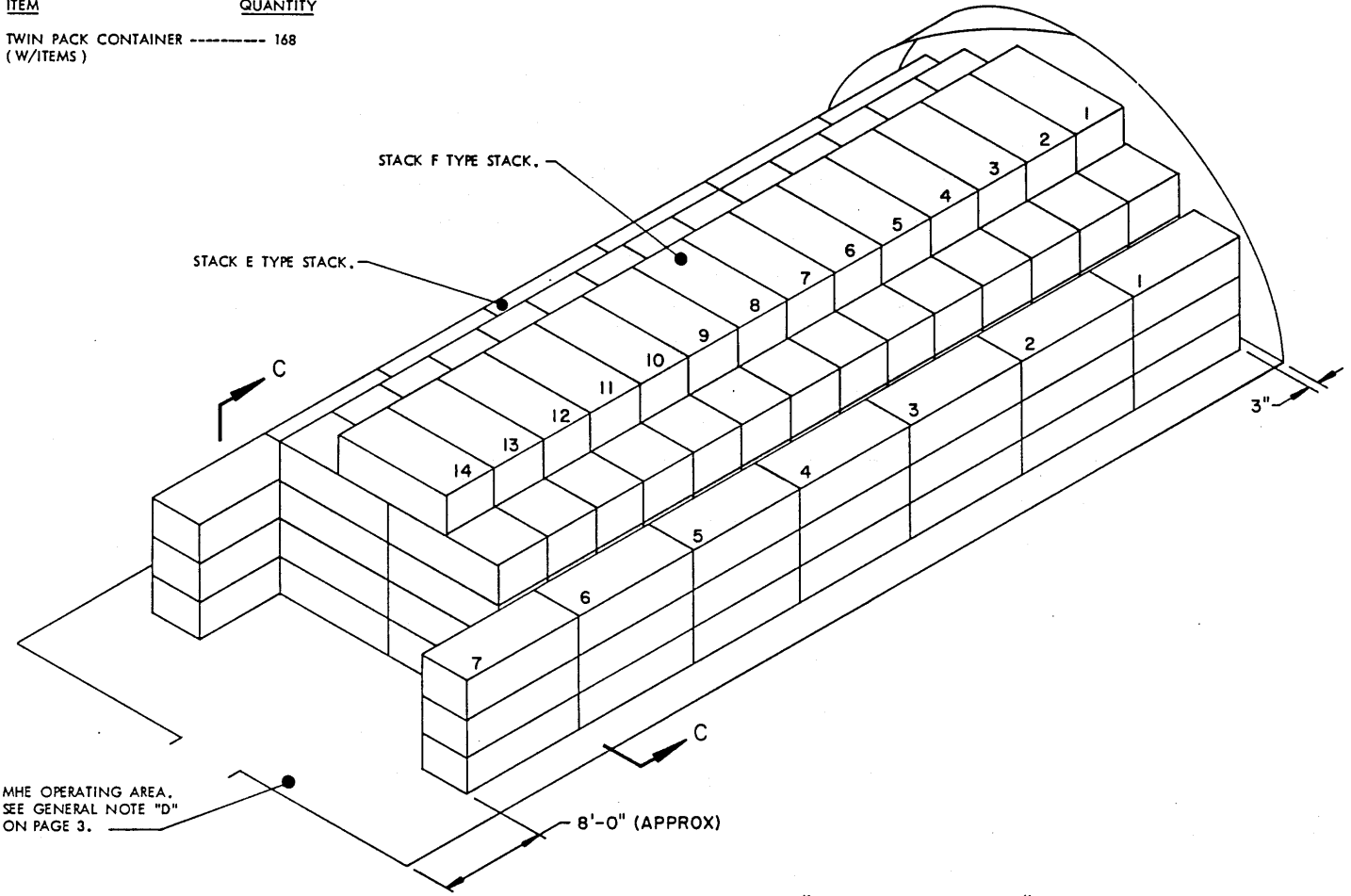
WEDGE, 2" X 4" X 6'-0"
(4 REQD PER "STACK F").
SEE "WEDGE DETAILS" AND
"PLACEMENT OF WEDGES"
DETAIL ON PAGE 10.

SHIM (AS REQD TO
PROVIDE A LEVEL, FULL-
BEARING SURFACE FOR
THE SKIDS OF A LOWER
CONTAINER).

STORAGE AS SHOWN

60' IGLOO

ITEM QUANTITY
 TWIN PACK CONTAINER ----- 168
 (W/ITEMS)

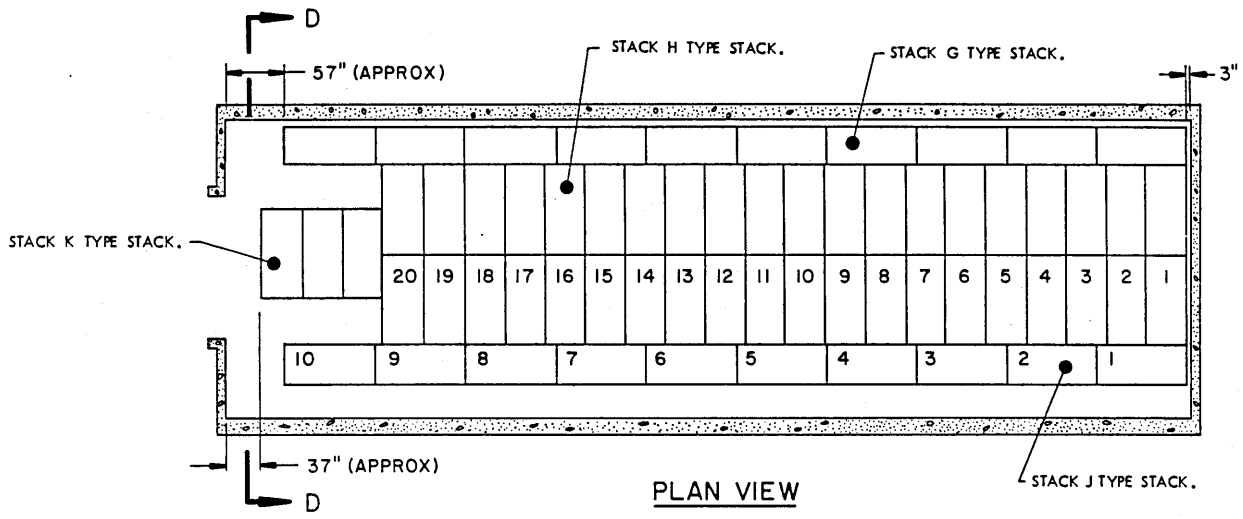


ISOMETRIC VIEW

(60' IGLOO)

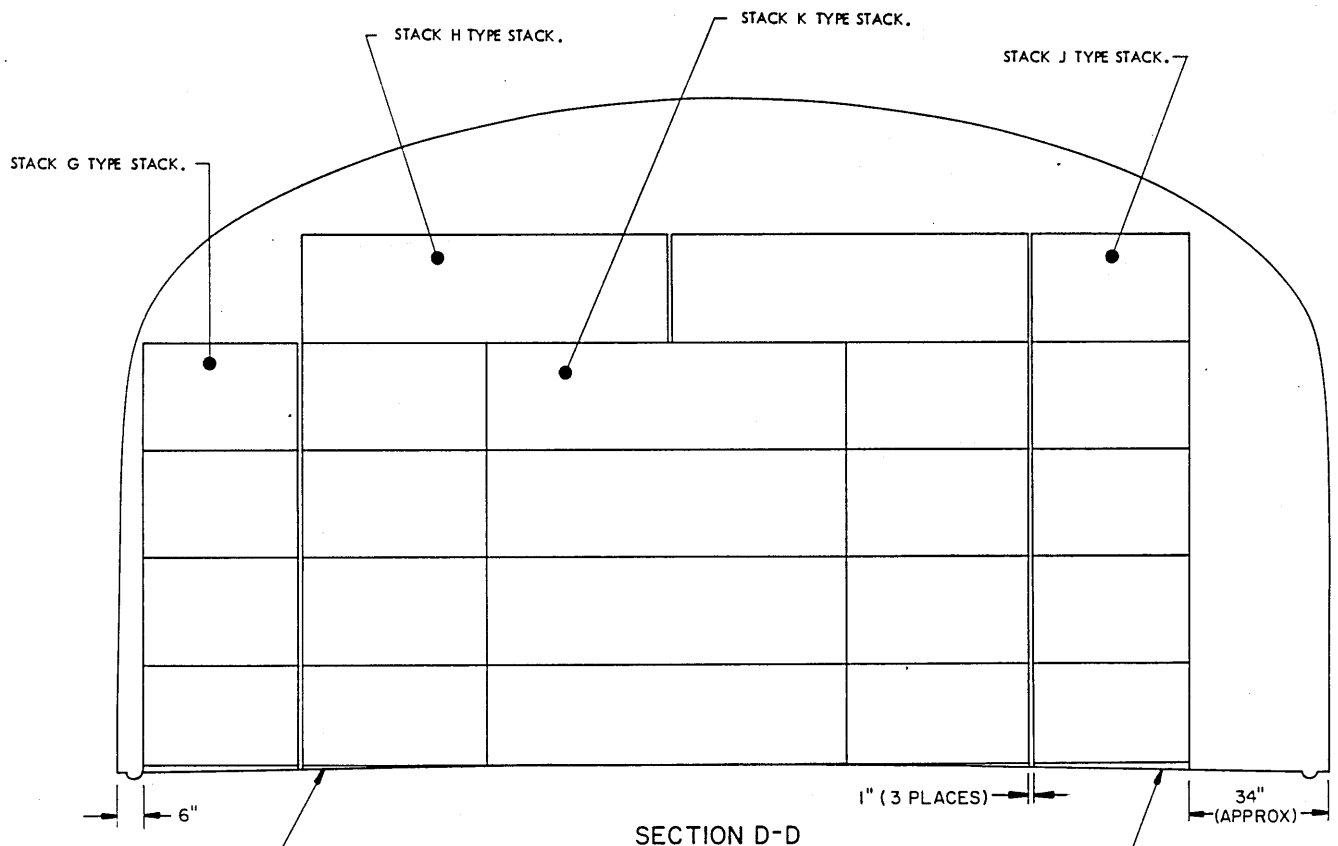
FOR "GENERAL NOTES" SEE PAGE 3

BILL OF MATERIAL (PER STACK)		
TYPE STACK	WEDGE SIZE	NO. REQD
E	SHIM AS REQUIRED	
F	2" X 4" X 6'-0"	4



PLAN VIEW

(80' STRADLEY MAGAZINE)



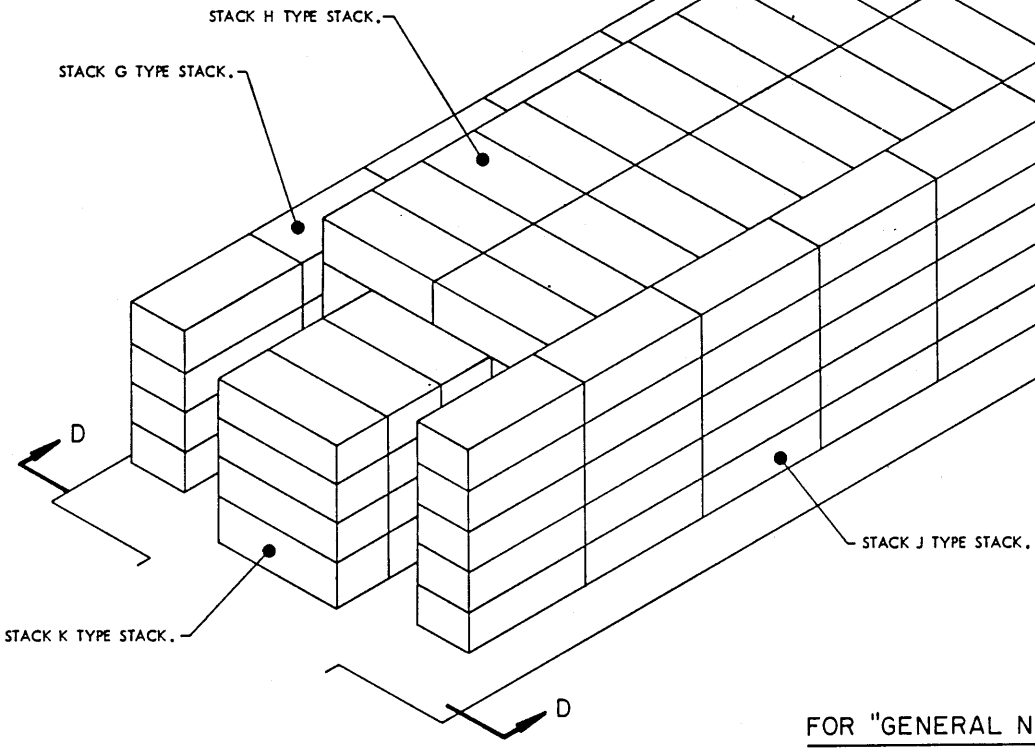
SECTION D-D

WEDGE, 2" X 4" X 6'-0" (4 REQD PER "STACK H"). SEE "WEDGE DETAILS" AND "PLACEMENT OF WEDGES" DETAIL ON PAGE 10.

SHIM (AS REQD TO PROVIDE A LEVEL, FULL-BEARING SURFACE FOR THE SKIDS OF A LOWER CONTAINER).

STORAGE AS SHOWN
80' STRADLEY

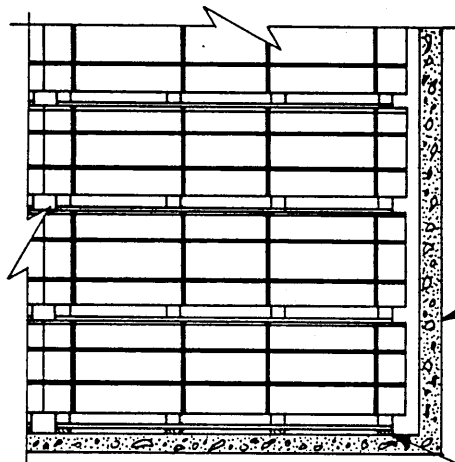
ITEM	QUANTITY
TWIN PACK CONTAINER ----- (W/ITEMS)	302



FOR "GENERAL NOTES" SEE PAGE 3

ISOMETRIC VIEW
 (80' STRADLEY MAGAZINE)

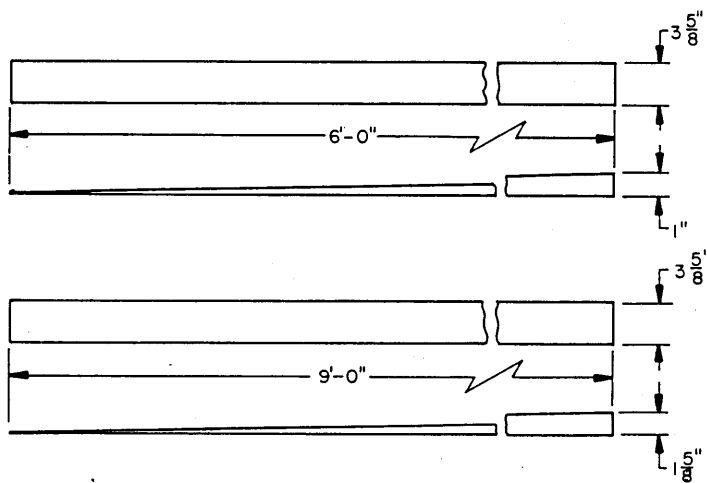
BILL OF MATERIAL (PER STACK)		
TYPE STACK	WEDGE SIZE	NO. REQD
G	SHIM AS REQUIRED	
H	2" X 4" X 6'-0"	4
J	SHIM AS REQUIRED	
K	(NONE REQUIRED)	



INDICATES REAR WALL OF MAGAZINE.

INDICATES WEDGE. WHERE WEDGES ARE SPECIFIED THEY WILL BE USED IN SETS OF FOUR (4), ONE (1) EACH IN LINE WITH A STRINGER OF THE CONTAINER PALLET AS SHOWN.

PLACEMENT OF WEDGES



WEDGE DETAILS