

APPENDIX 7*

UNITIZATION PROCEDURES FOR COMPLETE ROUNDS PACKED IN CYLINDRICAL METAL CONTAINERS ON 4-WAY ENTRY PALLETS[^]

**CARTRIDGE, 120MM, PACKED 1 PER PA116 OR
PA171 CYLINDRICAL METAL CONTAINER, UNITIZED
25 PER 40" X 44" PALLET; APPROX CONTAINER
SIZE 44-1/2" L X 7-3/4" W X 7-3/4" H**

*THE PROCEDURES DEPICTED WITHIN THIS APPENDIX FOR THE ITEMS SPECIFIED IN THE "PALLET UNIT DATA"
CHART ARE FOR MARINE CORPS USE ONLY AND ARE NOT INTENDED TO BE USED BY ANY OTHER SERVICE WITH-
OUT APPROPRIATE COMMAND APPROVAL.

^SEE GENERAL NOTE "K" ON PAGE 3.

DISTRIBUTION STATEMENT A:

NOTICE: THIS APPENDIX CANNOT STAND ALONE BUT MUST BE USED IN CONJUNCTION WITH THE BASIC UNITIZATION PROCEDURES DRAWING 19-48-4079-20PM1002.

APPROVED FOR PUBLIC RELEASE
DISTRIBUTION IS UNLIMITED.

U.S. ARMY MATERIEL COMMAND DRAWING

<p>APPROVED, U.S. ARMY RESEARCH, DEVELOPMENT AND ENGINEERING COMMAND</p> <p>REHMSTEDT.MA RK.J.1230548400</p> <p style="font-size: small;">Digitally signed by REHMSTEDT.MARK.J.1230548400 DN: cn=US, o=U.S. Government, ou=DoD, ou=PKI, ou=USA, c=US, email=REHMSTEDT.MARK.J.1230548400 Date: 2011.07.01 13:39:12 -0500</p> <p style="text-align: right;">RDAR-EIL-TP</p>	<p>CAUTION: VERIFY PRIOR TO USE AT WWW.DAC.ARMY.MIL THAT THIS IS THE MOST CURRENT VERSION OF THIS DOCUMENT. THIS IS PAGE 1 OF 8.</p>		<p>JUNE 1989</p>			
<p>APPROVED, U.S. ARMY JOINT MUNITIONS COMMAND</p> <p>CASILLAS.GILBE RT.J.1230393644</p> <p style="font-size: small;">Digitally signed by CASILLAS.GILBERT.J.1230393644 DN: cn=US, o=U.S. Government, ou=DoD, ou=PKI, ou=USA, c=US, email=CASILLAS.GILBERT.J.1230393644 Date: 2011.07.01 06:55:51 -0500</p> <p style="text-align: right;">AMSJM-LIT</p>	<p>DO NOT SCALE</p>	<p>LAURA FIEFFER</p>	<p>REVISION NO. 5</p>	<p>MAY 2011</p>		
<p>APPROVED BY ORDER OF COMMANDING GENERAL, U.S. ARMY MATERIEL COMMAND</p> <p>CARNEY.GARY.BURTON.1038708038</p> <p style="font-size: small;">Digitally signed by CARNEY.GARY.BURTON.1038708038 DN: cn=US, o=U.S. Government, ou=DoD, ou=PKI, ou=USA, c=US, email=CARNEY.GARY.BURTON.1038708038 Date: 2011.07.18 07:44:37 -0500</p> <p style="text-align: center;">U.S. ARMY DEFENSE AMMUNITION CENTER</p>	<p>TRANSPORTATION ENGINEERING DIVISION</p> <p>FIEFFER.LAURA.A.1230375727</p> <p style="font-size: small;">Digitally signed by FIEFFER.LAURA.A.1230375727 DN: cn=US, o=U.S. Government, ou=DoD, ou=PKI, ou=USA, c=US, email=FIEFFER.LAURA.A.1230375727 Date: 2011.05.04 10:59:53 -0500</p>	<p>VALIDATION ENGINEERING DIVISION</p> <p>BARICKMAN.PHILIP.W.1230202202</p> <p style="font-size: small;">Digitally signed by BARICKMAN.PHILIP.W.1230202202 DN: cn=US, o=U.S. Government, ou=DoD, ou=PKI, ou=USA, c=US, email=BARICKMAN.PHILIP.W.1230202202 Date: 2011.05.11 10:46:55 -0500</p>	<p>TESTED</p>	<p>SEE THE REVISION LISTING ON PAGE 2</p>		
	<p>ENGINEERING OR TECHNICIAN</p>	<p>BASIC REV.</p>	<p>CLASS</p>	<p>DIVISION</p>	<p>DRAWING</p>	<p>FILE</p>
	<p>ENGINEERING DIRECTORATE</p>	<p>BEAVER.JERRY.W.1230949952</p> <p style="font-size: small;">Digitally signed by BEAVER.JERRY.W.1230949952 DN: cn=US, o=U.S. Government, ou=DoD, ou=PKI, ou=USA, c=US, email=BEAVER.JERRY.W.1230949952 Date: 2011.05.12 14:41:00 -0500</p>	<p>19</p>	<p>48</p>	<p>4079/7</p>	<p>20PM1002</p>

PALLET UNIT DATA					
ITEMS INCLUDED		*HAZARD CLASS AND DIVISION	*COMPATIBILITY GROUP	APPROX WEIGHT (LBS)	
NSN	DODIC			PALLET UNIT A	PALLET UNIT B
1315-					
01-316-1211	C380	1. 2. 1	C	1, 866	1, 828
01-292-7754	C784	1. 2. 1	C	2, 043	2, 005
01-369-1901	C784	1. 2. 1	C	2, 043	2, 005
01-292-7755	C785	1. 2. 1	C	1, 738	1, 700
01-305-9252	C785	1. 2. 1	C	1, 738	1, 700
01-292-7753	C786	1. 2. 1	C	1, 738	1, 700
01-292-9868	C787	1. 2. 1	E	2, 043	2, 005
01-333-0533	C791	1. 2. 1	E	2, 033	1, 995
01-536-2372	CA38	1. 3	C	2, 036	1, 999

*HAZARD AND CLASSIFICATION DATA CONTAINED IN THE ABOVE CHART IS FOR GUIDANCE AND INFORMATIONAL PURPOSES ONLY. VERIFICATION OF THE SPECIFIED DATA SHOULD BE MADE BY CONSULTING THE MOST RECENT JOINT HAZARD CLASSIFICATION SYSTEM LISTING OR OTHER APPROVED LISTING(S).

REVISIONS

(REVISIONS CONTINUED)

REVISION NO. 1, DATED JUNE 1989, CONSISTS OF:

ADDING PROCEDURES FOR A PALLET UNIT WITH TOP LIFT CAPABILITY (PALLET UNIT "A")

REVISION NO. 2, DATED SEPTEMBER 1993, CONSISTS OF CHANGES PER ECP'S M0T3016 (1 AND 2) AND M3K3014 (1):

1. ADDING ITEMS BY NATIONAL STOCK NUMBER (NSN) TO THE "PALLET UNIT DATA" CHART.
2. RESIZING TIEDOWN STRAP WIDTH FROM 3/4" TO 1-1/4" FOR PALLET UNIT "A".

REVISION NO. 3, DATED APRIL 1996, CONSISTS OF CHANGES PER ECP'S M3T4321 (1 AND 2) AND M4T3007 (3):

1. ADDING APPLICATION TABLE (PAGE 3).
2. ADDING ALTERNATE STRINGER PLACEMENT (GENERAL NOTES "R" AND "S" AND PAGE 6).
3. ADDING PROVISIONS FOR OMITTING BUNDLING STRAPS ON REDUCED HEIGHT LOADS (PAGE 7).

REVISION NO. 4, DATED JULY 2006, CONSISTS OF CHANGES PER ECP'S R05T5076 (1-13), R06K2014 (14) AND R06K3003 (15):

1. ADDING REFERENCE TO PA171 CONTAINER.
2. ADDING SPECIFIC DRAWING REFERENCES (GENERAL NOTE "C").
3. ELIMINATING STRAP CUTTER NOTE (GENERAL NOTE "D").
4. ADDING LIFTING FRAME LOT NUMBER MARKING REQUIREMENTS (NEW GENERAL NOTE "D" AND PALLET UNIT "A" ISOMETRIC).
5. REMOVING GENERAL NOTES "R" AND "S", INCORPORATING STRINGER REQUIREMENTS INTO GENERAL NOTE "K", AND UPDATING FROM "MAY" TO "SHALL".

(CONTINUED AT RIGHT)

6. REPLACING MIL-STD-129-1 WITH DAC DRAWING ACV00561 (GENERAL NOTES "L" AND "M").
7. REPLACING PLYWOOD WITH HARDWOOD FOR BUFFER (GENERAL NOTE "N").
8. ADDING TRUSS-NAIL NOTE (GENERAL NOTE "O").
9. ADDING HEAT TREATMENT NOTE (GENERAL NOTE "P").
10. ADDING ROOFING NAIL NOTE (GENERAL NOTE "S").
11. ADDING BUNDLING STRAP NOTE (GENERAL NOTE "G").
12. UPDATING ISOMETRIC VIEWS TO CONFORM TO NUMBERS 1-11 ABOVE.
13. UPDATING PALLET DUNNAGE DETAILS TO REMOVE 17-3/4" WIDE PLYWOOD.
14. ADDING ITEM BY NATIONAL STOCK NUMBER (NSN) TO THE "PALLET UNIT DATA" CHART.
15. CHANGING REFERENCE FROM DOT-E-9649 TO DOT-SP-9649 (GENERAL NOTE "T").

REVISION NO. 5, DATED MAY 2011, CONSISTS OF CHANGES PER ECP'S R06T5230 (1-3) AND R10K2004 (4):

1. ADDING ITEM BY NATIONAL STOCK NUMBER (NSN) TO THE "PALLET UNIT DATA" CHART.
2. UPDATING PALLET UNIT DATA CHART.
3. UPDATING BAR CODE LABELING (GENERAL NOTE "H").
4. UPDATING RADIOACTIVE LABELING (GENERAL NOTE "T").
5. COMBINING AND UPDATING PRESERVATIVE AND HEAT TREATMENT REQUIREMENTS (GENERAL NOTE "P").
6. CORRECTING LUMBER GROUP FOR THE BUFFER PIECE (GENERAL NOTE "M").

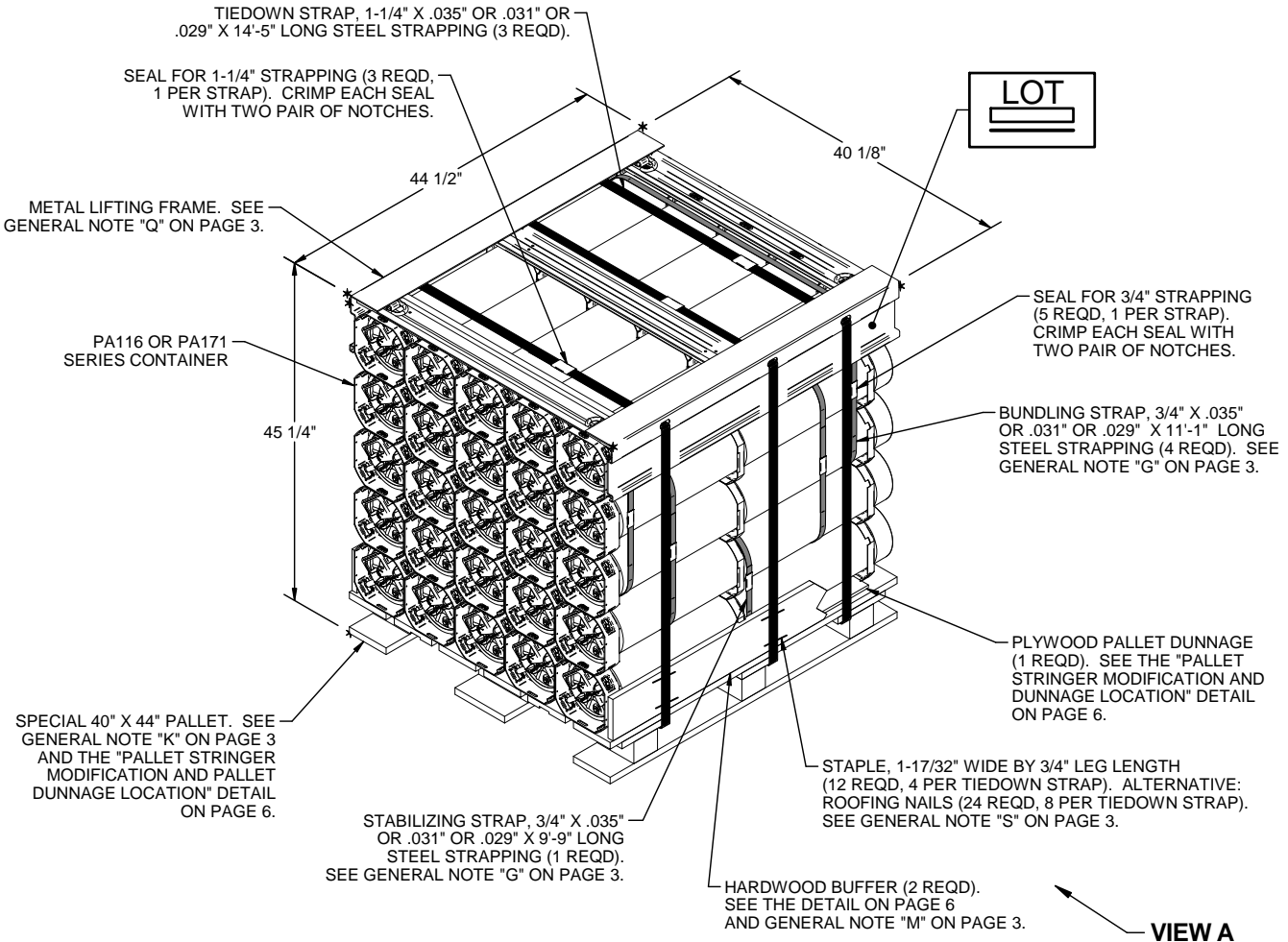
GENERAL NOTES

- A. THIS APPENDIX CANNOT STAND ALONE BUT MUST BE USED IN CONJUNCTION WITH THE BASIC UNITIZATION PROCEDURES DRAWING 19-48-4079-20PM1002. TO PRODUCE AN APPROVED UNIT LOAD, ALL PERTINENT PROCEDURES, SPECIFICATIONS AND CRITERIA SET FORTH WITHIN THE BASIC DRAWING WILL APPLY TO THE PROCEDURES DELINEATED IN THIS APPENDIX. ANY EXCEPTIONS TO THE BASIC PROCEDURES ARE SPECIFIED IN THIS APPENDIX.
- B. DIMENSIONS, CUBE AND WEIGHT OF A PALLET UNIT WILL VARY SLIGHTLY DEPENDING UPON THE ACTUAL DIMENSIONS OF THE BOXES AND THE WEIGHT OF THE SPECIFIC ITEM BEING UNITIZED.
- C. THE FOLLOWING AMC DRAWINGS ARE APPLICABLE FOR OUTLOADING AND STORAGE OF THE ITEMS COVERED BY THIS APPENDIX.
- | | | |
|------------------|---------|----------------------------------|
| CARLOADING | - - - - | 19-48-4212/8-5PM1003 |
| TRUCKLOADING | - - - - | 19-48-4213/8-11PM1003 |
| STORAGE | - - - - | 19-48-4145/8-1-2-3-4-14-22PM1003 |
| END OPENING ISO | | |
| CONTAINER | - - - - | 19-48-4215/8-15PM1013 |
| MILVAN | - - - - | 19-48-4214/8-15PM1006 |
| SIDE OPENING ISO | | |
| CONTAINER | - - - - | 19-48-4265/8-15PM1014 |
- D. IF ITEMS COVERED HEREIN ARE UNITIZED PRIOR TO ISSUANCE OF THIS REVISION TO THIS APPENDIX, THE CONTAINERS NEED NOT BE REUNITIZED SOLELY TO CONFORM TO THIS APPENDIX.
- E. FOR DETAILS OF THE PA116 OR PA171 CONTAINER SEE ARDEC DRAWING 9386831 OR 12990755, RESPECTIVELY.
- F. THE UNITIZATION PROCEDURES DEPICTED HEREIN MAY ALSO BE USED FOR UNITIZING 120MM CARTRIDGES WHEN IDENTIFIED BY DIFFERENT NATIONAL STOCK NUMBERS (NSN) THAN WHAT IS SHOWN ON PAGE 2. PROVIDED THE CONTAINER PACK DOES NOT VARY FROM WHAT IS DELINEATED HEREIN. THE EXPLOSIVE CLASSIFICATION OF OTHER ITEMS MAY BE DIFFERENT THAN WHAT IS SHOWN.
- G. BUNDLING STRAPS AND STABILIZING STRAP MUST BE TENSIONED AND SEALED PRIOR TO THE APPLICATION OF THE TIEDOWN STRAPS. INSTALL AS CLOSE TO THE OUTER CONTAINER RINGS AS POSSIBLE, TO AVOID DAMAGE TO THE CONTAINER. **CAUTION:** STRAPS MUST NOT BE ALLOWED TO OVERLAP. DO NOT PLACE ANY STRAP OVER THE IM BLOWOUT PANELS OF THE PA171 SERIES CONTAINERS.
- H. FULL IDENTIFICATION MARKINGS IN ACCORDANCE WITH DAC DRAWING ACV00561, TO INCLUDE NSN AND DODIC, QUANTITY AND NOMENCLATURE, LOT NUMBER AND GROSS WEIGHT OF THE LOAD, SHALL BE MARKED ON TAGS LOCATED ON OPPOSITE UPPER CORNERS OF THE LOAD. 2-D BAR CODE LABELS ARE REQUIRED IN ACCORDANCE WITH DAC DRAWING ACV00561.
- J. THE AMMUNITION LOT NUMBER MAKING SHALL BE PLACED IN THE AREA INDICATED IN THE ISOMETRIC VIEW ON PAGE 4, FOR THE M831 AND M831A1 CARTRIDGES ONLY, IN 1/2" HIGH UNDERLINED LETTERS.
- K. THE SPECIAL PALLET WILL BE CONSTRUCTED AND ASSEMBLED IN ACCORDANCE WITH A MILITARY SPECIFICATION MIL-P-15011, STYLE 1, TYPE I, CLASS 1 PALLET WITH THE FOLLOWING EXCEPTIONS: THE TOP AND BOTTOM DECK BOARDS WILL BE 44" LONG INSTEAD OF 48". IN ORDER TO PROVIDE ADDITIONAL SUPPORT FOR THE STEEL BANDS, THE TWO OUTSIDE 1" X 8" STRINGER BOARDS ON THE MODIFIED PALLET SHALL BE POSITIONED AS SHOWN IN THE DETAIL ON PAGE 6, AND THE CENTER STRINGER BOARD ON THE MODIFIED PALLET SHALL BE REPLACED WITH A 1" X 6" AS SHOWN IN THE DETAIL ON PAGE 6. THE MODIFIED STYLE 1 PALLET ALSO NEED NOT HAVE CHAMFERS OR STRAP SLOTS AS SPECIFIED WITHIN MILITARY SPECIFICATION MIL-P-15011 WHEN USED FOR THE UNITIZATION OF ITEMS COVERED BY THIS APPENDIX. ALL OTHER REQUIREMENTS SPECIFIED WITHIN MIL-P-15011 FOR A STYLE 1, TYPE I CLASS 1 PALLET WILL APPLY TO THE PALLET SPECIFIED WITHIN THIS DRAWING.
- L. ALTHOUGH THE CONTAINERS DEPICTED IN THE UNIT LOADS ON PAGES 4 AND 5 ARE CONSTRUCTED WITH INTERLOCKING DEVICES THE INTERLOCKS WILL NOT FUNCTION PROPERLY UNLESS THE CONTAINERS ARE POSITIONED SO THAT THE "PINS" OF THE INTERLOCKS ARE FACING UPWARD. THIS ORIENTATION WILL AID IN THE PREVENTION OF CONTAINER MOVEMENT, BOTH Laterally AND LONGITUDINALLY, DURING SHIPMENT OF THE UNIT LOAD.

(CONTINUED AT RIGHT)

(GENERAL NOTES CONTINUED)

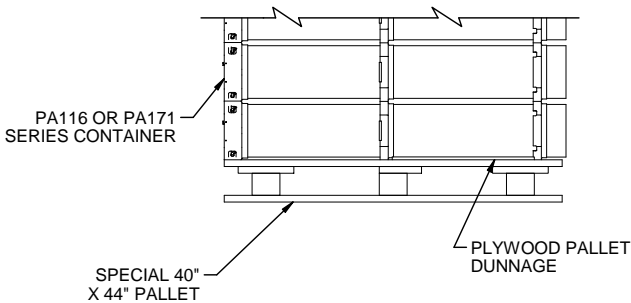
- M. THE HARDWOOD BUFFER PIECES DEPICTED IN THE UNIT LOAD ON PAGE 4 WILL BE NOMINAL 1" X 6" LUMBER IAW ASTM D6199, CLASS 2, GROUP IV. THE THICKNESS OF THE HARDWOOD BUFFER PIECES MUST BE ADJUSTED, AS REQUIRED, TO COMPLY WITH THE DIMENSIONAL VARIANCE OF THE PA116 OR PA171 CONTAINERS, SO AS TO COMPLETELY FILL OUT THE PALLET. THE LENGTH DIMENSION OF THE PALLET UNIT AT THE HARDWOOD BUFFER PIECES MUST BE WITHIN THE TOLERANCE OF PLUS 1/4", MINUS 0" OF THE LENGTH DIMENSION AT THE TOP OF THE PALLET UNIT.
- N. ALL DUNNAGE SHALL BE PRESERVATIVE TREATED IN ACCORDANCE WITH GENERAL NOTE "X" IN THE BASIC PROCEDURES.
- O. TWO METHODS MAY BE USED TO IMPROVE PALLET PERFORMANCE DURING MULTIPLE HANDLINGS IN THE REUSE PROGRAM, IF SO DESIRED. FIRST METHOD: COMMERCIALY AVAILABLE TRUSS-NAIL PLATES MAY BE ADDED TO THE SIX OUTSIDE POSTS OF THE PALLET. SECOND METHOD: FOUR 3-1/4" NAILS MAY BE USED IN EACH POST IN A BOX SHAPED PATTERN IN LIEU OF THE THREE 3-1/4" NAILS IN A STAGGERED PATTERN CURRENTLY SPECIFIED IN MIL-P-15011.
- P. ALL WOODEN DUNNAGE SHALL BE PRESERVATIVE TREATED IN ACCORDANCE WITH GENERAL NOTE "X" IN THE BASIC PROCEDURES, AND HEAT TREATED IN ACCORDANCE WITH GENERAL NOTE "BB" IN THE BASIC PROCEDURES. SEE PAGE 6 FOR THE ALTERNATIVE PALLET MARKING LOCATIONS TO BE USED IF TRUSS-NAIL PLATES WILL COVER THE PALLET POST ENDS, PRECLUDING MARKING AS REQUIRED IN THE BASIC PROCEDURE.
- Q. FOR DETAILS OF THE METAL LIFTING FRAME, SEE DAC DRAWING AC200000807 AND MILITARY SPECIFICATION MIL-A-70788.
- R. WHEN ONE OR MORE LAYERS ARE OMITTED, THE BUNDLING STRAP REQUIREMENTS WILL CHANGE. A FOUR LAYER UNIT WILL HAVE TWO BUNDLING STRAPS OMITTED. THE REMAINING BUNDLING STRAPS WILL SURROUND THE SECOND THROUGH THE FOURTH LAYERS. A UNIT WITH THREE OR LESS LAYERS DOES NOT REQUIRE BUNDLING STRAPS. THERE WILL BE NO CHANGE ON THE STABILIZING STRAP REQUIREMENT.
- S. ROOFING NAILS IAW ASTM F1667 NL RF S S-02Z OR NL RF S Q-02Z MAY BE USED AS AN ALTERNATIVE TO STAPLES FOR SECURING THE STEEL STRAPS TO THE BUFFER PIECES. NAILS MUST BE APPLIED NEXT TO THE STRAPPING SUCH THAT THE NAIL HEADS OVERLAP THE STRAPPING. APPLY 12 NAILS (FOUR PER STRAP) TO EACH BUFFER PIECE IN PAIRS ON EITHER SIDE OF THE STRAP WITH THE SECOND NAIL APPLIED APPROXIMATELY 180 DEGREES FROM THE FIRST NAIL.
- T. FOR DODICS C380 AND C786 ONLY, THE METAL LIFTING FRAME OF PALLET UNIT "A" OR THE TOP BUFFER PIECE OF THE SIDE ASSEMBLY OF PALLET UNIT "B" WILL BE MARKED WITH "DOT-SP-9649" IN ONE-INCH WHITE LETTERS NEAR THE CLOSED END OF THE CONTAINERS. A "RADIOACTIVE YELLOW-II" LABEL MUST BE APPLIED TO EITHER THE METAL LIFTING FRAME OF THE PALLET UNIT "A" OR THE TOP BUFFER PIECE OF THE SIDE ASSEMBLY OF PALLET UNIT "B". SEE DAC DRAWING ACV00832 FOR DETAILS.
- U. THE THICKNESS OF THE PLYWOOD BUFFER PIECES DEPICTED IN THE "SIDE ASSEMBLY" DETAIL ON PAGE 6 MUST BE ADJUSTED, AS REQUIRED, TO COMPLY WITH THE DIMENSIONAL VARIANCE OF THE PA116 OR PA171 CONTAINERS, SO AS TO COMPLETELY FILL OUT THE PALLET. THE LENGTH DIMENSION OF THE PALLET UNIT AT THE SIDE ASSEMBLIES MUST BE EQUAL TO OR GREATER THAN 40" FOR PALLET UNIT "B". **NOTE:** NOMINAL 1" MATERIAL MAY BE SUBSTITUTED FOR THE PLYWOOD IF IT WILL CAUSE THE PALLET UNIT DIMENSIONS TO BE EQUAL OR GREATER THAN 40" AND IF SO DESIRED. ALL THREE BUFFER PIECES MUST BE THE SAME THICKNESS, FOR EXAMPLE, IF 1" X 4" MATERIAL IS USED FOR THE TOP AND BOTTOM BUFFER PIECES, 3/4" PLYWOOD MUST BE USED FOR THE MIDDLE BUFFER PIECE.
- V. PALLET "A" IS THE PREFERRED METHOD OF UNITIZATION AND SHALL BE UTILIZED UNLESS OTHERWISE DIRECTED BY THE RESPONSIBLE COMMAND.



ISOMETRIC VIEW

PALLET UNIT DATA

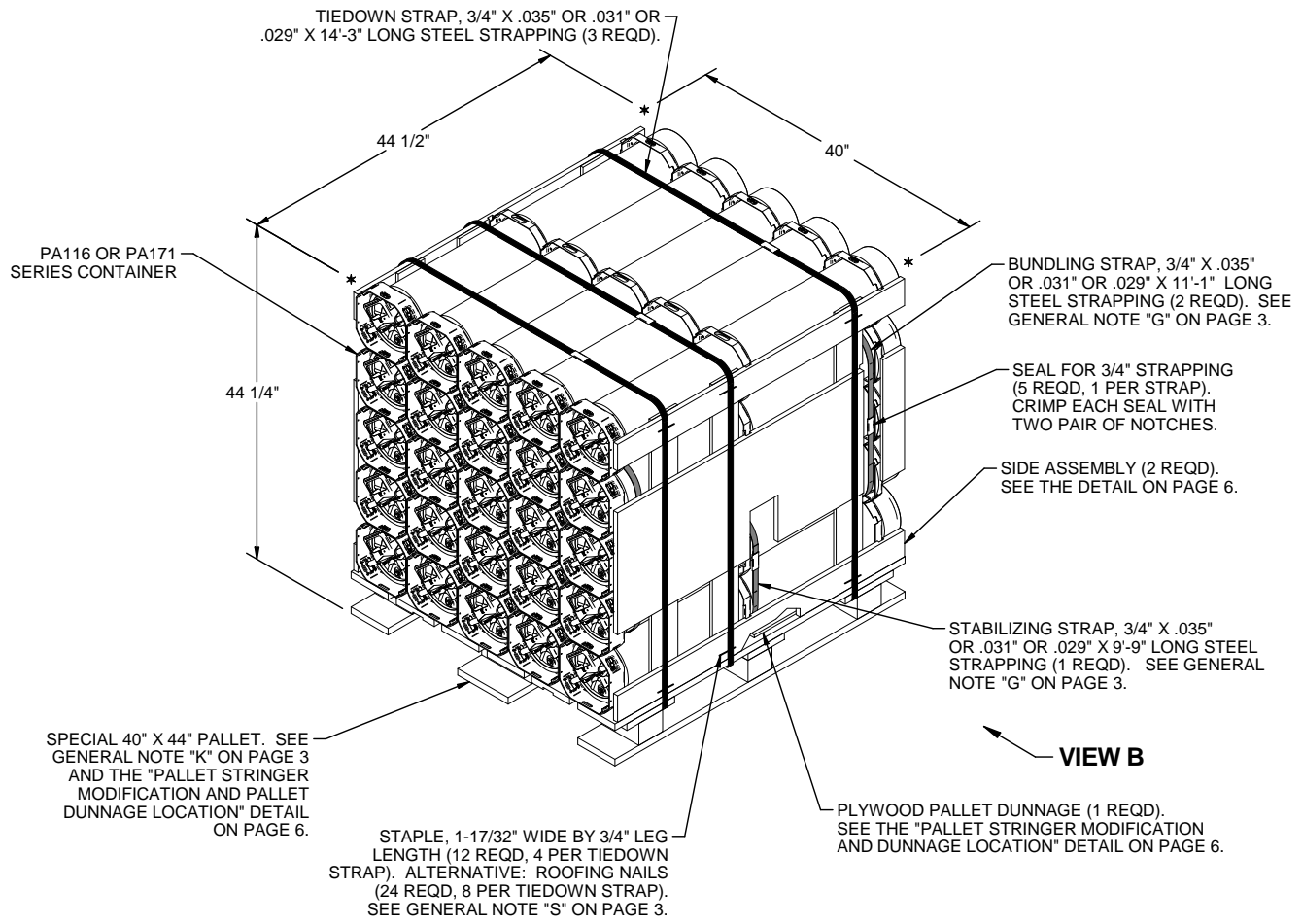
PA116 CONTAINER	25 EACH @ 75.4 LBS	1,885 LBS
DUNNAGE		81 LBS
PALLET		77 LBS
TOTAL WEIGHT		2,043 LBS (APPROX)
CUBE		46.8 CU FT (APPROX)



PARTIAL VIEW A

HARDWOOD BUFFER AND STRAPS
HAVE BEEN OMITTED FOR CLARITY.

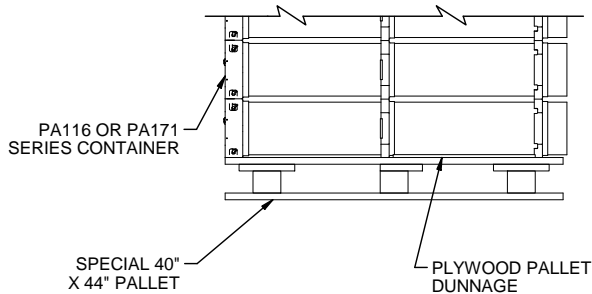
BILL OF MATERIAL		
LUMBER	LINEAR FEET	BOARD FEET
1" X 6"	7.25	3.63
NAILS	NO. REQD	POUNDS
6d (2")	6	0.04
SPECIAL PALLET, 40" X 44"	1 REQD	77 LBS
STEEL STRAPPING, 3/4"	54.08' REQD	4.83 LBS
STEEL STRAPPING, 1-1/4"	43.25' REQD	6.18 LBS
SEAL FOR 3/4" STRAPPING	5 REQD	NIL
SEAL FOR 1-1/4" STRAPPING	3 REQD	NIL
PLYWOOD, 3/8"	4.98 SQ FT REQD	5.13 LBS
STAPLE, 1-17/32" X 3/4"	12 REQD	NIL
METAL LIFTING FRAME	1 REQD	57 LBS



ISOMETRIC VIEW

PALLET UNIT DATA

PA116 CONTAINER 25 EACH @ 75.4 LBS	1,885 LBS
DUNNAGE	42 LBS
PALLET	77 LBS
TOTAL WEIGHT	2,005 LBS (APPROX)
CUBE	45.6 CU FT (APPROX)

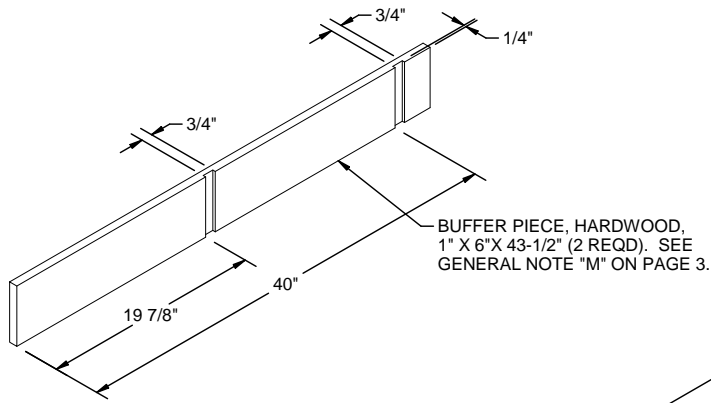


PARTIAL VIEW B

SIDE ASSEMBLY AND STRAPS HAVE BEEN OMITTED FOR CLARITY.

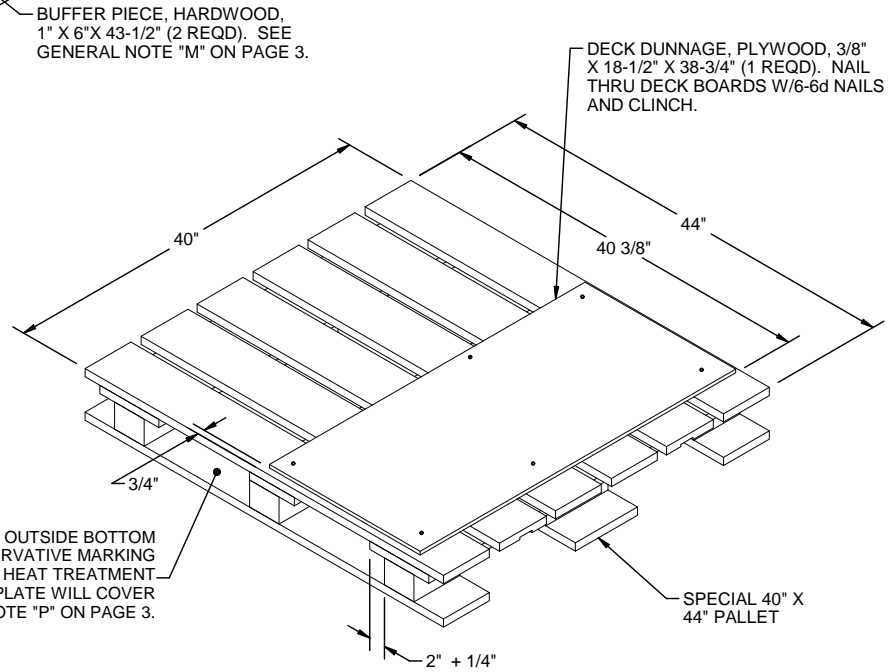
BILL OF MATERIAL		
NAILS	NO. REQD	POUNDS
4d (1-1/2")	54	0.18
6d (2")	6	0.04
SPECIAL PALLET, 40" X 44"	1 REQD	77 LBS
STEEL STRAPPING, 3/4"	74.67 REQD	6.67 LBS
SEAL FOR 3/4" STRAPPING	6 REQD	NI L
PLYWOOD, 3/8"	11.06 SQ FT REQD	11.41 LBS
PLYWOOD, 5/8"	13.90 SQ FT REQD	23.88 LBS
STAPLE, 1-17/32" X 3/4"	12 REQD	NI L

PALLET UNIT B (W/O METAL LIFTING FRAME)



HARDWOOD BUFFER

(2 REQD)



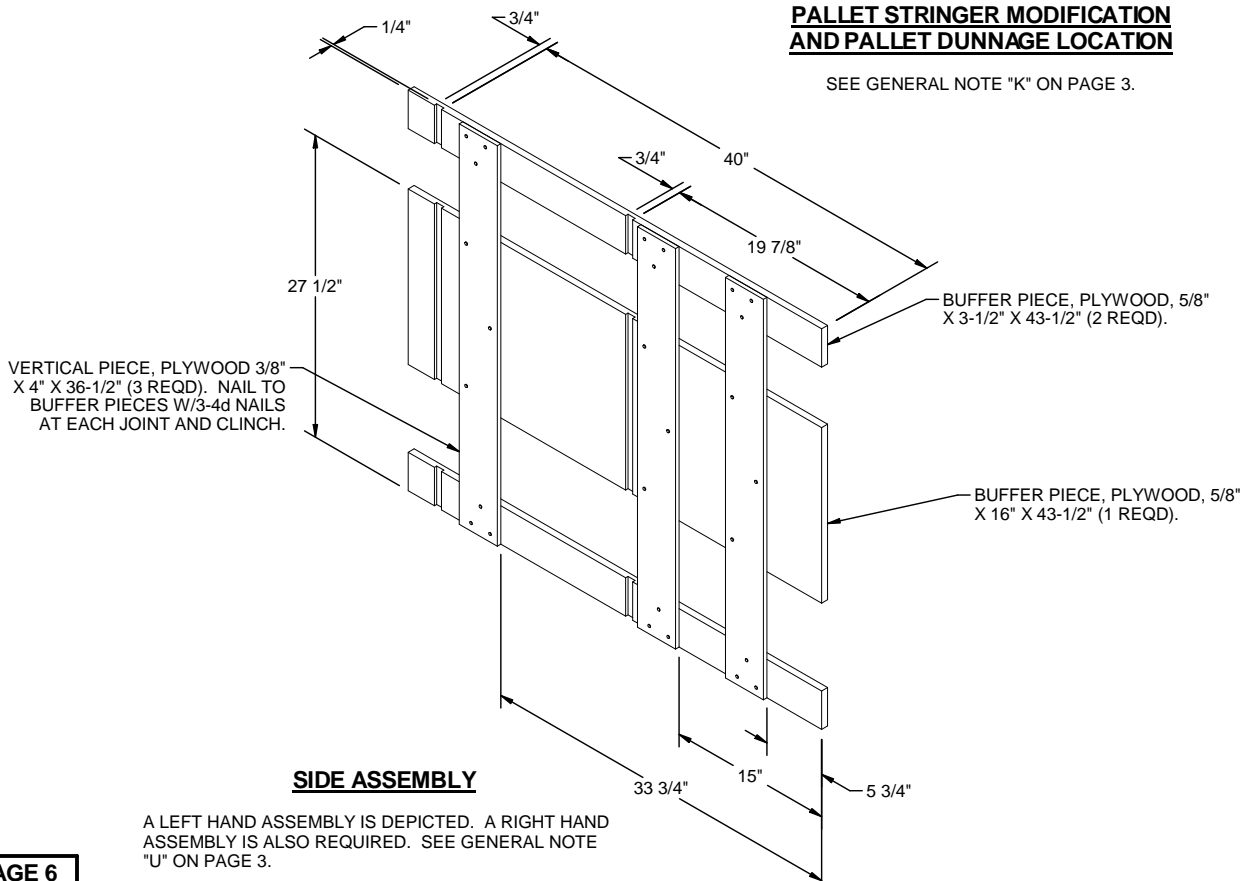
MARK ON TOP OF EACH OUTSIDE BOTTOM DECKBOARD. **NOTE:** THE PRESERVATIVE MARKING MAY BE APPLIED ADJACENT TO THE HEAT TREATMENT MARKING WHEN A TRUSS-NAIL PLATE WILL COVER THIS MARKING. SEE GENERAL NOTE "P" ON PAGE 3.

DECK DUNNAGE, PLYWOOD, 3/8" X 18-1/2" X 38-3/4" (1 REQD). NAIL THRU DECK BOARDS W/6-6d NAILS AND CLINCH.

SPECIAL 40" X 44" PALLET

PALLET STRINGER MODIFICATION AND PALLET DUNNAGE LOCATION

SEE GENERAL NOTE "K" ON PAGE 3.



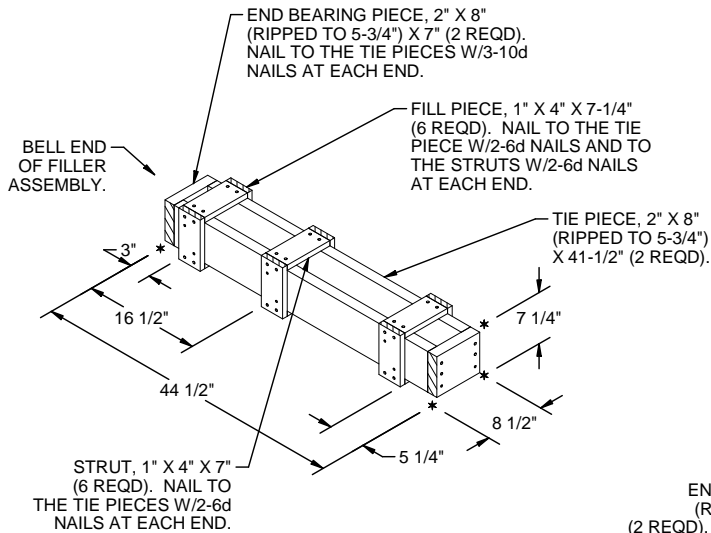
SIDE ASSEMBLY

A LEFT HAND ASSEMBLY IS DEPICTED. A RIGHT HAND ASSEMBLY IS ALSO REQUIRED. SEE GENERAL NOTE "U" ON PAGE 3.

BUFFER PIECE, PLYWOOD, 5/8" X 3-1/2" X 43-1/2" (2 REQD).

BUFFER PIECE, PLYWOOD, 5/8" X 16" X 43-1/2" (1 REQD).

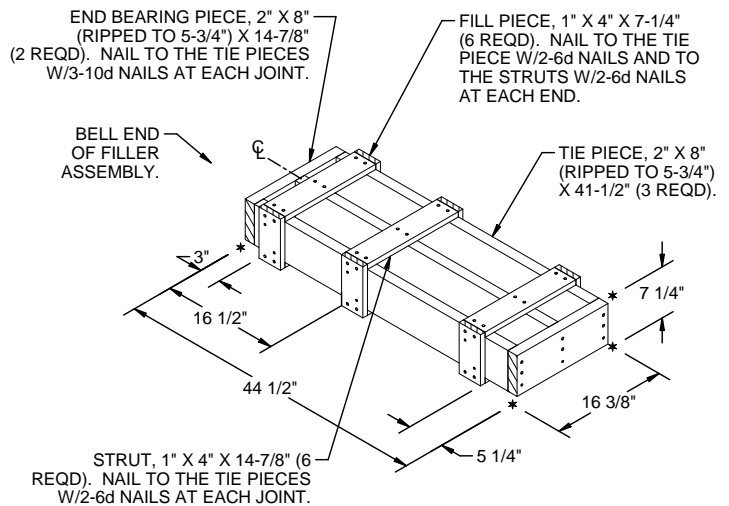
VERTICAL PIECE, PLYWOOD 3/8" X 4" X 36-1/2" (3 REQD). NAIL TO BUFFER PIECES W/3-4d NAILS AT EACH JOINT AND CLINCH.



FILLER A*

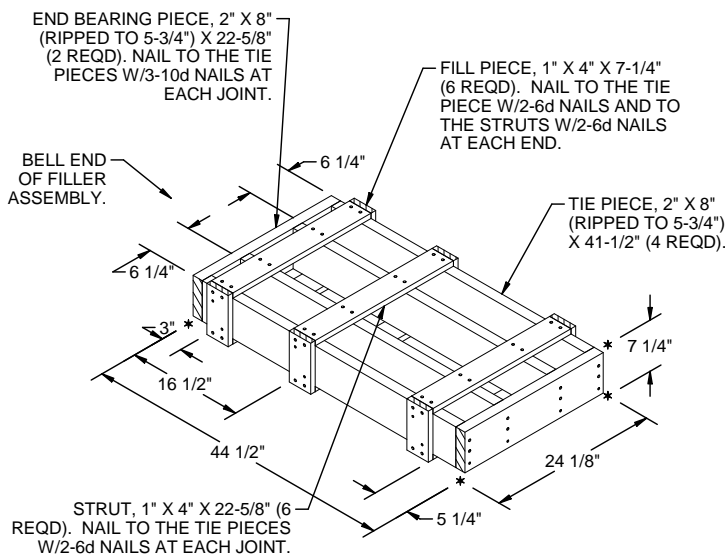
THIS FILLER IS TO BE USED WHEN ONE CONTAINER IS TO BE OMITTED FROM A PALLET UNIT, OR IN COMBINATION WITH OTHER FILLER ASSEMBLIES.

*SEE SPECIAL NOTE 2 ON PAGE 8.



FILLER B

THIS FILLER IS TO BE USED WHEN TWO CONTAINERS ARE TO BE OMITTED FROM A PALLET UNIT, OR IN COMBINATION WITH OTHER FILLER ASSEMBLIES.

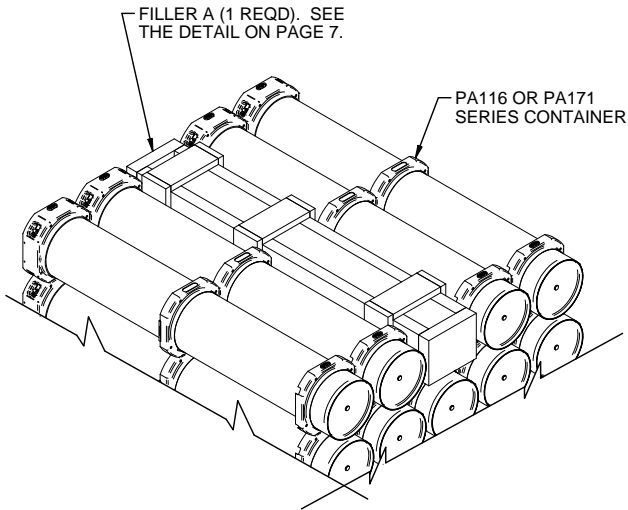


FILLER C

THIS FILLER IS TO BE USED WHEN THREE CONTAINERS ARE TO BE OMITTED FROM A PALLET UNIT, OR IN COMBINATION WITH OTHER FILLER ASSEMBLIES.

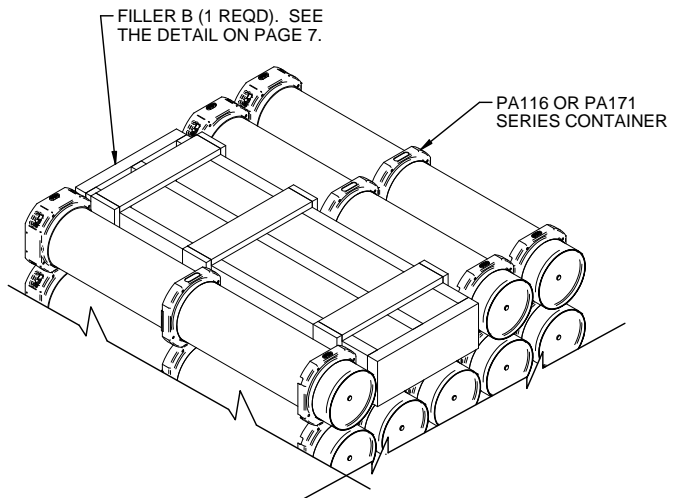
SPECIAL NOTES:

1. WHEN FIVE CONTAINERS ARE TO BE OMITTED FROM A PALLET UNIT, A COMPLETE LAYER OF CONTAINERS WILL BE OMITTED. WHEN FOUR CONTAINERS ARE TO BE OMITTED FROM A PALLET UNIT, A COMBINATION OF FILLER ASSEMBLIES DEPICTED ON PAGE 7 MUST BE USED.
2. WHEN A "FILLER A" ASSEMBLY IS USED IN COMBINATION WITH A "FILLER B" OR "FILLER C" ASSEMBLY THE "FILLER A" ASSEMBLY MUST BE POSITIONED IN THE SECOND LAYER OF CONTAINERS FROM THE TOP OF THE PALLET UNIT AND MUST HAVE ITS OVERALL HEIGHT REDUCED FROM 7-1/4" TO 7" AND ALSO 2" X 6" MATERIAL WILL BE SUBSTITUTED FOR THE 2" X 8" (RIPPED TO 5-3/4") PIECES USED.
3. WHEN TWO "FILLER A" ASSEMBLIES ARE USED IN PLACE OF TWO OMITTED CONTAINERS, THE FILLER ASSEMBLIES WILL BE SEPARATED BY AT LEAST ONE CONTAINER TO INSURE PROPER FILLER ASSEMBLY RETENTION AND TO PRECLUDE ASSEMBLY INTERFERENCES.
4. WHEN TWO OR MORE LAYERS ARE OMITTED, THE BUNDLING STRAP REQUIREMENTS WILL CHANGE. SEE GENERAL NOTE "R" ON PAGE 3.



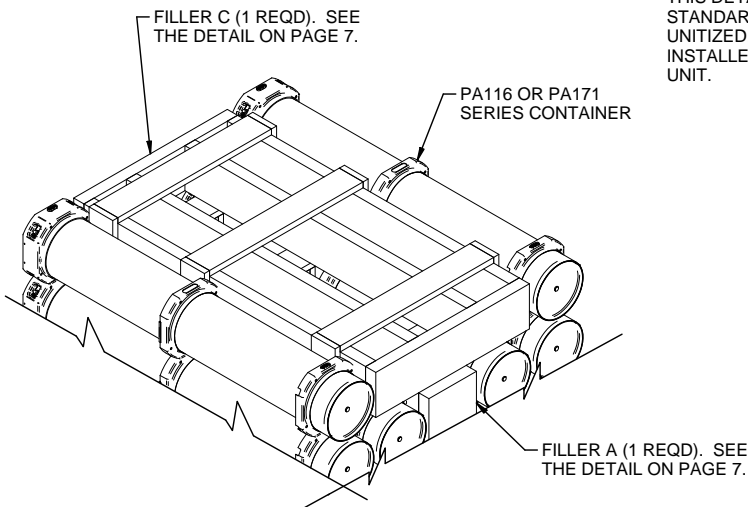
DETAIL A

THIS DETAIL DEPICTS PROCEDURES TO BE USED WHEN A STANDARD PALLET UNIT MINUS ONE CONTAINER IS TO BE UNITIZED. THE FILLER ASSEMBLY DEPICTED MUST BE INSTALLED IN THE MIDDLE OF THE TOP LAYER OF THE PALLET UNIT.



DETAIL B

THIS DETAIL DEPICTS PROCEDURES TO BE USED WHEN A STANDARD PALLET UNIT MINUS TWO CONTAINERS IS TO BE UNITIZED. THE FILLER ASSEMBLY DEPICTED MUST BE INSTALLED IN THE MIDDLE OF THE TOP LAYER OF THE PALLET UNIT.



DETAIL C

THIS DETAIL DEPICTS PROCEDURES TO BE USED WHEN A STANDARD PALLET UNIT MINUS FOUR CONTAINERS IS TO BE UNITIZED. THE FILLER ASSEMBLY DEPICTED MUST BE INSTALLED IN THE MIDDLE OF THE TOP LAYERS OF THE PALLET UNIT.