

APPENDIX 6

UNITIZING PROCEDURES FOR COMPLETE ROUNDS PACKED IN CYLINDRICAL METAL CONTAINERS ON 4-WAY ENTRY PALLETS PA 104 SERIES CONTAINERS

INDEX

<u>ITEM</u>	<u>PAGE (S)</u>
GENERAL NOTES -----	2
UNIT DETAIL -----	4
DUNNAGE DETAILS -----	5
FILLERS AND INSTALLATION PROCEDURES FOR OMITTED CONTAINERS -----	6, 7

REVISIONS

REVISION NO. 1, DATED JULY 1983, CONSISTS OF:

ADDING ITEM BY NATIONAL STOCK NUMBER TO "PALLET UNIT DATA" CHART.

REVISION NO. 2, DATED SEPTEMBER 1985, CONSISTS OF:

DELETING DECREASED PALLET HEIGHT NOTE.

PALLET UNIT DATA						
ITEMS INCLUDED		HAZARD CLASSIFICATION ^①				WEIGHT (LBS)
NSN	DODIC	DOT CLASS	CG CLASS	QD CLASS	COMP GROUP	
1315- 01-136-9631	C524	B	II-B	(08) 1.2	C	2,408

NOTICE: THIS APPENDIX CANNOT STAND ALONE BUT MUST BE USED IN CONJUNCTION WITH THE BASIC UNITIZATION PROCEDURES DRAWING 19-48-4079-20PM1002.

① HAZARD CLASSIFICATION DATA CONTAINED IN THE ABOVE CHART IS FOR GUIDANCE AND INFORMATIONAL PURPOSES ONLY. VERIFICATION OF THE SPECIFIED DATA SHOULD BE MADE BY CONSULTING THE MOST RECENT JOINT HAZARD CLASSIFICATION SYSTEM LISTING OR OTHER APPROVED LISTING(S).

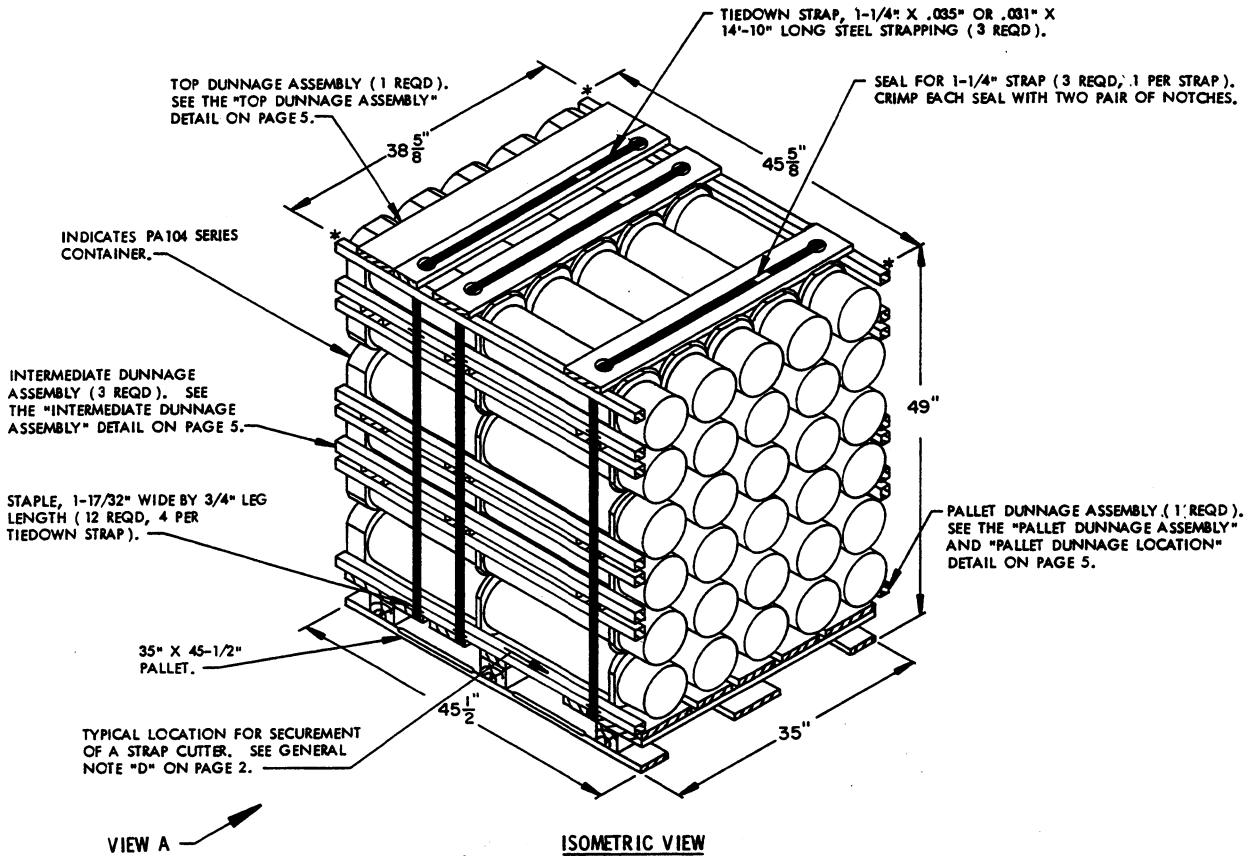
REVISIONS				DATE	BY	CHKD BY	FILED BY
1	JULY 83	<i>[Signature]</i>	<i>[Signature]</i>				
2	SEP 85	<i>[Signature]</i>	<i>[Signature]</i>				
				APPROVED BY ORDER OF COMMANDER GENERAL, U. S. ARMY MATERIAL DEVELOPMENT AND READINESS COMMAND DARCOM <i>William F. Conatz</i> U. S. ARMY DEFENSE ADMINISTRATION CENTER AND SCHOOL U. S. ARMY DARCOM DRAWING DECEMBER 1982			
		CLASS	DIVISION	DRAWING	FILE		
		19	48	4079/ 6	20PM 1002		

DO NOT SCALE

GENERAL NOTES

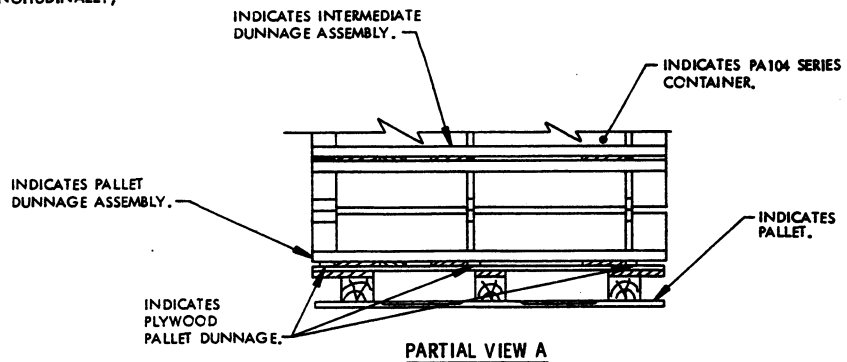
- A. THIS APPENDIX CANNOT STAND ALONE BUT MUST BE USED IN CONJUNCTION WITH THE BASIC UNITIZING PROCEDURES DRAWING 19-48-4079-20PM1002. TO PRODUCE AN APPROVED UNIT LOAD, ALL PERTINENT PROCEDURES, SPECIFICATIONS AND CRITERIA SET FORTH WITHIN THE BASIC DRAWING WILL APPLY TO THE PROCEDURES DELINEATED IN THIS APPENDIX. ANY EXCEPTIONS TO THE BASIC PROCEDURES ARE SPECIFIED IN THIS APPENDIX.
- B. DIMENSIONS, CUBE AND WEIGHT OF A PALLET UNIT WILL VARY SLIGHTLY DEPENDING UPON THE ACTUAL DIMENSIONS OF THE CONTAINER, WEIGHT OF THE SPECIFIED ITEM AND METHOD OF UNITIZATION.
- C. FOR OUTLOADING AND STORAGE OF THE ITEMS COVERED BY THIS APPENDIX, SEE DARCOM DRAWING 19-48-4079-1-2-5-11-14PM1001 (WILL BE SUPERSEDED BY ANOTHER 19-48 SERIES DARCOM DRAWING SPECIFICALLY FOR THE DEPICTED CONTAINER).
- D. FOR METHOD OF SECURING A STRAP CUTTER TO THE PALLET UNIT, SEE DARCOM DRAWING 19-48-4127-20P1000.
- E. IF ITEMS COVERED HEREIN ARE UNITIZED PRIOR TO ISSUANCE OF THIS APPENDIX, THE CONTAINERS NEED NOT BE REUNITIZED SOLELY TO CONFORM TO THIS APPENDIX.
- F. FOR DETAILS OF THE PA 104 SERIES CONTAINER, SEE US ARMY ARMAMENT RESEARCH AND DEVELOPMENT COMMAND DRAWING NO. 9845267.
- CONTAINER DIMENSIONS ————— 45-5/8" LONG X 7-1/8" WIDE X 7-1/8" HIGH
CONTAINER CUBE ————— 1.3 CUBIC FEET (APPROX)
CONTAINER WEIGHT
(WITH ROUND) ————— 75 POUNDS (APPROX)
- G. THE UNITIZATION PROCEDURES SPECIFIED HEREIN MAY ALSO BE USED FOR UNITIZING COMPLETE ROUNDS WHEN IDENTIFIED BY DIFFERENT NATIONAL STOCK NUMBERS (NSN) THAN THOSE SHOWN ON THE COVER PAGE, PROVIDED THE ITEM IS PACKED IN THE SAME CONTAINER. THE EXPLOSIVE CLASSIFICATION OF OTHER ITEMS MAY BE DIFFERENT THAN THOSE SHOWN.
- H. DIMENSIONS GIVEN FOR DUNNAGE PIECES OR DUNNAGE ASSEMBLIES WILL BE FIELD CHECKED PRIOR TO THEIR ASSEMBLY TO THE PALLET UNIT. CONTAINERS MUST FIT SNUGLY IN THE DUNNAGE ASSEMBLIES. ALSO, DUE TO THE VARIATION OF CONTAINER DIMENSIONS, ADJUSTMENTS MAY BE REQUIRED AS TO THE LOCATION OF CERTAIN PIECES OF DUNNAGE IN A DUNNAGE ASSEMBLY.

THIS PAGE HAS BEEN INTENTIONALLY LEFT BLANK.



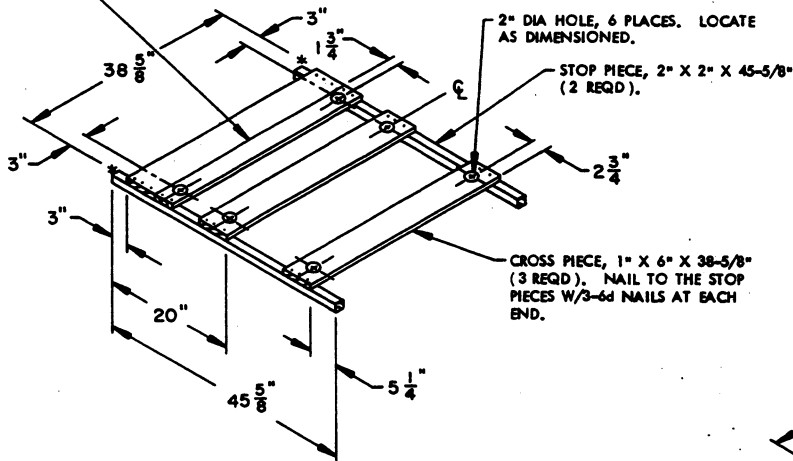
SPECIAL NOTES:

1. WHEN THE UNIT LOAD DEPICTED ABOVE IS TO BE USED FOR UNITIZING MARINE CORPS AMMUNITION, ONE LAYER OF CONTAINERS MUST BE OMITTED, THE UPPERMOST "INTERMEDIATE DUNNAGE ASSEMBLY" MUST BE OMITTED, AND THE TIEDOWN STRAP LENGTHS MUST BE DECREASED TO 13'-7". THIS WILL RESULT IN AN OVERALL UNIT HEIGHT OF 41-7/8", A GROSS UNIT WEIGHT OF 2,015 POUNDS, AND A UNIT CUBE OF 42.7 CUBIC FEET.
2. ALTHOUGH THE CONTAINERS DEPICTED IN THE UNIT LOAD ABOVE ARE CONSTRUCTED WITH INTERLOCKING DEVICES, THE INTERLOCKS WILL NOT FUNCTION PROPERLY UNLESS THE CONTAINERS ARE POSITIONED SO THAT THE "PINS" OF THE INTERLOCKS ARE IN AN UPRIGHT ORIENTATION. THIS ORIENTATION WILL PRECLUDE INTERFERENCE OF THE "PINS" AND THE PLYWOOD PALLET DUNNAGE AND WILL AID IN THE PREVENTION OF CONTAINER MOVEMENT BOTH Laterally AND LONGITUDINALLY, DURING SHIPMENT OF THE UNIT LOAD.

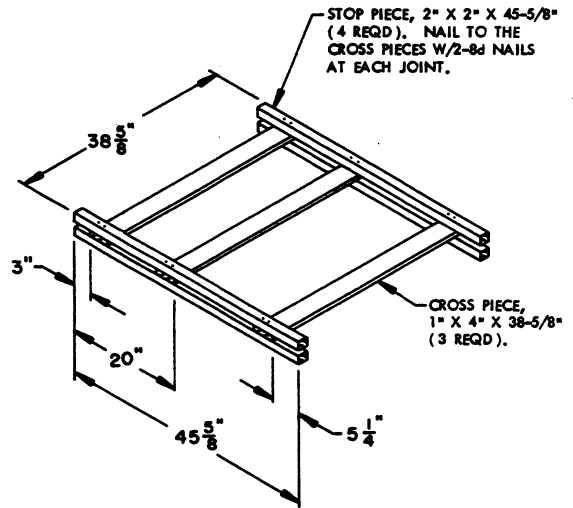


UNIT DETAIL

CROSS PIECE, 1" X 4" X 38-5/8"
(1 REQD). NAIL TO THE STOP
PIECES W/2-6d NAILS AT
EACH END.

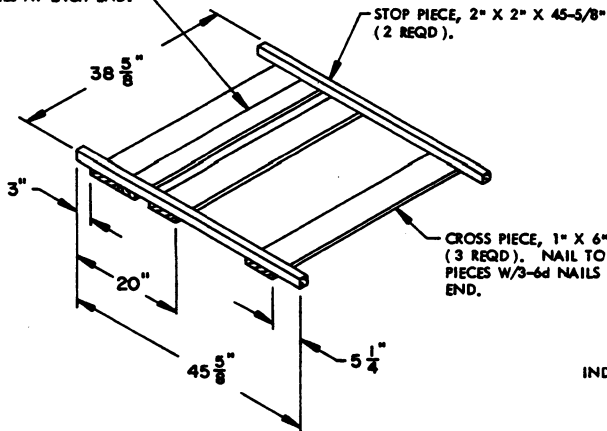


TOP DUNNAGE ASSEMBLY
(1 REQD)

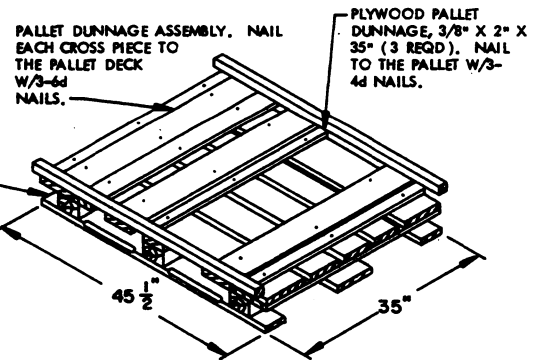


INTERMEDIATE DUNNAGE ASSEMBLY
(3 REQD)

CROSS PIECE, 1" X 4" X 38-5/8"
(1 REQD). NAIL TO THE STOP
PIECES W/2-6d NAILS AT
EACH END.



PALLET DUNNAGE ASSEMBLY
(1 REQD)



PALLET DUNNAGE LOCATION

BILL OF MATERIAL		
LUMBER	LINEAR FEET	BOARD FEET
1" X 4"	35.41	11.80
1" X 6"	19.31	9.66
2" X 2"	60.83	20.28
NAILS	NO. REQD	POUNDS
4d (1-1/2")	9	0.03
6d (2")	56	0.33
8d (2-1/2")	72	0.76
PALLET, 35" X 45-1/2"	1 REQD	65 LBS
STEEL STRAPPING, 1-1/4"	44.50' REQD	6.36 LBS
SEAL FOR 1-1/4" STRAPPING	3 REQD	NIL
STAPLE, 1-17/32" X 3/4"	12 REQD	NIL
PLYWOOD, 3/8"	1.46 SQ FT REQD	1.51 LBS

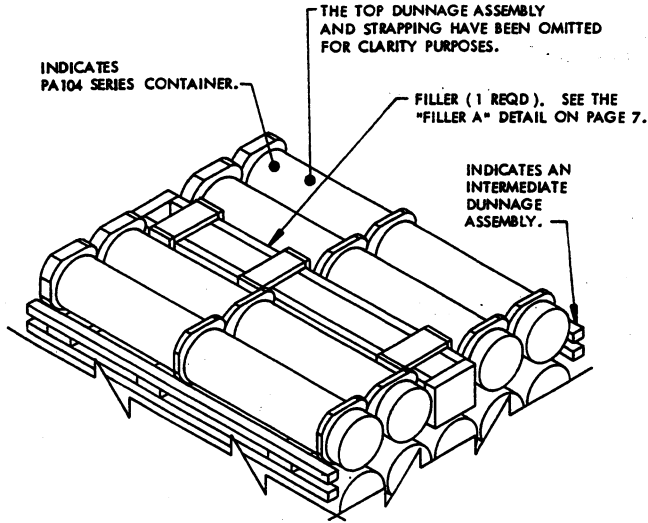
UNIT DATA

CUBE	50.0 CUBIC FEET (APPROX)	
CONTAINER	30 EACH @ 75 LBS	2,250 LBS (APPROX)
DUNNAGE		93 LBS
PALLET		65 LBS

TOTAL WEIGHT-----2,408 LBS (APPROX)

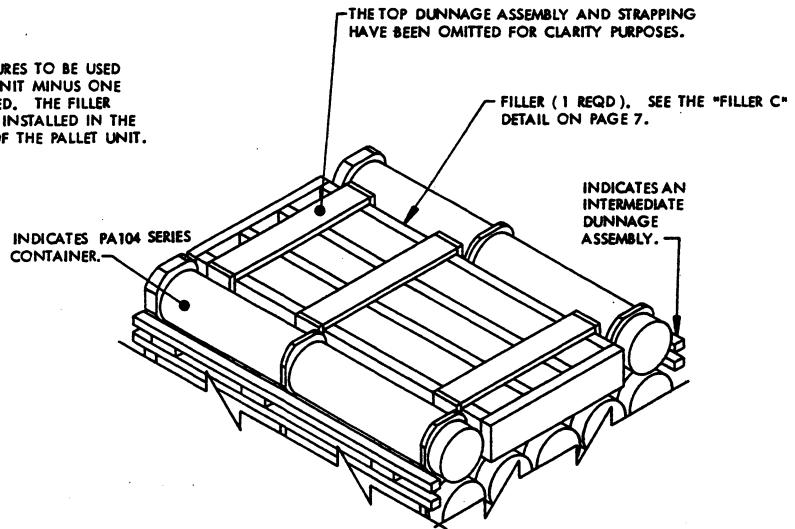
SPECIAL NOTES:

1. WHEN FIVE CONTAINERS ARE TO BE OMITTED FROM A PALLET UNIT, A COMPLETE LAYER OF CONTAINERS MUST BE OMITTED. WHEN FOUR CONTAINERS ARE TO BE OMITTED FROM A PALLET UNIT, A COMBINATION OF FILLER ASSEMBLIES DEPICTED ON PAGE 7 MUST BE USED. WHEN THREE OR LESS CONTAINERS ARE TO BE OMITTED FROM A PALLET UNIT, A COMBINATION OR ONE OF THE FILLER ASSEMBLIES DEPICTED ON PAGE 7 MAY BE USED. ALL FILLER ASSEMBLIES MUST BE INSTALLED IN THE MIDDLE OF THE TOP LAYER OR LAYERS OF A PALLET UNIT.
2. THE OVERALL HEIGHT OF THE FILLER ASSEMBLIES DEPICTED ON PAGE 7 MUST BE REDUCED FROM 7" TO 6-1/4" WHEN INSTALLED BETWEEN A TOP DUNNAGE ASSEMBLY AND AN INTERMEDIATE DUNNAGE ASSEMBLY OR BETWEEN ANOTHER FILLER ASSEMBLY AND AN INTERMEDIATE DUNNAGE ASSEMBLY.



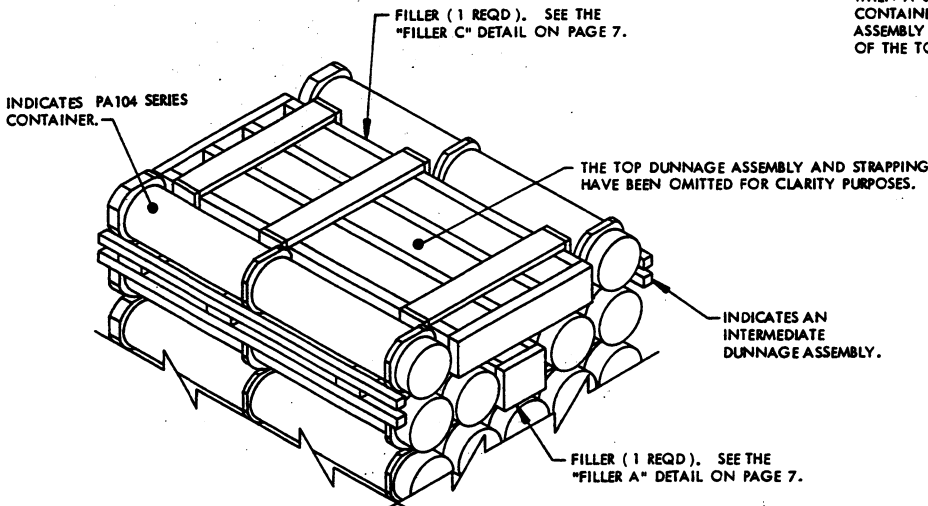
DETAIL A

THIS DETAIL DEPICTS PROCEDURES TO BE USED WHEN A STANDARD PALLET UNIT MINUS ONE CONTAINER IS TO BE UNITIZED. THE FILLER ASSEMBLY DEPICTED MUST BE INSTALLED IN THE MIDDLE OF THE TOP LAYER OF THE PALLET UNIT.



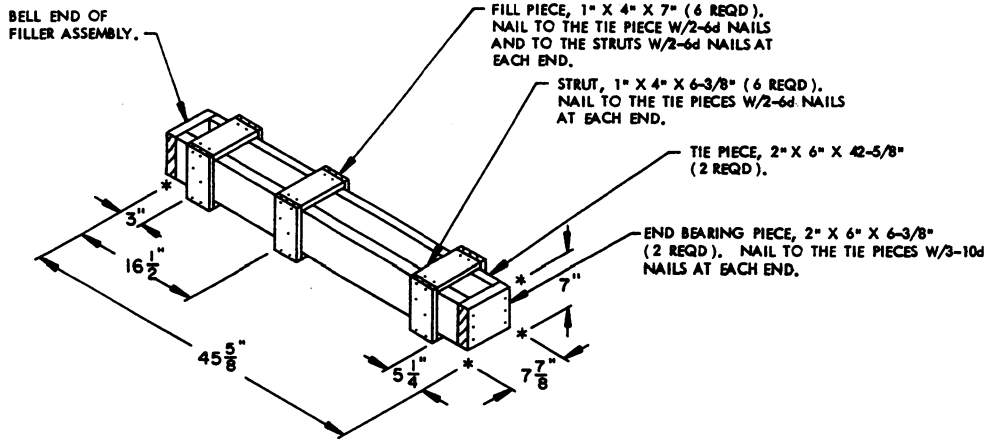
DETAIL B

THIS DETAIL DEPICTS PROCEDURES TO BE USED WHEN A STANDARD PALLET UNIT MINUS THREE CONTAINERS IS TO BE UNITIZED. THE FILLER ASSEMBLY MUST BE INSTALLED IN THE MIDDLE OF THE TOP LAYER OF THE PALLET UNIT.



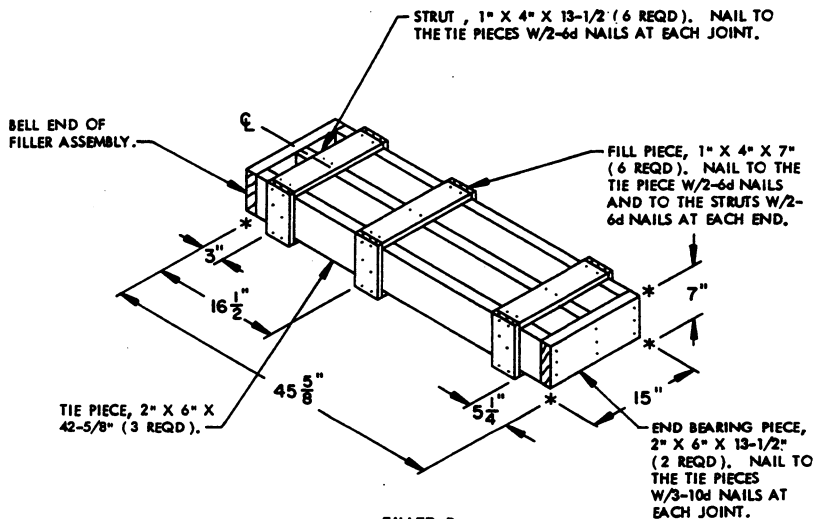
DETAIL C

THIS DETAIL DEPICTS PROCEDURES TO BE USED WHEN A STANDARD PALLET UNIT MINUS FOUR CONTAINERS IS TO BE UNITIZED. THE FILLER ASSEMBLIES DEPICTED MUST BE INSTALLED IN THE MIDDLE OF THE TOP LAYERS OF THE PALLET UNIT.



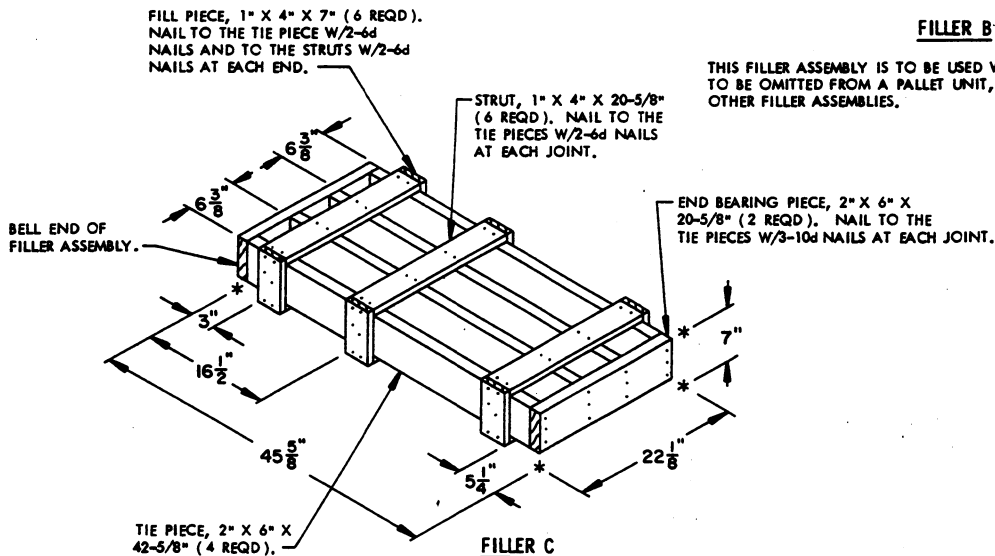
FILLER A

THIS FILLER ASSEMBLY IS TO BE USED WHEN ONE CONTAINER IS TO BE OMITTED FROM A PALLET UNIT, OR IN COMBINATION WITH OTHER FILLER ASSEMBLIES.



FILLER B

THIS FILLER ASSEMBLY IS TO BE USED WHEN TWO CONTAINERS ARE TO BE OMITTED FROM A PALLET UNIT, OR IN COMBINATION WITH OTHER FILLER ASSEMBLIES.



FILLER C

THIS FILLER ASSEMBLY IS TO BE USED WHEN THREE CONTAINERS ARE TO BE OMITTED FROM A PALLET UNIT, OR IN COMBINATION WITH OTHER FILLER ASSEMBLIES.

FILLER AND INSTALLATION PROCEDURES FOR OMITTED CONTAINERS

