

APPENDIX 5

UNITIZING PROCEDURES FOR COMPLETE ROUNDS PACKED IN CYLINDRICAL METAL CONTAINERS ON 4-WAY ENTRY PALLETS PA98 SERIES CONTAINER

INDEX

<u>ITEM</u>	<u>PAGE (S)</u>
GENERAL NOTES -----	2
UNIT DETAIL -----	4
DUNNAGE DETAILS -----	5
FILLERS AND INSTALLATION PROCEDURES FOR OMITTED CONTAINERS -----	6,7

PALLET UNIT DATA						
ITEMS INCLUDED		HAZARD CLASSIFICATION				WEIGHT (LBS)
NSN	DODIC	DOT CLASS	CG CLASS	QD CLASS	COMP GROUP	
UNASSIGNED	---	---	---	---	---	2,795

NOTICE: THIS APPENDIX CANNOT STAND ALONE BUT MUST BE USED IN CONJUNCTION WITH THE BASIC UNITIZATION PROCEDURES DRAWING 19-48-4079-20PM1002.

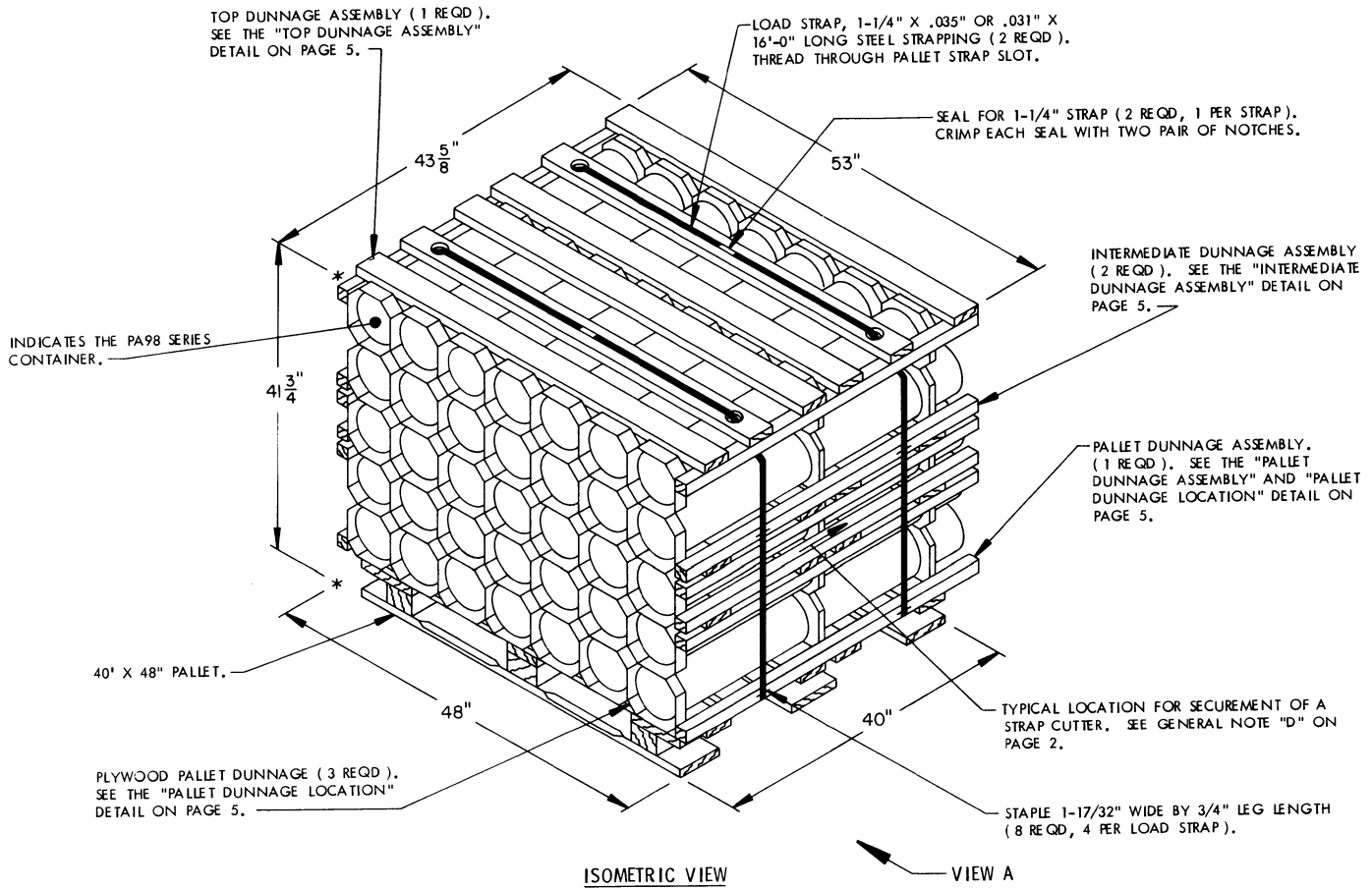
REVISIONS				DRAFTSMAN BL / <i>alt</i>	PROJ. ENG. WRS / <i>MMW</i>
				CHECKER GRG /	LOW ERROR OFFICE W & <i>Cont</i>
				APPROVED, U. S. ARMY ARMAMENT MATERIEL READINESS COMMAND	
				<i>W. H. Benton</i> / <i>John X. Reynolds</i> DRAWN BY: <i>W. H. Benton</i> / <i>John X. Reynolds</i> / <i>John X. Reynolds</i> APPROVED BY ORDER OF COMMANDING GENERAL, U. S. ARMY MATERIEL DEVELOPMENT AND READINESS COMMAND (DARCOM) U. S. ARMY DEFENSE AMMUNITION CENTER AND SCHOOL	
U. S. ARMY DARCOM DRAWING					
MAY 1983					
CLASS	DIVISION	DRAWING	FILE		
19	48	4079/ 5	20PM 1002		

DO NOT SCALE

GENERAL NOTES

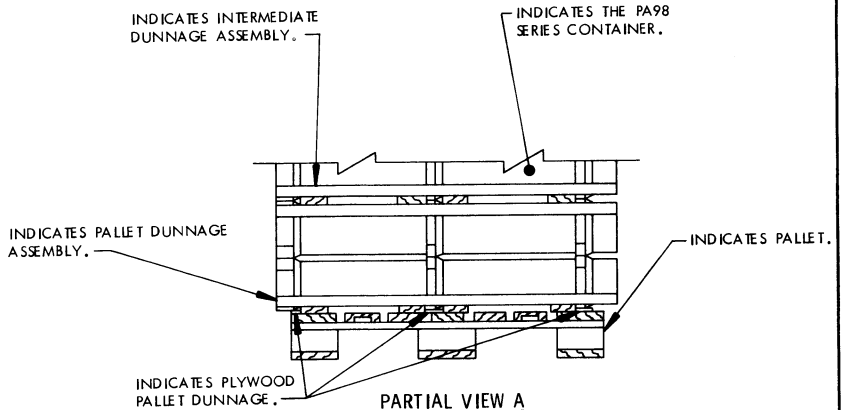
- A. THIS APPENDIX CANNOT STAND ALONE BUT MUST BE USED IN CONJUNCTION WITH THE BASIC UNITIZING PROCEDURES DRAWING 19-48-4079-20PM1002. TO PRODUCE AN APPROVED UNIT LOAD, ALL PERTINENT PROCEDURES, SPECIFICATIONS AND CRITERIA SET FORTH WITHIN THE BASIC DRAWING WILL APPLY TO THE PROCEDURES DELINEATED IN THIS APPENDIX. ANY EXCEPTIONS TO THE BASIC PROCEDURES ARE SPECIFIED IN THIS APPENDIX.
- B. DIMENSIONS, CUBE AND WEIGHT OF A PALLET UNIT WILL VARY SLIGHTLY DEPENDING UPON THE ACTUAL DIMENSIONS OF THE CONTAINER, WEIGHT OF THE SPECIFIED ITEM AND METHOD OF UNITIZATION.
- C. FOR OUTLOADING AND STORAGE OF THE ITEMS COVERED BY THIS APPENDIX, SEE DARCOM DRAWING 19-48-4079-1-2-5-11-14PM1001 (WILL BE SUPERSEDED BY ANOTHER 19-48 SERIES DARCOM DRAWING SPECIFICALLY FOR THE PA98 SERIES CONTAINER).
- D. FOR THE METHOD OF SECURING A STRAP CUTTER TO THE PALLET UNIT, SEE DARCOM DRAWING 19-48-4127-20P1000.
- E. IF ITEMS COVERED HEREIN ARE UNITIZED PRIOR TO ISSUANCE OF THIS APPENDIX, THE CONTAINERS NEED NOT BE REUNITIZED SOLELY TO CONFORM TO THIS APPENDIX.
- F. FOR DETAILS OF THE PA98 SERIES CONTAINER, SEE US ARMY ARMAMENT RESEARCH AND DEVELOPMENT COMMAND DRAWING NO. 9331203.
- CONTAINER DIMENSIONS ----- 43-5/8" LONG X 7-1/8" WIDE X 7-1/8" HIGH
CONTAINER CUBE ----- 1.3 CUBIC FEET (APPROX)
CONTAINER WEIGHT
(WITH ROUND) ----- 75 POUNDS (APPROX)
- G. THE UNITIZATION PROCEDURES SPECIFIED HEREIN MAY ALSO BE USED FOR UNITIZING COMPLETE ROUNDS WHEN IDENTIFIED BY DIFFERENT NATIONAL STOCK NUMBERS (NSN) THAN THOSE SHOWN ON THE COVER PAGE, PROVIDED THE ITEM IS PACKED IN THE PA98 SERIES CONTAINER. THE EXPLOSIVE CLASSIFICATION OF OTHER ITEMS MAY BE DIFFERENT THAN THOSE SHOWN.
- H. DIMENSIONS GIVEN FOR DUNNAGE PIECES OR DUNNAGE ASSEMBLIES WILL BE FIELD CHECKED PRIOR TO THEIR ASSEMBLY TO THE PALLET UNIT. CONTAINERS MUST FIT SNUGLY IN THE DUNNAGE ASSEMBLIES. ALSO, DUE TO THE VARIATION OF CONTAINER DIMENSIONS, ADJUSTMENTS MAY BE REQUIRED AS TO THE LOCATION OF CERTAIN PIECES OF DUNNAGE IN A DUNNAGE ASSEMBLY.

THIS PAGE HAS BEEN INTENTIONALLY LEFT BLANK.

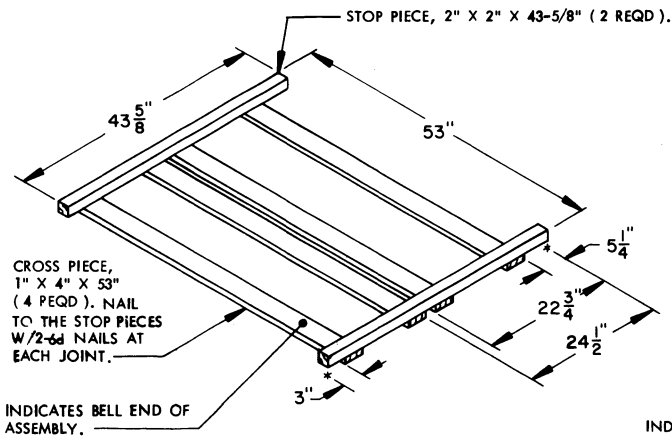


SPECIAL NOTE:

ALTHOUGH THE CONTAINERS DEPICTED IN THE UNIT LOAD ABOVE ARE CONSTRUCTED WITH INTERLOCKING DEVICES, THE INTERLOCKS WILL NOT FUNCTION PROPERLY UNLESS THE CONTAINERS ARE POSITIONED SO THAT THE "PINS" OF THE INTERLOCKS ARE IN AN UPRIGHT ORIENTATION. THIS ORIENTATION WILL PRECLUDE INTERFERENCE OF THE "PINS" AND THE PLYWOOD PALLET DUNNAGE AND WILL AID IN THE PREVENTION OF CONTAINER MOVEMENT, BOTH Laterally AND LONGITUDINALLY, DURING SHIPMENT OF THE UNIT LOAD.



UNIT DETAIL



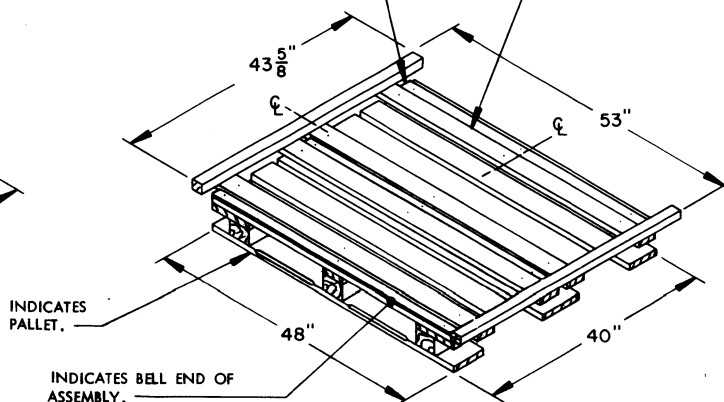
CROSS PIECE, 1" X 4" X 53" (4 REQD). NAIL TO THE STOP PIECES W/2-6d NAILS AT EACH JOINT.

INDICATES BELL END OF ASSEMBLY.

PALLET DUNNAGE ASSEMBLY
(1 REQD)

PLYWOOD PALLET DUNNAGE, 3/8" X 1-1/2" X 48" (3 REQD). NAIL TO THE PALLET DECK W/3-4d NAILS.

PALLET DUNNAGE ASSEMBLY. NAIL EACH CROSS PIECE TO THE PALLET DECK W/3-6d NAILS. DO NOT NAIL THROUGH THE STRAP SLOTS.

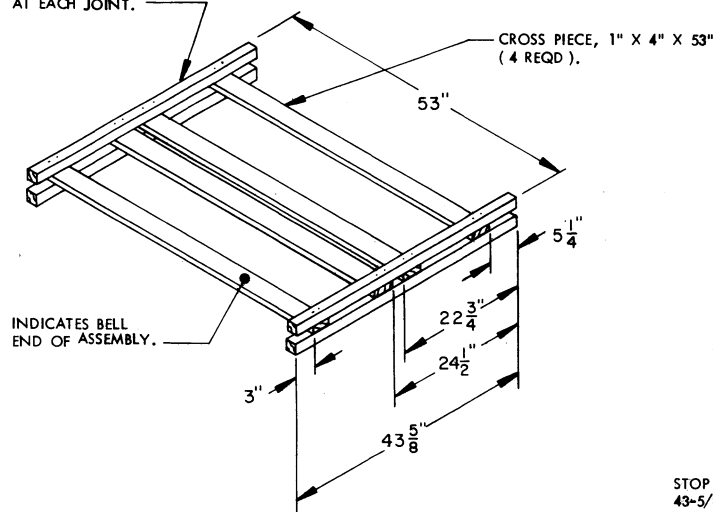


INDICATES PALLET.

INDICATES BELL END OF ASSEMBLY.

PALLET DUNNAGE LOCATION

STOP PIECE, 2" X 2" X 43-5/8" (4 REQD). NAIL TO THE CROSS PIECES W/2-8d NAILS AT EACH JOINT.



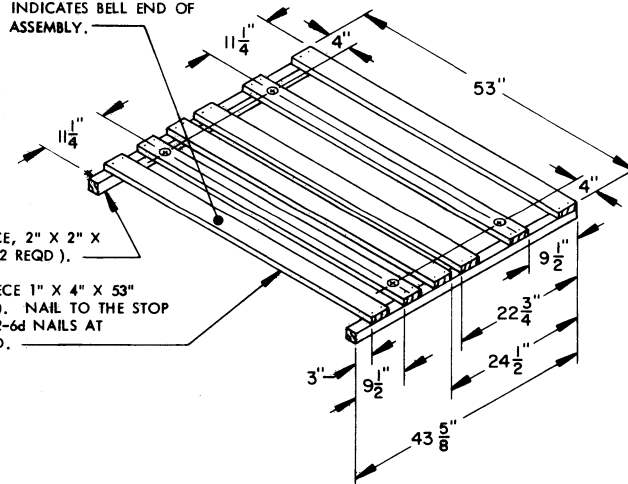
INDICATES BELL END OF ASSEMBLY.

INTERMEDIATE DUNNAGE ASSEMBLY
(2 REQD)

INDICATES BELL END OF ASSEMBLY.

STOP PIECE, 2" X 2" X 43-5/8" (2 REQD).

CROSS PIECE 1" X 4" X 53" (6 REQD). NAIL TO THE STOP PIECE W/2-6d NAILS AT EACH END.



TOP DUNNAGE ASSEMBLY
(1 REQD)

BILL OF MATERIAL		
LUMBER	LINEAR FEET	BOARD FEET
1" X 4"	79.50	26.50
2" X 2"	43.62	14.54
NAILS	NO. REQD	POUNDS
4d (1-1/2")	9	0.03
6d (2")	52	0.31
8d (2-1/2")	64	0.68
PALLET, 40" X 48" ----- 1 REQD----- 80 LBS STEEL STRAPPING, 1-1/4" X .035" OR .031"--- 32.00' REQD -- 4.57 LBS SEAL FOR 1-1/4" STRAPPING ----- 2 REQD----- NIL STAPLE, 1-17/32" X 3/4" ----- 12 REQD----- NIL PLYWOOD, 3/8" ----- 1.50 SQ FT-REQD-- 1.55 LBS		

UNIT DATA

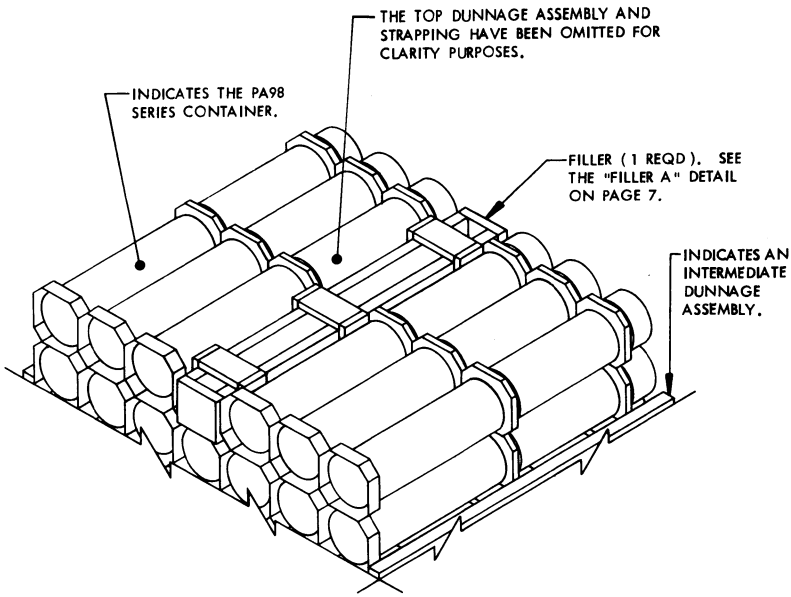
WEIGHT

CUBE -----	55.9 CUBIC FEET (APPROX)	
CONTAINER, PA98 SERIES -----	35 EACH @ 75 LBS -----	2,625 LBS (APPROX)
DUNNAGE -----		90 LBS
PALLET -----		80 LBS

TOTAL WEIGHT ----- 2,795 LBS (APPROX)

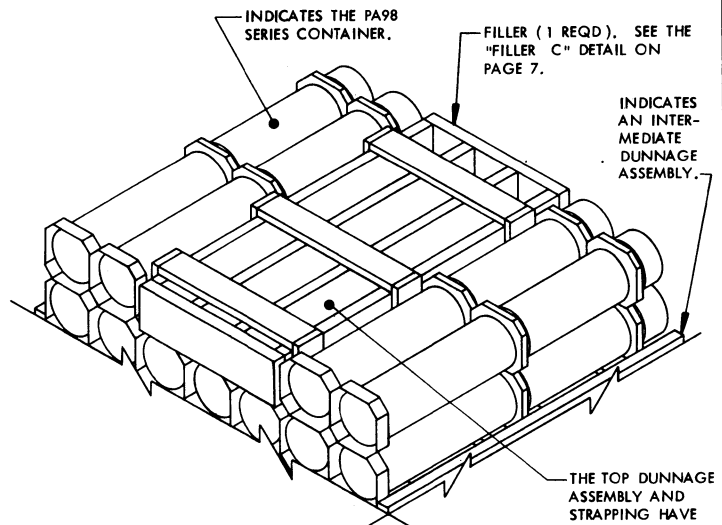
SPECIAL NOTES:

1. WHEN SEVEN CONTAINERS ARE TO BE OMITTED FROM A PALLET UNIT, A COMPLETE LAYER OF CONTAINERS MUST BE OMITTED. WHEN SIX CONTAINERS ARE TO BE OMITTED FROM A PALLET UNIT, A COMBINATION OF FILLER ASSEMBLIES DEPICTED ON PAGE 7 MUST BE USED. WHEN FIVE OR LESS CONTAINERS ARE TO BE OMITTED FROM A PALLET UNIT, A COMBINATION OR ONE OF THE FILLER ASSEMBLIES DEPICTED ON PAGE 7 MAY BE USED. ALL FILLER ASSEMBLIES MUST BE INSTALLED IN THE MIDDLE OF THE TOP LAYER OR LAYERS OF A PALLET UNIT.
2. THE OVERALL HEIGHT OF THE FILLER ASSEMBLIES DEPICTED ON PAGE 7 MUST BE REDUCED FROM 7" TO 6-1/4" WHEN INSTALLED BETWEEN A TOP DUNNAGE ASSEMBLY AND AN INTERMEDIATE DUNNAGE ASSEMBLY OR BETWEEN ANOTHER FILLER ASSEMBLY AND AN INTERMEDIATE DUNNAGE ASSEMBLY.



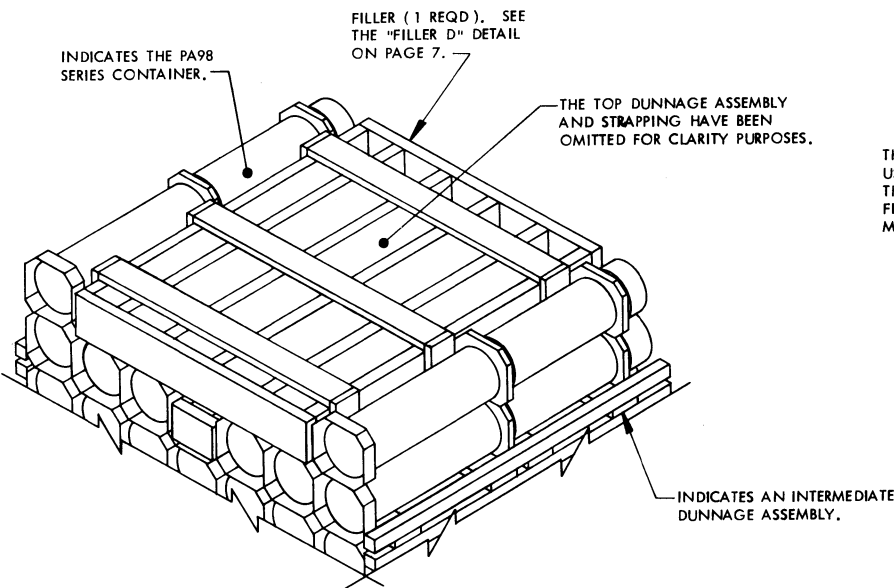
DETAIL A

THIS DETAIL DEPICTS PROCEDURES TO BE USED WHEN A STANDARD PALLET UNIT MINUS ONE CONTAINER IS TO BE UNITIZED. THE FILLER ASSEMBLY DEPICTED MUST BE INSTALLED IN THE MIDDLE OF THE TOP LAYER OF THE PALLET UNIT.



DETAIL B

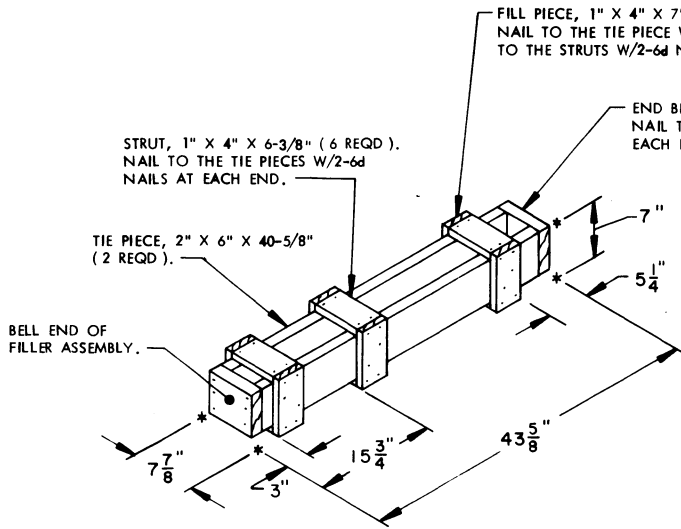
THIS DETAIL DEPICTS PROCEDURES TO BE USED WHEN A STANDARD PALLET UNIT MINUS THREE CONTAINERS IS TO BE UNITIZED. THE FILLER ASSEMBLY MUST BE INSTALLED IN THE MIDDLE OF THE TOP LAYER OF THE PALLET UNIT.



DETAIL C

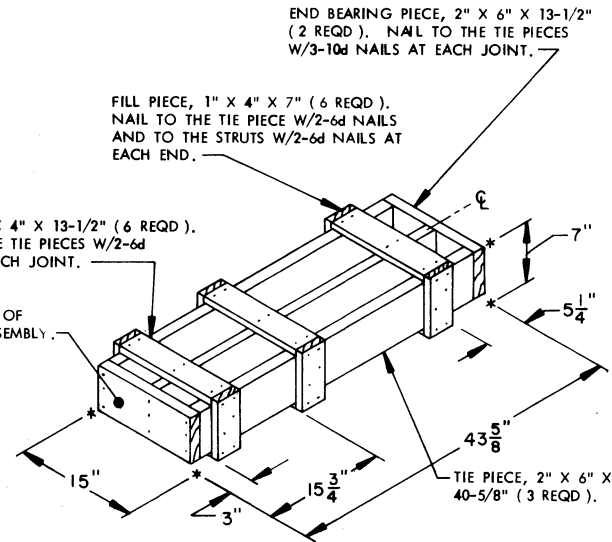
THIS DETAIL DEPICTS PROCEDURES TO BE USED WHEN A STANDARD PALLET UNIT MINUS SIX CONTAINERS IS TO BE UNITIZED. THE FILLER ASSEMBLIES DEPICTED MUST BE INSTALLED IN THE MIDDLE OF THE TOP LAYERS OF THE PALLET UNIT.

FILLERS AND INSTALLATION PROCEDURES FOR OMITTED CONTAINERS



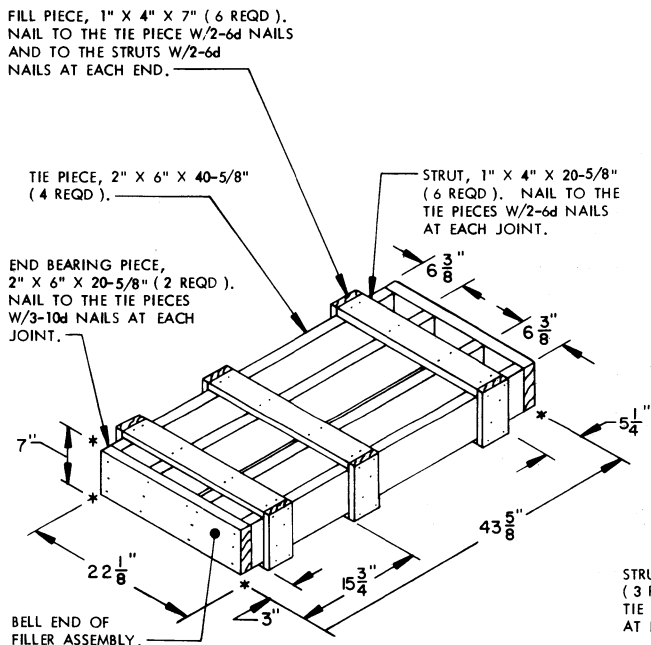
FILLER A

THIS FILLER ASSEMBLY IS TO BE USED WHEN ONE CONTAINER IS TO BE OMITTED FROM A PALLET UNIT, OR IN COMBINATION WITH OTHER FILLER ASSEMBLIES.



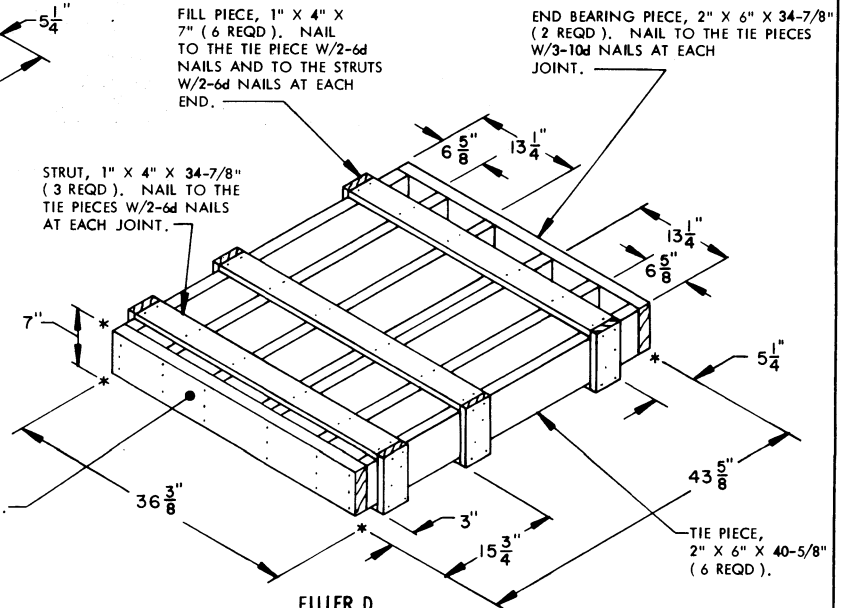
FILLER B

THIS FILLER ASSEMBLY IS TO BE USED WHEN TWO CONTAINERS ARE TO BE OMITTED FROM A PALLET UNIT, OR IN COMBINATION WITH OTHER FILLER ASSEMBLIES.



FILLER C

THIS FILLER ASSEMBLY IS TO BE USED WHEN THREE CONTAINERS ARE TO BE OMITTED FROM A PALLET UNIT, OR IN COMBINATION WITH OTHER FILLER ASSEMBLIES.



FILLER D

THIS FILLER ASSEMBLY IS TO BE USED WHEN FIVE CONTAINERS ARE TO BE OMITTED FROM A PALLET UNIT, OR IN COMBINATION WITH OTHER FILLER ASSEMBLIES.

FILLER AND INSTALLATION PROCEDURES FOR OMITTED CONTAINERS

