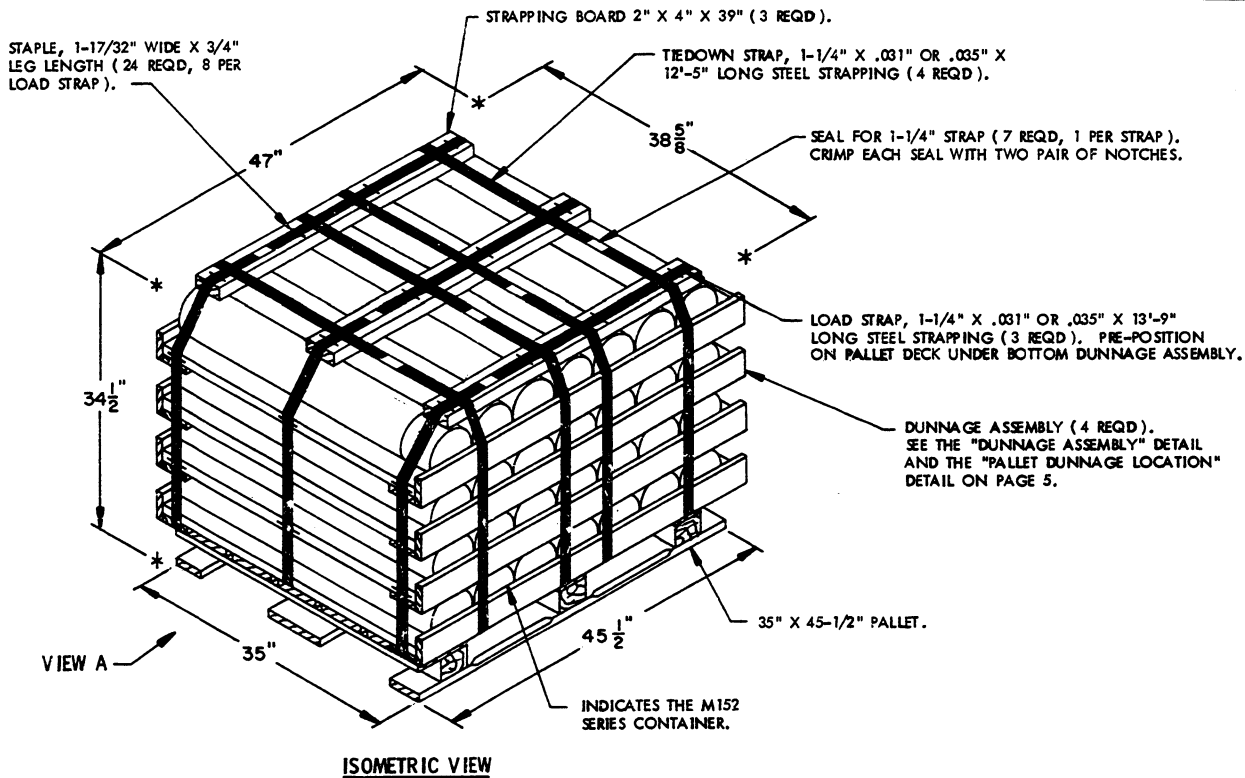


GENERAL NOTES

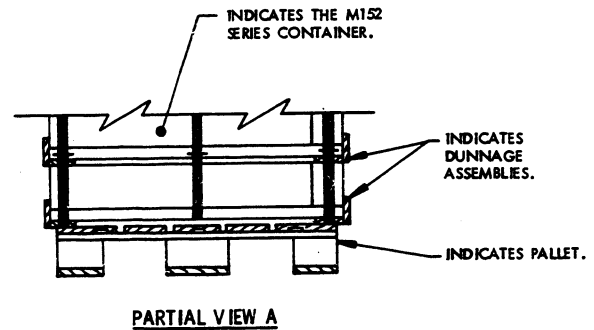
- A. THIS APPENDIX CANNOT STAND ALONE BUT MUST BE USED IN CONJUNCTION WITH THE BASIC UNITIZING PROCEDURES DRAWING 19-48-4079-20PM1002. TO PRODUCE AN APPROVED UNIT LOAD, ALL PERTINENT PROCEDURES, SPECIFICATIONS AND CRITERIA SET FORTH WITHIN THE BASIC DRAWING WILL APPLY TO THE PROCEDURES DELINEATED IN THIS APPENDIX. ANY EXCEPTIONS TO THE BASIC PROCEDURES ARE SPECIFIED IN THIS APPENDIX.
- B. DIMENSIONS, CUBE, AND WEIGHT OF A PALLET UNIT WILL VARY SLIGHTLY DEPENDING UPON THE ACTUAL DIMENSIONS OF THE CONTAINER, WEIGHT OF THE SPECIFIED ITEM AND METHOD OF UNITIZATION.
- C. FOR OUTLOADING AND STORAGE OF THE ITEMS COVERED BY THIS APPENDIX, SEE DARCOM DRAWING 19-48-4079-1-2-5-11-14PM1001.
- D. FOR THE METHOD OF SECURING A STRAP CUTTER TO THE PALLET UNIT, SEE DARCOM DRAWING 19-48-4127-20P1000.
- E. IF ITEMS COVERED HEREIN ARE UNITIZED PRIOR TO ISSUANCE OF THIS APPENDIX, THE CONTAINERS NEED NOT BE REUNITIZED SOLELY TO CONFORM TO THIS APPENDIX.
- F. FOR DETAILS OF THE M152 SERIES CONTAINER, SEE DRAWING NO. 76-1-674.
- CONTAINER DIMENSIONS ----- 37-1/32" LONG BY 6-1/8" DIAMETER.
CONTAINER CUBE ----- 0.6 CUBIC FEET (APPROX)
CONTAINER WEIGHT
(WITH ROUND) ----- 71 POUNDS (APPROX)
- G. THE UNITIZATION PROCEDURES DEPICTED HEREIN MAY ALSO BE USED FOR UNITIZING COMPLETE ROUNDS WHEN IDENTIFIED BY DIFFERENT NATIONAL STOCK NUMBERS (NSN) THAN THOSE SHOWN ON THE COVER PAGE, PROVIDED THE ITEM IS PACKED IN THE M152 SERIES CONTAINER. THE EXPLOSIVE CLASSIFICATION OF OTHER ITEMS MAY BE DIFFERENT THAN THOSE SHOWN.

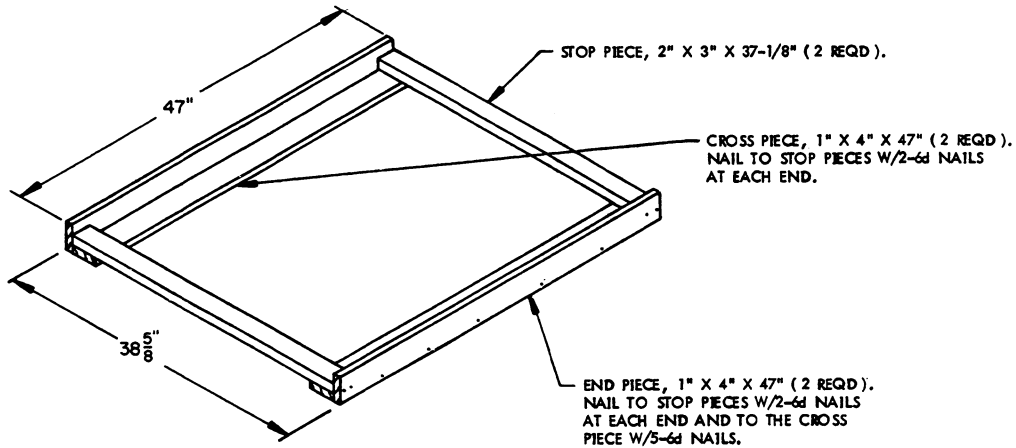
THIS PAGE HAS BEEN INTENTIONALLY LEFT BLANK.



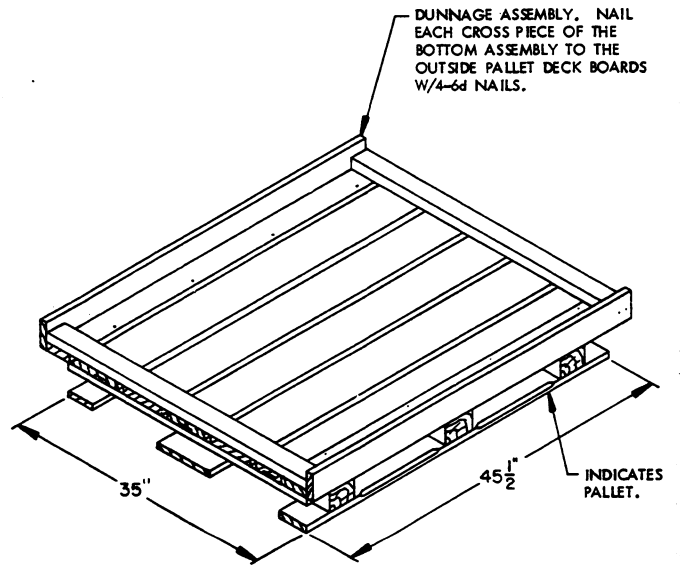
SPECIAL NOTES:

1. THE UNIT SHOWN ABOVE DEPICTS A 28-CONTAINER PALLET UNIT OF COMPLETE ROUNDS OF AMMUNITION PACKED IN M152 SERIES CYLINDRICAL METAL CONTAINERS. FOR UNITS OF LESS THAN 28 CONTAINERS, SEE THE "FILLERS AND INSTALLATION PROCEDURES FOR OMITTED CONTAINERS" DETAIL ON PAGES 6 AND 7.
2. IF THE 2" X 3" DUNNAGE LUMBER SPECIFIED IS NOT READILY AVAILABLE, TWO ACCEPTABLE SIZE DUNNAGE PIECES CAN BE MADE BY RIPPING (SAWING) A PIECE OF NOMINAL SIZE 2" X 6" LUMBER ON THE CENTER LINE OF ITS WIDTH.
3. DIMENSIONS GIVEN FOR DUNNAGE PIECES OR DUNNAGE ASSEMBLIES WILL BE FIELD CHECKED PRIOR TO THEIR ASSEMBLY TO THE PALLET UNIT. CONTAINERS MUST FIT SNUGLY IN THE DUNNAGE ASSEMBLIES. ALSO, DUE TO THE VARIATION OF CONTAINER DIMENSIONS, ADJUSTMENTS MAY BE REQUIRED AS TO THE LOCATION OF CERTAIN PIECES OF DUNNAGE IN A DUNNAGE ASSEMBLY.





DUNNAGE ASSEMBLY
(4 REQD)
(SEE SPECIAL NOTES 2 AND 3 ON PAGE 4.)



PALLET DUNNAGE LOCATION

BILL OF MATERIAL		
LUMBER	LINEAR FEET	BOARD FEET
1" X 4"	62.67	20.89
2" X 3"	24.75	12.38
2" X 4"	9.75	6.50
NAILS	NO. REQD	POUNDS
6d (2")	112	0.66
PALLET, 35" X 45-1/2"	1 REQD	65 LBS
STEEL STRAPPING, 1-1/4" X .035" OR .031"	90.92" REQD	12.99 LBS
SEAL FOR 1-1/4" STRAPPING	7 REQD	NIL
STAPLE, 1-17/32" X 3/4"	24 REQD	NIL

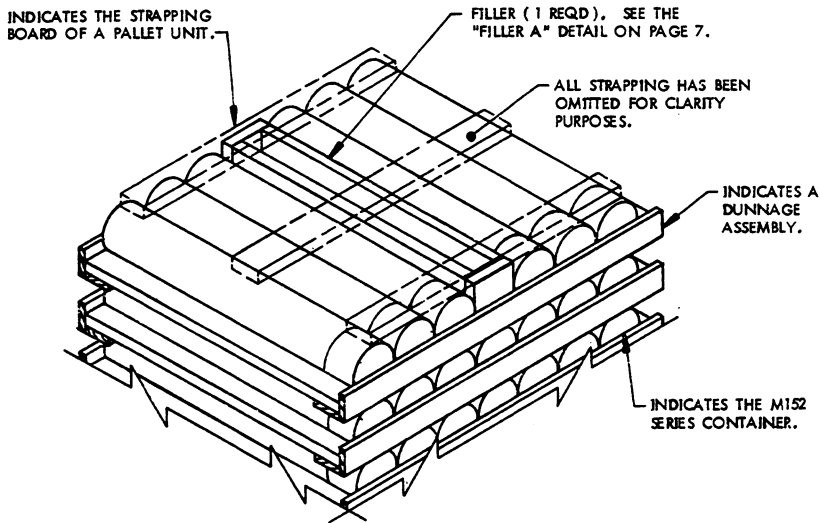
UNIT DATA

WEIGHT

CUBE ----- 36.2 CUBIC FEET (APPROX)
 CONTAINER, M152 SERIES --- 28 EACH @ 71 LBS ----- 1,988 LBS (APPROX)
 DUNNAGE ----- 94 LBS
 PALLET ----- 65 LBS
 TOTAL WEIGHT ----- 2,147 LBS (APPROX)

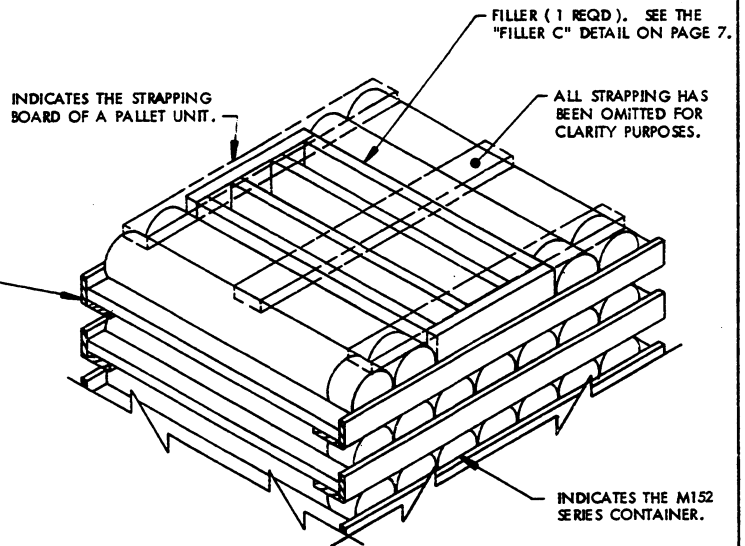
SPECIAL NOTE:

1. WHEN SEVEN CONTAINERS ARE TO BE OMITTED FROM A PALLET UNIT, A COMPLETE LAYER OF CONTAINERS MUST BE OMITTED. WHEN SIX CONTAINERS ARE TO BE OMITTED FROM A PALLET UNIT, A COMBINATION OF FILLER ASSEMBLIES DEPICTED ON PAGE 7 MUST BE USED. WHEN FIVE OR LESS CONTAINERS ARE TO BE OMITTED FROM A PALLET UNIT, A COMBINATION OR ONE OF THE FILLER ASSEMBLIES DEPICTED ON PAGE 7 MAY BE USED. ALL FILLER ASSEMBLIES MUST BE INSTALLED IN THE MIDDLE OF THE TOP LAYER OR LAYERS OF A PALLET UNIT.



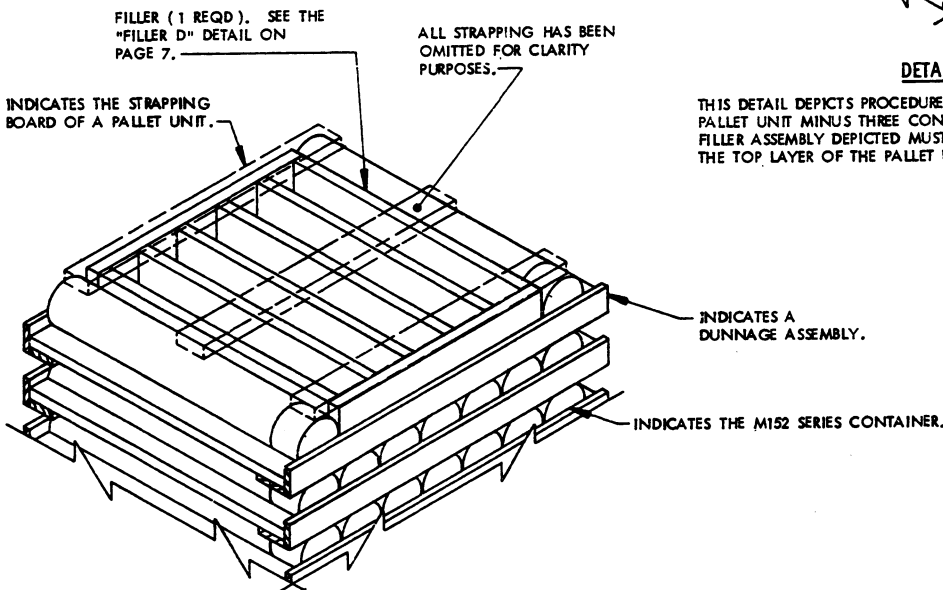
DETAIL A

THIS DETAIL DEPICTS PROCEDURES TO BE USED WHEN A STANDARD PALLET UNIT MINUS ONE CONTAINER IS TO BE UNITIZED. THE FILLER ASSEMBLY DEPICTED MUST BE INSTALLED IN THE MIDDLE OF THE TOP LAYER OF THE PALLET UNIT.



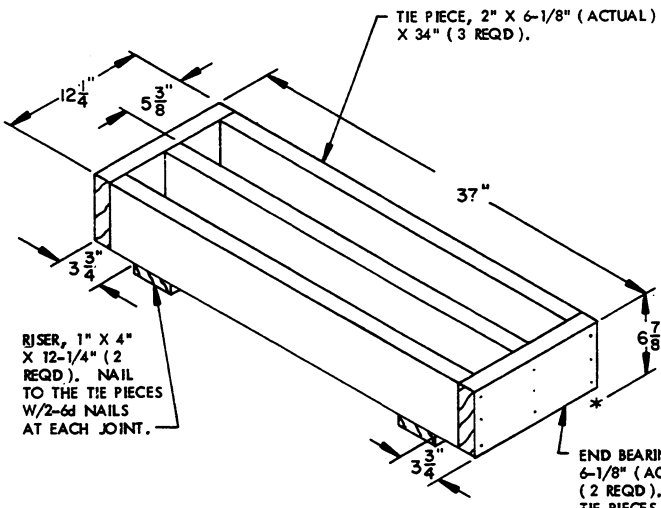
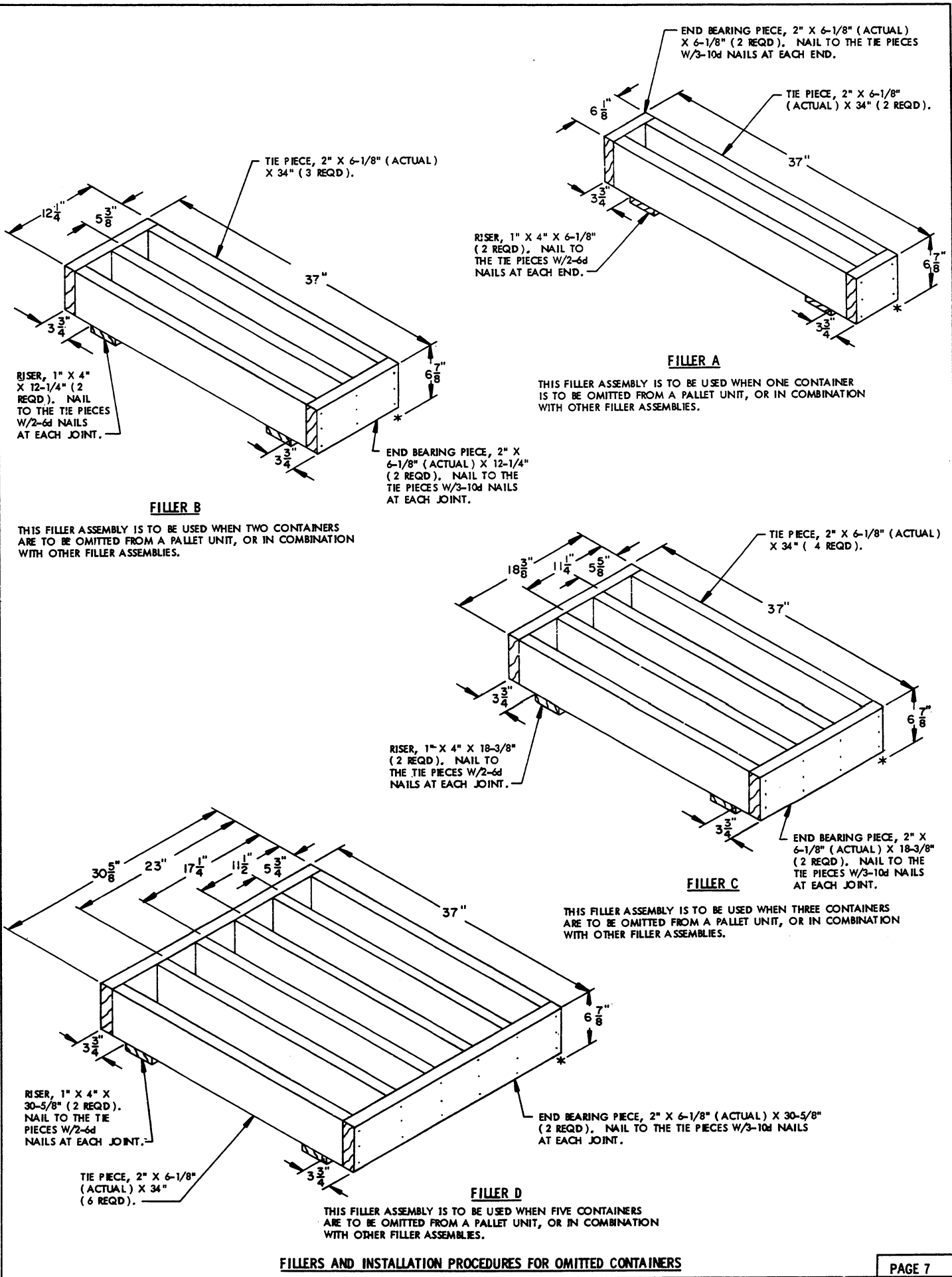
DETAIL B

THIS DETAIL DEPICTS PROCEDURES TO BE USED WHEN A STANDARD PALLET UNIT MINUS THREE CONTAINERS IS TO BE UNITIZED. THE FILLER ASSEMBLY DEPICTED MUST BE INSTALLED IN THE MIDDLE OF THE TOP LAYER OF THE PALLET UNIT.



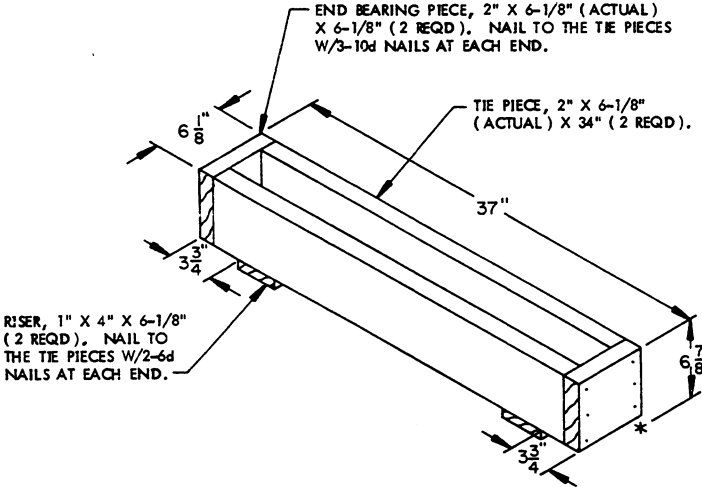
DETAIL C

THIS DETAIL DEPICTS PROCEDURES TO BE USED WHEN A STANDARD PALLET UNIT MINUS FIVE CONTAINERS IS TO BE UNITIZED. THE ASSEMBLY DEPICTED MUST BE INSTALLED IN THE MIDDLE OF THE TOP LAYER OF THE PALLET UNIT.



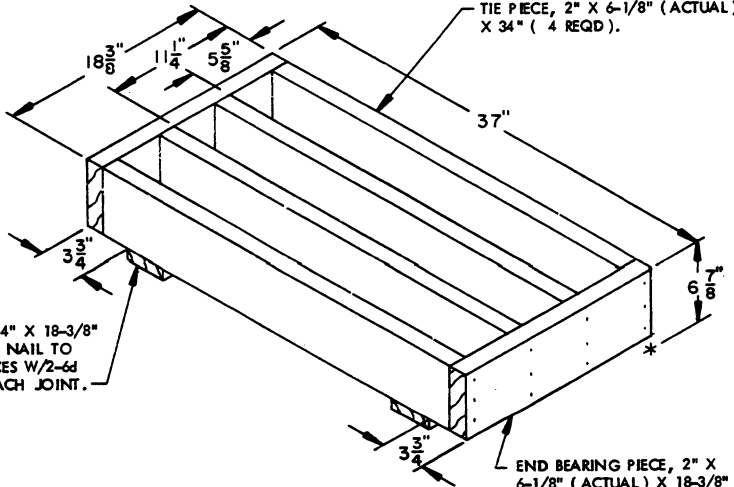
FILLER B

THIS FILLER ASSEMBLY IS TO BE USED WHEN TWO CONTAINERS ARE TO BE OMITTED FROM A PALLET UNIT, OR IN COMBINATION WITH OTHER FILLER ASSEMBLIES.



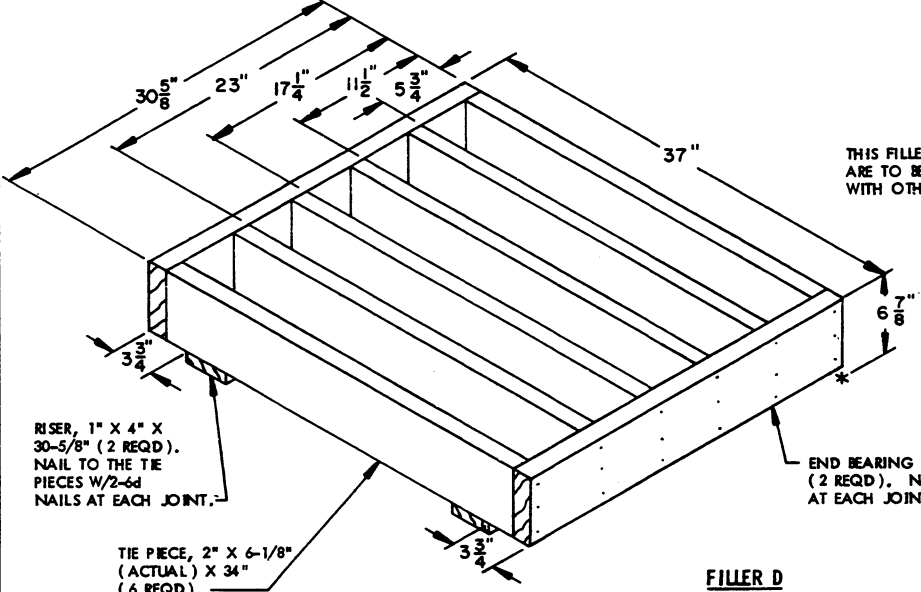
FILLER A

THIS FILLER ASSEMBLY IS TO BE USED WHEN ONE CONTAINER IS TO BE OMITTED FROM A PALLET UNIT, OR IN COMBINATION WITH OTHER FILLER ASSEMBLIES.



FILLER C

THIS FILLER ASSEMBLY IS TO BE USED WHEN THREE CONTAINERS ARE TO BE OMITTED FROM A PALLET UNIT, OR IN COMBINATION WITH OTHER FILLER ASSEMBLIES.



FILLER D

THIS FILLER ASSEMBLY IS TO BE USED WHEN FIVE CONTAINERS ARE TO BE OMITTED FROM A PALLET UNIT, OR IN COMBINATION WITH OTHER FILLER ASSEMBLIES.

FILLERS AND INSTALLATION PROCEDURES FOR OMITTED CONTAINERS

