

APPENDIX 3

UNITIZING PROCEDURES FOR COMPLETE ROUNDS PACKED IN CYLINDRICAL METAL CONTAINERS ON 4-WAY ENTRY PALLETS

MI59 SERIES CONTAINER

INDEX

<u>ITEM</u>	<u>PAGE(S)</u>
GENERAL NOTES -----	2
UNIT DETAIL -----	4, 5
FILLERS AND INSTALLATION PROCEDURES FOR OMITTED CONTAINERS -----	6, 7

PALLET UNIT DATA						
ITEMS INCLUDED		HAZARD CLASSIFICATION				WEIGHT (LBS)
NSN	DODIC	DOT CLASS	CG CLASS	QD CLASS	COMP GROUP	
1315-						
00-023-4465	C265	A	IV	(12) 1.2	E	2,176
00-023-4469	C265	A	IV	(12) 1.2	E	2,176
00-305-0858	C265	A	IV	(12) 1.2	E	2,176
00-023-4414	C266	A	IV	(12) 1.2	E	2,176
00-023-4416	C266	A	IV	(12) 1.2	E	2,176
00-023-4453	C266	A	IV	(12) 1.2	E	2,176
00-023-4454	C266	A	IV	(12) 1.2	E	2,176
00-023-4456	C266	A	IV	(12) 1.2	E	2,176
00-023-4461	C266	A	IV	(12) 1.2	E	2,176
00-023-4474	C266	A	IV	(12) 1.2	E	2,176
00-023-4450	C267	A	IV	(12) 1.2	E	2,176
00-023-4459	C267	A	IV	(12) 1.2	E	2,176
00-023-4460	C267	A	IV	(12) 1.2	E	2,176
00-301-1756	C267	A	IV	(12) 1.2	E	2,176

NOTICE: THIS APPENDIX CANNOT STAND ALONE BUT MUST BE USED IN CONJUNCTION WITH THE BASIC UNITIZATION PROCEDURES DRAWING 19-48-4079-20PM1002.

THIS DRAWING SUPERSEDES PART OF DRAWING 19-48-4079-1-2-5-11-14PM1001, DATED SEPTEMBER 1969.

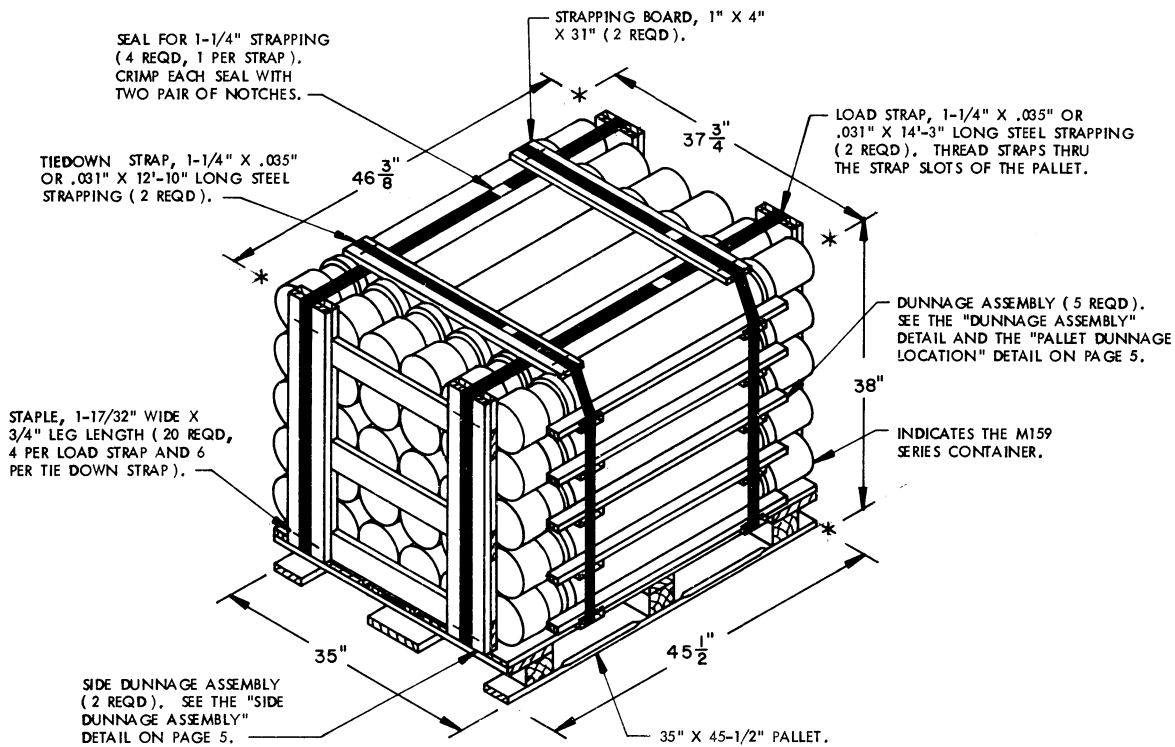
DO NOT SCALE

REVISIONS			
			<small>DRAWN BY</small> DAK <small>PROJ ENG</small> WRF/MWS <small>CHECKED</small> DSK <small>LOG ENGRG OFFICE</small> <small>APPROVED, U. S. ARMY ARMAMENT MATERIEL READINESS COMMAND</small> <i>Math... Darrel C. Fetter</i> <small>DMSAR-MAD</small> <small>DMSAR-TMO</small> <small>APPROVED BY ORDER OF COMMANDING GENERAL, U. S. ARMY MATERIEL DEVELOPMENT AND READINESS COMMAND (DARCOM)</small> <i>John L. Reynolds</i> <small>U. S. ARMY DEFENSE AMMUNITION CENTER AND SCHOOL</small> U. S. ARMY DARCOM DRAWING FEBRUARY 1981 <small>CLASS</small> <small>DIVISION</small> <small>DRAWING</small> <small>FILE</small> 19 48 4079/3 20PM1002

GENERAL NOTES

- A. THIS APPENDIX CANNOT STAND ALONE BUT MUST BE USED IN CONJUNCTION WITH THE BASIC UNITIZING PROCEDURES DRAWING 19-48-4079-20PM1002. TO PRODUCE AN APPROVED UNIT LOAD, ALL PERTINENT PROCEDURES, SPECIFICATIONS AND CRITERIA SET FORTH WITHIN THE BASIC DRAWING WILL APPLY TO THE PROCEDURES DELINEATED IN THIS APPENDIX. ANY EXCEPTIONS TO THE BASIC PROCEDURES ARE SPECIFIED IN THIS APPENDIX.
- B. DIMENSIONS, CUBE AND WEIGHT OF A PALLET UNIT WILL VARY SLIGHTLY DEPENDING UPON THE ACTUAL DIMENSIONS OF THE CONTAINER, WEIGHT OF THE SPECIFIED ITEM AND METHOD OF UNITIZATION.
- C. FOR OUTLOADING AND STORAGE OF THE ITEMS COVERED BY THIS APPENDIX, SEE DARCOM DRAWING 19-48-4079-1-2-5-11-14PM1001.
- D. FOR THE METHOD OF SECURING A STRAP CUTTER TO THE PALLET UNIT, SEE DARCOM DRAWING 19-48-4127-20P1000.
- E. IF ITEMS COVERED HEREIN ARE UNITIZED PRIOR TO ISSUANCE OF THIS APPENDIX, THE CONTAINERS NEED NOT BE REUNITIZED SOLELY TO CONFORM TO THIS APPENDIX.
- F. FOR DETAILS OF THE M159 SERIES CONTAINER, SEE DRAWING NO. 76-1-672.
- CONTAINER DIMENSIONS ----- 43-3/8" LONG BY 6-1/8" DIAMETER.
CONTAINER CUBE ----- 0.7 CUBIC FEET (APPROX)
CONTAINER WEIGHT
(WITH ROUND) ----- 68 POUNDS (APPROX)
- G. THE UNITIZATION PROCEDURES DEPICTED HEREIN MAY ALSO BE USED FOR UNITIZING COMPLETE ROUNDS WHEN IDENTIFIED BY DIFFERENT NATIONAL STOCK NUMBERS (NSN) THAN THOSE SHOWN ON THE COVER PAGE, PROVIDED THE ITEM IS PACKED IN THE M159 SERIES CONTAINER. THE EXPLOSIVE CLASSIFICATION OF OTHER ITEMS MAY BE DIFFERENT THAN THOSE SHOWN.

THIS PAGE HAS BEEN INTENTIONALLY LEFT BLANK.

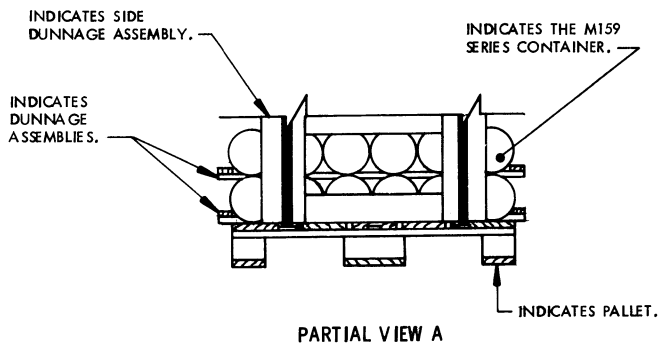


VIEW A

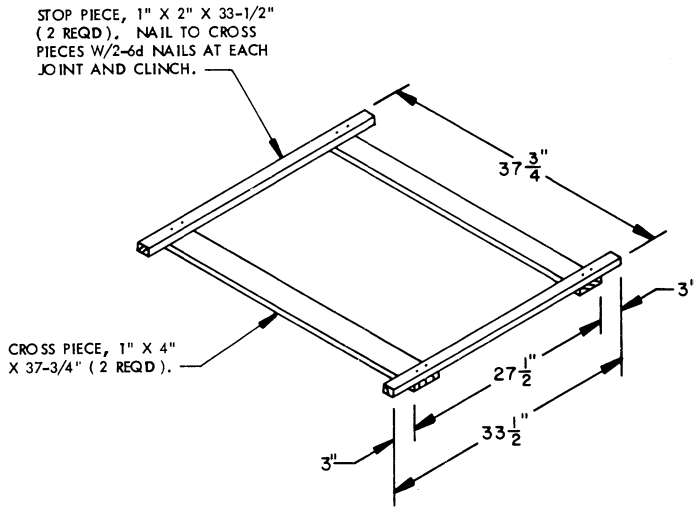
ISOMETRIC VIEW

SPECIAL NOTES:

1. THE UNIT SHOWN ABOVE DEPICTS A 30-CONTAINER PALLET UNIT OF COMPLETE ROUNDS OF AMMUNITION PACKED IN M159 SERIES CYLINDRICAL METAL CONTAINERS. FOR UNITS OF LESS THAN 30 CONTAINERS, SEE THE "FILLERS AND INSTALLATION PROCEDURES FOR OMITTED CONTAINERS" DETAIL ON PAGES 6 AND 7.
2. IF THE 1" X 2" DUNNAGE LUMBER SPECIFIED IS NOT READILY AVAILABLE, TWO ACCEPTABLE SIZE DUNNAGE PIECES CAN BE MADE BY RIPPING (SAWING) A PIECE OF NOMINAL SIZE 1" X 4" LUMBER ON THE CENTER LINE OF ITS WIDTH.
3. DIMENSIONS GIVEN FOR DUNNAGE PIECES OR DUNNAGE ASSEMBLIES WILL BE FIELD CHECKED PRIOR TO THEIR ASSEMBLY TO THE PALLET UNIT. CONTAINERS MUST FIT SNUGLY IN THE DUNNAGE ASSEMBLIES. ALSO, DUE TO THE VARIATION OF CONTAINER DIMENSIONS, ADJUSTMENTS MAY BE REQUIRED AS TO THE LOCATION OF CERTAIN PIECES OF DUNNAGE IN A DUNNAGE ASSEMBLY.

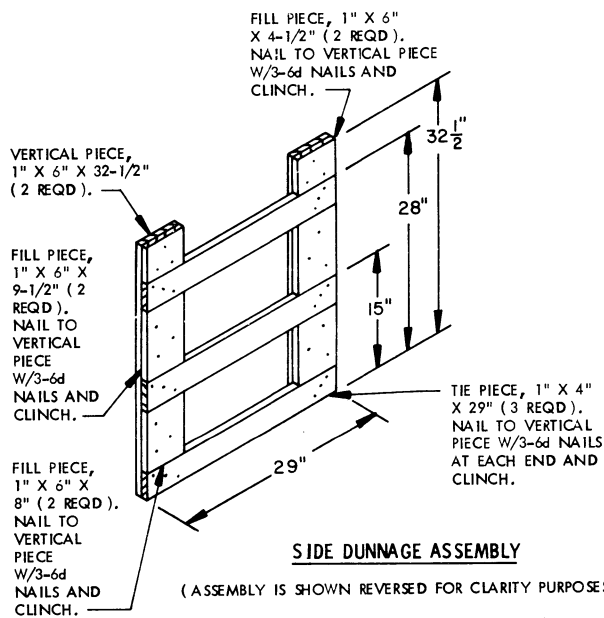


UNIT DETAIL



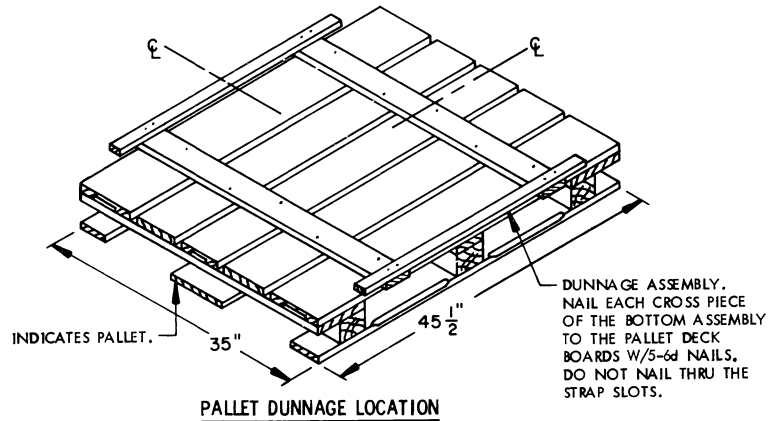
DUNNAGE ASSEMBLY

(5 REQD)
 (SEE SPECIAL NOTES 2 AND 3 ON PAGE 4.)



SIDE DUNNAGE ASSEMBLY

(ASSEMBLY IS SHOWN REVERSED FOR CLARITY PURPOSES.)
 (SEE SPECIAL NOTE 3 ON PAGE 4.)



BILL OF MATERIAL		
LUMBER	LINEAR FEET	BOARD FEET
1" X 2"	27.92	4.65
1" X 4"	51.13	17.04
1" X 6"	18.17	9.09
NAILS	NO. REQD	POUNDS
6d (2")	122	0.72
PALLET, 35" X 45-1/2" -----		1 REQD ----- 65 LBS
STEEL STRAPPING, 1-1/4" X .035" OR .031" - 54.17' REQD -----		7.74 LBS
SEAL FOR 1-1/4" STRAPPING -----		4 REQD ----- NIL
STAPLE, 1-17/32" X 3/4" -----		20 REQD ----- NIL

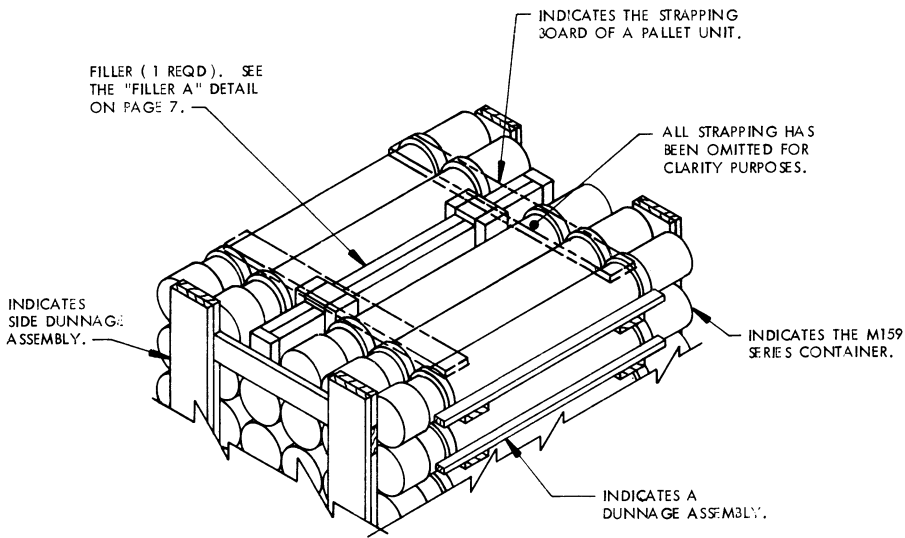
UNIT DATA

WEIGHT

CUBE -----	38.5 CUBIC FEET (APPROX)	
CONTAINER, M159 SERIES -----	30 EA @ 68 LBS -----	2,040 LBS (APPROX)
DUNNAGE -----		71 LBS
PALLET -----		65 LBS
TOTAL WEIGHT -----		2,176 LBS (APPROX)

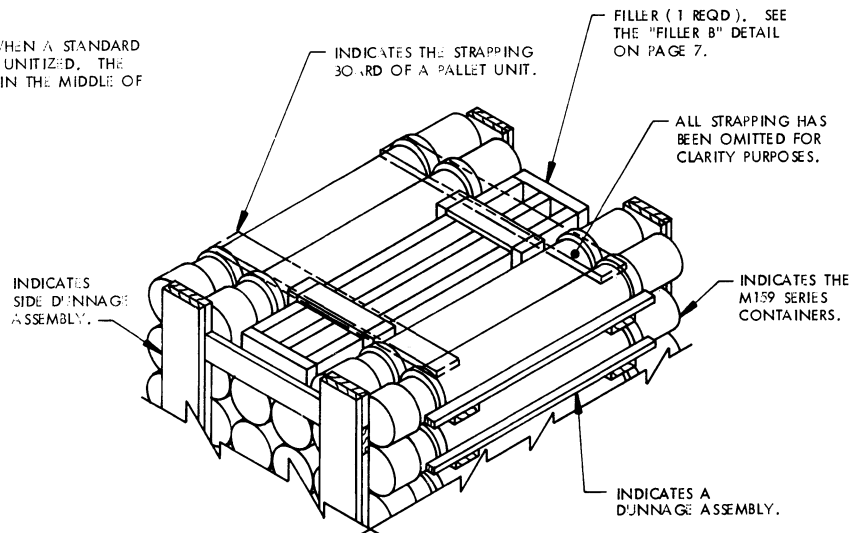
SPECIAL NOTE:

1. WHEN SIX CONTAINERS ARE TO BE OMITTED FROM A PALLET UNIT, A COMPLETE LAYER OF CONTAINERS MUST BE OMITTED. WHEN FIVE CONTAINERS ARE TO BE OMITTED FROM A PALLET UNIT, A COMBINATION OF FILLER ASSEMBLIES DEPICTED ON PAGE 7 MUST BE USED. WHEN FOUR OR LESS CONTAINERS ARE TO BE OMITTED FROM A PALLET UNIT, A COMBINATION OR ONE OF THE FILLER ASSEMBLIES DEPICTED ON PAGE 7 MAY BE USED. ALL FILLER ASSEMBLIES MUST BE INSTALLED IN THE MIDDLE OF THE TOP LAYER OR LAYERS OF A PALLET UNIT.



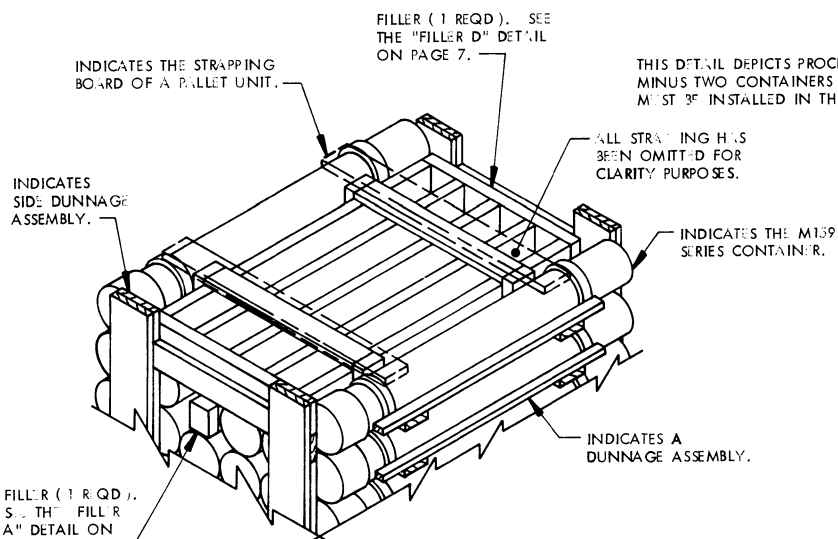
DETAIL A

THIS DETAIL DEPICTS PROCEDURES TO BE USED WHEN A STANDARD PALLET UNIT MINUS ONE CONTAINER IS TO BE UNITIZED. THE FILLER ASSEMBLY DEPICTED MUST BE INSTALLED IN THE MIDDLE OF THE TOP LAYER OF THE PALLET UNIT.



DETAIL B

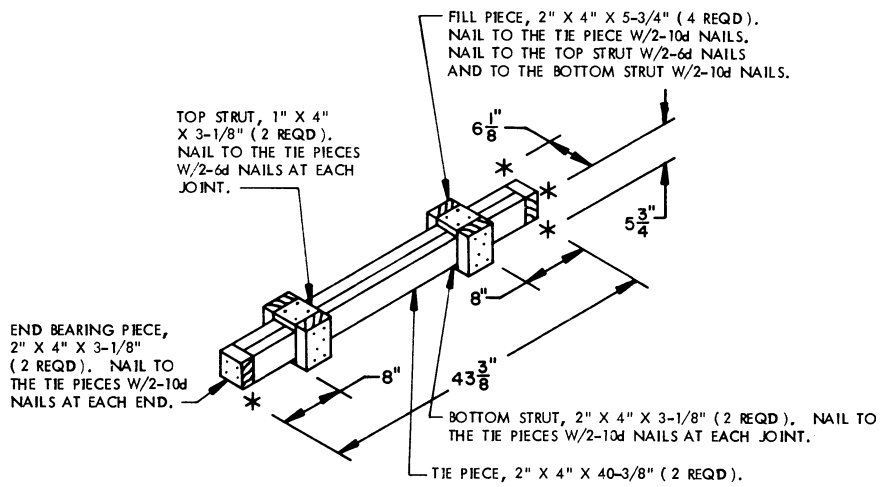
THIS DETAIL DEPICTS PROCEDURES TO BE USED WHEN A STANDARD PALLET UNIT MINUS TWO CONTAINERS IS TO BE UNITIZED. THE FILLER ASSEMBLY DEPICTED MUST BE INSTALLED IN THE MIDDLE OF THE TOP LAYER OF THE PALLET UNIT.



DETAIL C

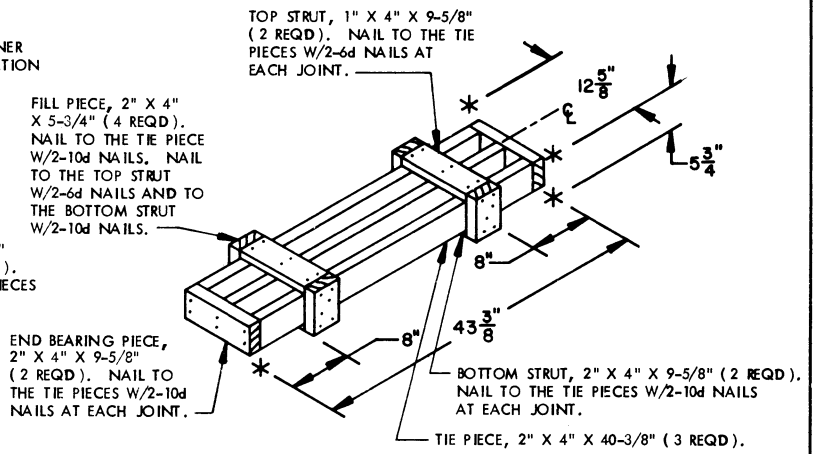
THIS DETAIL DEPICTS PROCEDURES TO BE USED WHEN A STANDARD PALLET UNIT MINUS FIVE CONTAINERS IS TO BE UNITIZED. THE FILLER ASSEMBLIES DEPICTED MUST BE INSTALLED IN THE MIDDLE OF THE TOP LAYER OR LAYERS OF THE PALLET UNIT.

FILLERS AND INSTALLATION PROCEDURES FOR OMITTED CONTAINERS



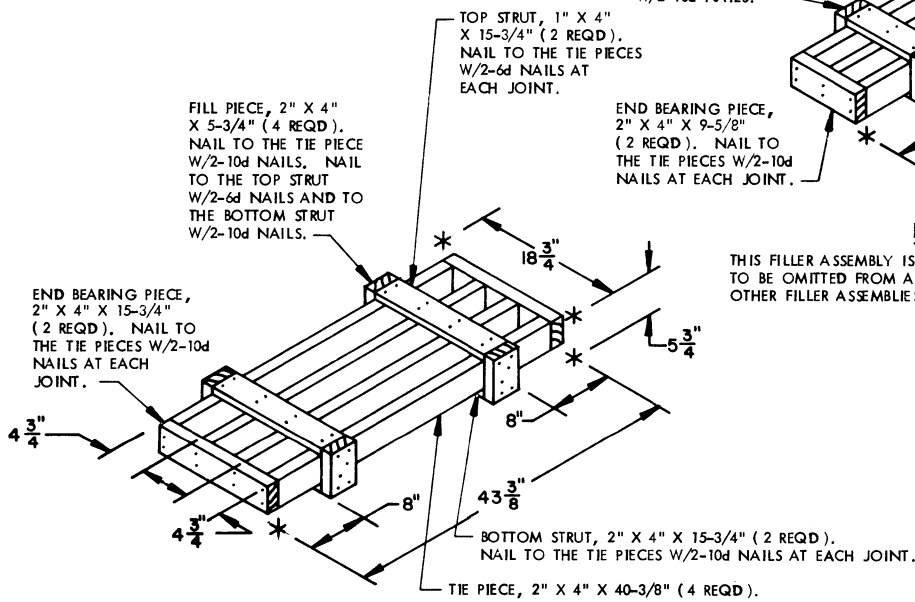
FILLER A

THIS FILLER ASSEMBLY IS TO BE USED WHEN ONE CONTAINER IS TO BE OMITTED FROM A PALLET UNIT, OR IN COMBINATION WITH OTHER FILLER ASSEMBLIES.



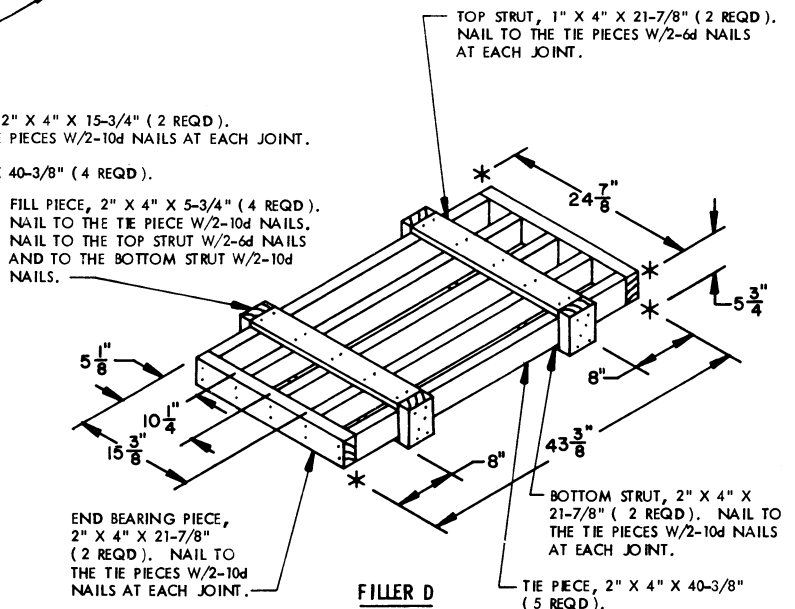
FILLER B

THIS FILLER ASSEMBLY IS TO BE USED WHEN TWO CONTAINERS ARE TO BE OMITTED FROM A PALLET UNIT, OR IN COMBINATION WITH OTHER FILLER ASSEMBLIES.



FILLER C

THIS FILLER ASSEMBLY IS TO BE USED WHEN THREE CONTAINERS ARE TO BE OMITTED FROM A PALLET UNIT, OR IN COMBINATION WITH OTHER FILLER ASSEMBLIES.



FILLER D

THIS FILLER ASSEMBLY IS TO BE USED WHEN FOUR CONTAINERS ARE TO BE OMITTED FROM A PALLET UNIT, OR IN COMBINATION WITH OTHER FILLER ASSEMBLIES.

