

# STORAGE IN 60' & 80' IGLOO AND 80' STRADLEY MAGAZINES OF CBU ITEMS \* PACKED IN THE CNU 98/E CONTAINER

<u>ITEM</u>	<u>INDEX</u>	<u>PAGE(S)</u>
GENERAL NOTES-----		3
IGLOO STORAGE PROCEDURES-----		2,3
STRADLEY STORAGE PROCEDURES-----		4,5

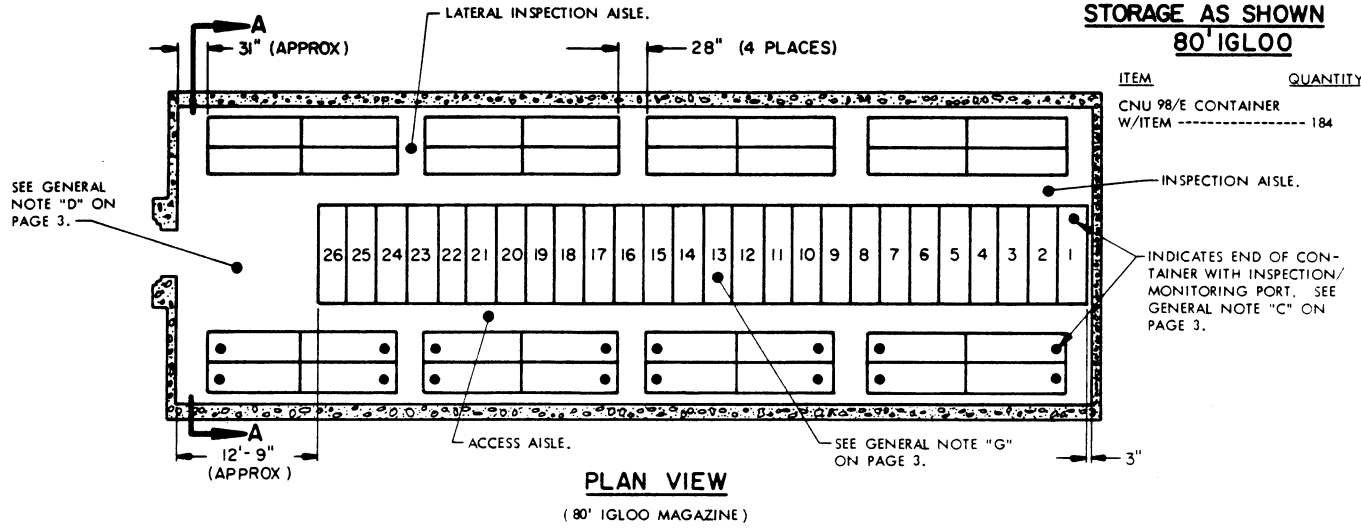
\* ITEMS SUCH AS THE CBU-15/A  
THAT REQUIRE SPECIAL IN-STORAGE  
MONITORING

DRAFTSMAN <i>BBE</i>	PROJ ENG <i>GWP/LW</i>	APSA <i>PJS</i>	SUBMITTED <i>W. B. Hardins Col.</i>	
CHECKER <i>JDS</i>	ARC AMMO CTR <i>JTB</i>		COMMANDING OFFICER, SAVANNA ARMY DEPOT	
REVISIONS			EXAMINED AND APPROVED <i>Ralph Hall</i>	
			AMMUNITION PROCUREMENT & SUPPLY AGENCY	
			APPROVED BY ORDER OF COMMANDING GENERAL U. S. ARMY MATERIEL COMMAND	
			<i>Paul...</i>	
			U. S. ARMY MATERIEL COMMAND	
			APRIL 1969	
			CLASS	DIVISION
			DRAWING	FILE
			19	48
			4077	14J 1000

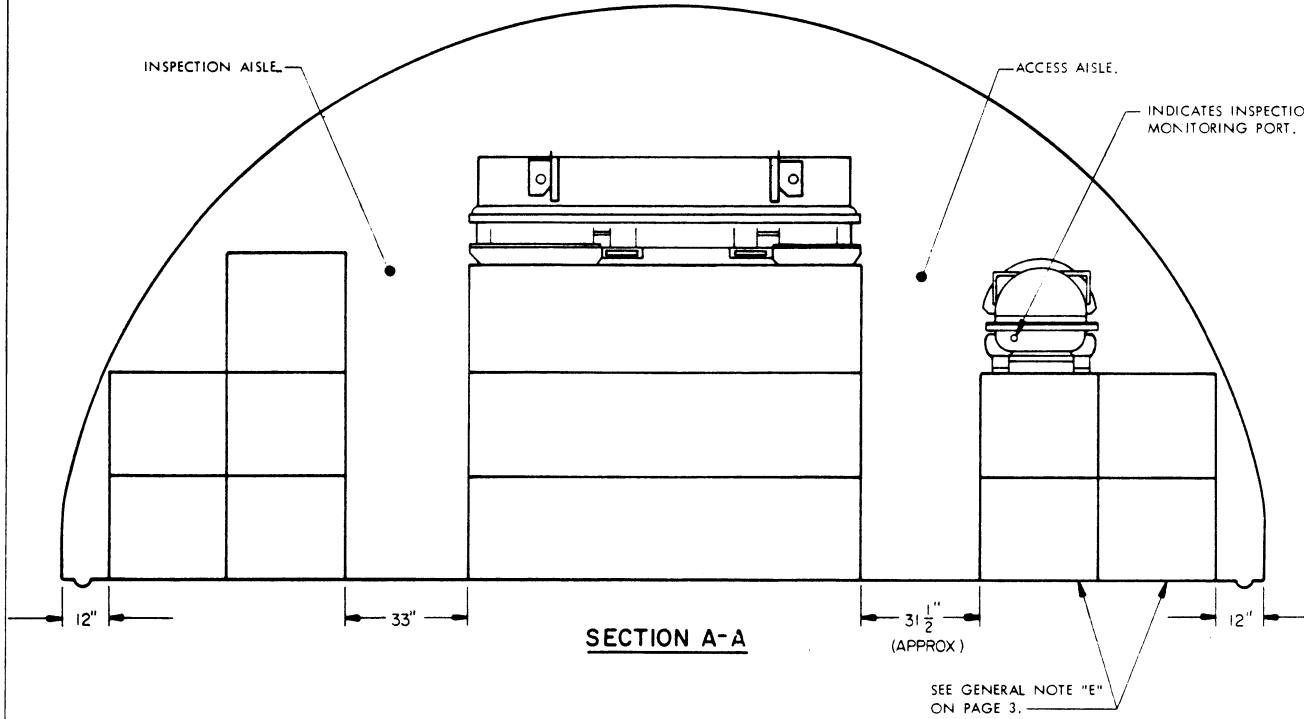
DO NOT SCALE

**STORAGE AS SHOWN  
80' IGLOO**

ITEM	QUANTITY
CNU 98/E CONTAINER W/ITEM -----	184



**PLAN VIEW**  
(80' IGLOO MAGAZINE)

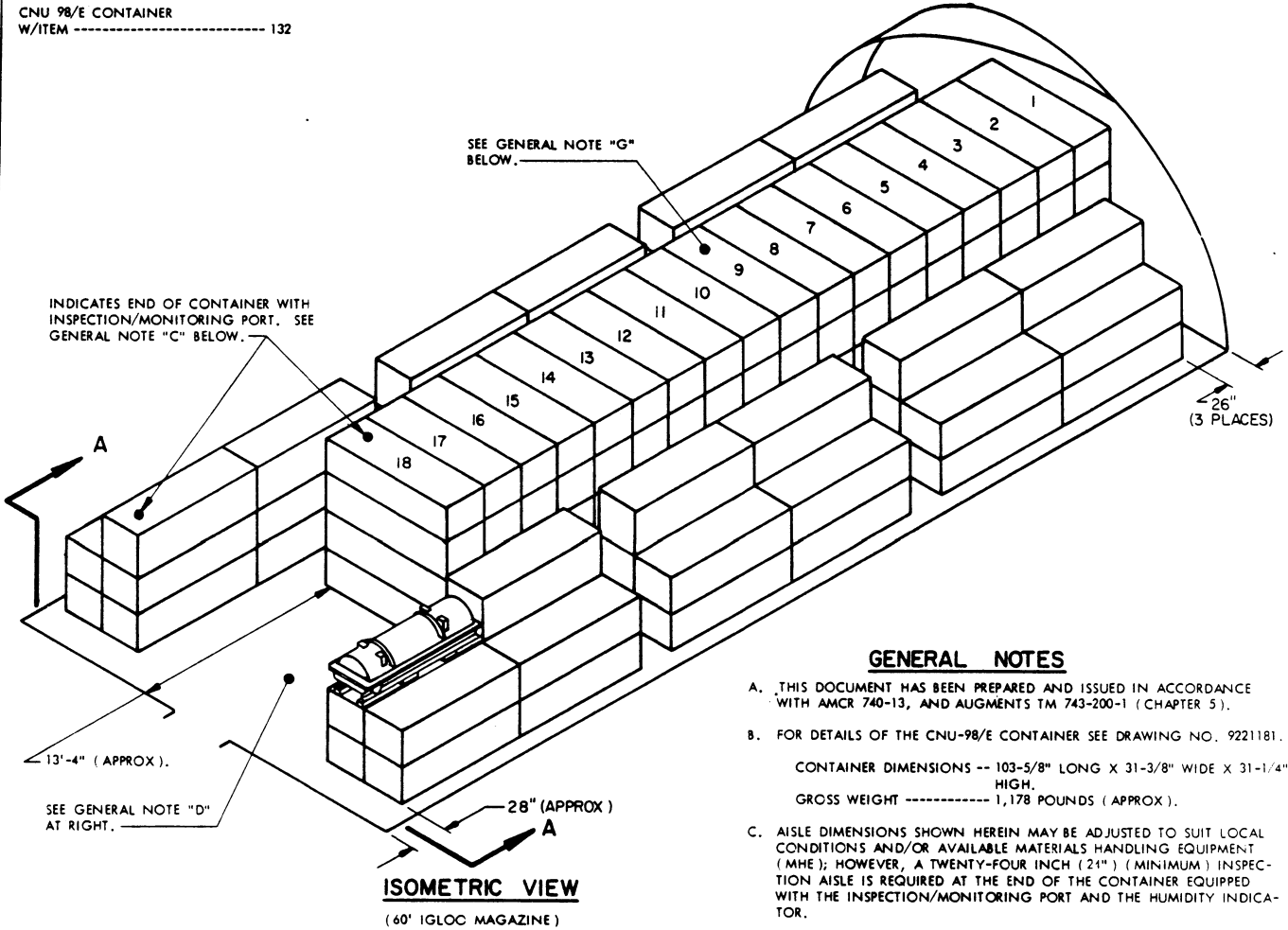


**SECTION A-A**

**STORAGE AS SHOWN**

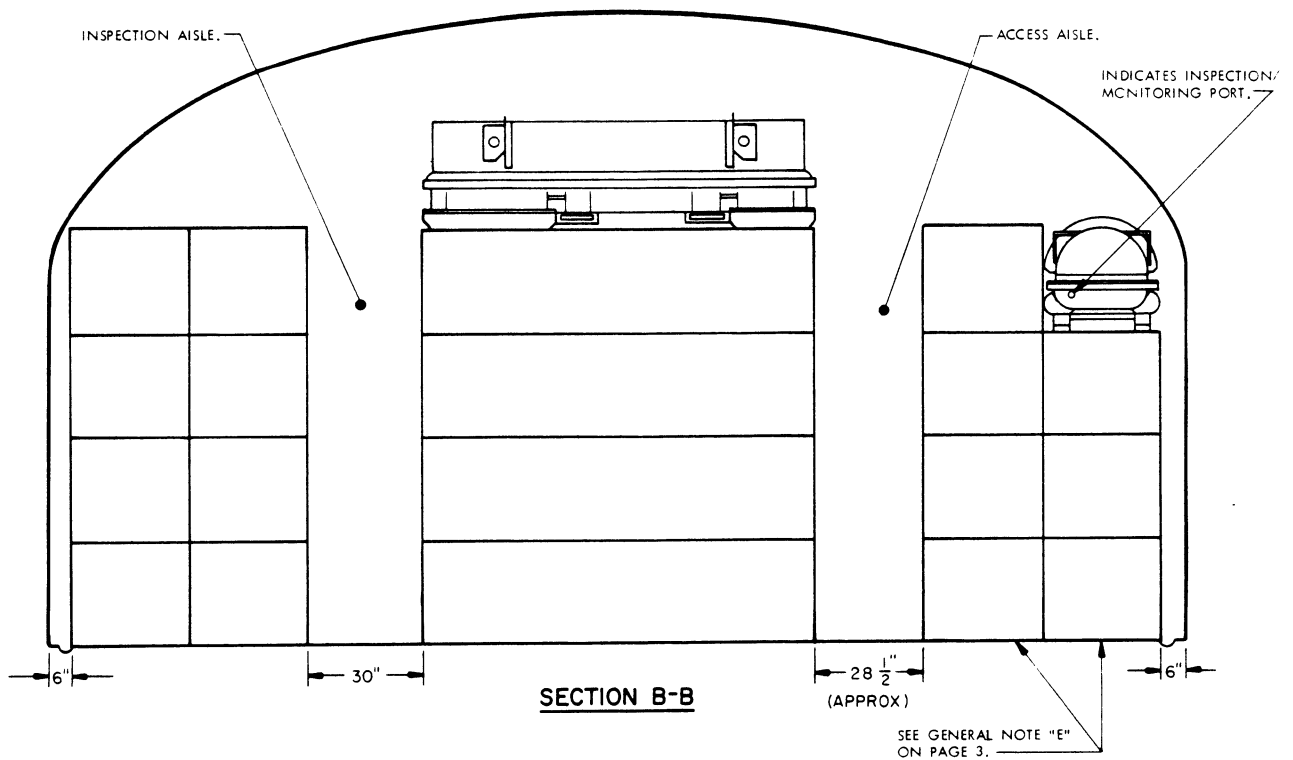
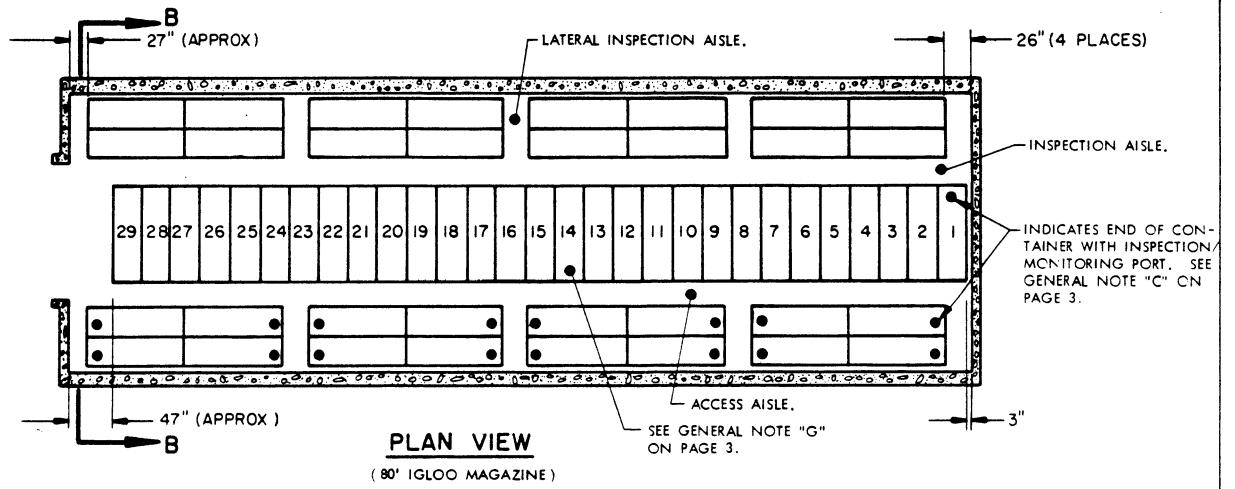
**60' IGLOO**

ITEM	QUANTITY
CNU 98/E CONTAINER	
W/ITEM -----	132



**GENERAL NOTES**

- A. THIS DOCUMENT HAS BEEN PREPARED AND ISSUED IN ACCORDANCE WITH AMCR 740-13, AND AUGMENTS TM 743-200-1 (CHAPTER 5).
- B. FOR DETAILS OF THE CNU-98/E CONTAINER SEE DRAWING NO. 9221181.  
CONTAINER DIMENSIONS -- 103-5/8" LONG X 31-3/8" WIDE X 31-1/4" HIGH.  
GROSS WEIGHT ----- 1,178 POUNDS (APPROX).
- C. AISLE DIMENSIONS SHOWN HEREIN MAY BE ADJUSTED TO SUIT LOCAL CONDITIONS AND/OR AVAILABLE MATERIALS HANDLING EQUIPMENT (MHE); HOWEVER, A TWENTY-FOUR INCH (24") (MINIMUM) INSPECTION AISLE IS REQUIRED AT THE END OF THE CONTAINER EQUIPPED WITH THE INSPECTION/MONITORING PORT AND THE HUMIDITY INDICATOR.
- D. IF THE AVAILABLE MHE PERMITS, ADDITIONAL CNU-98/E CONTAINERS MAY BE STORED WITHIN THE FRONTAL AREA OF THE MAGAZINE.
- E. AS REQUIRED TO CREATE VERTICAL STACKS, WOOD SHIMS (REF. 1/4" THICK BY SKID LENGTH) MAY BE USED UNDER THE TWO LOW SIDE SKIDS OF THE BOTTOM CONTAINER IN EACH OF THE ROWS AT THE SIDE OF A MAGAZINE.
- F. LOTS WILL NOT BE MIXED, BUT ONLY TO THE EXTENT THAT ITEMS OF ONE LOT WILL NOT BE STACKED ON TOP OF ITEMS FROM ANOTHER LOT.
- G. IF DESIRED, AN EIGHTEEN INCH (18") LATERAL AISLE MAY BE LOCATED NEAR THE MIDPOINT WITHIN THE ROW OF CROSSWISE POSITIONED CONTAINER STACKS, TO PROVIDE AN ACCESS AISLE BETWEEN OPPOSITE SIDES OF THE MAGAZINE.
- H. STORED CONTAINERS MUST NOT CONTACT THE WALL OF A MAGAZINE. TO PROVIDE FOR THIS MANDATORY CLEARANCE REQUIREMENT, CONTAINERS MAY BE ELIMINATED FROM THE DEPICTED STACKING PATTERN AS NECESSARY, OR AISLE DIMENSIONS MAY BE ADJUSTED AS PER GENERAL NOTE "C" ABOVE.

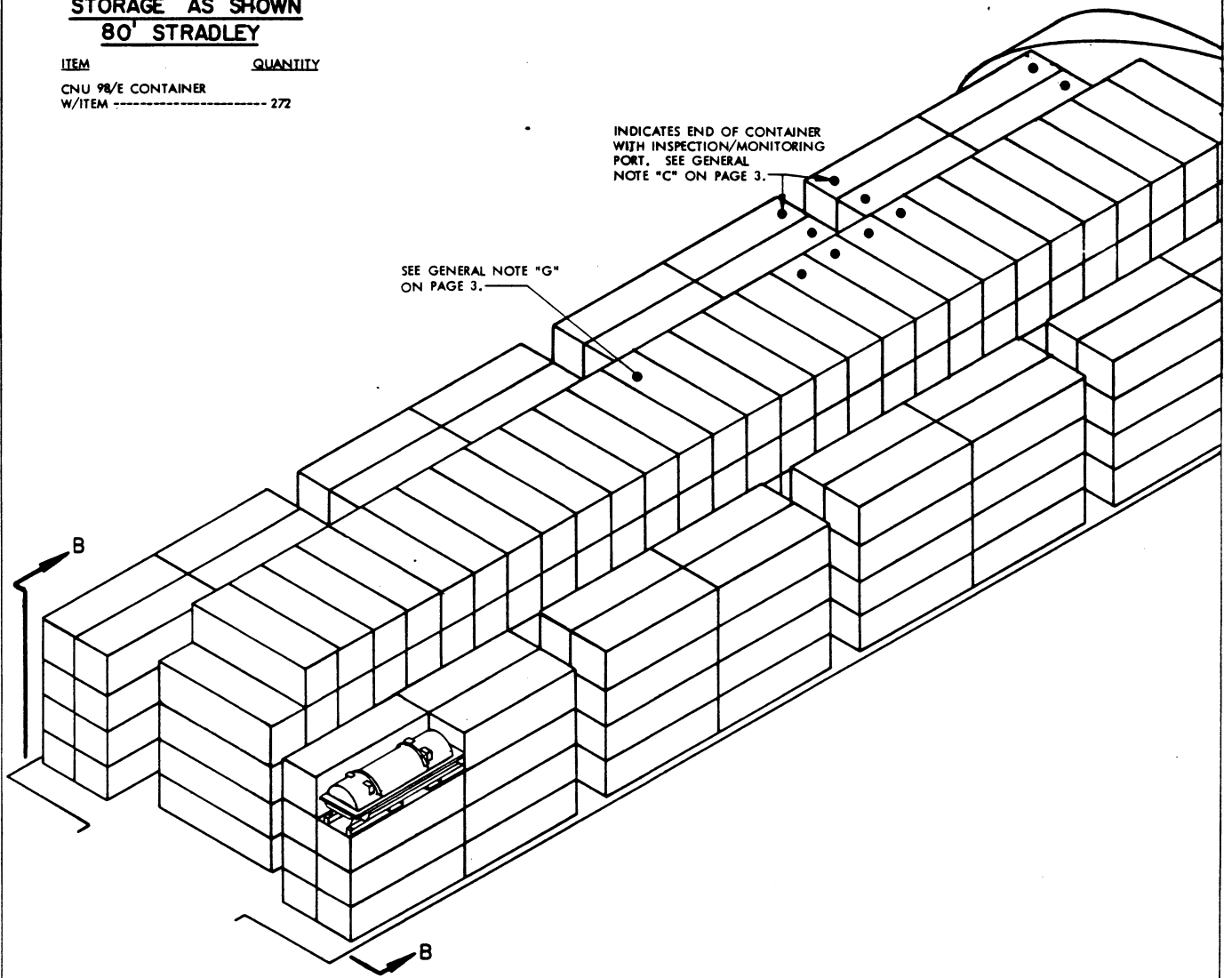


**STORAGE AS SHOWN**  
**80' STRADLEY**

ITEM	QUANTITY
CNU 98/E CONTAINER	
W/ITEM -----	272

INDICATES END OF CONTAINER  
WITH INSPECTION/MONITORING  
PORT. SEE GENERAL  
NOTE "C" ON PAGE 3.

SEE GENERAL NOTE "G"  
ON PAGE 3.



**ISOMETRIC VIEW**  
(80' STRADLEY MAGAZINE)

FOR "GENERAL NOTES", SEE PAGE 3.

