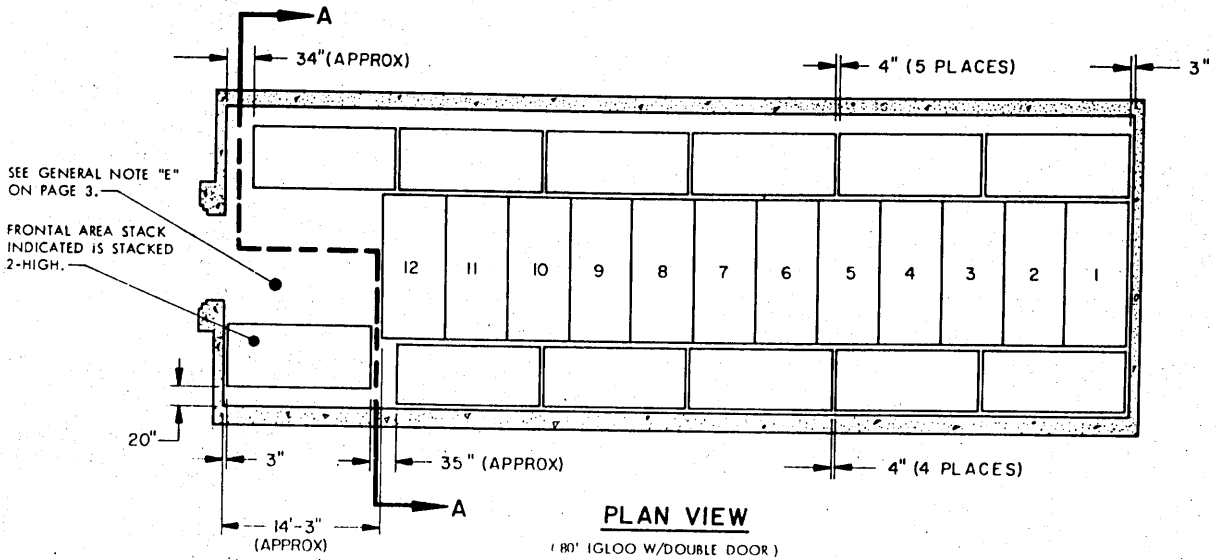


STORAGE AS SHOWN

80' IGLOO

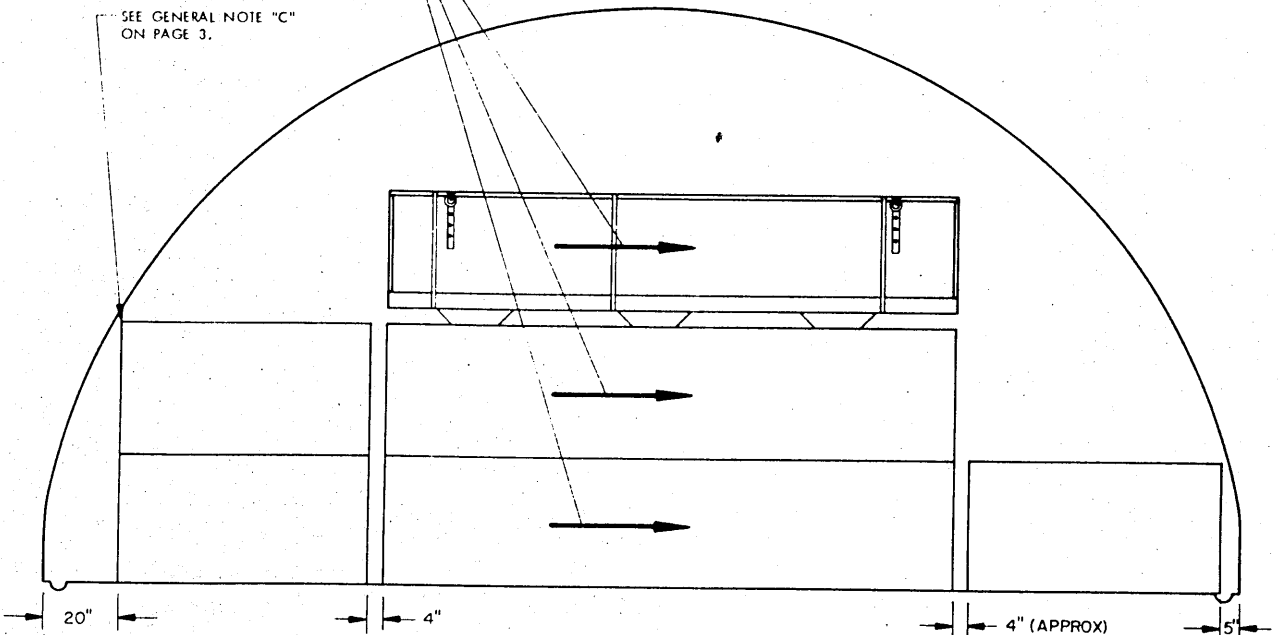
ITEM	QUANTITY
CRATE W/CONTENTS	55



PLAN VIEW

(80' IGLOO W/DOUBLE DOOR)

DIRECTIONAL ARROWS INDICATE FORWARD END OF DEMOLITION KITS.

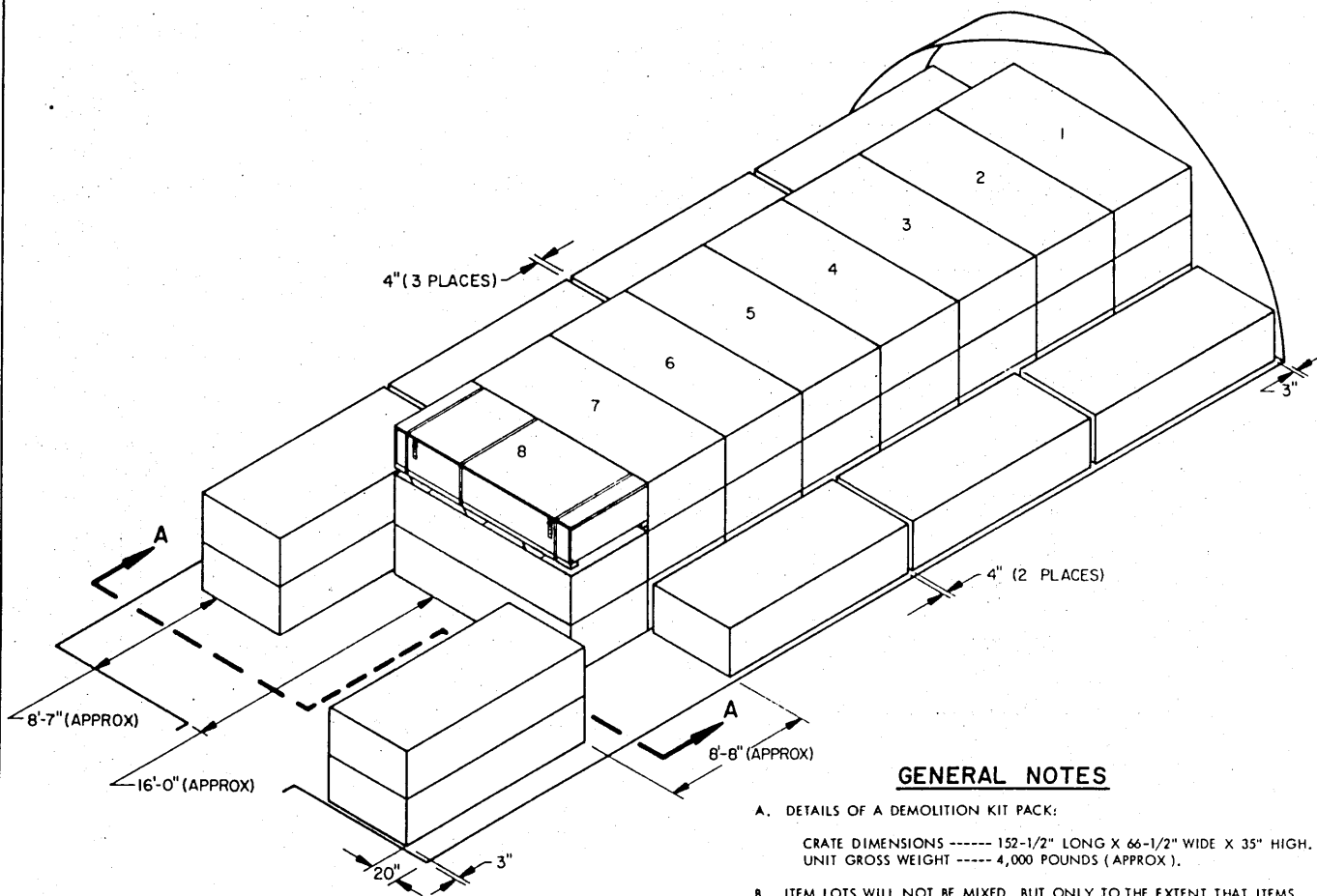


SECTION A-A

STORAGE AS SHOWN

60' IGLOO

ITEM	QUANTITY
CRATE W/CONTENTS -----	37

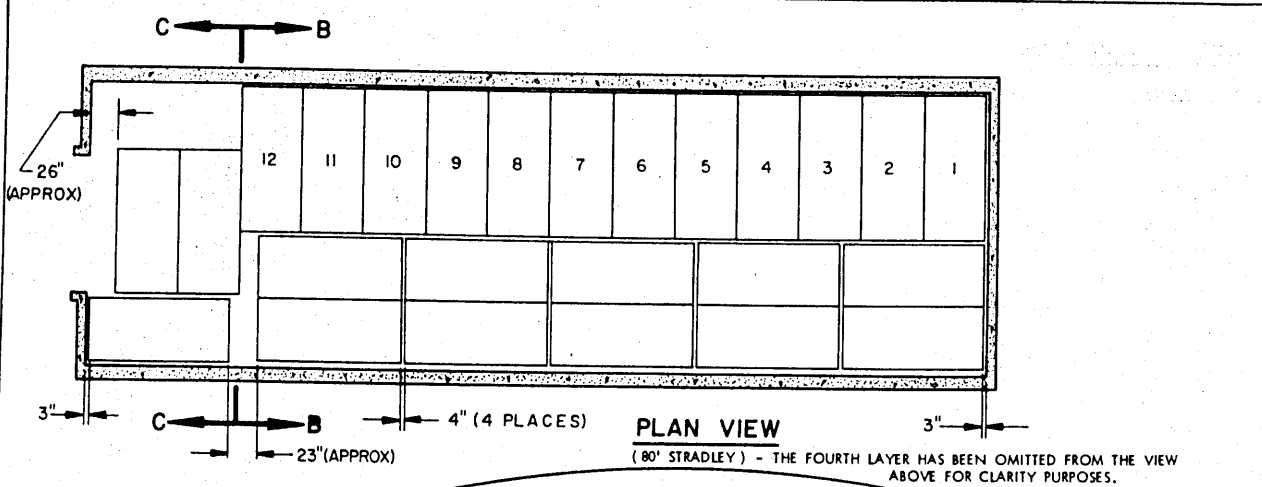


ISOMETRIC VIEW

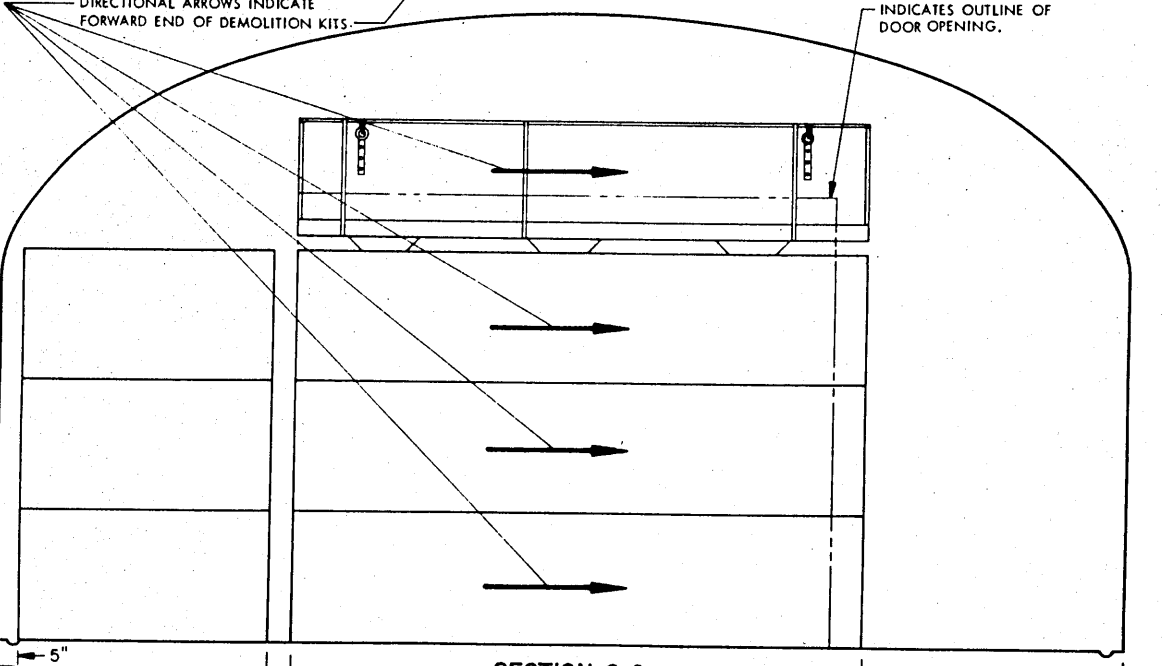
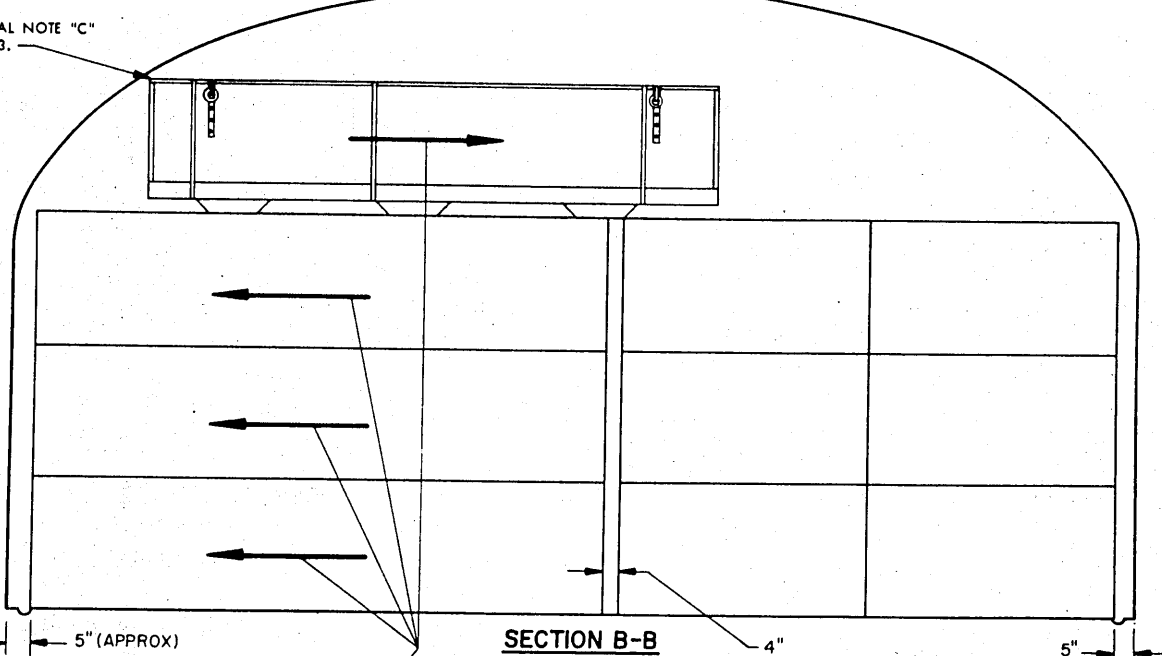
(60' IGLOO W/DOUBLE DOOR)

GENERAL NOTES

- A. DETAILS OF A DEMOLITION KIT PACK:
CRATE DIMENSIONS ----- 152-1/2" LONG X 66-1/2" WIDE X 35" HIGH.
UNIT GROSS WEIGHT ----- 4,000 POUNDS (APPROX).
- B. ITEM LOTS WILL NOT BE MIXED, BUT ONLY TO THE EXTENT THAT ITEMS OF ONE LOT WILL NOT BE STACKED ON TOP OF ITEMS FROM ANOTHER LOT.
- C. WHEN STORED, THE CRATES CONTAINING DEMOLITION KITS MUST NOT CONTACT A WALL OF A MAGAZINE.
- D. THE DIMENSIONS OF THE STORAGE PATTERNS SHOWN HEREIN MAY BE ADJUSTED TO SUIT LOCAL CONDITIONS AND/OR AVAILABLE MATERIALS HANDLING EQUIPMENT (MHE); HOWEVER, THE BASIC PATTERNS SPECIFIED MUST BE FOLLOWED AS CLOSELY AS POSSIBLE.
- E. IF DESIRED AND IF AVAILABLE MHE PERMITS, ADDITIONAL DEMOLITION KITS MAY BE STORED WITHIN THE FRONTAL AREA OF AN IGLOO MAGAZINE.
- F. **NOTICE:** ONLY DOUBLE-DOOR IGLOOS AS SHOWN HEREIN CAN BE USED FOR THE STORAGE OF THE SPECIFIED DEMOLITION KITS.
CAUTION: DEMOLITION KITS MUST NOT BE TIPPED ONTO THEIR SIDES.



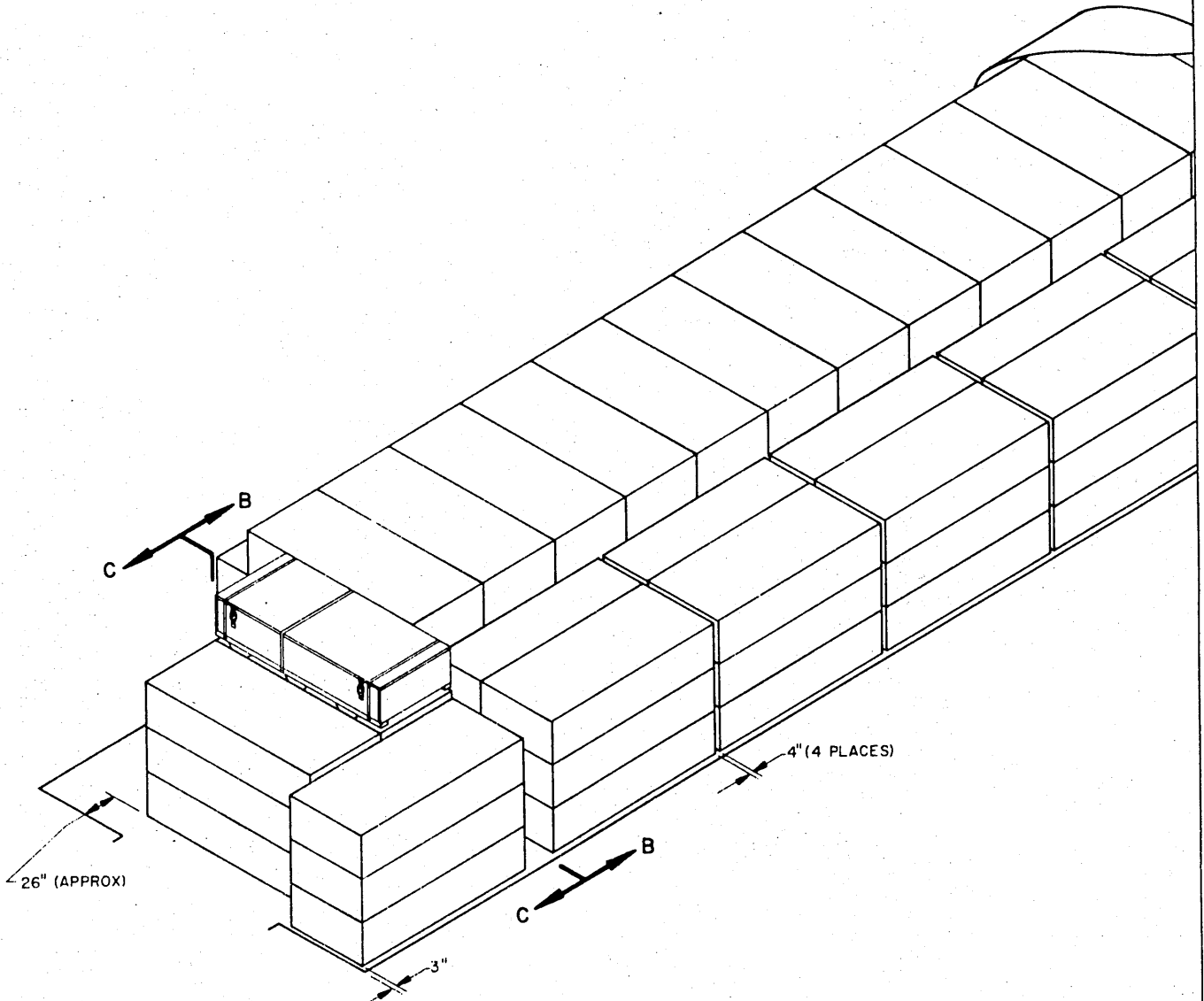
SEE GENERAL NOTE "C" ON PAGE 3.



STORAGE AS SHOWN

80' STRADLEY

ITEM QUANTITY
CRATE W/CONTENTS ----- 88



ISOMETRIC VIEW
(80' STRADLEY)

FOR "GENERAL NOTES", SEE PAGE 3.

