

APPROVED BY
 BUREAU OF EXPLOSIVES
D. F. Grassmuck
 MILITARY ASSISTANT
 DATE 5/16/68

R

UNITIZATION OF CDU ITEMS[⊕] PACKED TEN PER SKIDDED WOODEN BOX ON THE 463L (HCU-6/E) PALLET, AND LOADING AND BRACING (TL & LTL) OF THE DEPICTED PALLETIZED UNITS IN/ON TRAILERS[⊙]

INDEX

<u>ITEM</u>	<u>PAGE(S)</u>
GENERAL NOTES, AND MATERIAL SPECIFICATIONS-----	2
UNITIZATION OF CDU ITEMS (RELOAD KITS):	
PALLET AND LOAD SECURING DEVICE DETAILS-----	3
8-UNIT LOAD (NET AND STRAP METHOD)-----	4
8-UNIT LOAD (ALTERNATIVE METHOD-STRAPS ONLY)-----	5
7-UNIT LOAD-----	6
6-UNIT LOAD-----	7
5-UNIT LOAD-----	8
4-UNIT LOAD-----	9
3-UNIT LOAD-----	10
2-UNIT LOAD-----	11
1-UNIT LOAD-----	12
SPACER DETAILS-----	13
OUTLOADING PROCEDURES:	
32-UNIT LOAD (FOUR PALLETS) IN A CLOSED OR OPEN TOP VAN TRAILER-----	4, 15
32-UNIT LOAD (FOUR PALLETS) IN AN OPEN TOP TRAILER HAVING REMOVABLE SIDES-----	6, 17
32-UNIT LOAD (FOUR PALLETS) ON A FLAT BED TRAILER-----	8, 19
TYPICAL LTL-----	20

⊕ PROCEDURES SPECIFIED HEREIN ARE APPLICABLE TO THE CDU/4 AND CDU/10 SERIES RELOAD KITS AND OTHER SIMILAR KITS.

● THE SPECIFIED OUTLOADING PROCEDURES ARE APPLICABLE TO:

1. CLOSED OR OPEN TOP VAN TRAILERS.
2. OPEN TOP TRAILERS HAVING REMOVABLE SIDES.
3. FLAT BED TRAILERS.

DO NOT SCALE

DRAFTSMAN TRS	PROJ ENG RHA	APPR new	APPR PJS	SUBMITTED <i>W. S. Harding, Col.</i>
CHECKER JDS	AMC ARMO CTR SE			COMMANDING OFFICER, SAVANNAH ARMY DEPOT
REVISIONS				EXAMINED AND APPROVED <i>Ralph Hall</i>
				AMMUNITION PROCUREMENT & SUPPLY AGENCY
				APPROVED BY ORDER OF COMMANDING GENERAL, U. S. ARMY MATERIEL COMMAND
				<i>Ralph Hall</i>
				U. S. ARMY MATERIEL COMMAND
				JUNE 1968
				CLASS DIVISION DRAWING FILE
				19 48 4069 IIPA1002

GENERAL NOTES

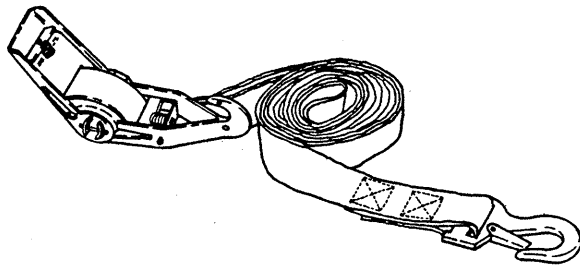
(GENERAL NOTES CONTINUED)

- A. THIS DOCUMENT HAS BEEN PREPARED AND ISSUED IN ACCORDANCE WITH AMCR 740-13, AND AUGMENTS TM 743-200-1 (CHAPTER 5).
- B. THE UNITIZATION OF THE CDU/4 AND CDU/10 SERIES RELOAD KITS ON THE AIR FORCE 463L SYSTEM PALLET (HCU-6/E) IS SHOWN ON PAGES 4 THRU 13. THE SPECIFIED UNITIZATION PROCEDURES ARE ALSO APPLICABLE TO OTHER SIMILAR KITS WHICH ARE PACKED IN THE SAME OUTSIDE CONTAINER. FULL PALLET LOADS OF EIGHT (8) UNITS AND PARTIAL PALLET LOADS OF SEVEN (7) THRU ONE (1), SECURED TO THE PALLET WITH TIEDOWN DEVICES OR WITH CARGO NETS AND TIEDOWN DEVICES, HAVE BEEN DEPICTED. CLOSURE STRAPS, MONITORING RECEPTACLES, AND TIEDOWN RINGS ARE NOT SHOWN ON THE BOXES FOR CLARITY PURPOSES.
1. CDU RELOAD KIT PACKS WILL BE POSITIONED ON THE AIR FORCE 463L SYSTEM PALLET (HCU-6/E) AS SHOWN HEREIN WITH THE MONITORING RECEPTACLES FACING THE 25" CENTER ACCESS AREA, TO ALLOW FOR IN-TRANSIT MONITORING OF THE ITEMS, AND WITH THE ENDS OF BOXES PLACED TIGHTLY TOGETHER.
 2. WHEN SIDE CARGO NETS ARE SPECIFIED IN THE PALLETIZATION PROCEDURES SHOWN HEREIN, TWO WILL BE USED. THE HOOKS ON THE BOTTOM OF EACH NET WILL BE SECURED INTO TIEDOWN RINGS ON THE PALLET (ONE HOOK TO ONE RING). THE TWO SIDE CARGO NETS WILL BE LOCATED SO THAT THEY ARE CONNECTED (HOOKED TOGETHER) AT OPPOSITE CORNERS OF THE PALLET. THE NETS SHOULD THEN BE RAISED TO COVER THE LOAD, AND THE SLIDE BARS AND THE SIDE HOOKS ADJUSTED SO THAT THE NETS FIT SNUGLY AROUND THE LOAD. THE TIEDOWN DEVICE AS SPECIFIED HEREIN SHOULD THEN BE INSTALLED.
 3. WHEN APPLYING TIEDOWN DEVICES THERE MUST BE AT LEAST ONE (1) COMPLETE WRAP OF THE STRAP AROUND THE SPOOL OF THE TENSIONING RATCHET PRIOR TO EXERTION OF FORCE ON THE RATCHET HANDLE. WHEN TENSIONING, THE FREE END OF THE STRAP SHOULD BE GUIDED TO LAY FLAT AND PARALLEL WITH THE STRAP UNDER TENSION, TO PREVENT JAMMING OF THE RATCHET. AFTER TENSIONING OF TIEDOWN DEVICES, ALL RATCHET HANDLES SHOULD BE PLACED IN THE CLOSED AND LOCKED POSITION (DOWN). **CAUTION:** THE RATCHET OF THE TIEDOWN DEVICE SHALL BE LOCATED SO THAT IT WILL NOT PROTRUDE BEYOND THE PERIMETER OF THE PALLET.
 4. THE LOOSE END OF ALL TIEDOWN DEVICES WILL BE FOLDED BACK ONTO STRAP UNDER TENSION AND SECURED WITH TAPE OR WIRE. ADEQUATE SLACK SHOULD BE LEFT BETWEEN THE RATCHET AND THE FOLDED LOOSE END OF A STRAP TO PERMIT UNHOOKING OF THE DEVICE WITHOUT RELEASING THE FOLDED AND SECURED STRAP. SEE THE ENLARGED DETAIL IN UPPER RIGHT HAND CORNER OF PAGE 4.
- C. THE OUTLOADING PROCEDURES SPECIFIED HEREIN ARE APPLICABLE TO THE SHIPMENT OF FOUR (4) OR LESS OF THE PALLET UNITS DEPICTED HEREIN ABOARD CLOSED OR OPEN TOP VAN TRAILERS, IN OPEN TOP TRAILERS HAVING REMOVABLE SIDES, AND ON FLAT BED TRAILERS. **NOTE:** PALLET UNITS WILL BE LOADED WITH THE 88" SIDES OF THE PALLETS POSITIONED ACROSS THE WIDTH OF THE TRAILER BEING USED.
- D. THE SELECTION OF AN OUTLOADING METHOD FROM THE PROCEDURES SHOWN HEREIN WILL BE DEPENDENT UPON THE TYPE OF TRAILER OFFERED FOR LOADING. THE AVAILABLE LOADING AND UNLOADING FACILITIES AND HANDLING EQUIPMENT WILL PROBABLY DICTATE THE TYPE OF TRAILER WHICH SHOULD BE ORDERED FOR A MOVE. FOR INSTANCE, A CLOSED OR OPEN TOP VAN CAN ONLY BE LOADED THROUGH THE REAR DOORS, AND A FLAT BED TRAILER OR A REMOVABLE SIDE TRAILER CAN ONLY BE LOADED FROM THE SIDE. **NOTE:** THAT A REMOVABLE SIDE TRAILER CAN ALSO BE USED, IF SO DESIRED, AS A CLOSED OR OPEN TOP VAN TYPE TRAILER, RELATIVE TO THE OUTLOADING PROCEDURES DELINEATED HEREIN.
- E. THE 32-UNIT LOAD (4 PALLETS) SHOWN ON PAGES 14 AND 15 IS BASED ON A CLOSED OR OPEN TOP VAN TRAILER WHICH IS 40'-0" LONG BY 7'-6" WIDE (INSIDE DIMENSION) AND CAN HAVE A WOOD, OR A WOOD AND METAL, OR A METAL FLOOR. WIDER TRAILERS MAY BE USED. A TRAILER NOT HAVING REAR CORNER POSTS IS SHOWN AND IS RECOMMENDED FOR EASE IN LOADING AND UNLOADING OF THE PALLETS; HOWEVER, A TRAILER HAVING CORNER POSTS MAY BE USED PROVIDING THE WIDTH OF THE DOOR OPENING MEASURES AT LEAST 88-1/2". IF TRAILERS WITH REAR CORNER POSTS ARE USED, THE REAR BLOCKING MUST CONTACT THE POSTS AND/OR REAR DOORS WHEN CLOSED.
- F. THE 32-UNIT LOAD (4 PALLETS) SHOWN ON PAGES 16 AND 17 IS BASED ON A 40'-0" LONG BY 7'-6" WIDE (INSIDE DIMENSION) OPEN TOP TRAILER HAVING REMOVABLE SIDES AND WHICH CAN HAVE A WOOD, OR A WOOD AND METAL, OR A METAL FLOOR. WIDER TRAILERS MAY BE USED. **NOTE:** THAT REAR CORNER POSTS WILL NOT INTERFERE WITH THE DEPICTED OUTLOADING METHODS.
- G. THE 32-UNIT LOAD (4 PALLETS) SHOWN ON PAGES 18 AND 19 IS BASED ON A 40'-0" LONG BY 8'-0" WIDE FLAT BED TRAILER WHICH CAN HAVE A WOOD, OR A WOOD AND METAL FLOOR. TRAILERS HAVING ALL METAL FLOORS WILL NOT BE USED.
- H. FOR DETAILS OF THE RELOAD KIT CONTAINER, SEE DRAWING NO. 9226267. CONTAINER DIMENSIONS ----- 43-1/8" LONG X 39" WIDE X 26-3/4" HIGH. GROSS WEIGHT (MAX) ----- 800 POUNDS (APPROX).
- FOR DETAILS OF THE PALLET UNITS, SEE PAGES 3 THRU 12.
- J. THE GROSS WEIGHT AND AXLE DISTRIBUTION OF WEIGHT OF A LOAD WILL BE THE RESPONSIBILITY OF THE CARRIER. THE CARRIER WILL ADVISE THE SHIPPER OF THE APPLICABLE LOADING REQUIREMENTS AND THE SHIPPER WILL LOAD ACCORDINGLY.
- K. THE NUMBER OF PALLET UNITS MAY BE ADJUSTED TO FIT THE SIZE OF THE TRAILER BEING LOADED OR THE QUANTITY TO BE SHIPPED; HOWEVER, THE APPROVED METHODS SPECIFIED HEREIN FOR BLOCKING AND BRACING FULL OR PARTIAL LOADS MUST BE FOLLOWED AS CLOSELY AS POSSIBLE.
- L. WHEN STEEL STRAPPING IS SEALED AT AN END-OVER-END LAP JOINT, A MINIMUM OF TWO (2) SEALS, BUTTED TOGETHER, WITH TWO (2) PAIR OF CRIMPS PER SEAL MUST BE USED TO SEAL THE JOINT.
- M. FOR FLAT BED TRAILER LOADING, IF THE STAKE POCKETS AND/OR ANCHOR DEVICES ARE NOT PROPERLY LOCATED TO PERMIT SECURING OF THE TWO INCH (2") STEEL STRAPPING AS SHOWN, OR IF THE POCKETS AND/OR ANCHOR DEVICES ARE NOT EQUAL TO OR GREATER THAN THE STRENGTH OF THE TIE-DOWN STRAPS, STRAPPING MAY BE APPLIED TO FORM A COMPLETE LOOP WHICH ENCOMPASSES BOTH THE LADING AND THE TRAILER FRAME AND/OR BED. **CAUTION:** WHEN INSTALLING A TIE-DOWN STRAP WHICH ENCOMPASSES BOTH LADING AND TRAILER FRAME AND/OR BED, AVOID THE TRAILER WHEELS, FIFTH WHEEL PLATE, CONTROLS, AND OTHER APPURTENANCES. USE EDGE PROTECTORS OR PADS ON ALL SHARP EDGES AS CUSHIONING FOR THE STRAPPING. **NOTE:** PROVISIONS OF GENERAL NOTE "L" ABOVE WILL ALSO APPLY.
- N. **NOTE:** LADING IS NOT TO BE SECURED TO A FLAT BED TRAILER BY CHAINS AND/OR LOAD BINDERS IN LIEU OF THE SPECIFIED DUNNAGE.
- O. DUNNAGE LUMBER SPECIFIED THROUGHOUT THIS PROCEDURAL DRAWING IS OF NOMINAL SIZE. FOR EXAMPLE, 2" X 4" MATERIAL IS ACTUALLY 1-5/8" THICK BY 3-5/8" WIDE AND 2" X 8" MATERIAL IS ACTUALLY 1-5/8" THICK BY 7-1/2" WIDE.
- P. A STAGGERED NAILING PATTERN WILL BE USED WHEREVER POSSIBLE WHEN NAILS ARE DRIVEN INTO JOINTS OF DUNNAGE ASSEMBLIES. ALSO, A STAGGERED NAILING PATTERN WILL BE USED WHEN DUNNAGE IS NAILED TO THE FLOOR OF THE TRANSPORTING VEHICLE, OR WHEN LAMINATING DUNNAGE. ADDITIONALLY, THE NAILING PATTERN FOR AN UPPER PIECE OF LAMINATED DUNNAGE WILL BE ADJUSTED AS REQUIRED SO THAT A NAIL FOR THAT PIECE WILL NOT BE DRIVEN THROUGH ONTO OR RIGHT BESIDE A NAIL IN A LOWER PIECE.
- Q. PORTIONS OF THE TRAILER BODIES DEPICTED WITHIN THIS PROCEDURAL DRAWING, SUCH AS ONE OF THE SIDE WALLS OF THE CLOSED OR OPEN TOP VAN AND THE SIDE RACKS OF THE REMOVABLE SIDE TRAILER, HAVE NOT BEEN SHOWN IN THE LOAD VIEWS FOR CLARITY PURPOSES.
- R. FOR ADDITIONAL GUIDANCE, ATTENTION IS DIRECTED TO THE "SPECIAL NOTES" SECTIONS WHICH ARE IMMEDIATELY ADJACENT TO THE DEPICTED OUTLOADING METHODS.
- S. UNITIZATION METHODS SHOWN HAVE BEEN TESTED AND MEET RESTRAINT REQUIREMENTS FOR TIE-DOWN IN AIRCRAFT.

(GENERAL NOTES CONTINUED AT RIGHT)

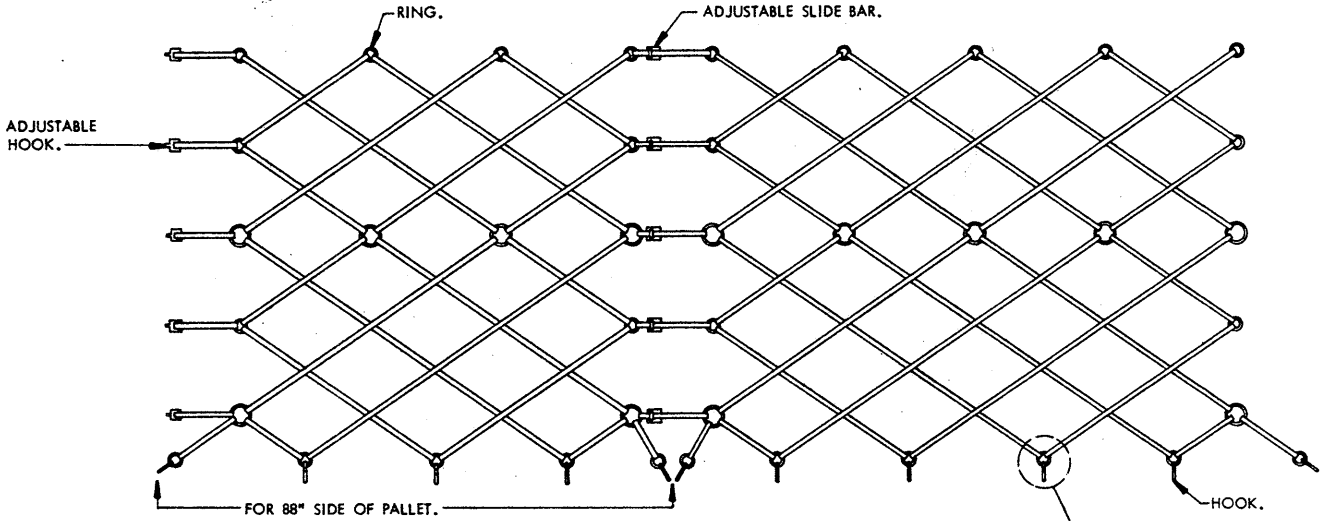
MATERIAL SPECIFICATIONS

- LUMBER** ----- : SEE TM 743-200-1, DUNNAGE LUMBER, FED SPEC MM-L-751.
- NAILS** ----- : COMMON, CEMENT COATED OR CHEMICALLY ETCHED, FED SPEC FF-N-105.
ALT: ANNULAR-RING TYPE NAIL OF SAME SIZE.
- STEEL STRAPPING** ----- : TYPE I OR IV, CLASS A OR B OR C, FED SPEC QQ-S-781.
- STRAP SEAL, STRAP STAPLE, STAKE POCKET PROTECTOR** : COMMERCIAL GRADE.
- PALLET** ----- : 463L SYSTEM (HCU-6/E), MIL SPEC MIL-P-27443.
- TIEDOWN DEVICE** ----- : CGU-1/B, MIL SPEC MIL-T-27260.
- SIDE CARGO NET** ----- : AIR FORCE DRAWING NO. 67F46303, MIL SPEC MIL-N-27444.
- ROLLER CONVEYOR** ----- : CHANNEL FRAME, ROLLERS HIGH, COMMERCIAL GRADE.



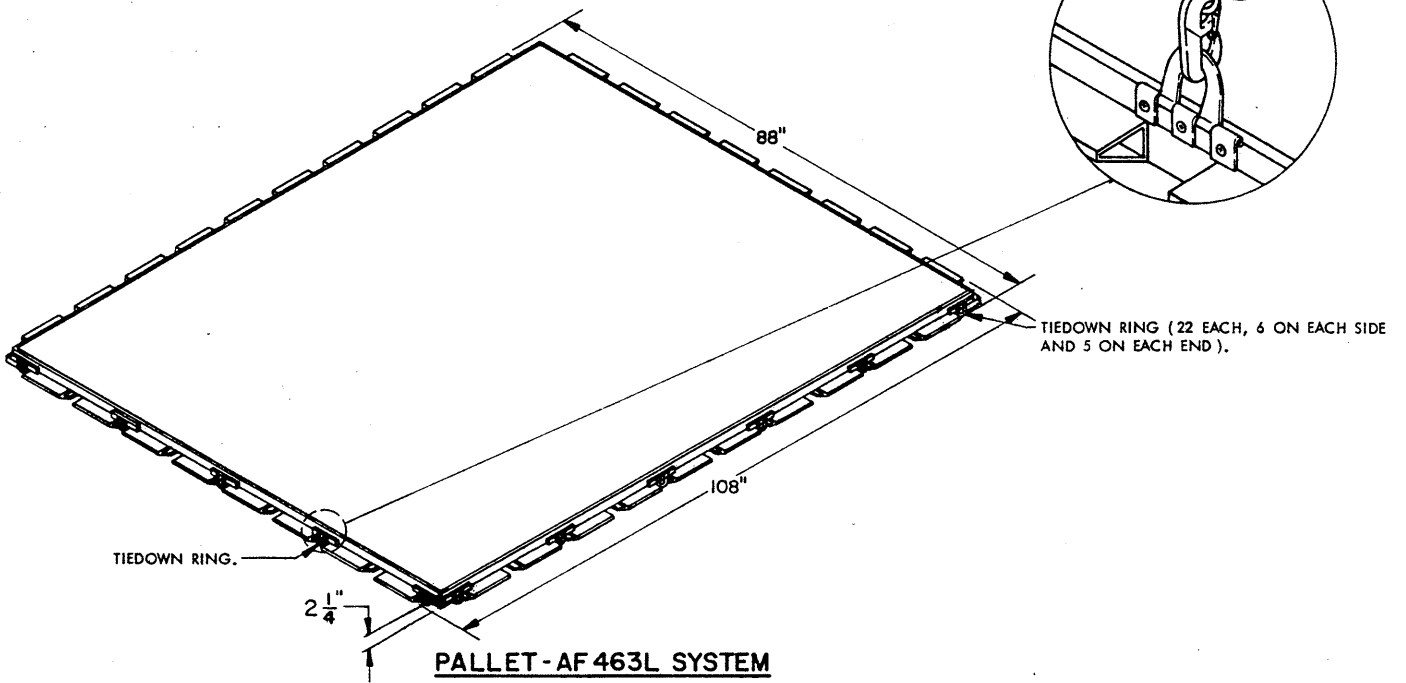
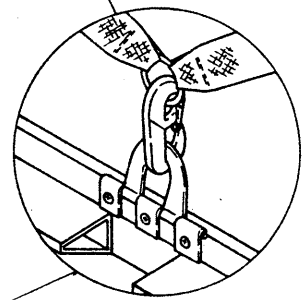
TIEDOWN DEVICE

(CGU-1/B)



SIDE CARGO NET

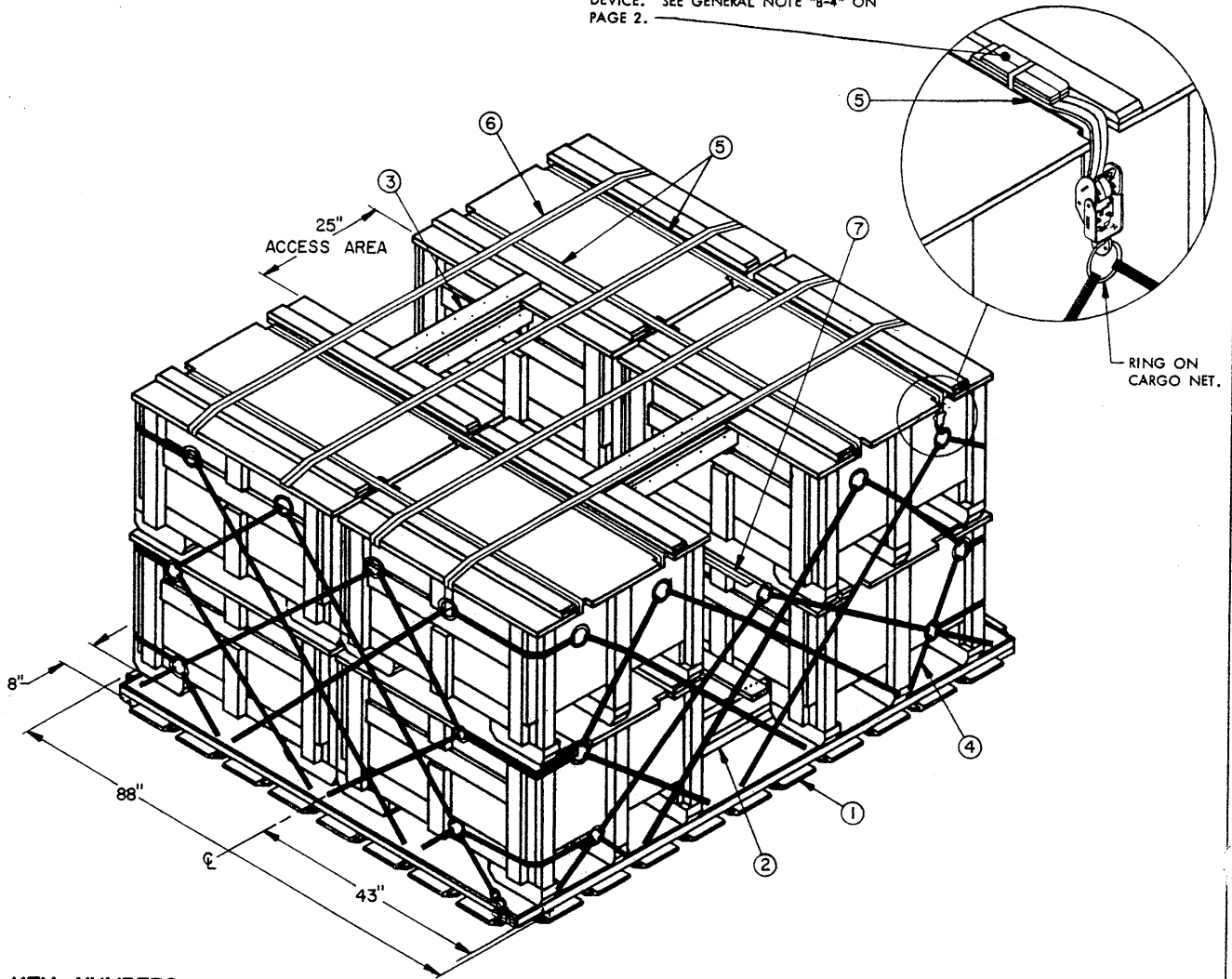
(HCU-7/E)



PALLET - AF 463L SYSTEM

(HCU-6/E)

SECURING OF LOOSE END OF TIEDOWN DEVICE. SEE GENERAL NOTE "B-4" ON PAGE 2.



KEY NUMBERS

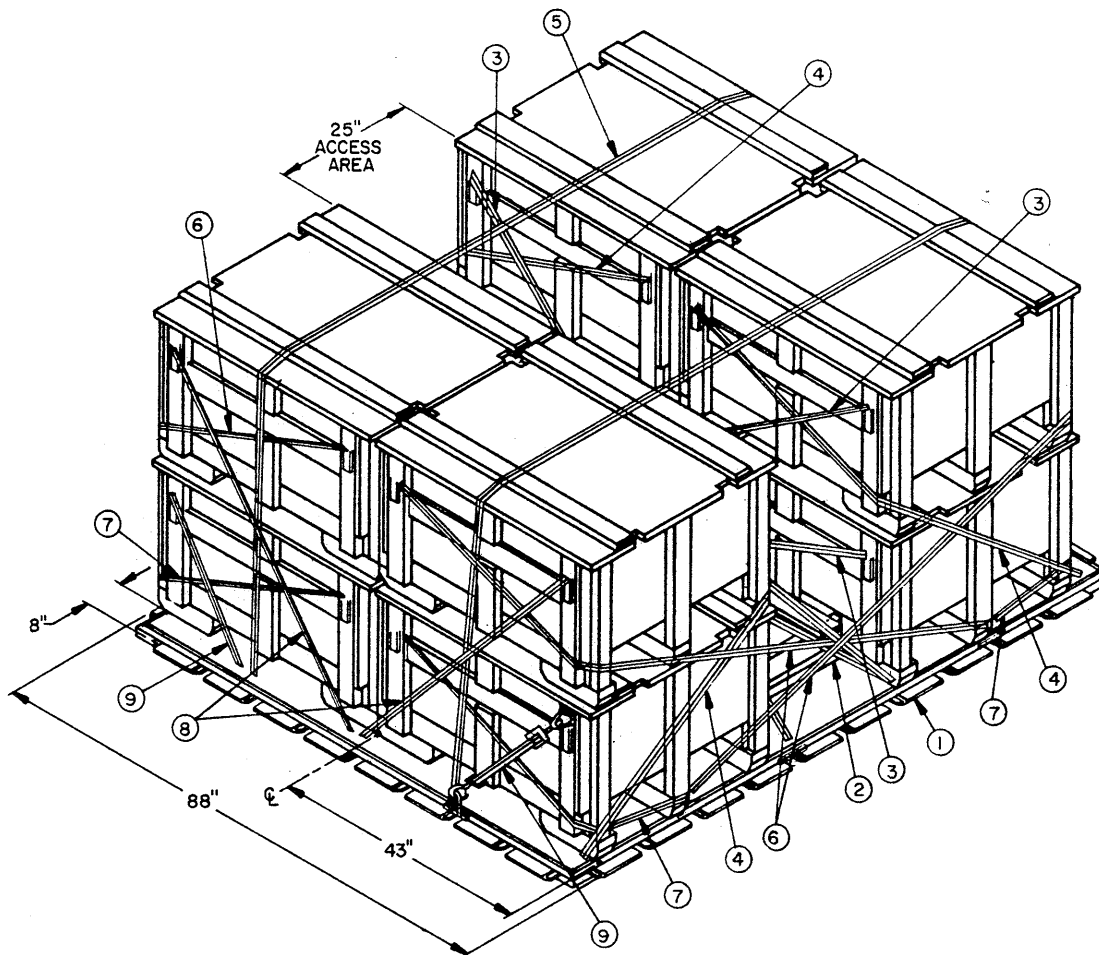
- ① PALLET, AF-463L (HCU-6/E), 1 REQD.
- ② SPACER "A", 1 REQD. FOR DETAILS, SEE PAGE 13.
- ③ SPACER "B", 2 REQD. FOR DETAILS, SEE PAGE 13.
- ④ SIDE CARGO NET, 2 REQD. SECURE HOOKS ON NET INTO TIEDOWN RINGS ON PALLET. SEE DETAIL ON PAGE 3 FOR SECUREMENT OF NET HOOKS, AND GENERAL NOTE "B" ON PAGE 2 FOR PLACEMENT OF NETS AND INSTALLATION OF TIEDOWN DEVICES.
- ⑤ TIEDOWN DEVICE, 4 REQD. SECURE HOOK ON ONE END OF DEVICE INTO UPPER RING ON CARGO NET ON ONE SIDE OF LOAD, EXTEND DEVICE OVER SECOND LAYER CONTAINERS, SECURE HOOK ON OTHER END OF DEVICE INTO UPPER RING ON CARGO NET ON OTHER SIDE OF LOAD, AND RATCHET TENSION.
- ⑥ TIEDOWN DEVICE, 4 REQD. SECURE HOOK ON ONE END OF DEVICE INTO UPPER RING ON CARGO NET ON ONE SIDE OF LOAD, EXTEND DEVICE OVER SECOND LAYER CONTAINERS, SECURE HOOK ON OTHER END OF DEVICE INTO UPPER RINGS ON CARGO NET ON OTHER SIDE OF LOAD, AND RATCHET TENSION.
- ⑦ TIEDOWN DEVICE, 1 REQD. SECURE HOOK ON ONE END OF DEVICE INTO RING ON CARGO NET ON ONE SIDE OF LOAD, EXTEND BETWEEN CONTAINER STACKS, AND SECURE HOOK ON OTHER END OF DEVICE INTO RING ON CARGO NET ON OTHER SIDE OF LOAD, AND RATCHET TENSION.

BILL OF MATERIAL (SPACERS)

LUMBER	LINEAR FEET	BOARD FEET
1" X 4"	17.2	5.80
1" X 6"	11.0	5.50
2" X 4"	23.0	15.34
NAILS	NO. REQD	POUNDS
6d (2")	36	0.22
10d (3")	54	0.84

LOAD AS SHOWN

ITEM	QUANTITY	WEIGHT (APPROX)
RELOAD KIT PACK	8	6,400 LBS
SPACERS		62 LBS
SIDE CARGO NET	2	44 LBS
TIEDOWN DEVICE	9	34 LBS
PALLET	1	300 LBS
TOTAL WEIGHT		6,840 LBS



KEY NUMBERS

- ① PALLET, AF-463L (HCU-6/E), 1 REQD.
- ② SPACER "A", 1 REQD. FOR DETAILS, SEE PAGE 13.
- ③ TIEDOWN DEVICE, 8 REQD (4 EACH STACK OF 4 CNTRS, 2 EACH LAYER). SECURE HOOK ON ONE END OF DEVICE INTO TIEDOWN RING ON A FIRST LAYER CONTAINER, EXTEND DEVICE DIAGONALLY ACROSS THE 25" WIDE ACCESS AREA, AND SECURE HOOK ON OTHER END OF DEVICE INTO TIEDOWN RING ON OPPOSITE SIDE OF PALLET, AND RATCHET TENSION. REPEAT FOR SECOND LAYER CONTAINERS. SEE GENERAL NOTE "B" ON PAGE 2 FOR INSTALLATION OF THE TIEDOWN DEVICES.
- ④ TIEDOWN DEVICE, 4 REQD. SECURE HOOK ON ONE END OF DEVICE INTO TIEDOWN RING ON A TOP LAYER CONTAINER, EXTEND DEVICE AROUND END OF STACK, AND SECURE HOOK ON OTHER END OF DEVICE INTO TIEDOWN RING AT CORNER OF PALLET, AND RATCHET TENSION.
- ⑤ TIEDOWN DEVICE, 2 REQD. SECURE HOOK ON ONE END OF DEVICE INTO TIEDOWN RING ON PALLET, EXTEND DEVICE OVER SECOND LAYER CONTAINERS AND SECURE HOOK ON OTHER END OF DEVICE INTO TIEDOWN RING ON OTHER SIDE OF PALLET, AND RATCHET TENSION.
- ⑥ TIEDOWN DEVICE, 4 REQD. SECURE HOOK ON ONE END OF DEVICE INTO TIEDOWN RING ON A TOP LAYER CONTAINER, EXTEND DEVICE AROUND END OF STACK AND SECURE HOOK ON OTHER END OF DEVICE INTO TIEDOWN RING ON SIDE OF PALLET, AND RATCHET TENSION.
- ⑦ TIEDOWN DEVICE, 4 REQD. SECURE HOOK ON ONE END OF DEVICE INTO TIEDOWN RING ON A FIRST LAYER CONTAINER, EXTEND DEVICE AROUND END OF STACK AND SECURE HOOK ON OTHER END OF DEVICE INTO TIEDOWN RING ON SIDE OF PALLET, AND RATCHET TENSION.

(KEY NUMBERS CONTINUED)

- ⑧ TIEDOWN DEVICE, 4 REQD. SECURE HOOK ON ONE END OF DEVICE INTO TIEDOWN RING ON A SECOND LAYER CONTAINER, AND SECURE HOOK ON OTHER END OF DEVICE INTO TIEDOWN RING ON END OF PALLET, AND RATCHET TENSION.
- ⑨ TIEDOWN DEVICE, 4 REQD. SECURE HOOK ON ONE END OF DEVICE INTO TIEDOWN RING ON A FIRST LAYER CONTAINER, AND SECURE HOOK ON OTHER END OF DEVICE INTO TIEDOWN RING ON END OF PALLET, AND RATCHET TENSION.

BILL OF MATERIAL (SPACER)

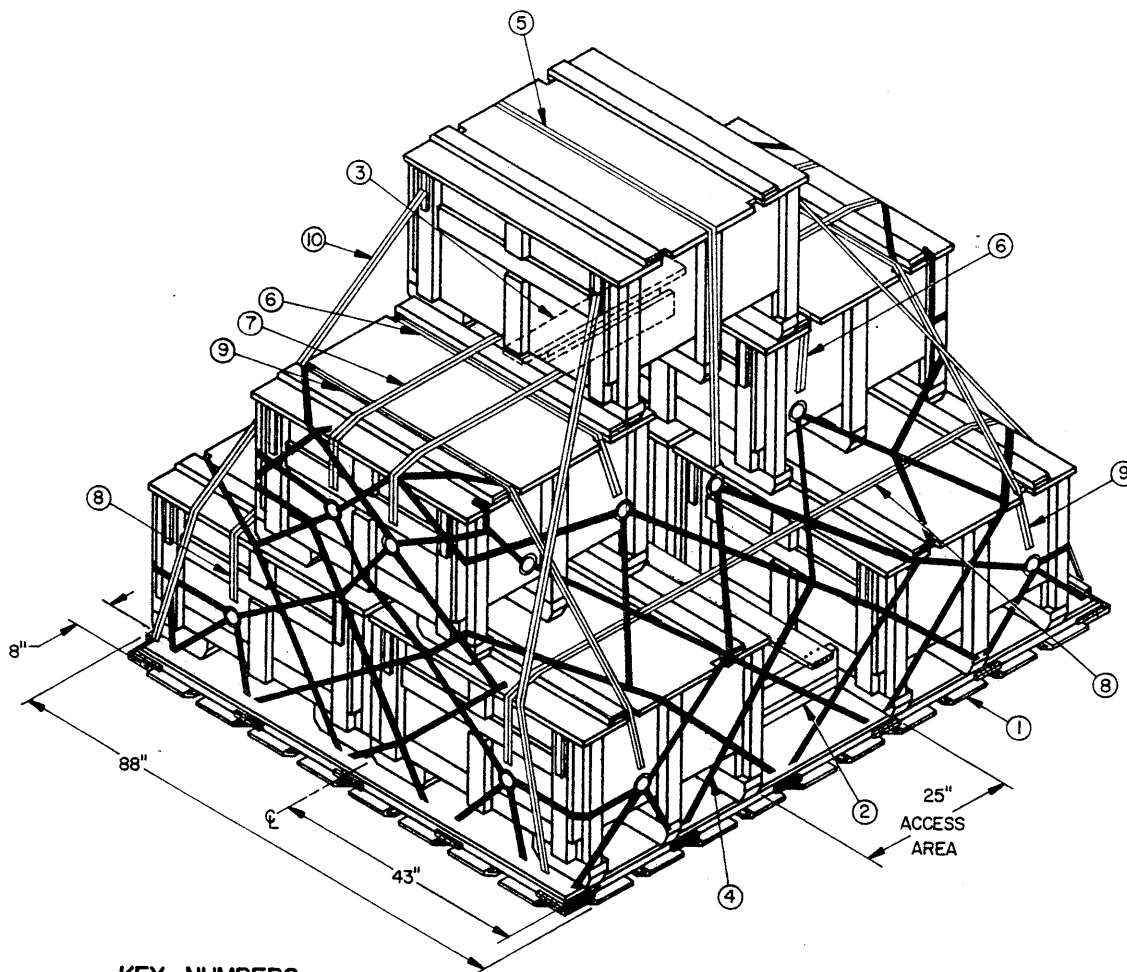
LUMBER	LINEAR FEET	BOARD FEET
1" X 6"	11.0	5.5
2" X 4"	19.2	12.8
NAILS	NO. REQD	POUNDS
6d (2")	24	0.15
10d (3")	20	0.31

LOAD AS SHOWN

ITEM	QUANTITY	WEIGHT (APPROX)
RELOAD KIT PACK	8	6,400 LBS
SPACER "A"	1	41 LBS
TIEDOWN DEVICE	30	113 LBS
PALLET	1	300 LBS

TOTAL WEIGHT ----- 6,854 LBS

8-UNIT LOAD (ALTERNATIVE)



KEY NUMBERS

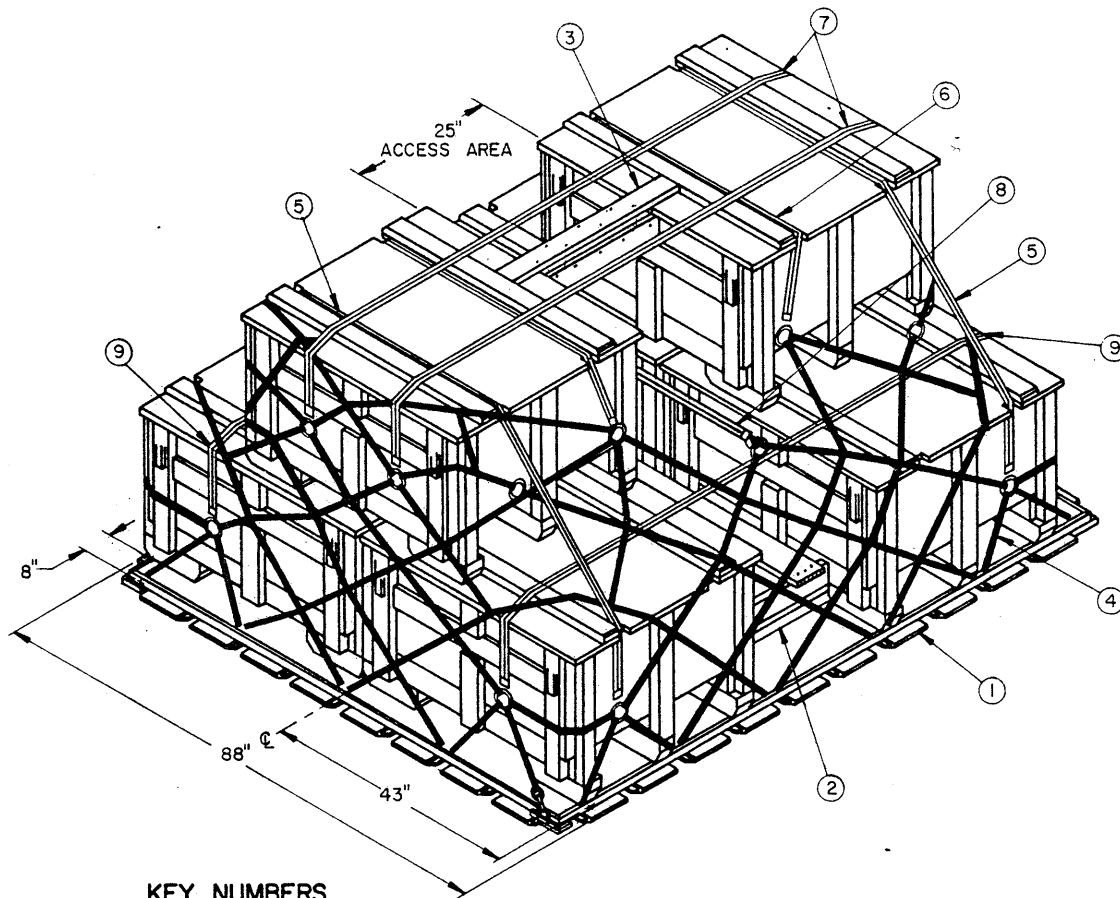
- ① PALLET, AF-463L (HCU-6/E), 1 REQD.
- ② SPACER "A", 1 REQD. FOR DETAILS, SEE PAGE 13.
- ③ SPACER "B", 1 REQD. FOR DETAILS, SEE PAGE 13.
- ④ SIDE CARGO NET, 2 REQD. SECURE HOOKS ON NET INTO TIEDOWN RINGS ON PALLET. SEE DETAIL ON PAGE 3 FOR SECUREMENT OF NET HOOKS, AND GENERAL NOTE "B" ON PAGE 2 FOR PLACEMENT OF NETS AND INSTALLATION OF TIEDOWN DEVICES.
- ⑤ TIEDOWN DEVICE, 1 REQD. SECURE HOOK ON ONE END OF DEVICE INTO UPPER RING ON CARGO NET, EXTEND DEVICE OVER THIRD LAYER CONTAINER, AND SECURE HOOK ON OTHER END OF DEVICE INTO UPPER RING ON CARGO NET ON OTHER SIDE OF LOAD, AND RATCHET TENSION.
- ⑥ TIEDOWN DEVICE, 2 REQD. SECURE HOOK ON ONE END OF DEVICE INTO UPPER RING ON CARGO NET, EXTEND DEVICE OVER A SECOND LAYER CONTAINER, AND SECURE HOOK ON OTHER END OF DEVICE INTO UPPER RING ON CARGO NET ON OTHER SIDE OF LOAD, AND RATCHET TENSION.
- ⑦ TIEDOWN DEVICE, 2 REQD. SECURE HOOK ON ONE END OF DEVICE INTO RING ON CARGO NET, EXTEND DEVICE OVER SECOND LAYER CONTAINERS (UNDER THIRD LAYER CONTAINER), AND SECURE HOOK ON OTHER END OF DEVICE INTO RING ON CARGO NET ON OTHER SIDE OF LOAD, AND RATCHET TENSION.
- ⑧ TIEDOWN DEVICE, 2 REQD. SECURE HOOK ON ONE END OF DEVICE INTO RING ON CARGO NET, EXTEND DEVICE OVER FIRST LAYER CONTAINERS (UNDER CARGO NET), AND SECURE HOOK ON OTHER END OF DEVICE INTO RING IN CARGO NET ON OTHER SIDE OF LOAD, AND RATCHET TENSION.
- ⑨ TIEDOWN DEVICE, 2 REQD. SECURE HOOK ON ONE END OF DEVICE INTO RING ON CARGO NET, EXTEND DEVICE OVER A SECOND LAYER CONTAINER, AND SECURE HOOK ON OTHER END OF DEVICE INTO RING ON CARGO NET ON OTHER SIDE OF LOAD, AND RATCHET TENSION.
- ⑩ TIEDOWN DEVICE, 4 REQD. SECURE HOOK ON ONE END OF DEVICE INTO A TIEDOWN RING ON THIRD LAYER CONTAINER, AND SECURE HOOK ON OTHER END OF DEVICE INTO TIEDOWN RING AT CORNER OF PALLET, AND RATCHET TENSION.

BILL OF MATERIAL (SPACERS)

LUMBER	LINEAR FEET	BOARD FEET
1" X 4"	8.6	2.9
1" X 6"	11.0	5.5
2" X 4"	21.0	14.0
NAILS	NO. REQD	POUNDS
6d (2")	30	0.18
10d (3")	37	0.57

LOAD AS SHOWN

ITEM	QUANTITY	WEIGHT (APPROX)
RELOAD KIT PACK	7	5,600 LBS
SPACERS		52 LBS
SIDE CARGO NET	2	44 LBS
TIEDOWN DEVICE	13	49 LBS
PALLET	1	300 LBS
TOTAL WEIGHT		6,045 LBS



KEY NUMBERS

- ① PALLET, AF-463L (HCU-6/E), 1 REQD.
- ② SPACER "A", 1 REQD. FOR DETAILS, SEE PAGE 13.
- ③ SPACER "B", 1 REQD. FOR DETAILS, SEE PAGE 13.
- ④ SIDE CARGO NET, 2 REQD. SECURE HOOKS ON NET INTO TIEDOWN RINGS ON PALLET. SEE DETAIL ON PAGE 3 FOR SECUREMENT OF NET HOOKS, AND GENERAL NOTE "B" ON PAGE 2 FOR PLACEMENT OF NETS AND INSTALLATION OF TIEDOWN DEVICES.
- ⑤ TIEDOWN DEVICE, 2 REQD. SECURE HOOK ON ONE END OF DEVICE INTO LOWER RING ON CARGO NET, EXTEND DEVICE OVER SECOND LAYER CONTAINER, SECURE HOOK ON OTHER END OF DEVICE INTO LOWER RING ON CARGO NET ON OTHER SIDE OF LOAD, AND RATCHET TENSION.
- ⑥ TIEDOWN DEVICE, 2 REQD. SECURE HOOK ON ONE END OF DEVICE INTO UPPER RING ON CARGO NET, EXTEND DEVICE OVER SECOND LAYER CONTAINER, SECURE HOOK ON OTHER END OF DEVICE INTO UPPER RING ON CARGO NET ON OTHER SIDE OF LOAD, AND RATCHET TENSION.
- ⑦ TIEDOWN DEVICE, 2 REQD. SECURE HOOK ON ONE END OF DEVICE INTO UPPER RING ON CARGO NET, EXTEND DEVICE OVER SECOND LAYER CONTAINERS, SECURE HOOK ON OTHER END OF DEVICE INTO UPPER RING OF CARGO NET ON OTHER SIDE OF LOAD, AND RATCHET TENSION.
- ⑧ TIEDOWN DEVICE, 1 REQD. SECURE HOOK ON ONE END OF DEVICE INTO UPPER RING ON CARGO NET, EXTEND DEVICE THROUGH ACCESS AREA, AND SECURE HOOK ON OTHER END OF DEVICE INTO UPPER RING ON CARGO NET ON OTHER SIDE OF LOAD, AND RATCHET TENSION.
- ⑨ TIEDOWN DEVICE, 2 REQD. SECURE HOOK ON ONE END OF DEVICE INTO LOWER RING ON CARGO NET, EXTEND DEVICE OVER FIRST LAYER CONTAINERS (UNDER CARGO NET), AND SECURE HOOK ON OTHER END OF DEVICE INTO LOWER RING ON CARGO NET ON OTHER SIDE OF LOAD, AND RATCHET TENSION.

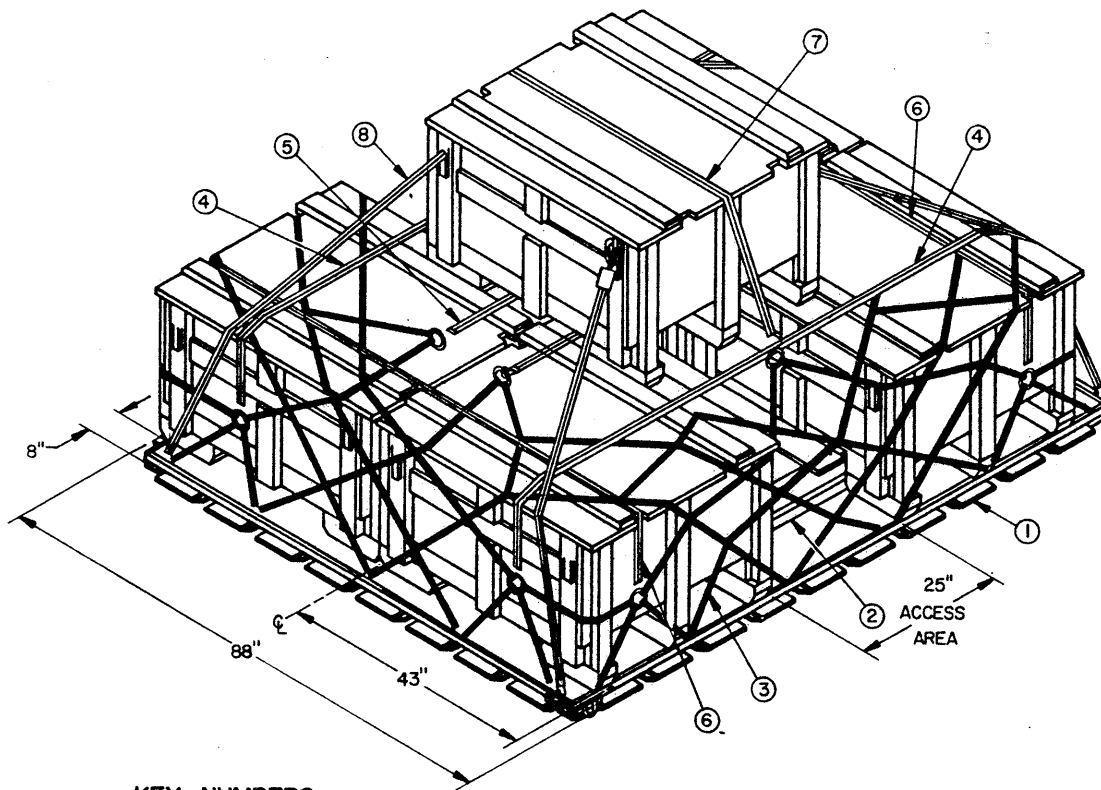
BILL OF MATERIAL

LUMBER	LINEAR FEET	BOARD FEET
1" X 4"	8.6	2.9
1" X 6"	11.0	5.5
2" X 4"	21.0	14.0
NAILS	NO. REQD	POUNDS
6d (2")	30	0.18
10d (3")	37	0.57

LOAD AS SHOWN

ITEM	QUANTITY	WEIGHT (APPROX)
RELOAD KIT PACK	6	4,800 LBS
SPACERS		52 LBS
SIDE CARGO NET	2	44 LBS
TIEDOWN DEVICE	9	34 LBS
PALLET	1	300 LBS

TOTAL WEIGHT ----- 5,230 LBS



KEY NUMBERS

- ① PALLET, AF-463L (HCU-6/E), 1 REQD.
- ② SPACER "A", 1 REQD. FOR DETAILS, SEE PAGE 13.
- ③ SIDE CARGO NET, 2 REQD. SECURE HOOKS ON NET INTO TIEDOWN RINGS ON PALLET. SEE DETAIL ON PAGE 3 FOR SECUREMENT OF NET HOOKS, AND GENERAL NOTE "B" ON PAGE 2 FOR PLACEMENT OF NETS AND INSTALLATION OF TIEDOWN DEVICES.
- ④ TIEDOWN DEVICE, 2 REQD. SECURE HOOK ON ONE END OF DEVICE INTO LOWER RING ON CARGO NET, EXTEND DEVICE OVER FIRST LAYER CONTAINERS, SECURE HOOK ON OTHER END OF DEVICE INTO LOWER RING ON NET ON OTHER SIDE OF LOAD, AND RATCHET TENSION.
- ⑤ TIEDOWN DEVICE, 2 REQD. SECURE HOOK ON ONE END OF DEVICE INTO UPPER RING ON CARGO NET, EXTEND DEVICE OVER FIRST LAYER CONTAINERS (UNDER SECOND LAYER CONTAINER), SECURE HOOK ON OTHER END OF DEVICE INTO UPPER RING ON CARGO NET ON OTHER SIDE OF LOAD, AND RATCHET TENSION.
- ⑥ TIEDOWN DEVICE, 2 REQD. SECURE HOOK ON ONE END OF DEVICE INTO LOWER RING ON CARGO NET, EXTEND DEVICE OVER FIRST LAYER CONTAINERS, SECURE HOOK ON OTHER END OF DEVICE INTO LOWER RING ON CARGO NET ON OTHER SIDE OF LOAD, AND RATCHET TENSION.
- ⑦ TIEDOWN DEVICE, 1 REQD. SECURE HOOK ON ONE END OF DEVICE INTO UPPER RING ON CARGO NET, EXTEND DEVICE OVER SECOND LAYER CONTAINER, SECURE HOOK ON OTHER END OF DEVICE INTO UPPER RING ON CARGO NET ON OTHER SIDE OF LOAD, AND RATCHET TENSION.
- ⑧ TIEDOWN DEVICE, 4 REQD. SECURE HOOK ON ONE END OF DEVICE INTO A TIEDOWN RING ON SECOND LAYER CONTAINER, EXTEND DEVICE DIAGONALLY AND SECURE HOOK ON OTHER END OF DEVICE INTO TIEDOWN RING AT CORNER OF PALLET, AND RATCHET TENSION.

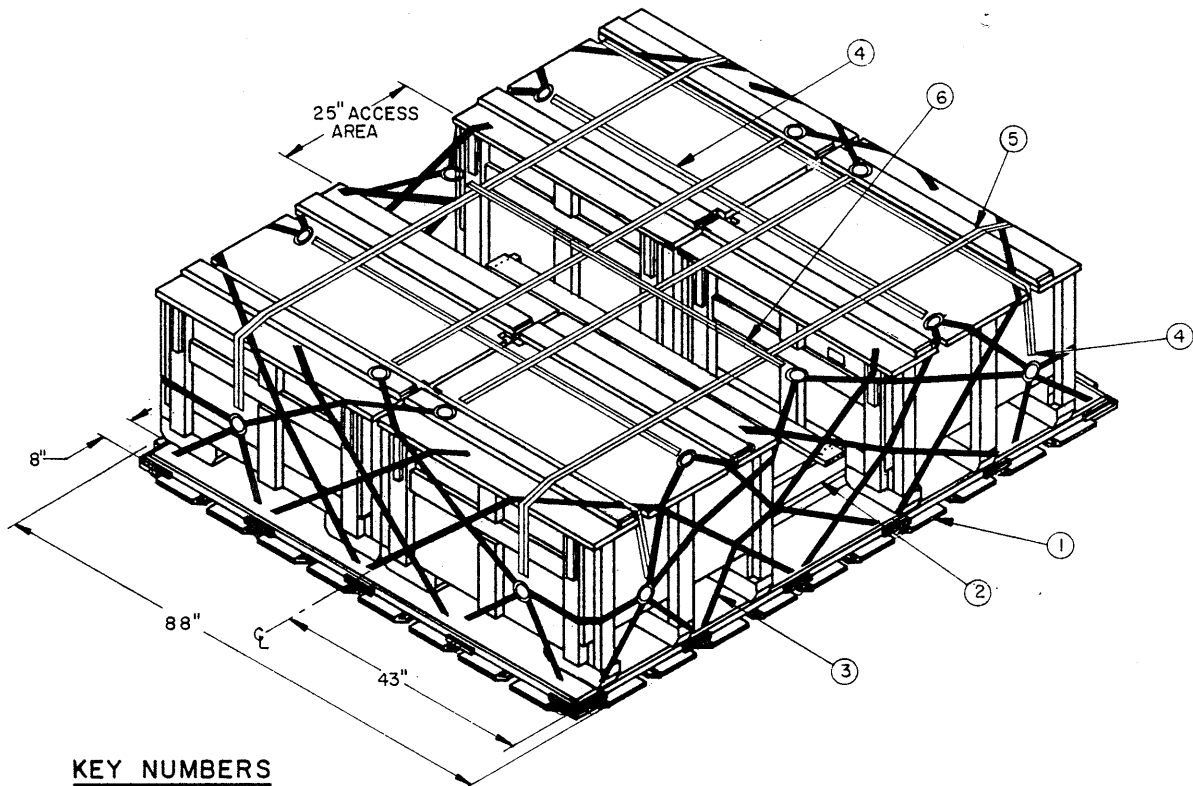
BILL OF MATERIAL (SPACER)

LUMBER	LINEAR FEET	BOARD FEET
1" X 6"	11.0	5.5
2" X 4"	19.2	12.8
NAILS	NO. REQD	POUNDS
6d (2")	24	0.15
10d (3")	20	0.31

LOAD AS SHOWN

ITEM	QUANTITY	WEIGHT (APPROX)
RELOAD KIT PACK	5	4,000 LBS
SPACER "A"	1	41 LBS
SIDE CARGO NET	2	44 LBS
TIEDOWN DEVICE	11	42 LBS
PALLET	1	300 LBS

TOTAL WEIGHT ----- 4,427 LBS



KEY NUMBERS

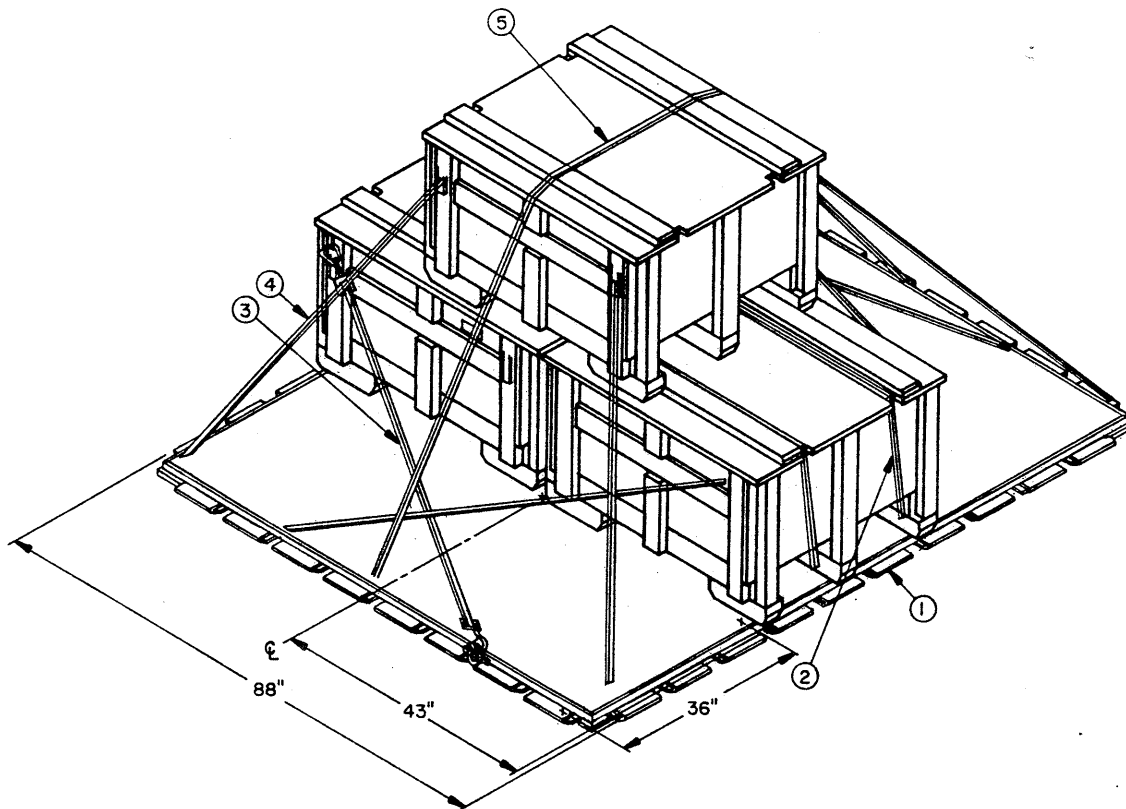
- ① PALLET, AF-463L (HCU-6/E), 1 REQD.
- ② SPACER "A", 1 REQD. FOR DETAILS, SEE PAGE 13.
- ③ SIDE CARGO NET, 2 REQD. SECURE HOOKS ON NET INTO TIEDOWN RINGS ON PALLET. SEE DETAIL ON PAGE 3 FOR SECUREMENT OF NET HOOKS, AND GENERAL NOTE "B" ON PAGE 2 FOR PLACEMENT OF NETS AND INSTALLATION OF TIEDOWN DEVICES.
- ④ TIEDOWN DEVICE, 4 REQD. SECURE HOOK ON ONE END OF DEVICE INTO RING ON CARGO NET, EXTEND DEVICE OVER CONTAINERS, AND SECURE HOOK ON OTHER END OF DEVICE INTO RING ON CARGO NET ON OTHER SIDE OF LOAD, AND RATCHET TENSION.
- ⑤ TIEDOWN DEVICE, 4 REQD. SECURE HOOK ON ONE END OF DEVICE INTO RING ON CARGO NET, EXTEND DEVICE OVER CONTAINERS, AND SECURE HOOK ON OTHER END OF DEVICE INTO RING ON CARGO NET ON OTHER SIDE OF LOAD, AND RATCHET TENSION.
- ⑥ TIEDOWN DEVICE, 1 REQD. SECURE HOOK ON ONE END OF DEVICE INTO RING ON CARGO NET, EXTEND DEVICE OVER ACCESS AREA, AND SECURE HOOK ON OTHER END OF DEVICE INTO RING ON CARGO NET ON OTHER SIDE OF LOAD, AND RATCHET TENSION.

BILL OF MATERIAL (SPACER)

LUMBER	LINEAR FEET	BOARD FEET
1" X 6"	11.0	5.5
2" X 4"	19.2	12.8
NAILS	NO. REQD	POUNDS
6d (2")	24	0.15
10d (3")	20	0.31

LOAD AS SHOWN

ITEM	QUANTITY	WEIGHT (APPROX)
RELOAD KIT PACK	4	3,200 LBS
SPACER "A"	1	41 LBS
SIDE CARGO NET	2	44 LBS
TIEDOWN DEVICE	9	34 LBS
PALLET	1	300 LBS
TOTAL WEIGHT		3,619 LBS

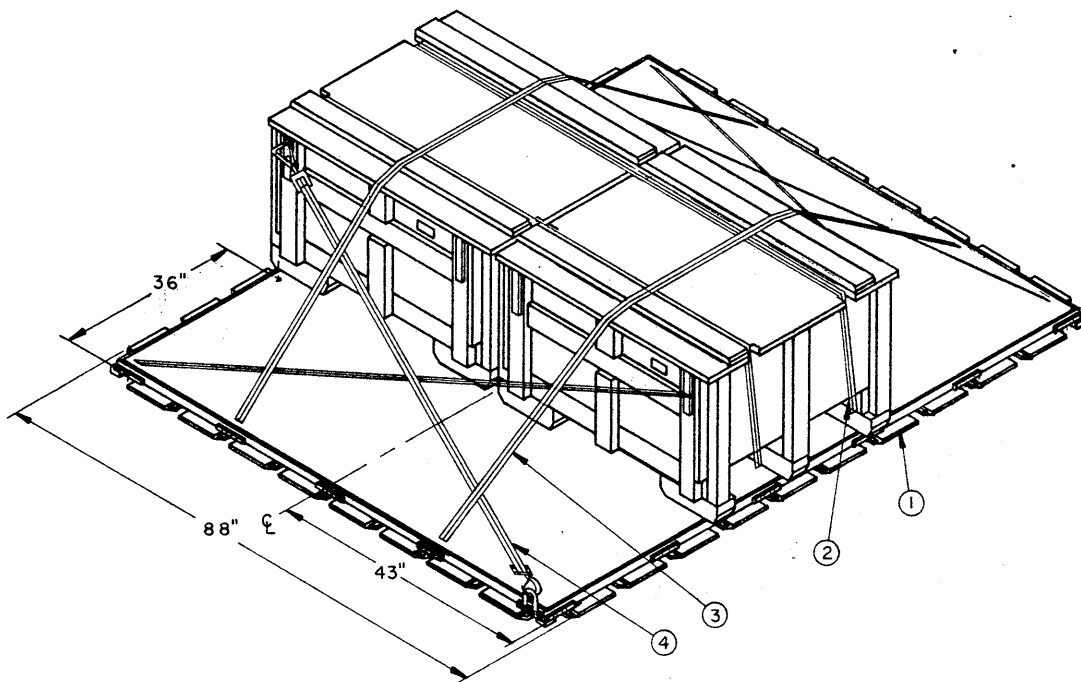


KEY NUMBERS

- ① PALLET, AF-463L (HCU-6/E), 1 REQD.
- ② TIEDOWN DEVICE, 2 REQD. SECURE HOOK ON ONE END OF DEVICE INTO TIEDOWN RING ON PALLET, EXTEND DEVICE OVER FIRST LAYER CONTAINERS AND SECURE HOOK ON OTHER END OF DEVICE INTO TIEDOWN RING ON OTHER SIDE OF PALLET, AND RATCHET TENSION. SEE GENERAL NOTE "B" ON PAGE 2 FOR INSTALLATION OF TIEDOWN DEVICES.
- ③ TIEDOWN DEVICE, 4 REQD. SECURE HOOK ON ONE END OF DEVICE INTO TIEDOWN RING ON A FIRST LAYER CONTAINER, EXTEND DEVICE DIAGONALLY AS SHOWN AND SECURE HOOK ON OTHER END OF DEVICE INTO TIEDOWN RING ON PALLET, AND RATCHET TENSION.
- ④ TIEDOWN DEVICE, 4 REQD. SECURE HOOK ON ONE END OF DEVICE INTO TIEDOWN RING ON SECOND LAYER CONTAINER, EXTEND DEVICE DIAGONALLY AS SHOWN, AND SECURE HOOK ON OTHER END OF DEVICE INTO TIEDOWN RING AT CORNER OF PALLET, AND RATCHET TENSION.
- ⑤ TIEDOWN DEVICE, 1 REQD. SECURE HOOK ON ONE END OF DEVICE INTO TIEDOWN RING ON PALLET, EXTEND DEVICE OVER SECOND LAYER CONTAINER, AND SECURE HOOK ON OTHER END OF DEVICE INTO TIEDOWN RING ON OTHER SIDE OF PALLET, AND RATCHET TENSION.

LOAD AS SHOWN

ITEM	QUANTITY	WEIGHT (APPROX)
RELOAD KIT PACK	3	2,400 LBS
TIEDOWN DEVICE	11	42 LBS
PALLET	1	300 LBS
TOTAL WEIGHT		2,742 LBS

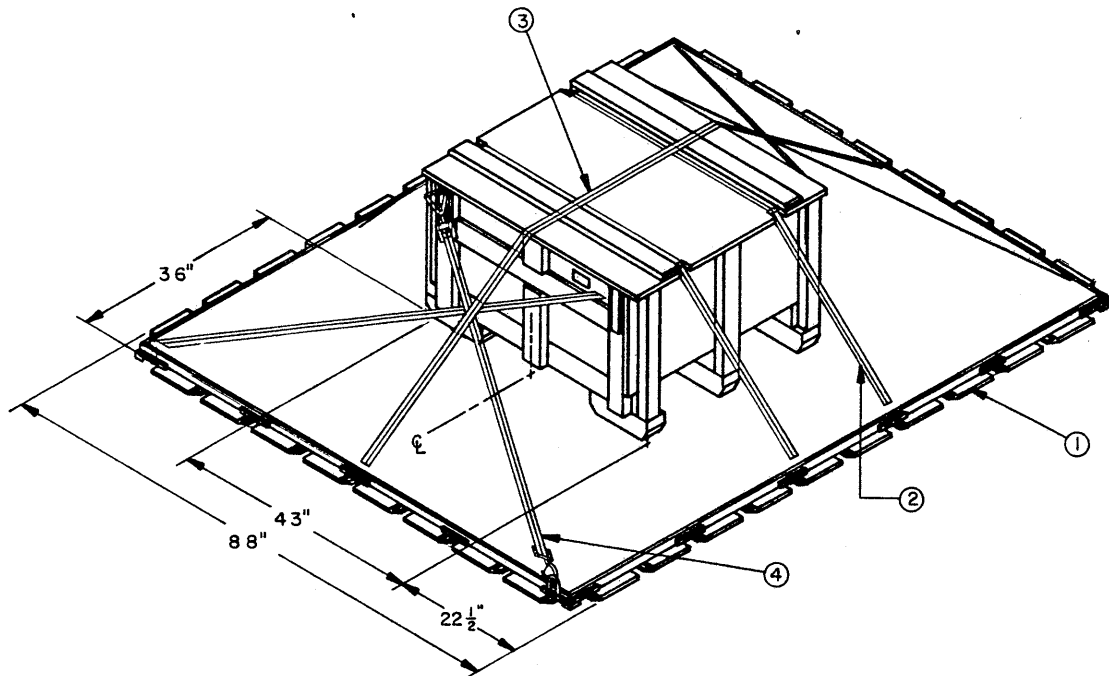


KEY NUMBERS

- ① PALLET, AF-463L (HCU-6/E), 1 REQD.
- ② TIEDOWN DEVICE, 2 REQD. SECURE HOOK ON ONE END OF DEVICE INTO TIEDOWN RING ON PALLET, EXTEND DEVICE OVER CONTAINERS AND SECURE HOOK ON OTHER END OF DEVICE INTO TIEDOWN RING ON OTHER SIDE OF PALLET, AND RATCHET TENSION. SEE GENERAL NOTE "B" ON PAGE 2 FOR INSTALLATION OF TIEDOWN DEVICES.
- ③ TIEDOWN DEVICE, 2 REQD. SECURE HOOK ON ONE END OF DEVICE INTO TIEDOWN RING ON PALLET, EXTEND DEVICE OVER CONTAINER AND SECURE HOOK ON OTHER END OF DEVICE INTO TIEDOWN RING ON OTHER SIDE OF PALLET, AND RATCHET TENSION.
- ④ TIEDOWN DEVICE, 4 REQD. SECURE HOOK ON ONE END OF DEVICE INTO A TIEDOWN RING ON CONTAINER, EXTEND DEVICE (DIAGONALLY) AND SECURE HOOK ON OTHER END OF DEVICE INTO TIEDOWN RING AT CORNER OF PALLET, AND RATCHET TENSION.

LOAD AS SHOWN

ITEM	QUANTITY	WEIGHT (APPROX)
RELOAD KIT PACK	2	1,600 LBS
TIEDOWN DEVICE	8	30 LBS
PALLET	1	300 LBS
TOTAL WEIGHT		1,930 LBS

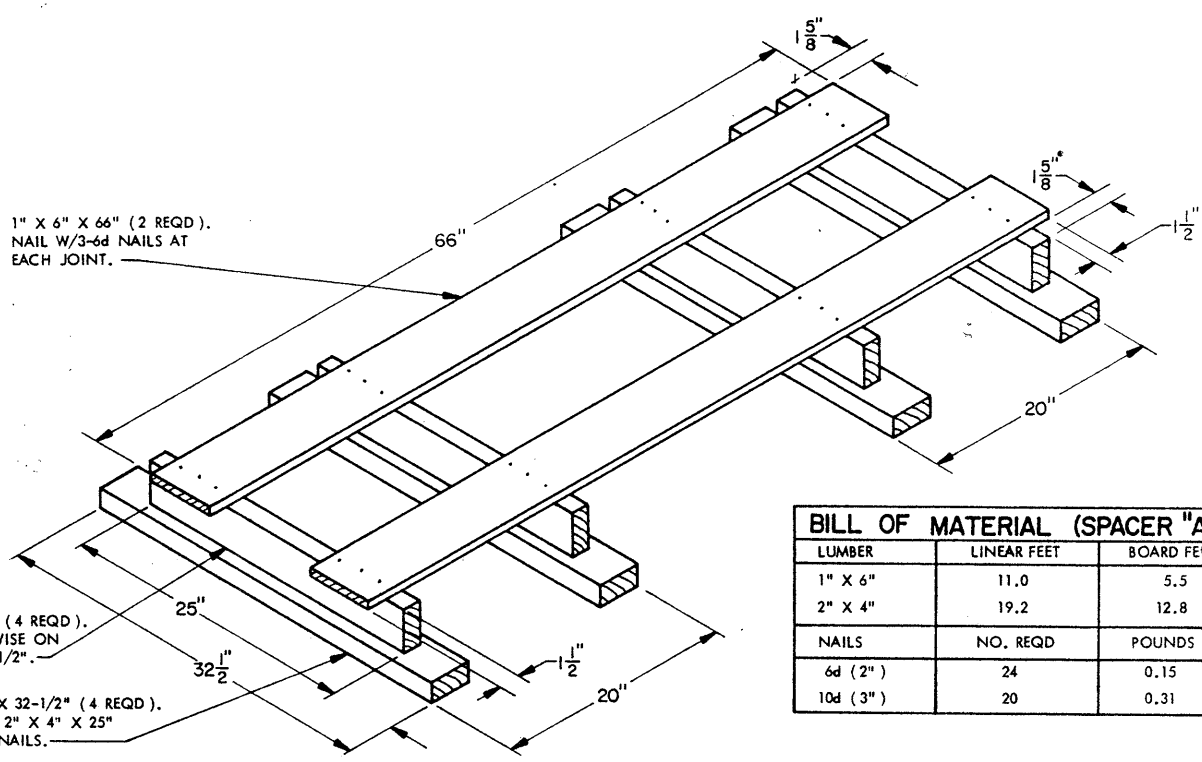


KEY NUMBERS

- ① PALLET, AF-463L (HCU-6/E), 1 REQD.
- ② TIEDOWN DEVICE, 2 REQD. SECURE HOOK ON ONE END OF DEVICE INTO TIEDOWN RING ON PALLET, EXTEND DEVICE OVER CONTAINER, AND SECURE HOOK ON OTHER END OF DEVICE INTO TIEDOWN RING ON OTHER SIDE OF PALLET, AND RATCHET TENSION. SEE GENERAL NOTE "B" ON PAGE 2 FOR INSTALLATION OF TIEDOWN DEVICES.
- ③ TIEDOWN DEVICE, 1 REQD. SECURE HOOK ON ONE END OF DEVICE INTO TIEDOWN RING ON PALLET, EXTEND DEVICE OVER CONTAINER, AND SECURE HOOK ON OTHER END OF DEVICE INTO TIEDOWN RING ON OTHER SIDE OF PALLET, AND RATCHET TENSION.
- ④ TIEDOWN DEVICE, 4 REQD. SECURE HOOK ON ONE END OF DEVICE INTO TIEDOWN RING ON CONTAINER, EXTEND DEVICE DIAGONALLY AND SECURE HOOK ON OTHER END OF DEVICE INTO TIEDOWN RING AT CORNER OF PALLET, AND RATCHET TENSION.

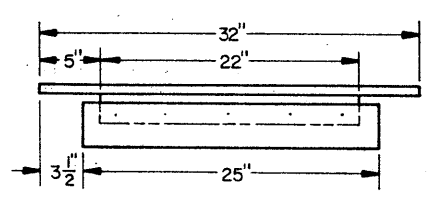
LOAD AS SHOWN

ITEM	QUANTITY	WEIGHT (APPROX)
RELOAD KIT PACK	1	800 LBS
TIEDOWN DEVICE	7	27 LBS
PALLET	1	300 LBS
TOTAL WEIGHT		1,127 LBS

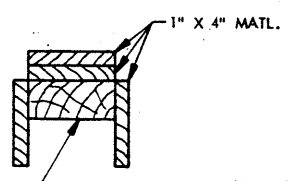


BILL OF MATERIAL (SPACER "A")		
LUMBER	LINEAR FEET	BOARD FEET
1" X 6"	11.0	5.5
2" X 4"	19.2	12.8
NAILS	NO. REQD	POUNDS
6d (2")	24	0.15
10d (3")	20	0.31

SPACER "A"

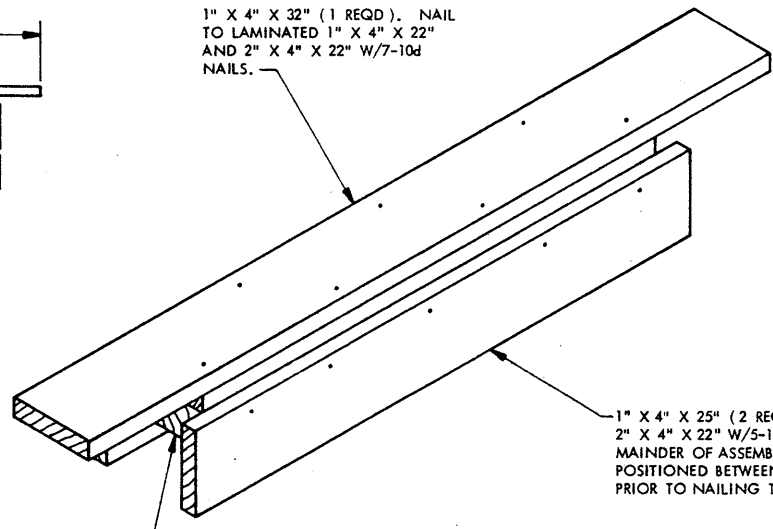


SIDE



END

1" X 4" X 32" (1 REQD). NAIL TO LAMINATED 1" X 4" X 22" AND 2" X 4" X 22" W/7-10d NAILS.

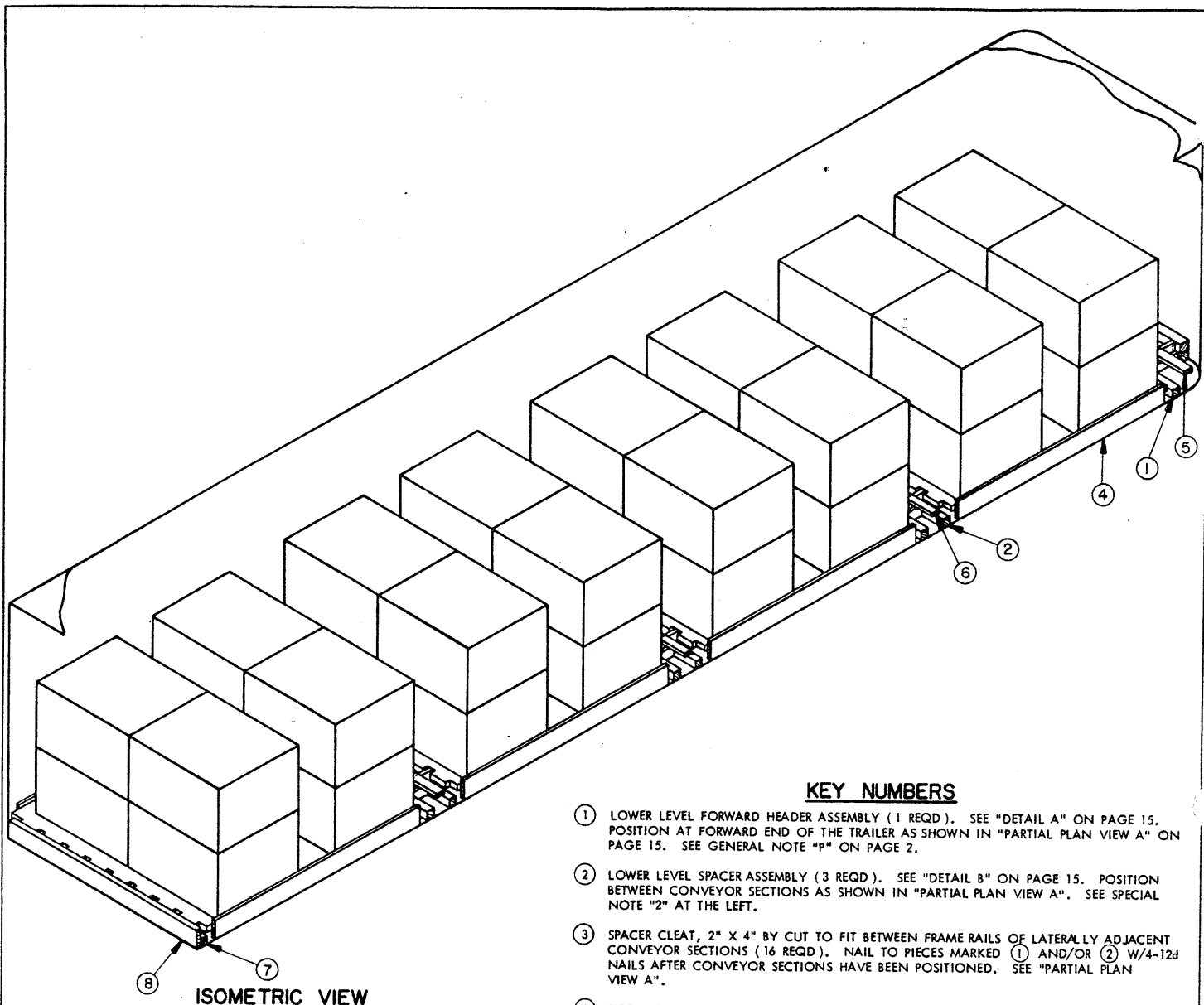


1" X 4" X 22" AND 2" X 4" X 22" (1 EACH REQD). LAMINATE 1" X 4" TO 2" X 4" W/6-6d NAILS.

SPACER "B"

BILL OF MATERIAL (SPACER "B")		
LUMBER	LINEAR FEET	BOARD FEET
1" X 4"	8.6	2.9
2" X 4"	1.84	1.3
NAILS	NO. REQD	POUNDS
6d (2")	6	0.04
10d (3")	17	0.27

DETAILS



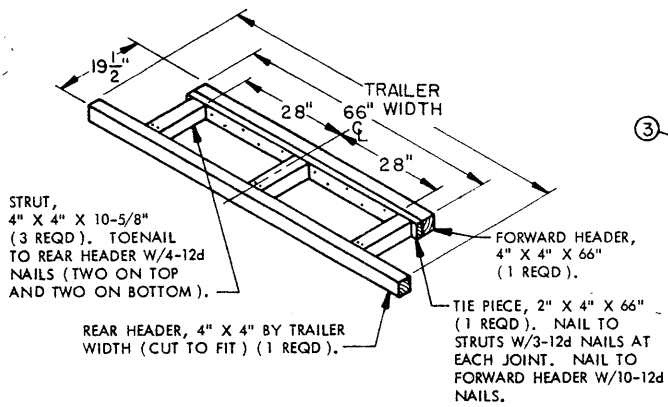
ISOMETRIC VIEW

SPECIAL NOTES:

1. A 32-UNIT LOAD (FOUR PALLETS) IS SHOWN IN A 40'-0" LONG BY 7'-6" WIDE (INSIDE WIDTH) TRAILER HAVING ROUNDED CORNERS AT THE FORWARD END. WIDER TRAILERS AND TRAILERS HAVING SQUARE-FRONTS MAY BE USED WITHOUT MAKING ANY CHANGES TO THE SPECIFIED PROCEDURES. ALSO, TRAILERS WHICH HAVE SMALL REAR CORNER POSTS MAY BE USED.
2. THE OVERALL LENGTH OF THE LOAD AS SHOWN, INCLUDING DUNNAGE ASSEMBLIES, IS 39'-6". FOR A 40'-0" LONG TRAILER HAVING SLIGHTLY LESS THAN 39'-6" INSIDE LENGTH, ADJUST THE LENGTH OF THE STRUTS ON PIECES MARKED (2) AND (6), AS NECESSARY. IF THE INSIDE LENGTH IS GREATER THAN 39'-6", LAMINATE 8" WIDE BY TRAILER WIDTH IN LENGTH MATERIAL OF THE REQUIRED THICKNESS TO PIECE MARKED (8) SO AS TO CONTACT REAR DOORS WHEN CLOSED.
3. CARGO NETS AND WEB STRAPS, AND DETAILS OF THE CONTAINERS AND PALLETS, HAVE BEEN OMITTED FROM THE LOAD VIEWS FOR CLARITY PURPOSES.
4. USE ROLLER CONVEYOR SECTIONS WITH CHANNEL FRAME RAILS, WITH ROLLERS HIGH, AND 8'-6" IN LENGTH BY 16" WIDE (APPROXIMATE). THE HEIGHT OF THE CONVEYOR FROM FLOOR OF TRAILER TO TOP OF ROLLER MUST BE SUFFICIENT TO CLEAR FIRST LEVEL DUNNAGE. EACH OF THE THREE (3) CONVEYOR SECTIONS USED AS SHOWN IN "PARTIAL PLAN VIEW A" ON PAGE 15, MUST BE OF A DESIGN WHICH WILL SUPPORT AT LEAST 10,000 POUNDS.

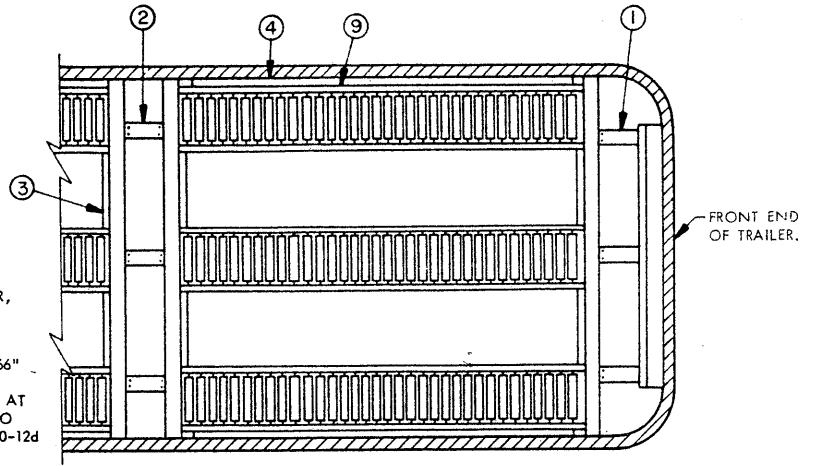
KEY NUMBERS

- (1) LOWER LEVEL FORWARD HEADER ASSEMBLY (1 REQD). SEE "DETAIL A" ON PAGE 15. POSITION AT FORWARD END OF THE TRAILER AS SHOWN IN "PARTIAL PLAN VIEW A" ON PAGE 15. SEE GENERAL NOTE "P" ON PAGE 2.
- (2) LOWER LEVEL SPACER ASSEMBLY (3 REQD). SEE "DETAIL B" ON PAGE 15. POSITION BETWEEN CONVEYOR SECTIONS AS SHOWN IN "PARTIAL PLAN VIEW A". SEE SPECIAL NOTE "2" AT THE LEFT.
- (3) SPACER CLEAT, 2" X 4" BY CUT TO FIT BETWEEN FRAME RAILS OF LATERALLY ADJACENT CONVEYOR SECTIONS (16 REQD). NAIL TO PIECES MARKED (1) AND/OR (2) W/4-12d NAILS AFTER CONVEYOR SECTIONS HAVE BEEN POSITIONED. SEE "PARTIAL PLAN VIEW A".
- (4) SIDE BLOCKING, 1" X 8" X 8'-0" (8 REQD). NOTE: FOR TRAILERS 7'-8" OR GREATER IN WIDTH, USE 2" X 8" MATERIAL.
- (5) UPPER LEVEL FORWARD HEADER ASSEMBLY (1 REQD). SEE "DETAIL C" ON PAGE 15. POSITION ON TOP OF PIECE MARKED (1) AS SHOWN IN "PARTIAL PLAN VIEW B" ON PAGE 15.
- (6) UPPER LEVEL SPACER ASSEMBLY (3 REQD). SEE "DETAIL D" ON PAGE 15. POSITION ON TOP OF PIECE MARKED (2) AS SHOWN IN "PARTIAL PLAN VIEW B".
- (7) REAR HEADER, 4" X 4" BY TRAILER WIDTH (CUT TO FIT) (1 REQD).
- (8) REAR BLOCKING, 2" X 8" BY TRAILER WIDTH (CUT TO FIT) (1 REQD). NAIL TO PIECE MARKED (7) W/1-12d NAIL EVERY 12". SEE SPECIAL NOTE "2" AT THE LEFT.
- (9) ROLLER CONVEYOR SECTION (12 REQD). SEE SPECIAL NOTE "4" AT THE LEFT.



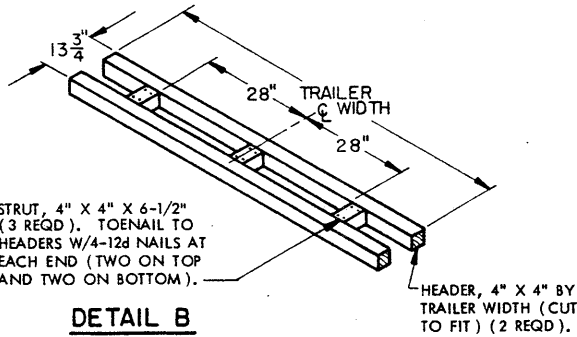
DETAIL A

LOWER LEVEL FORWARD HEADER ASSEMBLY, PIECE MARKED ①.



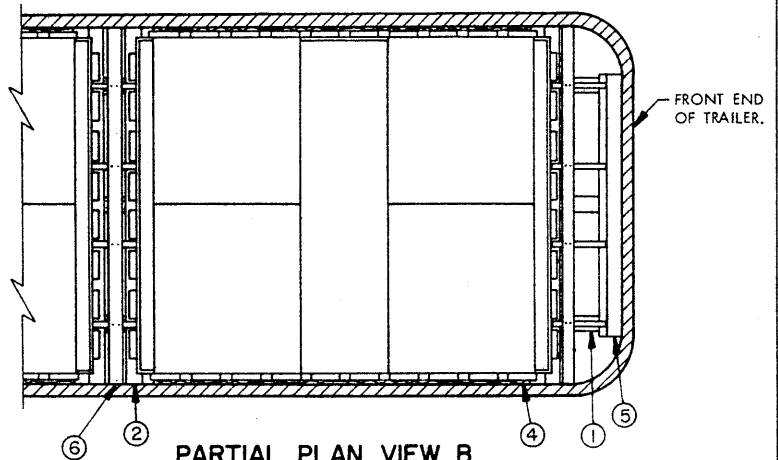
PARTIAL PLAN VIEW A

THIS VIEW SHOWS THE LOWER LEVEL DUNNAGE ASSEMBLIES AND THE CONVEYOR SECTIONS IN POSITION.



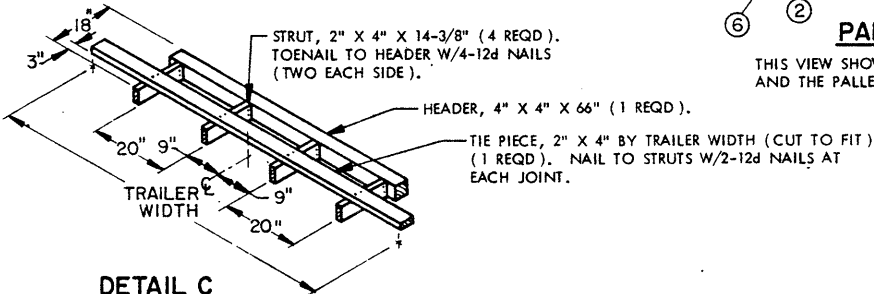
DETAIL B

LOWER LEVEL SPACER ASSEMBLY, PIECE MARKED ②.



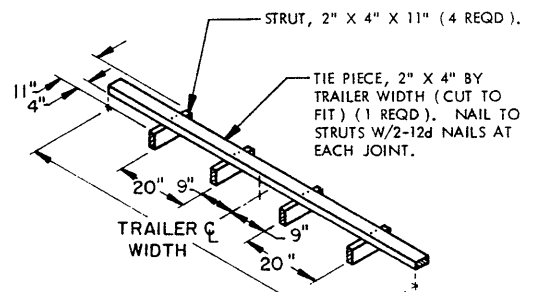
PARTIAL PLAN VIEW B

THIS VIEW SHOWS THE UPPER LEVEL DUNNAGE ASSEMBLIES AND THE PALLETS IN POSITION.



DETAIL C

UPPER LEVEL FORWARD HEADER ASSEMBLY, PIECE MARKED ③.



DETAIL D

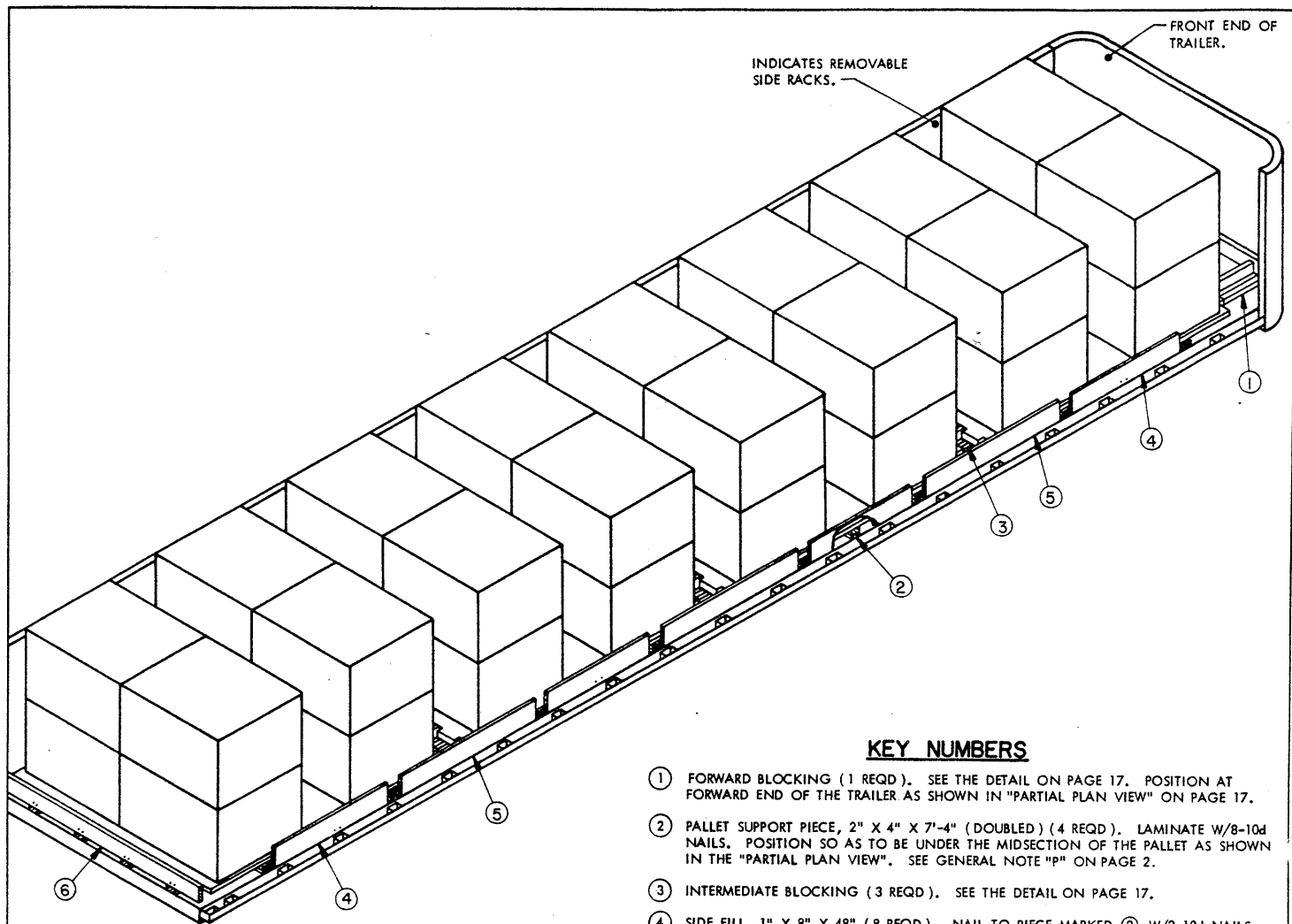
UPPER LEVEL SPACER ASSEMBLY, PIECE MARKED ④.

BILL OF MATERIAL		
LUMBER	LINEAR FEET	BOARD FEET
1" X 8"	64	43
2" X 4"	80	54
2" X 8"	8	11
4" X 4"	79	106
NAILS	NO. REQD	POUNDS
12d (3-1/4")	223	3-3/4
CONVEYOR, GRAVITY TYPE ----- 12 REQD --- 2,136 LBS (APPROX)		

LOAD AS SHOWN

ITEM	QUANTITY	WEIGHT (APPROX)
PALLET		
W/CDU ITEM -----	4	27,416 LBS *
DUNNAGE -----		2,675 LBS
TOTAL WEIGHT -----		30,091 LBS

* WEIGHT IS BASED ON EIGHT (8) CDU CONTAINERS PER PALLET, ALTERNATIVE METHOD.



ISOMETRIC VIEW

SPECIAL NOTES:

1. A 32-UNIT LOAD (FOUR PALLETS) IS SHOWN IN A 40'-0" LONG BY 7'-6" WIDE (INSIDE WIDTH) OPEN TOP TRAILER HAVING REMOVABLE SIDE RACKS.

2. LOADING STEPS:

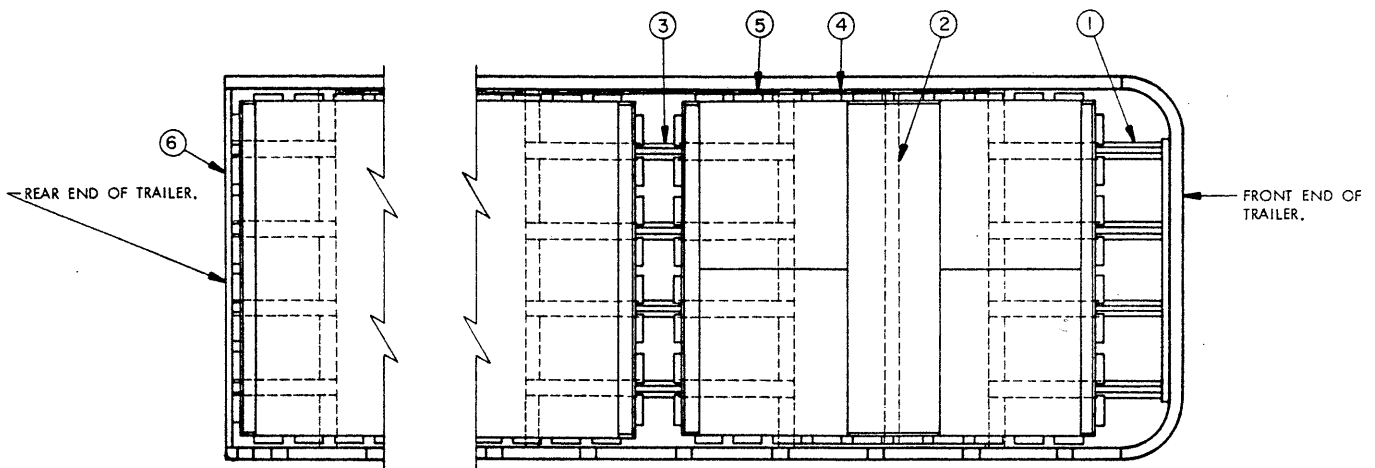
- A. REMOVE SIDE RACKS FROM LOADING SIDE ONLY.
- B. POSITION PIECE MARKED ① AT FORWARD END OF TRAILER.
- C. PLACE PIECE MARKED ③ IN APPROXIMATE LOCATION.
- D. PLACE PIECE MARKED ②, WITH A PIECE MARKED ④ NAILED TO IT AT THE FAR END, SO AS TO BE UNDER THE MIDSECTION OF A PALLET.
- E. WITH APPROPRIATELY SIZED MATERIALS HANDLING EQUIPMENT, PLACE A PALLET GENTLY ONTO PIECES MARKED ①, ② AND ③, MAKING SURE THAT THE PALLET IS CENTERED IN THE WIDTH OF THE TRAILER AND THAT THE STRUTS ON PIECES MARKED ① AND ③ FIT PROPERLY AND SNUGLY INTO THE NOTCHES ON A PALLET, AS SHOWN.
- F. POSITION A PIECE MARKED ⑤ ON EDGE AGAINST THE FAR SIDE OF THE TRAILER.
- G. LOAD THE REMAINING PALLETS SIMILAR TO STEPS "C" THRU "F" EXCEPT THAT EACH END OF THE SECOND AND THIRD PALLETS WILL BE ALIGNED WITH THE STRUTS ON PIECES MARKED ③; THE LAST PALLET WILL BE ALIGNED WITH THE STRUTS ON A PIECE MARKED ③ AT ONE END, AND THE REAR BLOCKING MARKED ⑥ WILL BE POSITIONED AGAINST THE OPPOSITE END OF THE PALLET.
- H. POSITION REMAINING PIECES MARKED ④ AND ⑤ ON LOADING SIDE, NAILING PIECE MARKED ④ AS SPECIFIED.
- J. REPLACE SIDE RACKS, AND COVER TRAILER TOP WITH A FIRE RESISTANT TREATED TARPULIN. SECURE TARPULIN TO PREVENT LOSS DURING SHIPMENT, AND TO PROVIDE LOAD PROTECTION.

KEY NUMBERS

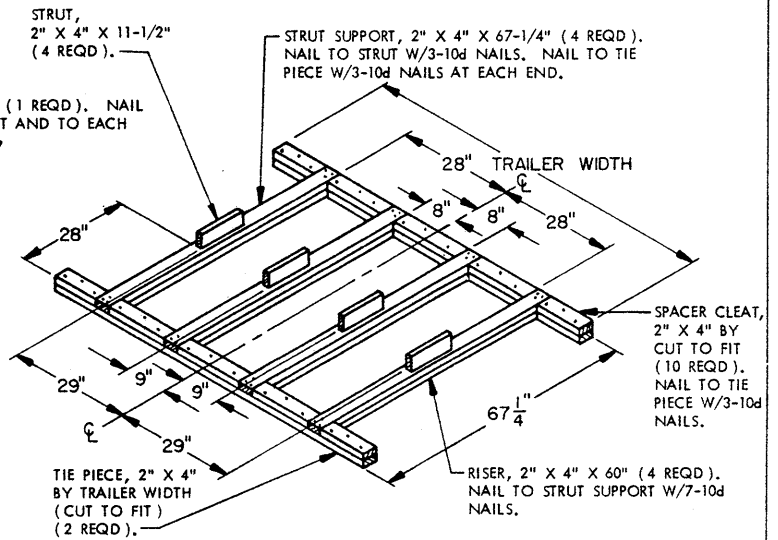
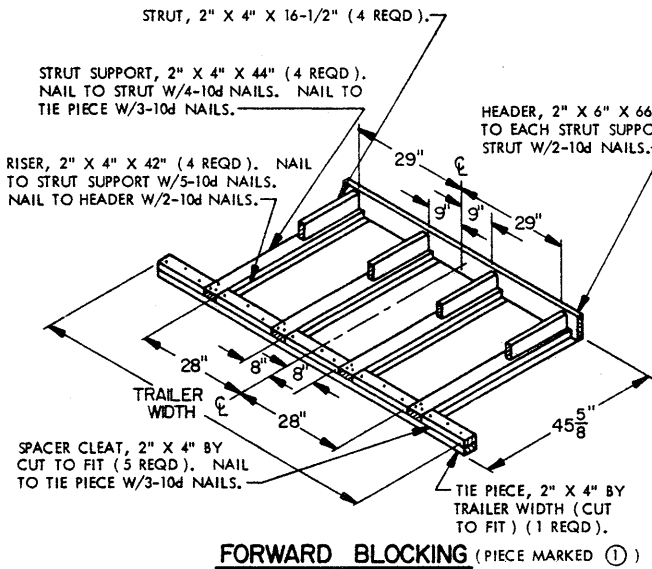
- ① FORWARD BLOCKING (1 REQD). SEE THE DETAIL ON PAGE 17. POSITION AT FORWARD END OF THE TRAILER AS SHOWN IN "PARTIAL PLAN VIEW" ON PAGE 17.
- ② PALLET SUPPORT PIECE, 2" X 4" X 7'-4" (DOUBLED) (4 REQD). LAMINATE W/8-10d NAILS. POSITION SO AS TO BE UNDER THE MIDSECTION OF THE PALLET AS SHOWN IN THE "PARTIAL PLAN VIEW". SEE GENERAL NOTE "P" ON PAGE 2.
- ③ INTERMEDIATE BLOCKING (3 REQD). SEE THE DETAIL ON PAGE 17.
- ④ SIDE FILL, 1" X 8" X 48" (8 REQD). NAIL TO PIECE MARKED ② W/2-10d NAILS.
- ⑤ SIDE FILL, 1" X 8" X 59" (6 REQD). POSITION AS SHOWN.
- ⑥ REAR BLOCKING (1 REQD). SEE THE DETAIL ON PAGE 17. SEE SPECIAL NOTE "3".

(SPECIAL NOTES CONTINUED)

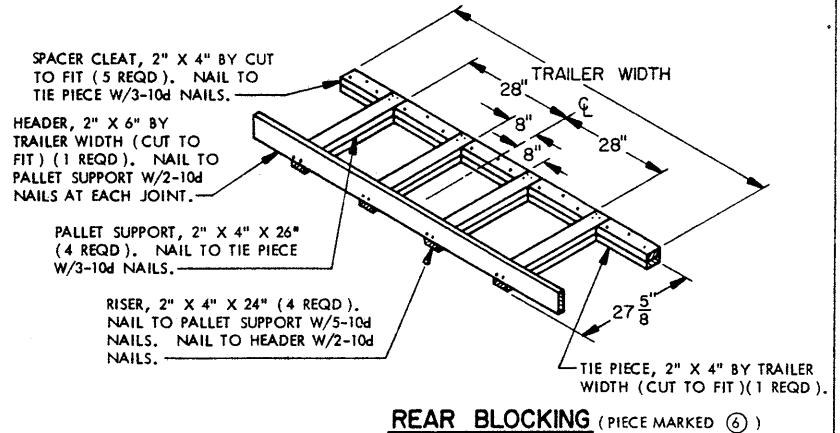
3. THE OVERALL LENGTH OF THE LOAD AS SHOWN, INCLUDING DUNNAGE ASSEMBLIES, IS 39'-6". FOR A 40'-0" LONG TRAILER HAVING SLIGHTLY LESS THAN 39'-6" INSIDE LENGTH, ADJUST THE LENGTH OF THE STRUTS ON PIECES MARKED ③ AS NECESSARY. IF THE LENGTH IS GREATER THAN 39'-6", LAMINATE 6" WIDE BY TRAILER WIDTH IN LENGTH MATERIAL OF THE REQUIRED THICKNESS TO THE REAR BLOCKING.
4. CARGO NETS AND WEB STRAPS, AND DETAILS OF THE CONTAINERS AND PALLETS, HAVE BEEN OMITTED FROM THE LOAD VIEWS FOR CLARITY PURPOSES.
5. REFER TO PAGE 20 FOR THE BLOCKING OF A PARTIAL LOAD.



PARTIAL PLAN VIEW



BILL OF MATERIAL		
LUMBER	LINEAR FEET	BOARD FEET
1" X 8"	62	42
2" X 4"	359	240
2" X 6"	13	13
NAILS	NO. REQD	POUNDS
10d (3")	480	7-1/2

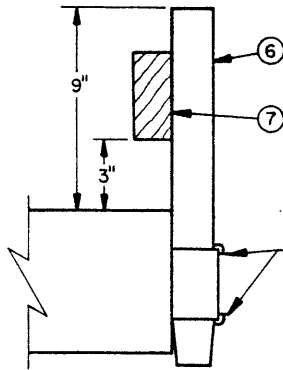


LOAD AS SHOWN

ITEM	QUANTITY	WEIGHT (APPROX)
PALLET W/CDU ITEM	4	27,416 LBS *
DUNNAGE		746 LBS
TOTAL WEIGHT		28,162 LBS

* WEIGHT IS BASED ON EIGHT (8) CDU CONTAINERS PER PALLET, ALTERNATIVE METHOD.

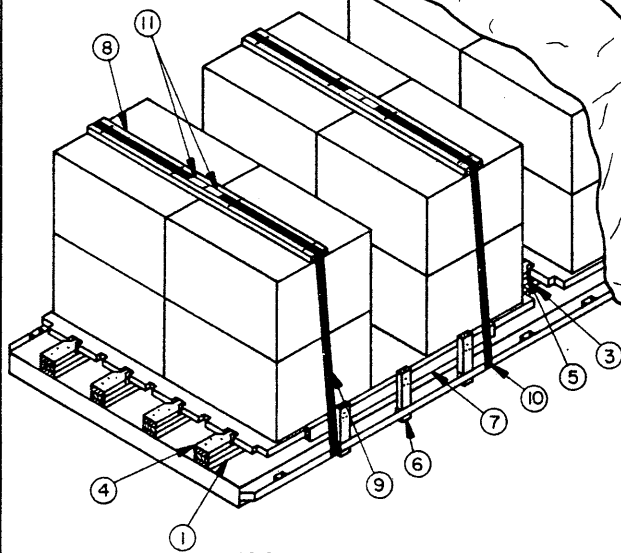
32-UNIT LOAD (FOUR PALLETS) IN AN OPEN TOP TRAILER HAVING REMOVABLE SIDES



SECUREMENT OF STUB STAKE

INDICATES CANVAS COVER OVER THE LOAD.
SEE SPECIAL NOTE 6 BELOW.

THE CANVAS COVER IS SHOWN FOLDED FORWARD JUST TO DEPICT THE LOAD BLOCKING REQUIREMENTS. NOTE THAT THE FORWARD THREE PALLET UNITS ARE SECURED IN THE SAME MANNER AS THE EXPOSED UNIT.



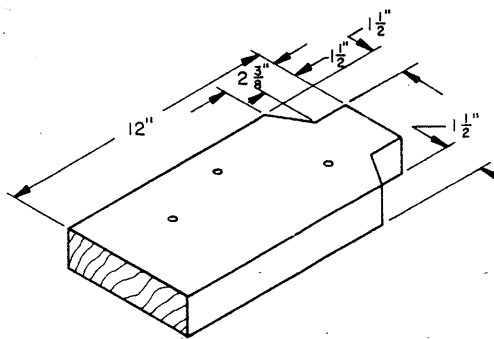
ISOMETRIC VIEW

KEY NUMBERS

- ① END BACK-UP CLEAT, 2" X 6" X 30" (DOUBLED) (8 REQD). PRE-POSITION AS SHOWN IN THE "PARTIAL PLAN VIEW C" ON PAGE 19. NAIL FIRST PIECE TO THE TRAILER FLOOR W/5-12d NAILS. NAIL SECOND PIECE TO THE FIRST IN A LIKE MANNER. SEE SPECIAL NOTE 2 AT THE LEFT AND GENERAL NOTE "B" ON PAGE 2.
- ② PALLET SUPPORT PIECE, 2" X 6" X 7'-4" (DOUBLED) (12 REQD). PRE-POSITION AS SHOWN IN THE "PARTIAL PLAN VIEW C" ON PAGE 19. NAIL FIRST PIECE TO THE TRAILER FLOOR W/7-12d NAILS. NAIL SECOND PIECE TO THE FIRST IN A LIKE MANNER.
- ③ INTERMEDIATE BACK-UP CLEAT, 2" X 6" X 48" (DOUBLED) (12 REQD). PRE-POSITION AS SHOWN IN THE "PARTIAL PLAN VIEW C" ON PAGE 19. NAIL FIRST PIECE TO THE TRAILER FLOOR W/5-12d NAILS. NAIL SECOND PIECE TO THE FIRST IN A LIKE MANNER.
- ④ END BLOCK (8 REQD). SEE THE DETAIL AND THE "PARTIAL PLAN VIEW D" ON PAGE 19. NAIL TO PIECE MARKED ① W/3-30d NAILS. SEE SPECIAL NOTE 2.
- ⑤ INTERMEDIATE BLOCK (12 REQD). SEE THE DETAIL AND THE "PARTIAL PLAN VIEW D" ON PAGE 19. NAIL TO PIECE MARKED ③ W/3-30d NAILS.
- ⑥ STUB STAKE, 2" X 4" X 15" (24 REQD). (THREE STUB STAKES REQUIRED ON EACH SIDE OF PALLET). NAIL TO PIECE MARKED ⑦ W/3-10d NAILS. SEE THE "SECUREMENT OF STUB STAKE" DETAIL ABOVE.
- ⑦ SIDE BLOCKING, 2" X 4" X 72" (8 REQD). SEE THE "SECUREMENT OF STUB STAKE" DETAIL ABOVE FOR THE INSTALLATION DIMENSION WHICH WILL ALIGN THE BLOCKING WITH THE EDGE OF THE PALLET.
- ⑧ STRAPPING BOARD, 2" X 6" X 7'-2" (8 REQD). POSITION ACROSS THE CENTER OF CDU ITEM CONTAINERS AS SHOWN.
- ⑨ STEEL STRAPPING, 2" X .050" X 26'-0" (8 REQD). INSTALL EACH STRAP FROM TWO (2) 13'-0" LONG PIECES. STAPLE TO PIECE MARKED ⑧ W/4 STAPLES. SEE GENERAL NOTE "M" ON PAGE 2, AND SPECIAL NOTE 5 AT THE LEFT.
- ⑩ PAD, 2" X .050" STRAP 18" LONG (16 REQD). POSITION UNDER AND SEAL TO PIECE MARKED ⑨. SEE "DETAIL A" ON PAGE 19. ALT: STAKE POCKET PROTECTOR (32 REQD). USE TWO (2) UNDER EACH TIE-DOWN FACILITY WITH PIECE MARKED ⑨. SEE "DETAIL B" ON PAGE 19.
- ⑪ SEAL FOR 2" STRAPPING (48 REQD). SEE GENERAL NOTE "L" ON PAGE 2.

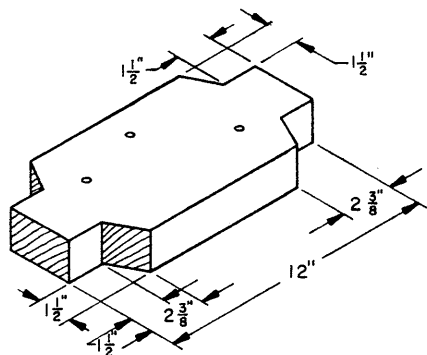
SPECIAL NOTES:

1. A 32-UNIT LOAD (FOUR PALLET) IS SHOWN ON A 40'-0" LONG BY 8'-0" WIDE FLAT BED TRAILER.
2. THE OVERALL LENGTH OF THE LOAD AS SHOWN, INCLUDING DUNNAGE, IS 40'-0". IF THE LOADING AREA OF THE TRAILER IS SLIGHTLY LESS THAN 40'-0", THE PIECES MARKED ① AND ④ AT EACH END OF THE TRAILER MAY BE ALLOWED TO EXTEND A SMALL AMOUNT BEYOND THE END OF THE TRAILER BED, BUT NOT BEYOND THE TRAILER LENGTH.
3. CARGO NETS AND WEB STRAPS, AND DETAILS OF THE CONTAINERS AND PALLET, HAVE BEEN OMITTED FROM THE LOAD VIEWS FOR CLARITY PURPOSES.
4. FOR LESS THAN A FULL LOAD, PIECES MARKED ① AND ④ SHOULD BE APPLIED AT EACH END OF THE LOAD; ADJUST QUANTITIES OF PIECES MARKED ②, ③ AND ⑤, AS NECESSARY.
5. IF DESIRED, EACH TIE DOWN STRAP SPECIFIED AS PIECE MARKED ⑨ MAY BE INSTALLED FROM ONE 25'-0" PIECE OF STRAPPING. ATTACH ONE END OF THE STRAP TO A TIE-DOWN FACILITY ON ONE SIDE OF THE TRAILER AS SHOWN WITHIN "DETAIL A" ON PAGE 19, RUN THE STRAPPING OVER THE LOAD, PASS IT DOWN THROUGH AND AROUND A TIE-DOWN FACILITY ON THE OPPOSITE SIDE OF THE TRAILER, AND LAP IT BACK ON ITSELF ALONG SIDE OF THE LOAD WHERE IT CAN BE TENSIONED AND SEALED. WITH THIS ARRANGEMENT, TWO SEALS PER STRAP LESS THAN SHOWN WILL BE REQUIRED.
6. THE LOAD MUST BE COVERED WITH A FIRE RESISTANT TREATED TARPULIN. THIS TARPULIN WILL BE SECURED TO PROVIDE LOAD PROTECTION AND TO PREVENT LOSS DURING SHIPMENT.



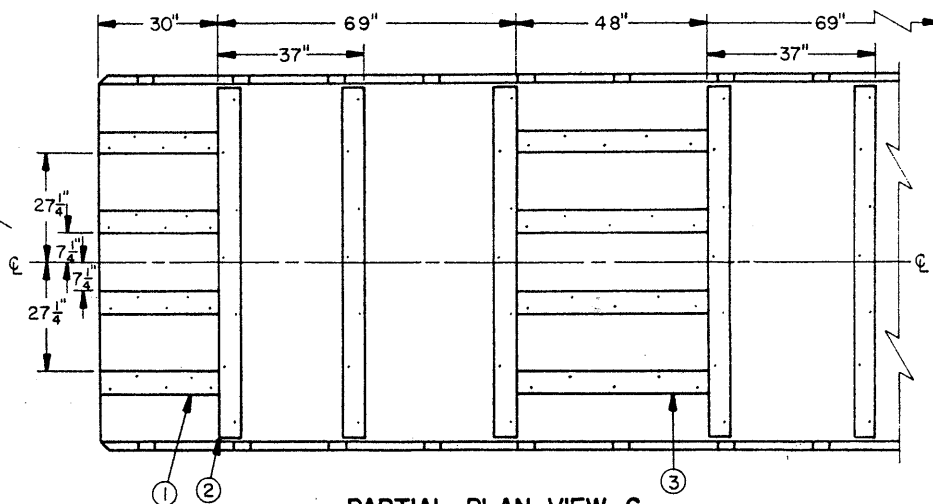
END BLOCK

2" X 6" MATERIAL. PRE-DRILL THREE (3) HOLES USING 3/16" DRILL TO PREVENT THE NAILS FROM SPLITTING THE BLOCK DURING INSTALLATION.



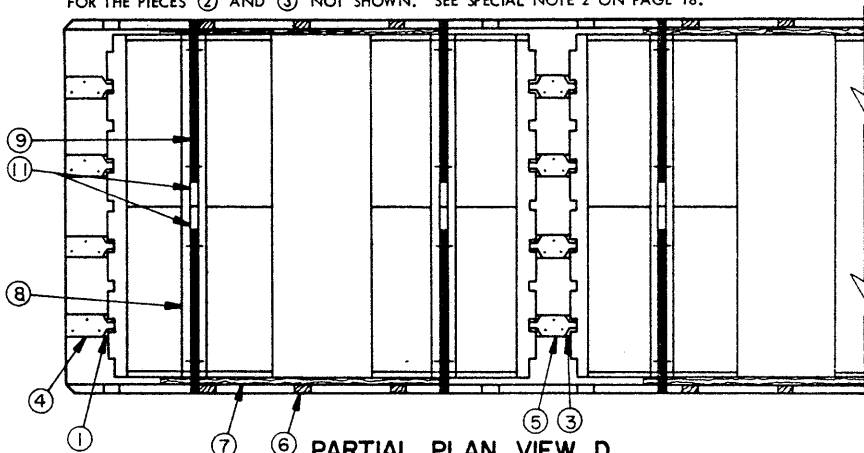
INTERMEDIATE BLOCK

2" X 6" MATERIAL. PRE-DRILL THREE (3) HOLES USING A 3/16" DRILL TO PREVENT THE NAILS FROM SPLITTING THE BLOCK DURING INSTALLATION.



PARTIAL PLAN VIEW C

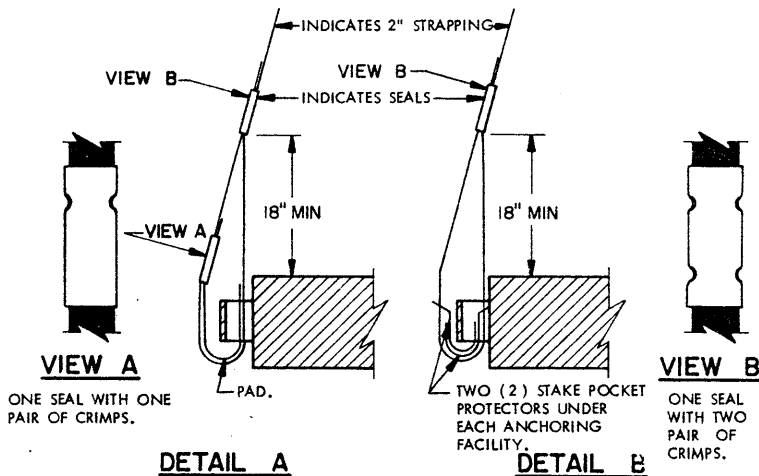
THIS VIEW SHOWS THE LOCATION OF THE PRE-POSITIONED DUNNAGE. REPEAT THE DIMENSIONS FOR THE PIECES ② AND ③ NOT SHOWN. SEE SPECIAL NOTE 2 ON PAGE 18.



PARTIAL PLAN VIEW D

THIS VIEW SHOWS THE PALLETS POSITIONED ON THE TRAILER AND THE BLOCKING APPLIED.

BILL OF MATERIAL		
LUMBER	LINEAR FEET	BOARD FEET
2" X 4"	78	52
2" X 6"	390	390
NAILS	NO. REQD	POUNDS
10d (3")	72	1-1/4
12d (3-1/4")	416	7
30d (4-1/2")	60	3
STEEL STRAPPING, 2" X .050"	232' REQD	78 LBS
SEAL FOR 2" STRAPPING	48 REQD	10 LBS
STAPLE FOR 2" STRAPPING	32 REQD	NIL



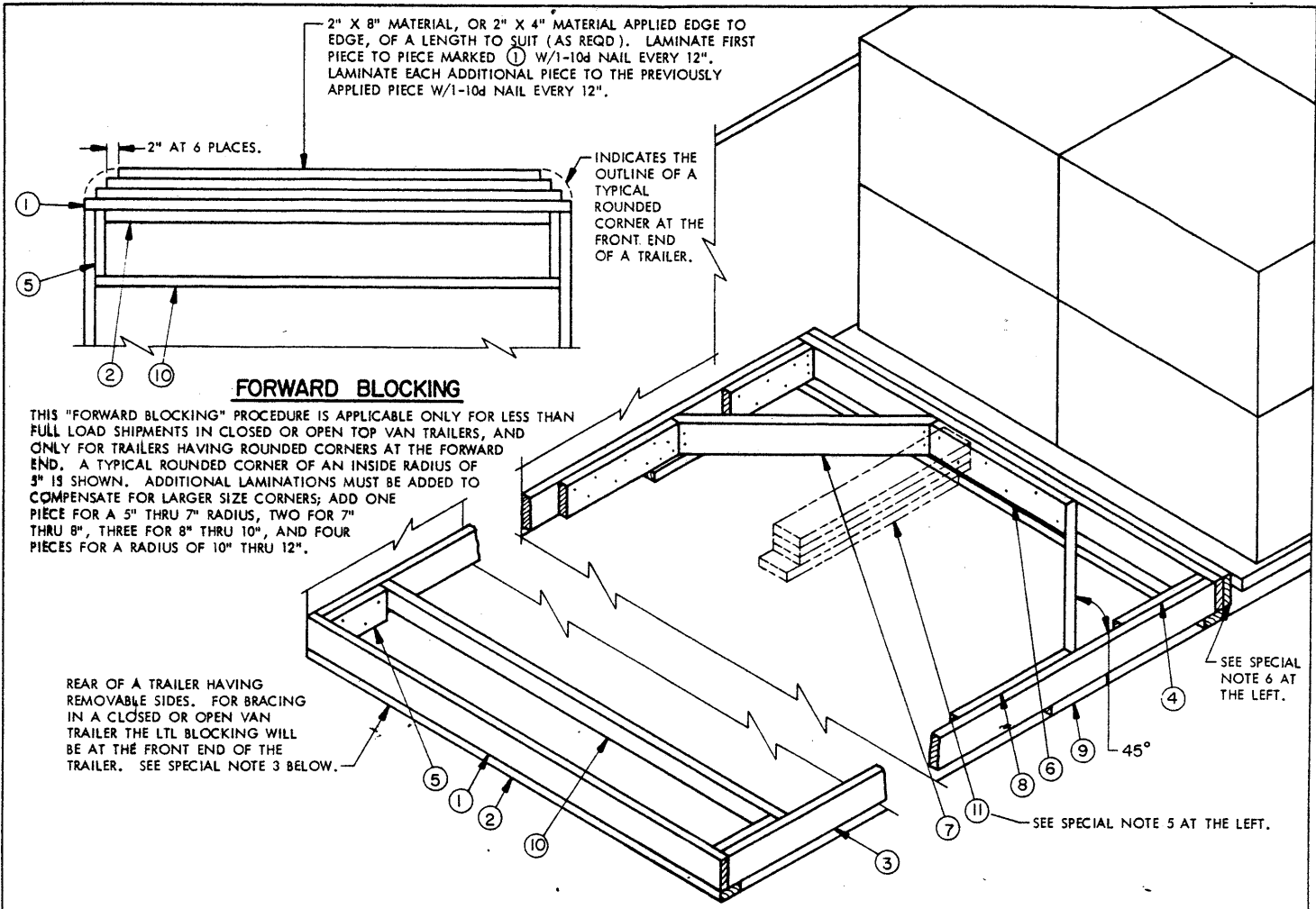
DETAIL A
METHOD OF INSTALLING 2" STRAPPING AND PAD AT ANCHORING FACILITY.

DETAIL B
METHOD OF INSTALLING 2" STRAPPING AND STAKE POCKET PROTECTORS (ALT PAD).

LOAD AS SHOWN

ITEM	QUANTITY	WEIGHT (APPROX)
PALLET		
W/CDU ITEM	4	27,416 LBS *
DUNNAGE		1,205 LBS
TOTAL WEIGHT		28,621 LBS

*WEIGHT IS BASED ON EIGHT (8) CDU CONTAINERS PER PALLET, ALTERNATIVE METHOD.



ISOMETRIC VIEW

SPECIAL NOTES

1. THESE LTL UNLOADING PROCEDURES DEPICT THE USE OF BOTH "K-BRACE" BLOCKING AND "NAILED-FLOOR-LINE" BLOCKING, FOR THE BRACING OF A PARTIAL LOAD SHIPMENT.
2. THE PROCEDURES DEPICTED WITHIN THE "ISOMETRIC VIEW" ARE APPLICABLE FOR THE BRACING OF A PARTIAL LOAD SHIPMENT IN AN OPEN TOP TRAILER HAVING REMOVABLE SIDES. THE BRACING IS SHOWN AT THE REAR OF THE LOAD; HOWEVER, THE BRACING MAY BE INSTALLED AT THE FORWARD END IN LIEU OF AT THE REAR, IF DESIRED. ADJUST THE QUANTITIES OF PIECES MARKED ② AND ③ SPECIFIED ON PAGE 16, AS NECESSARY, WHEN LOADING A LESS-THAN-FULL-LOAD QUANTITY OF PALLETS.
3. FOR THE BRACING OF A PARTIAL LOAD SHIPMENT IN A CLOSED OR OPEN TOP VAN TRAILER, THE BRACING SHOWN MUST BE APPLIED AT THE FORWARD END OF THE LOAD SO THAT THE INSTALLED ROLLER CONVEYORS MAY BE USED FOR THE LOADING AND UNLOADING OF THE PALLETS THROUGH THE REAR DOORS. OMIT PIECES MARKED ① AND ⑤, AND ADJUST THE QUANTITIES OF PIECES MARKED ②, ③, ④, ⑥, AND ⑦ SPECIFIED ON PAGE 14, AS NECESSARY. ONE (1) ADDITIONAL PIECE OF EACH PIECE MARKED ⑦ AND ⑧ IS REQUIRED BETWEEN THE FRONT END OF THE LOAD AND THE INSTALLED "K-BRACE" OR "NAILED-FLOOR-LINE" BLOCKING. NOTE: IF USED, THE LENGTH OF THE SIDE STRUTS, PIECES MARKED ③ IN THE ABOVE PROCEDURE, MUST BE OF SUCH A LENGTH THAT THE REAR BLOCKING PIECE MARKED ⑧ ON PAGE 14 WILL CONTACT THE CLOSED DOORS OF THE TRAILER. THE BLOCKING AS SHOWN IS APPLICABLE FOR A TRAILER HAVING A SQUARE FRONT. IF THE TRAILER HAS ROUNDED CORNERS AT THE FORWARD END, SEE THE "FORWARD BLOCKING" DETAIL ABOVE FOR ADDITIONAL DUNNAGE REQUIREMENTS.
4. THE "K-BRACE" BLOCKING, SHOWN AS PIECES MARKED ① THRU ⑩, IS ADEQUATE FOR RETAINING THREE (3) PALLET UNITS OF RELOAD KIT PACKS.
5. BACK-UP CLEATS, PIECES MARKED ⑪, ARE FOR USE IN A TRAILER WHICH HAS A NAILABLE FLOOR AND SHOULD BE USED, IF POSSIBLE, IN LIEU OF PIECES MARKED ③ THRU ⑩ AND REAR PIECES MARKED ① AND ②. FOUR (4) BACK-UP CLEATS ARE ADEQUATE FOR RETAINING TWO (2) PALLETS WITH RELOAD KITS. FOR CLARITY, ONLY ONE (1) PIECE MARKED ⑪ IS SHOWN; HOWEVER, FOUR (4) EVENLY SPACED BACK-UP CLEATS ARE REQUIRED TO RETAIN A 2-PALLET LOAD. TWO (2) CLEATS WILL RETAIN ONE (1) PALLET UNIT.
6. THE PIECE SHOWN IMMEDIATELY TO THE REAR OF THE DEPICTED PALLET REPRESENTS PIECE MARKED ⑧ ON PAGE 14 OR PIECE MARKED ⑥ ON PAGE 16, DEPENDING ON THE TYPE OF TRAILER BEING USED.

KEY NUMBERS

- ① HEADER, 2" X 6" BY TRAILER WIDTH (CUT TO FIT) (2 REQD). SEE SPECIAL NOTE 3 IF A CLOSED OR OPEN TOP VAN TRAILER IS BEING LOADED.
- ② HEADER SUPPORT, 2" X 4" BY TRAILER WIDTH (CUT TO FIT) (2 REQD). NAIL TO BOTTOM EDGE OF PIECE MARKED ① W/1-10d NAIL EVERY 8".
- ③ SIDE STRUT, 2" X 6" BY CUT TO FIT BETWEEN THE FORWARD AND REAR PIECES MARKED ① (2 REQD). SEE SPECIAL NOTE 3 AT THE LEFT.
- ④ POCKET CLEAT, 2" X 6" X 18" (2 REQD). NAIL TO PIECE MARKED ③ W/5-10d NAILS. TOENAIL TO FORWARD PIECE MARKED ① W/3-12d NAILS.
- ⑤ STRUT RETAINING BLOCK, 2" X 6" X 12" (2 REQD). NAIL TO PIECE MARKED ③ W/3-10d NAILS. TOENAIL TO REAR PIECE MARKED ① W/3-12d NAILS.
- ⑥ CENTER CLEAT, 2" X 6" X 30" (1 REQD). NAIL TO FORWARD PIECE MARKED ① W/6-10d NAILS.
- ⑦ DIAGONAL BRACE, 2" X 6" BY CUT TO FIT (2 REQD). DOUBLE BEVEL EACH END WITH 45° CUTS. INSTALL AT 45° ANGLE AS SHOWN AND TOENAIL TO PIECES MARKED ③ AND ⑥ W/2-16d NAILS AT EACH END.
- ⑧ SIDE CLEAT, 2" X 6" X 24" (2 REQD). NAIL TO PIECE MARKED ③ W/8-10d NAILS. TOENAIL TO PIECE MARKED ⑨ W/2-12d NAILS.
- ⑨ DIAGONAL BRACE SUPPORT, 2" X 4" X 12" (2 REQD). CENTER UNDER JOINT OF PIECES MARKED ⑦ AND ⑧.
- ⑩ STRUT BRACING, 2" X 4" BY TRAILER WIDTH MINUS 3-1/4" (CUT TO FIT) (MINIMUM OF 1 REQD). INSTALL ONE (1) AGAINST PIECE MARKED ⑤ AS SHOWN. ONE (1) ADDITIONAL PIECE IS REQUIRED FOR EVERY 7'-0" OF STRUT LENGTH. NAIL TO PIECES MARKED ⑤ W/2-12d NAILS AT EACH END OR TOENAIL TO PIECES MARKED ③ W/4-12d NAILS AT EACH END, AS APPLICABLE. CAUTION: USE CARE WHEN TOENAILING TO PREVENT NAILING INTO THE SIDE WALL OF A TRAILER.
- ⑪ BACK-UP CLEAT, 2" X 6" X 36" (QUADRUPLED) (4 REQD). POSITION AS SHOWN. NAIL FIRST PIECE TO THE TRAILER FLOOR W/9-12d NAILS. NAIL EACH ADDITIONAL PIECE IN A LIKE MANNER. SEE SPECIAL NOTE 5 AT THE LEFT.