

# STORAGE IN 60' & 80' IGLOO AND 80' STRADLEY MAGAZINES OF CDU ITEMS PACKED TEN PER SKIDDED WOODEN BOX

## INDEX

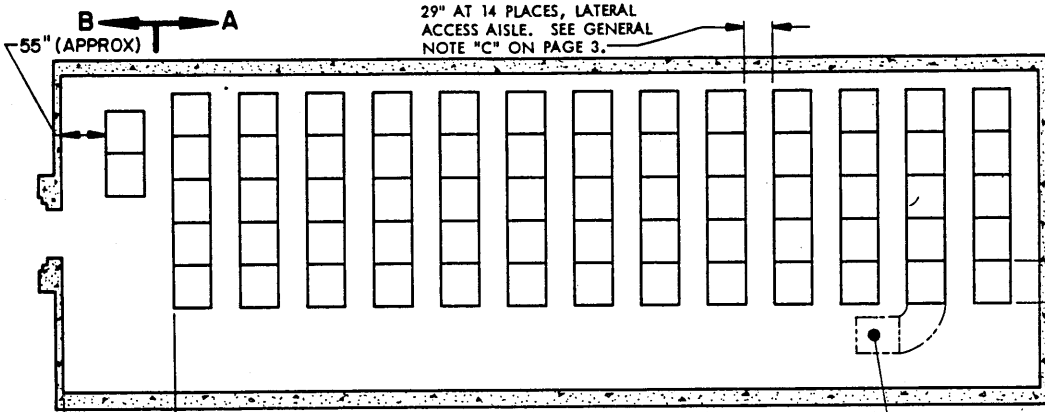
ITEM	PAGE (S)
GENERAL NOTES, AND MATERIAL SPECIFICATIONS	3
IGLOO STORAGE PROCEDURES	2,3
STRADLEY STORAGE PROCEDURES	4,5

DRAFTSMAN <b>DLP AGC</b>	PROJ ENG <i>MWD/124</i>	APSA <i>PJS</i>	SUBMITTED <i>William J. ...</i> LTC ...
CHECKED <i>10/1/67</i>	APR JAMES CTR <i>12</i>		COMMANDING OFFICER, SAVANNAH ARMY DEPOT
REVISIONS			EXAMINED AND APPROVED <i>Ralph Hall</i> ARMUNITION PROCUREMENT & SUPPLY AGENCY
			APPROVED BY ORDER OF COMMANDING GENERAL U. S. ARMY MATERIEL COMMAND <i>Paul ...</i>
			U. S. ARMY MATERIEL COMMAND
			4 OCTOBER 1967
			CLASS DIVISION DRAWING FILE
			19 48 4068 1-14A 1001

DO NOT SCALE

**STORAGE AS SHOWN**  
**80' IGLOO**

ITEM	QUANTITY
SKIDDED BOX (W/CDU ITEMS)	255

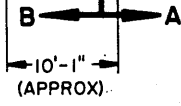


29" AT 14 PLACES, LATERAL ACCESS AISLE. SEE GENERAL NOTE "C" ON PAGE 3.

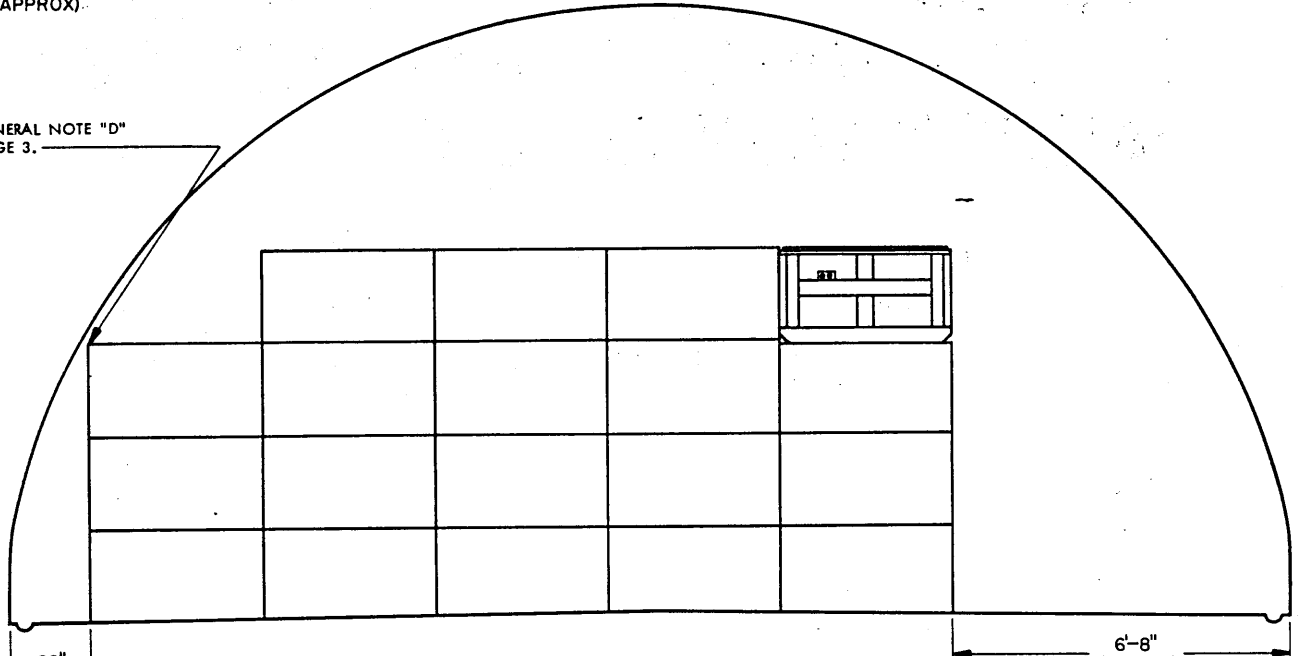
OMIT THIS ROW WHEN REQUIRED. SEE GENERAL NOTE "F" ON PAGE 3.

SEE GENERAL NOTE "E" ON PAGE 3.

**PLAN VIEW**  
(80' IGLOO)



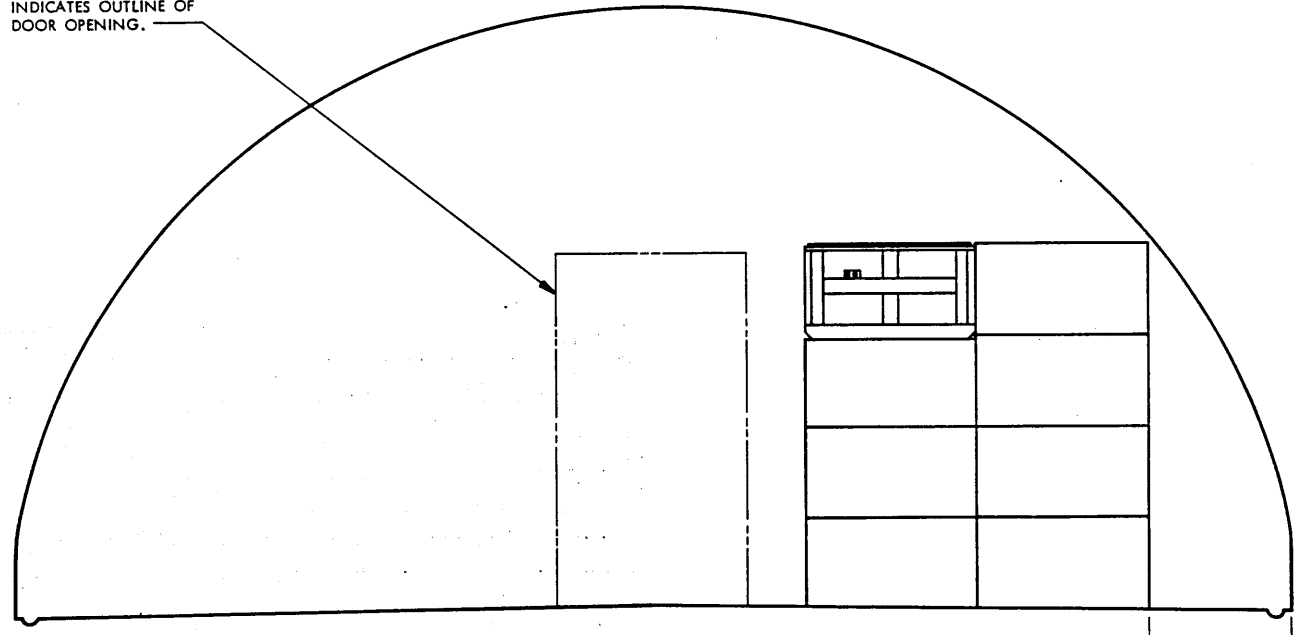
SEE GENERAL NOTE "D" ON PAGE 3.



**SECTION A-A**

19 SKIDDED BOXES PER STACK

INDICATES OUTLINE OF DOOR OPENING.



**SECTION B-B**

8 SKIDDED BOXES PER STACK

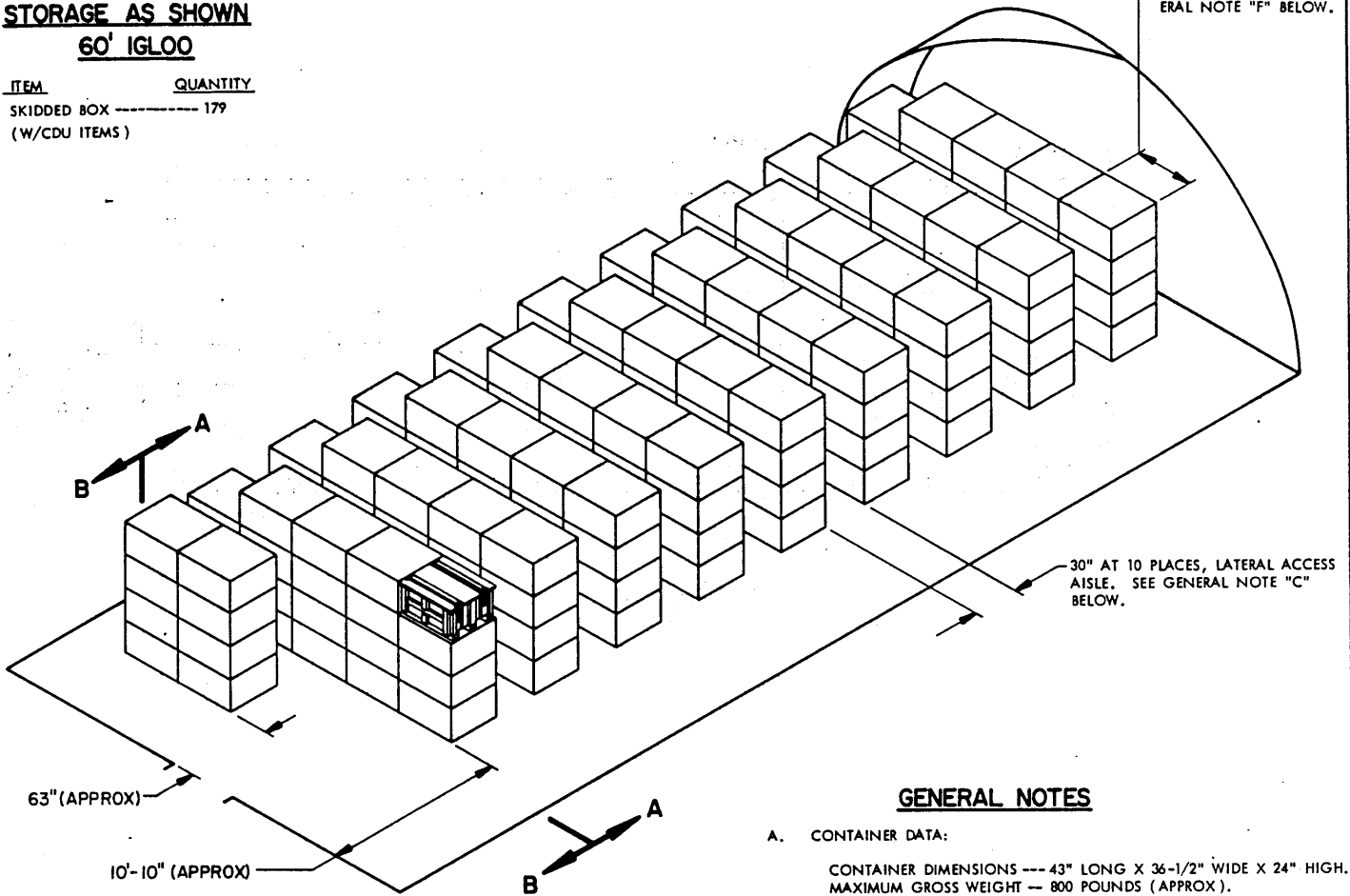
**IGLOO STORAGE PROCEDURES**

# STORAGE AS SHOWN

## 60' IGLOO

ITEM	QUANTITY
SKIDDED BOX (W/CDU ITEMS)	179

OMIT THIS ROW WHEN REQUIRED. SEE GENERAL NOTE "F" BELOW.

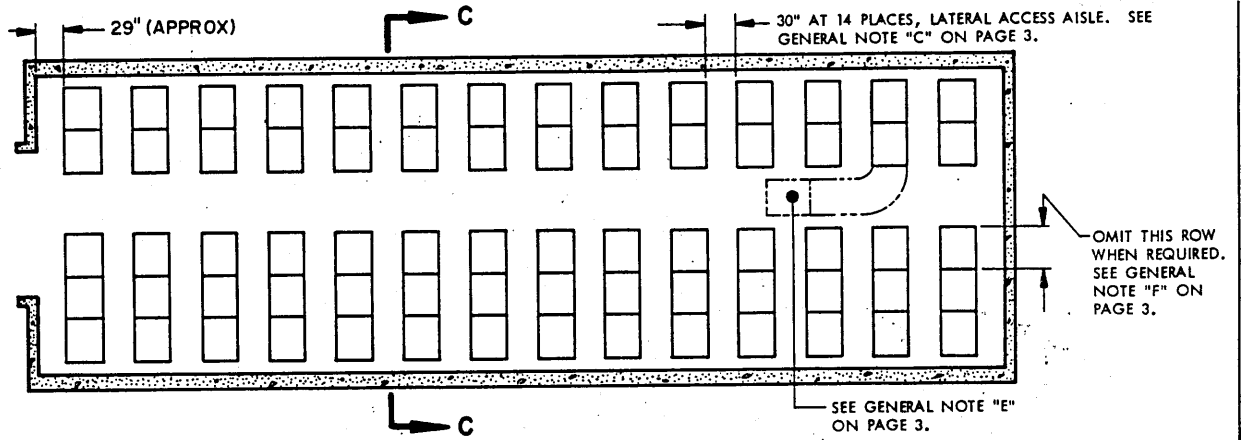


### ISOMETRIC VIEW

(60' IGLOO)

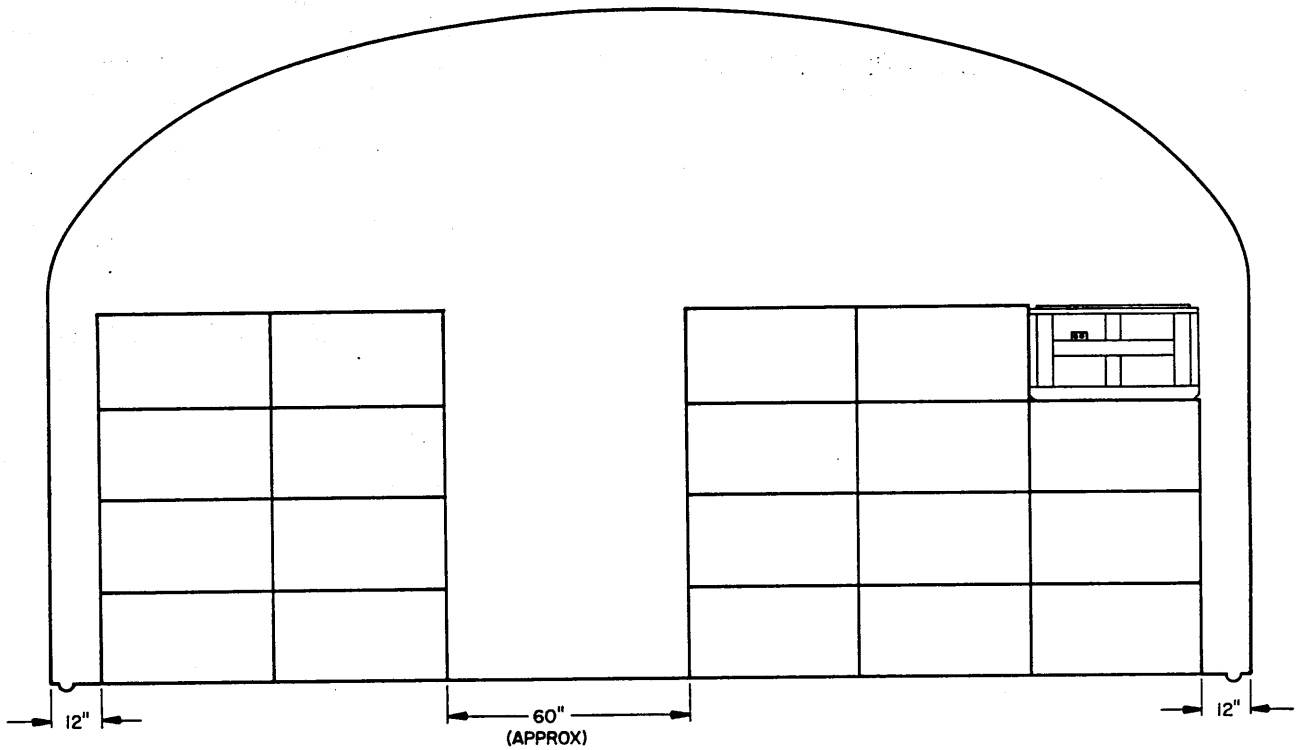
### GENERAL NOTES

- CONTAINER DATA:  
CONTAINER DIMENSIONS --- 43" LONG X 36-1/2" WIDE X 24" HIGH.  
MAXIMUM GROSS WEIGHT --- 800 POUNDS (APPROX).
- CAUTION:** CONTAINERS WILL NOT BE STACKED MORE THAN FOUR (4) HIGH. ALSO, LOTS WILL NOT BE MIXED WITHIN STORAGE STACKS, BUT ONLY TO THE EXTENT THAT ITEMS OF ONE LOT WILL NOT BE STACKED ON TOP OF ITEMS OF ANOTHER LOT.
- AISLE DIMENSIONS SHOWN HEREIN MAY BE ADJUSTED TO SUIT LOCAL CONDITIONS AND/OR AVAILABLE MATERIALS HANDLING EQUIPMENT (MHE); HOWEVER, A TWENTY-NINE INCH (29") (MINIMUM) LATERAL ACCESS AISLE IS REQUIRED BETWEEN EACH STACK.
- STORED CONTAINERS MUST NOT CONTACT THE WALL OF A MAGAZINE. TO PROVIDE FOR THIS MANDATORY CLEARANCE REQUIREMENT, CONTAINERS WITH ITEMS MAY BE ELIMINATED FROM THE DEPICTED STACKING PATTERN AS NECESSARY.
- THE 6'-8" (APPROX) LONGITUDINAL ACCESS AISLE IN THE IGLOO MAGAZINE AND THE 60" (APPROX) LONGITUDINAL ACCESS AISLE IN THE STRADLEY MAGAZINE WILL PERMIT EASY REMOVAL OF THE ADJACENT 4-HIGH CONTAINER STACKS BY USING A PALLET JACK TO POSITION THE STACK INTO THE ACCESS AISLE. A FORKLIFT TRUCK CAN THEN BE USED TO REMOVE THE STACK FROM MAGAZINE.
- IF PALLET JACKS, AS REFERENCED IN NOTE "E", ARE NOT AVAILABLE FOR USE, IT WILL BE NECESSARY TO OMIT EACH 4-HIGH CONTAINER STACK IN THE ROW INDICATED, TO PROVIDE OPERATING ROOM FOR FORKLIFT TRUCKS.



**PLAN VIEW**

(80' STRADLEY)

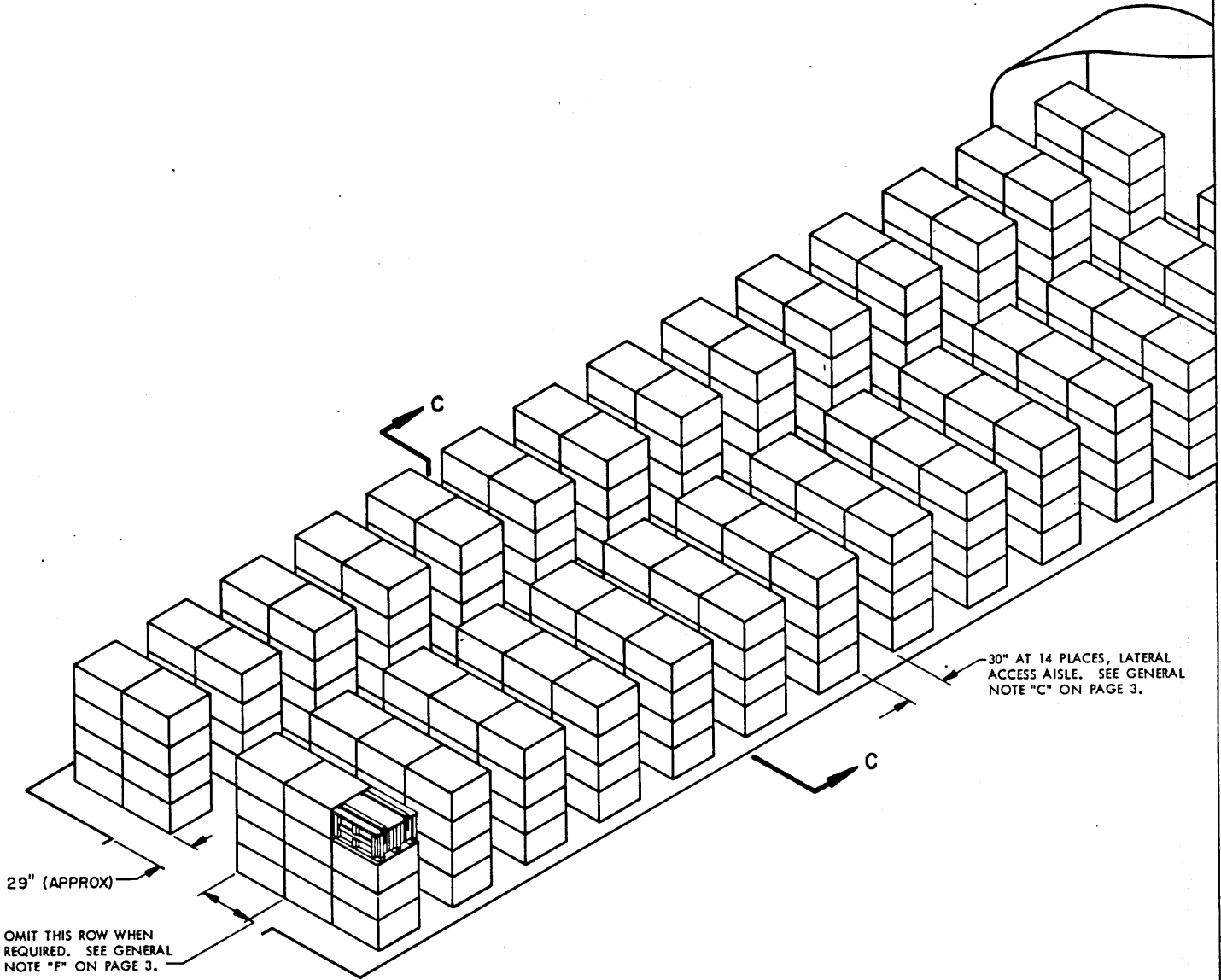


**SECTION C-C**

20 SKIDDED BOXES PER STACK

**STORAGE AS SHOWN**  
**80' STRADLEY**

ITEM	QUANTITY
SKIDDED BOX (W/CDU ITEMS)	280



**ISOMETRIC VIEW**  
 (80' STRADLEY)

**FOR "GENERAL NOTES", SEE PAGE 3.**

10/10/67  
10/10/67