

# STORAGE IN IGLOO AND STRADLEY MAGAZINES OF SIMULATOR, ATOMIC EXPLOSION, M142, PACKED IN STEEL DRUM

## INDEX

<u>ITEM</u>	<u>PAGE(S)</u>
GENERAL NOTES, AND MATERIAL SPECIFICATIONS.....	3
IGLOO STORAGE (PALLETIZED).....	2, 3
IGLOO STORAGE (UNPALLETIZED).....	4, 5
STRADLEY STORAGE (PALLETIZED).....	6, 7
STRADLEY STORAGE (UNPALLETIZED).....	8, 9
DETAILS.....	10

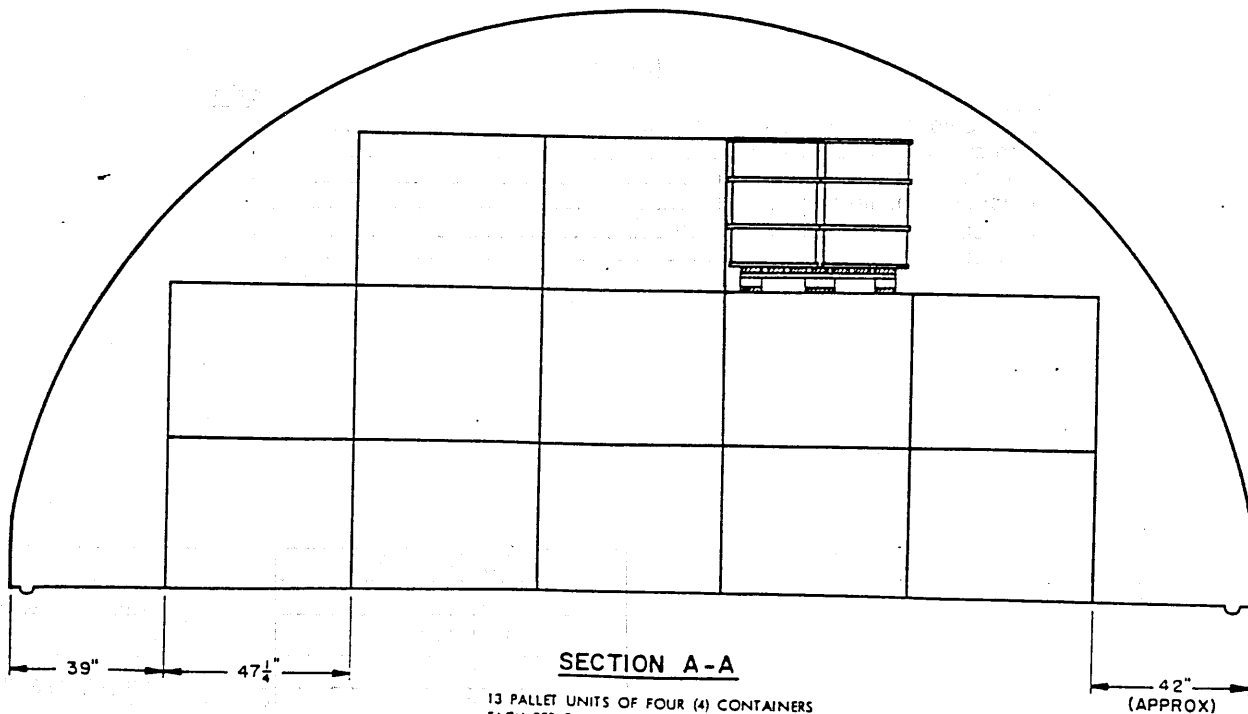
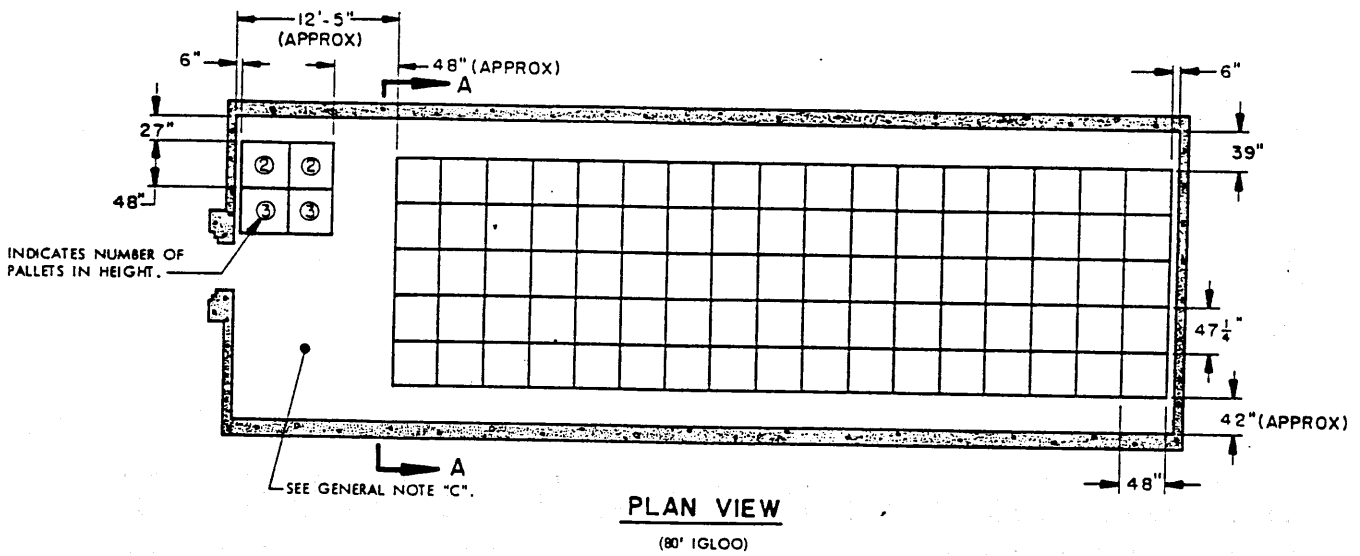
DRAFTSMAN <b>JEE</b>	PROJ ENG DIW/ <i>126</i>	APSA EMCG	SUBMITTED <i>B. B. Abrams, Col.</i>
CHECKER <i>JDS</i>	AMC ARMO CFA <i>725</i>		COMMANDING OFFICER, SAVANNAH ARMY DEPOT
REVISIONS			EXAMINED AND APPROVED <i>[Signature]</i>
			AMMUNITION PROCUREMENT & SUPPLY AGENCY U. S. ARMY MATERIEL COMMAND
			<i>[Signature]</i>
			U. S. ARMY MATERIEL COMMAND
			21 MARCH 1967
			CLASS    DIVISION    DRAWING    FILE
			19        48        4064    I-14F1000

DO NOT SCALE

**STORAGE AS SHOWN**

**80' IGLOO**

ITEM	QUANTITY
SIMULATOR, ATOMIC EXPLOSION ----- 924	

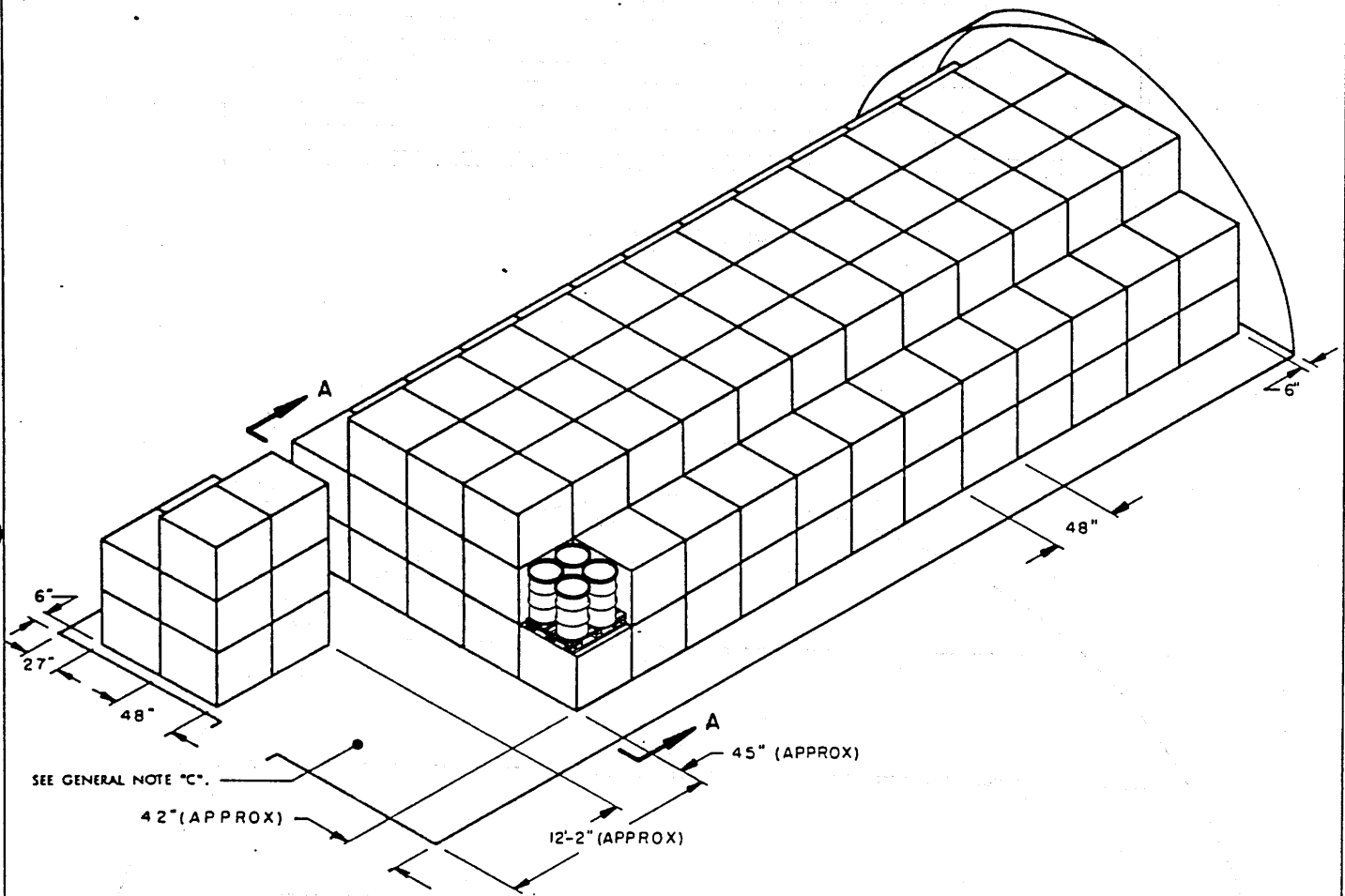


**IGLOO STORAGE (PALLETIZED)**

**STORAGE AS SHOWN**

**60' IGLOO**

<u>ITEM</u>	<u>QUANTITY</u>
SIMULATOR, ATOMIC EXPLOSION -----	664



**ISOMETRIC VIEW**

(60' IGLOO)

**MATERIAL SPECIFICATIONS**

LUMBER: DUNNAGE LUMBER, TM 715-5500-1; FED SPEC MM-L-751.

**GENERAL NOTES**

- A. FOR DETAILS OF THE CONTAINER SEE DRAWING NO. 8864243.  
CONTAINER DIMENSIONS ---- 23-5/8" DIAMETER X 35-3/16" HIGH.  
GROSS WEIGHT ----- 201 POUNDS (APPROX).
- B. AISLE DIMENSIONS SHOWN HEREIN MAY BE ADJUSTED TO SUIT LOCAL CONDITIONS AND/OR AVAILABLE MATERIAL HANDLING EQUIPMENT (MHE).
- C. IF THE AVAILABLE MHE PERMITS, ADDITIONAL UNITS MAY BE STORED WITHIN THE FRONTAL AREA OF A MAGAZINE.
- D. STORED CONTAINERS MUST NOT CONTACT THE WALL OF A MAGAZINE. TO PROVIDE FOR THIS MANDATORY CLEARANCE REQUIREMENT, CONTAINERS MAY BE ELIMINATED FROM THE DEPICTED STACKING PATTERN AS NECESSARY.

**IGLOO STORAGE (PALLETIZED)**

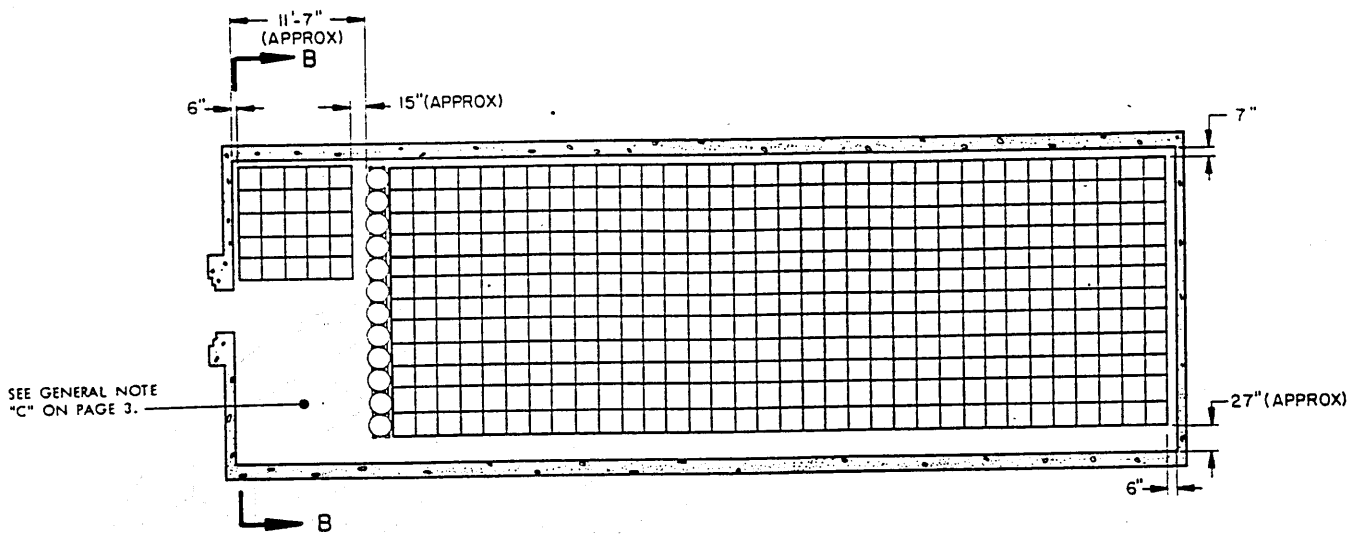
**STORAGE AS SHOWN**

**80' IGLOO**

ITEM

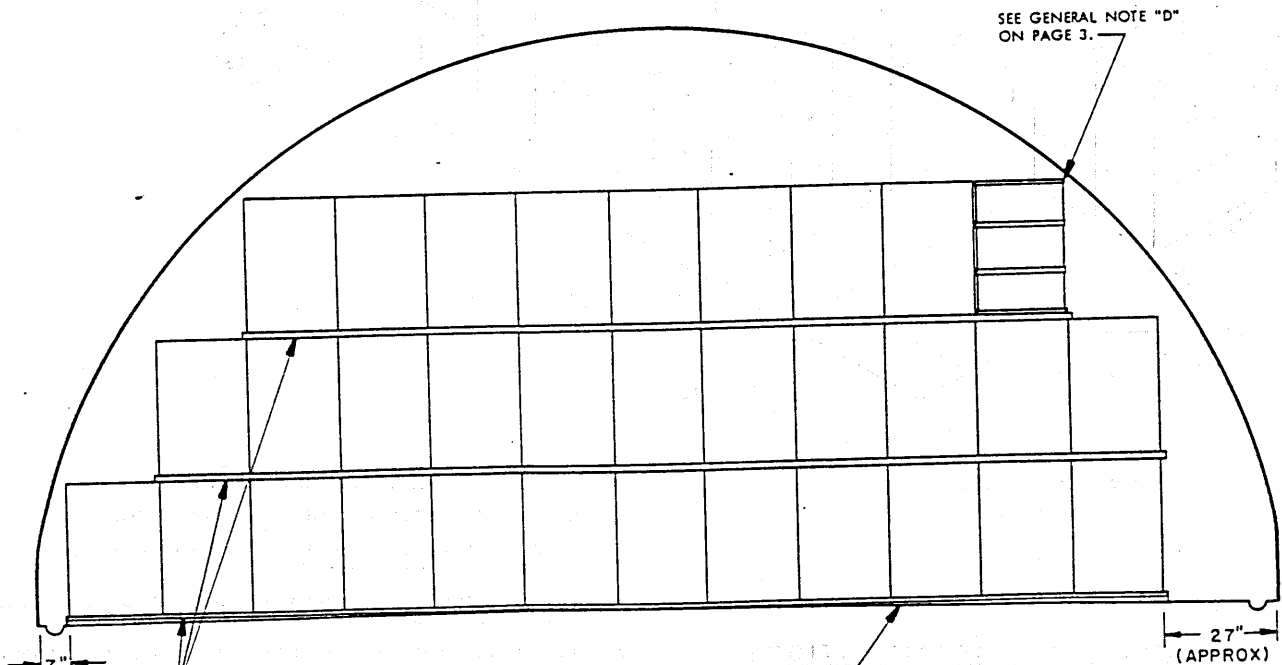
QUANTITY

SIMULATOR, ATOMIC EXPLOSION ----- 1,180



**PLAN VIEW**

(80' IGLOO)



FLOOR AND/OR INTERMEDIATE DUNNAGE, 2" X 4" X LENGTH REQUIRED TO EXTEND 1" BEYOND THE END CONTAINERS. THE USE OF RANDOM LENGTH PIECES IS PERMITTED, IF THEY ARE NOT SHORTER THAN 30"; STAGGER JOINTS ON THE SAME LEVEL WITHIN A STACK.

**SECTION B-B**

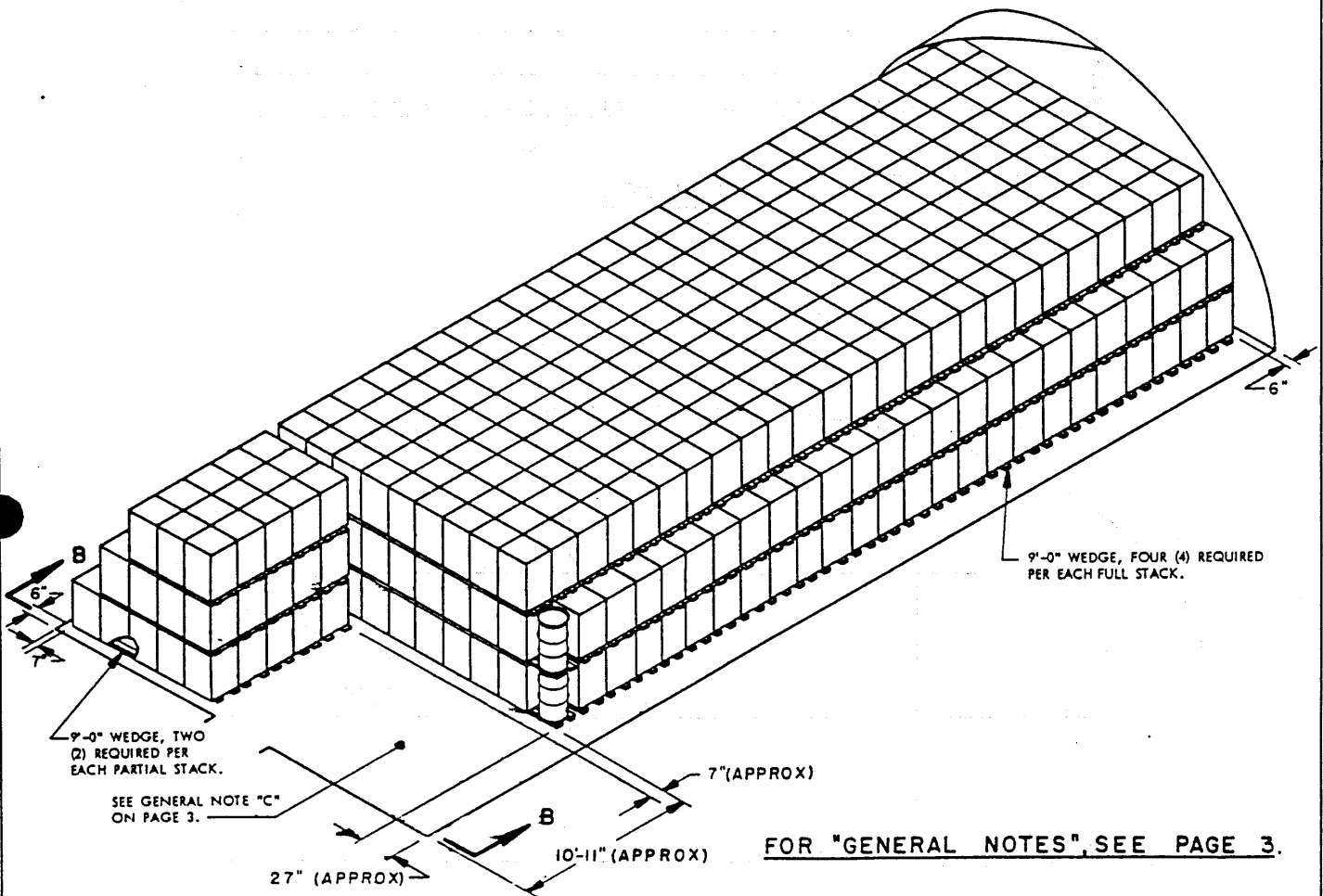
32 CONTAINERS PER EACH FULL STACK AND 12 CONTAINERS PER EACH PARTIAL STACK.

**IGLOO STORAGE (UNPALLETIZED)**

**STORAGE AS SHOWN**

**60' IGLOO**

<u>ITEM</u>	<u>QUANTITY</u>
SIMULATOR, ATOMIC EXPLOSION -----	860



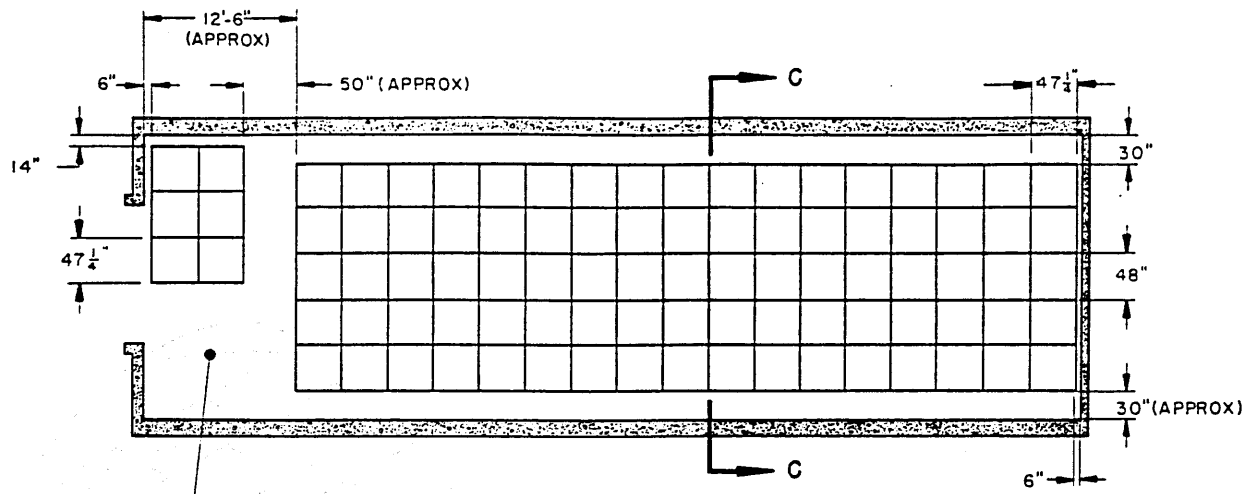
FOR "GENERAL NOTES", SEE PAGE 3.

**ISOMETRIC VIEW**

(60' IGLOO)

BILL OF MATERIAL PER STACK			
STACK TYPE	FLOOR AND/OR INTERMEDIATE DUNNAGE		
	LUMBER	LINEAR FEET	BOARD FEET
FULL	2" X 4"	128	86
PARTIAL	2" X 4"	48	32
WEDGES PER STACK	LUMBER	LENGTH	NUMBER REQD
	FULL	2" X 4"	9'-0"
PARTIAL	2" X 4"	9'-0"	2

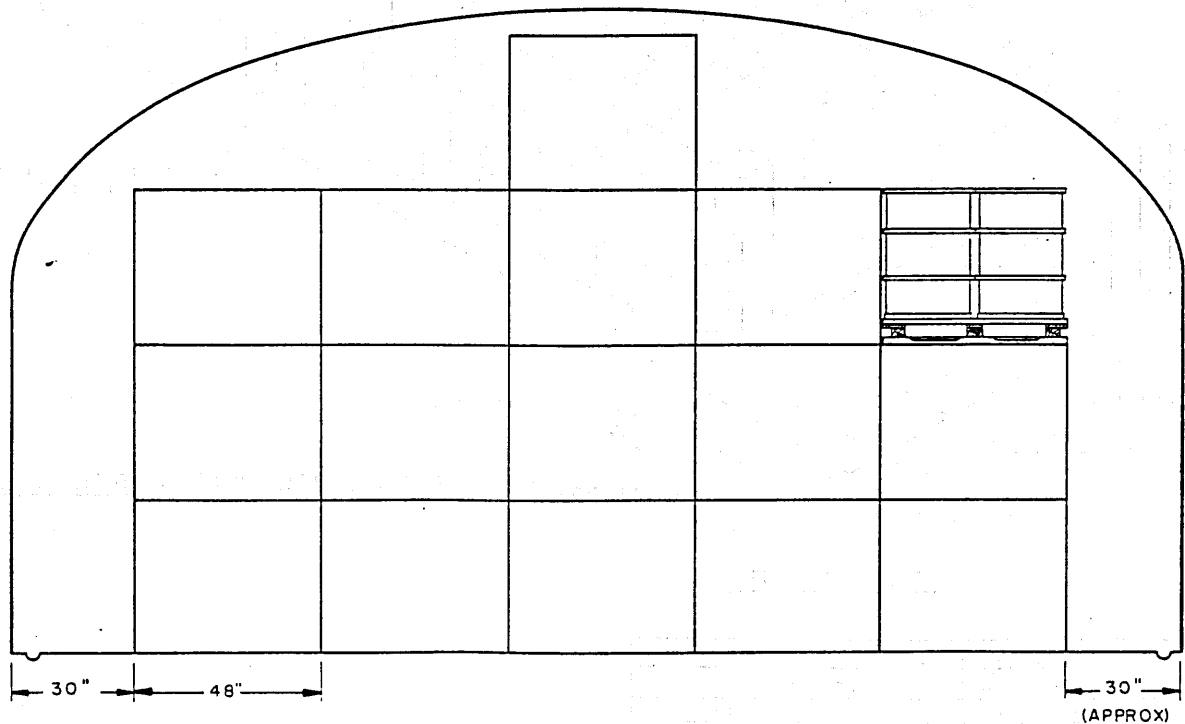
**IGLOO STORAGE (UNPALLETIZED)**



SEE GENERAL NOTE "C"  
ON PAGE 3.

**PLAN VIEW**

(80' STRADLEY)



**SECTION C-C**

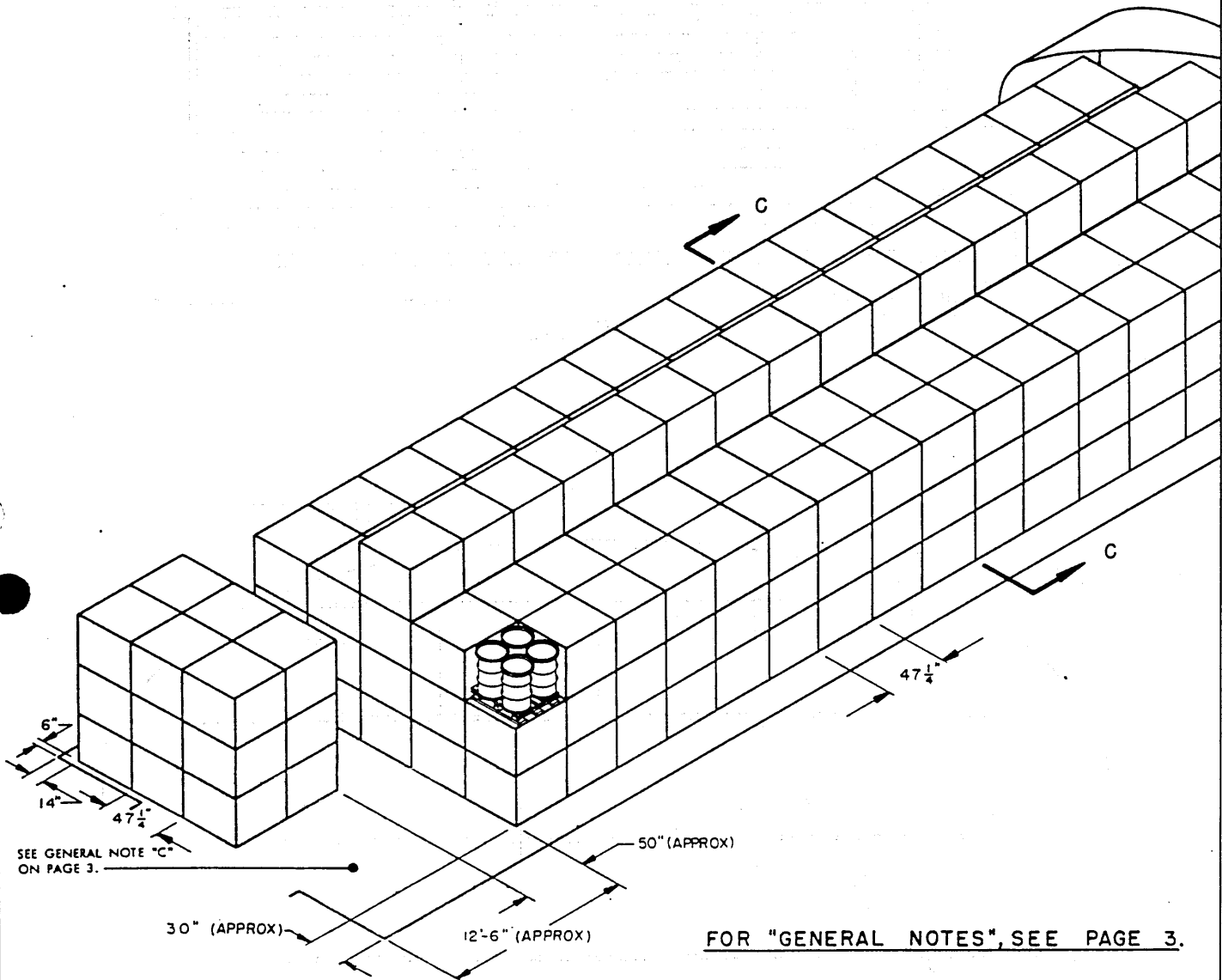
21 PALLET UNITS OF FOUR (4) CON-  
TAINERS EACH PER FULL STACK.  
NOTE: 9 PALLET UNITS OF FOUR (4)  
CONTAINERS EACH PER PARTIAL STACK,  
AS SHOWN WITHIN THE OTHER STORAGE  
VIEWS.

**STRADLEY STORAGE (PALLETIZED)**

STORAGE AS SHOWN

80' STRADLEY

<u>ITEM</u>	<u>QUANTITY</u>
SIMULATOR, ATOMIC EXPLOSION -----	1,160

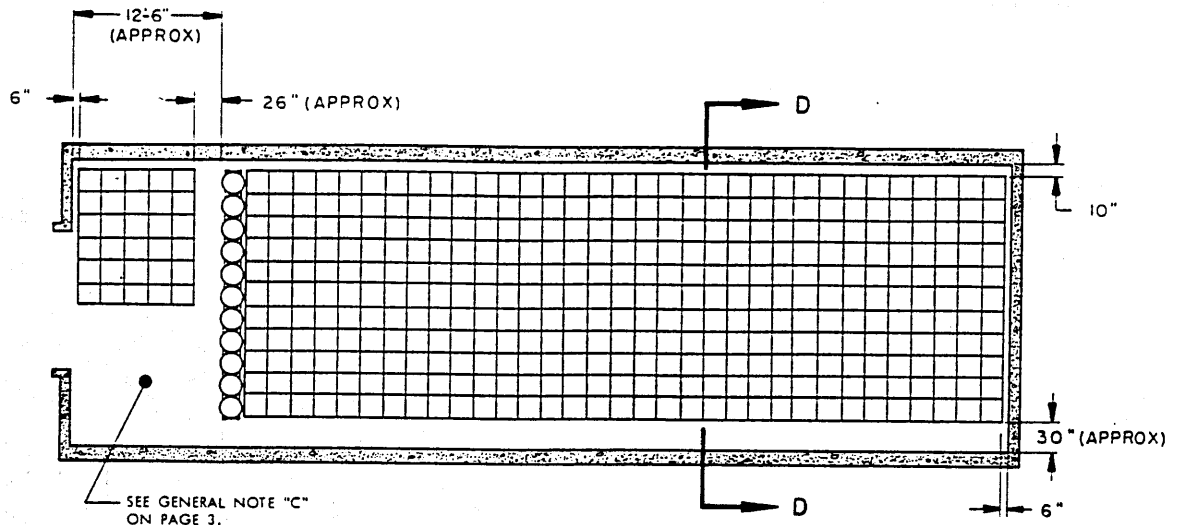


SEE GENERAL NOTE "C"  
ON PAGE 3.

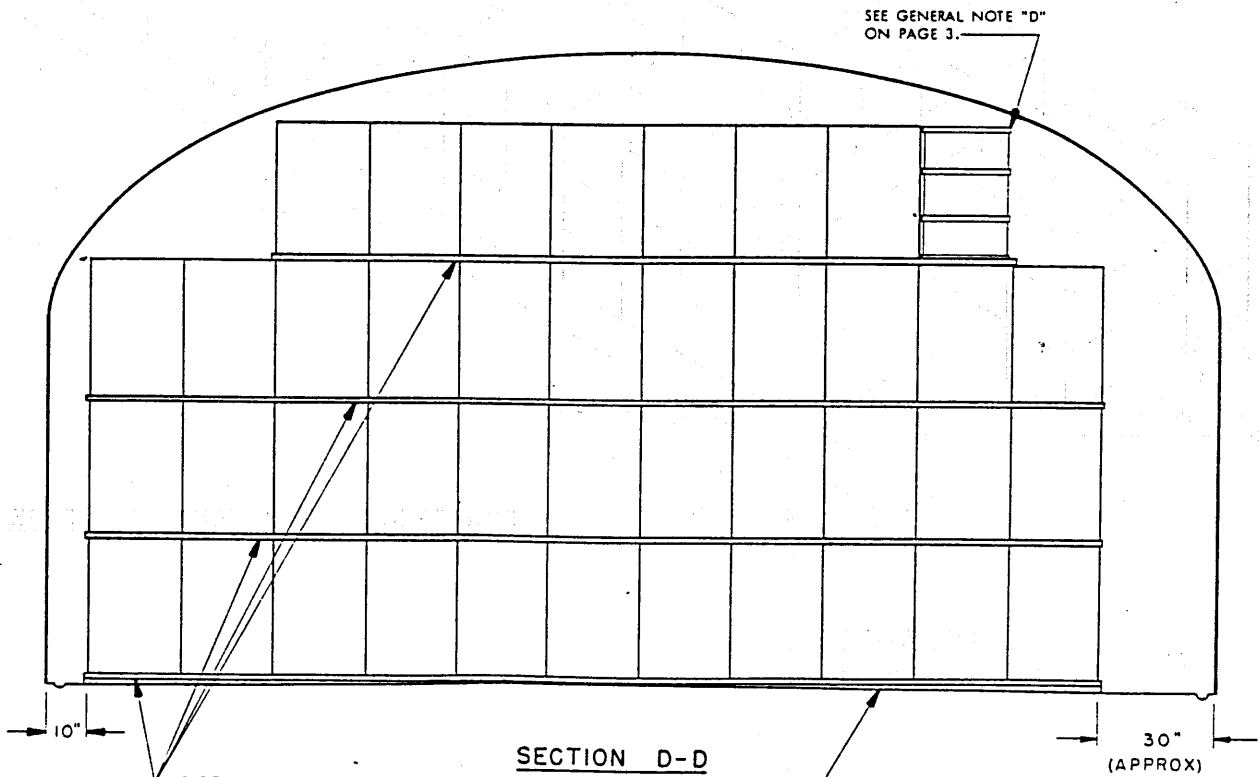
FOR "GENERAL NOTES", SEE PAGE 3.

ISOMETRIC VIEW  
(80' STRADLEY)

STRADLEY STORAGE (PALLETIZED)



**PLAN VIEW**  
(80' STRADLEY)



**SECTION D-D**

FLOOR AND/OR INTERMEDIATE DUNNAGE, 2" X 4" X LENGTH REQUIRED TO EXTEND 1" BEYOND THE END CONTAINERS. THE USE OF RANDOM LENGTH PIECES IS PERMITTED, IF THEY ARE NOT SHORTER THAN 30"; STAGGER JOINTS ON THE SAME LEVEL WITHIN A STACK.

41 CONTAINERS PER EACH FULL STACK. NOTE: 22 CONTAINERS PER EACH PARTIAL STACK AS SHOWN WITHIN THE OTHER STORAGE VIEWS.

9'-0" WEDGE, FOUR (4) REQUIRED PER EACH FULL STACK AND TWO (2) REQUIRED PER EACH PARTIAL STACK STORED WITHIN THE FRONTAL AREA OF THE MAGAZINE. SEE "WEDGE DETAIL" ON PAGE 10.

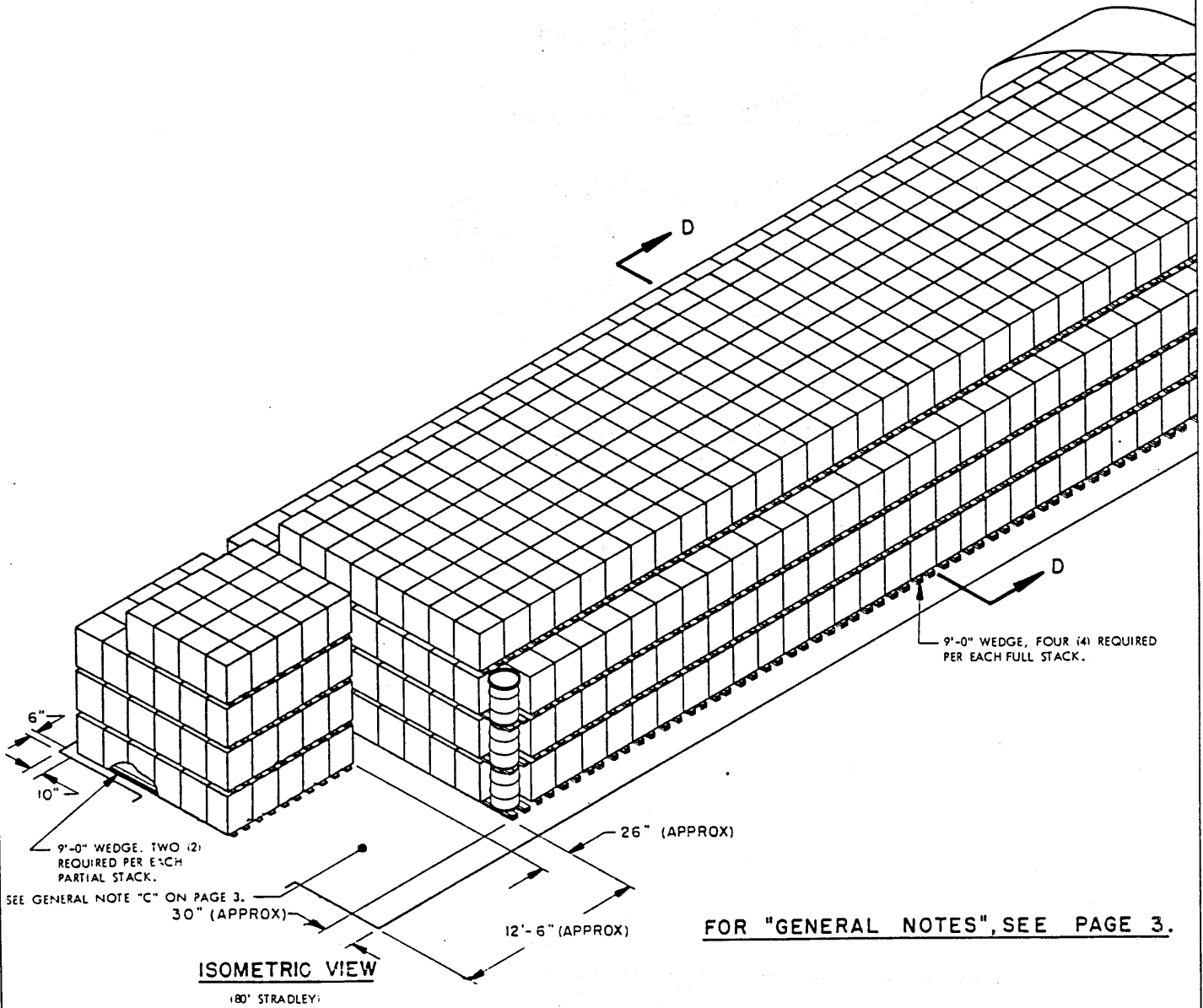
**STRADLEY STORAGE (UNPALLETIZED)**



**STORAGE AS SHOWN**

**80' STRADLEY**

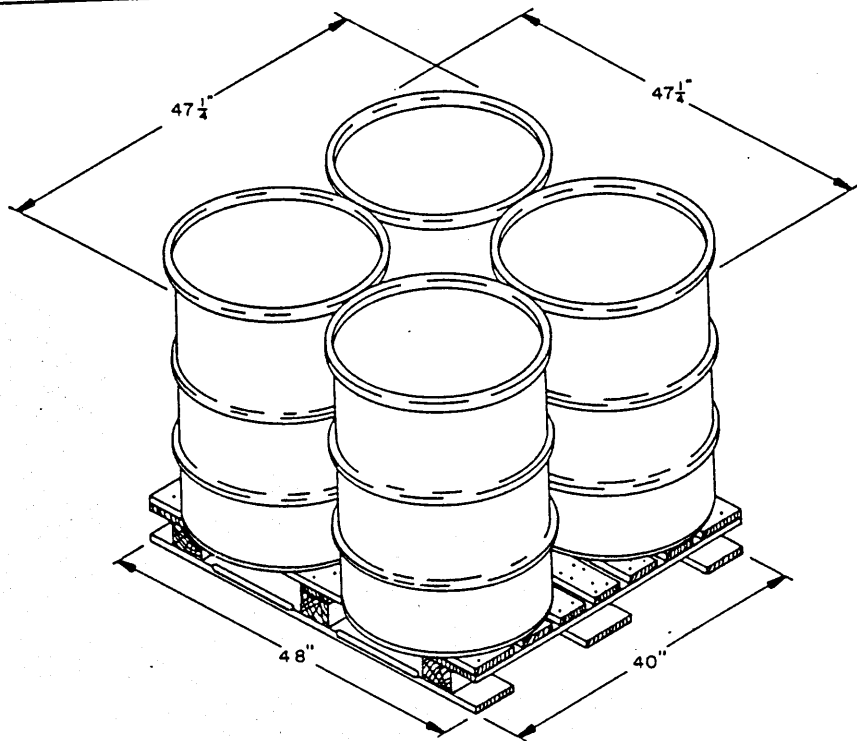
ITEM QUANTITY  
SIMULATOR, ATOMIC EXPLOSION ----- 1,504



FOR "GENERAL NOTES", SEE PAGE 3.

BILL OF MATERIAL PER STACK			
STACK TYPE	FLOOR AND OR INTERMEDIATE DUNNAGE		
	LUMBER	LINEAR FEET	BOARD FEET
FULL	2" X 4"	163	109
PARTIAL	2" X 4"	89	60
	WEDGES PER STACK		
	LUMBER	LENGTH	NUMBER REQD
FULL	2" X 4"	9'-0"	4
PARTIAL	2" X 4"	9'-0"	2

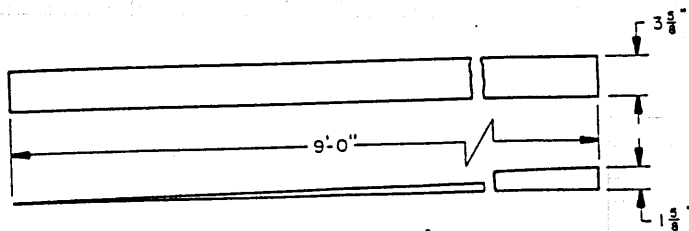
**STRADLEY STORAGE (UNPALLETIZED)**



**PALLET UNIT DETAIL**

**NOTE 1:** A MIL-P-15011 PALLET IS SHOWN ABOVE; HOWEVER, THIS IS A TYPICAL APPLICATION. ANY SUITABLE WOOD PALLET MAY BE SUBSTITUTED, PROVIDING IT IS AT LEAST 40" X 48" IN SIZE AND IS CONSTRUCTED SO THAT STACK STABILITY WILL BE MAINTAINED WHEN PALLET UNITS ARE STORED.

**NOTE 2:** IF DESIRED, THE DRUMS MAY BE BUNDLED WITH HORIZONTAL STRAPPING AND/OR STRAPPED TO THE PALLET. AT LEAST 3/4 INCH WIDE STRAPPING SHOULD BE USED FOR THESE PURPOSES.



**WEDGE DETAIL**

2" X 4" MATERIAL

**DETAILS**