

STORAGE IN 60' & 80' IGLOO  
 AND 80' STRADLEY MAGAZINES  
 OF MINE DISPERSING SYSTEM,  
 AIRCRAFT, XM47, PACKED IN  
 THE XM551 CONTAINER

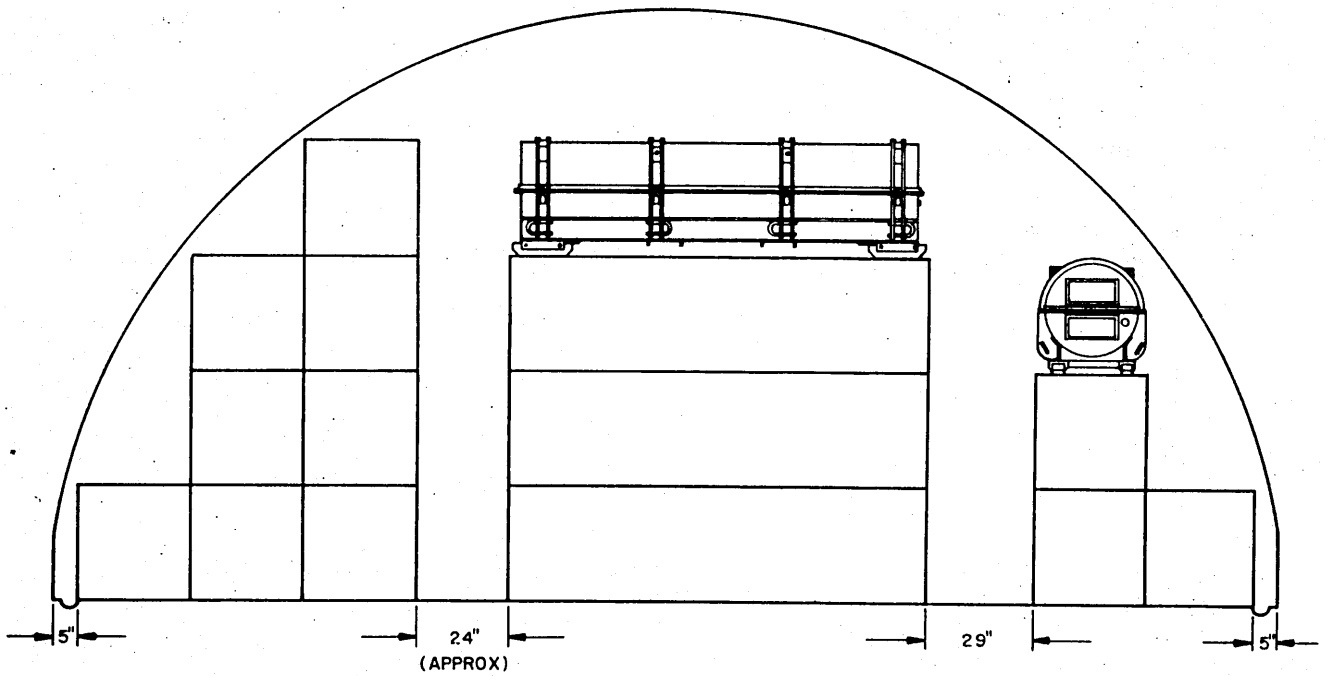
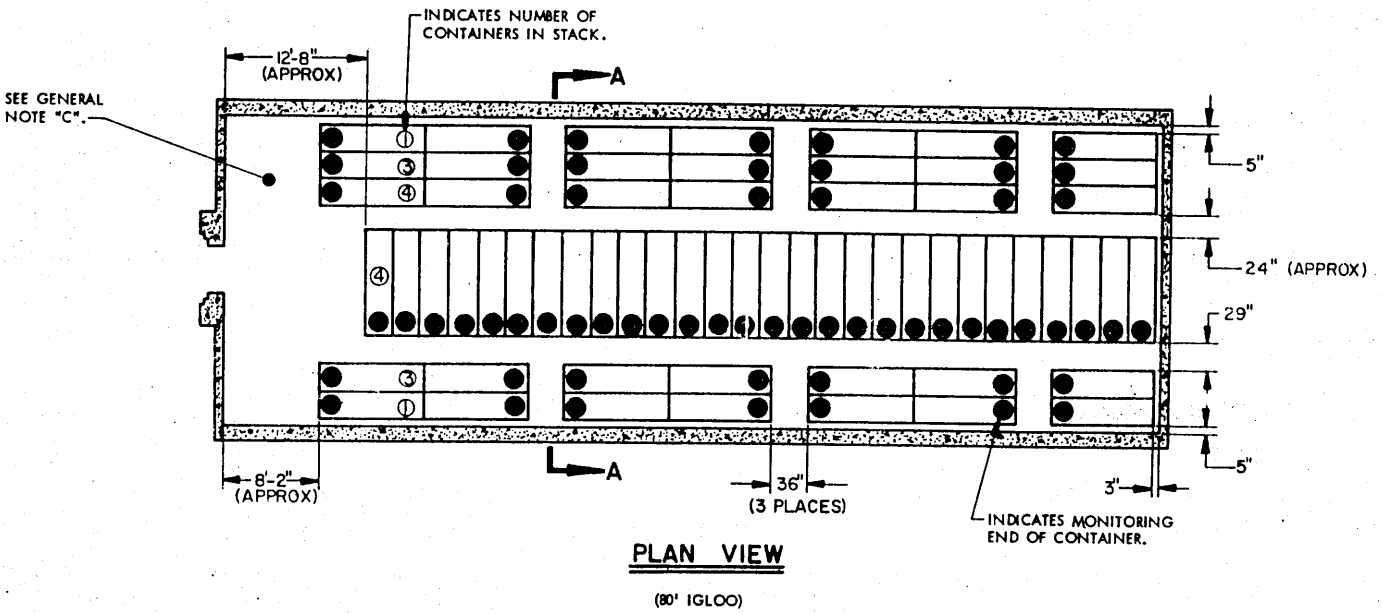
DRAFTER <b>DLP</b>		PROJ ENG / CTR / FILE <b>DW / RTH / 100</b>	SUBMITTED <b>B. B. Abram, Col.</b>	
CHECKED <b>MOH / JDS</b>		DATE <b>28</b>	COMMANDED BY <b>Ralph Hall</b>	
REVISIONS				
			APPROVED BY <b>Paul [Signature]</b>	
			U. S. ARMY MATERIEL COMMAND	
			9 JANUARY 1967	
			CLASS	DIVISION
			19	48
			DRAWING	FILE
			4061	I-44M1000

DO NOT SCALE

**STORAGE AS SHOWN**

**80' IGLOO**

ITEM	QUANTITY
XM551 CONTAINER W/ITEM	196

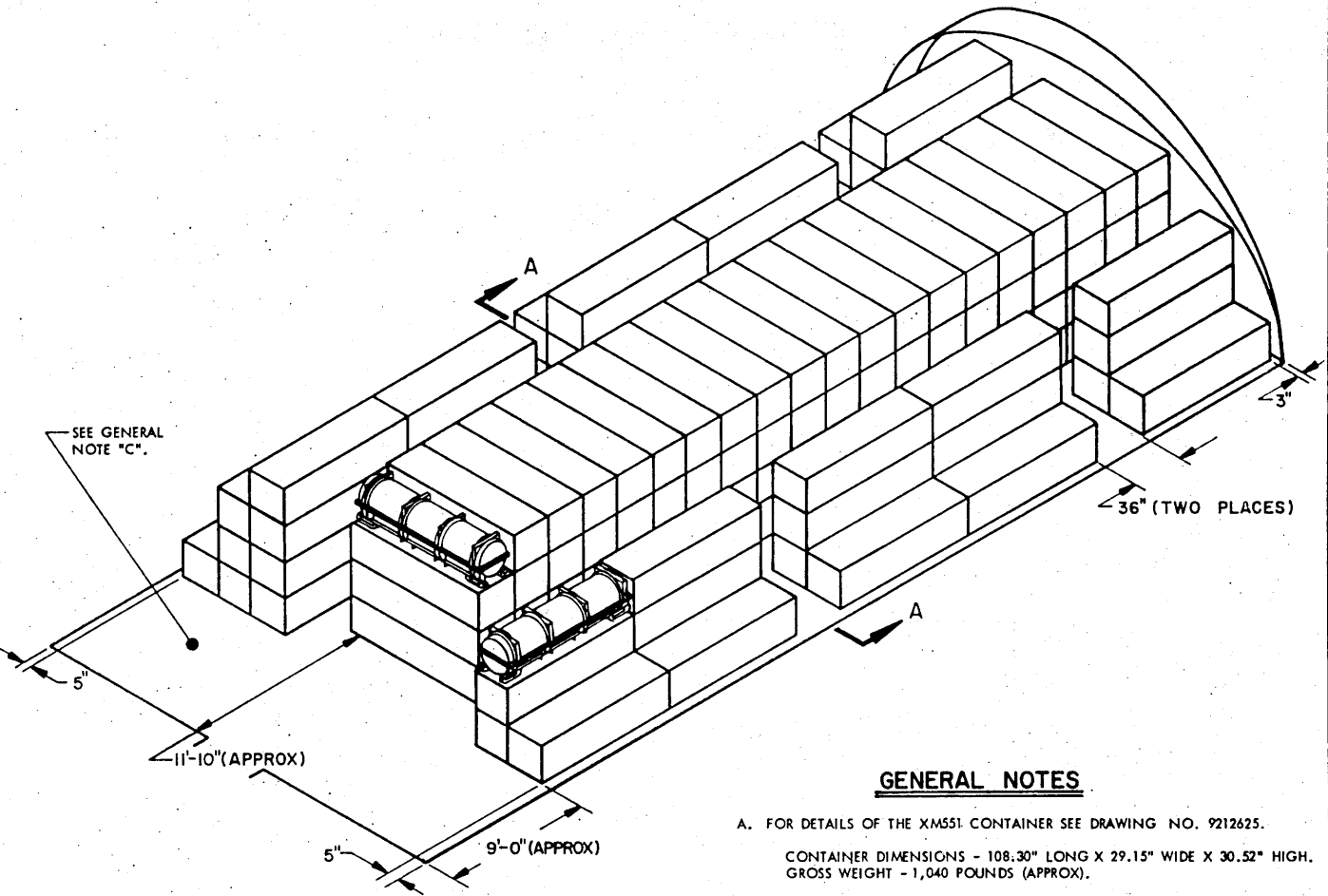


**IGLOO STORAGE**

STORAGE AS SHOWN

60' IGLOO

ITEM	QUANTITY
XM551 CONTAINER W/ITEM -----	140



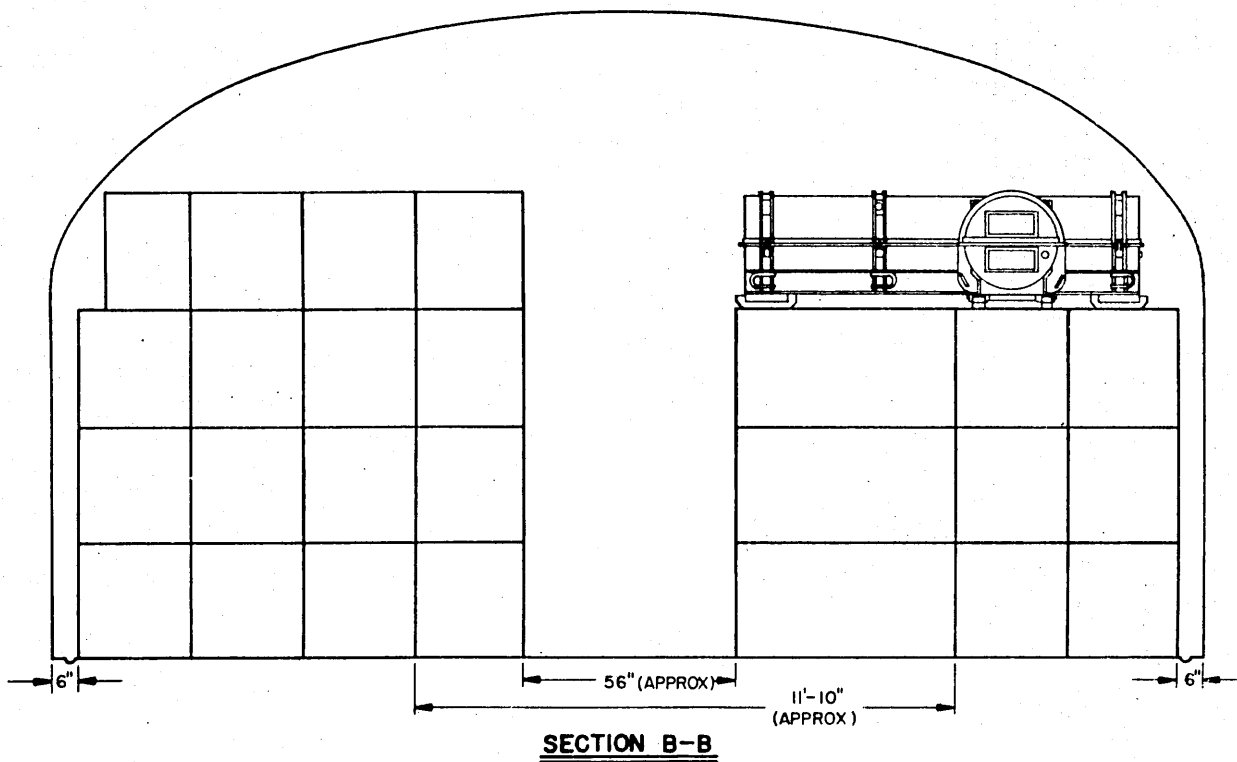
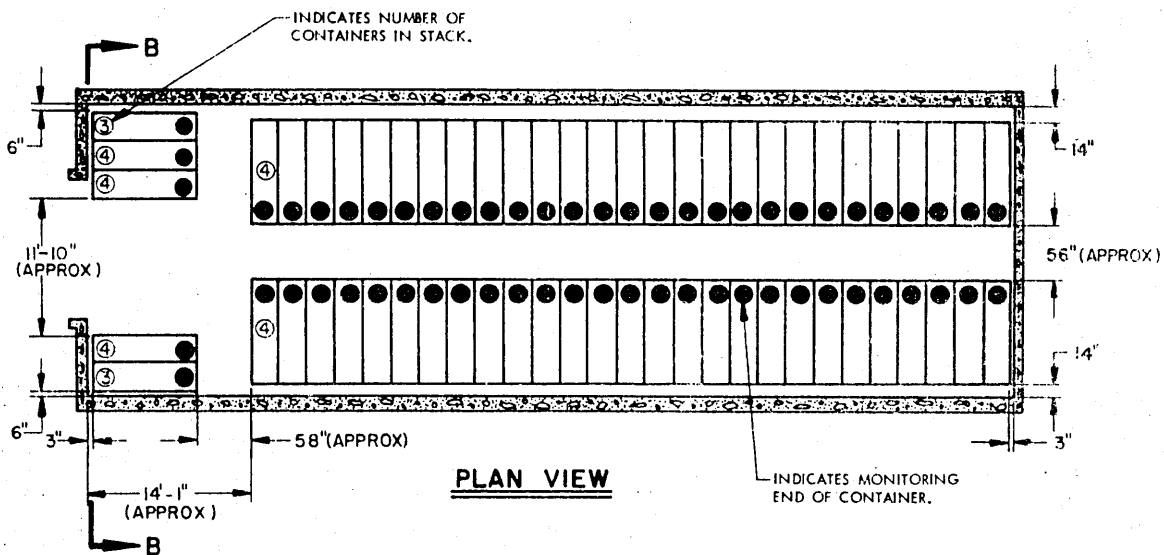
ISOMETRIC VIEW

(60' IGLOO)

GENERAL NOTES

- A. FOR DETAILS OF THE XM551 CONTAINER SEE DRAWING NO. 9212625.  
CONTAINER DIMENSIONS - 108.30" LONG X 29.15" WIDE X 30.52" HIGH.  
GROSS WEIGHT - 1,040 POUNDS (APPROX).
- B. AISLE DIMENSIONS SHOWN HEREIN MAY BE ADJUSTED TO SUIT LOCAL CONDITIONS AND/OR AVAILABLE MATERIAL HANDLING EQUIPMENT (MHE); HOWEVER, A TWENTY-FOUR (24) INCH (MINIMUM) ACCESS AISLE IS REQUIRED AT OPENING END OF CONTAINER.
- C. IF THE AVAILABLE MHE PERMITS, ADDITIONAL XM551 CONTAINERS W/ITEM MAY BE STORED WITHIN THE FRONTAL AREA OF AN IGLOO MAGAZINE.

IGLOO STORAGE

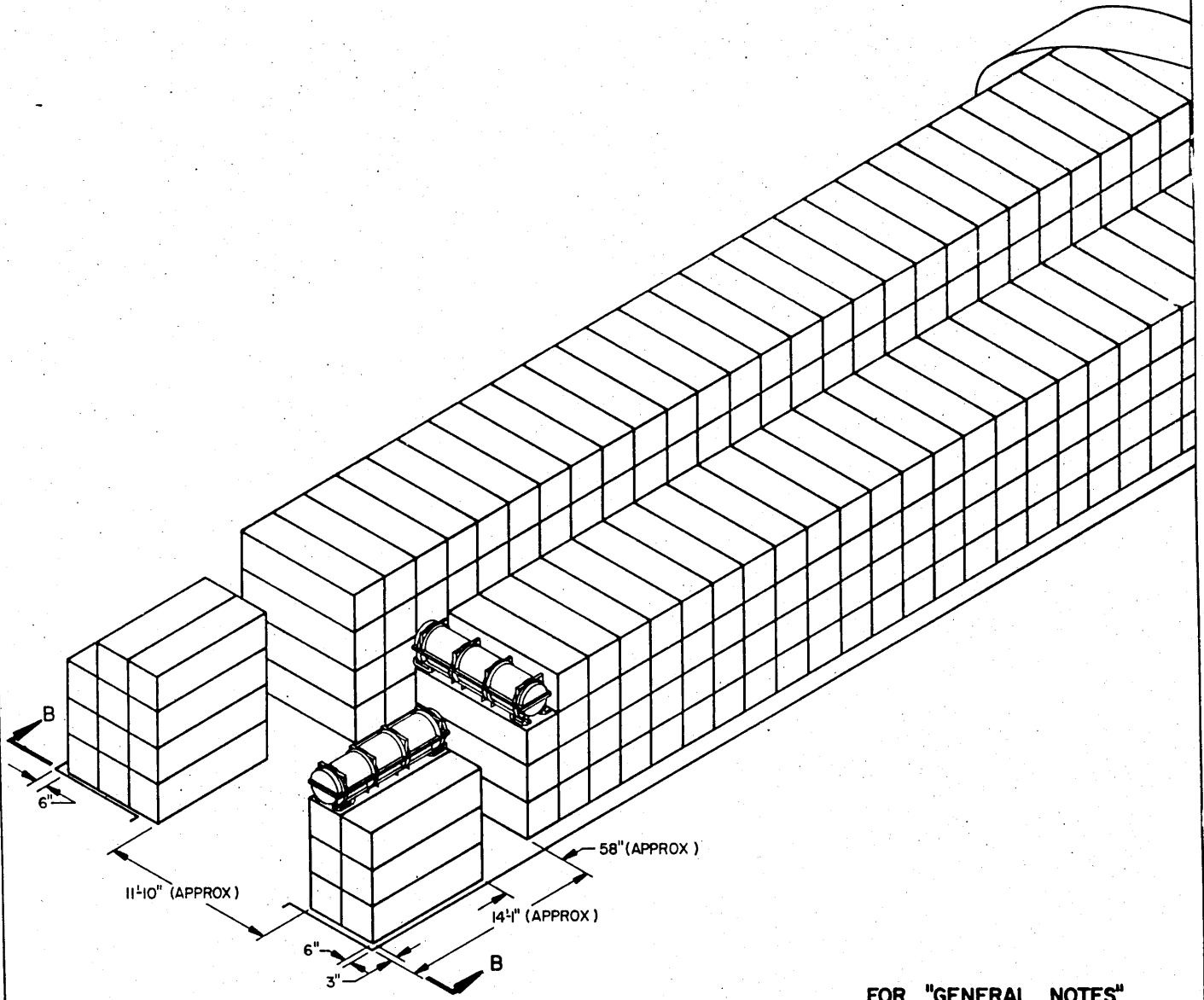


**STRADLEY STORAGE**

STORAGE AS SHOWN

80' STRADLEY

ITEM QUANTITY  
XM551 CONTAINER W/ITEM ----- 234



ISOMETRIC VIEW

FOR "GENERAL NOTES"  
SEE PAGE 3

STRADLEY STORAGE