

STORAGE IN 60' & 80' IGLOO  
 AND 80' STRADLEY MAGAZINES  
 OF CANISTER, ANTIPERSONNEL  
 MINE, XM2, IN SKIDDED WOODEN  
 BOX

DRAFTSMAN <b>WBL</b>	PROJ ENG <b>Diw/RNH</b>	APSA <b>PJS</b>	SUBMITTED <i>C. B. Wraane</i>	
CHECKER <i>JDS</i>	AMC ARMO CTR <i>[Signature]</i>		COMMANDING OFFICER, SAVANNAH ARMY DEPOT	
REVISIONS			EXAMINED AND APPROVED <i>Ralph Hall</i>	
			AMMUNITION PROCUREMENT & SUPPLY AGENCY	
			APPROVED BY ORDER OF COMMANDING GENERAL U. S. ARMY MATERIEL COMMAND	
			<i>Paul [Signature]</i>	
			U. S. ARMY MATERIEL COMMAND	
			9 NOVEMBER 1966	
			CLASS	DIVISION
			DRAWING	FILE
			19	48
			4059	I-14A1000

DO NOT SCALE

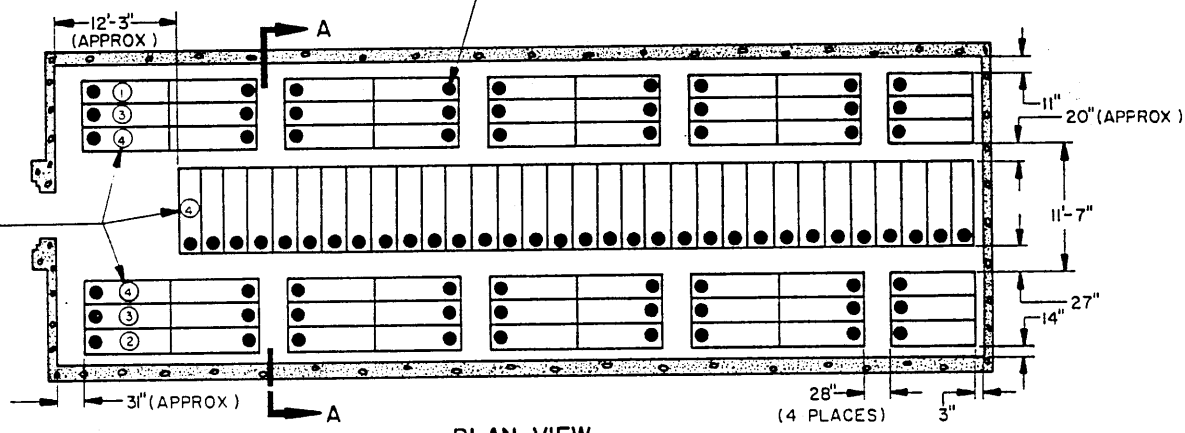
**STORAGE AS SHOWN**

**80' IGLOO**

ITEM	QUANTITY
ANTIPERSONNEL MINE	281

INDICATES POSITION FOR END OF CONTAINER WHICH OPENS FOR INSPECTION PURPOSES.

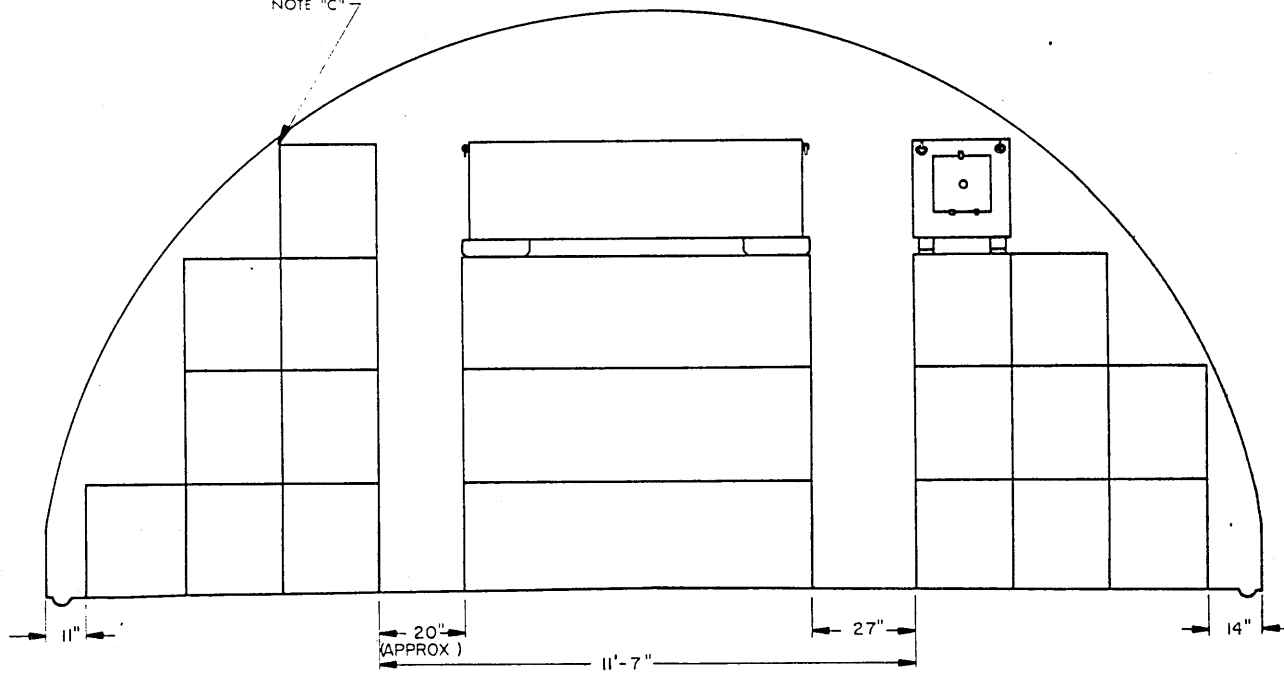
INDICATES NUMBER OF CONTAINERS IN HEIGHT.



**PLAN VIEW**

80' IGLOO

SEE GENERAL NOTE "C"



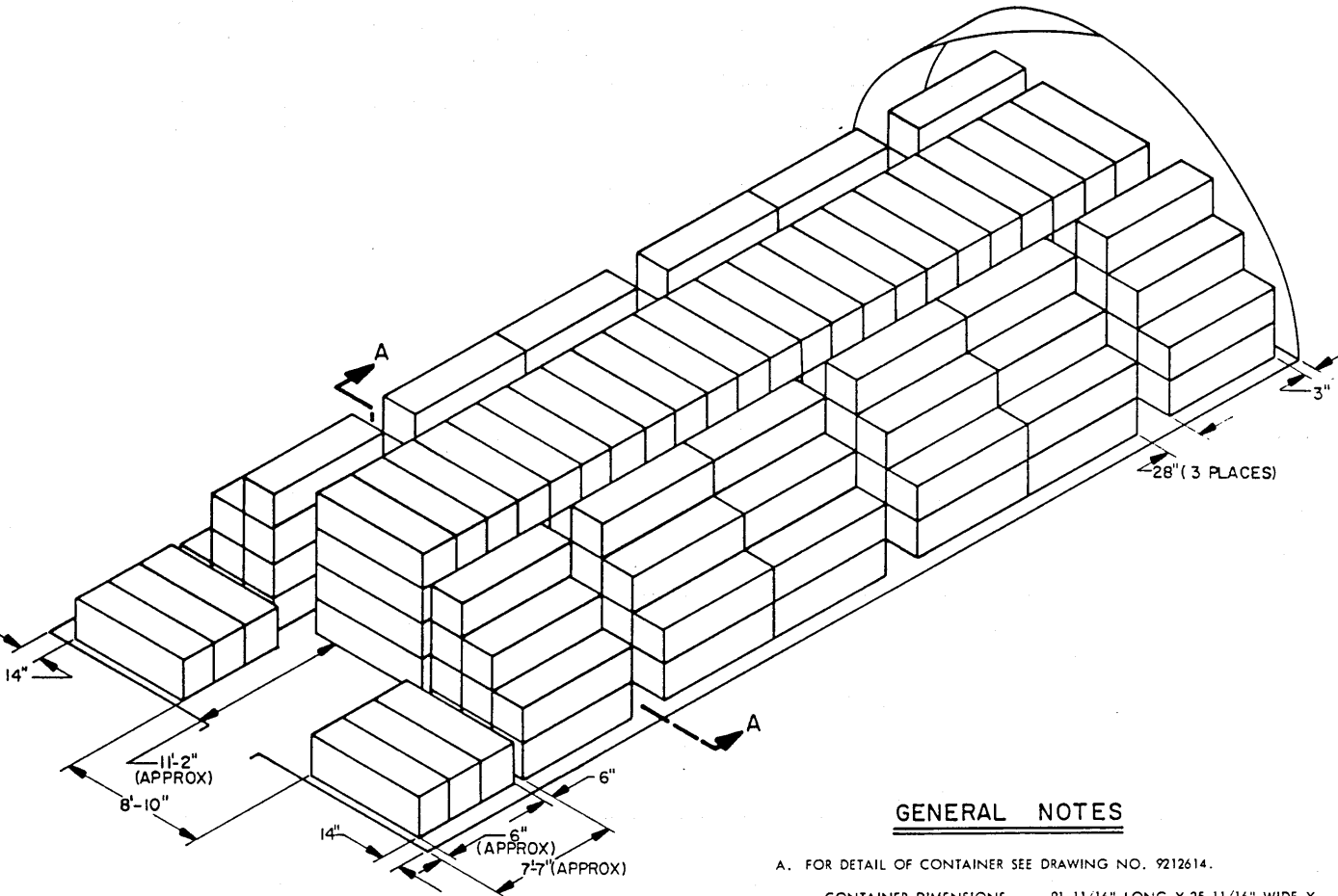
**SECTION A-A**

**IGLOO STORAGE**

**STORAGE AS SHOWN**

**60' IGLOO**

<u>ITEM</u>	<u>QUANTITY</u>
ANTIPERSONNEL MINE -----	200



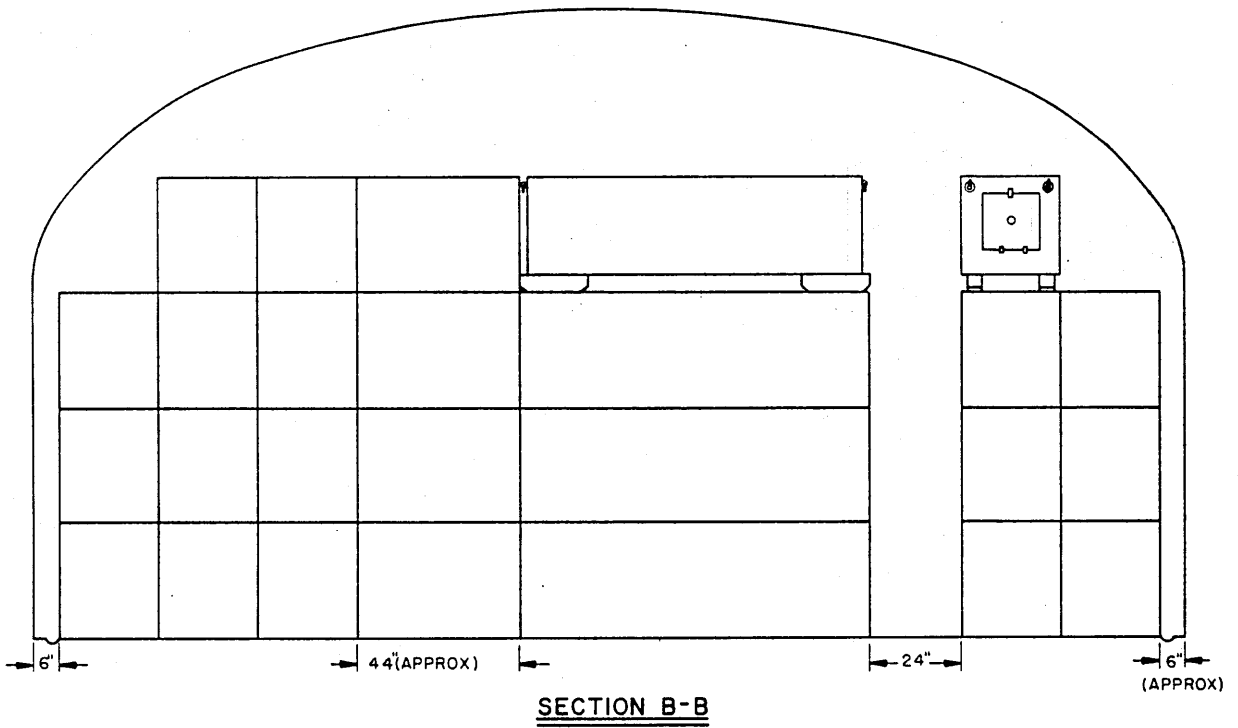
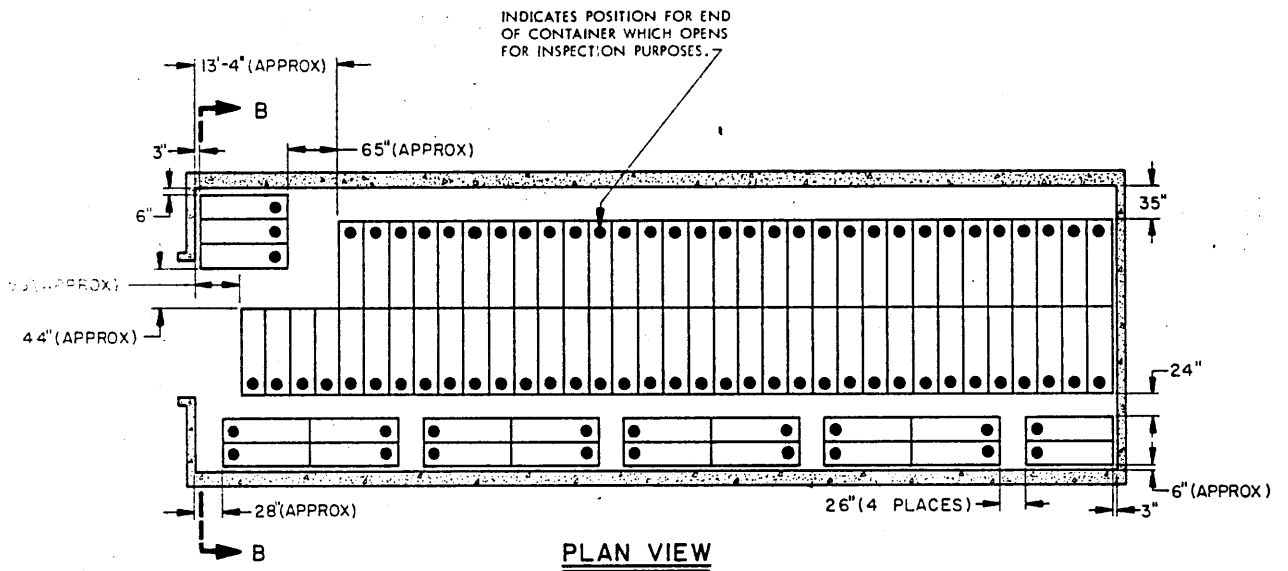
**ISOMETRIC VIEW**

60' IGLOO

**GENERAL NOTES**

- A. FOR DETAIL OF CONTAINER SEE DRAWING NO. 9212614.  
 CONTAINER DIMENSIONS -----91-11/16" LONG X 25-11/16" WIDE X 30-5/32" HIGH  
 GROSS WEIGHT -----650 POUNDS (APPROX)
- B. AISLE DIMENSIONS SHOWN HEREIN MAY BE ADJUSTED TO SUIT LOCAL CONDITIONS AND/OR AVAILABLE MATERIALS HANDLING EQUIPMENT (MHE); HOWEVER, A TWENTY-FOUR (24) INCH (MINIMUM) ACCESS AISLE IS REQUIRED AT OPENING END OF CONTAINER.
- C. CONTAINERS MUST BE STORED SO THAT THEY WILL NOT CONTACT WALLS OF A MAGAZINE.

**IGLOO STORAGE**

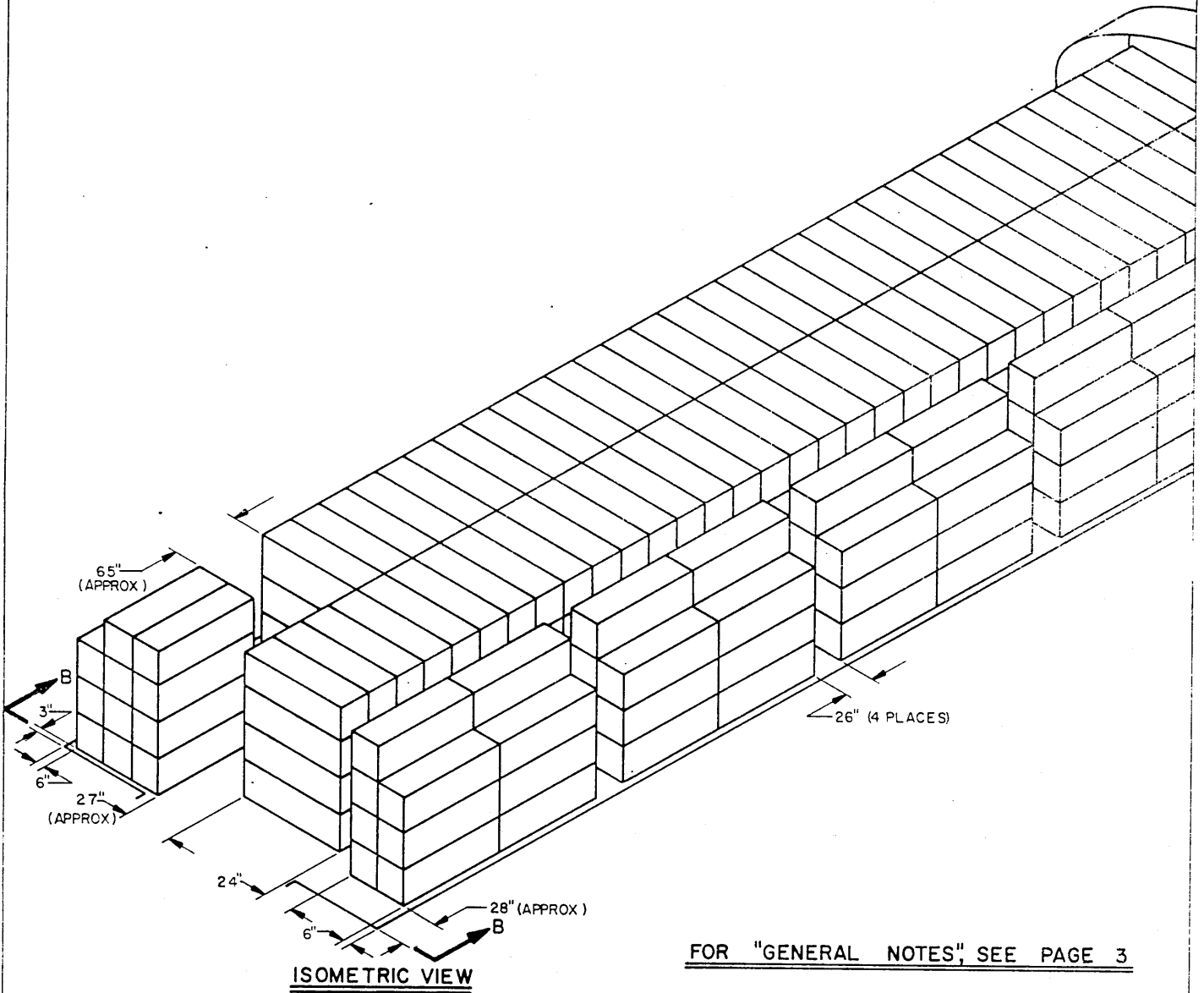


STRADLEY STORAGE

STORAGE AS SHOWN

80' STRADLEY

<u>ITEM</u>	<u>QUANTITY</u>
ANTIPERSONNEL MINE -----	338



FOR "GENERAL NOTES", SEE PAGE 3

STRADLEY STORAGE

