

APPROVED  
 BUREAU OF EXPLOSIVES  
*A. F. Grossmuck*  
 MILITARY ASSISTANT  
 DATE 5/10/66

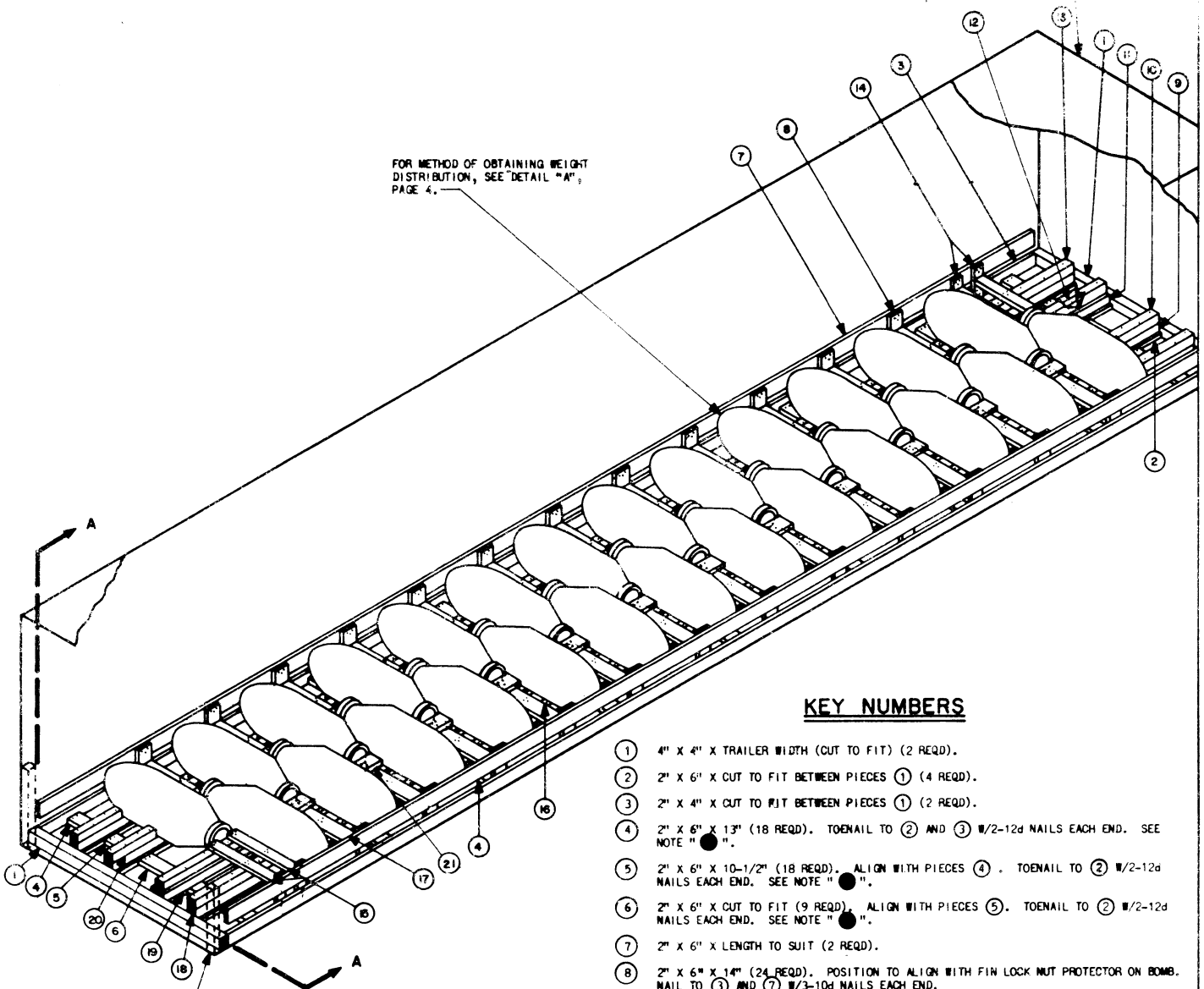
# LOADING & BRACING IN VAN TYPE TRAILER OF BOMB WITHOUT SHIPPING BANDS, GP, 1000 LB, AN-M65A1BI

DESIGNER <b>JES.</b>	PREPARED BY <i>XP/RMA</i>	APPROVED BY <i>PJS</i>	SUBMITTED BY <i>B. B. Abrams</i>	
CHECKED BY <i>DBA/RNA</i>	SEC. APPROVED BY <i>L. S.</i>		EXAMINED AND APPROVED <i>Ralph Hall</i>	
REVISIONS			APPROVED BY CHIEF OF COMMODITY GENERAL U. S. ARMY MATERIEL COMMAND	
			<i>Paul [Signature]</i>	
			U. S. ARMY MATERIEL COMMAND	
			1 JUNE 1966	
			CLASS	DIVISION
			19	48
			REMARKS	FILE
			4057	11B1002

DO NOT SCALE

FOR ROUND FRONT TRAILERS, SEE  
"FORWARD BLOCKING" DETAIL, PAGE 4.

FOR METHOD OF OBTAINING WEIGHT  
DISTRIBUTION, SEE "DETAIL "A";  
PAGE 4.



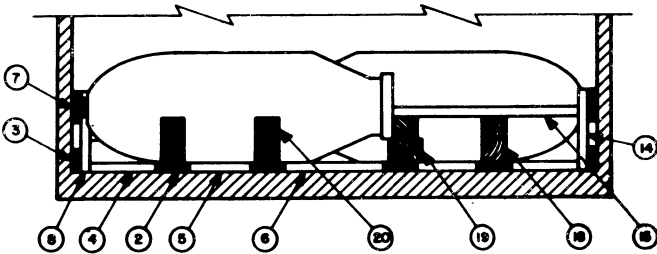
REAR CORNER POST OF  
TRAILER. SEE GENERAL  
NOTE "D", PAGE 3.

**ISOMETRIC VIEW**

40'-0" LONG X 7'-6" WIDE  
(INSIDE DIMENSION) TRAILER.

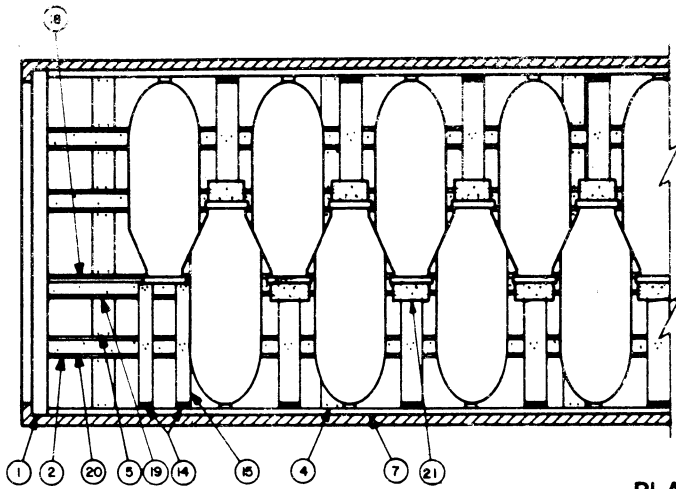
**KEY NUMBERS**

- ① 4" X 4" X TRAILER WIDTH (CUT TO FIT) (2 REQD).
- ② 2" X 6" X CUT TO FIT BETWEEN PIECES ① (4 REQD).
- ③ 2" X 4" X CUT TO FIT BETWEEN PIECES ① (2 REQD).
- ④ 2" X 6" X 13" (18 REQD). TOENAIL TO ② AND ③ 1/2-12d NAILS EACH END. SEE NOTE "A".
- ⑤ 2" X 6" X 10-1/2" (18 REQD). ALIGN WITH PIECES ④. TOENAIL TO ② 1/2-12d NAILS EACH END. SEE NOTE "A".
- ⑥ 2" X 6" X CUT TO FIT (9 REQD). ALIGN WITH PIECES ⑤. TOENAIL TO ② 1/2-12d NAILS EACH END. SEE NOTE "A".
- ⑦ 2" X 6" X LENGTH TO SUIT (2 REQD).
- ⑧ 2" X 6" X 14" (24 REQD). POSITION TO ALIGN WITH FIN LOCK NUT PROTECTOR ON BOMB. NAIL TO ③ AND ⑦ 1/3-10d NAILS EACH END.
- ⑨ BLOCK, 4" X 4" X 26" (20" MIN) (2 REQD). SEE BLOCK "A" DETAIL, PAGE 4. CENTER ON WIDTH OF PIECE ② AND NAIL 1/4-40d NAILS IN TOP.
- ⑩ 4" X 4" X LENGTH TO SUIT (15" MIN) (2 REQD). NAIL TO ⑨ 1/4-40d NAILS IN TOP.
- ⑪ BLOCK, 4" X 4" X 42" REF (2 REQD). SEE BLOCK "A" DETAIL, PAGE 4. CENTER ON WIDTH OF PIECE ② AND NAIL 1/4-40d NAILS ON TOP.
- ⑫ 2" X 4" X 37" REF (1 REQD). NAIL TO SIDE OF PIECE ⑪ 1/6-12d NAILS.
- ⑬ 4" X 4" X LENGTH TO SUIT (2 REQD). NAIL TO ⑪ 1/4-40d NAILS IN TOP.
- ⑭ 2" X 4" X 14" (4 REQD). ALIGN WITH FIN LOCK NUT PROTECTOR ON BOMB. NAIL TO ③ AND ⑦ 1/3-10d NAILS EACH END.
- ⑮ 2" X 4" X CUT TO FIT BETWEEN FIN LOCK NUT PROTECTOR AND PIECE ⑭ (4 REQD). NAIL TO ⑬ AND/OR ⑭ 1/3-12d NAILS EACH JOINT.
- ⑯ BLOCK, 4" X 4" X 24-3/4" (48 REQD). SEE BLOCK "B" DETAIL, PAGE 4. CENTER ON WIDTH OF PIECE ② AND NAIL 1/1-12d NAIL IN BEVELED END AND 2-40d NAILS IN TOP.
- ⑰ 2" X 6" X CUT TO FIT BETWEEN FIN LOCK NUT PROTECTOR AND PIECE ⑯ (24 REQD). NAIL TO ⑮ 1/3-12d NAILS EACH JOINT.
- ⑱ BLOCK, 4" X 4" X CUT TO FIT BETWEEN BOMB AND PIECE ① (20" MIN) (4 REQD). SEE BLOCK "A" DETAIL, PAGE 4. CENTER ON WIDTH OF PIECE ② AND NAIL 1/4-40d NAILS IN TOP.
- ⑲ 2" X 4" X LENGTH TO SUIT (1 REQD). NAIL TO SIDE OF PIECE ⑱ 1/6-12d NAILS.
- ⑳ 4" X 4" X LENGTH TO SUIT (15" MIN) (4 REQD). NAIL TO ⑱ 1/4-40d NAILS IN TOP.
- ㉑ 2" X 6" X 11" (24 REQD). POSITION AGAINST FIN LOCK NUT PROTECTOR AND NAIL TO ⑰ 1/3-10d NAILS.

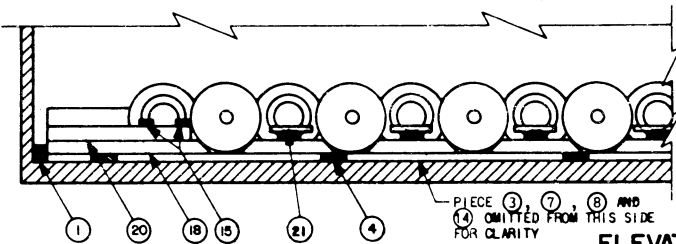
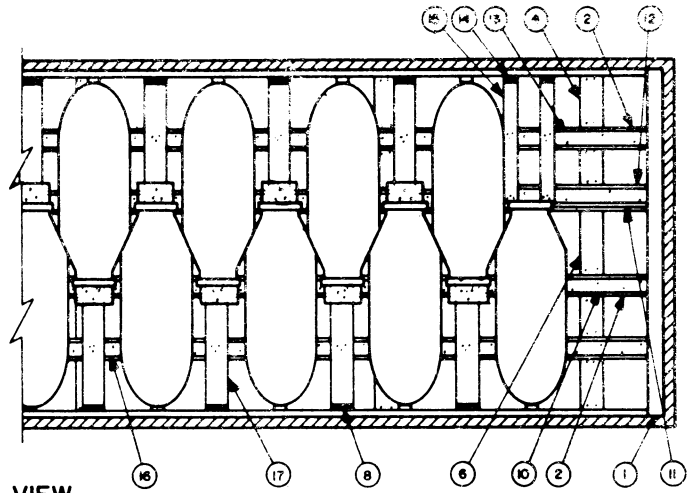


**SECTION A-A**

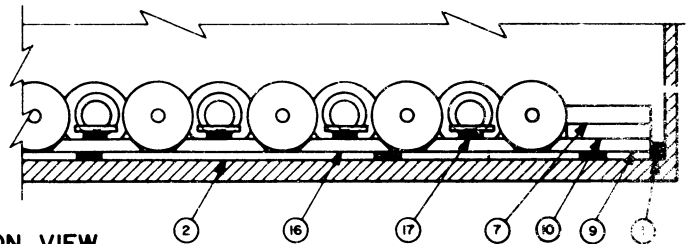
NOTE: WHEN LOADING A TRAILER WITH WOOD OR WOOD AND METAL FLOOR, PIECE ② MAY BE NAILED TO TRAILER FLOOR 1/1-12d NAIL EVERY 12". OMIT PIECES ④, ⑤ AND ⑥.



**PLAN VIEW**



**ELEVATION VIEW**



**BILL OF MATERIAL**

LUMBER	LINEAL FEET	BOARD FEET
2" X 4"	100	67
2" X 6"	395	395
4" X 4"	152	203
NAILS	NO. REQD	POUNDS
10d (3")	240	4
12d (3-1/4")	408	7
40d (5")	160	9-1/2

**GENERAL NOTES**

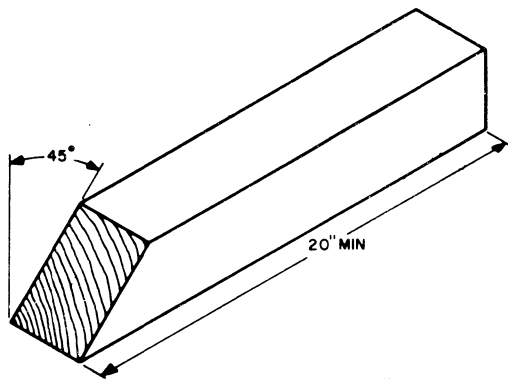
- A. LOAD AS SHOWN IS BASED ON A VAN TYPE TRAILER 40'-0" LONG X 7'-6" WIDE (INSIDE DIMENSION) WITH WOOD, WOOD AND METAL, OR METAL FLOOR. SEE "TRAILER CAPACITY" CHART ON PAGE 4 FOR DATA PERTAINING TO THE LOADING OF TRAILERS OF OTHER LENGTHS AND WIDTHS.
- B. DETAIL OF BOMB:  
 DIMENSIONS ——— 18.75" DIAMETER X 53.95" LONG.  
 GROSS WEIGHT ——— 1,128 POUNDS (APPROX).
- C. NOTICE: A SHIPMENT WILL BE POSITIONED IN THE TRAILER CONSISTENT WITH STATE WEIGHT LAWS. THE NUMBER OF BOMBS MAY BE ADJUSTED TO FIT THE DIMENSIONS OF THE VEHICLE CONCERNED OR THE QUANTITY TO BE SHIPPED; HOWEVER, THE APPROVED METHODS CONTAINED HEREIN MUST BE FOLLOWED FOR BLOCKING, BRACING AND STAYING OF THIS ITEM.
- D. FOR TRAILER NOT EQUIPPED WITH REAR CORNER POSTS, REAR BLOCKING MUST CONTACT CLOSED DOORS.
- E. THIS ITEM IS AN ICC CLASS "A" EXPLOSIVE.

**MATERIAL SPECIFICATIONS**

LUMBER: ——— SEE TM 715-5500-1; DUNNAGE LUMBER, FED SPEC MM-L-751.  
 NAILS: ——— COMMON, CEMENT COATED, FED SPEC FF-N-105.  
 ALT: ANNULAR-RING TYPE NAIL OF SAME SIZE.

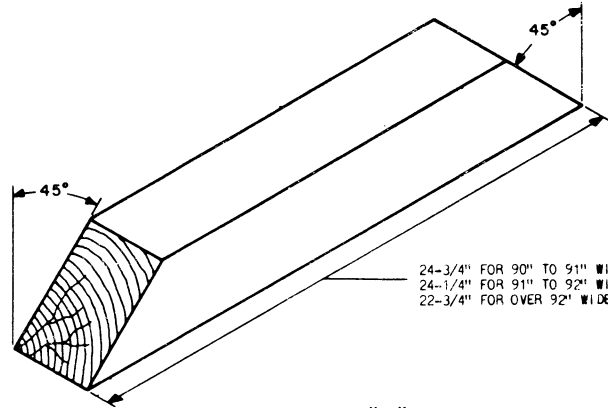
**LOAD AS SHOWN**

ITEM	QUANTITY	WEIGHT (APPROX)
1,000 LB BOMB	26	29,328 LBS
DUNNAGE		1,684 LBS
<b>TOTAL WEIGHT</b>		<b>31,012 LBS</b>



**BLOCK "A"**

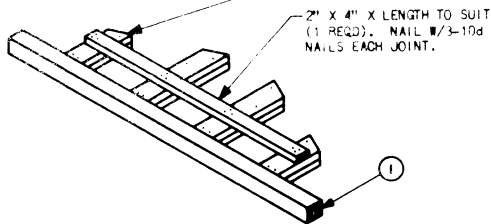
4" X 4" MATERIAL



**BLOCK "B"**

4" X 4" MATERIAL

2" X 6" X CUT TO FIT (DOUBLED) (4 REQD). LAMINATE W/10d NAILS. TOENAIL TO ① W/2-12d NAILS. POSITION AGAINST STRONG POINTS IN TRAILER FRONT WALL.

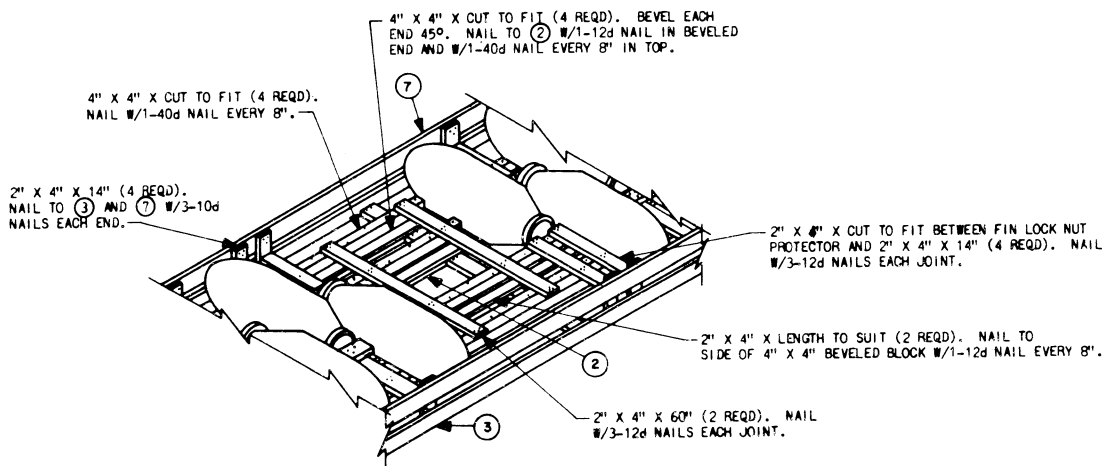


**FORWARD BLOCKING**

FOR ROUND FRONT TRAILER

**TRAILER CAPACITY**

TRAILER LENGTH	90" TO 91" WIDTH		91" TO 92" WIDTH		OVER 92" WIDTH	
	MAX BOMBS	APPROX LADING LENGTH	MAX BOMBS	APPROX LADING LENGTH	MAX BOMBS	APPROX LADING LENGTH
40'	26	35'-5"	27	36'-3"	28	35'-11"
38'	25	34'-1"	25	33'-7"	26	33'- 4"
35'	23	31'-5"	23	30'-11"	24	30'-10"
33'	21	28'-8"	21	28'-3"	22	28'- 3"
30'	19	26'-0"	19	25'-7"	20	25'- 9"



**DETAIL "A"**

METHOD OF OBTAINING WEIGHT DISTRIBUTION.