

APPROVED
 BUREAU OF EXPLOSIVES
H. F. Brassmuck
 MILITARY ASSISTANT
 DATE 5/10/66

LOADING & BRACING IN VAN TYPE TRAILER OF BOMB WITHOUT SHIPPING BANDS, GP, 500 LB, AN-M64A1BI

| | | | |
|-------------------------|-------------------------------|--------------------|---|
| DRAFTSMAN JES | PROJ ENG <i>XP/RCM</i> | APSA <i>PJS</i> | SUBMITTED <i>B. B. Abrams</i> |
| CHECKER <i>WBA</i> | SMC, AMMUNITION <i>RHA</i> | | COMMANDING OFFICER, SAVANNAH ARMY DEPOT |
| REVISIONS | | | EXAMINED AND APPROVED <i>Ralph Hall</i> |
| | | | AMMUNITION PROCUREMENT & SUPPLY AGENCY |
| | | | APPROVED BY ORDER OF COMMANDING GENERAL U. S. ARMY MATERIEL COMMAND <i>Paul [Signature]</i> |
| | | | U. S. ARMY MATERIEL COMMAND |
| | | | 1 JUNE 1966 |
| | | | CLASS DIVISION DRAWING FILE |
| | | | 19 48 4056 IIB1001 |

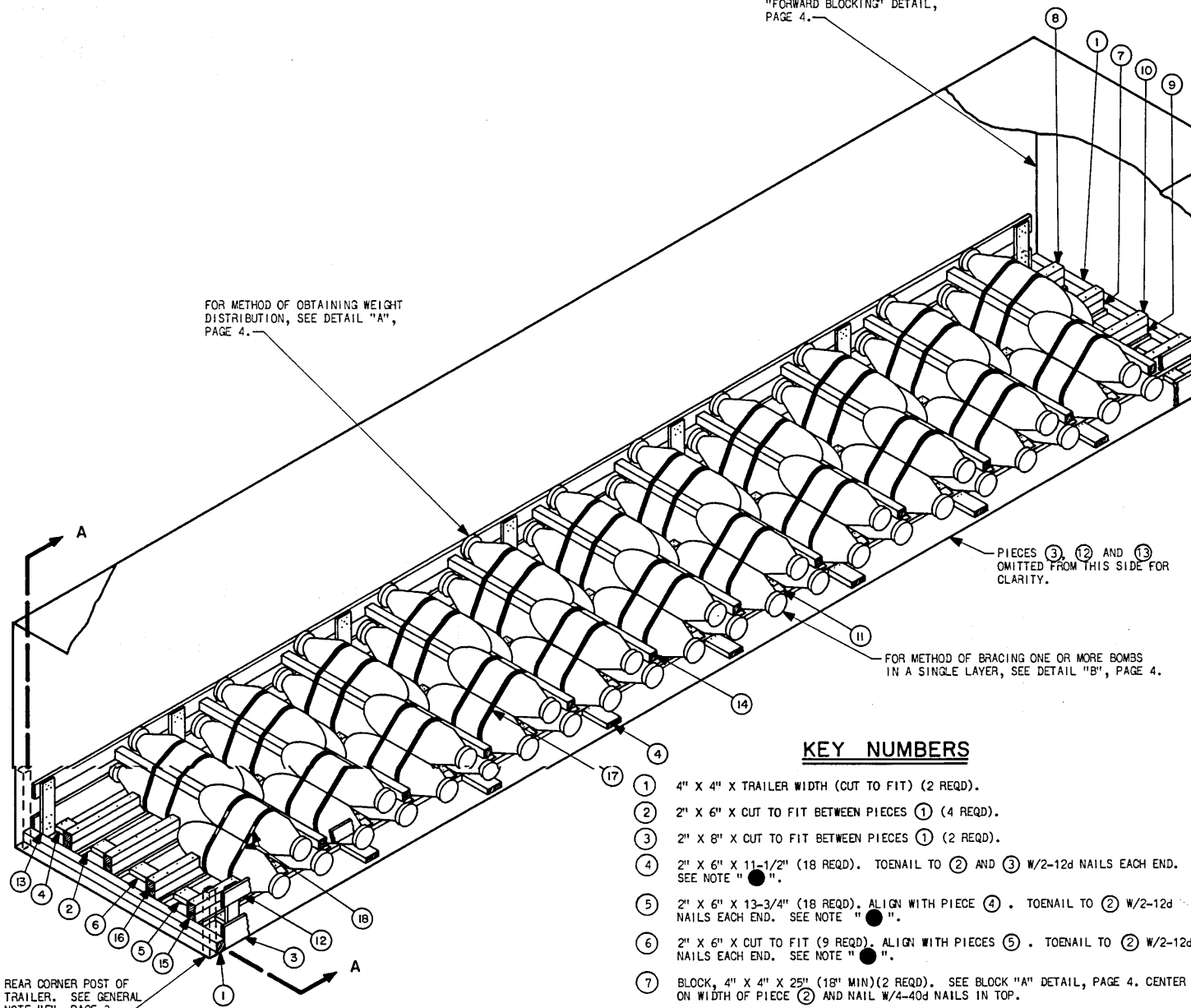
DO NOT SCALE

FOR ROUND FRONT TRAILER, SEE
"FORWARD BLOCKING" DETAIL,
PAGE 4.

FOR METHOD OF OBTAINING WEIGHT
DISTRIBUTION, SEE DETAIL "A",
PAGE 4.

PIECES ③, ⑫ AND ⑬
OMITTED FROM THIS SIDE FOR
CLARITY.

FOR METHOD OF BRACING ONE OR MORE BOMBS
IN A SINGLE LAYER, SEE DETAIL "B", PAGE 4.



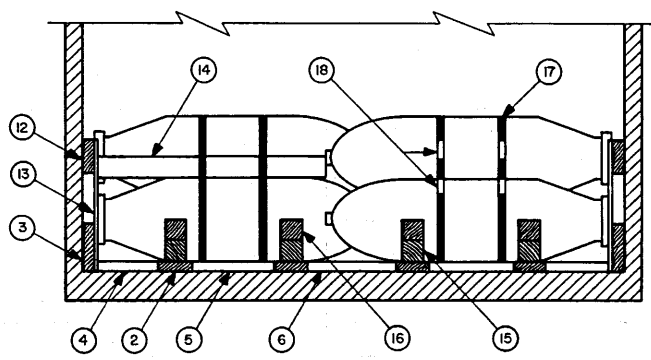
REAR CORNER POST OF
TRAILER, SEE GENERAL
NOTE "E", PAGE 3.

ISOMETRIC VIEW

40'-0" LONG X 7'-6" WIDE
(INSIDE DIMENSION) TRAILER.

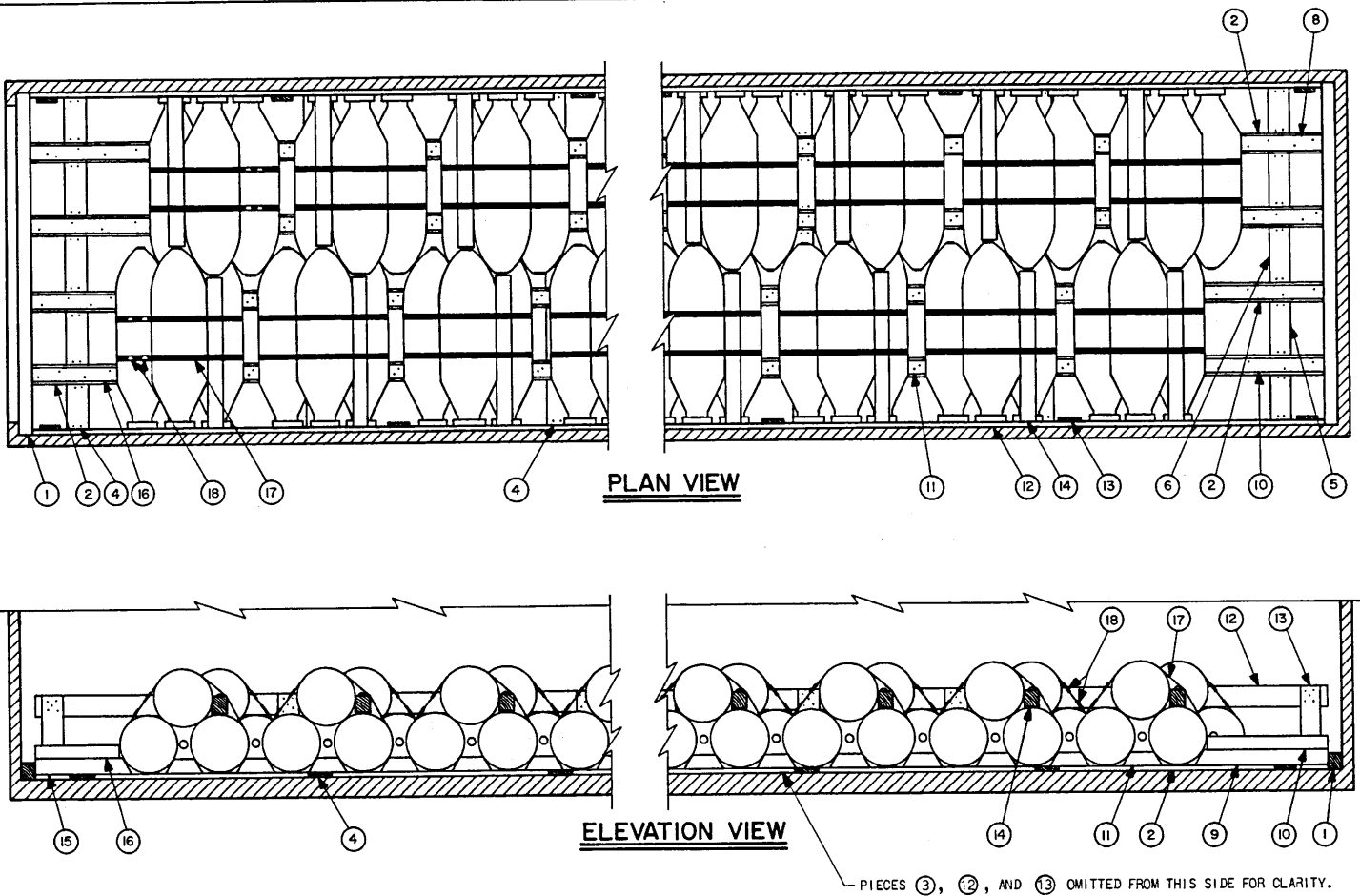
KEY NUMBERS

- ① 4" X 4" X TRAILER WIDTH (CUT TO FIT) (2 REQD).
- ② 2" X 6" X CUT TO FIT BETWEEN PIECES ① (4 REQD).
- ③ 2" X 8" X CUT TO FIT BETWEEN PIECES ① (2 REQD).
- ④ 2" X 6" X 11-1/2" (18 REQD). TOENAIL TO ② AND ③ W/2-12d NAILS EACH END. SEE NOTE "●".
- ⑤ 2" X 6" X 13-3/4" (18 REQD). ALIGN WITH PIECE ④. TOENAIL TO ② W/2-12d NAILS EACH END. SEE NOTE "●".
- ⑥ 2" X 6" X CUT TO FIT (9 REQD). ALIGN WITH PIECES ⑤. TOENAIL TO ② W/2-12d NAILS EACH END. SEE NOTE "●".
- ⑦ BLOCK, 4" X 4" X 25" (18" MIN) (2 REQD). SEE BLOCK "A" DETAIL, PAGE 4. CENTER ON WIDTH OF PIECE ② AND NAIL W/4-40d NAILS IN TOP.
- ⑧ 4" X 4" X LENGTH TO SUIT (15" MIN) (2 REQD). NAIL TO ⑦ W/4-40d NAILS IN TOP.
- ⑨ BLOCK, 4" X 4" X 34-1/2" REF (2 REQD). SEE BLOCK "A" DETAIL, PAGE 4. CENTER ON WIDTH OF PIECE ② AND NAIL W/4-40d NAILS IN TOP.
- ⑩ 4" X 4" X LENGTH TO SUIT (2 REQD). NAIL TO ⑨ W/4-40d NAILS IN TOP.
- ⑪ BLOCK, 4" X 4" X 10-3/4" (84 REQD). SEE BLOCK "B" DETAIL, PAGE 4. NAIL TO ② W/1-12d NAIL IN BEVELED END AND 2-40d NAILS IN TOP.
- ⑫ 2" X 6" X LENGTH TO SUIT (2 REQD).
- ⑬ 1" X 6" X 22" (14 REQD). NAIL TO ③ AND ⑫ W/5-6d NAILS EACH END.
- ⑭ 4" X 4" X 39" REF (22 REQD).
- ⑮ BLOCK, 4" X 4" X CUT TO FIT BETWEEN BOMB AND PIECE ① (18" MIN) (4 REQD). SEE BLOCK "A" DETAIL, PAGE 4. CENTER ON WIDTH OF PIECE ② AND NAIL W/4-40d NAILS IN TOP.
- ⑯ 4" X 4" X LENGTH TO SUIT (15" MIN) (4 REQD). NAIL TO ⑮ W/4-40d NAILS IN TOP.
- ⑰ STEEL STRAPPING, 1-1/4" X .035" X 9'-0" (44 REQD). SEAL W/2 SEALS AND 2 CRIMPS PER SEAL.
- ⑱ SEALS FOR 1-1/4" STRAPPING (88 REQD).



SECTION A-A

NOTE "●":
WHEN LOADING A TRAILER WITH WOOD OR WOOD AND METAL FLOOR, PIECE ② MAY
BE NAILED TO TRAILER FLOOR W/1-12d NAIL EVERY 12". OMIT PIECES ④, ⑤
AND ⑥.



PLAN VIEW

ELEVATION VIEW

PIECES 3, 12, AND 13 OMITTED FROM THIS SIDE FOR CLARITY.

BILL OF MATERIAL

| LUMBER | LINEAL FEET | BOARD FEET |
|---------------------------------|-------------|------------|
| 1" X 6" | 26 | 13 |
| 2" X 6" | 282 | 282 |
| 2" X 8" | 156 | 208 |
| 4" X 4" | 200 | 267 |
| NAILS | NO. REQD | POUNDS |
| 6d (2") | 140 | 1 |
| 12d (3-1/4") | 264 | 4-1/2 |
| 40d (5") | 236 | 14 |
| STEEL STRAPPING, 1-1/4" X .035" | 396' REQD | 57 LBS |
| SEALS FOR 1-1/4" STRAPPING | 88 REQD | 5 LBS |

GENERAL NOTES

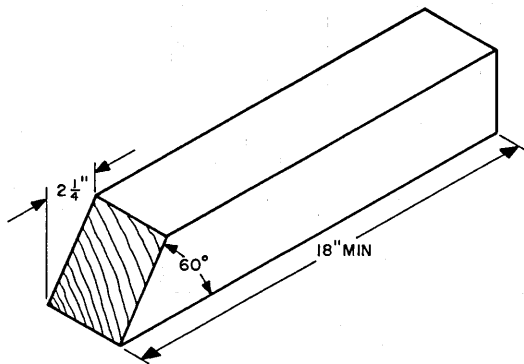
- A. LOAD AS SHOWN IS BASED ON A VAN TYPE TRAILER 40'-0" LONG X 7'-6" WIDE (INSIDE DIMENSION) WITH WOOD, WOOD AND METAL, OR METAL FLOOR. SEE "TRAILER CAPACITY" CHART ON PAGE 4 FOR DATA PERTAINING TO THE LOADING OF TRAILERS OF OTHER LENGTHS AND WIDTHS.
- B. DETAIL OF BOMB:
 DIMENSIONS _____ 14.125" DIAMETER X 47.52" LONG.
 GROSS WEIGHT _____ 574 POUNDS (APPROX).
- C. NOTICE: A SHIPMENT WILL BE POSITIONED IN THE TRAILER CONSISTENT WITH STATE WEIGHT LAWS. THE NUMBER OF BOMBS MAY BE ADJUSTED TO FIT THE DIMENSIONS OF THE VEHICLE CONCERNED OR THE QUANTITY TO BE SHIPPED; HOWEVER, THE APPROVED METHOD CONTAINED HEREIN MUST BE FOLLOWED FOR BLOCKING, BRACING AND STAYING OF THIS ITEM.
- D. ALL 1-1/4" STRAPPING WILL BE SEALED WITH TWO (2) SEALS AND TWO (2) CRIMPS PER SEAL.
- E. FOR TRAILERS NOT EQUIPPED WITH REAR CORNER POSTS, REAR BLOCKING MUST CONTACT CLOSED DOORS.
- F. THIS ITEM IS AN ICC CLASS "A" EXPLOSIVE.

MATERIAL SPECIFICATIONS

- LUMBER: _____ SEE TM 715-5500-1; DUNNAGE LUMBER, FED SPEC MM-L-751.
- NAILS: _____ COMMON, CEMENT COATED, FED SPEC FF-N-105.
 ALT: ANNULAR-RING TYPE NAIL OF SAME SIZE.
- STRAPPING, STEEL: _____ TYPE I, CLASS "A" OR "C", FED SPEC QQ-S-781.

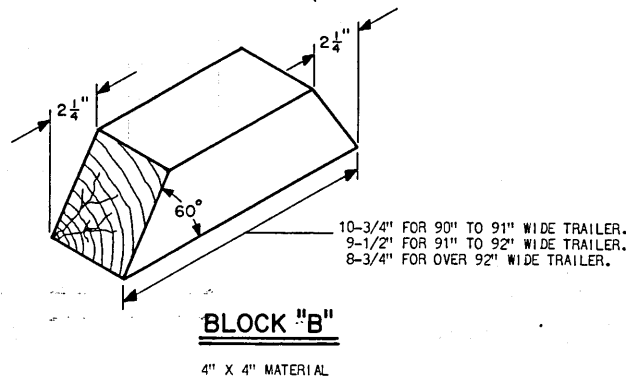
LOAD AS SHOWN

| ITEM | QUANTITY | WEIGHT (APPROX) |
|--------------|----------|-----------------|
| 500 LB BOMB | 66 | 37,884 LBS |
| DUNNAGE | | 2,007 LBS |
| TOTAL WEIGHT | | 39,891 LBS |



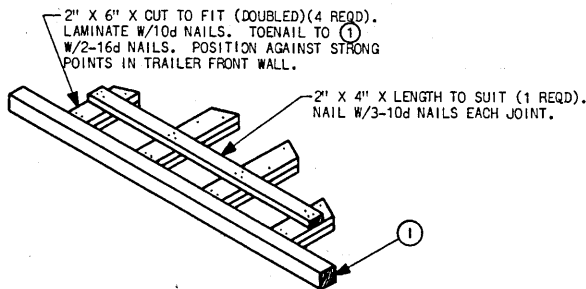
BLOCK "A"

4" X 4" MATERIAL



BLOCK "B"

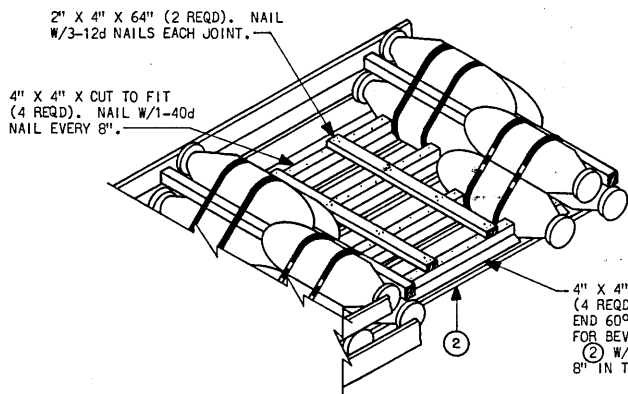
4" X 4" MATERIAL



FORWARD BLOCKING

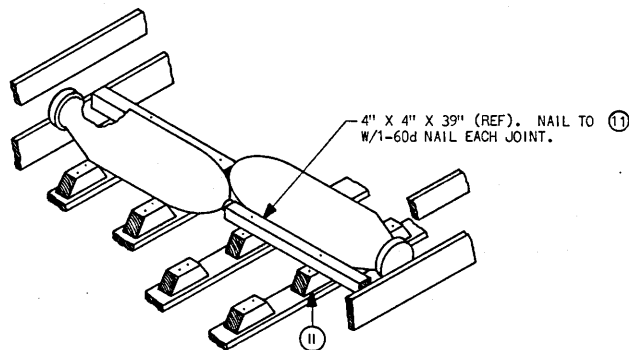
FOR ROUND FRONT TRAILERS

| TRAILER LENGTH | 90" TO 91" WIDTH | | 91" TO 92" WIDTH | | OVER 92" WIDTH | |
|----------------|------------------|----------------------|------------------|----------------------|----------------|----------------------|
| | MAX BOMBS | APPROX LADING LENGTH | MAX BOMBS | APPROX LADING LENGTH | MAX BOMBS | APPROX LADING LENGTH |
| 40' | 66 | 35'-3" | 66 | 32'-9" | 66 | 30'-7" |
| 38' | 62 | 33'-8" | 66 | 32'-9" | 66 | 30'-7" |
| 35' | 57 | 31'-4" | 61 | 30'-7" | 66 | 30'-7" |
| 33' | 54 | 28'-11" | 56 | 28'-5" | 61 | 28'-6" |
| 30' | 48 | 25'-9" | 50 | 25'-5" | 55 | 25'-9" |



DETAIL "A"

METHOD OF OBTAINING WEIGHT DISTRIBUTION.



DETAIL "B"

METHOD OF BRACING ONE OR MORE BOMBS, SINGLE LAYER.

NOTE: PIECE (11) MUST BE AT LEAST 10' LONG TO PROVIDE CLEARANCE BETWEEN BOMBS FOR 4" X 4" LATERAL BRACE.