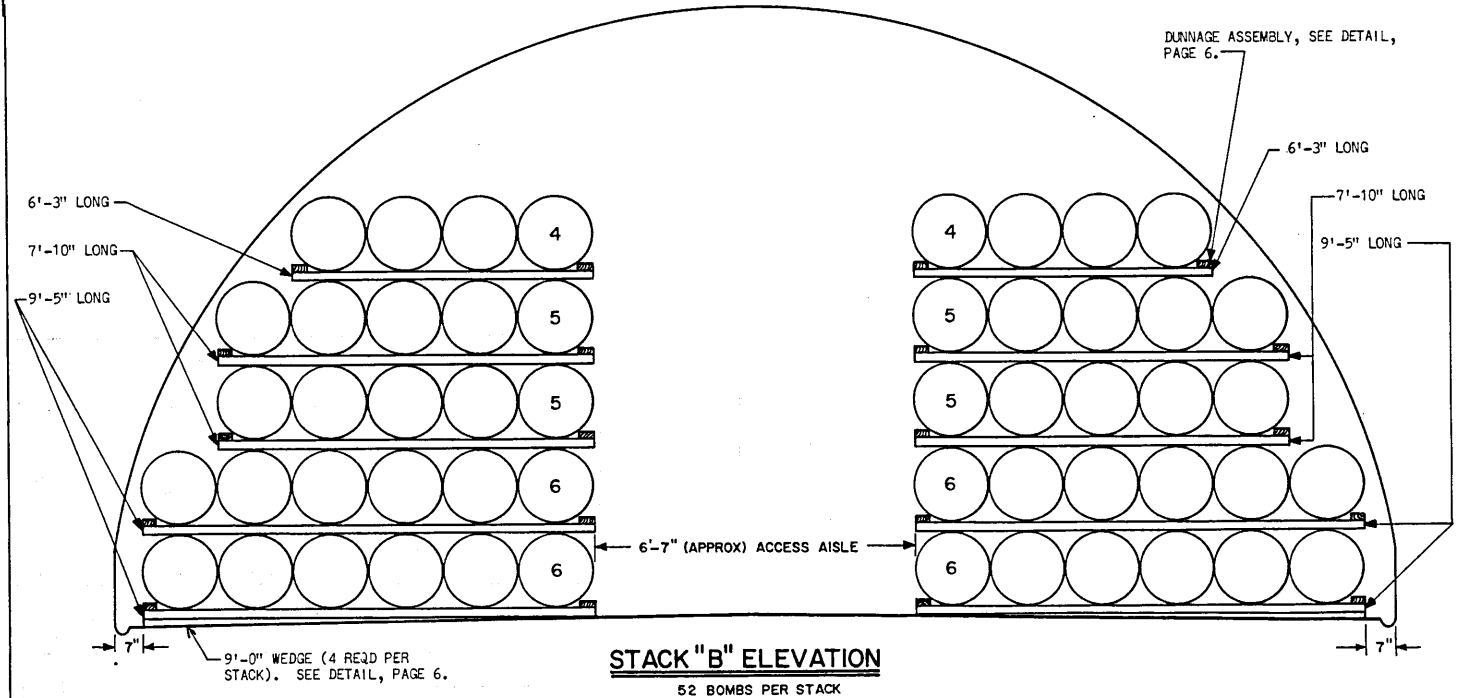
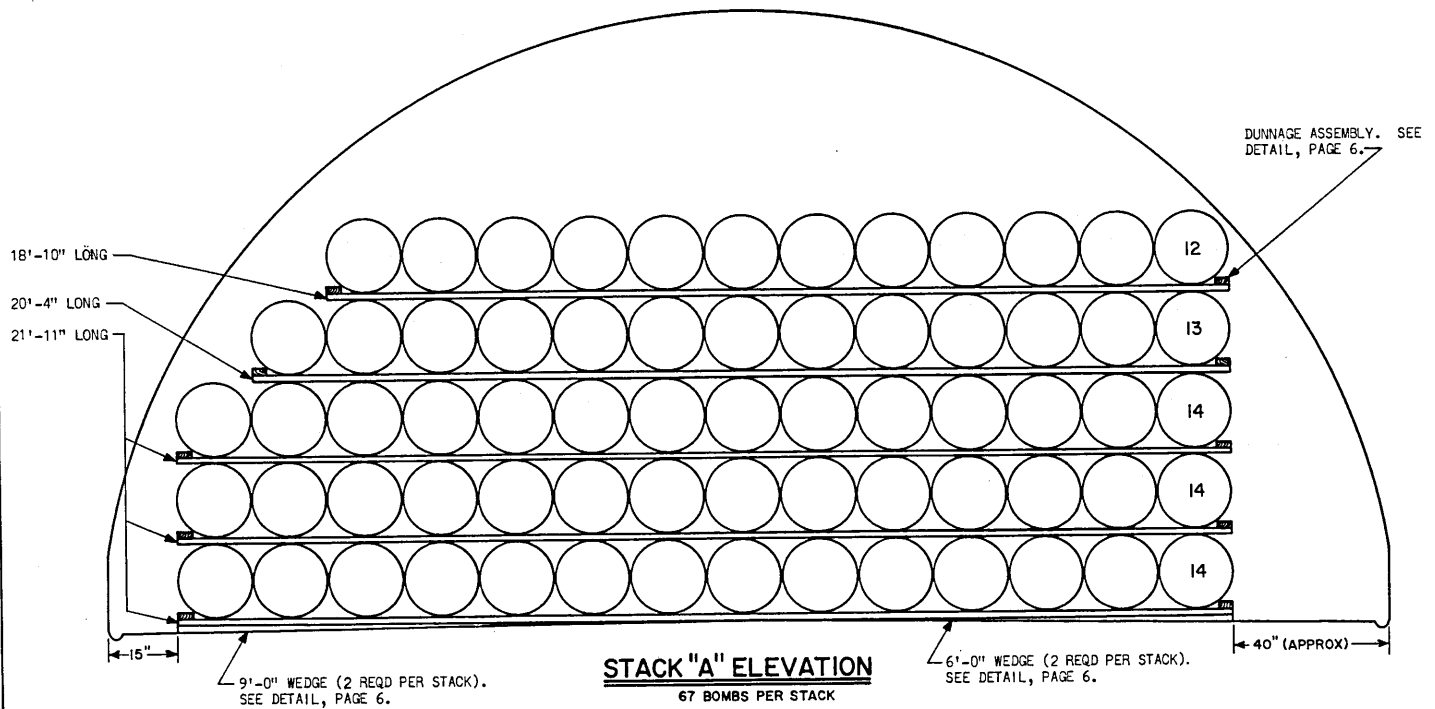
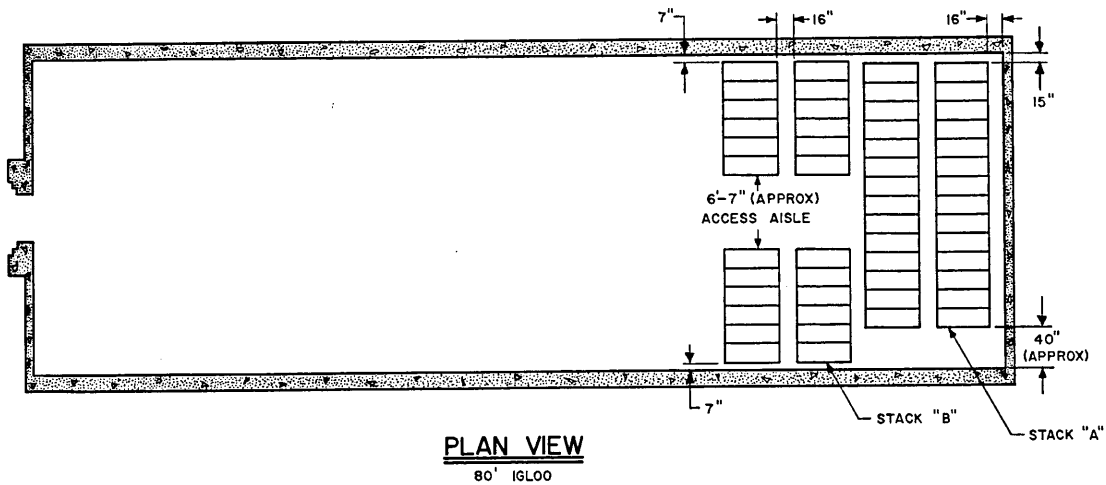
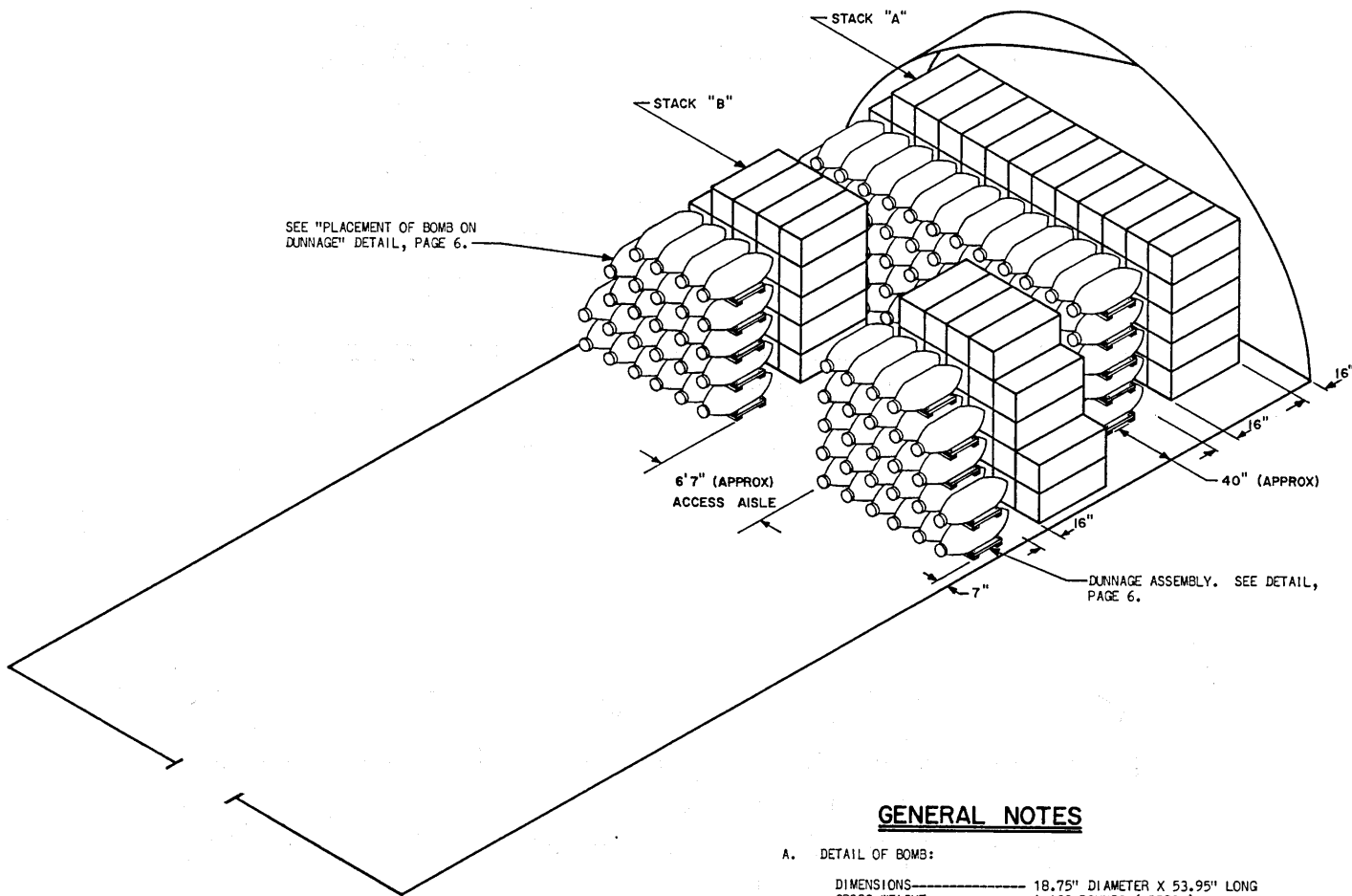


# STORAGE IN IGLOO AND STRADLEY MAGAZINES OF BOMB WITHOUT SHIPPING BANDS, GP, 1000 LB, AN-M65AIBI

DRAFTSMAN R. G. M.	PROJ ENG 12 / RC #1	APSA SMEH	SUBMITTED <i>William J. [Signature]</i>	
CHECKER JDS / RHR	SMC ARMO-CTR [Signature]		COMMANDING OFFICER, SAVANNA ARMY DEPOT	
REVISIONS			EXAMINED AND APPROVED <i>Ralph Hall</i>	
			AMMUNITION PROCUREMENT & SUPPLY AGENCY U. S. ARMY MATERIEL COMMAND	
			APPROVED BY ORDER OF COMMANDING GENERAL U. S. ARMY MATERIEL COMMAND <i>[Signature]</i>	
			U. S. ARMY MATERIEL COMMAND	
			9 MAY 1966	
			CLASS	DIVISION
			19	48
			DRAWING	FILE
			4055	I-14B1001

DO NOT SCALE





SEE "PLACEMENT OF BOMB ON DUNNAGE" DETAIL, PAGE 6.

**ISOMETRIC VIEW**

60' IGL00

**GENERAL NOTES**

- A. DETAIL OF BOMB:
  - DIMENSIONS \_\_\_\_\_ 18.75" DIAMETER X 53.95" LONG
  - GROSS WEIGHT \_\_\_\_\_ 1,128 POUNDS (APPROX)
  - EXPLOSIVE WEIGHT \_\_\_\_\_ 595 POUNDS (APPROX)
- B. AISLE DIMENSIONS SHOWN HEREIN MAY BE ADJUSTED TO SUIT LOCAL CONDITIONS AND/OR AVAILABLE MATERIAL HANDLING EQUIPMENT.
- C. STORED BOMBS MUST NOT CONTACT WALLS OF MAGAZINE.
- D. CARE IS TO BE EXERCISED WHEN STORING SO THAT THE EXPLOSIVE LIMIT FOR THE MAGAZINE IS NOT EXCEEDED.

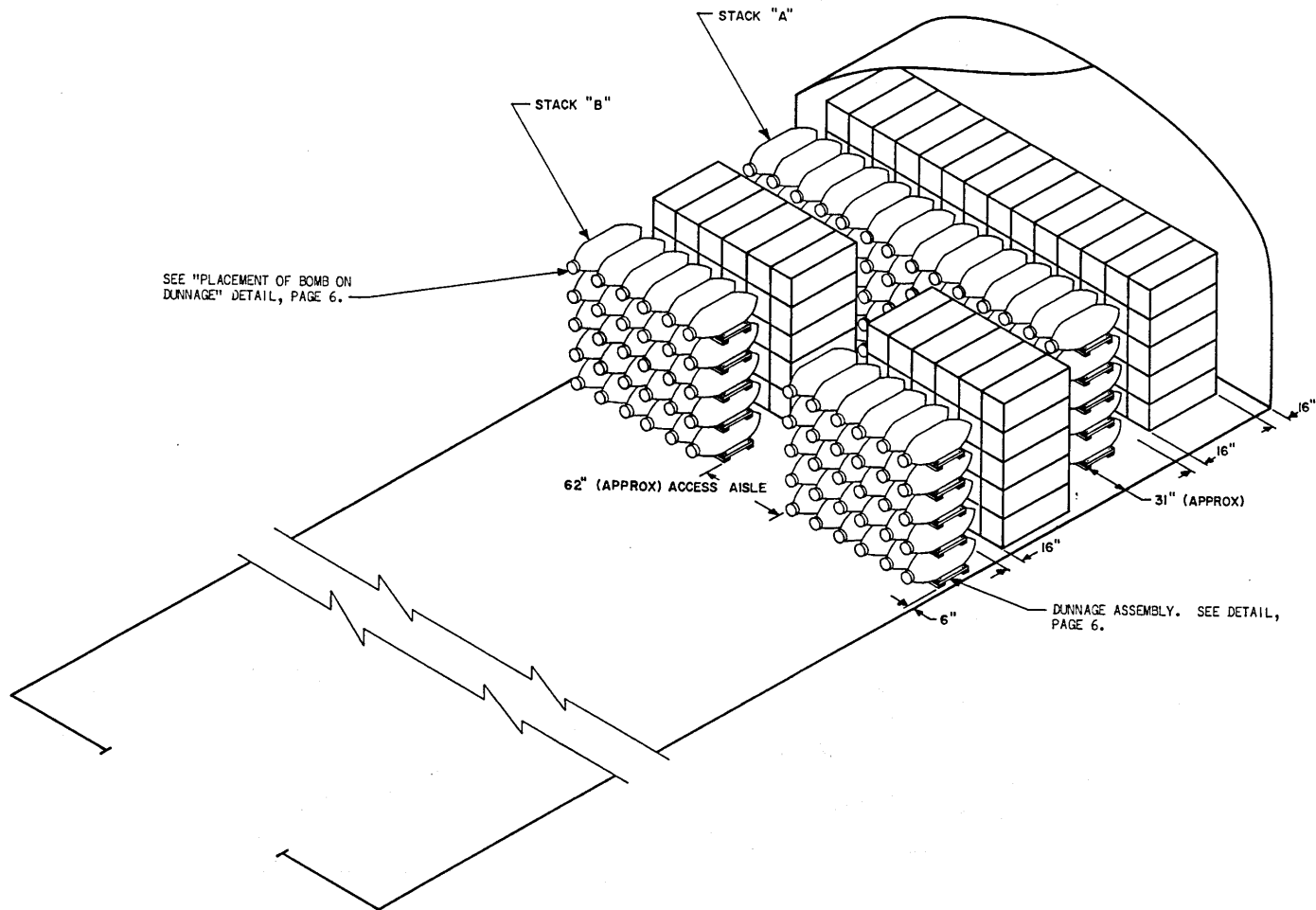
BILL OF MATERIAL (PER STACK)			
STACK	LUMBER	LINEAL FEET	BOARD FEET
"A"	2" X 4"	232	155
"B"	2" X 4"	206	138
	NAILS	NO. REQD	POUNDS
"A"	12d (3-1/4")	60	1
"B"	12d (3-1/4")	120	2
"A"	6'-0" WEDGES - 2 REQD 9'-0" WEDGES - 2 REQD		
"B"	9'-0" WEDGES - 4 REQD		

**MATERIAL SPECIFICATIONS**

LUMBER: SEE TM 715-5500-1; DUNNAGE LUMBER, FED SPEC MM-L-751.  
 NAILS: COMMON, CEMENT COATED, FED SPEC FF-N-105.  
 ALT: ANNULAR-RING TYPE NAIL OF SAME SIZE.

STACK AND STORAGE CAPACITY	60'	80'	80'
	IGL00	IGL00	STRADLEY
MAX NO. OF STACKS	10	13	13
SPACE AT FRONT OF MAGAZINE	28"	62"	50"
NO. OF BOMBS PER TYPE "A" STACK	67	67	70
NO. OF BOMBS PER TYPE "B" STACK	52	52	60
MAX NO. OF BOMBS W/ALL "A" STACKS	670	871	910
MAX NO. OF BOMBS W/ALL "B" STACKS	520	676	780
MAX NO. OF BOMBS PER 250,000 LB LIMIT	420	420	420
MAX NO. OF BOMBS PER 500,000 LB LIMIT	840	840	840





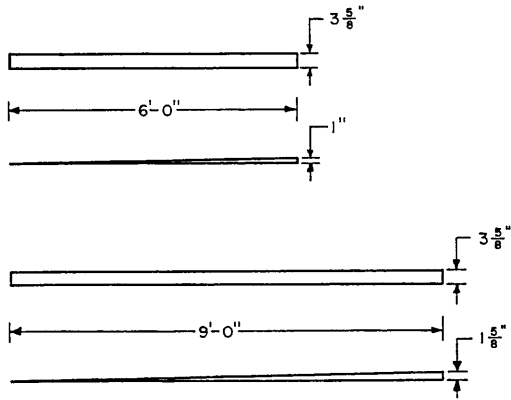
SEE "PLACEMENT OF BOMB ON DURNAGE" DETAIL, PAGE 6.

DURNAGE ASSEMBLY. SEE DETAIL, PAGE 6.

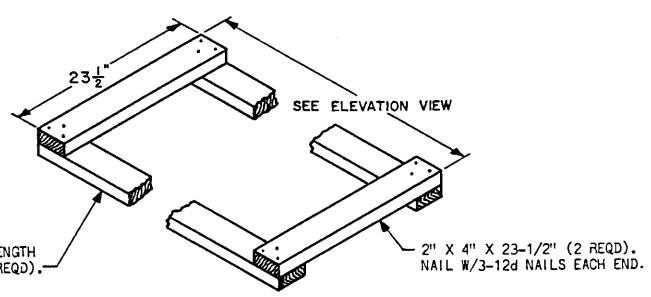
**ISOMETRIC VIEW**

80' STRADLEY

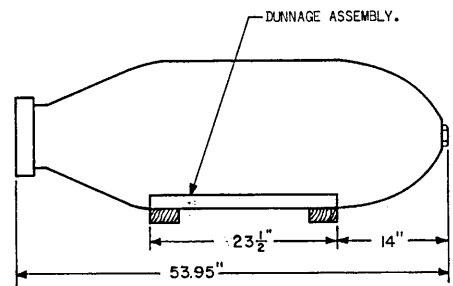
BILL OF MATERIAL (PER STACK)			
STACK	LUMBER	LINEAL FEET	BOARD FEET
"A"	2" X 4"	241	161
"B"	2" X 4"	232	155
	NAILS	NO. REQD	POUNDS
"A"	12d (3-1/4")	60	1
"B"	12d (3-1/4")	120	2
"A"	6'-0" WEDGES - 2 REQD 9'-0" WEDGES - 2 REQD		
"B"	9'-0" WEDGES - 4 REQD		



**WEDGE DETAIL**  
2" X 4" MATERIAL



**DUNNAGE ASSEMBLY**



**PLACEMENT OF BOMB ON DUNNAGE**