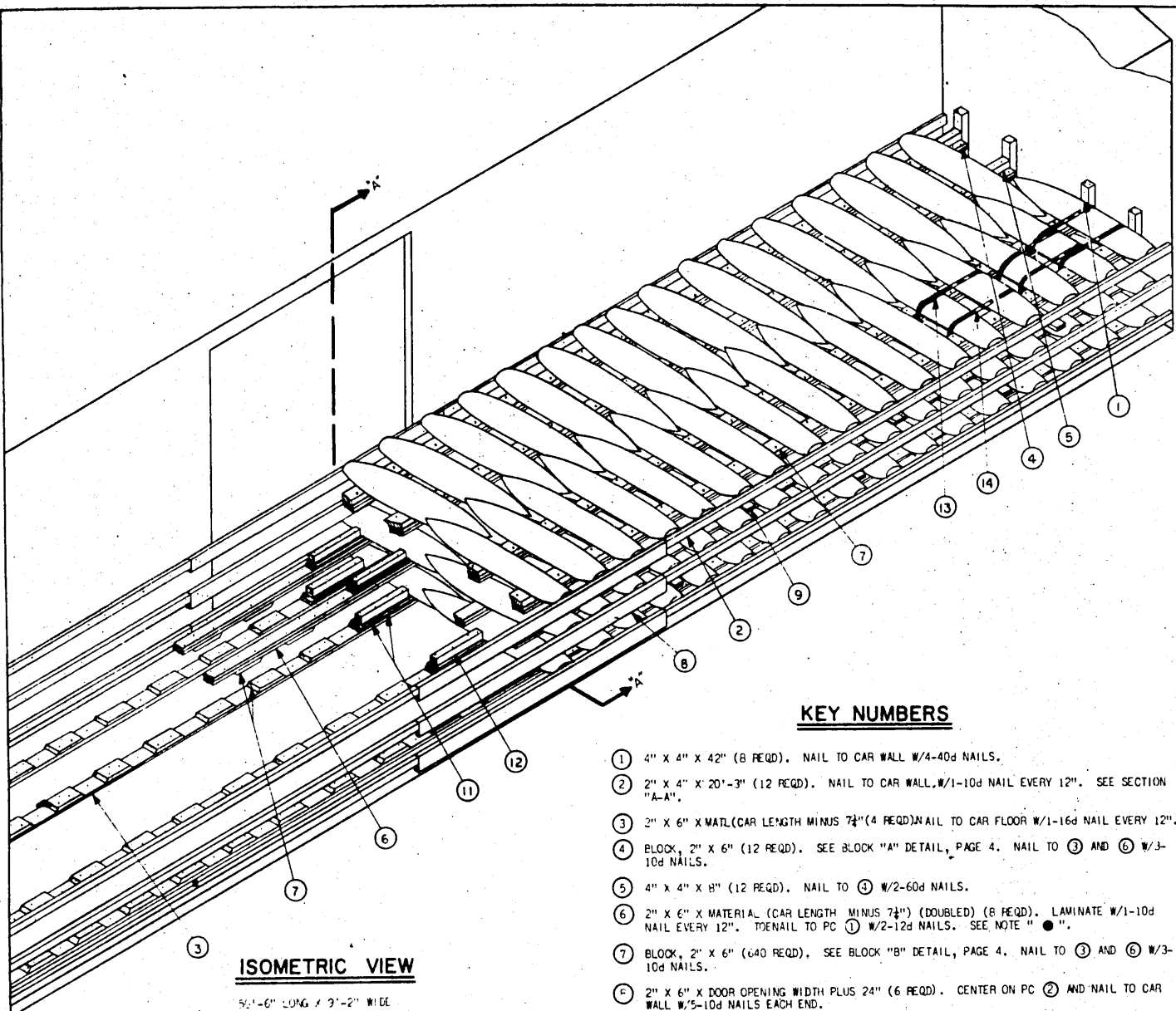


APPROVED
 BUREAU OF EXPLOSIVES
A. F. Grassmick
 MILITARY ASSISTANT
 DATE *11/4/65*

LOADING & BRACING IN BOX CAR OF BOMB, G P, 500 LB, MK 82 MOD I

DRAFTSMAN J.E.S.	PROJ. ENG. <i>CT/PAE</i>	APSA <i>DMZ</i>	SUBMITTED <i>B. S. Abrams</i>	
CHECKER <i>JDS/GUP</i>	SUP. PRNG. CTR. <i>R. J. Quinn</i>		EXAMINED AND APPROVED <i>Ralph Haef</i>	
REVISIONS			<small>ARMY MATERIEL PROCUREMENT & SUPPLY AGENCY</small> <small>APPROVED BY ORDER OF COMMANDING GENERAL,</small> <small>U. S. ARMY MATERIEL COMMAND</small> <i>Paul Klein</i> U. S. ARMY MATERIEL COMMAND 25 APRIL 1966	
			CLASS	DIVISION
			19	48
			DRAWING	FILE
			4050	5B40

DO NOT SCALE



ISOMETRIC VIEW

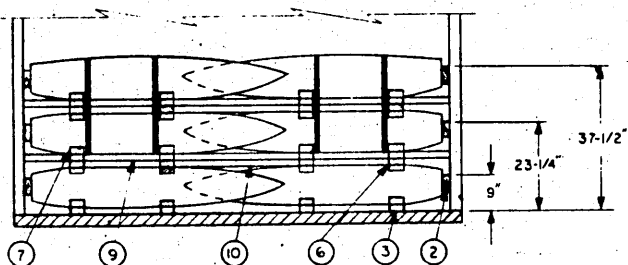
56'-6" LONG X 2'-2" WIDE

KEY NUMBERS

- ① 4" X 4" X 42" (8 REQD). NAIL TO CAR WALL W/4-40d NAILS.
- ② 2" X 4" X 20'-3" (12 REQD). NAIL TO CAR WALL, W/1-10d NAIL EVERY 12". SEE SECTION "A-A".
- ③ 2" X 6" X MATL (CAR LENGTH MINUS 7 1/2") (4 REQD) NAIL TO CAR FLOOR W/1-16d NAIL EVERY 12".
- ④ BLOCK, 2" X 6" (12 REQD). SEE BLOCK "A" DETAIL, PAGE 4. NAIL TO ③ AND ⑥ W/3-10d NAILS.
- ⑤ 4" X 4" X 8" (12 REQD). NAIL TO ④ W/2-60d NAILS.
- ⑥ 2" X 6" X MATERIAL (CAR LENGTH MINUS 7 1/2") (DOUBLED) (8 REQD). LAMINATE W/1-10d NAIL EVERY 12". TO NAIL TO PC ① W/2-12d NAILS. SEE NOTE "●".
- ⑦ BLOCK, 2" X 6" (640 REQD). SEE BLOCK "B" DETAIL, PAGE 4. NAIL TO ③ AND ⑥ W/3-10d NAILS.
- ⑧ 2" X 6" X DOOR OPENING WIDTH PLUS 24" (6 REQD). CENTER ON PC ② AND NAIL TO CAR WALL W/5-10d NAILS EACH END.
- ⑨ 2" X 6" CAR WIDTH (12 REQD). NAIL TO ⑥ W/3-10d NAILS EACH JOINT.
- ⑩ 2" X 6" X 3 1/2" (12 REQD). NAIL TO ⑨ W/6-10d NAILS. SEE SECTION "A-A".
- ⑪ BLOCK, 2" X 6" (12 REQD). SEE BLOCK "C" DETAIL, PAGE 4. NAIL TO ③, ⑥ AND/OR SELF W/6-12d NAILS.
- ⑫ 4" X 4" X CUT TO FIT (12 REQD). NAIL TO ① W/4-60d NAILS.
- ⑬ STEEL STRAPPING, 1 1/4" X .035" X 10'-0" LONG (72 REQD) TO ENCIRCLE FOUR (4) BOMBS.
- ⑭ SEALS, FOR 1 1/4" STRAPPING (144 REQD). SEAL W/2 SEALS AND (2) CRIMPS/SEAL.

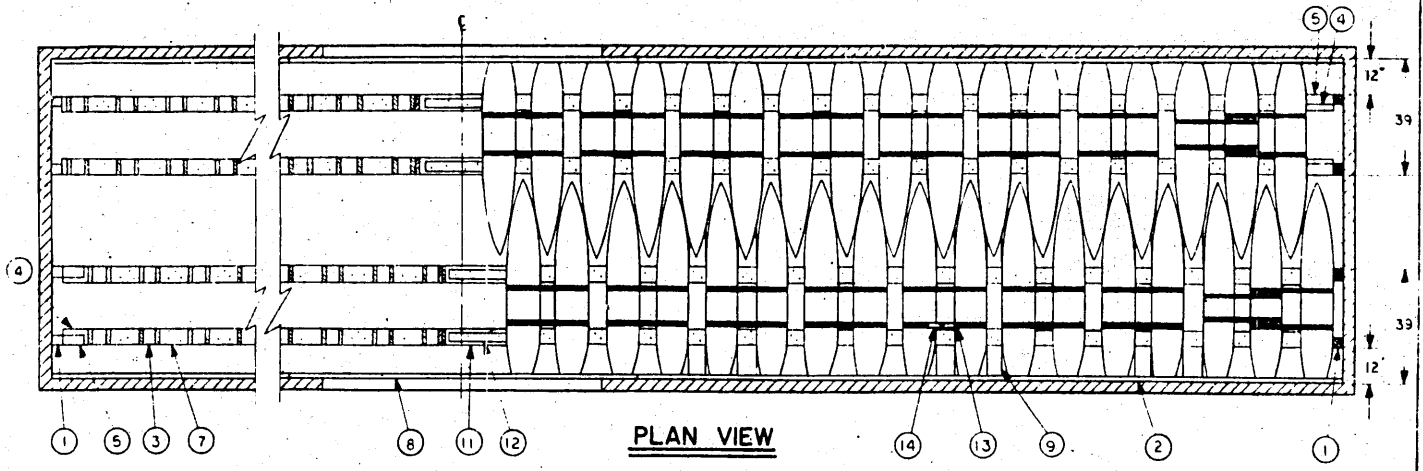
NOTE ● :

INSTALLATION OF SWAY BRACE, PC ③, ON 2ND AND 3RD LAYERS MUST NOT BE IN VERTICAL ALIGNMENT. WHEN LAMINATING PC ⑥ USE LENGTHS TO ENSURE 24" MIN SPACE BETWEEN JOINTS, EXCEPT AT JOINTS WHERE SWAY BRACE, PC ③, CROSSES PC ⑥.

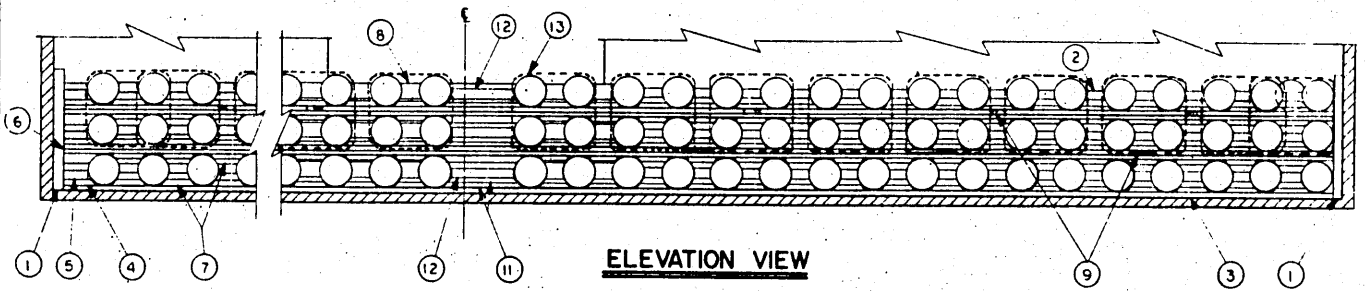


SECTION "A-A"

PIECE ⑥ WAS OMITTED FOR CLARITY



PLAN VIEW



ELEVATION VIEW

GENERAL NOTES

- A. LOAD AS SHOWN IS BASED ON 50 TON BOX CAR 50'-6" LONG X 9'-2" WIDE W/8'-0" (MIN) DOOR OPENING.
- B. DETAIL OF BOMB
 DIMENSIONS -----DIAMETER 10.75" X 67.125" LONG
 GROSS WEIGHT-----531 POUNDS (APPROX)
- C. WHEN ANY STRAP IS SEALED AT AN END-OVER-END LAP JOINT, A MINIMUM OF TWO (2) SEALS WITH TWO (2) CRIMPS PER SEAL MUST BE USED.
- D. NOTICE: SHIPMENTS WILL BE POSITIONED IN THE RAIL CAR IN COMPLIANCE WITH THE WEIGHT DISTRIBUTION REQUIREMENTS OF THE AAR. THE NUMBER OF UNITS MAY BE ADJUSTED TO FIT THE RAIL CAR CONCERNED OR THE QUANTITY TO BE SHIPPED; HOWEVER, THE APPROVED METHODS CONTAINED HEREIN FOR FULL OR PARTIAL CARLOAD MUST BE FOLLOWED FOR BLOCKING, BRACING, AND STAYING OF THIS ITEM.

BILL OF MATERIAL

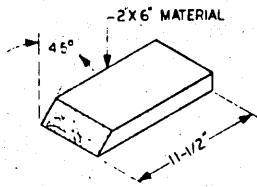
LUMBER	LINEAL FEET	BOARD FEET
2" X 4"	243	162
2" X 6"	1850	1850
4" X 4"	62	83
NAILS	NO. REQD	POUNDS
10d (3")	2892	45
12d (3½")	176	3
16d (3¾")	204	13
40d (5")	32	2
60d (6")	72	7½
STRAPPING, STEEL, 1½" X .035" 720' REQD----- 103 LBS.		
SEALS, FOR 1½" STRAPPING--- 144 REQD----- 7½ LBS		

MATERIAL SPECIFICATIONS

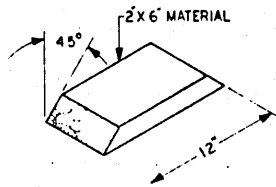
LUMBER:-----SEE TM 715-5500-1; DUNNAGE LUMBER, FED SPEC MM-L-751.
 NAILS:-----COMMON, CEMENT COATED, FED SPEC FF-N-105.
 ALTERNATE: ANNULAR-RING TYPE NAIL OF SAME SIZE.
 STRAPPING:-----TYPE 1, CLASS "A", "B" OR "C", FED SPEC QQ-S-781

LOAD AS SHOWN

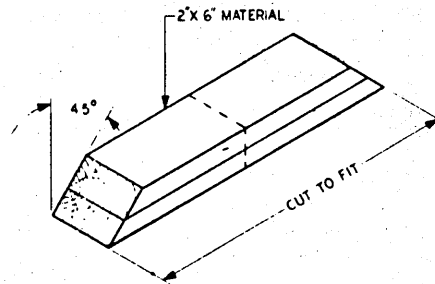
ITEM	QUANTITY	WEIGHT (APPROX)
BOMB, 500 LB-----	204	108,324 LBS
DUNNAGE-----		5,419 LBS
TOTAL WEIGHT-----		113,743 LBS



BLOCK "A"

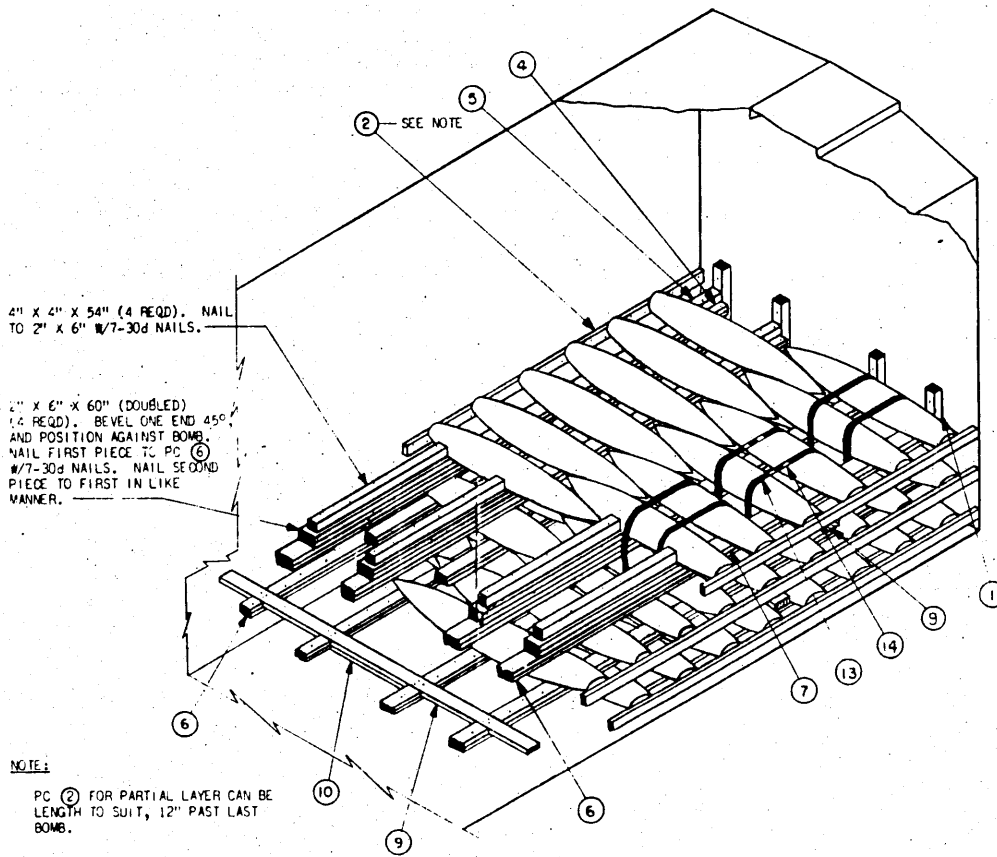


BLOCK "B"



BLOCK "C"

BLOCK MAY BE CONSTRUCTED IN TWO (2) SECTIONS AS SHOWN BY DOTTED LINE.



TYPICAL PARTIAL LAYER

FOR KEY NUMBERS SEE PAGE 2.

DETAILS